

## TECHNICAL PROPOSAL

### POP2 ABD0075 SEKOLAH JENIS KEBANGSAAN (TAMIL) TUN SAMBANTHAN 1 (D-SIDE)

Company Name	:	STEADCOM SDN BHD
Company Address	:	11-3, Jalan Puteri 2/6, Bandar Puteri, 47100 Puchong, Selangor
Prepared By	:	Fariz Aizat
Date	:	10/12/2024



**POINT A**

**POINT B**

**Starting Point**

Site / Boundary Name	:	SEKOLAH JENIS KEBANGSAAN (TAMIL) TUN SAMBANTHAN 1
Address	:	Jalan Sungkai (1), Kg Masjid 35500 Bidor, Perak.
District	:	Bidor
Postcode	:	35500
State	:	Perak
GPS Coordinate	:	4.107435, 101.288617
LRD	:	A

**End Point**

Site / Boundary Name	:	JALAN UTAMA TAMAN PUTRA
Address	:	Jalan Taman Putra 2, 35500 Bidor Perak.
District	:	Bidor
Postcode	:	35500
State	:	Perak
GPS Coordinate	:	4.111902, 101.292778
LRD	:	B

### Work Summary

No	Proposed Distance and Method	Unit	Qty
1	Horizontal Directional Drilling (HDD)	m	<b>445</b>
2	Carriage Way Open trench (CW)	m	<b>3</b>
3	Grass Verge Open Trenching (GV)	m	<b>6</b>
4	Micro trenching (MT)	m	<b>0</b>
	Total		<b>454</b>

	Other Information	Unit	Qty
1	Proposed Manhole	EA	<b>0</b>
2	Proposed Pole	EA	<b>81</b>
3	Joint Closure	EA	<b>4</b>
4	Estimated time required for completion	days	<b>30</b>

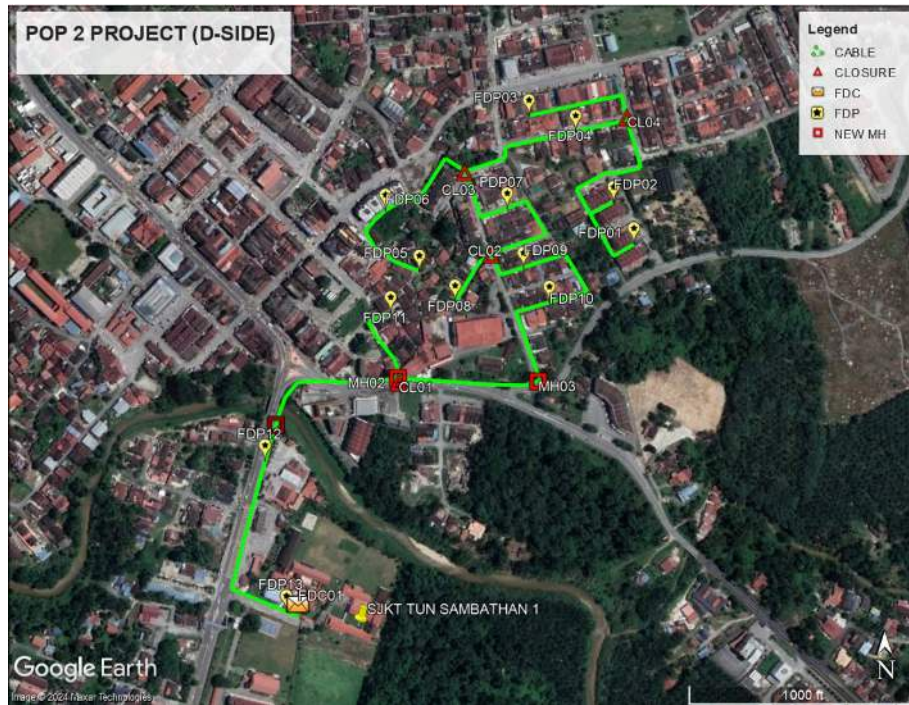
### Local Authority Summary

1. Daerah Tapah

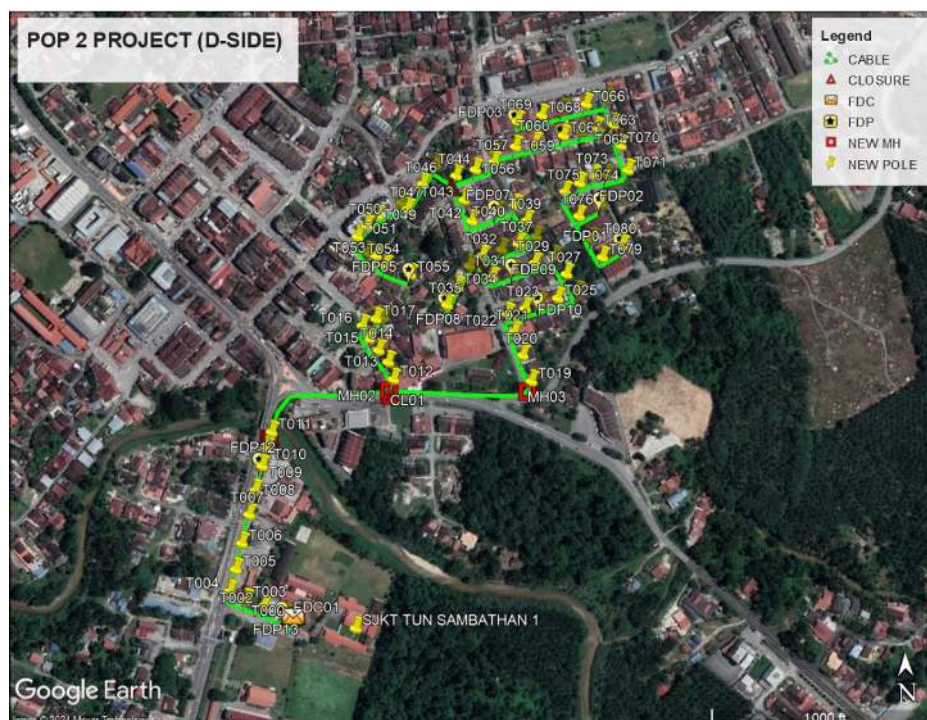
Bil	Items	Owner	Quantity	Distance(m)
1	HDD	JKR	2	445
		Majlis	-	-
		Estate / Private Land	-	-
2	New Pole	JKR	9PCS	253m
		Majlis	72PCS	1996m
		Estate / Private Land	-	-
3	Existing TNB Pole	JKR	-	-
		Majlis	-	-
		Estate / Private Land	-	-
Total				2694m

Site Plan – KMZ (Overview site area)

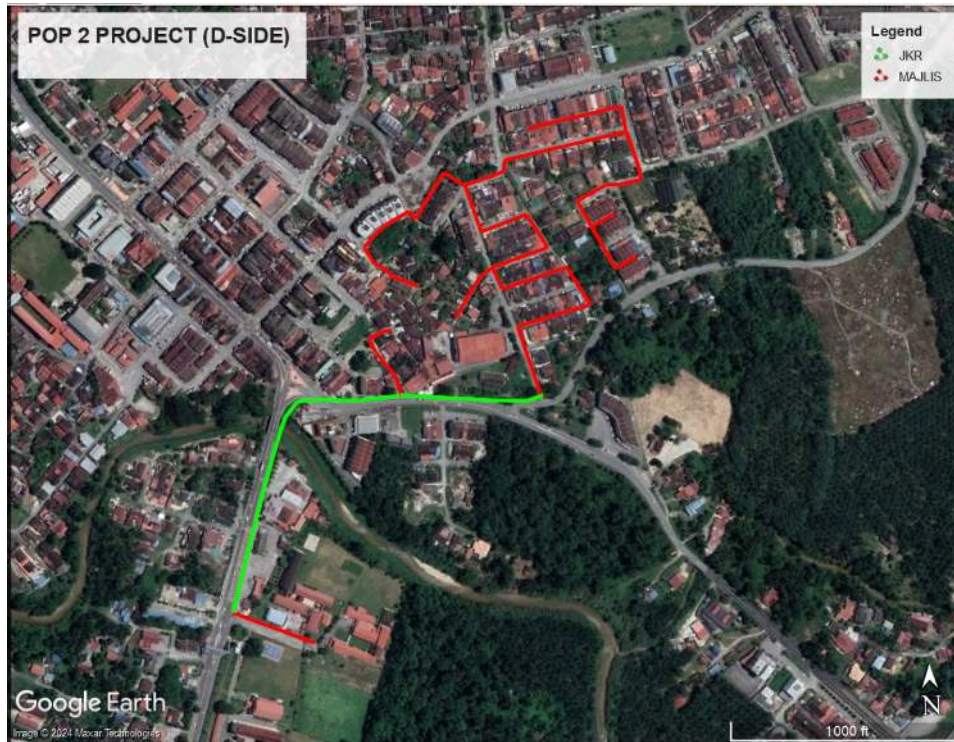
Proposed FDP and Closure



Proposed New Pole



**Site Plan – KMZ Routing (All Local Authority)**



**Green Colour – JKR Batang Padang**  
**Red Colour – Majlis Daerah Tapah**

Site Plan – KMZ Routing (All site area)

Route 1



Route 1.1

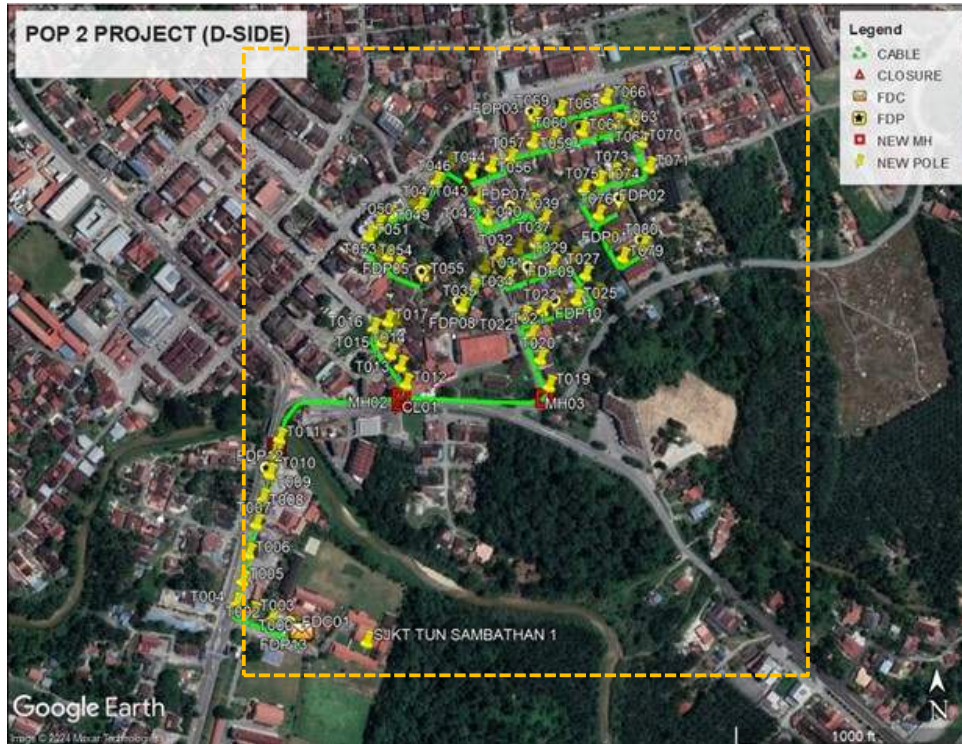


Route 1.2



Route 1.3

Site Plan – KMZ Routing (Proposed new Pole)



**Proposed New Pole Lat & Long Table**

No.	Label	Pole & Manhole ID	Latitude	Longitude	Local Authority
1	OLT / FDC	T000	4.107423	101.288646	MAJLIS DAERAH TAPAH
2	FDP01	T080	4.111902	101.292778	MAJLIS DAERAH TAPAH
3	FDP02	T077	4.112432	101.292537	MAJLIS DAERAH TAPAH
4	FDP03	T069	4.11351	101.291516	MAJLIS DAERAH TAPAH
5	FDP04	T061	4.113314	101.292091	MAJLIS DAERAH TAPAH
6	FDP05	T055	4.111603	101.290131	MAJLIS DAERAH TAPAH
7	FDP06	T049	4.112355	101.28973	MAJLIS DAERAH TAPAH
8	FDP07	T041	4.112374	101.291229	MAJLIS DAERAH TAPAH
9	FDP08	T035	4.111212	101.29058	MAJLIS DAERAH TAPAH
10	FDP09	T030	4.111619	101.291422	MAJLIS DAERAH TAPAH
11	FDP10	T024	4.111202	101.291737	MAJLIS DAERAH TAPAH
12	FDP11	T018	4.11108	101.289787	MAJLIS DAERAH TAPAH
13	FDP12	T009	4.109283	101.288259	JKR DAERAH BATANG PADANG
14	FDP13	T001	4.107485	101.288518	MAJLIS DAERAH TAPAH
15	CL01	MH02	4.110282	101.289876	JKR DAERAH BATANG PADANG
16	CL02	T032	4.111815	101.291034	MAJLIS DAERAH TAPAH
17	CL03	T044	4.112834	101.29073	MAJLIS DAERAH TAPAH
18	CL04	T064	4.113441	101.292722	MAJLIS DAERAH TAPAH

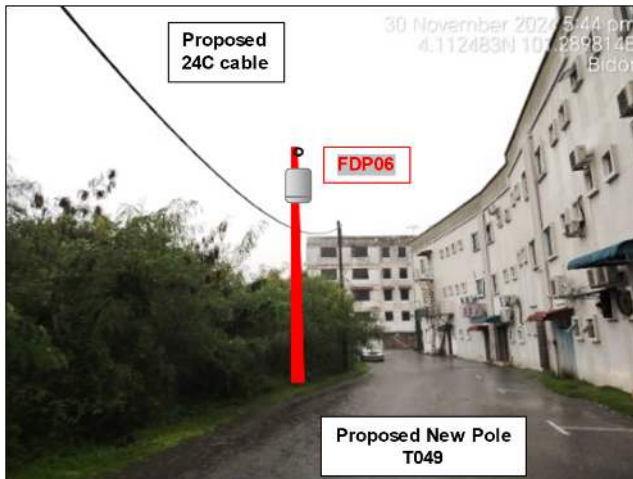
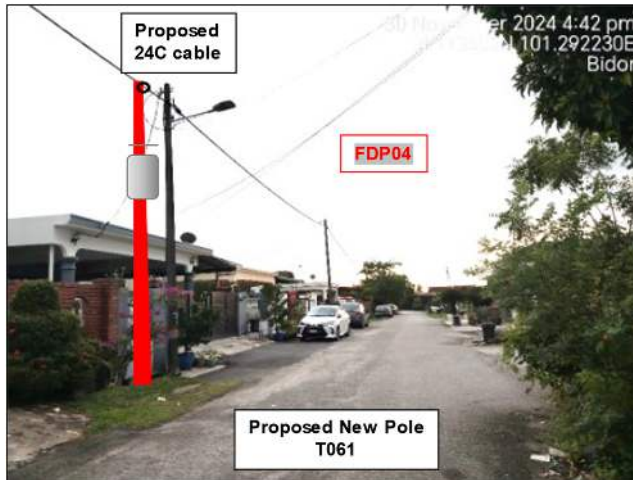
**Overall Pole (Proposed New)**

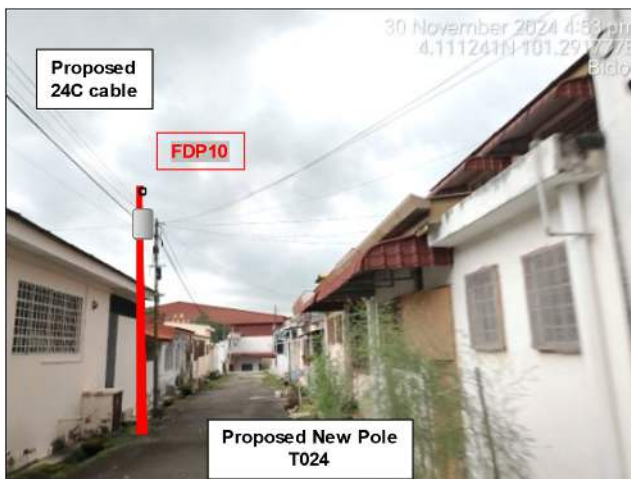
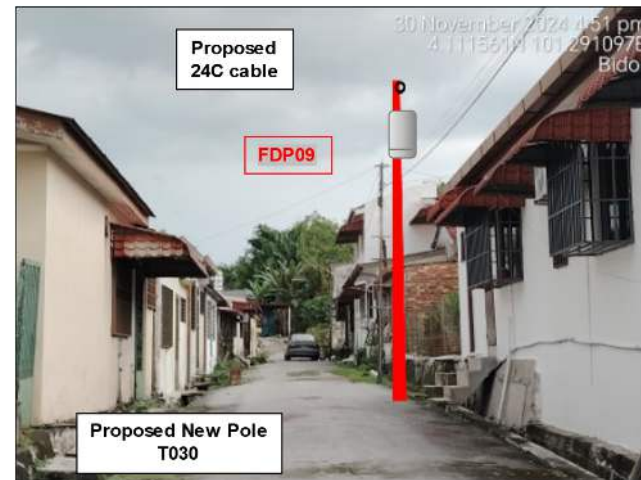
No.	Pole & Manhole ID	Distance	Latitude	Longitude	Local Authority
1	T000	0	4.107423	101.288646	MAJLIS DAERAH TAPAH
2	T001	16	4.107485	101.288518	MAJLIS DAERAH TAPAH
3	T002	30	4.107588	101.288263	MAJLIS DAERAH TAPAH
4	T003	25	4.107669	101.288047	MAJLIS DAERAH TAPAH
5	T004	25	4.107777	101.28785	JKR DAERAH BATANG PADANG
6	T005	30	4.108039	101.287925	JKR DAERAH BATANG PADANG
7	T006	35	4.10835	101.288002	JKR DAERAH BATANG PADANG
8	T007	40	4.108696	101.288095	JKR DAERAH BATANG PADANG
9	T008	35	4.108985	101.288172	JKR DAERAH BATANG PADANG
10	T009	35	4.109283	101.288259	JKR DAERAH BATANG PADANG
11	T010	26	4.109503	101.288319	JKR DAERAH BATANG PADANG
12	T011	24	4.109696	101.288381	JKR DAERAH BATANG PADANG
13	MH01	3	4.109726	101.288388	JKR DAERAH BATANG PADANG
14	MH02	235	4.110282	101.289876	JKR DAERAH BATANG PADANG
15	T012	3	4.110305	101.289895	MAJLIS DAERAH TAPAH
16	T013	28	4.11052	101.289834	MAJLIS DAERAH TAPAH
17	T014	22	4.11067	101.289719	MAJLIS DAERAH TAPAH
18	T015	20	4.110818	101.2896	MAJLIS DAERAH TAPAH
19	T016	21	4.11098	101.289524	MAJLIS DAERAH TAPAH
20	T017	21	4.11106	101.289691	MAJLIS DAERAH TAPAH
21	T018	12	4.11108	101.289787	MAJLIS DAERAH TAPAH
22	MH03	210	4.110226	101.291586	JKR DAERAH BATANG PADANG
23	T019	3	4.110239	101.2916	JKR DAERAH BATANG PADANG
24	T020	38	4.110562	101.291502	MAJLIS DAERAH TAPAH
25	T021	33	4.110855	101.291403	MAJLIS DAERAH TAPAH
26	T022	28	4.111079	101.291326	MAJLIS DAERAH TAPAH
27	T023	28	4.111143	101.291546	MAJLIS DAERAH TAPAH
28	T024	22	4.111202	101.291737	MAJLIS DAERAH TAPAH
29	T025	28	4.111262	101.291957	MAJLIS DAERAH TAPAH
30	T026	28	4.111333	101.292207	MAJLIS DAERAH TAPAH
31	T027	30	4.11156	101.292074	MAJLIS DAERAH TAPAH
32	T028	30	4.111784	101.291935	MAJLIS DAERAH TAPAH
33	T029	30	4.111707	101.291684	MAJLIS DAERAH TAPAH
34	T030	30	4.111619	101.291422	MAJLIS DAERAH TAPAH
35	T031	32	4.111537	101.291147	MAJLIS DAERAH TAPAH
36	T032	32	4.111815	101.291034	MAJLIS DAERAH TAPAH
37	T033	24	4.111693	101.290869	MAJLIS DAERAH TAPAH
38	T034	35	4.111432	101.290713	MAJLIS DAERAH TAPAH
39	T035	30	4.111212	101.29058	MAJLIS DAERAH TAPAH
40	T036	30	4.111891	101.291276	MAJLIS DAERAH TAPAH

41	T037	25	4.111958	101.291489	MAJLIS DAERAH TAPAH
42	T038	25	4.11204	101.291709	MAJLIS DAERAH TAPAH
43	T039	25	4.112245	101.291599	MAJLIS DAERAH TAPAH
44	T040	27	4.112444	101.291462	MAJLIS DAERAH TAPAH
45	T041	28	4.112374	101.291229	MAJLIS DAERAH TAPAH
46	T042	38	4.112256	101.290914	MAJLIS DAERAH TAPAH
47	T043	35	4.112526	101.290821	MAJLIS DAERAH TAPAH
48	T044	35	4.112834	101.29073	MAJLIS DAERAH TAPAH
49	T045	33	4.112983	101.290477	MAJLIS DAERAH TAPAH
50	T046	35	4.112739	101.290309	MAJLIS DAERAH TAPAH
51	T047	40	4.112428	101.290116	MAJLIS DAERAH TAPAH
52	T048	15	4.112508	101.290037	MAJLIS DAERAH TAPAH
53	T049	40	4.112355	101.28973	MAJLIS DAERAH TAPAH
54	T050	20	4.11223	101.2896	MAJLIS DAERAH TAPAH
55	T051	20	4.112095	101.289483	MAJLIS DAERAH TAPAH
56	T052	27	4.111891	101.289604	MAJLIS DAERAH TAPAH
57	T053	15	4.111851	101.289706	MAJLIS DAERAH TAPAH
58	T054	20	4.111724	101.289823	MAJLIS DAERAH TAPAH
59	T055	38	4.111603	101.290131	MAJLIS DAERAH TAPAH
60	T056	28	4.112907	101.290974	MAJLIS DAERAH TAPAH
61	T057	28	4.112998	101.29121	MAJLIS DAERAH TAPAH
62	T058	16	4.113126	101.291211	MAJLIS DAERAH TAPAH
63	T059	30	4.113187	101.291486	MAJLIS DAERAH TAPAH
64	T060	30	4.113233	101.291733	MAJLIS DAERAH TAPAH
65	T061	40	4.113314	101.292091	MAJLIS DAERAH TAPAH
66	T062	28	4.113357	101.292318	MAJLIS DAERAH TAPAH
67	T063	22	4.1134	101.292515	MAJLIS DAERAH TAPAH
68	T064	24	4.113441	101.292722	MAJLIS DAERAH TAPAH
69	T065	36	4.113764	101.292668	MAJLIS DAERAH TAPAH
70	T066	32	4.113707	101.292391	MAJLIS DAERAH TAPAH
71	T067	35	4.113647	101.292094	MAJLIS DAERAH TAPAH
72	T068	30	4.113581	101.291827	MAJLIS DAERAH TAPAH
73	T069	35	4.11351	101.291516	MAJLIS DAERAH TAPAH
74	T070	32	4.113167	101.292807	MAJLIS DAERAH TAPAH
75	T071	38	4.112851	101.292886	MAJLIS DAERAH TAPAH
76	T072	30	4.112796	101.292621	MAJLIS DAERAH TAPAH
77	T073	18	4.112797	101.292455	MAJLIS DAERAH TAPAH
78	T074	23	4.112701	101.292277	MAJLIS DAERAH TAPAH
79	T075	24	4.112597	101.29209	MAJLIS DAERAH TAPAH
80	T076	40	4.112285	101.292255	MAJLIS DAERAH TAPAH
81	T077	33	4.112432	101.292537	MAJLIS DAERAH TAPAH
82	T078	35	4.111994	101.292407	MAJLIS DAERAH TAPAH
83	T079	30	4.111759	101.29253	MAJLIS DAERAH TAPAH
84	T080	32	4.111902	101.292778	MAJLIS DAERAH TAPAH

Site Photos – Proposed to install pole





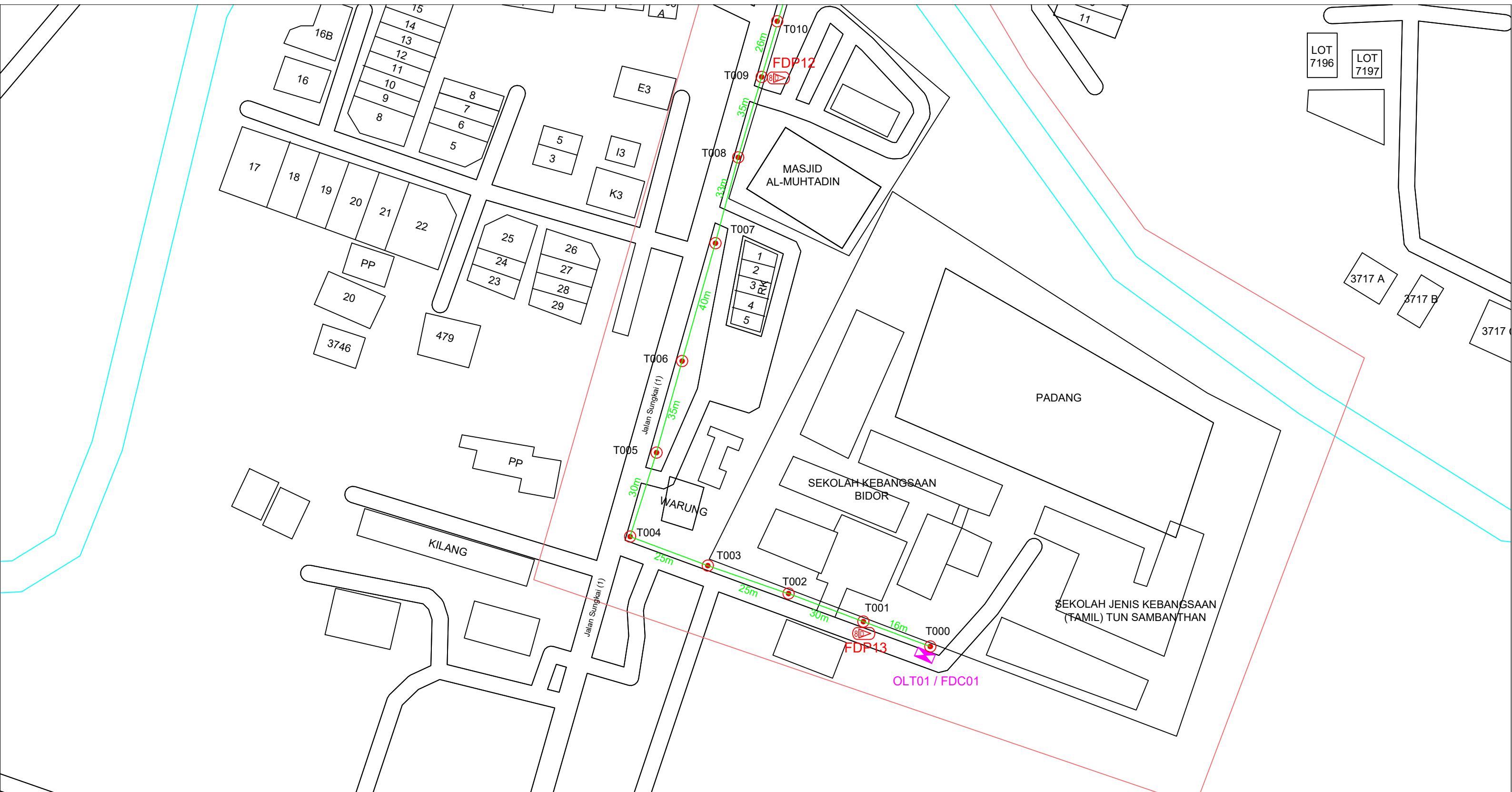




3rd Parties Dependencies

No.	Local Council/ Authority	Remark
1	JKR Batang Padang	
2	Majlis Daerah Tapah	
3		
4		
5		
6		





12C FOC	Installed 1:4 / 1:8 / 1:32 splitter	●	Installed Pole (9m)	s	Suspension	81	JB30	New Manhole (PIT)	Micro-Trenching (Meter)	MH1	MH NO.
24C FOC	2696m Installed Patch Cord	●	Installed Pole (7.5M)	t	Tension	155	C7	New Manhole(JRC7)	Temporary Infra (Meter)	TKS-1	Existing TNB Pole NO.
48C FOC	FDC	1	Installed Pole (6.7M)	r	Pole Ring	13		FDP Boundary	Loop / Coil (Meter)	P001	New Pole NO.
96C FOC	Closure	4	Existing TNB Pole	o	Existing TNB Pole	13		FDP with (1:8) splitter	#	CL01	Closure NO.
144C FOC	Existing Closure		Installed Riser	o	Installed Riser			Existing Manhole	C01	DP1	FDP NO.
								HDD (Meter)	445m		
								Open Cut (Meter)	9m		

ACTUAL HOMEPASS :

KEY PLAN:

PROJECT OWNER:




MAIN CONTRACTOR:



A member of OCK Group Berhad

SUB-CONTRACTOR:

PROJECT TITLE:

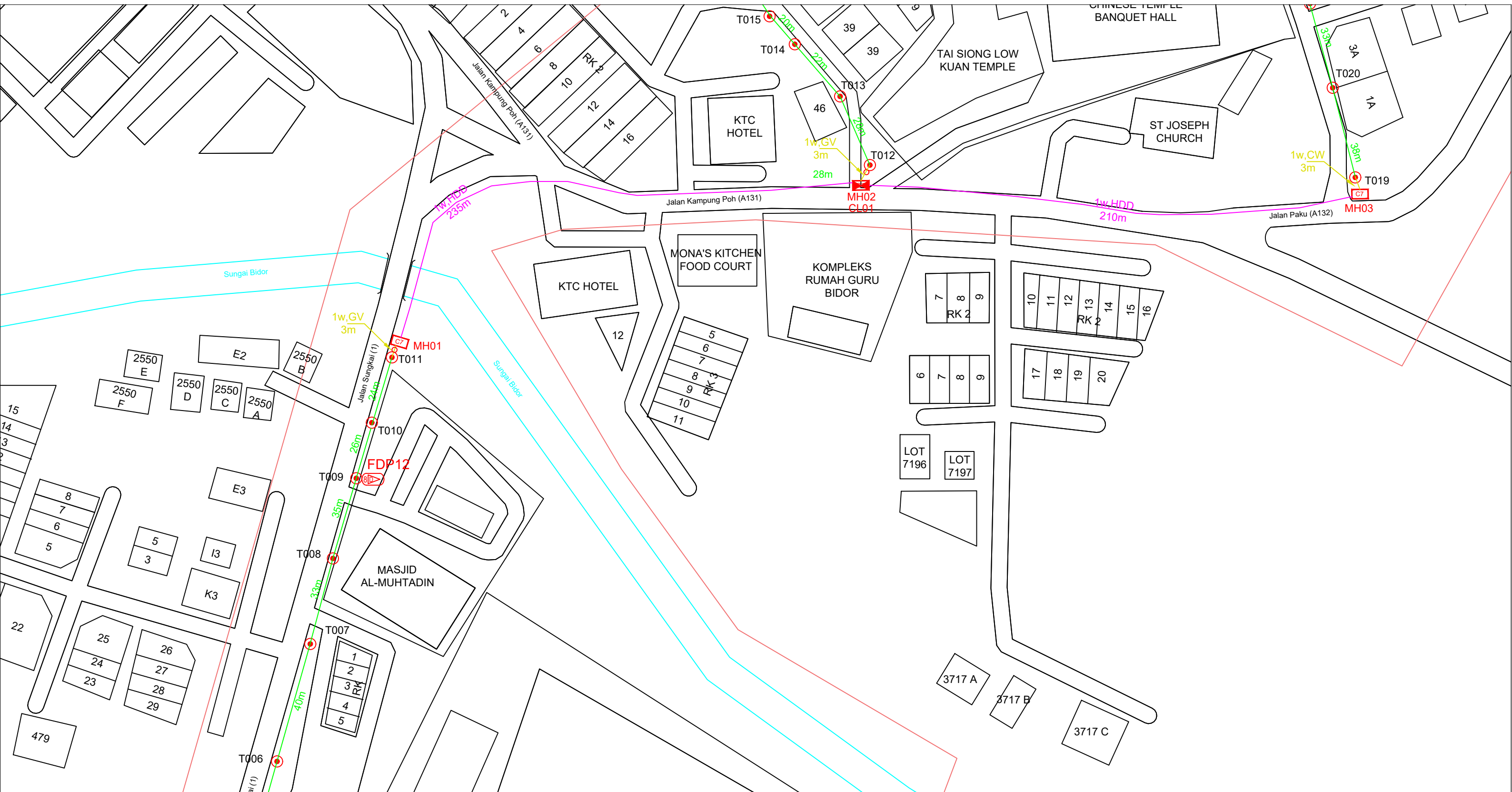
CONTRACTOR FOR SURVEY, TECHNICAL PROPOSAL AND WAYLEAVE & PERMIT APPROVAL -POP2 PROJECT

DRAWING TITLE:

Construction Drawing  
ABD0075  
SJK (TAMIL) TUN SAMBANTHAN 1

PROJECT PHASE:  
POP 2

Design By :	Date :	10/12/2024
Drawn By :	Scale :	NTS
Checked By :	Job Number :	JOB/NUMBER
DRAWING NUMBER :	Sheet :	2/5
ABD0075-CD-01		Size : A3
THIS PRINT AND ITS COPYRIGHT ARE THE PROPERTY OF STEADCOM SDN BHD		



12C FOC	Installed 1:4 / 1:8 / 1:32 splitter	●	Installed Pole (9m)	s	Suspension	81	JB30	New Manhole (PIT)	—	Micro-Trenching (Meter)	MH1	MH NO.
24C FOC	2696m	—	Installed Pole (7.5M)	81	Tension	155	C7	New Manhole(JRC7)	3	Temporary Infra (Meter)	TKS-1	Existing TNB Pole NO.
48C FOC		■	Installed Pole (6.7M)	1	Pole Ring	13	—	FDP Boundary	—	Loop / Coil (Meter)	P001	New Pole NO.
96C FOC		⚡	Existing TNB Pole	4	FDP with (1:8) splitter	13	—	HDD (Meter)	445m	#	CL01	Closure NO.
144C FOC		□	Existing Closure	—	Existing Manhole	—	—	Open Cut (Meter)	9m	C01	DP1	FDP NO.

ACTUAL HOMEPASS :

KEY PLAN:

PROJECT OWNER:



187475-V



MAIN CONTRACTOR:



A member of OCK Group Berhad

SUB-CONTRACTOR:

PROJECT TITLE:

CONTRACTOR FOR SURVEY, TECHNICAL PROPOSAL AND WAYLEAVE & PERMIT APPROVAL -POP2 PROJECT

DRAWING TITLE:

Construction Drawing  
ABD0075  
SJK (TAMIL) TUN SAMBANTHAN 1

PROJECT PHASE:  
POP 2

Design By :	Date :	10/12/2024
Drawn By :	Scale :	NTS
Checked By :	Job Number :	JOB/NUMBER
DRAWING NUMBER :	Sheet :	3/5
ABD0075-CD-01		Size : A3
THIS PRINT AND ITS COPYRIGHT ARE THE PROPERTY OF STEADCOM SDN BHD		

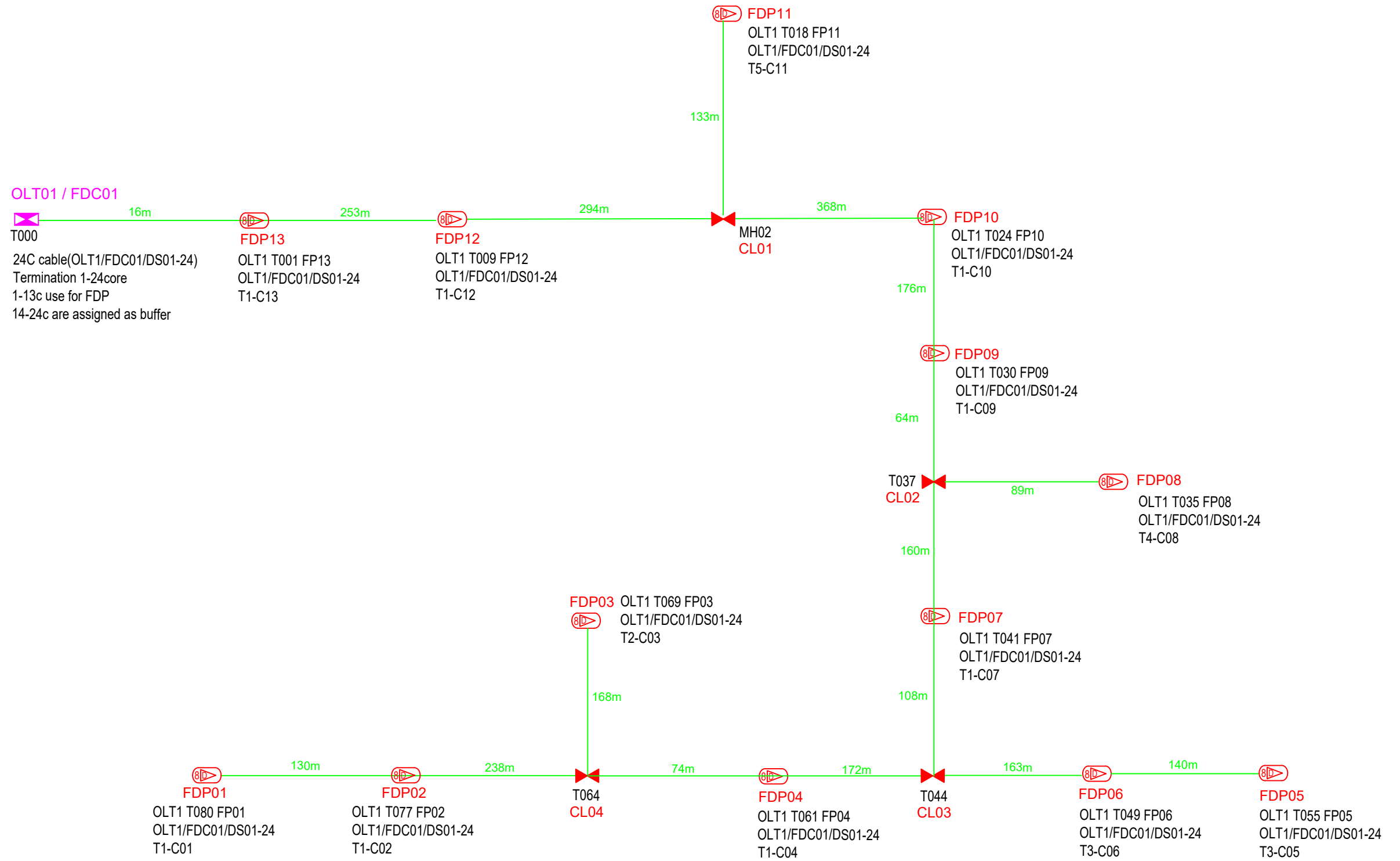




12C FOC	Installed 1:4 / 1:8 / 1:32 splitter	●	Installed Pole (9m)	s	Suspension	81	UB30	New Manhole (PIT)	—	MH1	MH NO.
24C FOC	Installed Patch Cord	●	Installed Pole (7.5M)	81	Tension	155	C7	New Manhole(JRC7)	3	TKS-1	Existing TNB Pole NO.
48C FOC	FDC	■	Installed Pole (6.7M)	1	Pole Ring	13	—	FDP Boundary	—	P001	New Pole NO.
96C FOC	Closure	⊘	Existing TNB Pole	4	FDP with (1:8) splitter	13	—	HDD (Meter)	445m	CL01	Closure NO.
144C FOC	Existing Closure	□	Installed Riser	○	Existing Manhole	—	—	Open Cut (Meter)	9m	DP1	FDP NO.
—	—	—	—	—	—	—	—	Micro-Trenching (Meter)	—	—	—
—	—	—	—	—	—	—	—	Temporary Infra (Meter)	—	—	—
—	—	—	—	—	—	—	—	Loop / Coil (Meter)	90	—	—
—	—	—	—	—	—	—	—	Active Outdoor Cabinet	—	—	—
—	—	—	—	—	—	—	—	FDC NO.	—	—	—

ACTUAL HOMEPASS :

KEY PLAN:	PROJECT OWNER: <b>APEX COMMUNICATIONS SDN BHD</b> 187475-V <b>PRIVASAT</b>	MAIN CONTRACTOR: <b>STEADCOM</b> A member of OCK Group Berhad	SUB-CONTRACTOR:	PROJECT TITLE: CONTRACTOR FOR SURVEY, TECHNICAL PROPOSAL AND WAYLEAVE & PERMIT APPROVAL -POP2 PROJECT	DRAWING TITLE: Construction Drawing ABD0075 SJK (TAMIL) TUN SAMBANTHAN 1 PROJECT PHASE: POP 2	Design By : Date : 10/12/2024	Drawn By : Scale : NTS	Checked By : Job Number : JOB/NUMBER	DRAWING NUMBER : ABD0075-CD-01 Sheet : 5/5	THIS PRINT AND ITS COPYRIGHT ARE THE PROPERTY OF STEADCOM SDN BHD Size : A3
-----------	-------------------------------------------------------------------------------------	---------------------------------------------------------------------	-----------------	----------------------------------------------------------------------------------------------------------	--------------------------------------------------------------------------------------------------------------	----------------------------------	---------------------------	-----------------------------------------	-----------------------------------------------------	--------------------------------------------------------------------------------





12C FOC	Installed 1:4 / 1:8 / 1:32 splitter	Installed Pole (9m)	s	Suspension	81	JB30	New Manhole (PIT)	Micro-Trenching (Meter)	MH1	MH NO.
24C FOC	2696m Installed Patch Cord	Installed Pole (7.5M)	81	Tension	155	C7	New Manhole(JRC7)	Temporary Infra (Meter)	TKS-1	Existing TNB Pole NO.
48C FOC	FDC	Installed Pole (6.7M)	1	Pole Ring	13		FDP Boundary	Loop / Coil (Meter)	P001	New Pole NO.
96C FOC	Closure	Existing TNB Pole	4	Existing TNB Pole	13		HDD (Meter)	445m	#	Active Outdoor Cabinet
144C FOC	Existing Closure	Installed Riser		Existing Manhole			Open Cut (Meter)	9m	C01	FDC NO.

ACTUAL HOMEPASS :

KEY PLAN:

PROJECT OWNER:

MAIN CONTRACTOR:



A member of OCK Group Berhad

SUB-CONTRACTOR:

PROJECT TITLE:  
 CONTRACTOR FOR SURVEY, TECHNICAL PROPOSAL AND WAYLEAVE & PERMIT APPROVAL -POP2 PROJECT

DRAWING TITLE:  
 SLD Drawing  
 ABD0075  
 SJK (TAMIL) TUN SAMBANTHAN 1  
 PROJECT PHASE:  
 POP 2

Design By :	Date :	10/12/2024
Drawn By :	Scale :	NTS
Checked By :	Job Number :	JOB/NUMBER
DRAWING NUMBER :	Sheet :	1/1
ABD0075-CD-01		Size : A3
THIS PRINT AND ITS COPYRIGHT ARE THE PROPERTY OF STEADCOM SDN BHD		