

TECHNICAL PROPOSAL

POP2 ABA5068 SEKOLAH KEBANGSAAN PERMATANG PELANDOK (D-SIDE)

Company Name : KNZ ENGINEERING SDN BHD.
Company Address : NO 60 & 60 A JALAN KLEBANG INDAH 1 MEDAN KLEBANG INDAH 30010 IPOH PERAK
Prepared By : FARHAH AFIQAH BINTI AMDON
Date : 25/12/2024



Starting Point

Site / Boundary Name : Teluk Intan
 Address : SK Permatang Pelandok, 36600 Chenderong Balai, Perak
 District : Hilir Perak
 Postcode : 36600
 State : Perak
 GPS Coordinate : 4.11236837436199, 101.029113833368
 LRD : A

End Point

Site / Boundary Name : Teluk Intan
 Address : Jalan Teluk Intan, 36600 Chenderong Balai, Perak
 District : Hilir Perak
 Postcode : 36600
 State : Perak
 GPS Coordinate : 4.09947831814843, 101.046874510001
 LRD : B



PROJEK PENYEDIAAN DAN PENYELENGGARAAN POINT OF PRESENCE (POP) FASA 2: HAB INFRASTRUKTUR GENTIAN OPTIK BERHAMPIRAN DENGAN SEKOLAH, KAWASAN PERINDUSTRIAN, PREMIS KERAJAAN DAN KOMUNITI SEKITARNYA OLEH KEMENTERIAN KOMUNIKASI MALAYSIA – ZON UTARA (KKMM.400-11/17/132(1))



1.0 WORK SUMMARY

NO	PROPOSED DISTANCE AND METHOD	UNIT	QUANTITY
1	Horizontal Directional Drilling (HDD)	m	0
2	Carriage Way Open Trench (CW)	m	0
3	Grass Verge Open Trenching (GV)	m	0
4	Micro Trenching (MT)	m	0
Total			0

NO	OTHER INFORMATION	UNIT	QUANTITY
1	Installation of Short Span ADSS Fibre Cables	m	8,460
2	Install New Pole	ea	187
3	Install New JRC7 Manhole	ea	0
4	Install GI Riser 100mm	ea	0
5	Install Fiber Distribution Point	ea	13
6	Install Closure	ea	4
7	Estimated Time Required for Completion	days	30

2.0 LOCAL AUTHORITY SUMMARY

Daerah Bagan Datuk

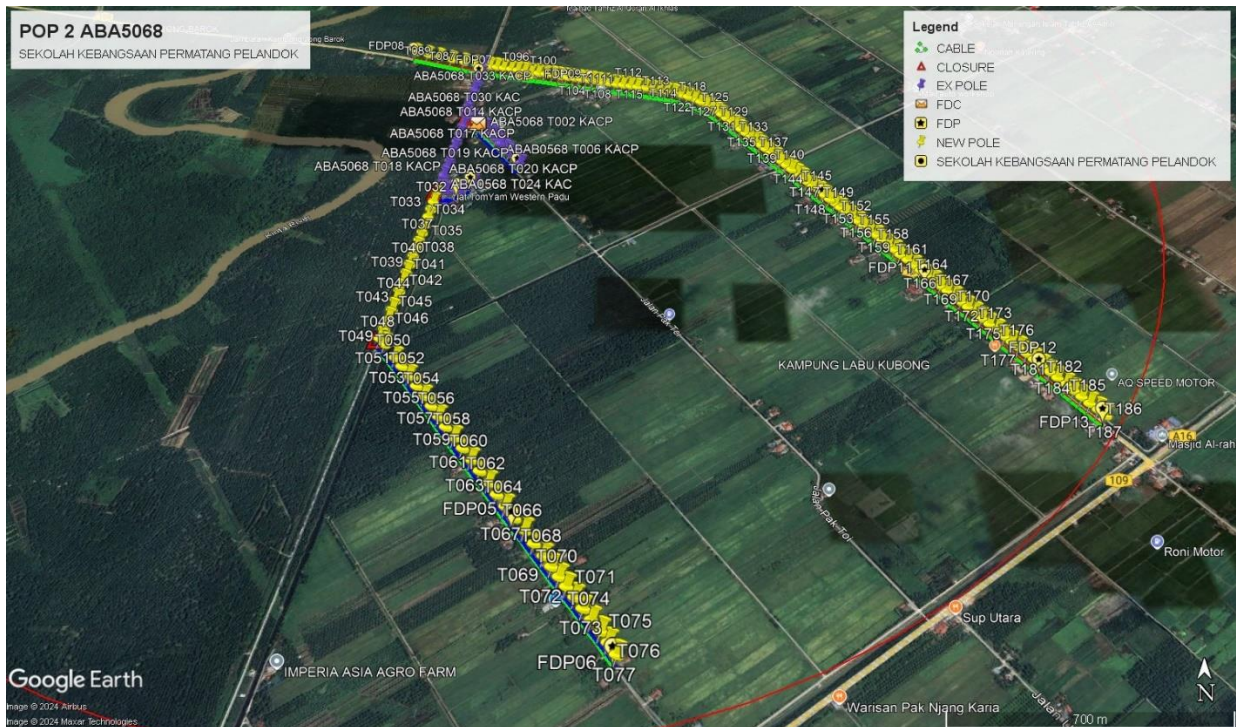
Bil	Items	Owner	Quantity	Distance
1	HDD	JKR	-	-
		Majlis	-	-
		Estate / Private Land	-	-
2	New Pole	JKR	102	4,080m
		Majlis	85	3,910m
		Estate / Private Land	-	-
3	Existing TNB Pole	JKR	-	-
		Majlis	-	-
		Estate / Private Land	-	-
Total				7,990m

Site Plan -KMZ (Overview site area)

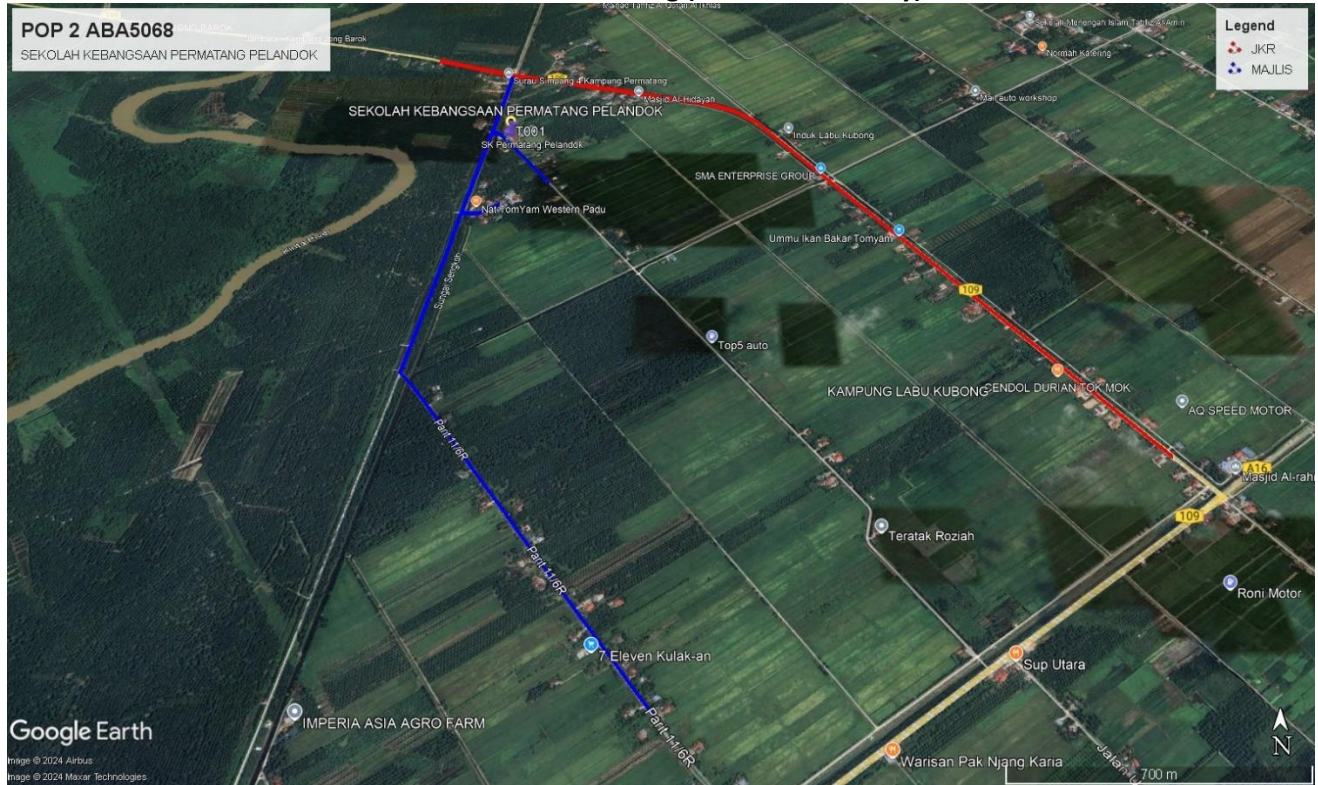
Proposed FDP and Closure



Proposed New Pole



Site Plan - KMZ Routing (All Local Authority)

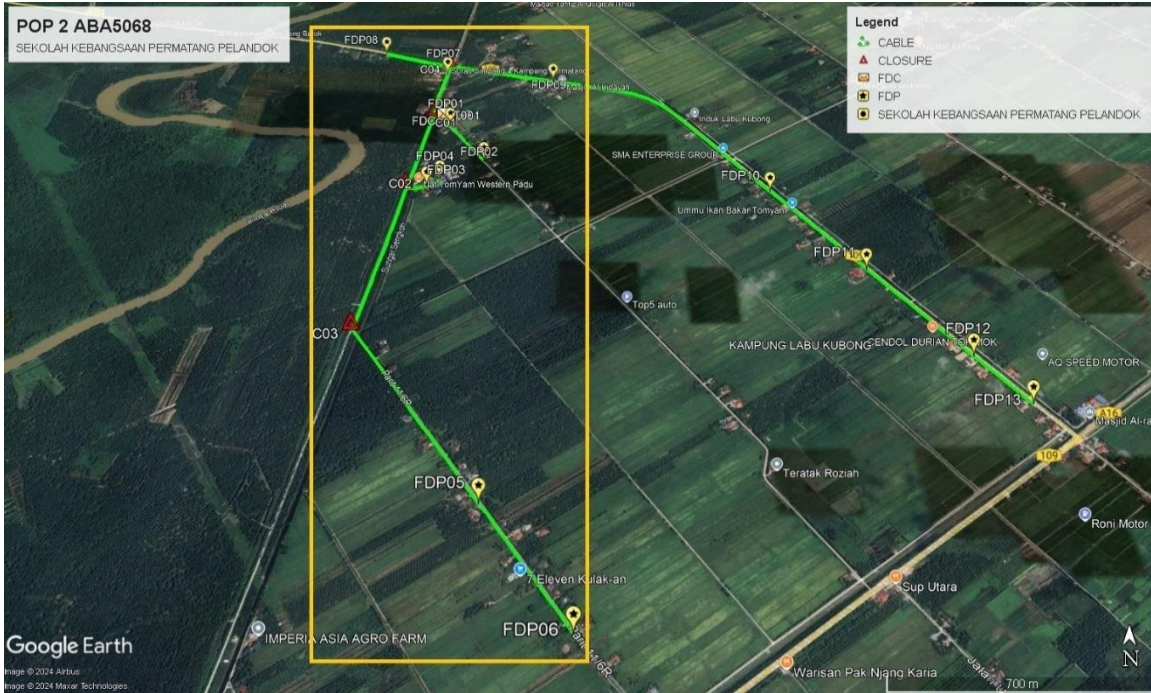


Red Colour – JKR Road

Blue Colour - Majlis Road

Site Plan – KMZ Routing (All site area)

Route 1

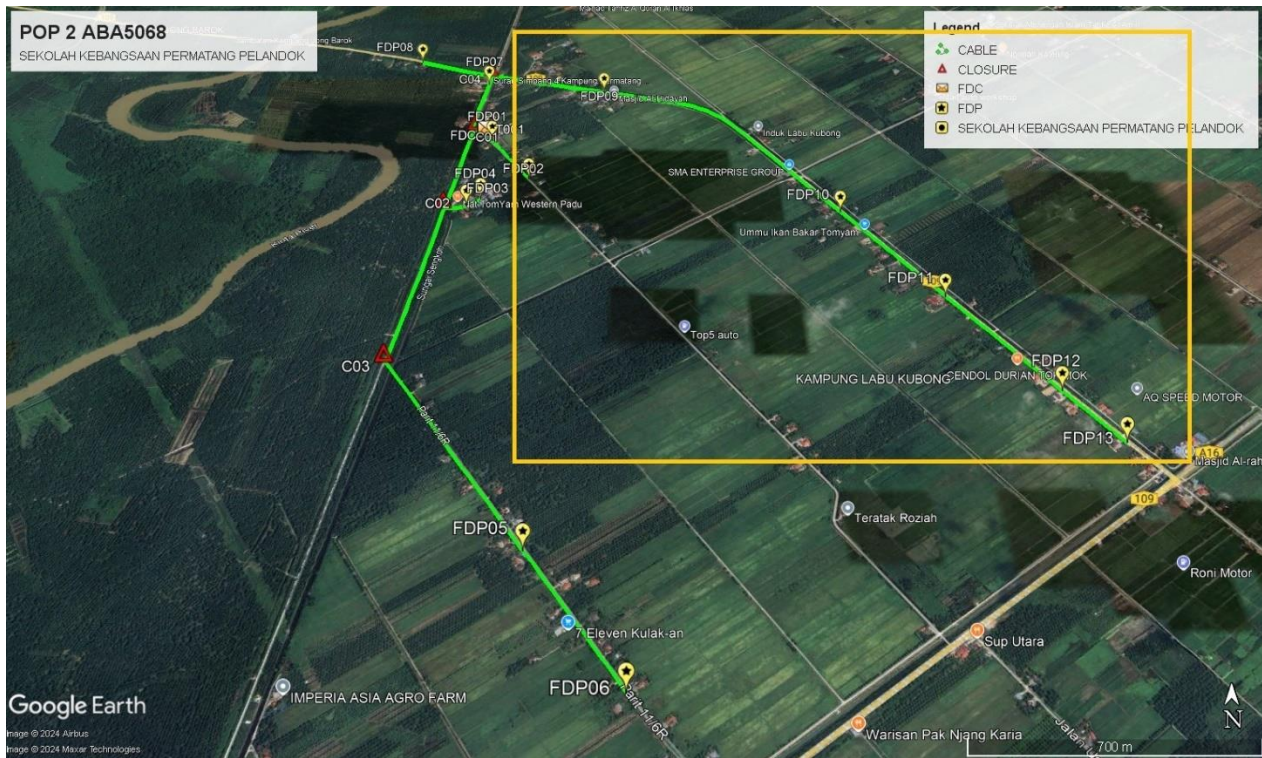


Route 1.1



Route 1.2

Route 2



Route 2.1



Route 2.2

3.0 PROPOSED NEW POLE

Proposed New Pole Coordinate					
No.	Pole Number	Distance (m)	Latitude	Longitude	Local Authority
1	EX T001	40	4.1124682930234	101.028935899472	Majlis Perbandaran Teluk Intan
2	EX T002	40	4.11236837436199	101.029113833368	Majlis Perbandaran Teluk Intan
3	EX T003	40	4.11230031901666	101.02916017735	Majlis Perbandaran Teluk Intan
4	EX T004	40	4.11219300688575	101.029232710549	Majlis Perbandaran Teluk Intan
5	EX T005	40	4.11191995930189	101.029436078741	Majlis Perbandaran Teluk Intan
6	EX T006	40	4.1116808224721	101.029589701447	Majlis Perbandaran Teluk Intan
7	EX T007	40	4.11142170748629	101.029765520337	Majlis Perbandaran Teluk Intan
8	EX T008	40	4.11113893269693	101.02993164866	Majlis Perbandaran Teluk Intan
9	EX T009	40	4.110911994047	101.030075784983	Majlis Perbandaran Teluk Intan
10	EX T010	40	4.11072704177284	101.03021086339	Majlis Perbandaran Teluk Intan
11	EX T011	40	4.11050785146361	101.030360186109	Majlis Perbandaran Teluk Intan
12	EX T012	40	4.11032161659305	101.030483588004	Majlis Perbandaran Teluk Intan
13	EX T013	40	4.1126727568465	101.028866458756	Majlis Perbandaran Teluk Intan
14	EX T014	40	4.11290187405764	101.028662237277	Majlis Perbandaran Teluk Intan
15	EX T015	40	4.1129780986817	101.028443890884	Majlis Perbandaran Teluk Intan
16	EX T016	40	4.1128420239199	101.028421068877	Majlis Perbandaran Teluk Intan
17	EX T017	40	4.11243102009727	101.028367748726	Majlis Perbandaran Teluk Intan
18	EX T018	40	4.11194784777581	101.028297514838	Majlis Perbandaran Teluk Intan
19	EX T019	40	4.11152270810807	101.028243442731	Majlis Perbandaran Teluk Intan
20	EX T020	40	4.11116278539012	101.028201108322	Majlis Perbandaran Teluk Intan
21	EX T021	40	4.11047708228104	101.02812625596	Majlis Perbandaran Teluk Intan
22	EXT022	40	4.11011023096471	101.028068317521	Majlis Perbandaran Teluk Intan
23	EX T023	40	4.10965884329795	101.028009323113	Majlis Perbandaran Teluk Intan
24	EX T024	40	4.10927382852732	101.027945970521	Majlis Perbandaran Teluk Intan
25	EX T025	40	4.10887110024193	101.027909721532	Majlis Perbandaran Teluk Intan
26	EX T026	40	4.1088930915876	101.028134804065	Majlis Perbandaran Teluk Intan

3.0 PROPOSED NEW POLE

Proposed New Pole Coordinate					
No.	Pole Number	Distance (m)	Latitude	Longitude	Local Authority
27	EX T027	40	4.10892538341447	101.028434864929	Majlis Perbandaran Teluk Intan
28	EX T028	40	4.10899635508138	101.028567338219	Majlis Perbandaran Teluk Intan
29	EX T029	40	4.10916722817883	101.028819975196	Majlis Perbandaran Teluk Intan
30	EX T030	40	4.10930896341166	101.029004603226	Majlis Perbandaran Teluk Intan
31	T031	40	4.10865910914335	101.027850679652	Majlis Perbandaran Teluk Intan
32	T032	40	4.10832663409817	101.027822795001	Majlis Perbandaran Teluk Intan
33	T033	40	4.10796712271174	101.027784696553	Majlis Perbandaran Teluk Intan
34	T034	40	4.10759985909161	101.027742039189	Majlis Perbandaran Teluk Intan
35	T035	40	4.10723755020562	101.027693660194	Majlis Perbandaran Teluk Intan
36	T036	40	4.106872843457	101.027645072906	Majlis Perbandaran Teluk Intan
37	T037	40	4.10651207179904	101.027592624854	Majlis Perbandaran Teluk Intan
38	T038	40	4.1061418050552	101.027553291139	Majlis Perbandaran Teluk Intan
39	T039	40	4.10577695950594	101.027502701977	Majlis Perbandaran Teluk Intan
40	T040	40	4.10541086135521	101.027447695559	Majlis Perbandaran Teluk Intan
41	T041	40	4.10504974586152	101.027393726145	Majlis Perbandaran Teluk Intan
42	T042	40	4.10465616470227	101.027338631367	Majlis Perbandaran Teluk Intan
43	T043	40	4.10424721815397	101.027288088321	Majlis Perbandaran Teluk Intan
44	T044	40	4.10385691211499	101.027228833972	Majlis Perbandaran Teluk Intan
45	T045	40	4.10345829551701	101.027175889254	Majlis Perbandaran Teluk Intan
46	T046	40	4.10306213060986	101.02711985726	Majlis Perbandaran Teluk Intan
47	T047	40	4.10267137111976	101.027062295682	Majlis Perbandaran Teluk Intan
48	T048	40	4.10227478457308	101.026996469406	Majlis Perbandaran Teluk Intan
49	T049	40	4.10206208619257	101.027156793179	Majlis Perbandaran Teluk Intan
50	T050	40	4.10154383395958	101.02753182732	Majlis Perbandaran Teluk Intan
51	T051	40	4.10119423674015	101.027773141936	Majlis Perbandaran Teluk Intan
52	T052	40	4.10083538810892	101.028019589973	Majlis Perbandaran Teluk Intan
53	T053	40	4.10047363695535	101.028271776973	Majlis Perbandaran Teluk Intan

3.0 PROPOSED NEW POLE

Proposed New Pole Coordinate					
No.	Pole Number	Distance (m)	Latitude	Longitude	Local Authority
54	T054	40	4.10011302805727	101.028518199002	Majlis Perbandaran Teluk Intan
55	T055	40	4.09976308726696	101.028760600609	Majlis Perbandaran Teluk Intan
56	T056	40	4.09940409353777	101.028994824725	Majlis Perbandaran Teluk Intan
57	T057	40	4.09907131994816	101.029219036747	Majlis Perbandaran Teluk Intan
58	T058	40	4.0987189009203	101.029475387316	Majlis Perbandaran Teluk Intan
59	T059	40	4.09836109623538	101.029739250155	Majlis Perbandaran Teluk Intan
60	T060	40	4.09799141391038	101.029990869145	Majlis Perbandaran Teluk Intan
61	T061	40	4.09762982320861	101.030246907292	Majlis Perbandaran Teluk Intan
62	T062	40	4.09726778398077	101.030500643452	Majlis Perbandaran Teluk Intan
63	T063	40	4.096900200213	101.030742643273	Majlis Perbandaran Teluk Intan
64	T064	40	4.09653617783683	101.030985868649	Majlis Perbandaran Teluk Intan
65	T065	40	4.09618396021168	101.031237981765	Majlis Perbandaran Teluk Intan
66	T066	40	4.09583132217596	101.031506545015	Majlis Perbandaran Teluk Intan
67	T067	40	4.09545437665895	101.031757170015	Majlis Perbandaran Teluk Intan
68	T068	40	4.09509872019948	101.032013372453	Majlis Perbandaran Teluk Intan
69	T069	40	4.09480017621795	101.032214998762	Majlis Perbandaran Teluk Intan
70	T070	40	4.09452018721427	101.032410269546	Majlis Perbandaran Teluk Intan
71	T071	40	4.09425269146425	101.03259144956	Majlis Perbandaran Teluk Intan
72	T072	40	4.09396779851735	101.032800963002	Majlis Perbandaran Teluk Intan
73	T073	40	4.09367287584154	101.032998859866	Majlis Perbandaran Teluk Intan
74	T074	40	4.09338448977934	101.033199787064	Majlis Perbandaran Teluk Intan
75	T075	40	4.09309017045139	101.033411702129	Majlis Perbandaran Teluk Intan
76	T076	40	4.09279931544267	101.033593931358	Majlis Perbandaran Teluk Intan
77	T077	40	4.09249842998272	101.033785524504	Majlis Perbandaran Teluk Intan
78	EX T078	40	4.11303134365594	101.028371684385	Majlis Perbandaran Teluk Intan
79	EX T079	40	4.11328722415864	101.028396512265	Majlis Perbandaran Teluk Intan
80	EX T080	40	4.11356905973982	101.02843567603	Majlis Perbandaran Teluk Intan

3.0 PROPOSED NEW POLE

Proposed New Pole Coordinate					
No.	Pole Number	Distance (m)	Latitude	Longitude	Local Authority
81	EX T081	40	4.11402743141374	101.028484868436	Majlis Perbandaran Teluk Intan
82	EX T082	40	4.11461075393428	101.028568616077	Majlis Perbandaran Teluk Intan
83	EX T083	40	4.11510636566404	101.02865673433	Majlis Perbandaran Teluk Intan
84	EX T084	40	4.11561681974843	101.028726863049	Majlis Perbandaran Teluk Intan
85	EX T085	40	4.11610568167393	101.028807359607	Majlis Perbandaran Teluk Intan
86	T086	40	4.11621934723027	101.028492876601	JKR Hilir Perak
87	T087	40	4.11635415454642	101.028035194263	JKR Hilir Perak
88	T088	40	4.1165301238387	101.027552159345	JKR Hilir Perak
89	T089	40	4.11669529322456	101.027077933352	JKR Hilir Perak
90	T090	40	4.11685329861895	101.026637870447	JKR Hilir Perak
91	T091	40	4.11701163904552	101.026170928202	JKR Hilir Perak
92	T092	40	4.11609916272201	101.029005738936	JKR Hilir Perak
93	T093	40	4.116032830341	101.029266833357	JKR Hilir Perak
94	T094	40	4.11597019631712	101.029519519169	JKR Hilir Perak
95	T095	40	4.11590558910743	101.029792571295	JKR Hilir Perak
96	T096	40	4.11584449302964	101.03005064415	JKR Hilir Perak
97	T097	40	4.11576721745115	101.030309838113	JKR Hilir Perak
98	T098	40	4.1156872577694	101.030552715246	JKR Hilir Perak
99	T099	40	4.11564002490955	101.030819024787	JKR Hilir Perak
100	T100	40	4.11558429496409	101.031078055274	JKR Hilir Perak
101	T101	40	4.11552109948116	101.031366499365	JKR Hilir Perak
102	T102	40	4.11545276933652	101.031627204756	JKR Hilir Perak
103	T103	40	4.11539100000919	101.031878102699	JKR Hilir Perak
104	T104	40	4.11532858462098	101.032136041322	JKR Hilir Perak
105	T105	40	4.11526611379118	101.032369367901	JKR Hilir Perak
106	T106	40	4.11522043399745	101.032616350259	JKR Hilir Perak
107	T107	40	4.11516992683362	101.032858112266	JKR Hilir Perak

3.0 PROPOSED NEW POLE

Proposed New Pole Coordinate					
No.	Pole Number	Distance (m)	Latitude	Longitude	Local Authority
108	T108	40	4.11510726510759	101.033078829809	JKR Hilir Perak
109	T109	40	4.11504274934648	101.033383783417	JKR Hilir Perak
110	T110	40	4.11497420615082	101.03366442444	JKR Hilir Perak
111	T111	40	4.11491131844842	101.033923460887	JKR Hilir Perak
112	T112	40	4.11484614313031	101.034193089472	JKR Hilir Perak
113	T113	40	4.1147830361328	101.034439975238	JKR Hilir Perak
114	T114	40	4.11472192768048	101.034714381766	JKR Hilir Perak
115	T115	40	4.11465490411083	101.034968157352	JKR Hilir Perak
116	T116	40	4.11458062171224	101.035238700406	JKR Hilir Perak
117	T117	40	4.11450229602967	101.035494899256	JKR Hilir Perak
118	T118	40	4.11441879275887	101.035758205117	JKR Hilir Perak
119	T119	40	4.11433131265334	101.0360125296	JKR Hilir Perak
120	T120	40	4.11420614331338	101.036255646782	JKR Hilir Perak
121	T121	40	4.11405426352368	101.036478704604	JKR Hilir Perak
122	T122	40	4.11387858199612	101.036689981525	JKR Hilir Perak
123	T123	40	4.11370703613549	101.036889770936	JKR Hilir Perak
124	T124	40	4.11351124024151	101.03707565516	JKR Hilir Perak
125	T125	40	4.1133193057078	101.037243742447	JKR Hilir Perak
126	T126	40	4.11312484290783	101.037391561599	JKR Hilir Perak
127	T127	40	4.11290560084741	101.037547596889	JKR Hilir Perak
128	T128	40	4.11268782798492	101.037704460682	JKR Hilir Perak
129	T129	40	4.11246020819131	101.037859910649	JKR Hilir Perak
130	T130	40	4.11225162802649	101.038007551968	JKR Hilir Perak
131	T131	40	4.11202802302806	101.038157824126	JKR Hilir Perak
132	T132	40	4.11180565091203	101.038318445095	JKR Hilir Perak
133	T133	40	4.11158830784735	101.03847324569	JKR Hilir Perak
134	T134	40	4.11136878062932	101.038623805135	JKR Hilir Perak
135	T135	40	4.1111428195938	101.038772818931	JKR Hilir Perak
136	T136	40	4.11091263951545	101.03892801516	JKR Hilir Perak
137	T137	40	4.11070347843672	101.039080569583	JKR Hilir Perak
138	T138	40	4.11048049574641	101.039225531543	JKR Hilir Perak
139	T139	40	4.11025629132023	101.039387275633	JKR Hilir Perak
140	T140	40	4.11002983792559	101.039539409639	JKR Hilir Perak
141	T141	40	4.10980953296059	101.039695493155	JKR Hilir Perak
142	T142	40	4.10959178532058	101.039853606467	JKR Hilir Perak
143	T143	40	4.10935614055059	101.039991530379	JKR Hilir Perak

3.0 PROPOSED NEW POLE

Proposed New Pole Coordinate					
No.	Pole Number	Distance (m)	Latitude	Longitude	Local Authority
144	T144	40	4.10914580042146	101.040145075024	JKR Hilir Perak
145	T145	40	4.10891035452079	101.040316473958	JKR Hilir Perak
146	T146	40	4.10868138092861	101.040476501781	JKR Hilir Perak
147	T147	40	4.10848207549147	101.040614942488	JKR Hilir Perak
148	T148	40	4.10827119769774	101.040768935397	JKR Hilir Perak
149	T149	40	4.10806706848976	101.040907267104	JKR Hilir Perak
150	T150	40	4.10784085854801	101.041059285426	JKR Hilir Perak
151	T151	40	4.10763715107295	101.04121411886	JKR Hilir Perak
152	T152	40	4.10739729172009	101.041373491274	JKR Hilir Perak
153	T153	40	4.10716107314766	101.041524459369	JKR Hilir Perak
154	T154	40	4.10694028461475	101.041678247814	JKR Hilir Perak
155	T155	40	4.1067251145212	101.041842586266	JKR Hilir Perak
156	T156	40	4.10648496355599	101.041985419872	JKR Hilir Perak
157	T157	40	4.1062784362553	101.042155318575	JKR Hilir Perak
158	T158	40	4.10605114765564	101.042317011046	JKR Hilir Perak
159	T159	40	4.10582131395698	101.042446623281	JKR Hilir Perak
160	T160	40	4.10559423911736	101.042628461942	JKR Hilir Perak
161	T161	40	4.10536321388484	101.042788619934	JKR Hilir Perak
162	T162	40	4.10513985296512	101.042943986524	JKR Hilir Perak
163	T163	40	4.10489722746781	101.043108580889	JKR Hilir Perak
164	T164	40	4.10468315672865	101.043255780301	JKR Hilir Perak
165	T165	40	4.10445850624523	101.043427878717	JKR Hilir Perak
166	T166	40	4.10424116295842	101.043576628228	JKR Hilir Perak
167	T167	40	4.10399824909807	101.043741272539	JKR Hilir Perak
168	T168	40	4.10377801569042	101.043889860452	JKR Hilir Perak
169	T169	40	4.10356384087251	101.044046631413	JKR Hilir Perak
170	T170	40	4.10332809907345	101.044201364639	JKR Hilir Perak
171	T171	40	4.10310608744084	101.044356704574	JKR Hilir Perak
172	T172	40	4.10287466518994	101.044523792918	JKR Hilir Perak
173	T173	40	4.10263702722599	101.044686370346	JKR Hilir Perak
174	T174	40	4.10239276167079	101.04485376464	JKR Hilir Perak
175	T175	40	4.10217948228031	101.045004914777	JKR Hilir Perak
176	T176	40	4.10196032565135	101.04515347702	JKR Hilir Perak
177	T177	40	4.10172720342406	101.045312447782	JKR Hilir Perak
178	T178	40	4.10150237166733	101.045469948484	JKR Hilir Perak
179	T179	40	4.10126184972875	101.045627687685	JKR Hilir Perak



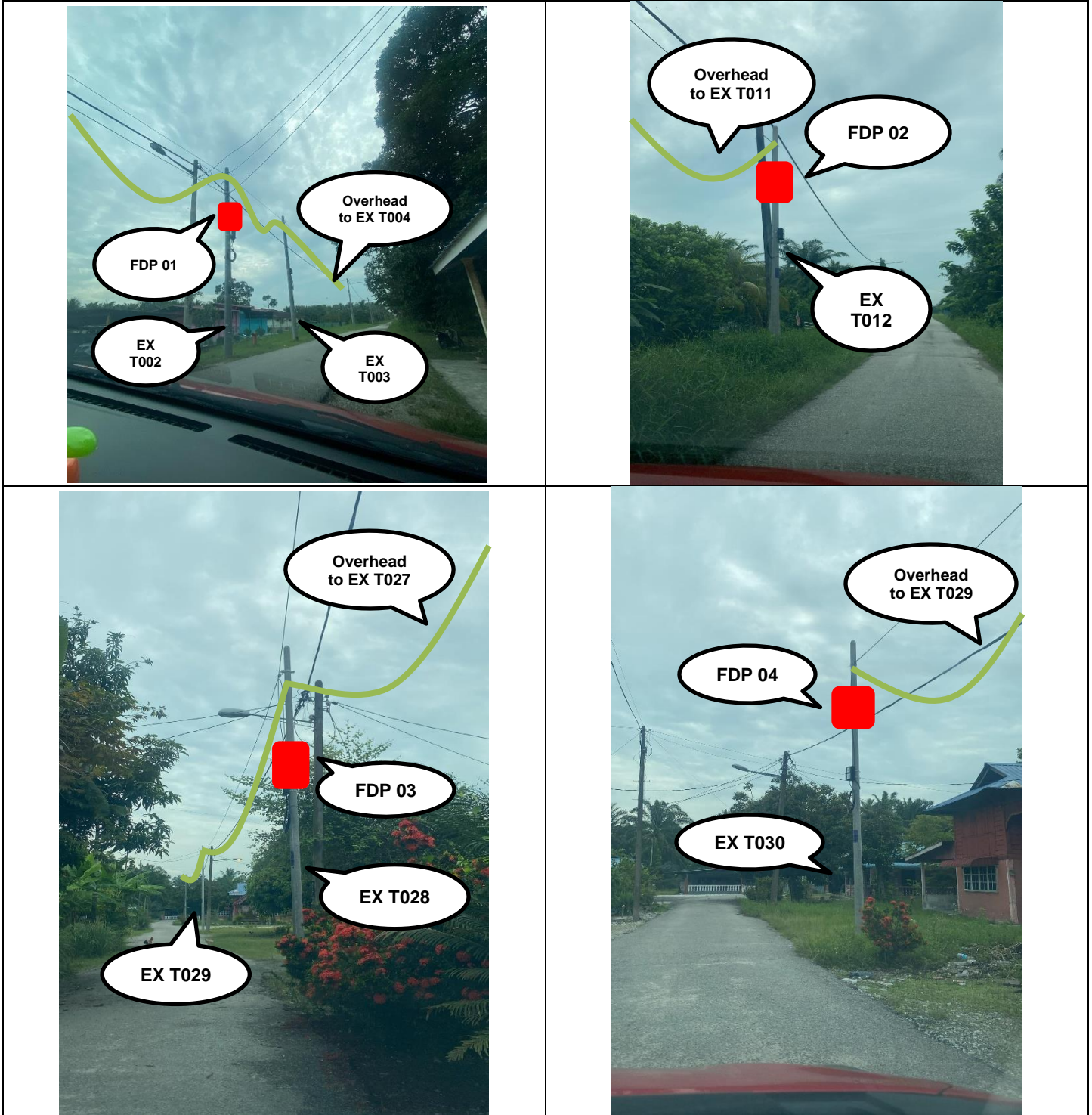
PROJEK PENYEDIAAN DAN PENYELENGGARAAN POINT OF PRESENCE (POP) FASA 2: HAB INFRASTRUKTUR GENTIAN OPTIK BERHAMPIRAN DENGAN SEKOLAH, KAWASAN PERINDUSTRIAN, PREMIS KERAJAAN DAN KOMUNITI SEKITARNYA OLEH KEMENTERIAN KOMUNIKASI MALAYSIA – ZON UTARA (KKMM.400-11/17/132(1))



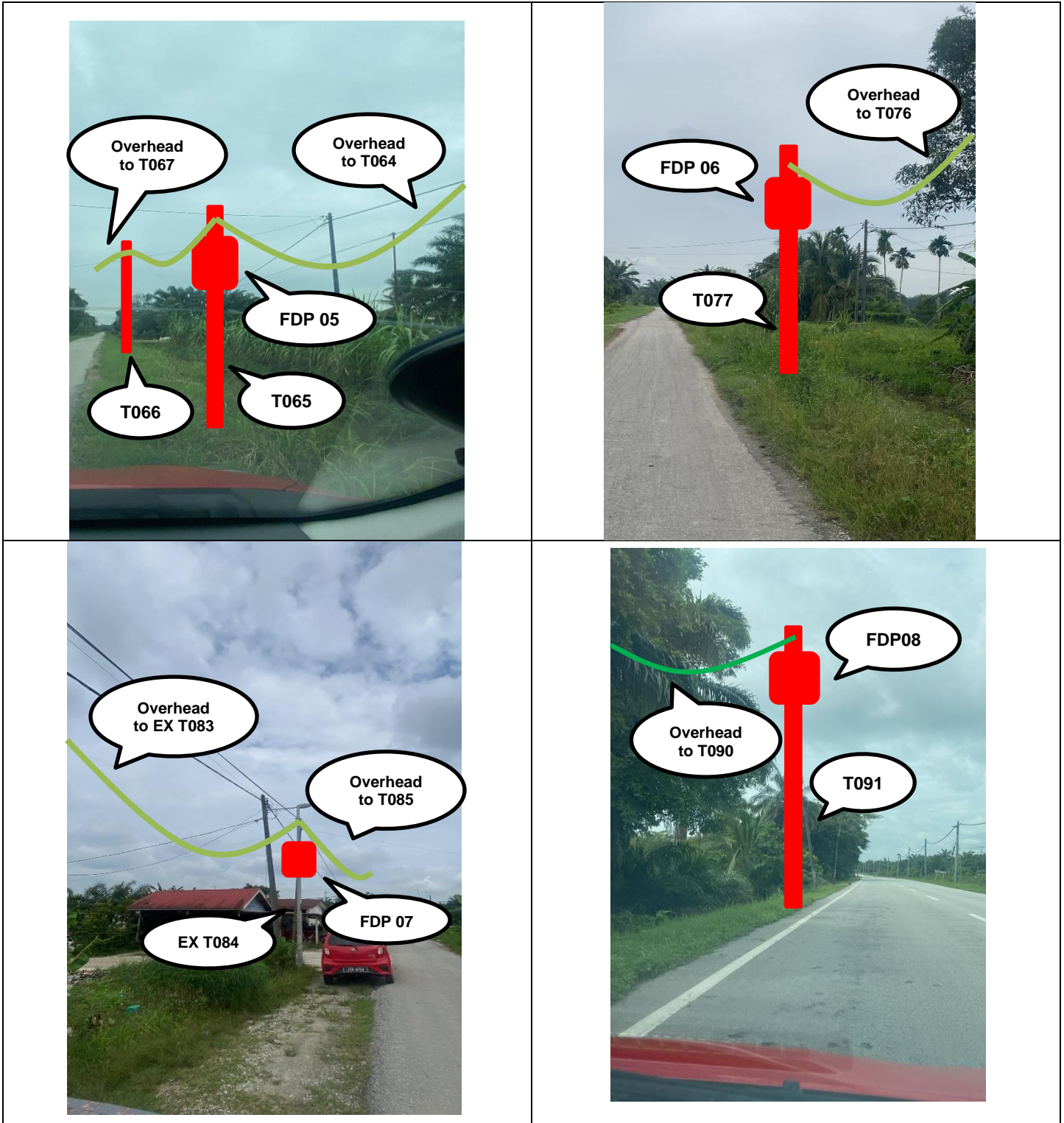
3.0 PROPOSED NEW POLE

Proposed New Pole Coordinate					
No.	Pole Number	Distance (m)	Latitude	Longitude	Local Authority
180	T180	40	4.10104511588073	101.045792611201	JKR Hilir Perak
181	T181	40	4.10081460040134	101.045944712046	JKR Hilir Perak
182	T182	40	4.10057388463277	101.046117612109	JKR Hilir Perak
183	T183	40	4.10035827978046	101.046267866486	JKR Hilir Perak
184	T184	40	4.10013448191481	101.046426417989	JKR Hilir Perak
185	T185	40	4.0999008894002	101.046576050815	JKR Hilir Perak
186	T186	40	4.09967273104012	101.046734563908	JKR Hilir Perak
187	T187	40	4.09947831814843	101.046874510001	JKR Hilir Perak

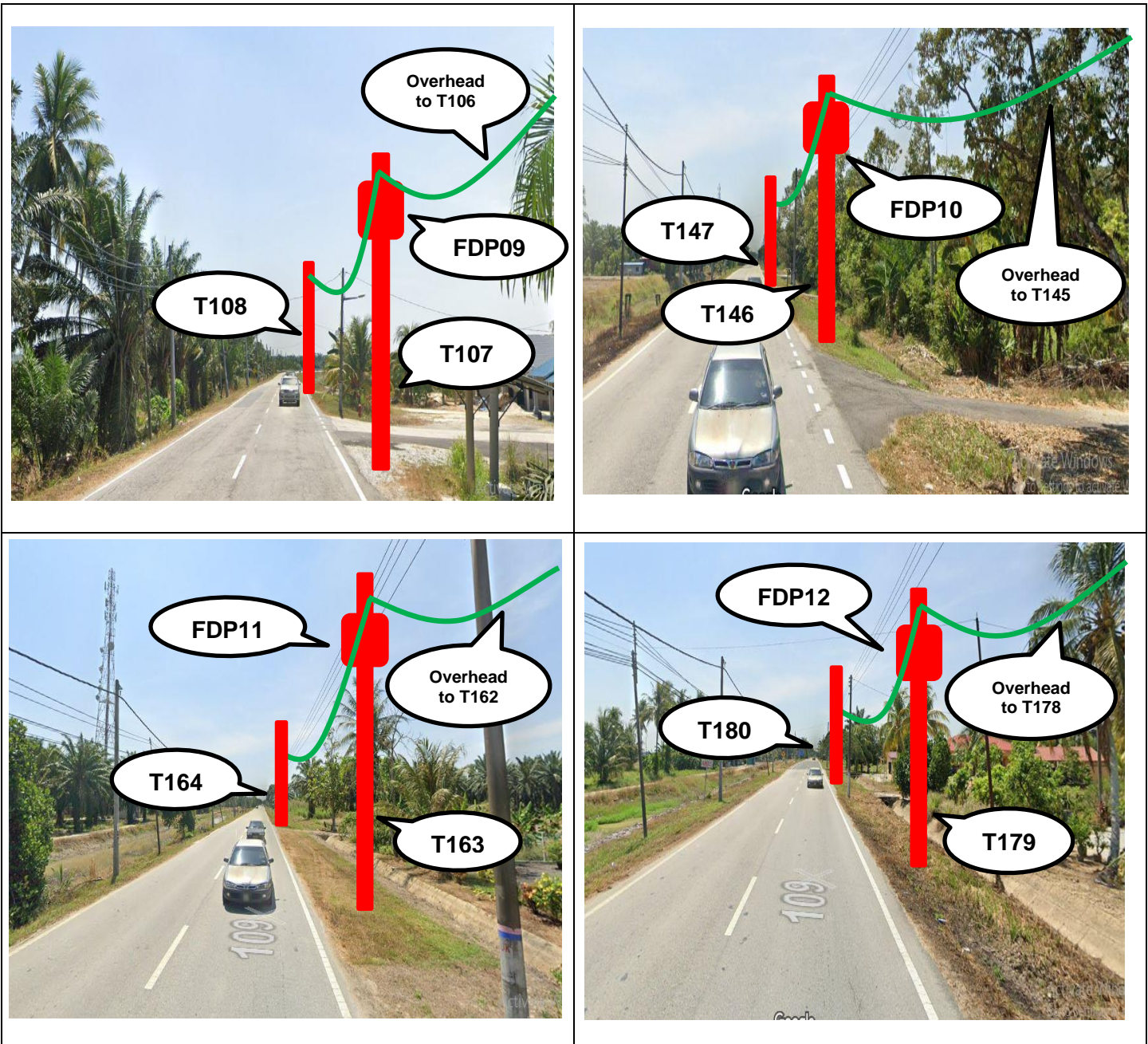
4.0 SITE PHOTOS - PROPOSED NEW POLE



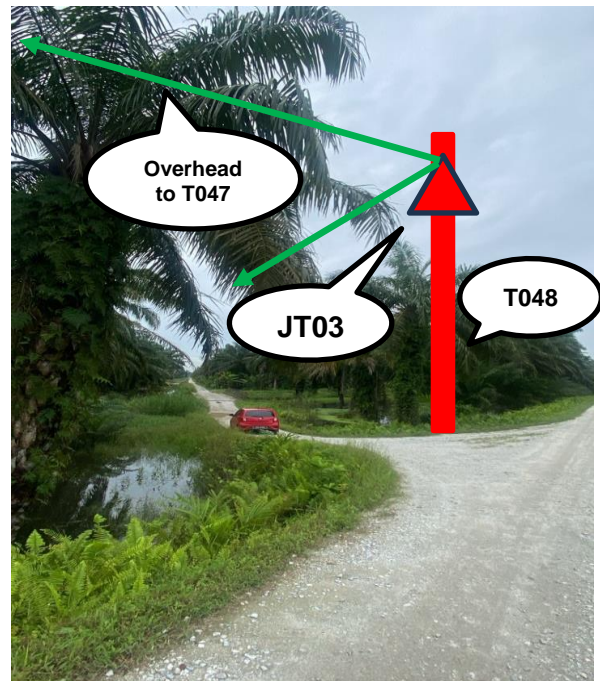
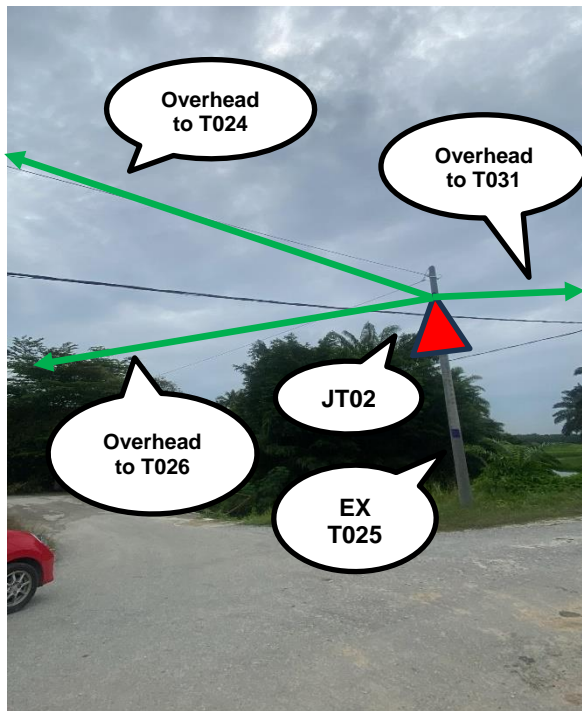
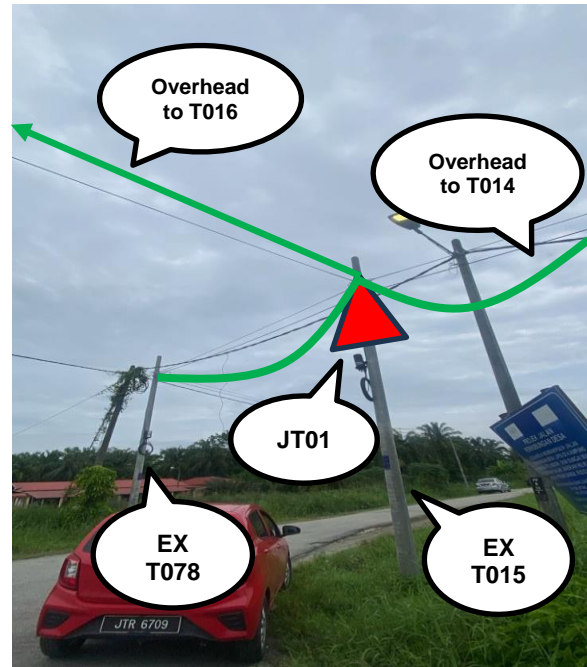
4.0 SITE PHOTOS - PROPOSED NEW POLE



4.0 SITE PHOTOS - PROPOSED NEW POLE



4.0 SITE PHOTOS - PROPOSED NEW POLE





PROJEK PENYEDIAAN DAN PENYELENGGARAAN POINT OF PRESENCE (POP) FASA 2: HAB INFRASTRUKTUR GENTIAN OPTIK BERHAMPIRAN DENGAN SEKOLAH, KAWASAN PERINDUSTRIAN, PREMIS KERAJAAN DAN KOMUNITI SEKITARNYA OLEH KEMENTERIAN KOMUNIKASI MALAYSIA – ZON UTARA (KKMM.400-11/17/132(1))



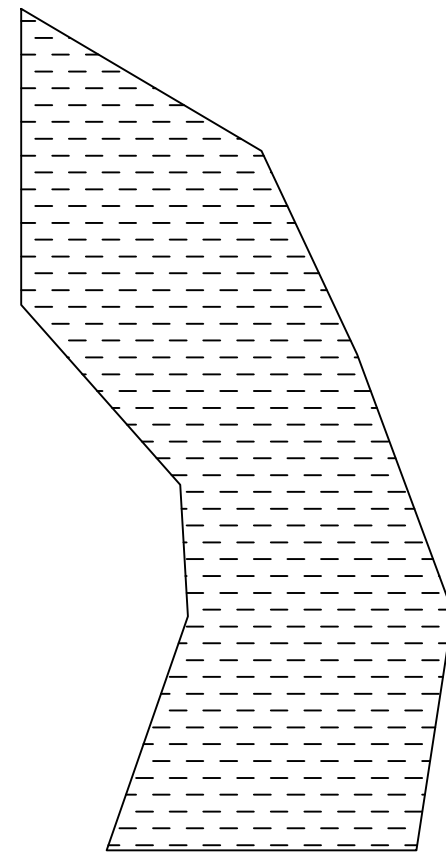
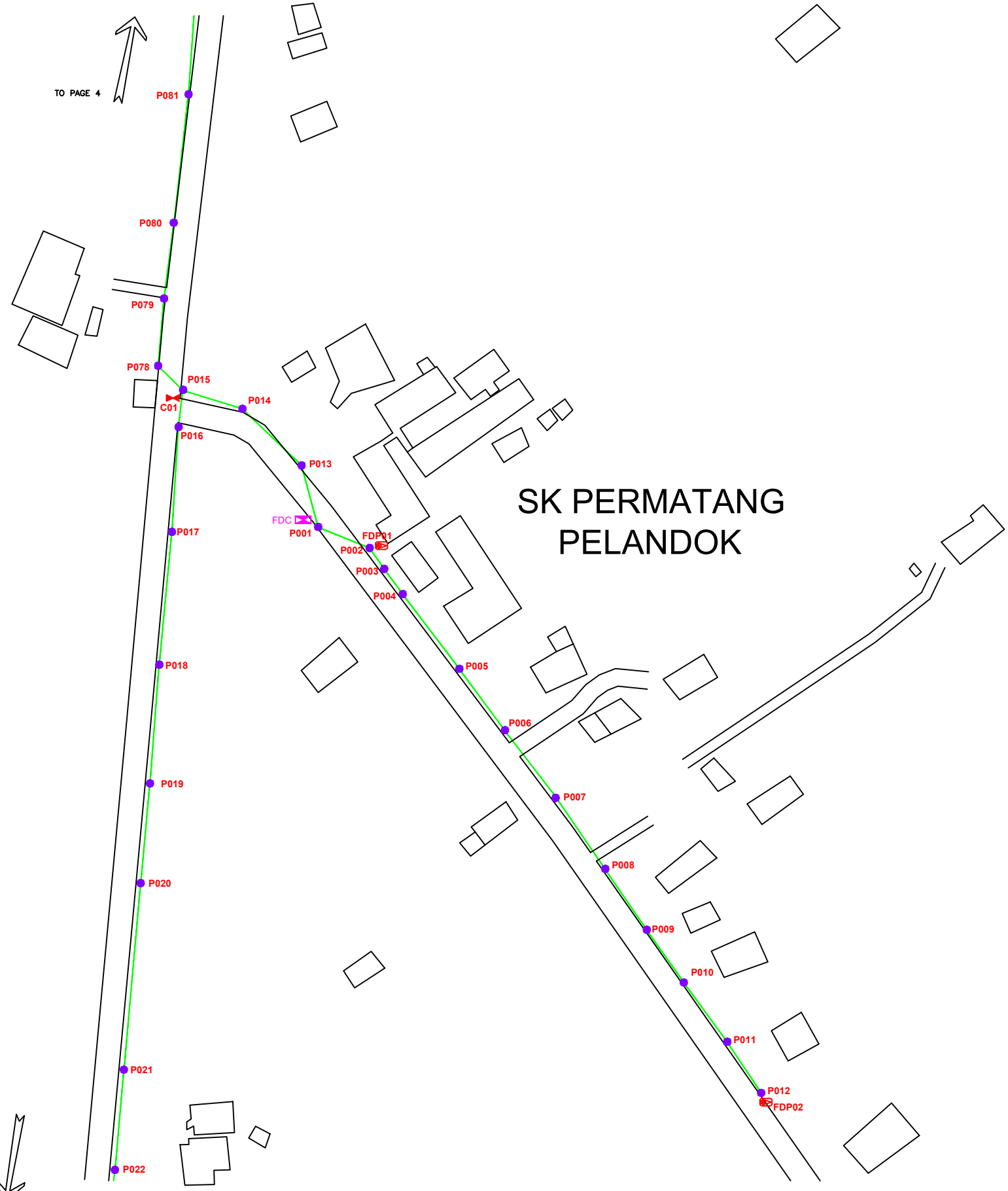
5.0 3rd PARTIES DEPENDENCIES

NO	LOCAL COUNCIL / AUTHORITY	REMARK
1	Majlis Perbandaran Teluk Intan	3,910M
2	JKR Hilir Perak	4,080M



TO PAGE 4

TO PAGE 2



SK PERMATANG PELANDOK

LEGEND

	12C FOC		Installed 1:4 splitter in FDC		INSTALLED POLE (9M)		NEW MANHOLE		TENSION SMALL / TENSION BIG		MH NO.
	24C FOC		FDP		INSTALLED RISER		EXISTING MANHOLE		CLOSURE NO.		EXISTING TNB POLE NO.
	48C FOC		CLOSURE		SUSPENSION BIG		EXISTING ALLO POLE		FDP NO.		NEW POLE NO.
	90C FOC		NEW MANHOLE (PT)		SUSPENSION SMALL		LOOP		FDC NO.		SEE A TO B
	144C FOC		INSTALLED POLE		FDC		FDP BOUNDARY		SEE SHEET XXX		SEE SHEET XXX

KEY PLAN

PROJECT OWNER

MAIN CONTRACTOR

SUB-CONTRACTOR

KNZ ENGINEERING SDN BHD
 NO. 60 & 60A, Jalan Kiebang Indah 1, Medan Kiebang Indah, 30100 Ipoh, Perak
 No Tel: 019-3695071
 Email: admin@knzengineering.com.my
 Website: www.knzengineering.com.my

PROJECT TITLE

SEKOLAH KEBANGSAAN PERMATANG PELANDOK

DRAWING TITLE

TP DRAWING POP 2 AT SEKOLAH KEBANGSAAN PERMATANG PELANDOK

PROJECT PHASE

PROJECT PHASE 2

DESIGN BY	ZUL FAHMIE	DATE	26/12/2024
DRAWN BY	ZUL FAHMIE	SCALE	NOT TO SCALE
CHECKED BY	AZHAN HARIS	JOB NUMBER	ABA5068
DRAWING NUMBER		ABA5068	
THIS PRINT AND ITS COPYRIGHT ARE THE PROPERTY OF KNZ ENGINEERING SDN. BHD.		1/6	
		A3	



LEGEND

	12C FOC		Installed 1:4 splitter in FDC		INSTALLED POLE (9M)		NEW MANHOLE		TS / TB	TENSION SMALL / TENSION BIG		MH1	MH NO.
	24C FOC		FDP		INSTALLED RISER		EXISTING MANHOLE		TKS-1	EXISTING TNB POLE NO.		P001	NEW POLE NO.
	48C FOC		CLOSURE		SUSPENSION BIG		EXISTING ALLO POLE		C01	CLOSURE NO.			SEE A.A TO THIS DRAWING
	90C FOC		NEW MANHOLE (PT)		SUSPENSION SMALL		LOOP		FDP1	FDP NO.			SEE SHEET XXXX
	144C FOC		INSTALLED POLE		FDC		FDP BOUNDARY		FDC	FDC NO.			SEE SHEET XXXX

KEY PLAN

PROJECT OWNER

MAIN CONTRACTOR

SUB-CONTRACTOR

KNZ ENGINEERING SDN BHD
 NO. 60 & 60A, Jalan Klebang Indah 1, Medan Klebang Indah, 30100 Ipoh, Perak
 No Tel: 019-3695071
 Email: admin@knzengineering.com.my
 Website: www.knzengineering.com.my

PROJECT TITLE

SEKOLAH KEBANGSAAN PERMATANG PELANDOK

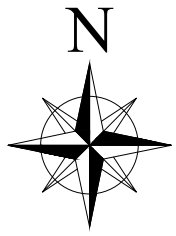
DRAWING TITLE

TP DRAWING POP 2 AT SEKOLAH KEBANGSAAN PERMATANG PELANDOK

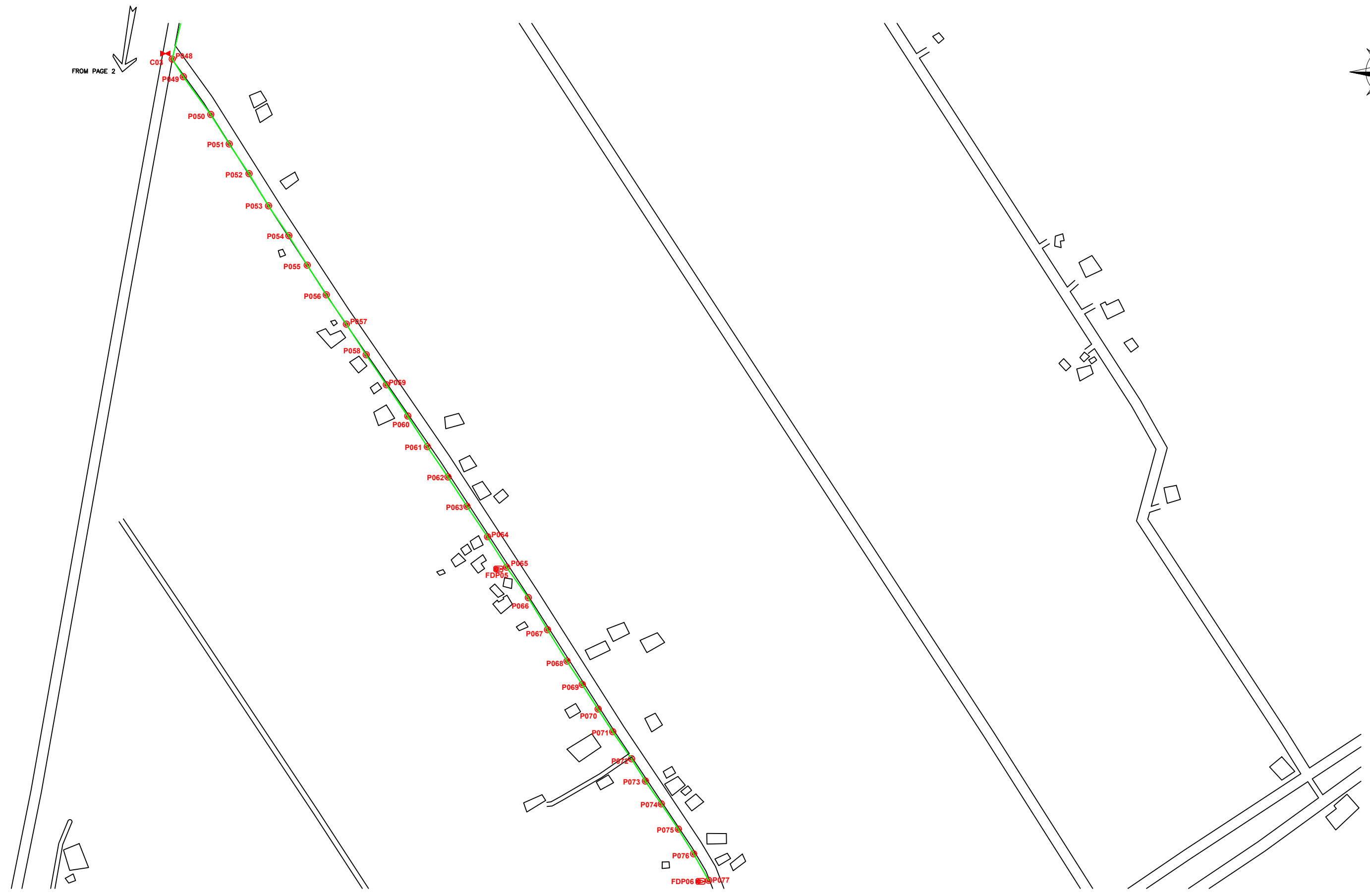
PROJECT PHASE

PROJECT PHASE 2

DESIGN BY	ZUL FAHMIE	DATE	26/12/2024
DRAWN BY	ZUL FAHMIE	SCALE	NOT TO SCALE
CHECKED BY	AZHAN HARIS	JOB NUMBER	ABA5068
DRAWING NUMBER		ABA5068	
THIS PRINT AND ITS COPYRIGHT ARE THE PROPERTY OF KNZ ENGINEERING SDN. BHD.		2/6	
		A3	



FROM PAGE 2



LEGEND

	12C FOC		INSTALLED POLE (9M)		NEW MANHOLE		TENSION SMALL / TENSION BIG		MH NO.
	24C FOC		INSTALLED RISER		HOUSE NUMBER		EXISTING MANHOLE		EXISTING TNB POLE NO.
	48C FOC		CLOSURE		EXISTING ALLO POLE		CLOSURE NO.		NEW POLE NO.
	90C FOC		NEW MANHOLE (PT)		LOOP		FDP NO.		SEE SHEET XXX
	144C FOC		INSTALLED POLE		FDC		FDC NO.		SEE SHEET XXX

KEY PLAN

PROJECT OWNER

KEPENTERIAN KOMUNIKASI DAN DIGITAL

MAIN CONTRACTOR

SUB-CONTRACTOR

KNZ ENGINEERING SDN BHD
 NO. 60 & 60A, Jalan Klebang Indah 1,
 Medan Klebang Indah, 30100 Ipoh, Perak
 No Tel: 019-3695071
 Email: admin@knzengineering.com.my
 Website: www.knzengineering.com.my

PROJECT TITLE

SEKOLAH KEBANGSAAN PERMATANG PELANDOK

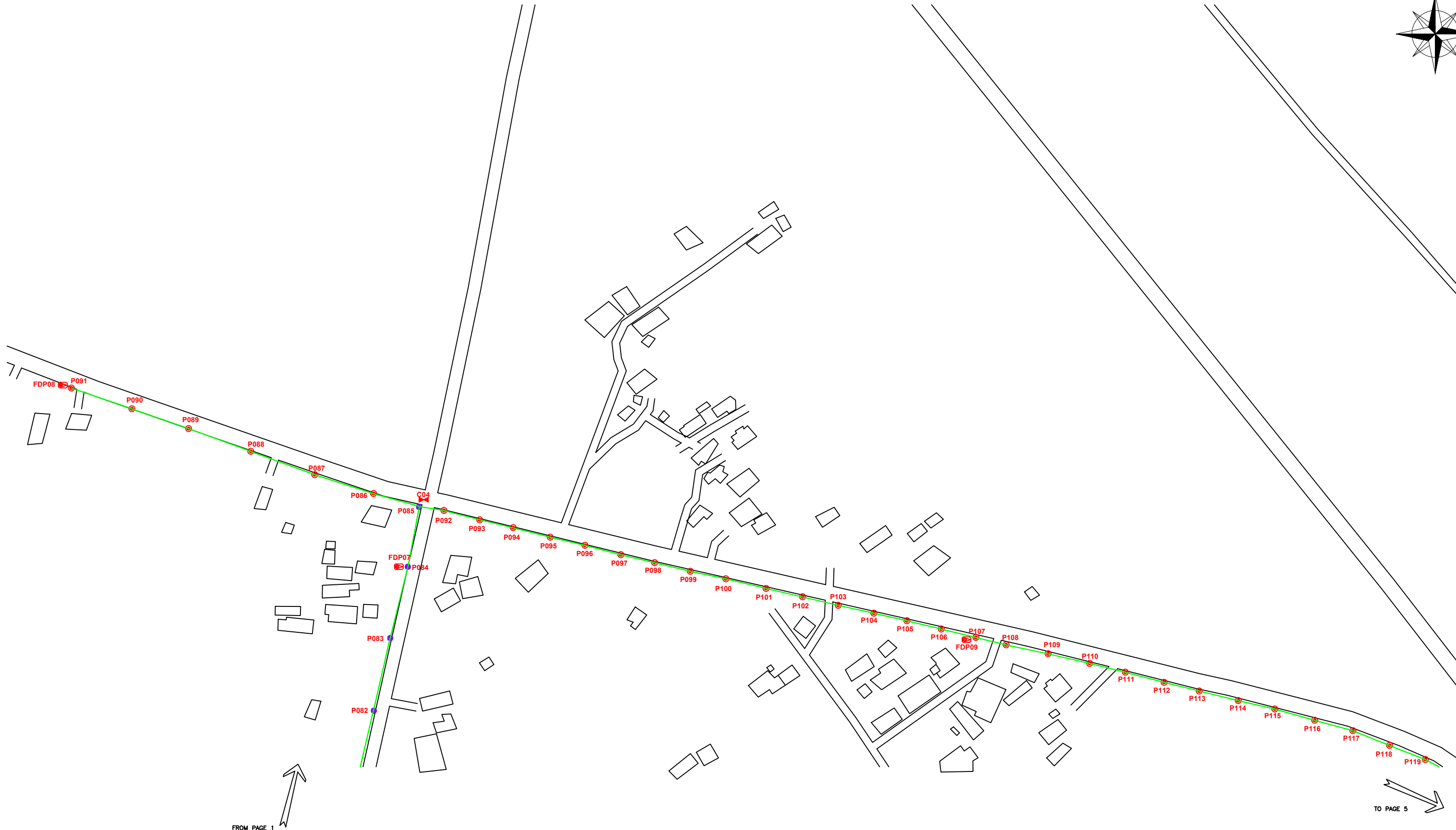
DRAWING TITLE

TP DRAWING POP 2 AT SEKOLAH KEBANGSAAN PERMATANG PELANDOK

PROJECT PHASE

PROJECT PHASE 2

DESIGN BY	ZUL FAHMIE	DATE	26/12/2024
DRAWN BY	ZUL FAHMIE	SCALE	NOT TO SCALE
CHECKED BY	AZHAN HARIS	JOB NUMBER	ABA5068
DRAWING NUMBER		ABA5068	
THIS PRINT AND ITS COPYRIGHT ARE THE PROPERTY OF KNZ ENGINEERING SDN. BHD.			3/6
			A3



LEGEND					
	12C FOC		Installed 1:4 splitter in FDC		NEW MANHOLE
	24C FOC		FDP		TENSION SMALL / TENSION BIG
	48C FOC		CLOSURE		EXISTING MANHOLE
	90C FOC		NEW MANHOLE (PT)		CLOSURE NO.
	144C FOC		INSTALLED POLE		FDP NO.
			INSTALLED POLE (9M)		FDC NO.
			INSTALLED RISER		MH NO.
			SUSPENSION BIG		EXISTING TNB POLE NO.
			SUSPENSION SMALL		NEW POLE NO.
			FDC		SEE SHEET XXX
			LOOP		
			FDP BOUNDARY		

KEY PLAN

PROJECT OWNER

MAIN CONTRACTOR

SUB-CONTRACTOR

KNZ ENGINEERING SDN BHD
 NO. 60 & 60A, Jalan Klebang Indah 1, Medan Klebang Indah, 30100 Ipoh, Perak
 No Tel: 019-3695071
 Email: admin@knzengineering.com.my
 Website: www.knzengineering.com.my

PROJECT TITLE

SEKOLAH KEBANGSAAN PERMATANG PELANDOK

DRAWING TITLE

TP DRAWING POP 2 AT SEKOLAH KEBANGSAAN PERMATANG PELANDOK

PROJECT PHASE

PROJECT PHASE 2

DESIGN BY	ZUL FAHMIE	DATE	26/12/2024
DRAWN BY	ZUL FAHMIE	SCALE	NOT TO SCALE
CHECKED BY	AZHAN HARISS	JOB NUMBER	ABA5068
DRAWING NUMBER		ABA5068	
THIS PRINT AND ITS COPYRIGHT ARE THE PROPERTY OF KNZ ENGINEERING SDN. BHD.			4/6
			A3



LEGEND

12C FOC	Installed 1:4 splitter in FDC	INSTALLED POLE (9M)	NEW MANHOLE	TENSION SMALL / TENSION BIG	MH1	MH NO.
24C FOC	FDP	INSTALLED RISER	HOUSE NUMBER	EXISTING MANHOLE	TKS-1	EXISTING TNB POLE NO.
48C FOC	CLOSURE	SUSPENSION BIG	EXISTING ALLO POLE	CLOSURE NO.	P001	NEW POLE NO.
90C FOC	NEW MANHOLE (PT)	SUSPENSION SMALL	LOOP	FDP NO.	SEE A3 TO B3000	SEE SHEET XXX
144C FOC	INSTALLED POLE	FDC	FDP BOUNDARY	FDC NO.		

KEY PLAN

PROJECT OWNER



MAIN CONTRACTOR



SUB-CONTRACTOR



KNZ ENGINEERING SDN BHD
 NO. 60 & 60A, Jalan Klebang Indah 1, Medan Klebang Indah, 30100 Ipoh, Perak
 No Tel: 019-3695071
 Email: admin@knzengineering.com.my
 Website: www.knzengineering.com.my

PROJECT TITLE

SEKOLAH KEBANGSAAN PERMATANG PELANDOK

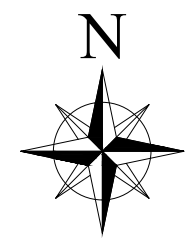
DRAWING TITLE

TP DRAWING POP 2 AT SEKOLAH KEBANGSAAN PERMATANG PELANDOK

PROJECT PHASE

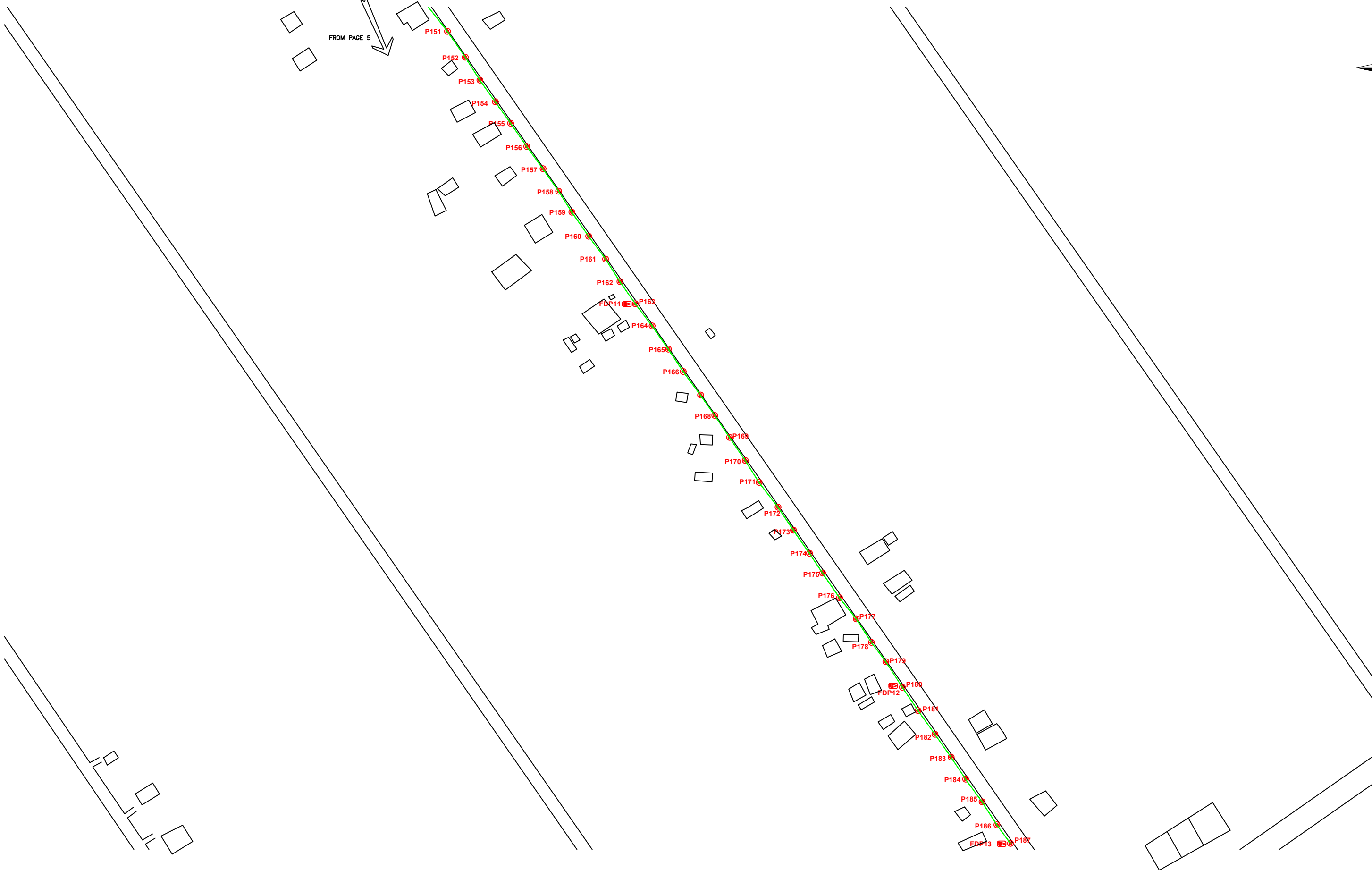
PROJECT PHASE 2

DESIGN BY	ZUL FAHMIE	DATE	26/12/2024
DRAWN BY	ZUL FAHMIE	SCALE	NOT TO SCALE
CHECKED BY	AZHAN HARIS	JOB NUMBER	ABA5068
DRAWING NUMBER		ABA5068	
THIS PRINT AND ITS COPYRIGHT ARE THE PROPERTY OF KNZ ENGINEERING SDN. BHD.			5/6
			A3





FROM PAGE 5



LEGEND	
12C FOC	Installed 1:4 splitter in FDC
24C FOC	FDP
48C FOC	CLOSURE
90C FOC	NEW MANHOLE (PT)
144C FOC	INSTALLED POLE
INSTALLED POLE (9M)	INSTALLED RISER
NEW MANHOLE	SUSPENSION BIG
HOUSE NUMBER	SUSPENSION SMALL
EXISTING ALLO POLE	FDC
LOOP	
FDP BOUNDARY	
NEW MANHOLE	TENSION SMALL / TENSION BIG
HOUSE NUMBER	EXISTING MANHOLE
EXISTING ALLO POLE	CLOSURE NO.
LOOP	FDP NO.
FDP BOUNDARY	FDC NO.
MH NO.	EXISTING TNB POLE NO.
NEW POLE NO.	

KEY PLAN

PROJECT OWNER

MAIN CONTRACTOR

SUB-CONTRACTOR

KNZ ENGINEERING SDN BHD
 NO. 60 & 60A, Jalan Klebang Indah 1, Medan Klebang Indah, 30100 Ipoh, Perak
 No Tel: 019-3695071
 Email: admin@knzengineering.com.my
 Website: www.knzengineering.com.my

PROJECT TITLE

SEKOLAH KEBANGSAAN PERMATANG PELANDOK

DRAWING TITLE

TP DRAWING POP 2 AT SEKOLAH KEBANGSAAN PERMATANG PELANDOK

PROJECT PHASE

PROJECT PHASE 2

DESIGN BY	ZUL FAHMIE	DATE	26/12/2024
DRAWN BY	ZUL FAHMIE	SCALE	NOT TO SCALE
CHECKED BY	AZHAN HARIS	JOB NUMBER	ABA5068
DRAWING NUMBER		ABA5068	
THIS PRINT AND ITS COPYRIGHT ARE THE PROPERTY OF KNZ ENGINEERING SDN. BHD.			6/6
			A3