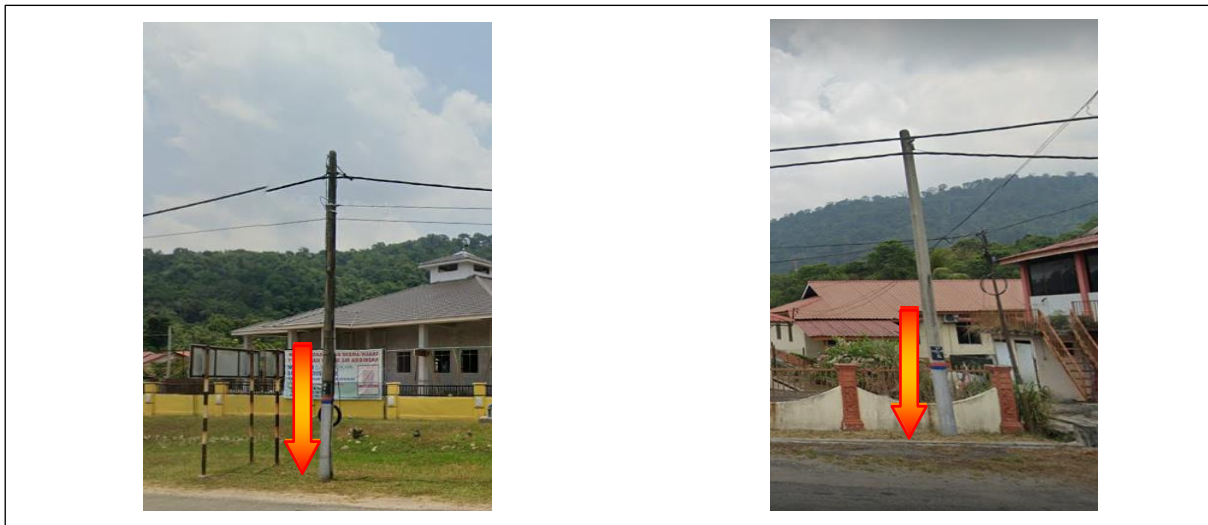


## POP2 D/SIDE SM ADDINIAH JELUTONG – Technical Proposal

Company Name	:	Kuasa Sekata Sdn. Bhd.
Company Address	:	No.2, Kompleks Penghulu Tasik Biru Kundang, 48050 Rawang Selangor
Prepared By	:	Muhammad Fahmi Bin Ahmad Zure
Date	:	28/08/2024



POINT A

POINT B

### Starting Point

Site / Boundary Name	:	SM ADDINIAH JELUTONG
Address	:	Kampung Jelutong
District	:	Changkat Jering
Postcode	:	34850
State	:	Perak
GPS Coordinate	:	4.780619, 100.741050
LRD	:	A

### End Point

Site / Boundary Name	:	PEJABAT PENGHULU MUKIM BUKIT GANTANG
Address	:	Bukit Gantang
District	:	Changkat Jering
Postcode	:	34850
State	:	Perak
GPS Coordinate	:	4.783582, 100.760100
LRD	:	B



PROJEK PENYEDIAAN DAN PENYELENGGARAAN POINT OF PRESENCE (POP) FASA 2: HAB INFRASTRUKTUR GENTIAN OPTIK BERHAMPIRAN DENGAN SEKOLAH, KAWASAN PERINDUSTRIAN, PREMIS KERAJAAN DAN KOMUNITI SEKITARNYA OLEH KEMENTERIAN KOMUNIKASI MALAYSIA - ZON UTARA (KKMM.400-11/17/132(1))



## 1.0 Work Summary

No	Proposed Distance and Method	Unit	Qty
1	Horizontal Directional Drilling (HDD)	m	0
2	Carriage Way Open trench (CW)	m	0
3	Grass Verge Open Trenching (GV)	m	0
4	Micro trenching (MT)	m	0
	Total		0

	Other Information	Unit	Qty
1	Proposed Manhole	EA	0
2	Proposed Pole	EA	108
3	Joint Closure	EA	2
4	Estimated time required for completion	days	40



PROJEK PENYEDIAAN DAN PENYELENGGARAAN POINT OF PRESENCE (POP) FASA 2: HAB INFRASTRUKTUR GENTIAN OPTIK BERHAMPIRAN DENGAN SEKOLAH, KAWASAN PERINDUSTRIAN, PREMIS KERAJAAN DAN KOMUNITI SEKITARNYA OLEH KEMENTERIAN KOMUNIKASI MALAYSIA - ZON UTARA (KKMM.400-11/17/132(1))

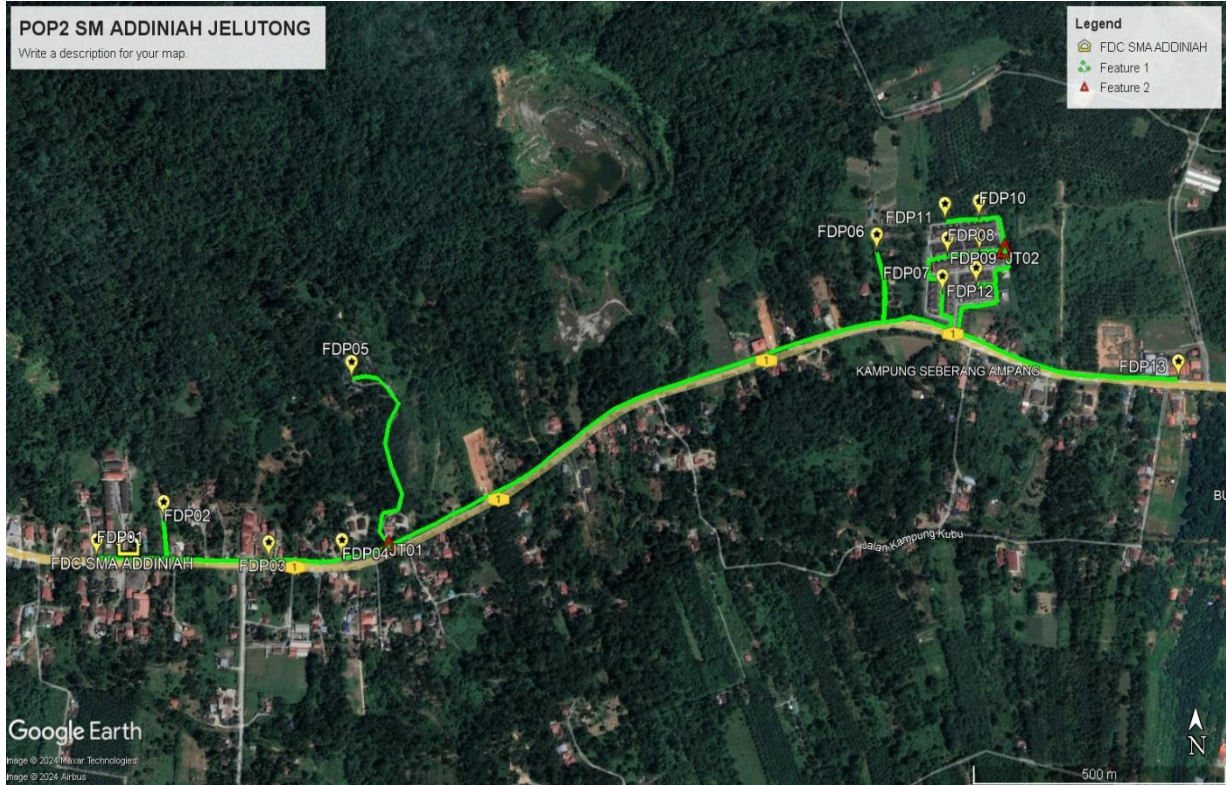


## 2.0 Local Authority Summary

### 1. Daerah Changkat Jering

Bil	Items	Owner	Quantity (ea)	Distance (m)
1	New Pole	JKR	66	2,310
		Pejabat Daerah & Tanah	18	630
		Majlis Perbandaran	25	750
Total				3,898m

### 3.0 Site Plan – KMZ (Overview site area)



#### 4.0 Site Plan – KMZ Routing (All Local Authority)



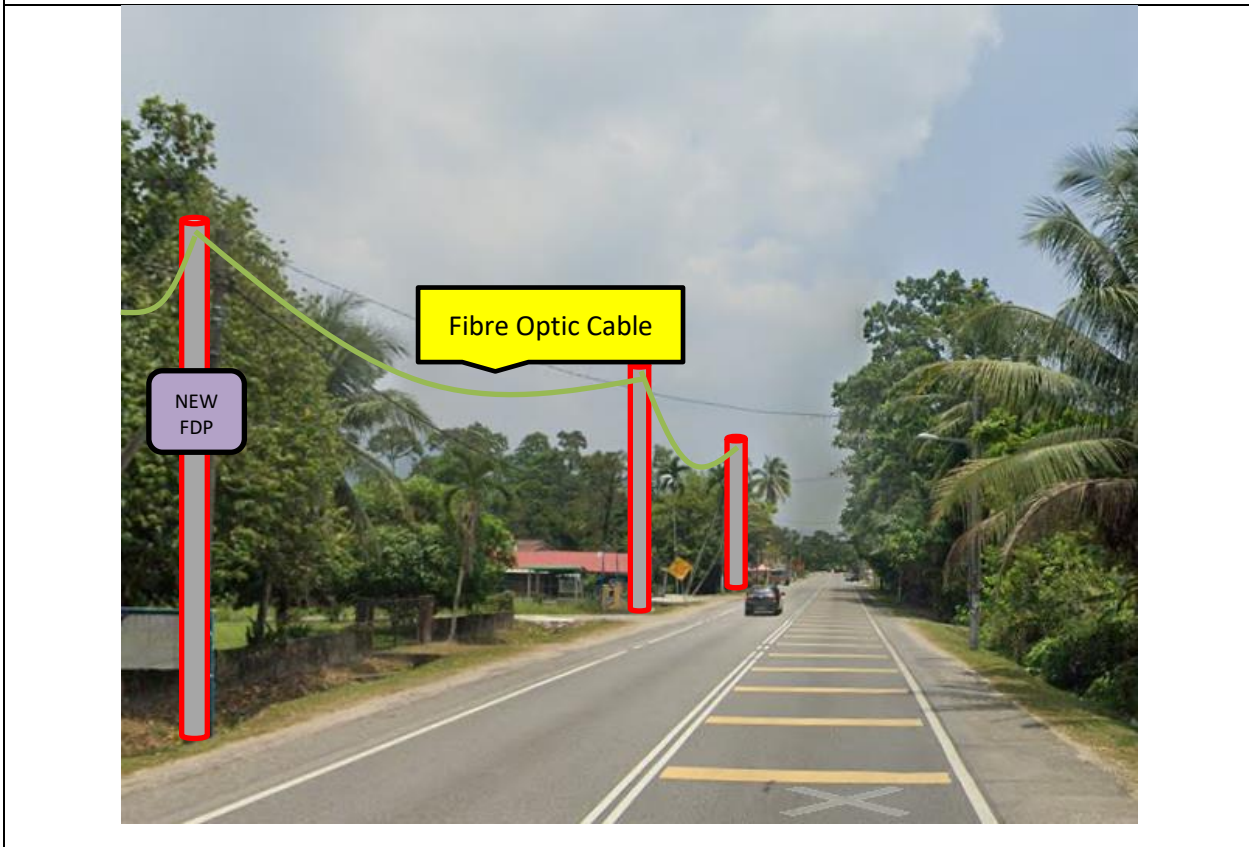
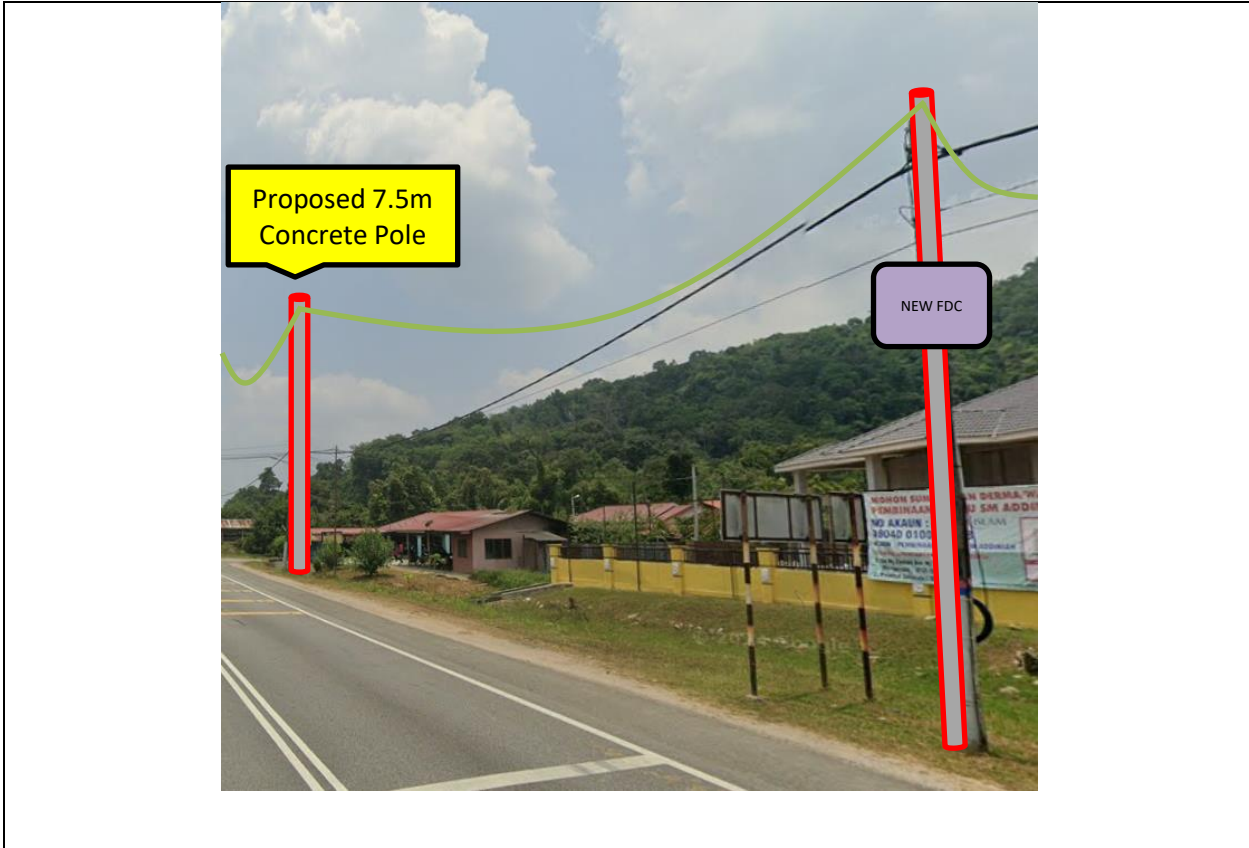
**Blue Colour – Majlis Authority**

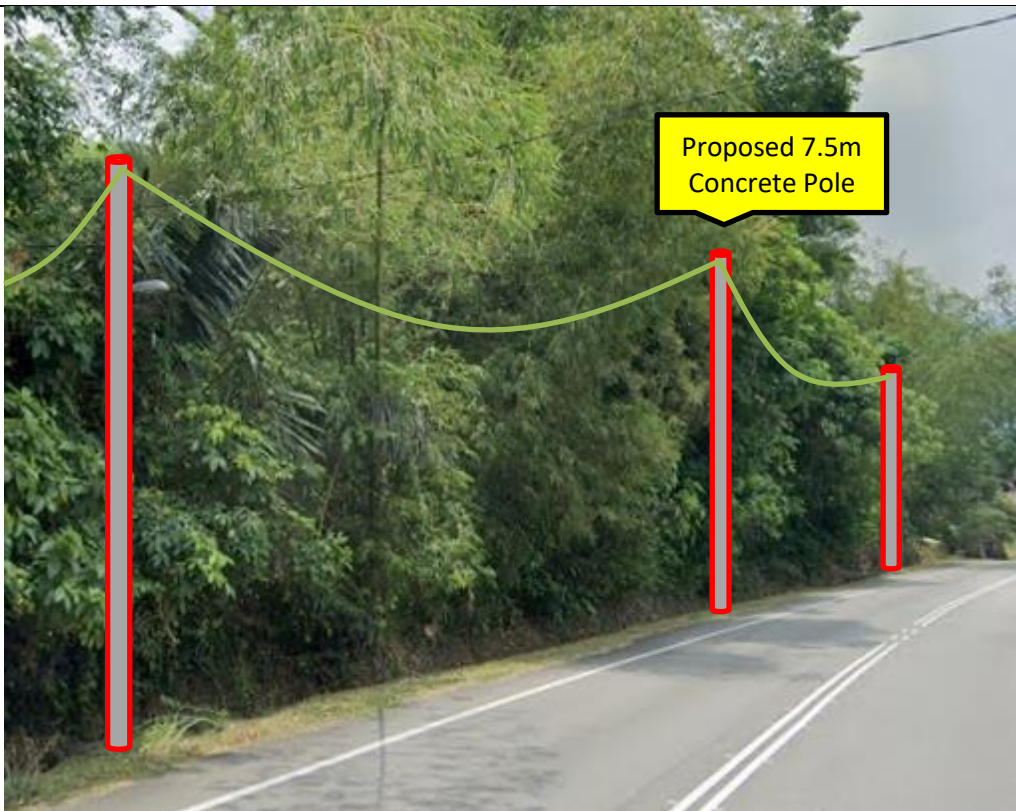
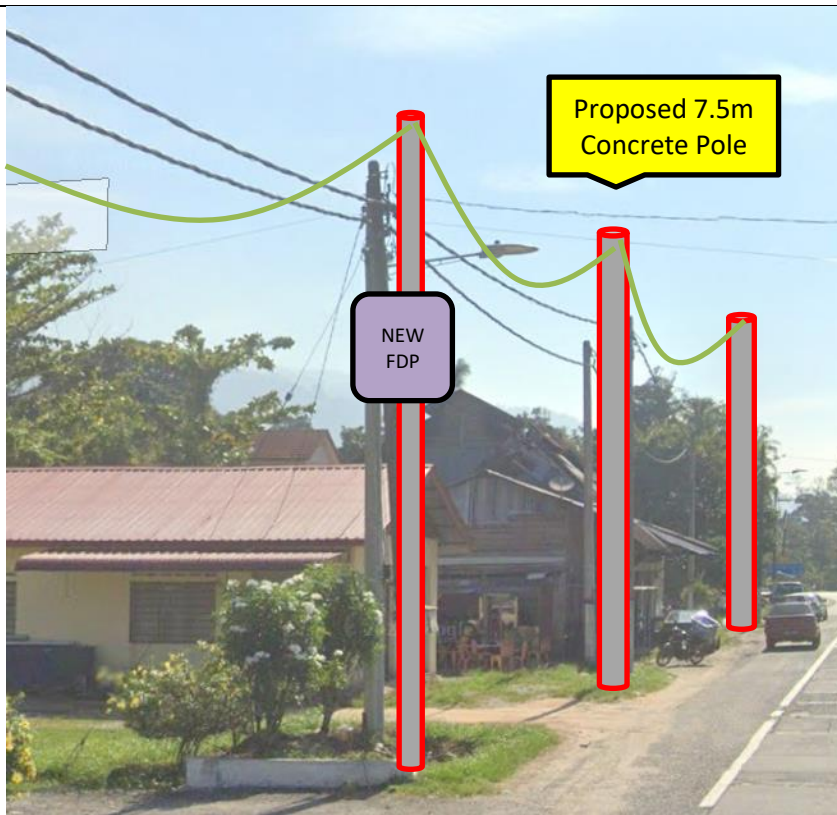
**Red Colour – JKR Authority**

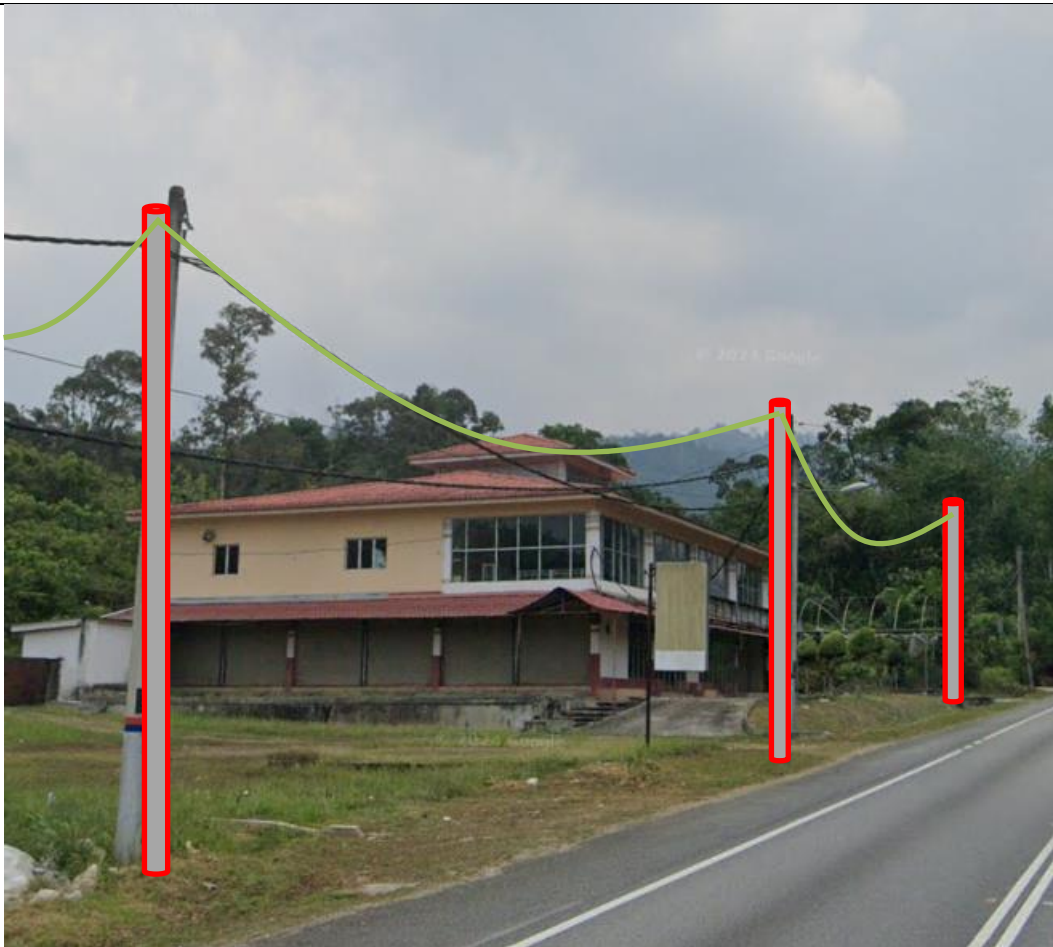
**Orange colour – Pejabat Daerah &**

**Tanah Authority**

### 5.0 Site Photo – Proposed New Pole







## 6.0 Site Plan – KMZ Routing (Prop new Pole)



## 7.0 Overall New Pole Proposed

Pro+A1:F45posed New Pole Coordinate					
No.	Pole ID	Distance (m)	Latitude	Longitude	Local Authority
1	FDC SMA ADDINIAH	0	4.780605176	100.7411706	JKR Daerah LMS Taiping
2	AFT6001 T001	22	4.780608552	100.7406278	JKR Daerah LMS Taiping
3	AFT6001 T002	40	4.78060983	100.7409912	JKR Daerah LMS Taiping
4	AFT6001 T003	43	4.780618363	100.7415947	JKR Daerah LMS Taiping
5	AFT6001 T004	32	4.780600989	100.741881	JKR Daerah LMS Taiping
6	AFT6001 T005	35	4.780919153	100.7418583	Pejabat Daerah dan Tanah Taiping
7	AFT6001 T006	37	4.781246489	100.7418314	Pejabat Daerah dan Tanah Taiping
8	AFT6001 T007	36	4.780609463	100.7422082	JKR Daerah LMS Taiping
9	AFT6001 T008	38	4.7805841	100.7425544	JKR Daerah LMS Taiping
10	AFT6001 T009	30	4.7805817	100.7428201	JKR Daerah LMS Taiping
11	AFT6001 T010	29	4.7805799	100.7430755	JKR Daerah LMS Taiping
12	AFT6001 T011	29	4.7805832	100.7433383	JKR Daerah LMS Taiping
13	AFT6001 T012	23	4.780570919	100.743548	JKR Daerah LMS Taiping
14	AFT6001 T013	19	4.780576652	100.7437139	JKR Daerah LMS Taiping
15	AFT6001 T014	30	4.7805881	100.7439841	JKR Daerah LMS Taiping
16	AFT6001 T015	31	4.780577805	100.7442627	JKR Daerah LMS Taiping
17	AFT6001 T016	42	4.7805524	100.7446427	JKR Daerah LMS Taiping
18	AFT6001 T017	30	4.780572924	100.7449125	JKR Daerah LMS Taiping
19	AFT6001 T018	15	4.780619355	100.7450445	JKR Daerah LMS Taiping
20	AFT6001 T019	50	4.780666474	100.7454899	JKR Daerah LMS Taiping
21	AFT6001 T020	47	4.780830921	100.7458823	JKR Daerah LMS Taiping
22	AFT6001 T021	31	4.781045689	100.7457139	Pejabat Daerah dan Tanah Taiping
23	AFT6001 T022	35	4.781362759	100.7457668	Pejabat Daerah dan Tanah Taiping
24	AFT6001 T023	31	4.781414546	100.7460414	Pejabat Daerah dan Tanah Taiping
25	AFT6001 T024	31	4.781677567	100.7461256	Pejabat Daerah dan Tanah Taiping
26	AFT6001 T025	23	4.7818693	100.7460507	Pejabat Daerah dan Tanah Taiping
27	AFT6001 T026	35	4.7821608	100.7459206	Pejabat Daerah dan Tanah Taiping
28	AFT6001 T027	41	4.782515769	100.7458148	Pejabat Daerah dan Tanah Taiping
29	AFT6001 T028	40	4.7828686	100.7458838	Pejabat Daerah dan Tanah Taiping
30	AFT6001 T029	39	4.7831801	100.7460562	Pejabat Daerah dan Tanah Taiping
31	AFT6001 T030	41	4.783460573	100.7458184	Pejabat Daerah dan Tanah Taiping
32	AFT6001 T031	23	4.783604629	100.7456656	Pejabat Daerah dan Tanah Taiping
33	AFT6001 T032	24	4.783644054	100.7454503	Pejabat Daerah dan Tanah Taiping
34	AFT6001 T033	29	4.783595608	100.7451881	Pejabat Daerah dan Tanah Taiping
35	AFT6001 T034	20	4.780893335	100.7460488	JKR Daerah LMS Taiping
36	AFT6001 T035	41	4.781047694	100.7463801	JKR Daerah LMS Taiping
37	AFT6001 T036	38	4.781178999	100.7466976	JKR Daerah LMS Taiping
38	AFT6001 T037	35	4.781328346	100.7469755	JKR Daerah LMS Taiping
39	AFT6001 T038	35	4.781449627	100.7472655	JKR Daerah LMS Taiping
40	AFT6001 T039	32	4.781589953	100.7475233	JKR Daerah LMS Taiping
41	AFT6001 T040	37	4.781722594	100.7478227	JKR Daerah LMS Taiping
42	AFT6001 T041	32	4.781843	100.7480867	JKR Daerah LMS Taiping
43	AFT6001 T042	34	4.7820019	100.7483555	JKR Daerah LMS Taiping

No.	Pole ID	Distance (m)	Latitude	Longitude	Local Authority
44	AFT6001 T043	35	4.782172682	100.7486194	JKR Daerah LMS Taiping
45	AFT6001 T044	37	4.782385977	100.7488759	JKR Daerah LMS Taiping
46	AFT6001 T045	36	4.7825609	100.7491498	JKR Daerah LMS Taiping
47	AFT6001 T046	29	4.7827226	100.7493572	JKR Daerah LMS Taiping
48	AFT6001 T047	39	4.7829216	100.7496455	JKR Daerah LMS Taiping
49	AFT6001 T048	33	4.783087865	100.7498929	JKR Daerah LMS Taiping
50	AFT6001 T049	48	4.783192339	100.750159	JKR Daerah LMS Taiping
51	AFT6001 T050	48	4.783355718	100.7504972	JKR Daerah LMS Taiping
52	AFT6001 T051	40	4.7834309	100.7507767	JKR Daerah LMS Taiping
53	AFT6001 T052	44	4.7835096	100.7510549	JKR Daerah LMS Taiping
54	AFT6001 T053	51	4.783623	100.7514088	JKR Daerah LMS Taiping
55	AFT6001 T054	41	4.7837744	100.7518892	JKR Daerah LMS Taiping
56	AFT6001 T055	37	4.7839224	100.7523762	JKR Daerah LMS Taiping
57	AFT6001 T056	43	4.784097773	100.7529096	JKR Daerah LMS Taiping
58	AFT6001 T057	48	4.784204687	100.7532717	JKR Daerah LMS Taiping
59	AFT6001 T058	33	4.7843343	100.7537013	JKR Daerah LMS Taiping
60	AFT6001 T059	34	4.784410498	100.7540197	JKR Daerah LMS Taiping
61	AFT6001 T060	35	4.784475983	100.7542996	JKR Daerah LMS Taiping
62	AFT6001 T061	32	4.784516744	100.7545182	JKR Daerah LMS Taiping
63	AFT6001 T062	28	4.78454426	100.7547417	JKR Daerah LMS Taiping
64	AFT6001 T063	45	4.784944991	100.7547571	Pejabat Daerah dan Tanah Taiping
65	AFT6001 T064	35	4.7852623	100.7547407	Pejabat Daerah dan Tanah Taiping
66	AFT6001 T065	50	4.78569682	100.7546309	Pejabat Daerah dan Tanah Taiping
67	AFT6001 T066	26	4.78455951	100.7549742	JKR Daerah LMS Taiping
68	AFT6001 T067	28	4.784627	100.755176	JKR Daerah LMS Taiping
69	AFT6001 T068	35	4.784560846	100.7555314	JKR Daerah LMS Taiping
70	AFT6001 T069	47	4.784424864	100.7559361	JKR Daerah LMS Taiping
71	AFT6001 T070	22	4.78460428	100.755984	Majlis Perbandaran Taiping
72	AFT6001 T071	22	4.784665422	100.7557933	Majlis Perbandaran Taiping
73	AFT6001 T072	38	4.785004	100.7558048	Majlis Perbandaran Taiping
74	AFT6001 T073	29	4.785268152	100.7557936	Majlis Perbandaran Taiping
75	AFT6001 T074	25	4.78526147	100.7555616	Majlis Perbandaran Taiping
76	AFT6001 T075	17	4.785413823	100.7555619	Majlis Perbandaran Taiping
77	AFT6001 T076	16	4.785563837	100.755569	Majlis Perbandaran Taiping
78	AFT6001 T077	38	4.785637007	100.7559032	Majlis Perbandaran Taiping
79	AFT6001 T078	30	4.7856754	100.7561238	Majlis Perbandaran Taiping
80	AFT6001 T079	34	4.78569	100.7562853	Majlis Perbandaran Taiping
81	AFT6001 T080	31	4.785724543	100.7565624	Majlis Perbandaran Taiping
82	AFT6001 T081	21	4.784813098	100.7559974	Majlis Perbandaran Taiping
83	AFT6001 T082	29	4.785090741	100.7560182	Majlis Perbandaran Taiping
84	AFT6001 T083	31	4.785118806	100.7561527	Majlis Perbandaran Taiping
85	AFT6001 T084	41	4.785148542	100.7564162	Majlis Perbandaran Taiping
86	AFT6001 T085	33	4.785163911	100.7567713	Majlis Perbandaran Taiping



PROJEK PENYEDIAAN DAN PENYELENGGARAAN POINT OF PRESENCE (POP) FASA 2: HAB INFRASTRUKTUR GENTIAN OPTIK BERHAMPIRAN DENGAN SEKOLAH, KAWASAN PERINDUSTRIAN, PREMIS KERAJAAN DAN KOMUNITI SEKITARNYA OLEH KEMENTERIAN KOMUNIKASI MALAYSIA - ZON UTARA (KKMM.400-11/17/132(1))



No.	Pole ID	Distance (m)	Latitude	Longitude	Local Authority
87	AFT6001 T086	36	4.785402797	100.7567575	Majlis Perbandaran Taiping
88	AFT6001 T087	36	4.785446565	100.7570204	Majlis Perbandaran Taiping
89	AFT6001 T088	29	4.785730891	100.7569761	Majlis Perbandaran Taiping
90	AFT6001 T089	26	4.786022232	100.7569138	Majlis Perbandaran Taiping
91	AFT6001 T090	38	4.786298205	100.7568558	Majlis Perbandaran Taiping
92	AFT6001 T091	33	4.786264036	100.7564886	Majlis Perbandaran Taiping
93	AFT6001 T092	38	4.78626446	100.7561896	Majlis Perbandaran Taiping
94	AFT6001 T093	33	4.78621568	100.7558724	Majlis Perbandaran Taiping
95	AFT6001 T094	25	4.784364725	100.7560846	Majlis Perbandaran Taiping
96	AFT6001 T095	23	4.78431795	100.7562301	JKR Daerah LMS Taiping
97	AFT6001 T096	33	4.784223731	100.7564997	JKR Daerah LMS Taiping
98	AFT6001 T097	34	4.784105112	100.7567636	JKR Daerah LMS Taiping
99	AFT6001 T098	28	4.7839956	100.7570345	JKR Daerah LMS Taiping
100	AFT6001 T099	37	4.783892964	100.7573151	JKR Daerah LMS Taiping
101	AFT6001 T100	35	4.783808769	100.7575944	JKR Daerah LMS Taiping
102	AFT6001 T101	38	4.7837239	100.7578982	JKR Daerah LMS Taiping
103	AFT6001 T102	34	4.7836545	100.7582779	JKR Daerah LMS Taiping
104	AFT6001 T103	32	4.7836476	100.7585412	JKR Daerah LMS Taiping
105	AFT6001 T104	34	4.7836409	100.7587653	JKR Daerah LMS Taiping
106	AFT6001 T105	31	4.7836091	100.7590682	JKR Daerah LMS Taiping
107	AFT6001 T106	43	4.783620666	100.7593925	JKR Daerah LMS Taiping
108	AFT6001 T107	41	4.7835999	100.7597628	JKR Daerah LMS Taiping
109	AFT6001 T108	35	4.78358926	100.7600768	JKR Daerah LMS Taiping