

## POP2 D/Side ABD3070 SJKT Arumugam Pillai – Technical Proposal

Company Name	: A&A Megah Sdn Bhd
Company Address	: Lot A1, Tingkat Atas, Medan Niaga PKNP, Jalan Kempadang Perdana 1, 25150 Kuantan, Pahang
Prepared By	: Nurliyana Binti Noruldin
Date	: 09/08/2024



POINT A



POINT B

### Starting Point

Site / Boundary Name	: Sekolah Jenis Kebangsaan Tamil Arumugam Pillai
Address	: Jalan Selama
District	: Bagan Serai
Postcode	: 34300
State	: Perak
GPS Coordinate	: 5.081827, 100.600996
LRD	: A

### End Point

Site / Boundary Name	: Sekolah Jenis Kebangsaan Tamil Arumugam Pillai
Address	: Jalan Selama
District	: Bagan Serai
Postcode	: 34300
State	: Perak
GPS Coordinate	: 5.0674, 100.6077
LRD	: B

### Work Summary

No	Proposed Distance and Method	Unit	Qty
1	Horizontal Directional Drilling (HDD)	m	<b>73</b>
2	Carriage Way Open trench (CW)	m	<b>0</b>
3	Grass Verge Open Trenching (GV)	m	<b>0</b>
4	Micro trenching (MT)	m	<b>0</b>
	Total		<b>0</b>

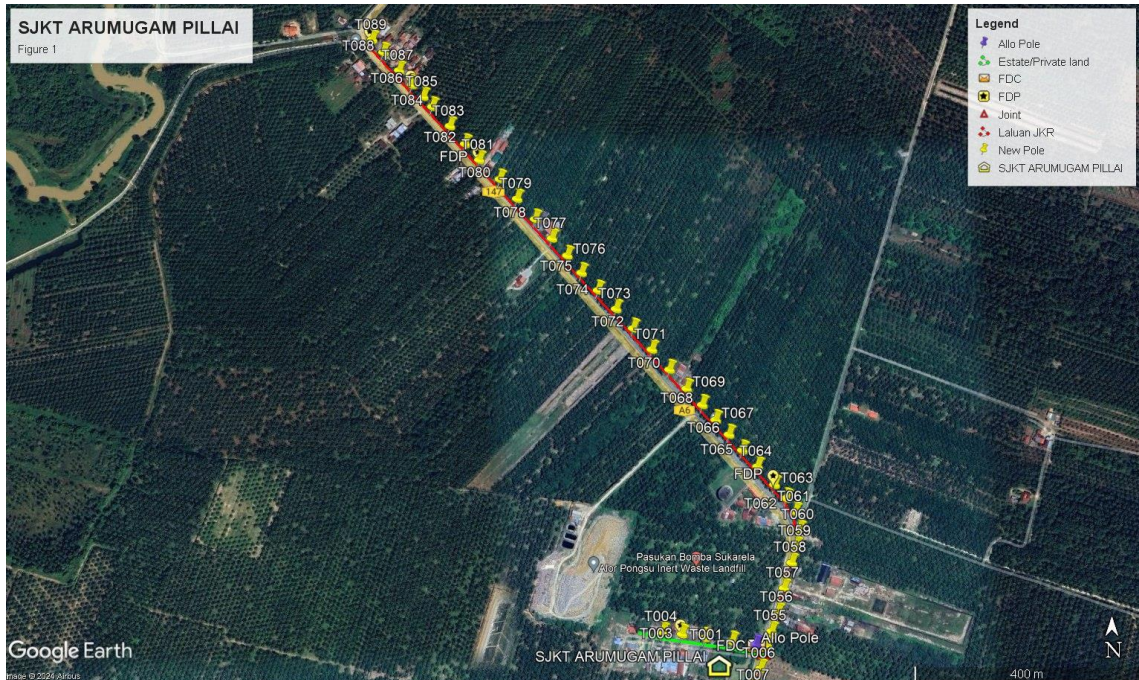
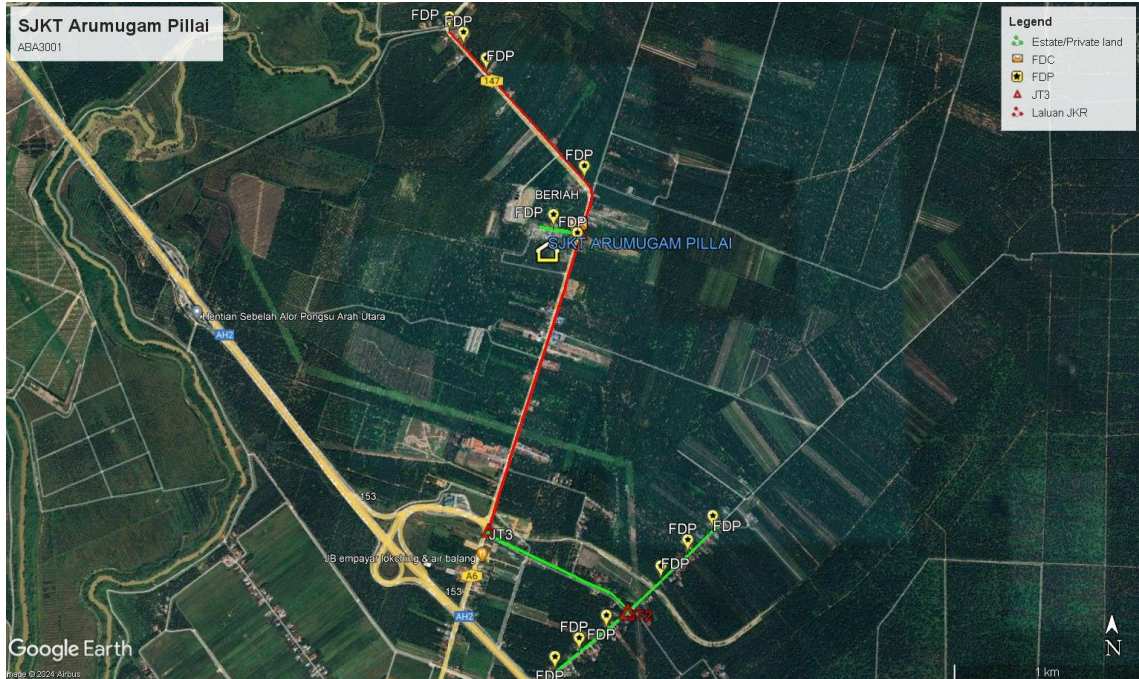
	Other Information	Unit	Qty
1	Proposed Manhole	EA	<b>0</b>
2	Proposed Pole	EA	<b>145</b>
3	Joint Closure	EA	<b>3</b>
4	Estimated time required for completion	days	<b>30</b>

### Local Authority Summary

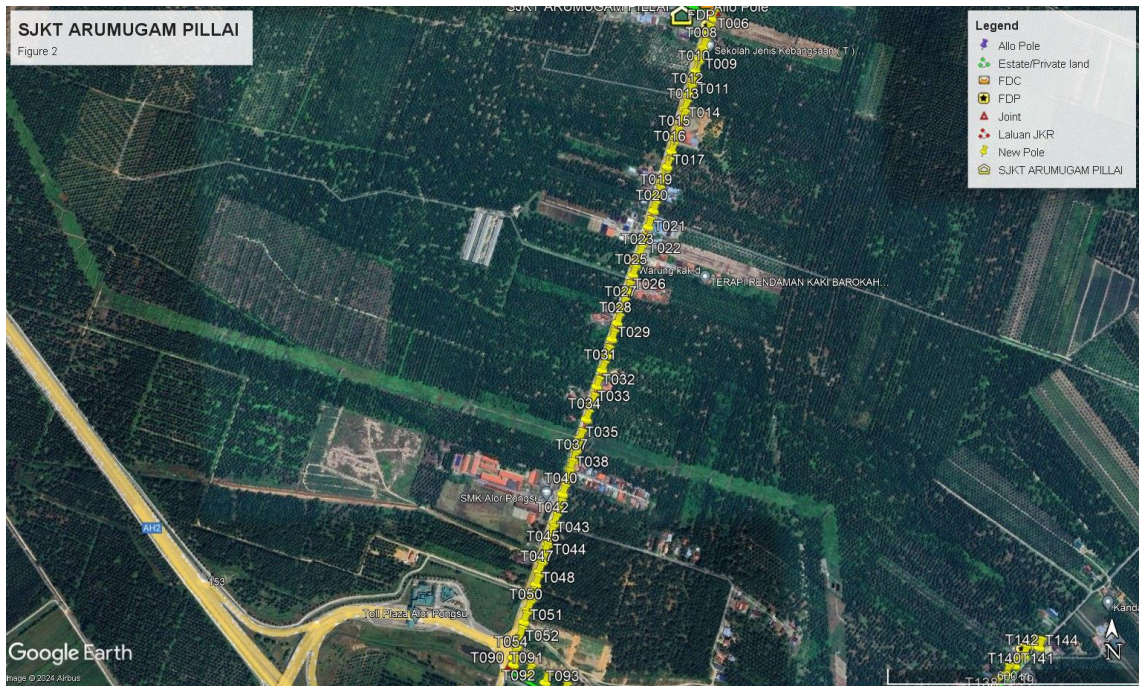
1. Daerah Bagan Serai

Bil	Items	Owner	Quantity	Distance
1	HDD	JKR	-	-
		Majlis	-	-
		Estate / Private Land	-	-
2	New Pole	JKR	81pc	2,835m
		Majlis	-	-
		Estate / Private Land	64pc	2240m
3	Existing TNB Pole	JKR	-	-
		Majlis	-	-
		Estate / Private Land	-	-
Total				5,075m

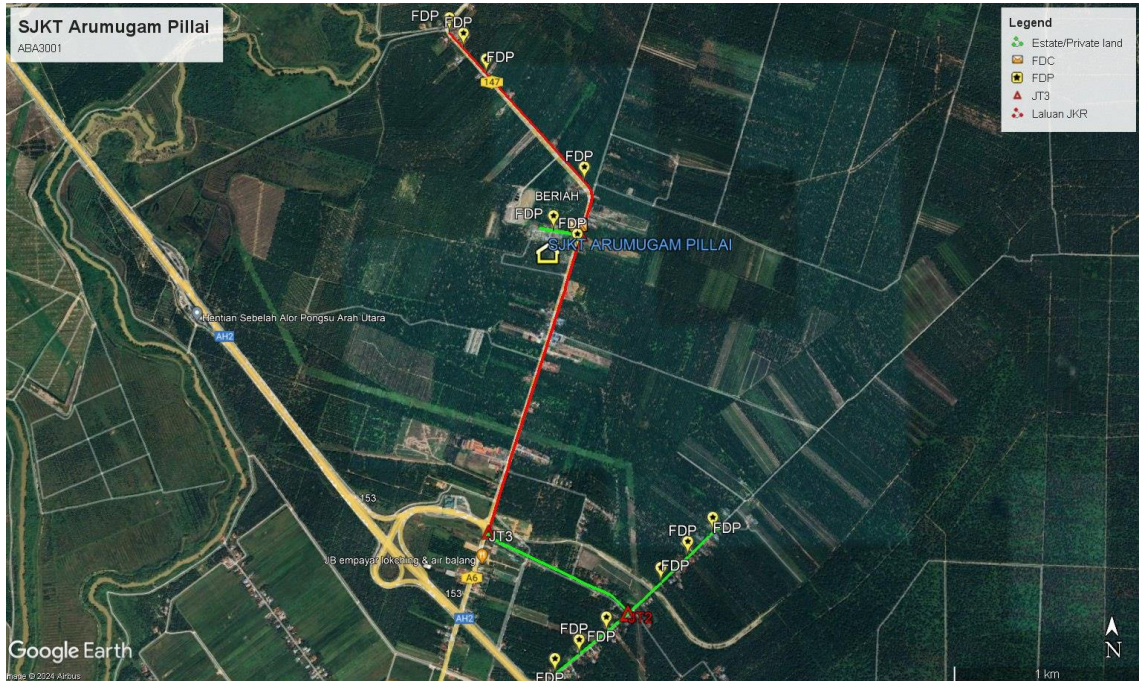
**Site Plan – KMZ (Overview site area)**



ROJEK PENYEDIAAN DAN PENYELENGGARAAN POINT OF PRESENCE (POP) FASA 2: HAB INFRASTRUKTUR GENTIAN OPTIK BERHAMPIRAN DENGAN SEKOLAH, KAWASAN PERINDUSTRIAN, PREMIS KERAJAAN DAN KOMUNITI SEKITARNYA OLEH KEMENTERIAN KOMUNIKASI MALAYSIA - ZON UTARA (KKMM.400-11/17/132(1))



**Site Plan – KMZ Routing (All Local Authority)**

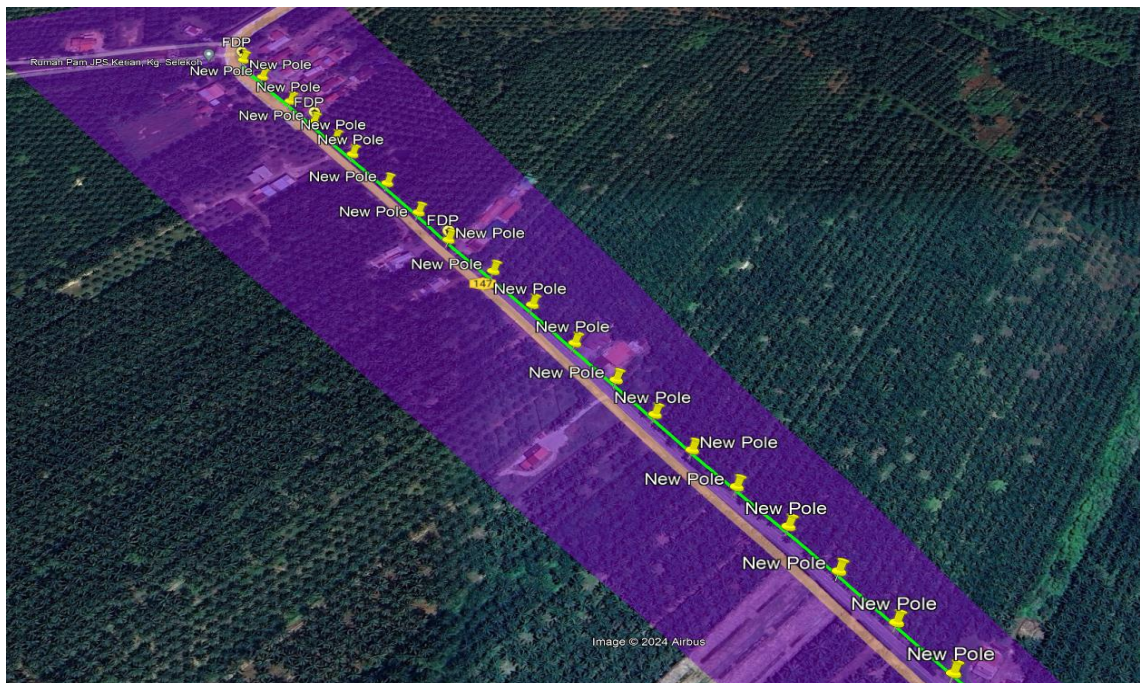
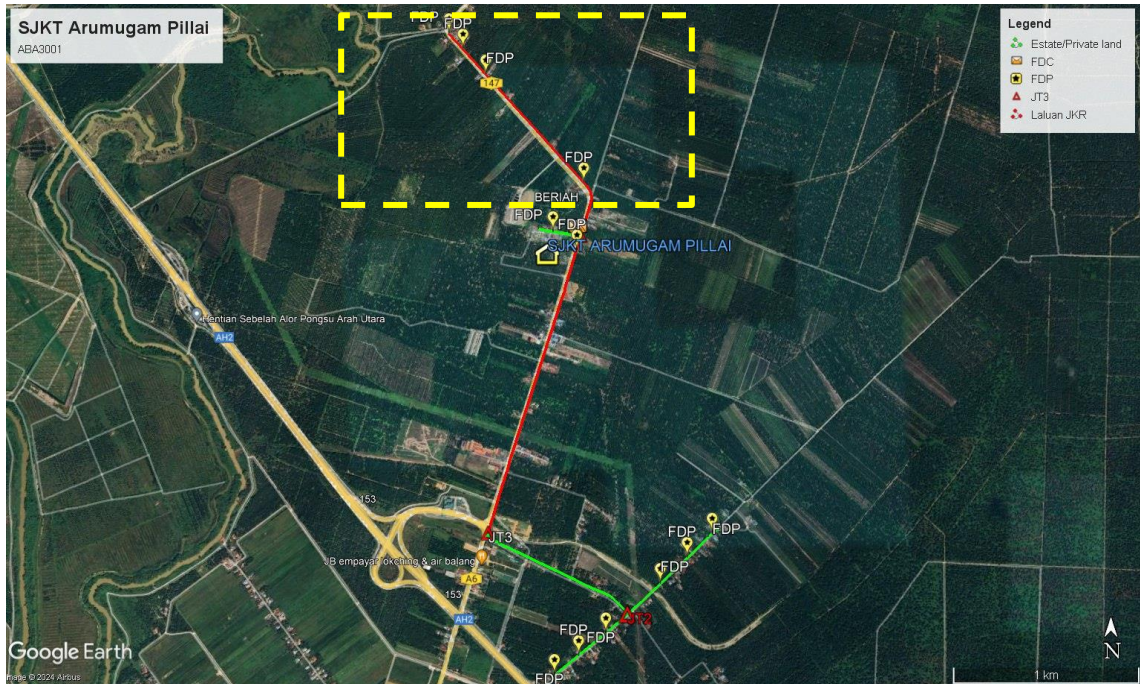


**Green Colour – Estate/Private Land**

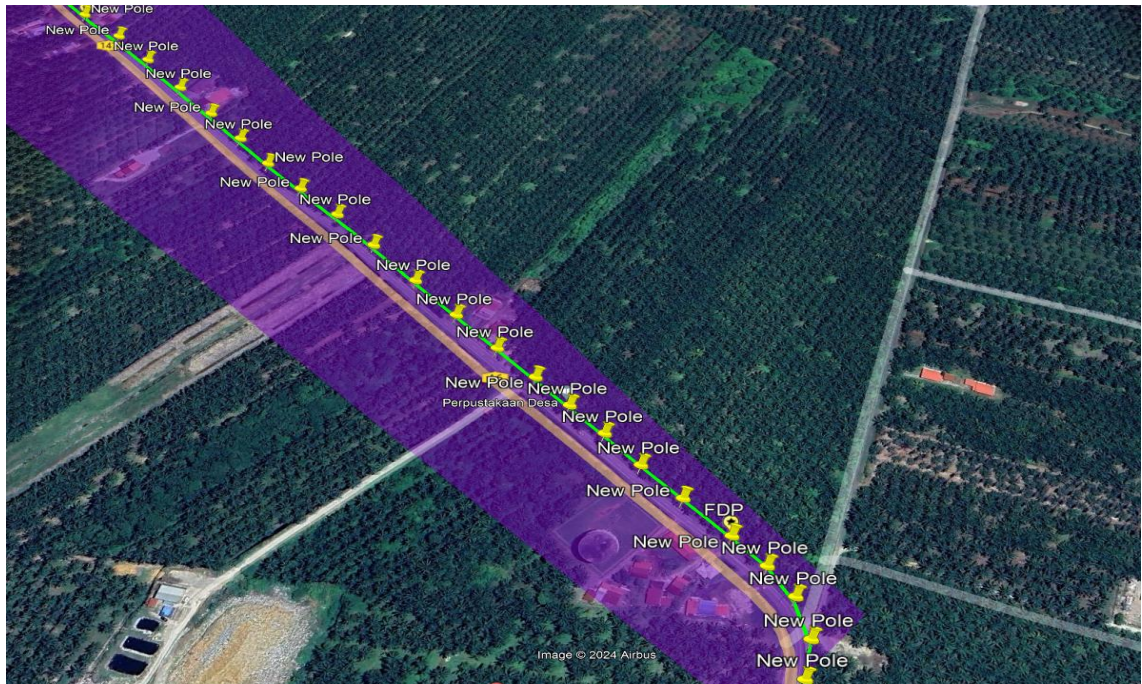
**Land Red Colour – JKR Kerian**

**Site Plan – KMZ Routing (All site area)**

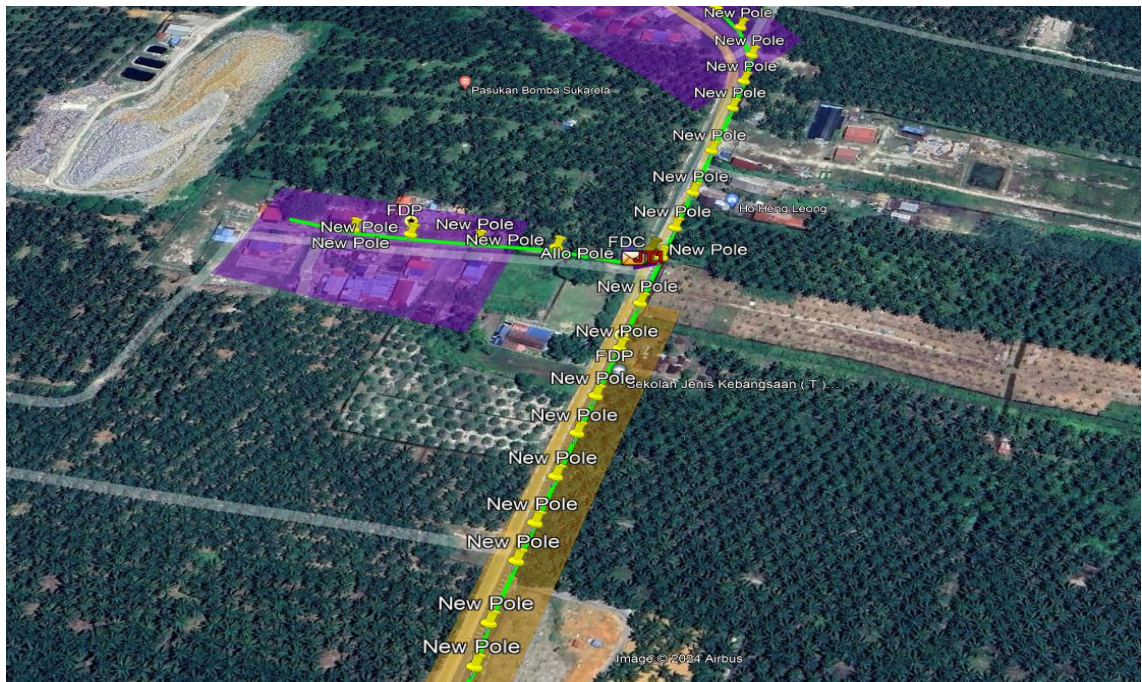
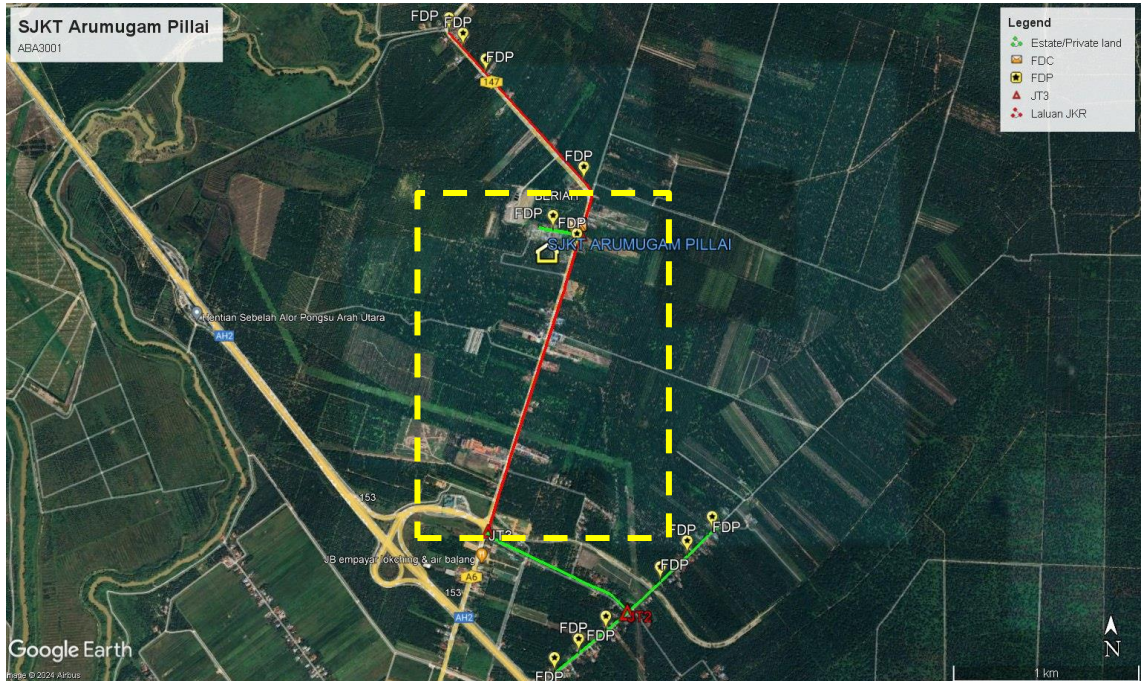
**Route 1**



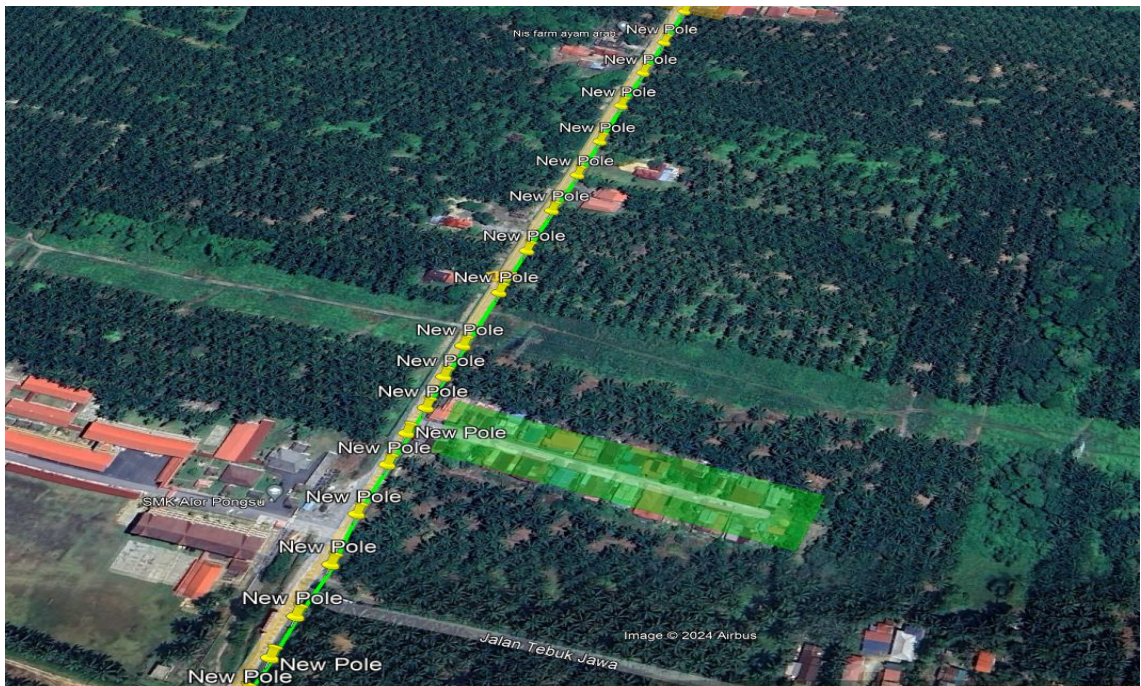
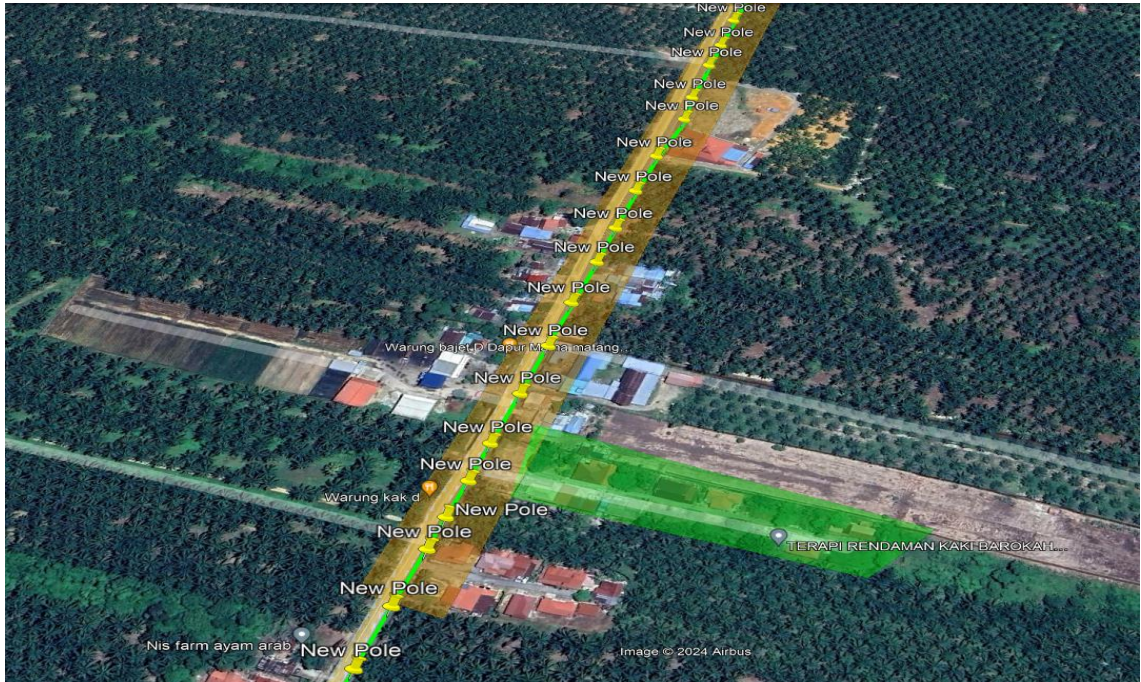
ROJEK PENYEDIAAN DAN PENYELENGGARAAN POINT OF PRESENCE (POP) FASA 2: HAB INFRASTRUKTUR GENTIAN OPTIK BERHAMPIRAN DENGAN SEKOLAH, KAWASAN PERINDUSTRIAN, PREMIS KERAJAAN DAN KOMUNITI SEKITARNYA OLEH KEMENTERIAN KOMUNIKASI MALAYSIA - ZON UTARA (KKMM.400-11/17/132(1))



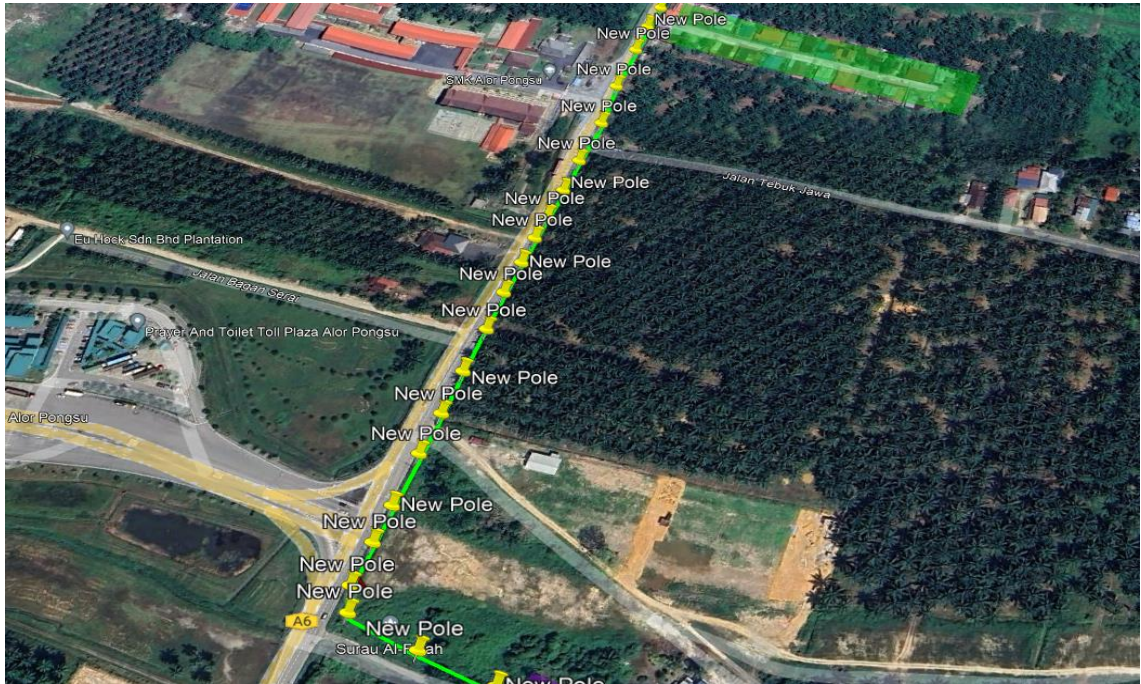
**Route 2**



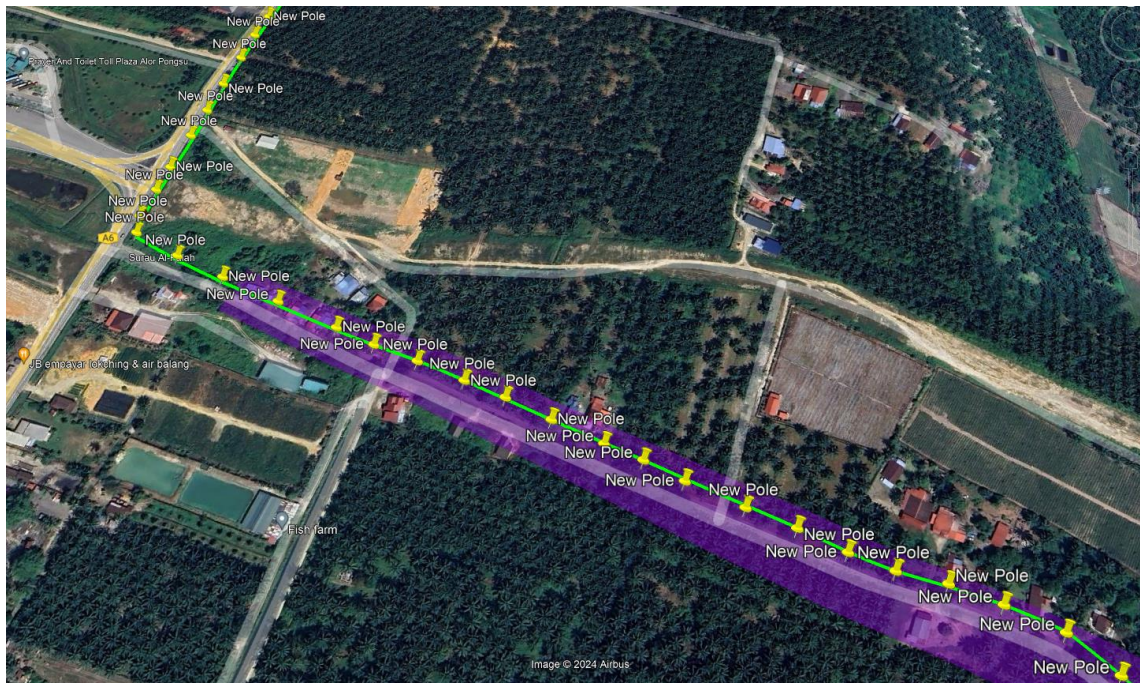
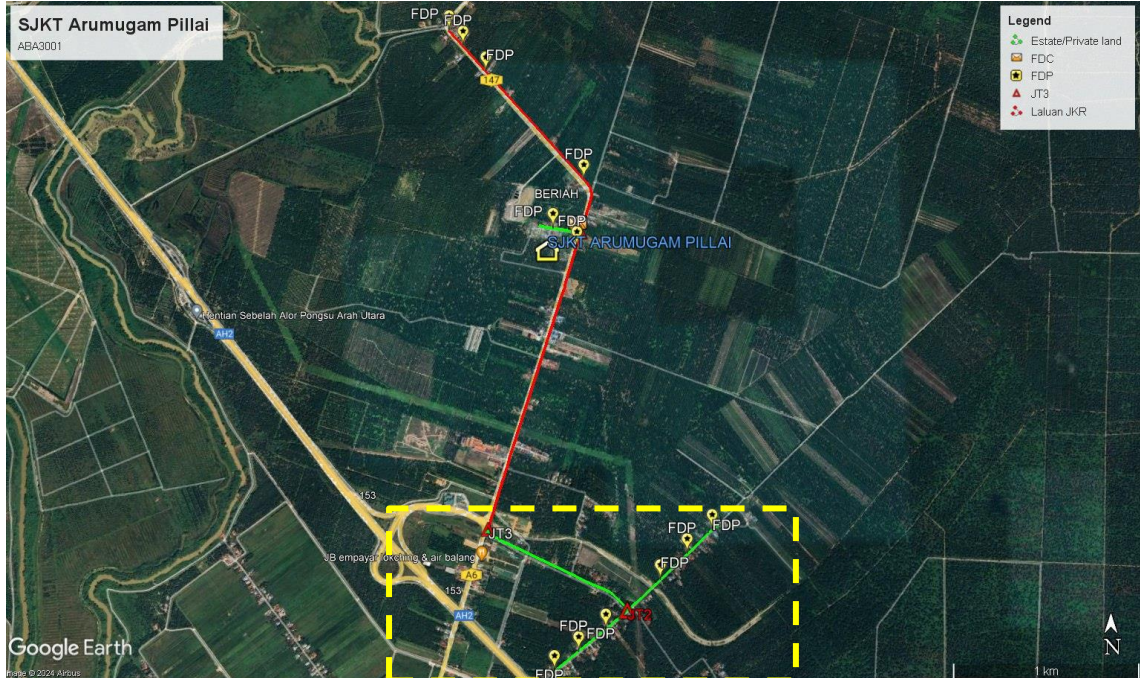
ROJEK PENYEDIAAN DAN PENYELENGGARAAN POINT OF PRESENCE (POP) FASA 2: HAB INFRASTRUKTUR GENTIAN OPTIK BERHAMPIRAN DENGAN SEKOLAH, KAWASAN PERINDUSTRIAN, PREMIS KERAJAAN DAN KOMUNITI SEKITARNYA OLEH KEMENTERIAN KOMUNIKASI MALAYSIA - ZON UTARA (KKMM.400-11/17/132(1))



ROJEK PENYEDIAAN DAN PENYELENGGARAAN POINT OF PRESENCE (POP) FASA 2: HAB INFRASTRUKTUR GENTIAN OPTIK BERHAMPIRAN DENGAN SEKOLAH, KAWASAN PERINDUSTRIAN, PREMIS KERAJAAN DAN KOMUNITI SEKITARNYA OLEH KEMENTERIAN KOMUNIKASI MALAYSIA - ZON UTARA (KKMM.400-11/17/132(1))



**Route 3**



ROJEK PENYEDIAAN DAN PENYELENGGARAAN POINT OF PRESENCE (POP) FASA 2: HAB INFRASTRUKTUR GENTIAN OPTIK BERHAMPIRAN DENGAN SEKOLAH, KAWASAN PERINDUSTRIAN, PREMIS KERAJAAN DAN KOMUNITI SEKITARNYA OLEH KEMENTERIAN KOMUNIKASI MALAYSIA - ZON UTARA (KKMM.400-11/17/132(1))



**Prop New Pole Lat & Long Table**

PROPOSED POLE COORDINATE		
POLE NUMBER	LATITUDE	LONGITUDE
T001	5.082029°	100.599499°
T002	5.081993°	100.599815°
T003	5.081937°	100.600184°
T004	5.081882°	100.600617°
Existing Pole	5.081827°	100.600996°
T005	5.081808°	100.601185°
T006	5.081447°	100.601076°
T007	5.081103°	100.600976°
T008	5.080751°	100.600867°
T009	5.080489°	100.600785°
T010	5.080209°	100.600694°
T011	5.079920°	100.600612°
T012	5.079694°	100.600539°
T013	5.079341°	100.600439°
T014	5.079106°	100.600394°
T015	5.078718°	100.600239°
T016	5.078365°	100.600130°
T017	5.078022°	100.600030°
T018	5.077733°	100.599939°
T019	5.077390°	100.599821°
T020	5.077037°	100.599721°
T021	5.076676°	100.599603°
T022	5.076314°	100.599485°
T023	5.076052°	100.599403°
T024	5.075808°	100.599321°
T025	5.075600°	100.599258°
T026	5.075248°	100.599140°
T027	5.074887°	100.599021°
T028	5.074534°	100.598903°
T029	5.074182°	100.598785°
T030	5.073829°	100.598676°
T031	5.073495°	100.598567°
T032	5.073143°	100.598449°
T033	5.072781°	100.598340°
T034	5.072429°	100.598222°
T035	5.072004°	100.598076°
T036	5.071769°	100.598004°
T037	5.071543°	100.597940°
T038	5.071363°	100.597867°
T039	5.071146°	100.597804°
T040	5.070820°	100.597704°
T041	5.070504°	100.597631°
T042	5.070197°	100.597522°

T043	5.069962°	100.597449°
T044	5.069754°	100.597377°
T045	5.069582°	100.597322°
T046	5.069393°	100.597267°
T047	5.069167°	100.597195°
T048	5.068905°	100.597131°
T049	5.068625°	100.597040°
T050	5.068363°	100.596958°
T051	5.068119°	100.596876°
T052	5.067811°	100.596786°
T053	5.067604°	100.596722°
T054	5.067369°	100.596649°
T055	5.082043°	100.601258°
T056	5.082341°	100.601358°
T057	5.082721°	100.601467°
T058	5.083128°	100.601594°
T059	5.083390°	100.601667°
T060	5.083652°	100.601722°
T061	5.083941°	100.601659°
T062	5.084159°	100.601515°
T063	5.084376°	100.601327°
T064	5.084666°	100.601057°
T065	5.084929°	100.600814°
T066	5.085183°	100.600598°
T067	5.085418°	100.600382°
T068	5.085663°	100.600166°
T069	5.085926°	100.599914°
T070	5.086234°	100.599636°
T071	5.086560°	100.599348°
T072	5.086905°	100.599042°
T073	5.087222°	100.598763°
T074	5.087530°	100.598466°
T075	5.087820°	100.598197°
T076	5.088101°	100.597963°
T077	5.088382°	100.597711°
T078	5.088699°	100.597432°
T079	5.089035°	100.597135°
T080	5.089361°	100.596848°
T081	5.089687°	100.596506°
T082	5.089950°	100.596272°
T083	5.090240°	100.596020°
T084	5.090566°	100.595723°
T085	5.090739°	100.595570°
T086	5.090938°	100.595381°
T087	5.091183°	100.595166°
T088	5.091491°	100.594896°
T089	5.091708°	100.594707°

T090	5.067224°	100.596658°
T091	5.067033°	100.596982°
T092	5.066851°	100.597333°
T093	5.066651°	100.597748°
T094	5.066442°	100.598171°
T095	5.066297°	100.598441°
T096	5.066152°	100.598747°
T097	5.066006°	100.599063°
T098	5.065888°	100.599333°
T099	5.065733°	100.599630°
T100	5.065570°	100.599964°
T101	5.065461°	100.600207°
T102	5.065324°	100.600459°
T103	5.065152°	100.600819°
T104	5.065015°	100.601116°
T105	5.064870°	100.601405°
T106	5.064752°	100.601666°
T107	5.064661°	100.601945°
T108	5.064533°	100.602234°
T109	5.064379°	100.602558°
T110	5.064152°	100.602828°
T111	5.063889°	100.603071°
T112	5.063653°	100.603305°
T113	5.063536°	100.603467°
T114	5.063400°	100.603295°
T115	5.063229°	100.603141°
T116	5.063030°	100.602915°
T117	5.062787°	100.602635°
T118	5.062598°	100.602400°
T119	5.062408°	100.602174°
T120	5.062255°	100.601957°
T121	5.062048°	100.601731°
T122	5.061904°	100.601524°
T123	5.061714°	100.601298°
T124	5.061525°	100.601072°
T125	5.061326°	100.600828°
T126	5.061083°	100.600530°
T127	5.060822°	100.600204°
T128	5.060587°	100.599897°
T129	5.063671°	100.603647°
T130	5.063824°	100.603819°
T131	5.064025°	100.604021°
T132	5.064203°	100.604244°
T133	5.064478°	100.604517°
T134	5.064744°	100.604804°
T135	5.064978°	100.605057°
T136	5.065258°	100.605347°



ROJEK PENYEDIAAN DAN PENYELENGGARAAN POINT OF PRESENCE (POP) FASA 2: HAB INFRASTRUKTUR GENTIAN OPTIK BERHAMPIRAN DENGAN SEKOLAH, KAWASAN PERINDUSTRIAN, PREMIS KERAJAAN DAN KOMUNITI SEKITARNYA OLEH KEMENTERIAN KOMUNIKASI MALAYSIA - ZON UTARA (KKMM.400-11/17/132(1))



T137	5.065484°	100.605573°
T138	5.065754°	100.605871°
T139	5.066016°	100.606151°
T140	5.066232°	100.606377°
T141	5.066512°	100.606684°
T142	5.066755°	100.606929°
T143	5.067026°	100.607182°
T144	5.067206°	100.607381°
T145	5.067405°	100.607579°

### Overall Pole (Propose New and Existing Pole)

No.	Pole & Manhole ID	Distance	Latitude	Longitude	Local Authority
1	T001	18	5.082029°	100.599499°	Private Land
2	T002	30	5.081993°	100.599815°	Private Land
3	T003	34	5.081937°	100.600184°	Private Land
4	T004	41	5.081882°	100.600617°	Private Land
5	Existing Pole	22	5.081827°	100.600996°	Private Land
6	T005	33	5.081808°	100.601185°	JKR Kerian
7	T006	50	5.081447°	100.601076°	JKR Kerian
8	T007	37	5.081103°	100.600976°	JKR Kerian
9	T008	33	5.080751°	100.600867°	JKR Kerian
10	T009	37	5.080489°	100.600785°	JKR Kerian
11	T010	37	5.080209°	100.600694°	JKR Kerian
12	T011	42	5.079920°	100.600612°	JKR Kerian
13	T012	33	5.079694°	100.600539°	JKR Kerian
14	T013	32	5.079341°	100.600439°	JKR Kerian
15	T014	30	5.079106°	100.600394°	JKR Kerian
16	T015	28	5.078718°	100.600239°	JKR Kerian
17	T016	28	5.078365°	100.600130°	JKR Kerian
18	T017	34	5.078022°	100.600030°	JKR Kerian
19	T018	42	5.077733°	100.599939°	JKR Kerian
20	T019	35	5.077390°	100.599821°	JKR Kerian
21	T020	47	5.077037°	100.599721°	JKR Kerian
22	T021	57	5.076676°	100.599603°	JKR Kerian
23	T022	50	5.076314°	100.599485°	JKR Kerian
24	T023	27	5.076052°	100.599403°	JKR Kerian
25	T024	26	5.075808°	100.599321°	JKR Kerian
26	T025	40	5.075600°	100.599258°	JKR Kerian
27	T026	31	5.075248°	100.599140°	JKR Kerian
28	T027	34	5.074887°	100.599021°	JKR Kerian
29	T028	46	5.074534°	100.598903°	JKR Kerian
30	T029	47	5.074182°	100.598785°	JKR Kerian
31	T030	44	5.073829°	100.598676°	JKR Kerian
32	T031	45	5.073495°	100.598567°	JKR Kerian
33	T032	28	5.073143°	100.598449°	JKR Kerian
34	T033	63	5.072781°	100.598340°	JKR Kerian
35	T034	32	5.072429°	100.598222°	JKR Kerian
36	T035	24	5.072004°	100.598076°	JKR Kerian
37	T036	28	5.071769°	100.598004°	JKR Kerian
38	T037	24	5.071543°	100.597940°	JKR Kerian
39	T038	30	5.071363°	100.597867°	JKR Kerian
40	T039	29	5.071146°	100.597804°	JKR Kerian
41	T040	27	5.070820°	100.597704°	JKR Kerian
42	T041	23	5.070504°	100.597631°	JKR Kerian
43	T042	27	5.070197°	100.597522°	JKR Kerian
44	T043	22	5.069962°	100.597449°	JKR Kerian
45	T044	25	5.069754°	100.597377°	JKR Kerian
46	T045	27	5.069582°	100.597322°	JKR Kerian
47	T046	32	5.069393°	100.597267°	JKR Kerian
48	T047	28	5.069167°	100.597195°	JKR Kerian
49	T048	31	5.068905°	100.597131°	JKR Kerian
50	T049	36	5.068625°	100.597040°	JKR Kerian
51	T050	25	5.068363°	100.596958°	JKR Kerian

52	T051	22	5.068119°	100.596876°	JKR Kerian
53	T052	20	5.067811°	100.596786°	JKR Kerian
54	T053	30	5.067604°	100.596722°	JKR Kerian
55	T054	12	5.067369°	100.596649°	JKR Kerian
56	T055	39	5.082043°	100.601258°	JKR Kerian
57	T056	43	5.082341°	100.601358°	JKR Kerian
58	T057	43	5.082721°	100.601467°	JKR Kerian
59	T058	41	5.083128°	100.601594°	JKR Kerian
60	T059	28	5.083390°	100.601667°	JKR Kerian
61	T060	26	5.083652°	100.601722°	JKR Kerian
62	T061	30	5.083941°	100.601659°	JKR Kerian
63	T062	33	5.084159°	100.601515°	JKR Kerian
64	T063	32	5.084376°	100.601327°	JKR Kerian
65	T064	38	5.084666°	100.601057°	JKR Kerian
66	T065	40	5.084929°	100.600814°	JKR Kerian
67	T066	45	5.085183°	100.600598°	JKR Kerian
68	T067	34	5.085418°	100.600382°	JKR Kerian
69	T068	29	5.085663°	100.600166°	JKR Kerian
70	T069	41	5.085926°	100.599914°	JKR Kerian
71	T070	50	5.086234°	100.599636°	JKR Kerian
72	T071	40	5.086560°	100.599348°	JKR Kerian
73	T072	46	5.086905°	100.599042°	JKR Kerian
74	T073	47	5.087222°	100.598763°	JKR Kerian
75	T074	44	5.087530°	100.598466°	JKR Kerian
76	T075	42	5.087820°	100.598197°	JKR Kerian
77	T076	43	5.088101°	100.597963°	JKR Kerian
78	T077	44	5.088382°	100.597711°	JKR Kerian
79	T078	47	5.088699°	100.597432°	JKR Kerian
80	T079	52	5.089035°	100.597135°	JKR Kerian
81	T080	51	5.089361°	100.596848°	JKR Kerian
82	T081	41	5.089687°	100.596506°	JKR Kerian
83	T082	43	5.089950°	100.596272°	JKR Kerian
84	T083	43	5.090240°	100.596020°	JKR Kerian
85	T084	48	5.090566°	100.595723°	JKR Kerian
86	T085	29	5.090739°	100.595570°	JKR Kerian
87	T086	34	5.090938°	100.595381°	JKR Kerian
88	T087	41	5.091183°	100.595166°	JKR Kerian
89	T088	46	5.091491°	100.594896°	JKR Kerian
90	T089	41	5.091708°	100.594707°	JKR KERIAN
91	T090	36	5.067224°	100.596658°	Private Land
92	T091	42	5.067033°	100.596982°	Private Land
93	T092	51	5.066851°	100.597333°	Private Land
94	T093	55	5.066651°	100.597748°	Private Land
95	T094	37	5.066442°	100.598171°	Private Land
96	T095	35	5.066297°	100.598441°	Private Land
97	T096	35	5.066152°	100.598747°	Private Land
98	T097	34	5.066006°	100.599063°	Private Land
99	T098	34	5.065888°	100.599333°	Private Land
100	T099	24	5.065733°	100.599630°	Private Land
101	T100	29	5.065570°	100.599964°	Private Land
102	T101	38	5.065461°	100.600207°	Private Land
103	T102	40	5.065324°	100.600459°	Private Land
104	T103	40	5.065152°	100.600819°	Private Land
105	T104	41	5.065015°	100.601116°	Private Land
106	T105	41	5.064870°	100.601405°	Private Land

ROJEK PENYEDIAAN DAN PENYELENGGARAAN POINT OF PRESENCE (POP) FASA 2: HAB INFRASTRUKTUR GENTIAN OPTIK BERHAMPIRAN DENGAN SEKOLAH, KAWASAN PERINDUSTRIAN, PREMIS KERAJAAN DAN KOMUNITI SEKITARNYA OLEH KEMENTERIAN KOMUNIKASI MALAYSIA - ZON UTARA (KKMM.400-11/17/132(1))

107	T106	40	5.064752°	100.601666°	Private Land
108	T107	40	5.064661°	100.601945°	Private Land
109	T108	40	5.064533°	100.602234°	Private Land
110	T109	39	5.064379°	100.602558°	Private Land
111	T110	38	5.064152°	100.602828°	Private Land
112	T111	40	5.063889°	100.603071°	Private Land
113	T112	23	5.063653°	100.603305°	Private Land
114	T113	32	5.063536°	100.603467°	Private Land
115	T114	24	5.063400°	100.603295°	Private Land
116	T115	28	5.063229°	100.603141°	Private Land
117	T116	33	5.063030°	100.602915°	Private Land
118	T117	38	5.062787°	100.602635°	Private Land
119	T118	28	5.062598°	100.602400°	Private Land
120	T119	26	5.062408°	100.602174°	Private Land
121	T120	35	5.062255°	100.601957°	Private Land
122	T121	29	5.062048°	100.601731°	Private Land
123	T122	30	5.061904°	100.601524°	Private Land
124	T123	34	5.061714°	100.601298°	Private Land
125	T124	42	5.061525°	100.601072°	Private Land
126	T125	41	5.061326°	100.600828°	Private Land
127	T126	42	5.061083°	100.600530°	Private Land
128	T127	49	5.060822°	100.600204°	Private Land
129	T128	17	5.060587°	100.599897°	Private Land
130	T129	22	5.063671°	100.603647°	Private Land
131	T130	26	5.063824°	100.603819°	Private Land
132	T131	33	5.064025°	100.604021°	Private Land
133	T132	47	5.064203°	100.604244°	Private Land
134	T133	50	5.064478°	100.604517°	Private Land
135	T134	44	5.064744°	100.604804°	Private Land
136	T135	38	5.064978°	100.605057°	Private Land
137	T136	33	5.065258°	100.605347°	Private Land
138	T137	45	5.065484°	100.605573°	Private Land
139	T138	42	5.065754°	100.605871°	Private Land
140	T139	38	5.066016°	100.606151°	Private Land
141	T140	42	5.066232°	100.606377°	Private Land
142	T141	35	5.066512°	100.606684°	Private Land
143	T142	35	5.066755°	100.606929°	Private Land
144	T143	36	5.067026°	100.607182°	Private Land
145	T144	26	5.067206°	100.607381°	Private Land
146	T145	30	5.067405°	100.607579°	Private Land

Site Photos – Proposed New Pole





ROJEK PENYEDIAAN DAN PENYELENGGARAAN POINT OF PRESENCE (POP) FASA 2: HAB INFRASTRUKTUR GENTIAN OPTIK BERHAMPIRAN DENGAN SEKOLAH, KAWASAN PERINDUSTRIAN, PREMIS KERAJAAN DAN KOMUNITI SEKITARNYA OLEH KEMENTERIAN KOMUNIKASI MALAYSIA - ZON UTARA (KKMM.400-11/17/132(1))



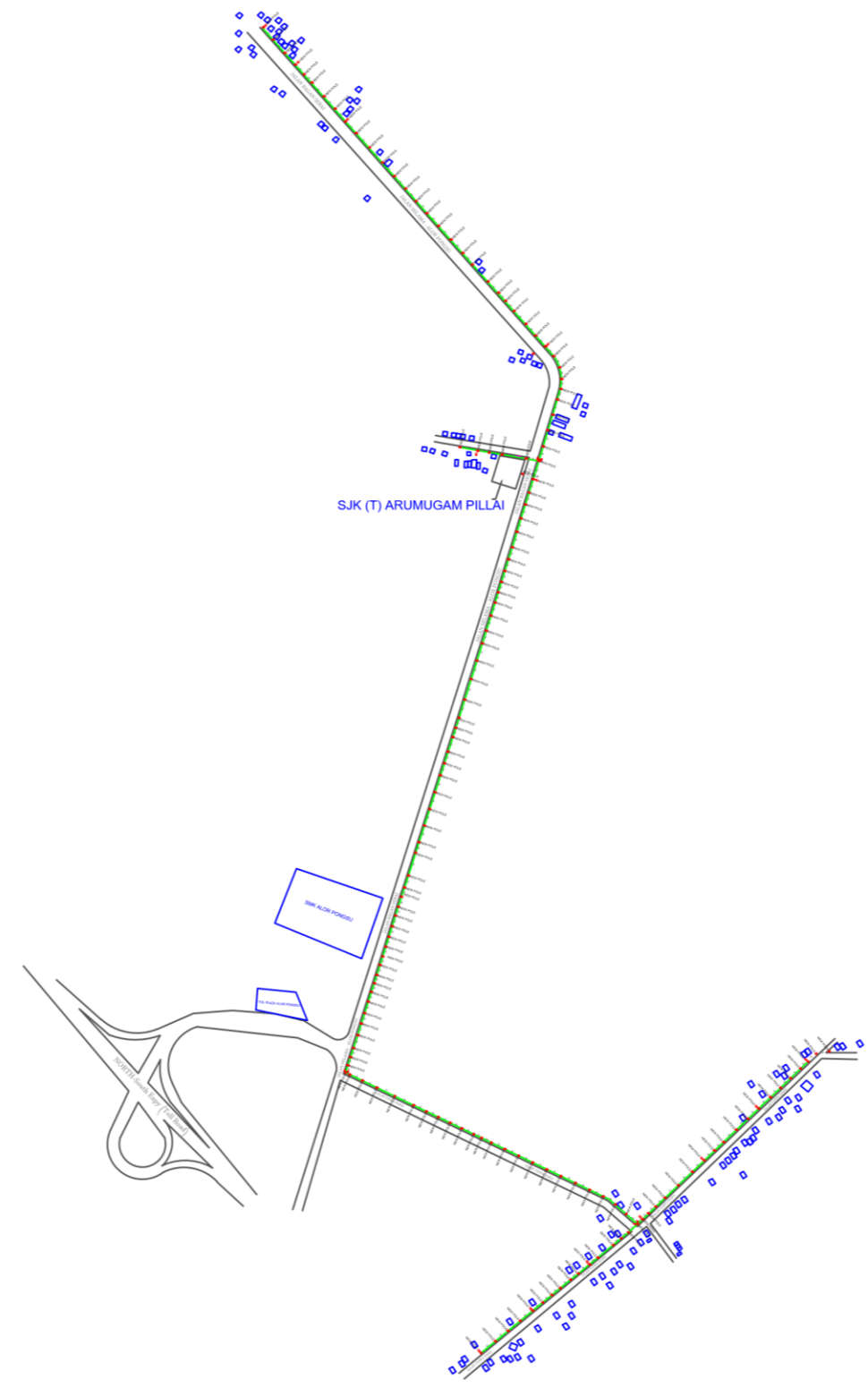
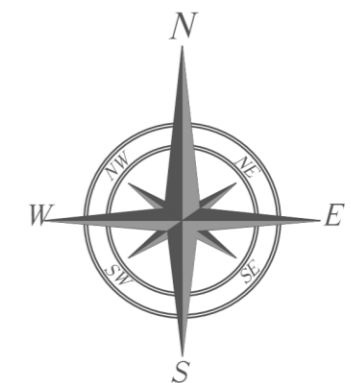


ROJEK PENYEDIAAN DAN PENYELENGGARAAN POINT OF PRESENCE (POP) FASA 2: HAB INFRASTRUKTUR GENTIAN OPTIK BERHAMPIRAN DENGAN SEKOLAH, KAWASAN PERINDUSTRIAN, PREMIS KERAJAAN DAN KOMUNITI SEKITARNYA OLEH KEMENTERIAN KOMUNIKASI MALAYSIA - ZON UTARA (KKMM.400-11/17/132(1))

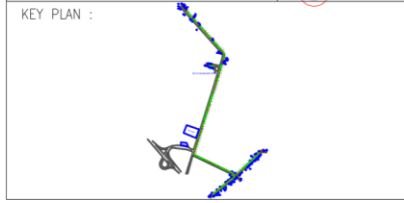


3rd Parties Dependencies

No.	Local Council/ Authority	Remark
1	Private Land/PLB	Pejabat Daerah dan Tanah Kerian
2	JKR	JKR Kerian



LEGEND										
12C FOC	Installed 1:8 splitter in FDC	Installed Pole (9m)	C7	New Manhole(JRC7)	TS/TB	Tension Small / Tension Big	MH1	MH NO.	(A) SEE A-A in this page	(A)
24C FOC	FDP with (1:8) splitter	Installed Riser	#	House Number	Existing Manhole	TKS-1	Existing TNB Pole NO.	(A) SEE SHEET XXX	(A)	
36C FOC	Closure	Suspension Big	Existing TNB Pole	CL01	Closure NO.	P001	New Pole NO.			
48C FOC	New Manhole (PIT)	Suspension Small	LOOP	DP1	FDP NO.		Pole Ring			
96C FOC	Installed Pole (7.5M)	FDC	FDP Boundary	C01	FDC NO.					



OWNER / DEVELOPER:

KEMENTERIAN KOMUNIKASI DAN DIGITAL

MAIN CONTRACTOR:

APEX COMMUNICATIONS SDN BHD

PRIVASAT

SUB-CONTRACTOR:

allo! The Smarter Connection

ALLO TECHNOLOGY SDN BHD

Level 3, Left Wing,  
College of Computer Science & Information Technology (CSIT)  
UNITEN, 43000 Kajang, Selangor  
TEL: 1 300-38-8000  
FAX: (60) 3 8800 5221  
E-MAIL : info@allo.my WEBSITE: HTTP://WWW.ALLO.MY

PROJECT TITLE:

SUPPLY, INSTALLATION AND COMMISSIONING OF FTTX NETWORK INFRASTRUCTURE - POP 2 PROJECT (D-SIDE) - PMU BSRI FOR ABD3070 SJKT ARUMUGAM PILLAI

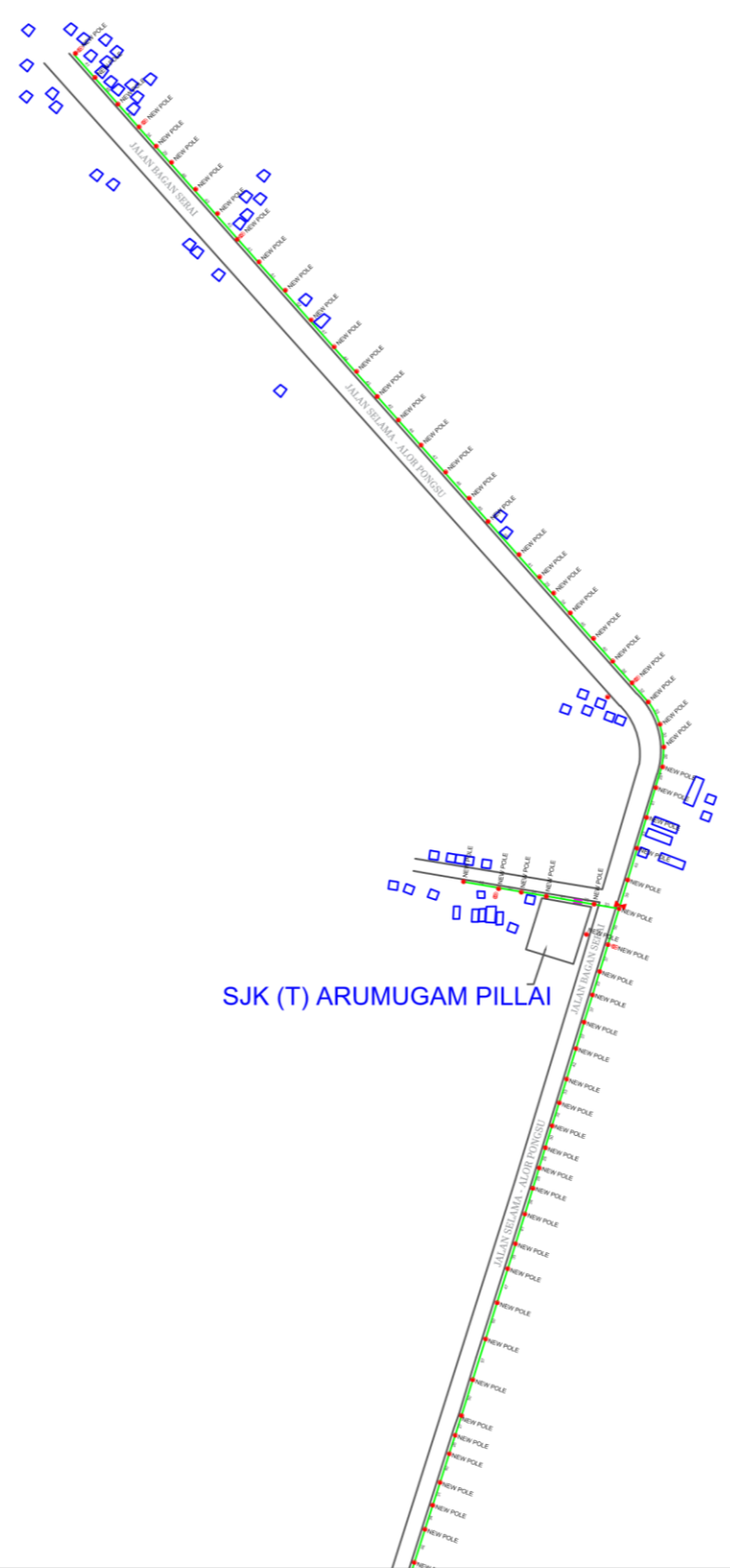
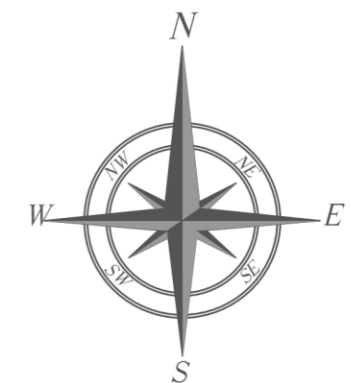
DRAWING TITLE:

PLAN SKJ(T) ARUMUGAM PILLAI

PROJECT PHASE:

ISSUE FOR DESIGN

Design By : KHAIRUL	Date : 18/05/2024
Drawn By : KHAIRUL	Scale : NOT TO SCALE
Checked By : IZATI	Job Number :
DRAWING NUMBER : ALLO/AA/006	Sheet : 1
THIS PRINT AND ITS COPYRIGHT ARE THE PROPERTY OF ALLO TECHNOLOGY SDN BHD	
Size : A3	

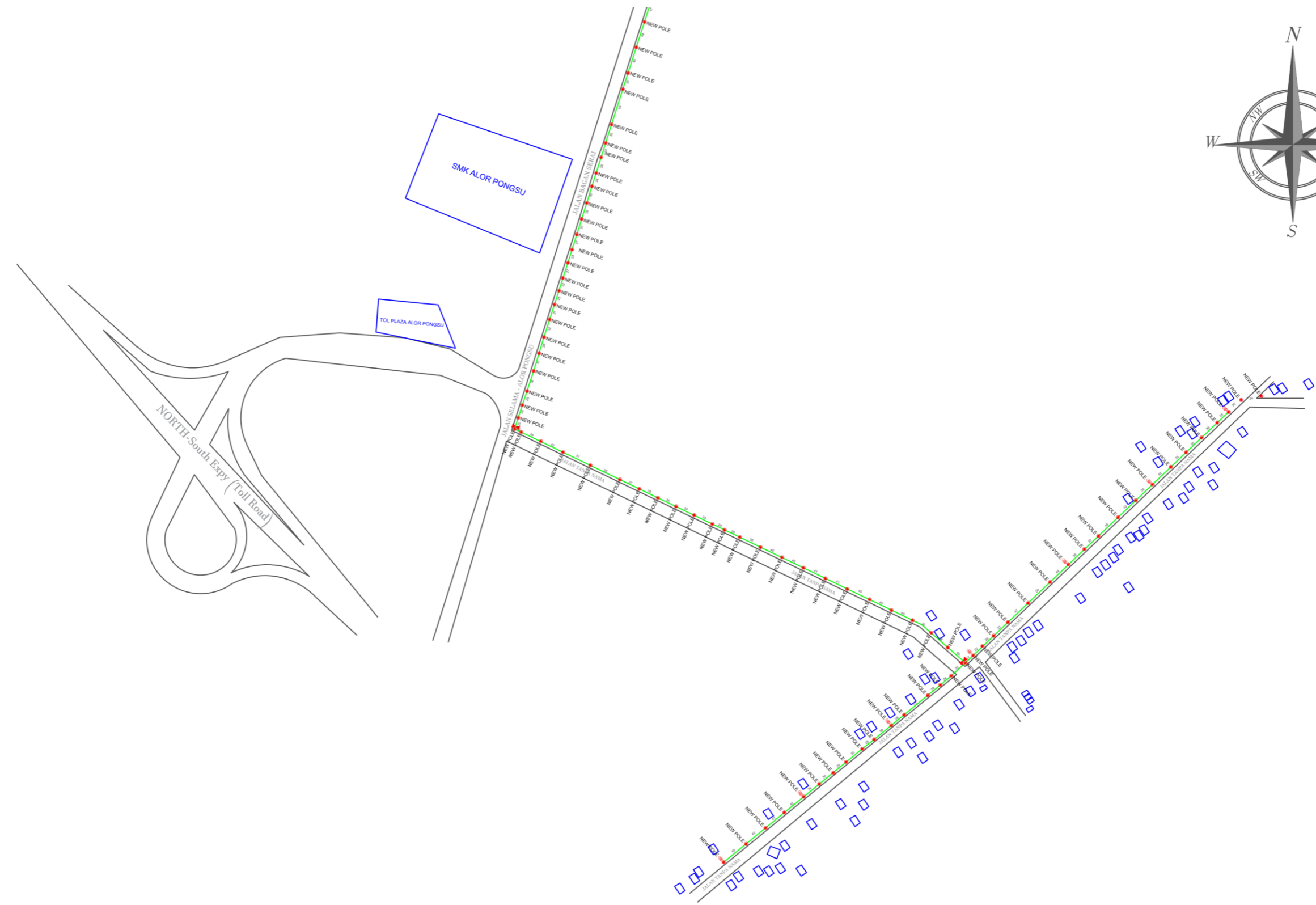
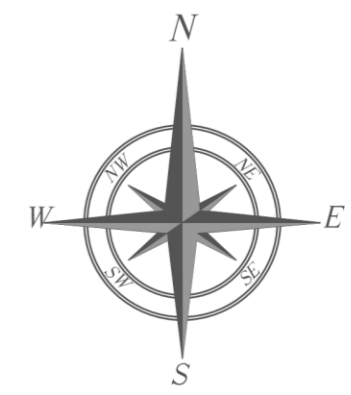


SJK (T) ARUMUGAM PILLAI

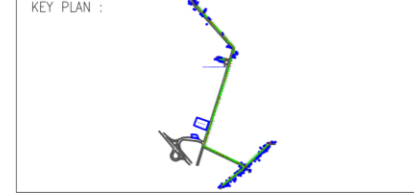
LEGEND					
12C FOC	Installed 1:8 splitter in FDC	Installed Pole (9m)	New Manhole(JRC7)	TS/TB Tension Small / Tension Big	MH1 MH NO.
24C FOC	FDP with (1:8) splitter	Installed Riser	# House Number	Existing Manhole	TKS-1 Existing TNB Pole NO.
36C FOC	Closure	Suspension Big	Existing TNB Pole	CL01 Closure NO.	P001 New Pole NO.
48C FOC	New Manhole (PIT)	Suspension Small	LOOP	DP1 FDP NO.	Pole Ring
96C FOC	Installed Pole (7.5M)	FDC	FDP Boundary	C01 FDC NO.	

(A) SEE A-A in this page (A)  
(A) SEE SHEET XXX (A)

KEY PLAN : 	OWNER / DEVELOPER: 	MAIN CONTRACTOR: 	SUB-CONTRACTOR: 	PROJECT TITLE: SUPPLY, INSTALLATION AND COMMISSIONING OF FTTX NETWORK INFRASTRUCTURE - POP 2 PROJECT (D-SIDE) - PMU BSRI FOR ABD3070 SJKT ARUMUGAM PILLAI	DRAWING TITLE: PLAN SKJ(T) ARUMUGAM PILLAI	Design By : KHAIRUL Date : 18/05/2024
					PROJECT PHASE: ISSUE FOR DESIGN	Drawn By : KHAIRUL Scale : NOT TO SCALE
						Checked By : IZATI Job Number :
						DRAWING NUMBER : ALLO/AA/006 Sheet : 1/2
						THIS PRINT AND ITS COPYRIGHT ARE THE PROPERTY OF ALLO TECHNOLOGY SDN BHD Size : A3



LEGEND	
	12C FOC
	24C FOC
	36C FOC
	48C FOC
	96C FOC
	Installed Pole (9m)
	Installed Pole (7.5M)
	Installed Riser
	Suspension Big
	Suspension Small
	FDC
	New Manhole(JRC7)
	House Number
	Existing TNB Pole
	LOOP
	FDP Boundary
	Tension Small / Tension Big
	Existing Manhole
	Closure NO.
	FDP NO.
	FDC NO.
	MH1 MH NO.
	TKS-1 Existing TNB Pole NO.
	P001 New Pole NO.
	Pole Ring
	SEE A-A in this page
	SEE SHEET XXX



OWNER / DEVELOPER:

KEMENTERIAN KOMUNIKASI DAN DIGITAL

MAIN CONTRACTOR:

APPEX COMMUNICATIONS SDN BHD  
187425-V

PRIVASAT

SUB-CONTRACTOR:

allo! The Smarter Connection  
ALLO TECHNOLOGY SDN BHD  
Level 3, Left Wing,  
College of Computer Science & Information Technology (CSIT)  
UNITEN, 43000 Kajang, Selangor  
TEL: 1 300-38-8000  
FAX: (60) 3 8000 5221  
E-MAIL: info@allo.my WEBSITE: HTTP://WWW.ALLO.MY

PROJECT TITLE:

SUPPLY, INSTALLATION AND COMMISSIONING OF FTTH NETWORK INFRASTRUCTURE - POP 2 PROJECT (D-SIDE) - PMU BSRI FOR ABD3070 SJKT ARUMUGAM PILLAI

DRAWING TITLE:

PLAN SJK(T) ARUMUGAM PILLAI

PROJECT PHASE: ISSUE FOR DESIGN

Design By : KHAIRUL	Date : 18/05/2024
Drawn By : KHAIRUL	Scale : NOT TO SCALE
Checked By : IZATI	Job Number :
DRAWING NUMBER : ALLO/AA/006	Sheet : 2/2
THIS PRINT AND ITS COPYRIGHT ARE THE PROPERTY OF ALLO TECHNOLOGY SDN BHD	
Size : A3	