



PROJEK PENYEDIAAN DAN PENYELENGGARAAN POINT OF PRESENCE (POP)  
FASA 2: HAB INFRASTRUKTUR GENTIAN OPTIK BERHAMPIRAN DENGAN  
SEKOLAH, KAWASAN PERINDUSTRIAN, PREMIS KERAJAAN DAN KOMUNITI  
SEKITARNYA OLEH KEMENTERIAN KOMUNIKASI MALAYSIA - ZON UTARA  
(KKMM.400-11/17/132(1))



## TECHNICAL PROPOSAL POP2 AEE0040 – SEKOLAH MENENGAH KEBANGSAAN SUNGKAI (D-SIDE)

Company Name:	STEADCOM SDN BHD
Company Address:	11-3, Jalan Puteri 2/6, Bandar Puteri, 47100 Puchong, Selangor
Prepared By:	Fassya
Date:	17/12/2024



### Starting Point

Site / Boundary Name	Sungkai
Address	Sekolah Menengah Kebangsaan Sungkai 35600 Sungkai Perak
District	Sungkai
Postcode	35600
State	Perak
GPS Coordinate	3.992822, 101.310023
LRD	A

### End Point

Site / Boundary Name	Sungkai
Address	Kampung Buloh Telor, Perak
District	Sungkai
Postcode	35600
State	Perak
GPS Coordinate	3.995437, 101.310647
LRD	B



PROJEK PENYEDIAAN DAN PENYELENGGARAAN POINT OF PRESENCE (POP)  
 FASA 2: HAB INFRASTRUKTUR GENTIAN OPTIK BERHAMPIRAN DENGAN  
 SEKOLAH, KAWASAN PERINDUSTRIAN, PREMIS KERAJAAN DAN KOMUNITI  
 SEKITARNYA OLEH KEMENTERIAN KOMUNIKASI MALAYSIA - ZON UTARA  
 (KKMM.400-11/17/132(1))



A member of OCK Group Berhad

## 1.0 Work Summary

No	Proposed Distance and Method	Unit	Qty
1	Horizontal Directional Drilling (HDD)	m	0
2	Carriage Way Open trench (CW)	m	0
3	Grass Verge Open Trenching (GV)	m	0
4	Micro trenching (MT)	m	0
	Total		

	Other Information	Unit	Qty
1	Proposed Manhole	EA	0
2	Proposed Pole	EA	31pcs
3	Joint Closure	EA	2pcs
4	Estimated time required for completion	days	0



PROJEK PENYEDIAAN DAN PENYELENGGARAAN POINT OF PRESENCE (POP)  
 FASA 2: HAB INFRASTRUKTUR GENTIAN OPTIK BERHAMPIRAN DENGAN  
 SEKOLAH, KAWASAN PERINDUSTRIAN, PREMIS KERAJAAN DAN KOMUNITI  
 SEKITARNYA OLEH KEMENTERIAN KOMUNIKASI MALAYSIA - ZON UTARA  
 (KKMM.400-11/17/132(1))

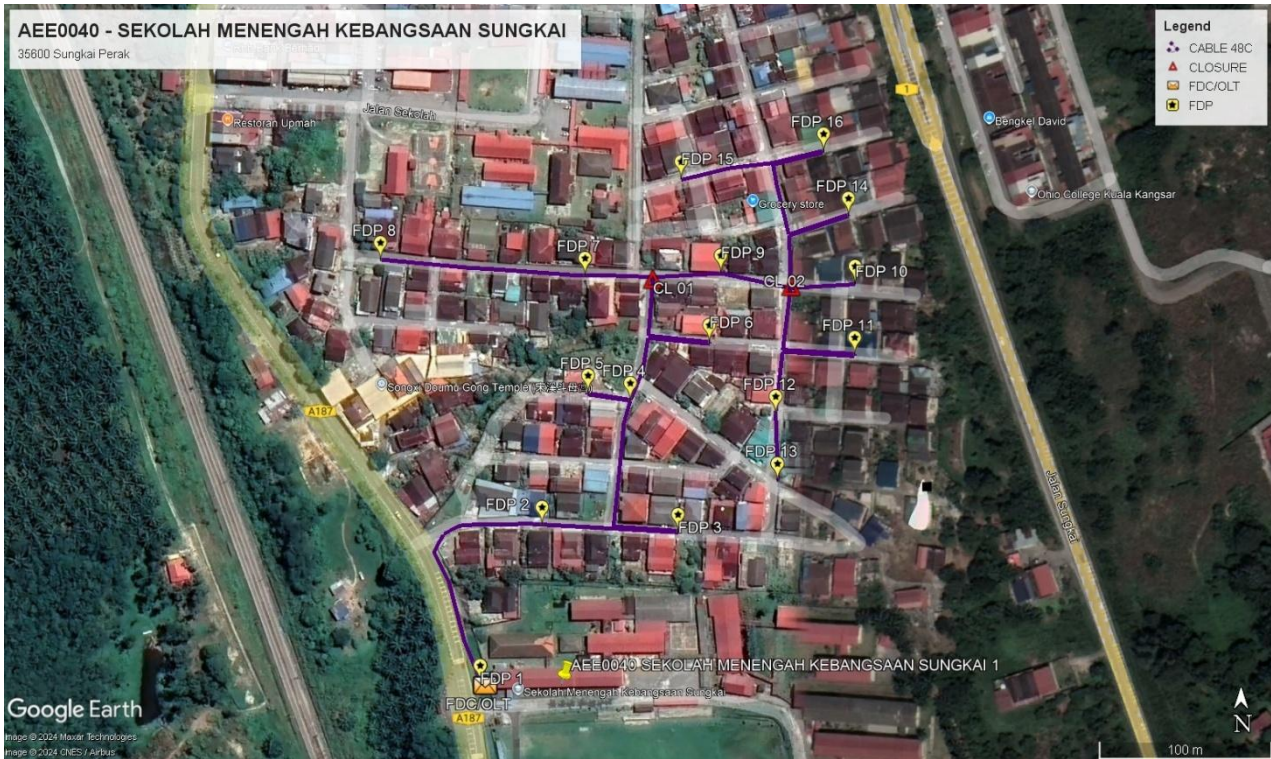


## 2.0 LOCAL AUTHORITY SUMMARY

Daerah Tapah

Bil	Items	Owner	Quantity	Distance
1	HDD	JKR	-	-
		Majlis	-	-
		Estate / Private Land	-	-
2	New Pole	JKR	4pcs	90m
		Majlis	27	1177m
		Estate / Private Land	-	-
3	Existing TNB Pole	JKR	-	-
		Majlis	-	-
		Estate / Private Land	-	-
Total				1267m

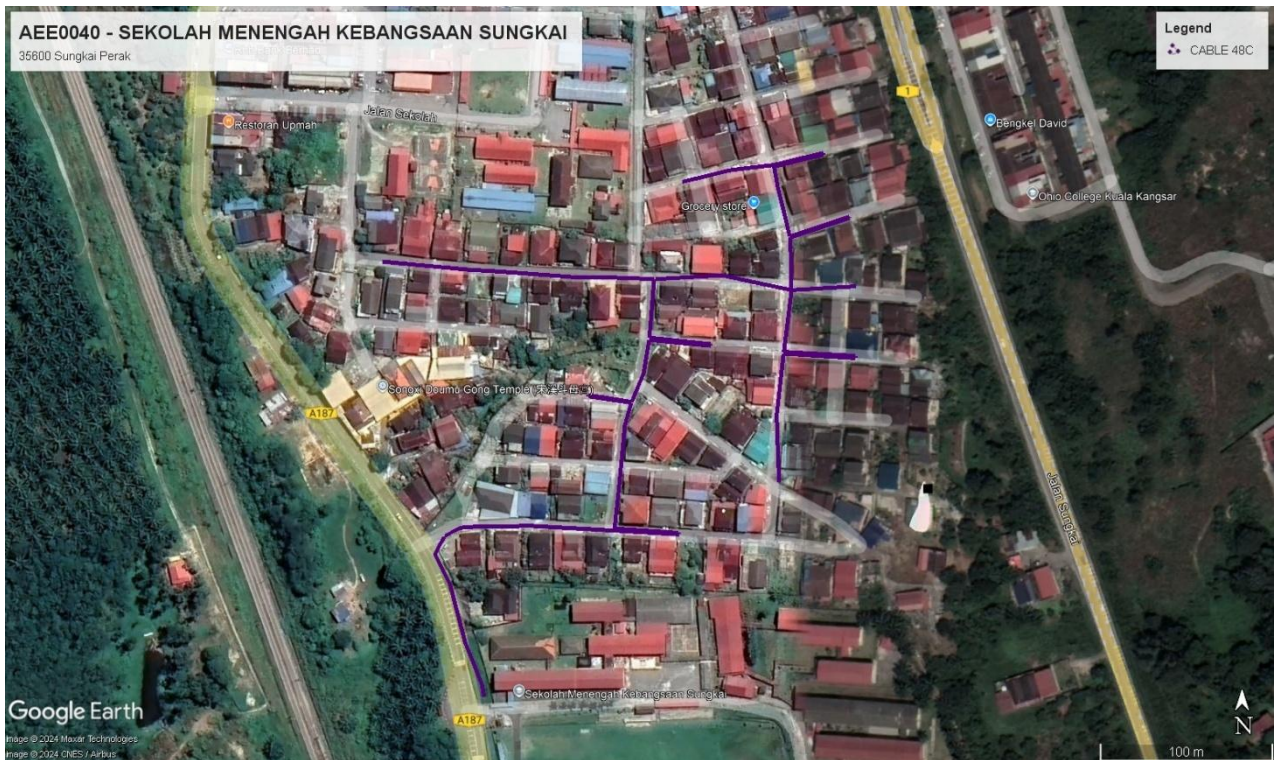
**3.0 SITE PLAN KMZ (Overview site area)**  
**3.1 Proposed FDP and Closure**



**3.2 Proposed New Pole**



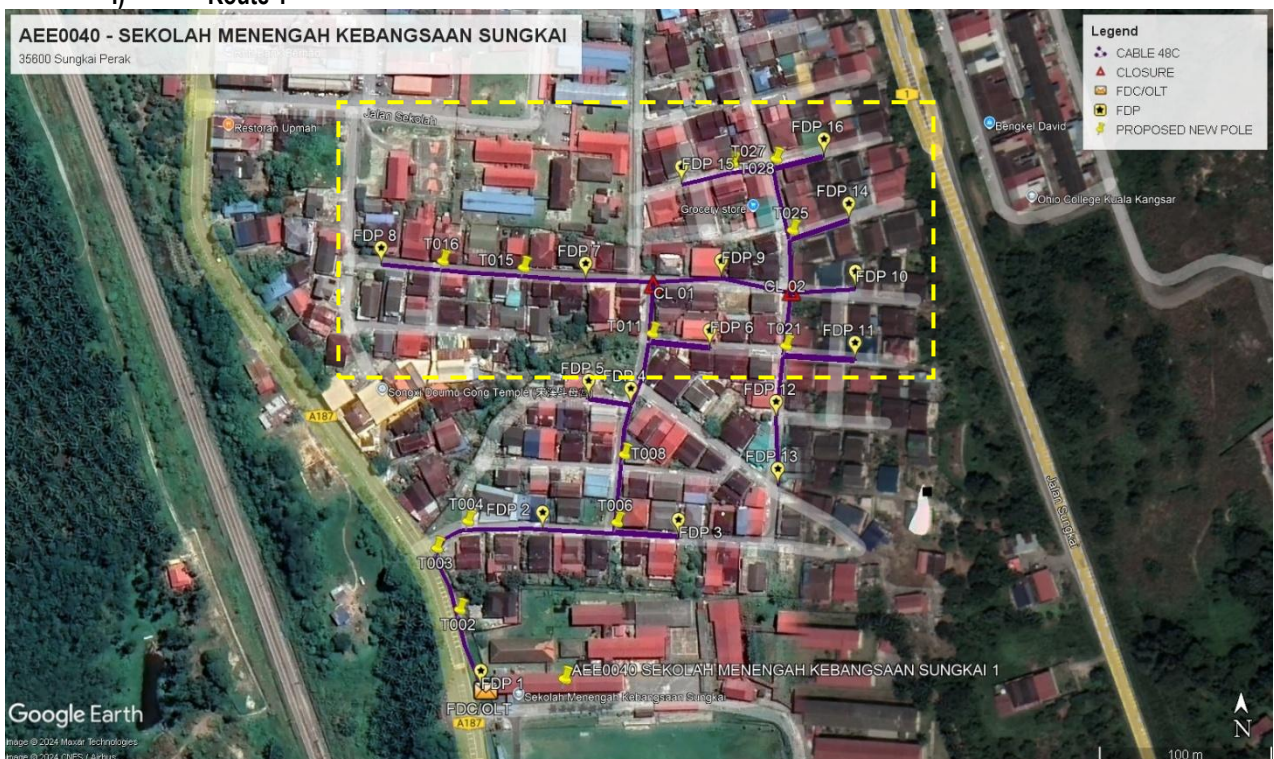
### 3.3 Site Plan KMZ Routing (All Local Authority)



Purple Colour – PBT Road

### 3.4 Site Plan – KMZ (All site Area)

#### i) Route 1

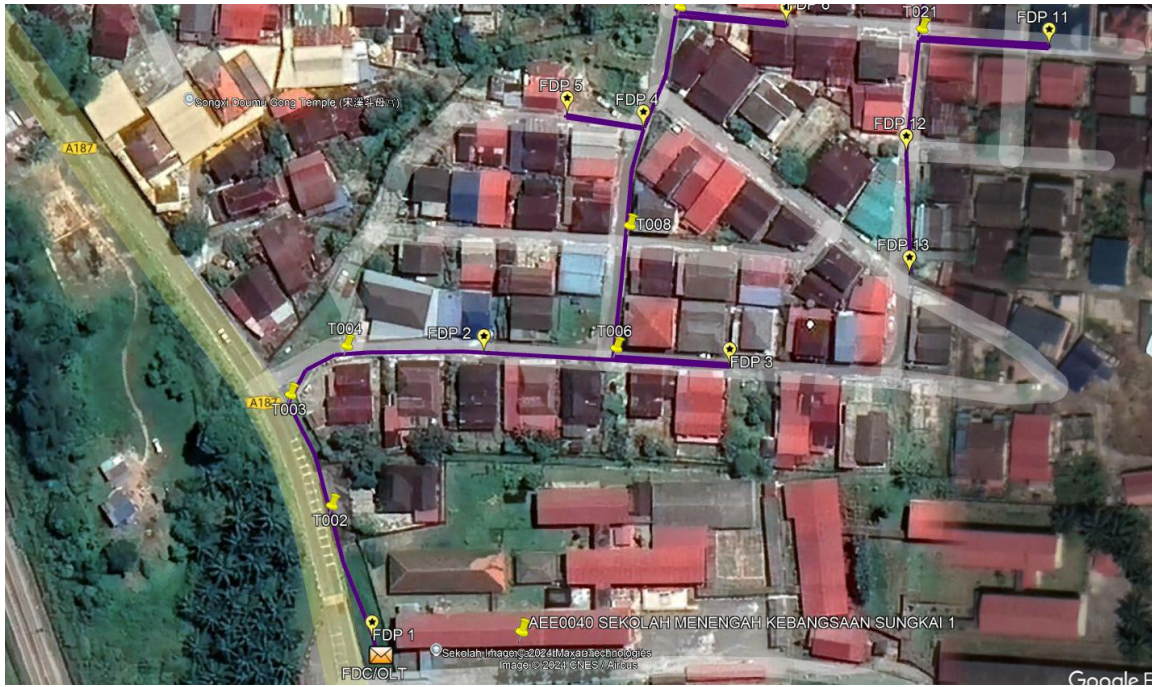




Route: 1.1

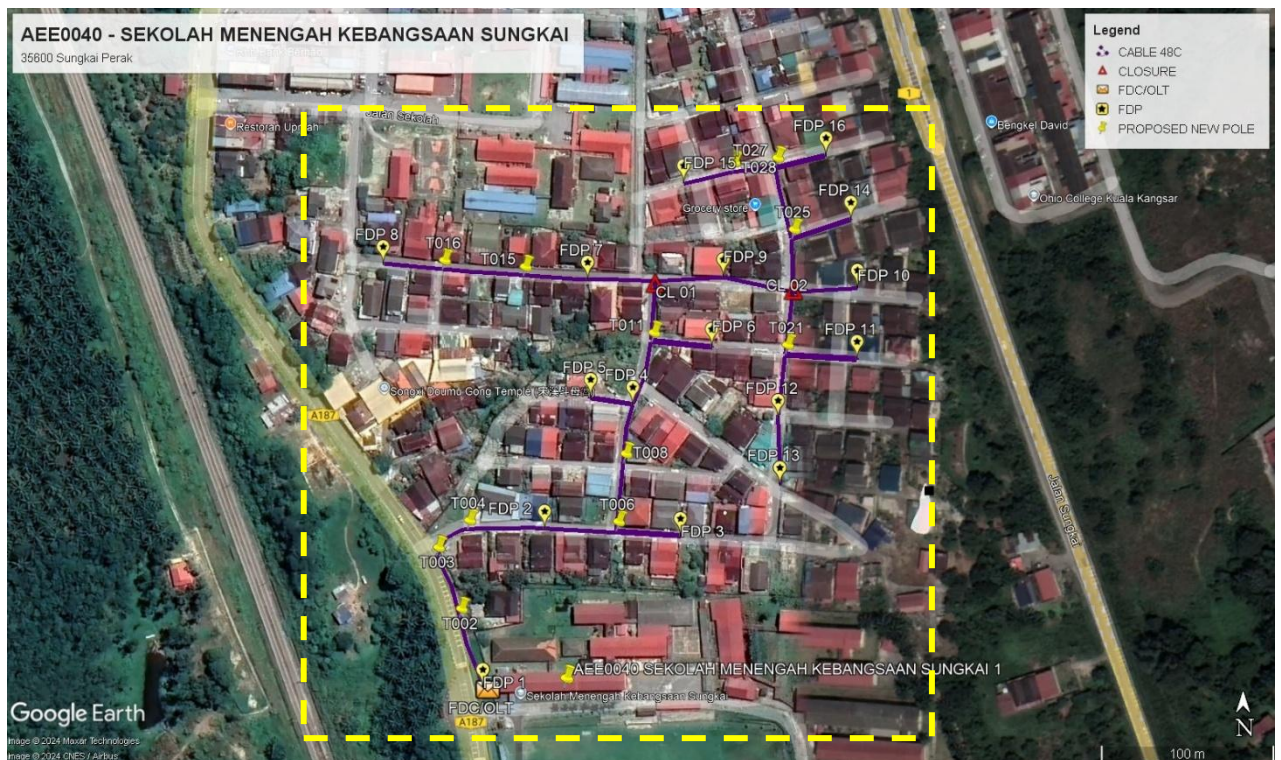
ii) Route 2





Route:2.1

3.5 Site Plan – KMZ Routing (Proposed New Pole)





PROJEK PENYEDIAAN DAN PENYELENGGARAAN POINT OF PRESENCE (POP)  
 FASA 2: HAB INFRASTRUKTUR GENTIAN OPTIK BERHAMPIRAN DENGAN  
 SEKOLAH, KAWASAN PERINDUSTRIAN, PREMIS KERAJAAN DAN KOMUNITI  
 SEKITARNYA OLEH KEMENTERIAN KOMUNIKASI MALAYSIA - ZON UTARA  
 (KKMM.400-11/17/132(1))



#### 4.0 Proposed New Pole Lat & long Table

NO	LABEL	POLE & MANHOLE ID	LATITUDE	LONGITUDE	LOCAL AUTHORITY
1	CL 01	T013	3.9949242	101.3105	MD TAPAH
2	CL 02	T019	3.9948874	101.3112194	MD TAPAH
3	FDC/OLT	T000	3.9927451	101.3096272	JKR NEGERI
4	FDP 1	T001	3.99283	101.3096014	JKR NEGERI
5	FDP 10	T020	3.9948994	101.3115507	MD TAPAH
6	FDP 11	T022	3.9945303	101.3115487	MD TAPAH
7	FDP 12	T023	3.9942248	101.3111377	MD TAPAH
8	FDP 13	T024	3.9938763	101.311147	MD TAPAH
9	FDP 14	T026	3.9952518	101.3115161	MD TAPAH
10	FDP 15	T029	3.9954423	101.310646	MD TAPAH
11	FDP 16	T030	3.9955856	101.3113867	MD TAPAH
12	FDP 2	T005	3.9936505	101.3099229	MD TAPAH
13	FDP 3	T007	3.9936128	101.3106297	MD TAPAH
14	FDP 4	T009	3.9942937	101.3103817	MD TAPAH
15	FDP 5	T010	3.9943335	101.3101622	MD TAPAH
16	FDP 6	T012	3.9945945	101.3107928	MD TAPAH
17	FDP 7	T014	3.9949412	101.3101464	MD TAPAH
18	FDP 8	T017	3.995022	101.3090827	MD TAPAH
19	FDP 9	T018	3.9949559	101.3108524	MD TAPAH



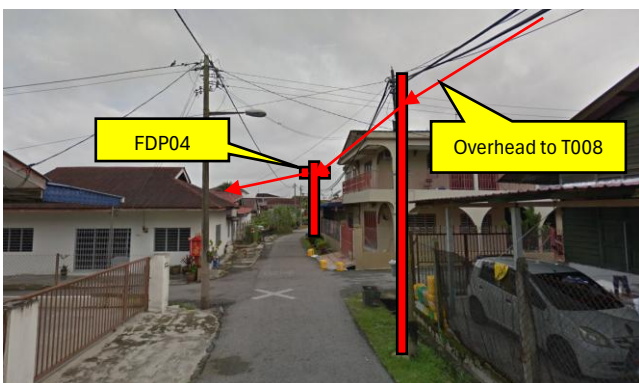
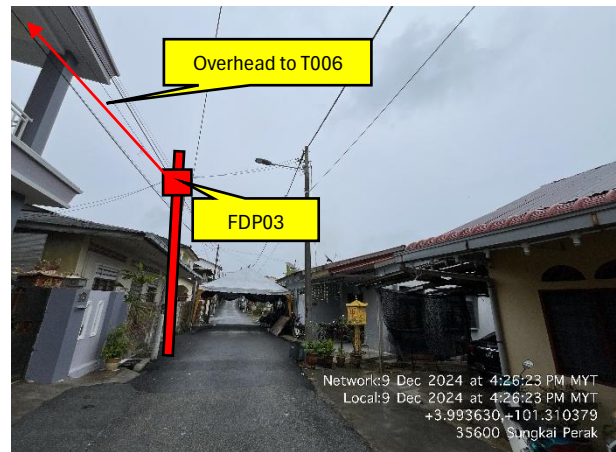
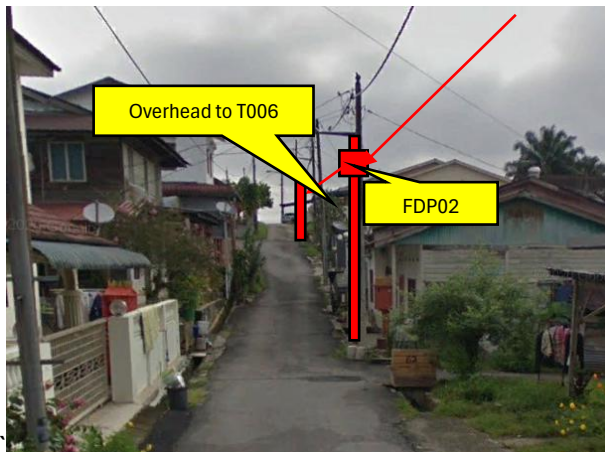
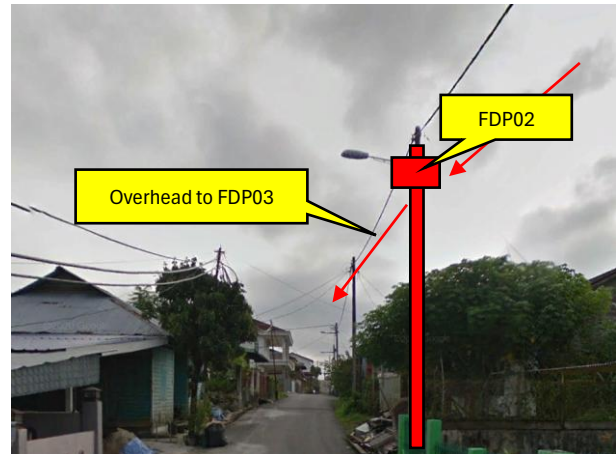
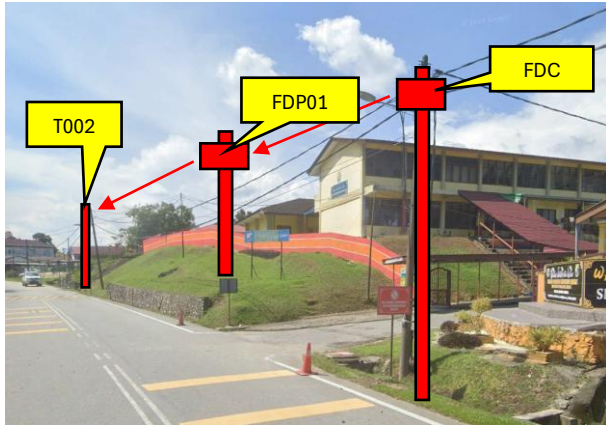
PROJEK PENYEDIAAN DAN PENYELENGGARAAN POINT OF PRESENCE (POP)  
 FASA 2: HAB INFRASTRUKTUR GENTIAN OPTIK BERHAMPIRAN DENGAN  
 SEKOLAH, KAWASAN PERINDUSTRIAN, PREMIS KERAJAAN DAN KOMUNITI  
 SEKITARNYA OLEH KEMENTERIAN KOMUNIKASI MALAYSIA - ZON UTARA  
 (KKMM.400-11/17/132(1))

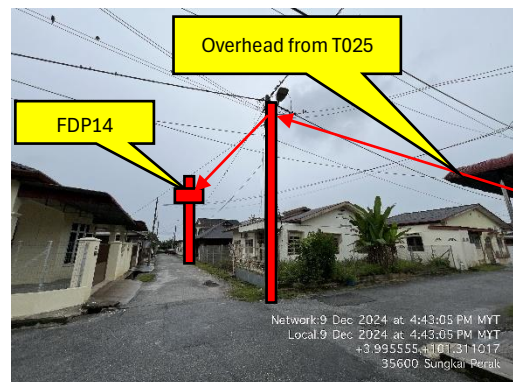
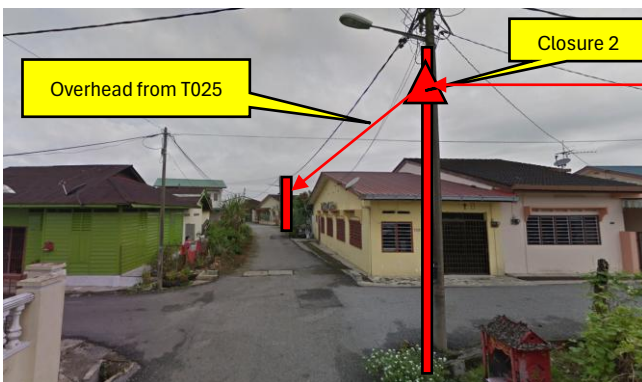
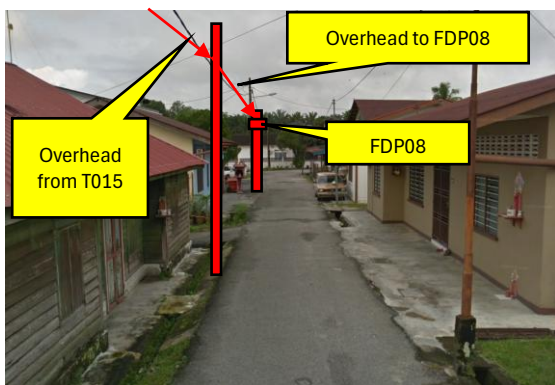
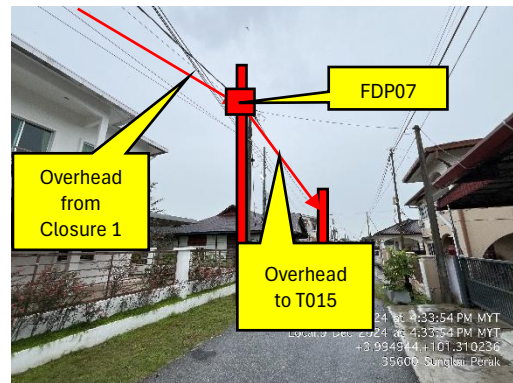
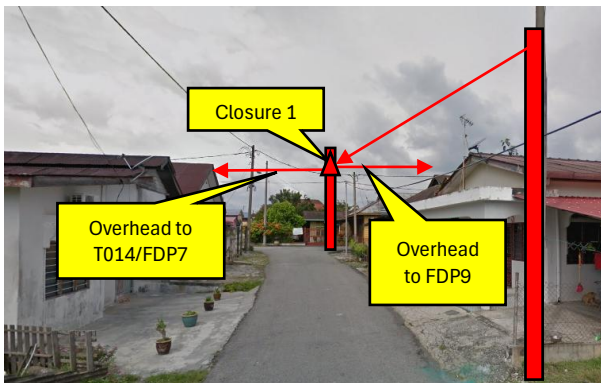


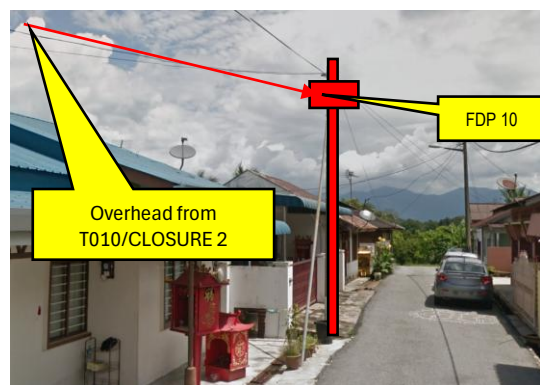
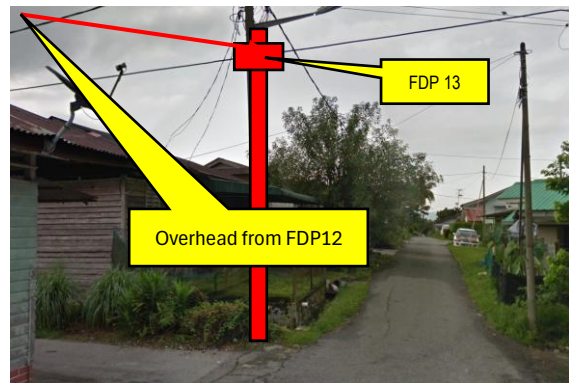
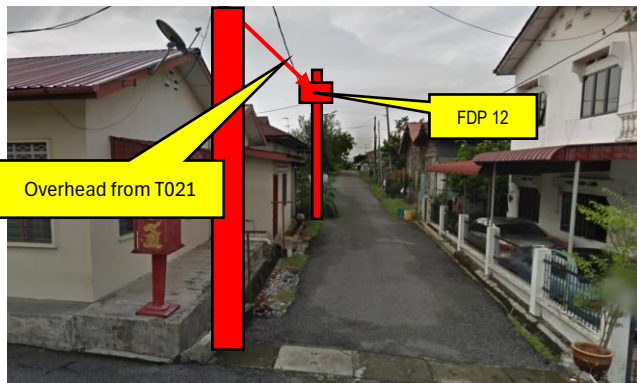
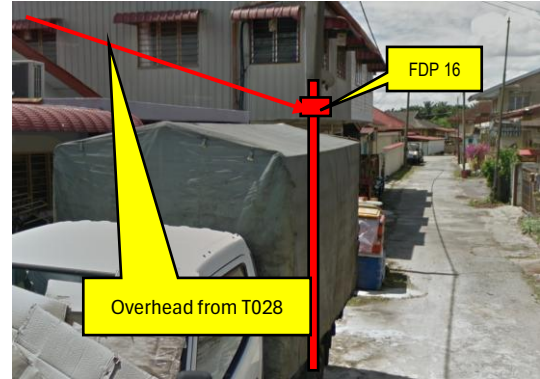
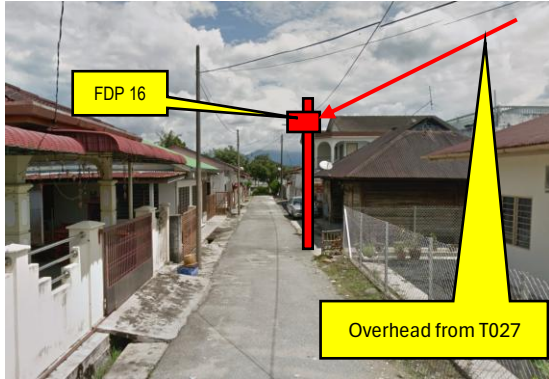
#### 4.1 Overall Pole (Proposed New Pole)

NO	POLE & MANHOLE ID	DISTANCE (M)	LATITUDE	LONGITUDE	LOCAL AUTHORITY
1	T000	0	3.9927451	101.3096272	JKR NEGERI
2	T001	25	3.99283	101.3096014	JKR NEGERI
3	T002	27	3.9931867	101.309478	JKR NEGERI
4	T003	38	3.9935047	101.3093592	JKR NEGERI
5	T004	24	3.9936449	101.3095207	MD TAPAH
6	T005	45	3.9936505	101.3099229	MD TAPAH
7	T006	41	3.9936378	101.3102959	MD TAPAH
8	T007	74	3.9936128	101.3106297	MD TAPAH
9	T008	39	3.9939899	101.3103344	MD TAPAH
10	T009	34	3.9942937	101.3103817	MD TAPAH
11	T010	25	3.9943335	101.3101622	MD TAPAH
12	T011	37	3.9946175	101.3104795	MD TAPAH
13	T012	35	3.9945945	101.3107928	MD TAPAH
14	T013	34	3.9949242	101.3105	MD TAPAH
15	T014	39	3.9949412	101.3101464	MD TAPAH
16	T015	37	3.9949597	101.3098107	MD TAPAH
17	T016	47	3.9949931	101.30939	MD TAPAH
18	T017	34	3.995022	101.3090827	MD TAPAH
19	T018	39	3.9949559	101.3108524	MD TAPAH
20	T019	41	3.9948874	101.3112194	MD TAPAH
21	T020	37	3.9948994	101.3115507	MD TAPAH
22	T021	37	3.994554	101.3111753	MD TAPAH
23	T022	83	3.9945303	101.3115487	MD TAPAH
24	T023	37	3.9942248	101.3111377	MD TAPAH
25	T024	39	3.9938763	101.311147	MD TAPAH
26	T025	29	3.9951526	101.3112099	MD TAPAH
27	T026	72	3.9952518	101.3115161	MD TAPAH
28	T027	42	3.9955234	101.3111237	MD TAPAH
29	T028	25	3.9955019	101.3108986	MD TAPAH
30	T029	29	3.9954423	101.310646	MD TAPAH
31	T030	30	3.9955856	101.3113867	MD TAPAH

5.0 SITE PHOTO – PROPOSED NEW POLE







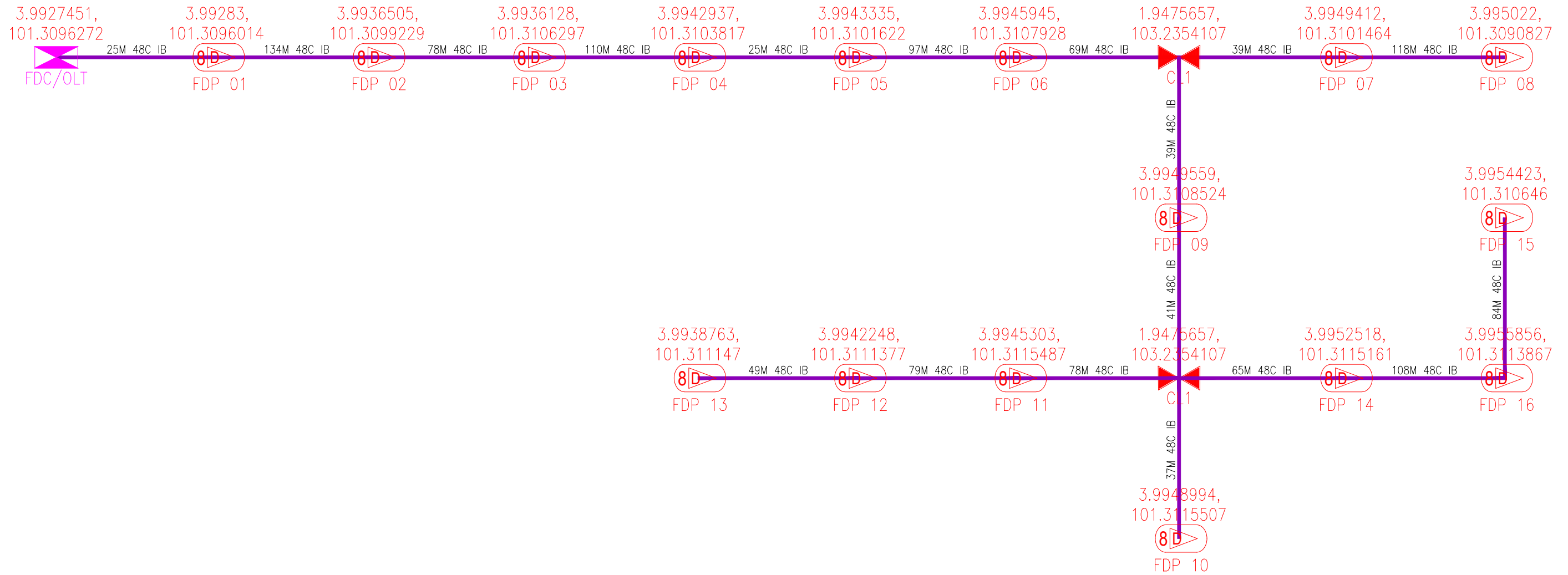


PROJEK PENYEDIAAN DAN PENYELENGGARAAN POINT OF PRESENCE (POP)  
FASA 2: HAB INFRASTRUKTUR GENTIAN OPTIK BERHAMPIRAN DENGAN  
SEKOLAH, KAWASAN PERINDUSTRIAN, PREMIS KERAJAAN DAN KOMUNITI  
SEKITARNYA OLEH KEMENTERIAN KOMUNIKASI MALAYSIA - ZON UTARA  
(KKMM.400-11/17/132(1))



#### 6.0 3<sup>rd</sup> PARTIES DEPENDENCIES

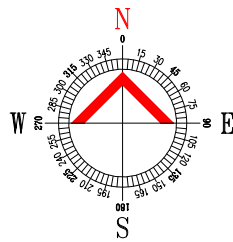
NO	LOCAL COUNCIL / AUTHORITY	REMARK
1	N/A	



LEGEND	NOS.	NOS.	NOS.	NOS.	NOS.	NOS.	NOS.	NOS.			
	12C FOC		Installed 1:4 splitter in FDC		Installed Pole (9m)		New Manhole(JRC7)		Tension Small / Tension Big		MH NO.
	24C FOC		FDP with (1:8) splitter		Installed Riser		House Number		Existing Manhole		Existing TNB Pole NO.
	48C FOC		Closure		Suspension Big		Existing TNB Pole		Closure NO.		New Pole NO.
	96C FOC		New Manhole (PIT)		Suspension Small		LOOP		FDP NO.		SEE A-A in this page
	144C FOC		Installed Pole (7.5M)		FDC		FDP Boundary		FDC NO.		SEE SHEET XXX

<b>KEY PLAN :</b>  POP2 PROJECT IN PERAK	<b>MAIN CONTRACTOR</b>  	<b>SUB-CONTRACTOR :</b>  A member of FOCK Group Berhad	<b>PROJECT TITLE :</b> CONTRACTOR FOR SURVEY, TECHNICAL PROPOSAL AND WAYLEAVE,& PERMIT APPROVAL -POP2 PROJECT	<b>DRAWING TITLE:</b> SINGLE LINE DRAWING AEE040 SEKOLAH MENENGAH KEBANGSAAN SUNGKAI 1	<b>Design By :</b> FITRI <b>Drawn By :</b> FITRI <b>Checked By :</b> AMSYAR	<b>Date :</b> 12/12/2024 <b>Scale :</b> N.T.S <b>Job Number :</b> JOB_NUMBER
				<b>PROJECT PHASE:</b> POP2	<b>DRAWING NUMBER :</b> ARAA001-SLD-01	<b>Sheet :</b> 1/1  <b>Size :</b> A3

THIS PRINT AND ITS COPYRIGHT ARE THE PROPERTY OF ALLO TECHNOLOGY SDN BHD



LEGEND	NOS.	NOS.	NOS.	NOS.	NOS.	NOS.	NOS.
	12C FOC		Installed Pole (9m)		New Manhole(JRC7)		Tension Small / Tension Big
	24C FOC		Installed Pole (7.5M)		House Number		MH NO.
	48C FOC		Installed Pole (7.5M)		Existing Manhole		Existing TNB Pole NO.
	96C FOC		Installed Pole (7.5M)		Existing TNB Pole		New Pole NO.
	144C FOC		Installed Pole (7.5M)		LOOP		
			Installed Pole (7.5M)		FDP Boundary		
			Installed Pole (7.5M)		FDP Boundary		

ACTUAL HOMEPASS :

<b>KEY PLAN :</b>  POP2 PROJECT IN PERAK	<b>MAIN CONTRACTOR</b>  	<b>SUB-CONTRACTOR :</b>  A member of FOCK Group Berhad	<b>PROJECT TITLE :</b> CONTRACTOR FOR SURVEY, TECHNICAL PROPOSAL AND WAYLEAVE, & PERMIT APPROVAL -POP2 PROJECT	<b>DRAWING TITLE:</b> SINGLE LINE DRAWING AEE0040 SEKOLAH MENENGAH KEBANGSAAN SUNGKAI 1  <b>PROJECT PHASE:</b> POP2	<b>Design By :</b> FITRI	<b>Date :</b> 12/12/2024
					<b>Drawn By :</b> FITRI	<b>Scale :</b> N.T.S
					<b>Checked By :</b> AMSYAR	<b>Job Number :</b> JOB_NUMBER
					<b>DRAWING NUMBER :</b> AEE0040-CD-01	<b>Sheet :</b> 01/01
					<b>THIS PRINT AND ITS COPYRIGHT ARE THE PROPERTY OF ALLO TECHNOLOGY SDN BHD</b>	<b>Size :</b> A3