

TECHNICAL PROPOSAL

POP2 ABAB001 SEKOLAH KEBANGSAAN TAPAK SEMENANG (D-SIDE)

Company Name : KNZ ENGINEERING SDN BHD.
Company Address : NO 60 & 60 A JALAN KLEBANG INDAH 1 MEDAN KLEBANG INDAH 30010 IPOH PERAK
Prepared By : SEVANTHI A/P SELVAM
Date : 12/06/2025



Starting Point

Site / Boundary Name : Teluk Intan
Address : SK Tapak Semenang, Kampung Tapak Semenang, Mukim Teluk Bharu, 36000 Teluk Intan
District : Teluk Intan
Postcode : 36000
State : Perak
GPS Coordinate : 3.95367309420081, 100.948308764455
LRD : A

End Point

Site / Boundary Name : Teluk Intan
Address : Kampung Tanjung Sari, 36000 Teluk Intan, Perak
District : Teluk Intan
Postcode : 36000
State : Perak
GPS Coordinate : 3.96711835678832, 100.929499275503
LRD : B



PROJEK PENYEDIAAN DAN PENYELENGGARAAN POINT OF PRESENCE (POP) FASA 2: HAB INFRASTRUKTUR GENTIAN OPTIK BERHAMPIRAN DENGAN SEKOLAH, KAWASAN PERINDUSTRIAN, PREMIS KERAJAAN DAN KOMUNITI SEKITARNYA OLEH KEMENTERIAN KOMUNIKASI MALAYSIA – ZON UTARA (KKMM.400-11/17/132(1))



1.0 WORK SUMMARY

NO	PROPOSED DISTANCE AND METHOD	UNIT	QUANTITY
1	Horizontal Directional Drilling (HDD)	m	650
2	Carriage Way Open Trench (CW)	m	0
3	Grass Verge Open Trenching (GV)	m	18
4	Micro Trenching (MT)	m	0
Total			180

NO	OTHER INFORMATION	UNIT	QUANTITY
1	Installation of Short Span ADSS Fibre Cables	m	11,200
2	Install New Pole	ea	243
3	Install New JRC7 Manhole	ea	6
4	Install GI Riser 100mm	ea	6
5	Install Fiber Distribution Point	ea	12
6	Install Closure	ea	7
7	Estimated Time Required for Completion	days	30

2.0 LOCAL AUTHORITY SUMMARY

Daerah Hilir Perak

Bil	Items	Owner	Quantity	Distance
1	HDD	JKR	12	650m
		PDT	-	-
		Estate / Private Land	-	-
2	New Pole	JKR	-	-
		PDT	243	10,000m
		Estate / Private Land	-	-
3	Existing TNB Pole	JKR	-	-
		PDT	-	-
		Estate / Private Land	-	-
Total				10,650m

Site Plan -KMZ (Overview site area)

Proposed FDP and Closure



Proposed New Pole



Site Plan - KMZ Routing (All Local Authority)

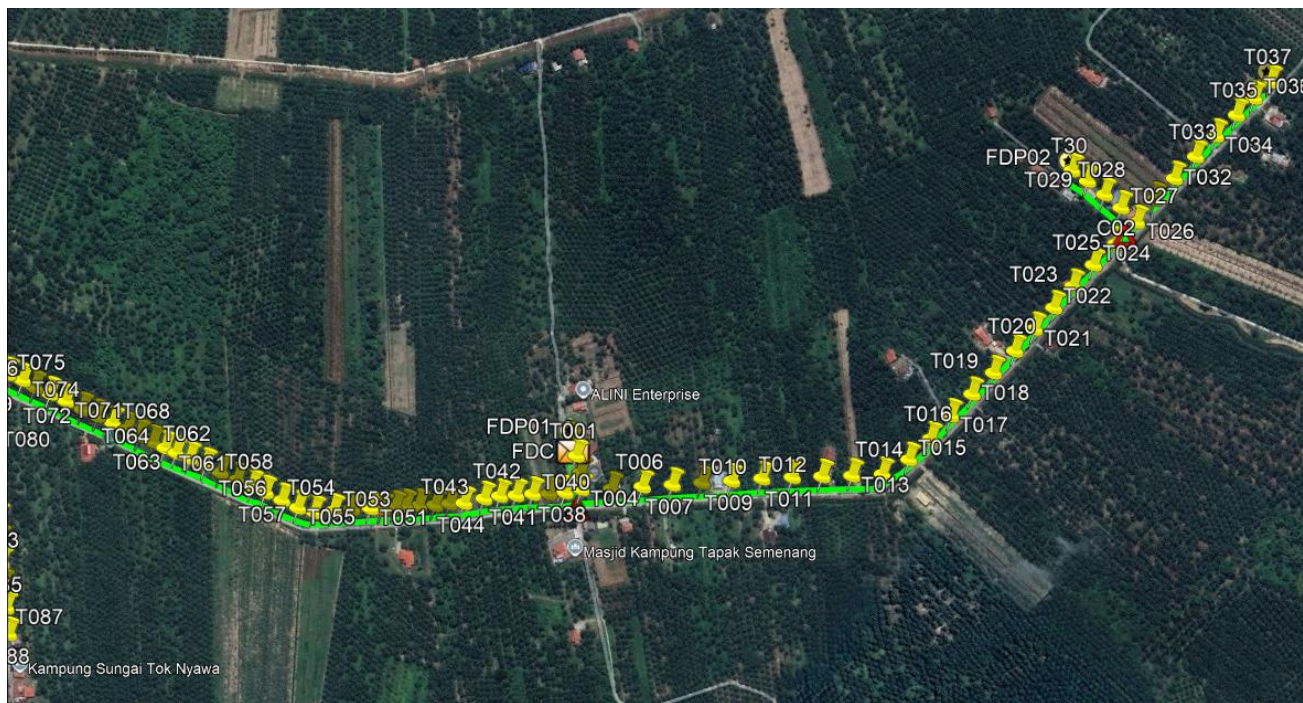


Red Colour – JKR Road

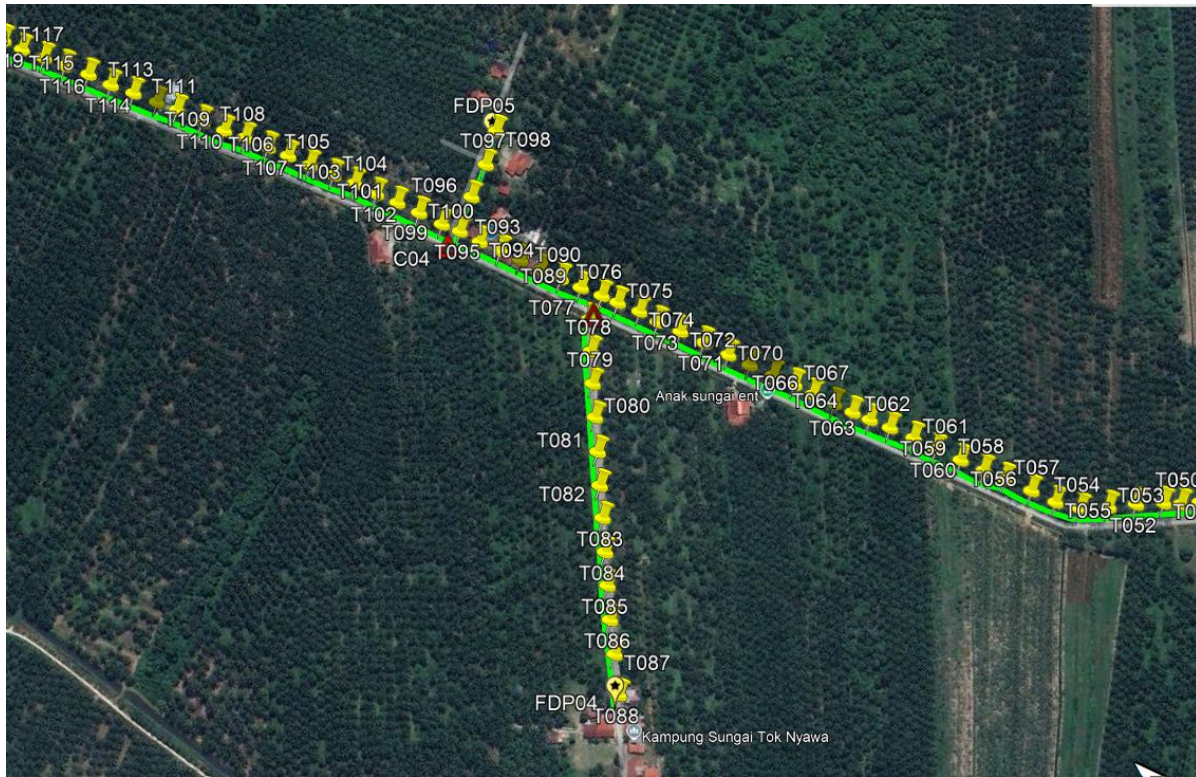
Yellow Colour – PDT Road

Site Plan – KMZ Routing (All site area)

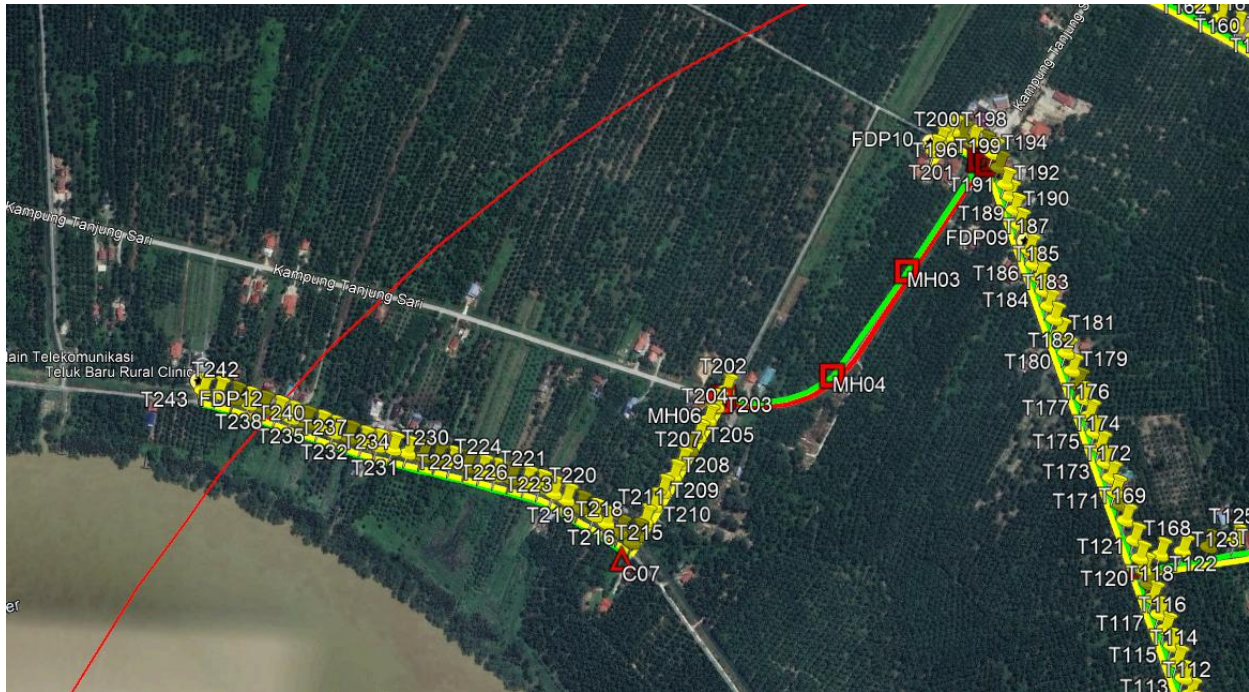
Route 1



Route 1.1



Route 1.2



Route 2.2

3.0 PROPOSED NEW POLE

Proposed New Pole Coordinate					
No.	Pole Number	Distance (m)	Latitude	Longitude	Local Authority
1	T001	40	3.953673094	100.9483088	PDT Hilir Perak
2	T002	40	3.953852918	100.9484301	PDT Hilir Perak
3	T003	40	3.953485596	100.9481827	PDT Hilir Perak
4	T004	40	3.953331035	100.9480337	PDT Hilir Perak
5	T005	40	3.953049193	100.9483058	PDT Hilir Perak
6	T006	40	3.95277864	100.9486017	PDT Hilir Perak
7	T007	40	3.95251148	100.9488864	PDT Hilir Perak
8	T008	40	3.952249722	100.9491679	PDT Hilir Perak
9	T009	40	3.951986982	100.9494488	PDT Hilir Perak
10	T010	40	3.951723258	100.9497398	PDT Hilir Perak
11	T011	40	3.951448494	100.9500224	PDT Hilir Perak
12	T012	40	3.95117821	100.9502928	PDT Hilir Perak
13	T013	40	3.950904477	100.9505635	PDT Hilir Perak
14	T014	40	3.95062927	100.9508462	PDT Hilir Perak
15	T015	40	3.950510021	100.9512209	PDT Hilir Perak
16	T016	40	3.950485587	100.9516116	PDT Hilir Perak
17	T017	40	3.950497776	100.9520073	PDT Hilir Perak
18	T018	40	3.950489356	100.9523998	PDT Hilir Perak
19	T019	40	3.950477154	100.9527894	PDT Hilir Perak
20	T020	40	3.950471749	100.9531826	PDT Hilir Perak
21	T021	40	3.950476109	100.9535656	PDT Hilir Perak
22	T022	40	3.950481035	100.9539407	PDT Hilir Perak
23	T023	40	3.950491949	100.9543152	PDT Hilir Perak
24	T024	40	3.950484739	100.9546979	PDT Hilir Perak
25	T025	40	3.950462375	100.9550946	PDT Hilir Perak
26	T026	40	3.950453897	100.9554854	PDT Hilir Perak

3.0 PROPOSED NEW POLE

Proposed New Pole Coordinate					
No.	Pole Number	Distance (m)	Latitude	Longitude	Local Authority
27	T027	40	3.950732483	100.9554773	PDT Hilir Perak
28	T028	40	3.951005539	100.9554555	PDT Hilir Perak
29	T029	40	3.951281893	100.9554322	PDT Hilir Perak
30	T030	40	3.951523309	100.9553969	PDT Hilir Perak
31	T031	40	3.950486456	100.9558641	PDT Hilir Perak
32	T032	40	3.950482147	100.9562399	PDT Hilir Perak
33	T033	40	3.950475329	100.9566331	PDT Hilir Perak
34	T034	40	3.950468474	100.9570107	PDT Hilir Perak
35	T035	40	3.950458222	100.9573886	PDT Hilir Perak
36	T036	40	3.950443116	100.9577016	PDT Hilir Perak
37	T037	40	3.950432581	100.958007	PDT Hilir Perak
38	T038	40	3.953455917	100.9478593	PDT Hilir Perak
39	T039	40	3.953598275	100.9477078	PDT Hilir Perak
40	T040	40	3.953748383	100.9475612	PDT Hilir Perak
41	T041	40	3.95389443	100.9474011	PDT Hilir Perak
42	T042	40	3.954040002	100.9472484	PDT Hilir Perak
43	T043	40	3.954167064	100.9470842	PDT Hilir Perak
44	T044	40	3.954315138	100.9468639	PDT Hilir Perak
45	T045	40	3.954446908	100.9467305	PDT Hilir Perak
46	T046	40	3.954572638	100.9465862	PDT Hilir Perak
47	T047	40	3.954718453	100.9464345	PDT Hilir Perak
48	T048	40	3.954840849	100.9463107	PDT Hilir Perak
49	T049	40	3.9549259	100.9462055	PDT Hilir Perak
50	T050	40	3.955033902	100.9460839	PDT Hilir Perak
51	T051	40	3.955150086	100.9459865	PDT Hilir Perak
52	T052	40	3.9553168	100.9458155	PDT Hilir Perak
53	T053	40	3.955475075	100.9456345	PDT Hilir Perak

3.0 PROPOSED NEW POLE

Proposed New Pole Coordinate					
No.	Pole Number	Distance (m)	Latitude	Longitude	Local Authority
54	T054	40	3.955644166	100.9454545	PDT Hilir Perak
55	T055	40	3.955837117	100.945351	PDT Hilir Perak
56	T056	40	3.95605372	100.9452818	PDT Hilir Perak
57	T057	40	3.956283068	100.9452021	PDT Hilir Perak
58	T058	40	3.956460045	100.9451388	PDT Hilir Perak
59	T059	40	3.956663661	100.9450684	PDT Hilir Perak
60	T060	40	3.956883543	100.9449883	PDT Hilir Perak
61	T061	40	3.957089886	100.9449297	PDT Hilir Perak
62	T062	40	3.957297961	100.9448523	PDT Hilir Perak
63	T063	40	3.957473163	100.9447838	PDT Hilir Perak
64	T064	40	3.957622178	100.944731	PDT Hilir Perak
65	T065	40	3.957788402	100.9446775	PDT Hilir Perak
66	T066	40	3.95797612	100.9446093	PDT Hilir Perak
67	T067	40	3.958151265	100.9445662	PDT Hilir Perak
68	T068	40	3.958338651	100.9444989	PDT Hilir Perak
69	T069	40	3.958547294	100.9444251	PDT Hilir Perak
70	T070	40	3.958743223	100.9443601	PDT Hilir Perak
71	T071	40	3.958970733	100.9442924	PDT Hilir Perak
72	T072	40	3.959183644	100.9442244	PDT Hilir Perak
73	T073	40	3.959382798	100.9441483	PDT Hilir Perak
74	T074	40	3.959560705	100.9441087	PDT Hilir Perak
75	T075	40	3.959751335	100.9440352	PDT Hilir Perak
76	T076	40	3.959892784	100.9439843	PDT Hilir Perak
77	T077	40	3.95983167	100.9437601	PDT Hilir Perak
78	T078	40	3.959630249	100.9435668	PDT Hilir Perak
79	T079	40	3.959428166	100.9433711	PDT Hilir Perak
80	T080	40	3.959214889	100.9431728	PDT Hilir Perak
81	T081	40	3.958994433	100.9429718	PDT Hilir Perak
82	T082	40	3.958783744	100.9427723	PDT Hilir Perak
83	T083	40	3.958575973	100.942586	PDT Hilir Perak
84	T084	40	3.958361593	100.9423877	PDT Hilir Perak

3.0 PROPOSED NEW POLE

Proposed New Pole Coordinate					
No.	Pole Number	Distance (m)	Latitude	Longitude	Local Authority
85	T085	40	3.958152057	100.9421941	PDT Hilir Perak
86	T086	40	3.957937248	100.9419958	PDT Hilir Perak
87	T087	40	3.957708612	100.9418103	PDT Hilir Perak
88	T088	40	3.957450237	100.9415831	PDT Hilir Perak
89	T089	40	3.960074148	100.9439112	PDT Hilir Perak
90	T090	40	3.960255335	100.9438496	PDT Hilir Perak
91	T091	40	3.960433996	100.9437837	PDT Hilir Perak
92	T092	40	3.960621329	100.9437273	PDT Hilir Perak
93	T093	40	3.960803361	100.9436671	PDT Hilir Perak
94	T094	40	3.960986118	100.9436002	PDT Hilir Perak
95	T095	40	3.961174932	100.9435479	PDT Hilir Perak
96	T096	40	3.961307167	100.9438358	PDT Hilir Perak
97	T097	40	3.961411547	100.9441267	PDT Hilir Perak
98	T098	40	3.961548559	100.9444048	PDT Hilir Perak
99	T099	40	3.961331246	100.9434859	PDT Hilir Perak
100	T100	40	3.961546921	100.9434234	PDT Hilir Perak
101	T101	40	3.961747658	100.9433577	PDT Hilir Perak
102	T102	40	3.961937	100.9432887	PDT Hilir Perak
103	T103	40	3.962138967	100.9432271	PDT Hilir Perak
104	T104	40	3.962327887	100.9431507	PDT Hilir Perak
105	T105	40	3.962537719	100.9430729	PDT Hilir Perak
106	T106	40	3.962735298	100.9430035	PDT Hilir Perak
107	T107	40	3.962918045	100.9429345	PDT Hilir Perak
108	T108	40	3.963121622	100.9428616	PDT Hilir Perak
109	T109	40	3.963298657	100.9427802	PDT Hilir Perak
110	T110	40	3.963499492	100.9427074	PDT Hilir Perak
111	T111	40	3.963728328	100.9426292	PDT Hilir Perak

3.0 PROPOSED NEW POLE

Proposed New Pole Coordinate					
No.	Pole Number	Distance (m)	Latitude	Longitude	Local Authority
112	T112	40	3.963904084	100.9425573	PDT Hilir Perak
113	T113	40	3.964107094	100.9424745	PDT Hilir Perak
114	T114	40	3.964300096	100.9423896	PDT Hilir Perak
115	T115	40	3.964504993	100.9423232	PDT Hilir Perak
116	T116	40	3.964709873	100.9422353	PDT Hilir Perak
117	T117	40	3.964897695	100.9421595	PDT Hilir Perak
118	T118	40	3.965097204	100.9420806	PDT Hilir Perak
119	T119	40	3.965273625	100.9420288	PDT Hilir Perak
120	T120	40	3.965457896	100.9419575	PDT Hilir Perak
121	T121	40	3.965600285	100.9419062	PDT Hilir Perak
122	T122	40	3.965659245	100.9421744	PDT Hilir Perak
123	T123	40	3.965720061	100.9424663	PDT Hilir Perak
124	T124	40	3.965798859	100.9428058	PDT Hilir Perak
125	T125	40	3.965895522	100.9431566	PDT Hilir Perak
126	T126	40	3.965947265	100.9435263	PDT Hilir Perak
127	T127	40	3.966019812	100.9438861	PDT Hilir Perak
128	T128	40	3.966085978	100.9442493	PDT Hilir Perak
129	T129	40	3.966143677	100.9445916	PDT Hilir Perak
130	T130	40	3.966213507	100.9449294	PDT Hilir Perak
131	T131	40	3.966280404	100.9453036	PDT Hilir Perak
132	T132	40	3.966384346	100.9456599	PDT Hilir Perak
133	T133	40	3.966432509	100.9458729	PDT Hilir Perak
134	T134	40	3.96680177	100.9457807	PDT Hilir Perak
135	T135	40	3.96726182	100.9457208	PDT Hilir Perak
136	T136	40	3.967614295	100.9457101	PDT Hilir Perak
137	T137	40	3.967979553	100.9457035	PDT Hilir Perak
138	T138	40	3.968356463	100.9456692	PDT Hilir Perak
139	T139	40	3.968725663	100.9456251	PDT Hilir Perak
140	T140	40	3.969090387	100.9456359	PDT Hilir Perak
141	T141	40	3.969463069	100.9456074	PDT Hilir Perak
142	T142	40	3.969816846	100.94556	PDT Hilir Perak
143	T143	40	3.970061066	100.9456291	PDT Hilir Perak
144	T144	40	3.970393739	100.9457599	PDT Hilir Perak

3.0 PROPOSED NEW POLE

Proposed New Pole Coordinate					
No.	Pole Number	Distance (m)	Latitude	Longitude	Local Authority
145	T145	40	3.97073043	100.9458999	PDT Hilir Perak
146	T146	40	3.971044638	100.9460568	PDT Hilir Perak
147	T147	40	3.971351442	100.9461855	PDT Hilir Perak
148	T148	40	3.971704653	100.9462626	PDT Hilir Perak
149	T149	40	3.971775485	100.945963	PDT Hilir Perak
15	T150	40	3.971643022	100.9458121	PDT Hilir Perak
151	T151	40	3.971658063	100.9456905	PDT Hilir Perak
152	T152	40	3.971787748	100.9454409	PDT Hilir Perak
153	T153	40	3.971909027	100.9451888	PDT Hilir Perak
154	T154	40	3.972020611	100.9449442	PDT Hilir Perak
155	T155	40	3.972150744	100.9447057	PDT Hilir Perak
156	T156	40	3.972281789	100.9444482	PDT Hilir Perak
157	T157	40	3.972400865	100.9442114	PDT Hilir Perak
158	T158	40	3.972522759	100.9439658	PDT Hilir Perak
159	T159	40	3.972649475	100.9437396	PDT Hilir Perak
160	T160	40	3.972780634	100.943478	PDT Hilir Perak
161	T161	40	3.972905187	100.9432415	PDT Hilir Perak
162	T162	40	3.973024669	100.9430051	PDT Hilir Perak
163	T163	40	3.973157753	100.9427647	PDT Hilir Perak
164	T164	40	3.973273249	100.9425307	PDT Hilir Perak
165	T165	40	3.973398423	100.9422915	PDT Hilir Perak
166	T166	40	3.973517443	100.9420482	PDT Hilir Perak
167	T167	40	3.97362342	100.9417934	PDT Hilir Perak
168	T168	40	3.965831724	100.9418325	PDT Hilir Perak
169	T169	40	3.966080348	100.941717	PDT Hilir Perak
170	T170	40	3.966278451	100.9416528	PDT Hilir Perak
171	T171	40	3.966438534	100.9415858	PDT Hilir Perak
172	T172	40	3.966625354	100.941522	PDT Hilir Perak
173	T173	40	3.966815446	100.9414479	PDT Hilir Perak
174	T174	40	3.967010929	100.9413806	PDT Hilir Perak
175	T175	40	3.967203155	100.941309	PDT Hilir Perak
176	T176	40	3.967421879	100.9412325	PDT Hilir Perak
177	T177	40	3.967644126	100.9411654	PDT Hilir Perak

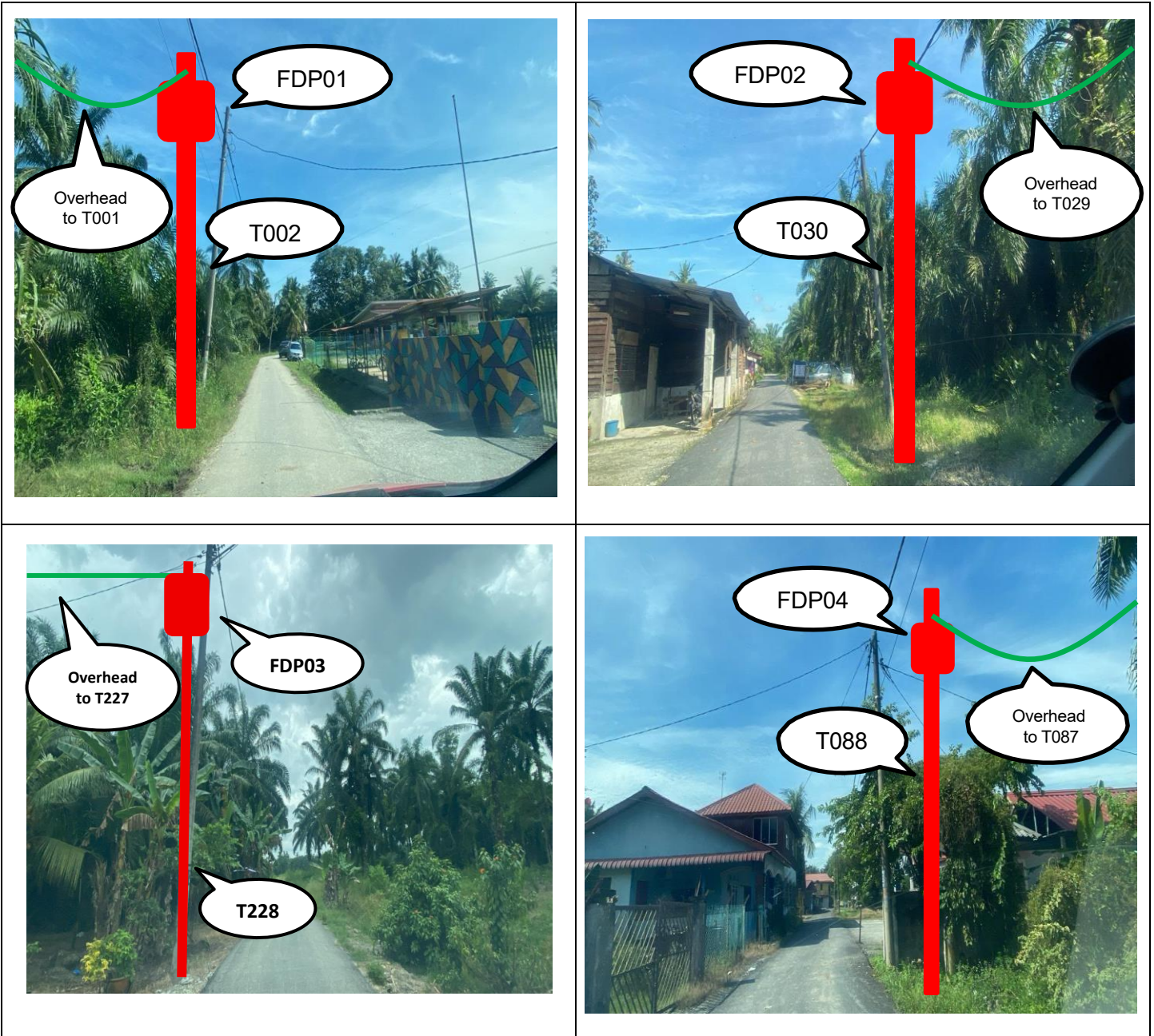
3.0 PROPOSED NEW POLE

Proposed New Pole Coordinate					
No.	Pole Number	Distance (m)	Latitude	Longitude	Local Authority
178	T178	40	3.967830085	100.9410835	PDT Hilir Perak
179	T179	40	3.968015141	100.9410046	PDT Hilir Perak
180	T180	40	3.968249077	100.9409262	PDT Hilir Perak
181	T181	40	3.968495811	100.9408404	PDT Hilir Perak
182	T182	40	3.968697491	100.9407641	PDT Hilir Perak
183	T183	40	3.968868786	100.9406854	PDT Hilir Perak
184	T184	40	3.969066681	100.9406209	PDT Hilir Perak
185	T185	40	3.969247958	100.9405572	PDT Hilir Perak
186	T186	40	3.969423087	100.9404822	PDT Hilir Perak
187	T187	40	3.969616227	100.940417	PDT Hilir Perak
188	T188	40	3.96978986	100.9403486	PDT Hilir Perak
189	T189	40	3.969957154	100.9402757	PDT Hilir Perak
190	T190	40	3.97015998	100.9402107	PDT Hilir Perak
191	T191	40	3.970345483	100.9401372	PDT Hilir Perak
192	T192	40	3.970506571	100.940077	PDT Hilir Perak
193	T193	40	3.97073439	100.9399859	PDT Hilir Perak
194	T194	40	3.97092263	100.9399108	PDT Hilir Perak
195	T195	40	3.971009373	100.9397871	PDT Hilir Perak
196	T196	40	3.971086005	100.9396265	PDT Hilir Perak
197	T197	40	3.971151927	100.9394862	PDT Hilir Perak
198	T198	40	3.971220222	100.9393539	PDT Hilir Perak
199	T199	40	3.971119111	100.9392721	PDT Hilir Perak
200	T200	40	3.971036374	100.9391798	PDT Hilir Perak
201	T201	40	3.970910051	100.9391093	PDT Hilir Perak
202	T202	40	3.967504997	100.9364263	PDT Hilir Perak
203	T203	40	3.967282991	100.936305	PDT Hilir Perak
204	T204	40	3.967090535	100.9362044	PDT Hilir Perak
205	T205	40	3.966869918	100.9360828	PDT Hilir Perak
206	T206	40	3.966684974	100.9359856	PDT Hilir Perak
207	T207	40	3.966498444	100.9358803	PDT Hilir Perak
208	T208	40	3.966320832	100.9357839	PDT Hilir Perak
209	T209	40	3.966119202	100.9356463	PDT Hilir Perak
210	T210	40	3.965935943	100.9355515	PDT Hilir Perak

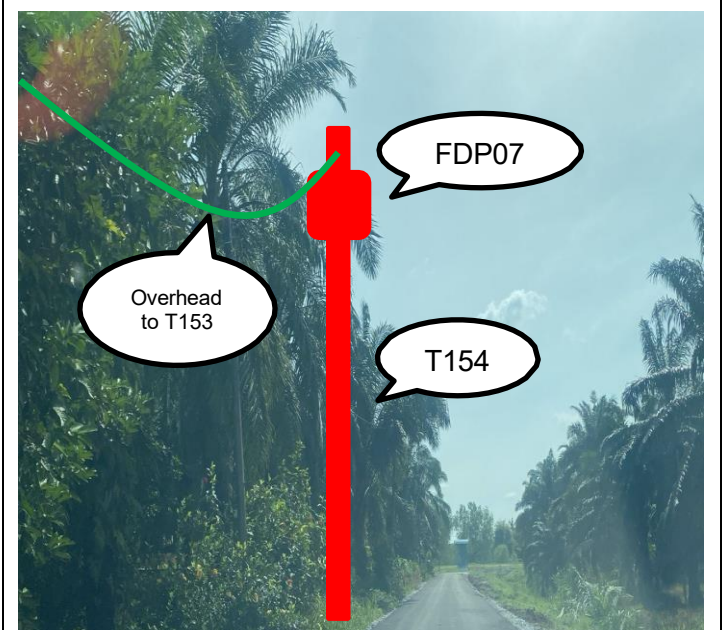
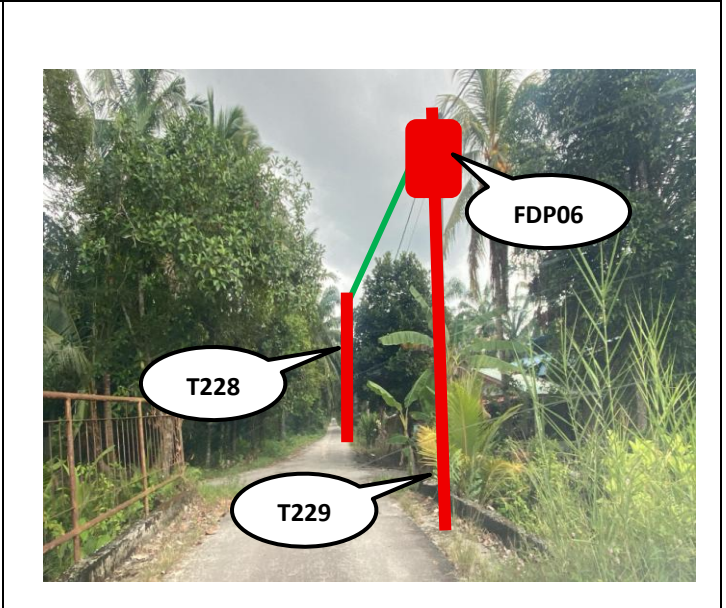
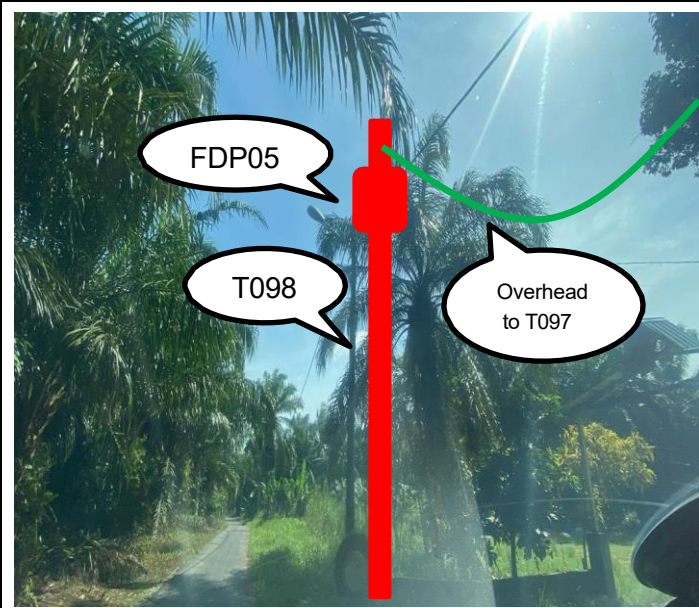
3.0 PROPOSED NEW POLE

Proposed New Pole Coordinate					
No.	Pole Number	Distance (m)	Latitude	Longitude	Local Authority
211	T211	40	3.965723508	100.9354383	PDT Hilir Perak
212	T212	40	3.965530556	100.9353401	PDT Hilir Perak
213	T213	40	3.96544031	100.9352862	PDT Hilir Perak
214	T214	40	3.965567498	100.9351165	PDT Hilir Perak
215	T215	40	3.96566853	100.9349377	PDT Hilir Perak
216	T216	40	3.965760358	100.9347712	PDT Hilir Perak
217	T217	40	3.965850552	100.9345764	PDT Hilir Perak
218	T218	40	3.965944189	100.9343981	PDT Hilir Perak
219	T219	40	3.966021875	100.9342226	PDT Hilir Perak
220	T220	40	3.966095436	100.934042	PDT Hilir Perak
221	T221	40	3.966139173	100.9338538	PDT Hilir Perak
222	T222	40	3.96617474	100.9336546	PDT Hilir Perak
223	T223	40	3.966212675	100.9334548	PDT Hilir Perak
224	T224	40	3.966259602	100.9332571	PDT Hilir Perak
225	T225	40	3.966304986	100.9330628	PDT Hilir Perak
226	T226	40	3.966340556	100.932855	PDT Hilir Perak
227	T227	40	3.966377621	100.932664	PDT Hilir Perak
228	T228	40	3.966407963	100.9324705	PDT Hilir Perak
229	T229	40	3.966441189	100.9322727	PDT Hilir Perak
230	T230	40	3.96648224	100.9320725	PDT Hilir Perak
231	T231	40	3.966510929	100.9318718	PDT Hilir Perak
232	T232	40	3.96654011	100.9316739	PDT Hilir Perak
233	T233	40	3.966598263	100.93148	PDT Hilir Perak
234	T234	40	3.966653694	100.9312792	PDT Hilir Perak
235	T235	40	3.966715949	100.9310869	PDT Hilir Perak
236	T236	40	3.966762928	100.9308988	PDT Hilir Perak
237	T237	40	3.96681412	100.9307051	PDT Hilir Perak
238	T238	40	3.96687651	100.9305117	PDT Hilir Perak
239	T239	40	3.966930132	100.9303192	PDT Hilir Perak
240	T240	40	3.966972193	100.9301274	PDT Hilir Perak
241	T241	40	3.967032141	100.929929	PDT Hilir Perak
242	T242	40	3.967088529	100.9297088	PDT Hilir Perak

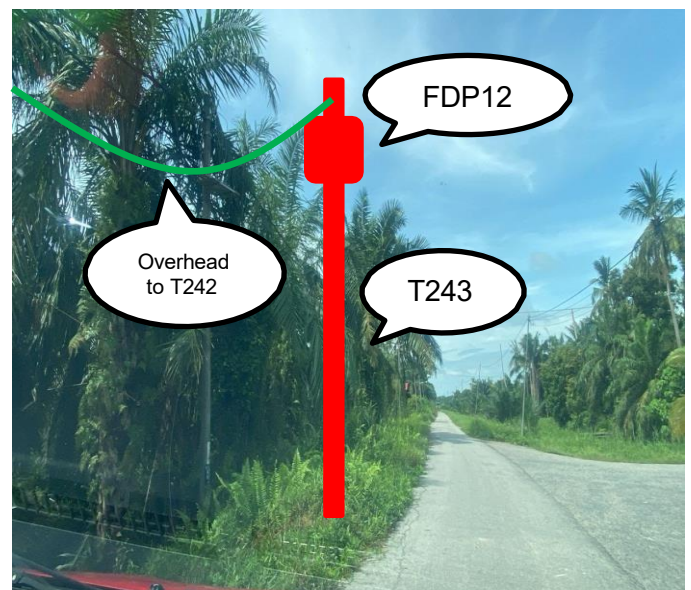
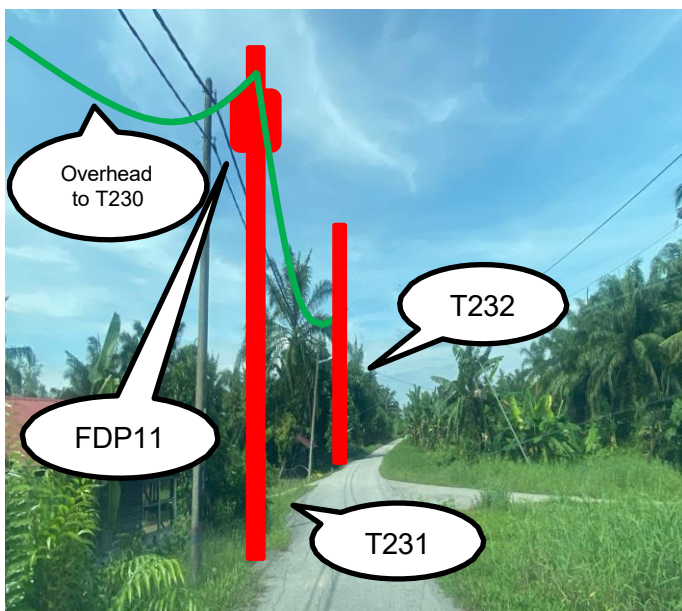
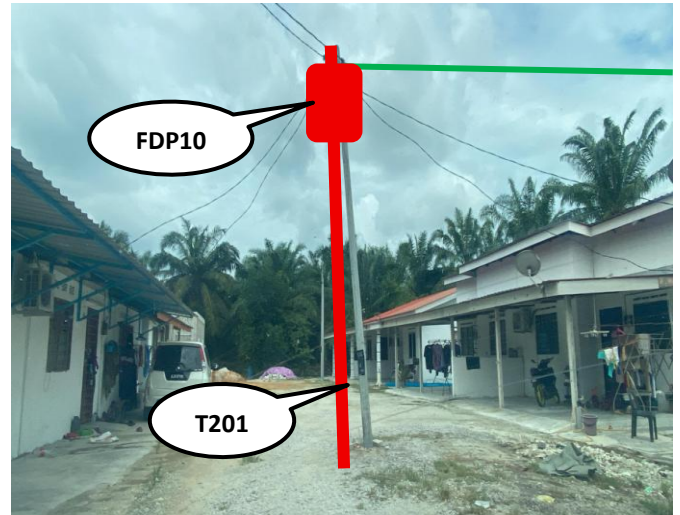
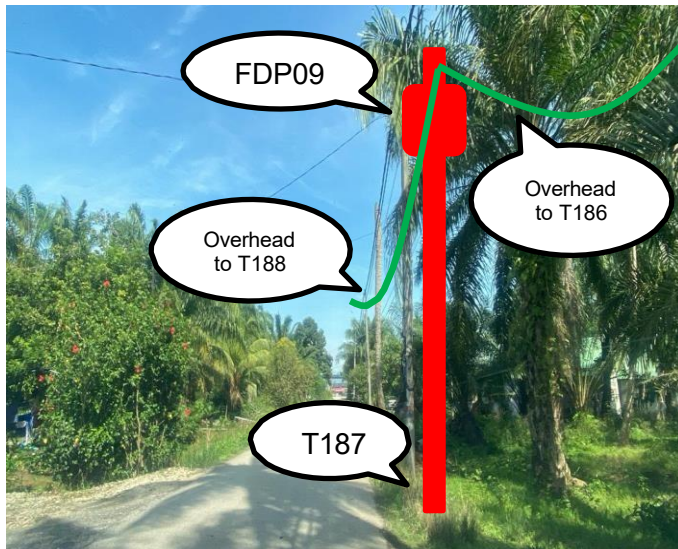
4.0 SITE PHOTOS - PROPOSED NEW POLE



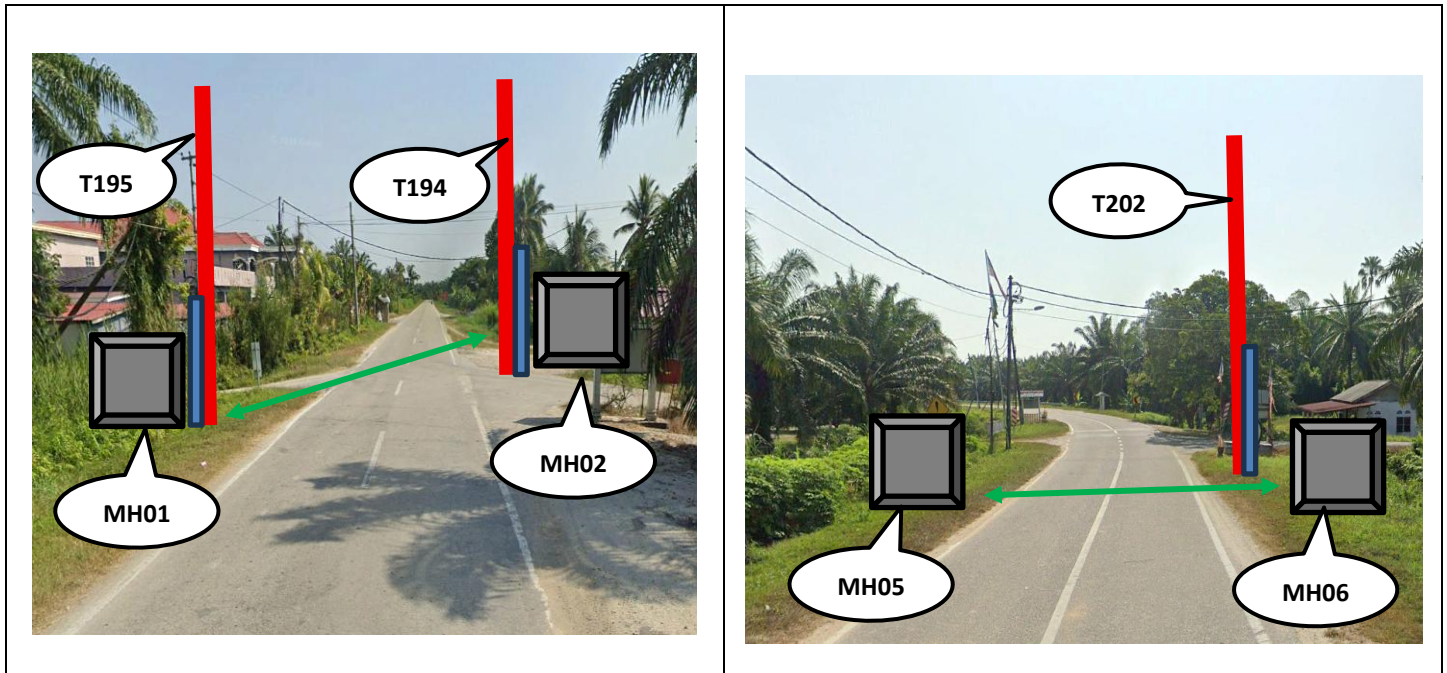
4.0 SITE PHOTOS - PROPOSED NEW POLE





4.0 SITE PHOTOS - PROPOSED NEW POLE



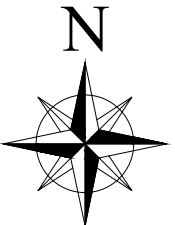
4.0 SITE PHOTOS - PROPOSED NEW POLE



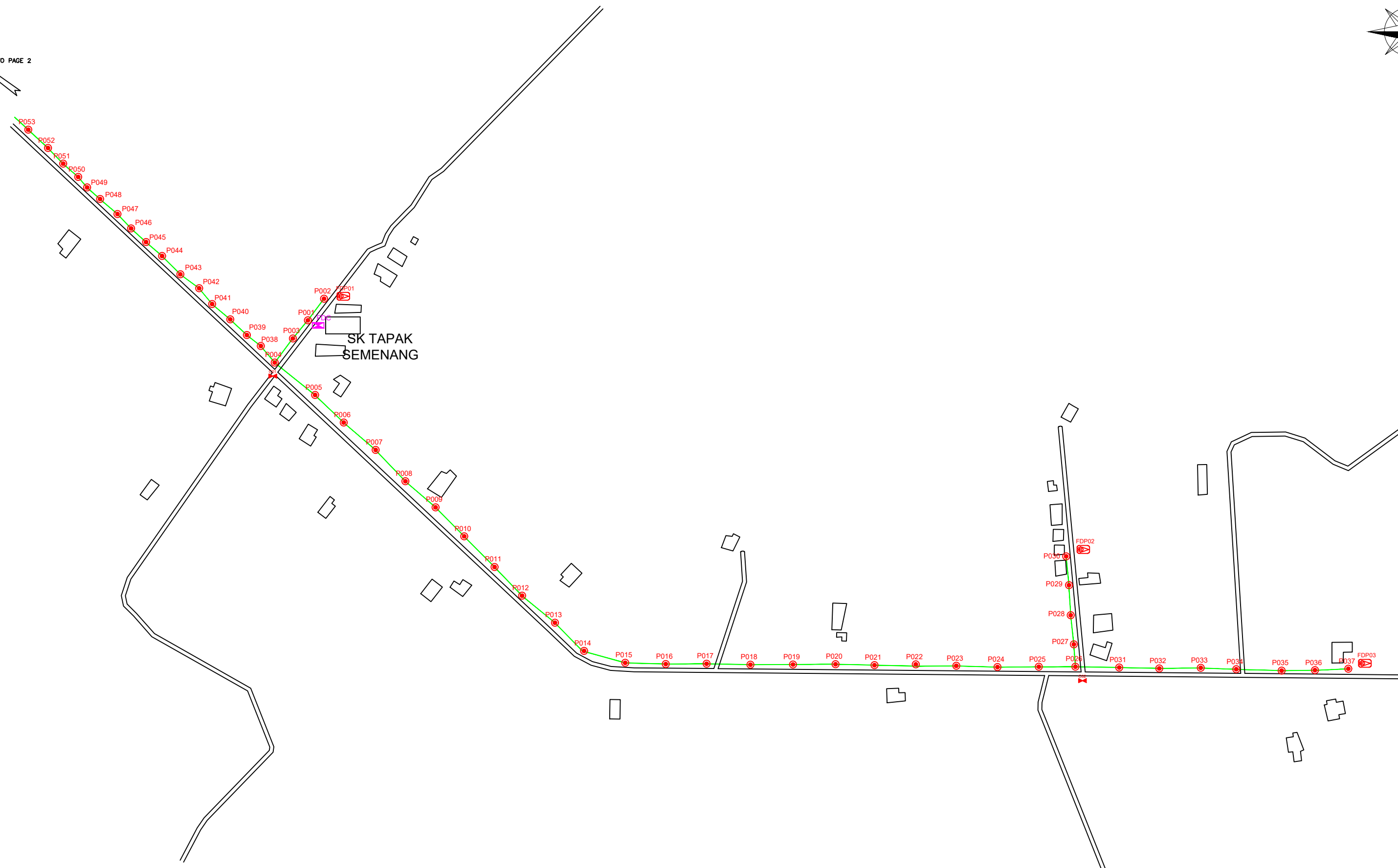
	<p>PROJEK PENYEDIAAN DAN PENYELENGGARAAN POINT OF PRESENCE (POP) FASA 2: HAB INFRASTRUKTUR GENTIAN OPTIK BERHAMPIRAN DENGAN SEKOLAH, KAWASAN PERINDUSTRIAN, PREMIS KERAJAAN DAN KOMUNITI SEKITARNYA OLEH KEMENTERIAN KOMUNIKASI MALAYSIA – ZON UTARA (KKMM.400-11/17/132(1))</p>	
--	--	--

5.0 3rd PARTIES DEPENDENCIES

NO	LOCAL COUNCIL / AUTHORITY	REMARK
1	PDT Hilir Perak	10,000M
2	JKR Hilir Perak	650M



TO PAGE 2



LEGEND

	12C FOC		Installed 1:4 splitter in FDC		INSTALLED POLE (9M)		NEW MANHOLE		TS / TB TENSION SMALL / TENSION BIG		MH1 MH NO.
	24C FOC		FDP		INSTALLED RISER		EXISTING MANHOLE		TKS-1 EXISTING TNB POLE NO.		P001 NEW POLE NO.
	48C FOC		CLOSURE		SUSPENSION BIG		EXISTING ALLO POLE		CP1 CLOSURE NO.		FDP1 FDP NO.
	90C FOC		NEW MANHOLE (PT)		SUSPENSION SMALL		LOOP		FDC FDC NO.		FDP2 FDP NO.
	144C FOC		INSTALLED POLE		FDC		FDP BOUNDARY				FDP3 FDP NO.

KEY PLAN

PROJECT OWNER

MAIN CONTRACTOR

SUB-CONTRACTOR

KNZ ENGINEERING SDN BHD
 NO. 60 & 60A, Jalan Klebang Indah 1, Medan Klebang Indah, 30100 Ipoh, Perak
 No Tel: 019-3695071
 Email: admin@knzengineering.com.my
 Website: www.knzengineering.com.my

PROJECT TITLE

SEKOLAH KEBANGSAAN TAPAK SEMENANG

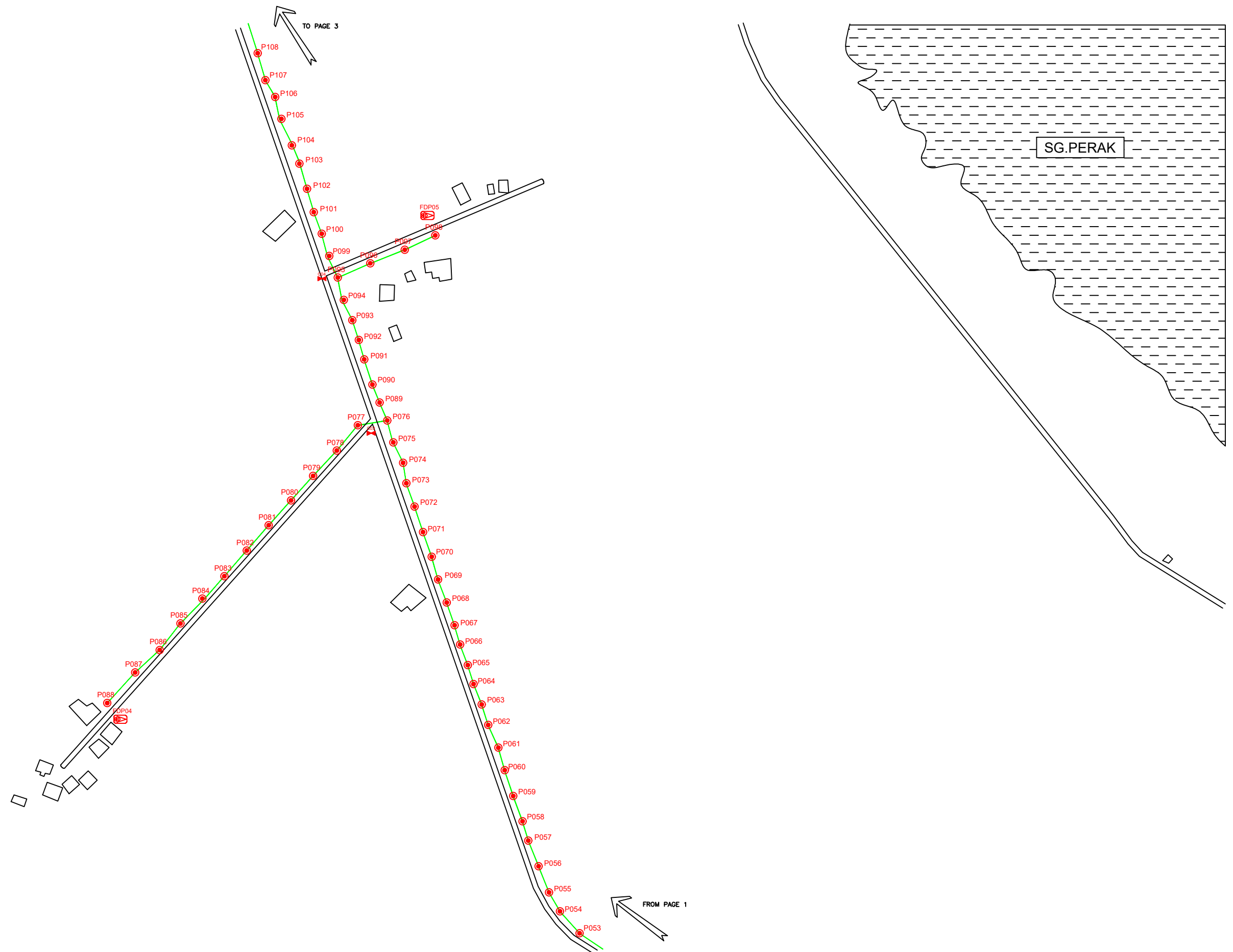
DRAWING TITLE

TP DRAWING POP 2 AT SEKOLAH KEBANGSAAN TAPAK SEMENANG

PROJECT PHASE

PROJECT PHASE 2

DESIGN BY	NABIL	DATE	11/06/2025
DRAWN BY	NABIL	SCALE	NOT TO SCALE
CHECKED BY	AZHAN HARIS	JOB NUMBER	ABAB001
DRAWING NUMBER		ABAB001	
THIS PRINT AND ITS COPYRIGHT ARE THE PROPERTY OF KNZ ENGINEERING SDN. BHD.		1/6	
		A3	



TO PAGE 3

FROM PAGE 1

SG.PERAK

LEGEND						
12C FOC	Installed 1:4 splitter in FDC	INSTALLED POLE (9M)	NEW MANHOLE	TENSION SMALL / TENSION BIG	MH1	MH NO.
24C FOC	FDP	INSTALLED RISER	HOUSE NUMBER	EXISTING MANHOLE	TKS-1	EXISTING TNB POLE NO.
48C FOC	CLOSURE	SUSPENSION BIG	EXISTING ALLO POLE	CLOSURE NO.	P001	NEW POLE NO.
90C FOC	NEW MANHOLE (PT)	SUSPENSION SMALL	LOOP	FDP NO.	SEE A.A TO THIS DRAWING	SEE SHEET XXX
144C FOC	INSTALLED POLE	FDC	FDP BOUNDARY	FDC NO.		

KEY PLAN

PROJECT OWNER

MAIN CONTRACTOR

SUB-CONTRACTOR

KNZ ENGINEERING SDN BHD
 NO. 60 & 60A, Jalan Klebang Indah 1, Medan Klebang Indah, 30100 Ipoh, Perak
 No Tel: 019-3695071
 Email: admin@knzengineering.com.my
 Website: www.knzengineering.com.my

PROJECT TITLE

SEKOLAH KEBANGSAAN TAPAK SEMENANG

DRAWING TITLE

TP DRAWING POP 2 AT SEKOLAH KEBANGSAAN TAPAK SEMENANG

PROJECT PHASE

PROJECT PHASE 2

DESIGN BY	NABIL	DATE	11/06/2025
DRAWN BY	NABIL	SCALE	NOT TO SCALE
CHECKED BY	AZHAN HARIS	JOB NUMBER	ABAB001
DRAWING NUMBER		ABAB001	
THIS PRINT AND ITS COPYRIGHT ARE THE PROPERTY OF KNZ ENGINEERING SDN. BHD.		2/6	
		A3	



LEGEND	
	12C FOC
	24C FOC
	48C FOC
	90C FOC
	144C FOC
	Installed 1:4 splitter in FDC
	FDP
	CLOSURE
	NEW MANHOLE (PT)
	INSTALLED POLE
	INSTALLED POLE (9M)
	INSTALLED RISER
	SUSPENSION BIG
	SUSPENSION SMALL
	FDC
	NEW MANHOLE
	HOUSE NUMBER
	EXISTING ALLO POLE
	LOOP
	FDP BOUNDARY
	TENSION SMALL / TENSION BIG
	EXISTING MANHOLE
	CLOSURE NO.
	FDP NO.
	FDC NO.
	MH NO.
	EXISTING TNB POLE NO.
	NEW POLE NO.

KEY PLAN

PROJECT OWNER



KEPENTERIAN KOMUNIKASI DAN DIGITAL

MAIN CONTRACTOR




SUB-CONTRACTOR



KNZ ENGINEERING SDN BHD
 NO. 60 & 60A, Jalan Klebang Indah 1, Medan Klebang Indah, 30100 Ipoh, Perak
 No Tel: 019-3695071
 Email: admin@knzengineering.com.my
 Website: www.knzengineering.com.my

PROJECT TITLE

SEKOLAH KEBANGSAAN TAPAK SEMENANG

DRAWING TITLE

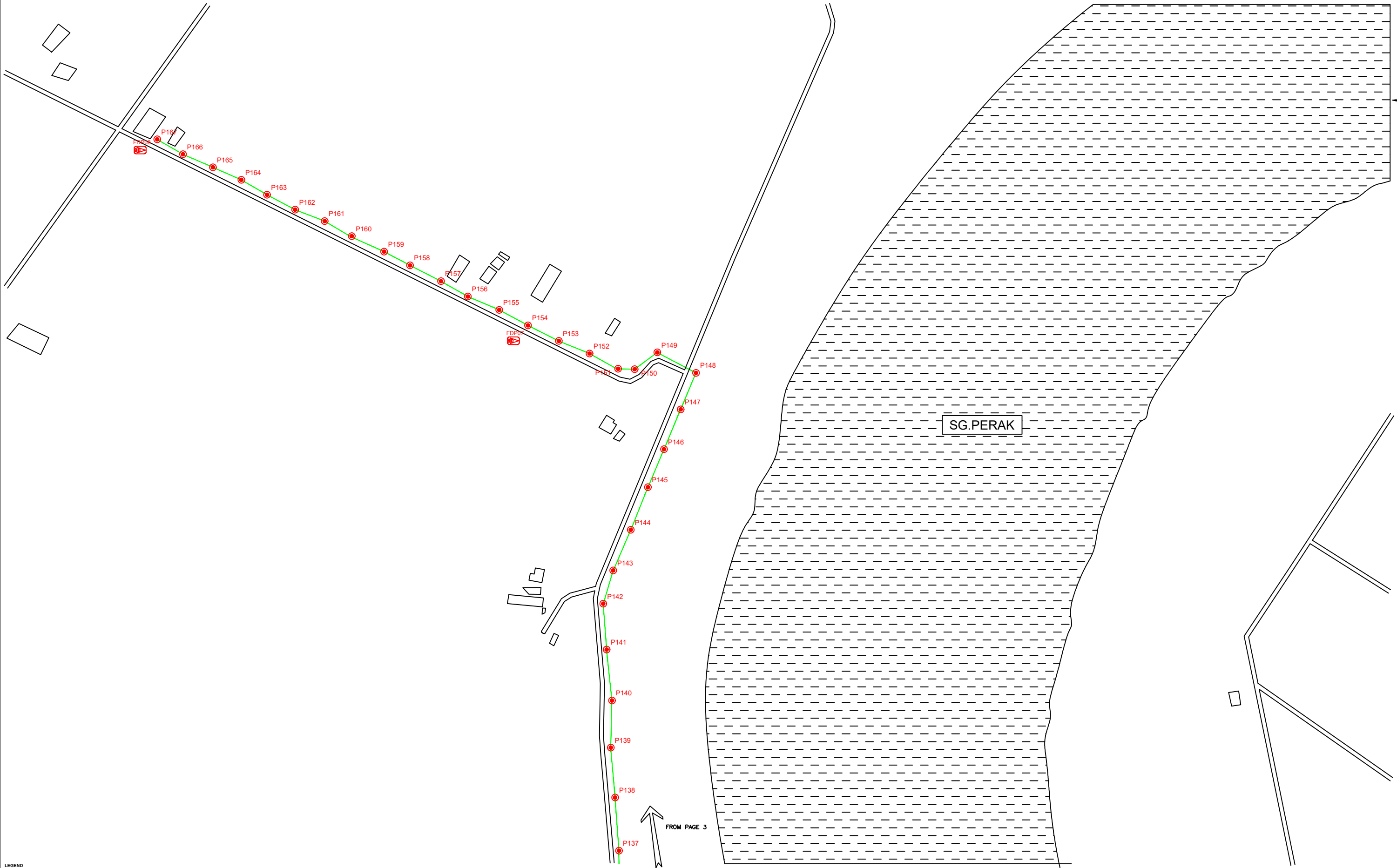
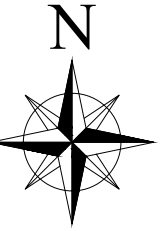
TP DRAWING POP 2 AT SEKOLAH KEBANGSAAN TAPAK SEMENANG

PROJECT PHASE

PROJECT PHASE 2

DESIGN BY	NABIL	DATE	11/06/2025
DRAWN BY	NABIL	SCALE	NOT TO SCALE
CHECKED BY	AZHAN HARIS	JOB NUMBER	ABAB001
DRAWING NUMBER		ABAB001	
THIS PRINT AND ITS COPYRIGHT ARE THE PROPERTY OF KNZ ENGINEERING SDN. BHD.		3/6	

A3



LEGEND	
	12C FOC
	24C FOC
	48C FOC
	90C FOC
	144C FOC
	Installed 1:4 splitter in FDC
	FDP
	CLOSURE
	NEW MANHOLE (PT)
	INSTALLED POLE
	INSTALLED POLE (9M)
	INSTALLED RISER
	SUSPENSION BIG
	SUSPENSION SMALL
	FDC
	NEW MANHOLE
	HOUSE NUMBER
	EXISTING ALLO POLE
	LOOP
	FDP BOUNDARY
	TENSION SMALL / TENSION BIG
	EXISTING MANHOLE
	CLOSURE NO.
	FDP NO.
	FDC NO.
	MH NO.
	EXISTING TNB POLE NO.
	NEW POLE NO.

KEY PLAN

KEPERHENTIAN KOMUNIKASI DAN DIGITAL

PROJECT OWNER

APEx COMMUNICATIONS SDN BHD

PRIVASAT

MAIN CONTRACTOR

KNZ Engineering

SUB-CONTRACTOR

KNZ ENGINEERING SDN BHD
 NO. 60 & 60A, Jalan Klebang Indah 1, Medan Klebang Indah, 30100 Ipoh, Perak
 No Tel: 019-3695071
 Email: admin@knzengineering.com.my
 Website: www.knzengineering.com.my

PROJECT TITLE

SEKOLAH KEBANGSAAN TAPAK SEMENANG

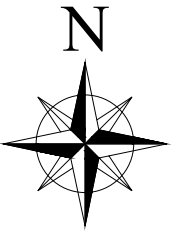
DRAWING TITLE

TP DRAWING POP 2 AT SEKOLAH KEBANGSAAN TAPAK SEMENANG

PROJECT PHASE

PROJECT PHASE 2

DESIGN BY	NABIL	DATE	11/06/2025
DRAWN BY	NABIL	SCALE	NOT TO SCALE
CHECKED BY	AZHAN HARIS	JOB NUMBER	ABAB001
DRAWING NUMBER		ABAB001	
THIS PRINT AND ITS COPYRIGHT ARE THE PROPERTY OF KNZ ENGINEERING SDN. BHD.		4/6	
		A3	



TO PAGE 6

FROM PAGE 3

LEGEND	
	12C FOC
	24C FOC
	48C FOC
	90C FOC
	144C FOC
	Installed 1:4 splitter in FDC
	FDP
	CLOSURE
	NEW MANHOLE (PT)
	INSTALLED POLE
	INSTALLED POLE (9M)
	INSTALLED RISER
	SUSPENSION BIG
	SUSPENSION SMALL
	FDC
	NEW MANHOLE
	HOUSE NUMBER
	EXISTING ALLO POLE
	LOOP
	FDP BOUNDARY
	TENSION SMALL / TENSION BIG
	EXISTING MANHOLE
	CLOSURE NO.
	FDP NO.
	FDC NO.
	MH NO.
	EXISTING TNB POLE NO.
	NEW POLE NO.

KEY PLAN

PROJECT OWNER

MAIN CONTRACTOR

SUB-CONTRACTOR

KNZ ENGINEERING SDN BHD
 NO. 60 & 60A, Jalan Klebang Indah 1, Medan Klebang Indah, 30100 Ipoh, Perak
 No Tel: 019-3695071
 Email: admin@knzengineering.com.my
 Website: www.knzengineering.com.my

PROJECT TITLE

SEKOLAH KEBANGSAAN TAPAK SEMENANG

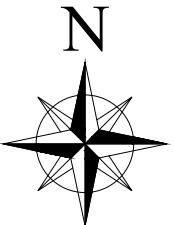
DRAWING TITLE

TP DRAWING POP 2 AT SEKOLAH KEBANGSAAN TAPAK SEMENANG

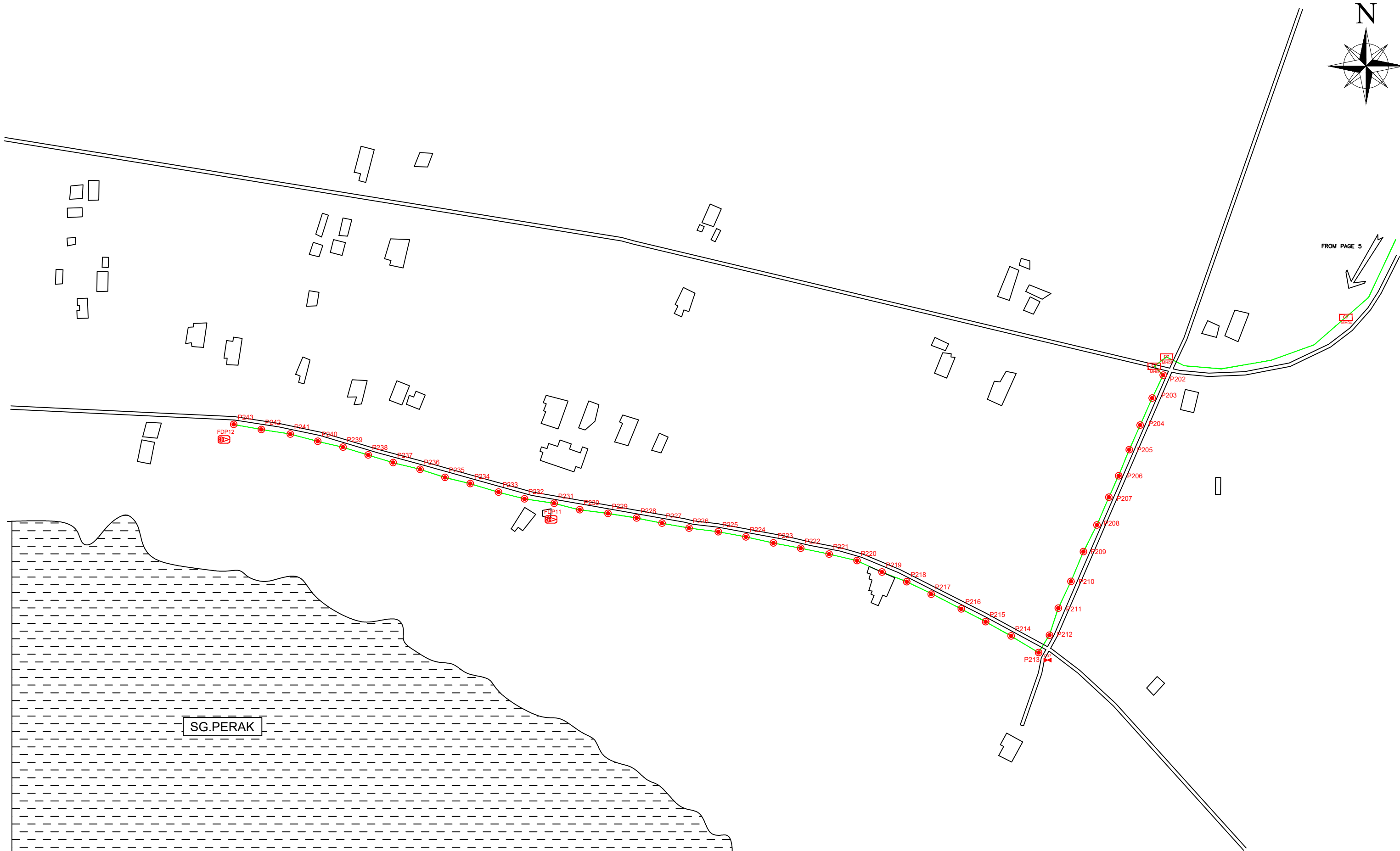
PROJECT PHASE

PROJECT PHASE 2

DESIGN BY	NABIL	DATE	11/06/2025
DRAWN BY	NABIL	SCALE	NOT TO SCALE
CHECKED BY	AZHAN HARIS	JOB NUMBER	ABAB001
DRAWING NUMBER		ABAB001	
THIS PRINT AND ITS COPYRIGHT ARE THE PROPERTY OF KNZ ENGINEERING SDN. BHD.		5/6	
		A3	



FROM PAGE 5



LEGEND

12C FOC	Installed 1:4 splitter in FDC	INSTALLED POLE (9M)	NEW MANHOLE	TS/TB TENSION SMALL / TENSION BIG	MH1 MH NO.
24C FOC	FDP	INSTALLED RISER	HOUSE NUMBER	EXISTING MANHOLE	TKS-1 EXISTING TNB POLE NO.
48C FOC	CLOSURE	SUSPENSION BIG	EXISTING ALLO POLE	C01 CLOSURE NO.	P001 NEW POLE NO.
90C FOC	NEW MANHOLE (PT)	SUSPENSION SMALL	LOOP	FDP1 FDP NO.	SEE SHEET KIK
144C FOC	INSTALLED POLE	FDC	FDP BOUNDARY	FDC FDC NO.	SEE SHEET KIK

KEY PLAN

PROJECT OWNER

MAIN CONTRACTOR

SUB-CONTRACTOR

KNZ ENGINEERING SDN BHD
 NO. 60 & 60A, Jalan Klebang Indah 1, Medan Klebang Indah, 30100 Ipoh, Perak
 No Tel: 019-3695071
 Email: admin@knzengineering.com.my
 Website: www.knzengineering.com.my

PROJECT TITLE

SEKOLAH KEBANGSAAN TAPAK SEMENANG

DRAWING TITLE

TP DRAWING POP 2 AT SEKOLAH KEBANGSAAN TAPAK SEMENANG

PROJECT PHASE

PROJECT PHASE 2

DESIGN BY	NABIL	DATE	11/06/2025
DRAWN BY	NABIL	SCALE	NOT TO SCALE
CHECKED BY	AZHAN HARIS	JOB NUMBER	ABAB001
DRAWING NUMBER		ABAB001	
THIS PRINT AND ITS COPYRIGHT ARE THE PROPERTY OF KNZ ENGINEERING SDN. BHD.		6/6	
		A3	