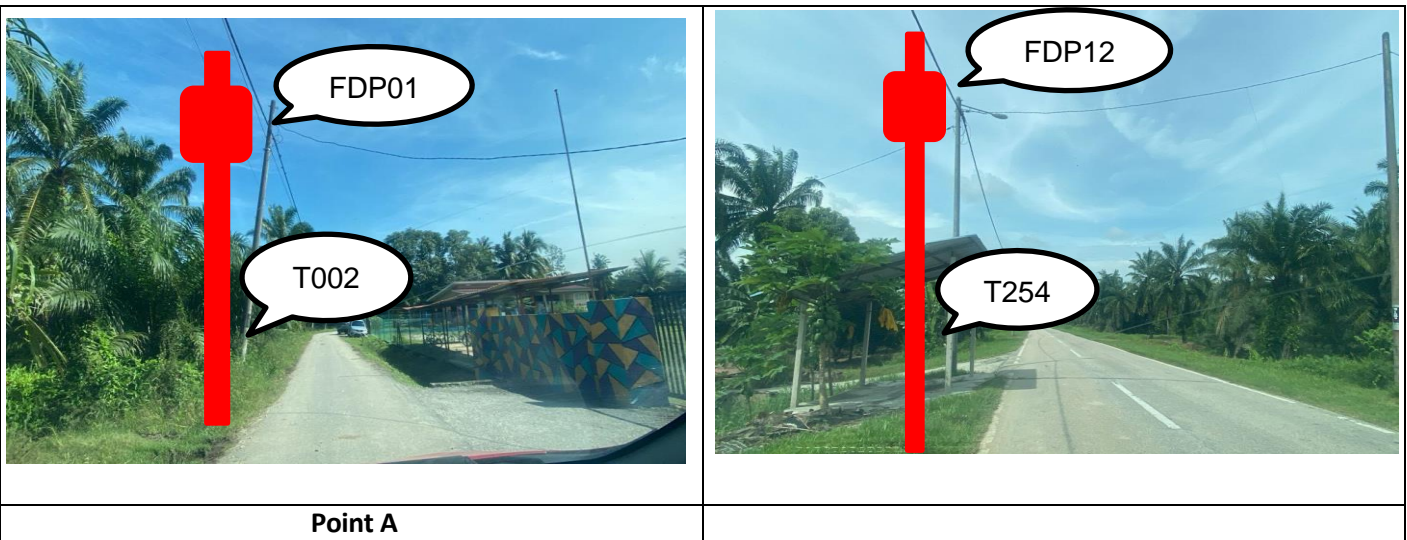


TECHNICAL PROPOSAL

POP2 ABAB001 SEKOLAH KEBANGSAAN TAPAK SEMENANG (D-SIDE)

Company Name : KNZ ENGINEERING SDN BHD.
Company Address : NO 60 & 60 A JALAN KLEBANG INDAH 1 MEDAN KLEBANG INDAH 30010 IPOH PERAK
Prepared By : FARHAH AFIQAH BINTI AMDON
Date : 26/12/2024



Starting Point

Site / Boundary Name : Teluk Intan
 Address : SK Tapak Semenang, Kampung Tapak Semenang, Mukim Teluk Bharu, 36000 Teluk Intan
 District : Teluk Intan
 Postcode : 36000
 State : Perak
 GPS Coordinate : 3.9538529181374, 100.948430106323
 LRD : A

End Point

Site / Boundary Name : Teluk Intan
 Address : Kampung Tanjung Sari, 36000 Teluk Intan, Perak
 District : Teluk Intan
 Postcode : 36000
 State : Perak
 GPS Coordinate : 3.96900383637919, 100.930098527945
 LRD : B



PROJEK PENYEDIAAN DAN PENYELENGGARAAN POINT OF PRESENCE (POP) FASA 2: HAB INFRASTRUKTUR GENTIAN OPTIK BERHAMPIRAN DENGAN SEKOLAH, KAWASAN PERINDUSTRIAN, PREMIS KERAJAAN DAN KOMUNITI SEKITARNYA OLEH KEMENTERIAN KOMUNIKASI MALAYSIA – ZON UTARA (KKMM.400-11/17/132(1))



1.0 WORK SUMMARY

NO	PROPOSED DISTANCE AND METHOD	UNIT	QUANTITY
1	Horizontal Directional Drilling (HDD)	m	180
2	Carriage Way Open Trench (CW)	m	0
3	Grass Verge Open Trenching (GV)	m	18
4	Micro Trenching (MT)	m	0
Total			180

NO	OTHER INFORMATION	UNIT	QUANTITY
1	Installation of Short Span ADSS Fibre Cables	m	11,000
2	Install New Pole	ea	254
3	Install New JRC7 Manhole	ea	6
4	Install GI Riser 100mm	ea	6
5	Install Fiber Distribution Point	ea	12
6	Install Closure	ea	7
7	Estimated Time Required for Completion	days	30

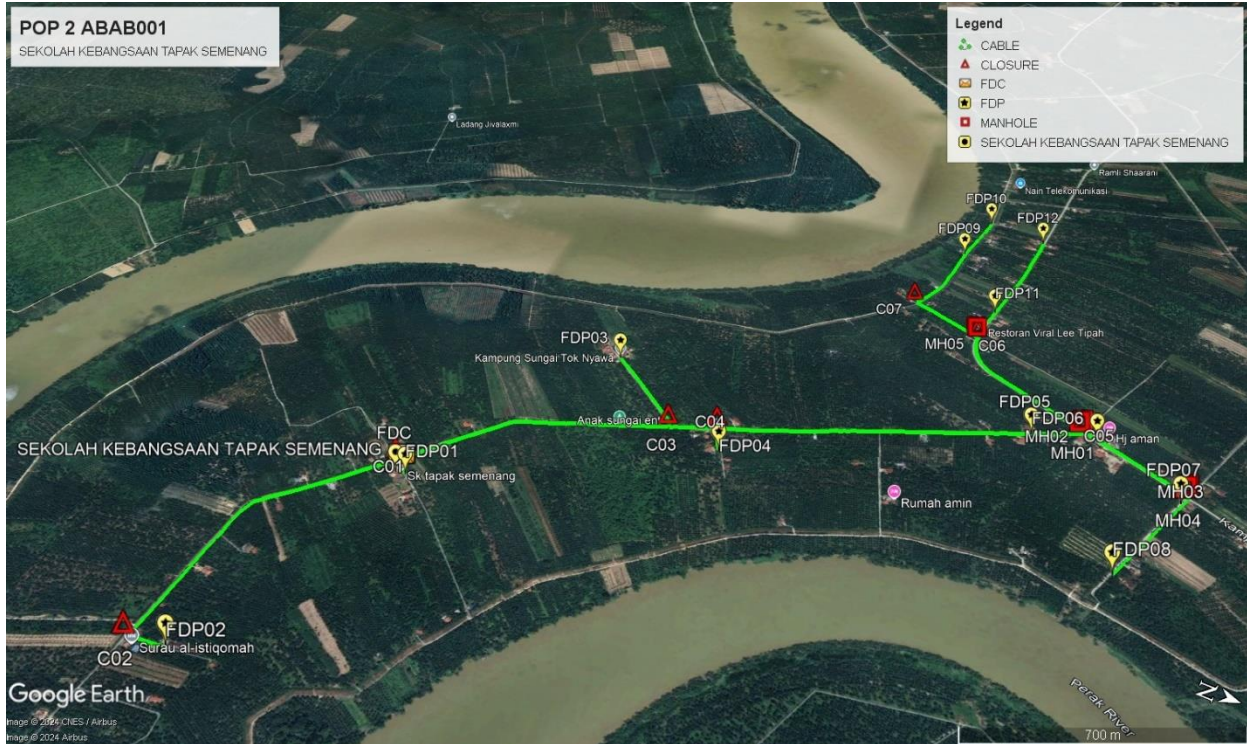
2.0 LOCAL AUTHORITY SUMMARY

Daerah Hilir Perak

Bil	Items	Owner	Quantity	Distance
1	HDD	JKR	3	180m
		Majlis	-	-
		Estate / Private Land	-	-
2	New Pole	JKR	56	2,240m
		Majlis	198	7,800m
		Estate / Private Land	-	-
3	Existing TNB Pole	JKR	-	-
		Majlis	-	-
		Estate / Private Land	-	-
Total				10,220m

Site Plan -KMZ (Overview site area)

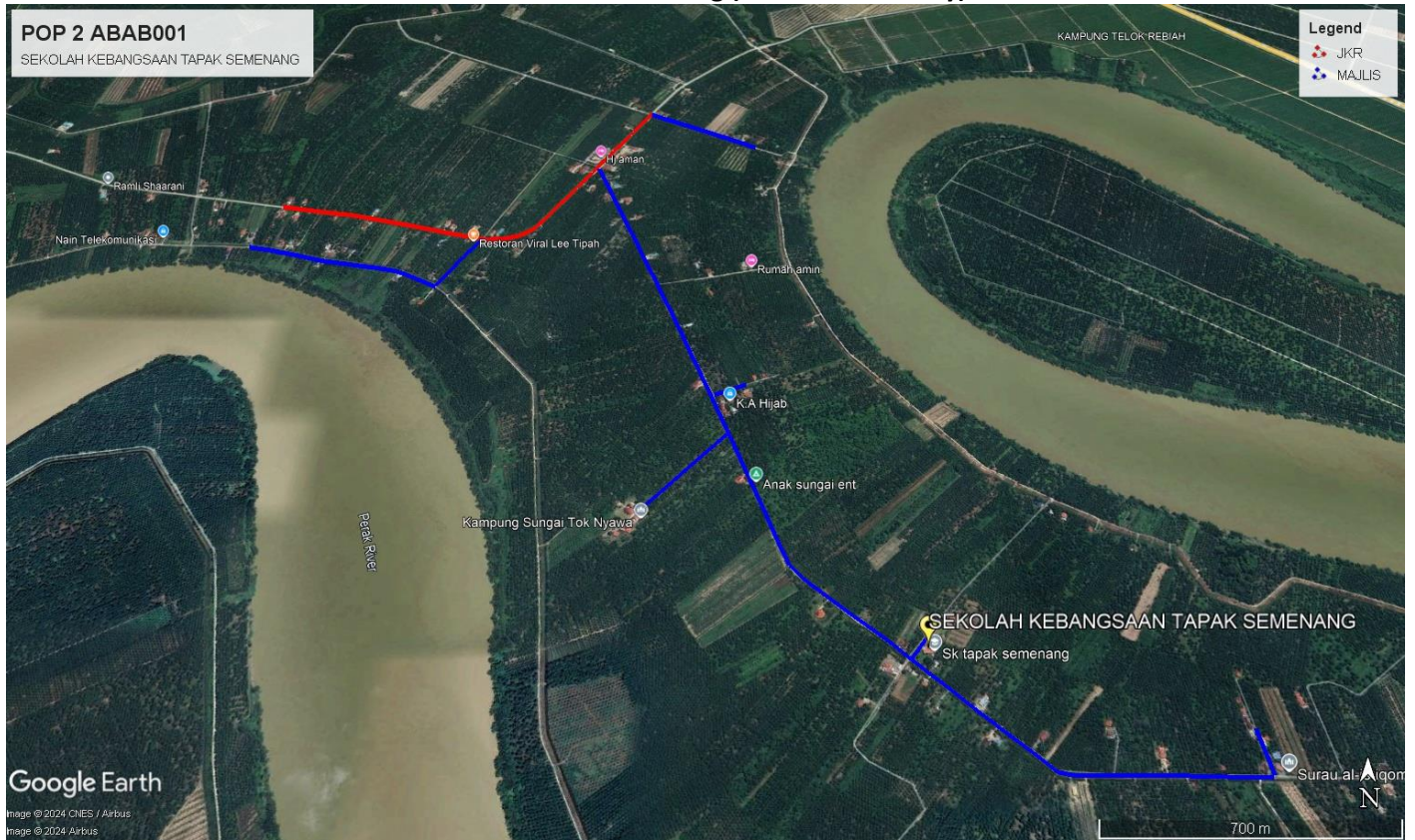
Proposed FDP and Closure



Proposed New Pole



Site Plan - KMZ Routing (All Local Authority)

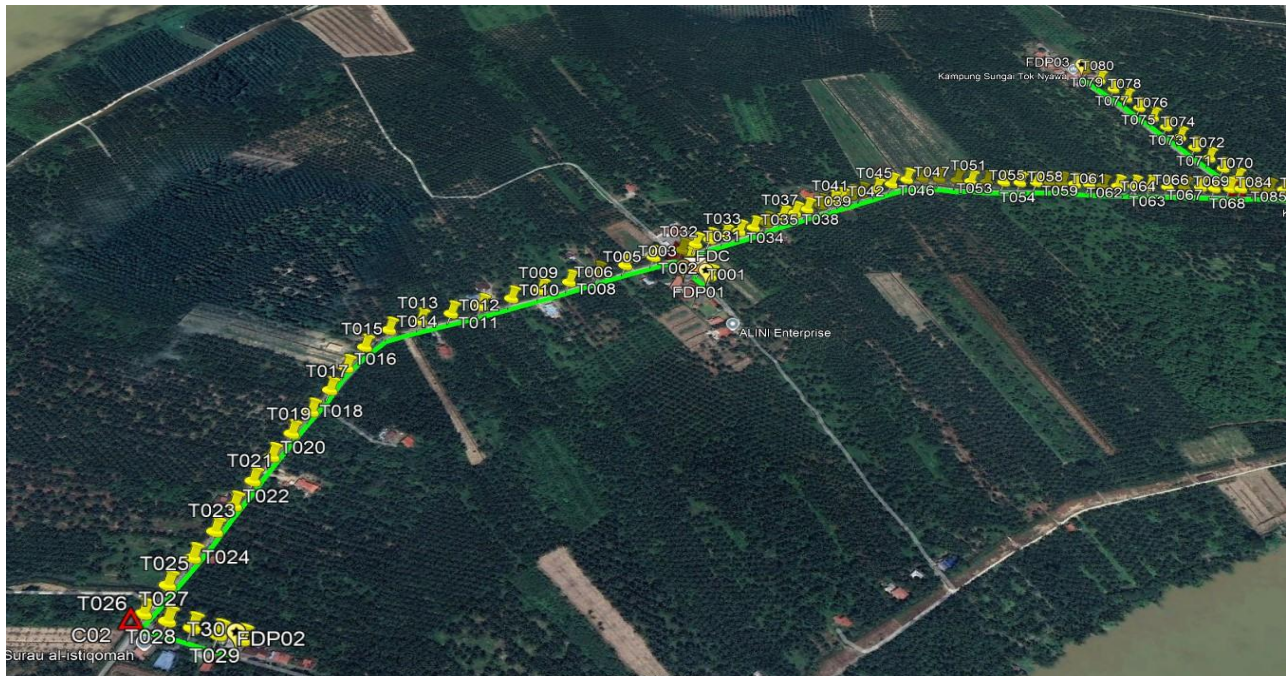
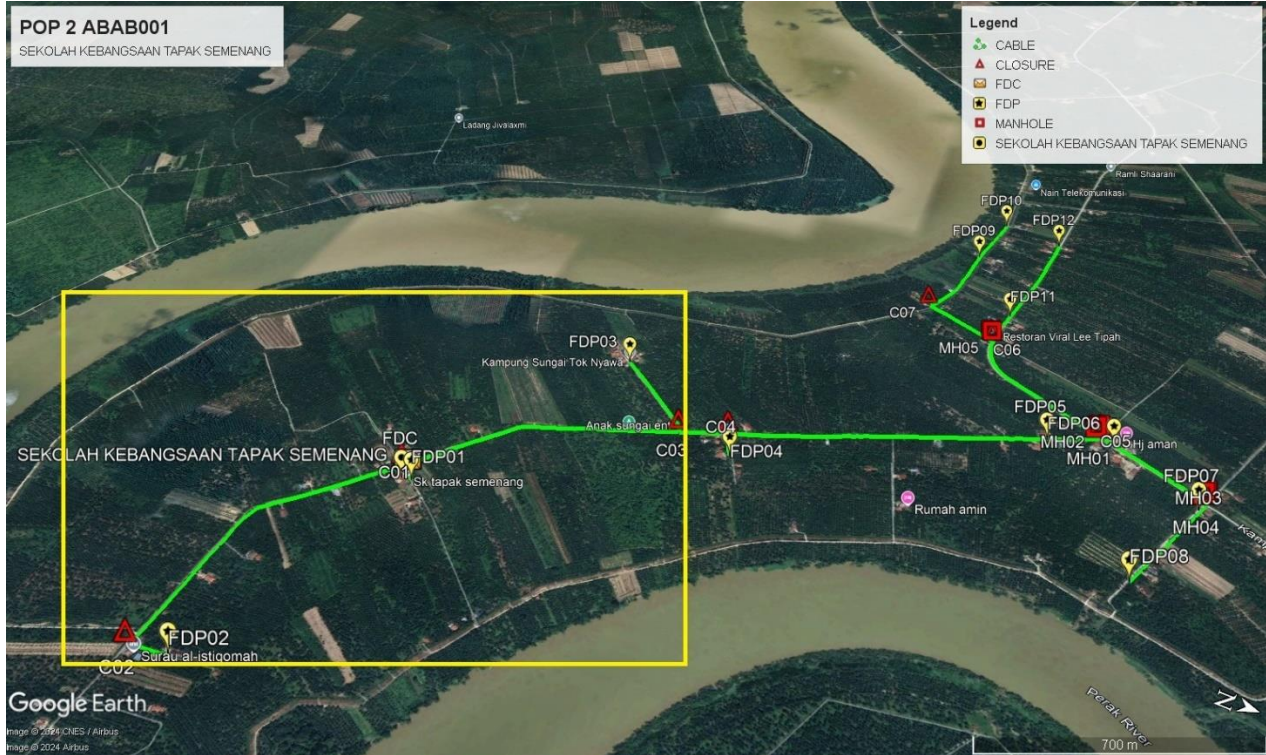


Red Colour – JKR Road

Blue Colour - Majlis Road

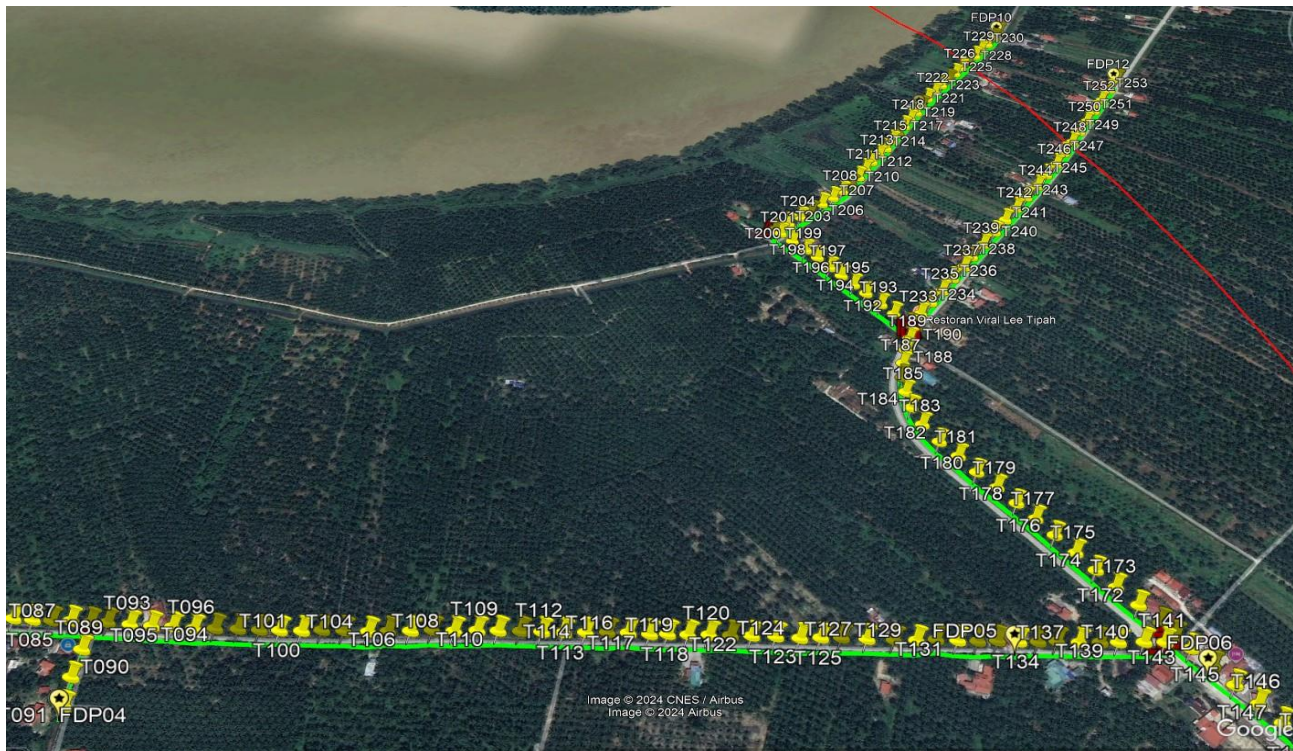
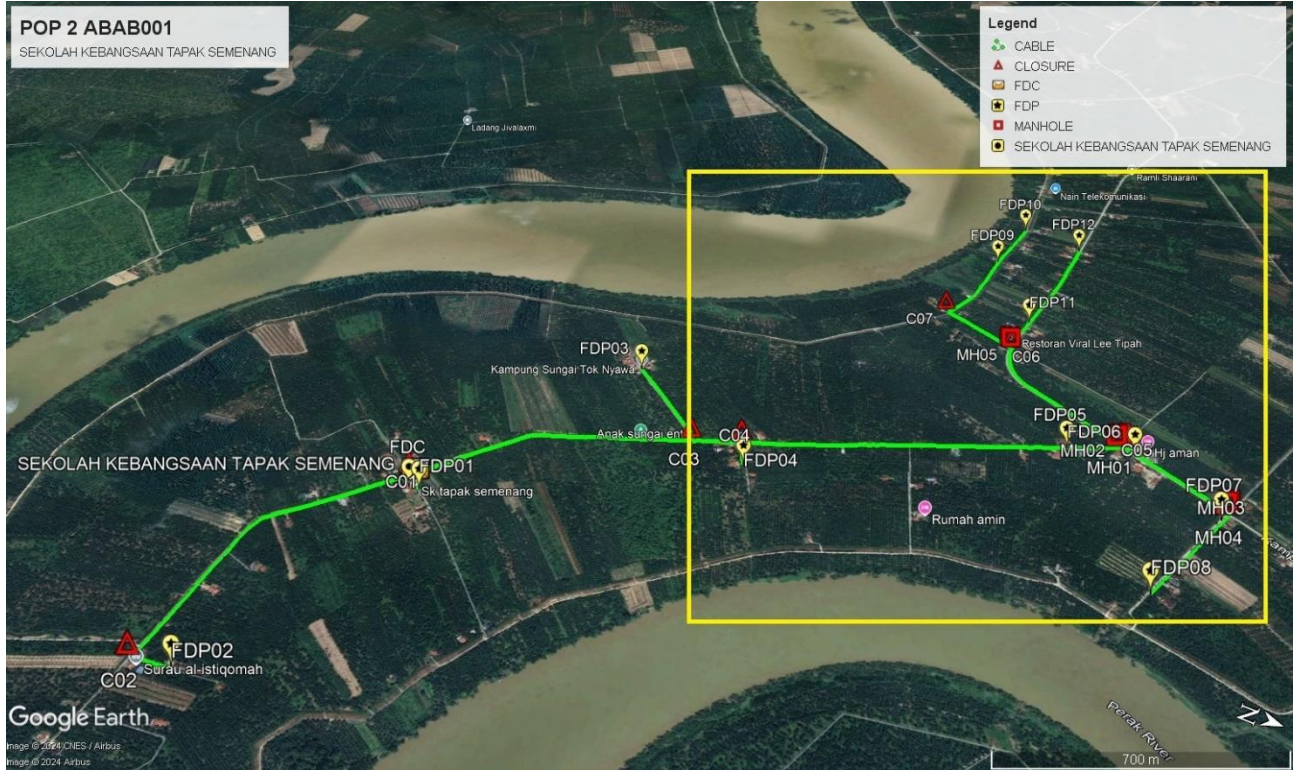
Site Plan – KMZ Routing (All site area)

Route 1



Route 1.1

Route 2



Route 2.1



Route 2.2

3.0 PROPOSED NEW POLE

Proposed New Pole Coordinate					
No.	Pole Number	Distance (m)	Latitude	Longitude	Local Authority
1	T001	40	3.95367309420081	100.948308764455	Majlis Perbandaran Teluk Intan
2	T002	40	3.9538529181374	100.948430106323	Majlis Perbandaran Teluk Intan
3	T003	40	3.95348559568969	100.948182717602	Majlis Perbandaran Teluk Intan
4	T004	40	3.95333103541812	100.948033734217	Majlis Perbandaran Teluk Intan
5	T005	40	3.95304919291358	100.948305830135	Majlis Perbandaran Teluk Intan
6	T006	40	3.952778639704	100.948601669894	Majlis Perbandaran Teluk Intan
7	T007	40	3.9525114798987	100.948886394636	Majlis Perbandaran Teluk Intan
8	T008	40	3.95224972217463	100.949167949555	Majlis Perbandaran Teluk Intan
9	T009	40	3.95198698151659	100.949448771116	Majlis Perbandaran Teluk Intan
10	T010	40	3.95172325794772	100.949739754906	Majlis Perbandaran Teluk Intan
11	T011	40	3.9514484939042	100.950022362576	Majlis Perbandaran Teluk Intan
12	T012	40	3.95117820998682	100.950292786207	Majlis Perbandaran Teluk Intan
13	T013	40	3.95090447739749	100.95056346327	Majlis Perbandaran Teluk Intan
14	T014	40	3.95062927049461	100.950846245253	Majlis Perbandaran Teluk Intan
15	T015	40	3.95051002073224	100.951220925064	Majlis Perbandaran Teluk Intan
16	T016	40	3.95048558695688	100.951611646081	Majlis Perbandaran Teluk Intan
17	T017	40	3.95049777601147	100.952007268094	Majlis Perbandaran Teluk Intan
18	T018	40	3.95048935642557	100.952399779446	Majlis Perbandaran Teluk Intan
19	T019	40	3.95047715387932	100.952789360961	Majlis Perbandaran Teluk Intan
20	T020	40	3.95047174946185	100.953182613214	Majlis Perbandaran Teluk Intan
21	T021	40	3.95047610877354	100.953565629791	Majlis Perbandaran Teluk Intan
22	T022	40	3.95048103502324	100.953940745285	Majlis Perbandaran Teluk Intan
23	T023	40	3.95049194902553	100.95431522417	Majlis Perbandaran Teluk Intan
24	T024	40	3.95048473851623	100.954697895975	Majlis Perbandaran Teluk Intan
25	T025	40	3.95046237466808	100.955094589671	Majlis Perbandaran Teluk Intan
26	T026	40	3.95045389704074	100.955485390305	Majlis Perbandaran Teluk Intan

3.0 PROPOSED NEW POLE

Proposed New Pole Coordinate					
No.	Pole Number	Distance (m)	Latitude	Longitude	Local Authority
27	T027	40	3.95073248261637	100.955477296512	Majlis Perbandaran Teluk Intan
28	T028	40	3.95100553887105	100.955455503223	Majlis Perbandaran Teluk Intan
29	T029	40	3.95128189325503	100.955432201599	Majlis Perbandaran Teluk Intan
30	T030	40	3.95152330895912	100.955396883565	Majlis Perbandaran Teluk Intan
31	T031	40	3.9534559174513	100.947859256877	Majlis Perbandaran Teluk Intan
32	T032	40	3.95359827547848	100.94770779746	Majlis Perbandaran Teluk Intan
33	T033	40	3.95374838304683	100.947561234334	Majlis Perbandaran Teluk Intan
34	T034	40	3.95389443047919	100.947401136006	Majlis Perbandaran Teluk Intan
35	T035	40	3.95404000166037	100.947248439087	Majlis Perbandaran Teluk Intan
36	T036	40	3.95416706355098	100.94708420034	Majlis Perbandaran Teluk Intan
37	T037	40	3.95431513766392	100.946863943255	Majlis Perbandaran Teluk Intan
38	T038	40	3.95444690804834	100.946730467018	Majlis Perbandaran Teluk Intan
39	T039	40	3.95457263820808	100.946586174103	Majlis Perbandaran Teluk Intan
40	T040	40	3.95471845260189	100.946434541044	Majlis Perbandaran Teluk Intan
41	T041	40	3.95484084891101	100.946310690579	Majlis Perbandaran Teluk Intan
42	T042	40	3.9549258998486	100.946205540415	Majlis Perbandaran Teluk Intan
43	T043	40	3.9550339019905	100.946083868631	Majlis Perbandaran Teluk Intan
44	T044	40	3.95515008565026	100.945986499512	Majlis Perbandaran Teluk Intan
45	T045	40	3.95531680008512	100.945815508338	Majlis Perbandaran Teluk Intan
46	T046	40	3.95547507455524	100.94563445639	Majlis Perbandaran Teluk Intan
47	T047	40	3.95564416644814	100.945454515361	Majlis Perbandaran Teluk Intan
48	T048	40	3.95583711659783	100.945351000796	Majlis Perbandaran Teluk Intan
49	T049	40	3.956053720226	100.945281838092	Majlis Perbandaran Teluk Intan
50	T050	40	3.95628306793928	100.94520213544	Majlis Perbandaran Teluk Intan
51	T051	40	3.95646004470411	100.945138772039	Majlis Perbandaran Teluk Intan
52	T052	40	3.95666366118397	100.945068429197	Majlis Perbandaran Teluk Intan
53	T053	40	3.95688354294421	100.944988307071	Majlis Perbandaran Teluk Intan

3.0 PROPOSED NEW POLE

Proposed New Pole Coordinate					
No.	Pole Number	Distance (m)	Latitude	Longitude	Local Authority
54	T054	40	3.95708988619888	100.944929666736	Majlis Perbandaran Teluk Intan
55	T055	40	3.95729796149414	100.944852345289	Majlis Perbandaran Teluk Intan
56	T056	40	3.95747316272218	100.944783805833	Majlis Perbandaran Teluk Intan
57	T057	40	3.95762217802265	100.944731030134	Majlis Perbandaran Teluk Intan
58	T058	40	3.95778840239452	100.944677452883	Majlis Perbandaran Teluk Intan
59	T059	40	3.95797612010917	100.944609308317	Majlis Perbandaran Teluk Intan
60	T060	40	3.95815126480436	100.944566243136	Majlis Perbandaran Teluk Intan
61	T061	40	3.95833865067088	100.944498922037	Majlis Perbandaran Teluk Intan
62	T062	40	3.95854729404545	100.944425139402	Majlis Perbandaran Teluk Intan
63	T063	40	3.95874322317535	100.944360093146	Majlis Perbandaran Teluk Intan
64	T064	40	3.95897073326367	100.944292362452	Majlis Perbandaran Teluk Intan
65	T065	40	3.95918364385994	100.944224417557	Majlis Perbandaran Teluk Intan
66	T066	40	3.95938279762227	100.944148302807	Majlis Perbandaran Teluk Intan
67	T067	40	3.9595607051526	100.944108671554	Majlis Perbandaran Teluk Intan
68	T068	40	3.95975133507527	100.944035220752	Majlis Perbandaran Teluk Intan
69	T069	40	3.95989278354782	100.943984321646	Majlis Perbandaran Teluk Intan
70	T070	40	3.95983167007416	100.943760056511	Majlis Perbandaran Teluk Intan
71	T071	40	3.95963024937527	100.943566773269	Majlis Perbandaran Teluk Intan
72	T072	40	3.95942816561612	100.943371146362	Majlis Perbandaran Teluk Intan
73	T073	40	3.9592148889845	100.943172827874	Majlis Perbandaran Teluk Intan
74	T074	40	3.95899443264726	100.942971798	Majlis Perbandaran Teluk Intan
75	T075	40	3.9587837442493	100.942772284773	Majlis Perbandaran Teluk Intan
76	T076	40	3.95857597269903	100.942586047607	Majlis Perbandaran Teluk Intan
77	T077	40	3.95836159295235	100.942387712697	Majlis Perbandaran Teluk Intan
78	T078	40	3.95815205700201	100.942194147653	Majlis Perbandaran Teluk Intan
79	T079	40	3.95793724759608	100.941995818341	Majlis Perbandaran Teluk Intan
80	T080	40	3.95770861191962	100.941810294946	Majlis Perbandaran Teluk Intan
81	T081	40	3.95745023662961	100.941583056901	Majlis Perbandaran Teluk Intan
82	T082	40	3.96007414766801	100.943911156371	Majlis Perbandaran Teluk Intan
83	T083	40	3.96025533519002	100.943849554226	Majlis Perbandaran Teluk Intan
84	T084	40	3.96043399556604	100.943783727932	Majlis Perbandaran Teluk Intan

3.0 PROPOSED NEW POLE

Proposed New Pole Coordinate					
No.	Pole Number	Distance (m)	Latitude	Longitude	Local Authority
85	T085	40	3.96062132945119	100.943727314826	Majlis Perbandaran Teluk Intan
86	T086	40	3.96080336075325	100.943667120375	Majlis Perbandaran Teluk Intan
87	T087	40	3.96098611846691	100.943600178879	Majlis Perbandaran Teluk Intan
88	T088	40	3.96117493214761	100.943547929478	Majlis Perbandaran Teluk Intan
89	T089	40	3.96130716653769	100.943835786606	Majlis Perbandaran Teluk Intan
90	T090	40	3.96141154652139	100.944126656301	Majlis Perbandaran Teluk Intan
91	T091	40	3.96154855905112	100.944404792102	Majlis Perbandaran Teluk Intan
92	T092	40	3.96133124602984	100.943485866958	Majlis Perbandaran Teluk Intan
93	T093	40	3.9615469209111	100.943423396077	Majlis Perbandaran Teluk Intan
94	T094	40	3.96174765826188	100.943357662679	Majlis Perbandaran Teluk Intan
95	T095	40	3.96193700040769	100.943288709385	Majlis Perbandaran Teluk Intan
96	T096	40	3.96213896730837	100.943227117555	Majlis Perbandaran Teluk Intan
97	T097	40	3.96232788661416	100.943150691067	Majlis Perbandaran Teluk Intan
98	T098	40	3.96253771878703	100.943072911327	Majlis Perbandaran Teluk Intan
99	T099	40	3.96273529767337	100.943003504265	Majlis Perbandaran Teluk Intan
100	T100	40	3.96291804504686	100.94293451463	Majlis Perbandaran Teluk Intan
101	T101	40	3.96312162207192	100.942861561427	Majlis Perbandaran Teluk Intan
102	T102	40	3.96329865661429	100.942780223048	Majlis Perbandaran Teluk Intan
103	T103	40	3.96349949198409	100.942707446649	Majlis Perbandaran Teluk Intan
104	T104	40	3.96372832840757	100.942629227899	Majlis Perbandaran Teluk Intan
105	T105	40	3.96390408359635	100.942557306522	Majlis Perbandaran Teluk Intan
106	T106	40	3.96410709392141	100.942474514921	Majlis Perbandaran Teluk Intan
107	T107	40	3.96430009636074	100.942389647159	Majlis Perbandaran Teluk Intan
108	T108	40	3.96450499311962	100.942323243147	Majlis Perbandaran Teluk Intan
109	T109	40	3.96470987339044	100.942235326477	Majlis Perbandaran Teluk Intan
110	T110	40	3.96489769469338	100.942159517937	Majlis Perbandaran Teluk Intan
111	T111	40	3.96509720429388	100.942080616597	Majlis Perbandaran Teluk Intan

3.0 PROPOSED NEW POLE

Proposed New Pole Coordinate					
No.	Pole Number	Distance (m)	Latitude	Longitude	Local Authority
112	T112	40	3.9652935889791	100.942010130111	Majlis Perbandaran Teluk Intan
113	T113	40	3.96549369026638	100.941943878416	Majlis Perbandaran Teluk Intan
114	T114	40	3.96569481234551	100.941864768322	Majlis Perbandaran Teluk Intan
115	T115	40	3.96589098479756	100.941786630554	Majlis Perbandaran Teluk Intan
116	T116	40	3.96608034754737	100.941717040682	Majlis Perbandaran Teluk Intan
117	T117	40	3.96627845082277	100.941652769127	Majlis Perbandaran Teluk Intan
118	T118	40	3.96643853391611	100.94158578133	Majlis Perbandaran Teluk Intan
119	T119	40	3.96662535409644	100.941522049467	Majlis Perbandaran Teluk Intan
120	T120	40	3.96681544566551	100.941447891795	Majlis Perbandaran Teluk Intan
121	T121	40	3.96701092911512	100.941380590338	Majlis Perbandaran Teluk Intan
122	T122	40	3.96720315475124	100.941308952801	Majlis Perbandaran Teluk Intan
123	T123	40	3.96742187885896	100.941232475641	Majlis Perbandaran Teluk Intan
124	T124	40	3.96764412579155	100.94116541143	Majlis Perbandaran Teluk Intan
125	T125	40	3.96783008516544	100.941083499994	Majlis Perbandaran Teluk Intan
126	T126	40	3.96801514124871	100.941004579828	Majlis Perbandaran Teluk Intan
127	T127	40	3.96824907698627	100.940926157875	Majlis Perbandaran Teluk Intan
128	T128	40	3.96849581066703	100.940840358769	Majlis Perbandaran Teluk Intan
129	T129	40	3.96869749119164	100.940764115107	Majlis Perbandaran Teluk Intan
130	T130	40	3.96886878627964	100.940685448837	Majlis Perbandaran Teluk Intan
131	T131	40	3.96906680998814	100.940620878817	Majlis Perbandaran Teluk Intan
132	T132	40	3.96924795826702	100.940557205537	Majlis Perbandaran Teluk Intan
133	T133	40	3.96942308722845	100.940482238503	Majlis Perbandaran Teluk Intan
134	T134	40	3.96961622650707	100.940417000334	Majlis Perbandaran Teluk Intan
135	T135	40	3.96978986011118	100.94034858611	Majlis Perbandaran Teluk Intan
136	T136	40	3.96995715401101	100.940275674189	Majlis Perbandaran Teluk Intan
137	T137	40	3.97015998014457	100.940210678177	Majlis Perbandaran Teluk Intan
138	T138	40	3.97034548347892	100.940137172325	Majlis Perbandaran Teluk Intan
139	T139	40	3.97050657143588	100.940077024541	Majlis Perbandaran Teluk Intan
140	T140	40	3.97073439036547	100.93998587018	Majlis Perbandaran Teluk Intan
141	T141	40	3.97092263000089	100.939910777993	Majlis Perbandaran Teluk Intan
142	T142	40	3.97100937317431	100.93978705483	JKR Hilir Perak
143	T143	40	3.97116630845692	100.93988386352	JKR Hilir Perak
144	T144	40	3.97138378079782	100.939998688313	JKR Hilir Perak

3.0 PROPOSED NEW POLE

Proposed New Pole Coordinate					
No.	Pole Number	Distance (m)	Latitude	Longitude	Local Authority
145	T145	40	3.97159749923455	100.940148855008	JKR Hilir Perak
146	T146	40	3.97182115354027	100.940281372745	JKR Hilir Perak
147	T147	40	3.97204115925331	100.940409479927	JKR Hilir Perak
148	T148	40	3.97226425738227	100.940538767912	JKR Hilir Perak
149	T149	40	3.97249475194418	100.940673105123	JKR Hilir Perak
15	T150	40	3.97271743505512	100.940812993712	JKR Hilir Perak
151	T151	40	3.97295419746272	100.94094285697	JKR Hilir Perak
152	T152	40	3.97318058788513	100.941075473759	JKR Hilir Perak
153	T153	40	3.9733853610533	100.94119449542	JKR Hilir Perak
154	T154	40	3.97358714355894	100.941318058411	JKR Hilir Perak
155	T155	40	3.97380780515419	100.941431920109	JKR Hilir Perak
156	T156	40	3.97374761007333	100.941563144629	Majlis Perbandaran Teluk Intan
157	T157	40	3.97362342040857	100.94179342144	Majlis Perbandaran Teluk Intan
158	T158	40	3.97351744291558	100.942048236523	Majlis Perbandaran Teluk Intan
159	T159	40	3.97339842349753	100.942291519671	Majlis Perbandaran Teluk Intan
160	T160	40	3.97327324868713	100.942530672076	Majlis Perbandaran Teluk Intan
161	T161	40	3.97315775295263	100.942764677394	Majlis Perbandaran Teluk Intan
162	T162	40	3.97302466899357	100.943005091296	Majlis Perbandaran Teluk Intan
163	T163	40	3.9729051871724	100.943241450389	Majlis Perbandaran Teluk Intan
164	T164	40	3.97278063355167	100.943478042713	Majlis Perbandaran Teluk Intan
165	T165	40	3.97264947471118	100.943739589505	Majlis Perbandaran Teluk Intan
166	T166	40	3.9725227587993	100.943965750742	Majlis Perbandaran Teluk Intan
167	T167	40	3.972400865486	100.944211415457	Majlis Perbandaran Teluk Intan
168	T168	40	3.97228178913594	100.944448229424	Majlis Perbandaran Teluk Intan
169	T169	40	3.97215074398012	100.944705654763	Majlis Perbandaran Teluk Intan
170	T170	40	3.97202061086048	100.944944207382	Majlis Perbandaran Teluk Intan
171	T171	40	3.97085745155471	100.939689582545	JKR Hilir Perak
172	T172	40	3.97062644007533	100.939557740323	JKR Hilir Perak
173	T173	40	3.97038784359467	100.939415695466	JKR Hilir Perak
174	T174	40	3.97016758779955	100.939271353139	JKR Hilir Perak
175	T175	40	3.96993967994682	100.939125996654	JKR Hilir Perak
176	T176	40	3.96969968232616	100.938980630265	JKR Hilir Perak
177	T177	40	3.96947353805782	100.938839752022	JKR Hilir Perak

3.0 PROPOSED NEW POLE

Proposed New Pole Coordinate					
No.	Pole Number	Distance (m)	Latitude	Longitude	Local Authority
178	T178	40	3.96924752331488	100.938704781403	JKR Hilir Perak
179	T179	40	3.96900939471681	100.938565874187	JKR Hilir Perak
180	T180	40	3.9687635824304	100.938428268346	JKR Hilir Perak
181	T181	40	3.96852708121579	100.938274295619	JKR Hilir Perak
182	T182	40	3.96828465452099	100.938146844233	JKR Hilir Perak
183	T183	40	3.96804810012268	100.937964407564	JKR Hilir Perak
184	T184	40	3.96786916218626	100.937756415548	JKR Hilir Perak
185	T185	40	3.96774695815011	100.93753916129	JKR Hilir Perak
186	T186	40	3.96765420448032	100.937321989607	JKR Hilir Perak
187	T187	40	3.96759984300893	100.937088186541	JKR Hilir Perak
188	T188	40	3.96757433653139	100.936859554102	JKR Hilir Perak
189	T189	40	3.96756568201651	100.936658577799	JKR Hilir Perak
190	T190	40	3.9675830974062	100.936437895585	JKR Hilir Perak
191	T191	40	3.96750499660683	100.936426337172	Majlis Perbandaran Teluk Intan
192	T192	40	3.96728299125723	100.93630499632	Majlis Perbandaran Teluk Intan
193	T193	40	3.96709053509084	100.936204417642	Majlis Perbandaran Teluk Intan
194	T194	40	3.96686991778596	100.936082778627	Majlis Perbandaran Teluk Intan
195	T195	40	3.9666849738113	100.935985634872	Majlis Perbandaran Teluk Intan
196	T196	40	3.9664984437798	100.935880332681	Majlis Perbandaran Teluk Intan
197	T197	40	3.96632083231977	100.935783850599	Majlis Perbandaran Teluk Intan
198	T198	40	3.96611920211088	100.935646334423	Majlis Perbandaran Teluk Intan
199	T199	40	3.96593594250589	100.935551522312	Majlis Perbandaran Teluk Intan
200	T200	40	3.96572350812891	100.935438253608	Majlis Perbandaran Teluk Intan
201	T201	40	3.96553055555556	100.935340109776	Majlis Perbandaran Teluk Intan
202	T202	40	3.96544031034988	100.935286161866	Majlis Perbandaran Teluk Intan
203	T203	40	3.96556749785983	100.935116497987	Majlis Perbandaran Teluk Intan
204	T204	40	3.96566853049652	100.934937656027	Majlis Perbandaran Teluk Intan
205	T205	40	3.965760358381	100.934771215672	Majlis Perbandaran Teluk Intan
206	T206	40	3.96585055192867	100.934576426565	Majlis Perbandaran Teluk Intan
207	T207	40	3.96594418948617	100.934398111504	Majlis Perbandaran Teluk Intan
208	T208	40	3.96602187501309	100.934222606931	Majlis Perbandaran Teluk Intan
209	T209	40	3.9660954358978	100.934042018206	Majlis Perbandaran Teluk Intan
210	T210	40	3.96613917313229	100.933853796038	Majlis Perbandaran Teluk Intan

3.0 PROPOSED NEW POLE

Proposed New Pole Coordinate					
No.	Pole Number	Distance (m)	Latitude	Longitude	Local Authority
211	T211	40	3.96617474044856	100.933654612277	Majlis Perbandaran Teluk Intan
212	T212	40	3.96621267520408	100.933454799039	Majlis Perbandaran Teluk Intan
213	T213	40	3.96625960191523	100.933257136791	Majlis Perbandaran Teluk Intan
214	T214	40	3.96630498564064	100.933062843042	Majlis Perbandaran Teluk Intan
215	T215	40	3.96634055574146	100.932854969256	Majlis Perbandaran Teluk Intan
216	T216	40	3.96637762134444	100.932664043846	Majlis Perbandaran Teluk Intan
217	T217	40	3.96640796341547	100.93247052503	Majlis Perbandaran Teluk Intan
218	T218	40	3.96644118871741	100.932272685447	Majlis Perbandaran Teluk Intan
219	T219	40	3.96648223981944	100.932072482898	Majlis Perbandaran Teluk Intan
220	T220	40	3.96651092879372	100.931871760921	Majlis Perbandaran Teluk Intan
221	T221	40	3.96654010978291	100.931673887023	Majlis Perbandaran Teluk Intan
222	T222	40	3.9665982632298	100.931479963143	Majlis Perbandaran Teluk Intan
223	T223	40	3.96665369366152	100.931279205025	Majlis Perbandaran Teluk Intan
224	T224	40	3.96671594911647	100.931086942149	Majlis Perbandaran Teluk Intan
225	T225	40	3.96676292759211	100.930898830991	Majlis Perbandaran Teluk Intan
226	T226	40	3.96681412026496	100.930705066422	Majlis Perbandaran Teluk Intan
227	T227	40	3.9668765098551	100.930511738246	Majlis Perbandaran Teluk Intan
228	T228	40	3.96693013240368	100.930319176341	Majlis Perbandaran Teluk Intan
229	T229	40	3.96697219344755	100.930127357071	Majlis Perbandaran Teluk Intan
230	T230	40	3.96703214149382	100.929929015774	Majlis Perbandaran Teluk Intan
231	T231	40	3.96708852942154	100.929708750709	Majlis Perbandaran Teluk Intan
232	T232	40	3.96711835678832	100.929499275503	Majlis Perbandaran Teluk Intan
233	T233	40	3.96757996207043	100.936170859451	JKR Hilir Perak
234	T234	40	3.96764497895118	100.93592091203	JKR Hilir Perak
235	T235	40	3.96772397821067	100.935662708327	JKR Hilir Perak
236	T236	40	3.96779101107577	100.935396846542	JKR Hilir Perak
237	T237	40	3.96787005969732	100.935131944631	JKR Hilir Perak
238	T238	40	3.96791706656511	100.93490293818	JKR Hilir Perak
239	T239	40	3.96799904937914	100.934611945933	JKR Hilir Perak
240	T240	40	3.96808064707484	100.934318268099	JKR Hilir Perak
241	T241	40	3.96815553636269	100.93402006184	JKR Hilir Perak
242	T242	40	3.96824026759058	100.933727784105	JKR Hilir Perak
243	T243	40	3.96831686581056	100.933436159007	JKR Hilir Perak



PROJEK PENYEDIAAN DAN PENYELENGGARAAN POINT OF PRESENCE (POP) FASA 2: HAB INFRASTRUKTUR GENTIAN OPTIK BERHAMPIRAN DENGAN SEKOLAH, KAWASAN PERINDUSTRIAN, PREMIS KERAJAAN DAN KOMUNITI SEKITARNYA OLEH KEMENTERIAN KOMUNIKASI MALAYSIA – ZON UTARA (KKMM.400-11/17/132(1))



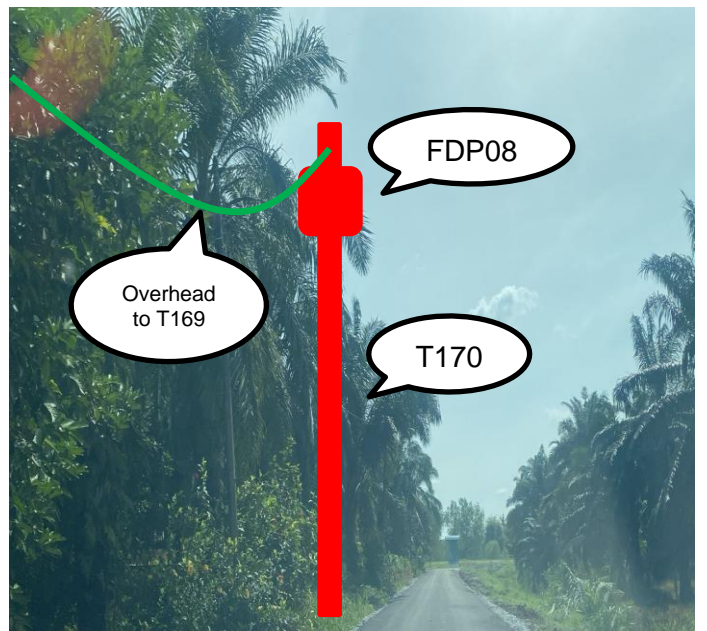
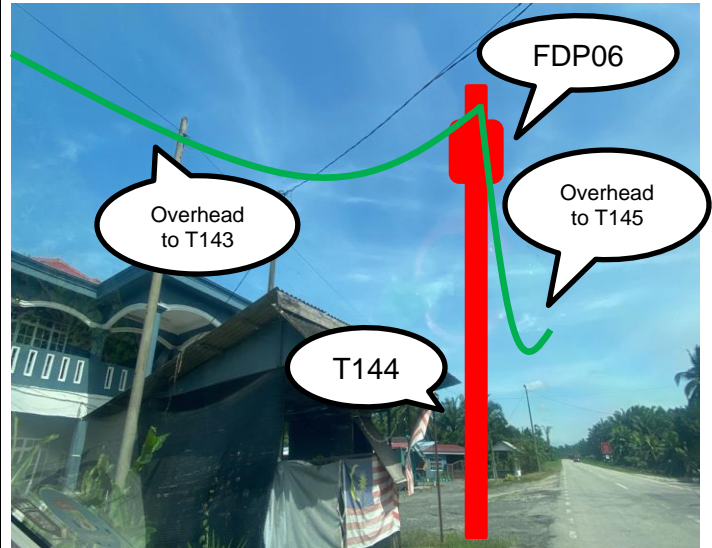
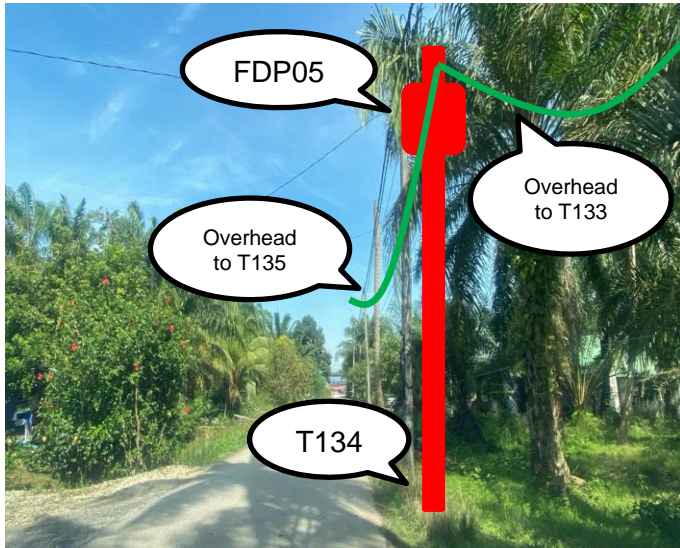
3.0 PROPOSED NEW POLE

Proposed New Pole Coordinate					
No.	Pole Number	Distance (m)	Latitude	Longitude	Local Authority
244	T244	40	3.96840802434694	100.933127175066	JKR Hilir Perak
245	T245	40	3.96846987053492	100.932841966776	JKR Hilir Perak
246	T246	40	3.96855283457589	100.932552329478	JKR Hilir Perak
247	T247	40	3.96860130241872	100.93225886378	JKR Hilir Perak
248	T248	40	3.96865982816255	100.931957985208	JKR Hilir Perak
249	T249	40	3.96871506694854	100.931662245109	JKR Hilir Perak
250	T250	40	3.96876450702188	100.931365655462	JKR Hilir Perak
251	T251	40	3.96882194637238	100.931061436204	JKR Hilir Perak
252	T252	40	3.96887256916184	100.930758929207	JKR Hilir Perak
253	T253	40	3.96894247181603	100.930432959205	JKR Hilir Perak
254	T254	40	3.96900383637919	100.930098527945	JKR Hilir Perak

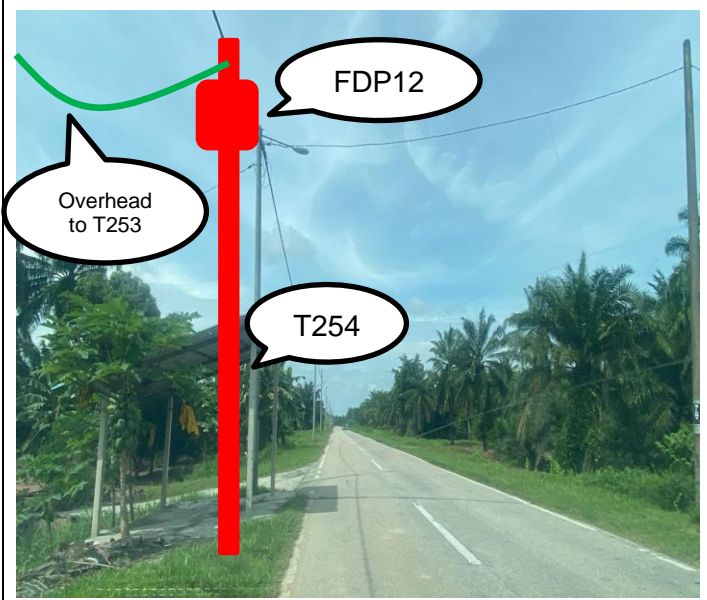
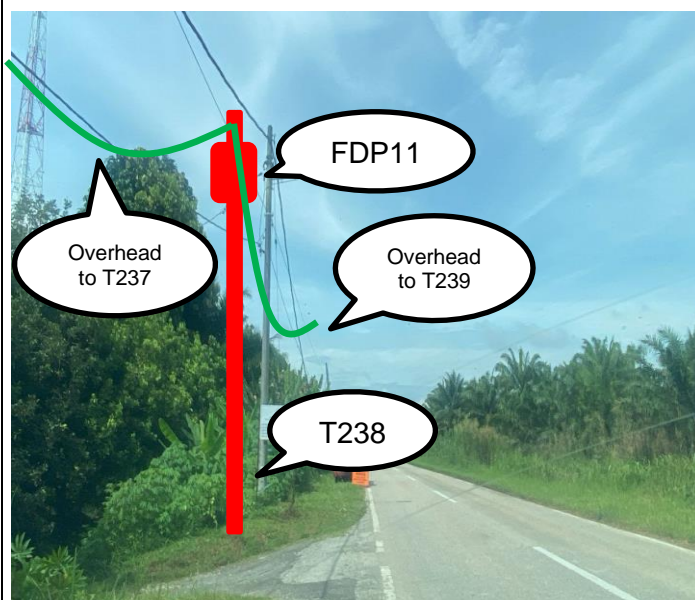
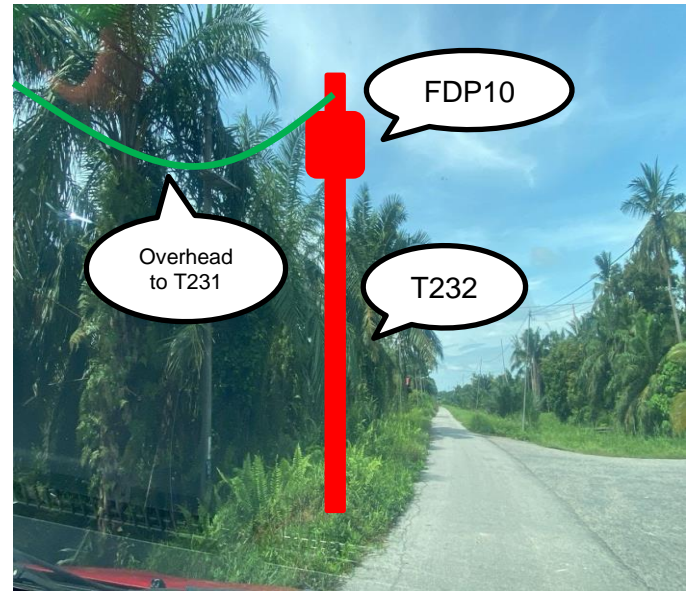
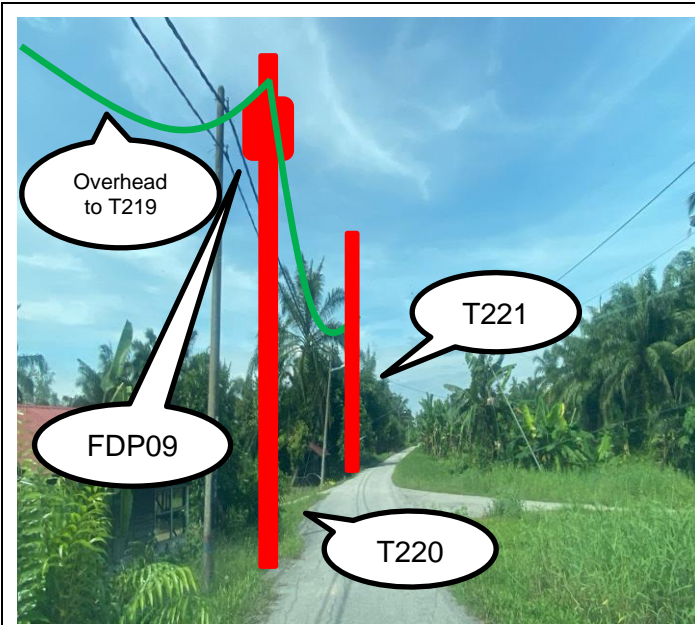
4.0 SITE PHOTOS - PROPOSED NEW POLE



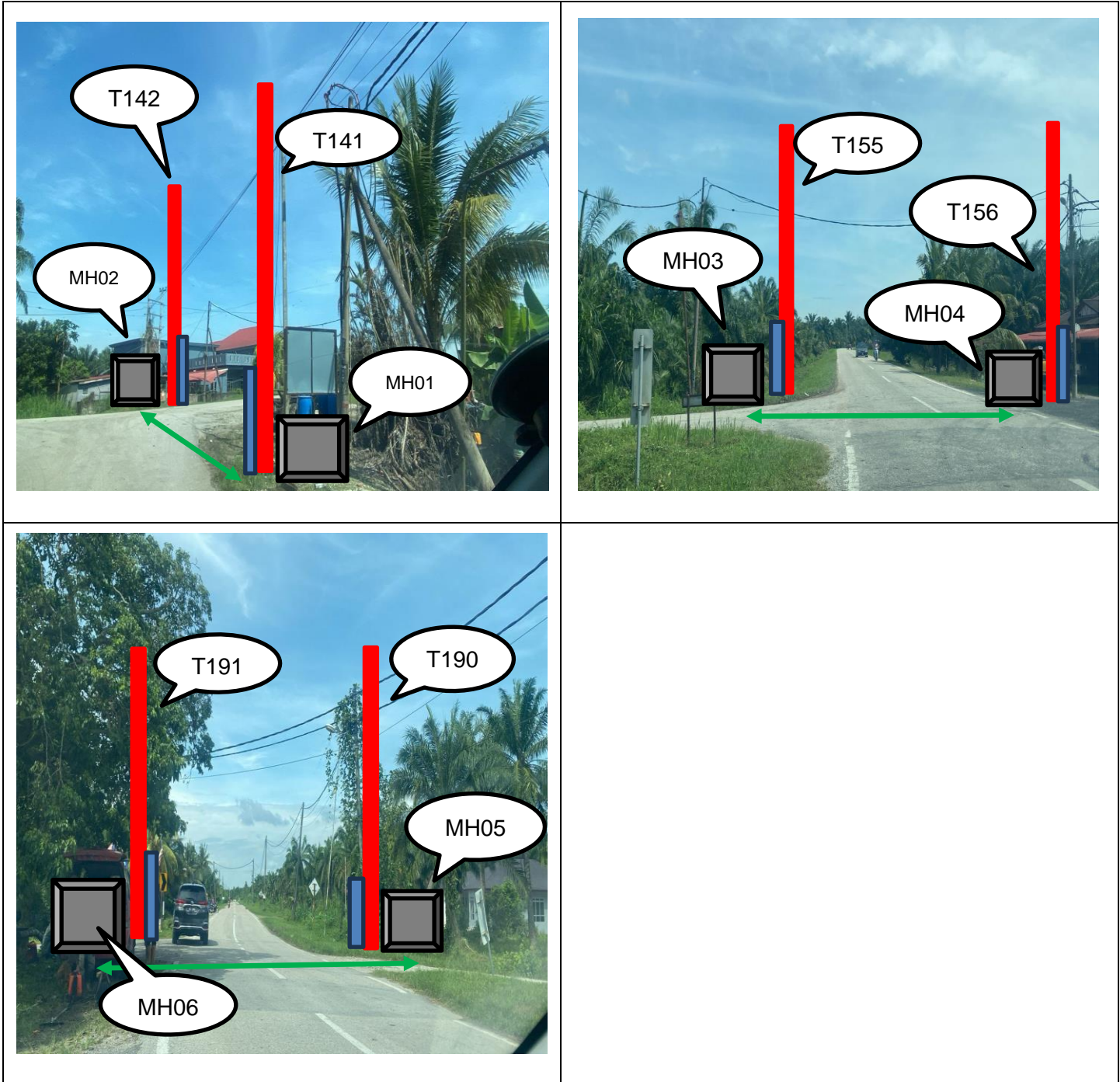
4.0 SITE PHOTOS - PROPOSED NEW POLE



4.0 SITE PHOTOS - PROPOSED NEW POLE



4.0 SITE PHOTOS - PROPOSED NEW POLE



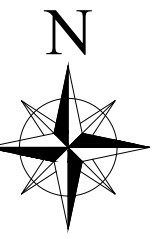


PROJEK PENYEDIAAN DAN PENYELENGGARAAN POINT OF PRESENCE (POP) FASA 2: HAB INFRASTRUKTUR GENTIAN OPTIK BERHAMPIRAN DENGAN SEKOLAH, KAWASAN PERINDUSTRIAN, PREMIS KERAJAAN DAN KOMUNITI SEKITARNYA OLEH KEMENTERIAN KOMUNIKASI MALAYSIA – ZON UTARA (KKMM.400-11/17/132(1))



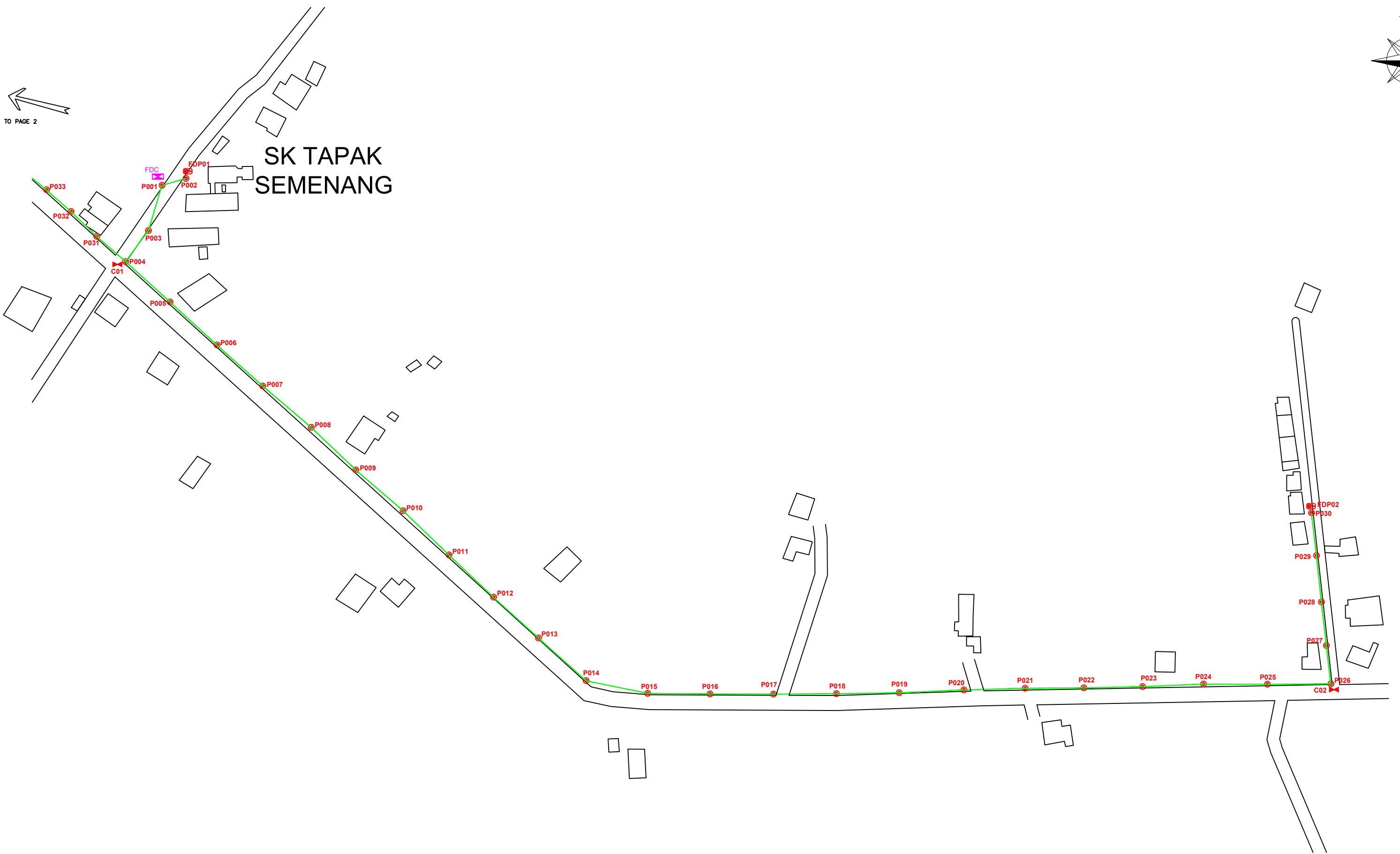
5.0 3rd PARTIES DEPENDENCIES

NO	LOCAL COUNCIL / AUTHORITY	REMARK
1	Majlis Perbandaran Teluk Intan	7,800M
2	JKR Hilir Perak	2,240M



TO PAGE 2

SK TAPAK SEMENANG



LEGEND

	12C FOC		Installed 1:4 splitter in FDC		INSTALLED POLE (9M)		NEW MANHOLE		TS/TB TENSION SMALL / TENSION BIG		MH NO.
	24C FOC		FDP		INSTALLED RISER		EXISTING MANHOLE		CLOSURE NO.		EXISTING TNB POLE NO.
	48C FOC		CLOSURE		SUSPENSION BIG		EXISTING ALLO POLE		FDP NO.		NEW POLE NO.
	90C FOC		NEW MANHOLE (PT)		SUSPENSION SMALL		LOOP		FDC NO.		SEE SHEET XXX
	144C FOC		INSTALLED POLE		FDC		FDP BOUNDARY				

KEY PLAN

PROJECT OWNER

MAIN CONTRACTOR

SUB-CONTRACTOR

KNZ ENGINEERING SDN BHD
 NO. 60 & 60A, Jalan Klebang Indah 1, Medan Klebang Indah, 30100 Ipoh, Perak
 No Tel: 019-3695071
 Email: admin@knzengineering.com.my
 Website: www.knzengineering.com.my

PROJECT TITLE

SEKOLAH KEBANGSAAN TAPAK SEMENANG

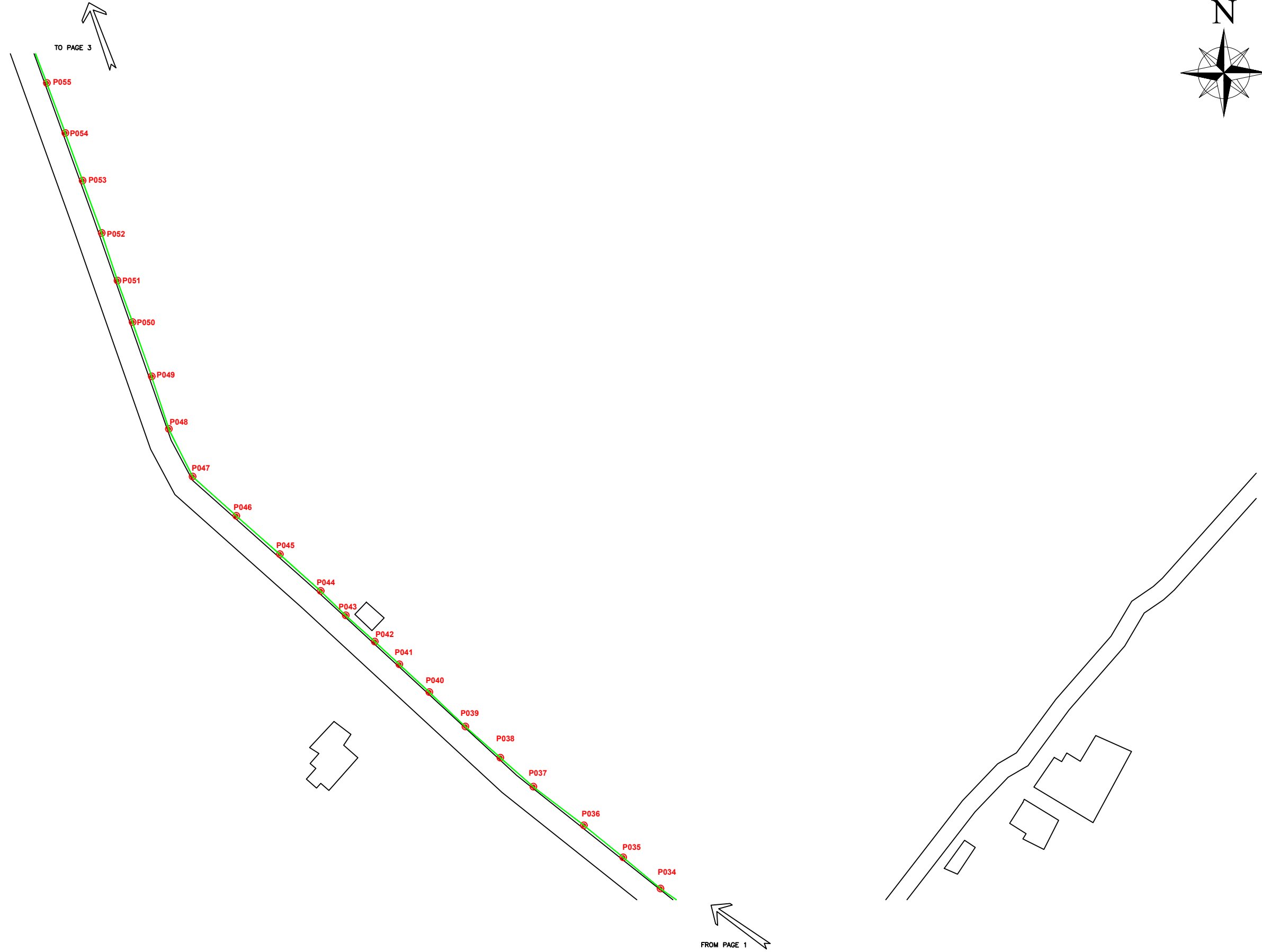
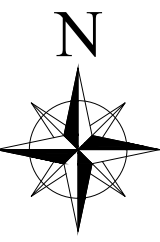
DRAWING TITLE

TP DRAWING POP 2 AT SEKOLAH KEBANGSAAN TAPAK SEMENANG

PROJECT PHASE

PROJECT PHASE 2

DESIGN BY	ZUL FAHMIE	DATE	24/12/2024
DRAWN BY	ZUL FAHMIE	SCALE	NOT TO SCALE
CHECKED BY	AZHAN HARIS	JOB NUMBER	ABAB001
DRAWING NUMBER		ABAB001	
		1/6	
THIS PRINT AND ITS COPYRIGHT ARE THE PROPERTY OF KNZ ENGINEERING SDN. BHD.			
		A3	



LEGEND

	12C FOC		Installed 1:4 splitter in FDC		INSTALLED POLE (9M)		NEW MANHOLE		TS / TB TENSION SMALL / TENSION BIG		MH NO.
	24C FOC		FDP		INSTALLED RISER		HOUSE NUMBER		EXISTING MANHOLE		EXISTING TNB POLE NO.
	48C FOC		CLOSURE		SUSPENSION BIG		EXISTING ALLO POLE		CLOSURE NO.		NEW POLE NO.
	90C FOC		NEW MANHOLE (PT)		SUSPENSION SMALL		LOOP		FDP NO.		
	144C FOC		INSTALLED POLE		FDC		FDP BOUNDARY		FDC NO.		

KEY PLAN

PROJECT OWNER



MAIN CONTRACTOR




SUB-CONTRACTOR



KNZ ENGINEERING SDN BHD
 NO. 60 & 60A, Jalan Klebang Indah 1, Medan Klebang Indah, 30100 Ipoh, Perak
 No Tel: 019-3695071
 Email: admin@knzengineering.com.my
 Website: www.knzengineering.com.my

PROJECT TITLE

SEKOLAH KEBANGSAAN TAPAK SEMENANG

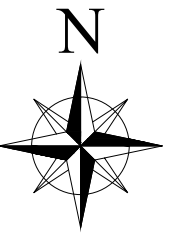
DRAWING TITLE

TP DRAWING POP 2 AT SEKOLAH KEBANGSAAN TAPAK SEMENANG

PROJECT PHASE

PROJECT PHASE 2

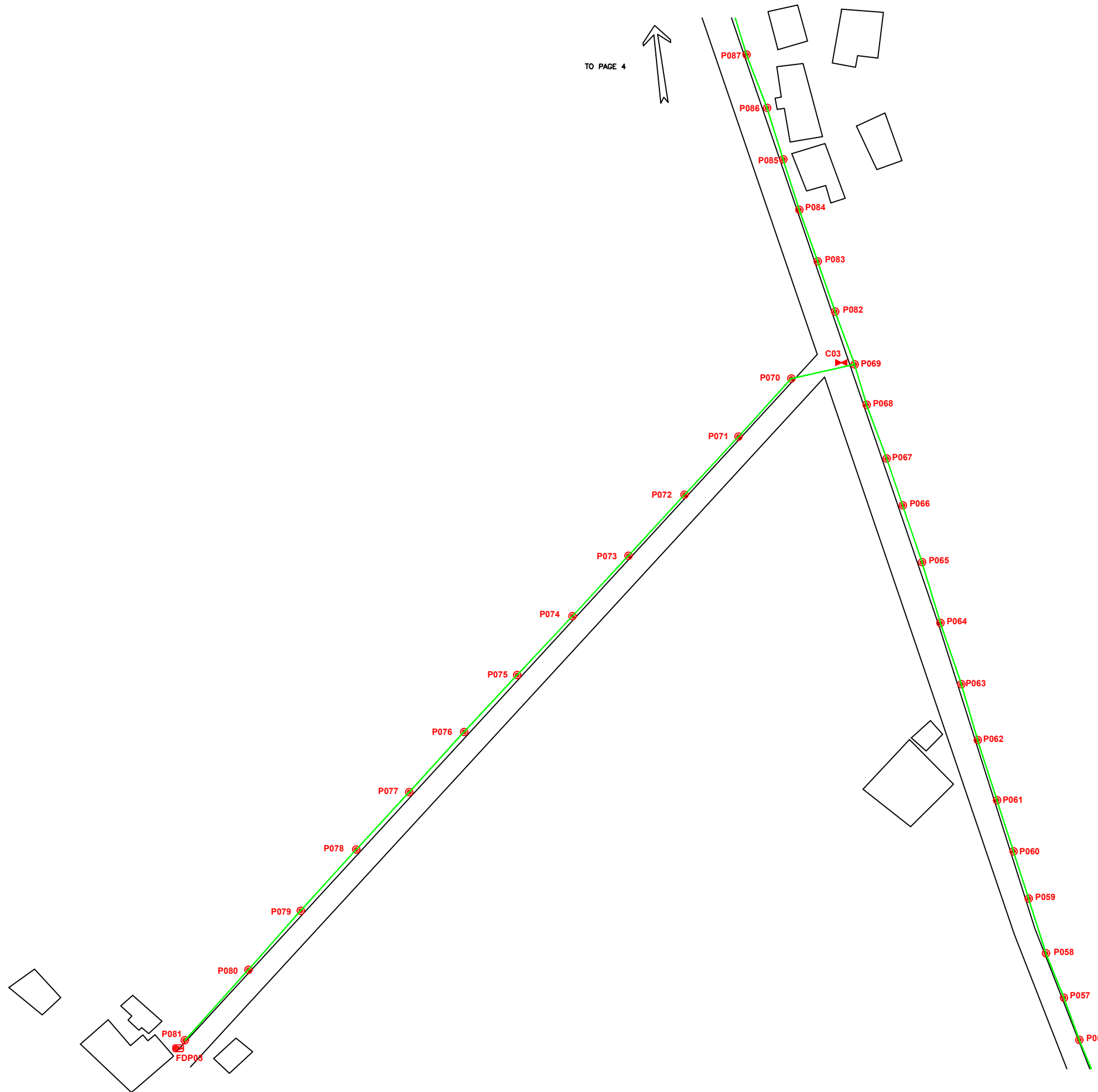
DESIGN BY	ZUL FAHMIE	DATE	24/12/2024
DRAWN BY	ZUL FAHMIE	SCALE	NOT TO SCALE
CHECKED BY	AZHAN HARIS	JOB NUMBER	ABAB001
DRAWING NUMBER		ABAB001	
THIS PRINT AND ITS COPYRIGHT ARE THE PROPERTY OF KNZ ENGINEERING SDN. BHD.		2/6	
		A3	



TO PAGE 4



FROM PAGE 2



LEGEND

	12C FOC		Installed 1:4 splitter in FDC		INSTALLED POLE (9M)		NEW MANHOLE		TENSION SMALL / TENSION BIG		MH NO.
	24C FOC		FDP		INSTALLED RISER		HOUSE NUMBER		EXISTING MANHOLE		EXISTING TNB POLE NO.
	48C FOC		CLOSURE		SUSPENSION BIG		EXISTING ALLO POLE		CLOSURE NO.		NEW POLE NO.
	90C FOC		NEW MANHOLE (PT)		SUSPENSION SMALL		LOOP		FDP NO.		FDC NO.
	144C FOC		INSTALLED POLE		FDC		FDP BOUNDARY				

KEY PLAN

PROJECT OWNER

MAIN CONTRACTOR

SUB-CONTRACTOR

KNZ ENGINEERING SDN BHD
 NO. 60 & 60A, Jalan Klebang Indah 1, Medan Klebang Indah, 30100 Ipoh, Perak
 No Tel: 019-3695071
 Email: admin@knzengineering.com.my
 Website: www.knzengineering.com.my

PROJECT TITLE

SEKOLAH KEBANGSAAN TAPAK SEMENANG

DRAWING TITLE

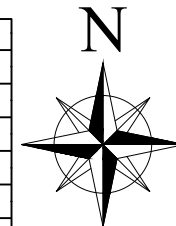
TP DRAWING POP 2 AT SEKOLAH KEBANGSAAN TAPAK SEMENANG

PROJECT PHASE

PROJECT PHASE 2

DESIGN BY	ZUL FAHMIE	DATE	24/12/2024
DRAWN BY	ZUL FAHMIE	SCALE	NOT TO SCALE
CHECKED BY	AZHAN HARIS	JOB NUMBER	ABAB001
DRAWING NUMBER		ABAB001	
THIS PRINT AND ITS COPYRIGHT ARE THE PROPERTY OF KNZ ENGINEERING SDN. BHD.		3/6	
		A3	

TO PAGE 5



FROM PAGE 3

LEGEND

	12C FOC		Installed 1:4 splitter in FDC		INSTALLED POLE (9M)		NEW MANHOLE		TENSION SMALL / TENSION BIG		MH NO.
	24C FOC		FDP		INSTALLED RISER		HOUSE NUMBER		EXISTING MANHOLE		EXISTING TNB POLE NO.
	48C FOC		CLOSURE		SUSPENSION BIG		EXISTING ALLO POLE		CLOSURE NO.		NEW POLE NO.
	90C FOC		NEW MANHOLE (PT)		SUSPENSION SMALL		LOOP		FDP NO.		SEE SHEET LINK
	144C FOC		INSTALLED POLE		FDC		LOOP BOUNDARY		FDC NO.		SEE SHEET LINK

KEY PLAN

PROJECT OWNER

MAIN CONTRACTOR

SUB-CONTRACTOR

KNZ ENGINEERING SDN BHD
 NO. 60 & 60A, Jalan Klebang Indah 1,
 Medan Klebang Indah, 30100 Ipoh, Perak
 No Tel: 019-3695071
 Email: admin@knzengineering.com.my
 Website: www.knzengineering.com.my

PROJECT TITLE

SEKOLAH KEBANGSAAN TAPAK SEMENANG

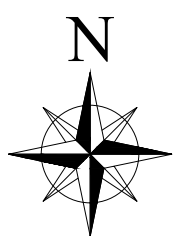
DRAWING TITLE

TP DRAWING POP 2 AT SEKOLAH KEBANGSAAN TAPAK SEMENANG

PROJECT PHASE

PROJECT PHASE 2

DESIGN BY	ZUL FAHMIE	DATE	24/12/2024
DRAWN BY	ZUL FAHMIE	SCALE	NOT TO SCALE
CHECKED BY	AZHAN HARIS	JOB NUMBER	ABAB001
DRAWING NUMBER		ABAB001	
THIS PRINT AND ITS COPYRIGHT ARE THE PROPERTY OF KNZ ENGINEERING SDN. BHD.		4/6	
		A3	



LEGEND

	12C FOC		Installed 1:4 splitter in FDC		INSTALLED POLE (9M)		NEW MANHOLE		TENSION SMALL / TENSION BIG		MH NO.
	24C FOC		FDP		INSTALLED RISER		HOUSE NUMBER		EXISTING MANHOLE		TKS-1 EXISTING TNB POLE NO.
	48C FOC		CLOSURE		SUSPENSION BIG		EXISTING ALLO POLE		CLOSURE NO.		NEW POLE NO.
	90C FOC		NEW MANHOLE (PT)		SUSPENSION SMALL		LOOP		FDP NO.		SEE SHEET XXX
	144C FOC		INSTALLED POLE		FDC		FDP BOUNDARY		FDC NO.		SEE SHEET XXX

KEY PLAN

PROJECT OWNER

MAIN CONTRACTOR

SUB-CONTRACTOR

KNZ ENGINEERING SDN BHD
 NO. 60 & 60A, Jalan Klebang Indah 1, Medan Klebang Indah, 30100 Ipoh, Perak
 No Tel: 019-3695071
 Email: admin@knzengineering.com.my
 Website: www.knzengineering.com.my

PROJECT TITLE

SEKOLAH KEBANGSAAN TAPAK SEMENANG

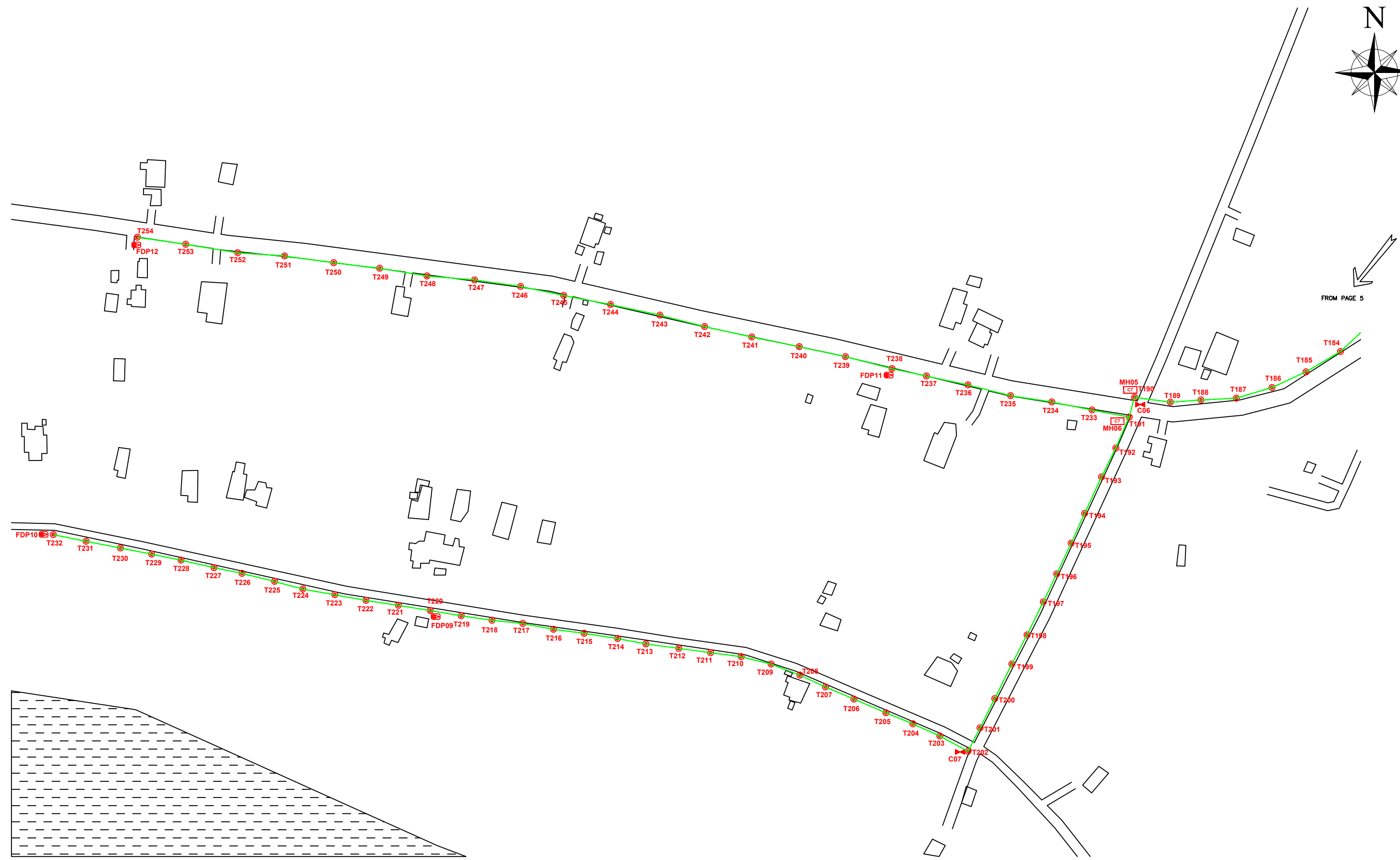
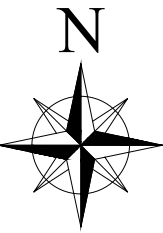
DRAWING TITLE

TP DRAWING POP 2 AT SEKOLAH KEBANGSAAN TAPAK SEMENANG

PROJECT PHASE

PROJECT PHASE 2

DESIGN BY	ZUL FAHMIE	DATE	25/12/2024
DRAWN BY	ZUL FAHMIE	SCALE	NOT TO SCALE
CHECKED BY	AZHAN HARIS	JOB NUMBER	ABAB001
DRAWING NUMBER	ABAB001		
THIS PRINT AND ITS COPYRIGHT ARE THE PROPERTY OF KNZ ENGINEERING SDN. BHD.			5/6
			A3



FROM PAGE 5

LEGEND					
	12C FOC		Installed 1:4 splitter in FDC		NEW MANHOLE
	24C FOC		FDP		TENSION SMALL / TENSION BIG
	48C FOC		CLOSURE		MH NO.
	90C FOC		NEW MANHOLE (PT)		EXISTING TNB POLE NO.
	144C FOC		INSTALLED POLE		NEW POLE NO.
					FDP NO.
			INSTALLED POLE (9M)		FDC NO.
			INSTALLED RISER		SUSPENSION BIG
			SUSPENSION BIG		SUSPENSION SMALL
			SUSPENSION SMALL		FDC
			LOOP		FDP BOUNDARY

KEY PLAN

PROJECT OWNER

MAIN CONTRACTOR

SUB-CONTRACTOR

KNZ ENGINEERING SDN BHD
 NO. 60 & 60A, Jalan Klebang Indah 1, Medan Klebang Indah, 30100 Ipoh, Perak
 No Tel: 019-3695071
 Email: admin@knzengineering.com.my
 Website: www.knzengineering.com.my

PROJECT TITLE

SEKOLAH KEBANGSAAN TAPAK SEMENANG

DRAWING TITLE

TP DRAWING POP 2 AT SEKOLAH KEBANGSAAN TAPAK SEMENANG

PROJECT PHASE

PROJECT PHASE 2

DESIGN BY	ZUL FAHMIE	DATE	25/12/2024
DRAWN BY	ZUL FAHMIE	SCALE	NOT TO SCALE
CHECKED BY	AZHAN HARIS	JOB NUMBER	ABAB001
DRAWING NUMBER		ABAB001	
THIS PRINT AND ITS COPYRIGHT ARE THE PROPERTY OF KNZ ENGINEERING SDN. BHD.		6/6	
		A3	