

TECHNICAL PROPOSAL

POP2 AEA6053 SEKOLAH MENENGAH KEBANGSAAN DATO' WAN AHMAD RASDI (D-SIDE)

Company Name : Equity Communication Sdn Bhd
Company Address : No. 5-1, Jalan Rampai Niaga 3, Rampai Business Park, 53300 Kuala Lumpur
Prepared By : Muhammad Hazmi bin Mohd Yusof
Date : 15/07/2024



Starting Point

Site / Boundary Name : Changkat Jering
Address : SMK Dato' Wan Ahmad Rasdi, 34850 Changkat Jering, Perak
District : Taiping
Postcode : 34850
State : Perak
GPS Coordinate : 4.757923, 100.723843
LRD : A

End Point

Site / Boundary Name : Changkat Jering
Address : Kampung Chengal Jantan, 34850 Changkat Jering, Perak
District : Taiping
Postcode : 34850
State : Perak
GPS Coordinate : 4.759853, 100.739901
LRD : B



SUPPLY, INSTALLATION AND COMMISSIONING OF FTTX NETWORK INFRASTRUCTURE FOR ALLO TECHNOLOGY SDN BHD POP 2 PROJECT (D-SIDE) - PMU TPNG FOR AEA6053-SEKOLAH MENENGAH KEBANGSAAN DATO' WAN AHMAD RASDI



1.0 WORK SUMMARY

NO	PROPOSED DISTANCE AND METHOD	UNIT	QUANTITY
1	Horizontal Directional Drilling (HDD)	m	150
2	Carriage Way Open Trench (CW)	m	0
3	Grass Verge Open Trenching (GV)	m	0
4	Micro Trenching (MT)	m	0
Total			150

NO	OTHER INFORMATION	UNIT	QUANTITY
1	Installation of Short Span ADSS Fibre Cables	m	5780
2	Install New Pole	ea	126
3	Install New JRC7 Manhole	ea	2
4	Install GI Riser 100mm	ea	2
5	Install Fiber Distribution Point and Closure (Splicing, Termination and Testing)	ea	18
6	Estimated Time Required for Completion	days	30

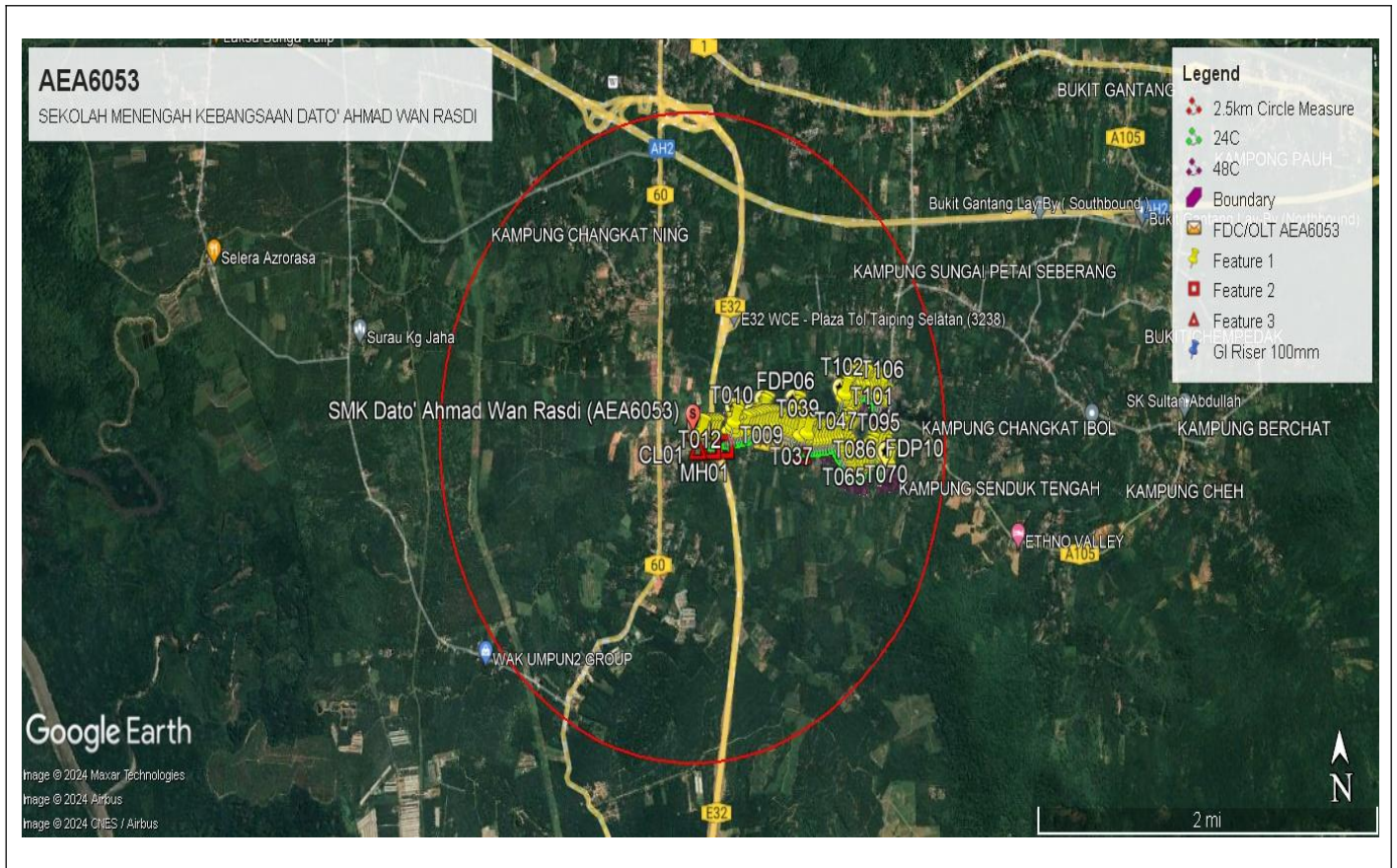
2.0 LOCAL AUTHORITY SUMMARY

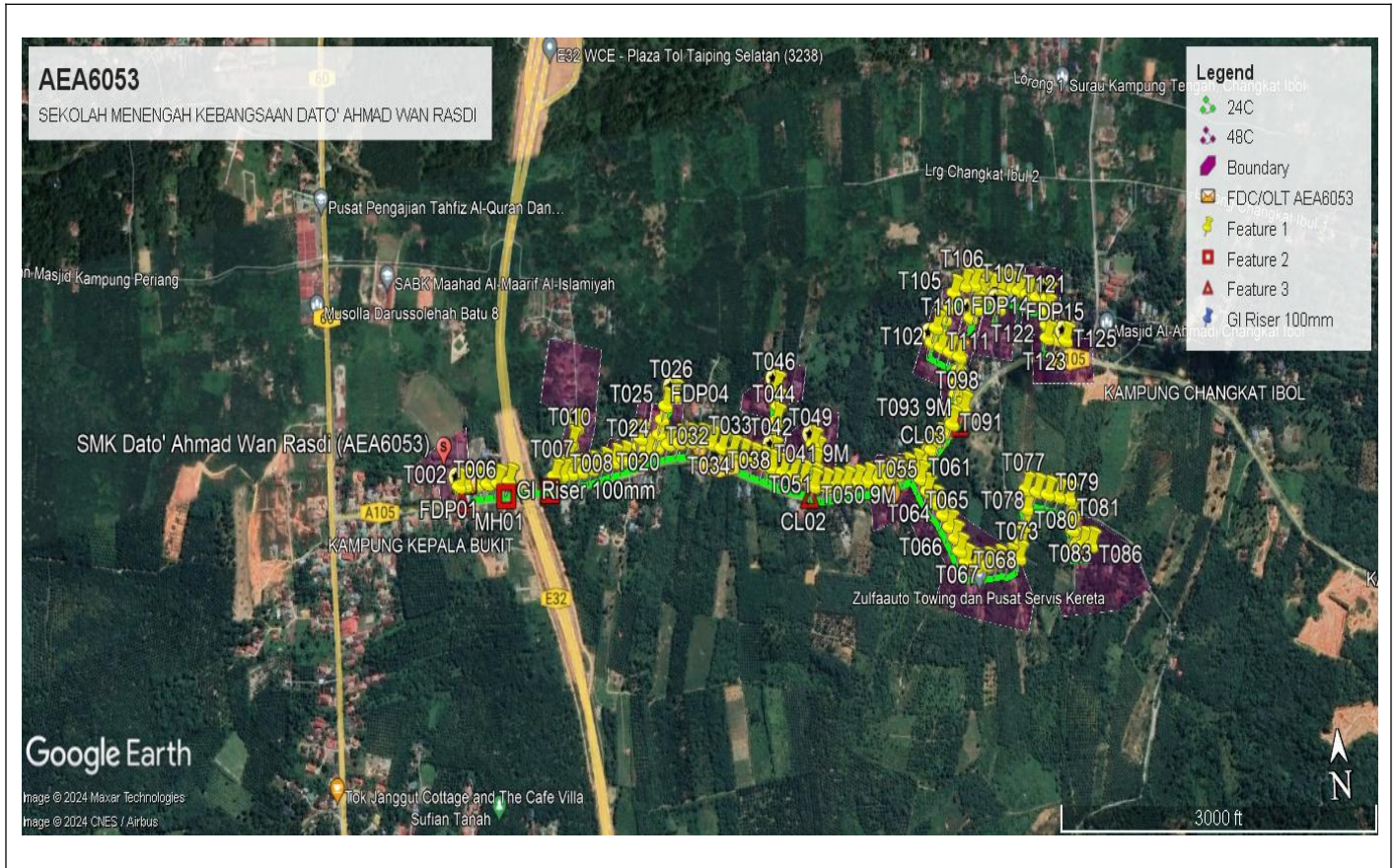
Daerah Taiping

NO	ITEMS	Owner	Quantity	Distance (m)
1	HDD	JKR	1	150
		Majlis	-	-
		Estate / Private Land	-	-
2	New Pole	JKR	55	1650
		Majlis	71	2130
		Estate / Private Land	-	-
Total Distance (m)				3,930

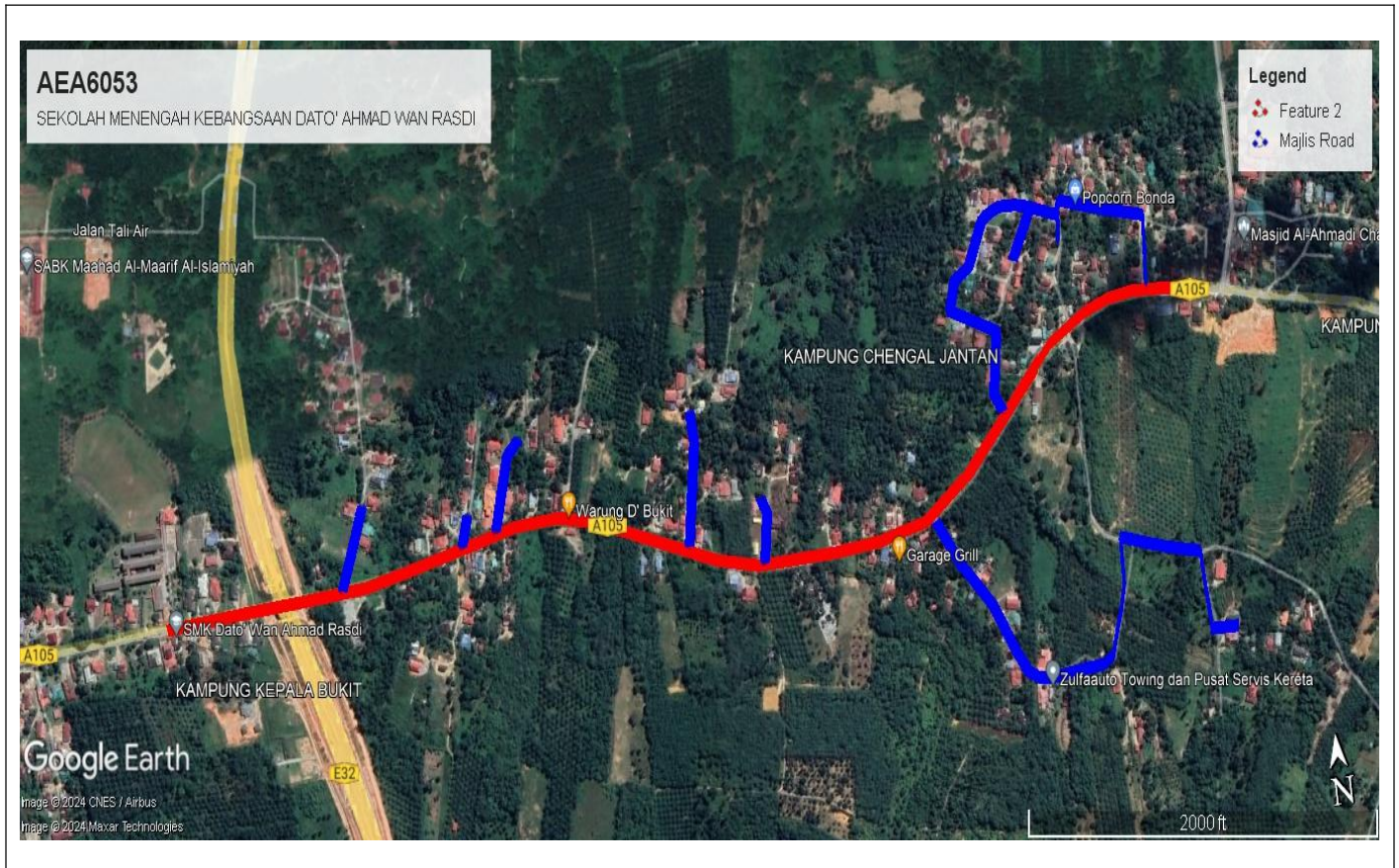
3.0 SITE PLAN (KMZ)

3.1 Overview Site Area





3.2 Site Plan - KMZ Routing (All Local Authority)



Red Colour - JKR Road

Blue Colour - Majlis Road

3.0 PROPOSED NEW MANHOLE

Proposed New Manhole Coordinate					
No.	Manhole Number	Distance (m)	Latitude	Longitude	Local Authority
1	MH01	75	4.757907	100.724867	JKR Daerah LMS Taiping
2	MH02	75	4.757935	100.726044	JKR Daerah LMS Taiping

4.0 PROPOSED NEW POLE

Proposed New Pole Coordinate					
No.	Pole Number	Distance (m)	Latitude	Longitude	Local Authority
1	T000	10	4.757900	100.723733	JKR Daerah LMS Taiping
2	T001	20	4.757903	100.723662	JKR Daerah LMS Taiping
3	T002	20	4.757884	100.723492	JKR Daerah LMS Taiping
4	T003	32	4.757894	100.723980	JKR Daerah LMS Taiping
5	T004	31	4.757891	100.724264	JKR Daerah LMS Taiping
6	T005	34	4.757891	100.724541	JKR Daerah LMS Taiping
7	T006	30	4.757898	100.724841	JKR Daerah LMS Taiping
8	T007	25	4.757929	100.726062	JKR Daerah LMS Taiping
9	T008	40	4.757932	100.726271	JKR Daerah LMS Taiping
10	T009	39	4.758251	100.726435	Majlis Perbandaran Taiping
11	T010	42	4.758561	100.726572	Majlis Perbandaran Taiping
12	T011	30	4.758899	100.726736	Majlis Perbandaran Taiping
13	T012	30	4.757947	100.726514	JKR Daerah LMS Taiping
14	T013	33	4.757967	100.726784	JKR Daerah LMS Taiping
15	T014	34	4.758003	100.727077	JKR Daerah LMS Taiping
16	T015	33	4.758052	100.727376	JKR Daerah LMS Taiping
17	T016	31	4.758112	100.727677	JKR Daerah LMS Taiping
18	T017	38	4.758148	100.727940	JKR Daerah LMS Taiping
19	T018	22	4.758205	100.728274	JKR Daerah LMS Taiping
20	T019	22	4.758382	100.728367	Majlis Perbandaran Taiping
21	T020	34	4.758552	100.728420	Majlis Perbandaran Taiping
22	T021	31	4.758271	100.728576	JKR Daerah LMS Taiping
23	T022	32	4.758333	100.728843	JKR Daerah LMS Taiping
24	T023	34	4.758599	100.728921	Majlis Perbandaran Taiping
25	T024	34	4.758901	100.729020	Majlis Perbandaran Taiping
26	T025	32	4.759175	100.729134	Majlis Perbandaran Taiping
27	T026	35	4.759364	100.729360	Majlis Perbandaran Taiping
28	T027	32	4.758377	100.729153	JKR Daerah LMS Taiping
29	T028	33	4.758393	100.729439	JKR Daerah LMS Taiping
30	T029	34	4.758392	100.729727	JKR Daerah LMS Taiping
31	T030	32	4.758370	100.730031	JKR Daerah LMS Taiping
32	T031	32	4.758309	100.730307	JKR Daerah LMS Taiping

Proposed New Pole Coordinate					
No.	Pole Number	Distance (m)	Latitude	Longitude	Local Authority
33	T032	34	4.758208	100.730568	JKR Daerah LMS Taiping
34	T033	33	4.758097	100.730854	JKR Daerah LMS Taiping
35	T034	32	4.757980	100.731123	JKR Daerah LMS Taiping
36	T035	31	4.757875	100.731387	JKR Daerah LMS Taiping
37	T036	30	4.757780	100.731654	JKR Daerah LMS Taiping
38	T037	33	4.757694	100.731880	JKR Daerah LMS Taiping
39	T038	32	4.757593	100.732170	JKR Daerah LMS Taiping
40	T039	31	4.757509	100.732427	JKR Daerah LMS Taiping
41	T040	33	4.757427	100.732692	JKR Daerah LMS Taiping
42	T041	32	4.757364	100.732974	JKR Daerah LMS Taiping
43	T042	37	4.757983	100.731942	Majlis Perbandaran Taiping
44	T043	38	4.758328	100.732009	Majlis Perbandaran Taiping
45	T044	35	4.758663	100.732074	Majlis Perbandaran Taiping
46	T045	39	4.758972	100.732131	Majlis Perbandaran Taiping
47	T046	33	4.759331	100.732116	Majlis Perbandaran Taiping
48	T047	29	4.757655	100.733040	Majlis Perbandaran Taiping
49	T048	25	4.757913	100.733095	Majlis Perbandaran Taiping
50	T049	15	4.758112	100.733012	Majlis Perbandaran Taiping
51	T050	33	4.757246	100.732963	JKR Daerah LMS Taiping
52	T051	32	4.757226	100.733260	JKR Daerah LMS Taiping
53	T052	33	4.757214	100.733547	JKR Daerah LMS Taiping
54	T053	31	4.757226	100.733833	JKR Daerah LMS Taiping
55	T054	31	4.757234	100.734115	JKR Daerah LMS Taiping
56	T055	30	4.757252	100.734392	JKR Daerah LMS Taiping
57	T056	31	4.757275	100.734666	JKR Daerah LMS Taiping
58	T057	33	4.757288	100.734937	JKR Daerah LMS Taiping
59	T058	28	4.757316	100.735211	JKR Daerah LMS Taiping
60	T059	30	4.757386	100.735454	JKR Daerah LMS Taiping
61	T060	34	4.757459	100.735710	JKR Daerah LMS Taiping
62	T061	34	4.757195	100.735840	Majlis Perbandaran Taiping
63	T062	37	4.756935	100.736001	Majlis Perbandaran Taiping
64	T063	37	4.756665	100.736188	Majlis Perbandaran Taiping
65	T064	33	4.756411	100.736391	Majlis Perbandaran Taiping
66	T065	30	4.756154	100.736538	Majlis Perbandaran Taiping
67	T066	34	4.755913	100.736668	Majlis Perbandaran Taiping
68	T067	31	4.755640	100.736776	Majlis Perbandaran Taiping
69	T068	32	4.755409	100.736927	Majlis Perbandaran Taiping
70	T069	31	4.755293	100.737182	Majlis Perbandaran Taiping
71	T070	33	4.755299	100.737471	Majlis Perbandaran Taiping
72	T071	35	4.755326	100.737766	Majlis Perbandaran Taiping
73	T072	33	4.755332	100.738076	Majlis Perbandaran Taiping
74	T073	37	4.755383	100.738357	Majlis Perbandaran Taiping

Proposed New Pole Coordinate					
No.	Pole Number	Distance (m)	Latitude	Longitude	Local Authority
75	T074	37	4.755713	100.738440	Majlis Perbandaran Taiping
76	T075	42	4.756035	100.738540	Majlis Perbandaran Taiping
77	T076	45	4.756396	100.738621	Majlis Perbandaran Taiping
78	T077	35	4.756795	100.738616	Majlis Perbandaran Taiping
79	T078	32	4.756728	100.738905	Majlis Perbandaran Taiping
80	T079	32	4.756655	100.739190	Majlis Perbandaran Taiping
81	T080	33	4.756593	100.739468	Majlis Perbandaran Taiping
82	T081	38	4.756519	100.739747	Majlis Perbandaran Taiping
83	T082	35	4.756184	100.739776	Majlis Perbandaran Taiping
84	T083	36	4.755870	100.739806	Majlis Perbandaran Taiping
85	T084	25	4.755553	100.739840	Majlis Perbandaran Taiping
86	T085	26	4.755543	100.740059	Majlis Perbandaran Taiping
87	T086	31	4.755518	100.740283	Majlis Perbandaran Taiping
88	T087	33	4.757627	100.735932	JKR Daerah LMS Taiping
89	T088	31	4.757785	100.736174	JKR Daerah LMS Taiping
90	T089	29	4.757942	100.736393	JKR Daerah LMS Taiping
91	T090	27	4.758113	100.736585	JKR Daerah LMS Taiping
92	T091	24	4.758279	100.736758	JKR Daerah LMS Taiping
93	T092	26	4.758426	100.736919	JKR Daerah LMS Taiping
94	T093	15	4.758564	100.737081	JKR Daerah LMS Taiping
95	T094	27	4.758670	100.737007	JKR Daerah LMS Taiping
96	T095	28	4.758878	100.736898	Majlis Perbandaran Taiping
97	T096	30	4.759125	100.736942	Majlis Perbandaran Taiping
98	T097	31	4.759385	100.736997	Majlis Perbandaran Taiping
99	T098	30	4.759656	100.737051	Majlis Perbandaran Taiping
100	T099	30	4.759773	100.736804	Majlis Perbandaran Taiping
101	T100	30	4.759884	100.736572	Majlis Perbandaran Taiping
102	T101	37	4.760001	100.736342	Majlis Perbandaran Taiping
103	T102	34	4.760298	100.736467	Majlis Perbandaran Taiping
104	T103	32	4.760465	100.736718	Majlis Perbandaran Taiping
105	T104	34	4.760699	100.736870	Majlis Perbandaran Taiping
106	T105	36	4.760982	100.736991	Majlis Perbandaran Taiping
107	T106	30	4.761110	100.737280	Majlis Perbandaran Taiping
108	T107	27	4.761106	100.737537	Majlis Perbandaran Taiping
109	T108	26	4.761039	100.737771	Majlis Perbandaran Taiping
110	T109	27	4.760842	100.737690	Majlis Perbandaran Taiping
111	T110	30	4.760616	100.737577	Majlis Perbandaran Taiping
112	T111	29	4.760438	100.737401	Majlis Perbandaran Taiping
113	T112	26	4.760939	100.738001	Majlis Perbandaran Taiping
114	T113	31	4.760867	100.738214	Majlis Perbandaran Taiping
115	T114	22	4.760581	100.738168	Majlis Perbandaran Taiping
116	T115	31	4.761040	100.738210	Majlis Perbandaran Taiping



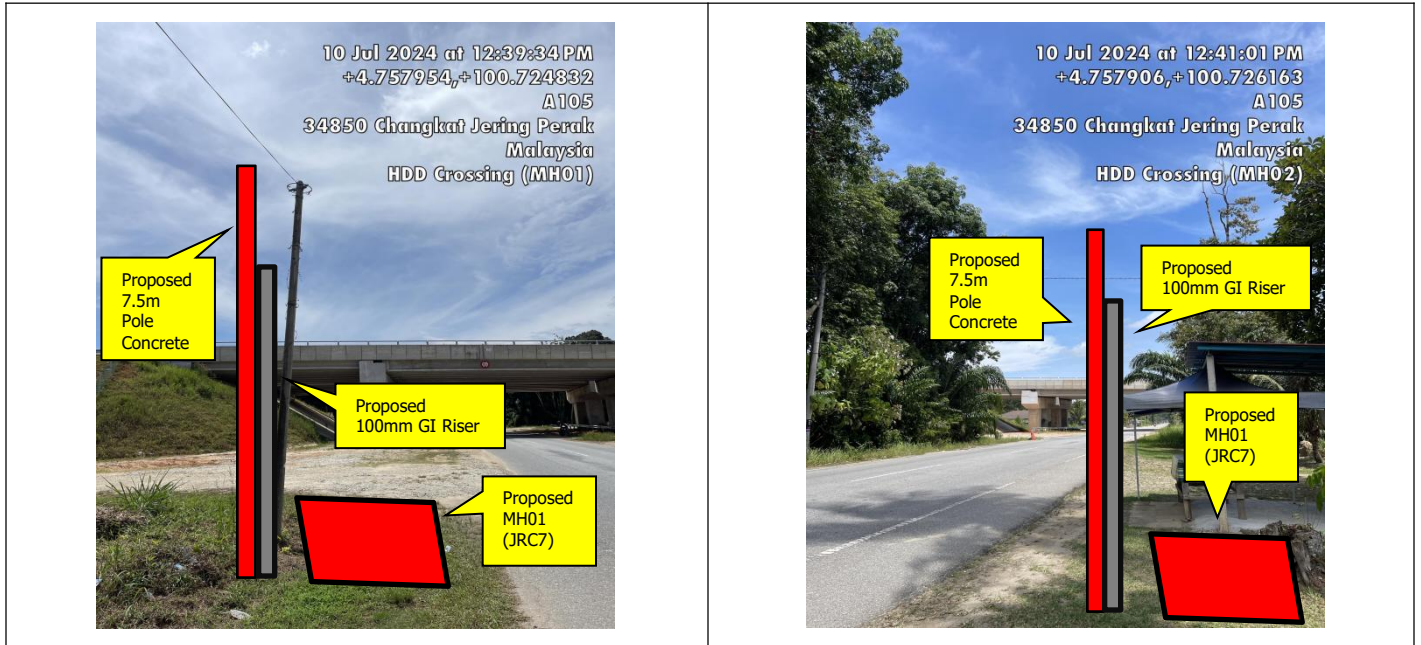
SUPPLY, INSTALLATION AND COMMISSIONING OF FTTX NETWORK INFRASTRUCTURE FOR ALLO TECHNOLOGY SDN BHD POP 2 PROJECT (D-SIDE) - PMU TPNG FOR AEA6053-SEKOLAH MENENGAH KEBANGSAAN DATO' WAN AHMAD RASDI



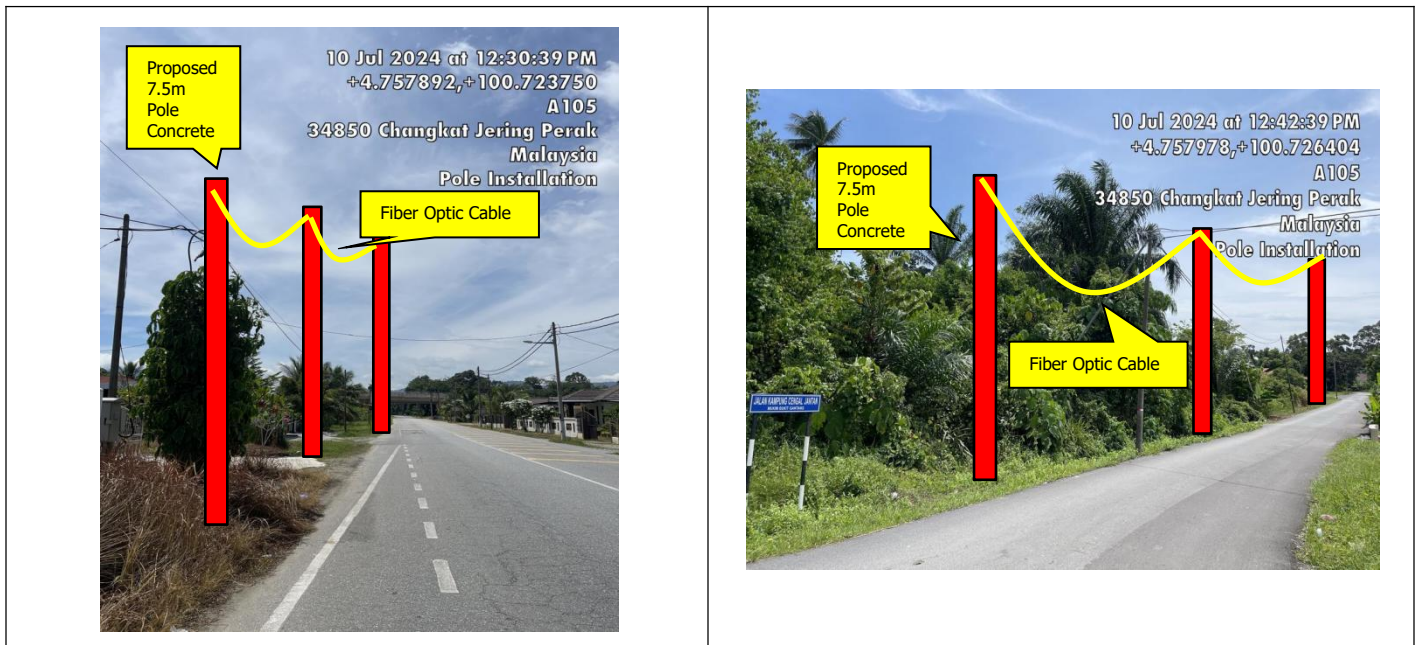
Proposed New Pole Coordinate

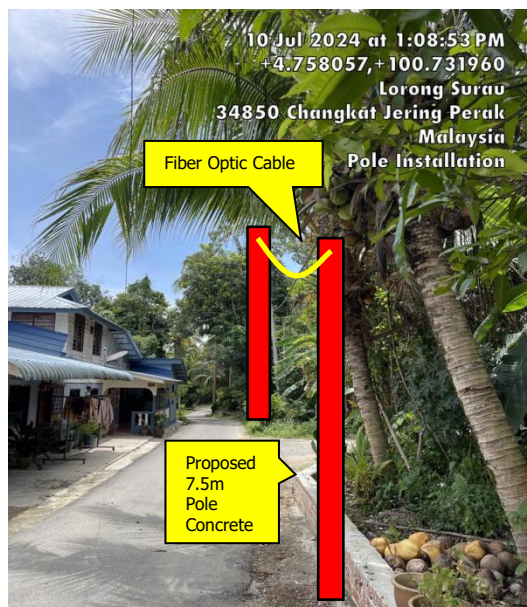
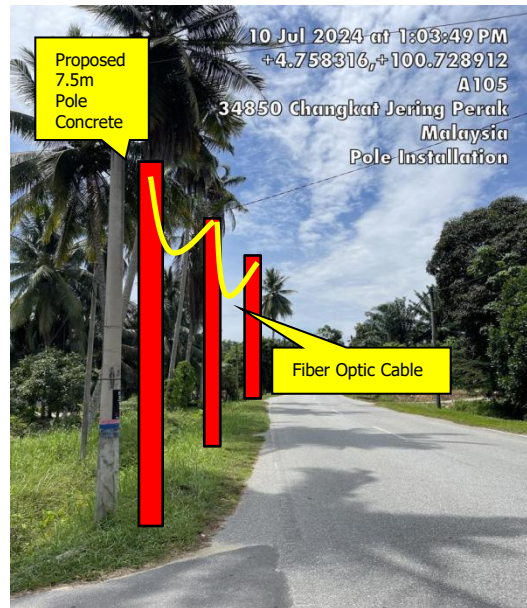
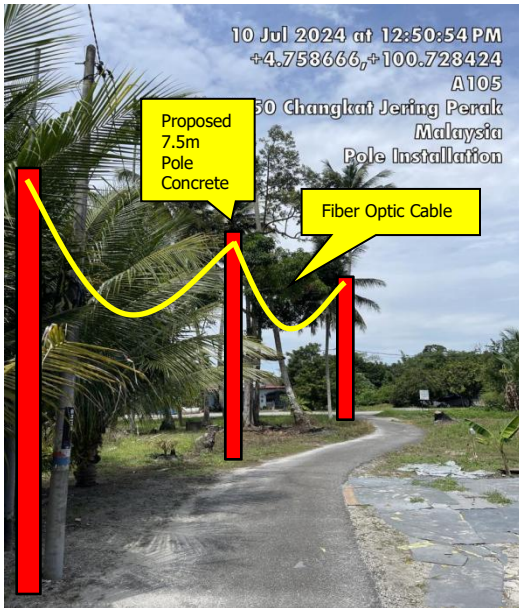
No.	Pole Number	Distance (m)	Latitude	Longitude	Local Authority
117	T116	30	4.760984	100.738467	Majlis Perbandaran Taiping
118	T117	27	4.760905	100.738724	Majlis Perbandaran Taiping
119	T118	30	4.760823	100.738946	Majlis Perbandaran Taiping
120	T119	32	4.760739	100.739199	Majlis Perbandaran Taiping
121	T120	32	4.760711	100.739479	Majlis Perbandaran Taiping
122	T121	32	4.760435	100.739443	Majlis Perbandaran Taiping
123	T122	30	4.760148	100.739415	Majlis Perbandaran Taiping
124	T123	29	4.759881	100.739398	JKR Daerah LMS Taiping
125	T124	28	4.759833	100.739644	JKR Daerah LMS Taiping
126	T125	30	4.759799	100.739895	JKR Daerah LMS Taiping

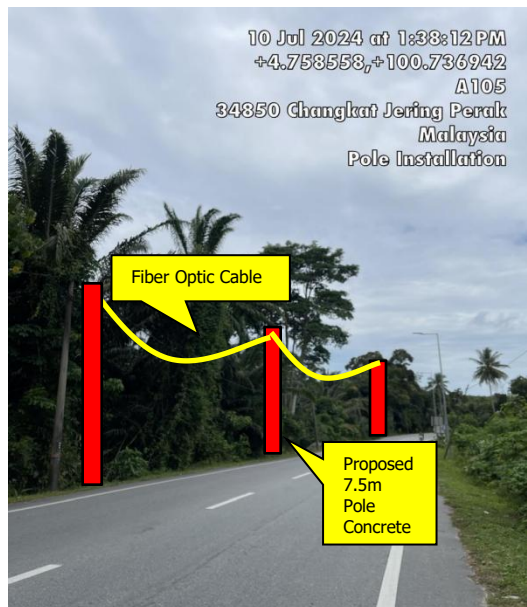
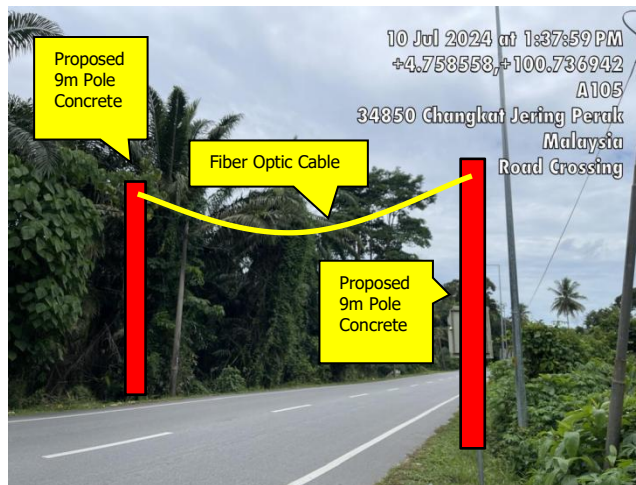
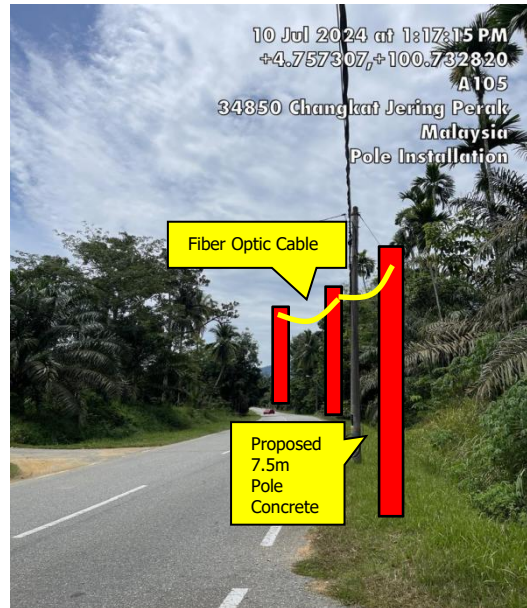
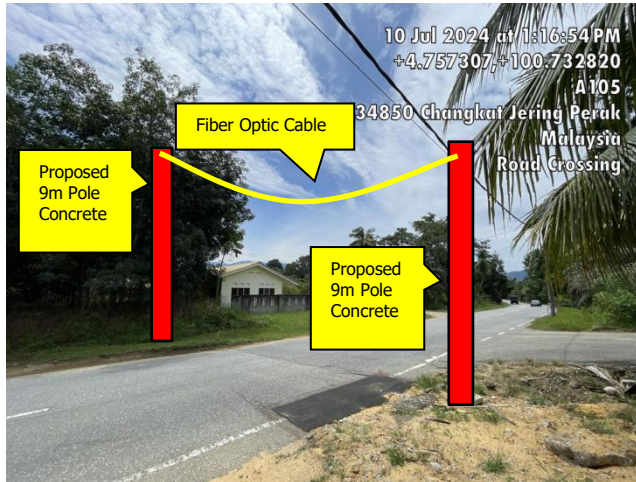
5.0 SITE PHOTOS - PROPOSED HDD AND NEW MANHOLE



6.0 SITE PHOTOS - PROPOSED NEW POLE







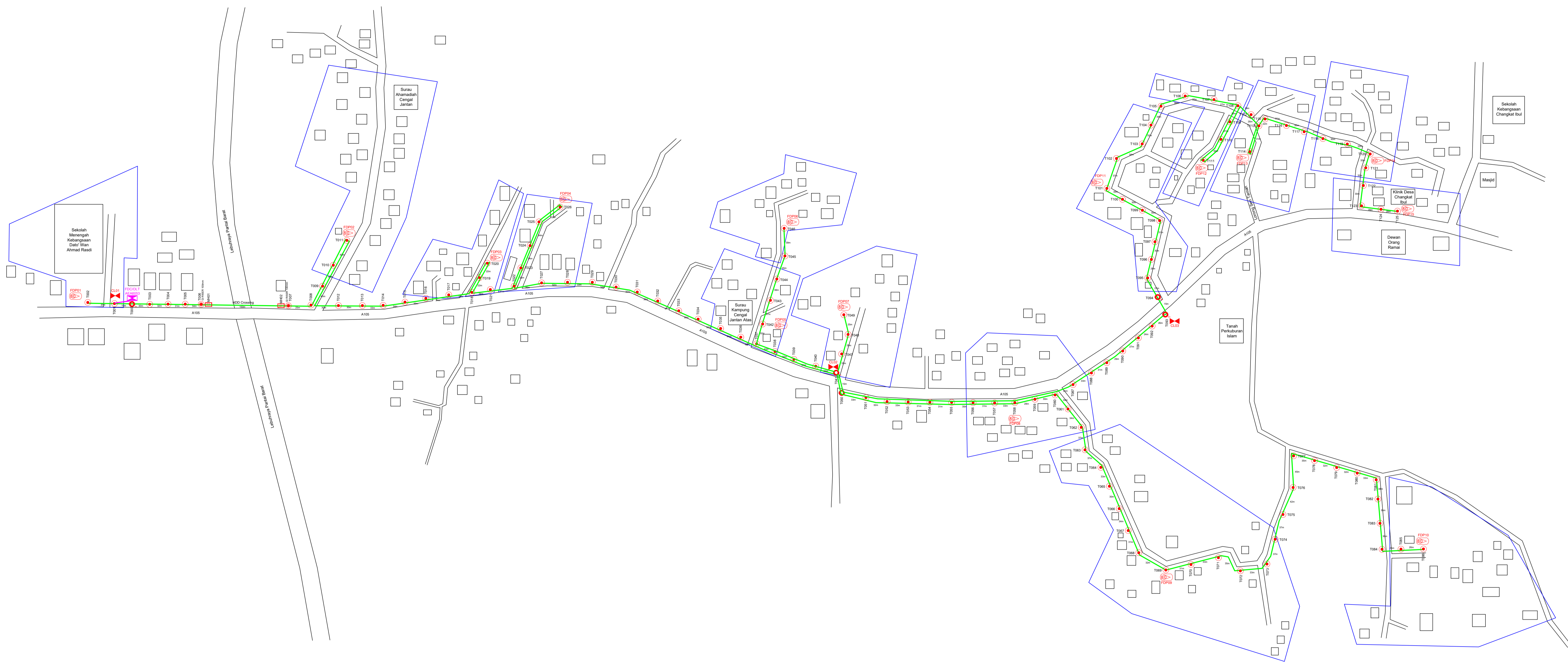


SUPPLY, INSTALLATION AND COMMISSIONING OF FTTX NETWORK INFRASTRUCTURE FOR ALLO TECHNOLOGY SDN BHD POP 2 PROJECT (D-SIDE) - PMU TPNG FOR AEA6053-SEKOLAH MENENGAH KEBANGSAAN DATO' WAN AHMAD RASDI



7.0 3rd PARTIES DEPENDENCIES

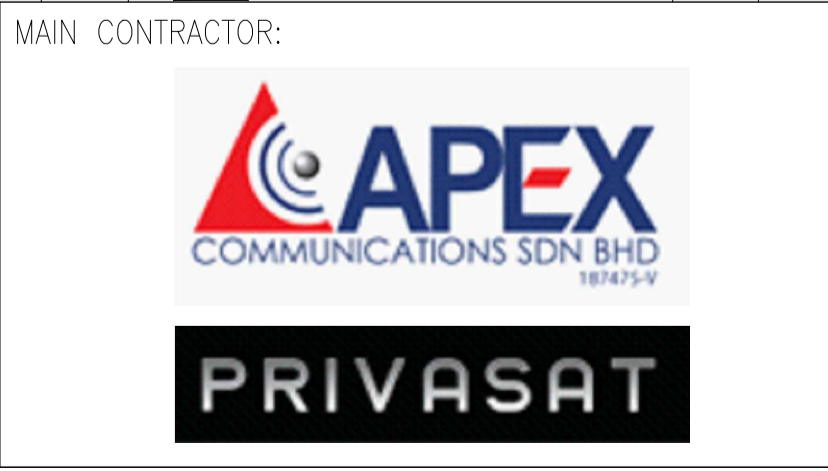
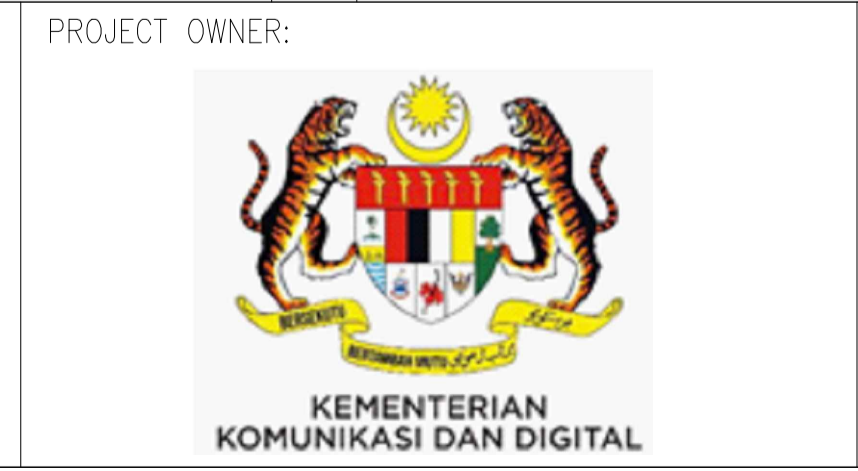
NO	LOCAL COUNCIL / AUTHORITY	REMARK
1	Majlis Perbandaran Taiping	2281m
2	JKR Daerah LMS Taiping	1655m



12C FOC	Installed 1:4 / 1:8 / 1:32 splitter	○	Installed Pole (9m)	5	s	Suspension	150	JB30	New Manhole (PIT)	—	Micro-Trenching (Meter)	MH1	MH NO.	
24C FOC	5760m Installed Patch Cord	●	Installed Pole (7.5M)	121	t	Tension	200	C7	New Manhole(JRC7)	—	Temporary Infra (Meter)	TKS-1	Existing TNB Pole NO.	
48C FOC	20m FDC	1	Installed Pole (6.7M)		⊗	Pole Ring	15		FDP Boundary	15	⊙	Loop / Coil (Meter)	P001	New Pole NO.
96C FOC	Closure	3	Existing TNB Pole		⊗	FDP with (1:8) splitter	15		HDD (Meter)	150m	#	Active Outdoor Cabinet	CL01	Closure NO.
144C FOC	Existing Closure	□	Installed Riser	2	⊞	Existing Manhole			Open Cut (Meter)		C01	FDC NO.	DP1	FDP NO.

ACTUAL HOMEPASS : 120

KEY PLAN:

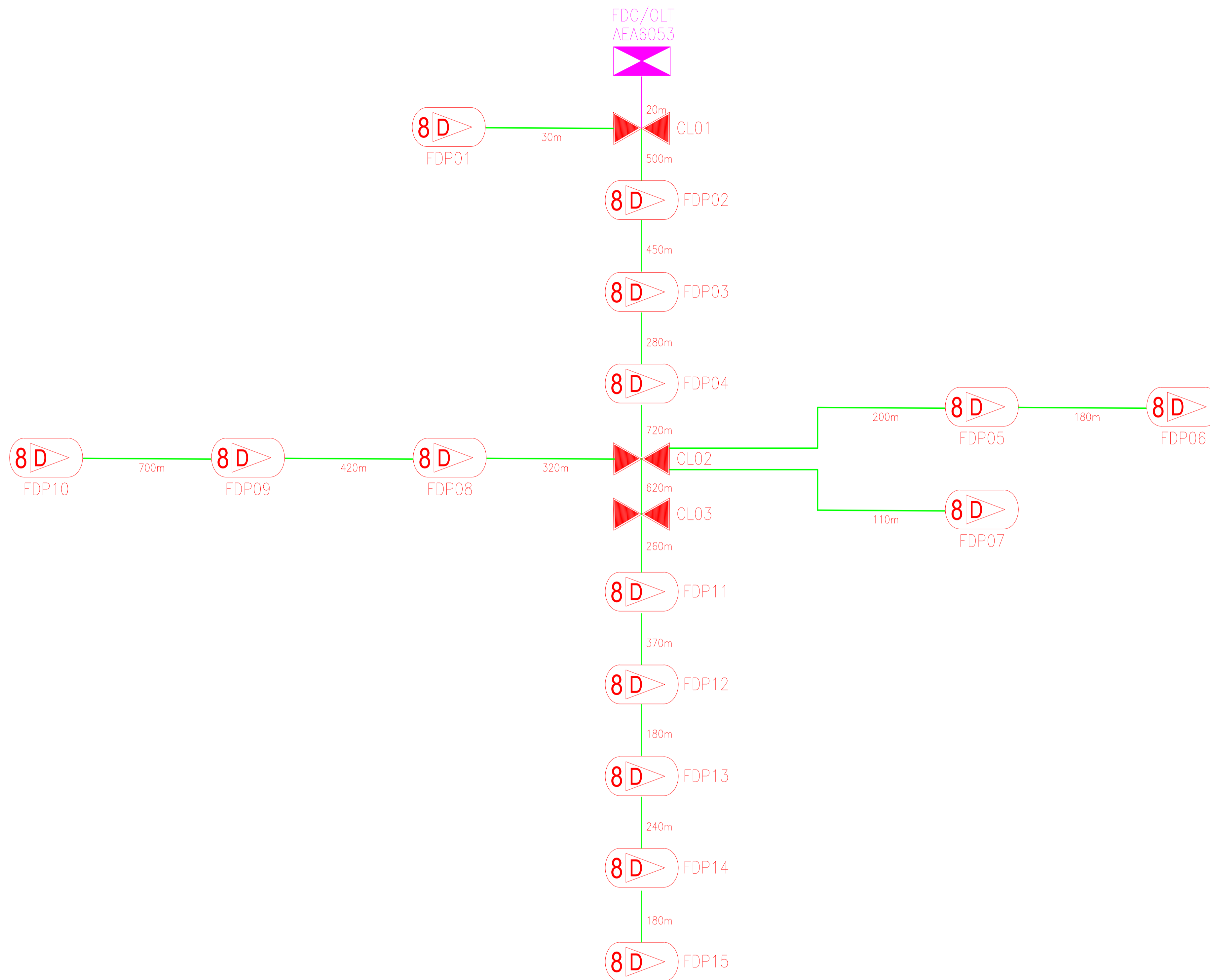


allo!
 The Smarter Connection
 ALLO TECHNOLOGY SDN BHD
 Level 3, Left Wing,
 College of Computer Science & Information Technology (CSIT)
 UNITEN, 43000 Kajang, Selangor
 TEL: 1 300-38-8000
 FAK: (60) 3 8800 5221
 E-MAIL : info@allo.my WEBSITE: HTTP://WWW.ALLO.MY

PROJECT TITLE:
**D-SIDE AEA6053
 SEKOLAH MENENGAH
 KEBANGSAAN
 DATO' WAN AHMAD RASDI**

DRAWING TITLE:
 CONSTRUCTION DRAWING
 AEA6053
 SEKOLAH MENENGAH KEBANGSAAN
 DATO' WAN AHMAD RASDI
 PROJECT PHASE:
 POP 2

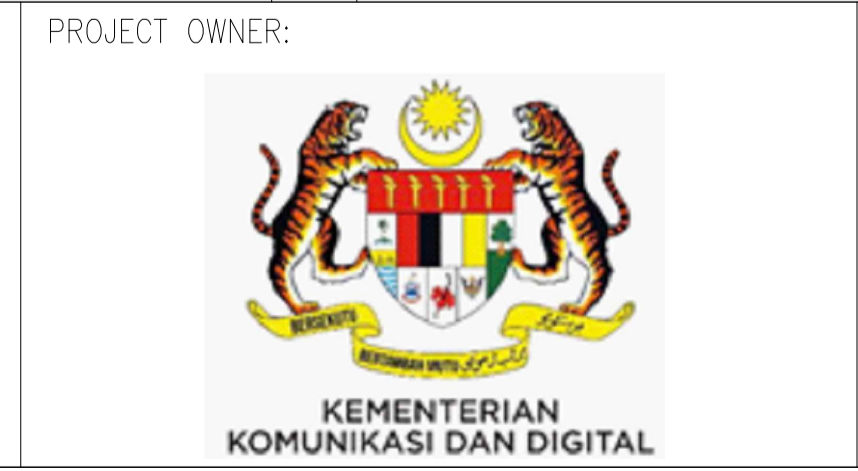
Design By : NORNAJHAH	Date : 16/07/2024
Drawn By : NORNAJHAH	Scale : NOT TO SCALE
Checked By : HAZMI	Job Number : 1
DRAWING NUMBER : AEA6053-CD-01	Sheet : 1/1
THIS PRINT AND ITS COPYRIGHT ARE THE PROPERTY OF ALLO TECHNOLOGY SDN BHD	
Size : A1	



12C FOC	Installed 1:4 / 1:8 / 1:32 splitter	○	Installed Pole (9m)	5	s	Suspension	150	UB30	New Manhole (PIT)	—	Micro-Trenching (Meter)	MH1	MH NO.	
24C FOC	5760m Installed Patch Cord	●	Installed Pole (7.5M)	121	t	Tension	200	C7	New Manhole(JRC7)	2	Temporary Infra (Meter)	TKS-1	Existing TNB Pole NO.	
48C FOC	20m	⊠	Installed Pole (6.7M)		⊙	Pole Ring	15		FDP Boundary	15	Loop / Coil (Meter)	P001	New Pole NO.	
96C FOC		⊠	Existing TNB Pole		8D>	FDP with (1:8) splitter	15		HDD (Meter)	150m	#	Active Outdoor Cabinet	CL01	Closure NO.
144C FOC		⊠	Installed Riser	2	⊠	Existing Manhole			Open Cut (Meter)		C01	FDC NO.	DP1	FDP NO.

ACTUAL HOMEPASS : 120

KEY PLAN:



PROJECT TITLE:
**D-SIDE AEA6053
 SEKOLAH MENENGAH
 KEBANGSAAN
 DATO' WAN AHMAD RASDI**

DRAWING TITLE:
 SINGLE LINE DIAGRAM
 AEA6053
 SEKOLAH MENENGAH KEBANGSAAN
 DATO' WAN AHMAD RASDI

PROJECT PHASE:
 POP 2

Design By : NORNAJHAH	Date : 16/07/2024
Drawn By : NORNAJHAH	Scale : NOT TO SCALE
Checked By : HAZMI	Job Number : 1
DRAWING NUMBER : AEA6053-SLD-01	Sheet : 1/1
THIS PRINT AND ITS COPYRIGHT ARE THE PROPERTY OF ALLO TECHNOLOGY SDN BHD	
Size : A1	