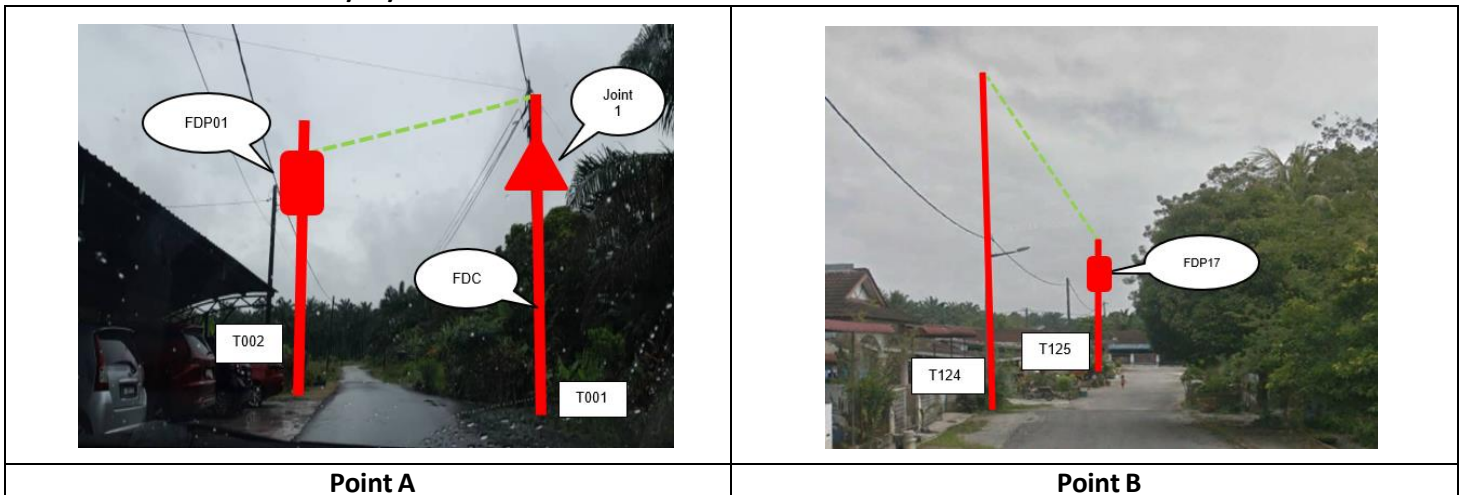


## TECHNICAL PROPOSAL

### POP2 ABD5109 SEKOLAH JENIS KEBANGSAAN (TAMIL) NATESA PILLAY (D-SIDE)

**Company Name** : KNZ ENGINEERING SDN BHD.  
**Company Address** : NO 60 & 60 A JALAN KLEBANG INDAH 1 MEDAN KLEBANG INDAH 30010  
 IPOH PERAK  
**Prepared By** : SEVANTHI A/P SELVAM  
**Date** : 19/12/2024



#### Starting Point

**Site / Boundary Name** : Teluk Intan  
**Address** : SJK (T) Natesa Pillay, Jalan Bidor, Batu 14 Kampung Ayer Hitam, 36700 Teluk Intan, Perak  
**District** : Teluk Intan  
**Postcode** : 36700  
**State** : Perak  
**GPS Coordinate** : 4.008596733, 101.1908214  
**LRD** : A

#### End Point

**Site / Boundary Name** : Teluk Intan  
**Address** : Lorong Maju 4, Changkat Jong, 36020 Teluk Intan, Perak  
**District** : Teluk Intan  
**Postcode** : 36020  
**State** : Perak  
**GPS Coordinate** : 4.005746958, 101.1767912  
**LRD** : B



PROJEK PENYEDIAAN DAN PENYELENGGARAAN POINT OF PRESENCE (POP) FASA 2: HAB INFRASTRUKTUR GENTIAN OPTIK BERHAMPIRAN DENGAN SEKOLAH, KAWASAN PERINDUSTRIAN, PREMIS KERAJAAN DAN KOMUNITI SEKITARNYA OLEH KEMENTERIAN KOMUNIKASI MALAYSIA – ZON UTARA (KKMM.400-11/17/132(1))



## 1.0 WORK SUMMARY

NO	PROPOSED DISTANCE AND METHOD	UNIT	QUANTITY
1	Horizontal Directional Drilling (HDD)	m	120
2	Carriage Way Open Trench (CW)	m	0
3	Grass Verge Open Trenching (GV)	m	0
4	Micro Trenching (MT)	m	0
Total			0

NO	OTHER INFORMATION	UNIT	QUANTITY
1	Installation of Short Span ADSS Fibre Cables	m	5650
2	Install New Pole	ea	125
3	Install New JRC7 Manhole	ea	4
4	Install GI Riser 100mm	ea	4
5	Install Fiber Distribution Point	ea	17
6	Install Closure	ea	3
7	Estimated Time Required for Completion	days	30

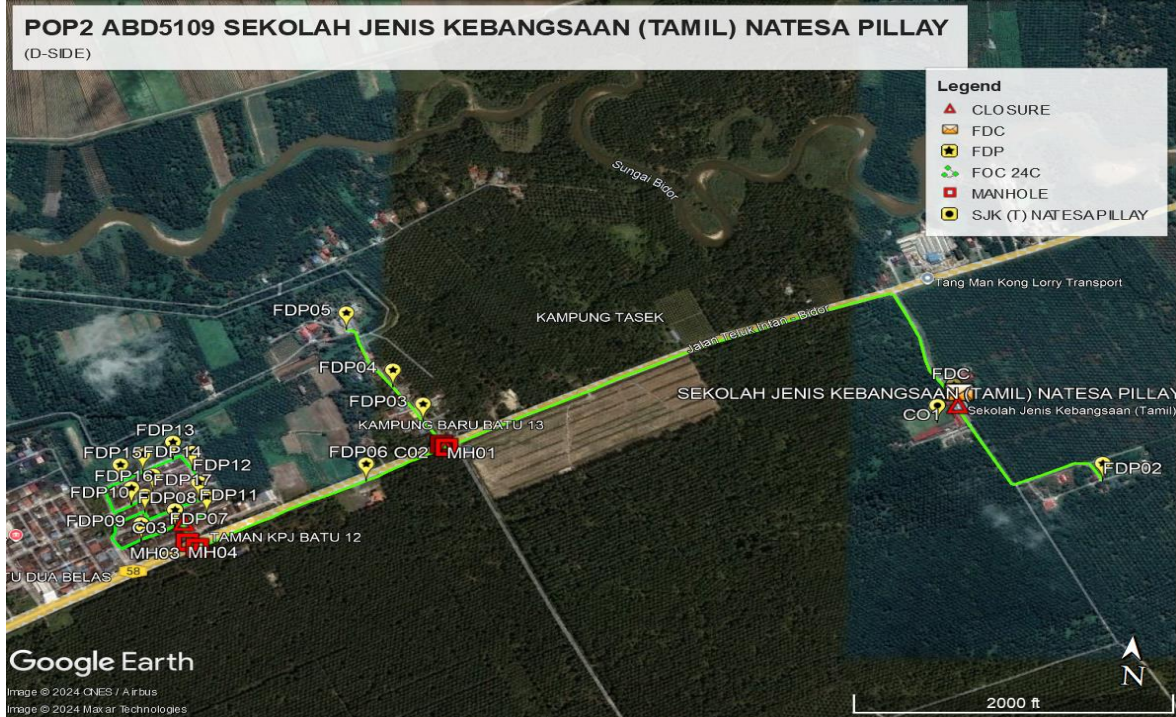
## 2.0 LOCAL AUTHORITY SUMMARY

Daerah Hilir Perak

Bil	Items	Owner	Quantity	Distance
1	HDD	JKR	2	120m
		Majlis	-	-
		Estate / Private Land	-	-
2	New Pole	JKR	62	2400m
		Majlis	43	1920m
		Estate / Private Land	20	800m
3	Existing TNB Pole	JKR		
		Majlis		
		Estate / Private Land	-	-
Total				5240m

Site Plan -KMZ (Overview site area)

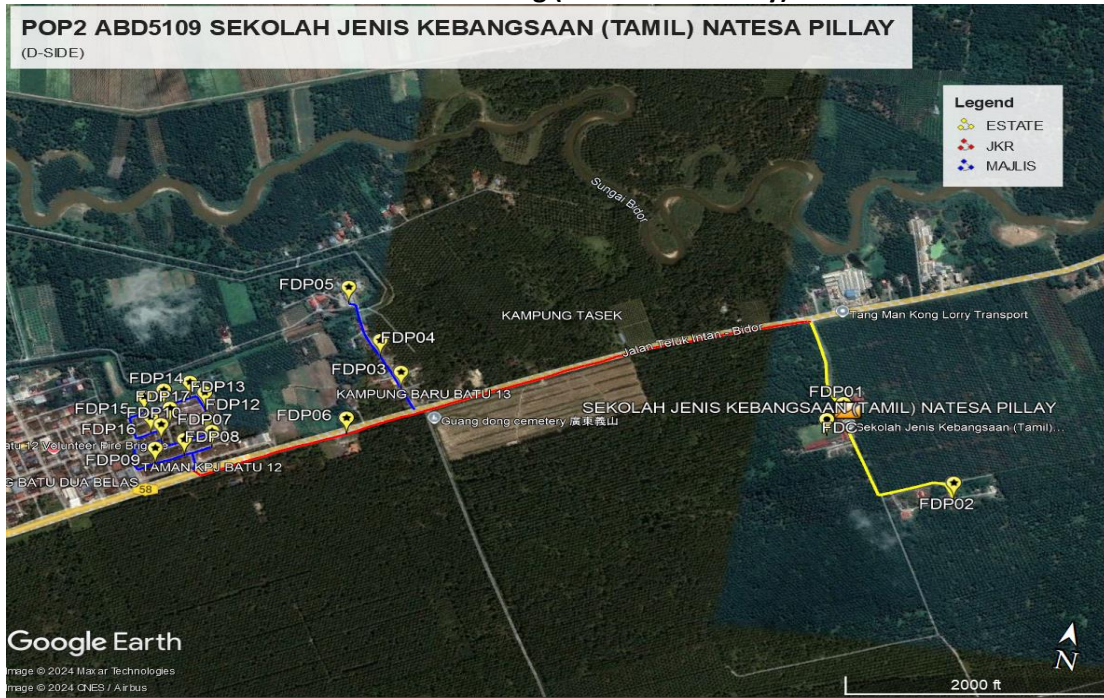
Proposed FDP , Manhole and Closure



Proposed New Pole



**Site Plan - KMZ Routing (All Local Authority)**



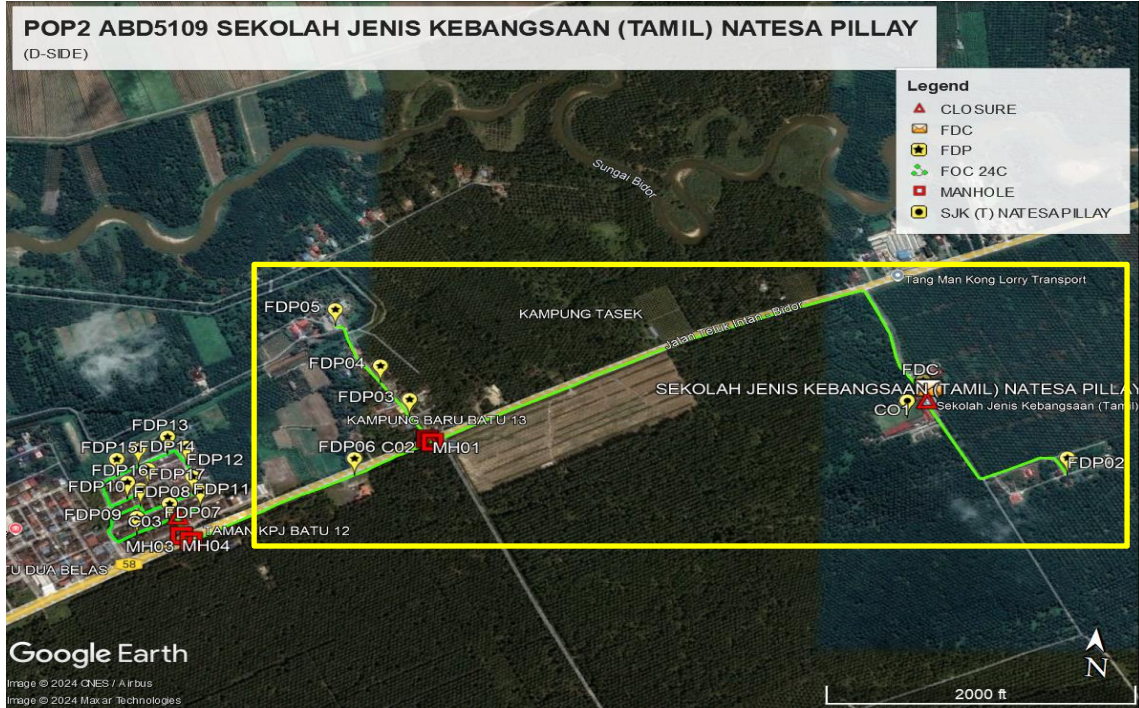
**Yellow Color- Estate Road**

**Red Colour – JKR Road**

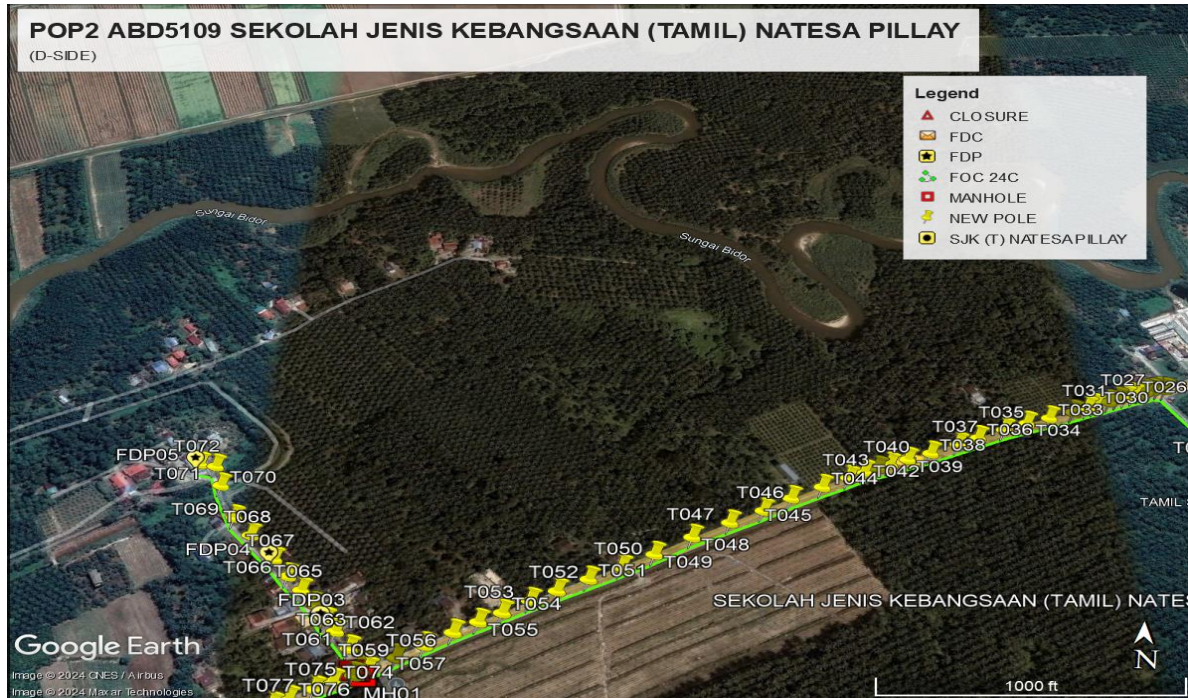
**Blue Colour - Majlis Road**

Site Plan – KMZ Routing (All site area)

Route 1

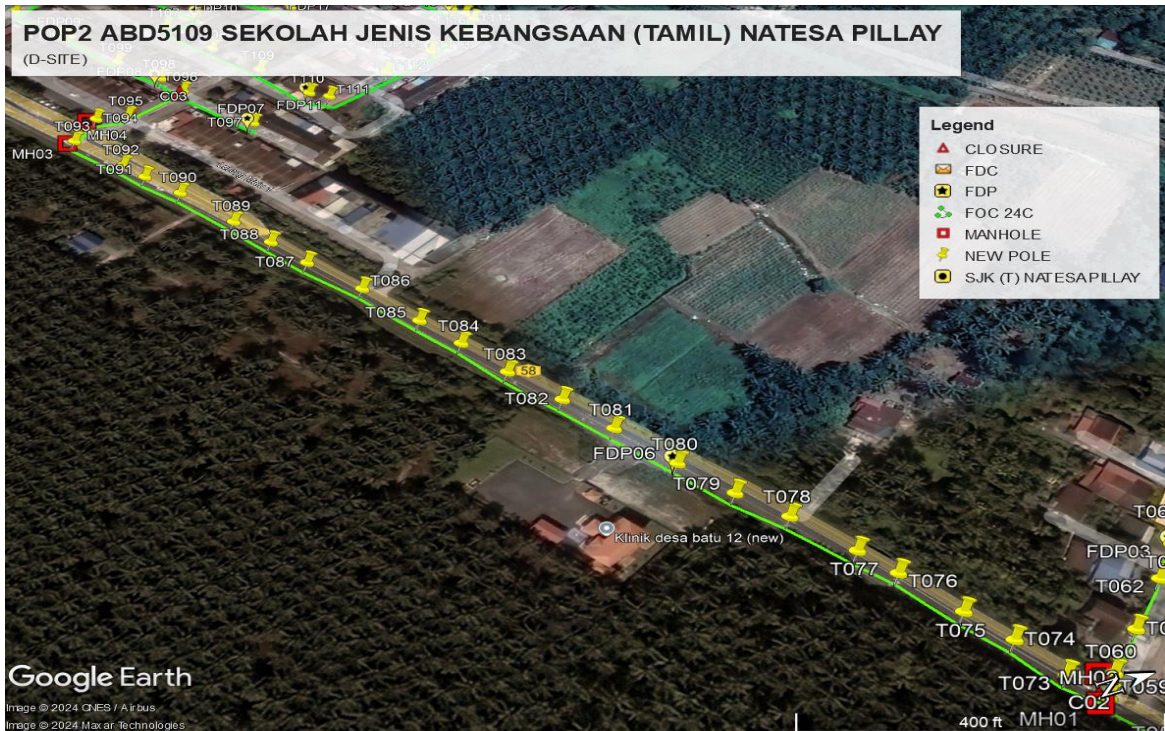
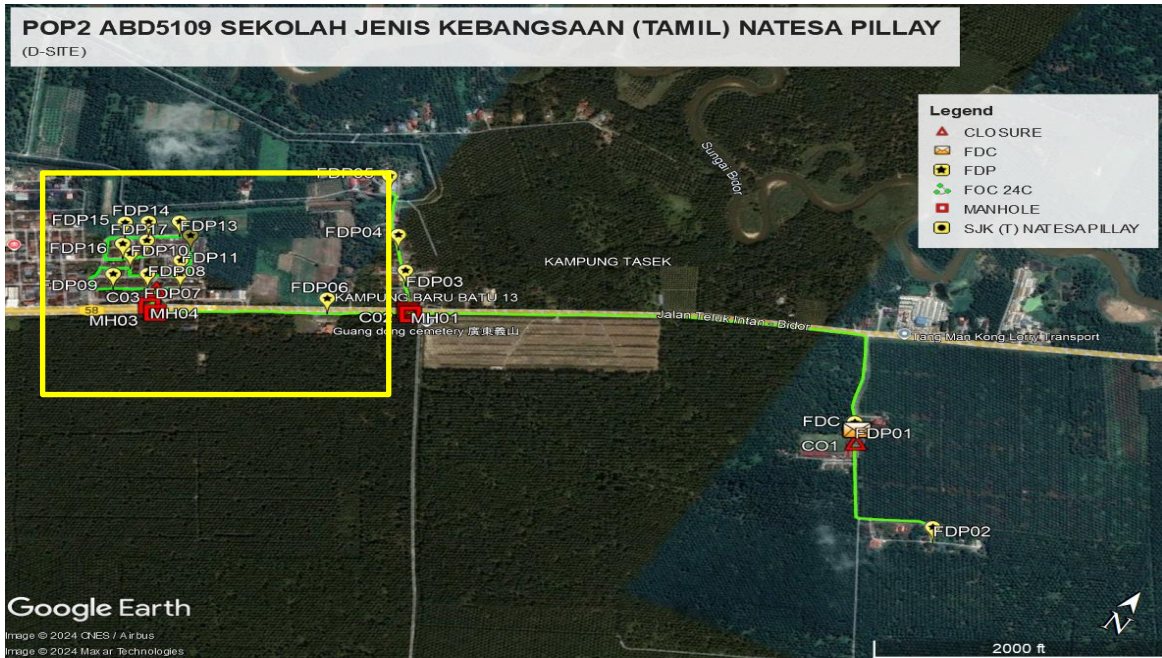


Route 1.1

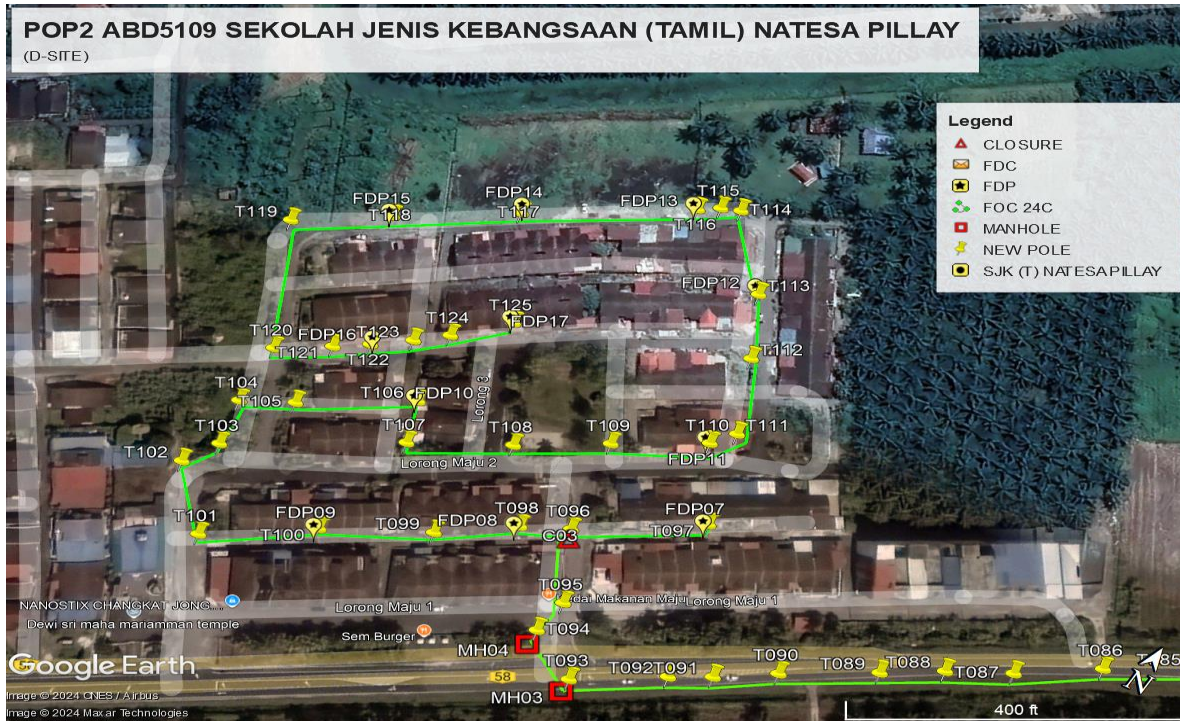


**Route 1.2**

Route 2



Route 2.1



Route 2.2

### 3.0 PROPOSED NEW POLE

Proposed New Pole Coordinate					
No.	Pole Number	Distance (m)	Latitude-Y	Longitude-X	Local Authority
1	T001	40	4.008596733	101.1908214	Hup Seng Estate
2	T002	40	4.008663311	101.1907402	Hup Seng Estate
3	T003	40	4.008376536	101.1909049	Hup Seng Estate
4	T004	40	4.008226761	101.1909957	Hup Seng Estate
5	T005	40	4.007889554	101.191203	Hup Seng Estate
6	T006	40	4.007612274	101.1913726	Hup Seng Estate
7	T007	40	4.007261899	101.1915939	Hup Seng Estate
8	T008	40	4.006898658	101.1918171	Hup Seng Estate
9	T009	40	4.006929388	101.1918666	Hup Seng Estate
10	T010	40	4.007098932	101.1922315	Hup Seng Estate
11	T011	40	4.007267368	101.1925691	Hup Seng Estate
12	T012	40	4.007443151	101.1928823	Hup Seng Estate
13	T013	40	4.007451961	101.193152	Hup Seng Estate
14	T014	40	4.00725264	101.1933023	Hup Seng Estate
15	T015	40	4.007093212	101.193415	Hup Seng Estate
16	T016	40	4.009028017	101.190533	Hup Seng Estate
17	T017	40	4.009321406	101.1902773	Hup Seng Estate
18	T018	40	4.009556426	101.1901896	Hup Seng Estate
19	T019	40	4.0100397	101.1900625	Hup Seng Estate
20	T020	40	4.010554499	101.189805	Hup Seng Estate
21	T021	40	4.010997014	101.1895652	Hup Seng Estate
22	T022	40	4.011007499	101.1894989	JKR Hilir Perak
23	T023	40	4.010981585	101.1894294	JKR Hilir Perak
24	T024	40	4.010963754	101.1893668	JKR Hilir Perak
25	T025	40	4.010941967	101.1893061	JKR Hilir Perak
26	T026	40	4.010906615	101.1892343	JKR Hilir Perak

### 3.0 PROPOSED NEW POLE

Proposed New Pole Coordinate					
No.	Pole Number	Distance (m)	Latitude	Longitude	Local Authority
27	T027	40	4.010874933	101.1891511	JKR Hilir Perak
28	T028	40	4.010845242	101.1890661	JKR Hilir Perak
29	T029	40	4.010802368	101.188975	JKR Hilir Perak
30	T030	40	4.0107415	101.1888235	JKR Hilir Perak
31	T031	40	4.010704245	101.1887422	JKR Hilir Perak
32	T032	40	4.010636187	101.1885874	JKR Hilir Perak
33	T033	40	4.010532564	101.1883312	JKR Hilir Perak
34	T034	40	4.010439641	101.18809	JKR Hilir Perak
35	T035	40	4.010334321	101.1878526	JKR Hilir Perak
36	T036	40	4.01020975	101.1875812	JKR Hilir Perak
37	T037	40	4.010115853	101.1873756	JKR Hilir Perak
38	T038	40	4.009982222	101.1870958	JKR Hilir Perak
39	T039	40	4.00988862	101.1868635	JKR Hilir Perak
40	T040	40	4.009811334	101.1866787	JKR Hilir Perak
41	T041	40	4.009752404	101.1865548	JKR Hilir Perak
42	T042	40	4.009698526	101.1864223	JKR Hilir Perak
43	T043	40	4.009607717	101.1862666	JKR Hilir Perak
44	T044	40	4.009471513	101.186003	JKR Hilir Perak
45	T045	40	4.009309562	101.1856967	JKR Hilir Perak
46	T046	40	4.009131093	101.1854239	JKR Hilir Perak
47	T047	40	4.008960169	101.1851006	JKR Hilir Perak
48	T048	40	4.008762631	101.1847431	JKR Hilir Perak
49	T049	40	4.008530323	101.1843906	JKR Hilir Perak
50	T050	40	4.008356924	101.1840847	JKR Hilir Perak
51	T051	40	4.008184973	101.1837858	JKR Hilir Perak
52	T052	40	4.008023452	101.183502	JKR Hilir Perak
53	T053	40	4.007897469	101.1832634	JKR Hilir Perak

### 3.0 PROPOSED NEW POLE

Proposed New Pole Coordinate					
No.	Pole Number	Distance (m)	Latitude	Longitude	Local Authority
54	T054	40	4.007744028	101.183018	JKR Hilir Perak
55	T055	40	4.007627027	101.1828119	JKR Hilir Perak
56	T056	40	4.007494779	101.1825945	JKR Hilir Perak
57	T057	40	4.007344612	101.1823473	JKR Hilir Perak
58	T058	40	4.00720269	101.1821007	JKR Hilir Perak
59	T059	40	4.007055089	101.1818603	JKR Hilir Perak
60	T060	40	4.007128852	101.1817878	Majlis Perbandaran Teluk Intan
61	T061	40	4.007297473	101.1816631	Majlis Perbandaran Teluk Intan
62	T062	40	4.007491821	101.1815114	Majlis Perbandaran Teluk Intan
63	T063	40	4.007617461	101.1813986	Majlis Perbandaran Teluk Intan
64	T064	40	4.007798521	101.1812733	Majlis Perbandaran Teluk Intan
65	T065	40	4.007969206	101.1811278	Majlis Perbandaran Teluk Intan
66	T066	40	4.00813544	101.1809761	Majlis Perbandaran Teluk Intan
67	T067	40	4.00833491	101.1808155	Majlis Perbandaran Teluk Intan
68	T068	40	4.008625375	101.1805493	Majlis Perbandaran Teluk Intan
69	T069	40	4.008847856	101.1803536	Majlis Perbandaran Teluk Intan
70	T070	40	4.009279487	101.1801392	Majlis Perbandaran Teluk Intan
71	T071	40	4.009539485	101.1800384	Majlis Perbandaran Teluk Intan
72	T072	40	4.009562178	101.1798813	Majlis Perbandaran Teluk Intan
73	T073	40	4.006986659	101.1817464	JKR Hilir Perak
74	T074	40	4.00691008	101.1815747	JKR Hilir Perak
75	T075	40	4.006816989	101.1814252	JKR Hilir Perak
76	T076	40	4.006696609	101.1812202	JKR Hilir Perak
77	T077	40	4.006616883	101.1810921	JKR Hilir Perak
78	T078	40	4.006479256	101.1808825	JKR Hilir Perak
79	T079	40	4.006357617	101.1807214	JKR Hilir Perak
80	T080	40	4.006237201	101.1805196	JKR Hilir Perak
81	T081	40	4.006104585	101.1802725	JKR Hilir Perak
82	T082	40	4.005992029	101.1800556	JKR Hilir Perak
83	T083	40	4.005860769	101.1798331	JKR Hilir Perak
84	T084	40	4.005754151	101.179606	JKR Hilir Perak

### 3.0 PROPOSED NEW POLE

Proposed New Pole Coordinate					
No.	Pole Number	Distance (m)	Latitude	Longitude	Local Authority
85	T085	40	4.005647819	101.1794121	JKR Hilir Perak
86	T086	40	4.005494117	101.1791523	JKR Hilir Perak
87	T087	40	4.005332651	101.1789142	JKR Hilir Perak
88	T088	40	4.005228603	101.1787232	JKR Hilir Perak
89	T089	40	4.005116608	101.1785433	JKR Hilir Perak
90	T090	40	4.004949756	101.1782666	JKR Hilir Perak
91	T091	40	4.004831459	101.1780935	JKR Hilir Perak
92	T092	40	4.004759488	101.177971	JKR Hilir Perak
93	T093	40	4.004589671	101.1777053	JKR Hilir Perak
94	T094	40	4.004700122	101.1775181	Majlis Perbandaran Teluk Intan
95	T095	40	4.004836297	101.177535	Majlis Perbandaran Teluk Intan
96	T096	40	4.005104456	101.1774025	Majlis Perbandaran Teluk Intan
97	T097	40	4.005349821	101.1777786	Majlis Perbandaran Teluk Intan
98	T098	40	4.005029612	101.1772525	Majlis Perbandaran Teluk Intan
99	T099	40	4.004864625	101.177026	Majlis Perbandaran Teluk Intan
100	T100	40	4.004687262	101.1766956	Majlis Perbandaran Teluk Intan
101	T101	40	4.004471624	101.1763756	Majlis Perbandaran Teluk Intan
102	T102	40	4.004694282	101.176162	Majlis Perbandaran Teluk Intan
103	T103	40	4.004817494	101.1762283	Majlis Perbandaran Teluk Intan
104	T104	40	4.005001853	101.1761832	Majlis Perbandaran Teluk Intan
105	T105	40	4.005089066	101.1763474	Majlis Perbandaran Teluk Intan
106	T106	40	4.005301355	101.1766919	Majlis Perbandaran Teluk Intan
107	T107	40	4.005134525	101.176752	Majlis Perbandaran Teluk Intan
108	T108	40	4.00530501	101.1770608	Majlis Perbandaran Teluk Intan
109	T109	40	4.005474423	101.1773333	Majlis Perbandaran Teluk Intan
110	T110	40	4.005643877	101.177613	Majlis Perbandaran Teluk Intan
111	T111	40	4.005723185	101.177671	Majlis Perbandaran Teluk Intan



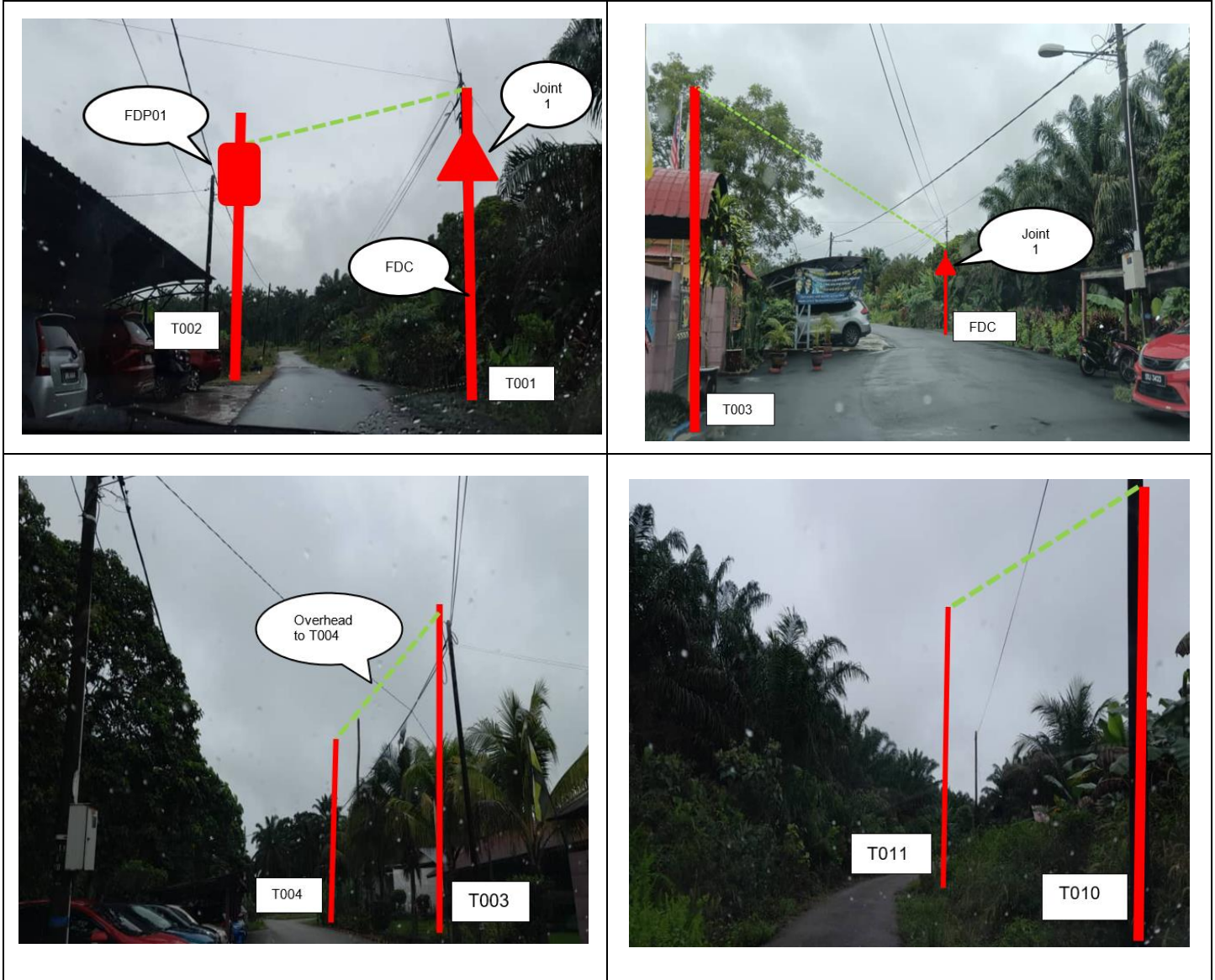
PROJEK PENYEDIAAN DAN PENYELENGGARAAN POINT OF PRESENCE (POP) FASA 2: HAB INFRASTRUKTUR GENTIAN OPTIK BERHAMPIRAN DENGAN SEKOLAH, KAWASAN PERINDUSTRIAN, PREMIS KERAJAAN DAN KOMUNITI SEKITARNYA OLEH KEMENTERIAN KOMUNIKASI MALAYSIA – ZON UTARA (KKMM.400-11/17/132(1))



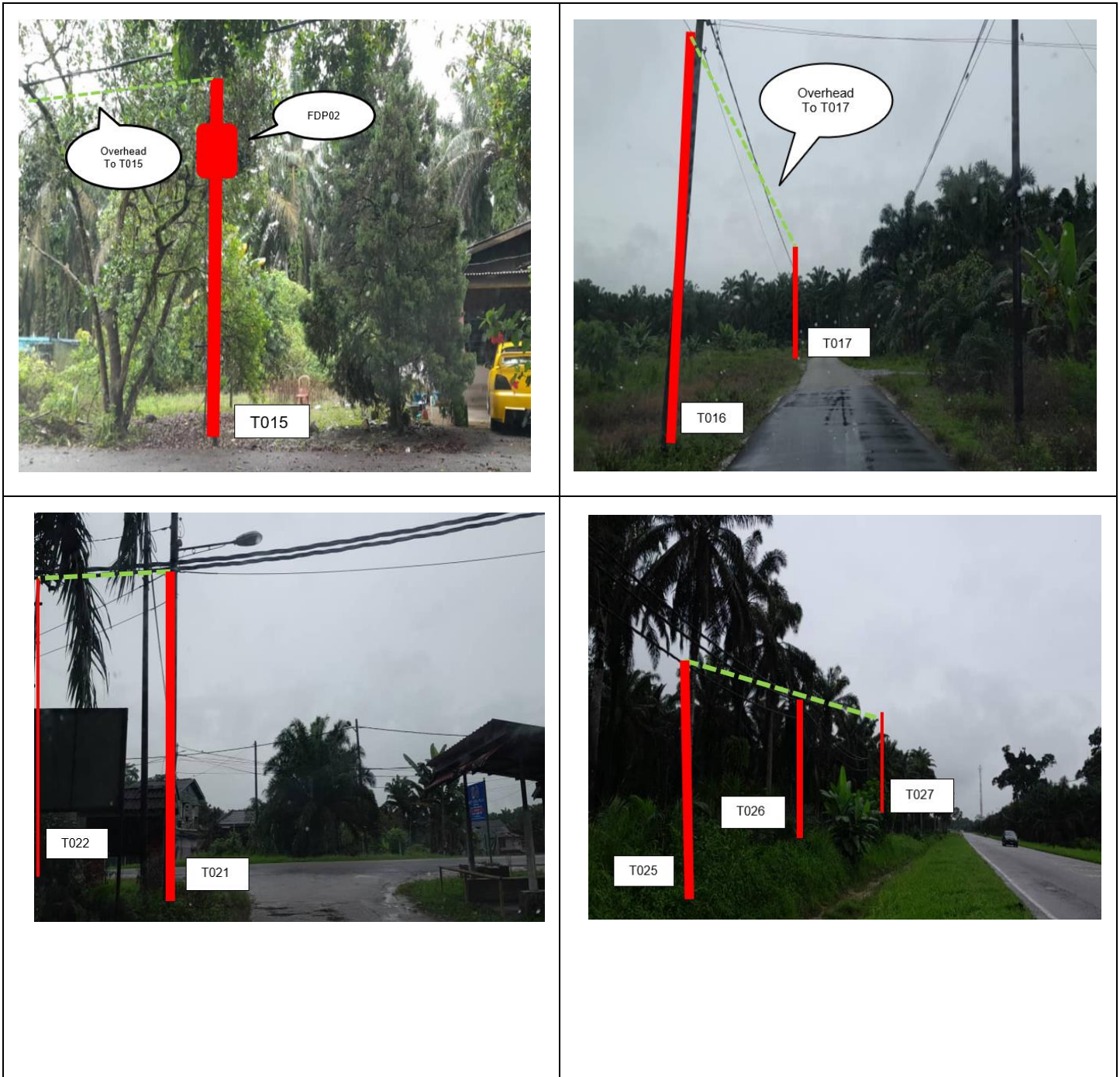
### 3.0 PROPOSED NEW POLE

Proposed New Pole Coordinate					
No.	Pole Number	Distance (m)	Latitude	Longitude	Local Authority
112	T112	40	4.006023554	101.1775512	Majlis Perbandaran Teluk Intan
113	T113	40	4.006276186	101.1774346	Majlis Perbandaran Teluk Intan
114	T114	40	4.006563693	101.1771994	Majlis Perbandaran Teluk Intan
115	T115	40	4.006538533	101.1771348	Majlis Perbandaran Teluk Intan
116	T116	40	4.006493149	101.1770693	Majlis Perbandaran Teluk Intan
117	T117	40	4.006166746	101.176568	Majlis Perbandaran Teluk Intan
118	T118	40	4.005933478	101.1762011	Majlis Perbandaran Teluk Intan
119	T119	40	4.005745019	101.1759131	Majlis Perbandaran Teluk Intan
120	T120	40	4.0052477	101.1761587	Majlis Perbandaran Teluk Intan
121	T121	40	4.005354217	101.1763253	Majlis Perbandaran Teluk Intan
122	T122	40	4.005425643	101.1764285	Majlis Perbandaran Teluk Intan
123	T123	40	4.005513281	101.1765431	Majlis Perbandaran Teluk Intan
124	T124	40	4.005594332	101.1766387	Majlis Perbandaran Teluk Intan
125	T125	40	4.005746958	101.1767912	Majlis Perbandaran Teluk Intan

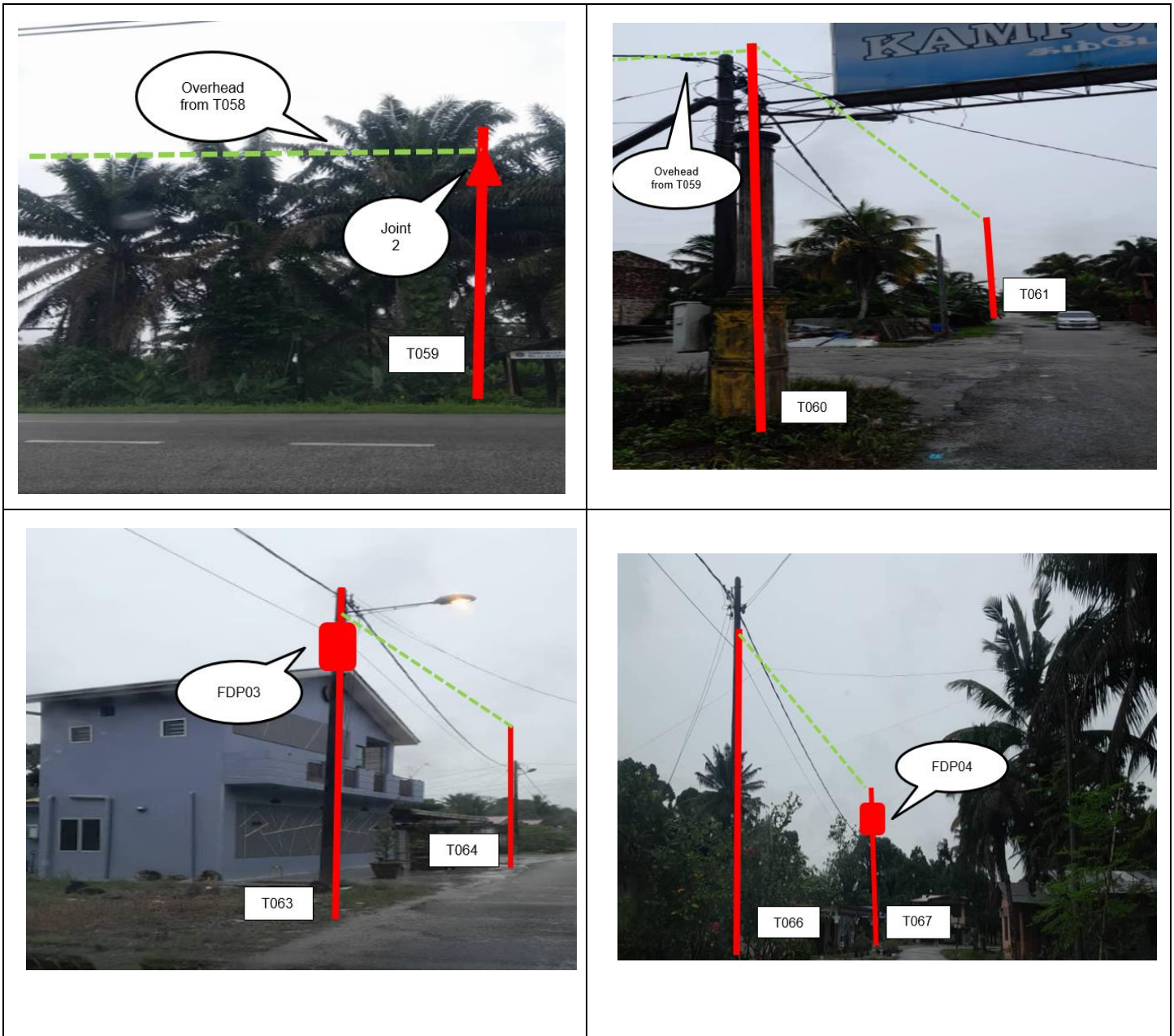
#### 4.0 SITE PHOTOS - PROPOSED NEW POLE



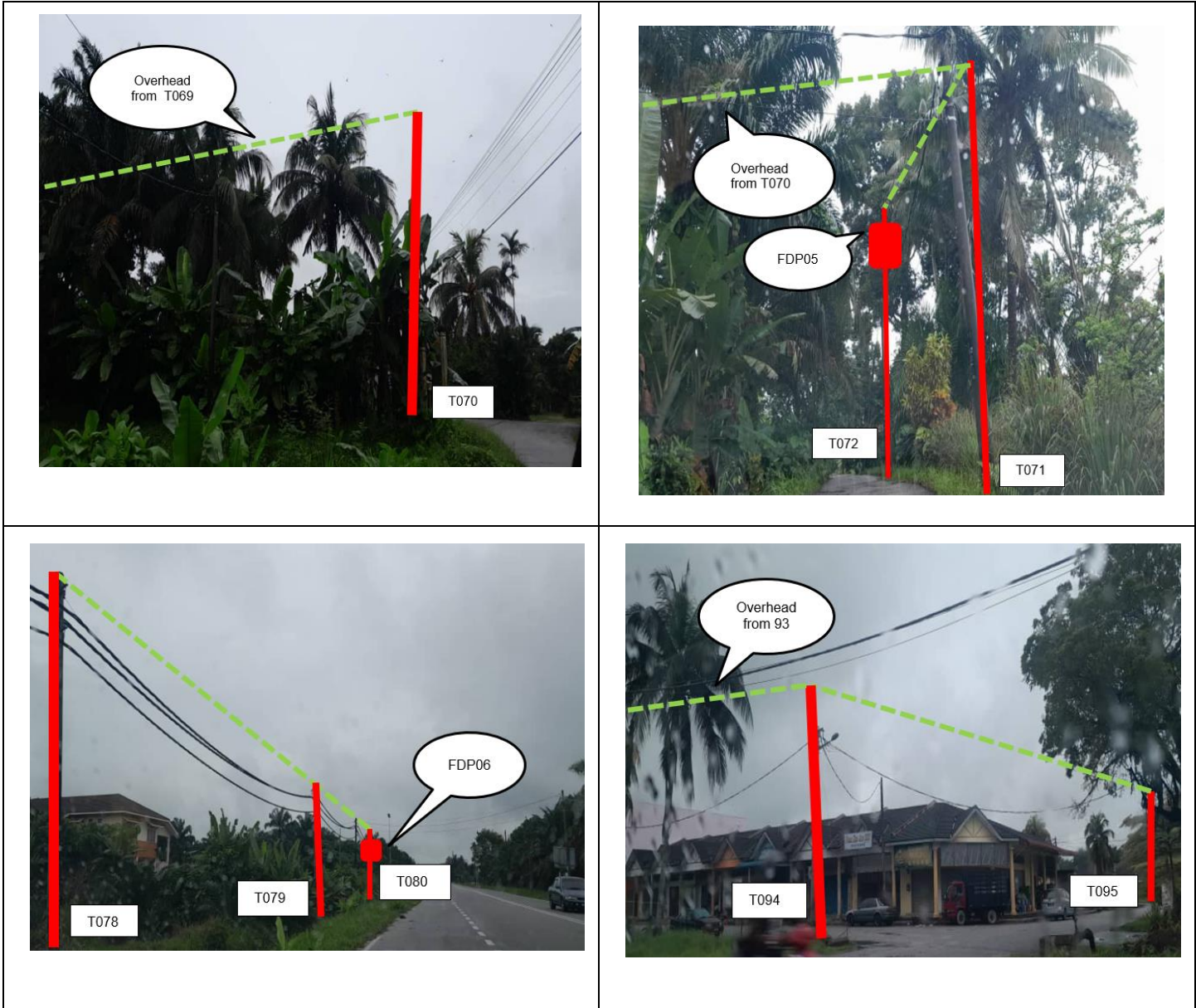
#### 4.0 SITE PHOTOS - PROPOSED NEW POLE



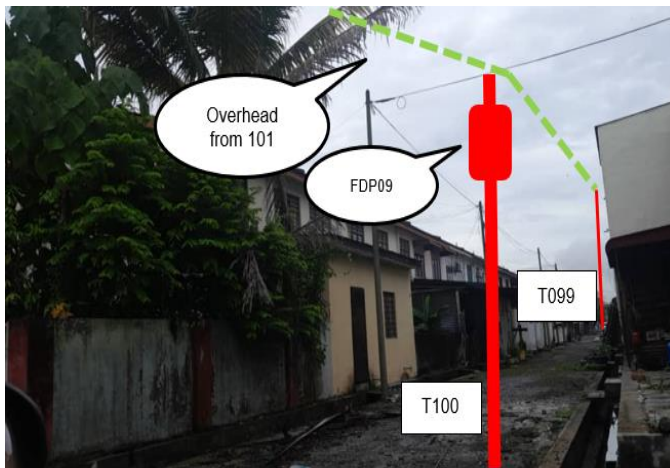
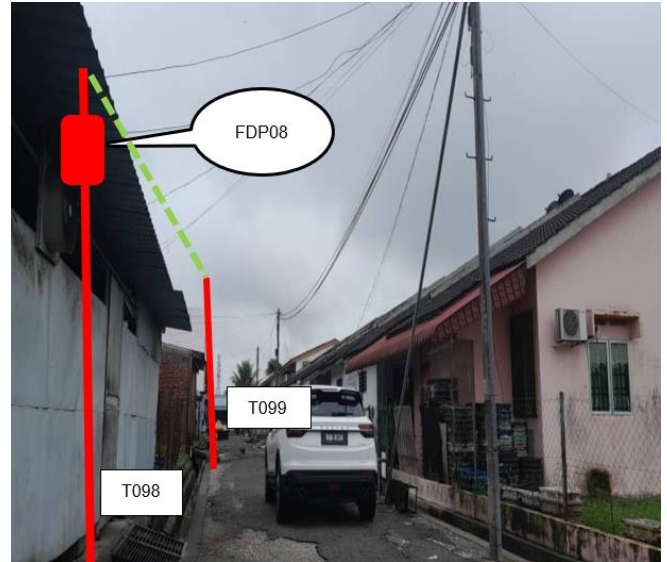
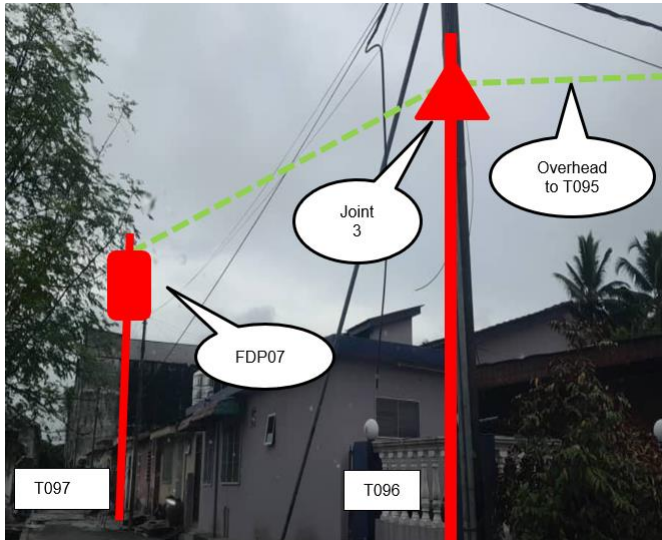
**4.0 SITE PHOTOS - PROPOSED NEW POLE**



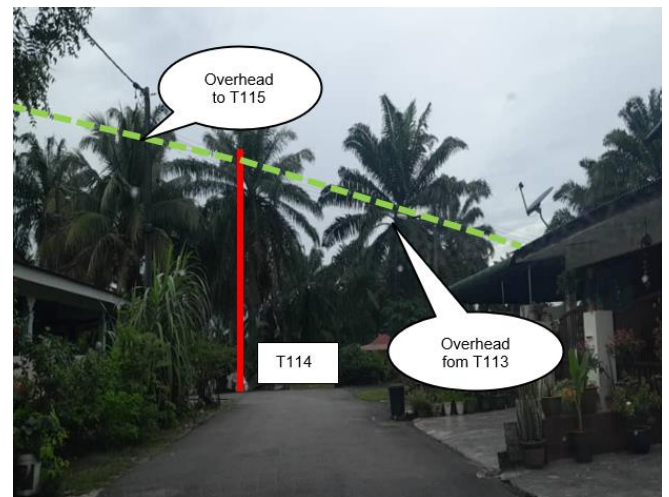
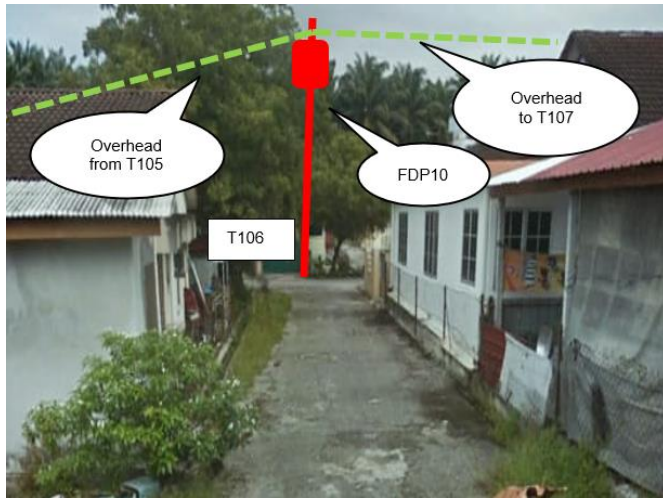
**4.0 SITE PHOTOS - PROPOSED NEW POLE**



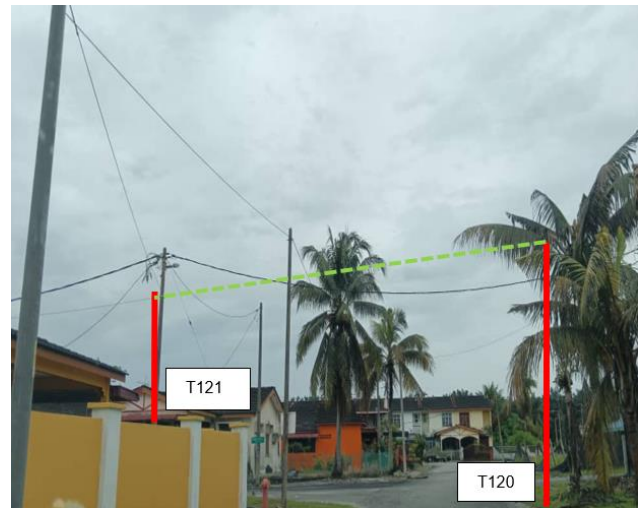
**4.0 SITE PHOTOS - PROPOSED NEW POLE**



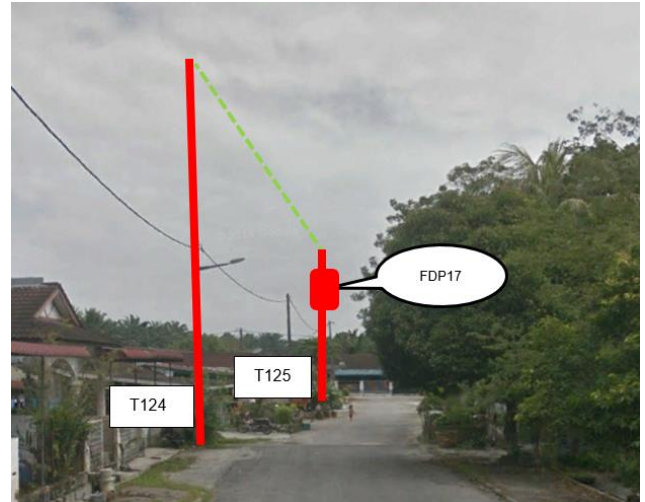
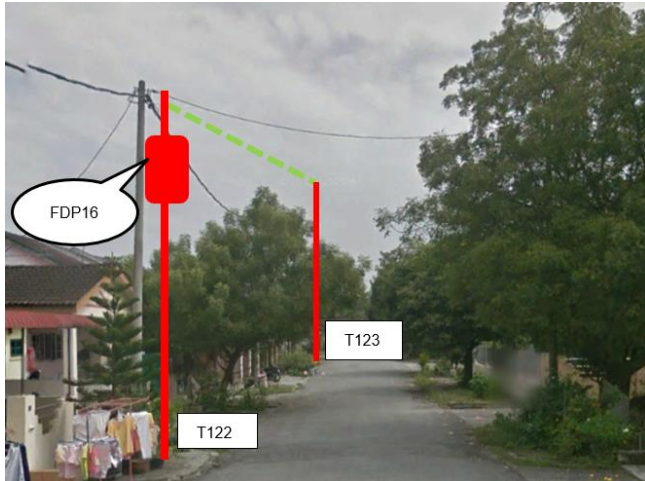
**4.0 SITE PHOTOS - PROPOSED NEW POLE**





**4.0 SITE PHOTOS - PROPOSED NEW POLE**



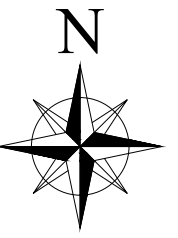
#### 4.0 SITE PHOTOS - PROPOSED NEW POLE



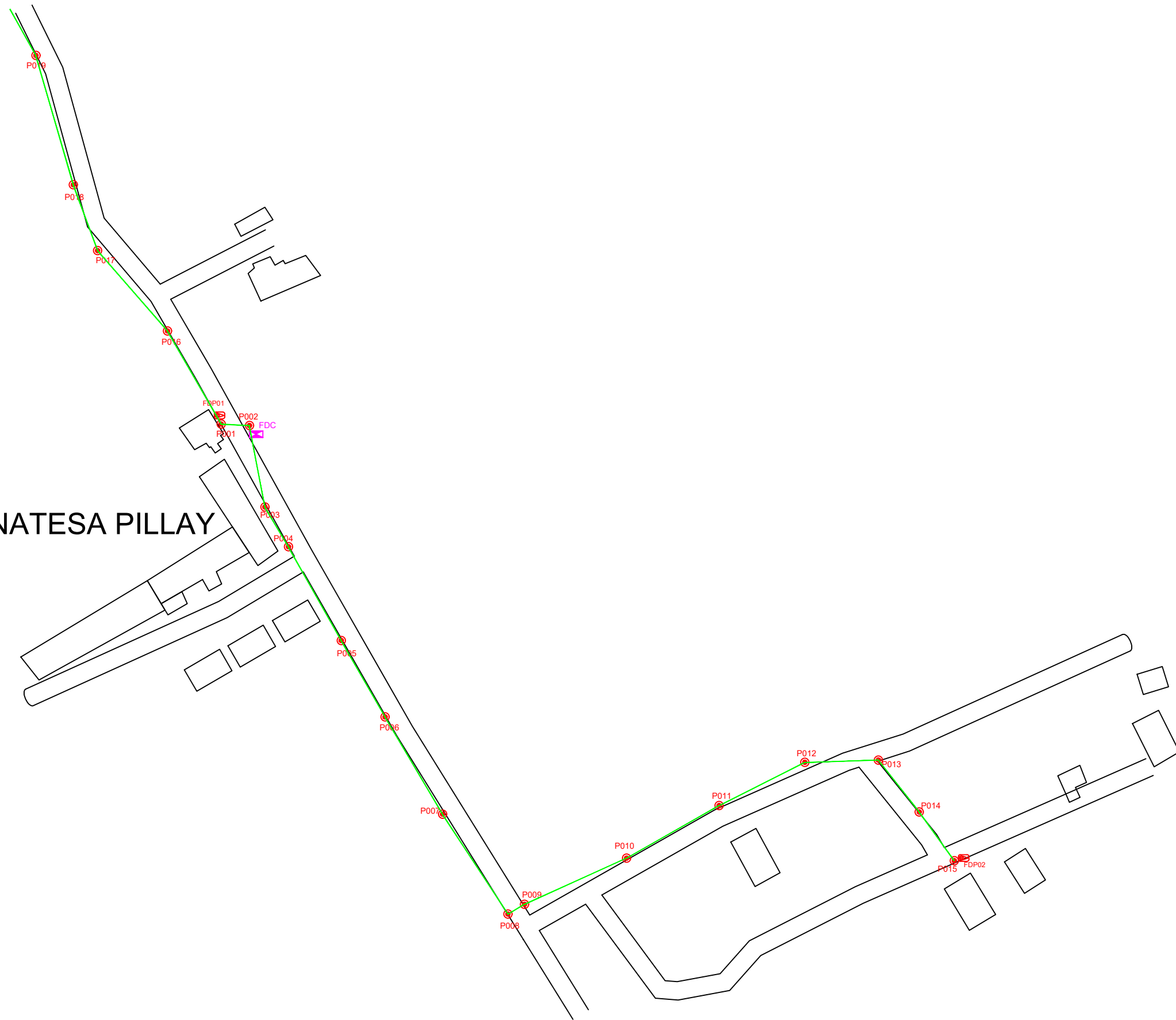
	<p>PROJEK PENYEDIAAN DAN PENYELENGGARAAN POINT OF PRESENCE (POP) FASA 2: HAB INFRASTRUKTUR GENTIAN OPTIK BERHAMPIRAN DENGAN SEKOLAH, KAWASAN PERINDUSTRIAN, PREMIS KERAJAAN DAN KOMUNITI SEKITARNYA OLEH KEMENTERIAN KOMUNIKASI MALAYSIA – ZON UTARA (KKMM.400-11/17/132(1))</p>	
--	--	--

### 5.0 3<sup>rd</sup> PARTIES DEPENDENCIES

NO	LOCAL COUNCIL / AUTHORITY	REMARK
1	Majlis Perbandaran Teluk Intan	1920m
2	JKR Hilir Perak	2520m
3	Estate	800m



# SJK(T) NATESA PILLAY



LEGEND							
	12C FOC		Installed 1:4 splitter in FDC		INSTALLED POLE (9M)		NEW MANHOLE
	24C FOC		FDP		INSTALLED RISER		HOUSE NUMBER
	48C FOC		CLOSURE		SUSPENSION BIG		EXISTING ALLO POLE
	90C FOC		NEW MANHOLE (PT)		SUSPENSION SMALL		LOOP
	144C FOC		INSTALLED POLE		FDC		FDP BOUNDARY
							TENSION SMALL / TENSION BIG
							EXISTING MANHOLE
							CLOSURE NO.
							FDP NO.
							FDC NO.
							MH NO.
							EXISTING TNB POLE NO.
							NEW POLE NO.
							SEE PLAN SHEET
							SEE SHEET XXX

KEY PLAN

PROJECT OWNER

KEPERENTERIAN KOMUNIKASI DAN DIGITAL

MAIN CONTRACTOR

SUB-CONTRACTOR

KNZ ENGINEERING SDN BHD  
 NO. 60 & 60A, Jalan Kiebang Indah 1, Medan Kiebang Indah, 30100 Ipoh, Perak  
 No Tel: 019-3695071  
 Email: admin@knzengineering.com.my  
 Website: www.knzengineering.com.my

PROJECT TITLE

SEKOLAH JENIS KEBANGSAAN ( TAMIL ) NATESA PILLAY

DRAWING TITLE

TP DRAWING POP 2 AT SEKOLAH JENIS KEBANGSAAN (TAMIL) NATESA PILLAY

PROJECT PHASE

PROJECT PHASE 2

DESIGN BY	ZUL FAHMIE	DATE	18/12/2024
DRAWN BY	ZUL FAHMIE	SCALE	NOT TO SCALE
CHECKED BY	AZHAN HARIS	JOB NUMBER	ABD5109
DRAWING NUMBER		ABD5109	
		1/5	
THIS PRINT AND ITS COPYRIGHT ARE THE PROPERTY OF KNZ ENGINEERING SDN. BHD.			
		A3	



TO PAGE 3

FROM PAGE 1

LEGEND	
	12C FOC
	24C FOC
	48C FOC
	90C FOC
	144C FOC
	Installed 1:4 splitter in FDC
	FDP
	CLOSURE
	NEW MANHOLE (PT)
	INSTALLED POLE
	INSTALLED POLE (9M)
	INSTALLED RISER
	SUSPENSION BIG
	SUSPENSION SMALL
	FDC
	NEW MANHOLE
	HOUSE NUMBER
	EXISTING ALLO POLE
	LOOP
	FDP BOUNDARY
	TENSION SMALL / TENSION BIG
	EXISTING MANHOLE
	CLOSURE NO.
	FDP NO.
	FDC NO.
	MH NO.
	EXISTING TNB POLE NO.
	NEW POLE NO.
	SEE A.A. TO THIS POINT
	SEE SHEET XXX

KEY PLAN

PROJECT OWNER



MAIN CONTRACTOR




SUB-CONTRACTOR



KNZ ENGINEERING SDN BHD  
 NO. 60 & 60A, Jalan Klebang Indah 1, Medan Klebang Indah, 30100 Ipoh, Perak  
 No Tel: 019-3695071  
 Email: admin@knzengineering.com.my  
 Website: www.knzengineering.com.my

PROJECT TITLE

SEKOLAH JENIS KEBANGSAAN (TAMIL) NATESA PILLAY

DRAWING TITLE

TP DRAWING POP 2 AT SEKOLAH JENIS KEBANGSAAN (TAMIL) NATESA PILLAY

PROJECT PHASE

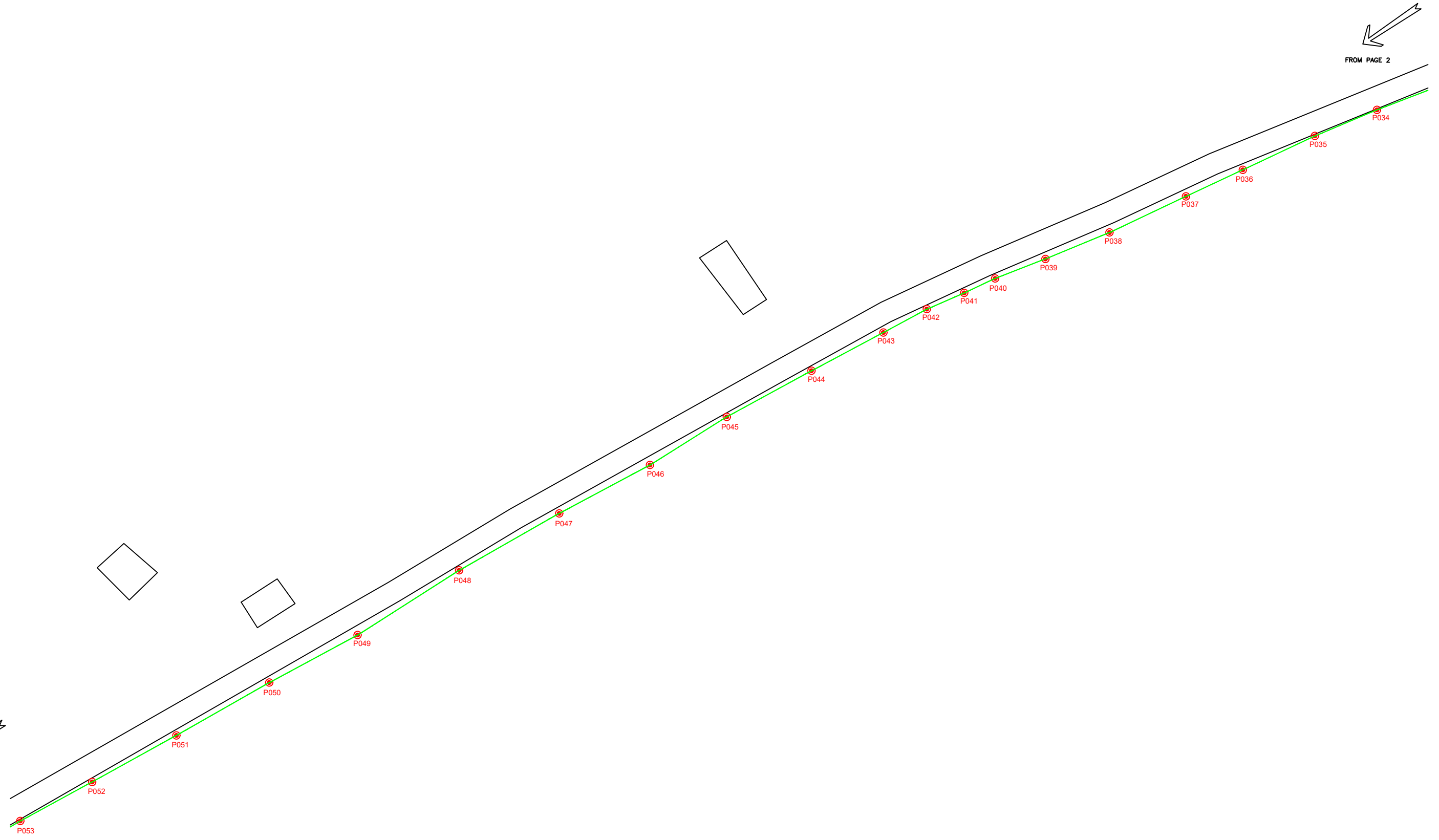
PROJECT PHASE 2

DESIGN BY	ZUL FAHMIE	DATE	18/12/2024
DRAWN BY	ZUL FAHMIE	SCALE	NOT TO SCALE
CHECKED BY	AZHAN HARIS	JOB NUMBER	ABD5109
DRAWING NUMBER		ABD5109	
THIS PRINT AND ITS COPYRIGHT ARE THE PROPERTY OF KNZ ENGINEERING SDN. BHD.		2/5	
		A3	



FROM PAGE 2

TO PAGE 4



LEGEND

	12C FOC		Installed 1:4 splitter in FDC		INSTALLED POLE (9M)		NEW MANHOLE		TENSION SMALL / TENSION BIG		MH NO.
	24C FOC		FDP		INSTALLED RISER		EXISTING MANHOLE		CLOSURE NO.		EXISTING TNB POLE NO.
	48C FOC		CLOSURE		SUSPENSION BIG		EXISTING ALLO POLE		CLOSURE NO.		NEW POLE NO.
	90C FOC		NEW MANHOLE (PT)		SUSPENSION SMALL		LOOP		FDP NO.		SEE SHEET XXX
	144C FOC		INSTALLED POLE		FDC		FDP BOUNDARY		FDC NO.		SEE SHEET XXX

KEY PLAN

PROJECT OWNER



MAIN CONTRACTOR




SUB-CONTRACTOR



KNZ ENGINEERING SDN BHD  
 NO. 60 & 60A, Jalan Klebang Indah 1, Medan Klebang Indah, 30100 Ipoh, Perak  
 No Tel: 019-3695071  
 Email: admin@knzengineering.com.my  
 Website: www.knzengineering.com.my

PROJECT TITLE

SEKOLAH JENIS KEBANGSAAN (TAMIL) NATESA PILLAY

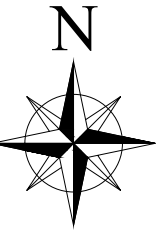
DRAWING TITLE

TP DRAWING POP 2 AT SEKOLAH JENIS KEBANGSAAN (TAMIL) NATESA PILLAY

PROJECT PHASE

PROJECT PHASE 2

DESIGN BY	ZUL FAHMIE	DATE	18/12/2024
DRAWN BY	ZUL FAHMIE	SCALE	NOT TO SCALE
CHECKED BY	AZHAN HARIS	JOB NUMBER	ABD5109
DRAWING NUMBER		ABD5109	
THIS PRINT AND ITS COPYRIGHT ARE THE PROPERTY OF KNZ ENGINEERING SDN. BHD.		3/5	
		A3	



TO PAGE 5

FROM PAGE 4

LEGEND

	12C FOC		Installed 1:4 splitter in FDC		INSTALLED POLE (9M)		NEW MANHOLE		TS / TB TENSION SMALL / TENSION BIG		MH NO.
	24C FOC		FDP		INSTALLED RISER		EXISTING MANHOLE		CLOSURE NO.		EXISTING TNB POLE NO.
	48C FOC		CLOSURE		SUSPENSION BIG		EXISTING ALLO POLE		FDC NO.		NEW POLE NO.
	90C FOC		NEW MANHOLE (PT)		SUSPENSION SMALL		LOOP				
	144C FOC		INSTALLED POLE		FDC		FDP BOUNDARY				

KEY PLAN

PROJECT OWNER



MAIN CONTRACTOR




SUB-CONTRACTOR



KNZ ENGINEERING SDN BHD  
 NO. 60 & 60A, Jalan Klebang Indah 1, Medan Klebang Indah, 30100 Ipoh, Perak  
 No Tel: 019-3695071  
 Email: admin@knzengineering.com.my  
 Website: www.knzengineering.com.my

PROJECT TITLE

SEKOLAH JENIS KEBANGSAAN (TAMIL) NATESA PILLAY

DRAWING TITLE

TP DRAWING POP 2 AT SEKOLAH JENIS KEBANGSAAN (TAMIL) NATESA PILLAY

PROJECT PHASE

PROJECT PHASE 2

DESIGN BY	ZUL FAHMIE	DATE	18/12/2024
DRAWN BY	ZUL FAHMIE	SCALE	NOT TO SCALE
CHECKED BY	AZHAN HARIS	JOB NUMBER	ABD5109
DRAWING NUMBER		ABD5109	
THIS PRINT AND ITS COPYRIGHT ARE THE PROPERTY OF KNZ ENGINEERING SDN. BHD.			4/5
			A3



FROM PAGE 4



LEGEND

	12C FOC		Installed 1:4 splitter in FDC		INSTALLED POLE (9M)		NEW MANHOLE		TENSION SMALL / TENSION BIG		MH NO.
	24C FOC		FDP		INSTALLED RISER		HOUSE NUMBER		EXISTING MANHOLE		EXISTING TNB POLE NO.
	48C FOC		CLOSURE		SUSPENSION BIG		EXISTING ALLO POLE		CLOSURE NO.		NEW POLE NO.
	90C FOC		NEW MANHOLE (PT)		SUSPENSION SMALL		LOOP		FDP NO.		SEE SHEET XXX
	144C FOC		INSTALLED POLE		FDC		FDP BOUNDARY		FDC NO.		SEE SHEET XXX

KEY PLAN

PROJECT OWNER



MAIN CONTRACTOR




SUB-CONTRACTOR



KNZ ENGINEERING SDN BHD  
 NO. 60 & 60A, Jalan Klebang Indah 1, Medan Klebang Indah, 30100 Ipoh, Perak  
 No Tel: 019-3695071  
 Email: admin@knzengineering.com.my  
 Website: www.knzengineering.com.my

PROJECT TITLE

SEKOLAH JENIS KEBANGSAAN (TAMIL) NATESA PILLAY

DRAWING TITLE

TP DRAWING POP 2 AT SEKOLAH JENIS KEBANGSAAN (TAMIL) NATESA PILLAY

PROJECT PHASE

PROJECT PHASE 2

DESIGN BY	ZUL FAHMIE	DATE	18/12/2024
DRAWN BY	ZUL FAHMIE	SCALE	NOT TO SCALE
CHECKED BY	AZHAN HARIS	JOB NUMBER	ABD5109
DRAWING NUMBER		ABD5109	
THIS PRINT AND ITS COPYRIGHT ARE THE PROPERTY OF KNZ ENGINEERING SDN. BHD.		5/5	
		A3	