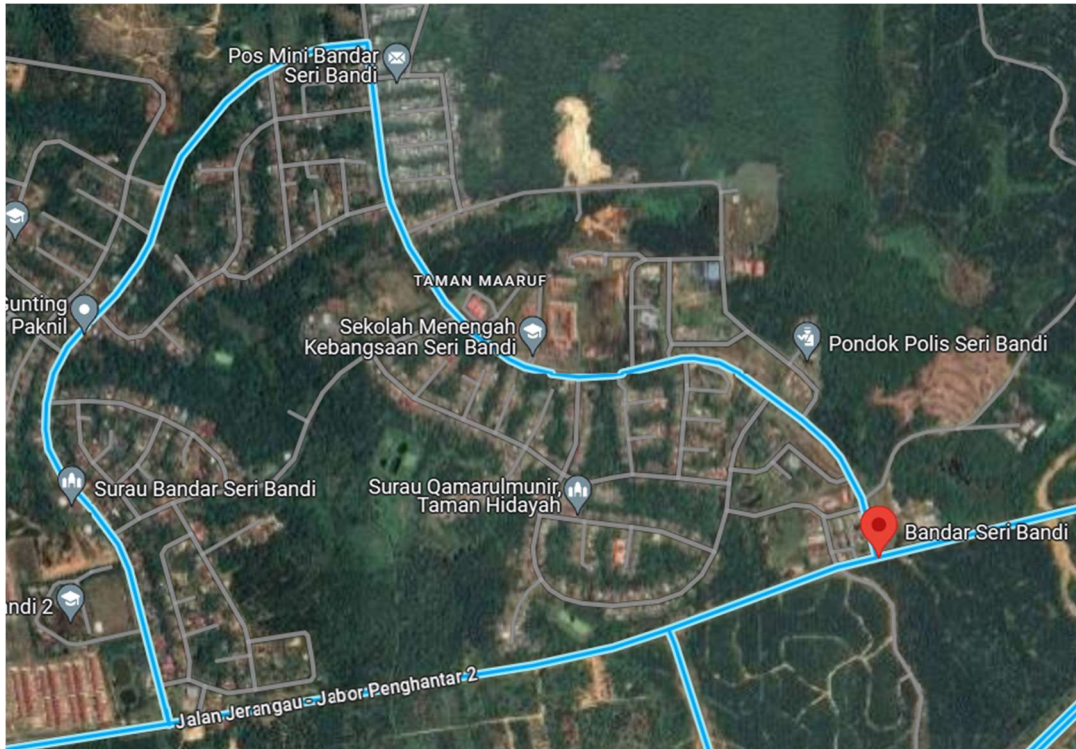


GAMBAR LOKASI





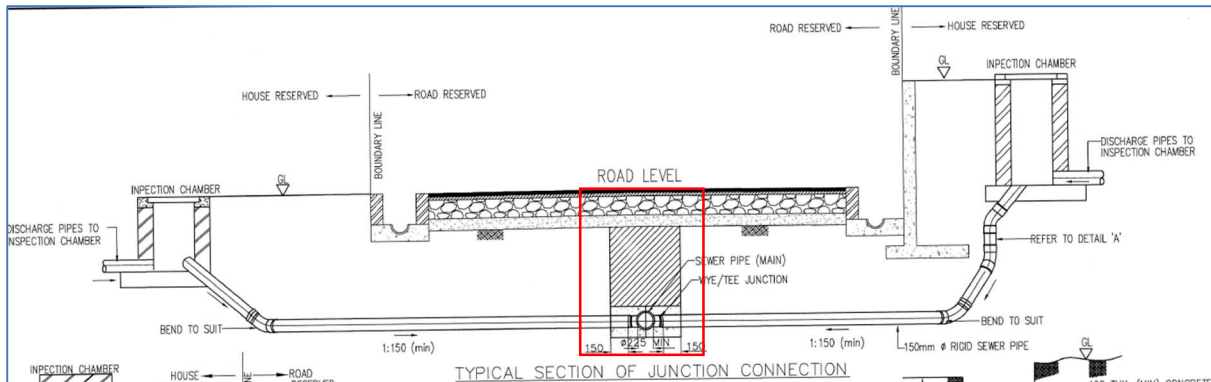
Main sewer pipe
225mm VCP Sewer pipe

1,200mm sewer
manhole

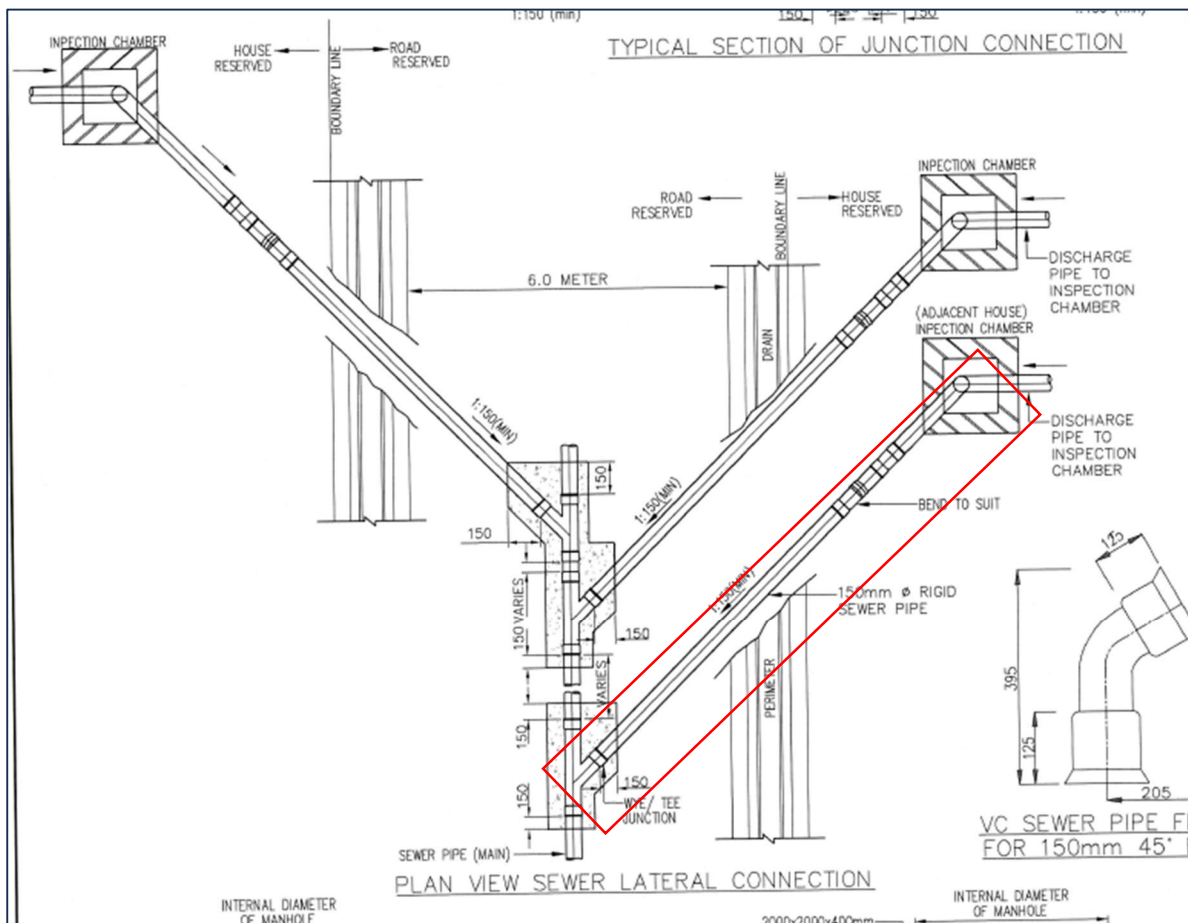
Branch from internal house
- 150mm VCP Sewer pipe

Kaedah korekan

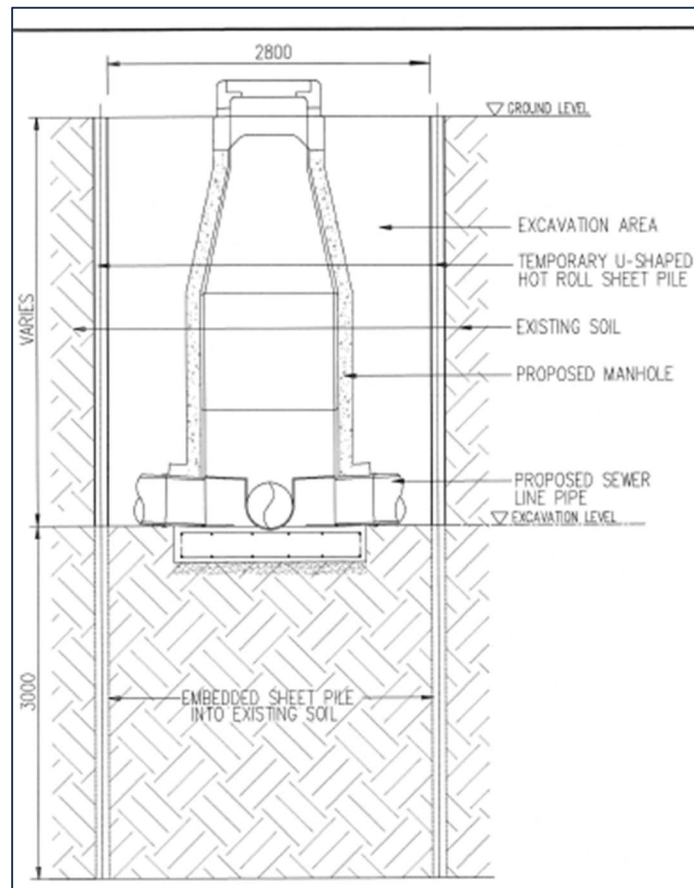
Jajaran korekan akan berada di sebelah kiri atau kanan jalan berturap mengikut keadaan/kesesuaian tapak.



Jarak korekan paip = 600 - 800mm untuk pemasangan 225mm paip utama



Jarak korekan paip = 300 – 600mm untuk pemasangan 150mm paip lateral ke rumah



Jarak korekan lurang/manhole = 2800mm