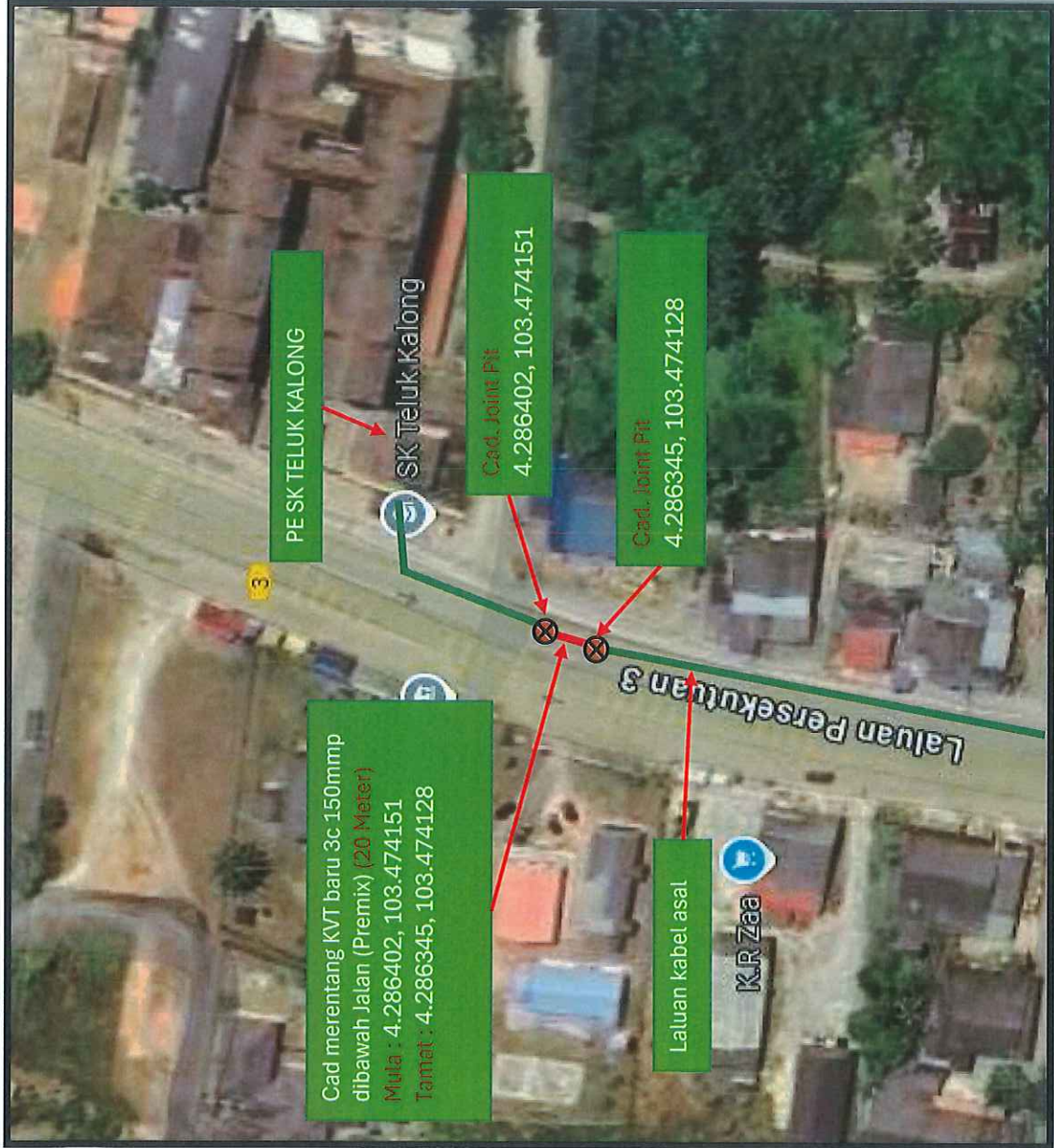

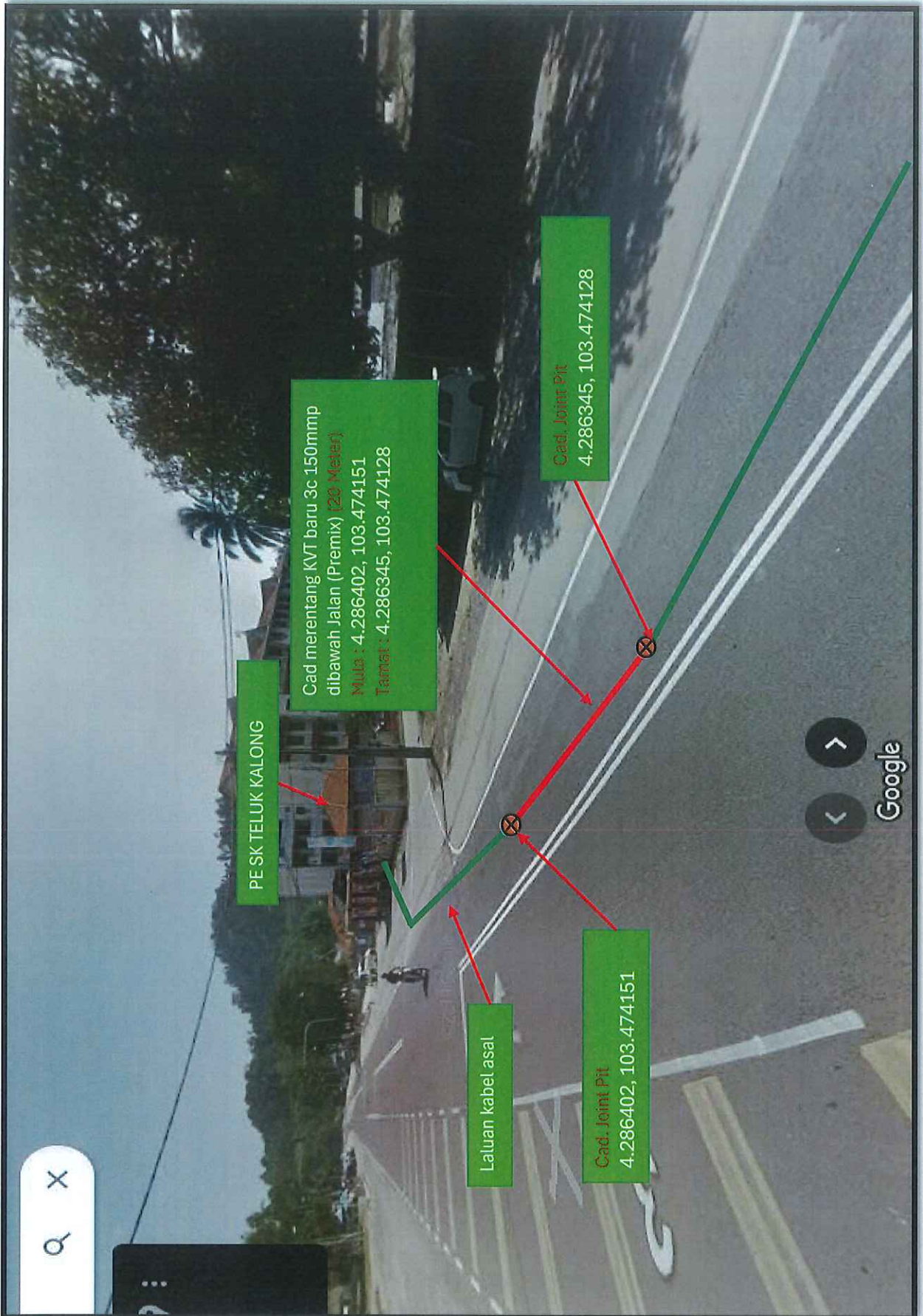


PELAN TAPAK



<p>LEGEND :</p> <p>— Laluan Kabel Asal</p> <p>— Cad. Merentang KVT baru 3c.150mmp</p> <p>⊗ Cad. Joint Pit</p>	
 <p>TNB DISTRIBUTION (38695-A)</p>	
DRAWN BY:	
CHECKED BY:	
APPROVED BY:	
<p>TITLE :</p> <p>11 CORR UG KEM OCT 2024 - MENJALANKAN KERJA - KERJA PEMBAIKAN PD MAPPING KABEL 11KV DIANTARA PE SK TELUK KALONG KE PE TELUK PUCHONG SUBZONE T2 KEMAMAN FY 2024</p>	
	SCALE : nts

PELAN LOKASI



PESK TELUK KALONG

Cad merentang KVT baru 3x150mmpp
dibawah Jalan (Premix) (20 Meter)
Mula : 4.286402, 103.474151
Tamat : 4.286345, 103.474128

Laluan kabel asal

Cad. Joint Pit
4.286402, 103.474151

Cad. Joint Pit
4.286345, 103.474128

Cadangan merentang KVT baru 3x150mmpp, Tar (Premix)(20 Meter)