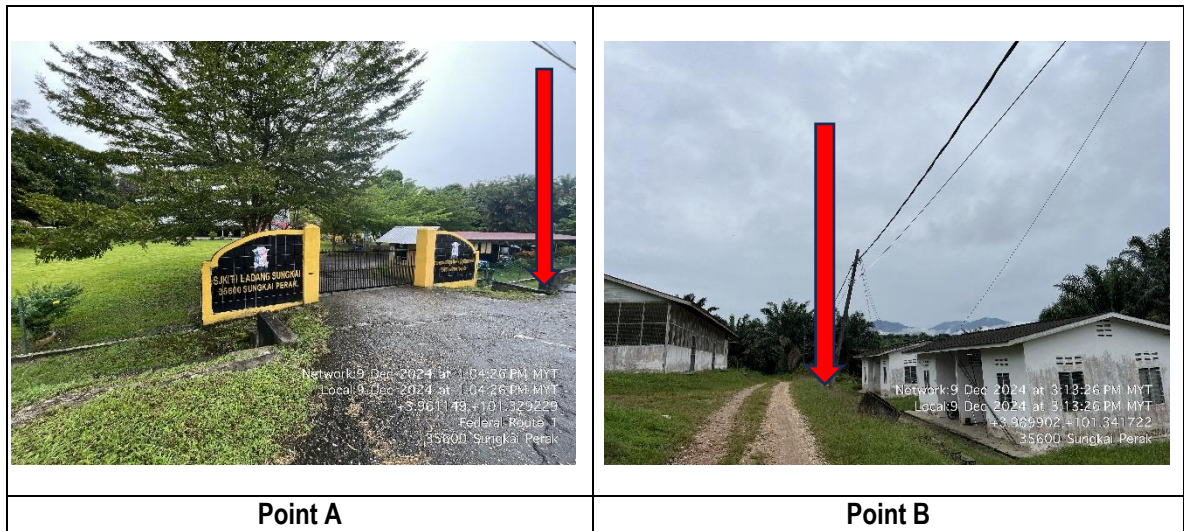


TECHNICAL PROPOSAL

POP2 ABD0086 SEKOLAH JENIS KEBANGSAAN (TAMIL) LADANG SUNGKAI (D-SIDE)

Company Name:	STEADCOM SDN BHD
Company Address:	11-3, Jalan Puteri 2/6, Bandar Puteri, 47100 Puchong, Selangor
Prepared By:	HANIERAH
Date:	16/12/2024



Starting Point

Site / Boundary Name	Sungkai
Address	Sekolah Jenis Kebangsaan (Tamil) Ladang Sungkai, Sungkai, Perak
District	Sungkai
Postcode	35600
State	Perak
GPS Coordinate	3.961149, 101.329229
LRD	A

End Point

Site / Boundary Name	Sungkai
Address	Sungkai, Perak
District	Sungkai
Postcode	35600
State	Perak
GPS Coordinate	3.969283442, 101.3258854
LRD	B



PROJEK PENYEDIAAN DAN PENYELENGGARAAN POINT OF PRESENCE (POP)
 FASA 2: HAB INFRASTRUKTUR GENTIAN OPTIK BERHAMPIRAN DENGAN
 SEKOLAH, KAWASAN PERINDUSTRIAN, PREMIS KERAJAAN DAN KOMUNITI
 SEKITARNYA OLEH KEMENTERIAN KOMUNIKASI MALAYSIA - ZON UTARA
 (KKMM.400-11/17/132(1))

STEADCOM
 A member of OCK Group Berhad

1.0 Work Summary

No	Proposed Distance and Method	Unit	Qty
1	Horizontal Directional Drilling (HDD)	m	140
2	Carriage Way Open trench (CW)	m	0
3	Grass Verge Open Trenching (GV)	m	0
4	Micro trenching (MT)	m	0
	Total		0

	Other Information	Unit	Qty
1	Proposed Manhole	EA	4
2	Proposed Pole	EA	96
3	Joint Closure	EA	3
4	Estimated time required for completion	days	90



PROJEK PENYEDIAAN DAN PENYELENGGARAAN POINT OF PRESENCE (POP)
 FASA 2: HAB INFRASTRUKTUR GENTIAN OPTIK BERHAMPIRAN DENGAN
 SEKOLAH, KAWASAN PERINDUSTRIAN, PREMIS KERAJAAN DAN KOMUNITI
 SEKITARNYA OLEH KEMENTERIAN KOMUNIKASI MALAYSIA - ZON UTARA
 (KKMM.400-11/17/132(1))



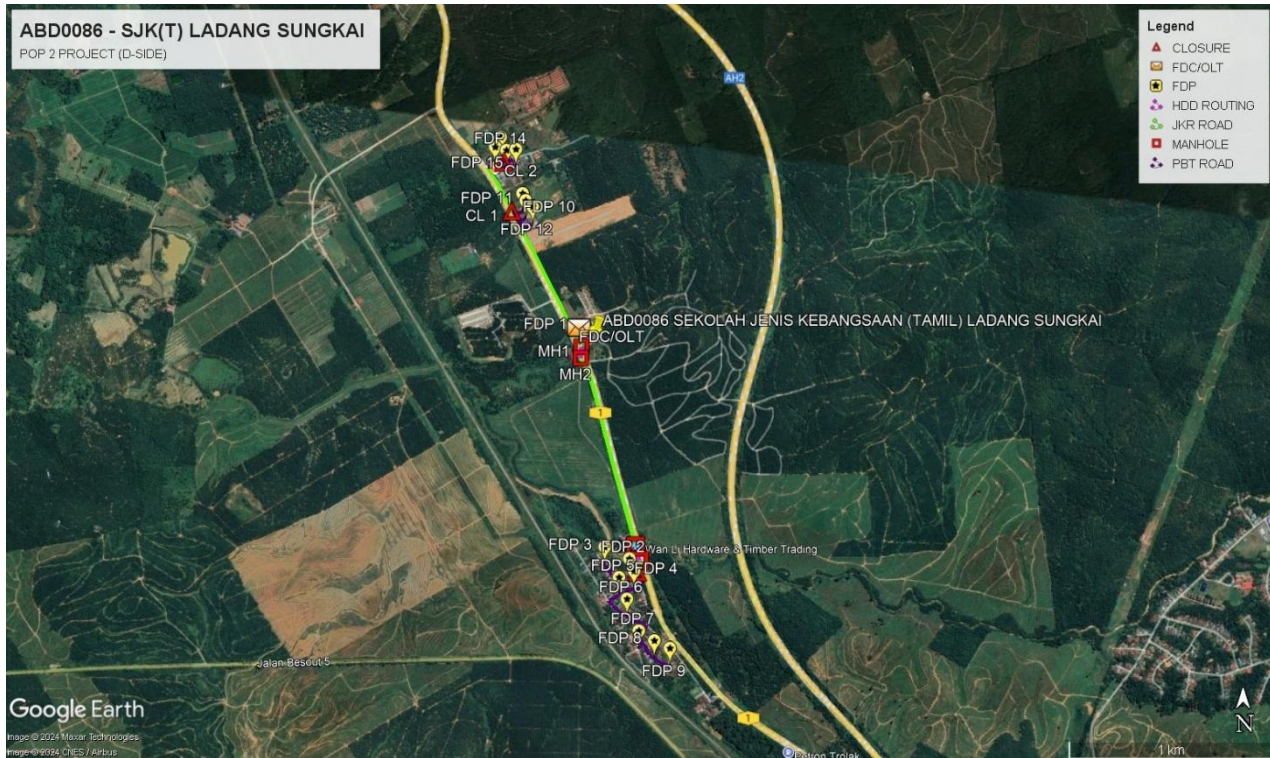
2.0 LOCAL AUTHORITY SUMMARY

Daerah Sungkai

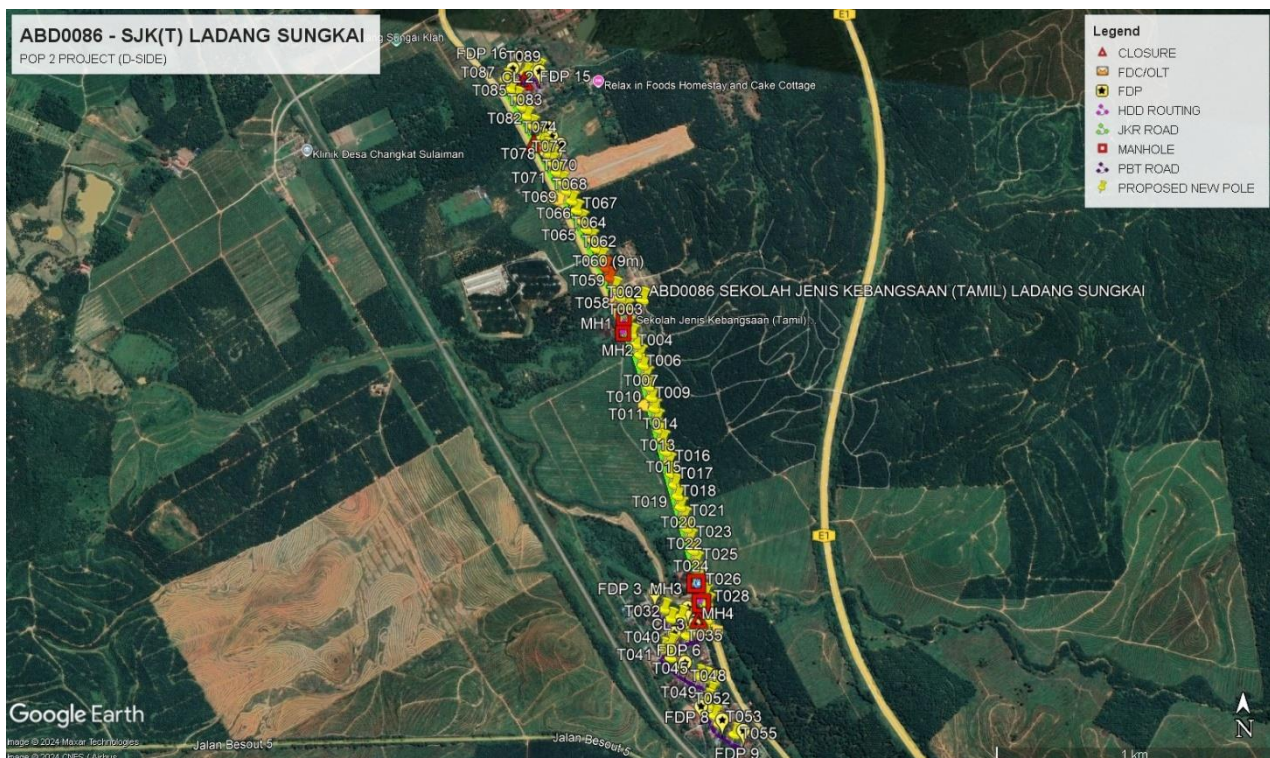
Bil	Items	Owner	Quantity	Distance
1	HDD	JKR	4	140m
		Majlis	-	-
		Estate / Private Land	-	-
2	New Pole	JKR	53	2068m
		Majlis	43	1594m
		Estate / Private Land	-	-
3	Existing TNB Pole	JKR	-	-
		Majlis	-	-
		Estate / Private Land	-	-
Total				3802m

3.0 SITE PLAN KMZ (Overview site area)

3.1 Proposed FDP



3.2 Proposed New Pole



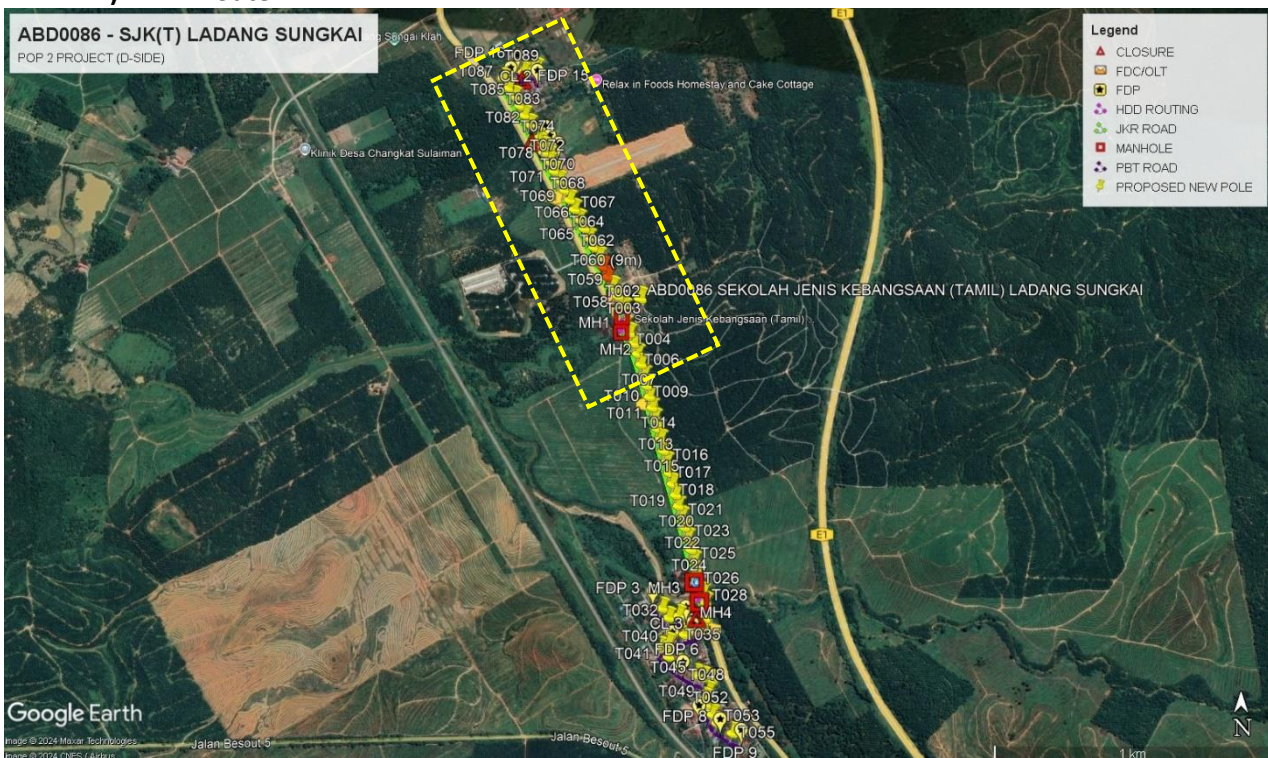
3.3 Site Plan KMZ Routing (All Local Authority)

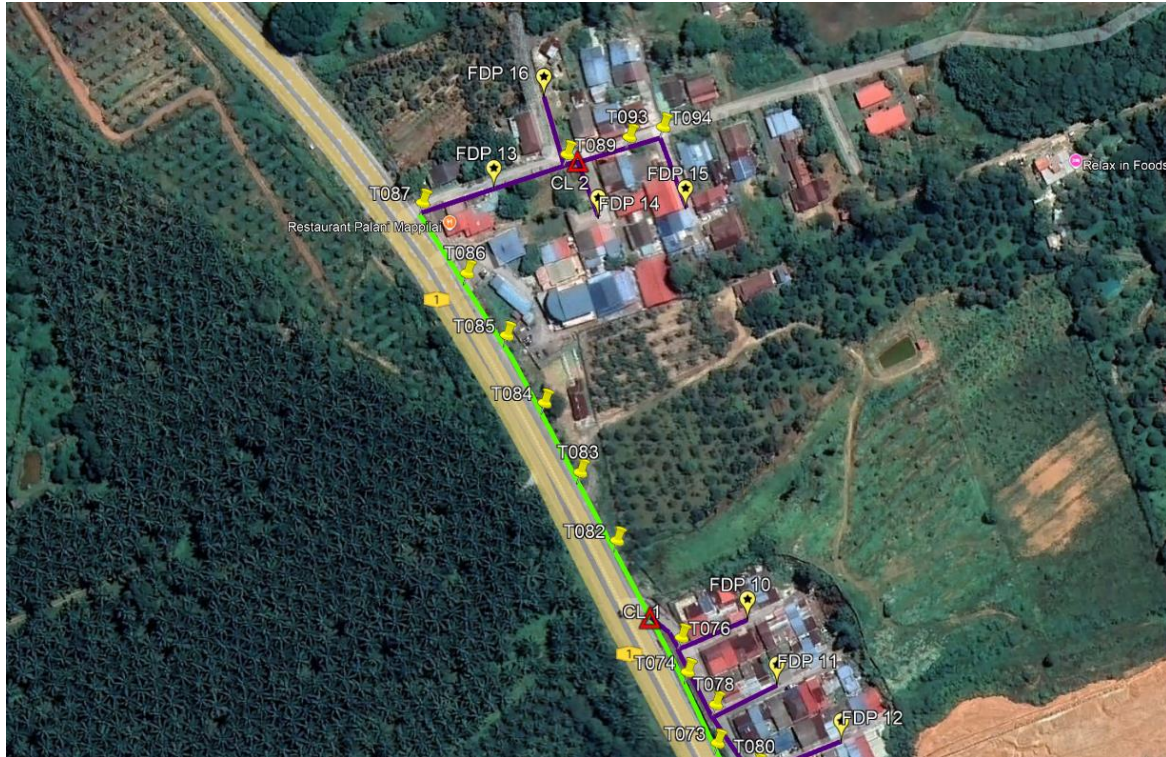


Green Colour – JKR Road
Purple Colour – PBT Road

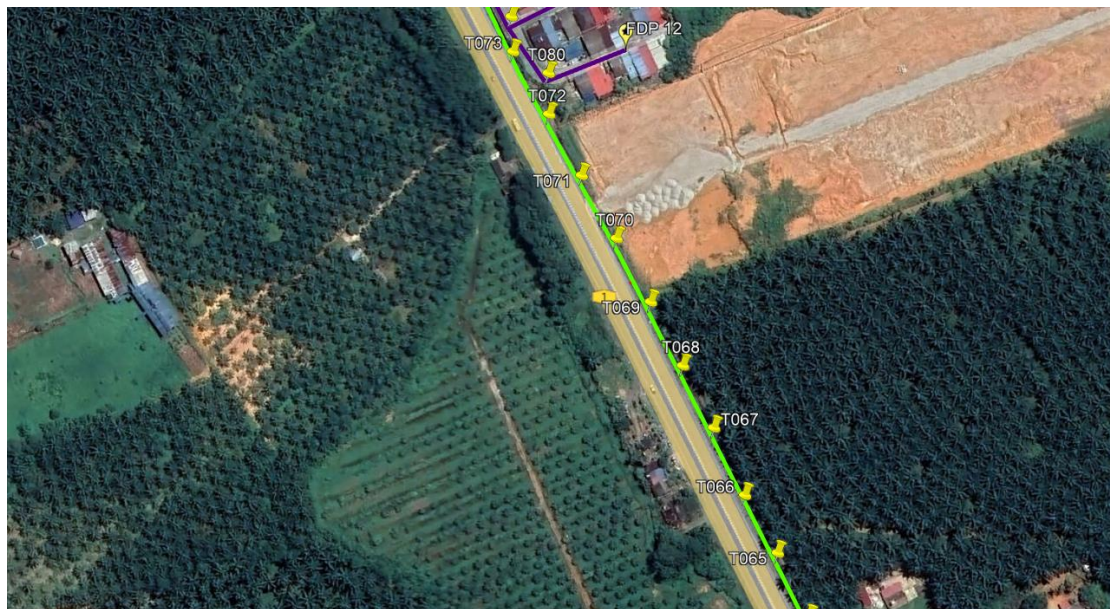
3.4 Site Plan – KMZ Routing (All site area)

i) Route 1





Route 1.1

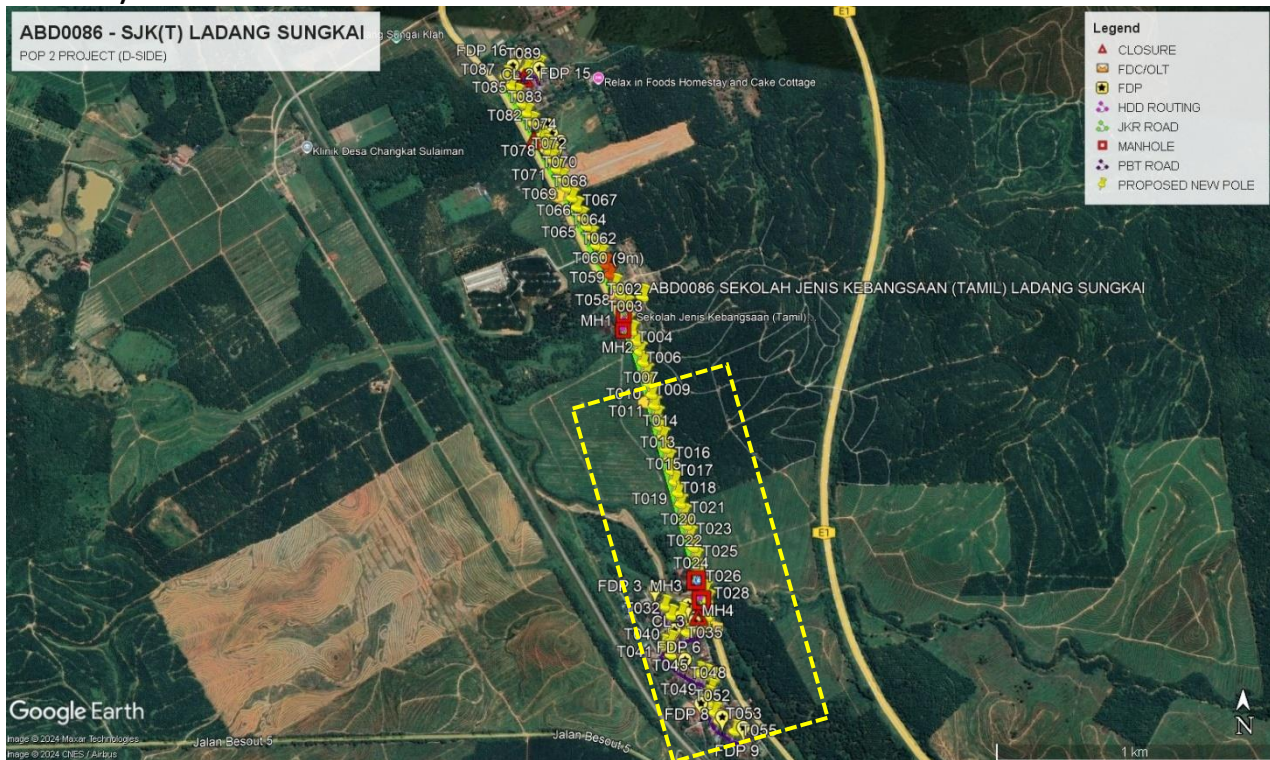


Route 1.2



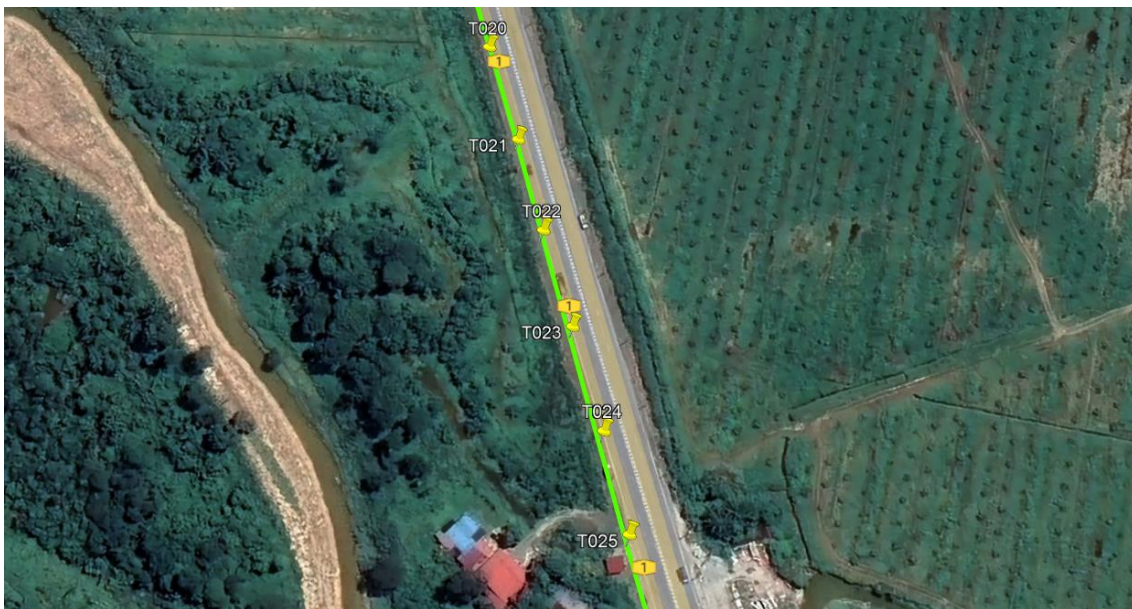
Route 1.3

ii) Route 2





Route 2.1



Route 2.2

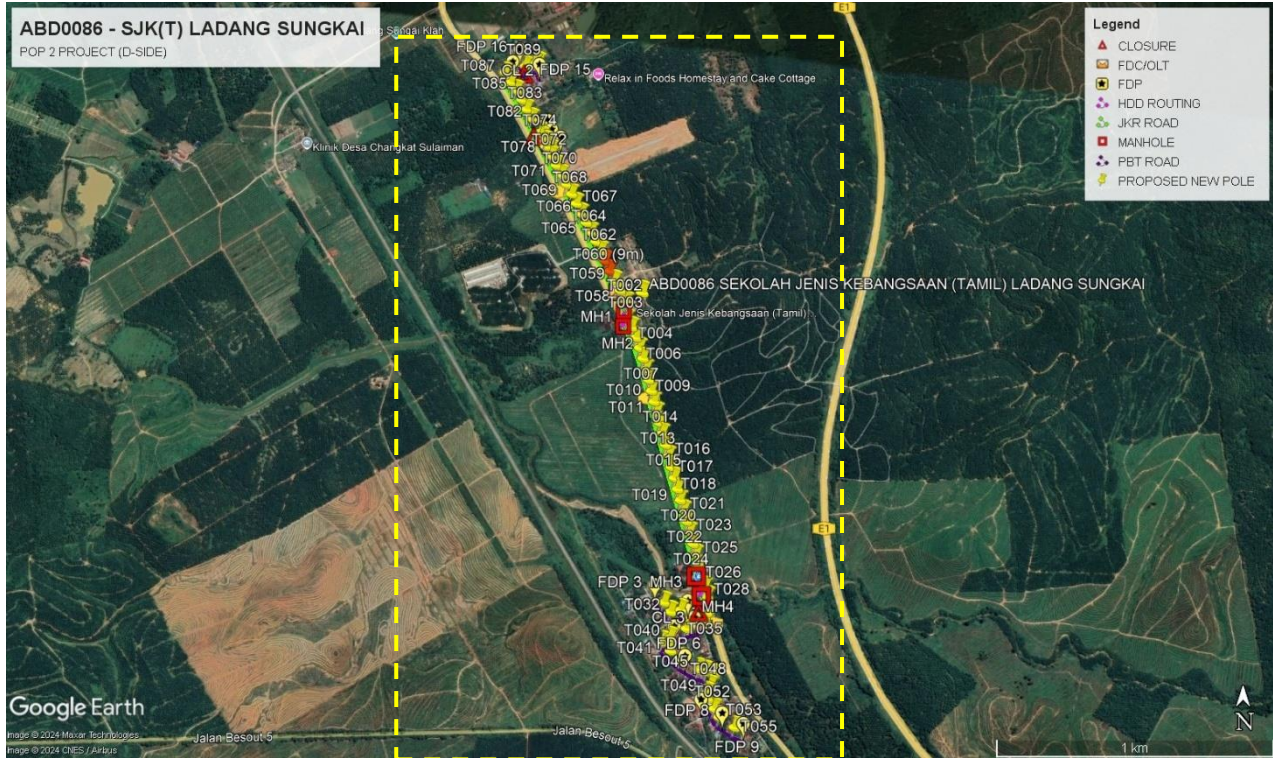


Route 2.3



Route 2.4

3.5 Site Plan – KMZ Routing (Proposed new Pole)



4.0 PROPOSED NEW POLE LAT & LONG TABLE

No.	Label	Pole & Manhole ID	Latitude	Longitude	Local Authority
1	FDC/OLT	T000	3.9611173	101.3293165	JKR PERSEKUTUAN
2	CL 1	T075	3.9668299	101.3263888	JKR PERSEKUTUAN
3	CL 2	T090	3.9689817	101.3260465	JKR PERSEKUTUAN
4	CL 3	T030	3.9510329	101.3318959	MAJLIS DAERAH TAPAH
5	FDP 1	T001	3.9610077	101.3293712	JKR PERSEKUTUAN
6	FDP 2	T031	3.9508432	101.3315343	MAJLIS DAERAH TAPAH
7	FDP 3	T035	3.951357	101.3304519	MAJLIS DAERAH TAPAH
8	FDP 4	T038	3.9503106	101.3317363	MAJLIS DAERAH TAPAH
9	FDP 5	T040	3.9500269	101.3310803	MAJLIS DAERAH TAPAH
10	FDP 6	T045	3.9490817	101.3314306	MAJLIS DAERAH TAPAH
11	FDP 7	T052	3.9476902	101.3319465	MAJLIS DAERAH TAPAH
12	FDP 8	T055	3.9472613	101.3326292	MAJLIS DAERAH TAPAH
13	FDP 9	T057	3.9469252	101.333313	MAJLIS DAERAH TAPAH
14	FDP 10	T077	3.9668204	101.3268478	MAJLIS DAERAH TAPAH
15	FDP 11	T079	3.9665118	101.3269866	MAJLIS DAERAH TAPAH
16	FDP 12	T081	3.9662457	101.3272912	MAJLIS DAERAH TAPAH
17	FDP 13	T088	3.9688525	101.3256488	MAJLIS DAERAH TAPAH
18	FDP 14	T091	3.9687126	101.3261421	MAJLIS DAERAH TAPAH
19	FDP 15	T094	3.9687573	101.3265546	MAJLIS DAERAH TAPAH
20	FDP 16	T095	3.9692834	101.3258854	MAJLIS DAERAH TAPAH
21	MH1	MH1	3.9609009	101.3294292	JKR PERSEKUTUAN
22	MH2	MH2	3.9603937	101.3294069	JKR PERSEKUTUAN
23	MH3	MH3	3.952175	101.331809	JKR PERSEKUTUAN
24	MH4	MH4	3.951531	101.331976	JKR PERSEKUTUAN

4.1 OVERALL, POLE (PROPOSED NEW POLE)

No.	Pole & Manhole ID	Distance	Latitude	Longitude	Local Authority
1	T000	0	3.9611173	101.3293165	JKR PERSEKUTUAN
2	T001	14	3.9610077	101.3293712	JKR PERSEKUTUAN
3	T002	12	3.9609136	101.3294189	JKR PERSEKUTUAN
4	T003	8	3.960333	101.329444	JKR PERSEKUTUAN
5	T004	34	3.9600585	101.3295901	JKR PERSEKUTUAN
6	T005	41	3.9597189	101.3297383	JKR PERSEKUTUAN
7	T006	40	3.9593752	101.3298633	JKR PERSEKUTUAN
8	T007	41	3.9590231	101.3299696	JKR PERSEKUTUAN
9	T008	41	3.9586681	101.3300707	JKR PERSEKUTUAN
10	T009	41	3.9583102	101.3301584	JKR PERSEKUTUAN
11	T010	41	3.9579496	101.3302483	JKR PERSEKUTUAN
12	T011	41	3.957592	101.3303292	JKR PERSEKUTUAN
13	T012	41	3.9572308	101.3304225	JKR PERSEKUTUAN
14	T013	39	3.9568881	101.3305175	JKR PERSEKUTUAN
15	T014	40	3.9565348	101.330607	JKR PERSEKUTUAN
16	T015	42	3.956169	101.3307099	JKR PERSEKUTUAN
17	T016	43	3.9557943	101.3308108	JKR PERSEKUTUAN
18	T017	41	3.9554334	101.330905	JKR PERSEKUTUAN
19	T018	41	3.9550777	101.3310021	JKR PERSEKUTUAN
20	T019	42	3.9547145	101.3311058	JKR PERSEKUTUAN
21	T020	40	3.9543598	101.3311935	JKR PERSEKUTUAN
22	T021	41	3.9540036	101.3313028	JKR PERSEKUTUAN
23	T022	39	3.9536626	101.3313963	JKR PERSEKUTUAN
24	T023	41	3.9533101	101.3315014	JKR PERSEKUTUAN
25	T024	43	3.9529367	101.3316121	JKR PERSEKUTUAN
26	T025	41	3.952577	101.3316989	JKR PERSEKUTUAN
27	T026	43	3.9522073	101.3318075	JKR PERSEKUTUAN
28	T027	37	3.9518876	101.3318907	JKR PERSEKUTUAN
29	T028	41	3.9515308	101.3319892	JKR PERSEKUTUAN
30	T029	34	3.95123	101.3320698	JKR PERSEKUTUAN
31	T030	29	3.9510329	101.3318959	MAJLIS DAERAH TAPAH
32	T031	45	3.9508432	101.3315343	MAJLIS DAERAH TAPAH
33	T032	38	3.9508048	101.3311962	MAJLIS DAERAH TAPAH
34	T033	37	3.9507409	101.3308692	MAJLIS DAERAH TAPAH
35	T034	41	3.9510441	101.3306591	MAJLIS DAERAH TAPAH
36	T035	42	3.951357	101.3304519	MAJLIS DAERAH TAPAH
37	T036	40	3.9507	101.3320475	MAJLIS DAERAH TAPAH
38	T037	31	3.9504224	101.3320138	MAJLIS DAERAH TAPAH
39	T038	33	3.9503106	101.3317363	MAJLIS DAERAH TAPAH
40	T039	41	3.9502039	101.3313869	MAJLIS DAERAH TAPAH



PROJEK PENYEDIAAN DAN PENYELENGGARAAN POINT OF PRESENCE (POP)
 FASA 2: HAB INFRASTRUKTUR GENTIAN OPTIK BERHAMPIRAN DENGAN
 SEKOLAH, KAWASAN PERINDUSTRIAN, PREMIS KERAJAAN DAN KOMUNITI
 SEKITARNYA OLEH KEMENTERIAN KOMUNIKASI MALAYSIA - ZON UTARA
 (KKMM.400-11/17/132(1))

STEADCOM
 A member of OCK Group Berhad

41	T040	39	3.9500269	101.3310803	MAJLIS DAERAH TAPAH
42	T041	28	3.9499094	101.3308538	MAJLIS DAERAH TAPAH
43	T042	30	3.9497764	101.3306222	MAJLIS DAERAH TAPAH
44	T043	42	3.9494865	101.3308716	MAJLIS DAERAH TAPAH
45	T044	45	3.9492282	101.3311884	MAJLIS DAERAH TAPAH
46	T045	31	3.9490817	101.3314306	MAJLIS DAERAH TAPAH
47	T046	42	3.9489124	101.3317715	MAJLIS DAERAH TAPAH
48	T047	30	3.9488244	101.3320305	MAJLIS DAERAH TAPAH
49	T048	29	3.9487242	101.3322758	MAJLIS DAERAH TAPAH
50	T049	42	3.9483708	101.3321532	MAJLIS DAERAH TAPAH
51	T050	27	3.9481503	101.3320477	MAJLIS DAERAH TAPAH
52	T051	21	3.9479651	101.3320611	MAJLIS DAERAH TAPAH
53	T052	33	3.9476902	101.3319465	MAJLIS DAERAH TAPAH
54	T053	43	3.9476488	101.3322791	MAJLIS DAERAH TAPAH
55	T054	34	3.9473809	101.3324379	MAJLIS DAERAH TAPAH
56	T055	25	3.9472613	101.3326292	MAJLIS DAERAH TAPAH
57	T056	40	3.9470627	101.3329301	MAJLIS DAERAH TAPAH
58	T057	45	3.9469252	101.333313	MAJLIS DAERAH TAPAH
59	T058	23	3.9613008	101.3292104	JKR PERSEKUTUAN
60	T059	41	3.9616179	101.3290266	JKR PERSEKUTUAN
61	T060	41	3.9619553	101.3288682	JKR PERSEKUTUAN
62	T061	42	3.9622992	101.3287045	JKR PERSEKUTUAN
63	T062	39	3.962622	101.3285618	JKR PERSEKUTUAN
64	T063	40	3.9629423	101.3283959	JKR PERSEKUTUAN
65	T064	40	3.9632588	101.3282265	JKR PERSEKUTUAN
66	T065	41	3.9635899	101.3280638	JKR PERSEKUTUAN
67	T066	38	3.9638889	101.3278942	JKR PERSEKUTUAN
68	T067	42	3.9642376	101.3277335	JKR PERSEKUTUAN
69	T068	40	3.9645592	101.3275721	JKR PERSEKUTUAN
70	T069	41	3.9648892	101.3274055	JKR PERSEKUTUAN
71	T070	41	3.9652183	101.3272284	JKR PERSEKUTUAN
72	T071	41	3.9655444	101.327047	JKR PERSEKUTUAN
73	T072	40	3.9658614	101.3268782	JKR PERSEKUTUAN
74	T073	41	3.9661857	101.3266914	JKR PERSEKUTUAN
75	T074	40	3.9665204	101.3265501	JKR PERSEKUTUAN
76	T075	38	3.9668299	101.3263888	JKR PERSEKUTUAN
77	T076	21	3.9666829	101.3265212	MAJLIS DAERAH TAPAH
78	T077	38	3.9668204	101.3268478	MAJLIS DAERAH TAPAH
79	T078	40	3.9663671	101.3266829	MAJLIS DAERAH TAPAH
80	T079	37	3.9665118	101.3269866	MAJLIS DAERAH TAPAH
81	T080	39	3.9660744	101.3268753	MAJLIS DAERAH TAPAH
82	T081	50	3.9662457	101.3272912	MAJLIS DAERAH TAPAH
83	T082	40	3.9671403	101.3262162	JKR PERSEKUTUAN
84	T083	40	3.9674615	101.3260424	JKR PERSEKUTUAN

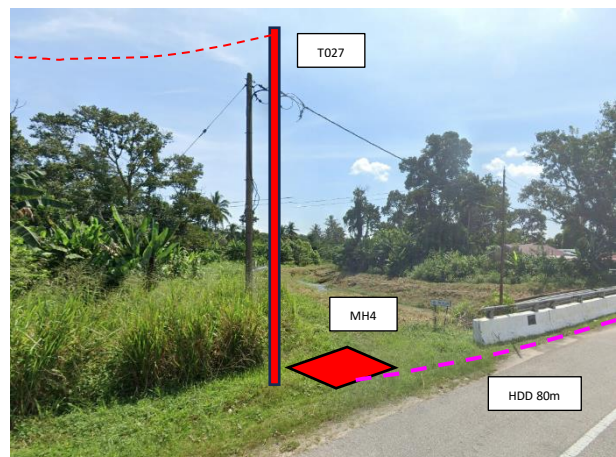
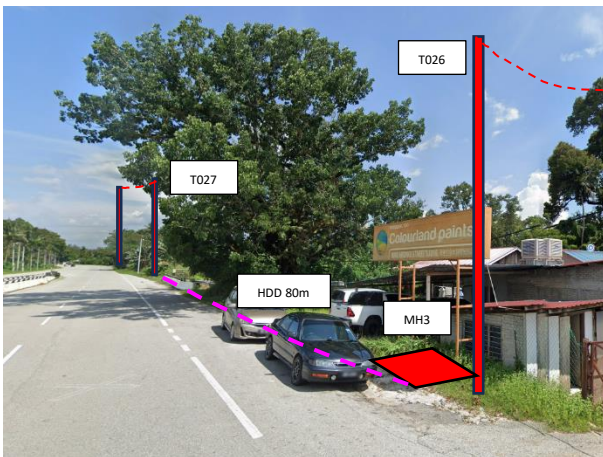
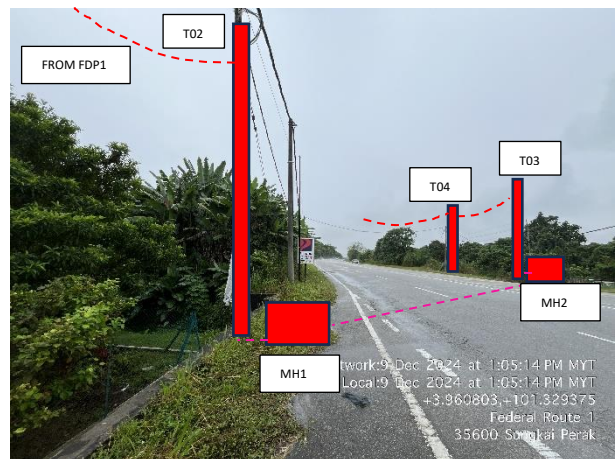


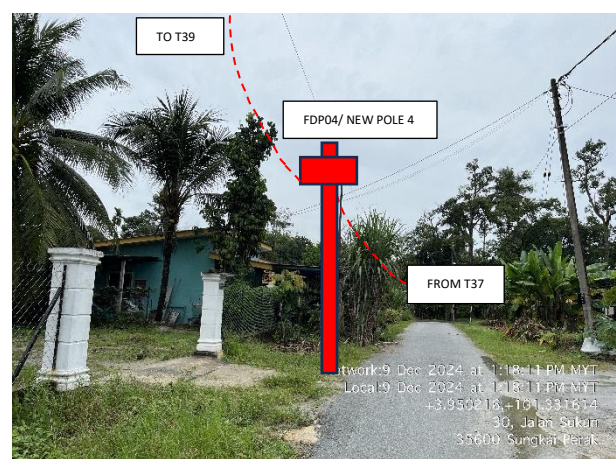
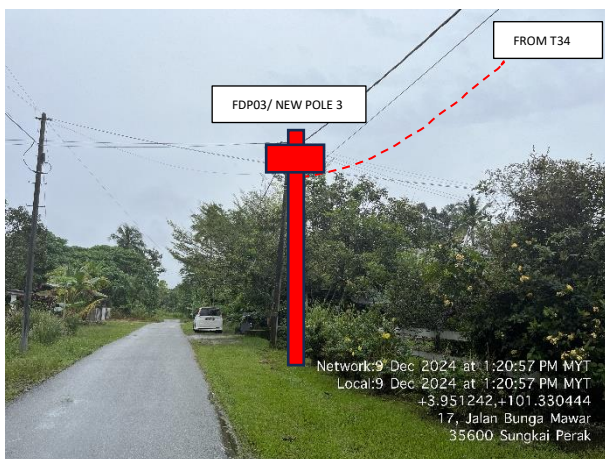
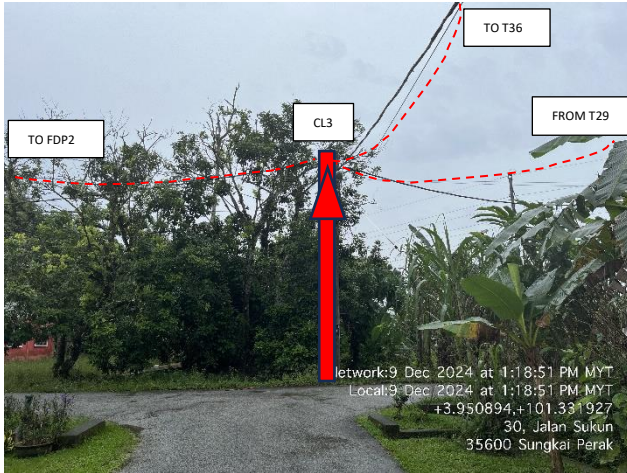
PROJEK PENYEDIAAN DAN PENYELENGGARAAN POINT OF PRESENCE (POP)
 FASA 2: HAB INFRASTRUKTUR GENTIAN OPTIK BERHAMPIRAN DENGAN
 SEKOLAH, KAWASAN PERINDUSTRIAN, PREMIS KERAJAAN DAN KOMUNITI
 SEKITARNYA OLEH KEMENTERIAN KOMUNIKASI MALAYSIA - ZON UTARA
 (KKMM.400-11/17/132(1))

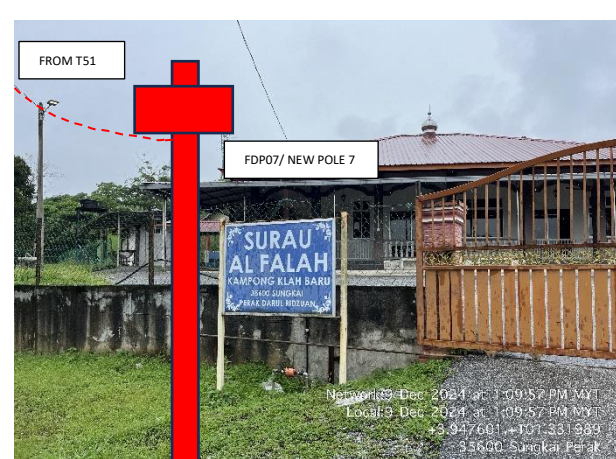
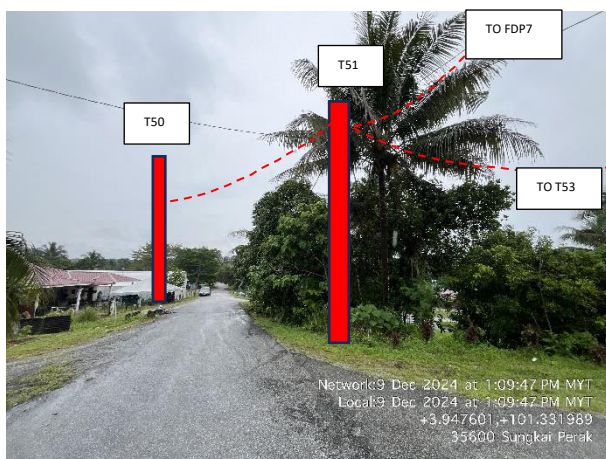
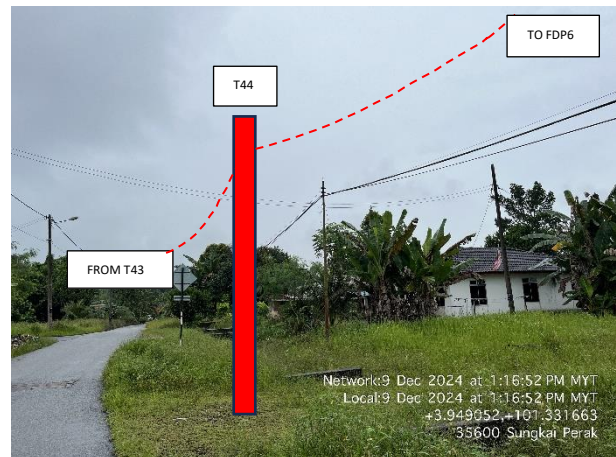
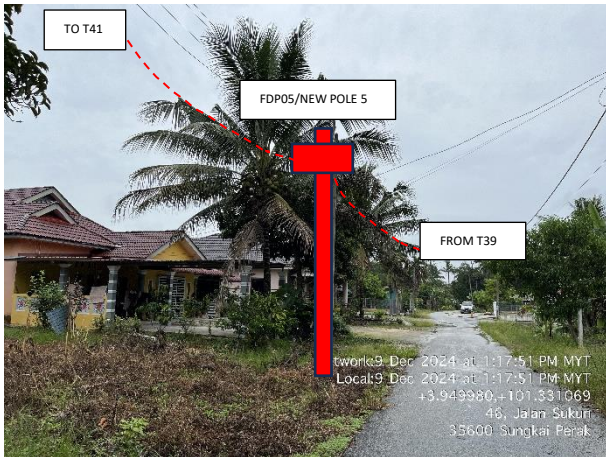
STEADCOM
 A member of OCK Group Berhad

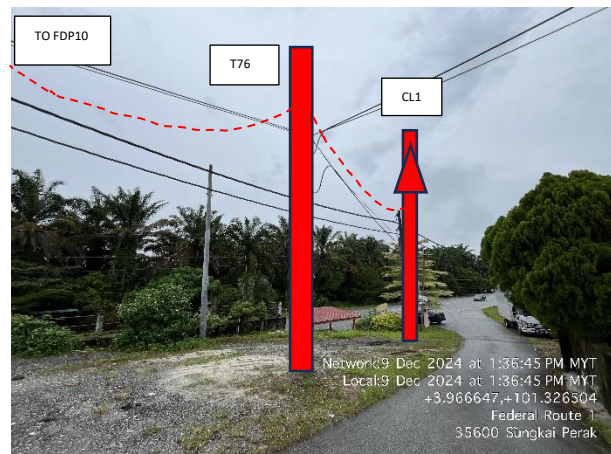
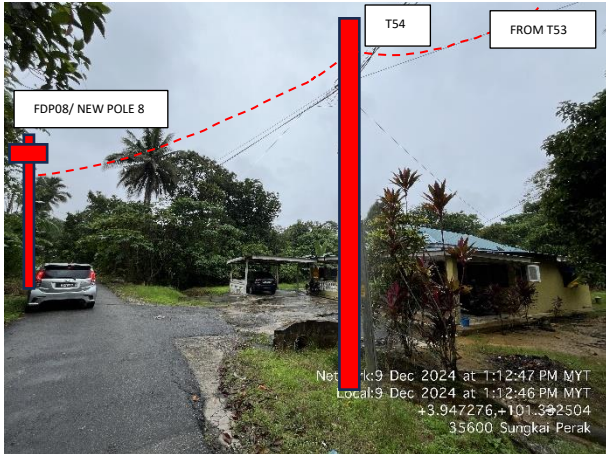
85	T084	41	3.9677896	101.3258731	JKR PERSEKUTUAN
86	T085	40	3.9681076	101.325695	JKR PERSEKUTUAN
87	T086	38	3.9683999	101.325507	JKR PERSEKUTUAN
88	T087	44	3.9687326	101.3252976	JKR PERSEKUTUAN
89	T088	41	3.9688525	101.3256488	MAJLIS DAERAH TAPAH
90	T089	39	3.9689598	101.3259805	MAJLIS DAERAH TAPAH
91	T090	8	3.9689817	101.3260465	MAJLIS DAERAH TAPAH
92	T091	32	3.9687126	101.3261421	MAJLIS DAERAH TAPAH
93	T092	26	3.969041	101.326274	MAJLIS DAERAH TAPAH
94	T093	19	3.9690415	101.3262745	MAJLIS DAERAH TAPAH
95	T094	39	3.9687573	101.3265546	MAJLIS DAERAH TAPAH
96	T095	37	3.9692834	101.3258854	MAJLIS DAERAH TAPAH
97	MH1	0	3.9609009	101.3294292	JKR PERSEKUTUAN
98	MH2	53	3.9603937	101.3294069	JKR PERSEKUTUAN
99	MH3	0	3.952175	101.331809	JKR PERSEKUTUAN
100	MH4	80	3.951531	101.331976	JKR PERSEKUTUAN

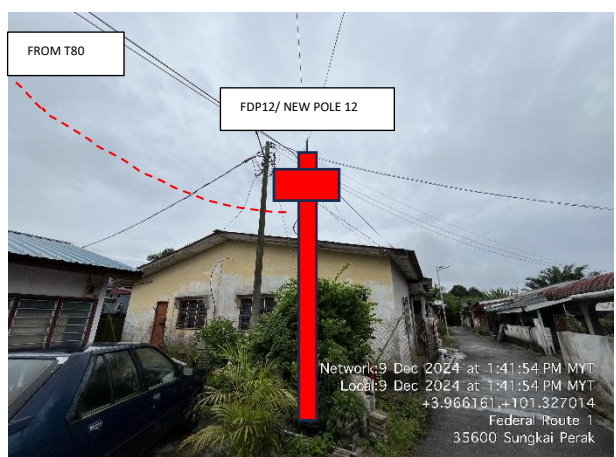
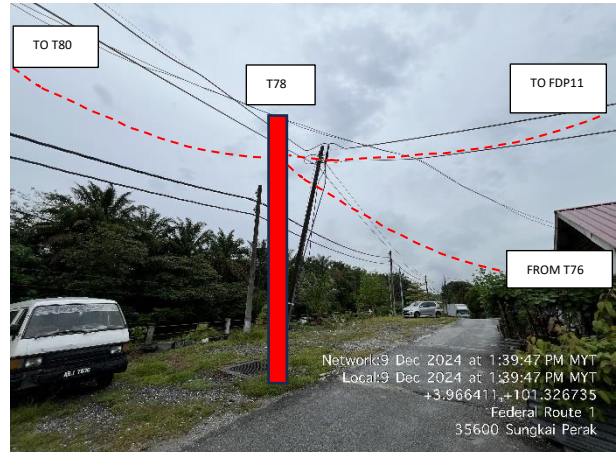
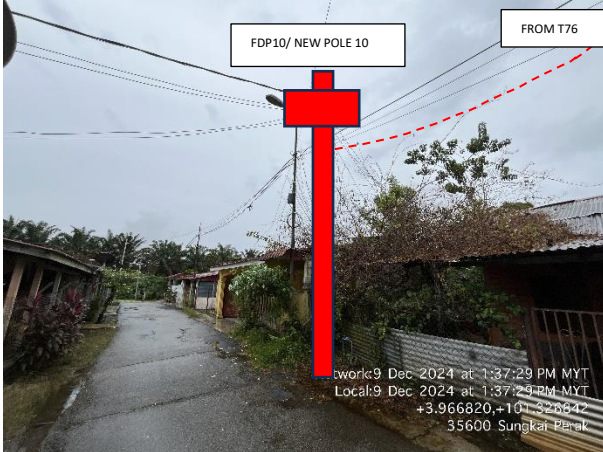
5.0 SITE PHOTOS – PROPOSED NEW POLE

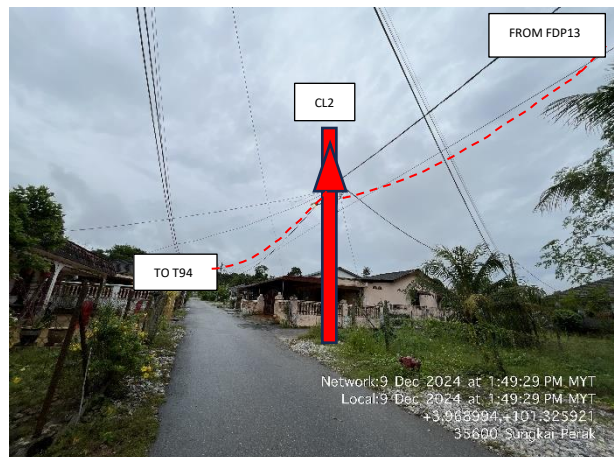
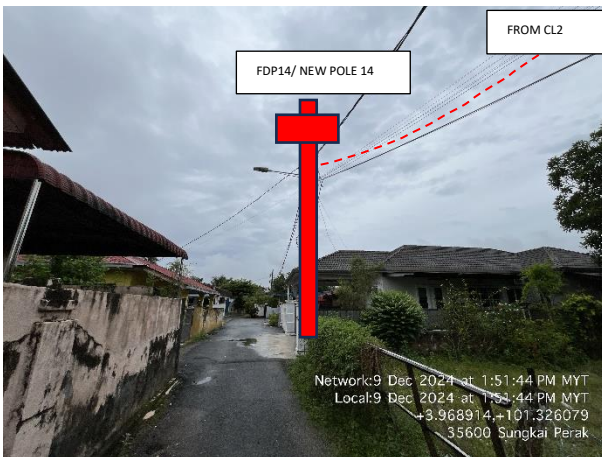
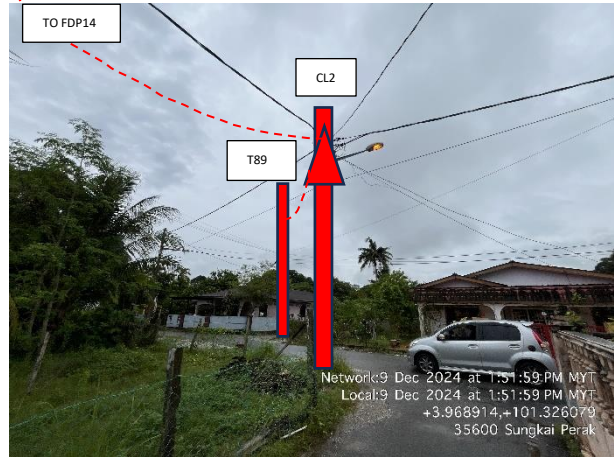










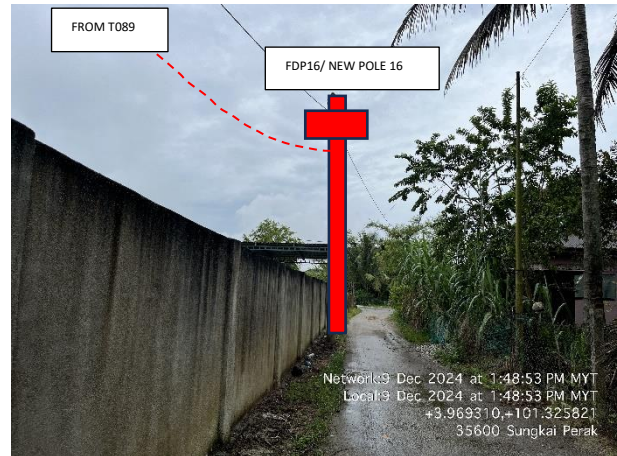
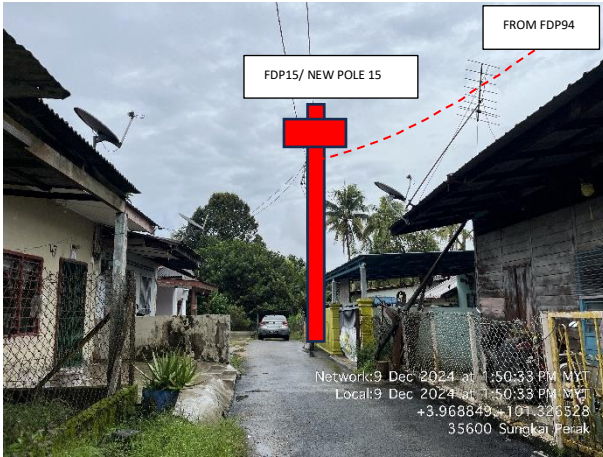






PROJEK PENYEDIAAN DAN PENYELENGGARAAN POINT OF PRESENCE (POP)
FASA 2: HAB INFRASTRUKTUR GENTIAN OPTIK BERHAMPIRAN DENGAN
SEKOLAH, KAWASAN PERINDUSTRIAN, PREMIS KERAJAAN DAN KOMUNITI
SEKITARNYA OLEH KEMENTERIAN KOMUNIKASI MALAYSIA - ZON UTARA
(KKMM.400-11/17/132(1))



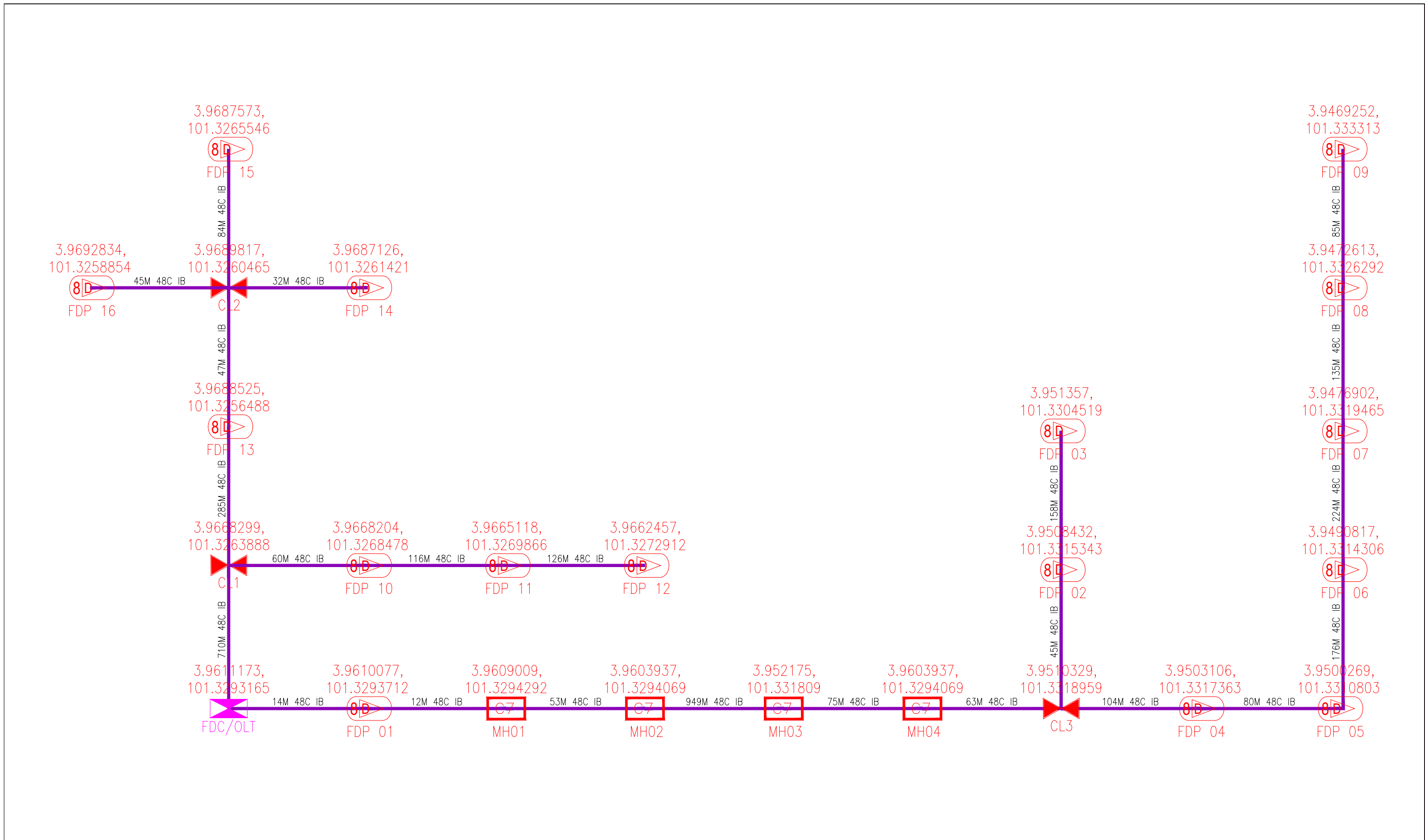
A member of OCK Group Berhad



	<p>PROJEK PENYEDIAAN DAN PENYELENGGARAAN POINT OF PRESENCE (POP) FASA 2: HAB INFRASTRUKTUR GENTIAN OPTIK BERHAMPIRAN DENGAN SEKOLAH, KAWASAN PERINDUSTRIAN, PREMIS KERAJAAN DAN KOMUNITI SEKITARNYA OLEH KEMENTERIAN KOMUNIKASI MALAYSIA - ZON UTARA (KKMM.400-11/17/132(1))</p>	 A member of OCK Group Berhad
---	--	---

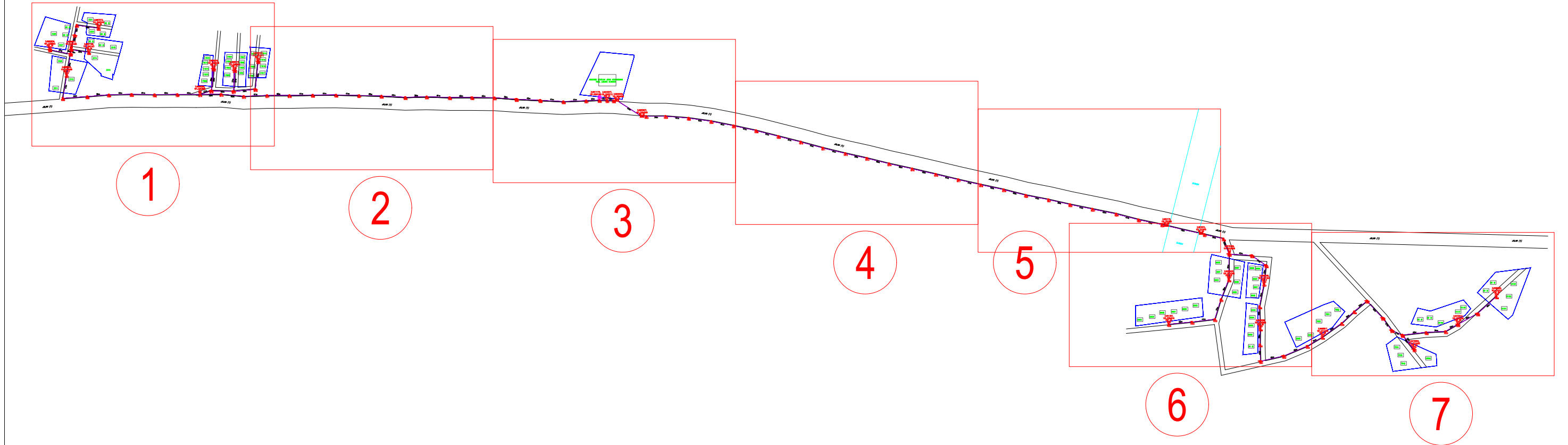
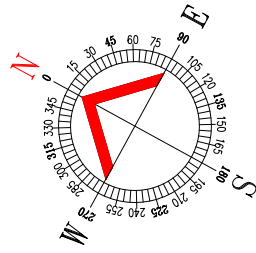
6.0 3RD PARTIES DEPENDENCIES

NO	LOCAL COUNCIL / AUTHORITY	REMARK
1	NA	NA



LEGEND	NOS.		NOS.		NOS.		NOS.		NOS.		NOS.
	12C FOC	Installed 1:4 splitter in FDC		Installed Pole (9m)		New Manhole(JRC7)		Tension Small / Tension Big		MH NO.	
	24C FOC	FDP with (1:8) splitter		Installed Riser		House Number		Existing Manhole		Existing TNB Pole NO.	
	48C FOC	Closure		Suspension Big		Existing TNB Pole		Closure NO.		New Pole NO.	
	96C FOC	New Manhole (PIT)		Suspension Small		LOOP		FDP NO.		SEE A-A in this page	
	144C FOC	Installed Pole (7.5M)		FDC		FDP Boundary		FDC NO.		SEE SHEET XXX	

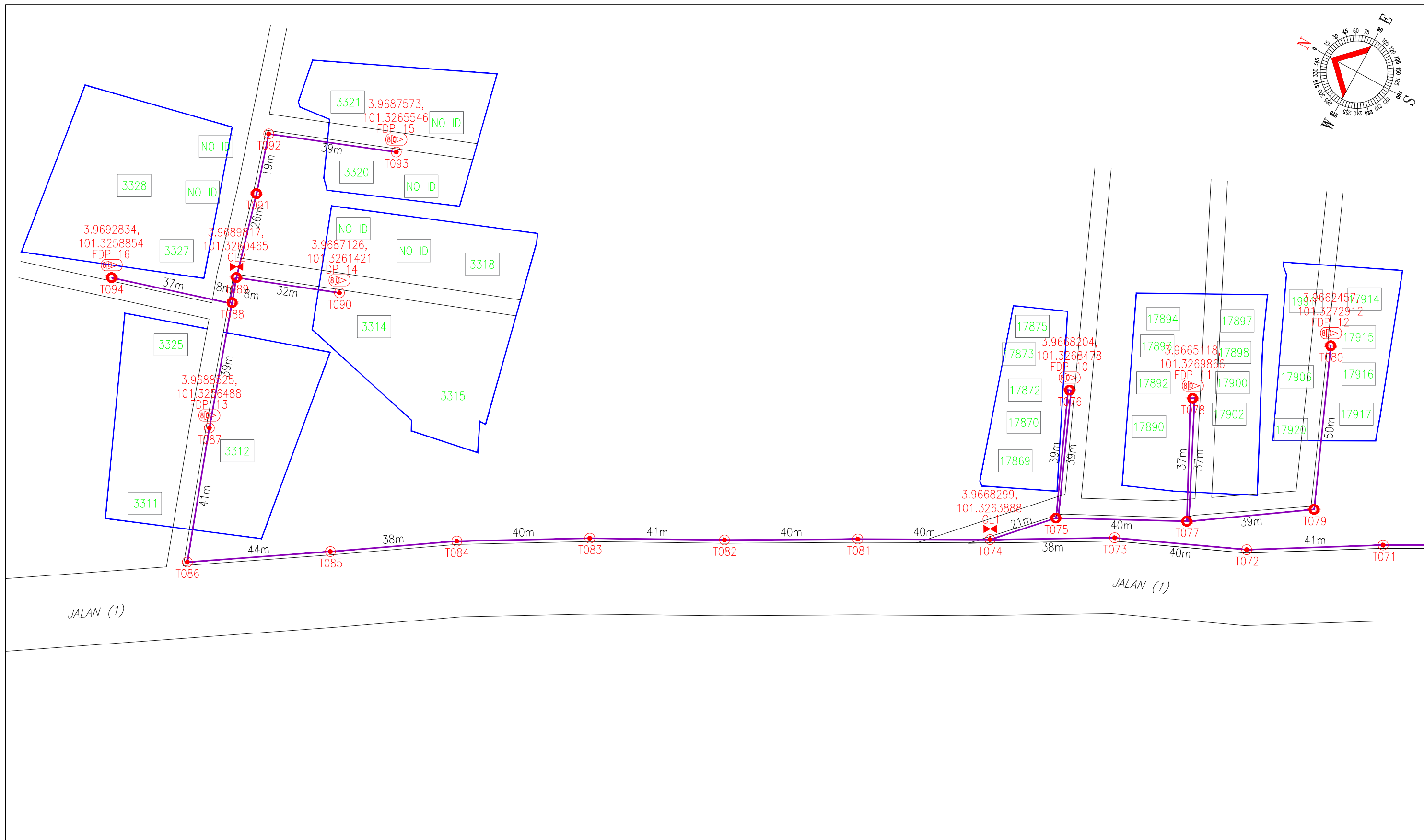
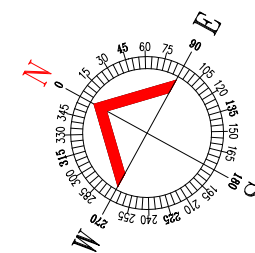
KEY PLAN : POP2 PROJECT IN PERAK	MAIN CONTRACTOR 	SUB-CONTRACTOR : A member of FOCK Group Berhad	PROJECT TITLE : CONTRACTOR FOR SURVEY, TECHNICAL PROPOSAL AND WAYLEAVE, & PERMIT APPROVAL -POP2 PROJECT	DRAWING TITLE: SINGLE LINE DRAWING ABD0086 SEKOLAH JENIS KEBANGSAAN (TAMIL) LADANG SUNGKAI	Design By : FITRI Date : 12/12/2024
				PROJECT PHASE: POP2	Drawn By : FITRI Scale : N.T.S Checked By : AMSYAR Job Number : JOB_NUMBER
				DRAWING NUMBER : ABD0086-SLD-01	Sheet : 1/1
				THIS PRINT AND ITS COPYRIGHT ARE THE PROPERTY OF ALLO TECHNOLOGY SDN BHD	Size : A3



LEGEND	NOS.	NOS.	NOS.	NOS.	NOS.	NOS.	NOS.	NOS.
12C FOC	Installed 1:4 splitter in FDC	Installed Pole (9m)	C7	New Manhole(JRC7)	TS / TB	Tension Small / Tension Big	MH1	MH NO.
24C FOC	FDP with (1:8) splitter	Installed Riser	#	House Number	Existing Manhole	TKS-1	Existing TNB Pole NO.	
48C FOC	Closure	Suspension Big	SB	Existing TNB Pole	LOOP			
96C FOC	New Manhole (PIT)	Suspension Small	SS	LOOP	FDP1	FDP NO.	SEE A-A in this page	
144C FOC	Installed Pole (7.5M)	FDC	FX	FDP Boundary	FDC	FDC NO.	SEE SHEET XXX	

ACTUAL HOMEPASS :

KEY PLAN : POP2 PROJECT IN PERAK	 	MAIN CONTRACTOR	 A member of FOCK Group Berhad	SUB-CONTRACTOR :	PROJECT TITLE : CONTRACTOR FOR SURVEY, TECHNICAL PROPOSAL AND WAYLEAVE,& PERMIT APPROVAL -POP2 PROJECT	DRAWING TITLE: SINGLE LINE DRAWING ABD0086 SEKOLAH JENIS KEBANGSAAN (TAMIL) LADANG SUNGKAI	Design By : FITRI	Date : 12/12/2024
						PROJECT PHASE: POP2	Checked By : AMSYAR	Job Number : JOB_NUMBER
						DRAWING NUMBER : ABD0086-CD-01	Sheet : INDEX	Size : A3
THIS PRINT AND ITS COPYRIGHT ARE THE PROPERTY OF ALLO TECHNOLOGY SDN BHD								

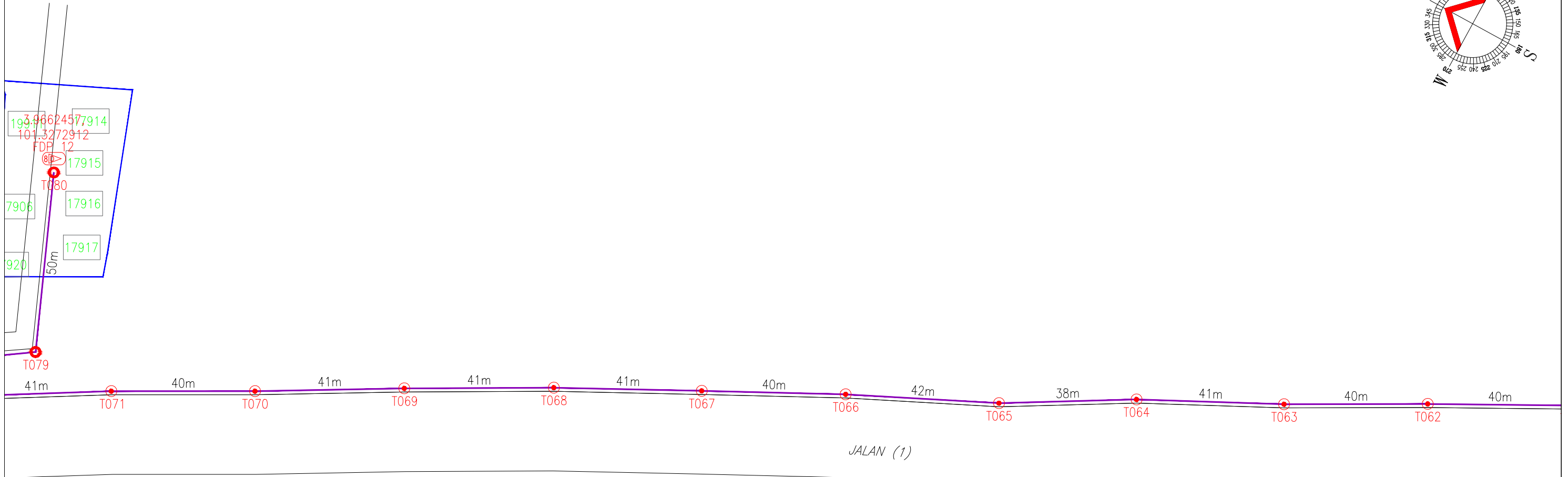
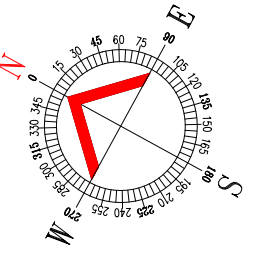


LEGEND	NOS.	NOS.	NOS.	NOS.	NOS.	NOS.	NOS.	
12C FOC	Installed 1:4 splitter in FDC	Installed Pole (9m)	C7	New Manhole(JRC7)	TS / TB	Tension Small / Tension Big	MH1	MH NO.
24C FOC	FDP with (1:8) splitter	Installed Riser	#	House Number	TKS-1	Existing Manhole	TKS-1	Existing TNB Pole NO.
48C FOC	Closure	Suspension Big	●	Existing TNB Pole	C01	Closure NO.	P001	New Pole NO.
96C FOC	New Manhole (PIT)	Suspension Small	○	LOOP	FDP1	FDP NO.	(A)	SEE A-A in this page
144C FOC	Installed Pole (7.5M)	FDC	○	FDP Boundary	FDC	FDC NO.	(A)	SEE SHEET XXX

ACTUAL HOMEPASS :

KEY PLAN : POP2 PROJECT IN PERAK	MAIN CONTRACTOR PRIVASAT	SUB-CONTRACTOR : A member of FOCK Group Berhad	PROJECT TITLE : CONTRACTOR FOR SURVEY, TECHNICAL PROPOSAL AND WAYLEAVE, & PERMIT APPROVAL -POP2 PROJECT	DRAWING TITLE: SINGLE LINE DRAWING ABD0086 SEKOLAH JENIS KEBANGSAAN (TAMIL) LADANG SUNGKAI	Design By : FITRI Drawn By : FITRI Checked By : AMSYAR	Date : 12/12/2024 Scale : N.T.S Job Number : JOB_NUMBER
				PROJECT PHASE: POP2	DRAWING NUMBER : ABD0086-CD-01	Sheet : 01/07

THIS PRINT AND ITS COPYRIGHT ARE THE PROPERTY OF ALLO TECHNOLOGY SDN BHD Size : A3

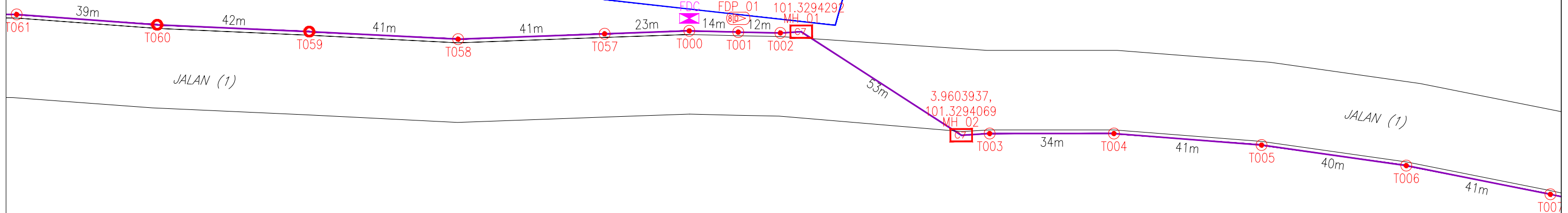
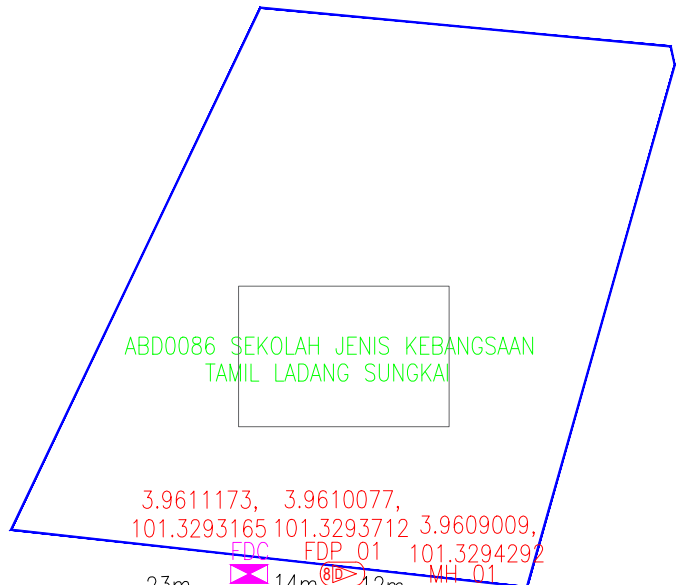
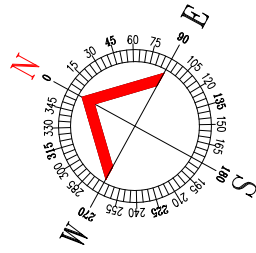


LEGEND	NOS.		NOS.		NOS.		NOS.		NOS.		NOS.
	12C FOC	Installed 1:4 splitter in FDC		Installed Pole (9m)		New Manhole(JRC7)		Tension Small / Tension Big		MH NO.	
	24C FOC	FDP with (1:8) splitter		Installed Riser		House Number		Existing Manhole		Existing TNB Pole NO.	
	48C FOC	Closure		Suspension Big		Existing TNB Pole		Closure NO.		New Pole NO.	
	96C FOC	New Manhole (PIT)		Suspension Small		LOOP		FDP NO.		SEE A-A in this page	
	144C FOC	Installed Pole (7.5M)		FDC		FDP Boundary		FDC NO.		SEE SHEET XXX	

ACTUAL HOMEPASS :

KEY PLAN : POP2 PROJECT IN PERAK	MAIN CONTRACTOR 	SUB-CONTRACTOR : A member of FOCK Group Berhad	PROJECT TITLE : CONTRACTOR FOR SURVEY, TECHNICAL PROPOSAL AND WAYLEAVE, & PERMIT APPROVAL -POP2 PROJECT	DRAWING TITLE: SINGLE LINE DRAWING ABD0086 SEKOLAH JENIS KEBANGSAAN (TAMIL) LADANG SUNGKAI 1	Design By : FITRI Drawn By : FITRI Checked By : AMSYAR	Date : 12/12/2024 Scale : N.T.S Job Number : JOB_NUMBER
				PROJECT PHASE: POP2	DRAWING NUMBER : ABD0086-CD-01	Sheet : 02/07 Size : A3

THIS PRINT AND ITS COPYRIGHT ARE THE PROPERTY OF ALLO TECHNOLOGY SDN BHD

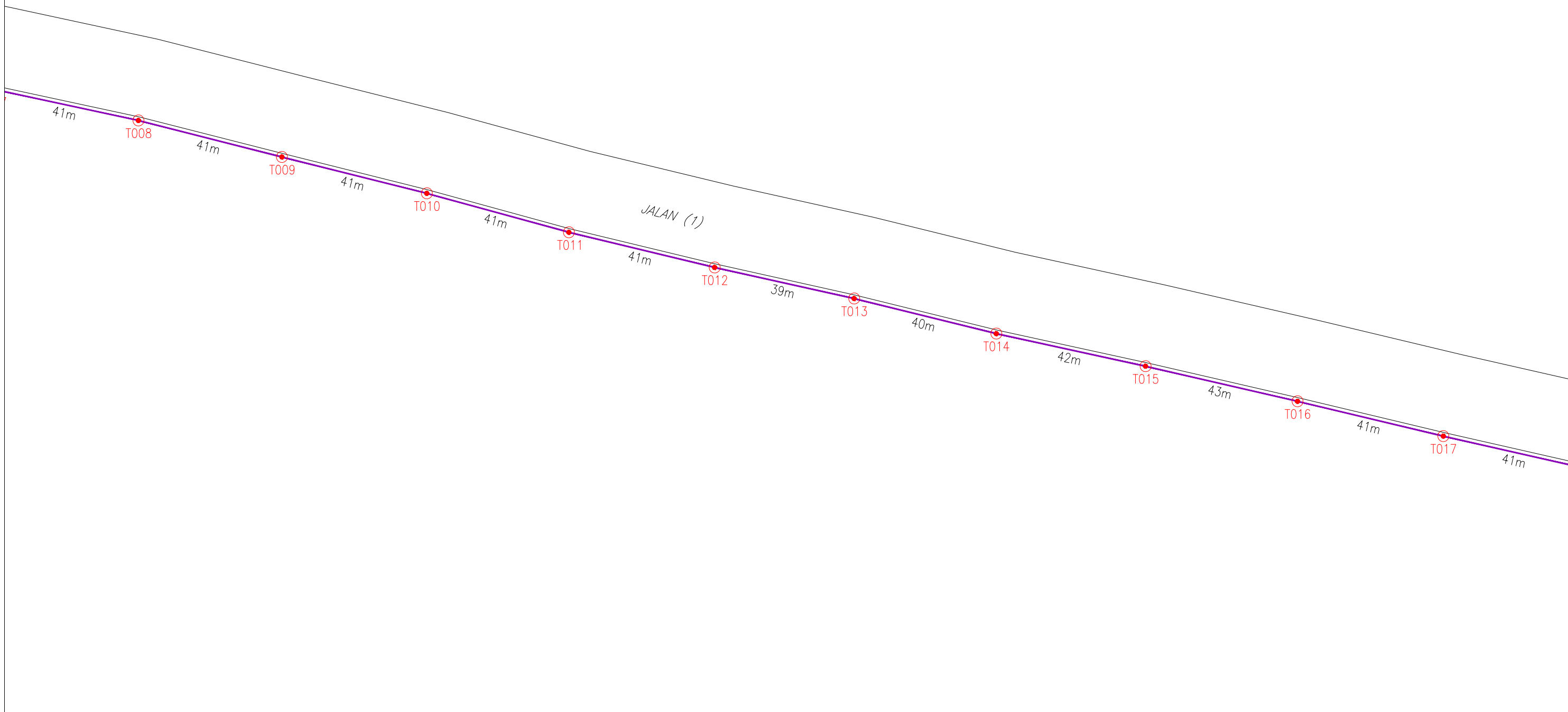
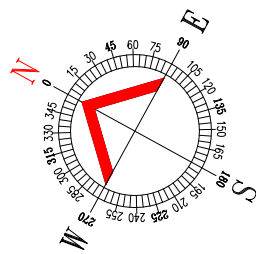


LEGEND	NOS.	NOS.	NOS.	NOS.	NOS.	NOS.	NOS.	NOS.
12C FOC	Installed 1:4 splitter in FDC	Installed Pole (9m)	C7	New Manhole(JRC7)	TS / TB	Tension Small / Tension Big	MH1	MH NO.
24C FOC	FDP with (1:8) splitter	Installed Riser	#	House Number	Existing Manhole	TKS-1	Existing TNB Pole NO.	
48C FOC	Closure	Suspension Big		Existing TNB Pole	C01	Closure NO.	P001	New Pole NO.
96C FOC	New Manhole (PIT)	Suspension Small		LOOP	FDP1	FDP NO.	(A) SEE A-A in this page	(A)
144C FOC	Installed Pole (7.5M)	FDC		FDP Boundary	FDC	FDC NO.	(A) SEE SHEET XXX	(A)

ACTUAL HOMEPASS :

KEY PLAN : POP2 PROJECT IN PERAK	MAIN CONTRACTOR PRIVASAT	SUB-CONTRACTOR : A member of FOCK Group Berhad	PROJECT TITLE : CONTRACTOR FOR SURVEY, TECHNICAL PROPOSAL AND WAYLEAVE, & PERMIT APPROVAL -POP2 PROJECT	DRAWING TITLE: SINGLE LINE DRAWING ABD0086 SEKOLAH JENIS KEBANGSAAN (TAMIL) LADANG SUNGKAI	Design By : FITRI Drawn By : FITRI Checked By : AMSYAR	Date : 12/12/2024 Scale : N.T.S Job Number : JOB_NUMBER
				PROJECT PHASE: POP2	DRAWING NUMBER : ABD0086-CD-01	Sheet : 03/07

THIS PRINT AND ITS COPYRIGHT ARE THE PROPERTY OF ALLO TECHNOLOGY SDN BHD
 Size : A3

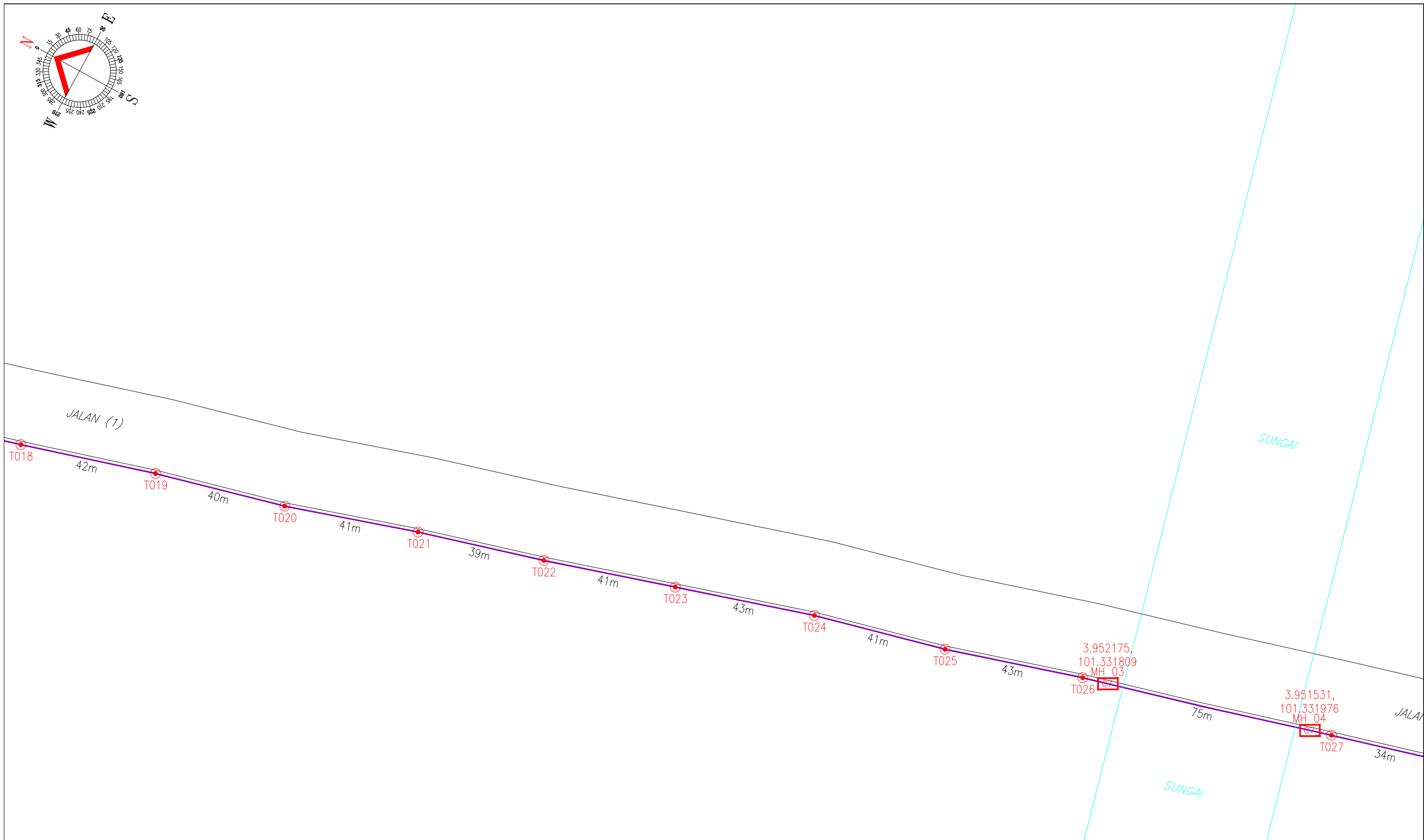
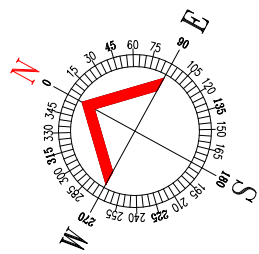


LEGEND	NOS.	NOS.	NOS.	NOS.	NOS.	NOS.	NOS.	NOS.	
	12C FOC		Installed Pole (9m)		New Manhole(JRC7)		Tension Small / Tension Big		MH NO.
	24C FOC		Installed Pole (7.5M)		House Number		Existing Manhole		Existing TNB Pole NO.
	48C FOC		Installed Pole (7.5M)		Suspension Big		Existing TNB Pole		Closure NO.
	96C FOC		Installed Pole (7.5M)		Suspension Small		LOOP		FDP NO.
	144C FOC		Installed Pole (7.5M)		FDC		FDP Boundary		FDC NO.

ACTUAL HOMEPASS :

KEY PLAN : POP2 PROJECT IN PERAK	MAIN CONTRACTOR 	SUB-CONTRACTOR : A member of FOCK Group Berhad	PROJECT TITLE : CONTRACTOR FOR SURVEY, TECHNICAL PROPOSAL AND WAYLEAVE, & PERMIT APPROVAL -POP2 PROJECT	DRAWING TITLE: SINGLE LINE DRAWING ABD0086 SEKOLAH JENIS KEBANGSAAN (TAMIL) LADANG SUNGKAI	Design By : FITRI Drawn By : FITRI Checked By : AMSYAR	Date : 12/12/2024 Scale : N.T.S Job Number : JOB_NUMBER
				PROJECT PHASE: POP2	DRAWING NUMBER : ABD0086-CD-01	Sheet : 04/07 Size : A3

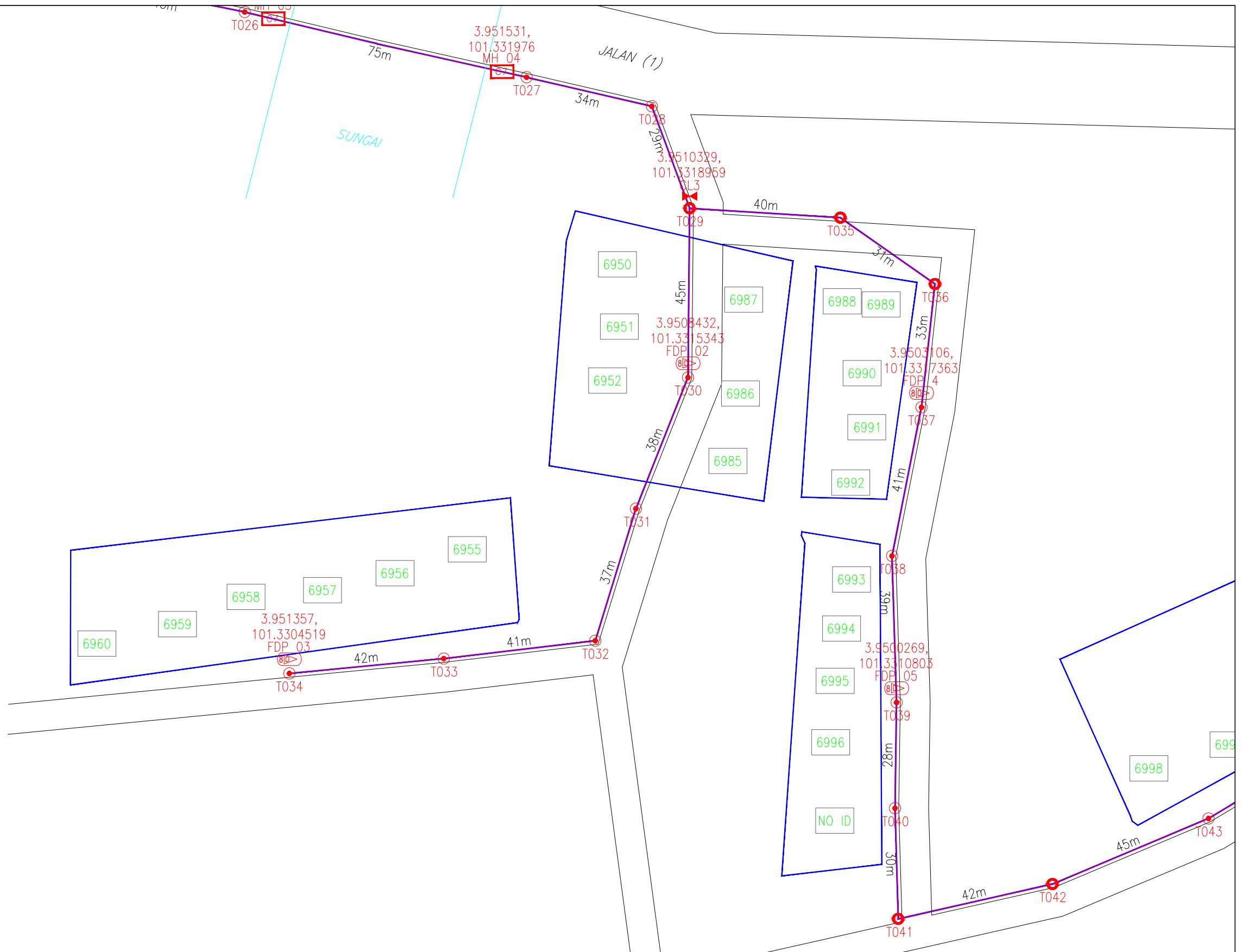
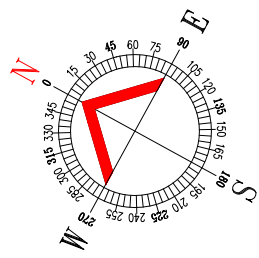
THIS PRINT AND ITS COPYRIGHT ARE THE PROPERTY OF ALLO TECHNOLOGY SDN BHD



LEGEND	NOS.	NOS.	NOS.	NOS.	NOS.	NOS.	NOS.	
12C FOC	Installed 1:4 splitter in FDC	Installed Pole (9m)	C7	New Manhole(JRC7)	TS / TB	Tension Small / Tension Big	MH1	MH NO.
24C FOC	FDP with (1:8) splitter	Installed Riser	#	House Number	TKS-1	Existing Manhole	TKS-1	Existing TNB Pole NO.
48C FOC	Closure	Suspension Big	SB	Existing TNB Pole	C01	Closure NO.	P001	New Pole NO.
96C FOC	New Manhole (PIT)	Suspension Small	SS	LOOP	FDP1	FDP NO.	(A)	SEE A-A in this page
144C FOC	Installed Pole (7.5M)	FDC	FX	FDP Boundary	FDC	FDC NO.	(A)	SEE SHEET XXX

ACTUAL HOMEPASS :

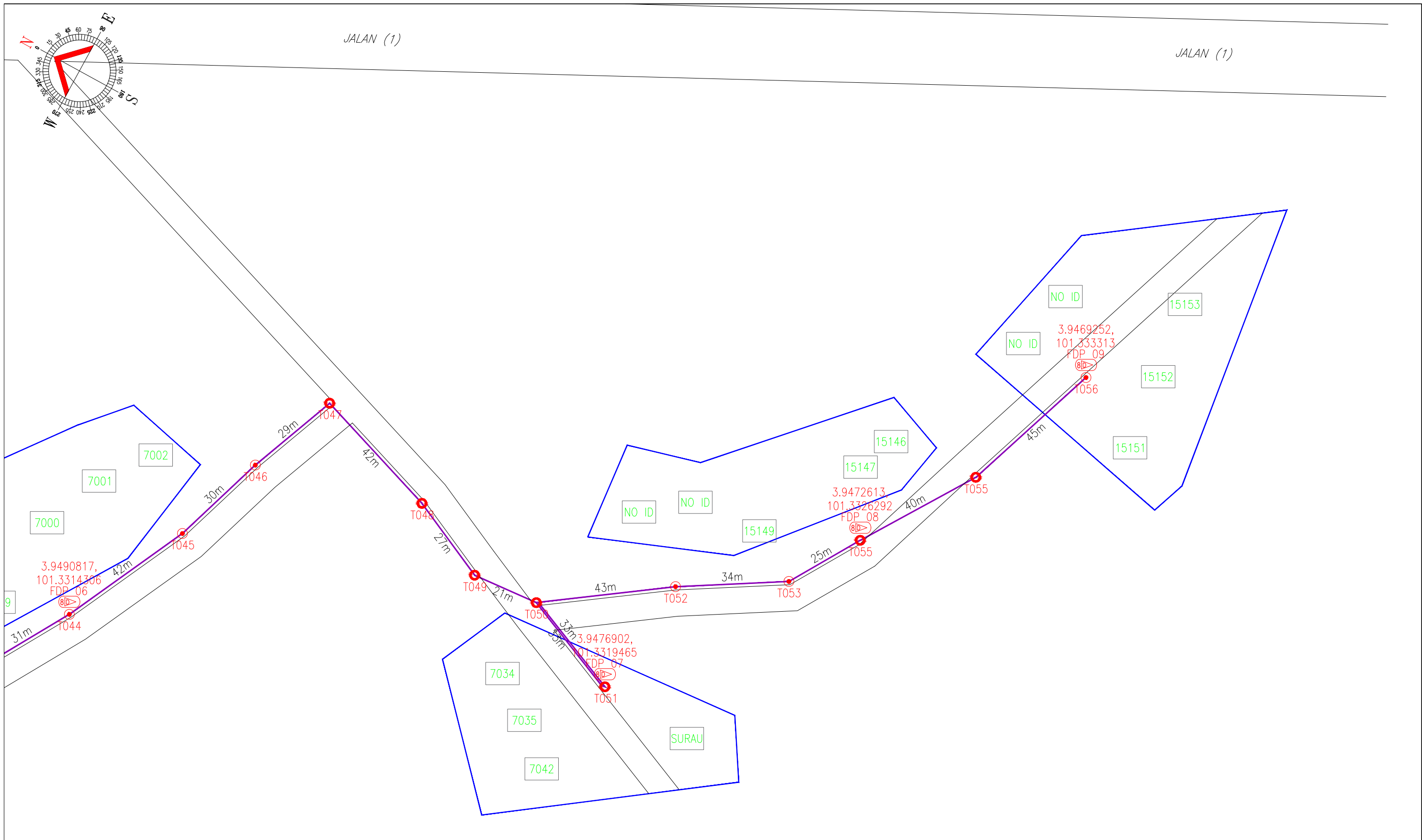
KEY PLAN : POP2 PROJECT IN PERAK	MAIN CONTRACTOR 	SUB-CONTRACTOR : A member of FOCK Group Berhad	PROJECT TITLE : CONTRACTOR FOR SURVEY, TECHNICAL PROPOSAL AND WAYLEAVE, & PERMIT APPROVAL -POP2 PROJECT	DRAWING TITLE: SINGLE LINE DRAWING ABD0086 SEKOLAH JENIS KEBANGSAAN (TAMIL) LADANG SUNGKAI	Design By : FITRI Drawn By : FITRI Checked By : AMSYAR	Date : 12/12/2024 Scale : N.T.S Job Number : JOB_NUMBER
				PROJECT PHASE: POP2	DRAWING NUMBER : ABD0086-CD-01	Sheet : 05/07
THIS PRINT AND ITS COPYRIGHT ARE THE PROPERTY OF ALLO TECHNOLOGY SDN BHD					Size : A3	



LEGEND	NOS.	NOS.	NOS.	NOS.	NOS.	NOS.	NOS.
12C FOC	Installed 1:4 splitter in FDC	Installed Pole (9m)	New Manhole(JRC7)	TS / TB	Tension Small / Tension Big	MH1	MH NO.
24C FOC	FDP with (1:8) splitter	Installed Riser	#	House Number	Existing Manhole	TKS-1	Existing TNB Pole NO.
48C FOC	Closure	Suspension Big	Existing TNB Pole	C01	Closure NO.	P001	New Pole NO.
96C FOC	New Manhole (PIT)	Suspension Small	LOOP	FDP1	FDP NO.	(A) SEE A-A in this page (A)	
144C FOC	Installed Pole (7.5M)	FDC	FDP Boundary	FDC	FDC NO.	(A) SEE SHEET XXX (A)	

ACTUAL HOMEPASS :

KEY PLAN : POP2 PROJECT IN PERAK	MAIN CONTRACTOR PRIVASAT	SUB-CONTRACTOR : A member of FOCK Group Berhad	PROJECT TITLE : CONTRACTOR FOR SURVEY, TECHNICAL PROPOSAL AND WAYLEAVE, & PERMIT APPROVAL -POP2 PROJECT	DRAWING TITLE: SINGLE LINE DRAWING ABD0086 SEKOLAH JENIS KEBANGSAAN (TAMIL) LADANG SUNGKAI	Design By : FITRI Date : 12/12/2024
				PROJECT PHASE: POP2	Drawn By : FITRI Scale : N.T.S Checked By : AMSYAR Job Number : JOB_NUMBER
				DRAWING NUMBER : ABD0086-CD-01	Sheet : 06/07
				THIS PRINT AND ITS COPYRIGHT ARE THE PROPERTY OF ALLO TECHNOLOGY SDN BHD	Size : A3



LEGEND	NOS.	NOS.	NOS.	NOS.	NOS.	NOS.	NOS.
	12C FOC		Installed Pole (9m)		New Manhole(JRC7)		Tension Small / Tension Big
	24C FOC		Installed Riser		House Number		Existing Manhole
	48C FOC		Installed 1:4 splitter in FDC		Existing TNB Pole		Existing TNB Pole NO.
	96C FOC		FDP with (1:8) splitter		LOOP		New Pole NO.
	144C FOC		Closure		FDP NO.		SEE A-A in this page
			New Manhole (PIT)		FDC NO.		SEE SHEET XXX
			Installed Pole (7.5M)		FDP Boundary		

ACTUAL HOMEPASS :

KEY PLAN : POP2 PROJECT IN PERAK	MAIN CONTRACTOR PRIVASAT	SUB-CONTRACTOR : A member of FOCK Group Berhad	PROJECT TITLE : CONTRACTOR FOR SURVEY, TECHNICAL PROPOSAL AND WAYLEAVE, & PERMIT APPROVAL -POP2 PROJECT	DRAWING TITLE: SINGLE LINE DRAWING ABD0086 SEKOLAH JENIS KEBANGSAAN (TAMIL) LADANG SUNGKAI	Design By : FITRI Drawn By : FITRI Checked By : AMSYAR	Date : 12/12/2024 Scale : N.T.S Job Number : JOB_NUMBER
				PROJECT PHASE: POP2	DRAWING NUMBER : ABD0086-CD-01	Sheet : 07/07 Size : A3

THIS PRINT AND ITS COPYRIGHT ARE THE PROPERTY OF ALLO TECHNOLOGY SDN BHD