

# TECHNICAL PROPOSAL

<b>PROJECT DESCRIPTION</b>	<b>MYGOV FTTH TH_CXXX PUSAT KOREKSIONAL CHENDERIANG (PENJARA KHAS PEMULIHAN DADAH) CHENDERIANG, TAPAH PERAK</b>
<b>PROJECT NUMBER</b>	TMNA/250244
<b>PREPARED BY</b>	NUR FATIHAH HIDAYAT
<b>COMPANY NAME</b>	MTK COMMUNICATION SDN.BHD
<b>DATE</b>	23 JUNE 2025
<b>REVISION</b>	04

# PROJECT DETAIL

BIL	INFO	DETAIL
1	PROJECT NAME	MYGOV FTTH TH_CXXX PUSAT KOREKSIONAL CHENDERIANG (PENJARA KHAS PEMULIHAN DADAH) CHENDERIANG, TAPAH PERAK
2	PROJECT NUMBER	TMNA/250244
3	TM NODE	TH
4	REGION	NORTHERN
5	NE ID	PRK
6	TOTAL FTTH PORTS	8
7	TOTAL PROPERTY	1
8	RFSI DATE	04-JUN-25
9	PF ( % )	-%

# Mini FDC Location & Boundary



Sentosa Eco Park  
Temporarily closed

C

MINI FDC TH

**NEW PROPOSED**  
**Mini FDC**  
**TH\_CXXX**  
**(4.310823,**  
**101.231696)**



MTK COMMUNICATION SDN BHD



ACCESS NETWORK DEVELOPMENT (AND)  
KAWASAN AND  
Fibre

IBUSAWAT: TH

TAJUK PROJEK:  
MYGOV FTTH TH\_CXXX  
PUSAT KOREKSIONAL  
CHENDERIANG  
(PENJARA KHAS  
PEMULIHAN DADAH)  
CHENDERIANG, TAPAH  
PERAK (TMNA/250244)

DISEDIAKAN OLEH

NUR FATIMAH HIDAYAT  
SITE OFFICER  
018-2492640  
T/T

# Mini FDC Details and Illustration

## Propose Location



MTK COMMUNICATION SDN BHD



ACCESS NETWORK DEVELOPMENT (AND )  
KAWASAN AND  
Fibre

IBUSAWAT: TH

TAJUK PROJEK:  
MYGOV FTTH TH\_CXXX  
PUSAT KOREKSIONAL  
CHENDERIANG  
(PENJARA KHAS  
PEMULIHAN DADAH)  
CHENDERIANG, TAPAH  
PERAK (TMNA/250244)

DISEDIAKAN OLEH

**NUR FATIMAH HIDAYAT**  
SITE OFFICER  
018-2492640  
T/T

No	Info	Road/Location	Type	Total Splitter	Coordinate
1	Mini FDC	KAMPUNG SUNGAI CINCIN, 35300 CHENDERIANG, PERAK	Mini	4	4.310823, 101.231696

# FDP Boundary



MTK COMMUNICATION SDN BHD



ACCESS NETWORK DEVELOPMENT (AND)  
KAWASAN AND  
Fibre

IBUSAWAT: TH

TAJUK PROJEK:

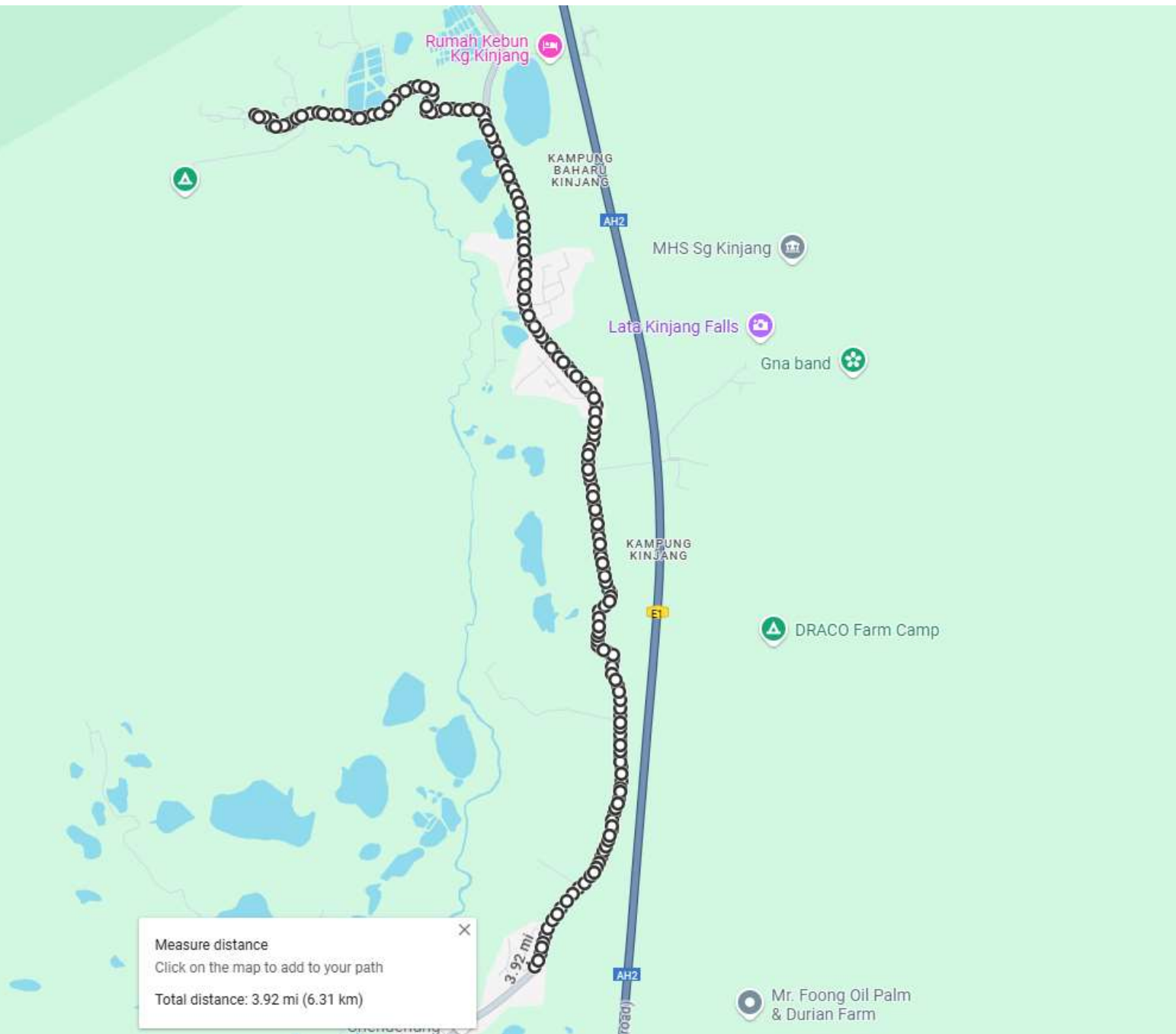
MYGOV FTTH TH\_CXXX  
PUSAT KOREKSIONAL  
CHENDERIANG  
(PENJARA KHAS  
PEMULIHAN DADAH)  
CHENDERIANG, TAPAH  
PERAK (TMNA/250244)

DISEDIAKAN OLEH

NUR FATIMAH HIDAYAT  
SITE OFFICER  
018-2492640

T/T

# New Pole Concrete On Site



## Remark:

1. Installation of new Pole concrete on site spanning 6.3km

2. Total Pole:  
Existing Pole Iron 7.6m = 1 pc  
Existing Pole Concrete 7.5m = 110 pcs

Pole Concrete 7.5m = 57 pcs  
Pole Concrete 9.0m = 5 pcs



MTK COMMUNICATION SDN BHD



ACCESS NETWORK DEVELOPMENT (AND) KAWASAN AND Fibre

IBUSAWAT: TH

TAJUK PROJEK:  
MYGOV FTTH TH\_CXXX  
PUSAT KOREKSIONAL  
CHENDERIANG  
(PENJARA KHAS  
PEMULIHAN DADAH)  
CHENDERIANG, TAPAH  
PERAK (TMNA/250244)

DISEDIAKAN OLEH

NUR FATIMAH HIDAYAT  
SITE OFFICER  
018-2492640

T/T

## New Pole details (JALAN JKR)

No	Pole Type	GPS Coordinate
1	POLE CONCRETE 7.5M	4.277980275577965, 101.24772381836976
2	POLE CONCRETE 7.5M	4.278251088944217, 101.24772053405711
3	POLE CONCRETE 7.5M	4.278519949877956, 101.24773538137636
4	POLE CONCRETE 7.5M	4.27867800770834, 101.2478218179639
5	POLE CONCRETE 7.5M	4.2789319394985865, 101.24791178611996
6	POLE CONCRETE 7.5M	4.2863127221871995, 101.24709328320235
7	POLE CONCRETE 7.5M	4.286579357118384, 101.2469883438997
8	POLE CONCRETE 7.5M	4.292128588812404, 101.24698647021796
9	POLE CONCRETE 7.5M	4.300347696550002, 101.24481578337837
10	POLE CONCRETE 7.5M	4.3005535618613955, 101.24464009655388
11	POLE CONCRETE 7.5M	4.300837633710844, 101.24442236734848
12	POLE CONCRETE 7.5M	4.301130857547212, 101.24420709998682
13	POLE CONCRETE 7.5M	4.301423026393707, 101.24399520922736
14	POLE CONCRETE 7.5M	4.3020839399692665, 101.24369637107313
15	POLE CONCRETE 7.5M	4.302297290105963, 101.24362749638695
16	POLE CONCRETE 7.5M	4.302427633356149, 101.24360552197093
17	POLE CONCRETE 7.5M	4.304205943979669, 101.24361057159275
18	POLE CONCRETE 7.5M	4.311121891183169, 101.24169796589389
19	POLE CONCRETE 7.5M	4.311391131708157, 101.24165437381485

## New Pole details (JALAN PDT)

No	Pole Type	GPS Coordinate
20	POLE CONCRETE 7.5M	4.31152738046066, 101.24142189381502
21	POLE CONCRETE 7.5M	4.3115756057968815, 101.24115426765236
22	POLE CONCRETE 7.5M	4.311523638258303, 101.24079659691925
23	POLE CONCRETE 7.5M	4.311556496910887, 101.24043978363207
24	POLE CONCRETE 7.5M	4.3115834354907205, 101.24007318568215
25	POLE CONCRETE 7.5M	4.311562161827739, 101.23980920833984
26	POLE CONCRETE 7.5M	4.311477163554076, 101.23955093542254
27	POLE CONCRETE 7.5M	4.311434440070248, 101.23928615187313
28	POLE CONCRETE 7.5M	4.311428375995406, 101.23901564888372
29	POLE CONCRETE 7.5M	4.311649024155427, 101.23895461241443
30	POLE CONCRETE 7.5M	4.311959453378521, 101.23913528366165
31	POLE CONCRETE 7.5M	4.3122333900313645, 101.23929191641328
32	POLE CONCRETE 7.5M	4.312502099057769, 101.23927278813368
33	POLE CONCRETE 7.5M	4.31250831086376, 101.23927266387363
34	POLE CONCRETE 7.5M	4.3125566761655785, 101.23901145683719
35	POLE CONCRETE 7.5M	4.312613911585499, 101.2386512094205
36	POLE CONCRETE 7.5M	4.312615070101462, 101.23838045487751
37	POLE CONCRETE 7.5M	4.31246633698233, 101.23805131346303
38	POLE CONCRETE 7.5M	4.3122629430875765, 101.23775372122383
39	POLE CONCRETE 7.5M	4.3120134225370865, 101.237494767504
40	POLE CONCRETE 7.5M	4.311744199413995, 101.23725502177858
41	POLE CONCRETE 7.5M	4.311538109217155, 101.2370814465766
42	POLE CONCRETE 7.5M	4.311363872052915, 101.23687534330658

## New Pole details

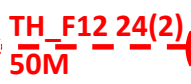
No	Pole Type	GPS Coordinate
43	POLE CONCRETE 7.5M	4.311296411355919, 101.23652043878693
44	POLE CONCRETE 7.5M	4.3112288823901554, 101.23616626684597
45	POLE CONCRETE 7.5M	4.311151188814922, 101.2359084375794
46	POLE CONCRETE 7.5M	4.311123618481346, 101.23563700446229
47	POLE CONCRETE 7.5M	4.3112111246981275, 101.235289174103
48	POLE CONCRETE 7.5M	4.311285008654932, 101.2349319813203
49	POLE CONCRETE 7.5M	4.3113104999725, 101.23456839881776
50	POLE CONCRETE 7.5M	4.311333481962428, 101.23420726072862
51	POLE CONCRETE 7.5M	4.311367575317342, 101.23393871670942
52	POLE CONCRETE 7.5M	4.3113541828278645, 101.23357798896487
53	POLE CONCRETE 7.5M	4.311166544320977, 101.23294142458454
54	POLE CONCRETE 7.5M	4.3110206192678335, 101.23271431246489
55	POLE CONCRETE 7.5M	4.310886247717814, 101.23247782367116
56	POLE CONCRETE 7.5M	4.3108112260136675, 101.23231447648702
57	POLE CONCRETE 7.5M	4.310744905149676, 101.23200717495023
58	POLE CONCRETE 9.0M	4.310792553880414, 101.23178754283205
59	POLE CONCRETE 9.0M	4.311041607457196, 101.23169733813572
60	POLE CONCRETE 9.0M	4.311161302989837, 101.23140635188032
61	POLE CONCRETE 9.0M	4.311200738150177, 101.23116644225942
62	POLE CONCRETE 9.0M	4.311349041581175, 101.23093977187123
63		
64		
65		



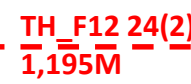
FD1 24(1)  
170M



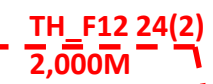
**NEW PROPOSED**  
Mini FDC  
TH\_CXXX  
(4.310823,  
101.231696)



**NEW SPUR**  
JOINT TH\_F12  
24C IB  
(4.310769,  
101.231881)



**NEW SPUR**  
JOINT TH\_F12  
24C IB  
(4.310769,  
101.231881)



**EXISTING**  
JOINT SPUR  
TH\_F12  
(4.3108199,  
101.2316853)

FOC 24C IB  
AR  
= 7,415M

**JT** JOINT UG

**(JT)** JOINT O/H

**(I)** FDP ON WALL



MTK COMMUNICATION SDN BHD



ACCESS NETWORK DEVELOPMENT (AND)  
KAWASAN AND  
Fibre

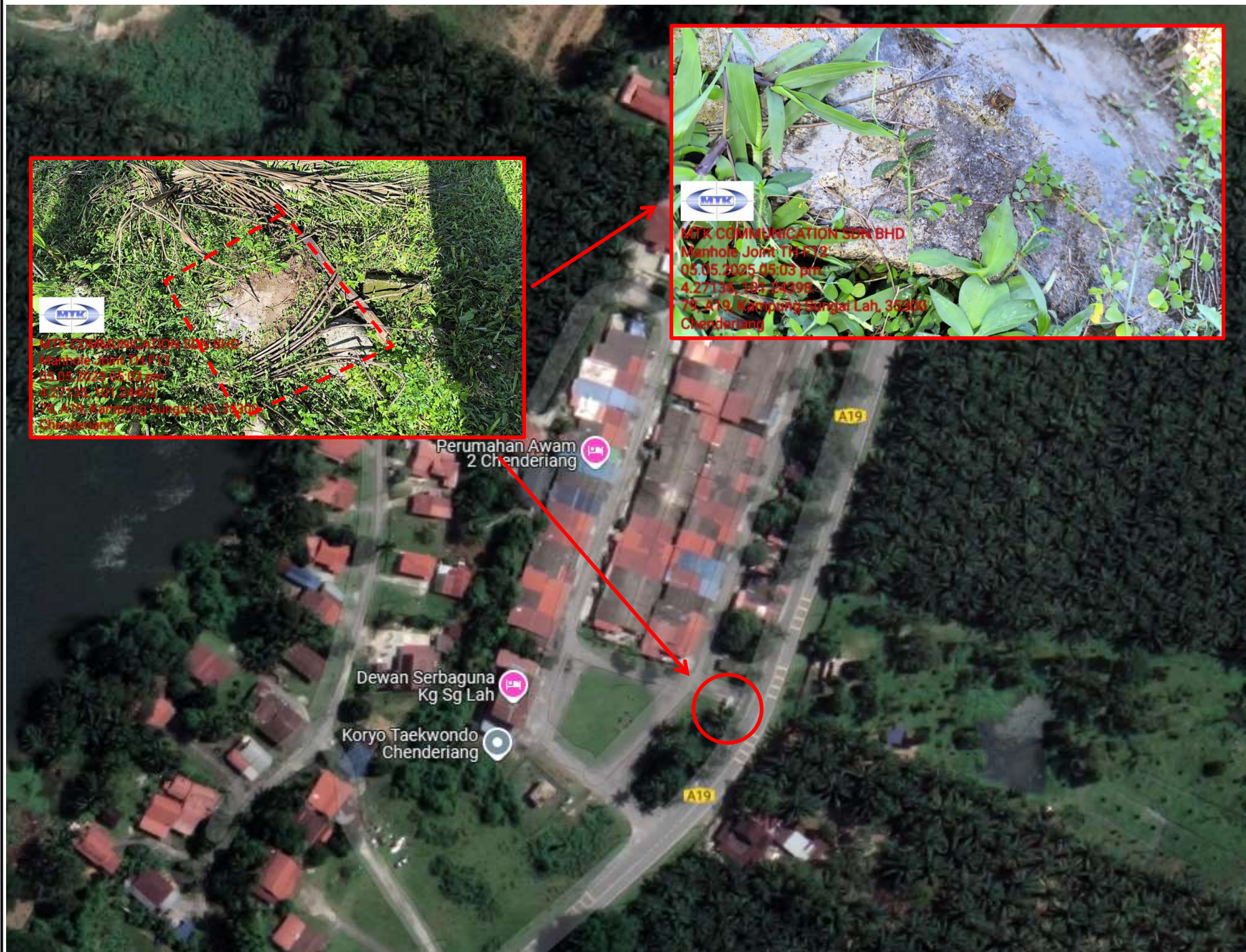
IBUSAWAT: TH

TAJUK PROJEK:  
MYGOV FTTH TH\_CXXX  
PUSAT KOREKSIONAL  
CHENDERIANG  
(PENJARA KHAS  
PEMULIHAN DADAH)  
CHENDERIANG, TAPAH  
PERAK (TMNA/250244)

DISEDIAKAN OLEH

**NUR FATIMAH HIDAYAT**  
SITE OFFICER  
018-2492640  
T/T

# Civil Work On Site



## Remark:

1. Breaking Open Concrete-Protected Manhole Cover To Pull FOC From Joint Spur TH\_F12 to Site spanning 7,415m
2. Protect Manhole Cover after finishing pulling, termination and splicing.



MTK COMMUNICATION SDN BHD



ACCESS NETWORK DEVELOPMENT (AND) KAWASAN AND Fibre

IBUSAWAT: TH

TAJUK PROJEK:  
MYGOV FTTH TH\_CXXX  
PUSAT KOREKSIONAL  
CHENDERIANG  
(PENJARA KHAS  
PEMULIHAN DADAH)  
CHENDERIANG, TAPAH  
PERAK (TMNA/250244)

DISEDIAKAN OLEH

**NUR FATIMAH HIDAYAT**  
SITE OFFICER  
018-2492640  
T/T

# Transport Pole To Site

Add destination

Leave now Options

[Send directions to your phone](#) [Copy link](#)

**via Menora Tunj/AH2/E1** **1 hr 48 min**  
 Fastest route, the usual traffic 129 km  
 ⚠️ This route has tolls.

[Details](#)

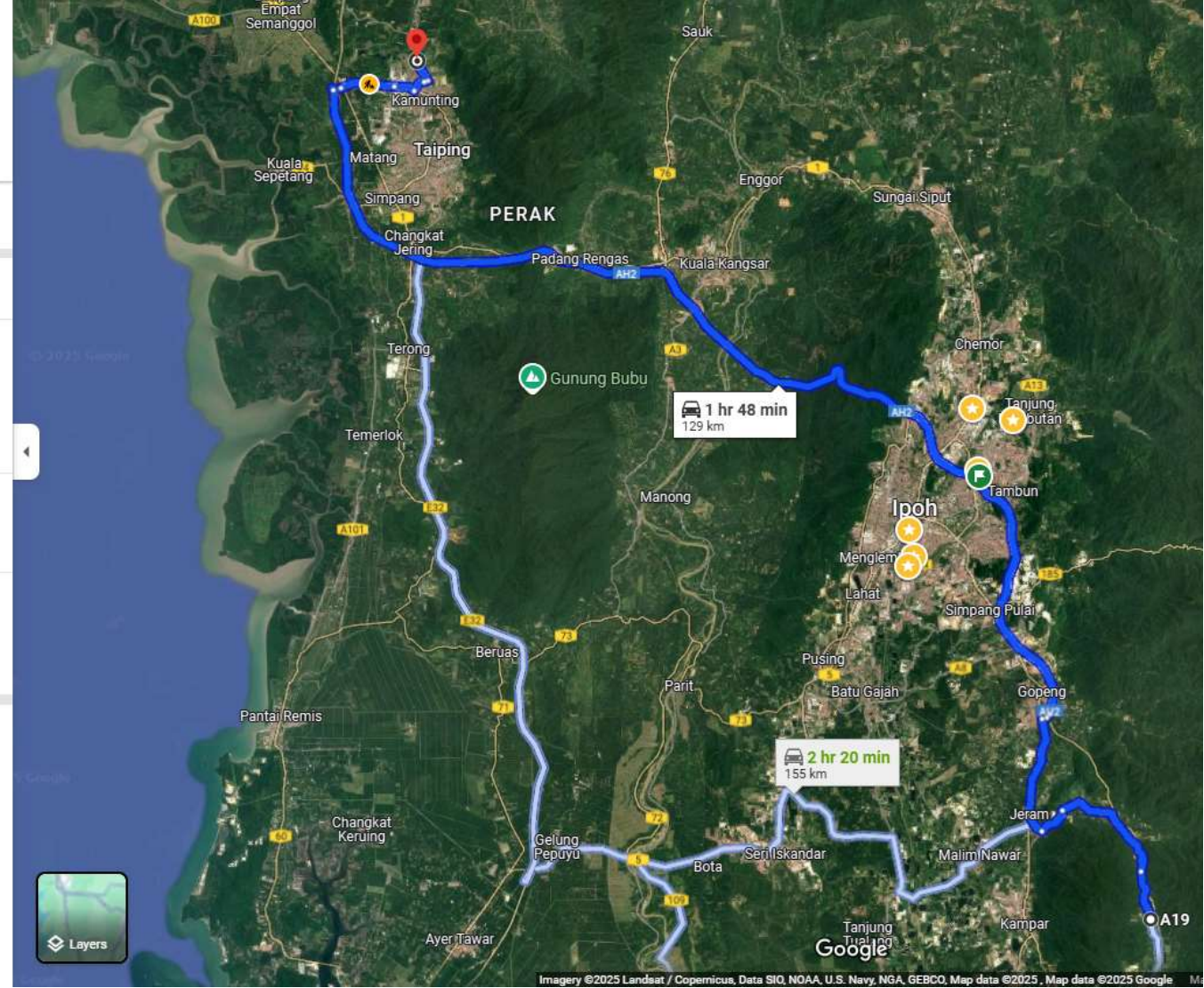
**via Lbh Persisiran Pantai Barat/E32** **2 hr 14 min**  
164 km

**via Ipoh-Lumut Hwy/Route 5 and Lbh Persisiran Pantai Barat/E32** **2 hr 20 min**  
155 km

Explore 4.9146186, 100.7249286

[Restaurants](#) [Hotels](#) [Gas stations](#) [Parking Lots](#) [More](#)

[Layers](#)



## Remark:

1. Transporting Pole Concrete 9.0M to Site from Exchange Kemunting spanning 129km.

MTK COMMUNICATION SDN BHD

ACCESS NETWORK DEVELOPMENT (AND) KAWASAN AND FIBRE

IBUSAWAT: TH

TAJUK PROJEK:  
 MYGOV FTTH TH\_CXXX  
 PUSAT KOREKSIONAL  
 CHENDERIANG  
 (PENJARA KHAS  
 PEMULIHAN DADAH)  
 CHENDERIANG, TAPAH  
 PERAK (TMNA/250244)

DISEDIAKAN OLEH  
  
**NUR FATIMAH HIDAYAT**  
 SITE OFFICER  
 018-2492640  
 T/T



**SEKIAN  
TERIMA KASIH**

