

POP2 D/SIDE ABC6088 SJKC SIU SIN – Technical Proposal

Company Name	:	Infinite Exploration Sdn. Bhd.
Company Address	:	27-2, Jalan Sepah Puteri 5/1B, Seksyen 5, Kota Damansara, 47810 Petaling Jaya, Selangor
Prepared By	:	Muhammad Khairi B. Salihin Ihin
Date	:	22/08/2024



POINT A

POINT B

Starting Point

Site / Boundary Name	:	SJK(C) SIU SIN
Address	:	Jalan Besar, 34800 Trong, Perak
District	:	Trong
Postcode	:	34800
State	:	Perak
GPS Coordinate	:	4.708232, 100.719377
LRD	:	A

End Point

Site / Boundary Name	:	SJK(C) SIU SIN
Address	:	Taman Trong Perdana
District	:	Trong
Postcode	:	34800
State	:	Perak
GPS Coordinate	:	4.705616, 100.714915
LRD	:	B



PROJEK PENYEDIAAN DAN PENYELENGGARAAN POINT OF PRESENCE (POP) FASA 2: HAB INFRASTRUKTUR GENTIAN OPTIK BERHAMPIRAN DENGAN SEKOLAH, KAWASAN PERINDUSTRIAN, PREMIS KERAJAAN DAN KOMUNITI SEKITARNYA OLEH KEMENTERIAN KOMUNIKASI MALAYSIA - ZON UTARA (KKMM.400-11/17/132(1))



1.0 Work Summary

No	Proposed Distance and Method	Unit	Qty
1	Horizontal Directional Drilling (HDD)	m	0
2	Carriage Way Open trench (CW)	m	0
3	Grass Verge Open Trenching (GV)	m	0
4	Micro trenching (MT)	m	0
	Total		0

	Other Information	Unit	Qty
1	Proposed Manhole	EA	0
2	Proposed Pole	EA	53
3	Joint Closure	EA	2
4	Estimated time required for completion	days	40



PROJEK PENYEDIAAN DAN PENYELENGGARAAN POINT OF PRESENCE (POP) FASA 2: HAB INFRASTRUKTUR GENTIAN OPTIK BERHAMPIRAN DENGAN SEKOLAH, KAWASAN PERINDUSTRIAN, PREMIS KERAJAAN DAN KOMUNITI SEKITARNYA OLEH KEMENTERIAN KOMUNIKASI MALAYSIA - ZON UTARA (KKMM.400-11/17/132(1))

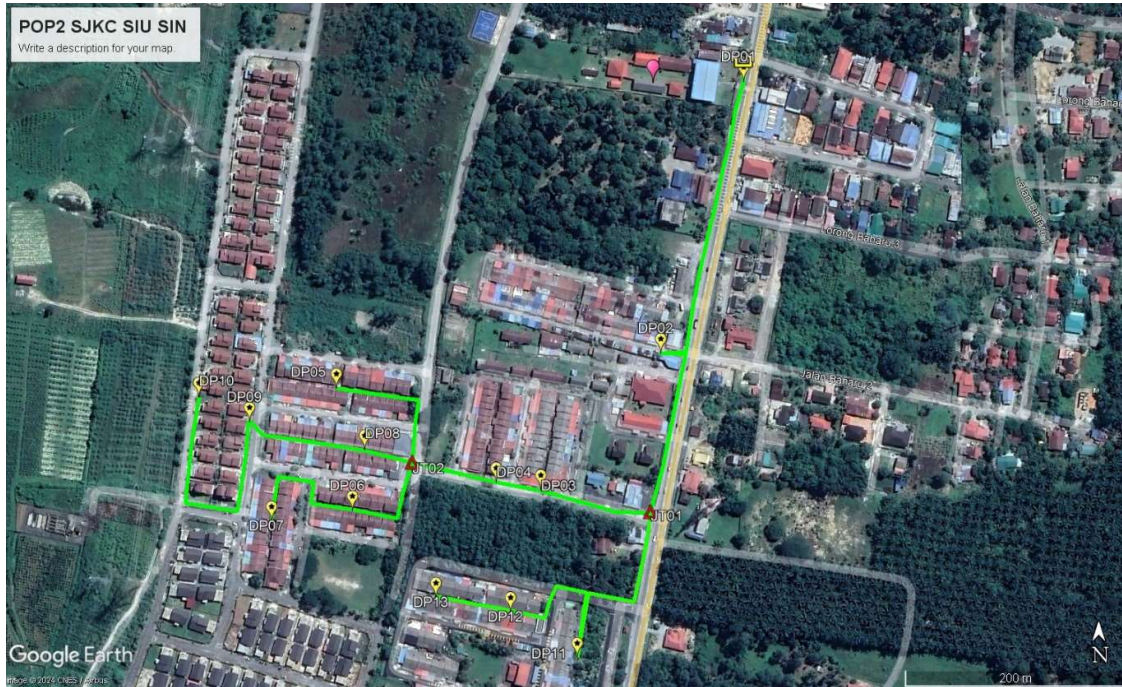


2.0 Local Authority Summary

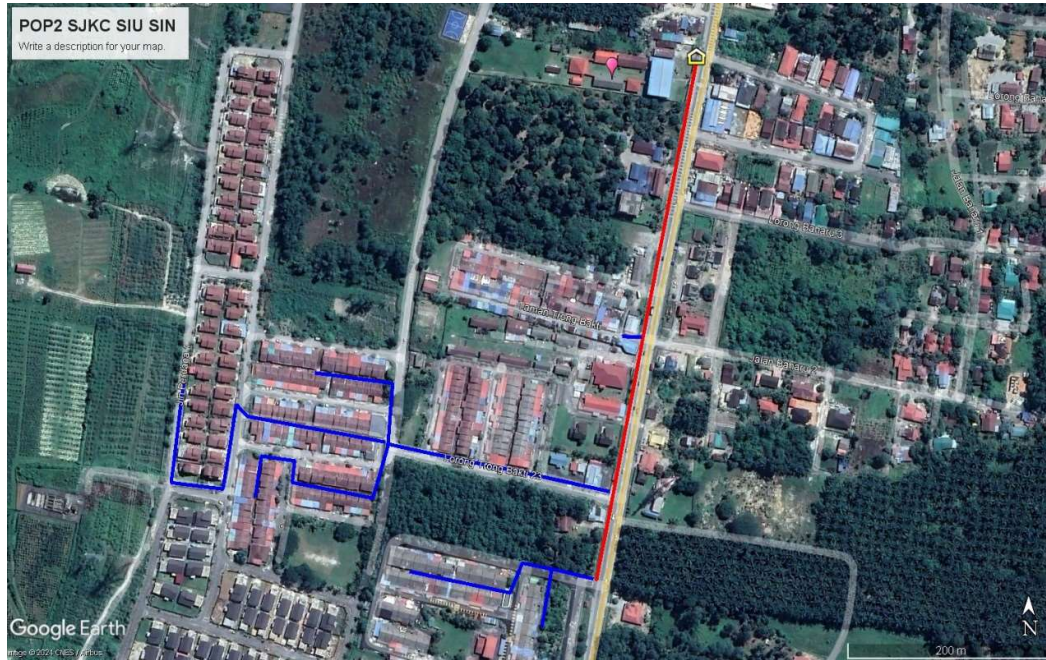
1. Daerah Trong

Bil	Items	Owner	Quantity (ea)	Distance (m)
1	New Pole	JKR	16	480
		Majlis	37	1,110
		Estate / Private Land	-	-
Total				1,590m

3.0 Site Plan – KMZ (Overview site area)



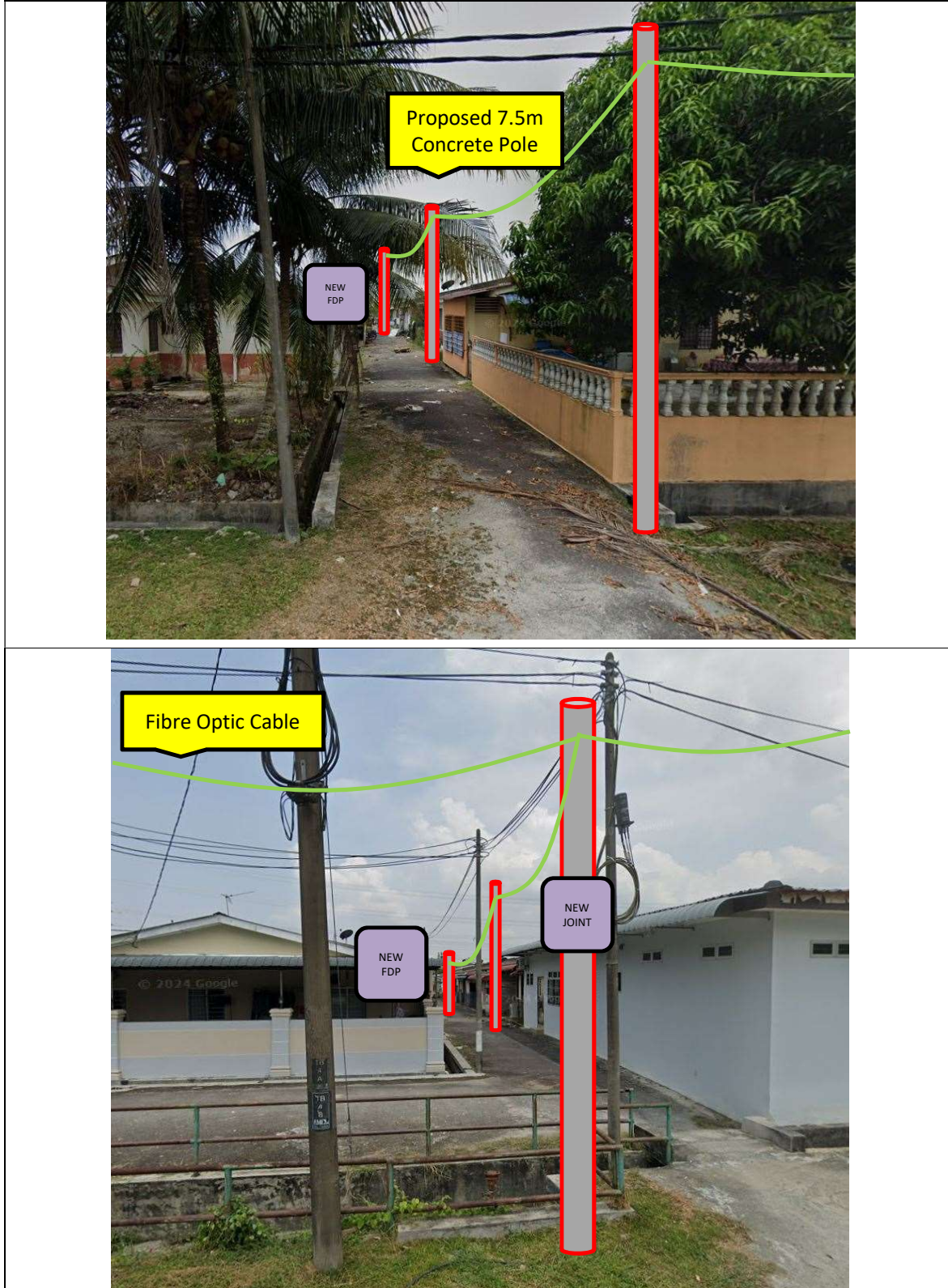
4.0 Site Plan – KMZ Routing (All Local Authority)

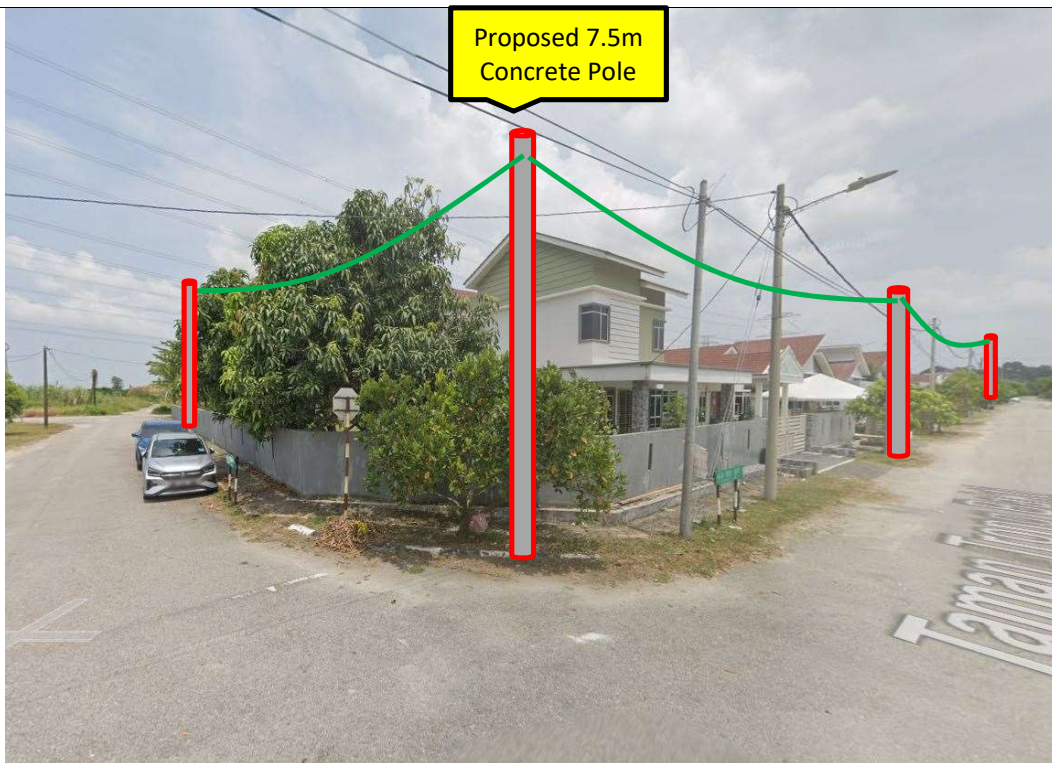


Blue Colour – Majlis Authority

Red Colour – JKR Authority

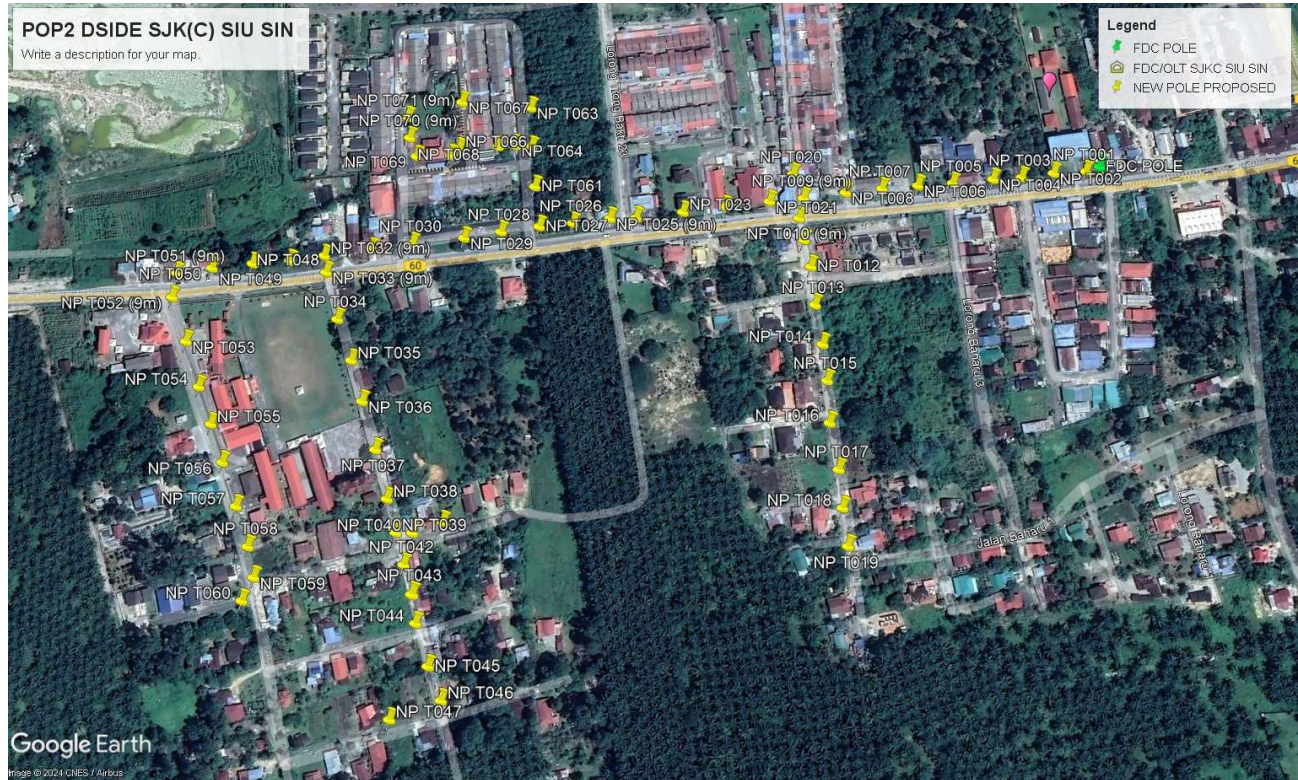
5.0 Site Photo – Proposed New Pole







6.0 Site Plan – KMZ Routing (Prop new Pole)



7.0 Overall New Pole Proposed

Proposed New Pole Coordinate					
No.	Pole ID	Distance (m)	Latitude	Longitude	Local Authority
1	FDC POLE ABC6088	0	4.708314	100.719395	JKR Daerah LMS Taiping
2	ABC6088 T001	13	4.708198	100.7194	JKR Daerah LMS Taiping
3	ABC6088 T002	28	4.707948	100.719334	JKR Daerah LMS Taiping
4	ABC6088 T003	28	4.707695	100.719289	JKR Daerah LMS Taiping
5	ABC6088 T004	25	4.707476	100.719232	JKR Daerah LMS Taiping
6	ABC6088 T005	35	4.70716	100.719165	JKR Daerah LMS Taiping
7	ABC6088 T006	30	4.70689	100.719098	JKR Daerah LMS Taiping
8	ABC6088 T007	32	4.70661	100.719036	JKR Daerah LMS Taiping
9	ABC6088 T008	32	4.706321	100.718981	JKR Daerah LMS Taiping
10	ABC6088 T009	37	4.705986	100.718926	JKR Daerah LMS Taiping
11	ABC6088 T010	23	4.705972	100.718713	JKR Daerah LMS Taiping
12	ABC6088 T011	30	4.705722	100.718872	JKR Daerah LMS Taiping
13	ABC6088 T012	39	4.705373	100.718803	JKR Daerah LMS Taiping
14	ABC6088 T013	36	4.705047	100.718743	JKR Daerah LMS Taiping
15	ABC6088 T014 (9m)	42	4.704677	100.718633	JKR Daerah LMS Taiping
16	ABC6088 T015	31	4.704673	100.718357	Majlis Perbandaran Taiping
17	ABC6088 T016	36	4.704757	100.71804	Majlis Perbandaran Taiping
18	ABC6088 T017	35	4.704842	100.717733	Majlis Perbandaran Taiping
19	ABC6088 T018	41	4.704945	100.717233	Majlis Perbandaran Taiping
20	ABC6088 T019	46	4.705021	100.716859	Majlis Perbandaran Taiping
21	ABC6088 T020	31	4.705079	100.716682	Majlis Perbandaran Taiping
22	ABC6088 T021	20	4.705254114	100.7166969	Majlis Perbandaran Taiping
23	ABC6088 T022	18	4.705420695	100.7167062	Majlis Perbandaran Taiping
24	ABC6088 T023	18	4.705591215	100.7167319	Majlis Perbandaran Taiping
25	ABC6088 T024	35	4.705633232	100.7164238	Majlis Perbandaran Taiping
26	ABC6088 T025	41	4.705690549	100.7160518	Majlis Perbandaran Taiping
27	ABC6088 T026	30	4.704825349	100.7165986	Majlis Perbandaran Taiping
28	ABC6088 T027	23	4.704618878	100.7165558	Majlis Perbandaran Taiping
29	ABC6088 T028	41	4.70469167	100.7161906	Majlis Perbandaran Taiping
30	ABC6088 T029	38	4.704740649	100.7158441	Majlis Perbandaran Taiping
31	ABC6088 T030	20	4.704916559	100.7158652	Majlis Perbandaran Taiping
32	ABC6088 T031	32	4.704957488	100.7155709	Majlis Perbandaran Taiping
33	ABC6088 T032	40	4.704601891	100.7155175	Majlis Perbandaran Taiping
34	ABC6088 T033	45	4.705179624	100.7162837	Majlis Perbandaran Taiping
35	ABC6088 T034	47	4.705239799	100.7158596	Majlis Perbandaran Taiping
36	ABC6088 T035	47	4.705295625	100.7154385	Majlis Perbandaran Taiping
37	ABC6088 T036	18	4.705420201	100.715327	Majlis Perbandaran Taiping
38	ABC6088 T037	33	4.705116156	100.7153003	Majlis Perbandaran Taiping
39	ABC6088 T038	49	4.704676538	100.7152327	Majlis Perbandaran Taiping
40	ABC6088 T039	48	4.704741287	100.7147994	Majlis Perbandaran Taiping
41	ABC6088 T040	49	4.705188383	100.7148476	Majlis Perbandaran Taiping
42	ABC6088 T041	47	4.705608512	100.7149124	Majlis Perbandaran Taiping
43	ABC6088 T042 (9m)	21	4.704484749	100.718615	JKR Daerah LMS Taiping



PROJEK PENYEDIAAN DAN PENYELENGGARAAN POINT OF PRESENCE (POP) FASA 2: HAB INFRASTRUKTUR GENTIAN OPTIK BERHAMPIRAN DENGAN SEKOLAH, KAWASAN PERINDUSTRIAN, PREMIS KERAJAAN DAN KOMUNITI SEKITARNYA OLEH KEMENTERIAN KOMUNIKASI MALAYSIA - ZON UTARA (KKMM.400-11/17/132(1))



No.	Pole ID	Distance (m)	Latitude	Longitude	Local Authority
44	ABC6088 T043	32	4.704193448	100.718558	JKR Daerah LMS Taiping
45	ABC6088 T044	29	4.703935	100.7185009	JKR Daerah LMS Taiping
46	ABC6088 T045	42	4.704011838	100.7181304	Majlis Perbandaran Taiping
47	ABC6088 T046	18	4.703854855	100.7180984	Majlis Perbandaran Taiping
48	ABC6088 T047	40	4.703488866	100.7180319	Majlis Perbandaran Taiping
49	ABC6088 T048	30	4.704073165	100.7178664	Majlis Perbandaran Taiping
50	ABC6088 T049	15	4.703949014	100.7178051	Majlis Perbandaran Taiping
51	ABC6088 T050	16	4.703807156	100.7177669	Majlis Perbandaran Taiping
52	ABC6088 T051	31	4.70386339	100.7174911	Majlis Perbandaran Taiping
53	ABC6088 T052	38	4.703930021	100.7171472	Majlis Perbandaran Taiping
54	ABC6088 T053	30	4.703986628	100.7168754	Majlis Perbandaran Taiping