



KL CEMERLANG SDN BHD
(1264942-A)

*Civil & Structure Engineering
*HDPE Pipe Engineering
*Electrical Engineering



016-920 2698

017-301 2988

klcemerlang99@gmail.com

NO.22A-1, JALAN SUNGAI RASAU E 32/E, BERJAYA PARK,
SEKSYEN 32, 40460 SHAH ALAM, SELANGOR.

Rujukan Kami : KLC/KUDR/ ED/085/091/2024/CHC

Rujukan Tuan :

Tarikh : 13/01/2026

KORIDOR UTILITI DARUL RIDZUAN (KUDR)

BG-9 & BG-11, Greentown Suria

Jalan Dato' Seri Ahmad Said

30450 Ipoh, Perak

(u.p. Pengurus Koridor Negeri)

Tuan/Puan,

PER: SERAHAN DOKUMEN LENGKAP BAGI PERMOHONAN KELULUSAN IZIN LALU

Dengan hormatnya perkara di atas dirujuk.

2. Bersama surat ini, disertakan dokumen-dokumen / lampiran berikut untuk rujukan dan semakan pihak Tuan/Puan:
 - i. Lukisan Tapak (Pelan Skematik)
 - ii. Peta Penandaan Lokasi
 - iii. Gambar Lokasi
3. Adalah dipohon jasa baik pihak Tuan/puan membantu mengaturkan satu tarikh bagi lawatan tapak untuk menentu serta meluluskan cadangan laluan yang dinyatakan.
4. Sebarang pertanyaan berhubung perkara ini, pihak Tuan/Puan boleh menghubungi pegawai kami iaitu:

Nama Pegawai : Ng Kar Leong

No. Telefon (Bimbit) : 016-9202698

Emel : klcemerlang99@gmail.com

5. Perhatian dan kerjasama daripada pihak Tuan/Puan mengenai perkara ini amat dihargai dan didahului dengan ucapan terima kasih.

Sekian.

Yang benar,

NG KAR LEONG
KL CEMERLANG SDN BHD
PENGARAH



KL CEMERLANG SDN BHD
(1264942-A)

*Civil & Structure Engineering
*HDPE Pipe Engineering
*Electrical Engineering



016-920 2698

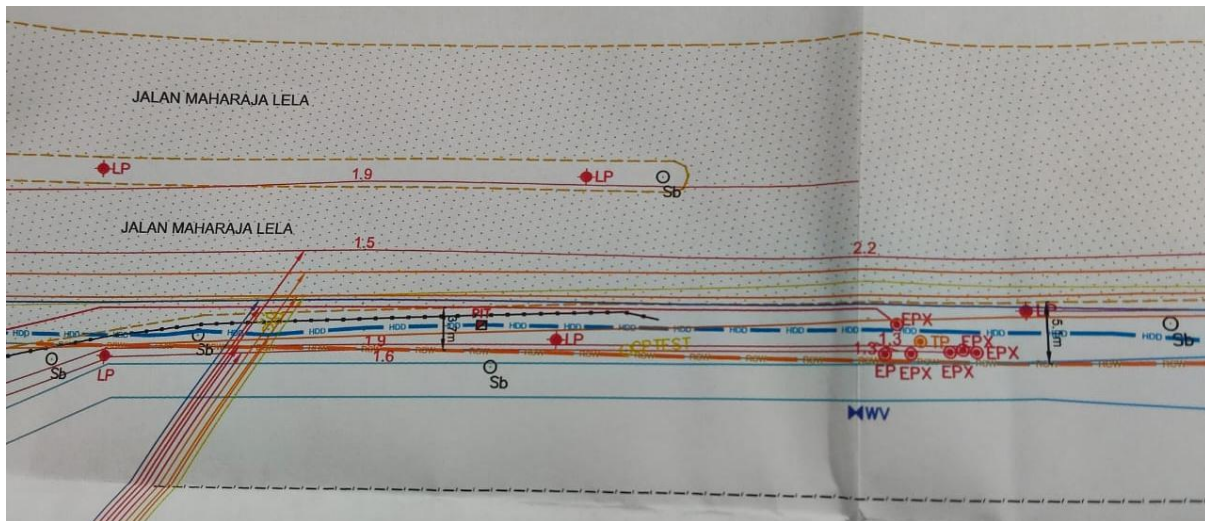
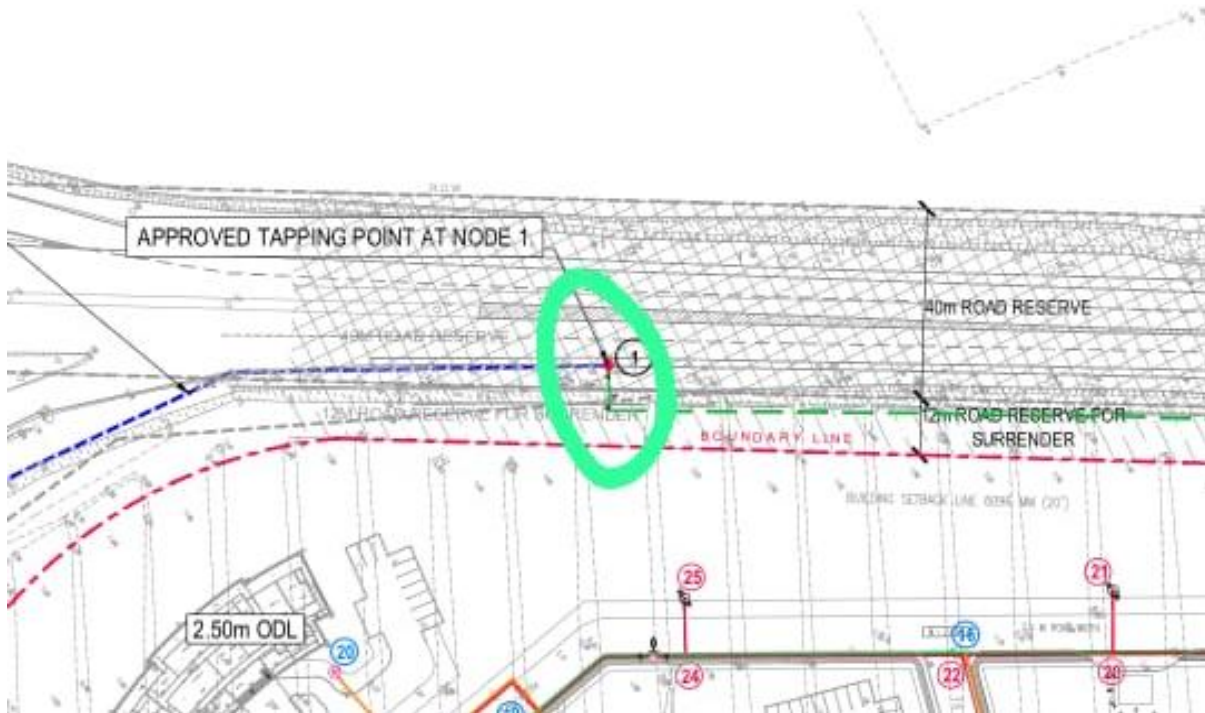
017-301 2988

klcemerlang99@gmail.com

NO.22A-1, JALAN SUNGAI RASAU E 32/E, BERJAYA PARK,
SEKSYEN 32, 40460 SHAH ALAM, SELANGOR.

LAMPIRAN

1. Lukisan Tapak (Pelan Skematik)






KL CEMERLANG SDN BHD
(1264942-A)

*Civil & Structure Engineering
*HDPE Pipe Engineering
*Electrical Engineering



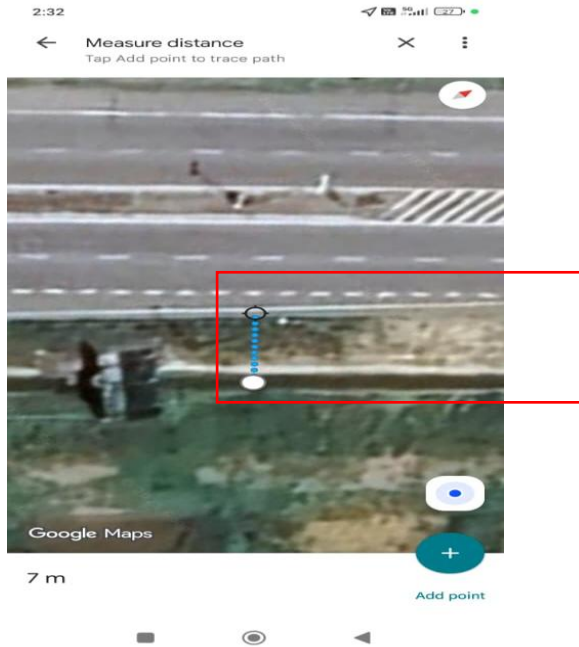
016-920 2698 

017-301 2988 

klcemerlang99@gmail.com 

NO.22A-1, JALAN SUNGAI RASAU E 32/E, BERJAYA PARK,
SEKSYEN 32, 40460 SHAH ALAM, SELANGOR. 

2. Peta Penandaan Lokasi



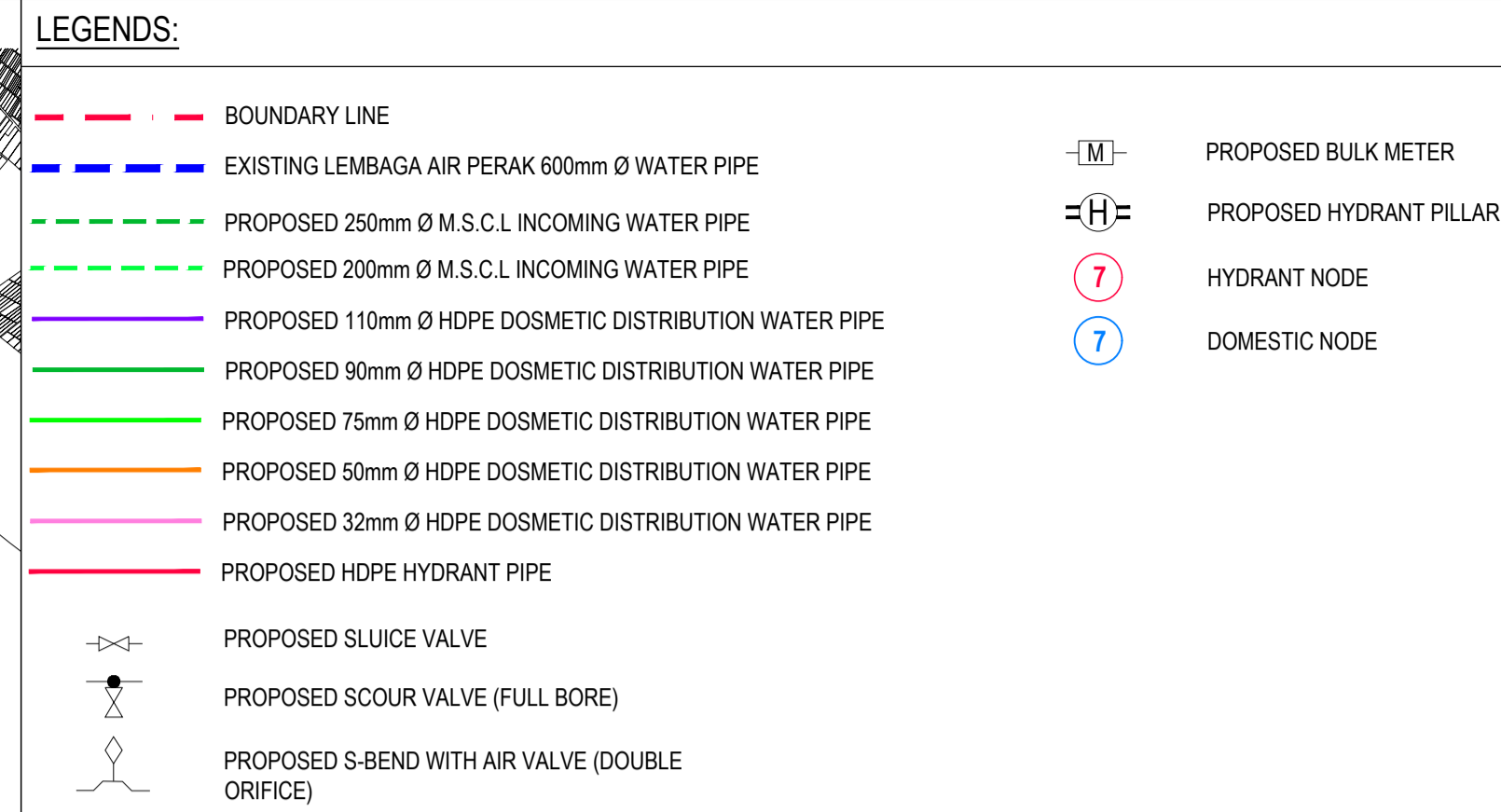
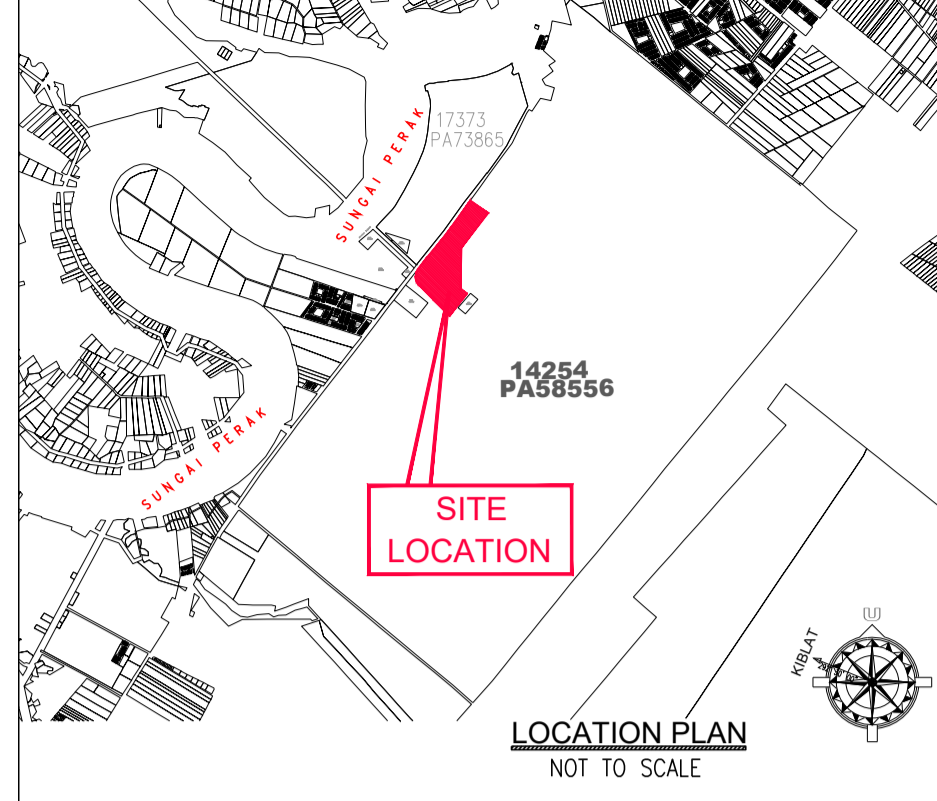
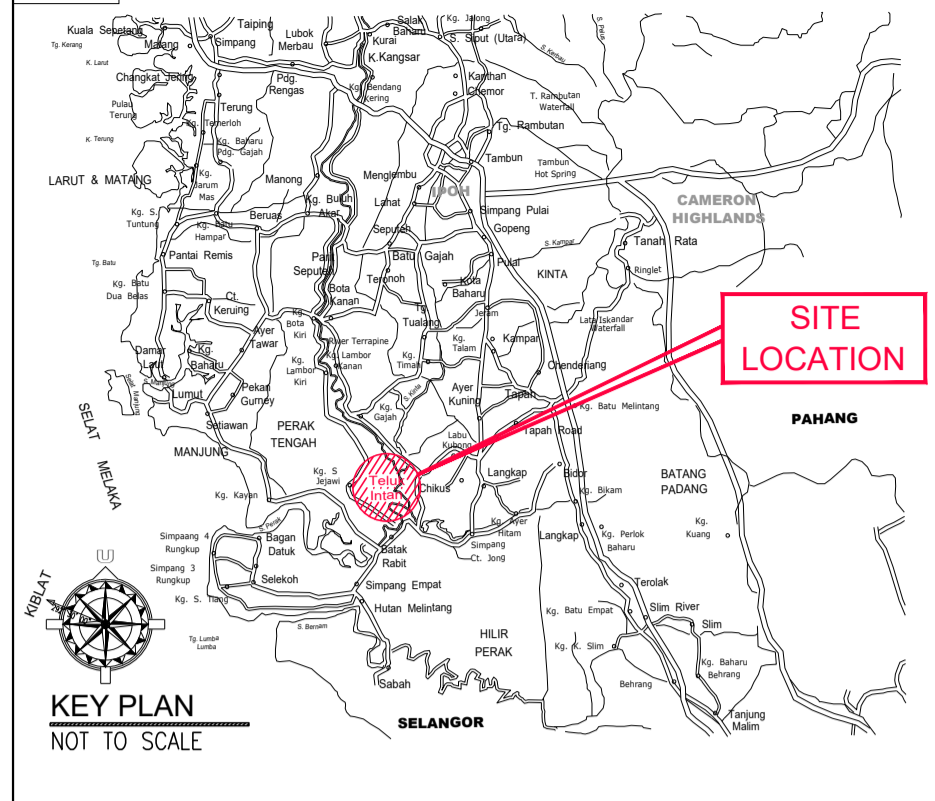
Lokasi : Jalan persekutuan. Ft58 Jalan Bidor-Teluk intan

3. Gambar Lokasi

Lawatan tapak bersama Puan Aina , Jurutera Jalan, Bahagian Jalan pada Tarikh 7hb Januari 2026.

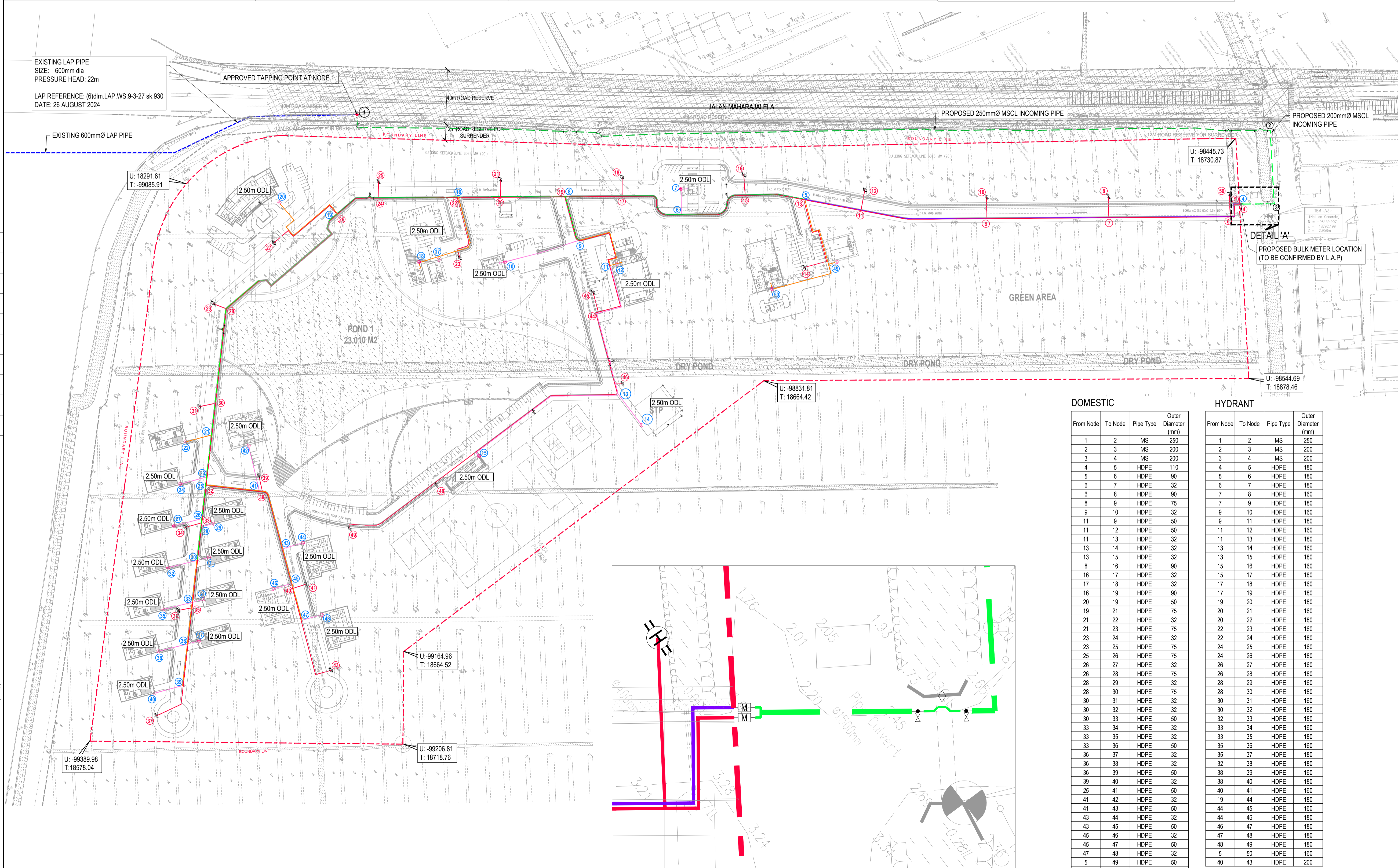


A1



WATER DEMAND TABLE

No.	Type of Premises	Units	Area	Water Demand Factor	Water Demand
RESIDENTIAL AREA					
1	Bungalow Type 1 (BGM)	1	340 m ²	2000/unit	2,000
2	Bungalow Type 2 (BM)	2	298 m ²	2000/unit	4,000
3	Bungalow Type 3 (BE)	11	209 m ²	2000/unit	22,000
4	Bungalow Type 4 (BG)	1	312 m ²	2000/unit	2,000
OFFICE AND ADMINISTRATION BUILDINGS					
1	Main Office	1	594 m ²	1000/100m ²	5,940
2	Surau	1	588 m ²	50/person (200person)	10,000
3	Community Hall	1	620 m ²	1000/100m ²	6,200
4	Sundry/Shop Lot	4	150 m ²	2000/unit (4 units)	8,000
5	Nursery (NEST)	1	121 m ²	50/student (10 students)	2,000
6	Kindergarten	1	114 m ²	50/student (40 students)	500
7	Dispensary	1	131 m ²	1500/bed (2beds)	3,000
9	Guardhouse A	1	39 m ²	1000/100m ²	390
11	Grandstand	1	323 m ²	1000/100m ²	3,230
TOTAL WATER DEMAND (LPD)					69,260
TOTAL WATER DEMAND FOR TWO (2) DAYS OF STORAGE					138,520

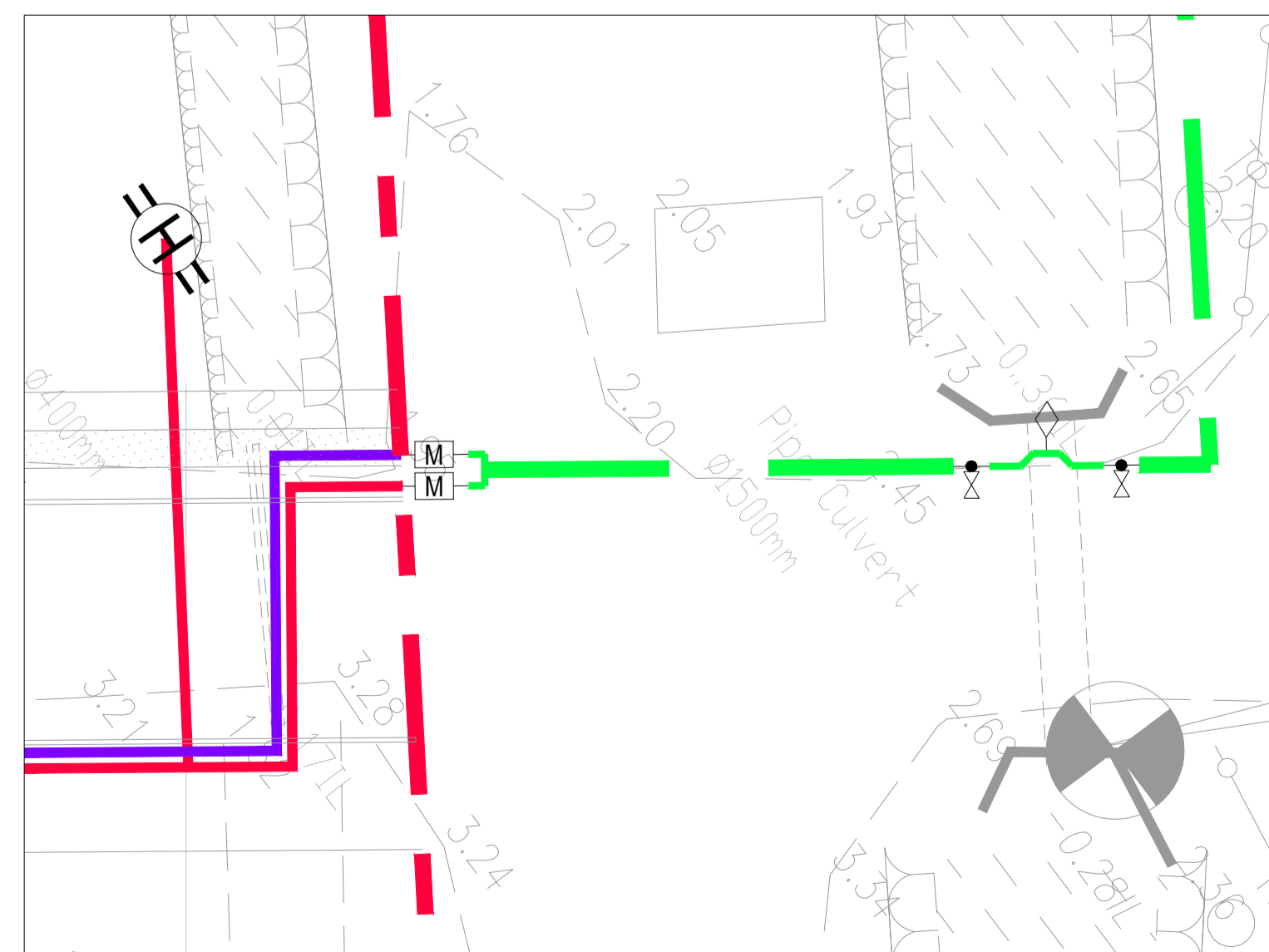


DOMESTIC

From Node	To Node	Pipe Type	Outer Diameter (mm)
1	2	MS	250
2	3	MS	200
3	4	MS	200
4	5	HDPE	110
5	6	HDPE	90
6	7	HDPE	90
6	8	HDPE	90
8	9	HDPE	75
9	10	HDPE	32
11	9	HDPE	50
11	12	HDPE	50
11	13	HDPE	32
13	14	HDPE	32
13	15	HDPE	32
8	16	HDPE	90
16	17	HDPE	32
17	18	HDPE	32
16	19	HDPE	90
20	19	HDPE	50
19	21	HDPE	75
21	22	HDPE	32
21	23	HDPE	75
23	24	HDPE	32
23	25	HDPE	75
25	26	HDPE	75
26	27	HDPE	32
26	28	HDPE	75
28	29	HDPE	32
28	30	HDPE	75
30	31	HDPE	32
30	32	HDPE	32
30	33	HDPE	50
33	34	HDPE	32
33	35	HDPE	32
33	36	HDPE	50
36	37	HDPE	32
36	38	HDPE	32
36	39	HDPE	50
39	40	HDPE	32
25	41	HDPE	50
41	42	HDPE	32
41	43	HDPE	50
43	44	HDPE	32
43	45	HDPE	50
45	46	HDPE	32
45	47	HDPE	50
47	48	HDPE	32
5	49	HDPE	50
49	50	HDPE	50

HYDRANT

From Node	To Node	Pipe Type	Outer Diameter (mm)
1	2	MS	250
2	3	MS	200
3	4	MS	200
4	5	HDPE	180
5	6	HDPE	180
6	7	HDPE	180
6	8	HDPE	160
7	9	HDPE	180
9	10	HDPE	160
9	11	HDPE	180
11	12	HDPE	160
11	13	HDPE	180
13	14	HDPE	160
13	15	HDPE	180
15	16	HDPE	160
15	17	HDPE	180
17	18	HDPE	160
17	19	HDPE	180
19	20	HDPE	180
20	21	HDPE	160
20	22	HDPE	180
22	23	HDPE	160
22	24	HDPE	180
24	25	HDPE	160
24	26	HDPE	180
26	27	HDPE	160
26	28	HDPE	180
28	29	HDPE	160
28	30	HDPE	180
30	31	HDPE	160
30	32	HDPE	180
32	33	HDPE	180
33	34	HDPE	160
33	35	HDPE	160
35	36	HDPE	180
35	37	HDPE	180
32	38	HDPE	180
38	39	HDPE	160
38	40	HDPE	180
40	41	HDPE	160
19	44	HDPE	180
44	45	HDPE	160
44	46	HDPE	180
46	47	HDPE	180
47	48	HDPE	180
48	49	HDPE	160
5	50	HDPE	160
40	43	HDPE	200



TENDER ADDENDUM

Owner / Client

SD GUTHRIE BERHAD 200401009263
 COMPANY NO : 647766-V
 ENGINEERING & MILL SERVICES
 Centre Of Sustainability (COS)
 42960 Pulau Carey,
 Selangor Darul Ehsan, Malaysia.
 Tel : (03) 7848 4300
 Fax : (03) 5631 5657

Architect

dba
DBA AKITEK (M) SDN BHD
 COMPANY NO : 453724 - V
 58A KOMPLEKS DAMAI, JALAN LUMUT,
 50400 KUALA LUMPUR
 TELEFON : 03 - 4042 6011
 Email : dba@dbaakitek.com

Engineer's Signature

ARUP
 ARUP JURURUNDRING SDN. BHD. (97905-U)
 LEVEL 26, 1 POWERHOUSE,
 NO. 1 PERSARAN BANDAR UTAMA,
 BANDAR UTAMA, 47800
 PETALING JAYA, SELANGOR.
 TEL : 03-77352223
 FAX : 03-77352227

Tanda-tangan / Cop :

Project Title

CONSTRUCTION AND COMPLETION OF DRAINAGE WORK AND WATER RETICULATION SERVICES (PACKAGE 5A) FOR NEW CHC DEVELOPMENT AT SERI INTAN ESTATE, TELUK INTAN, PERAK.

WATER SUPPLY LAYOUT PLAN WITH BULK METER

ARUP Arup Jururunding Sdn Bhd

Drawing Status

CONSTRUCTION DRAWING

Scales 1 : 1500 Originator M/M/FAM

Checked AJ Approved NSG Date OCT 2023

Job No. 287840-00 Drawing No. CIVWS/LP/01 Rev. CD00

Plotted by : Hamif Khornis
Last Modified : 19/10/2025 2:51:59 PM