

Ruj. Kami : POP2-KACP-PRK(KUDR)-LET-00010

Tarikh : 15 Ogos 2024

**Tuan Pengurus Besar,  
Koridor Utiliti Darul Ridzuan,  
B-G-11, Greentown Suria,  
Jalan Dato Seri Ahmad Said,  
Kampung Kastam Greentown,  
30450, Ipoh,  
Perak Darul Ridzuan**

Tuan,

**PROJEK PENYEDIAAN POINT OF PRESENCE (POP) FASA 2 HAB INFRASTRUKTUR GENTIAN OPTIK BERHAMPIRAN DENGAN SEKOLAH, PREMIS KERAJAAN DAN KOMUNITI SEKITARNYA OLEH KEMENTERIAN KOMUNIKASI (ZON UTARA – PERAK & KEDAH)**

**SERAHAN DOKUMEN LENGKAP BAGI PERMOHONAN KELULUSAN IZIN LALU ABC1066- SEKOLAH JENIS KEBANGSAAN (CINA) KHUEN HEAN, PANTAI REMIS, PERAK**

Merujuk perkara di atas, dimaklumkan bahawa pihak kami bercadang untuk menjalankan kerja-kerja pemasangan utiliti telekomunikasi di dalam kawasan pengawasan pihak tuan. Berikut adalah senarai maklumat cadangan yang diperlukan:-

Bil	Cadangan kaedah pemasangan	Pemilik	Jarak	Kuantiti	Jumlah
1	HDD/Opencut	JKR			
		Majlis			
		Persendirian			
2	Tiang Baru	JKR			
		Majlis	4200 m	119	119
		Persendirian			
3	Tiang Sediaada	JKR			
		Majlis			
		Persendirian			
<b>JUMLAH</b>				119	

2. Bersama-sama ini disertakan dokumen permohonan untuk rujukan dan tindakan selanjutnya daripada pihak tuan.
3. Sekiranya terdapat sebarang pertanyaan, pihak tuan boleh berhubung dengan wakil syarikat seperti berikut:
  - i. En. Syakir Arham - (010-4207159)
  - ii. En. Nurulhafiz - (012-5201272)
  - iii. Pn. Mazni Binti Omar - (012-3658494)

Segala pertimbangan dan kerjasama pihak tuan amat dihargai dan didahului dengan ucapan ribuan terima kasih.

Sekian.

Yang benar,  
Bagi pihak  
**KONSORTIUM APEX COMMUNICATIONS SDN BHD -  
PRIVASAT SDN BHD (KACP)**

**MOHD HAFEEZ BIN MOHD THANI**  
Pengarah Projek

## POP2 D/SIDE POI BSBU – Technical Proposal

Company Name	:	<b>Wira Muhibbah Sdn Bhd</b>
Company Address	:	<b>31-1 Jalan 3/76D Desa Pandan 55100 Kuala Lumpur Federal Territory of Kuala Lumpur</b>
Prepared By	:	<b>Nur Syahidah Izzatie</b>
Date	:	<b>08/08/2024</b>



**POINT A**

**POINT B**

### Starting Point

Site / Boundary Name	:	<b>SJK (C) KHUEN HEAN</b>
Address	:	<b>236 Jalan Changkat Kruing,</b>
District	:	<b>Pengkalan Baharu</b>
Postcode	:	<b>32500</b>
State	:	<b>Perak</b>
GPS Coordinate	:	<b>4.379554, 100.688532</b>
LRD	:	<b>A</b>

### End Point

Site / Boundary Name	:	<b>SJK (C) KHUEN HEAN</b>
Address	:	<b>1 Hala Intan 2</b>
District	:	<b>Pengkalan Baharu</b>
Postcode	:	<b>32500</b>
State	:	<b>Perak</b>
GPS Coordinate	:	<b>4.375537, 100.684167</b>
LRD	:	<b>B</b>

### Work Summary

No	Proposed Distance and Method	Unit	Qty
1	Horizontal Directional Drilling (HDD)	m	0
2	Carriage Way Open trench (CW)	m	0
3	Grass Verge Open Trenching (GV)	m	0
4	Micro trenching (MT)	m	0
	Total		0

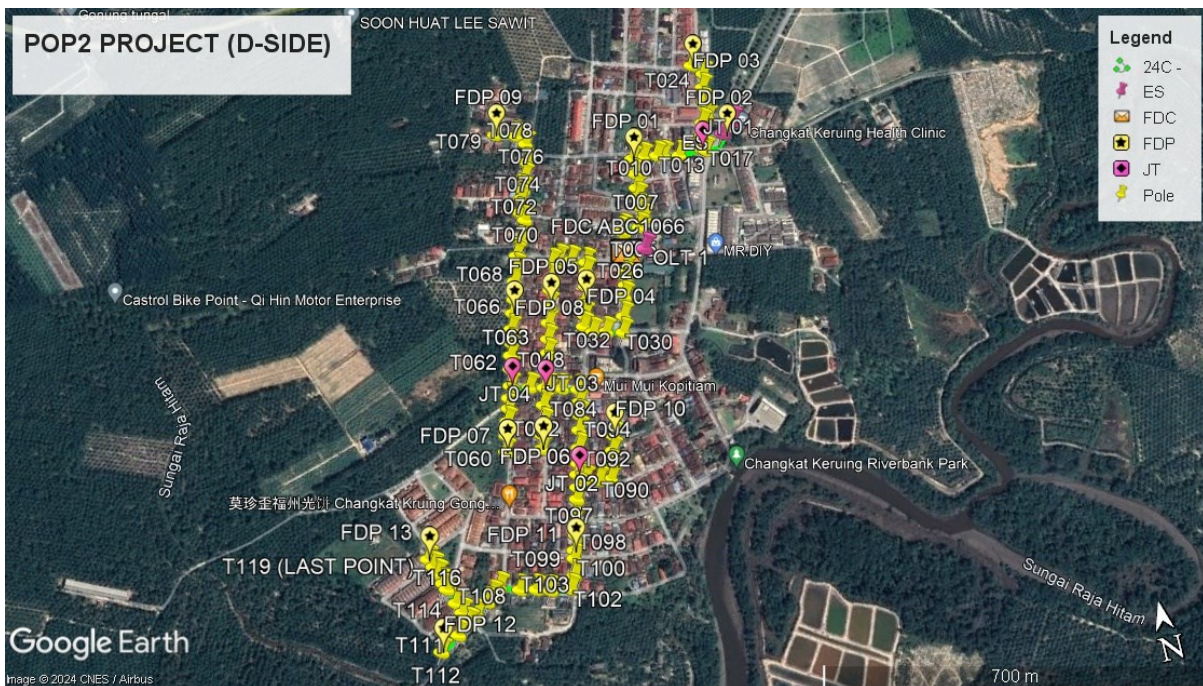
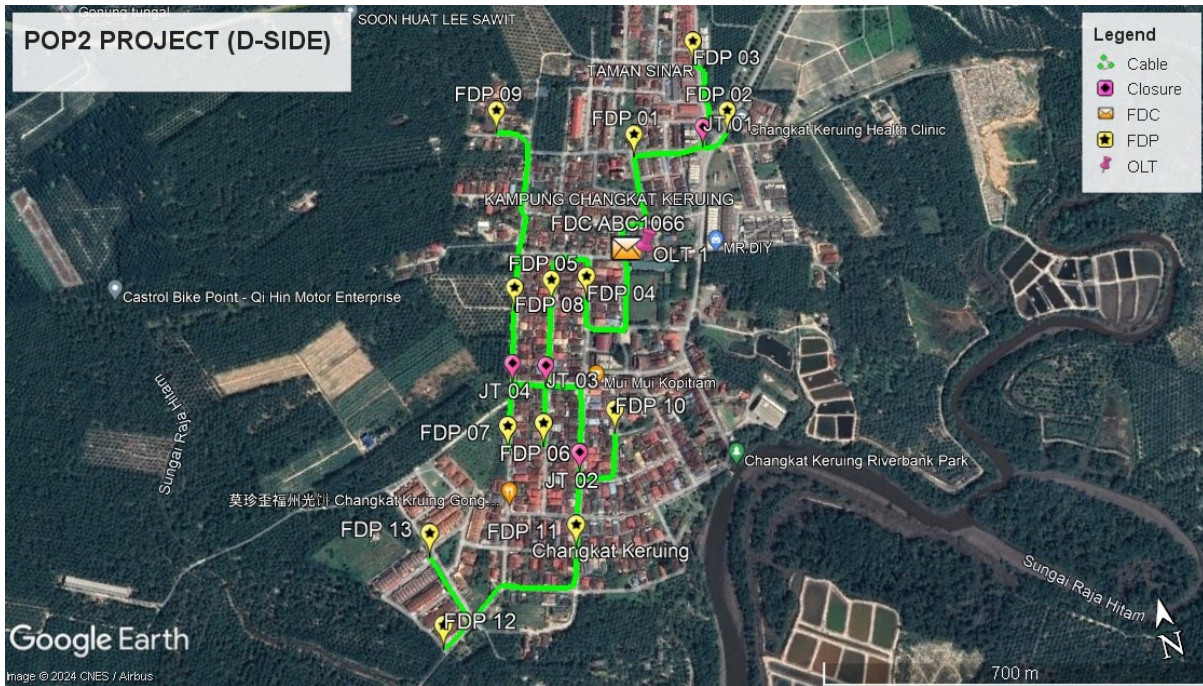
	Other Information	Unit	Qty
1	Proposed Manhole	EA	0
2	Proposed Pole	EA	119
3	Joint Closure	EA	4
4	Estimated time required for completion	days	

### Local Authority Summary

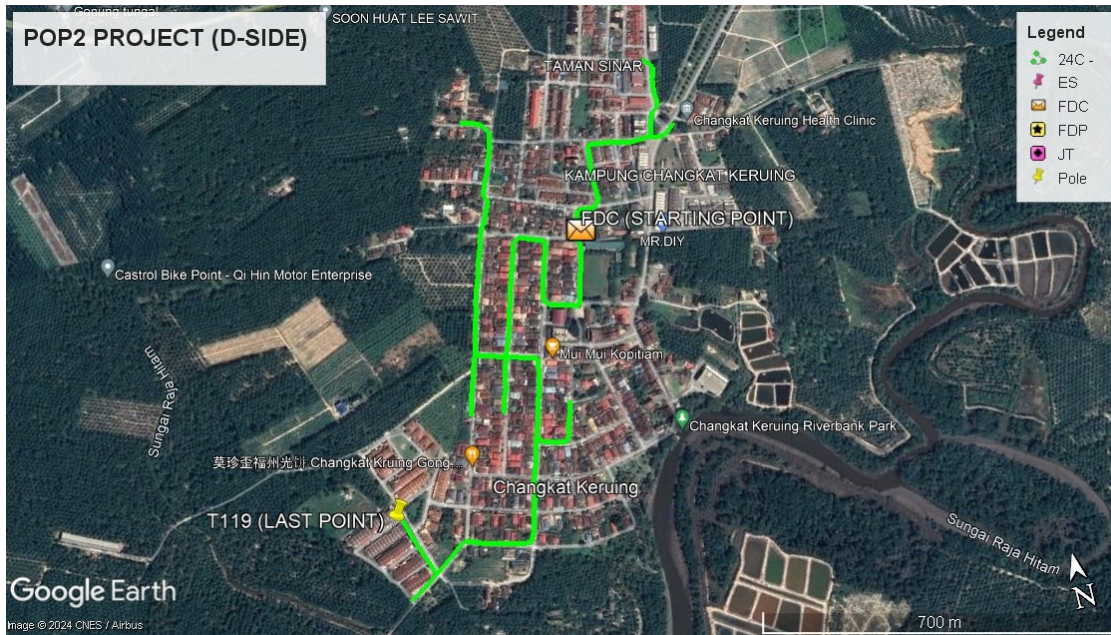
#### 1. Daerah Manjung

Bil	Items	Owner	Quantity	Distance
1	HDD	JKR	-	-
		Majlis	-	-
		Estate / Private Land	-	-
2	New Pole	JKR	-	-
		Majlis	119pc	4200m
		Estate / Private Land	-	-
3	Existing TNB Pole	JKR	-	-
		Majlis	-	-
		Estate / Private Land	-	-
Total				4200m

Site Plan – KMZ (Overview site area)



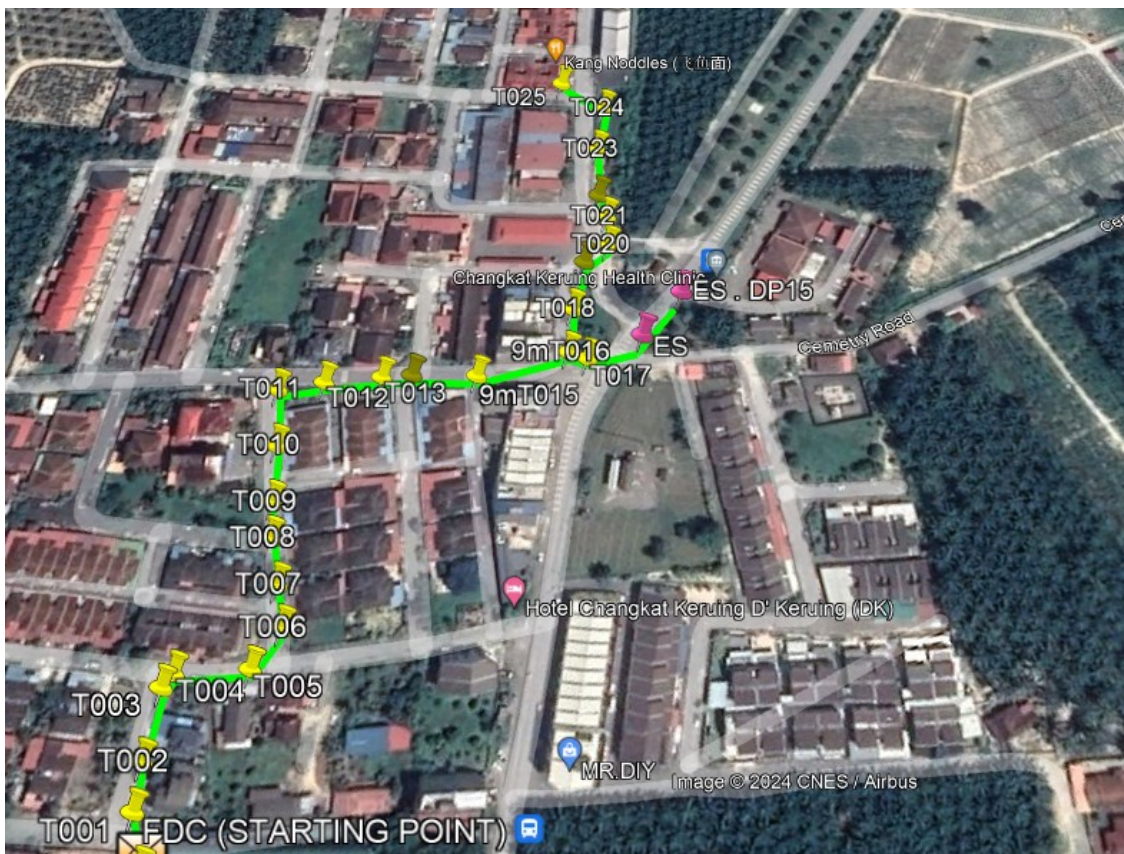
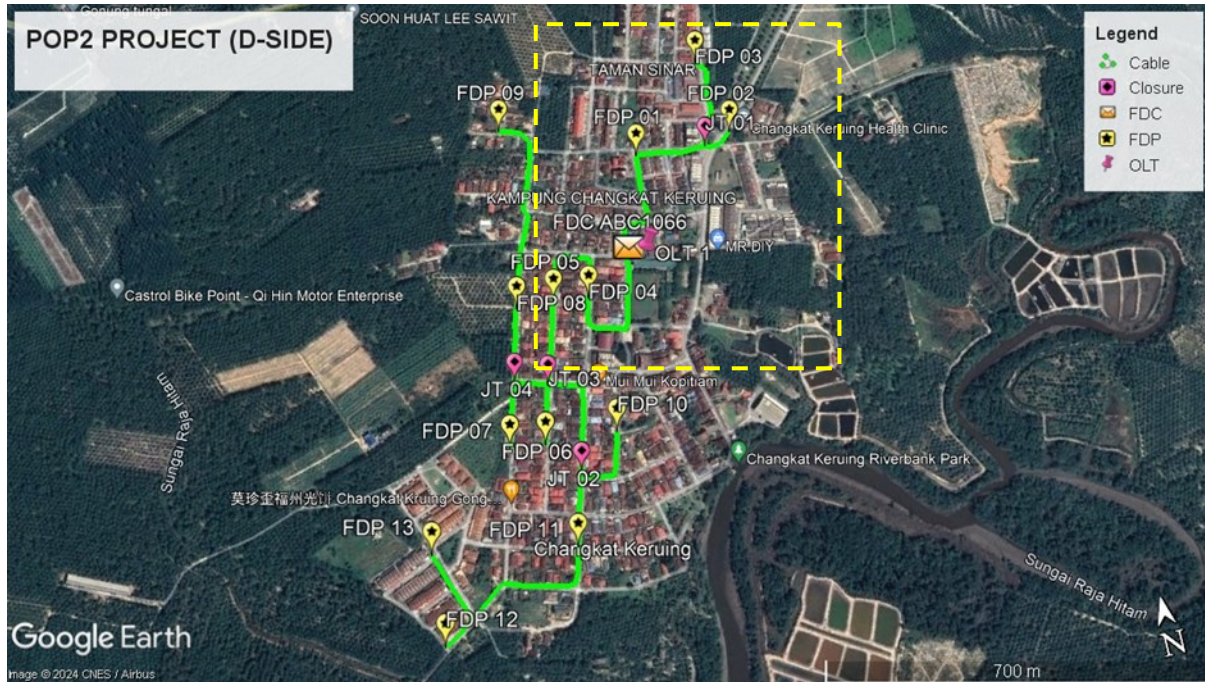
**Site Plan – KMZ Routing (All Local Authority)**

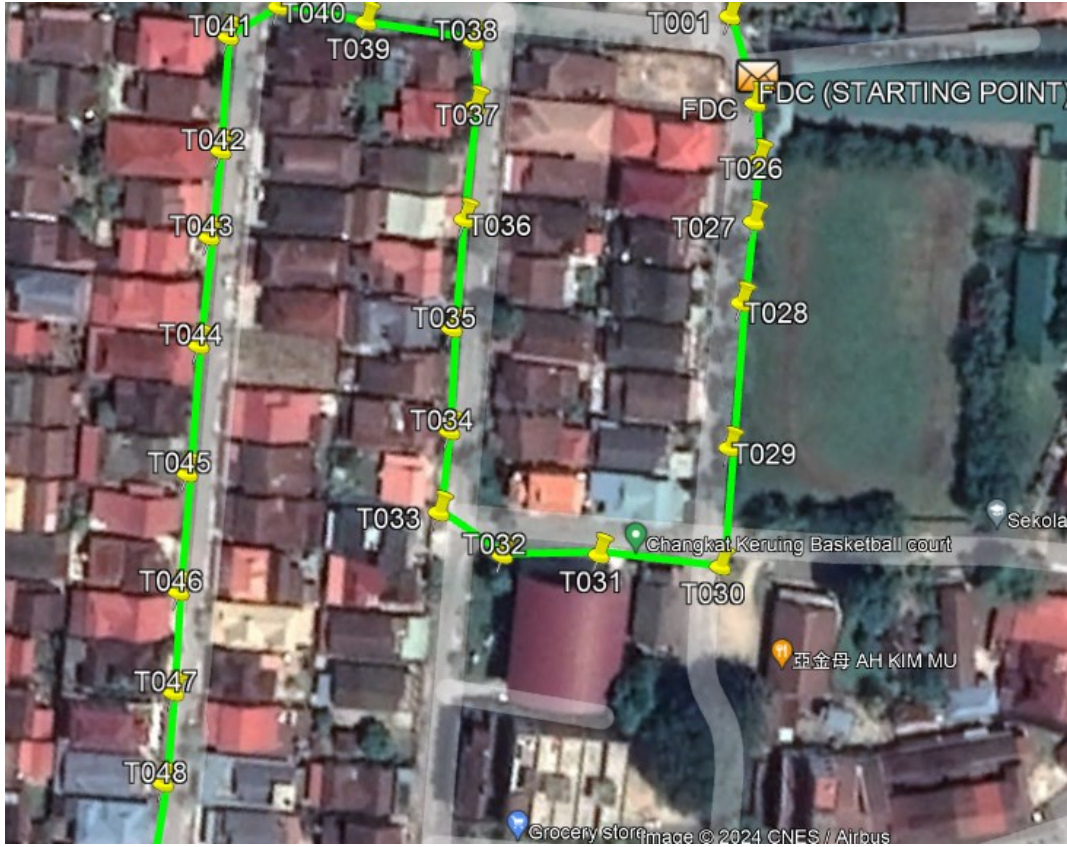


**Green Colour – Majlis Pebandaran Manjung**

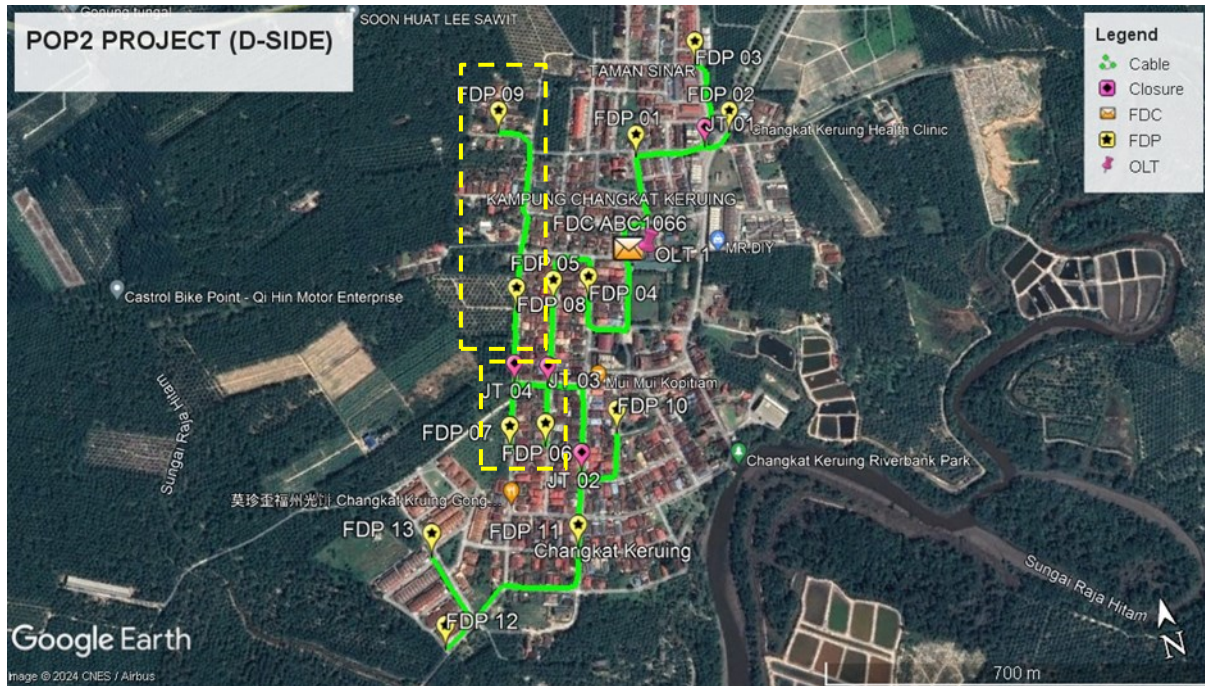
**Site Plan – KMZ Routing (All site area)**

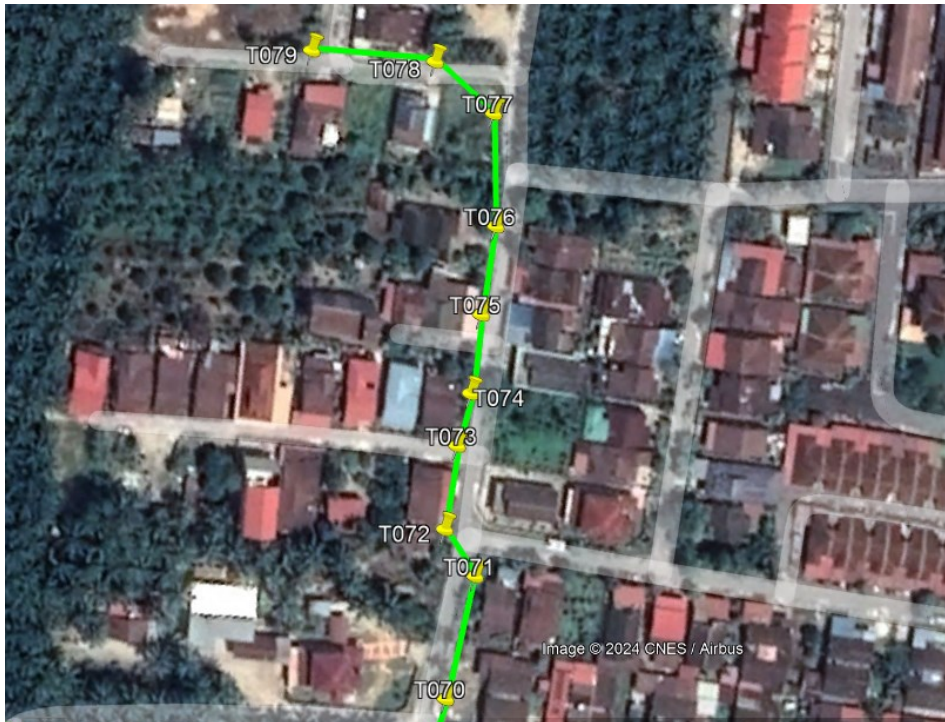
**Route 1**



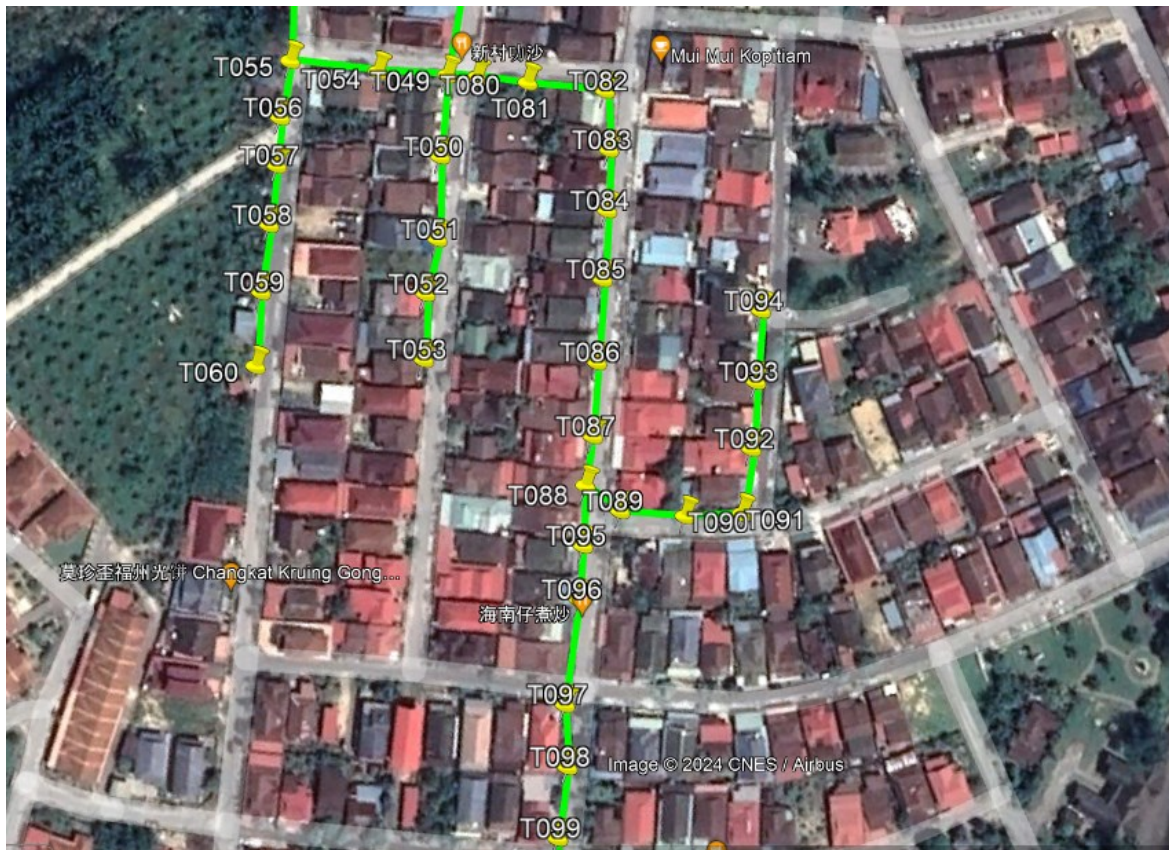
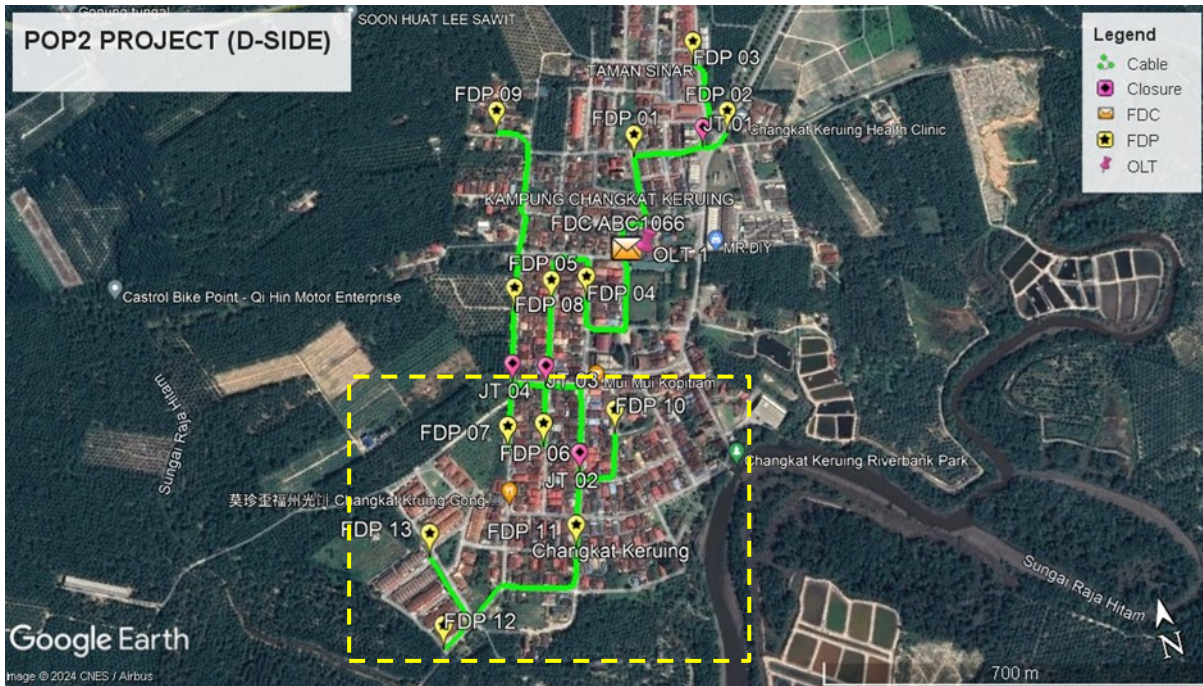


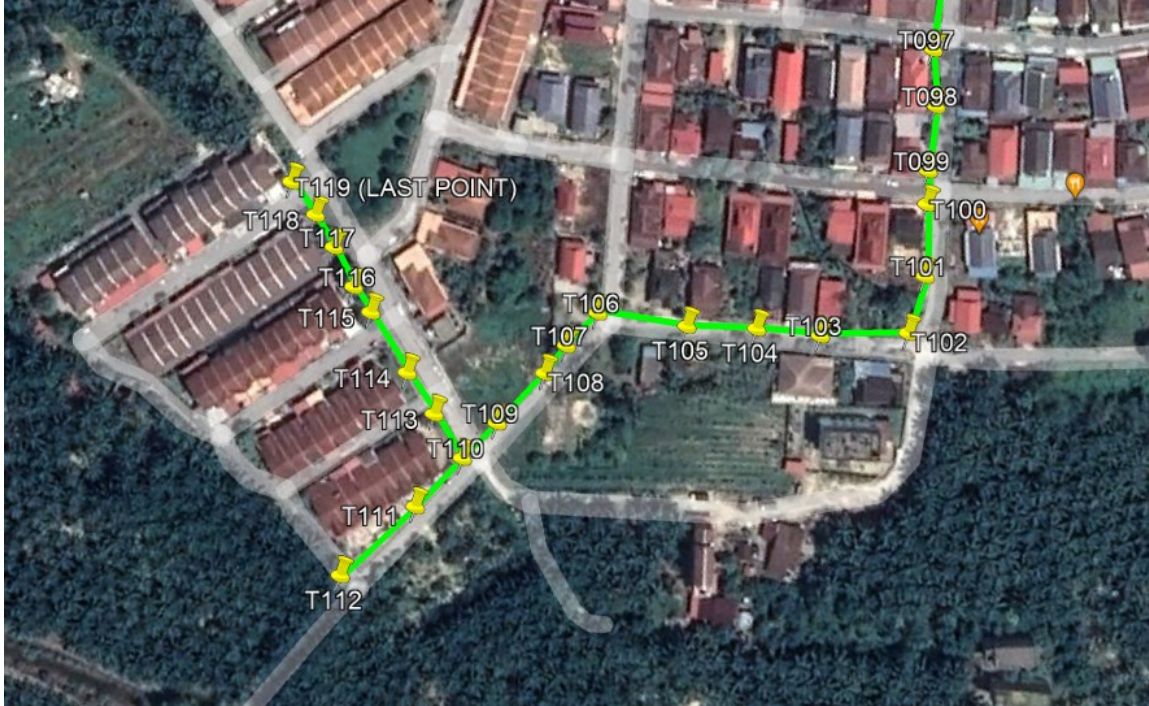
Route 2



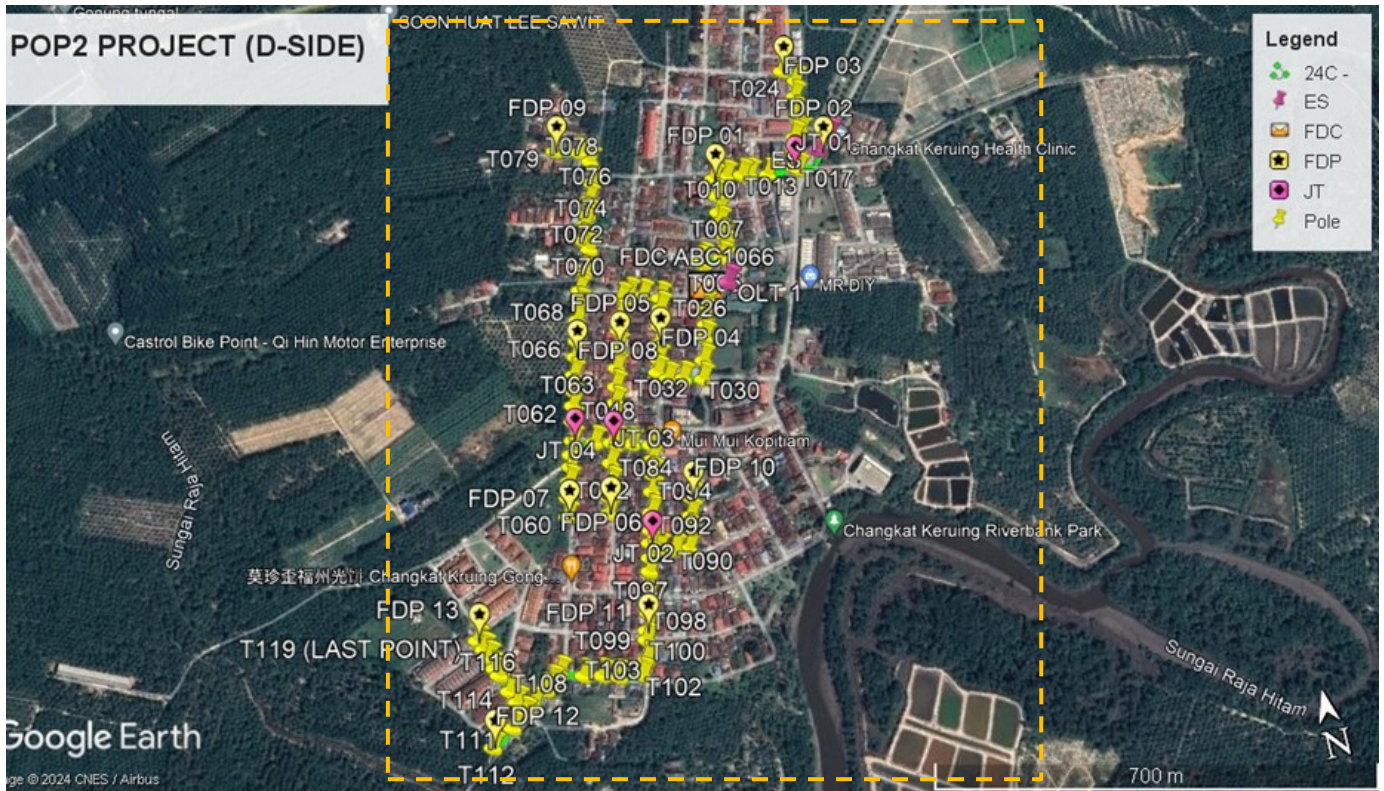


Route 3





Site Plan – KMZ Routing (Prop new Pole)



**Prop New Pole Lat & Long Table**

PROPOSED POLE COORDINATE		
POLE NUMBER	LATITUDE	LONGITUDE
T001	4.379769126	100.6885122
T002	4.379949337	100.6885444
T003	4.380221078	100.6886185
T004	4.380266005	100.6886634
T005	4.380216217	100.6889478
T006	4.38035761	100.6890695
T007	4.380542534	100.6890627
T008	4.380750647	100.68905
T009	4.380911076	100.6890648
T010	4.381170915	100.6890949
T011	4.381441651	100.6891164
T012	4.381430587	100.6893102
T013	4.381398903	100.6895499
T014	4.381380798	100.6896746
9mT015	4.381312905	100.6899412
9mT016	4.381340398	100.6903365
T017	4.381289268	100.6904116
T018	4.381556651	100.6903898
T019	4.381794026	100.690481
T020	4.38186259	100.6905976
T021	4.382020002	100.6906198
T022	4.382150425	100.690605
T023	4.382422166	100.6906422
T024	4.382664235	100.6907177
T025	4.382865736	100.6905457
T026	4.379418427	100.6885139
T027	4.379277108	100.688474
T028	4.379092539	100.6884073
T029	4.378758268	100.6883121
T030	4.37848418	100.6882363
T031	4.378567999	100.687956
T032	4.37861125	100.6877284
T033	4.378740834	100.6875996
T034	4.378926074	100.687662
T035	4.379165461	100.6877149
T036	4.37941541	100.6877947
T037	4.379673908	100.6878715
T038	4.379827967	100.687898
T039	4.379923353	100.6876546
T040	4.379999125	100.6874561
T041	4.379952354	100.6873237
T042	4.379688995	100.6872536
T043	4.379491685	100.6871862
T044	4.379242407	100.6871118
T045	4.378947532	100.6870256
T046	4.378673946	100.6869509
T047	4.378440762	100.6868928
T048	4.378232388	100.6868268
T049	4.37787666	100.6867017
T050	4.377589161	100.6866216

T051	4.377294788	100.6865556
T052	4.377108878	100.6864764
T053	4.376875525	100.6864265
T054	4.377938518	100.686457
T055	4.378038598	100.6861502
T056	4.377841959	100.6860751
T057	4.377671136	100.6860325
T058	4.3774636	100.6859661
T059	4.377228571	100.6858937
T060	4.376968062	100.6858267
T061	4.378318051	100.6862119
T062	4.378545703	100.6862682
T063	4.378751563	100.6863252
T064	4.378989274	100.6863805
T065	4.379253304	100.6864644
T066	4.379477603	100.6865371
T067	4.379789243	100.6866206
T068	4.380016895	100.6867024
T069	4.380221078	100.686749
T070	4.3804665	100.6868774
T071	4.38080647	100.687034
T072	4.380960362	100.6869723
T073	4.381196229	100.6870561
T074	4.381340398	100.6871259
T075	4.381564362	100.6872016
T076	4.381812466	100.6872945
T077	4.382141707	100.6873528
T078	4.382325942	100.6872124
T079	4.382428871	100.6868583
T080	4.377847994	100.6868067
T081	4.377793847	100.686984
T082	4.377710195	100.6872549
T083	4.377495283	100.6872271
T084	4.377279701	100.6871785
T085	4.377036626	100.6871155
T086	4.376746109	100.6870387
T087	4.376486773	100.6869737
T088	4.376317961	100.686914
T089	4.376204973	100.6870189
T090	4.376141438	100.6872446
T091	4.376110593	100.6874471
T092	4.376333216	100.6875252
T093	4.376566904	100.6875879
T094	4.376815679	100.6876556
T095	4.376108581	100.6868647
T096	4.375923341	100.6868137
T097	4.375565769	100.686694
T098	4.375347672	100.6866608
T099	4.375108117	100.6865797
T100	4.374982724	100.6865502
T101	4.374712324	100.6864868
T102	4.37451099	100.6863795
T103	4.374566143	100.6860466
T104	4.374639401	100.6858129

T105	4.374699919	100.6855524
T106	4.374815589	100.6852272
T107	4.374716012	100.6850847
T108	4.374627331	100.6849838
T109	4.37447696	100.6847685
T110	4.374370677	100.6846133
T111	4.374224832	100.6844031
T112	4.374023667	100.6840752
T113	4.37455642	100.6845399
T114	4.374731602	100.6844678
T115	4.374985071	100.6843736
T116	4.3750937	100.6843273
T117	4.375257818	100.6842807
T118	4.375394275	100.6842344
T119	4.375536935	100.6841671

### Overall Pole (Propose New)

No.	Pole & Manhole ID	Distance	Latitude	Longitude	Local Authority
1	FDC T000	0.00	4.379553543	100.688532	Majlis Perbandaran Manjung
2	T001	24.10	4.379769126	100.6885122	Majlis Perbandaran Manjung
3	T002	20.38	4.379949337	100.6885444	Majlis Perbandaran Manjung
4	T003	31.35	4.380221078	100.6886185	Majlis Perbandaran Manjung
5	T004	7.07	4.380266005	100.6886634	Majlis Perbandaran Manjung
6	T005	32.13	4.380216217	100.6889478	Majlis Perbandaran Manjung
7	T006	20.77	4.38035761	100.6890695	Majlis Perbandaran Manjung
8	T007	20.60	4.380542534	100.6890627	Majlis Perbandaran Manjung
9	T008	23.21	4.380750647	100.68905	Majlis Perbandaran Manjung
10	T009	17.93	4.380911076	100.6890648	Majlis Perbandaran Manjung
11	T010	29.12	4.381170915	100.6890949	Majlis Perbandaran Manjung
12	T011	30.23	4.381441651	100.6891164	Majlis Perbandaran Manjung
13	T012	21.61	4.381430587	100.6893102	Majlis Perbandaran Manjung
14	T013	26.92	4.381398903	100.6895499	Majlis Perbandaran Manjung
15	T014	14.03	4.381380798	100.6896746	Majlis Perbandaran Manjung
16	9mT015	30.62	4.381312905	100.6899412	Majlis Perbandaran Manjung
17	9mT016	44.11	4.381340398	100.6903365	Majlis Perbandaran Manjung
18	T017	10.11	4.381289268	100.6904116	Majlis Perbandaran Manjung
19	ES	22.86	4.381304188	100.6906164	Majlis Perbandaran Manjung
20	ES . DP15	30.67	4.381485069	100.6908243	Majlis Perbandaran Manjung
21	T018	49.02	4.381556651	100.6903898	Majlis Perbandaran Manjung
22	T019	28.31	4.381794026	100.690481	Majlis Perbandaran Manjung
23	T020	15.06	4.38186259	100.6905976	Majlis Perbandaran Manjung
24	T021	17.70	4.382020002	100.6906198	Majlis Perbandaran Manjung
25	T022	14.61	4.382150425	100.690605	Majlis Perbandaran Manjung
26	T023	30.53	4.382422166	100.6906422	Majlis Perbandaran Manjung

27	T024	28.23	4.382664235	100.6907177	Majlis Perbandaran Manjung
28	T025	29.49	4.382865736	100.6905457	Majlis Perbandaran Manjung
29	FDC	431.51	4.379553543	100.688532	Majlis Perbandaran Manjung
30	T026	15.18	4.379418427	100.6885139	Majlis Perbandaran Manjung
31	T027	16.35	4.379277108	100.688474	Majlis Perbandaran Manjung
32	T028	21.85	4.379092539	100.6884073	Majlis Perbandaran Manjung
33	T029	38.69	4.378758268	100.6883121	Majlis Perbandaran Manjung
34	T030	31.66	4.37848418	100.6882363	Majlis Perbandaran Manjung
35	T031	32.57	4.378567999	100.687956	Majlis Perbandaran Manjung
36	T032	25.80	4.37861125	100.6877284	Majlis Perbandaran Manjung
37	T033	20.33	4.378740834	100.6875996	Majlis Perbandaran Manjung
38	T034	21.76	4.378926074	100.687662	Majlis Perbandaran Manjung
39	T035	27.29	4.379165461	100.6877149	Majlis Perbandaran Manjung
40	T036	29.21	4.37941541	100.6877947	Majlis Perbandaran Manjung
41	T037	30.02	4.379673908	100.6878715	Majlis Perbandaran Manjung
42	T038	17.40	4.379827967	100.687898	Majlis Perbandaran Manjung
43	T039	29.10	4.379923353	100.6876546	Majlis Perbandaran Manjung
44	T040	23.65	4.379999125	100.6874561	Majlis Perbandaran Manjung
45	T041	15.63	4.379952354	100.6873237	Majlis Perbandaran Manjung
46	T042	30.34	4.379688995	100.6872536	Majlis Perbandaran Manjung
47	T043	23.21	4.379491685	100.6871862	Majlis Perbandaran Manjung
48	T044	28.96	4.379242407	100.6871118	Majlis Perbandaran Manjung
49	T045	34.20	4.378947532	100.6870256	Majlis Perbandaran Manjung
50	T046	31.57	4.378673946	100.6869509	Majlis Perbandaran Manjung
51	T047	26.75	4.378440762	100.6868928	Majlis Perbandaran Manjung
52	T048	24.33	4.378232388	100.6868268	Majlis Perbandaran Manjung
53	T049	41.98	4.37787666	100.6867017	Majlis Perbandaran Manjung

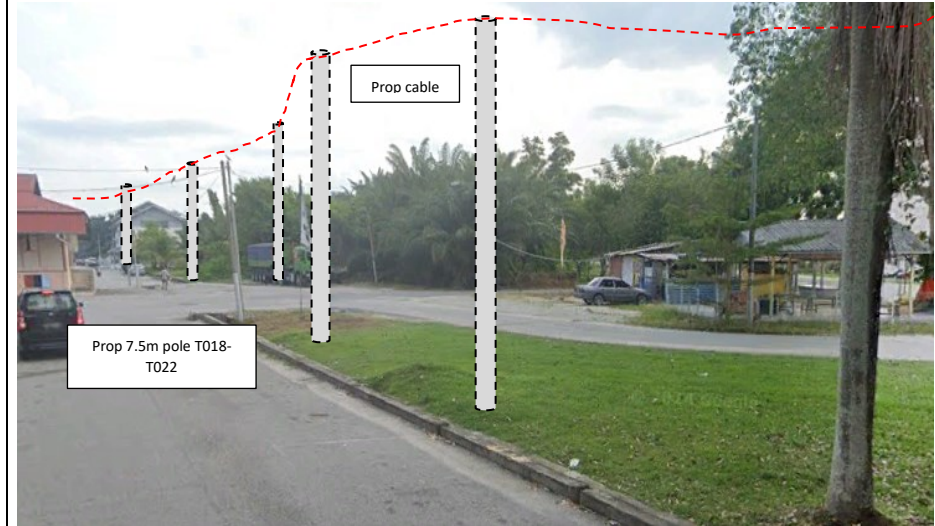
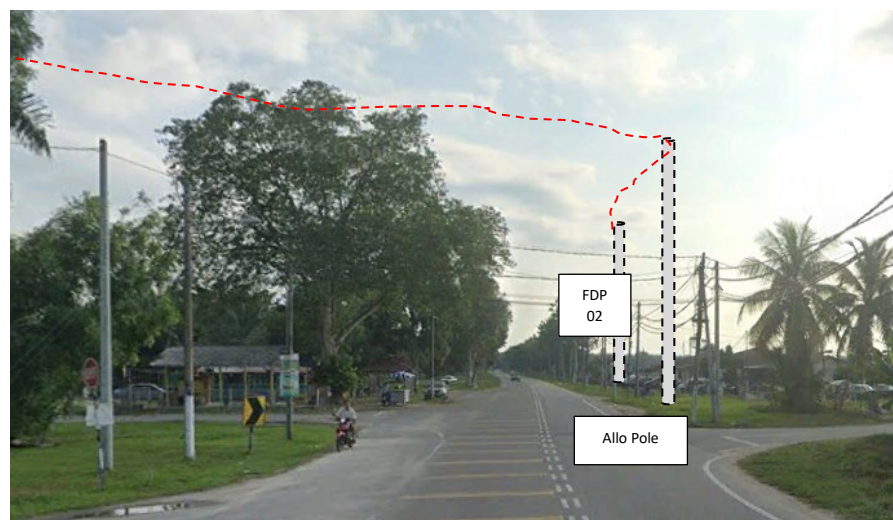
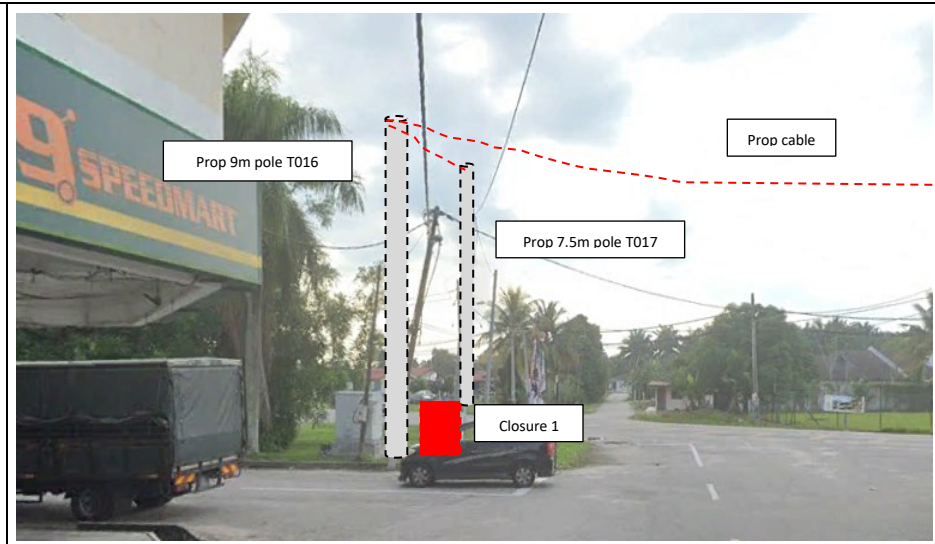
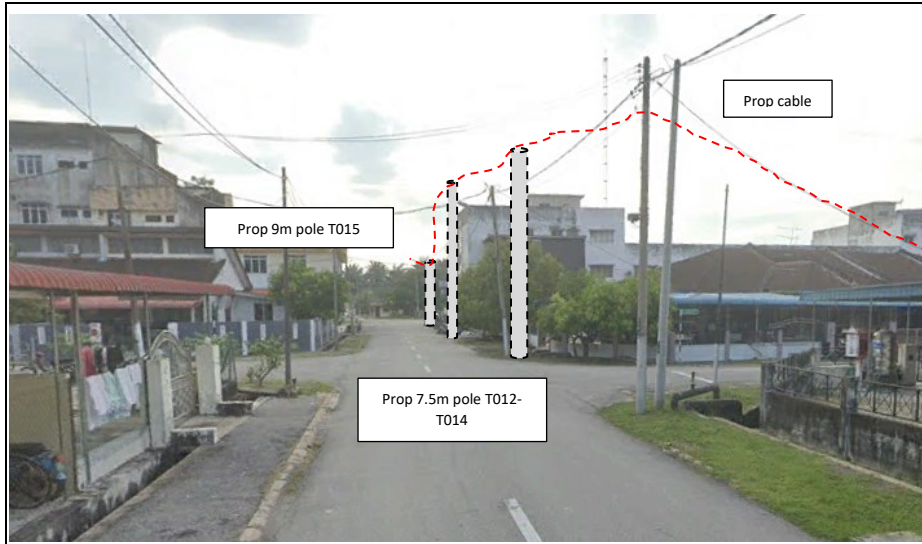
54	T050	33.22	4.377589161	100.6866216	Majlis Perbandaran Manjung
55	T051	33.58	4.377294788	100.6865556	Majlis Perbandaran Manjung
56	T052	22.49	4.377108878	100.6864764	Majlis Perbandaran Manjung
57	T053	26.57	4.376875525	100.6864265	Majlis Perbandaran Manjung
58	T054	118.38	4.377938518	100.686457	Majlis Perbandaran Manjung
59	T055	35.92	4.378038598	100.6861502	Majlis Perbandaran Manjung
60	T056	23.43	4.377841959	100.6860751	Majlis Perbandaran Manjung
61	T057	19.60	4.377671136	100.6860325	Majlis Perbandaran Manjung
62	T058	24.26	4.3774636	100.6859661	Majlis Perbandaran Manjung
63	T059	27.38	4.377228571	100.6858937	Majlis Perbandaran Manjung
64	T060	29.95	4.376968062	100.6858267	Majlis Perbandaran Manjung
65	T061	156.28	4.378318051	100.6862119	Majlis Perbandaran Manjung
66	T062	26.11	4.378545703	100.6862682	Majlis Perbandaran Manjung
67	T063	23.78	4.378751563	100.6863252	Majlis Perbandaran Manjung
68	T064	27.17	4.378989274	100.6863805	Majlis Perbandaran Manjung
69	T065	30.84	4.379253304	100.6864644	Majlis Perbandaran Manjung
70	T066	26.25	4.379477603	100.6865371	Majlis Perbandaran Manjung
71	T067	35.91	4.379789243	100.6866206	Majlis Perbandaran Manjung
72	T068	26.93	4.380016895	100.6867024	Majlis Perbandaran Manjung
73	T069	23.31	4.380221078	100.686749	Majlis Perbandaran Manjung
74	T070	30.83	4.3804665	100.6868774	Majlis Perbandaran Manjung
75	T071	41.67	4.38080647	100.687034	Majlis Perbandaran Manjung
76	T072	18.46	4.380960362	100.6869723	Majlis Perbandaran Manjung
77	T073	27.87	4.381196229	100.6870561	Majlis Perbandaran Manjung
78	T074	17.83	4.381340398	100.6871259	Majlis Perbandaran Manjung
79	T075	26.32	4.381564362	100.6872016	Majlis Perbandaran Manjung
80	T076	29.49	4.381812466	100.6872945	Majlis Perbandaran Manjung

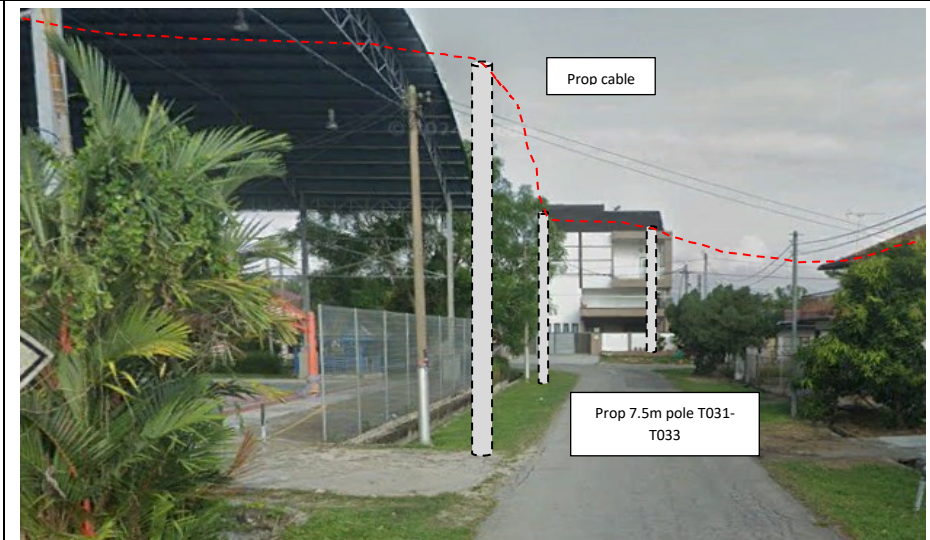
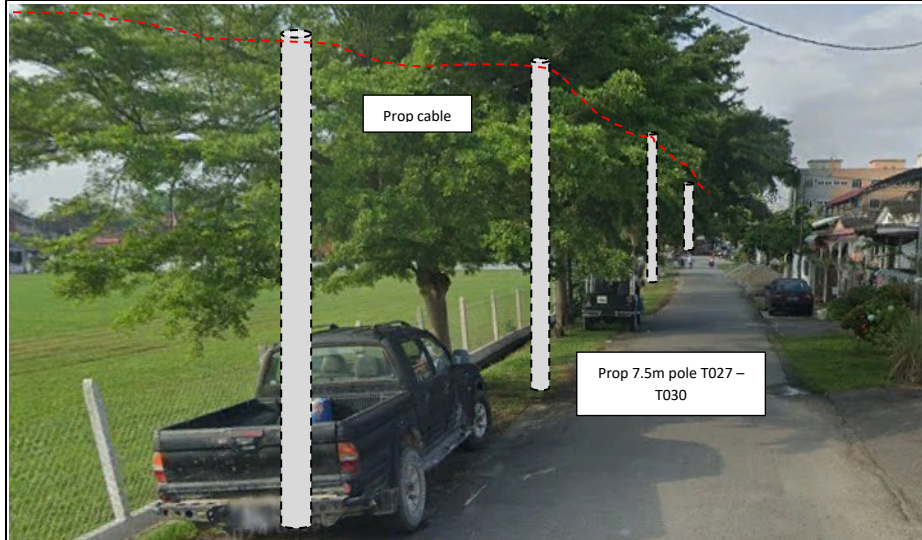
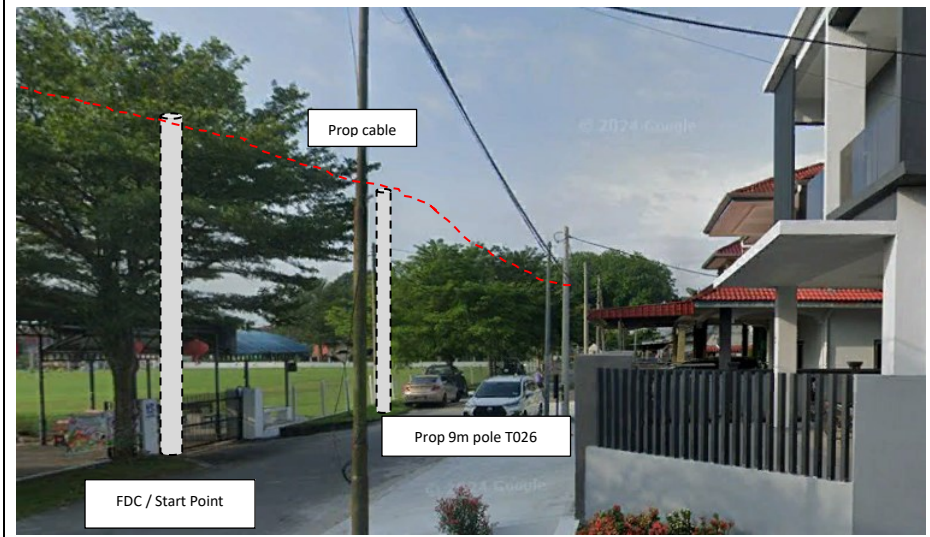
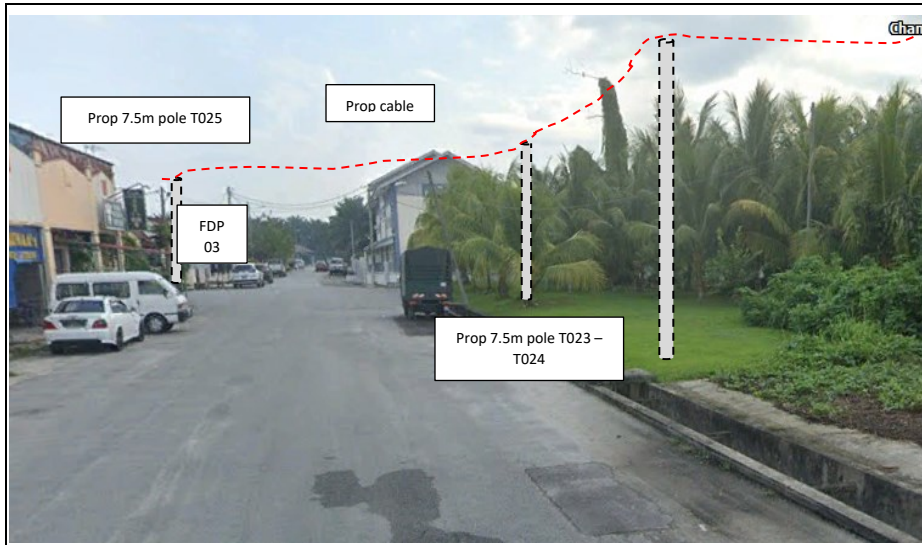
81	T077	37.22	4.382141707	100.6873528	Majlis Perbandaran Manjung
82	T078	25.79	4.382325942	100.6872124	Majlis Perbandaran Manjung
83	T079	41.04	4.382428871	100.6868583	Majlis Perbandaran Manjung
84	T080	509.98	4.377847994	100.6868067	Majlis Perbandaran Manjung
85	T081	20.64	4.377793847	100.686984	Majlis Perbandaran Manjung
86	T082	31.56	4.377710195	100.6872549	Majlis Perbandaran Manjung
87	T083	24.12	4.377495283	100.6872271	Majlis Perbandaran Manjung
88	T084	24.60	4.377279701	100.6871785	Majlis Perbandaran Manjung
89	T085	27.95	4.377036626	100.6871155	Majlis Perbandaran Manjung
90	T086	33.45	4.376746109	100.6870387	Majlis Perbandaran Manjung
91	T087	29.76	4.376486773	100.6869737	Majlis Perbandaran Manjung
92	T088	19.93	4.376317961	100.686914	Majlis Perbandaran Manjung
93	T089	17.17	4.376204973	100.6870189	Majlis Perbandaran Manjung
94	T090	26.10	4.376141438	100.6872446	Majlis Perbandaran Manjung
95	T091	22.80	4.376110593	100.6874471	Majlis Perbandaran Manjung
96	T092	26.26	4.376333216	100.6875252	Majlis Perbandaran Manjung
97	T093	26.93	4.376566904	100.6875879	Majlis Perbandaran Manjung
98	T094	28.70	4.376815679	100.6876556	Majlis Perbandaran Manjung
99	T095	118.10	4.376108581	100.6868647	Majlis Perbandaran Manjung
100	T096	21.39	4.375923341	100.6868137	Majlis Perbandaran Manjung
101	T097	41.98	4.375565769	100.686694	Majlis Perbandaran Manjung
102	T098	24.56	4.375347672	100.6866608	Majlis Perbandaran Manjung
103	T099	28.16	4.375108117	100.6865797	Majlis Perbandaran Manjung
104	T100	14.34	4.374982724	100.6865502	Majlis Perbandaran Manjung
105	T101	30.92	4.374712324	100.6864868	Majlis Perbandaran Manjung
106	T102	25.40	4.37451099	100.6863795	Majlis Perbandaran Manjung
107	T103	37.57	4.374566143	100.6860466	Majlis Perbandaran Manjung

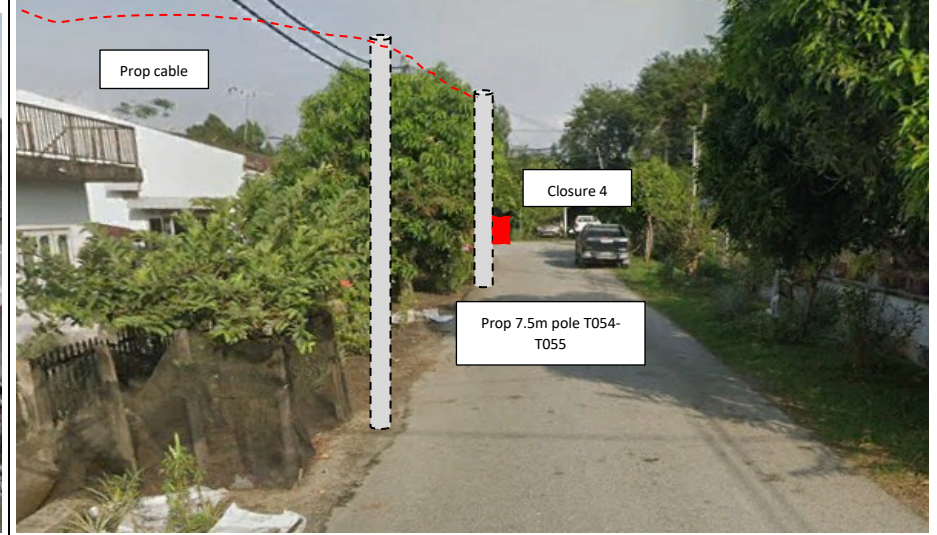
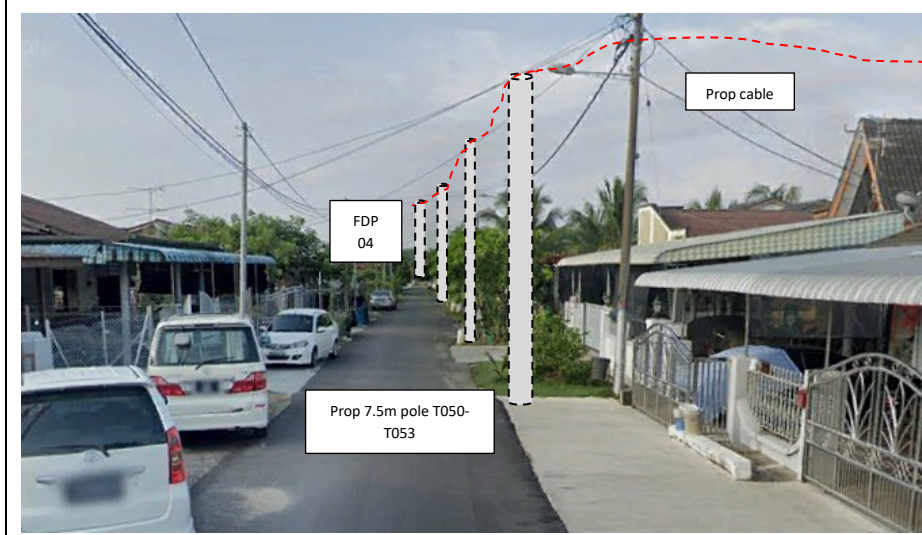
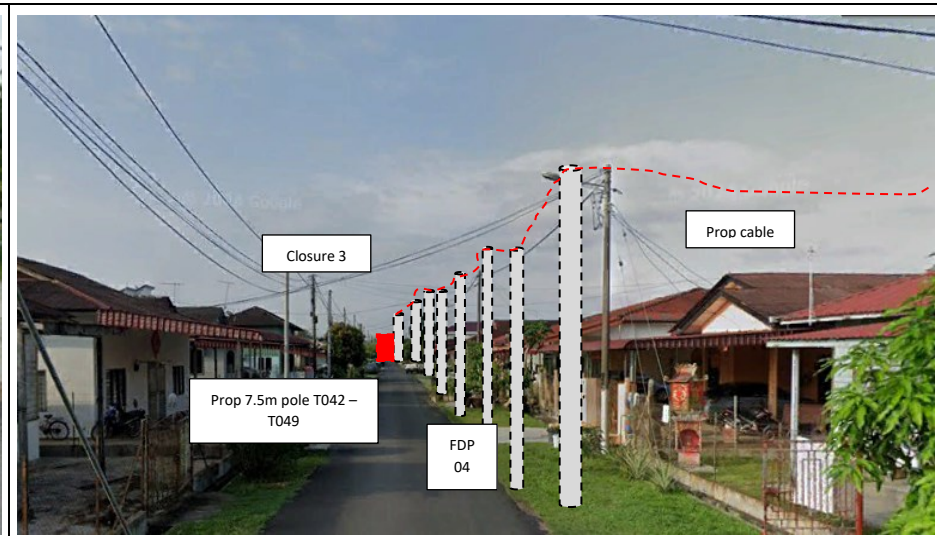
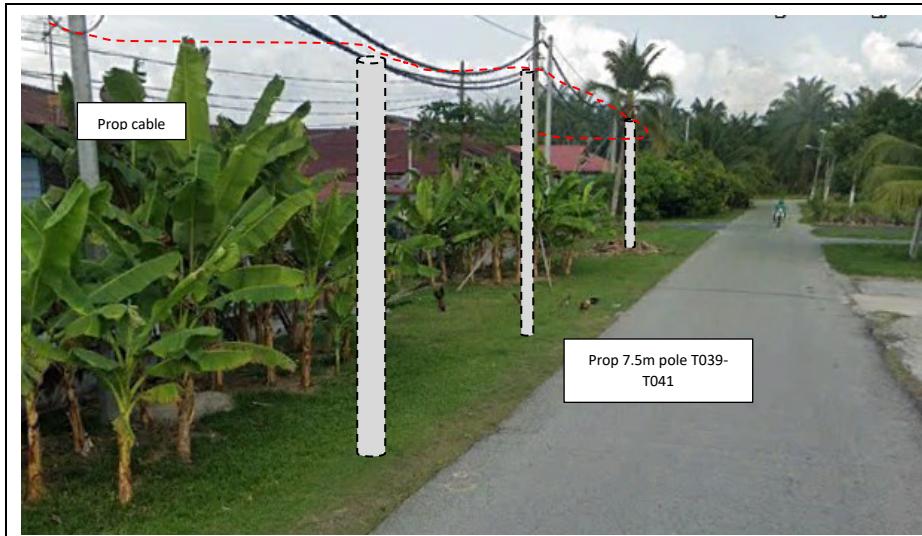
108	T104	27.26	4.374639401	100.6858129	Majlis Perbandaran Manjung
109	T105	29.77	4.374699919	100.6855524	Majlis Perbandaran Manjung
110	T106	38.42	4.374815589	100.6852272	Majlis Perbandaran Manjung
111	T107	19.35	4.374716012	100.6850847	Majlis Perbandaran Manjung
112	T108	14.96	4.374627331	100.6849838	Majlis Perbandaran Manjung
113	T109	29.23	4.37447696	100.6847685	Majlis Perbandaran Manjung
114	T110	20.94	4.374370677	100.6846133	Majlis Perbandaran Manjung
115	T111	28.48	4.374224832	100.6844031	Majlis Perbandaran Manjung
116	T112	42.82	4.374023667	100.6840752	Majlis Perbandaran Manjung
117	T113	78.70	4.37455642	100.6845399	Majlis Perbandaran Manjung
118	T114	21.09	4.374731602	100.6844678	Majlis Perbandaran Manjung
119	T115	30.10	4.374985071	100.6843736	Majlis Perbandaran Manjung
120	T116	13.14	4.3750937	100.6843273	Majlis Perbandaran Manjung
121	T117	18.99	4.375257818	100.6842807	Majlis Perbandaran Manjung
122	T118	16.04	4.375394275	100.6842344	Majlis Perbandaran Manjung
123	T119	17.56	4.375536935	100.6841671	Majlis Perbandaran Manjung

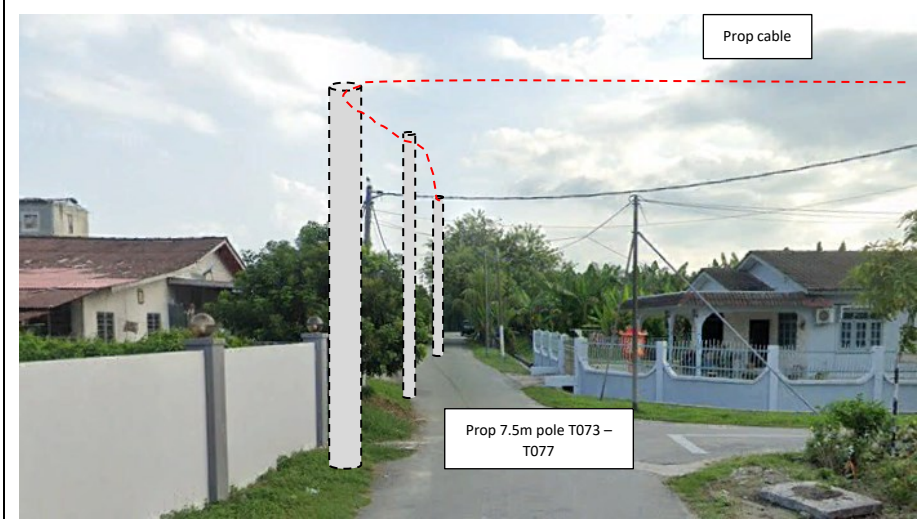
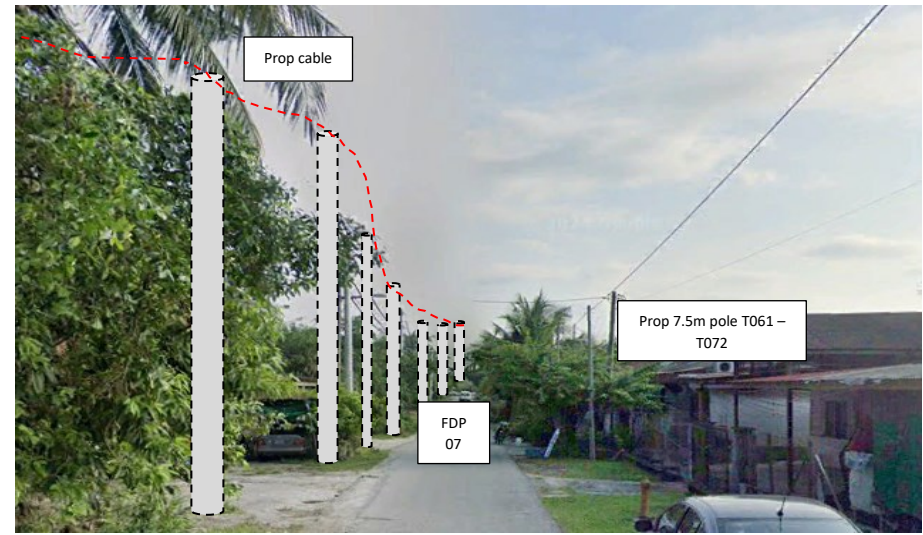
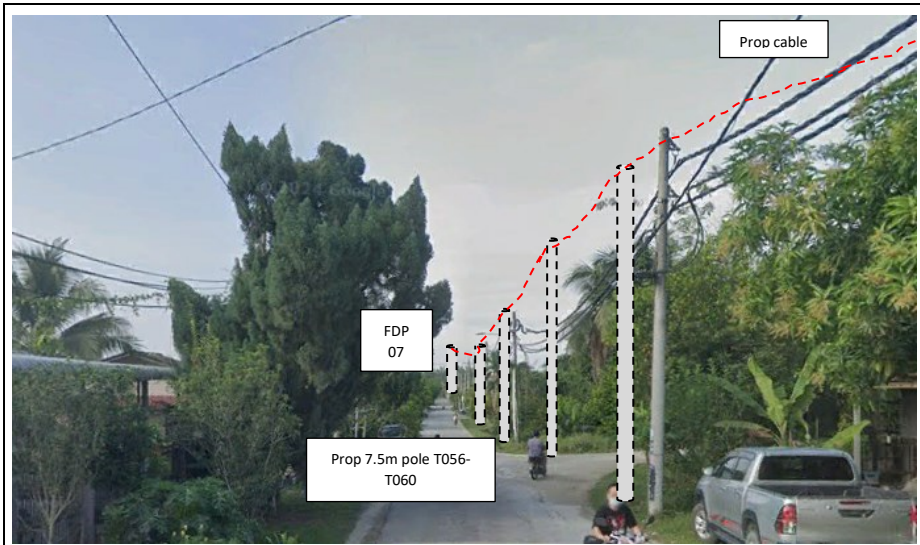
Site Photos – Proposed to install pole

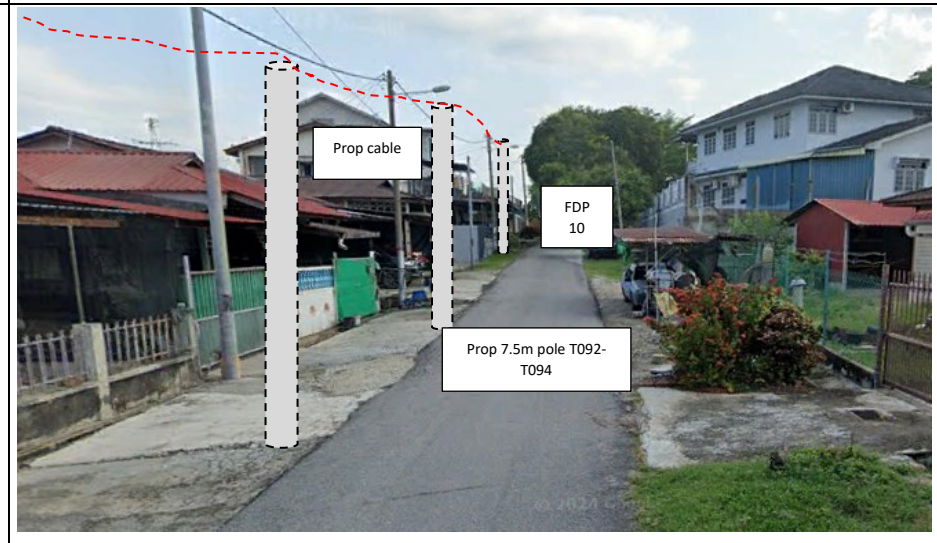
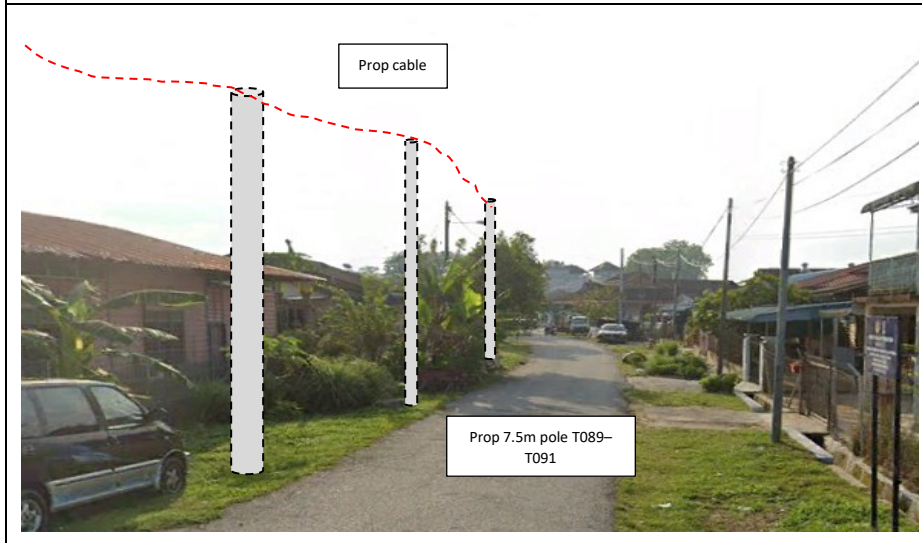
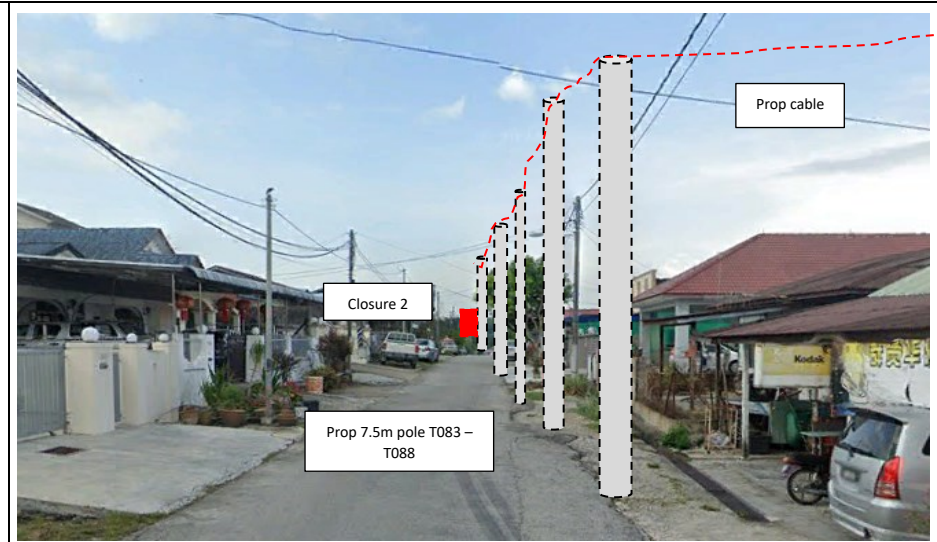


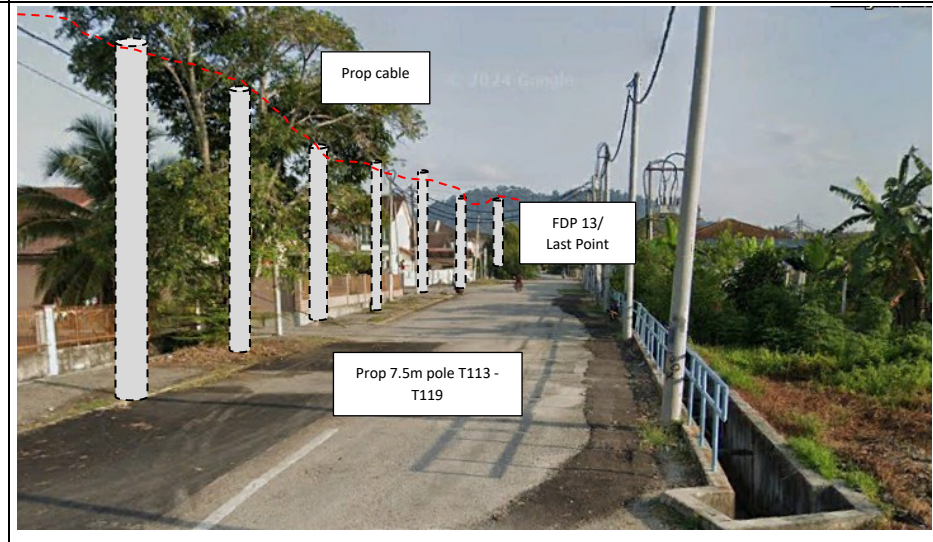
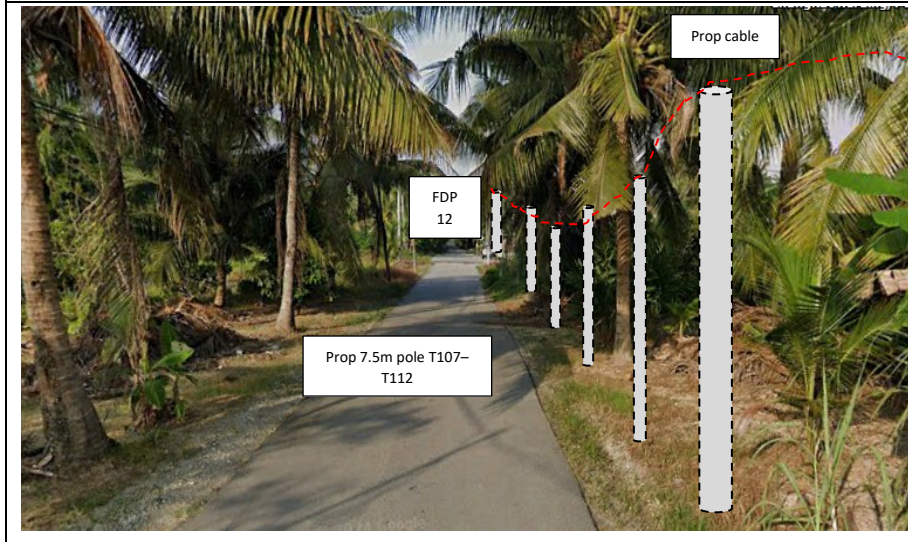
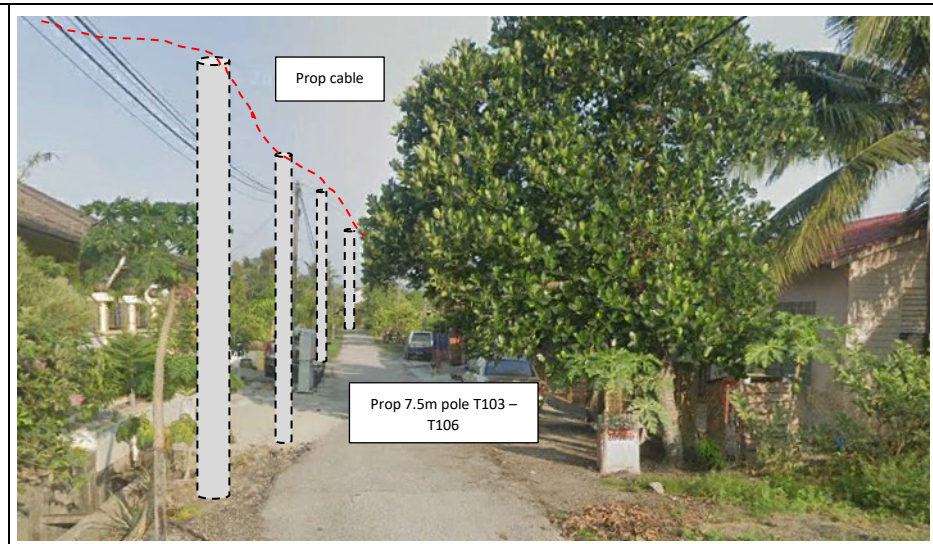
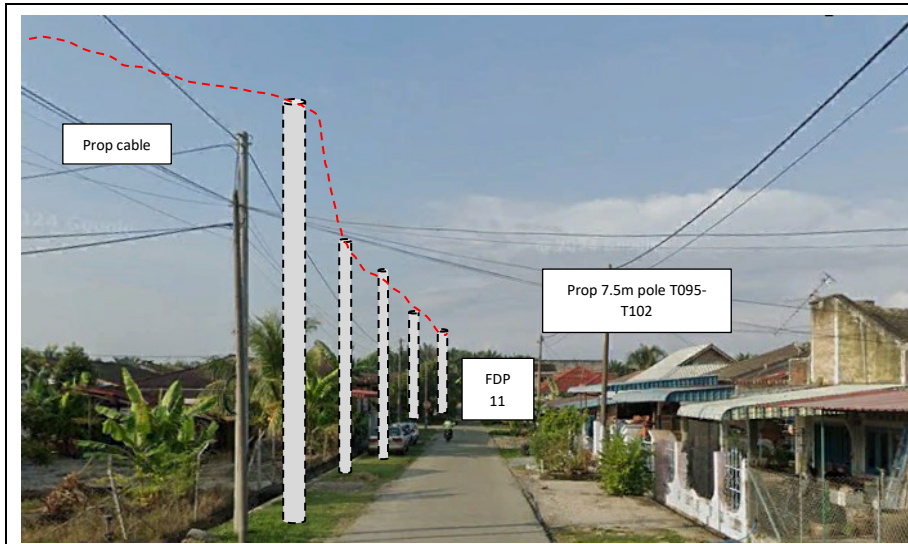












### 3rd Parties Dependencies

No.	Local Council/ Authority	Remark
1	JKR Manjung	
2	Majlis Perbandaran Manjung	
3		
4		
5		
6		

## PERAKUAN

1. Kami mengaku bahawa kami akan menggantirugi kepada Pihak Berkuasa Melulus/Tempatan dari segi sebarang tuntutan sivil/kerugian/kerosakan harta benda/kehilangan nyawa dan sebagainya
2. Kami mengaku akan mematuhi syarat-syarat piawaian dan spesifikasi kerja yang telah ditetapkan dan kegagalan berbuat demikian, Pihak Koridor Utiliti Teknologi Darul Ridzuan Sdn. Bhd. dan Pihak Berkuasa Melulus/Tempatan berhak membatalkan sebarang kelulusan terhadap permohonan ini tanpa sebarang alasan.
3. Kami bertanggungjawab akan mematuhi apa jua arahan dari Pihak Berkuasa Melulus/Tempatan sekiranya diberi arahan untuk mengalih segala aset-aset Agensi Utiliti bagi pelebaran jalan dan sebagainya dengan kaedah pembiayaannya yang berdasarkan kepada **Garis Panduan Pengalihan dan Pemasangan Semula Utiliti Dalam Pelaksanaan Program dan Projek Kerajaan Bilangan 1 Tahun 2016**
4. Kami yang bertandatangan di bawah ini bersetuju untuk mematuhi **Undang-Undang Kecil Kerja Di Jalan 1996** dan apa-apa terma atau syarat-syarat yang dikenakan oleh Pihak Berkuasa Melulus/Tempatan dan akan menanggung segala kos bagi pematuhan itu. Kami akan bertanggungjawab sepenuhnya ke atas segala rekabentuk dan perjalanan kerja-kerja tersebut

Tandatangan & Cop Syarikat  
Penyedia Utiliti/Pemaju



Tandatangan & Cop Syarikat Perunding  
Kejuruteraan



Nama : RAJA SIFFUDIN ISKANDAR

Jawatan : PROJECT ENGINEER

No. HP : 0193379505

Emel : iskandar@allo.my

Tarikh : 22/8/2024

Nama : MUHAMAD AZFAR BIN AZMY

Jawatan : IMPLEMENTATION MANAGER

No. HP : 017-2791385

Emel : azfar.wmsb@gmail.com

Tarikh : 22/8/2024