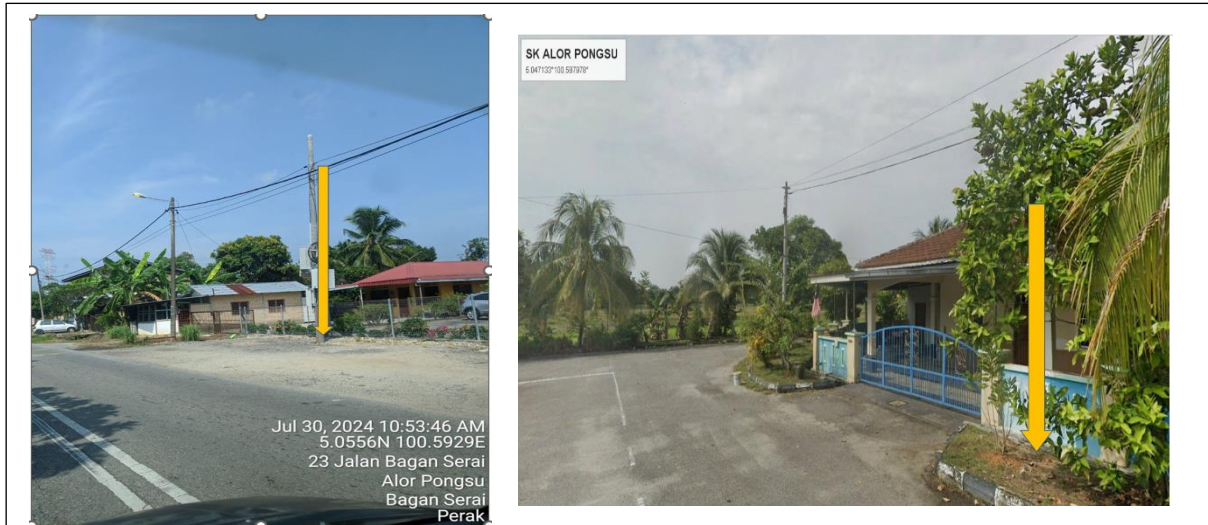


## POP2 D/SIDE ABA3001 SK ALOR PONGSU – Technical Proposal

Company Name	: A&A MEGAH SDN BHD
Company Address	: LOT A1,TINGKAT ATAS,MEDAN NIAGA PKNP,JALAN KEMPADANG PERDANA 1,25150 KUANTAN, PAHANG
Prepared By	: NURUL IZATI BT ABDULLAH
Date	: 08/08/2024



**POINT A**

**POINT B**

### Starting Point

Site / Boundary Name	: Sk Alor Pongsu
Address	: Sk Alor Pongsu Jalan Selama,Alor Pongsu 34300 Bagan Serai,
District	: Perak
Postcode	: Bagan Serai
State	: 34300
GPS Coordinate	: Perak
LRD	: 5.0556, 100.5929

### End Point

Site / Boundary Name	: Alor Pongsu
Address	: Jalan Melati,Tman Pongsu Melati 34300 Bagan Serai, Perak
District	: Bagan Serai
Postcode	: 34300
State	: Perak
GPS Coordinate	: 5.050984°, 100.585057°
LRD	: B

### Work Summary

No	Proposed Distance and Method	Unit	Qty
1	Horizontal Directional Drilling (HDD)	m	<b>0</b>
2	Carriage Way Open trench (CW)	m	<b>0</b>
3	Grass Verge Open Trenching (GV)	m	<b>0</b>
4	Micro trenching (MT)	m	<b>0</b>
	Total		<b>m</b>

	Other Information	Unit	Qty
1	Proposed Manhole	EA	<b>0</b>
2	Proposed Pole	EA	<b>83</b>
3	Joint Closure	EA	<b>3</b>
4	Estimated time required for completion	days	<b>30</b>

### Local Authority Summary

1. Daerah Bagan Serai

<b>Bil</b>	<b>Items</b>	<b>Owner</b>	<b>Quantity</b>	<b>Distance</b>
1	HDD/Open Cut	JKR	-	-
		Majlis	-	-
		Estate / Private Land	-	-
2	New Pole	JKR	24	1023M
		Majlis	59	1980M
		Estate / Private Land	-	-
3	Existing TNB Pole	JKR	-	-
		Majlis	-	-
		Estate / Private Land	-	-
Total				3003m

**Site Plan – KMZ (Overview site area)**



**Green Colour – Estate/Private**

**Land Red Colour – JKR Kerian**





**Site Plan – KMZ Routing (Prop new Pole)**



**Propose New Pole Lat & Long Table**

PROPOSED POLE COORDINATE		
POLE NUMBER	LATITUDE	LONGITUDE
T001	5.055260°	100.592715°
T002	5.054829°	100.591803°
T003	5.054992°	100.591659°
T004	5.055209°	100.591497°
T005	5.055472°	100.591290°
T006	5.055653°	100.591164°
T007	5.055907°	100.590976°
T008	5.056179°	100.590778°
T009	5.056450°	100.590589°
T010	5.056713°	100.590382°
T011	5.056976°	100.590176°
T012	5.057257°	100.589969°
T013	5.054611°	100.592082°
T014	5.054395°	100.591775°
T015	5.054151°	100.591449°
T016	5.053881°	100.591079°
T017	5.053628°	100.590754°
T018	5.053358°	100.590392°
T019	5.053079°	100.590049°
T020	5.052889°	100.589805°
T021	5.052636°	100.589994°
T022	5.052427°	100.590147°
T023	5.052210°	100.590299°
T024	5.051974°	100.590470°
T025	5.052028°	100.590542°
T026	5.051793°	100.590713°
T027	5.051575°	100.590902°
T028	5.051285°	100.591109°
T029	5.051023°	100.591297°
T030	5.050796°	100.591459°
T031	5.050570°	100.591639°
T032	5.050334°	100.591819°
T033	5.052763°	100.589624°
T034	5.052574°	100.589353°
T035	5.052285°	100.589001°
T036	5.052051°	100.588703°
T037	5.051889°	100.588486°
T038	5.051762°	100.588323°
T039	5.051618°	100.588125°
T040	5.051492°	100.587953°
T041	5.051375°	100.587799°
T042	5.051258°	100.587610°
T043	5.051132°	100.587447°
T044	5.051005°	100.587275°
T045	5.050753°	100.586950°
T046	5.050492°	100.586462°
T047	5.050267°	100.586128°
T048	5.049932°	100.586028°
T049	5.049688°	100.586235°
T050	5.049443°	100.586415°

T051	100.586415°	100.586604°
T052	5.048927°	100.586594°
T053	5.048692°	100.586765°
T054	5.048429°	100.586981°
T055	5.048211°	100.587142°
T056	5.048003°	100.587304°
T057	5.047786°	100.587475°
T058	5.047568°	100.587637°
T059	5.047342°	100.587808°
T060	5.047133°	100.587978°
T061	5.050186°	100.585650°
T062	5.050422°	100.585434°
T063	5.050558°	100.585299°
T064	5.050803°	100.585092°
T065	5.050939°	100.584985°
T066	5.051292°	100.584670°
T067	5.051193°	100.584462°
T068	5.051438°	100.584264°
T069	5.051673°	100.584085°
T070	5.051873°	100.583923°
T071	5.052135°	100.583725°
T072	5.052335°	100.583572°
T073	5.052552°	100.583392°
T074	5.052913°	100.583880°
T075	5.052704°	100.584042°
T076	5.052469°	100.584213°
T077	5.052251°	100.584375°
T078	5.051989°	100.584554°
T079	5.051771°	100.584743°
T080	5.051563°	100.584896°
T081	5.051345°	100.585067°
T082	5.051146°	100.585256°
T083	5.050984°	100.585057°

**Overall (Propose New & Existing)**

No.	Pole ID	Distance	Latitude	Longitude	Local Authority
1	T001	36	5.055260°	100.592715°	JKR Kerian
2	ALPONG 0052 000M	31	5.055087°	100.592502°	JKR Kerian
3	ALPONG 0051 000M	25	5.054938°	100.592341°	JKR Kerian
4	ALPONG 0050 000M	25	5.054814°	100.592176°	JKR Kerian
5	ALPONG 0049 000M	21	5.054692°	100.591987°	JKR Kerian
6	T002	26	5.054829°	100.591803°	Estate/Private Land
7	T003	27	5.054992°	100.591659°	Estate/Private Land
8	T004	31	5.055209°	100.591497°	Estate/Private Land
9	T005	38	5.055472°	100.591290°	Estate/Private Land
10	T006	25	5.055653°	100.591164°	Estate/Private Land
11	T007	36	5.055907°	100.590976°	Estate/Private Land
12	T008	39	5.056179°	100.590778°	Estate/Private Land
13	T009	38	5.056450°	100.590589°	Estate/Private Land
14	T010	38	5.056713°	100.590382°	Estate/Private Land
15	T011	38	5.056976°	100.590176°	Estate/Private Land
16	T012	40	5.057257°	100.589969°	Estate/Private Land
17	T013	15	5.054611°	100.592082°	Estate/Private Land
18	T014	42	5.054395°	100.591775°	JKR Kerian
19	T015	46	5.054151°	100.591449°	JKR Kerian
20	T016	40	5.053881°	100.591079°	JKR Kerian
21	T017	42	5.053628°	100.590754°	JKR Kerian
22	T018	50	5.053358°	100.590392°	JKR Kerian
23	T019	50	5.053079°	100.590049°	JKR Kerian
24	T020	34	5.052889°	100.589805°	JKR Kerian
25	T021	35	5.052636°	100.589994°	JKR Kerian
26	T022	30	5.052427°	100.590147°	JKR Kerian
27	T023	30	5.052210°	100.590299°	JKR Kerian
28	T024	34	5.051974°	100.590470°	JKR Kerian
29	T025	15	5.052028°	100.590542°	JKR Kerian
30	T026	30	5.051793°	100.590713°	JKR Kerian
31	T027	32	5.051575°	100.590902°	JKR Kerian
32	T028	40	5.051285°	100.591109°	JKR Kerian
33	T029	35	5.051023°	100.591297°	JKR Kerian
34	T030	30	5.050796°	100.591459°	JKR Kerian
35	T031	33	5.050570°	100.591639°	JKR Kerian
36	T032	32	5.050334°	100.591819°	JKR Kerian
37	T033	25	5.052763°	100.589624°	JKR Kerian
38	T034	38	5.052574°	100.589353°	JKR Kerian
39	T035	40	5.052285°	100.589001°	JKR Kerian
40	T036	42	5.052051°	100.588703°	JKR Kerian
41	T037	31	5.051889°	100.588486°	JKR Kerian
42	T038	25	5.051762°	100.588323°	JKR Kerian
43	T039	28	5.051618°	100.588125°	JKR Kerian
44	T040	23	5.051492°	100.587953°	JKR Kerian
45	T041	23	5.051375°	100.587799°	JKR Kerian
46	T042	26	5.051258°	100.587610°	JKR Kerian
47	T043	23	5.051132°	100.587447°	JKR Kerian
48	T044	23	5.051005°	100.587275°	JKR Kerian
49	T045	40	5.050753°	100.586950°	JKR Kerian
50	ALPONG 0043 000M	25	5.050704°	100.586732°	JKR Kerian

51	T046	40	5.050492°	100.586462°	JKR Kerian
52	T047	45	5.050267°	100.586128°	JKR Kerian
53	ALPONG 0042 000M	27	5.050124°	100.585948°	JKR Kerian
54	ALPONG 0041 000M	25	5.050005°	100.585776°	JKR Kerian
55	T048	26	5.049932°	100.586028°	Estate/Private Land
56	T049	36	5.049688°	100.586235°	Estate/Private Land
57	T050	35	5.049443°	100.586415°	Estate/Private Land
58	T051	36	100.586415°	100.586604°	Estate/Private Land
60	T052	31	5.048927°	100.586594°	Estate/Private Land
61	T053	33	5.048692°	100.586765°	Estate/Private Land
62	T054	31	5.048429°	100.586981°	Estate/Private Land
63	T055	26	5.048211°	100.587142°	Estate/Private Land
64	T056	32	5.048003°	100.587304°	Estate/Private Land
65	T057	34	5.047786°	100.587475°	Estate/Private Land
66	T058	30	5.047568°	100.587637°	Estate/Private Land
67	T059	35	5.047342°	100.587808°	Estate/Private Land
68	T060	34	5.047133°	100.587978°	Estate/Private Land
69	T061	26	5.050186°	100.585650°	Estate/Private Land
70	T062	36	5.050422°	100.585434°	Estate/Private Land
71	T063	22	5.050558°	100.585299°	Estate/Private Land
70	T064	36	5.050803°	100.585092°	Estate/Private Land
71	T065	20	5.050939°	100.584985°	Estate/Private Land
72	T066	40	5.051292°	100.584670°	Estate/Private Land
73	T067	24	5.051193°	100.584462°	Estate/Private Land
74	T068	34	5.051438°	100.584264°	Estate/Private Land
75	T069	34	5.051673°	100.584085°	Estate/Private Land
76	T070	28	5.051873°	100.583923°	Estate/Private Land
77	T071	38	5.052135°	100.583725°	Estate/Private Land
78	T072	30	5.052335°	100.583572°	Estate/Private Land
79	T073	32	5.052552°	100.583392°	Estate/Private Land
80	T074	32	5.052913°	100.583880°	Estate/Private Land
81	T075	32	5.052704°	100.584042°	Estate/Private Land
82	T076	32	5.052469°	100.584213°	Estate/Private Land
83	T077	35	5.052251°	100.584375°	Estate/Private Land
84	T078	34	5.051989°	100.584554°	Estate/Private Land
85	T079	30	5.051771°	100.584743°	Estate/Private Land
86	T080	33	5.051563°	100.584896°	Estate/Private Land
87	T081	30	5.051345°	100.585067°	Estate/Private Land
88	T082	30	5.051146°	100.585256°	Estate/Private Land
89	T083	31	5.050984°	100.585057°	Estate/Private Land



PROJEK PENYEDIAAN DAN PENYELENGGARAAN POINT OF PRESENCE (POP) FASA 2: HAB INFRASTRUKTUR GENTIAN OPTIK BERHAMPIRAN DENGAN SEKOLAH, KAWASAN PERINDUSTRIAN, PREMIS KERAJAAN DAN KOMUNITI SEKITARNYA OLEH KEMENTERIAN KOMUNIKASI MALAYSIA - ZON UTARA (KKMM.400-11/17/132(1))



Site Photos – Proposed New Pole (Pole 7.5m )



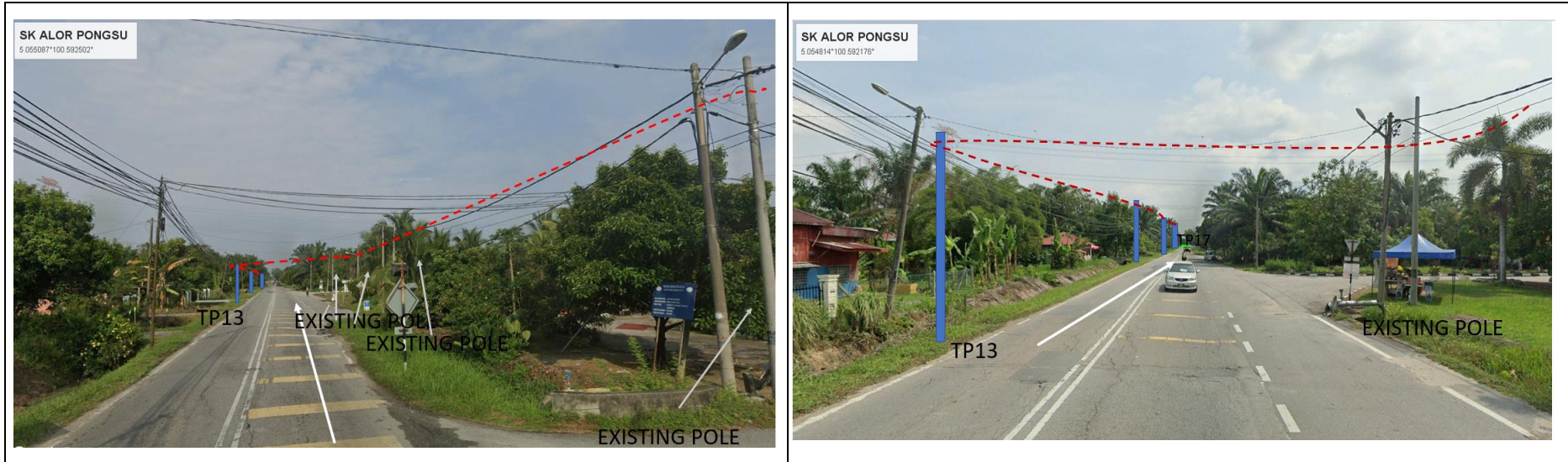


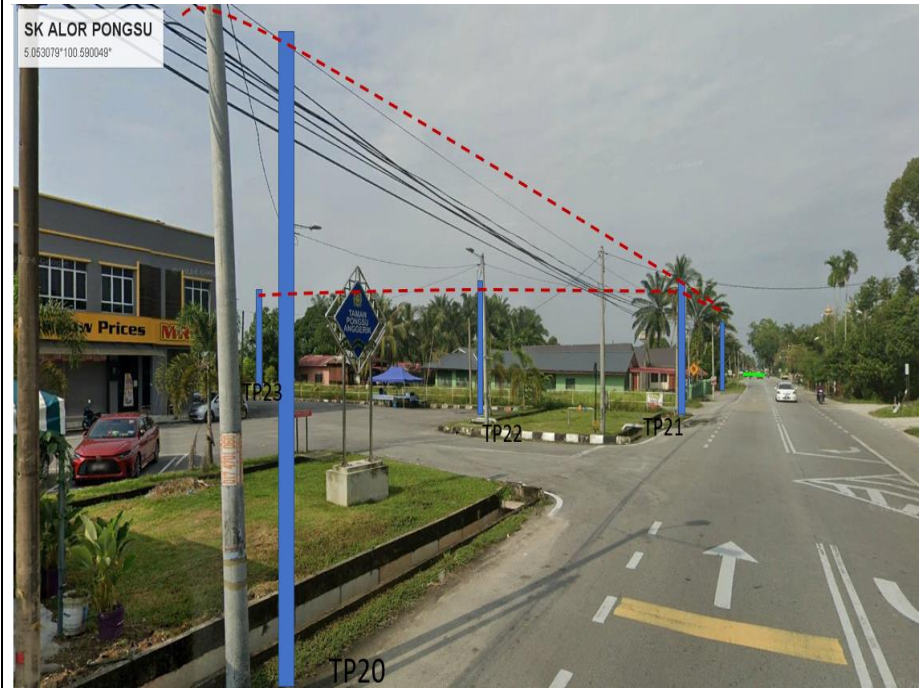
PROJEK PENYEDIAAN DAN PENYELENGGARAAN POINT OF PRESENCE (POP) FASA 2: HAB INFRASTRUKTUR GENTIAN OPTIK BERHAMPIRAN DENGAN SEKOLAH, KAWASAN PERINDUSTRIAN, PREMIS KERAJAAN DAN KOMUNITI SEKITARNYA OLEH KEMENTERIAN KOMUNIKASI MALAYSIA - ZON UTARA (KKMM.400-11/17/132(1))





PROJEK PENYEDIAAN DAN PENYELENGGARAAN POINT OF PRESENCE (POP) FASA 2: HAB INFRASTRUKTUR GENTIAN OPTIK BERHAMPIRAN DENGAN SEKOLAH, KAWASAN PERINDUSTRIAN, PREMIS KERAJAAN DAN KOMUNITI SEKITARNYA OLEH KEMENTERIAN KOMUNIKASI MALAYSIA - ZON UTARA (KKMM.400-11/17/132(1))







PROJEK PENYEDIAAN DAN PENYELENGGARAAN POINT OF PRESENCE (POP) FASA 2: HAB INFRASTRUKTUR GENTIAN OPTIK BERHAMPIRAN DENGAN SEKOLAH, KAWASAN PERINDUSTRIAN, PREMIS KERAJAAN DAN KOMUNITI SEKITARNYA OLEH KEMENTERIAN KOMUNIKASI MALAYSIA - ZON UTARA (KKMM.400-11/17/132(1))









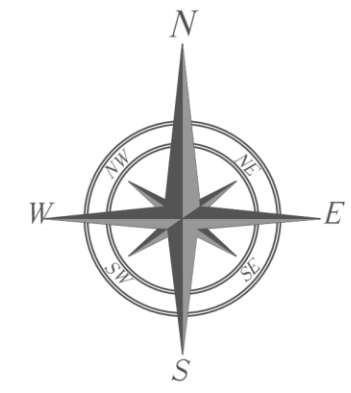
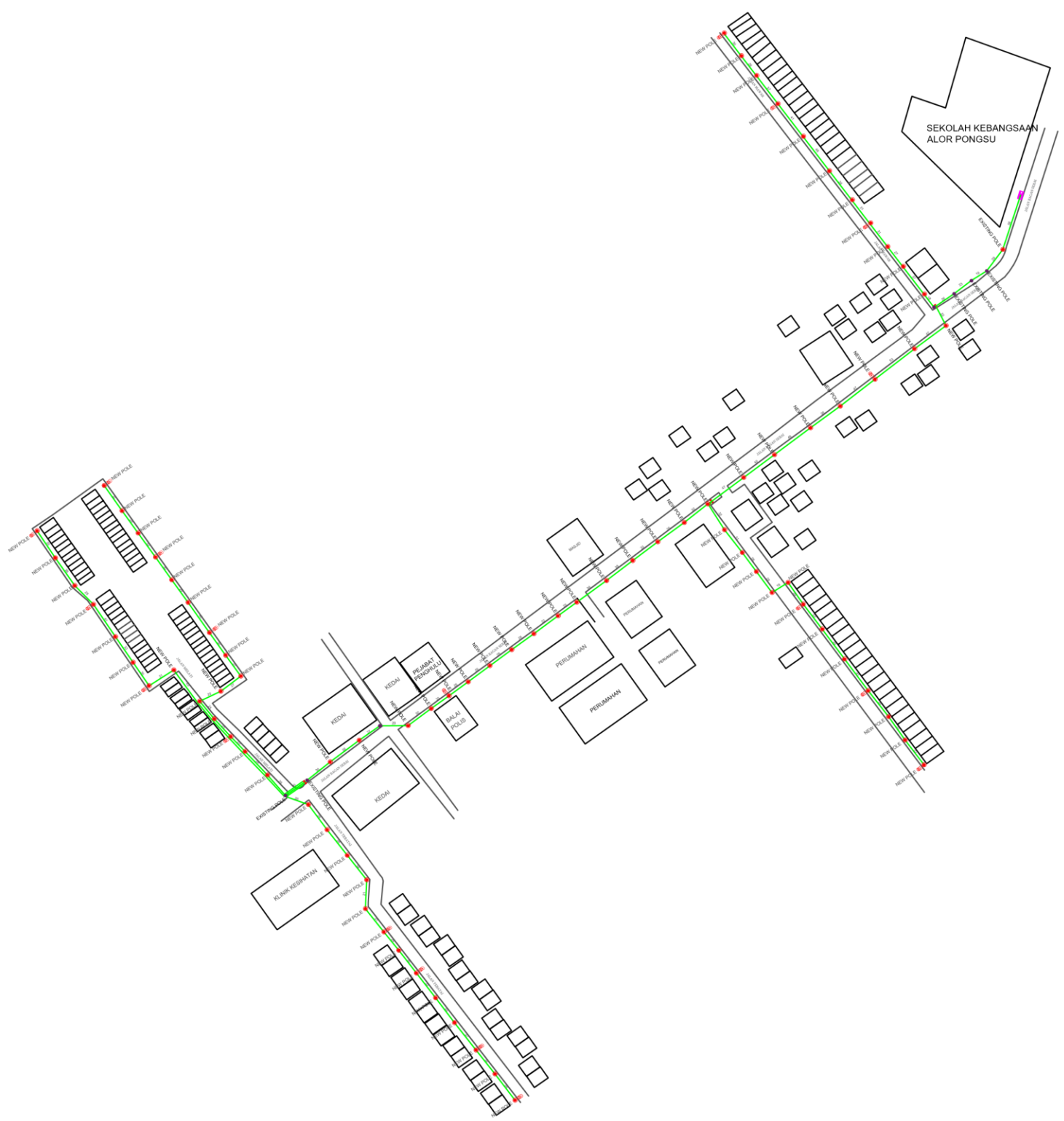


OJEK PENYEDIAAN DAN PENYELENGGARAAN POINT OF PRESENCE (POP) FASA 2: HAB INFRASTRUKTUR GENTIAN OPTIK BERHAMPIRAN DENGAN SEKOLAH, KAWASAN PERINDUSTRIAN, PREMIS KERAJAAN DAN KOMUNITI SEKITARNYA OLEH KEMENTERIAN KOMUNIKASI MALAYSIA - ZON UTARA (KKMM.400-11/17/132(1))



### 3rd Parties Dependencies

No.	Local Council/ Authority	Remark
1	JKR Kerian	
2		
3		
4		
5		
6		



LEGEND	
	12C FOC
	24C FOC
	36C FOC
	48C FOC
	96C FOC
	Installed 1:8 splitter in FDC
	FDP with (1:8) splitter
	Closure
	New Manhole (PIT)
	Installed Pole (7.5M)
	Installed Pole (9m)
	Installed Riser
	Suspension Big
	Suspension Small
	FDC
	New Manhole(JRC7)
	House Number
	Existing TNB Pole
	LOOP
	FDP Boundary
	Tension Small / Tension Big
	Existing Manhole
	Closure NO.
	FDP NO.
	FDC NO.
	MH NO.
	Existing TNB Pole NO.
	New Pole NO.
	Pole Ring

(A) SEE A-A in this page (A)  
 (A) SEE SHEET XXX (A)

KEY PLAN :	OWNER / DEVELOPER: 	MAIN CONTRACTOR: 	SUB-CONTRACTOR: 	PROJECT TITLE: <b>SUPPLY, INSTALLATION AND COMMISSIONING OF FTTX NETWORK INFRASTRUCTURE - POP 2 PROJECT (D-SIDE) - PMU BSRI FOR ABA3001 SK ALOR PONGSU</b>	DRAWING TITLE: <b>PLAN SEKOLAH KEBANGSAAN ALOR PONGSU</b>	Design By : KHAIRUL Drawn By : KHAIRUL Checked By : IZATI	Date : 18/05/2024 Scale : NOT TO SCALE Job Number :
	DRAWING NUMBER : <b>ALLO/AA/008</b>		PROJECT PHASE: <b>ISSUE FOR DESIGN</b>		THIS PRINT AND ITS COPYRIGHT ARE THE PROPERTY OF ALLO TECHNOLOGY SDN BHD	Sheet : <b>1/1</b> Size : <b>A3</b>	