



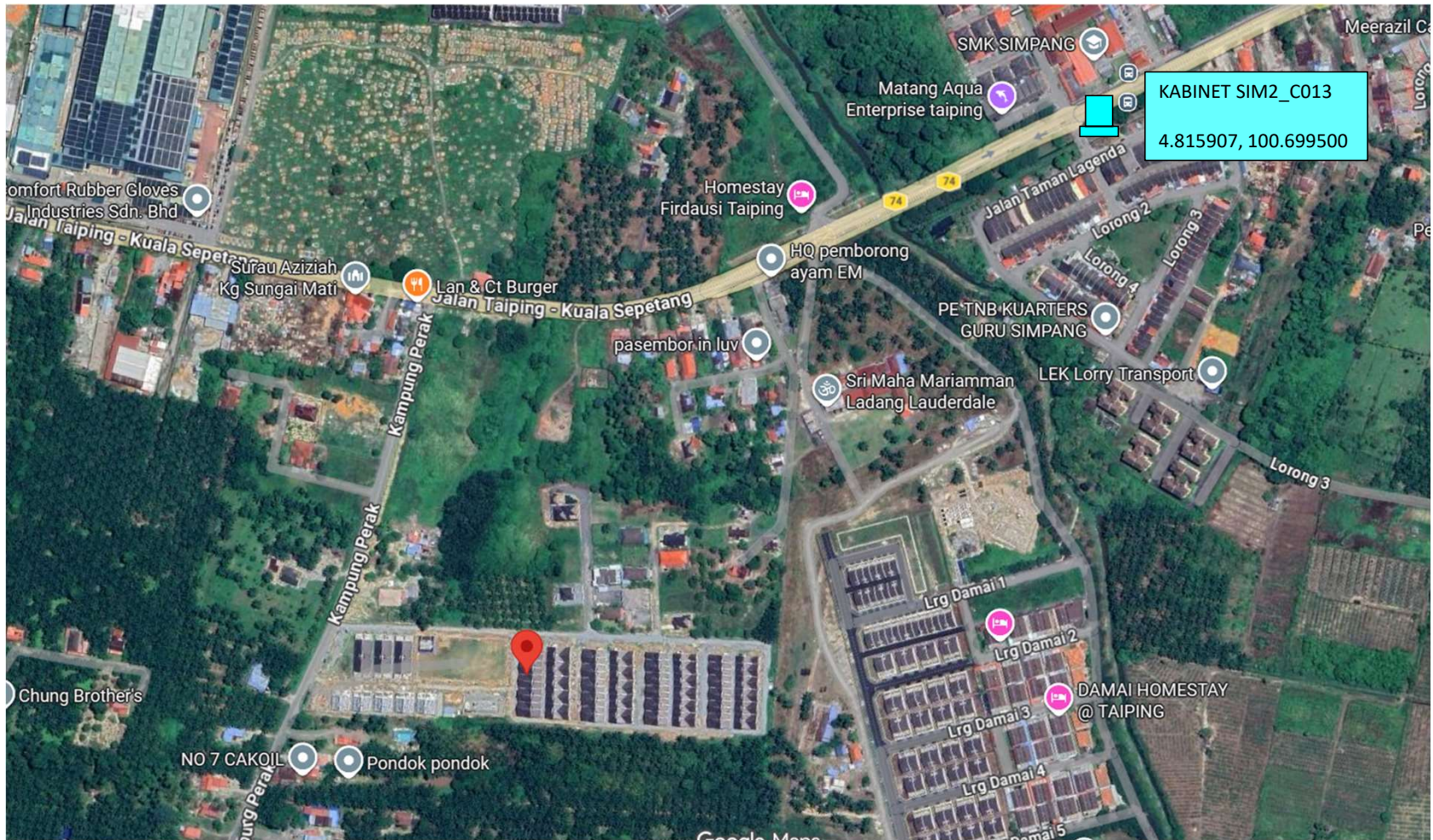
# Technical Proposal for TM Project



<b>Project Description:</b>	SRR FTTH GF SIM2_C013 TAMAN MATANG MURNI
<b>Project Number:</b>	TMNA/261344
<b>TM Node</b>	SIM2
<b>Region</b>	Northern
<b>NE ID</b>	SIM2 C013
<b>Total FTTH Ports</b>	88
<b>Total Property</b>	106
<b>PF (%)</b>	83%
<b>RFSI Date</b>	28 OKTOBER 2026
<b>GPS Coordinate</b>	4.810697, 100.693611

<b>Prepared by:</b>	MUHD ALIF JAZLI BIN JOHARI
<b>Company Name:</b>	PROSERINS TECHNOLOGY SDN BHD
<b>Date:</b>	9 MAY 2026
<b>TP Revision:</b>	0

## 1.1 FDC Location

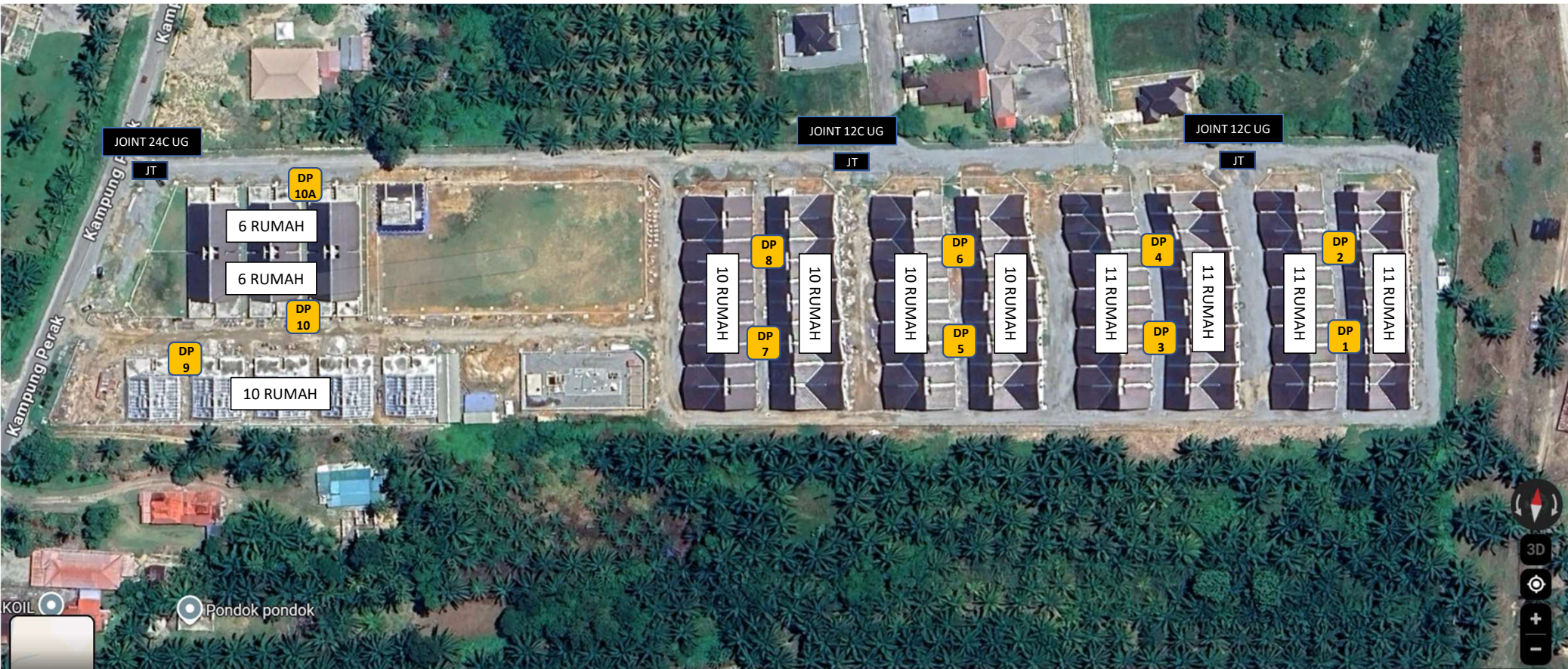


Legend:



FDC

## 2.1 FDP and FOSC Location Plan



Legend:



FDC



FDP

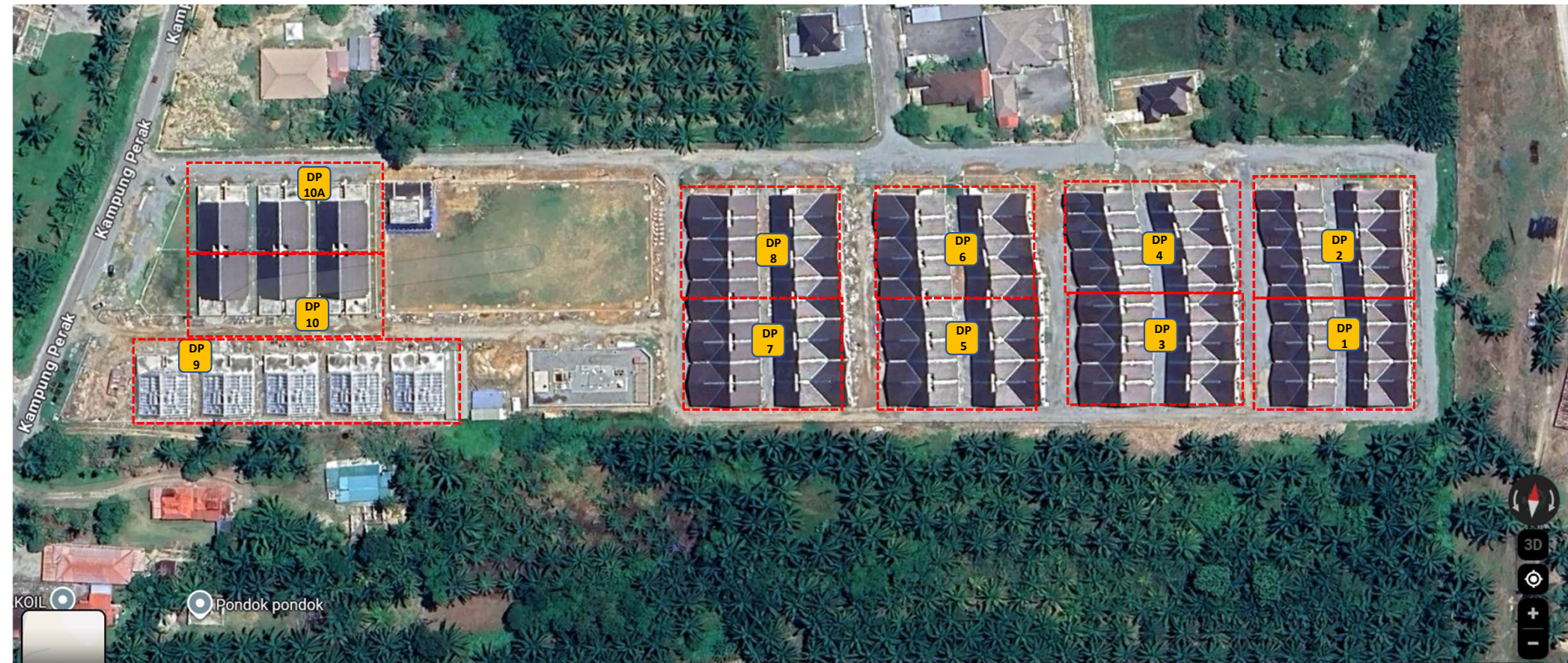


FOSC



POLE

## 2.2 FDP Boundary



Legend:



FDC



FDP

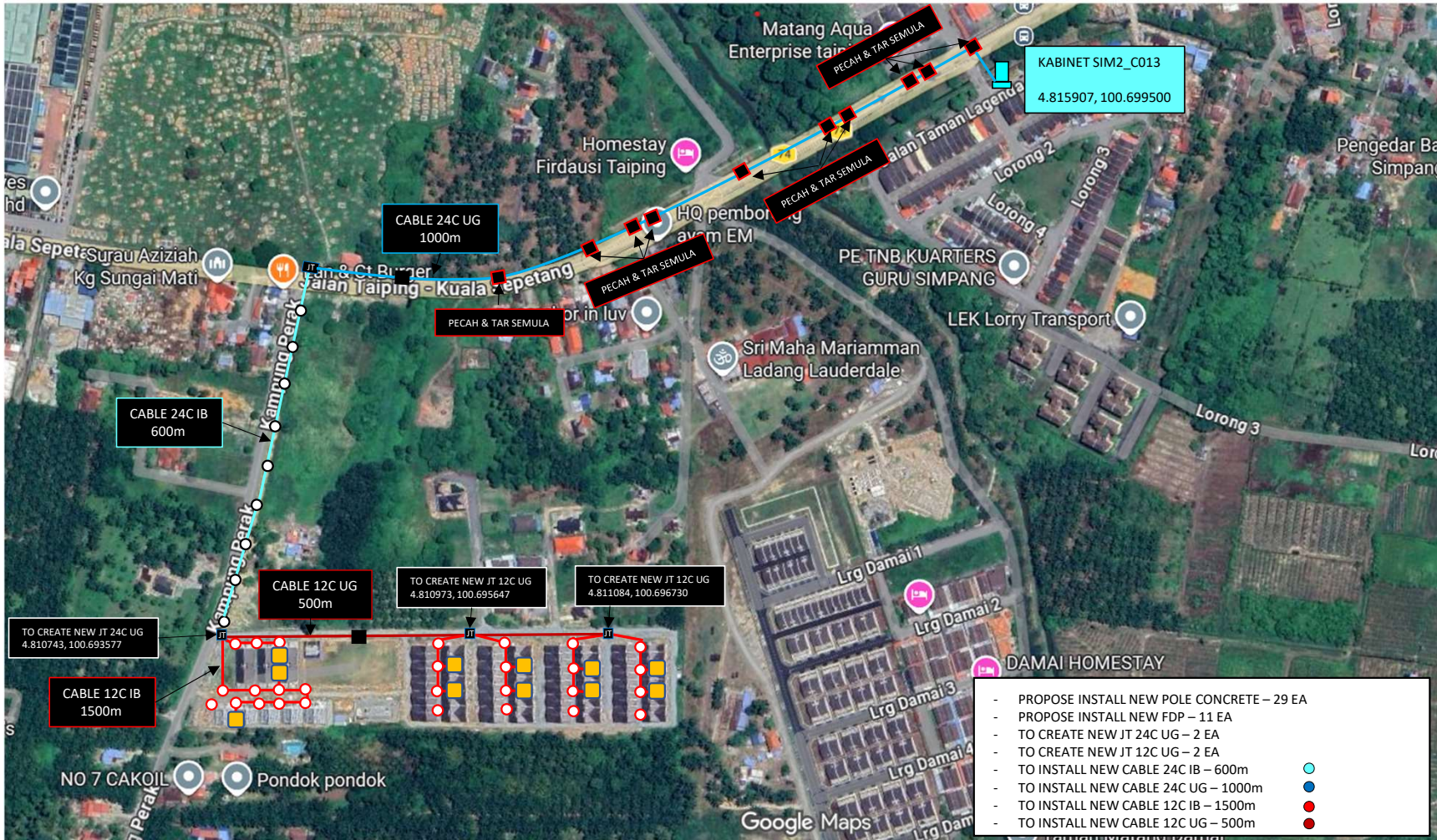


FOSC



POLE

## 2.3 Cable Plan



Legend: FDC FDP JT FOSC EXT POLE NEW POLE MH MH JB30

### 3.1 New Pole Plan



Legend:



FDC



FDP



FOSC



POLE

### 3.2 New Pole details

No	POLE ID	Pole Type	GPS Coordinate
1	1	Concrete Pole 7.5m	4°48'37.73"N 100°41'49.61"E
2	2	Concrete Pole 7.5m	4°48'38.33"N 100°41'49.57"E
3	3	Concrete Pole 7.5m	4°48'38.92"N 100°41'49.49"E
4	4	Concrete Pole 7.5m	4°48'39.48"N 100°41'49.43"E
5	5	Concrete Pole 7.5m	4°48'37.55"N 100°41'47.58"E
6	6	Concrete Pole 7.5m	4°48'38.17"N 100°41'47.51"E
7	7	Concrete Pole 7.5m	4°48'38.76"N 100°41'47.41"E
8	8	Concrete Pole 7.5m	4°48'39.37"N 100°41'47.29"E
9	9	Concrete Pole 7.5m	4°48'37.24"N 100°41'45.69"E
10	10	Concrete Pole 7.5m	4°48'37.85"N 100°41'45.59"E
11	11	Concrete Pole 7.5m	4°48'38.45"N 100°41'45.54"E
12	12	Concrete Pole 7.5m	4°48'39.12"N 100°41'45.43"E
13	13	Concrete Pole 7.5m	4°48'37.00"N 100°41'43.58"E
14	14	Concrete Pole 7.5m	4°48'37.62"N 100°41'43.49"E
15	15	Concrete Pole 7.5m	4°48'38.29"N 100°41'43.41"E
16	16	Concrete Pole 7.5m	4°48'38.95"N 100°41'43.33"E
17	17	Concrete Pole 7.5m	4°48'38.70"N 100°41'39.21"E
18	18	Concrete Pole 7.5m	4°48'38.63"N 100°41'38.60"E
19	19	Concrete Pole 7.5m	4°48'38.56"N 100°41'37.94"E
20	20	Concrete Pole 7.5m	4°48'38.47"N 100°41'37.32"E

### 3.2 New Pole details

No	POLE ID	Pole Type	GPS Coordinate
21	21	Concrete Pole 7.5m	4°48'37.10"N 100°41'36.88"E
22	22	Concrete Pole 7.5m	4°48'37.04"N 100°41'37.31"E
23	23	Concrete Pole 7.5m	4°48'37.13"N 100°41'38.14"E
24	24	Concrete Pole 7.5m	4°48'37.18"N 100°41'38.76"E
25	25	Concrete Pole 7.5m	4°48'37.27"N 100°41'39.42"E
26	26	Concrete Pole 7.5m	4°48'36.91"N 100°41'39.55"E
27	27	Concrete Pole 7.5m	4°48'36.83"N 100°41'38.89"E
28	28	Concrete Pole 7.5m	4°48'36.74"N 100°41'38.22"E
29	29	Concrete Pole 7.5m	4°48'36.71"N 100°41'37.52"E
30	30	Concrete Pole 7.5m	4°48'36.60"N 100°41'36.87"E

### 3.3 New Pole Illustration



### 3.3 New Pole Illustration



# KERJA CIVIL – PECAH & TAR SEMULA MANHOLE



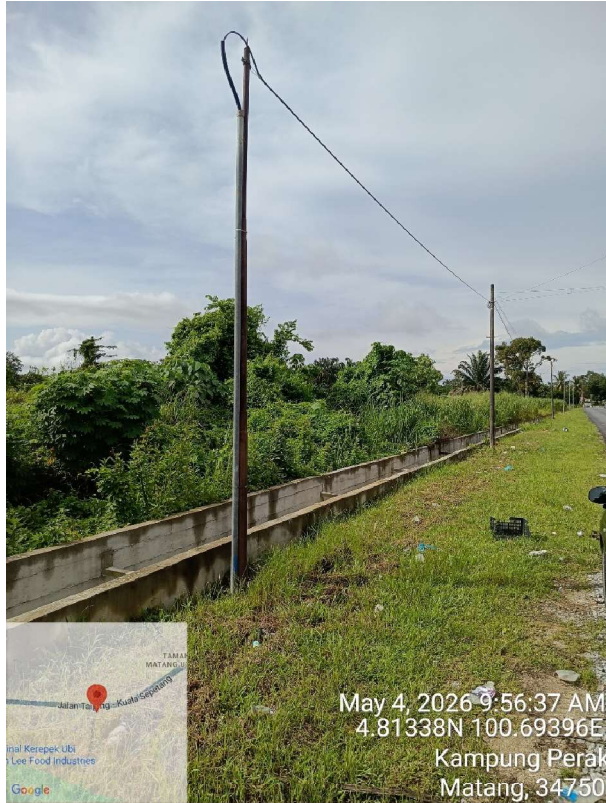
**PHOTOS ON-SITE**



**KABINET SIM2\_C013**



# PHOTOS ON-SITE



END OF TECHNICAL PROPOSAL