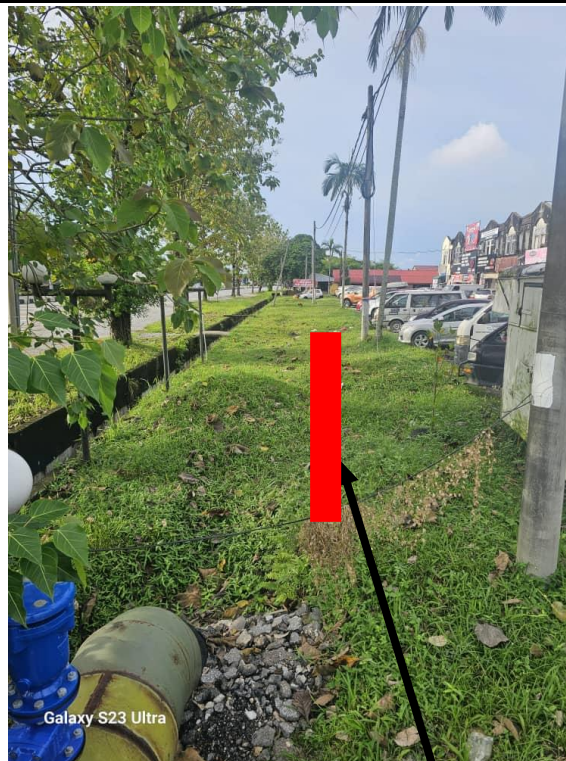
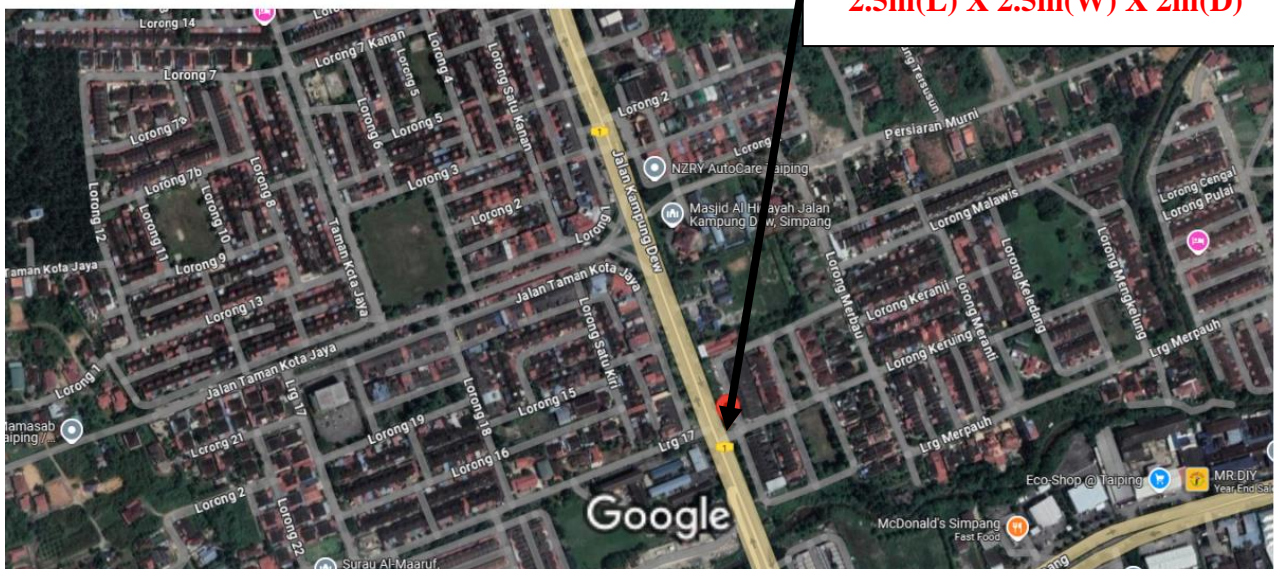


### SITE LOCATION AND MAPS PHOTO

<b>Client</b>	GAS MALAYSIA DISTRIBUTION SDN BHD
<b>Project Title</b>	PIPELINE INTEGRITY INSPECTION AND ASSESSMENT WORKS FOR GAS DISTRIBUTION MALAYSIA SDN BHD
<b>Location 1</b>	Jalan Kampung Dew (GPS No.: 4°49'25.2"N 100°42'16.5"E)(4.8236667,100.7045833)



**Excavation Area  
2.5m(L) X 2.5m(W) X 2m(D)**



**SITE LOCATION AND MAPS PHOTO**

<b>Client</b>	GAS MALAYSIA DISTRIBUTION SDN BHD
<b>Project Title</b>	PIPELINE INTEGRITY INSPECTION AND ASSESSMENT WORKS FOR GAS DISTRIBUTION MALAYSIA SDN BHD
<b>Location 2</b>	Jalan Kampung Dew (GPS No.: 4°50'26.6"N 100°41'49.9"E)(4.840722,100.697194)



**Excavation Area  
2.5m(L) X 2.5m(W) X 2m(D)**



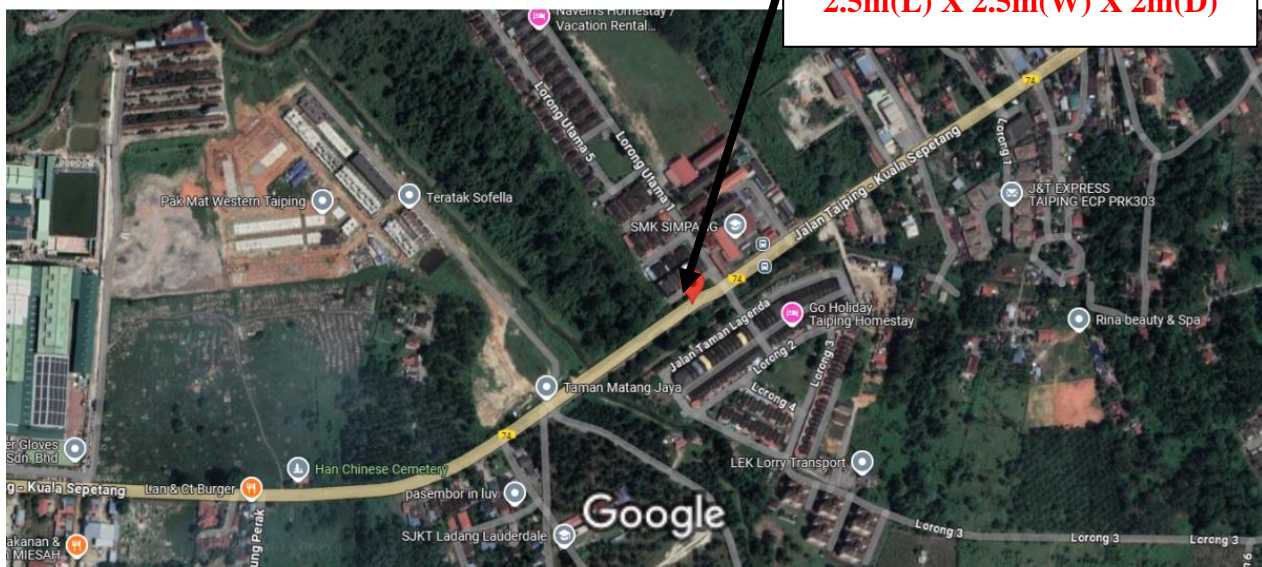


### SITE LOCATION AND MAPS PHOTO

<b>Client</b>	GAS MALAYSIA DISTRIBUTION SDN BHD
<b>Project Title</b>	PIPELINE INTEGRITY INSPECTION AND ASSESSMENT WORKS FOR GAS DISTRIBUTION MALAYSIA SDN BHD
<b>Location 3</b>	Jalan Taiping – Kuala Sepetang (GPS No.: 4°48'57.3"N 100°41'56.0"E)(4.815917,100.698889)



**Excavation Area  
2.5m(L) X 2.5m(W) X 2m(D)**



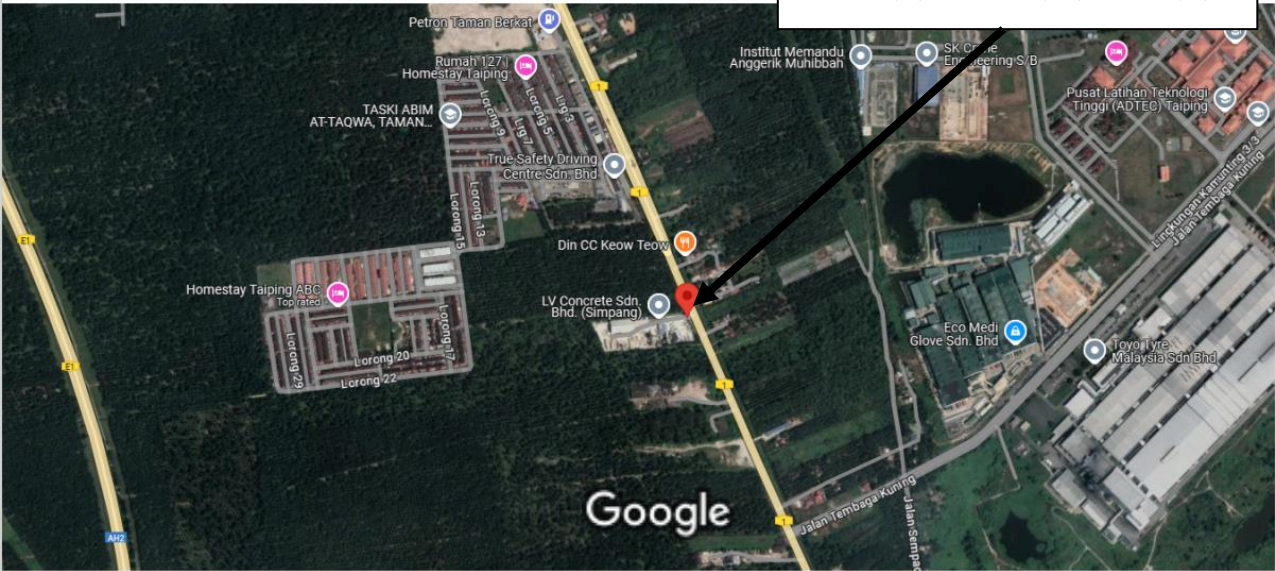
**SITE LOCATION AND MAPS PHOTO**

<b>Client</b>	GAS MALAYSIA DISTRIBUTION SDN BHD
<b>Project Title</b>	PIPELINE INTEGRITY INSPECTION AND ASSESSMENT WORKS FOR GAS DISTRIBUTION MALAYSIA SDN BHD
<b>Location 4</b>	Jalan Ipoh – Butterworth (GPS No.: 4°51'39.8"N 100°41'17.1"E)(4.861056,100.688083)



Galaxy S23 Ultra

**Excavation Area  
2.5m(L) X 2.5m(W) X 2m(D)**



**SITE LOCATION AND MAPS PHOTO**

<b>Client</b>	GAS MALAYSIA DISTRIBUTION SDN BHD
<b>Project Title</b>	PIPELINE INTEGRITY INSPECTION AND ASSESSMENT WORKS FOR GAS DISTRIBUTION MALAYSIA SDN BHD
<b>Location 5</b>	Jalan Ipoh – Butterworth (GPS No.: 4°52'35.3"N 100°40'51.7"E)(4.876472,100.681028)



**Excavation Area  
2.5m(L) X 2.5m(W) X 2m(D)**

