

TECHNICAL PROPOSAL

POP2 ABA4047 SEKOLAH KEBANGSAAN CHENEIN (D-SIDE)

Company Name : AraTimur Sdn Bhd
Company Address : A-08-13, 8th Floor, Block A, Radia Office, Persiaran Singgahsana, 40150
 Bukit Jelutong, Shah Alam, Selangor.
Prepared By : Muhammad Danieal Adikha Bin Zaidi
Date : 30/11/2024



Starting Point

Site / Boundary Name : Sekolah Kebangsaan Chenein
 Address : 31100 Sungai Siput, Perak.
 District : Kuala Kangsar
 Postcode : 31100
 State : Perak
 GPS Coordinate : 4.954251, 101.143967
 LRD : A

End Point

Site / Boundary Name : Jalan Rafflesia, Desa Perlop 3
 Address : 31100 Sungai Siput, Perak.
 District : Kuala Kangsar
 Postcode : 31100
 State : Perak
 GPS Coordinate : 4.9617033, 101.135366
 LRD : B



PROJEK PENYEDIAAN DAN PENYELENGGARAAN POINT OF PRESENCE (POP)
 FASA 2: HAB INFRASTRUKTUR GENTIAN OPTIK BERHAMPIRAN DENGAN
 SEKOLAH, KAWASAN PERINDUSTRIAN, PREMIS KERAJAAN DAN KOMUNITI
 SEKITARNYA OLEH KEMENTERIAN KOMUNIKASI MALAYSIA - ZON UTARA
 (KKMM.400-11/17/132(1))



1.0 WORK SUMMARY

NO	PROPOSED DISTANCE AND METHOD	UNIT	QUANTITY
1	Horizontal Directional Drilling (HDD)	m	0
2	Carriage Way Open Trench (CW)	m	0
3	Grass Verge Open Trenching (GV)	m	0
4	Micro Trenching (MT)	m	0
Total			0

NO	OTHER INFORMATION	UNIT	QUANTITY
1	Installation of Short Span ADSS Fibre Cables	m	4196
2	Install New Pole	ea	114
3	Install New JRC7 Manhole	ea	0
4	Install GI Riser 50mm	ea	0
5	Install Fiber Distribution Point	ea	17
6	Install Joint Closure	ea	7
7	Estimated Time Required for Completion	days	30



PROJEK PENYEDIAAN DAN PENYELENGGARAAN POINT OF PRESENCE (POP)
FASA 2: HAB INFRASTRUKTUR GENTIAN OPTIK BERHAMPIRAN DENGAN
SEKOLAH, KAWASAN PERINDUSTRIAN, PREMIS KERAJAAN DAN KOMUNITI
SEKITARNYA OLEH KEMENTERIAN KOMUNIKASI MALAYSIA - ZON UTARA
(KKMM.400-11/17/132(1))



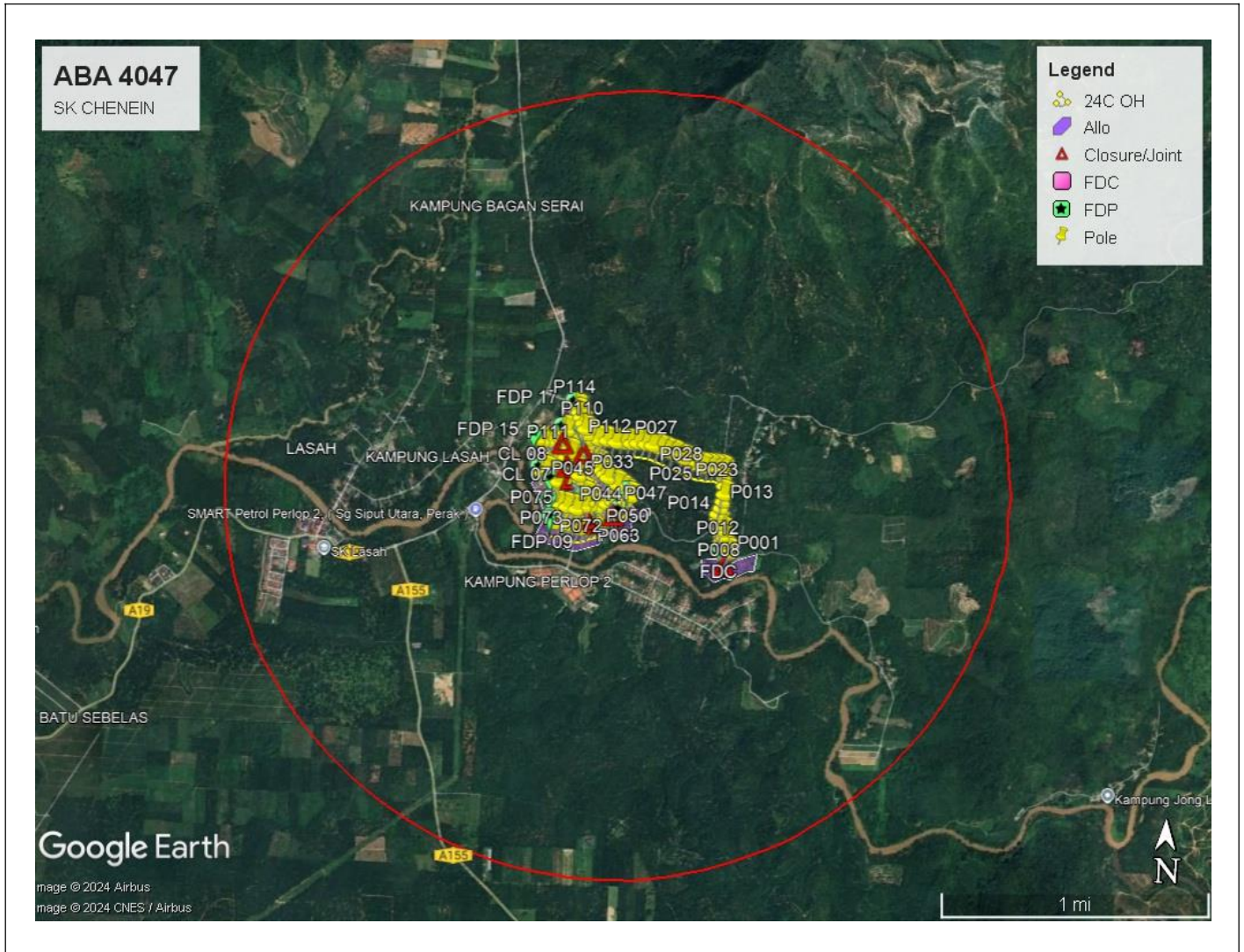
2.0 LOCAL AUTHORITY SUMMARY

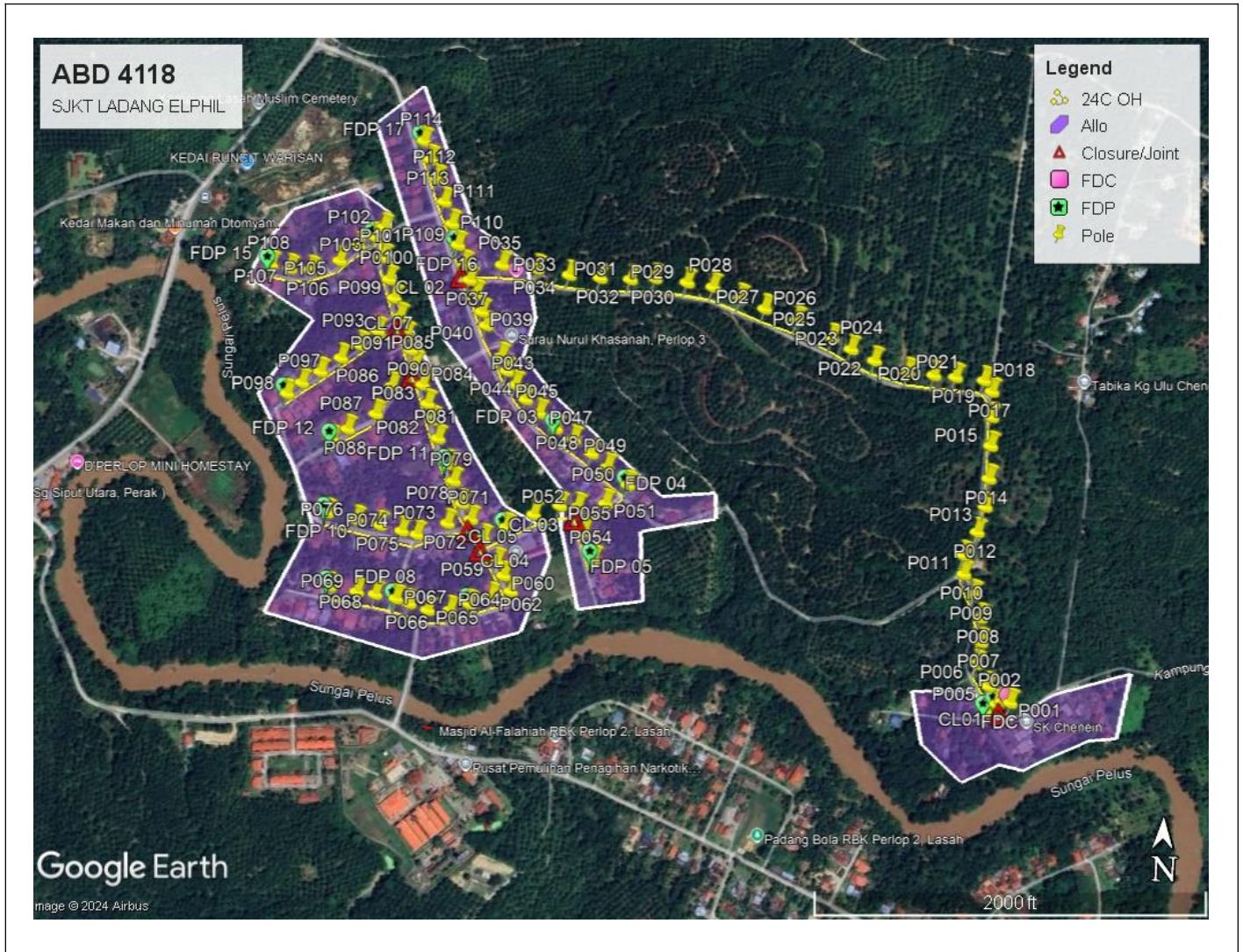
Daerah Kuala Kangsar

NO	ITEMS	Owner	Quantity	Distance (m)
1	HDD	JKR	-	-
		Majlis	-	-
		Estate / Private Land	-	-
2	New Pole	JKR	-	-
		Majlis	114	4196
		Estate / Private Land	-	-
Total Distance (m)				4196

3.0 SITE PLAN (KMZ)

3.1 Overview Site Area

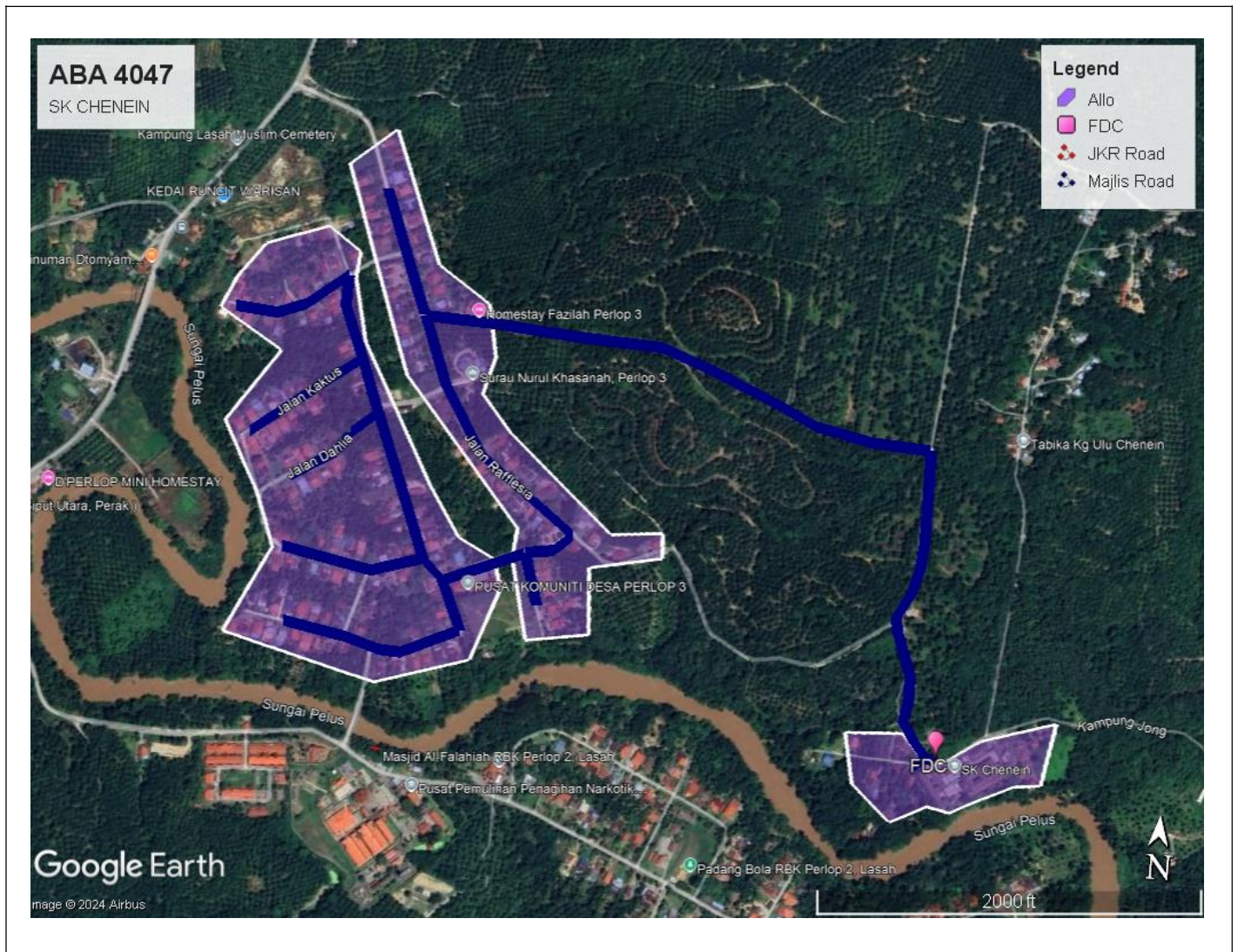




3.2 Site Plan - KMZ Routing (All Local Authority)

Red Colour - JKR Road

Blue Colour - Majlis Road



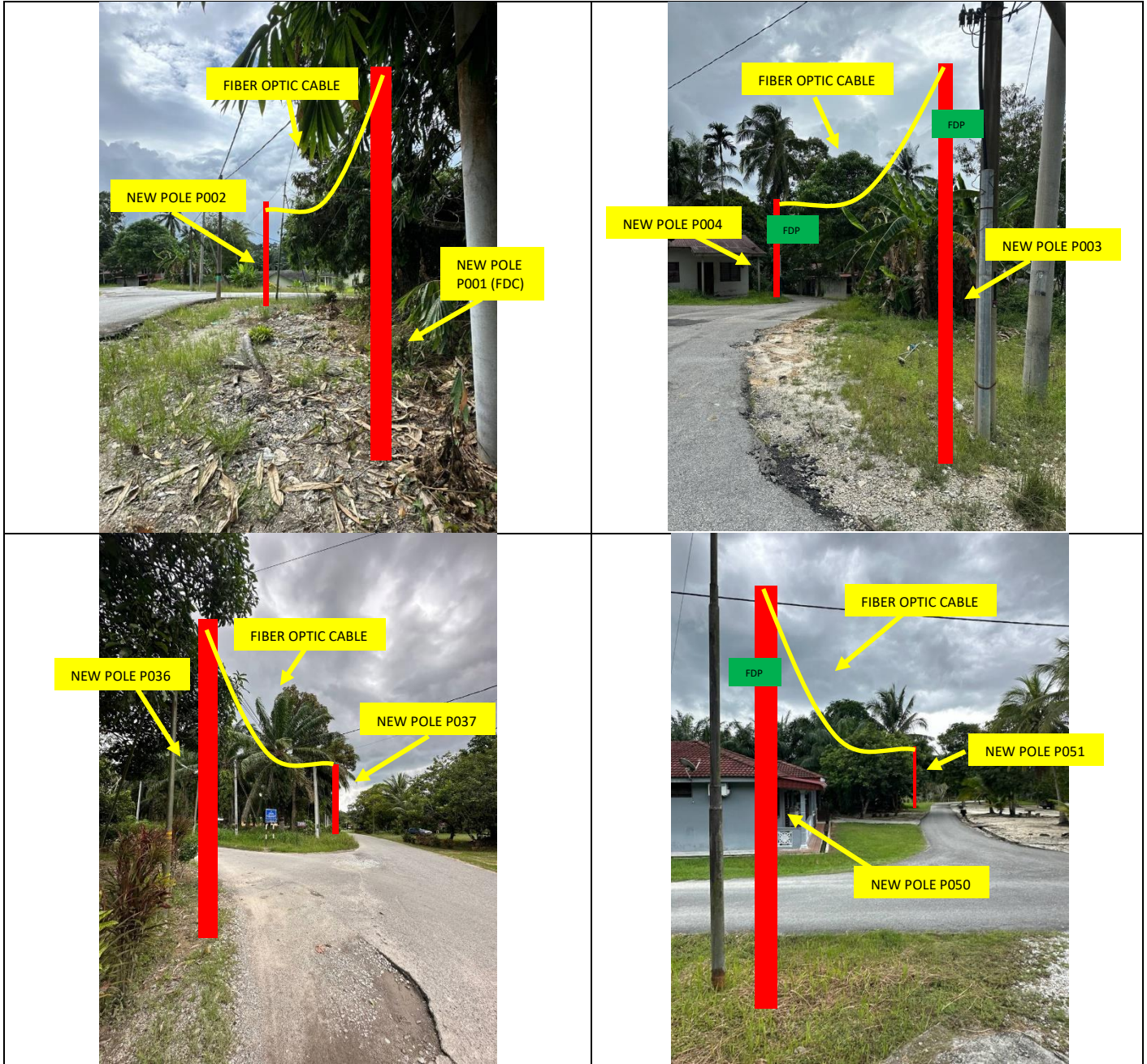
4.0 PROPOSED NEW POLE

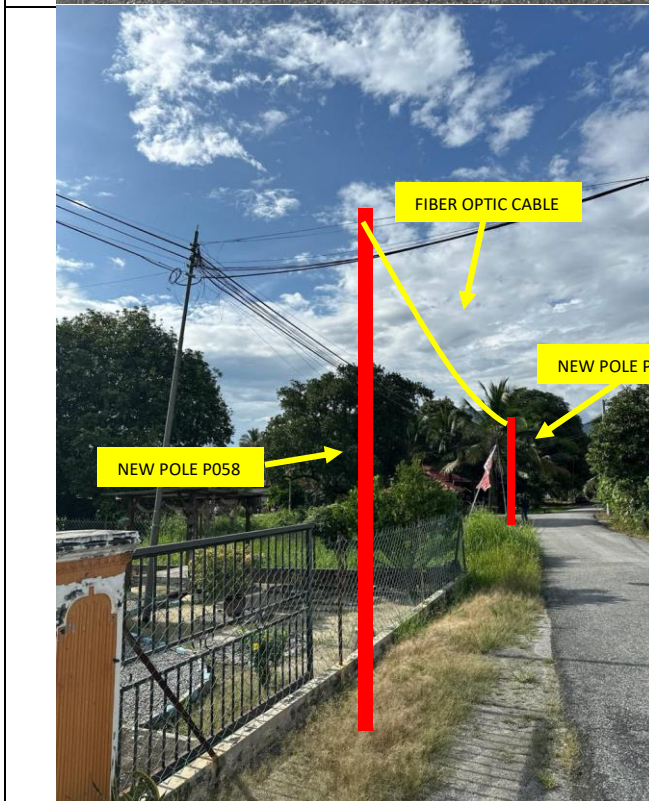
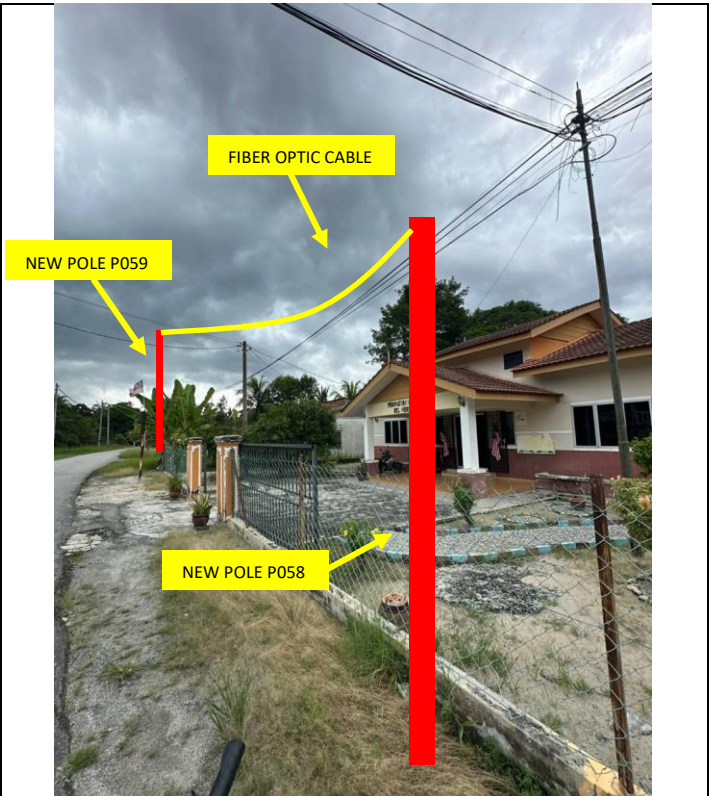
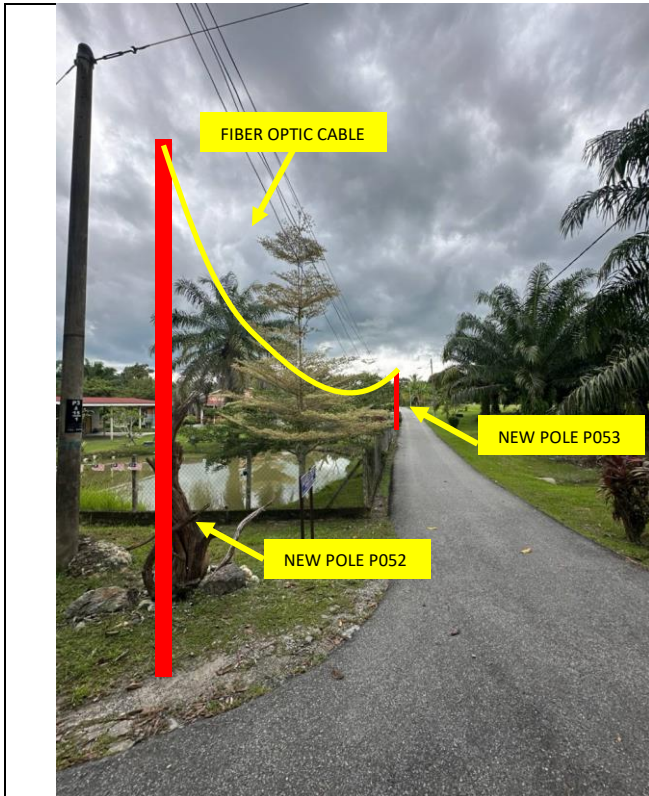
Proposed New Pole Coordinate					
No.	Pole Number	Distance (m)	Latitude	Longitude	Local Authority
1	P001 (FDC)	0	4.954251	101.143967	Majlis Perbandaran Kuala Kangsar
2	P002	13	4.954261	101.143852	Majlis Perbandaran Kuala Kangsar
3	P003	10	4.954222	101.143778	Majlis Perbandaran Kuala Kangsar
4	P004	20	4.954117	101.143646	Majlis Perbandaran Kuala Kangsar
5	P005	33	4.954468	101.143647	Majlis Perbandaran Kuala Kangsar
6	P006	40	4.954772	101.143458	Majlis Perbandaran Kuala Kangsar
7	P007	36	4.955085	101.143505	Majlis Perbandaran Kuala Kangsar
8	P008	38	4.955424	101.143480	Majlis Perbandaran Kuala Kangsar
9	P009	39	4.955746	101.143367	Majlis Perbandaran Kuala Kangsar
10	P010	36	4.956022	101.143217	Majlis Perbandaran Kuala Kangsar
11	P011	30	4.956286	101.143197	Majlis Perbandaran Kuala Kangsar
12	P012	42	4.956617	101.143370	Majlis Perbandaran Kuala Kangsar
13	P013	42	4.956976	101.143460	Majlis Perbandaran Kuala Kangsar
14	P014	44	4.957368	101.143492	Majlis Perbandaran Kuala Kangsar
15	P015	52	4.957827	101.143497	Majlis Perbandaran Kuala Kangsar
16	P016	45	4.958229	101.143495	Majlis Perbandaran Kuala Kangsar
17	P017	40	4.958583	101.143481	Majlis Perbandaran Kuala Kangsar
18	P018	22	4.958730	101.143363	Majlis Perbandaran Kuala Kangsar
19	P019	46	4.958758	101.142958	Majlis Perbandaran Kuala Kangsar
20	P020	35	4.958770	101.142651	Majlis Perbandaran Kuala Kangsar
21	P021	42	4.958791	101.142277	Majlis Perbandaran Kuala Kangsar
22	P022	56	4.958924	101.141800	Majlis Perbandaran Kuala Kangsar
23	P023	41	4.959068	101.141466	Majlis Perbandaran Kuala Kangsar
24	P024	35	4.959206	101.141189	Majlis Perbandaran Kuala Kangsar
25	P025	60	4.959425	101.140687	Majlis Perbandaran Kuala Kangsar
26	P026	53	4.959564	101.140235	Majlis Perbandaran Kuala Kangsar
27	P027	42	4.959689	101.139884	Majlis Perbandaran Kuala Kangsar
28	P028	46	4.959826	101.139500	Majlis Perbandaran Kuala Kangsar
29	P029	41	4.959877	101.139141	Majlis Perbandaran Kuala Kangsar
30	P030	51	4.959920	101.138693	Majlis Perbandaran Kuala Kangsar
31	P031	39	4.959892	101.138352	Majlis Perbandaran Kuala Kangsar
32	P032	48	4.959897	101.137929	Majlis Perbandaran Kuala Kangsar
33	P033	49	4.959920	101.137496	Majlis Perbandaran Kuala Kangsar
34	P034	52	4.959987	101.137040	Majlis Perbandaran Kuala Kangsar
35	P035	55	4.960019	101.136551	Majlis Perbandaran Kuala Kangsar
36	P036	60	4.960000	101.136020	Majlis Perbandaran Kuala Kangsar

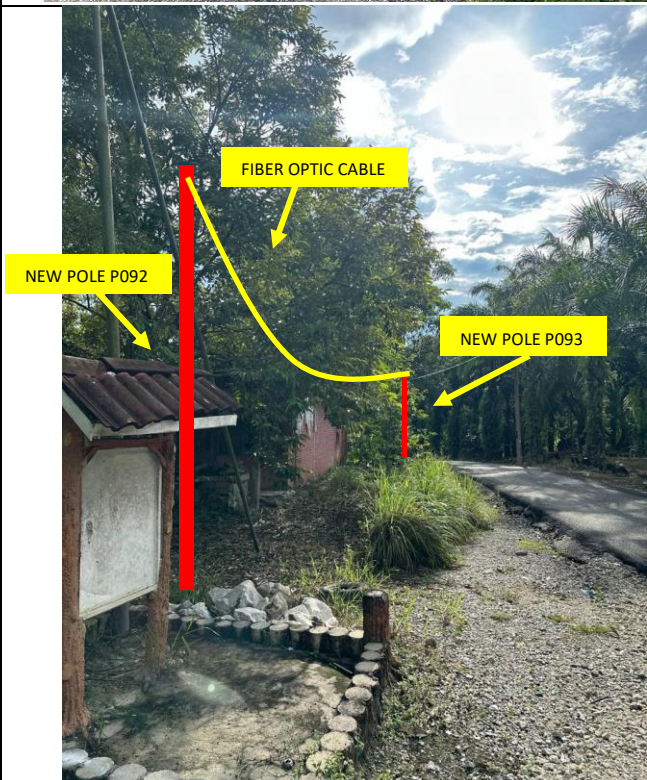
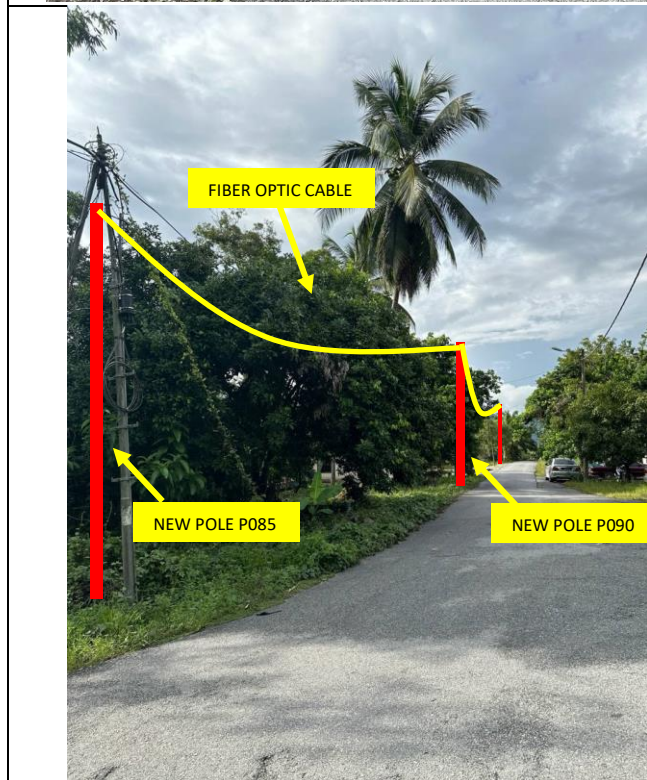
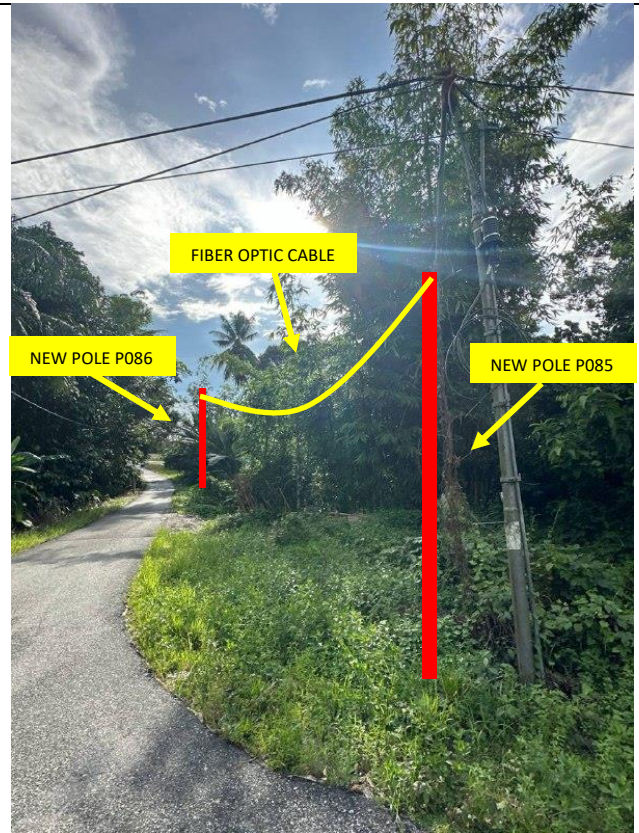
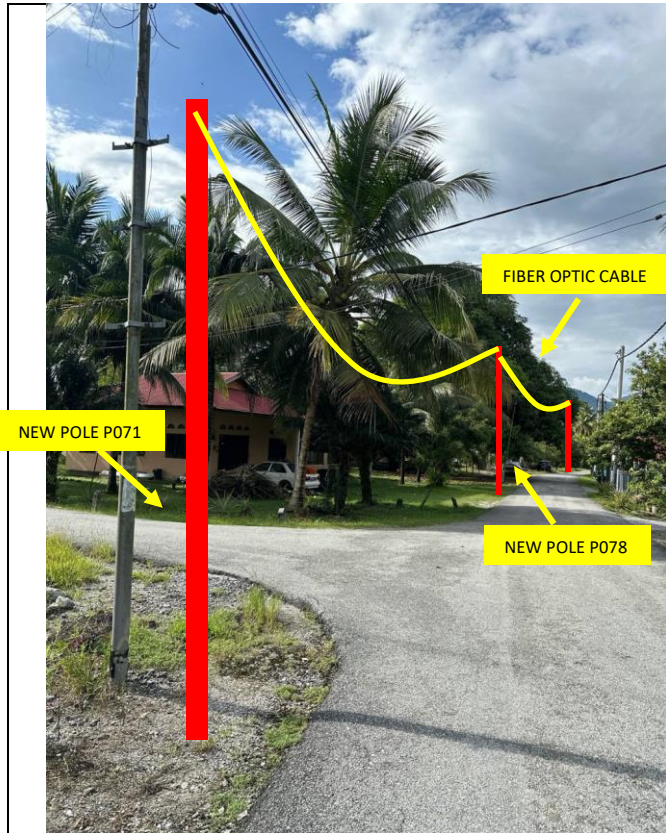
37	P037	26	4.959788	101.136106	Majlis Perbandaran Kuala Kangsar
38	P038	24	4.959600	101.136202	Majlis Perbandaran Kuala Kangsar
39	P039	30	4.959354	101.136293	Majlis Perbandaran Kuala Kangsar
40	P040	23	4.959169	101.136362	Majlis Perbandaran Kuala Kangsar
41	P041	55	4.958742	101.136593	Majlis Perbandaran Kuala Kangsar
42	P042	24	4.958550	101.136683	Majlis Perbandaran Kuala Kangsar
43	P043	25	4.958361	101.136810	Majlis Perbandaran Kuala Kangsar
44	P044	28	4.958163	101.136965	Majlis Perbandaran Kuala Kangsar
45	P045	31	4.957980	101.137167	Majlis Perbandaran Kuala Kangsar
46	P046	36	4.957777	101.137408	Majlis Perbandaran Kuala Kangsar
47	P047	34	4.957634	101.137667	Majlis Perbandaran Kuala Kangsar
48	P048	36	4.957452	101.137927	Majlis Perbandaran Kuala Kangsar
49	P049	33	4.957271	101.138157	Majlis Perbandaran Kuala Kangsar
50	P050	43	4.957038	101.138454	Majlis Perbandaran Kuala Kangsar
51	P051	46	4.956765	101.138155	Majlis Perbandaran Kuala Kangsar
52	P052	45	4.956697	101.137766	Majlis Perbandaran Kuala Kangsar
53	P053	40	4.956360	101.137867	Majlis Perbandaran Kuala Kangsar
54	P054	47	4.955981	101.138021	Majlis Perbandaran Kuala Kangsar
55	P055	28	4.956702	101.137515	Majlis Perbandaran Kuala Kangsar
56	P056	43	4.956562	101.137155	Majlis Perbandaran Kuala Kangsar
57	P057	48	4.956365	101.136778	Majlis Perbandaran Kuala Kangsar
58	P058	41	4.956194	101.136464	Majlis Perbandaran Kuala Kangsar
59	P059	42	4.955877	101.136665	Majlis Perbandaran Kuala Kangsar
60	P060	25	4.955685	101.136770	Majlis Perbandaran Kuala Kangsar
61	P061	28	4.955470	101.136880	Majlis Perbandaran Kuala Kangsar
62	P062	32	4.955382	101.136613	Majlis Perbandaran Kuala Kangsar
63	P063	37	4.955267	101.136308	Majlis Perbandaran Kuala Kangsar
64	P064	33	4.955166	101.136042	Majlis Perbandaran Kuala Kangsar
65	P065	36	4.955155	101.135731	Majlis Perbandaran Kuala Kangsar
66	P066	31	4.955237	101.135470	Majlis Perbandaran Kuala Kangsar
67	P067	22	4.955297	101.135281	Majlis Perbandaran Kuala Kangsar
68	P068	35	4.955344	101.134987	Majlis Perbandaran Kuala Kangsar
69	P069	30	4.955368	101.134730	Majlis Perbandaran Kuala Kangsar
70	P070	44	4.955421	101.134342	Majlis Perbandaran Kuala Kangsar
71	P071	36	4.956455	101.136278	Majlis Perbandaran Kuala Kangsar
72	P072	39	4.956382	101.135953	Majlis Perbandaran Kuala Kangsar
73	P073	51	4.956205	101.135534	Majlis Perbandaran Kuala Kangsar
74	P074	28	4.956247	101.135319	Majlis Perbandaran Kuala Kangsar
75	P075	38	4.956312	101.135008	Majlis Perbandaran Kuala Kangsar
76	P076	38	4.956369	101.134676	Majlis Perbandaran Kuala Kangsar
77	P077	48	4.956451	101.134253	Majlis Perbandaran Kuala Kangsar
78	P078	29	4.956667	101.136145	Majlis Perbandaran Kuala Kangsar

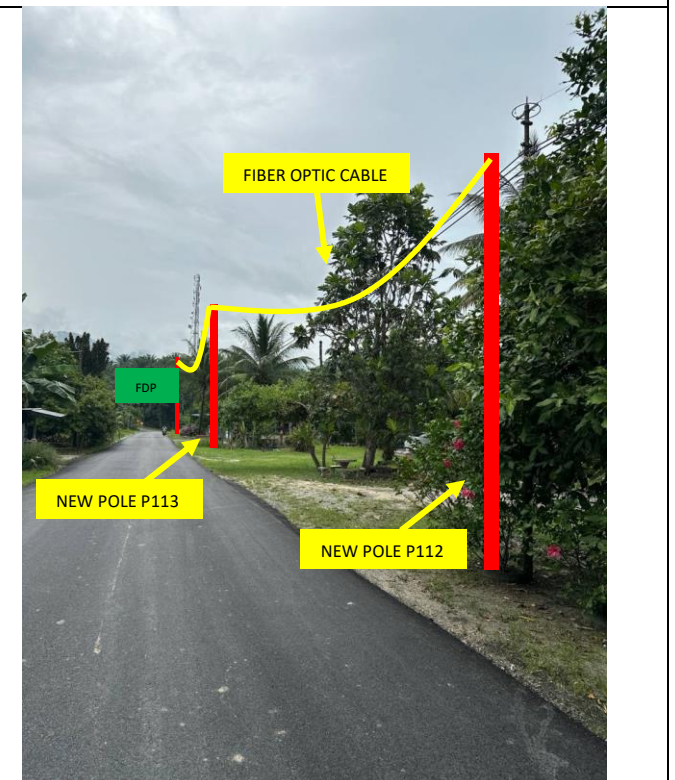
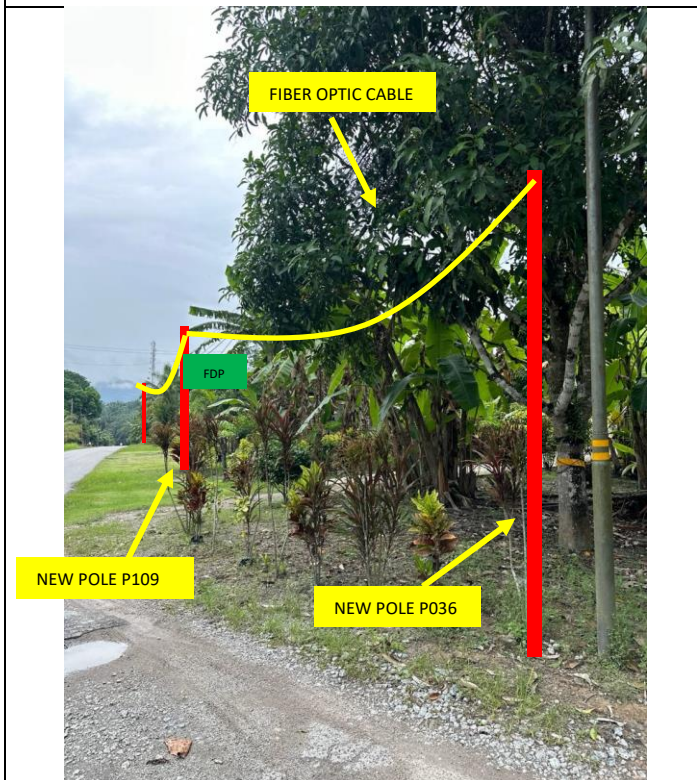
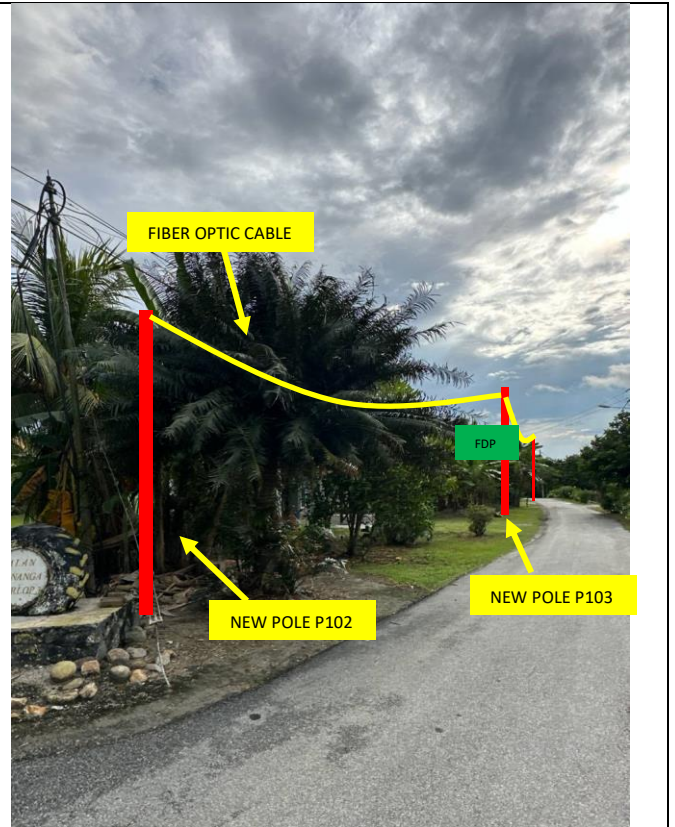
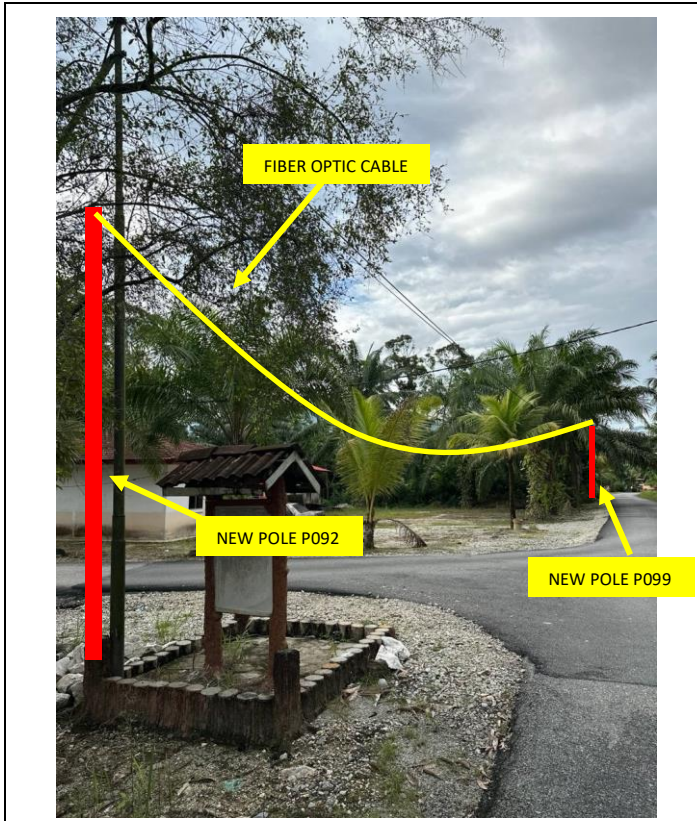
79	P079	39	4.956976	101.136012	Majlis Perbandaran Kuala Kangsar
80	P080	29	4.957209	101.135914	Majlis Perbandaran Kuala Kangsar
81	P081	44	4.957561	101.135763	Majlis Perbandaran Kuala Kangsar
82	P082	33	4.957816	101.135671	Majlis Perbandaran Kuala Kangsar
83	P083	28	4.958038	101.135595	Majlis Perbandaran Kuala Kangsar
84	P084	32	4.958299	101.135512	Majlis Perbandaran Kuala Kangsar
85	P085	35	4.958583	101.135391	Majlis Perbandaran Kuala Kangsar
86	P086	50	4.958260	101.135079	Majlis Perbandaran Kuala Kangsar
87	P087	51	4.957862	101.134872	Majlis Perbandaran Kuala Kangsar
88	P088	51	4.957631	101.134489	Majlis Perbandaran Kuala Kangsar
89	P089	30	4.957479	101.134275	Majlis Perbandaran Kuala Kangsar
90	P090	14	4.958777	101.135323	Majlis Perbandaran Kuala Kangsar
91	P091	25	4.958979	101.135247	Majlis Perbandaran Kuala Kangsar
92	P092	32	4.959231	101.135146	Majlis Perbandaran Kuala Kangsar
93	P093	41	4.959024	101.134843	Majlis Perbandaran Kuala Kangsar
94	P094	36	4.958814	101.134601	Majlis Perbandaran Kuala Kangsar
95	P095	38	4.958623	101.134340	Majlis Perbandaran Kuala Kangsar
96	P096	40	4.958415	101.134065	Majlis Perbandaran Kuala Kangsar
97	P097	34	4.958251	101.133812	Majlis Perbandaran Kuala Kangsar
98	P098	31	4.958087	101.133612	Majlis Perbandaran Kuala Kangsar
99	P099	31	4.959491	101.135054	Majlis Perbandaran Kuala Kangsar
100	P100	31	4.959751	101.134967	Majlis Perbandaran Kuala Kangsar
101	P101	37	4.960051	101.134876	Majlis Perbandaran Kuala Kangsar
102	P102	48	4.960470	101.134862	Majlis Perbandaran Kuala Kangsar
103	P103	20	4.960335	101.134746	Majlis Perbandaran Kuala Kangsar
104	P104	32	4.960195	101.134514	Majlis Perbandaran Kuala Kangsar
105	P105	39	4.959981	101.134259	Majlis Perbandaran Kuala Kangsar
106	P106	50	4.959832	101.133851	Majlis Perbandaran Kuala Kangsar
107	P107	33	4.959839	101.133565	Majlis Perbandaran Kuala Kangsar
108	P108	32	4.959880	101.133300	Majlis Perbandaran Kuala Kangsar
109	P109	33	4.960266	101.135918	Majlis Perbandaran Kuala Kangsar
110	P110	35	4.960556	101.135824	Majlis Perbandaran Kuala Kangsar
111	P111	37	4.960858	101.135702	Majlis Perbandaran Kuala Kangsar
112	P112	39	4.961176	101.135578	Majlis Perbandaran Kuala Kangsar
113	P113	33	4.961449	101.135470	Majlis Perbandaran Kuala Kangsar
114	P114	32	4.961703	101.135366	Majlis Perbandaran Kuala Kangsar

5.0 SITE PHOTOS - PROPOSED NEW POLE









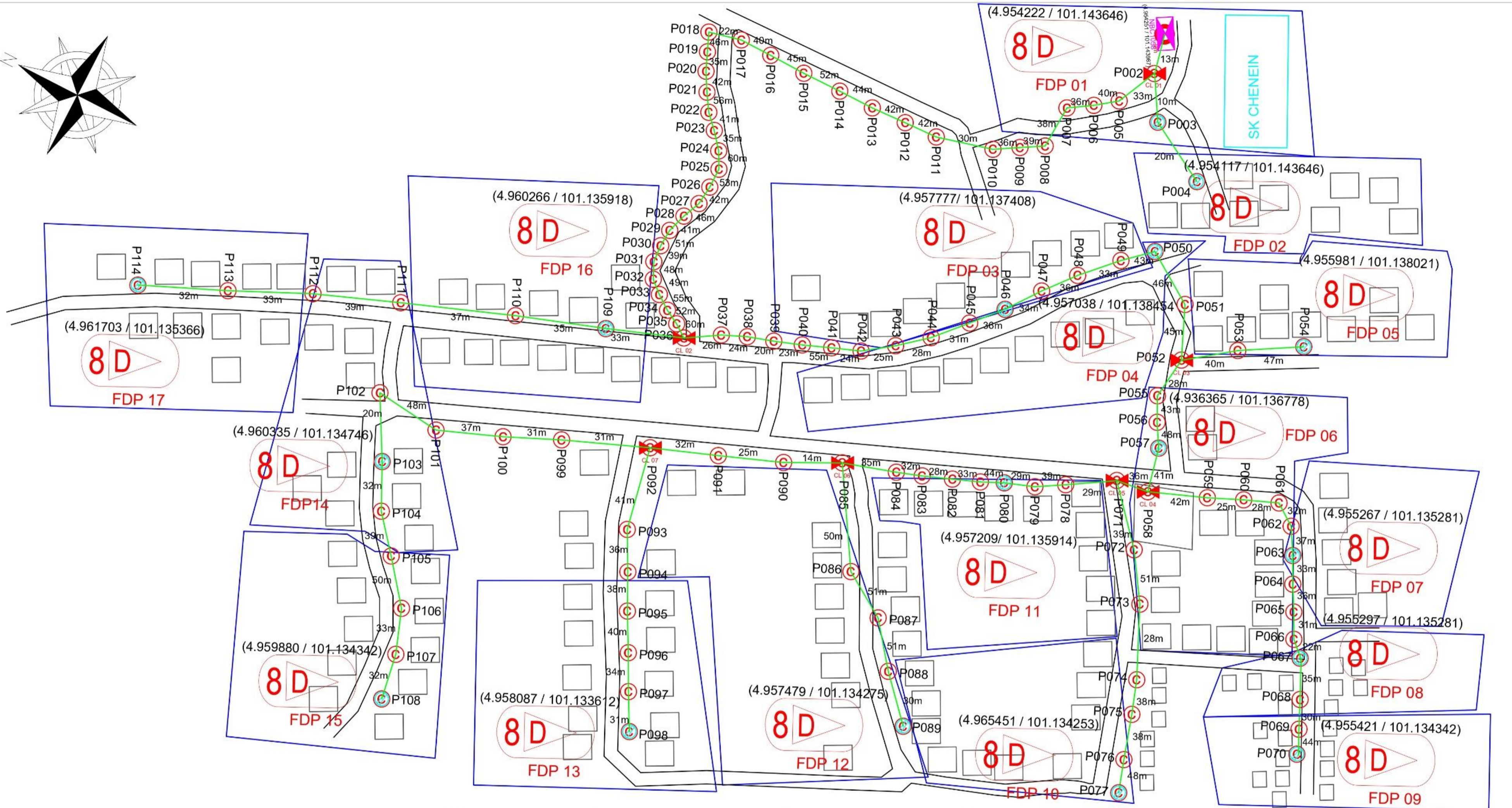
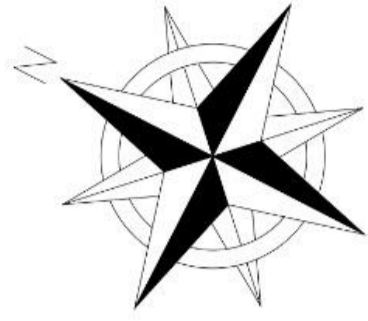


PROJEK PENYEDIAAN DAN PENYELENGGARAAN POINT OF PRESENCE (POP)
FASA 2: HAB INFRASTRUKTUR GENTIAN OPTIK BERHAMPIRAN DENGAN
SEKOLAH, KAWASAN PERINDUSTRIAN, PREMIS KERAJAAN DAN KOMUNITI
SEKITARNYA OLEH KEMENTERIAN KOMUNIKASI MALAYSIA - ZON UTARA
(KKMM.400-11/17/132(1))



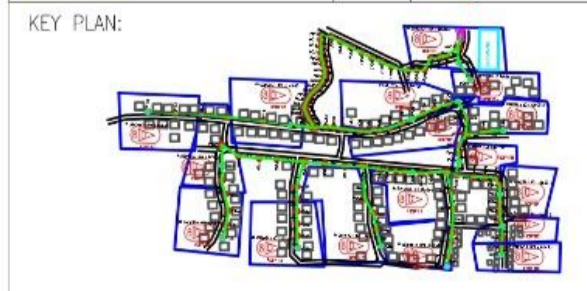
6.0 3rd PARTIES DEPENDENCIES

NO	LOCAL COUNCIL / AUTHORITY	REMARK
1	Majlis Perbandaran Kuala Kangsar	4196 m
2	JKR Daerah Kuala Kangsar	0 m



12C FOC	Installed 1:4 / 1:8 splitter	Existing TNB Pole	Pole Ring	17	Micro-Trenching (Meter)	#	Active Outdoor Numbering	CL01	Closure NO.
24C FOC	FDC	Installed Riser	New Manhole (PIT)		Temporary Infra (Meter)	NBD#	FDC NO.	DP1	FDP NO.
48C FOC	Closure	FDP with (1:8) splitter	New Manhole(JRC?)	7C	FDP Boundary	MH1	MH NO.		
96C FOC	Installed Pole (9m)	Suspension	Existing Manhole		HDD (Meter)	TKS-1	Existing TNB Pole NO.		
144C FOC	Installed Pole (7.5m)	Tension	Loop / Coil (Meter)		Open Cut (Meter)	P001	New Pole NO.		

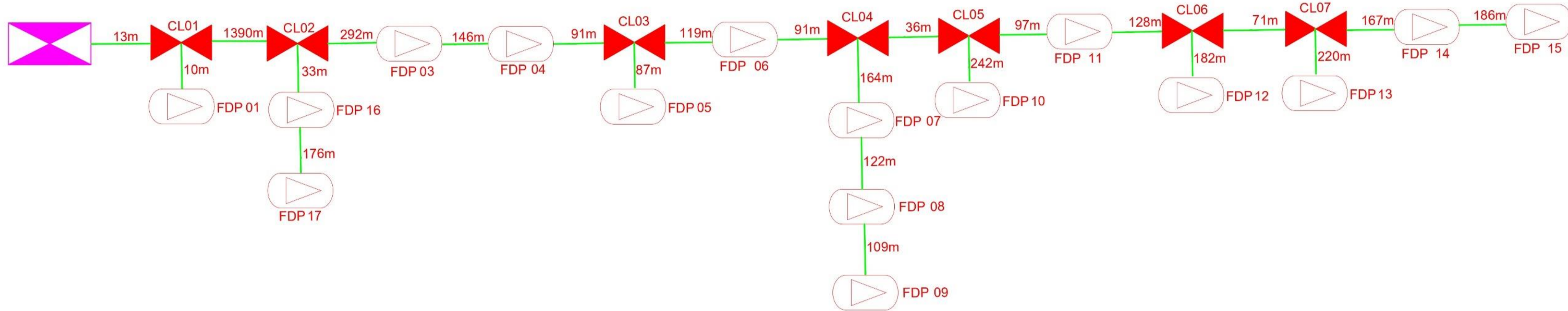
ACTUAL HOMEPASS :



PROJECT TITLE:
CONTRACT FOR THE PROVISION OF SUPPLY, INSTALLATION AND COMMISSIONING OF FTTX NETWORK INFRASTRUCTURE - POP 2 PROJECT (D-SIDE) - ABA4047 - SK CHENEIN

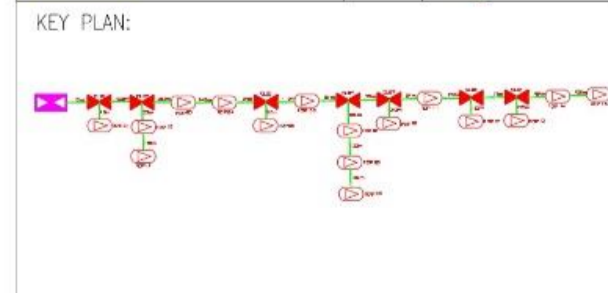
DRAWING TITLE:
CONSTRUCTION DRAWING - SK CHENEIN

Design By : M.DANIEL ADIKHA	Date : 30 NOVEMBER 2024
Drawn By : M.DANIEL ADIKHA	Scale :
Checked By :	Job Number :
DRAWING NUMBER :	Sheet : 1 / 1
THIS PRINT AND ITS COPYRIGHT ARE THE PROPERTY OF ARA TIMUR SDN BHD	



12C FOC	Installed 1:4 / 1:8 splitter	Existing TNB Pole	Pole Ring	17	Micro-Trenching (Meter)	#	Active Outdoor Numbering	CL01	Closure NO.	
24C FOC	4196m	FDC	1	Installed Riser	1B3C	New Manhole (PIT)	Temporary Infra (Meter)	NBD#	FDC NO.	
48C FOC	Closure	7	FDP with (1:8) splitter	17	New Manhole(JRC7)	FDP Boundary	MH1	MH NO.	DP1	FDP NO.
96C FOC	Installed Pole (9m)	1	Suspension		Existing Manhole	HDD (Meter)	TKS-1	Existing TNB Pole NO.		
144C FOC	Installed Pole (7.5m)	113	Tension		Loop / Coil (Meter)	Open Cut (Meter)	P001	New Pole NO.		

ACTUAL HOMEPASS :



PROJECT OWNER:

MAIN CONTRACTOR:

SUB-CONTRACTOR:

PROJECT TITLE:
CONTRACT FOR THE PROVISION OF SUPPLY, INSTALLATION AND COMMISSIONING OF FTTX NETWORK INFRASTRUCTURE - POP 2 PROJECT (D-SIDE) - ABA4047 - SK CHENEIN

DRAWING TITLE:
CONSTRUCTION DRAWING - SK CHENEIN

PROJECT PHASE:

Design By : M.DANIEAL ADIKHA	Date : 30 NOVEMBER 2024
Drawn By : M.DANIEAL ADIKHA	Scale :
Checked By :	Job Number :
DRAWING NUMBER :	Sheet : 1 / 1
THIS PRINT AND ITS COPYRIGHT ARE THE PROPERTY OF ARA TIMUR SDN BHD	
Size :	