

## TECHNICAL PROPOSAL POP2 ABAB020 SEKOLAH KEBANGSAAN MATANG KUNDA ( D-SIDE )

**Company Name** : T&H PANJI EMPIRE SDN BHD  
**Company Address** : 39A Jalan Jelapang 5, Pusat Komersial Jelapang, 30020 Ipoh, Perak Darul Ridzuan.  
**Prepared By** : Muhamad Hasif Bin Mohamed Hanif  
**Date** : 10/12/2024



### Starting Point

**Site / Boundary Name** : Bagan Datuk  
**Address** : Kampung Matang Kunda  
**District** : Bagan Datuk  
**Postcode** : 36100  
**State** : Perak  
**GPS Coordinate** : 3.959295, 100.765280  
**LRD** : A

### End Point

**Site / Boundary Name** : Bagan Datuk  
**Address** : Kampung Matang Kunda  
**District** : Bagan Datuk  
**Postcode** : 36100  
**State** : Perak  
**GPS Coordinate** : 3.952282, 100.779733  
**LRD** : B



PROJEK PENYEDIAAN DAN PENYELENGGARAAN POINT OF PRESENT (POP) FASA 2: HAB INFRASTRUKTUR GENTIAN OPTIK BERHAMPIRAN DENGAN SEKOLAH, KAWASAN PERINDUSTRIAN, PREMIS KERAJAAN DAN KOMUNITI SEKITARNYA OLEH KEMENTERIAN KOMUNIKASI MALAYSIA - ZON UTARA (KKMM.400-11/17/132(1))



## 1.0 WORK SUMMARY

NO	PROPOSED DISTANCE AND METHOD	UNIT	QUANTITY
1	Horizontal Directional Drilling (HDD)	m	0
2	Carriage Way Open Trench (CW)	m	0
3	Grass Verge Open Trenching (GV)	m	0
4	Micro Trenching (MT)	m	0
Total			0

NO	OTHER INFORMATION	UNIT	QUANTITY
1	Installation of Short Span ADSS Fiber Cables	m	3800
2	Install New Pole	ea	85
3	Install New JRC7 Manhole	ea	0
4	Install GI Riser 100mm	ea	0
5	Install Fiber Distribution Point	ea	7
6	Closure (Splicing, Termination and Testing)	ea	1



PROJEK PENYEDIAAN DAN PENYELENGGARAAN POINT OF PRESENT (POP) FASA 2: HAB INFRASTUKTUR GENTIAN OPTIK BERHAMPIRAN DENGAN SEKOLAH, KAWASAN PERINDUSTRIAN, PREMIS KERAJAAN DAN KOMUNITI SEKITARNYA OLEH KEMENTERIAN KOMUNIKASI MALAYSIA - ZON UTARA (KKMM.400-11/17/132(1))



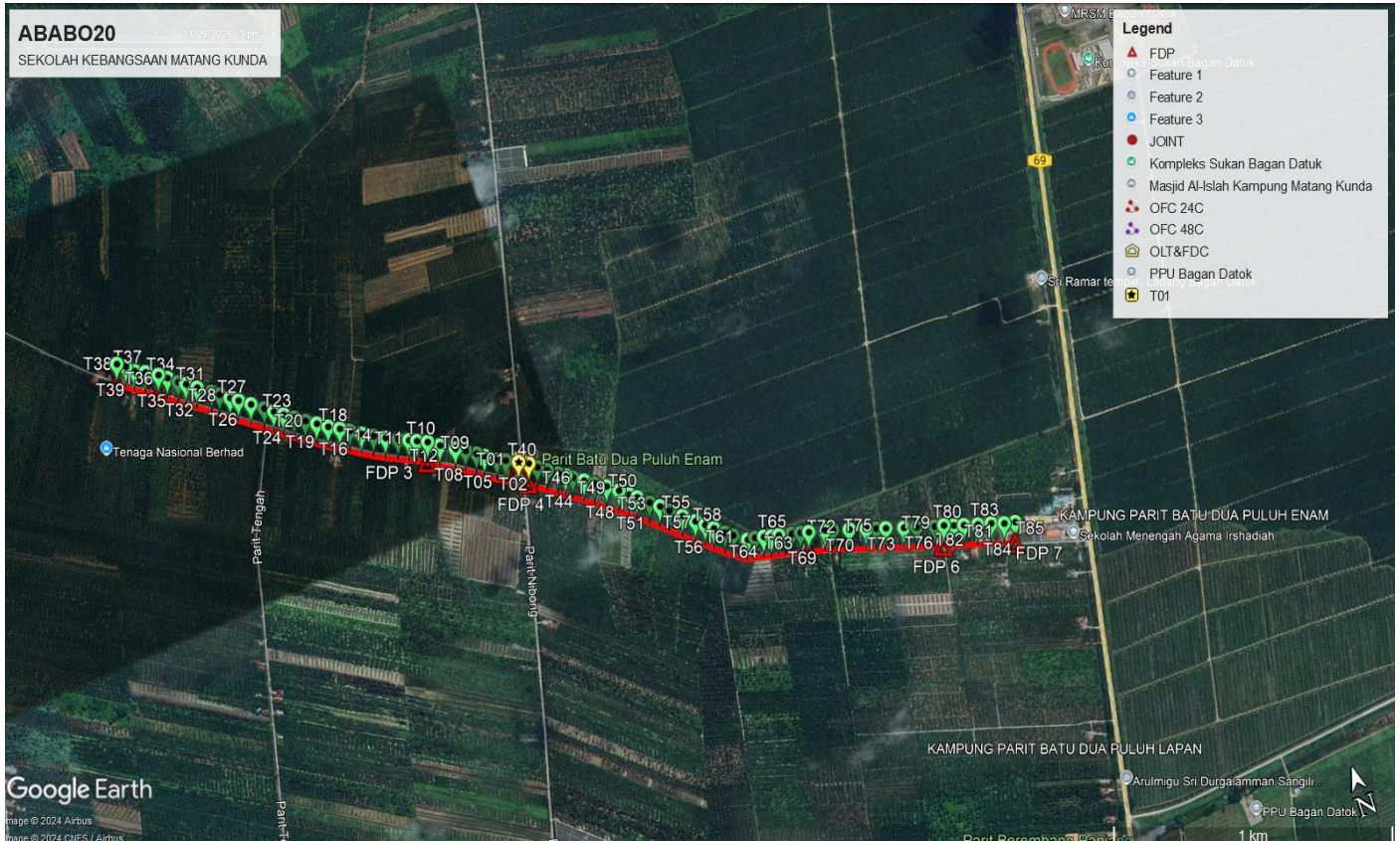
## 2.0 LOCAL AUTHORITY SUMMARY

Daerah Manjung

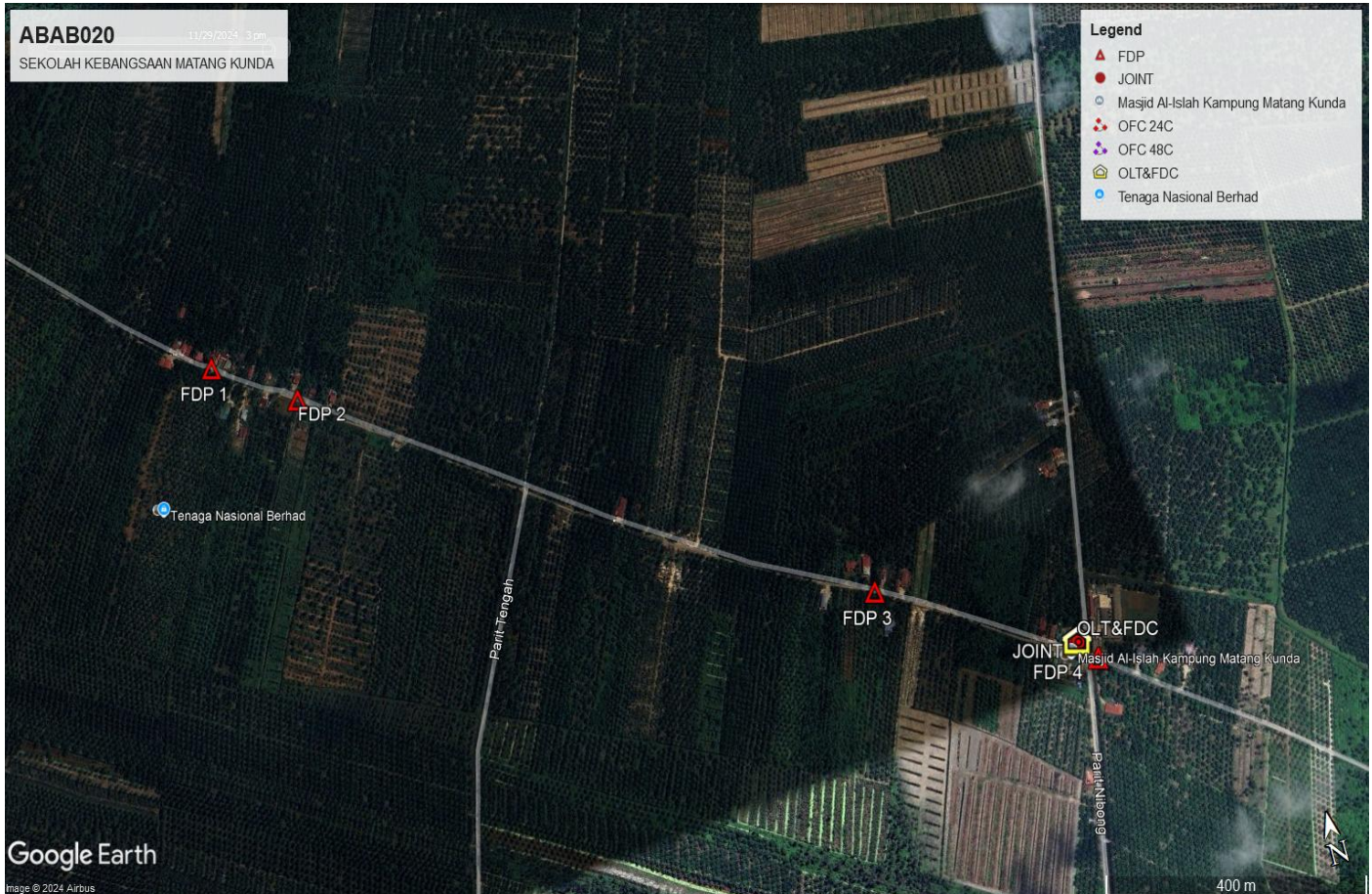
NO	ITEMS	Owner	Quantity	Distance (m)
1	HDD	JKR	-	-
		Majlis	-	-
		Estate / Private Land	-	-
2	New Pole	JKR	-	-
		Majlis	85	3800
		Estate / Private Land	-	-
<b>Total Distance (m)</b>				<b>3800</b>

### 3.0 SITE PLAN (KMZ)

#### 3.1 Overview Site Area



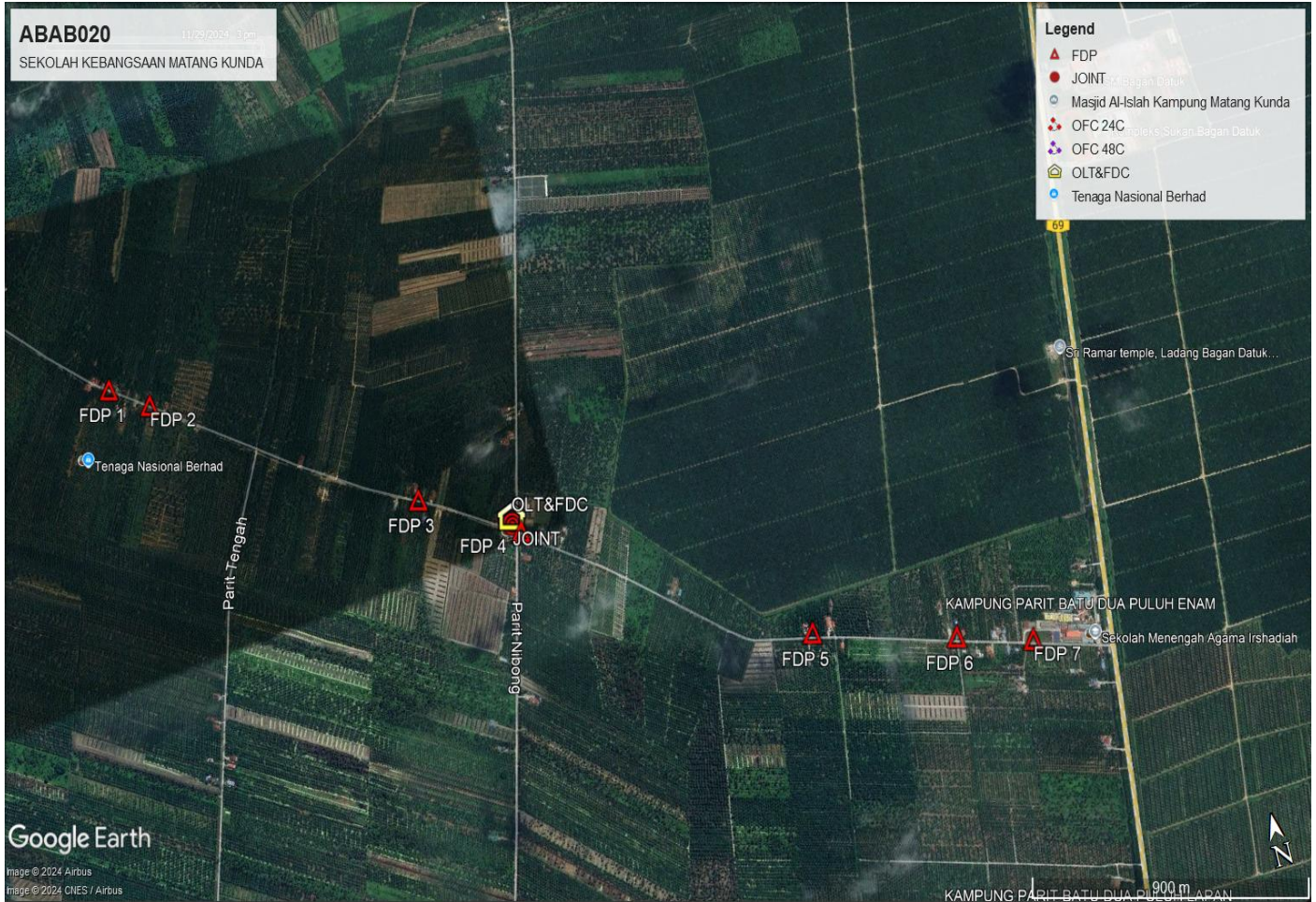
### 3.1 Overview FDP Location



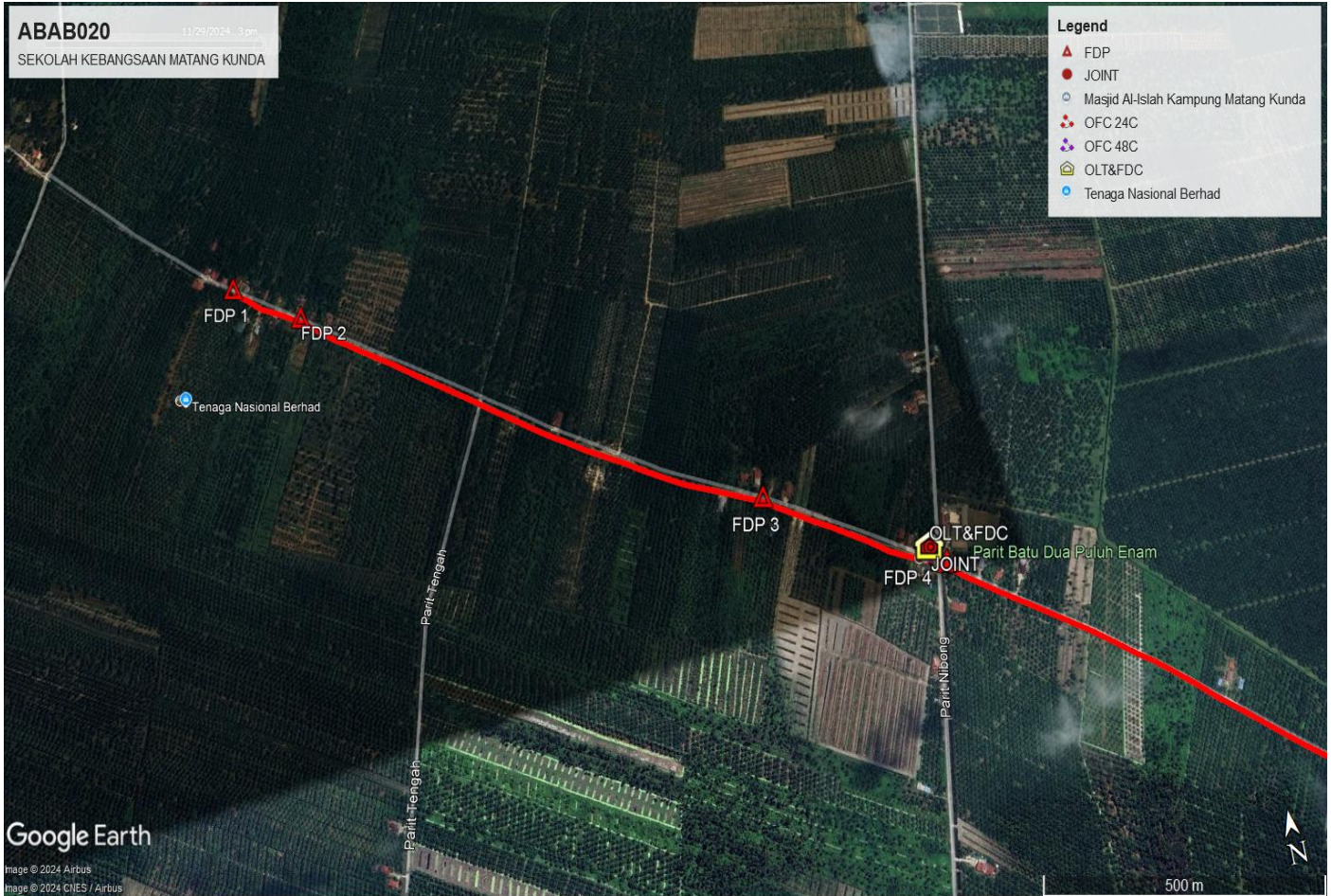
### 3.2 Overview FDP Location



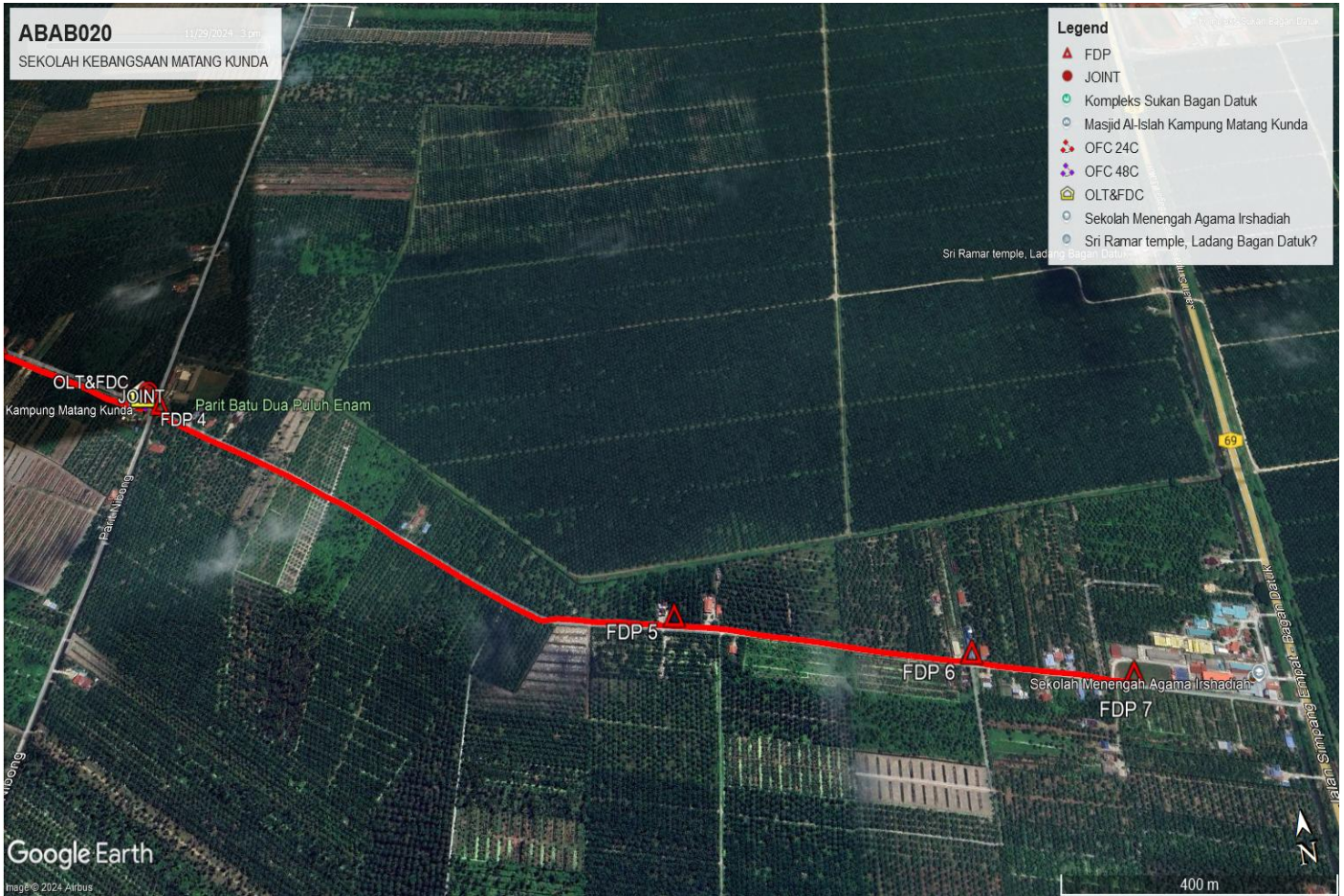
### 3.3 Overview FDP Location



### 3.3 Site Plan - KMZ Routing (All Local Authority)



### 3.4 Site Plan – KMZ Routing All Local Authority



#### 4.0 PROPOSED NEW MANHOLE

Proposed New Manhole Coordinate					
No.	Manhole Number	Distance (m)	Latitude	Longitude	Local Authority
1	MH01	-	-	-	-
2	MH02	-	-	-	-

#### 5.0 PROPOSED NEW POLE

Proposed New Pole Coordinate					
No.	Pole Number	Distance (m)	Latitude	Longitude	Local Authority
1	T001	15	3.959295	100.765280	Majlis Perbandaran Teluk Intan
2	T002	15	3.959433	100.765354	Majlis Perbandaran Teluk Intan
3	T003	46	3.959484	100.764909	Majlis Perbandaran Teluk Intan
4	T004	32	3.959602	100.764657	Majlis Perbandaran Teluk Intan
5	T005	45	3.959840	100.764310	Majlis Perbandaran Teluk Intan
6	T006	30	3.959994	100.764092	Majlis Perbandaran Teluk Intan
7	T007	40	3.960191	100.763787	Majlis Perbandaran Teluk Intan
8	T008	36	3.960358	100.763500	Majlis Perbandaran Teluk Intan
9	T009	53	3.960614	100.763070	Majlis Perbandaran Teluk Intan
10	T010 (FDP 3)	44	3.960847	100.762730	Majlis Perbandaran Teluk Intan
11	T011	40	3.960988	100.762412	Majlis Perbandaran Teluk Intan
12	T012	28	3.961095	100.762178	Majlis Perbandaran Teluk Intan
13	T013	38	3.961239	100.761860	Majlis Perbandaran Teluk Intan
14	T014	44	3.961414	100.761490	Majlis Perbandaran Teluk Intan
15	T015	42	3.961593	100.761153	Majlis Perbandaran Teluk Intan
16	T016	44	3.961782	100.760816	Majlis Perbandaran Teluk Intan
17	T017	45	3.962001	100.760484	Majlis Perbandaran Teluk Intan
18	T018	36	3.962157	100.760202	Majlis Perbandaran Teluk Intan
19	T019	41	3.962340	100.759878	Majlis Perbandaran Teluk Intan
20	T020	42	3.962549	100.759562	Majlis Perbandaran Teluk Intan
21	T021	40	3.962750	100.759247	Majlis Perbandaran Teluk Intan
22	T022	40	3.962956	100.758949	Majlis Perbandaran Teluk Intan
23	T023	40	3.963161	100.758658	Majlis Perbandaran Teluk Intan
24	T024	36	3.963348	100.758388	Majlis Perbandaran Teluk Intan
25	T025	35	3.963541	100.758131	Majlis Perbandaran Teluk Intan
26	T026	50	3.963800	100.757769	Majlis Perbandaran Teluk Intan
27	T027	46	3.964042	100.757427	Majlis Perbandaran Teluk Intan
28	T028	31	3.964204	100.757196	Majlis Perbandaran Teluk Intan
29	T029	40	3.964416	100.756907	Majlis Perbandaran Teluk Intan
30	T030	30	3.964580	100.756689	Majlis Perbandaran Teluk Intan
31	T031	54	3.964861	100.756283	Majlis Perbandaran Teluk Intan
32	T032	42	3.965081	100.755982	Majlis Perbandaran Teluk Intan

**Proposed New Pole Coordinate**

No.	Pole Number	Distance (m)	Latitude	Longitude	Local Authority
33	T033	29	3.965219	100.755766	Majlis Perbandaran Teluk Intan
34	T034	40	3.965453	100.755480	Majlis Perbandaran Teluk Intan
35	T035 (FDP 2)	34	3.965638	100.755236	Majlis Perbandaran Teluk Intan
36	T036	46	3.965845	100.754884	Majlis Perbandaran Teluk Intan
37	T037	41	3.966007	100.754558	Majlis Perbandaran Teluk Intan
38	T038	35	3.966215	100.754340	Majlis Perbandaran Teluk Intan
39	T039 (FDP 1)	36	3.966413	100.754086	Majlis Perbandaran Teluk Intan
40	T040 (FDP 4)	35	3.959170	100.765564	Majlis Perbandaran Teluk Intan
41	T041	34	3.958952	100.765801	Majlis Perbandaran Teluk Intan
42	T042	36	3.958765	100.766066	Majlis Perbandaran Teluk Intan
43	T043	41	3.958556	100.766363	Majlis Perbandaran Teluk Intan
44	T044	28	3.958416	100.766574	Majlis Perbandaran Teluk Intan
45	T045	26	3.958284	100.766771	Majlis Perbandaran Teluk Intan
46	T046	41	3.958073	100.767080	Majlis Perbandaran Teluk Intan
47	T047	39	3.957878	100.767370	Majlis Perbandaran Teluk Intan
48	T048	44	3.957667	100.767699	Majlis Perbandaran Teluk Intan
49	T049	47	3.957415	100.768033	Majlis Perbandaran Teluk Intan
50	T050	38	3.957197	100.768301	Majlis Perbandaran Teluk Intan
51	T051	31	3.957028	100.768518	Majlis Perbandaran Teluk Intan
52	T052	48	3.956751	100.768842	Majlis Perbandaran Teluk Intan
53	T053	39	3.956529	100.769116	Majlis Perbandaran Teluk Intan
54	T054	37	3.956304	100.769355	Majlis Perbandaran Teluk Intan
55	T055	49	3.956012	100.769702	Majlis Perbandaran Teluk Intan
56	T056	50	3.955722	100.770039	Majlis Perbandaran Teluk Intan
57	T057	38	3.955512	100.770296	Majlis Perbandaran Teluk Intan
58	T058	33	3.955323	100.770527	Majlis Perbandaran Teluk Intan
59	T059	42	3.955081	100.770825	Majlis Perbandaran Teluk Intan
60	T060	30	3.954916	100.771040	Majlis Perbandaran Teluk Intan
61	T061	53	3.954636	100.771439	Majlis Perbandaran Teluk Intan
62	T062	27	3.954615	100.771684	Majlis Perbandaran Teluk Intan
63	T063	31	3.954545	100.771957	Majlis Perbandaran Teluk Intan
64	T064	28	3.954475	100.772197	Majlis Perbandaran Teluk Intan
65	T065	26	3.954431	100.772430	Majlis Perbandaran Teluk Intan
66	T066	23	3.954388	100.772635	Majlis Perbandaran Teluk Intan
67	T067	23	3.954336	100.772834	Majlis Perbandaran Teluk Intan
68	T068	32	3.954271	100.773116	Majlis Perbandaran Teluk Intan
69	T069 (FDP 5)	30	3.954215	100.773372	Majlis Perbandaran Teluk Intan
70	T070	58	3.954081	100.773880	Majlis Perbandaran Teluk Intan
71	T071	27	3.954011	100.774115	Majlis Perbandaran Teluk Intan
72	T072	60	3.953843	100.774628	Majlis Perbandaran Teluk Intan
73	T073	60	3.953686	100.775143	Majlis Perbandaran Teluk Intan
74	T074	35	3.953584	100.775453	Majlis Perbandaran Teluk Intan
75	T075	33	3.953490	100.775746	Majlis Perbandaran Teluk Intan
76	T076	65	3.953308	100.776298	Majlis Perbandaran Teluk Intan
77	T077	46	3.953188	100.776690	Majlis Perbandaran Teluk Intan



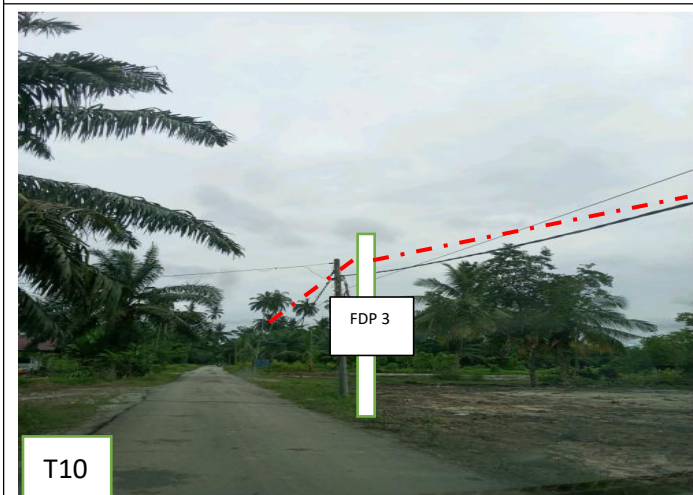
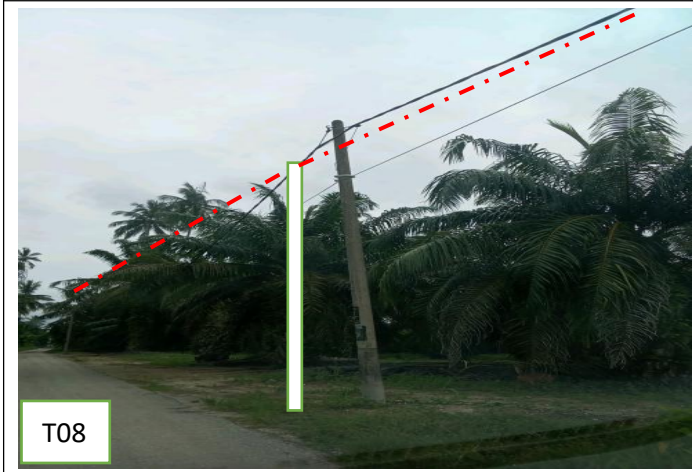
PROJEK PENYEDIAAN DAN PENYELENGGARAAN POINT OF PRESENT (POP) FASA 2: HAB INFRASTRUKTUR GENTIAN OPTIK BERHAMPIRAN DENGAN SEKOLAH, KAWASAN PERINDUSTRIAN, PREMIS KERAJAAN DAN KOMUNITI SEKITARNYA OLEH KEMENTERIAN KOMUNIKASI MALAYSIA - ZON UTARA (KKMM.400-11/17/132(1))



78	T078	64	3.953018	100.777251	Majlis Perbandaran Teluk Intan
79	T079 (FDP 6)	32	3.952946	100.777535	Majlis Perbandaran Teluk Intan
80	T080	36	3.952842	100.777838	Majlis Perbandaran Teluk Intan
81	T081	36	3.952745	100.778142	Majlis Perbandaran Teluk Intan
82	T082	50	3.952616	100.778571	Majlis Perbandaran Teluk Intan
83	T083	47	3.952505	100.778987	Majlis Perbandaran Teluk Intan
84	T084	47	3.952363	100.779385	Majlis Perbandaran Teluk Intan
85	T085 (FDP 7)	40	3.952282	100.779733	Majlis Perbandaran Teluk Intan

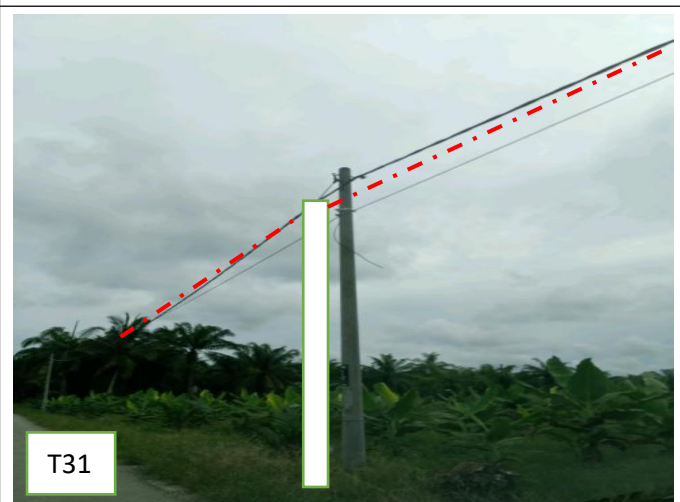
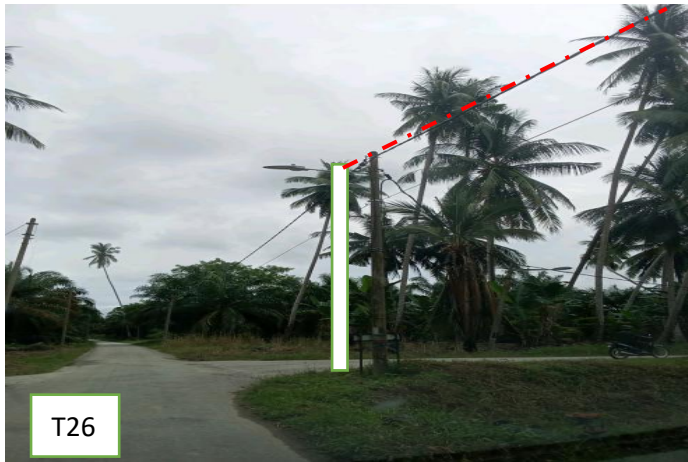
6.0 SITE PHOTOS - PROPOSED NEW POLE

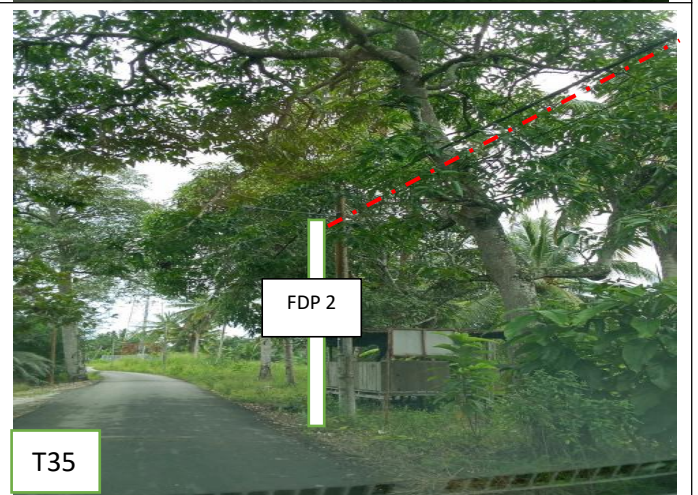
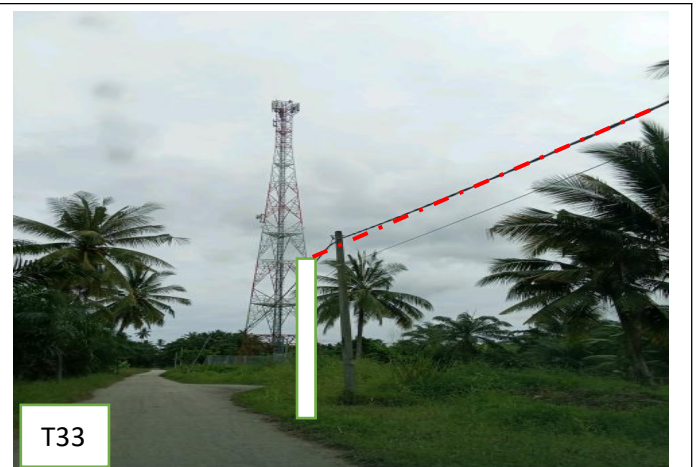


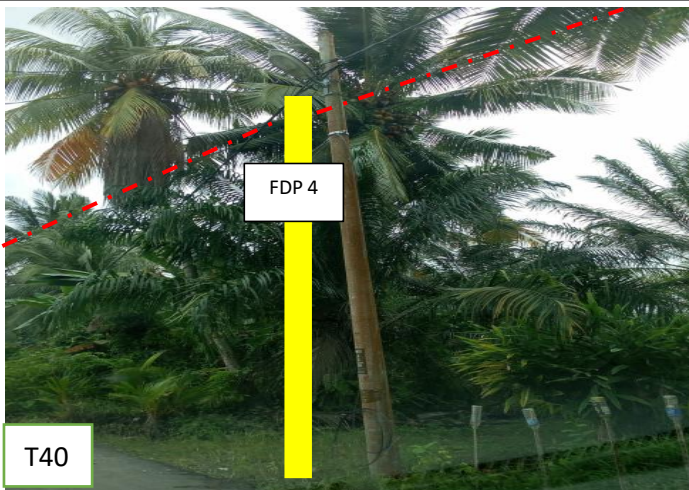
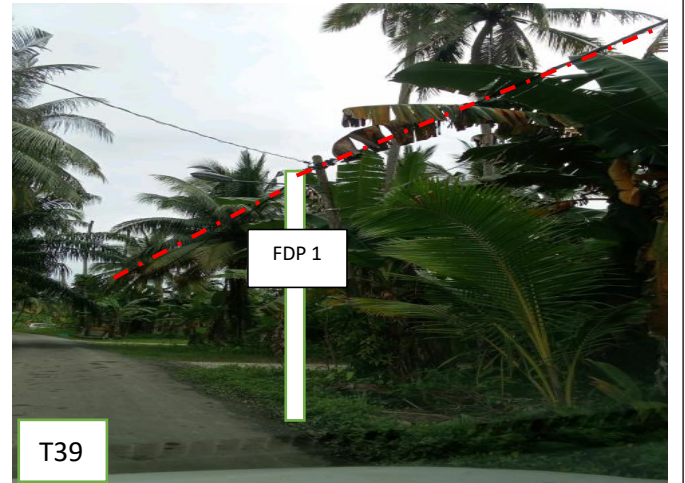


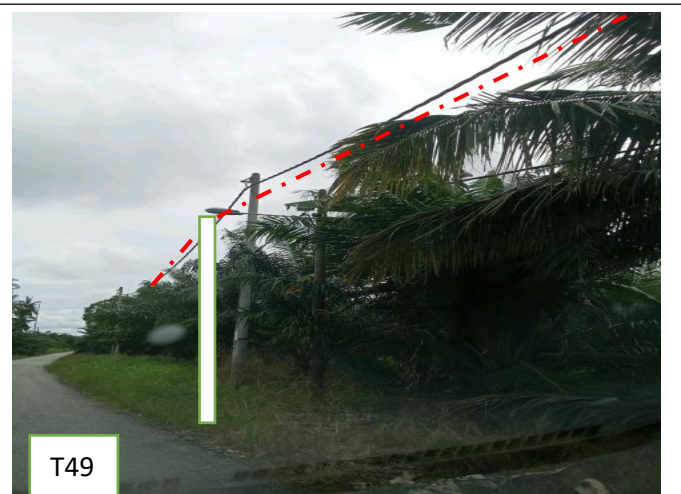


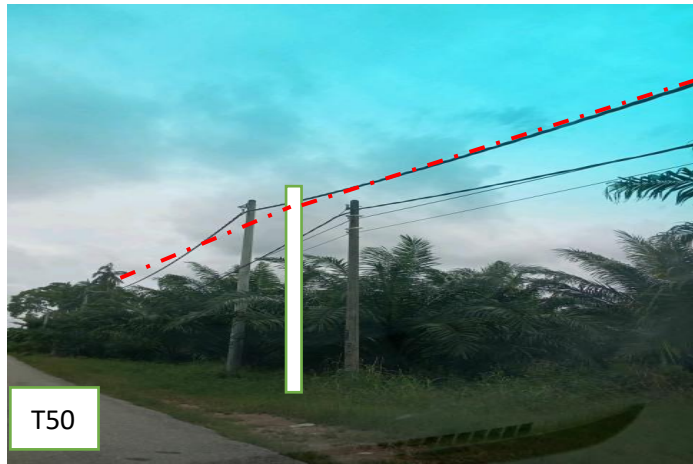


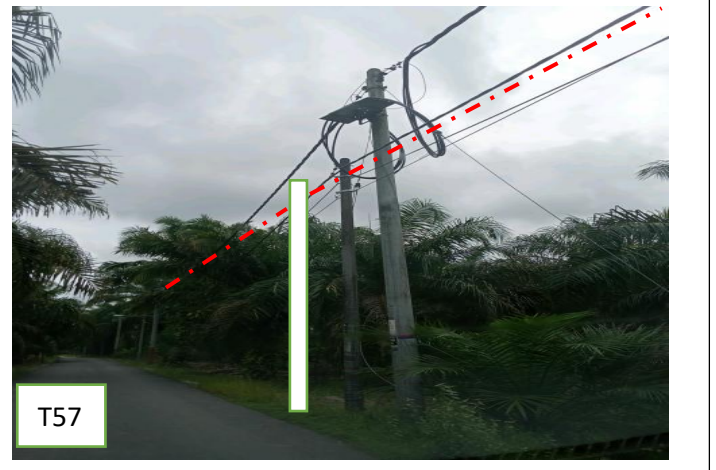


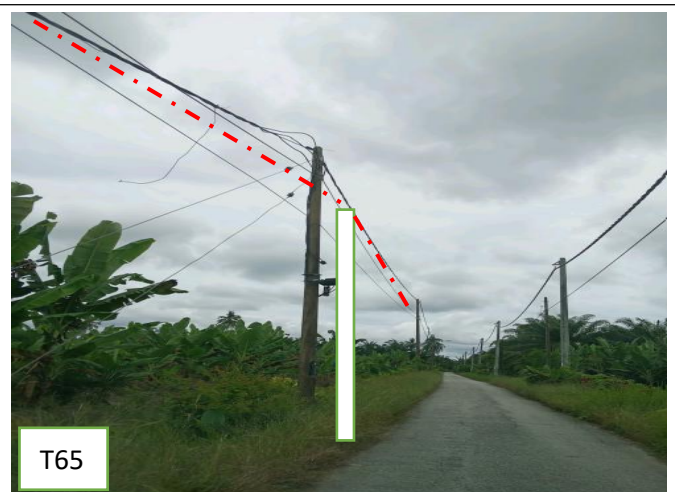
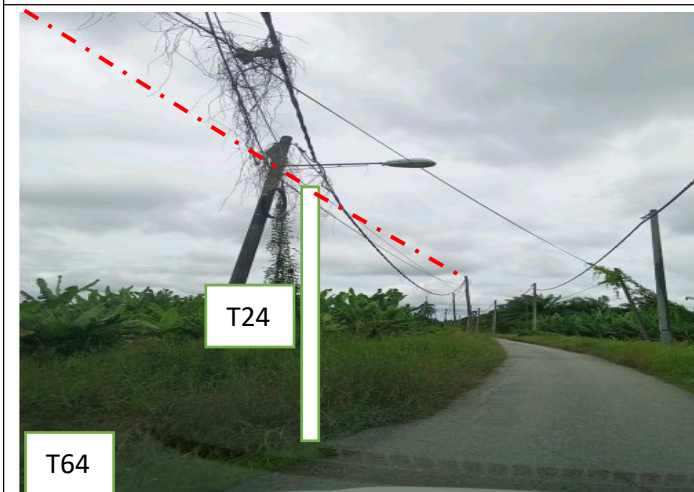
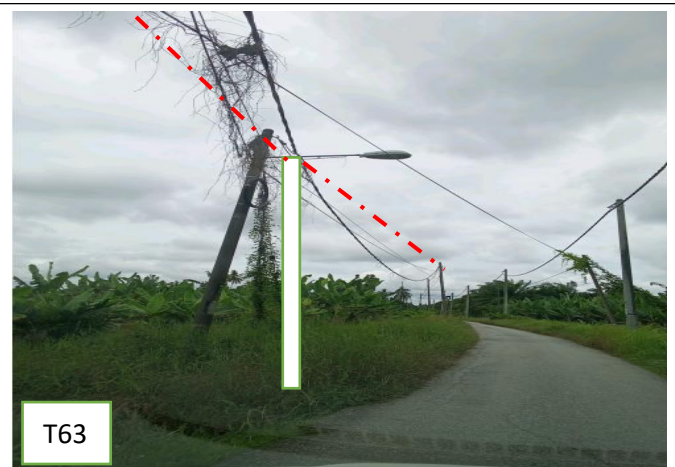


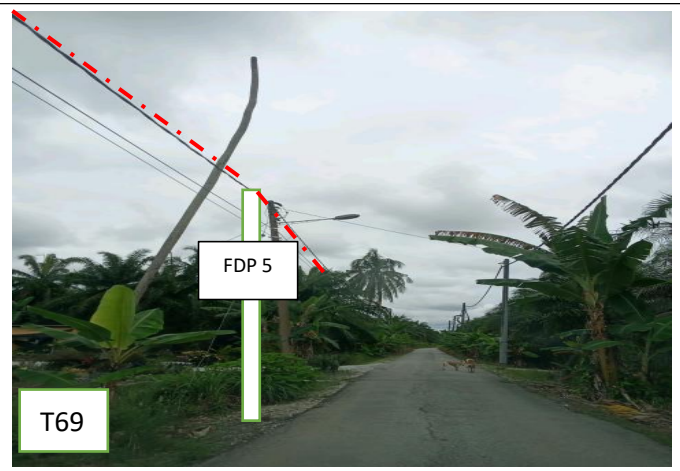


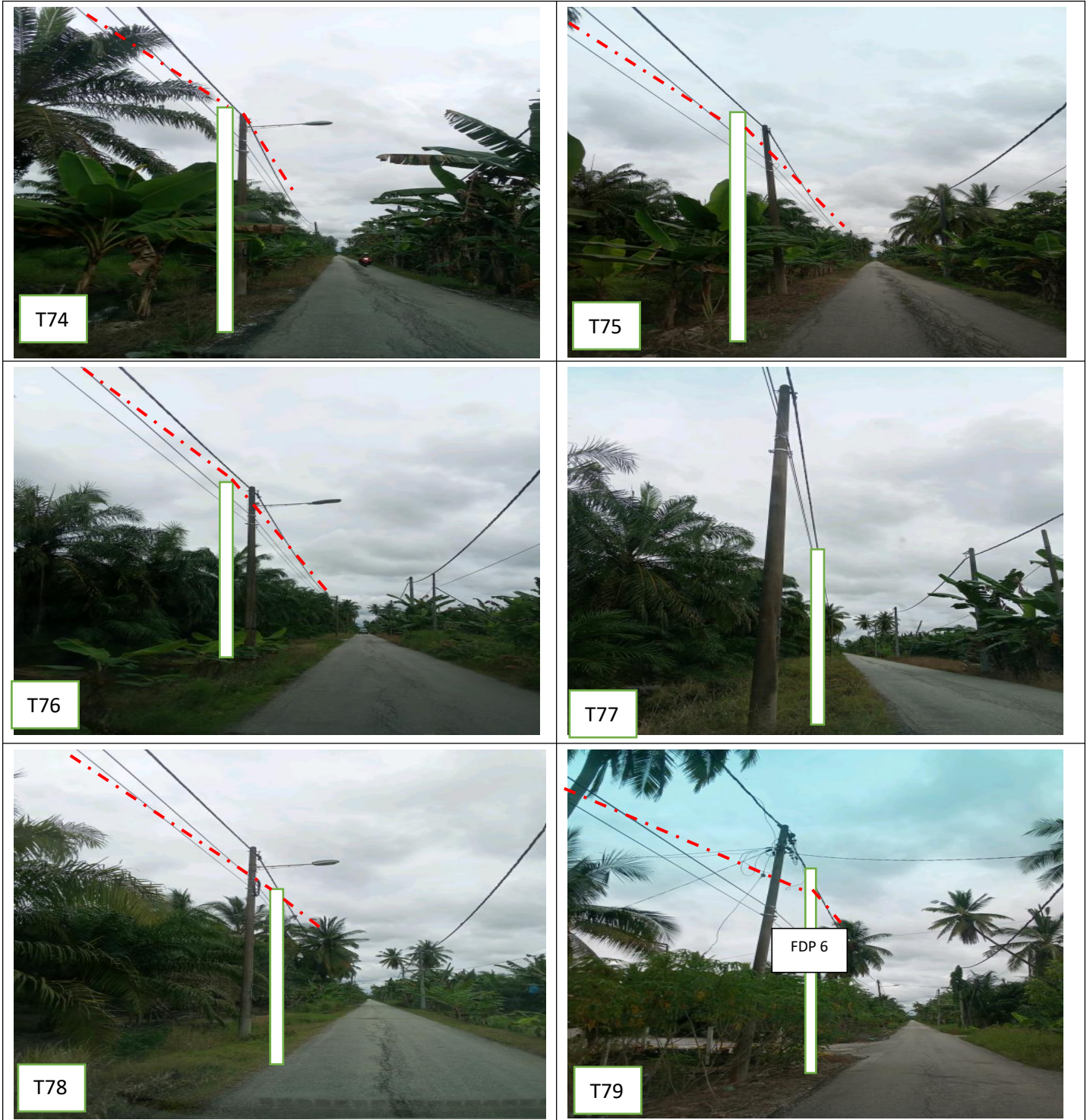


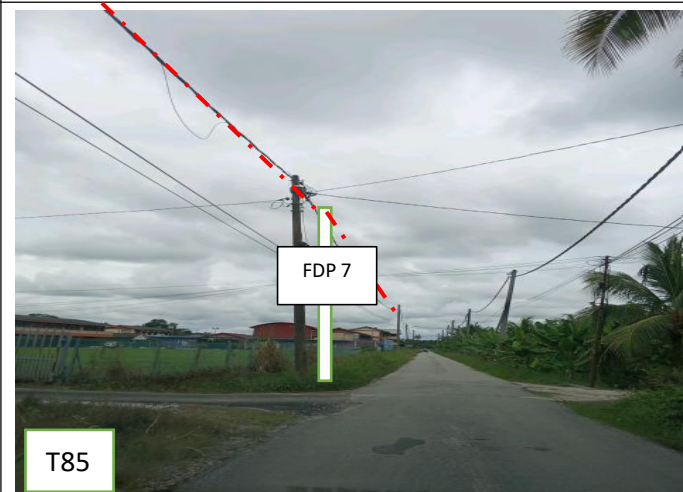














PROJEK PENYEDIAAN DAN PENYELENGGARAAN POINT OF PRESENT (POP) FASA 2: HAB INFRASTUKTUR GENTIAN OPTIK BERHAMPIRAN DENGAN SEKOLAH, KAWASAN PERINDUSTRIAN, PREMIS KERAJAAN DAN KOMUNITI SEKITARNYA OLEH KEMENTERIAN KOMUNIKASI MALAYSIA - ZON UTARA (KKMM.400-11/17/132(1))

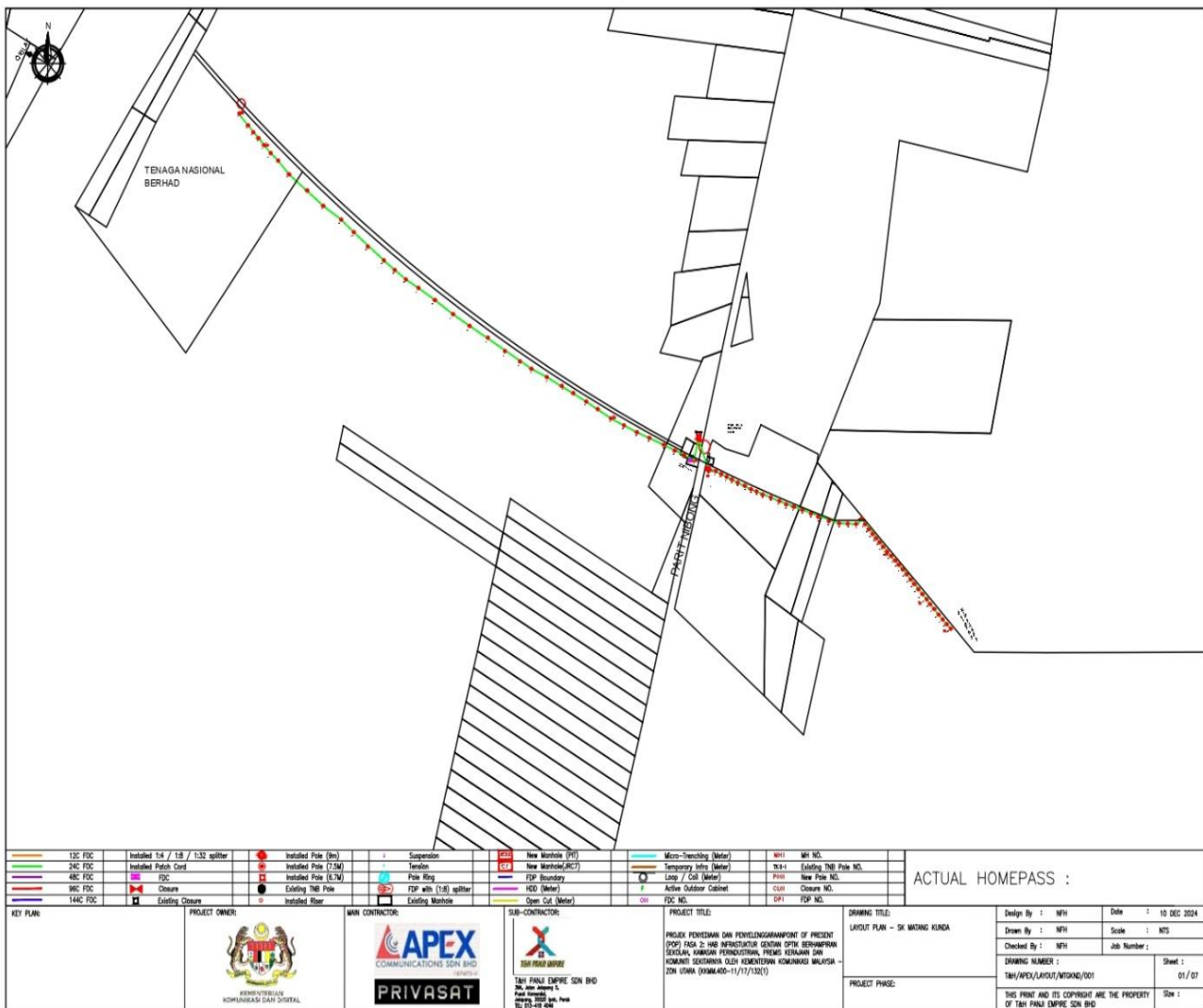


#### 7.0 3<sup>rd</sup> PARTIES DEPENDENCIES

NO	LOCAL COUNCIL / AUTHORITY	REMARK
1	Majlis Perbandaran Teluk Intan	3800M

8.0 Drawing

Layout 1

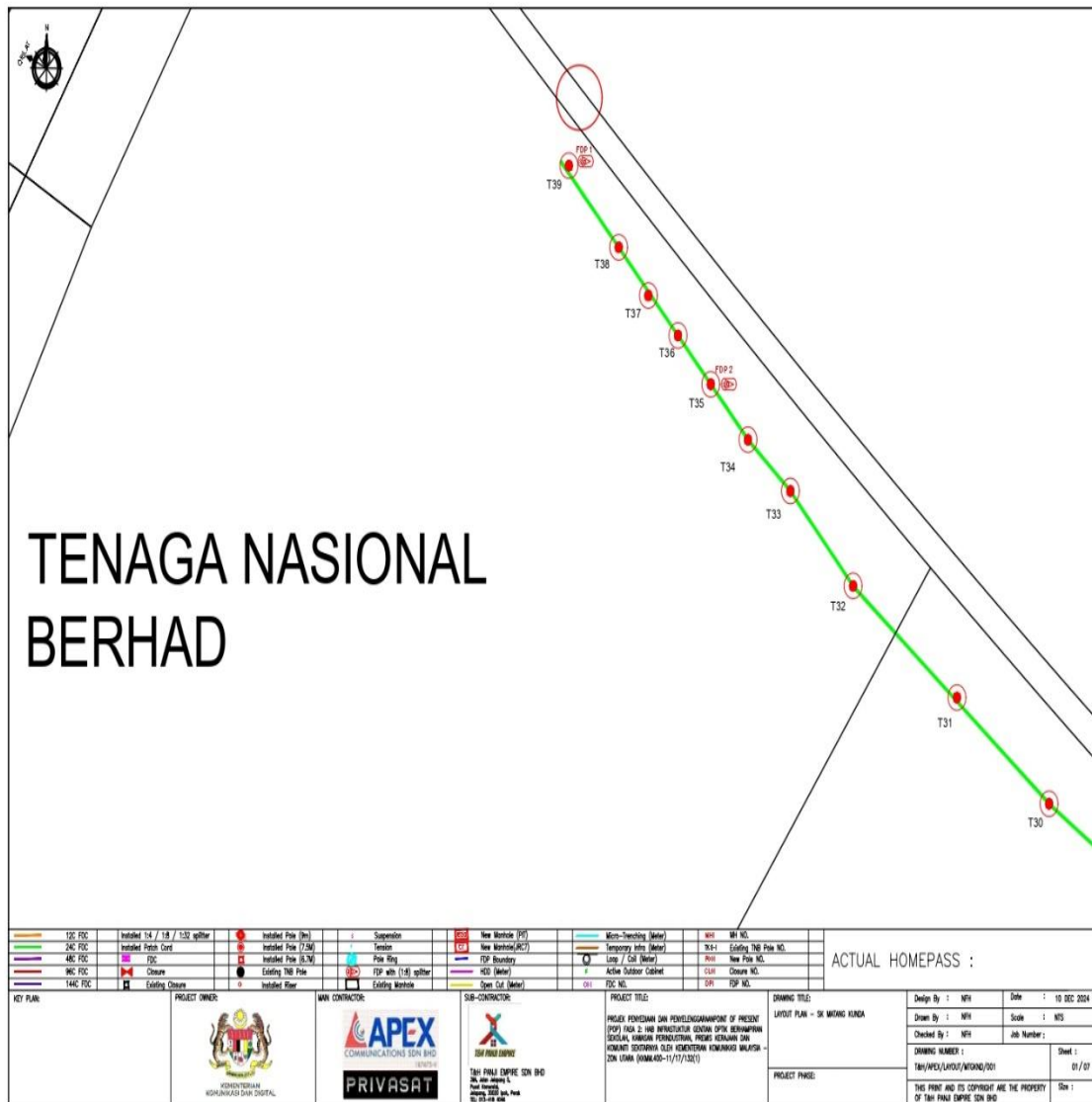




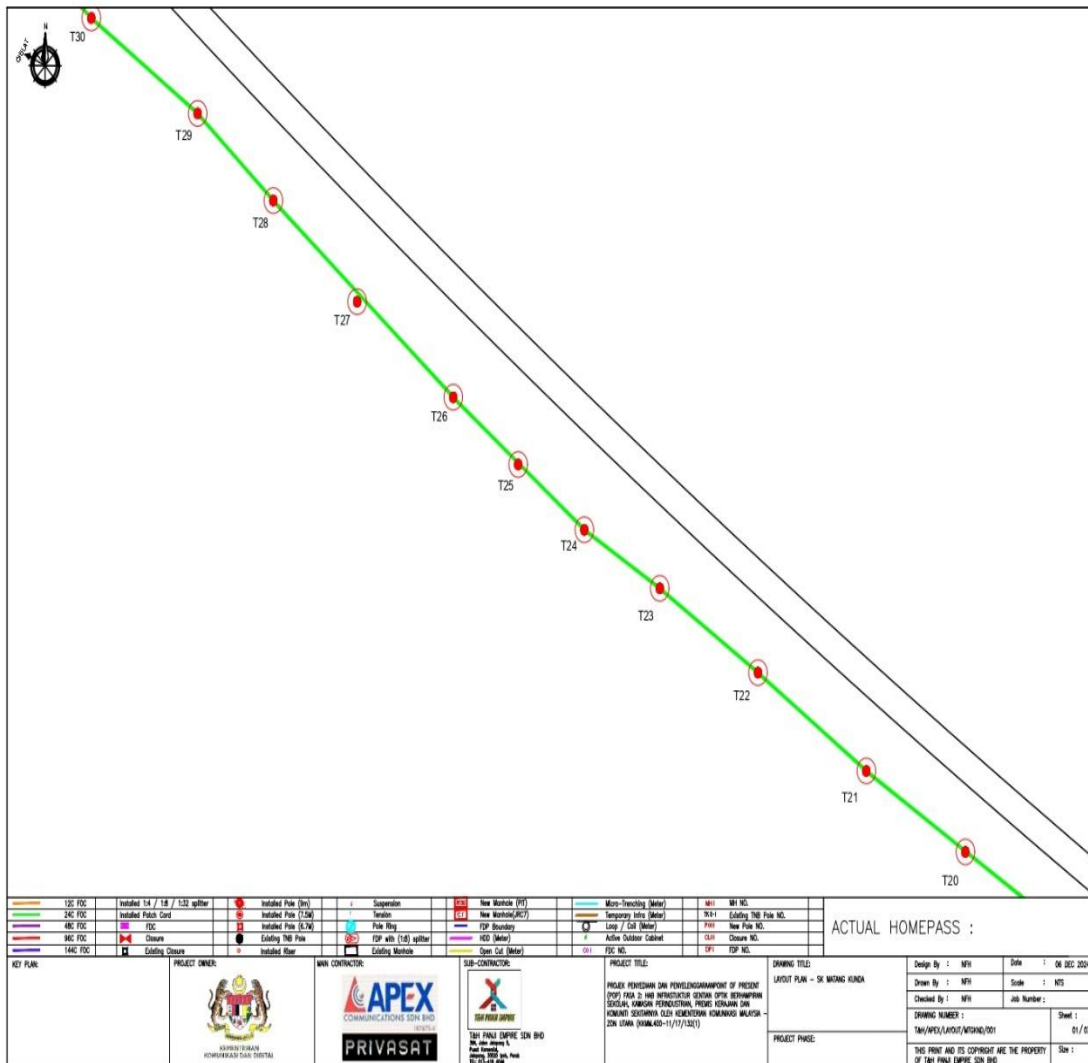
PROJEK PENYEDIAAN DAN PENYELENGGARAAN POINT OF PRESENT (POP) FASA 2: HAB INFRASTRUKTUR GENTIAN OPTIK BERHAMPIRAN DENGAN SEKOLAH, KAWASAN PERINDUSTRIAN, PREMIS KERAJAAN DAN KOMUNITI SEKITARNYA OLEH KEMENTERIAN KOMUNIKASI MALAYSIA - ZON UTARA (KKMM.400-11/17/132(1))



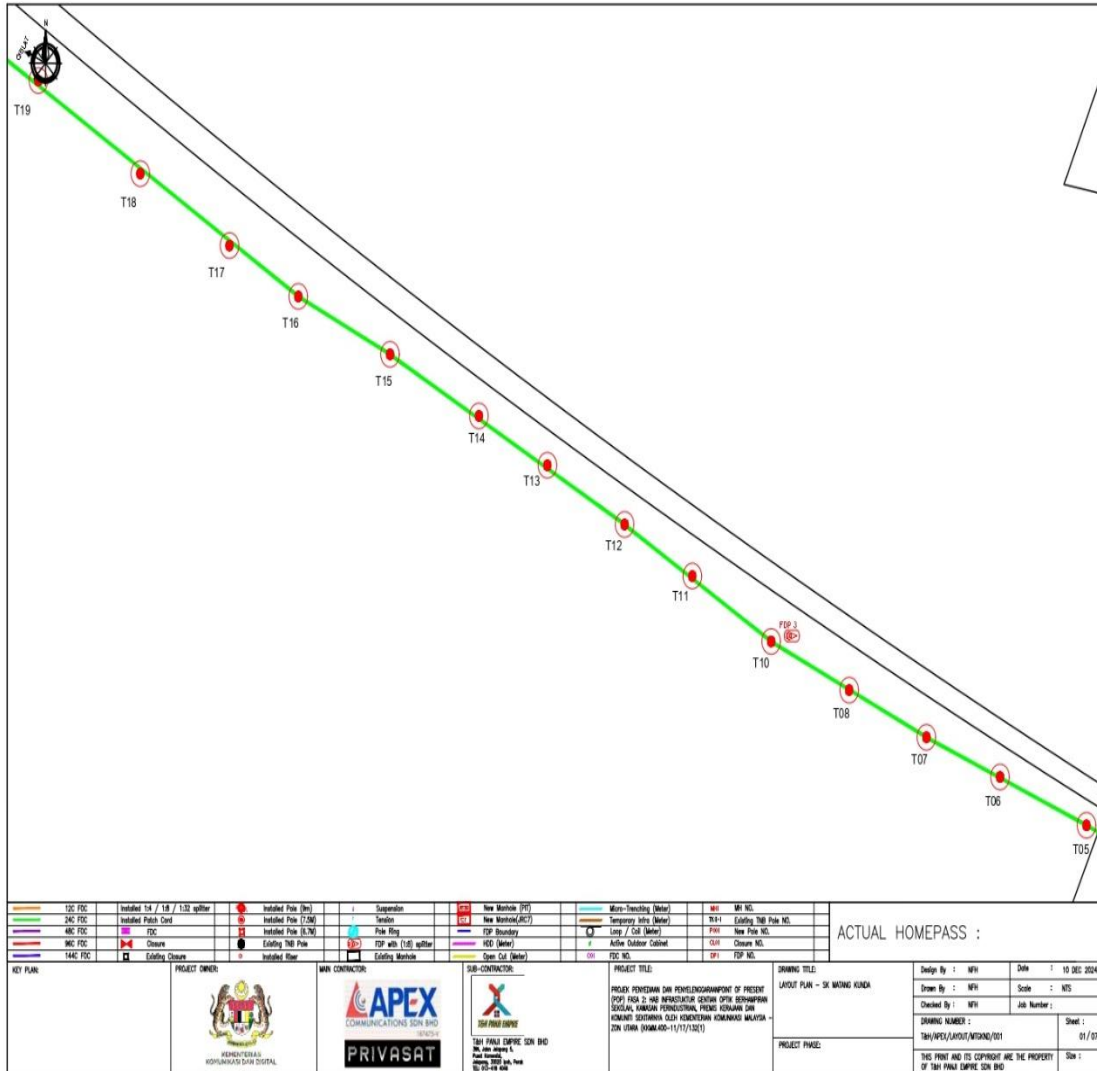
Layout 2



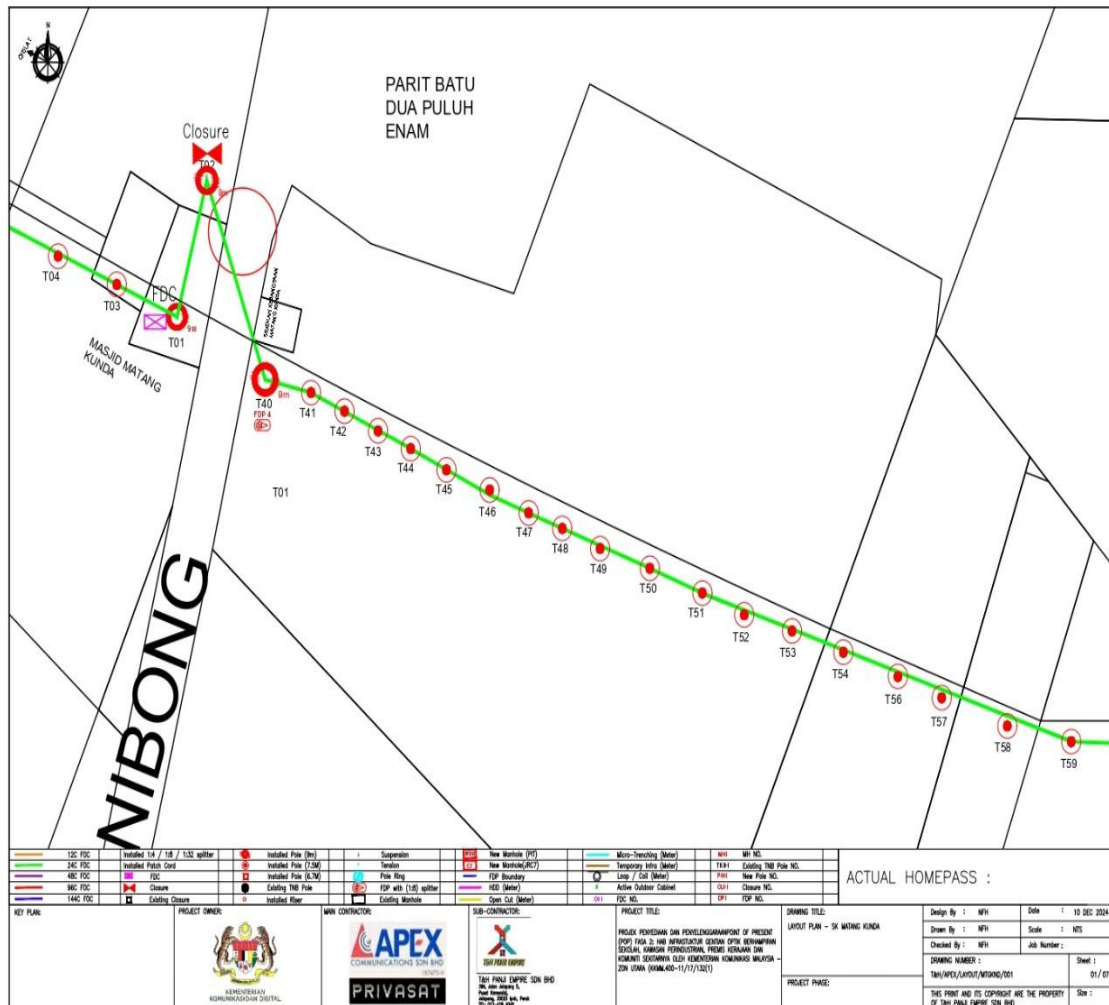
Layout 3



Layout 4



Layout 5





PROJEK PENYEDIAAN DAN PENYELENGGARAAN POINT OF PRESENT (POP) FASA 2: HAB INFRASTRUKTUR GENTIAN OPTIK BERHAMPIRAN DENGAN SEKOLAH, KAWASAN PERINDUSTRIAN, PREMIS KERAJAAN DAN KOMUNITI SEKITARNYA OLEH KEMENTERIAN KOMUNIKASI MALAYSIA - ZON UTARA (KKMM.400-11/17/132(1))



Layout 6

