

Template – Technical Proposal for TM Landed Project (Rev 0)

Revision Record

Revision No.	Description Of Change	Author	Effective Date
0	SRR FTTH GF KMT_C011 TAMAN JEBONG AMAN_MSB	MOHD KHAIRUL ASUAN BIN AHMAD	MAY 2026

Technical Proposal for TM Project



Project Description:	SRR FTTH GF KMT_C011 TAMAN JEBONG AMAN_MSB
Project Number:	TMNA/261322
TM Node	KMT
Region	NORTHERN
NE ID	PRK
Total FTTH Ports	80
Total Property	108
PF (%)	100%
RFSI Date	31-07-2026
GPS Coordinate	4.86861219N 100.6839093E

Prepared by:	MOHD KHAIRUL ASUAN BIN AHMAD
Company Name:	PROSERINS TECHNOLOGY SDN BHD
Date:	06/05/2026
TP Revision:	0

Contents

- 1.0 **FDC information**
 - 1.1 FDC Boundary
 - 1.2 FDC Details and Illustration

- 2.0 **FDP information**
 - 1. FDP and FOOSC Location
 - 2. FDP Boundary
 - 3. Cable Plan
 - 4. Spur Information
 - 5. FDP details
 - 6. Tie FDP details

- 3.0 **New Pole information**
 - 1. Pole plan
 - 2. Pole details
 - 3. Illustration

- 4.0 **Material Specification**
 - 1. Fiber Accessories - FDC/Mini FDC/FDP/ODF
 - 2. Civil Accessories – Manhole/Pole

- 5.0 **Costing & BOQ**
 - 1. Project BOQ
 - 2. Costing

MATRIX REQUIREMENT FOR PROJECT

NO	Item	Detail Item	Remark	TP Check list					
				FTTH >1 DP	FTTH 1 FDP	Add DP / Tie DP	NID/5G	Civil	Main FOC
1	Cabinet location	Boundary	Polygon on Map showing area covered by FDC	C	C	NR	NR	NR	NR
		Detail Illustration	Illustration showing FDP location on picture, table with detail address, latlong	C	C	C	C	NR	NR
2	Cable Plan	On Map	Cable Plan, ID, Distance, Route, Distance, Joint Location illustration on map	C	C	C	C	NR	C
		SLD	Cable Plan	C	NR	NR	NR	NR	NR
3	FDP	Detail FDP/Tie DP	Table with FDP & Tie DP Detail	C	C	C	NR	NR	NR
		FDP, Tie DP Boundary	Polygon on Map for landed or Building image for Highrise showing area covered by each FDP	C	C	C	NR	NR	NR
4	Pole	Plan	Location and quantity on Map	C	C	C	C	C	C
		Illustration	Illustration showing Pole location on picture, table with detail pole type, latlong	C	C	C	C	C	C
5	Civil	Plan	Location and quantity on Map	C	C	C	C	C	C
		Illustration	Illustration showing civil location on picture, table with detail address, latlong	C	C	C	C	C	C
		Civil Manhole Detail	Table with Manhole Detail	C	C	C	C	C	C
6	BOQ & BOM	Detail BOQ	Detail PU item related to project. Show – PU number, quantity and costDetail	C	C	C	C	C	C
		Detail BOM*	Material related to project	C	C	C	C	C	C
7	Costing		Overall cost	C	C	C	C	C	C

*CNC Lite only

1.1 FDC Location & Boundary



Legend:



FDC

1.2 5G Cabinet Details and Illustration

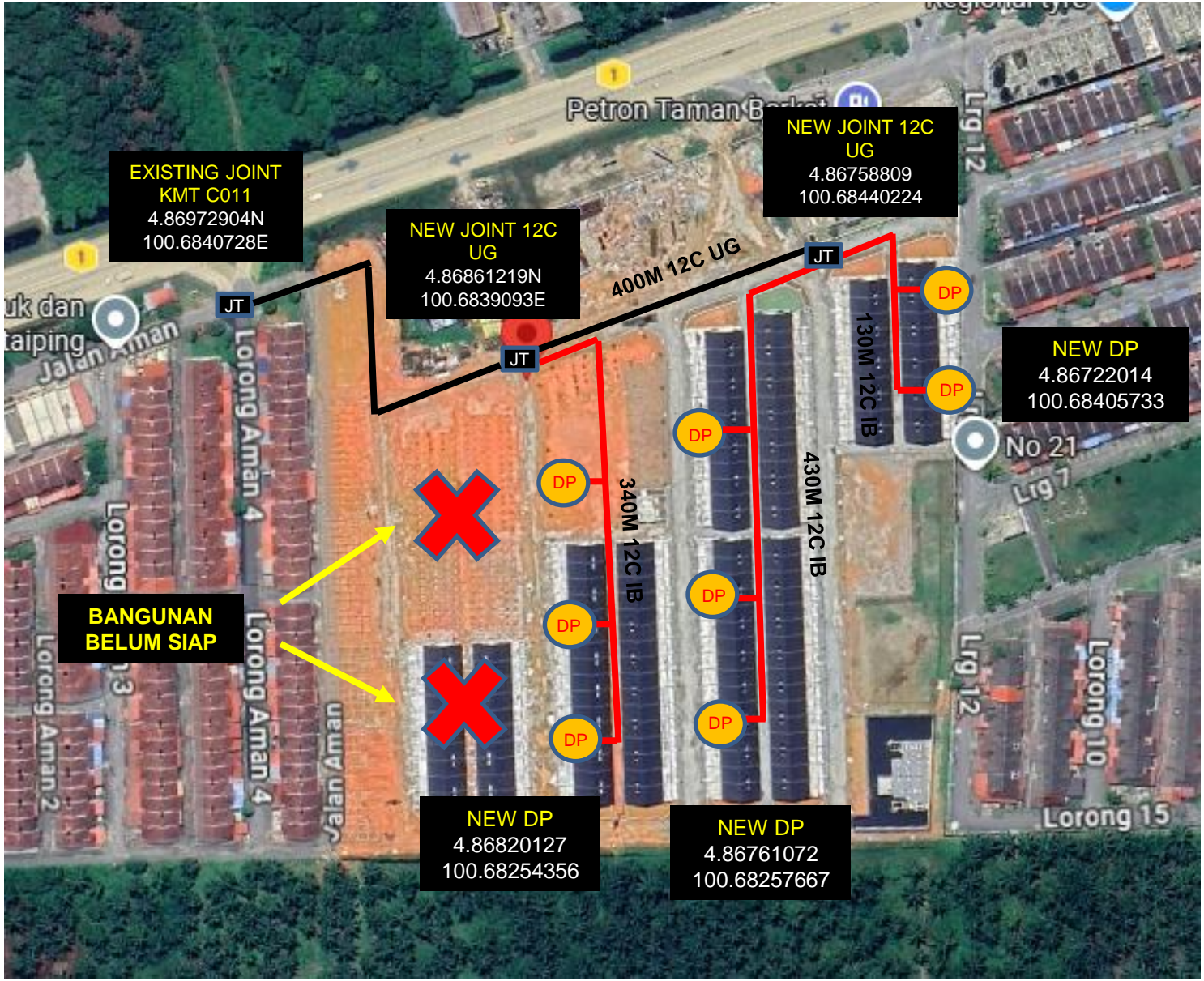
No	Info	Road/Location	Type	Lat/Long
1	5G CABINET		TOWER/CABINET	4.86439836N 100.6861306E

Propose Location



Legend:  5G Cabinet Location

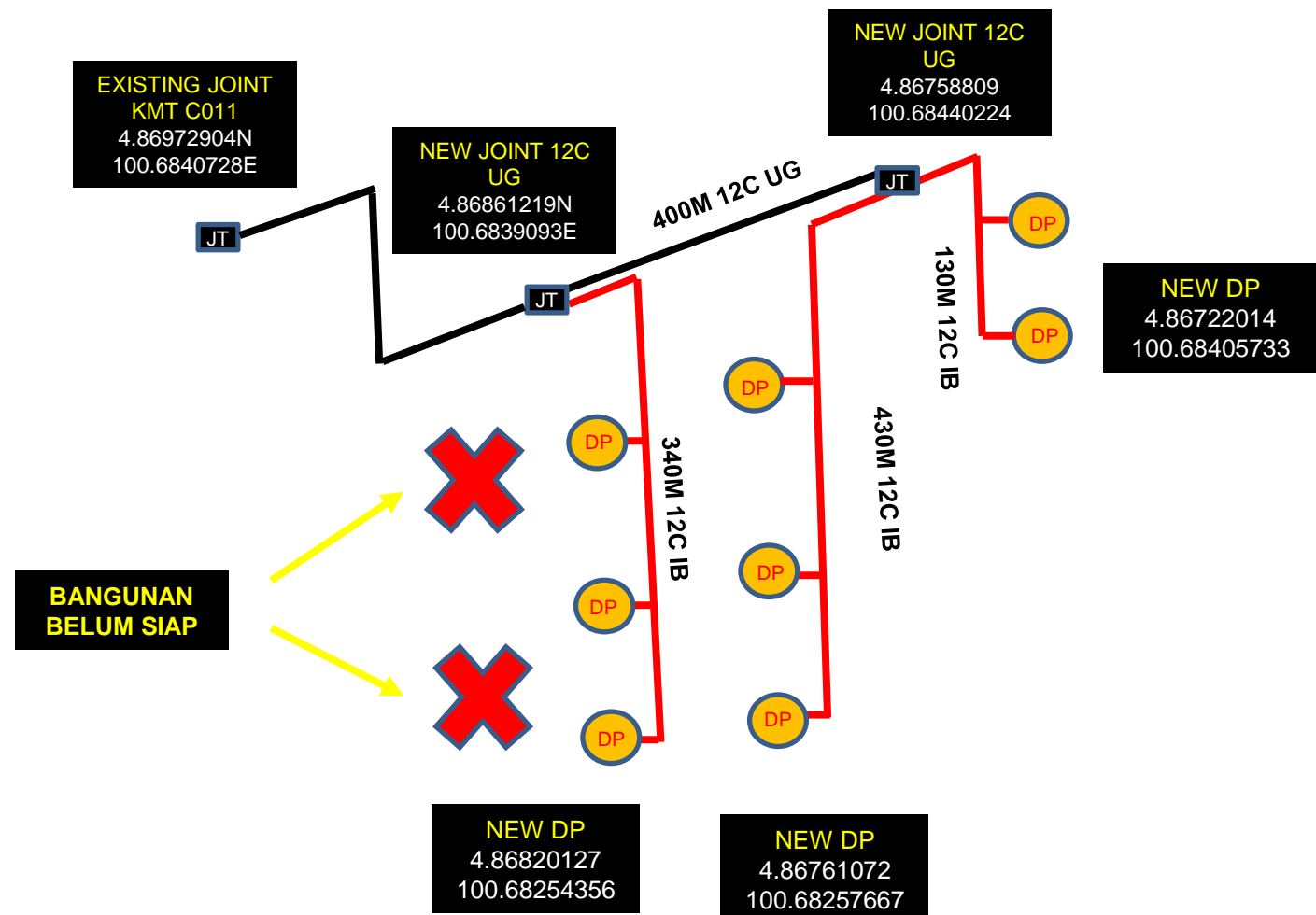
2.1 FDP and FOSC Location Plan



Legend:

	FDC		NEW FDP		JOINT
---	-----	---	---------	---	-------

2.2 SLD



Legend:  FDC  NEW FDP  JOINT

2.5 FDP Details – Normal Project

No	Info	Type	Road/Location	Ports	Properties Covered	Remark
1	DP1	On Pole	BELAKANG RUMAH NO 17/19 LORONG 12, TAMAN JEBONG AMAN, 34700 MATANG PERAK	8	11	NO13,15,17,19,21, Lorong 12 / NO14,16,18,20, Lorong Aman 9, Taman Jebong Aman 34700 Matang Perak
2	DP2	On Pole	BELAKANG RUMAH NO 5/7 LORONG 12, TAMAN JEBONG AMAN, 34700 MATANG PERAK	8	9	NO 1,3,5,7,9,11, Lorong 12 / NO 2,4,6,8,10, Lorong Aman 9, Taman Jebong Aman 34700 Matang Perak
3	DP3	On Pole	BELAKANG RUMAH NO 6/8 LORONG AMAN 8, TAMAN JEBONG AMAN, 34700 MATANG PERAK	8	10	NO 2,4,6,8,10, lorong aman 8 / NO 1,3,5,7,9, lorong aman 9, Taman Jebong Aman 34700 Matang Perak
4	DP4	On Pole	BELAKANG RUMAH NO 22/24 LORONG AMAN 8, TAMAN JEBONG AMAN, 34700 MATANG PERAK	8	13	NO 12,14,16,18,20,22,24, lorong aman 8 / NO 11,13,15,17,19,21,23, lorong aman9, Taman Jebong Aman 34700 Matang Perak
5	DP5	On Pole	BELAKANG RUMAH NO 32/34 LORONG AMAN 8, TAMAN JEBONG AMAN, 34700 MATANG PERAK	8	14	NO 26,28,30,32,34,36, lorong aman 8 / 25,27,29,31,33,35,37,39, lorong aman 9, Taman Jebong Aman 34700 Matang Perak

2.5 FDP Details – Normal Project

No	Info	Type	Road/Location	Ports	Properties Covered	Remark
6	DP6	On Pole	BELAKANG RUMAH NO 44/46 LORONG AMAN 8, TAMAN JEBONG AMAN, 34700 MATANG PERAK	8	9	NO 38,40,42,44,46, lorong aman 8 / 41,43,45,47, lorong aman 9, Taman Jebong Aman 34700 Matang Perak
7	DP7	On Pole	BELAKANG RUMAH NO 50/52 LORONG AMAN 8, TAMAN JEBONG AMAN, 34700 MATANG PERAK	8	10	NO 48,50,52,54,56, lorong aman 8 / 49,51,53,55,57.lorong aman 9, Taman Jebong Aman 34700 Matang Perak
8	DP8	On Pole	BELAKANG RUMAH NO 8/10 LORONG AMAN 7, TAMAN JEBONG AMAN, 34700 MATANG PERAK	8	11	NO 2,4,6,8,10,12, lorong aman 7 / NO 1,3,5,7,9 lorong aman 8, Taman Jebong Aman 34700 Matang Perak
9	DP9	On Pole	BELAKANG RUMAH NO 20/22 LORONG AMAN 7, TAMAN JEBONG AMAN, 34700 MATANG PERAK	8	12	NO 14,16,18,20,22,24, lorong aman 7 / NO 11,13,15,17,19,21, lorong aman 8, Taman Jebong Aman 34700 Matang Perak
10	DP10	On Pole	BELAKANG RUMAH NO 28/30 LORONG AMAN 7, TAMAN JEBONG AMAN, 34700 MATANG PERAK	8	9	NO 26,28,30,32, lorong aman 7 / NO 23,25,27,29,31, lorong aman 8, Taman Jebong Aman 34700 Matang Perak

3.1 New Pole Plan



Legend:



FDC



FDP



FOSC

POLE

3.2 New Pole details

No	POLE ID	Pole Type	GPS Coordinate
1	1	Concrete Pole 7.5m	4.86722014 100.684057
2	2	Concrete Pole 7.5m	4.8672632 100.6844781
3	3	Concrete Pole 7.5m	4.867295 100.684377
4	4	Concrete Pole 7.5m	4.8677814 100.683966
5	5	Concrete Pole 7.5m	4.867822 100.684146
6	6	Concrete Pole 7.5m	4.867757 100.683784
7	7	Concrete Pole 7.5m	4.867725 100.683426
8	8	Concrete Pole 7.5m	4.867706 100.683263
9	9	Concrete Pole 7.5m	4.867647 100.682994
10	10	Concrete Pole 7.5m	4.867619 100.682710
11	11	Concrete Pole 7.5m	4.8676107 100.682576
12	12	Concrete Pole 7.5m	4.868156 100.682579
13	13	Concrete Pole 7.5m	4.868201 100.682959
14	14	Concrete Pole 7.5m	4.8682353 100.683304
15	15	Concrete Pole 7.5m	4.868212 100.683044
16	16	Concrete Pole 7.5m	4.868185 100.682789
17	17	Concrete Pole 7.5m	4.8682012 100.682543
18	18	Concrete Pole 7.5m	4.868123 100.682344

4.1

BIL OF QUANTITY - BOQ



Contract NO	3400049581
Vendor No	1013314
Project No	TMNA/261322
Region	NORTHERN
Exchange	KMT
BOQ Date	06 MAY 2026
LOR ID	PRK-PST-2613345-TP

No	PU ID	PU DESC	RATE	REQ QUANTITY	TOTAL WITH FEE
1	908045	CPP SURU UP TO 152 PORTS (ORI MAX)	464.00	64.00	32,894.26
2	908143	S/I CONCRETE POLE (> 4 POLES) (ORI MAX)	480.28	14.00	7,448.09
3	908144	S/I CNCRTE POLE (UP TO 4 POLES) (ORI MAX)	673.38	4.00	2,983.61
4					
TOTAL COST WITH SST (RM)					43,325.96

Prepared by:	MOHD KHAIRUL ASUAN BIN AHMAD
Company Name:	PROSERINS TECHNOLOGY SDN BHD
Date:	6/05/2026
TP Revision:	0

4.2 BOM SRR FTTH GF KMT_C011 TAMAN JEBONG AMAN_MSB - PRK-PST-2613345-TP

No	Items	Unit	Quantity	Total(RM)
1	CABLE OFC 12C LOOSE IB	M	900	
2	FIBER DP AERIAL CW SP 1X1:8	PCS	8	
3	CABLE OFC 12C LOOSE UG	M	400	
4	CLAMP IB NO.2	PCS	5	
5	HOOK CLAMP IB NO 2A	PCS	5	
6	POLE CONCRETE 7.5M	EA	18	
7	CLAMP POLE HEAD-RING (POLE CONCRETE)	PCS	18	
8	CLAMP POLE CONCRETE	PCS	18	
9	TIE CABLE STAINLESS STEEL 7MM X 335MM (aka JUBLEE)	PCS	40	
10	TIE CABLE STAINLESS STEEL 7MM X 490MM	PCS	40	
11	GRIP PREFORMED 7/1.6	PCS	20	
12	THIMBLE OPEN SMALL	PCS	20	
13	PIPE GI 50MM X 4M C/W COUPLING	PCS	3	
14	RING O SUBDUCT	PCS	48	
15	PVC PLATE	PCS	16	
16	SUBDUCT	M	2310	
17	CLOSURE 12C UG	EA	2	

END OF TECHNICAL PROPOSAL