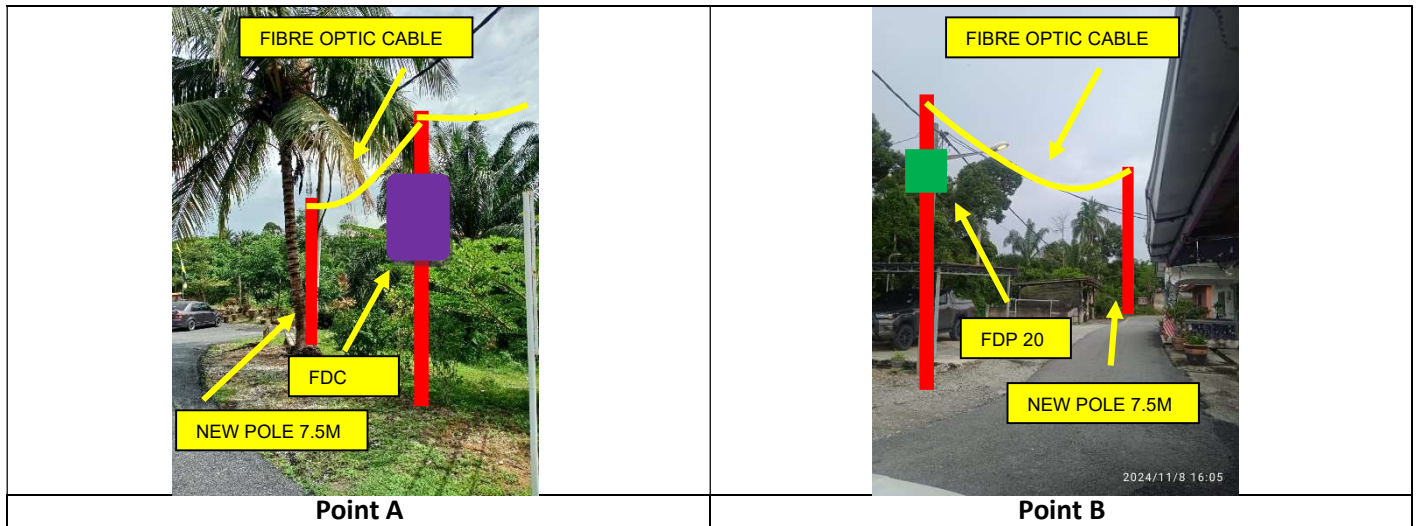


# TECHNICAL PROPOSAL

## POP2 ABA4035-SEKOLAH KEBANGSAAN RKT LASAH (D-SIDE)

**Company Name** : ARATIMUR SDN BHD  
**Company Address** : A-08-13, 8<sup>th</sup> Floor, Block A, Radia Office, Persiaran Singgahsana, 40150 Bukit Jelutong, Shah Alam, Selangor.  
**Prepared By** : Muhammad Danieal Adikha Bin Zaidi  
**Date** : 11/11/2024



**Starting Point**

Site / Boundary Name : SK RKT LASAH  
 Address : Jalan Sekolah, Felda Lasah, Sungai Sipututara, 31100, Perak  
 District : Sungai Siput  
 Postcode : 31100  
 State : Perak  
 GPS Coordinate : 4.927172, 101.071049  
 LRD : A

**End Point**

Site / Boundary Name : Kampung Mor  
 Address : 32 a, Jalan Kampung Melayu, Labu , Felda Lasah, Sungai Sipututara, 31100 Perak  
 District : Sungai Siput  
 Postcode : 31100  
 State : Perak  
 GPS Coordinate : 4.929015, 101.064858  
 LRD : B



PROJEK PENYEDIAAN DAN PENYELENGGARAAN POINT OF PRESENCE (POP) FASA 2: HAB INFRASTRUKTUR GENTIAN OPTIK BERHAMPIRAN DENGAN SEKOLAH, KAWASAN PERINDUSTRIAN, PREMIS KERAJAAN DAN KOMUNITI SEKITARNYA OLEH KEMENTERIAN KOMUNIKASI MALAYSIA – ZON UTARA (KKMM.400-11/17/132(1))



## 1.0 WORK SUMMARY

NO	PROPOSED DISTANCE AND METHOD	UNIT	QUANTITY
1	Horizontal Directional Drilling (HDD)	m	0
2	Carriage Way Open Trench (CW)	m	0
3	Grass Verge Open Trenching (GV)	m	0
4	Micro Trenching (MT)	m	0
Total			0

NO	OTHER INFORMATION	UNIT	QUANTITY
1	Installation of Short Span ADSS Fibre Cables	m	3,220
2	Install New Pole	ea	92
3	Install New JRC7 Manhole	ea	0
4	Install GI Riser 100mm	ea	0
5	Install Fiber Distribution Point and Closure (Splicing, Termination and Testing)	ea	23
6	Estimated Time Required for Completion	days	30



PROJEK PENYEDIAAN DAN PENYELENGGARAAN POINT OF PRESENCE (POP) FASA 2: HAB INFRASTRUKTUR GENTIAN OPTIK BERHAMPIRAN DENGAN SEKOLAH, KAWASAN PERINDUSTRIAN, PREMIS KERAJAAN DAN KOMUNITI SEKITARNYA OLEH KEMENTERIAN KOMUNIKASI MALAYSIA – ZON UTARA (KKMM.400-11/17/132(1))



## 2.0 LOCAL AUTHORITY SUMMARY

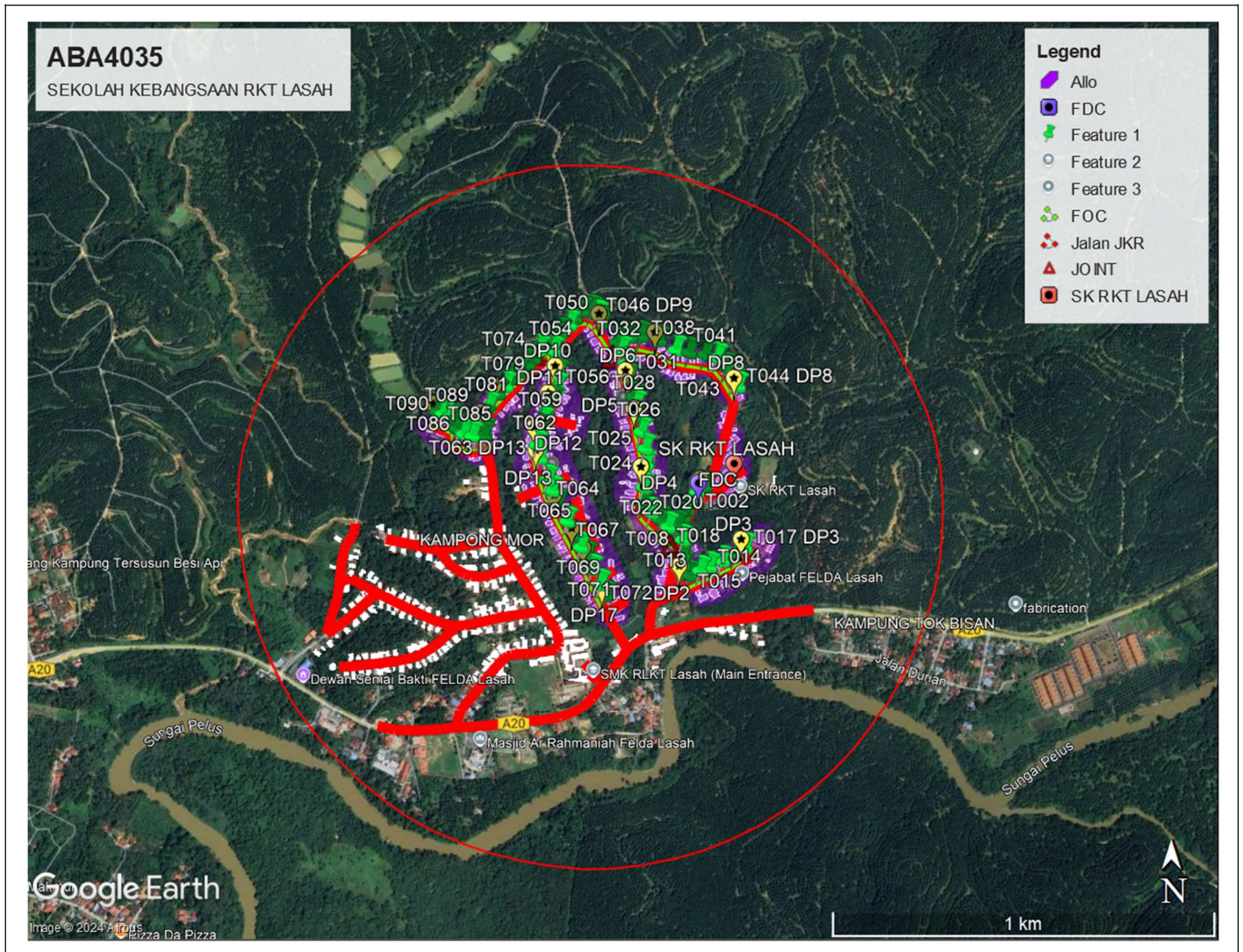
Daerah Kuala Kangsar

NO	ITEMS	Owner	Quantity	Distance (m)
1	HDD	JKR	-	-
		Majlis	-	-
		PDT	-	-
2	New Pole	JKR	92	3,220
		Majlis	-	-
		PDT	-	-
<b>Total Distance (m)</b>				<b>3,220</b>

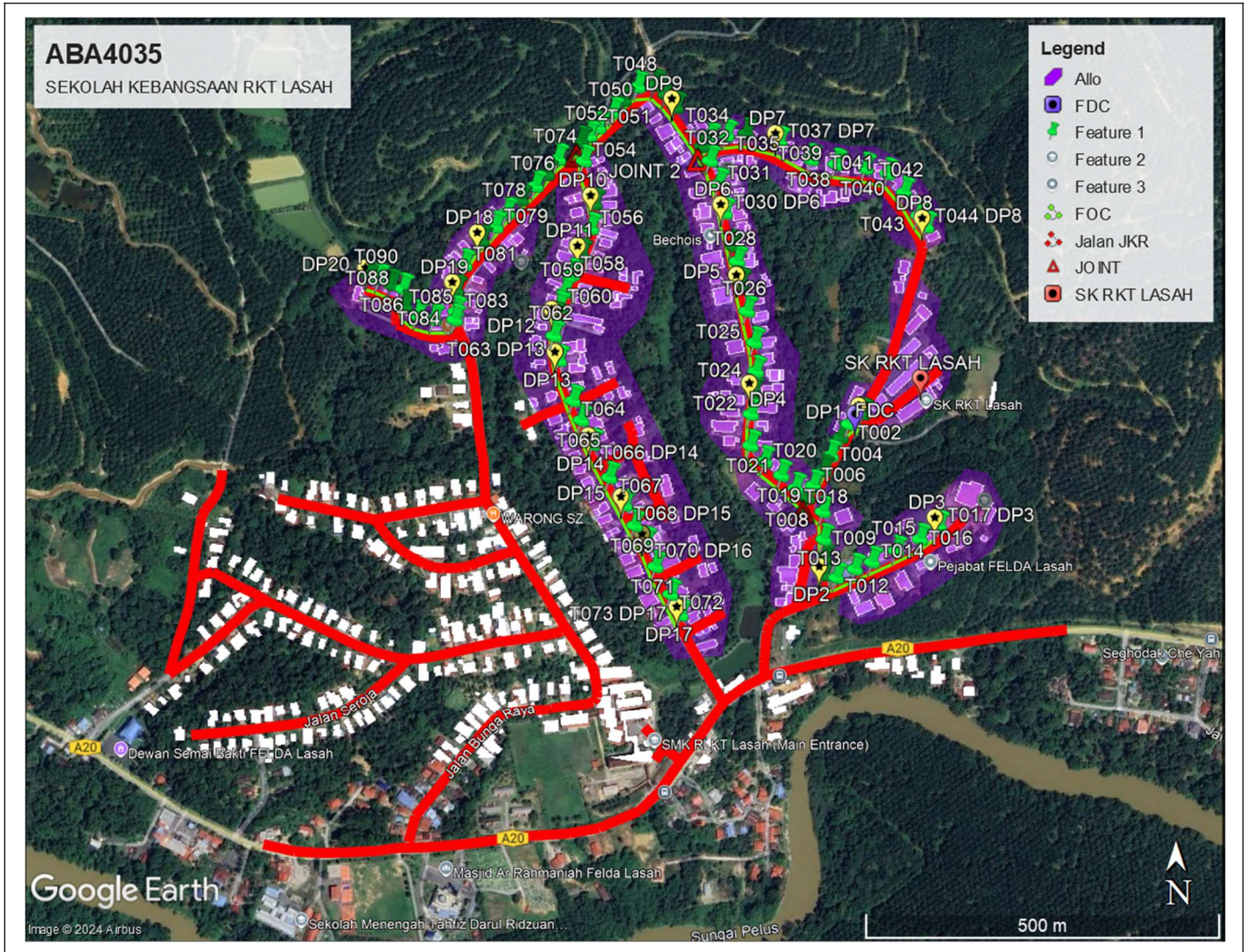
### 3.0 SITE PLAN (KMZ)

#### 3.1 Overview Site Area

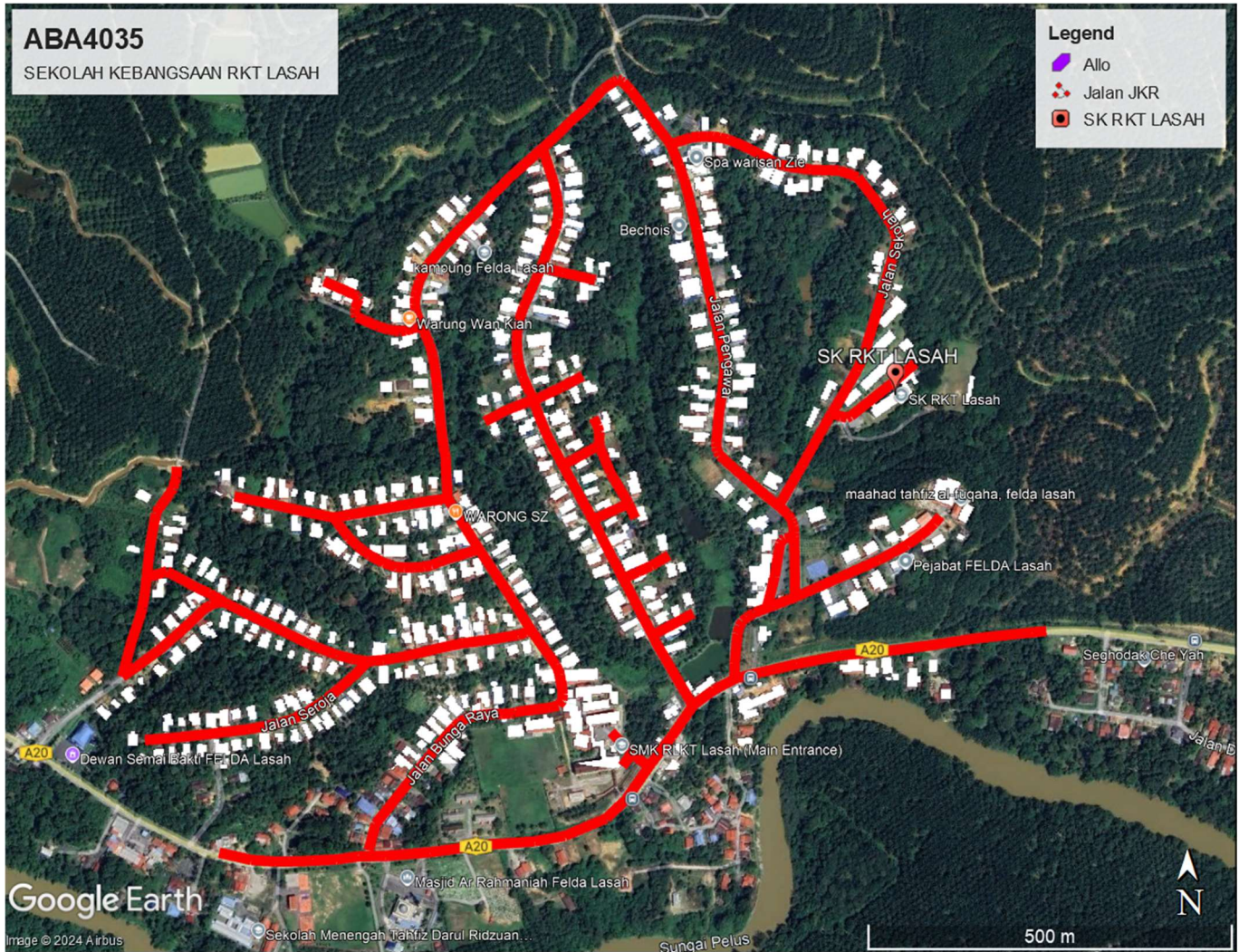
#### 3.2



**3.3 Site Boundary**



**3.3 Road Boundary**



#### 4.0 PROPOSED NEW POLE

No.	Pole Number	Distance (m)	Latitude	Longitude	Local Authority
1	FDC	35	4.927173	101.071049	JKR Daerah Kuala Kangsar
2	T001	35	4.927294	101.071093	JKR Daerah Kuala Kangsar
3	T002	35	4.927199	101.070912	JKR Daerah Kuala Kangsar
4	T003	35	4.926996	101.070825	JKR Daerah Kuala Kangsar
5	T004	35	4.926586	101.070609	JKR Daerah Kuala Kangsar
6	T005	35	4.927184	101.070939	JKR Daerah Kuala Kangsar
7	T006	35	4.92638	101.070473	JKR Daerah Kuala Kangsar
8	T007	35	4.926246	101.0704	JKR Daerah Kuala Kangsar
9	T008	35	4.926065	101.070597	JKR Daerah Kuala Kangsar
10	T009	35	4.925723	101.070607	JKR Daerah Kuala Kangsar
11	T010	35	4.92547	101.070608	JKR Daerah Kuala Kangsar
12	T011	35	4.926533	101.070069	JKR Daerah Kuala Kangsar
13	T012	35	4.925233	101.070768	JKR Daerah Kuala Kangsar
14	T013	35	4.92534	101.071005	JKR Daerah Kuala Kangsar
15	T014	35	4.925436	101.071214	JKR Daerah Kuala Kangsar
16	T015	35	4.925582	101.071515	JKR Daerah Kuala Kangsar
17	T016	35	4.925728	101.071812	JKR Daerah Kuala Kangsar
18	T017	35	4.925884	101.072039	JKR Daerah Kuala Kangsar
19	T018	35	4.926545	101.070061	JKR Daerah Kuala Kangsar
20	T019	35	4.926576	101.070074	JKR Daerah Kuala Kangsar
21	T020	35	4.92672	101.06986	JKR Daerah Kuala Kangsar
22	T021	35	4.926913	101.06969	JKR Daerah Kuala Kangsar
23	T022	35	4.927296	101.069677	JKR Daerah Kuala Kangsar
24	T023	35	4.927605	101.069714	JKR Daerah Kuala Kangsar
25	T024	35	4.927853	101.069751	JKR Daerah Kuala Kangsar
26	T025	35	4.928115	101.069851	JKR Daerah Kuala Kangsar
27	T026	35	4.928599	101.069633	JKR Daerah Kuala Kangsar
28	T027	35	4.92894	101.069549	JKR Daerah Kuala Kangsar
29	T028	35	4.929221	101.069513	JKR Daerah Kuala Kangsar
30	T029	35	4.929416	101.069461	JKR Daerah Kuala Kangsar
31	T030	35	4.930198	101.069275	JKR Daerah Kuala Kangsar
32	T031	35	4.930196	101.069273	JKR Daerah Kuala Kangsar
33	T032	35	4.930469	101.069158	JKR Daerah Kuala Kangsar
34	T033	35	4.930788	101.069374	JKR Daerah Kuala Kangsar
35	T034	35	4.930755	101.069159	JKR Daerah Kuala Kangsar
36	T035	35	4.930814	101.069382	JKR Daerah Kuala Kangsar
37	T036	35	4.930809	101.069627	JKR Daerah Kuala Kangsar
38	T037	35	4.930716	101.07004	JKR Daerah Kuala Kangsar
39	T038	35	4.930478	101.070444	JKR Daerah Kuala Kangsar
40	T039	35	4.930422	101.070747	JKR Daerah Kuala Kangsar

No.	Pole Number	Distance (m)	Latitude	Longitude	Local Authority
41	T040	35	4.930364	101.071113	JKR Daerah Kuala Kangsar
42	T041	35	4.930300	101.071399	JKR Daerah Kuala Kangsar
43	T042	35	4.930071	101.071593	JKR Daerah Kuala Kangsar
44	T043	35	4.929766	101.071768	JKR Daerah Kuala Kangsar
45	T044	35	4.929628	101.071878	JKR Daerah Kuala Kangsar
46	T045	35	4.931135	101.068747	JKR Daerah Kuala Kangsar
47	T046	35	4.931289	101.068615	JKR Daerah Kuala Kangsar
48	T047	35	4.931398	101.068471	JKR Daerah Kuala Kangsar
49	T048	35	4.931379	101.068259	JKR Daerah Kuala Kangsar
50	T049	35	4.931220	101.068082	JKR Daerah Kuala Kangsar
51	T050	35	4.931064	101.067933	JKR Daerah Kuala Kangsar
52	T051	35	4.930883	101.067757	JKR Daerah Kuala Kangsar
53	T052	35	4.930776	101.067659	JKR Daerah Kuala Kangsar
54	T053	35	4.930706	101.067541	JKR Daerah Kuala Kangsar
55	T054	35	4.930471	101.067575	JKR Daerah Kuala Kangsar
56	T055	35	4.929918	101.067722	JKR Daerah Kuala Kangsar
57	T056	35	4.929614	101.067666	JKR Daerah Kuala Kangsar
58	T057	35	4.929294	101.067553	JKR Daerah Kuala Kangsar
59	T058	35	4.929046	101.067435	JKR Daerah Kuala Kangsar
60	T059	35	4.928822	101.067343	JKR Daerah Kuala Kangsar
61	T060	35	4.928615	101.067277	JKR Daerah Kuala Kangsar
62	T061	35	4.928521	101.067230	JKR Daerah Kuala Kangsar
63	T062	35	4.928280	101.067201	JKR Daerah Kuala Kangsar
64	T063	35	4.927970	101.067268	JKR Daerah Kuala Kangsar
65	T064	35	4.927465	101.067440	JKR Daerah Kuala Kangsar
66	T065	35	4.927205	101.067542	JKR Daerah Kuala Kangsar
67	T066	35	4.926921	101.067682	JKR Daerah Kuala Kangsar
68	T067	35	4.926502	101.067891	JKR Daerah Kuala Kangsar
69	T068	35	4.926153	101.068084	JKR Daerah Kuala Kangsar
70	T069	35	4.925904	101.068207	JKR Daerah Kuala Kangsar
71	T070	35	4.925694	101.068341	JKR Daerah Kuala Kangsar
72	T071	35	4.925379	101.068472	JKR Daerah Kuala Kangsar
73	T072	35	4.925037	101.068677	JKR Daerah Kuala Kangsar
74	T073	35	4.924760	101.068814	JKR Daerah Kuala Kangsar
75	T074	35	4.930552	101.067243	JKR Daerah Kuala Kangsar
76	T075	35	4.930337	101.067132	JKR Daerah Kuala Kangsar
77	T076	35	4.930184	101.066980	JKR Daerah Kuala Kangsar
78	T077	35	4.930009	101.066770	JKR Daerah Kuala Kangsar
79	T078	35	4.929846	101.066608	JKR Daerah Kuala Kangsar
80	T079	35	4.929660	101.066465	JKR Daerah Kuala Kangsar
81	T080	35	4.929488	101.066304	JKR Daerah Kuala Kangsar
82	T081	35	4.929184	101.066073	JKR Daerah Kuala Kangsar



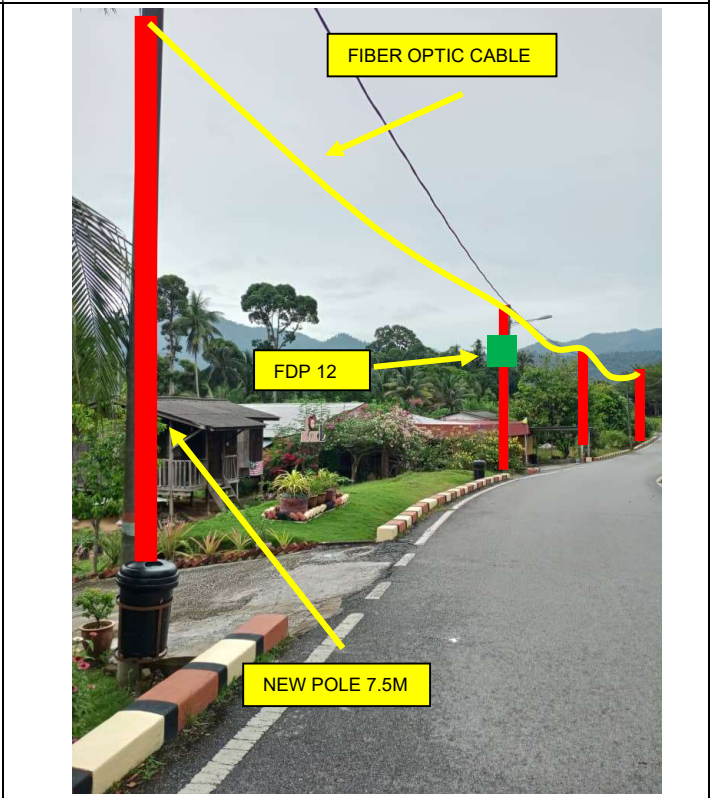
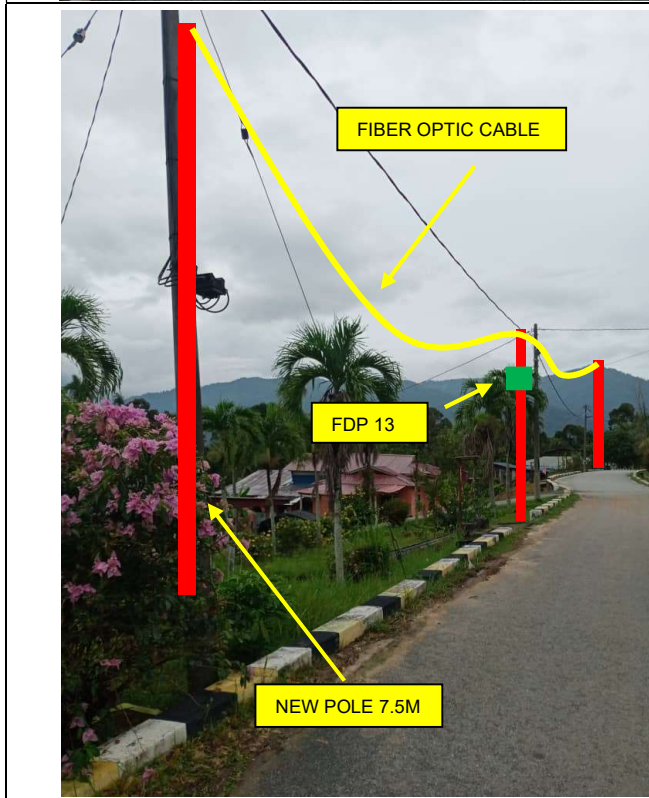
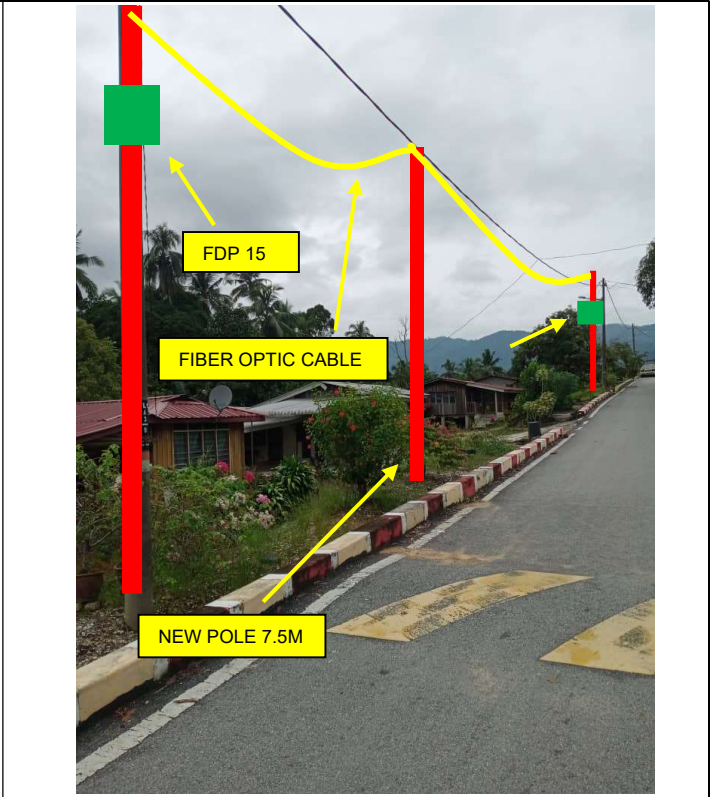
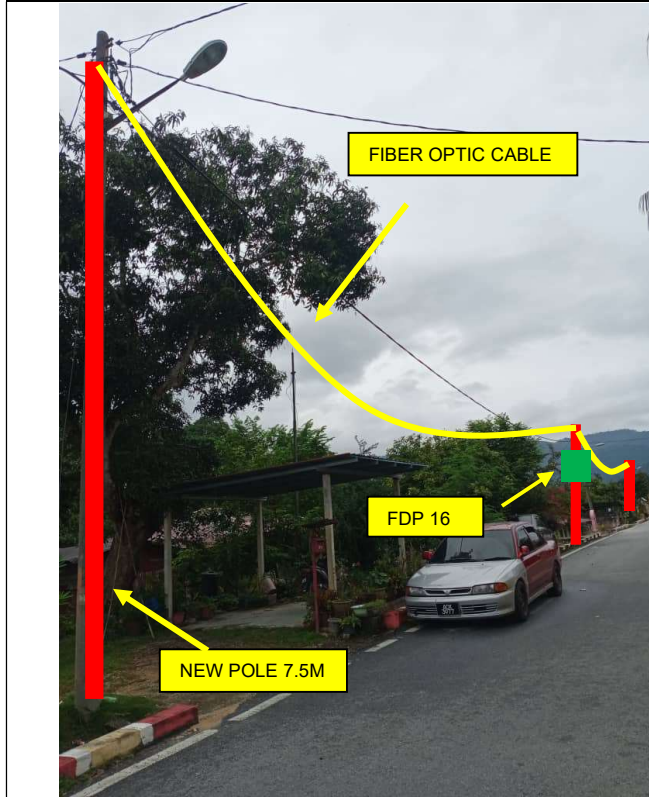
PROJEK PENYEDIAAN DAN PENYELENGGARAAN POINT OF PRESENCE (POP) FASA 2: HAB INFRASTRUKTUR GENTIAN OPTIK BERHAMPIRAN DENGAN SEKOLAH, KAWASAN PERINDUSTRIAN, PREMIS KERAJAAN DAN KOMUNITI SEKITARNYA OLEH KEMENTERIAN KOMUNIKASI MALAYSIA – ZON UTARA (KKMM.400-11/17/132(1))

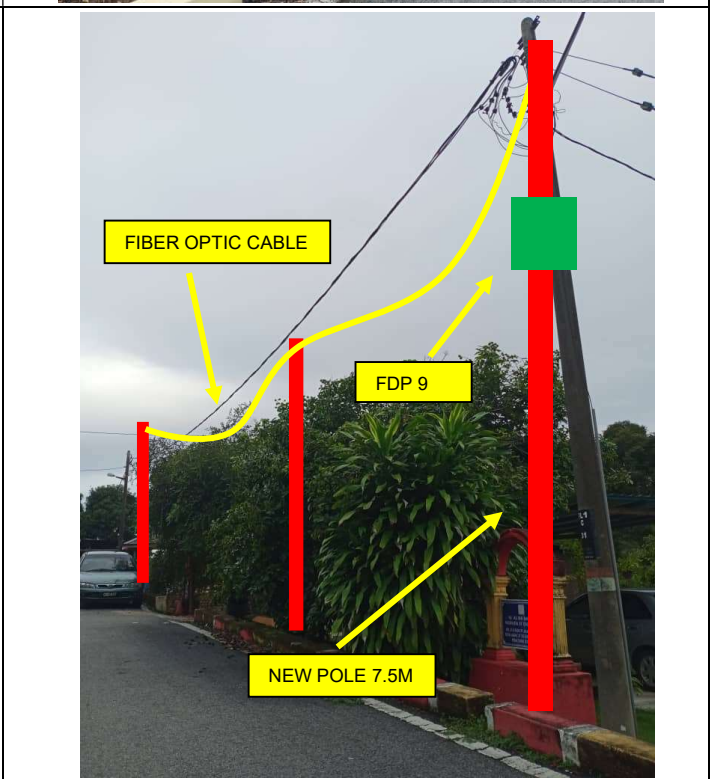
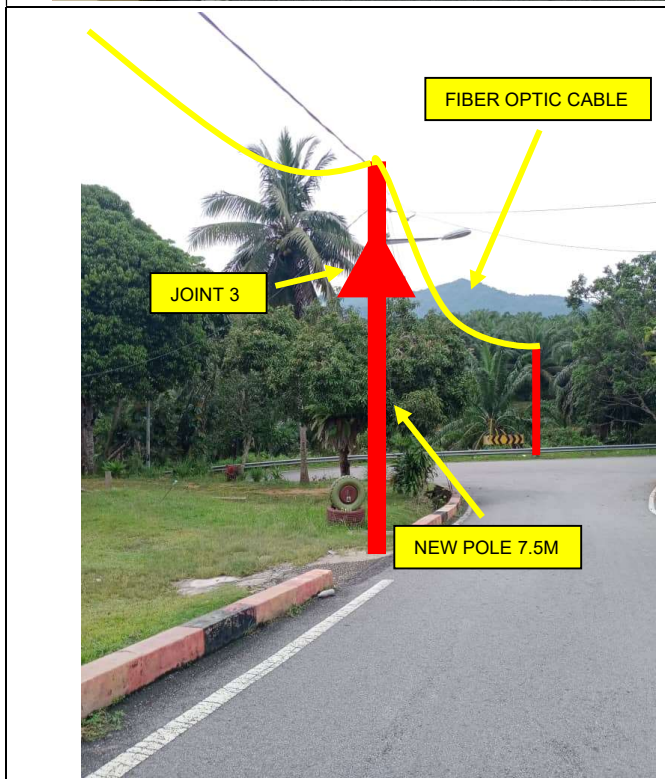
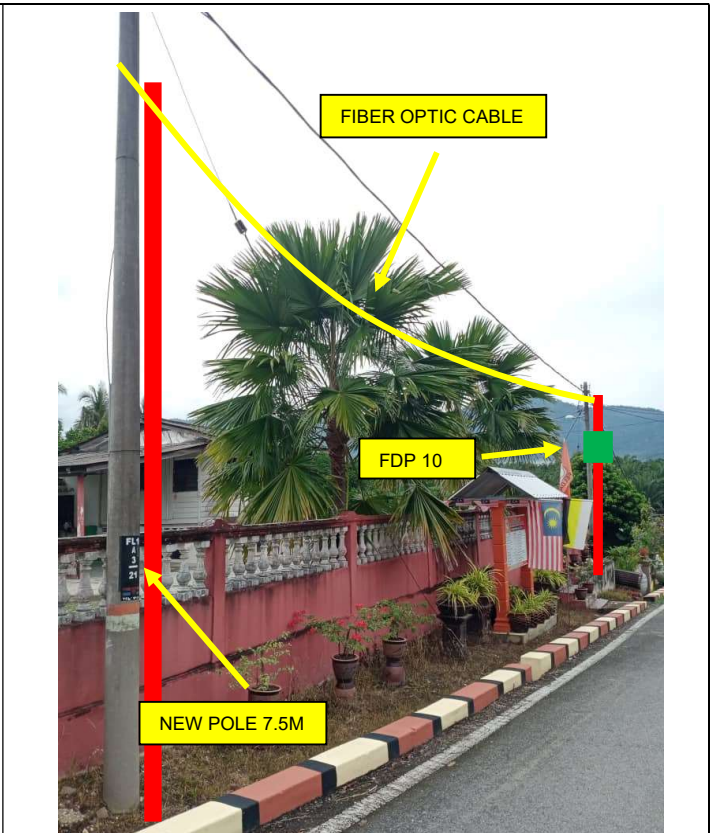
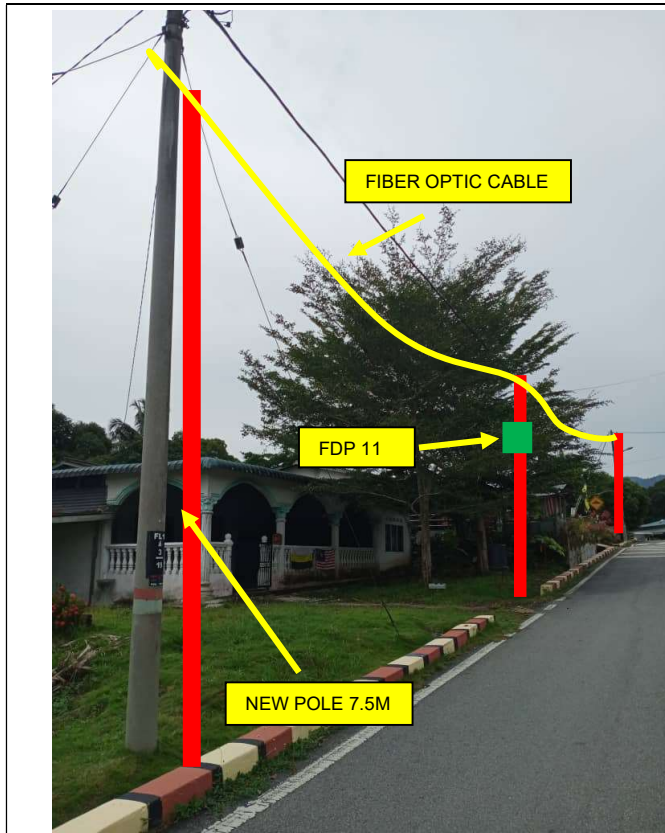


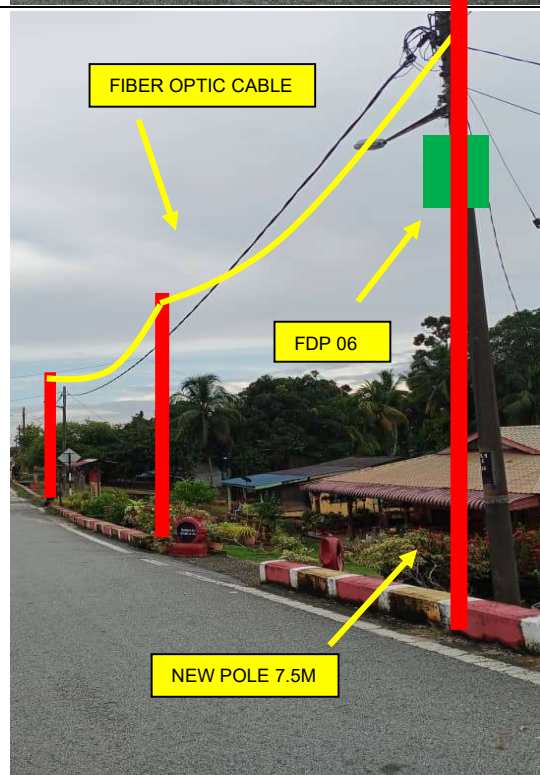
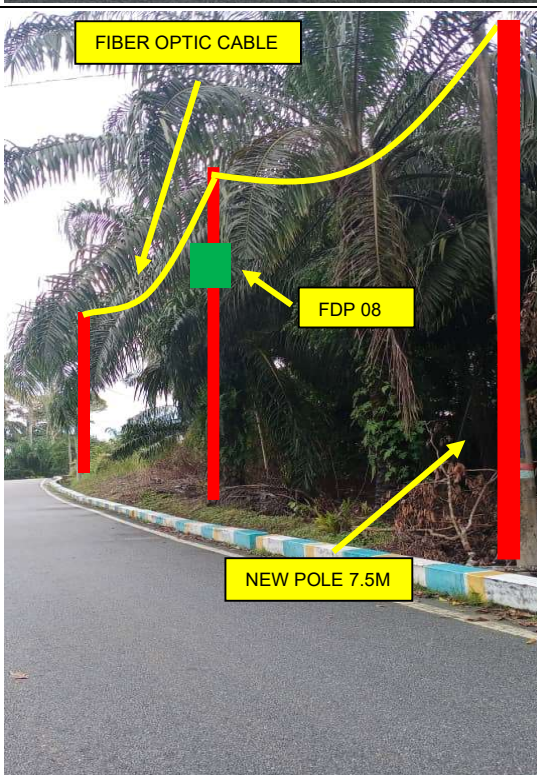
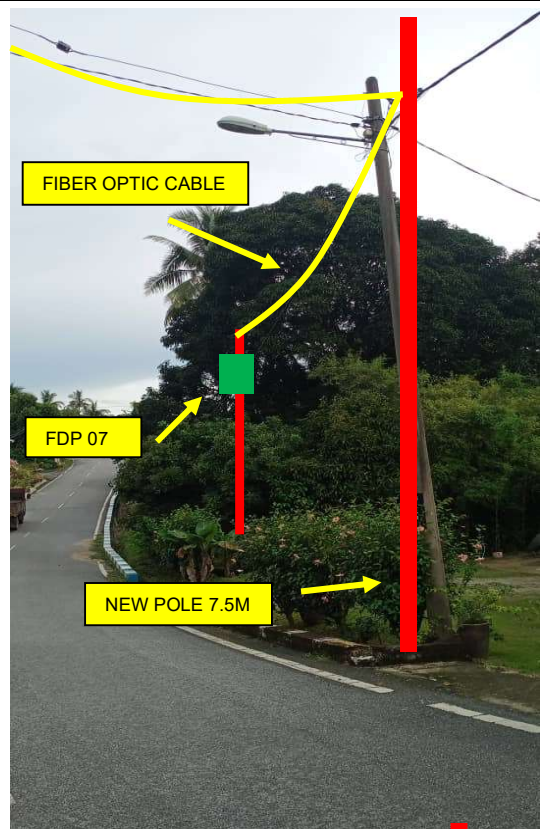
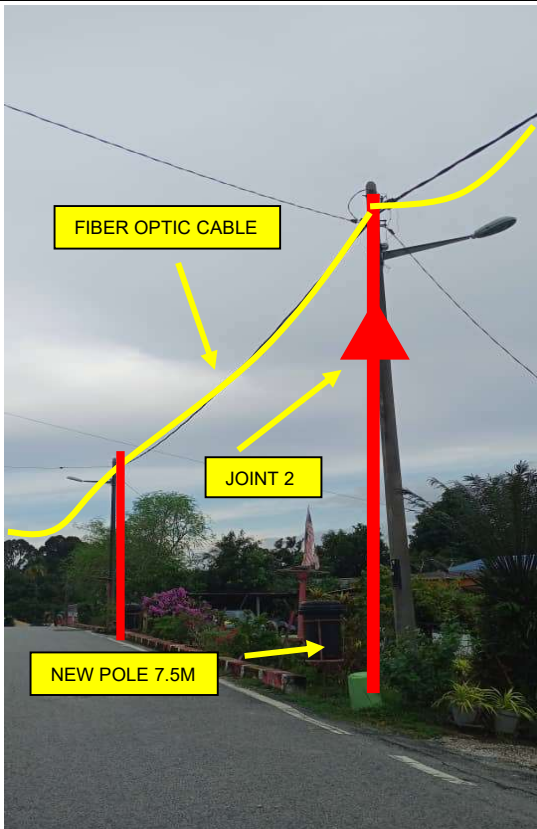
No.	Pole Number	Distance (m)	Latitude	Longitude	Local Authority
83	T082	35	4.928863	101.065978	JKR Daerah Kuala Kangsar
84	T083	35	4.928628	101.065984	JKR Daerah Kuala Kangsar
85	T084	35	4.928522	101.065956	JKR Daerah Kuala Kangsar
86	T085	35	4.928536	101.065683	JKR Daerah Kuala Kangsar
87	T086	35	4.928570	101.065476	JKR Daerah Kuala Kangsar
88	T087	35	4.928682	101.065329	JKR Daerah Kuala Kangsar
89	T088	35	4.928908	101.065309	JKR Daerah Kuala Kangsar
90	T089	35	4.928943	101.065165	JKR Daerah Kuala Kangsar
91	T090	35	4.929029	101.064992	JKR Daerah Kuala Kangsar
92	T091	35	4.929069	101.064874	JKR Daerah Kuala Kangsar

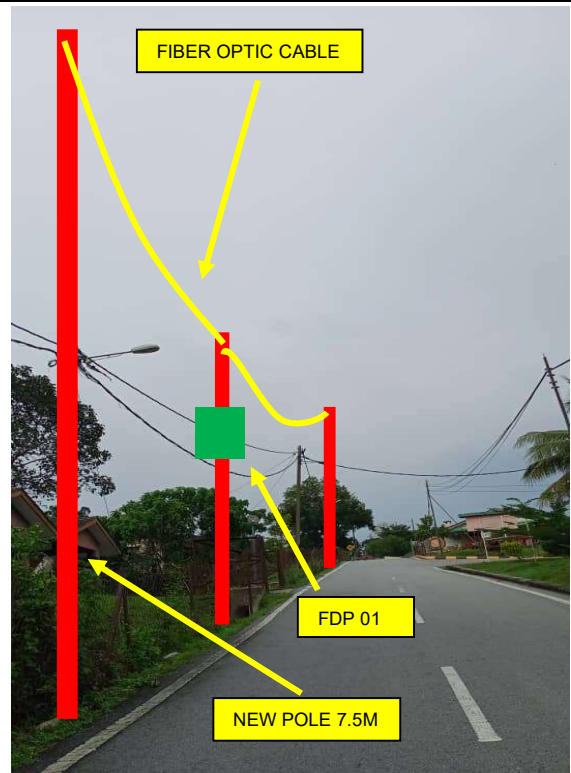
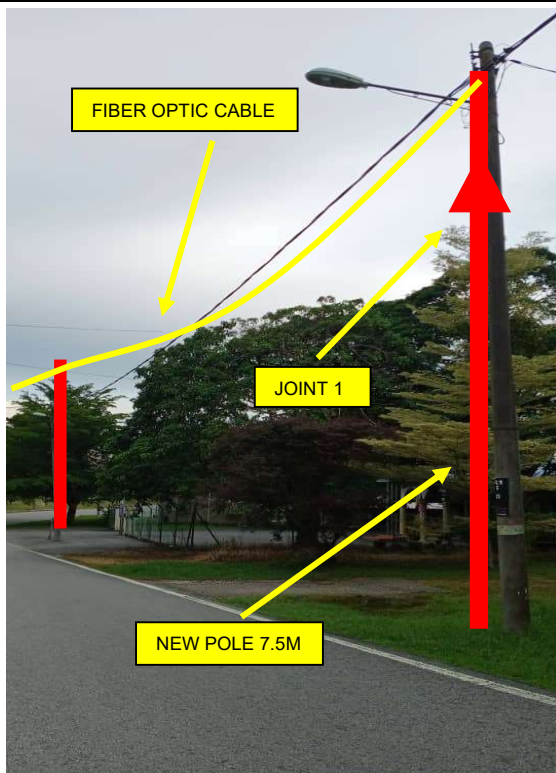
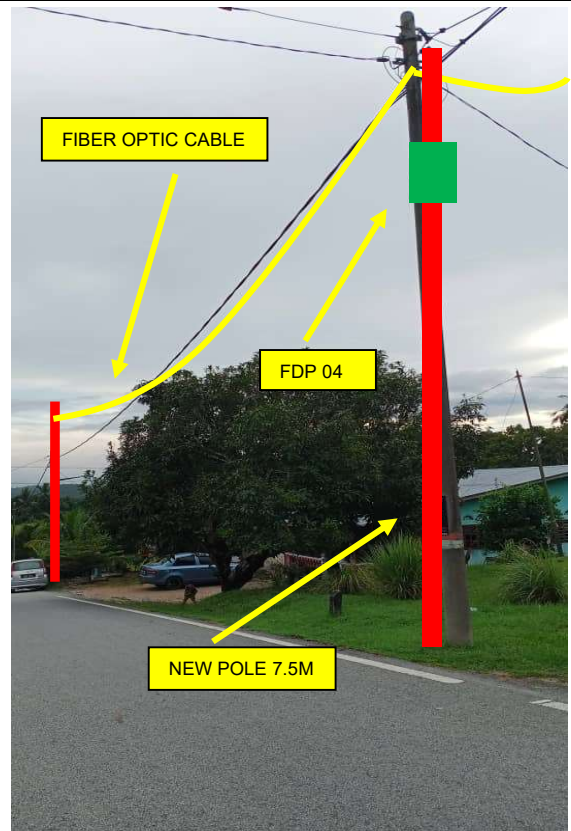
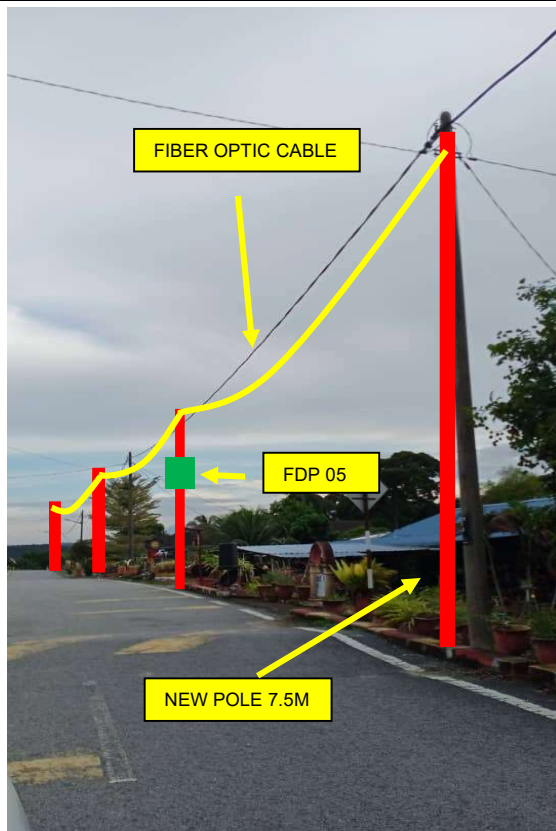
**5.0 SITE PHOTOS - PROPOSED NEW POLE**











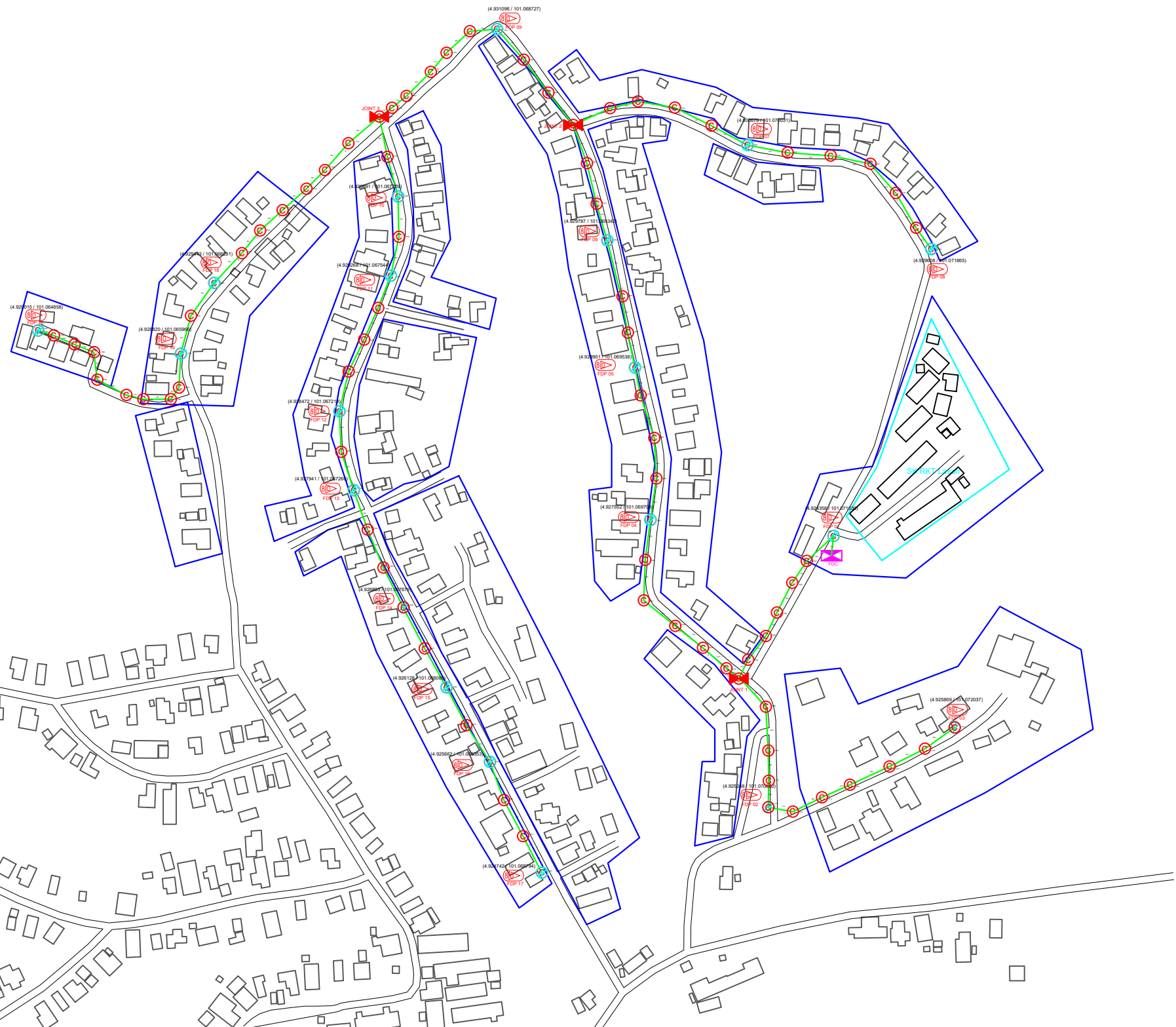
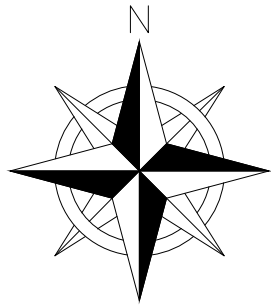


PROJEK PENYEDIAAN DAN PENYELENGGARAAN POINT OF PRESENCE (POP) FASA 2: HAB INFRASTRUKTUR GENTIAN OPTIK BERHAMPIRAN DENGAN SEKOLAH, KAWASAN PERINDUSTRIAN, PREMIS KERAJAAN DAN KOMUNITI SEKITARNYA OLEH KEMENTERIAN KOMUNIKASI MALAYSIA – ZON UTARA (KKMM.400-11/17/132(1))



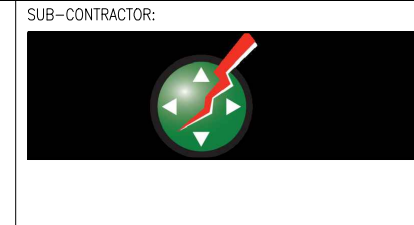
## 6.0 3<sup>rd</sup> PARTIES DEPENDENCIES

NO	LOCAL COUNCIL / AUTHORITY	REMARK
1	Majlis Daerah Kuala Kangsar	-
2	JKR Daerah Kuala Kangsar	3,220m



12C FOC		Installed 1:4 / 1:8 splitter	● Existing TNB Pole	0	● Pole Ring	20	— Micro-Trenching (Meter)	# Active Outdoor Numbering	CL01 Closure NO.
24C FOC	3185m	⊗ FDC	○ Installed Riser	1	⊗ New Manhole (PIT)		— Temporary Infra (Meter)	NBD# FDC NO.	DP1 FDP NO.
48C FOC		⊗ Closure	⊗ FDP with (1:8) splitter	20	⊗ New Manhole(JRC7)		— FDP Boundary	MH1 MH NO.	
96C FOC		○ Installed Pole (9m)	s Suspension	56	○ Existing Manhole		— HDD (Meter)	TKS-1 Existing TNB Pole NO.	
144C FOC		⊙ Installed Pole (7.5m)	↑ Tension	69	○ Loop / Coil (Meter)		— Open Cut (Meter)	P001 New Pole NO.	

ACTUAL HOMEPASS : 160

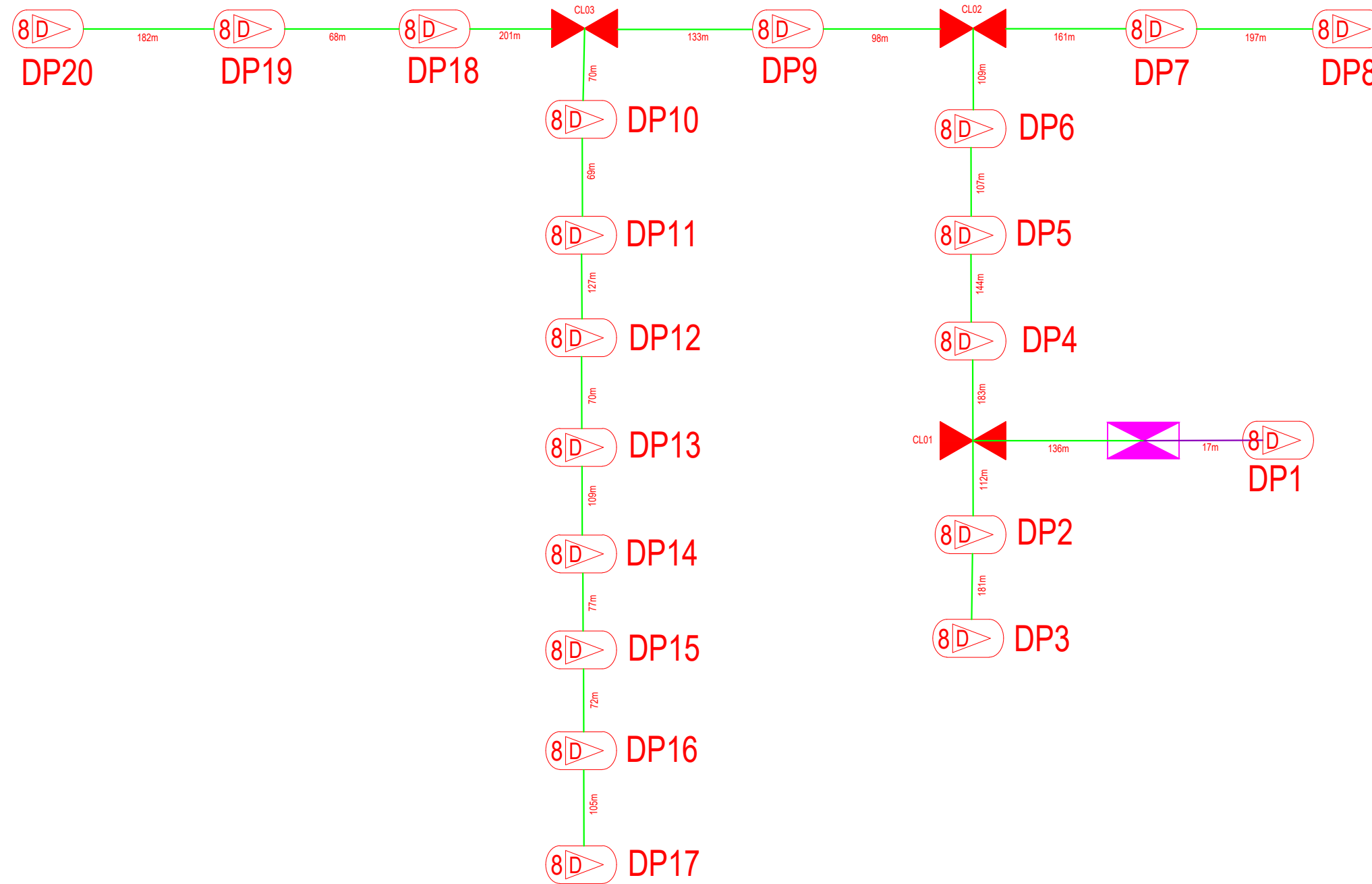


PROJECT TITLE:  
**CONTRACT FOR THE PROVISION OF SUPPLY, INSTALLATION AND COMMISSIONING OF FTTX NETWORK INFRASTRUCTURE ABA4035 - SEKOLAH RKT LASAH**

DRAWING TITLE:  
**CONSTRUCTION DRAWING - SK RKT LASAH**

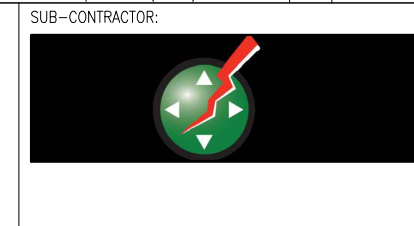
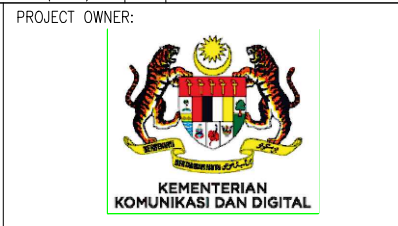
PROJECT PHASE:

Design By : M. IZZUDDIN	Date : 21 NOVEMBER 2024
Drawn By : M. IZZUDDIN	Scale :
Checked By :	Job Number :
DRAWING NUMBER :	Sheet : 1 / 1
THIS PRINT AND ITS COPYRIGHT ARE THE PROPERTY OF ALLO TECHNOLOGY SDN BHD	
Size :	



12C FOC		Installed 1:4 / 1:8 splitter	● Existing TNB Pole	0	⚙️ Pole Ring	20	📏 Micro-Trenching (Meter)	# Active Outdoor Numbering	CL01 Closure NO.
24C FOC	3185m	⚡ FDC	○ Installed Riser	1	🚧 New Manhole (PIT)		📏 Temporary Infra (Meter)	NBD# FDC NO.	DP1 FDP NO.
48C FOC		🚫 Closure	Ⓜ️ FDP with (1:8) splitter	20	🚧 New Manhole(JRC7)		📏 FDP Boundary	MH1 MH NO.	
96C FOC		📍 Installed Pole (9m)	Ⓜ️ Suspension	56	🚧 Existing Manhole		📏 HDD (Meter)	TKS-1 Existing TNB Pole NO.	
144C FOC		📍 Installed Pole (7.5m)	Ⓜ️ Tension	69	📏 Loop / Coil (Meter)		📏 Open Cut (Meter)	P001 New Pole NO.	

ACTUAL HOMEPASS : 160



PROJECT TITLE:  
**CONTRACT FOR THE PROVISION OF SUPPLY, INSTALLATION AND COMMISSIONING OF FTTX NETWORK INFRASTRUCTURE ABA4035 - SEKOLAH RKT LASAH**

DRAWING TITLE:  
**CONSTRUCTION DRAWING - SK RKT LASAH**

PROJECT PHASE:

Design By : M. IZZUDDIN	Date : 21 NOVEMBER 2024
Drawn By : M. IZZUDDIN	Scale :
Checked By :	Job Number :
DRAWING NUMBER :	Sheet : 1 / 1
THIS PRINT AND ITS COPYRIGHT ARE THE PROPERTY OF ALLO TECHNOLOGY SDN BHD	
Size :	