

TECHNICAL PROPOSAL

POP2 ABA9006 SEKOLAH KEBANGSAAN KUALA DIPANG

Company Name	:	WCWL COMMUNICATIONS SDN BHD
Company Address	:	127, Jalan PUJ 3/3, Taman Puncak Jalil 43300 Subang Jaya Selangor
Prepared By	:	Nur Syahidah Izzatie
Date	:	18/11/2024



POINT A

POINT B

Starting Point

Site / Boundary Name	:	SEKOLAH KEBANGSSAN KUALA DIPANG
Address	:	Jalan Kota Baharu,
District	:	Kampar
Postcode	:	31850
State	:	Perak
GPS Coordinate	:	4.380903, 101.159342
LRD	:	A

End Point

Site / Boundary Name	:	SEKOLAH KEBANGSAAN KUALA DIPANG
Address	:	269 Lorong Sekolah
District	:	Kampar
Postcode	:	31700
State	:	Perak
GPS Coordinate	:	4.386906, 101.153613
LRD	:	B



PROJEK PENYEDIAAN DAN PENYELENGGARAAN POINT OF PRESENCE (POP) FASA2: HAB INFRASTRUKTUR GENTIAN OPTIK BERHAMPIRAN DENGAN SEKOLAH, KAWASAN PERINDUSTRIAN, PREMIS KERAJAAN DAN KOMUNITI SEKITARNYA OLEH KEMENTERIAN KOMUNIKASI MALAYSIA – ZON UTARA (KKMM.400-11/17/132(1))



Work Summary

No	Proposed Distance and Method	Unit	Qty
1	Horizontal Directional Drilling (HDD)	m	0
2	Carriage Way Open trench (CW)	m	0
3	Grass Verge Open Trenching (GV)	m	0
4	Micro trenching (MT)	m	0
	Total		0

	Other Information	Unit	Qty
1	Proposed Manhole	EA	0
2	Proposed Pole	EA	120
3	Joint Closure	EA	7
4	Estimated time required for completion	days	30



PROJEK PENYEDIAAN DAN PENYELENGGARAAN POINT OF PRESENCE (POP) FASA2: HAB INFRASTRUKTUR GENTIAN OPTIK BERHAMPIRAN DENGAN SEKOLAH, KAWASAN PERINDUSTRIAN, PREMIS KERAJAAN DAN KOMUNITI SEKITARNYA OLEH KEMENTERIAN KOMUNIKASI MALAYSIA – ZON UTARA (KKMM.400-11/17/132(1))



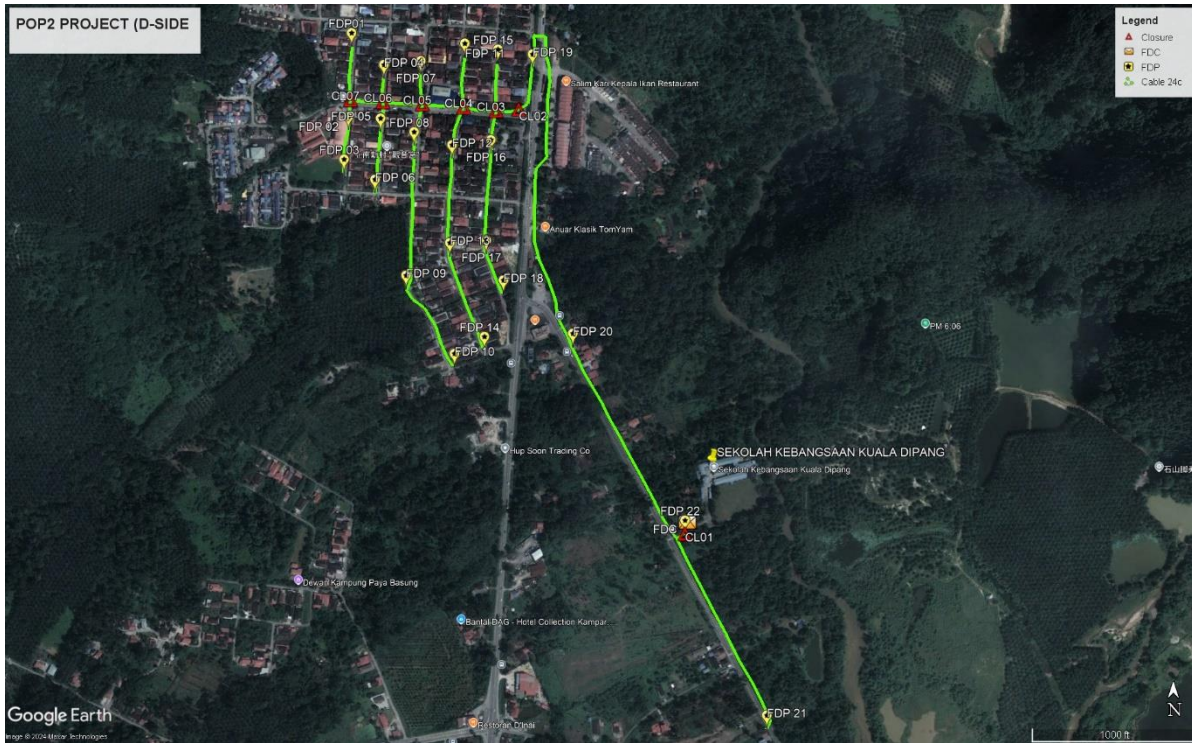
Local Authority Summary

1. Daerah Kampar

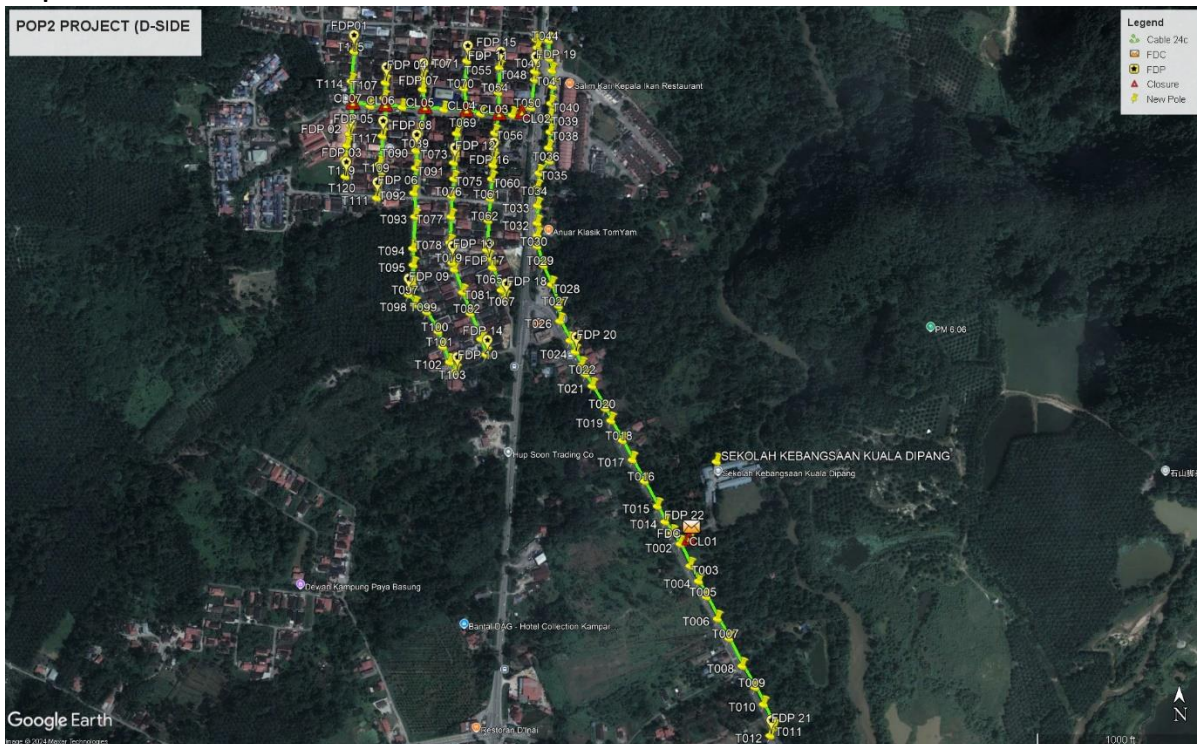
Bil	Items	Owner	Quantity	Distance(m)
1	HDD	JKR	-	-
		Majlis	-	-
		Estate / Private Land	-	-
2	New Pole	JKR	17pcs	476m
		Majlis	103pcs	3410m
		Estate / Private Land	-	-
3	Existing TNB Pole	JKR	-	-
		Majlis	-	-
		Estate / Private Land	-	-
Total				3886m

Site Plan – KMZ (Overview site area)

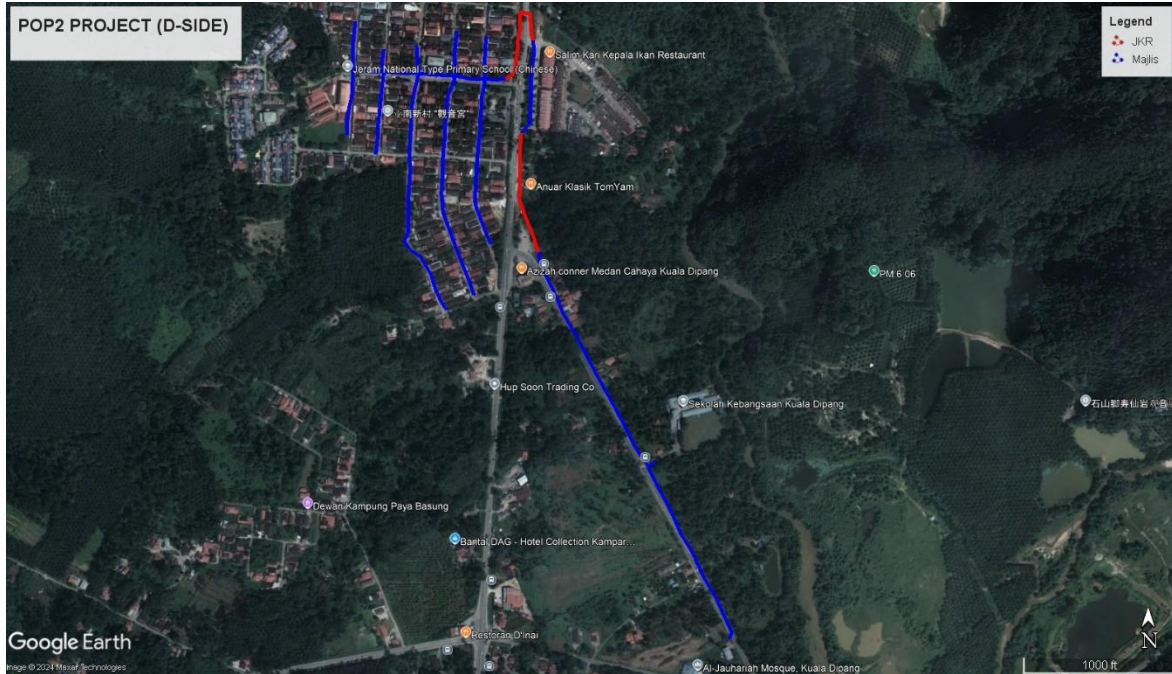
Proposed FDP and Closure



Proposed New Pole



Site Plan – KMZ Routing (All Local Authority)

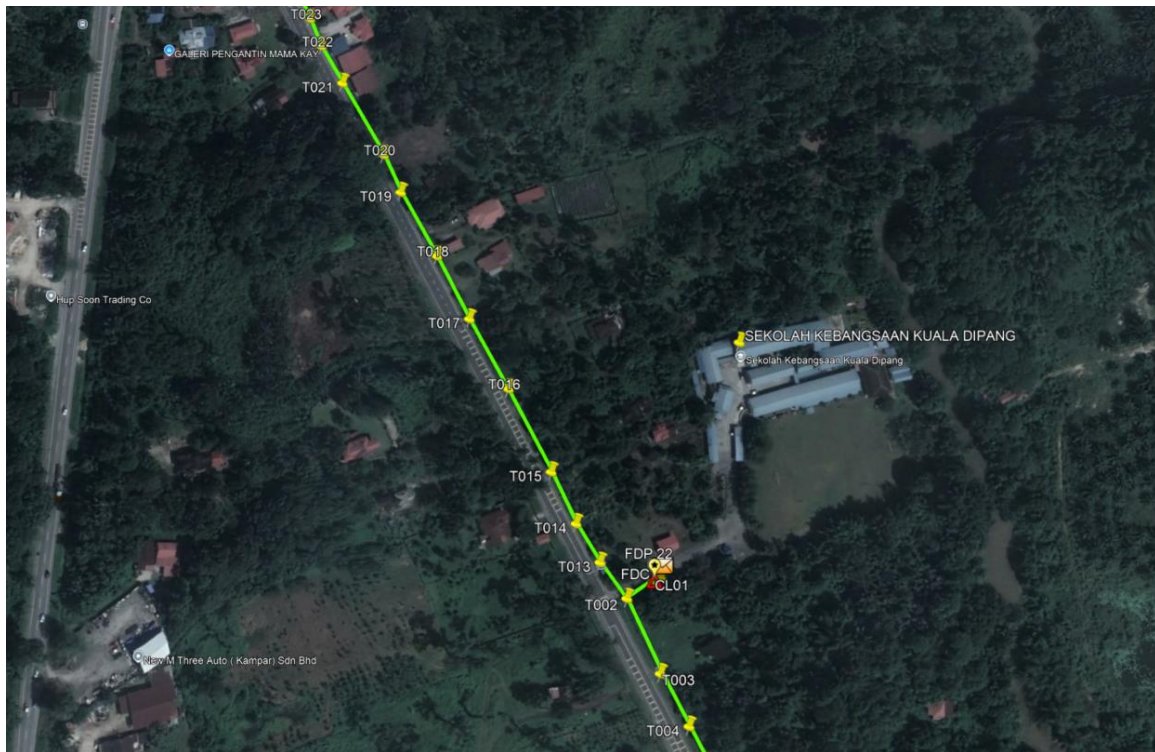
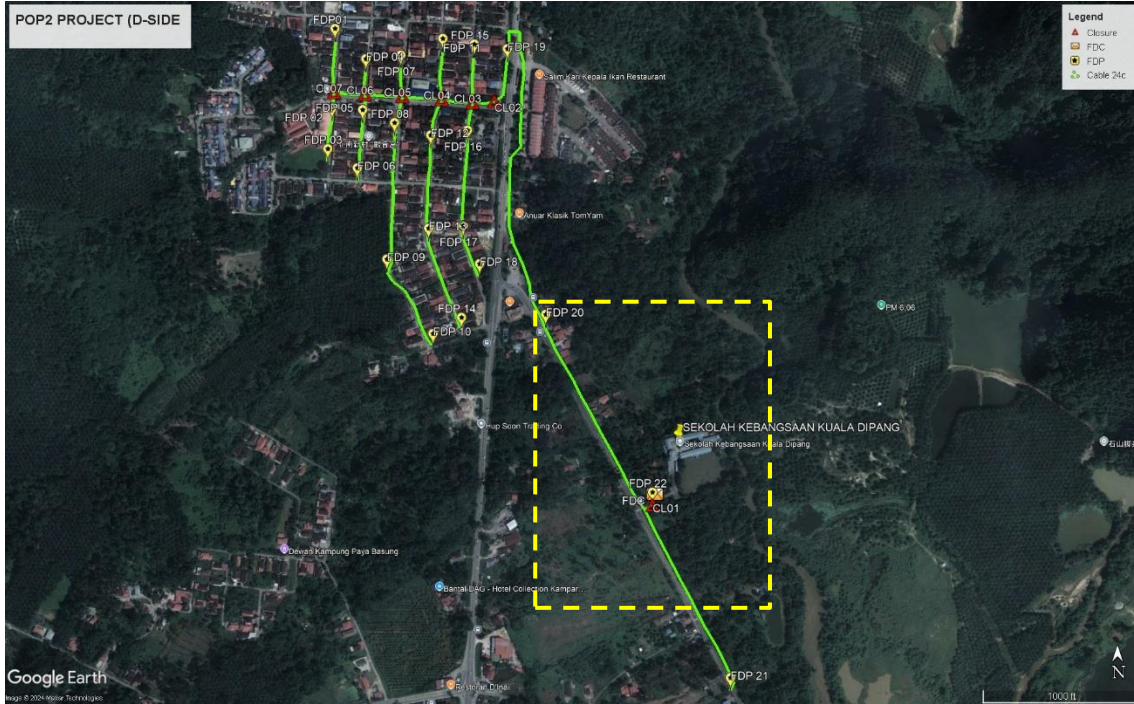


Red - JKR Kampar

Blue - Majlis Perbandaran Kampar

Site Plan – KMZ Routing (All site area)

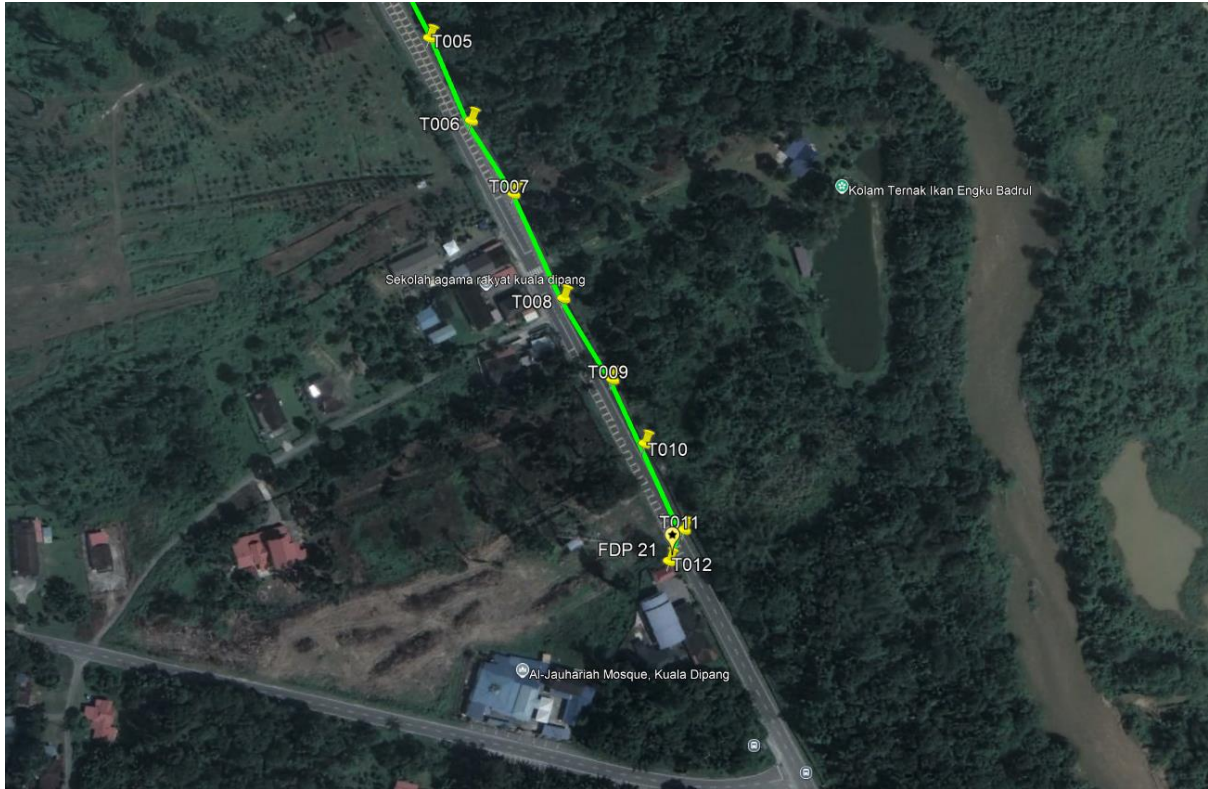
Route 1



Route 1.1

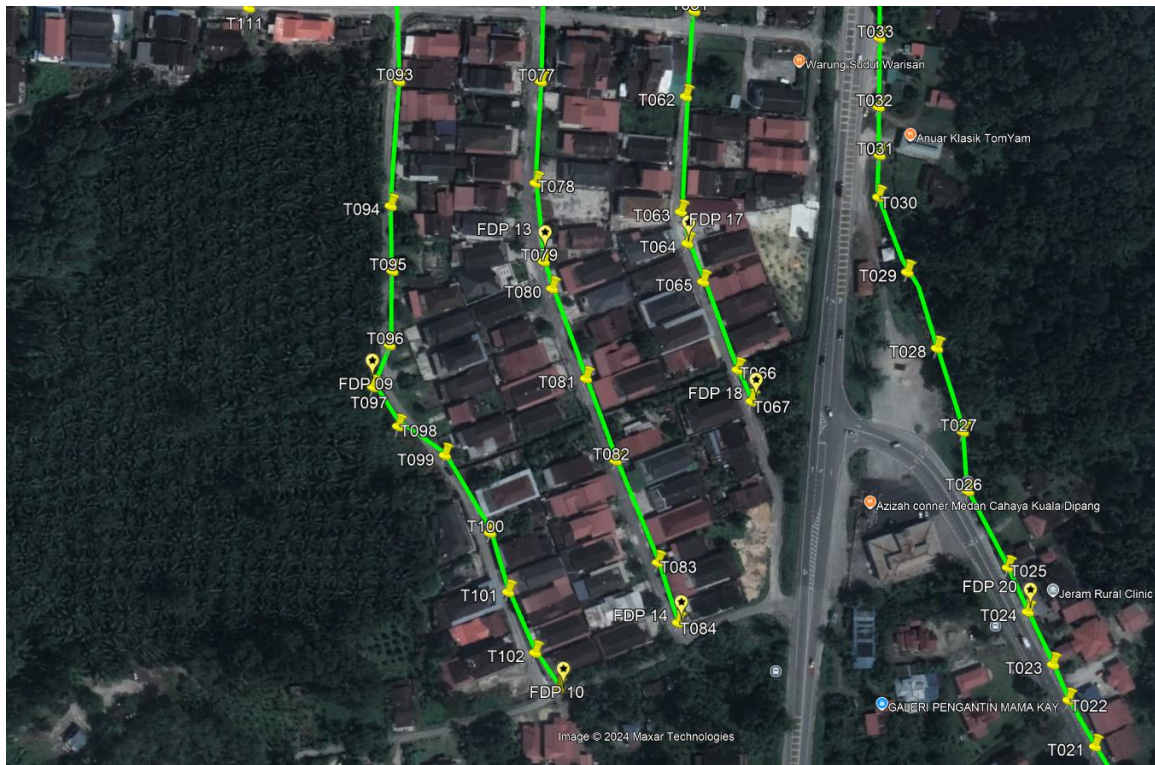
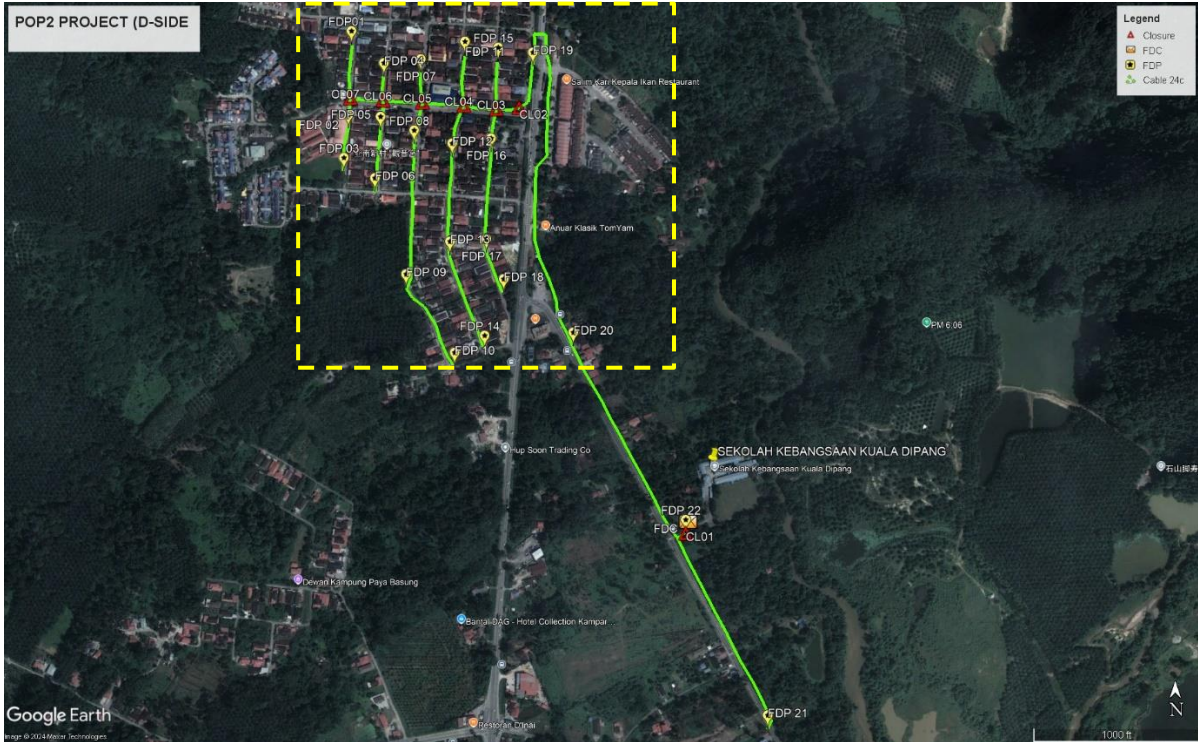


PROJEK PENYEDIAAN DAN PENYELENGGARAAN POINT OF PRESENCE (POP) FASA2: HAB INFRASTRUKTUR GENTIAN OPTIK BERHAMPIRAN DENGAN SEKOLAH, KAWASAN PERINDUSTRIAN, PREMIS KERAJAAN DAN KOMUNITI SEKITARNYA OLEH KEMENTERIAN KOMUNIKASI MALAYSIA – ZON UTARA (KKMM.400-11/17/132(1))



Route 1.2

Route 2

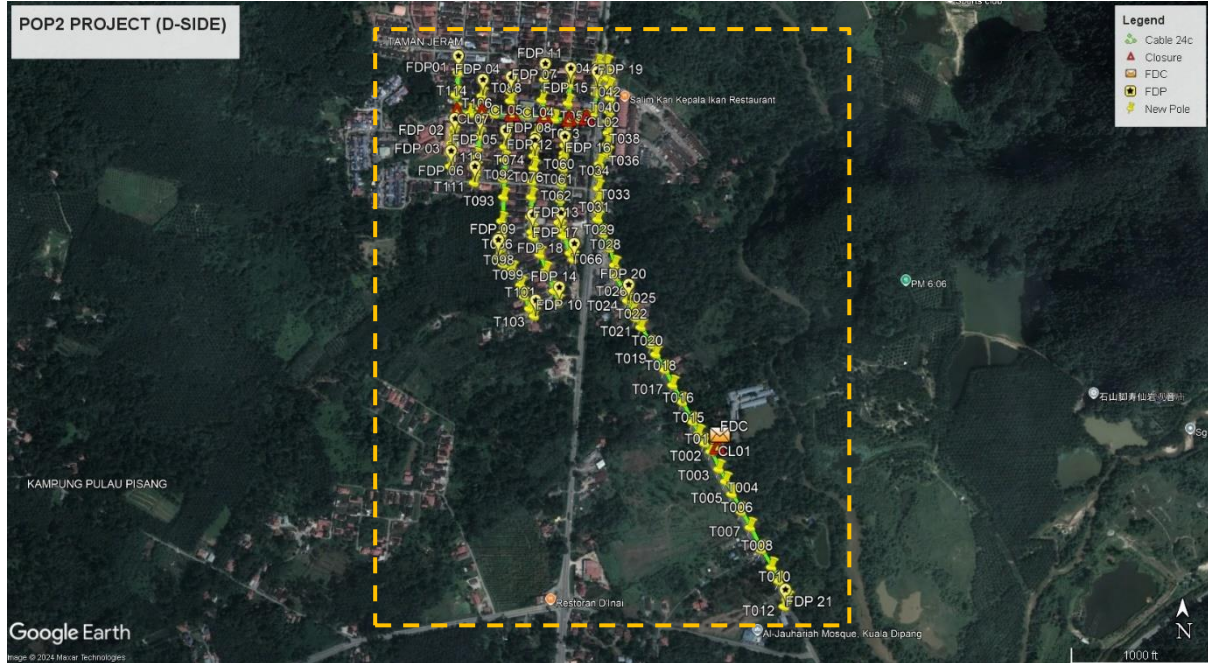


Route 2.1



Route 2.2

Site Plan – KMZ Routing (Proposed new Pole)



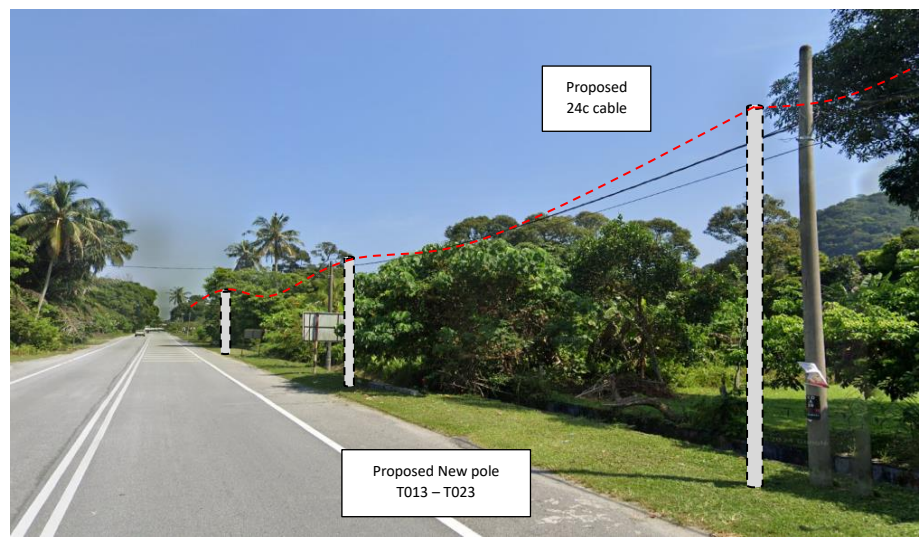
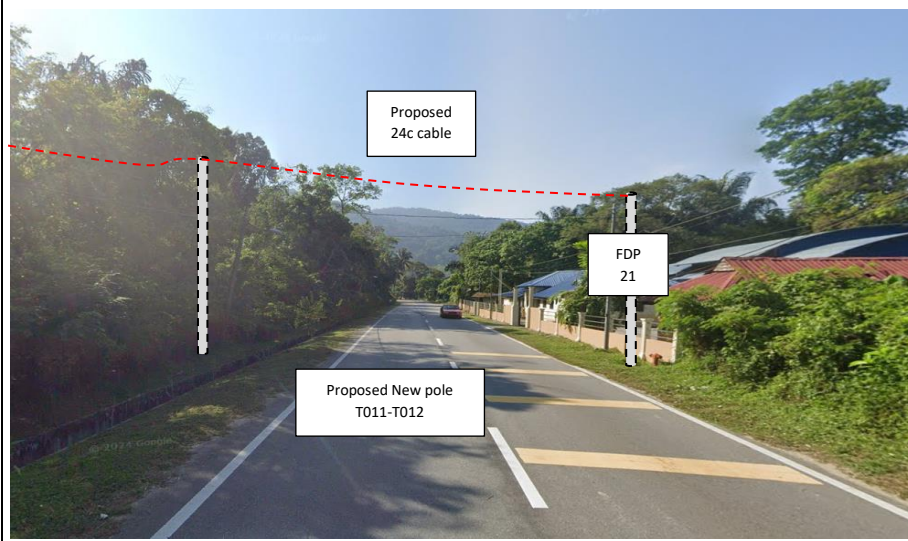
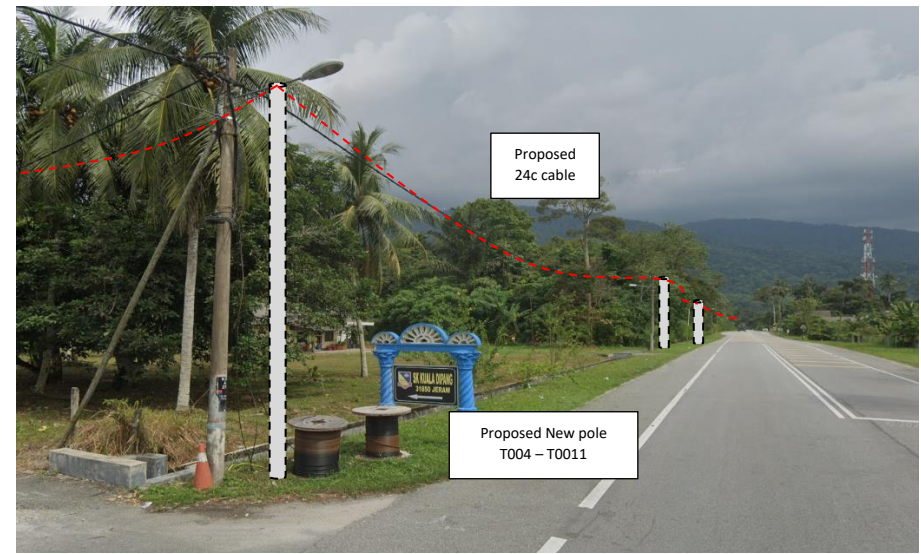
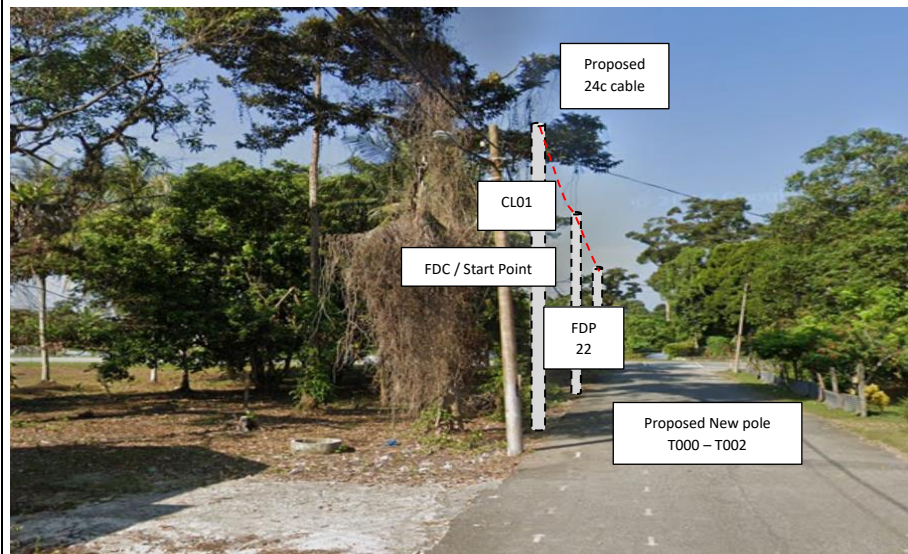
Overall Pole (Proposed New)

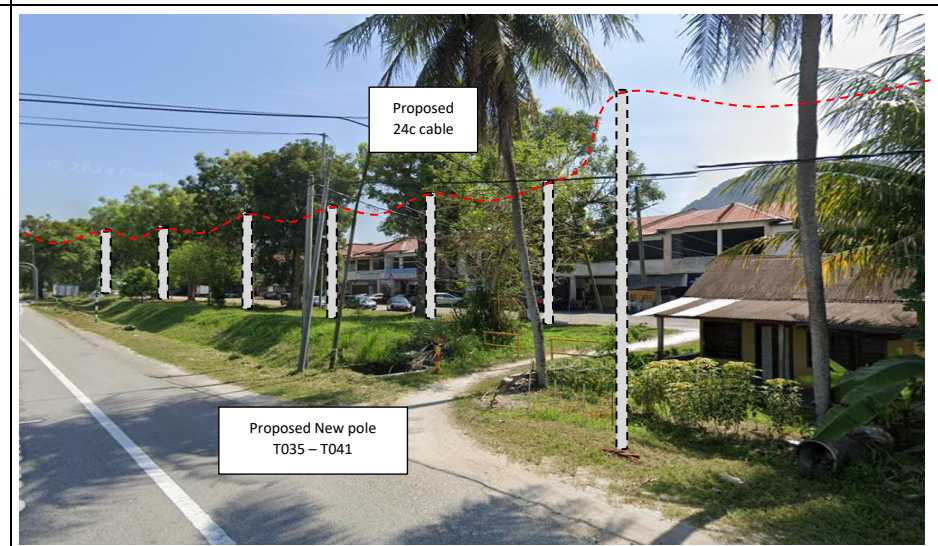
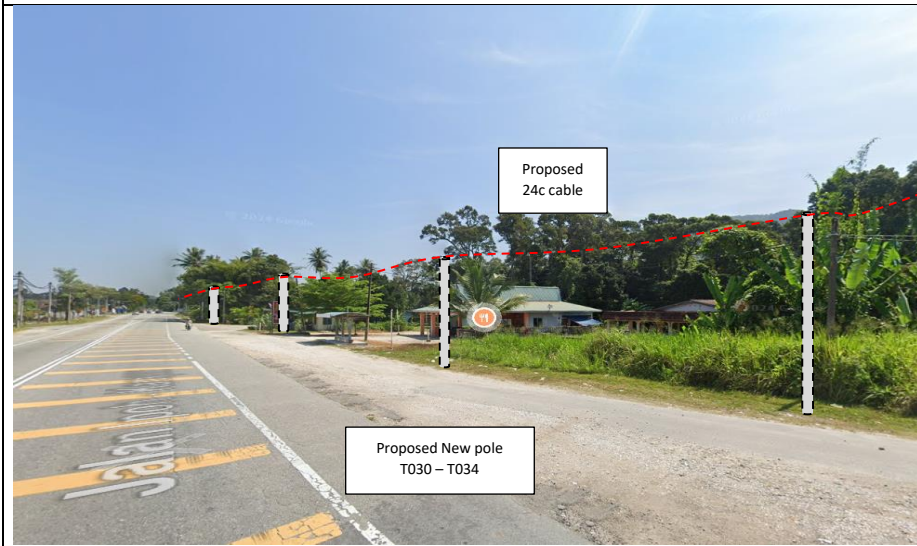
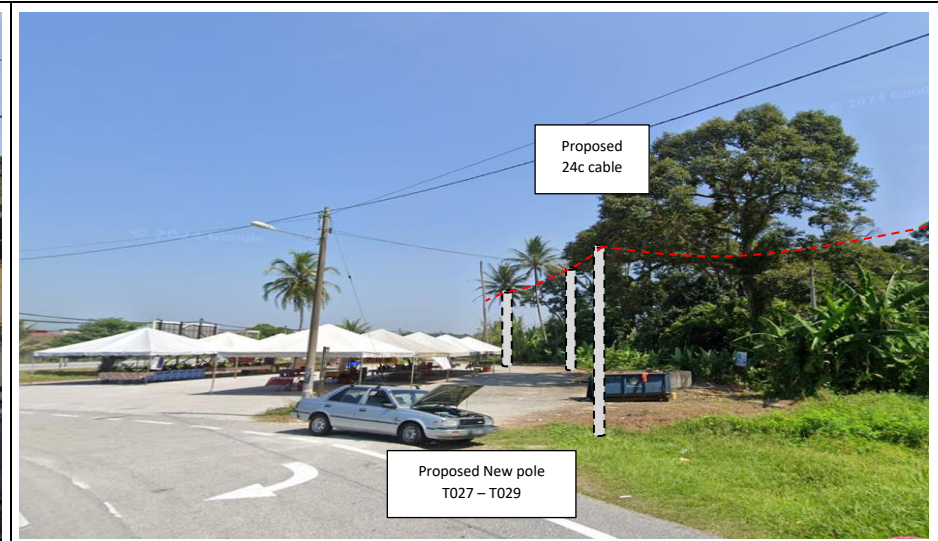
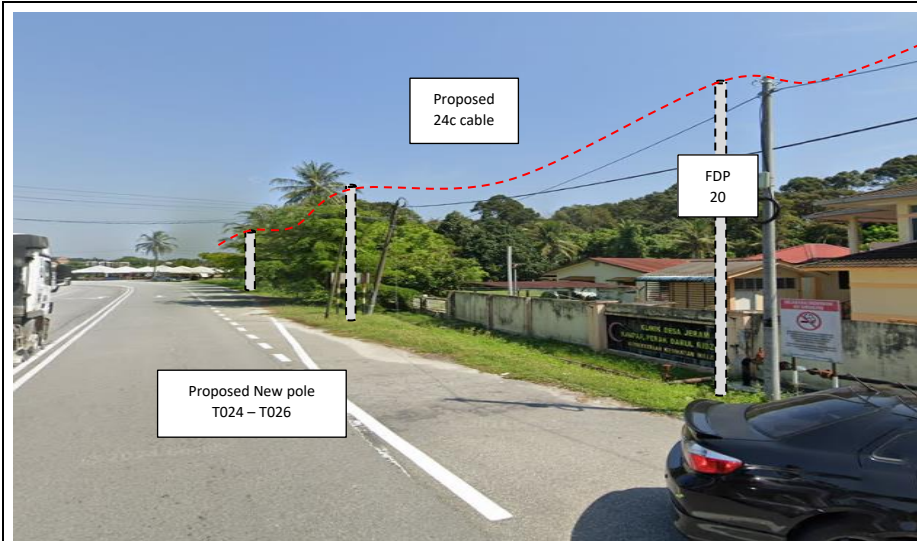
No.	Pole ID	Distance	Latitude	Longitude	Local Authority
1	FDC	0.00	4.380907328	101.1593385	Majlis Perbandaran Kampar
2	T001	4.40	4.380889271	101.1593033	Majlis Perbandaran Kampar
3	T002	17.49	4.380804415	101.1591711	Majlis Perbandaran Kampar
4	T003	44.42	4.380440617	101.159335	Majlis Perbandaran Kampar
5	T004	32.16	4.380187778	101.1594748	Majlis Perbandaran Kampar
6	T005	32.24	4.379928569	101.1596039	Majlis Perbandaran Kampar
7	T006	45.61	4.379563212	101.1597894	Majlis Perbandaran Kampar
8	T007	41.56	4.379240474	101.159977	Majlis Perbandaran Kampar
9	T008	56.64	4.378781969	101.1601975	Majlis Perbandaran Kampar
10	T009	46.29	4.378426254	101.1604128	Majlis Perbandaran Kampar
11	T010	35.12	4.37814467	101.160555	Majlis Perbandaran Kampar
12	T011	46.38	4.377765772	101.1607282	Majlis Perbandaran Kampar
13	T012	16.95	4.377628114	101.1606631	Majlis Perbandaran Kampar
14	T013	414.79	4.380980985	101.1590377	Majlis Perbandaran Kampar
15	T014	24.99	4.381171254	101.1589186	Majlis Perbandaran Kampar
16	T015	31.78	4.381427748	101.1587932	Majlis Perbandaran Kampar
17	T016	52.29	4.381843858	101.1585752	Majlis Perbandaran Kampar
18	T017	44.99	4.382196036	101.1583769	Majlis Perbandaran Kampar
19	T018	40.49	4.382518189	101.158208	Majlis Perbandaran Kampar
20	T019	42.00	4.38284544	101.1580203	Majlis Perbandaran Kampar
21	T020	24.40	4.38304371	101.1579268	Majlis Perbandaran Kampar
22	T021	48.13	4.383417765	101.15771	Majlis Perbandaran Kampar
23	T022	25.15	4.383613554	101.1575973	Majlis Perbandaran Kampar
24	T023	18.02	4.383762157	101.1575332	Majlis Perbandaran Kampar
25	T024	27.50	4.383984814	101.1574261	Majlis Perbandaran Kampar
26	T025	22.74	4.384170988	101.1573421	Majlis Perbandaran Kampar
27	T026	40.55	4.38449349	101.1571728	Majlis Perbandaran Kampar
28	T027	27.96	4.384743727	101.1571511	Majlis Perbandaran Kampar
29	T028	41.06	4.385094206	101.1570362	JKR Kampar
30	T029	38.02	4.385408523	101.1569025	JKR Kampar
31	T030	37.95	4.385731766	101.1567943	JKR Kampar
32	T031	19.82	4.385909774	101.1567995	JKR Kampar
33	T032	22.72	4.386113853	101.156797	JKR Kampar
34	T033	32.27	4.38640374	101.1568006	JKR Kampar
35	T034	33.08	4.386700855	101.1567991	JKR Kampar
36	T035	27.11	4.386942899	101.1568262	JKR Kampar
37	T036	29.08	4.387140249	101.1569974	Majlis Perbandaran Kampar
38	T037	24.26	4.387357933	101.1569868	Majlis Perbandaran Kampar
39	T038	29.20	4.387619138	101.1570111	Majlis Perbandaran Kampar

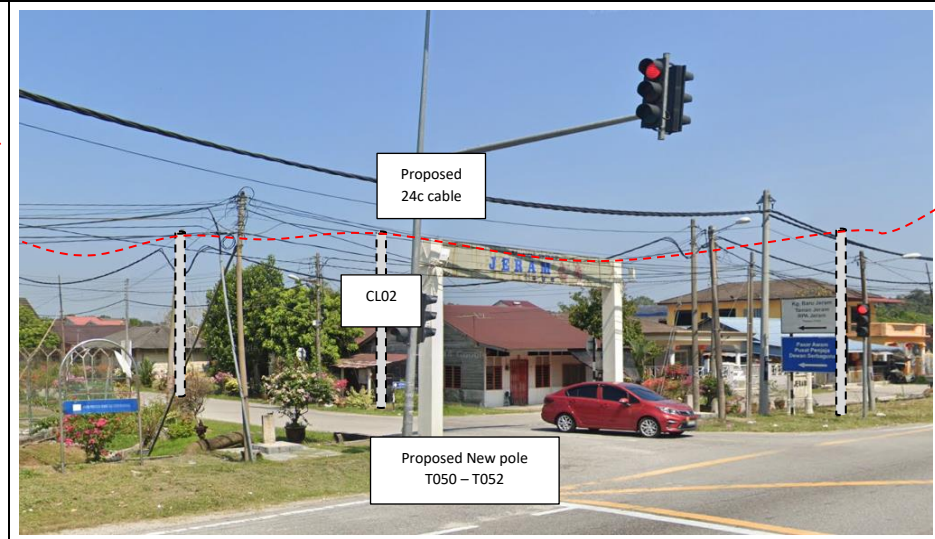
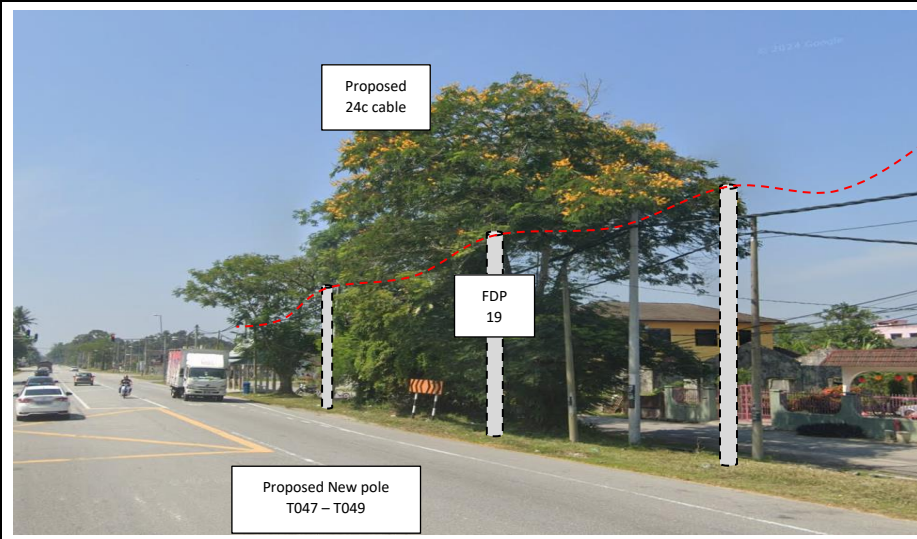
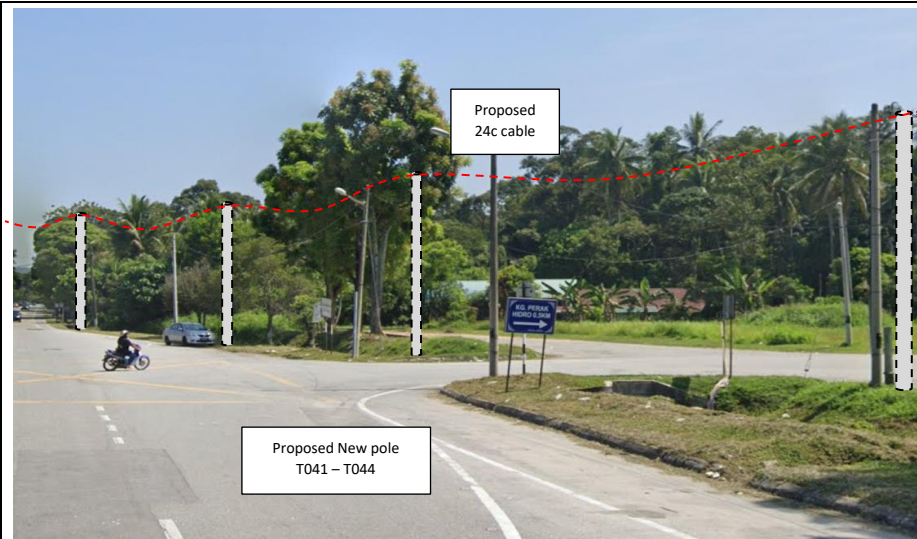
40	T039	27.73	4.387868126	101.1570046	Majlis Perbandaran Kampar
41	T040	25.12	4.388092772	101.1570258	Majlis Perbandaran Kampar
42	T041	32.04	4.388379533	101.1570508	Majlis Perbandaran Kampar
43	T042	28.38	4.388634368	101.1570422	Majlis Perbandaran Kampar
44	T043	22.23	4.388828635	101.1569958	JKR Kampar
45	T044	33.96	4.389133525	101.1569847	JKR Kampar
46	T045	22.31	4.389148713	101.1567849	JKR Kampar
47	T046	14.96	4.389015159	101.1568002	JKR Kampar
48	T047	16.90	4.388863331	101.1568029	JKR Kampar
49	T048	27.45	4.388621191	101.1567561	JKR Kampar
50	T049	15.24	4.388484296	101.1567539	JKR Kampar
51	T050	51.84	4.388022523	101.1566936	JKR Kampar
52	T051	21.01	4.387932077	101.1565279	Majlis Perbandaran Kampar
53	T052	16.10	4.38790066	101.1563867	Majlis Perbandaran Kampar
54	T053	26.08	4.387913187	101.1561528	Majlis Perbandaran Kampar
55	T054	40.40	4.388276078	101.1561466	Majlis Perbandaran Kampar
56	T055	45.45	4.388683658	101.1561699	Majlis Perbandaran Kampar
57	T056	120.22	4.387606445	101.1560931	Majlis Perbandaran Kampar
58	T057	28.51	4.387350732	101.1560781	Majlis Perbandaran Kampar
59	T058	20.35	4.38716822	101.1560673	Majlis Perbandaran Kampar
60	T059	10.57	4.387073375	101.1560634	Majlis Perbandaran Kampar
61	T060	25.52	4.386845129	101.1560424	Majlis Perbandaran Kampar
62	T061	36.74	4.386516117	101.1560161	Majlis Perbandaran Kampar
63	T062	40.36	4.386155309	101.1559808	Majlis Perbandaran Kampar
64	T063	54.18	4.385669034	101.1559601	Majlis Perbandaran Kampar
65	T064	15.01	4.38553685	101.1559869	Majlis Perbandaran Kampar
66	T065	19.50	4.385375031	101.156054	Majlis Perbandaran Kampar
67	T066	44.28	4.385005294	101.1562006	Majlis Perbandaran Kampar
68	T067	16.21	4.384871908	101.156259	Majlis Perbandaran Kampar
69	T068	342.45	4.387921881	101.1558577	Majlis Perbandaran Kampar
70	T069	27.30	4.387965264	101.1556163	Majlis Perbandaran Kampar
71	T070	42.13	4.388341871	101.1555785	Majlis Perbandaran Kampar
72	T071	50.76	4.388794677	101.1556325	Majlis Perbandaran Kampar
73	T072	134.84	4.387595956	101.1554588	Majlis Perbandaran Kampar
74	T073	33.55	4.38729507	101.1554412	Majlis Perbandaran Kampar
75	T074	20.51	4.387113377	101.1554105	Majlis Perbandaran Kampar
76	T075	29.66	4.386846937	101.1554142	Majlis Perbandaran Kampar
77	T076	32.33	4.386559107	101.1553757	Majlis Perbandaran Kampar
78	T077	37.91	4.386218633	101.1553682	Majlis Perbandaran Kampar
79	T078	47.63	4.385791335	101.1553464	Majlis Perbandaran Kampar
80	T079	37.01	4.385460602	101.1553803	Majlis Perbandaran Kampar
81	T080	13.33	4.38534633	101.1554161	Majlis Perbandaran Kampar

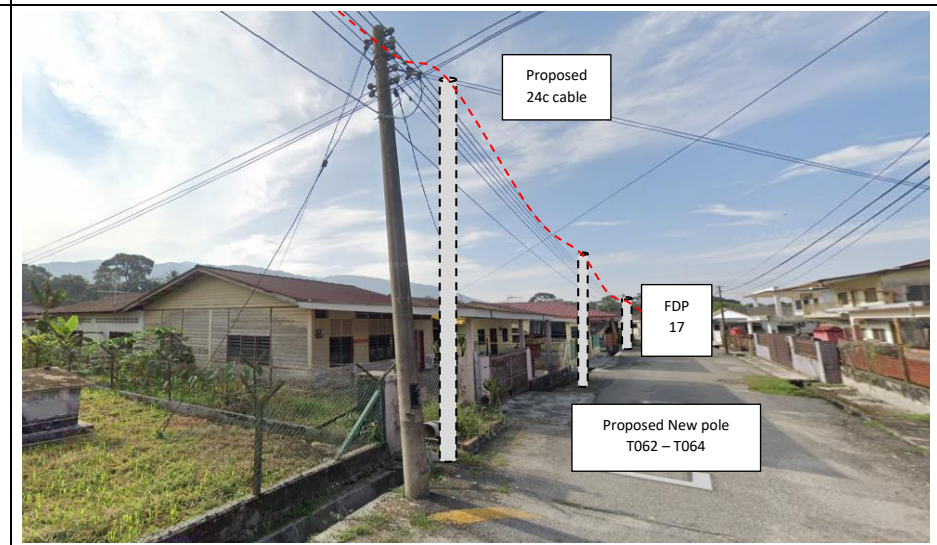
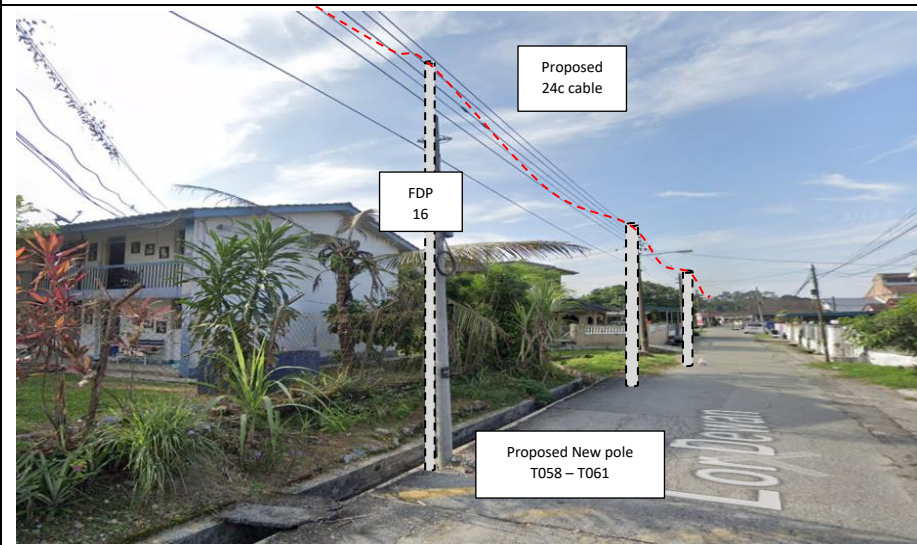
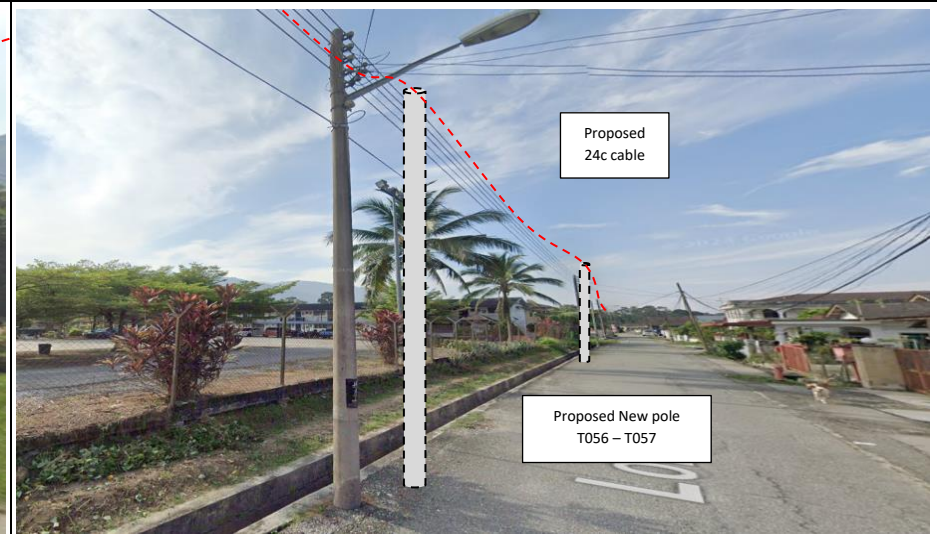
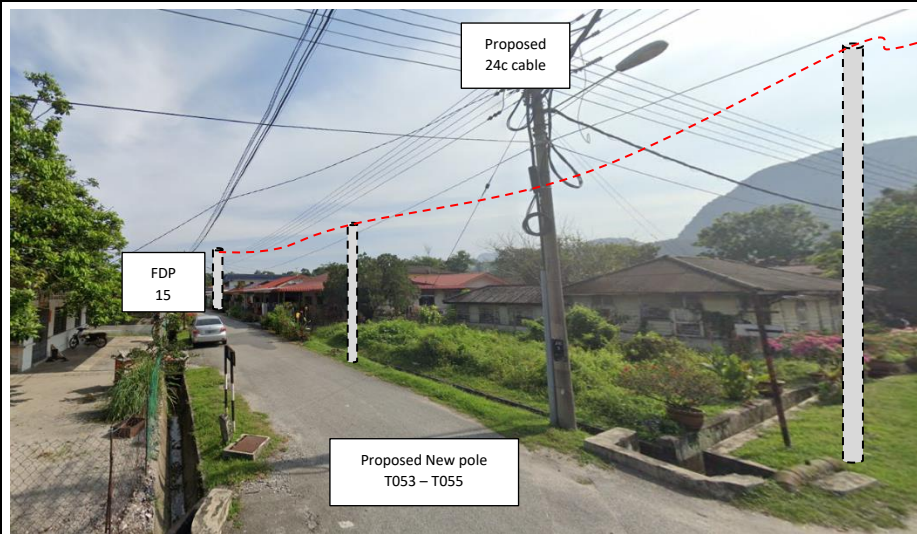
82	T081	45.04	4.384967695	101.1555586	Majlis Perbandaran Kampar
83	T082	40.97	4.384621528	101.1556837	Majlis Perbandaran Kampar
84	T083	51.78	4.38419228	101.1558629	Majlis Perbandaran Kampar
85	T084	29.86	4.383937787	101.1559477	Majlis Perbandaran Kampar
86	T085	458.15	4.3879934	101.1552474	Majlis Perbandaran Kampar
87	T086	35.90	4.388013345	101.1549255	Majlis Perbandaran Kampar
88	T087	34.57	4.388322542	101.1548966	Majlis Perbandaran Kampar
89	T088	21.77	4.38851803	101.1548929	Majlis Perbandaran Kampar
90	T089	100.35	4.387618829	101.1548297	Majlis Perbandaran Kampar
91	T090	34.45	4.387312524	101.1547853	Majlis Perbandaran Kampar
92	T091	31.97	4.387025339	101.1547808	Majlis Perbandaran Kampar
93	T092	46.17	4.386611799	101.1547493	Majlis Perbandaran Kampar
94	T093	43.70	4.386219773	101.1547693	Majlis Perbandaran Kampar
95	T094	58.38	4.385696628	101.154732	Majlis Perbandaran Kampar
96	T095	30.57	4.385422104	101.1547387	Majlis Perbandaran Kampar
97	T096	34.82	4.385109509	101.1547268	Majlis Perbandaran Kampar
98	T097	21.24	4.384931598	101.1546578	Majlis Perbandaran Kampar
99	T098	21.86	4.384766345	101.1547639	Majlis Perbandaran Kampar
100	T099	25.87	4.384644404	101.1549617	Majlis Perbandaran Kampar
101	T100	42.16	4.384317775	101.1551534	Majlis Perbandaran Kampar
102	T101	28.92	4.384069986	101.1552316	Majlis Perbandaran Kampar
103	T102	31.20	4.383813454	101.1553446	Majlis Perbandaran Kampar
104	T103	20.29	4.383660045	101.155443	Majlis Perbandaran Kampar
105	T104	496.19	4.388028693	101.1545582	Majlis Perbandaran Kampar
106	T105	31.14	4.388044989	101.1542789	Majlis Perbandaran Kampar
107	T106	15.06	4.388178245	101.1542557	Majlis Perbandaran Kampar
108	T107	28.62	4.388434215	101.1542801	Majlis Perbandaran Kampar
109	T108	97.99	4.387555644	101.1542259	Majlis Perbandaran Kampar
110	T109	52.84	4.387083607	101.1541762	Majlis Perbandaran Kampar
111	T110	29.94	4.386814677	101.1541711	Majlis Perbandaran Kampar
112	T111	31.73	4.386532521	101.1541308	Majlis Perbandaran Kampar
113	T112	169.38	4.388050585	101.1540279	Majlis Perbandaran Kampar
114	T113	34.39	4.388087533	101.1537212	Majlis Perbandaran Kampar
115	T114	41.20	4.388457504	101.1537123	Majlis Perbandaran Kampar
116	T115	55.12	4.388950569	101.1537573	Majlis Perbandaran Kampar
117	T116	136.32	4.387727236	101.1537019	Majlis Perbandaran Kampar
118	T117	15.69	4.387588075	101.1536795	Majlis Perbandaran Kampar
119	T118	21.79	4.387396582	101.1536391	Majlis Perbandaran Kampar
120	T119	25.24	4.38717267	101.1536037	Majlis Perbandaran Kampar
121	T120	31.73	4.38688774	101.1536096	Majlis Perbandaran Kampar

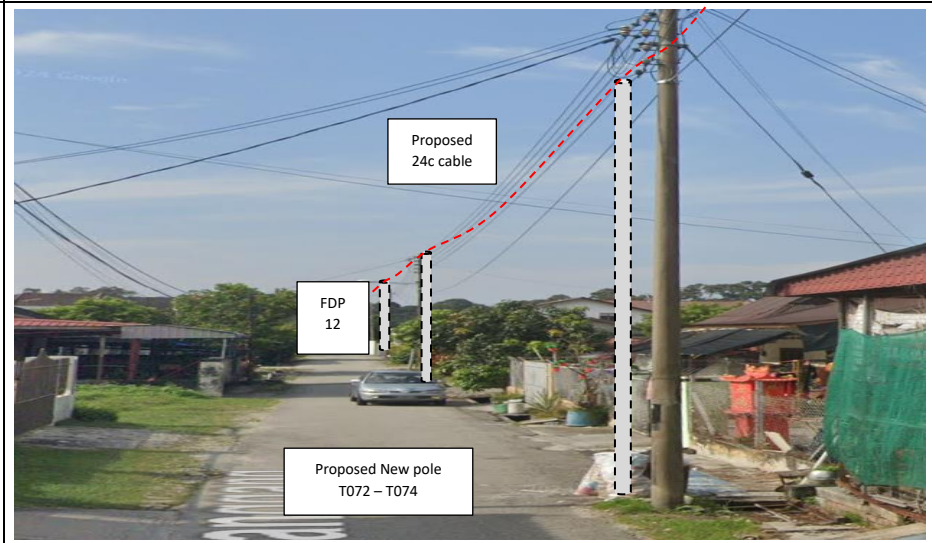
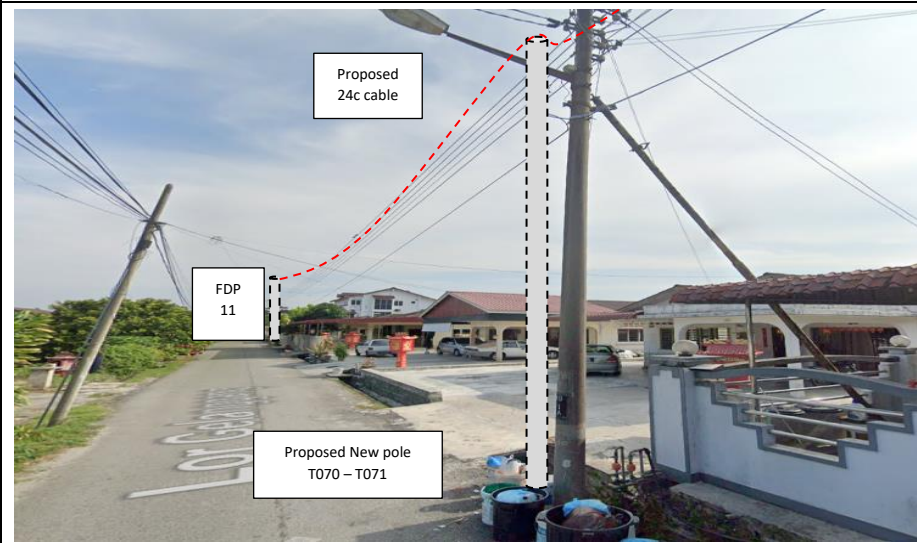
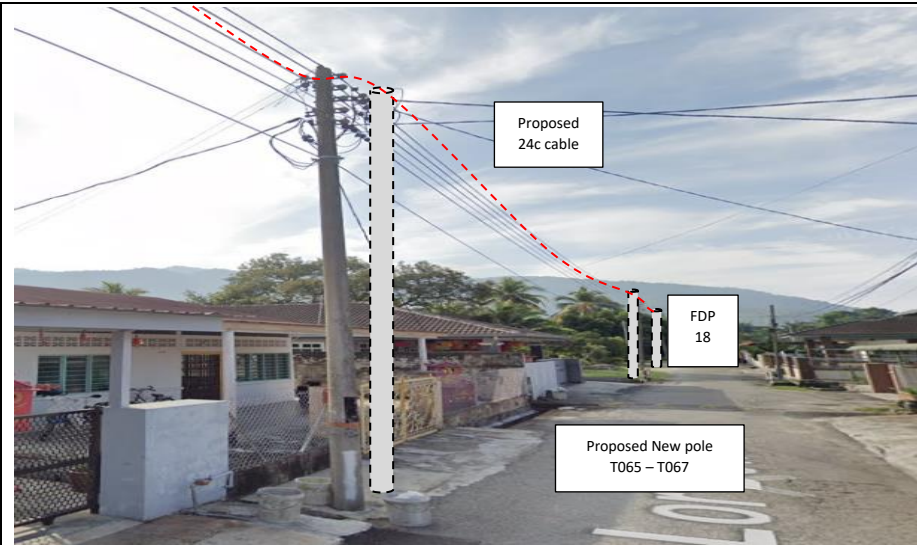
Site Photos – Proposed to install pole

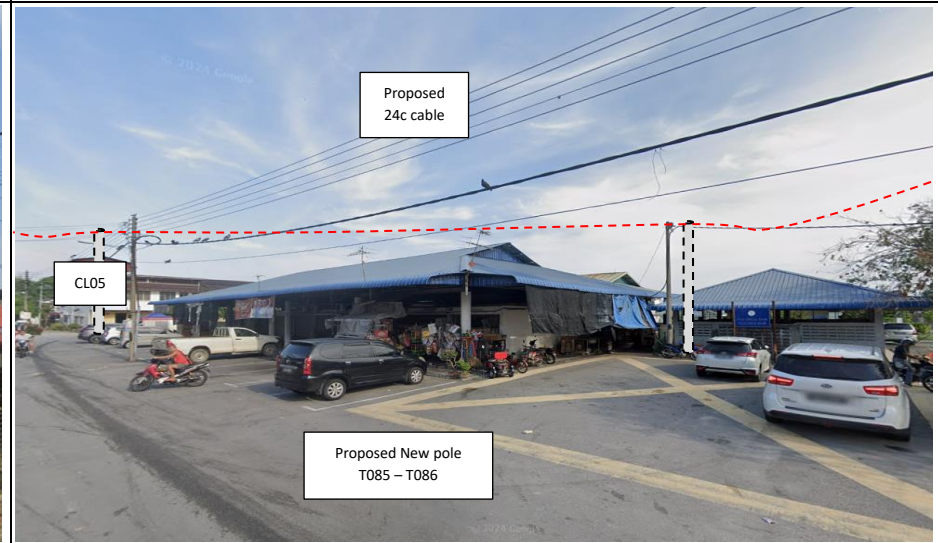
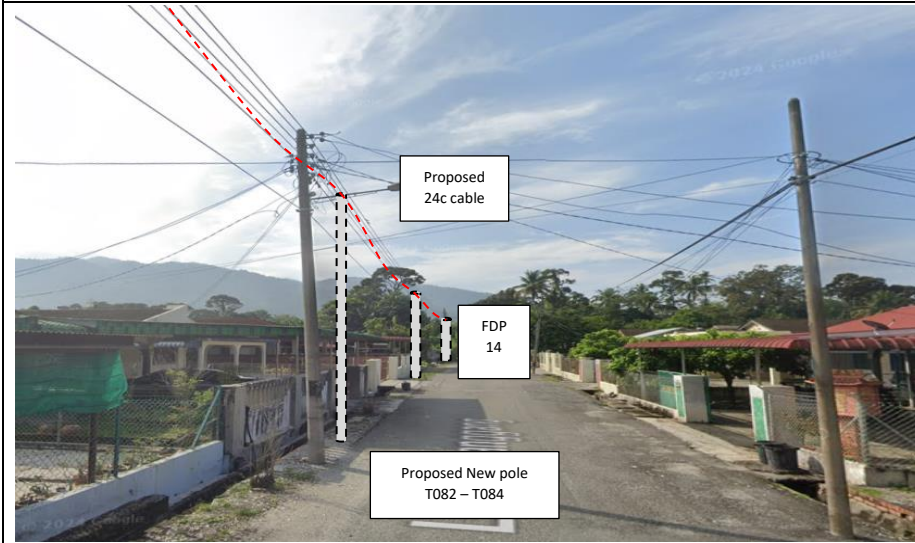
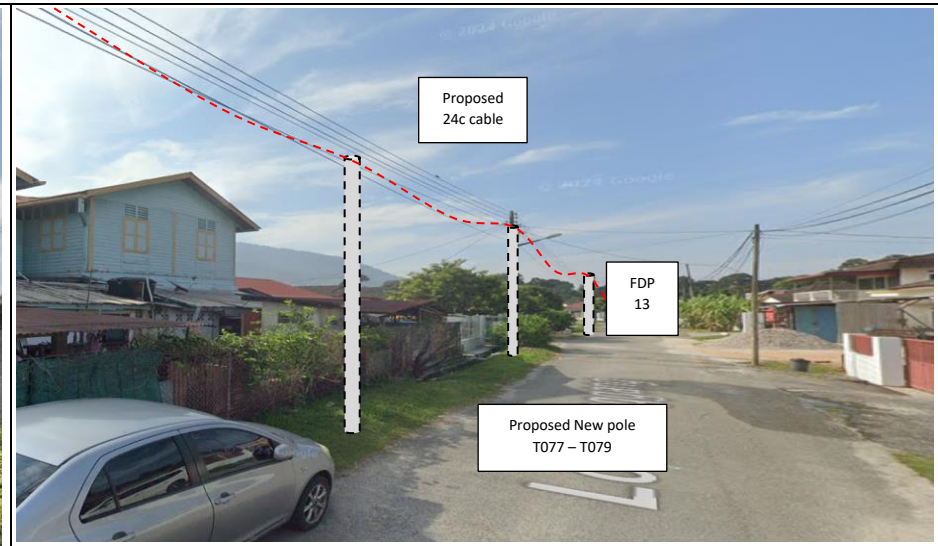
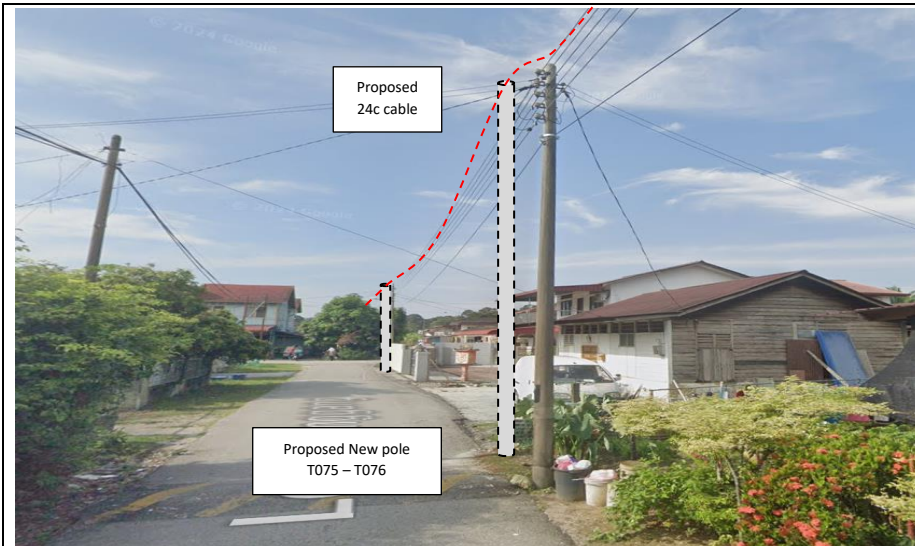


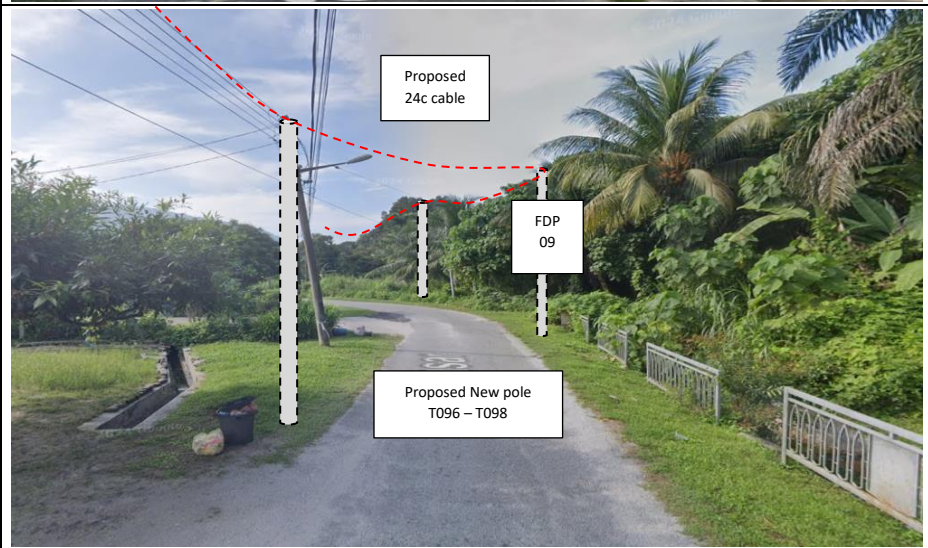
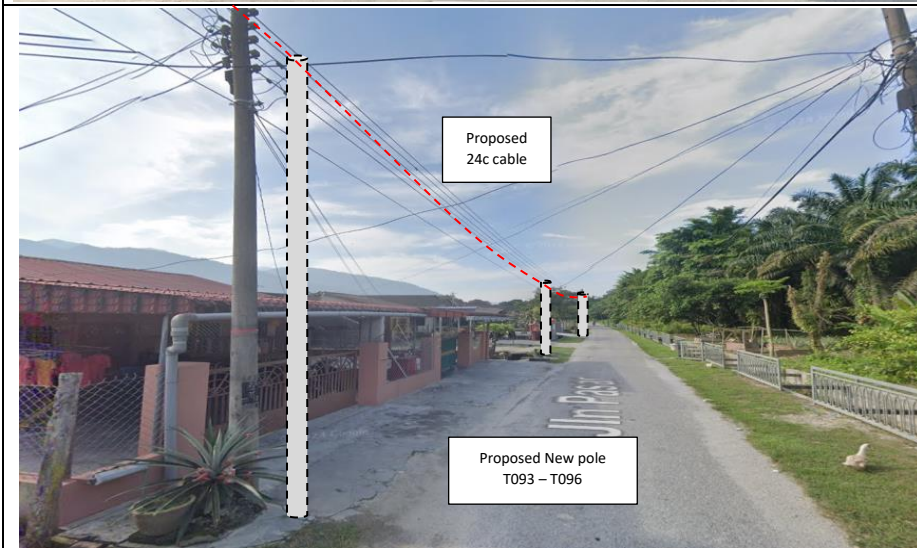
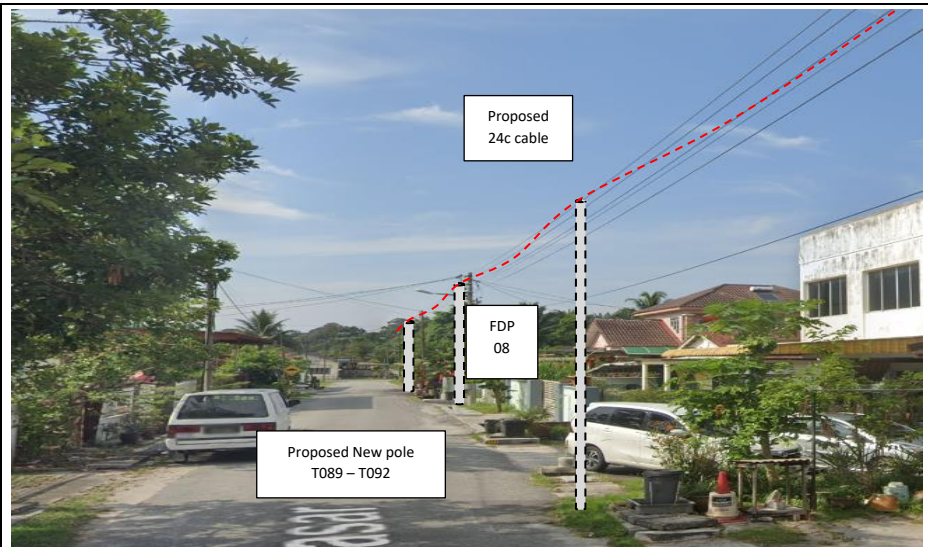
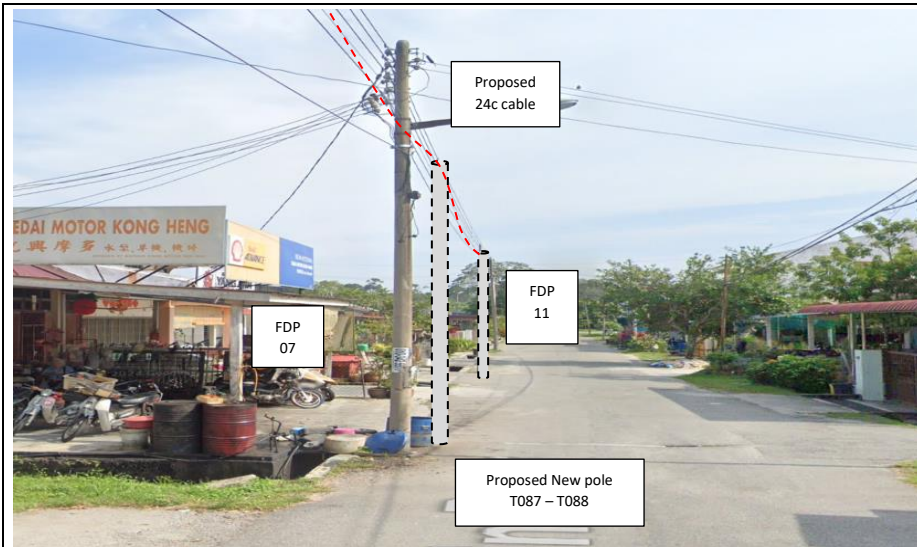


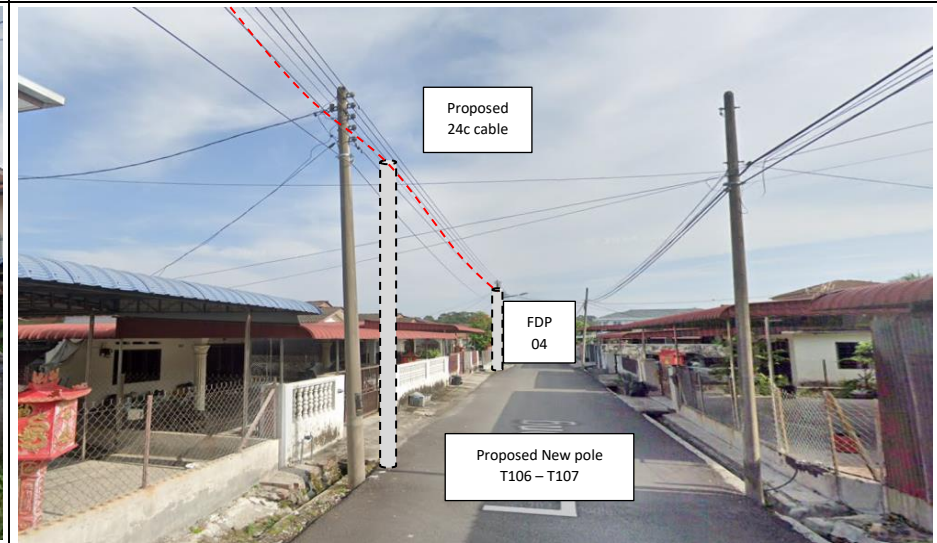
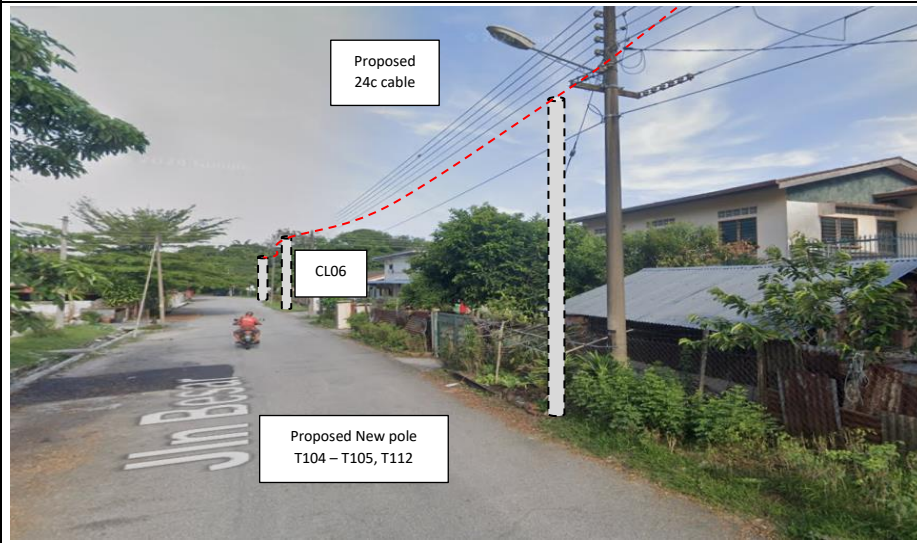
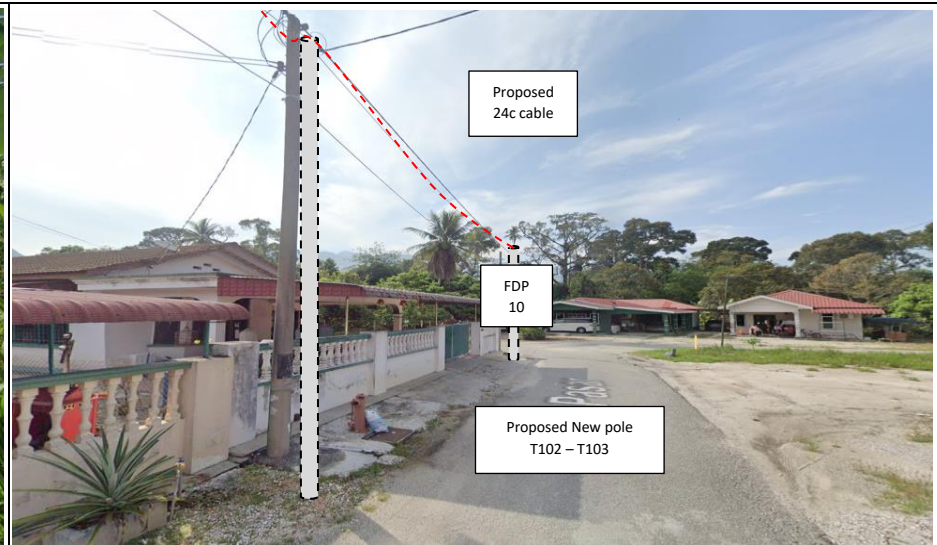
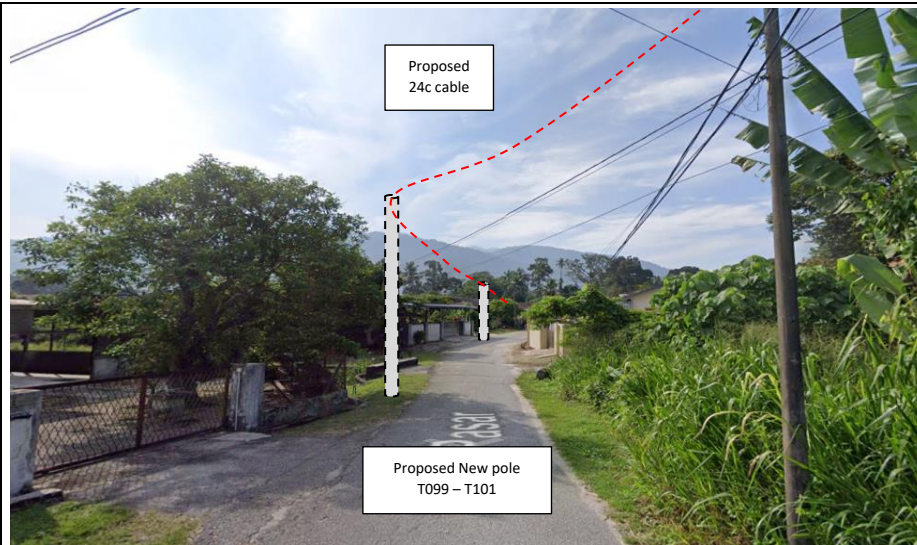


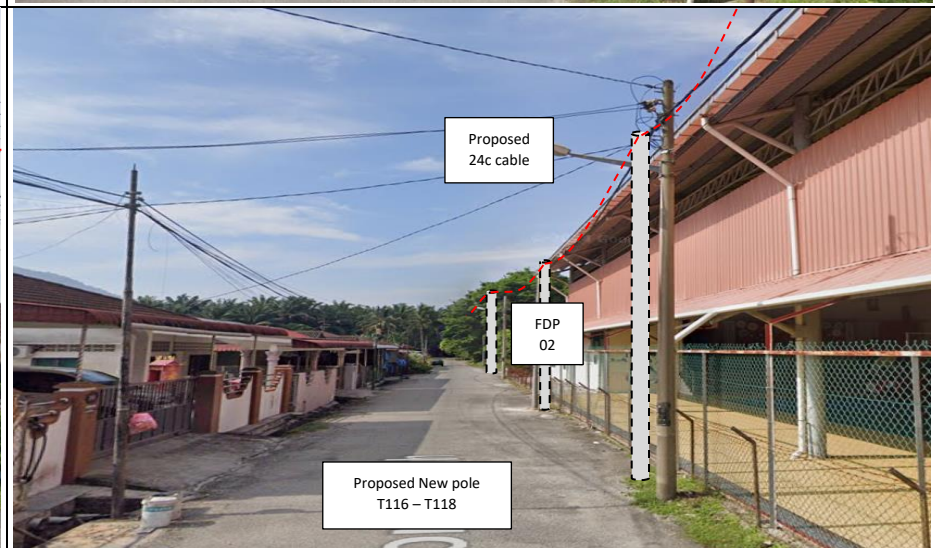
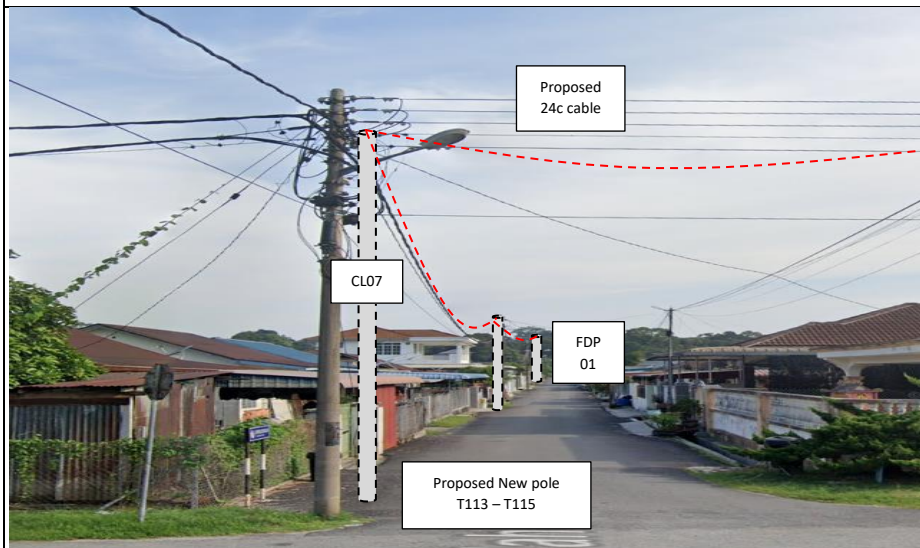
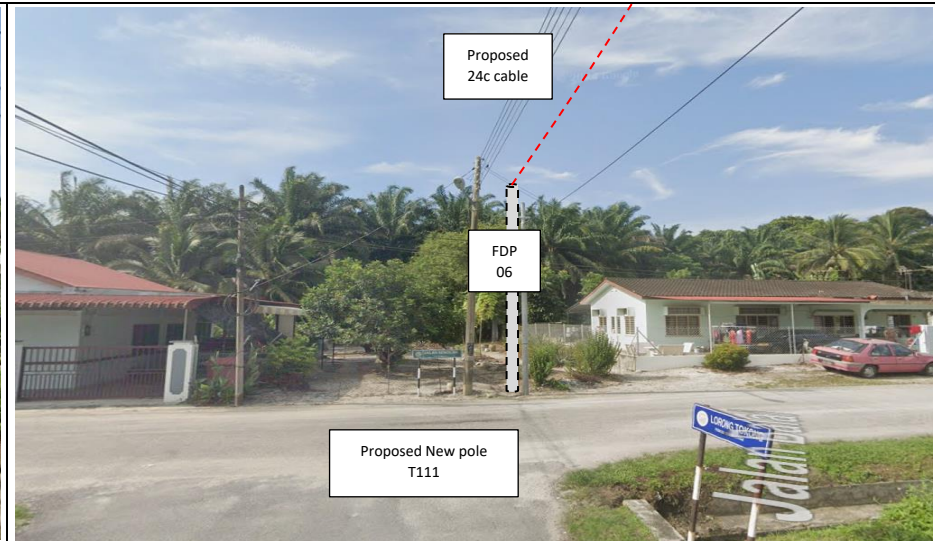
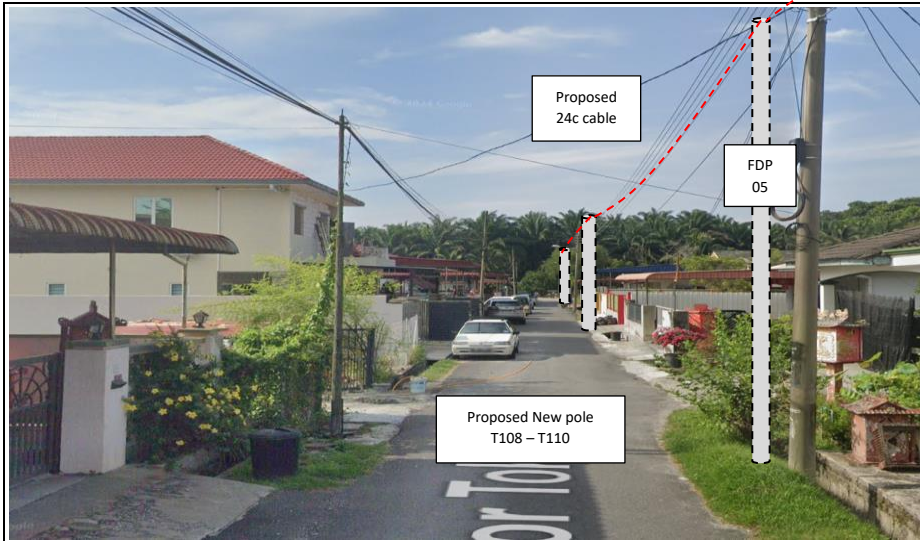


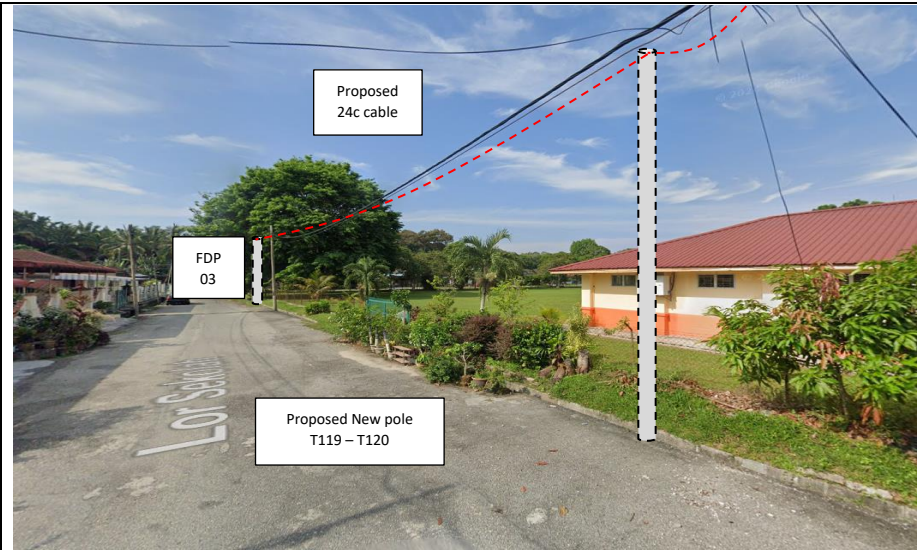












N/A

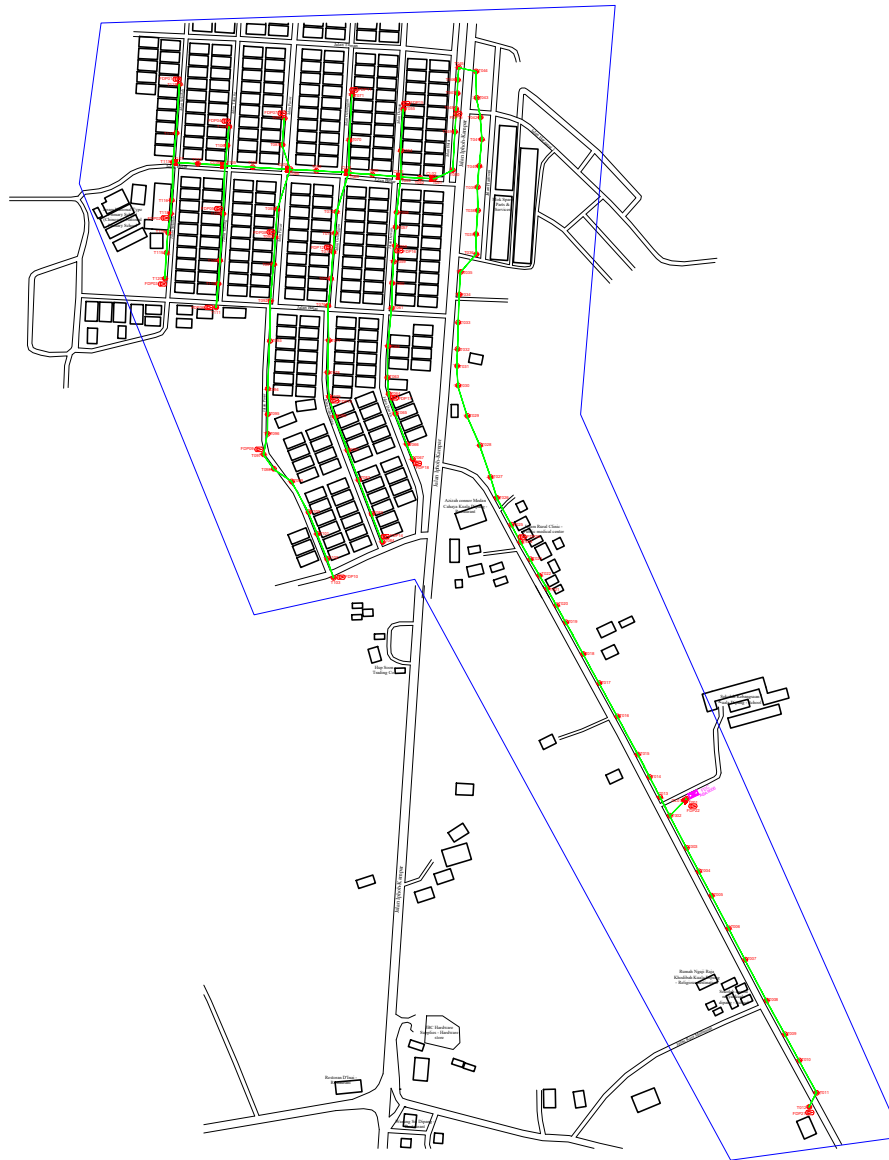


SUPPLY, INSTALLATION AND COMMISSIONING OF FTTX NETWORK INFRASTRUCTURE FOR WCWL COMMUNICATIONS SDN BHD POP2 PROJECT (D-SIDE) – PMU KMPR FOR ABA9006 SEKOLAH KEBANGSAAN KUALA DIPANG





3rd Parties Dependencies

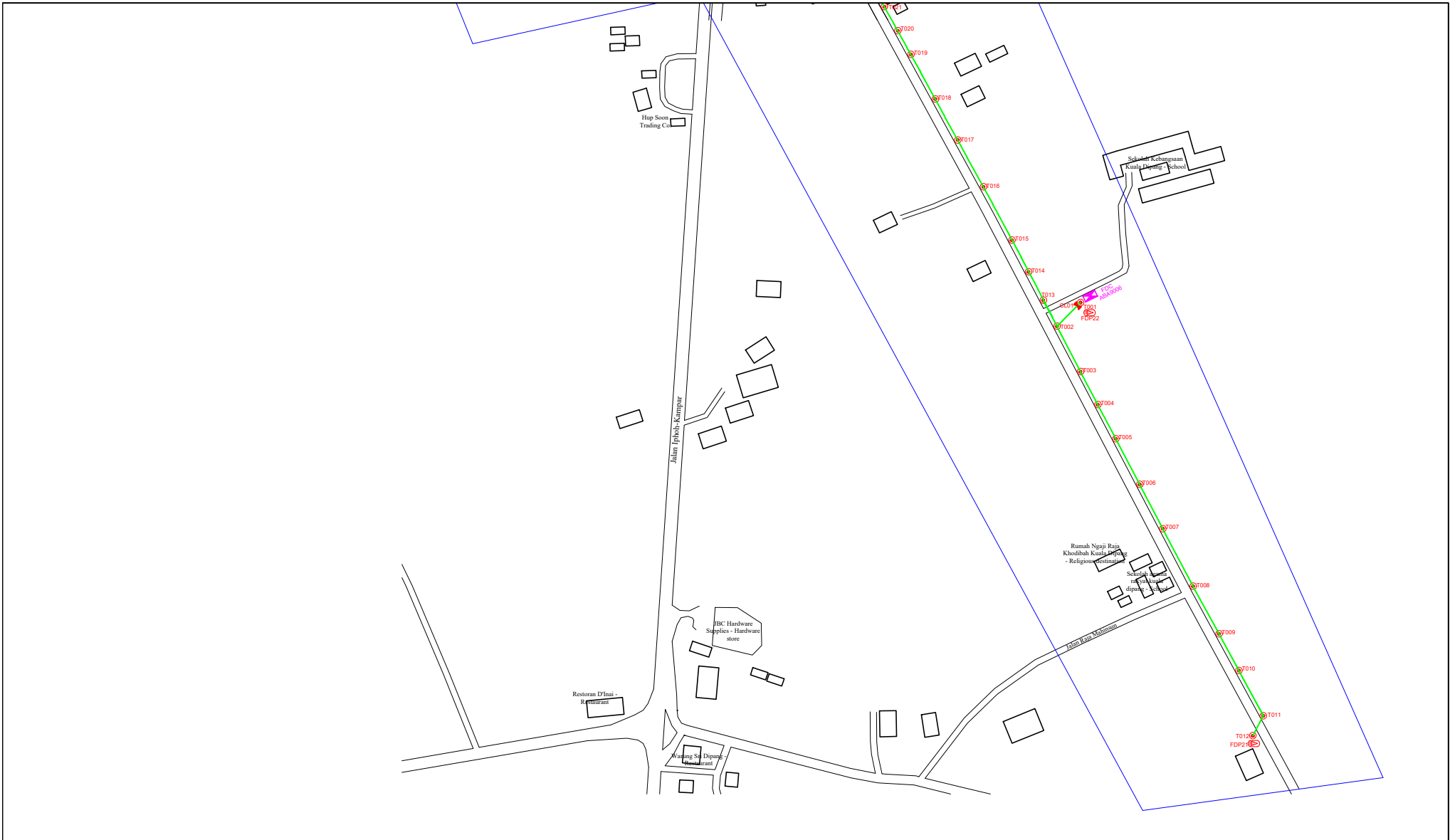
No.	Local Council/ Authority	Remark
1	JKR Kampar	
2	Majlis Perbandaran Kampar	
3	Ladang/Private Estate	
4		
5		
6		



LEGEND	NOS.		NOS.		NOS.		NOS.		NOS.		NOS.		
12C FOC		Installed 1:4 / 1:8 / 1:32 splitter		Installed Pole (9m)		Suspension		New Manhole (PIT)		Micro-Trenching (Meter)		MH1	MH NO.
24C FOC	3914	Installed Patch Cord		Installed Pole (7.5M)	120	Tension		New Manhole(JRC7)		Temporary Infra (Meter)		TKS-1	Existing TNB Pole NO.
48C FOC		FDC	1	Installed Pole (6.7M)		Pole Ring		FDP Boundary		Loop / Coil (Meter)		PO01	New Pole NO.
96C FOC		Closure	7	Existing TNB Pole		FDP with (1:8) splitter	22	HDD (Meter)		Active Outdoor Cabinet		CL01	Closure NO.
144C FOC		Existing Closure		Installed Riser		Existing Manhole		Open Cut (Meter)		FDC NO.		DP1	FDP NO.

ACTUAL HOMEPASS :

KEY PLAN : POP2 PROJECT IN PERAK	OWNER/DEVELOPOR :  APEX COMMUNICATIONS SDN BHD 12th FLOOR, MENARA IHP SENG, 55200 JALAN PJ, PINKLEE, KUALA LUMPUR	MAIN CONTRACTOR :  WCWL COMMUNICATIONS SDN BHD 127, JALAN PUSU 1/2, TAMAN PUSUK JAYA, BANDAR PUTRA PERAI, 03000 SERI KEMBANGAN, SELANGOR TEL: 403 5088 0983 E-MAIL: info@wcwlcommunications.com.my	PROJECT TITLE : CONTRACTOR FOR SURVEY, TECHNICAL PROPOSAL AND WAYLEAVE, & PERMIT APPROVAL - POP2 PROJECT	DRAWING TITLE: AS-BUILT SITE PLAN DRAWING ABA9002 SEKOLAH KEBANGSAAN KUALA DIPANG	Design By : ENGINEER	Date : NOV 2024
					Drawn By : CAD ENGINEER	Scale : NOT TO SCALE
				PROJECT PHASE: POP 2	Checked By : ENGINEER	Job Number : 1
					DRAWING NUMBER : ABA9006-ABD-01	Sheet : 1/3
					THIS PRINT AND ITS COPYRIGHT ARE THE PROPERTY OF APEX COMMUNICATIONS SDN BHD	
					Size : A3	



LEGEND		NOS.	NOS.	NOS.	NOS.	NOS.	NOS.	NOS.	NOS.	NOS.	NOS.
12C FOC	Installed 1:4 / 1:8 / 1:32 splitter		Installed Pole (9m)	Suspension	1830	New Manhole (PIT)	Micro-Trenching (Meter)	MH1	MH NO.		
24C FOC	Installed Patch Cord	3914	Installed Pole (7.5M)	Tension	120	New Manhole(JRC7)	Temporary Infra (Meter)	TKS-1	Existing TNB Pole NO.		
48C FOC	FDC	1	Installed Pole (6.7M)	Pole Ring		FDP Boundary	Loop / Coil (Meter)	P001	New Pole NO.		
96C FOC	Closure	7	Existing TNB Pole	FDP with (1:8) splitter	22	HDD (Meter)	Active Outdoor Cabinet	CL01	Closure NO.		
144C FOC	Existing Closure		Installed Risers	Existing Manhole		Open Cut (Meter)	FDC NO.	DP1	FDP NO.		

ACTUAL HOMEPASS :

KEY PLAN : POP2 PROJECT IN PERAK	OWNER/DEVELOPOR : APEX COMMUNICATIONS SDN BHD 12th FLOOR, MENARA HAP SENG, 50200 JALAN P. PINKLE, KUALA LUMPUR	MAIN CONTRACTOR : WCWL COMMUNICATIONS SDN BHD 127, JALAN PUTI 3/2, TAMAN PERKOTA JAYA, BANDAR PUTRA PERAI, 14000 BERTAMBUK, SELANGOR TEL: +603 5089 0983 E-MAIL: info@wcwlcommunications.com.my	PROJECT TITLE : CONTRACTOR FOR SURVEY, TECHNICAL PROPOSAL AND WAYLEAVE, & PERMIT APPROVAL - POP2 PROJECT	DRAWING TITLE: AS-BUILT SITE PLAN DRAWING ABA9006 SEKOLAH KEBANGSAAN KUALA DIPANG	Design By : ENGINEER Date : NOV 2024
					Drawn By : CAD ENGINEER Scale : NOT TO SCALE
PROJECT PHASE: POP 2					Checked By : ENGINEER Job Number : 1
DRAWING NUMBER : ABA9006-ABD-01A					Sheet : 2/3
THIS PRINT AND ITS COPYRIGHT ARE THE PROPERTY OF APEX COMMUNICATIONS SDN BHD					Size : A3



LEGEND	NOS.	NOS.	NOS.	NOS.	NOS.	NOS.	NOS.	NOS.	NOS.	
12C FOC	3914	Installed 1:4 / 1:8 / 1:32 splitter	Installed Pole (9m)	S	Suspension	B330	New Manhole (PIT)	Micro-Trenching (Meter)	MH1	MH NO.
24C FOC	3914	Installed Patch Cord	Installed Pole (7.5M)	T	Tension	C7	New Manhole(JRC7)	Temporary Infra (Meter)	TKS-1	Existing TNB Pole NO.
48C FOC		FDC	Installed Pole (6.7M)	Pole Ring			FDP Boundary	Loop / Coil (Meter)	P001	New Pole NO.
96C FOC		Closure	Existing TNB Pole	FDP with (1:8) splitter	22		HDD (Meter)	#	CL01	Closure NO.
144C FOC		Existing Closure	Installed Riser	Existing Manhole			Open Cut (Meter)	C01	DP1	FDP NO.

ACTUAL HOMEPASS :

KEY PLAN : POP2 PROJECT IN PERAK	OWNER/DEVELOPER : APEX COMMUNICATIONS SDN BHD 12th FLOOR, MENARA IMP SENG, 50250 JALAN P. RAMLEE, KUALA LUMPUR	MAIN CONTRACTOR : WCWL COMMUNICATIONS SDN BHD 127, JALAN PUTU 1/2, TAMAN PANDAN JAYA, BANDAR PUTRA PERAI, 04300 SIBU SELAYANG, SELANGOR TEL: 403 5088 0983 E-MAIL: info@wcwlcommunications.com.my	PROJECT TITLE : CONTRACTOR FOR SURVEY, TECHNICAL PROPOSAL AND WAYLEAVE, & PERMIT APPROVAL - POP2 PROJECT	DRAWING TITLE: AS-BUILT SITE PLAN DRAWING ABC9006 SEKOLAH KEBANGSAAN KUALA DIPANG	Design By : ENGINEER	Date : NOV 2024
					Drawn By : CAD ENGINEER	Scale : NOT TO SCALE
PROJECT PHASE: POP 2		Checked By : ENGINEER		Job Number : 1		
DRAWING NUMBER : ABC9006-ABD-01B				Sheet : 3/3		
THIS PRINT AND ITS COPYRIGHT ARE THE PROPERTY OF APEX COMMUNICATIONS SDN BHD						
Size : A3						