

TECHNICAL PROPOSAL

POP2 ABA7004 SEKOLAH KEBANGSAAN BEKUIAI (D-SIDE)

Company Name : WabTech Sdn Bhd
Company Address : 101-1, Jalan Metro Sendayan, 71950 Seremban, Negeri Sembilan.
Prepared By : Sharifful Bahrin bin Che Meh
Date : 14/2/2025



Starting Point

Site / Boundary Name : Sekolah Kebangsaan Bekuai
Address : Jalan Tasek, 33100 Pengkalan Hulu, Perak
District : Pengkalan Hulu
Postcode : 33100
State : Perak
GPS Coordinate : 5.687090, 100.988152
LRD : A

End Point

Site / Boundary Name : Kampung Selarong
Address : Jalan Tasek, 33100 Pengkalan Hulu, Perak
District : Pengkalan Hulu
Postcode : 33100
State : Perak
GPS Coordinate : 5.676306, 100.976034
LRD : B



PROJEK PENYEDIAAN DAN PENYELENGGARAAN POINT OF PRESENCE (POP)
FASA 2: HAB INFRASTRUTUK GENTIAN OPTIK BERHAMPIRAN DENGAN
SEKOLAH, KAWASAN PERINDUSTRIAN, PREMIS KERAJAAN DAN KOMUNITI
SEKITARNYA OLEH KEMENTERIAN KOMUNIKASI MALAYSIA – ZON UTARA
(KKMM.400-11/17/132(1))



WRBTECH SDN BHD
ESTABLISHED 2014

1.0 WORK SUMMARY

NO	PROPOSED DISTANCE AND METHOD	UNIT	QUANTITY
1	Horizontal Directional Drilling (HDD)	m	23
2	Carriage Way Open Trench (CW)	m	0
3	Grass Verge Open Trenching (GV)	m	0
4	Micro Trenching (MT)	m	0
Total			

NO	OTHER INFORMATION	UNIT	QUANTITY
1	Installation of Short Span ADSS Fibre Cables	m	4262
2	Install New Pole	ea	100
3	Install New JRC7 Manhole	ea	2
4	Install GI Riser 100mm	ea	2
5	Install Fiber Distribution Point and Closure (Splicing, Termination and Testing)	ea	17
6	Estimated Time Required for Completion	days	30



PROJEK PENYEDIAAN DAN PENYELENGGARAAN POINT OF PRESENCE (POP)
FASA 2: HAB INFRASTRUTUK GENTIAN OPTIK BERHAMPIRAN DENGAN
SEKOLAH, KAWASAN PERINDUSTRIAN, PREMIS KERAJAAN DAN KOMUNITI
SEKITARNYA OLEH KEMENTERIAN KOMUNIKASI MALAYSIA – ZON UTARA
(KKMM.400-11/17/132(1))



WABTECH SDN BHD
ESTABLISHED 2014

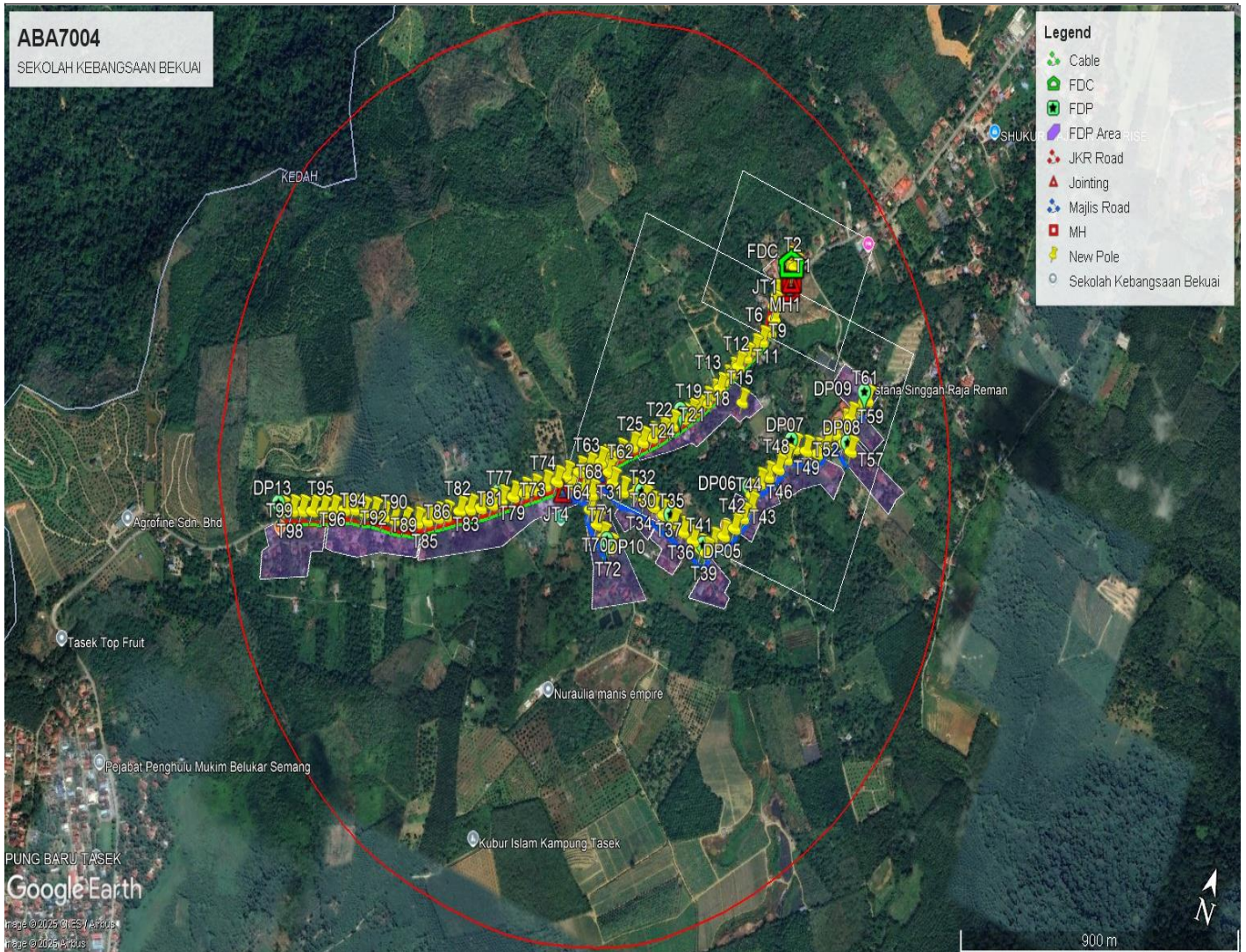
2.0 LOCAL AUTHORITY SUMMARY

Daerah Pengkalan Hulu

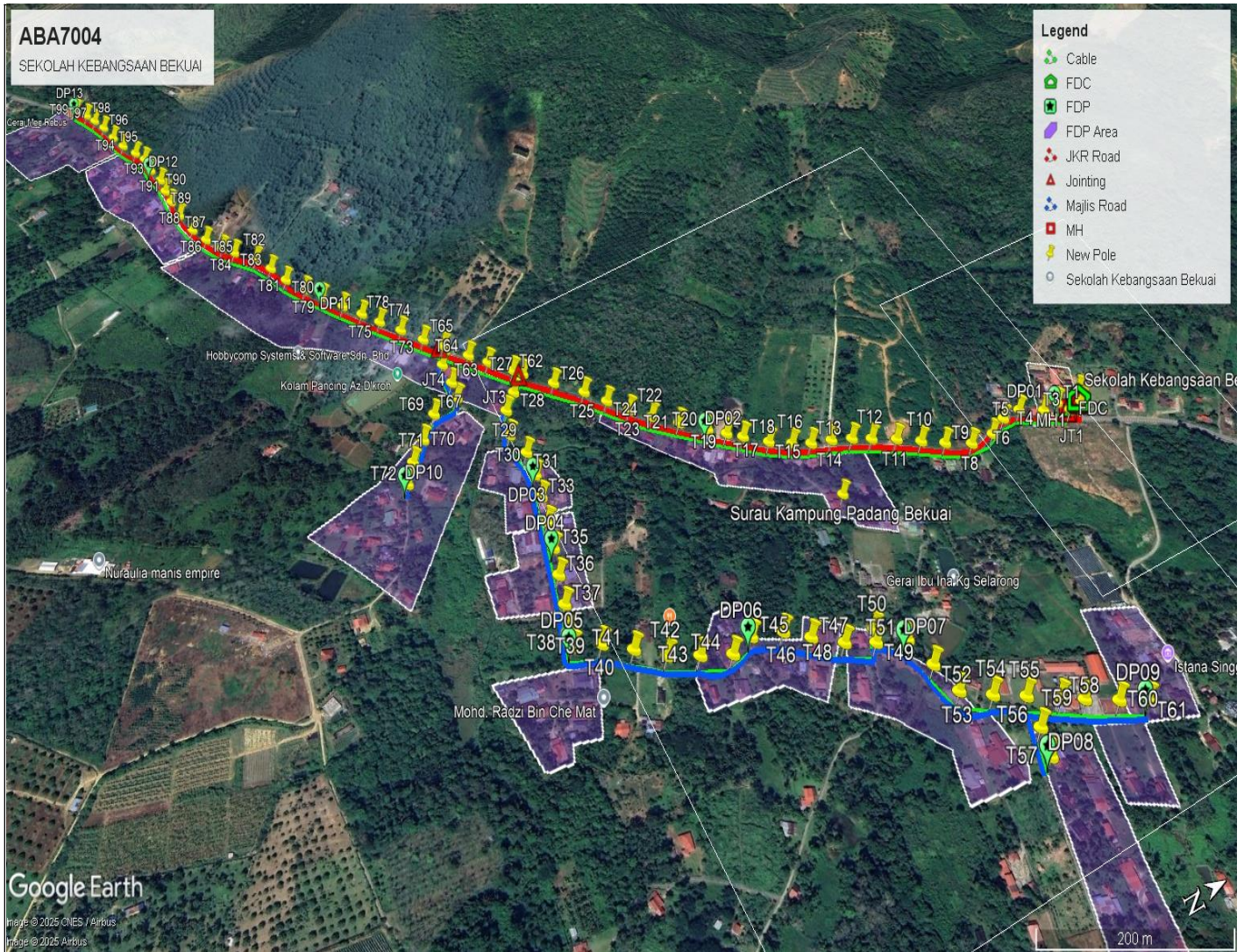
NO	ITEMS	Owner	Quantity	Distance (m)
1	HDD	JKR	1	23
		Majlis	-	-
		PDT	-	-
2	New Pole	JKR	59	1953
		Majlis	41	1520
		PDT	-	-
Total Distance (m)				3496

3.0 SITE PLAN (KMZ)

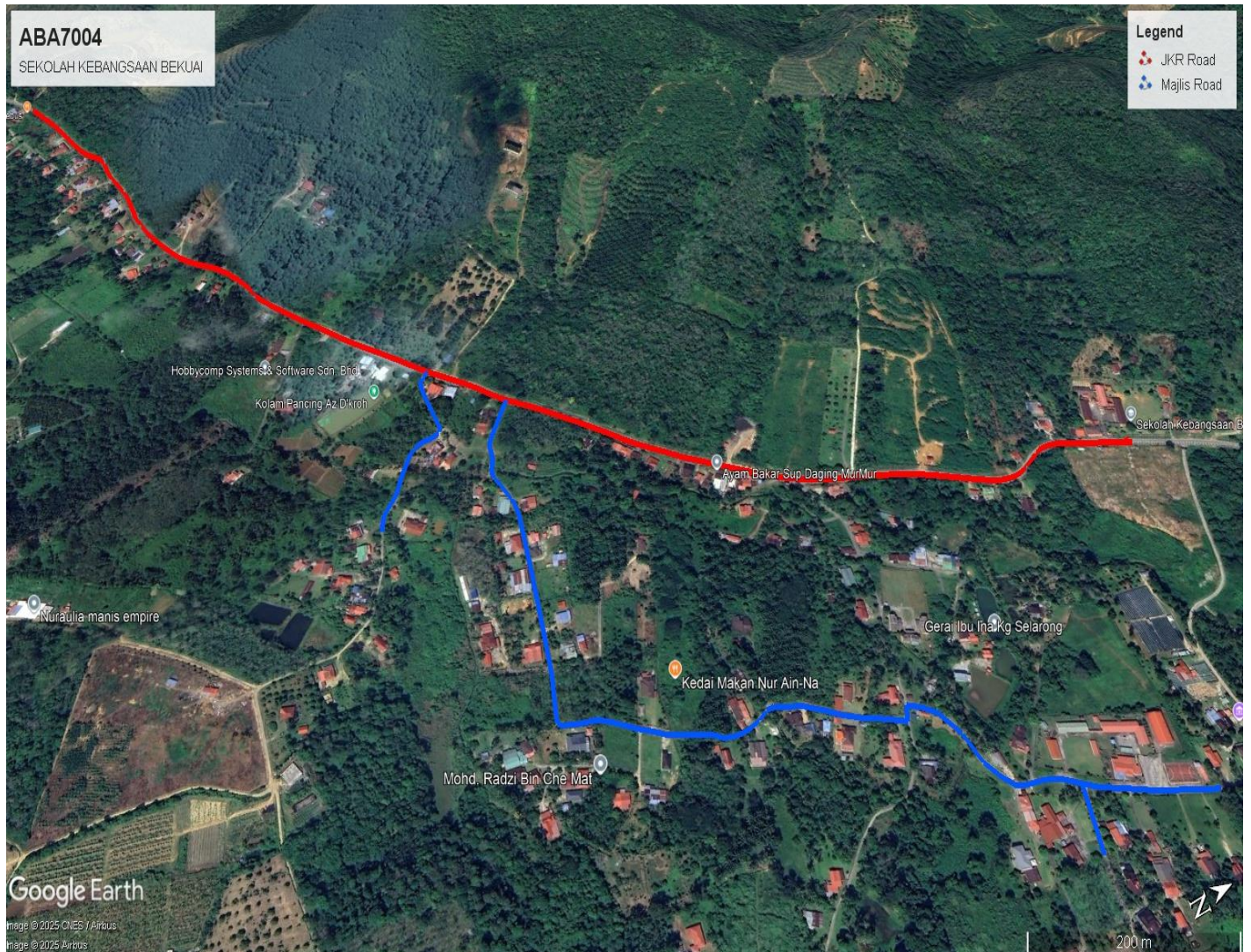
3.1 Overview Site Area



3.2 Site boundary



3.3 Road Boundary



4.0 PROPOSED NEW POLE

Proposed New Pole Coordinate					
No.	Pole Number	Distance (m)	Latitude	Longitude	Local Authority
1	FDC POLE	35	5.687376	100.988285	JKR
2	T001	35	5.687090	100.988152	JKR
3	T002	35	5.687376	100.988285	JKR
4	T003	25	5.687160	100.988318	JKR
5	T004	38	5.686850	100.988172	JKR
6	T005	35	5.686556	100.988036	JKR
7	T006	28	5.686291	100.988043	JKR
8	T007	33	5.686015	100.988162	JKR
9	T008	37	5.685680	100.988163	JKR
10	T009	37	5.685378	100.988013	JKR
11	T010	34	5.685113	100.987868	JKR
12	T011	34	5.684847	100.987712	JKR
13	T012	35	5.684566	100.987570	JKR
14	T013	27	5.684349	100.987454	JKR
15	T014	30	5.684114	100.987345	JKR
16	T015	28	5.683880	100.987246	JKR
17	T016	26	5.683670	100.987129	JKR
18	T017	32	5.683423	100.986978	JKR
19	T018	36	5.683159	100.986778	JKR
20	T019	23	5.682993	100.986649	JKR
21	T020	26	5.682809	100.986485	JKR
22	T021	42	5.682532	100.986230	JKR
23	T022	39	5.682262	100.985990	JKR
24	T023	33	5.682049	100.985768	JKR
25	T024	34	5.681837	100.985537	JKR
26	T025	36	5.681622	100.985295	JKR
27	T026	35	5.681394	100.985071	JKR
28	T027	38	5.681170	100.984818	JKR
29	T028	25	5.681018	100.984653	JKR
30	T029	33	5.680804	100.984864	Majlis Daerah Pengkalan Hulu
31	T030	31	5.680615	100.985069	Majlis Daerah Pengkalan Hulu
32	T031	40	5.680522	100.985420	Majlis Daerah Pengkalan Hulu
33	T032	39	5.680615	100.985758	Majlis Daerah Pengkalan Hulu
34	T033	38	5.680590	100.986108	Majlis Daerah Pengkalan Hulu
35	T034	34	5.680534	100.986422	Majlis Daerah Pengkalan Hulu
36	T035	39	5.680465	100.986773	Majlis Daerah Pengkalan Hulu
37	T036	40	5.680391	100.987124	Majlis Daerah Pengkalan Hulu
38	T037	39	5.680306	100.987469	Majlis Daerah Pengkalan Hulu

39	T038	40	5.680222	100.987825	Majlis Daerah Pengkalan Hulu
40	T039	35	5.680124	100.988133	Majlis Daerah Pengkalan Hulu
41	T040	18	5.680101	100.988300	Majlis Daerah Pengkalan Hulu
42	T041	35	5.680400	100.988413	Majlis Daerah Pengkalan Hulu
43	T042	40	5.680676	100.988643	Majlis Daerah Pengkalan Hulu
44	T043	40	5.680959	100.988877	Majlis Daerah Pengkalan Hulu
45	T044	39	5.681279	100.989027	Majlis Daerah Pengkalan Hulu
46	T045	37	5.681560	100.989208	Majlis Daerah Pengkalan Hulu
47	T046	39	5.681886	100.989078	Majlis Daerah Pengkalan Hulu
48	T047	39	5.682227	100.989186	Majlis Daerah Pengkalan Hulu
49	T048	33	5.682465	100.989375	Majlis Daerah Pengkalan Hulu
50	T049	40	5.682752	100.989591	Majlis Daerah Pengkalan Hulu
51	T050	38	5.683060	100.989741	Majlis Daerah Pengkalan Hulu
52	T051	17	5.683133	100.989603	Majlis Daerah Pengkalan Hulu
53	T052	39	5.683389	100.989861	Majlis Daerah Pengkalan Hulu
54	T053	39	5.683461	100.990212	Majlis Daerah Pengkalan Hulu
55	T054	38	5.683529	100.990553	Majlis Daerah Pengkalan Hulu
56	T055	39	5.683833	100.990732	Majlis Daerah Pengkalan Hulu
57	T056	40	5.684151	100.990892	Majlis Daerah Pengkalan Hulu
58	T057	36	5.684054	100.991206	Majlis Daerah Pengkalan Hulu
59	T058	32	5.683945	100.991474	Majlis Daerah Pengkalan Hulu
60	T059	39	5.684464	100.991060	Majlis Daerah Pengkalan Hulu
61	T060	28	5.684687	100.991179	Majlis Daerah Pengkalan Hulu
62	T061	39	5.684996	100.991352	Majlis Daerah Pengkalan Hulu
63	T062	32	5.685254	100.991493	Majlis Daerah Pengkalan Hulu
64	T063	16	5.680924	100.984539	JKR
65	T064	41	5.680675	100.984260	JKR
66	T065	33	5.680482	100.984028	JKR
67	T066	45	5.680235	100.983706	JKR
68	T067	31	5.680125	100.983976	Majlis Daerah Pengkalan Hulu
69	T068	37	5.680138	100.984308	Majlis Daerah Pengkalan Hulu
70	T069	28	5.680118	100.984563	Majlis Daerah Pengkalan Hulu
71	T070	39	5.679770	100.984659	Majlis Daerah Pengkalan Hulu
72	T071	46	5.679516	100.984987	Majlis Daerah Pengkalan Hulu
73	T072	39	5.679293	100.985268	Majlis Daerah Pengkalan Hulu
74	T073	37	5.679128	100.985567	Majlis Daerah Pengkalan Hulu
75	T074	34	5.680024	100.983481	JKR
76	T075	42	5.679798	100.983191	JKR
77	T076	41	5.679582	100.982902	JKR
78	T077	35	5.679400	100.982648	JKR
79	T078	36	5.679201	100.982386	JKR
80	T079	41	5.678982	100.982092	JKR
81	T080	32	5.678796	100.981865	JKR
82	T081	39	5.678593	100.981574	JKR



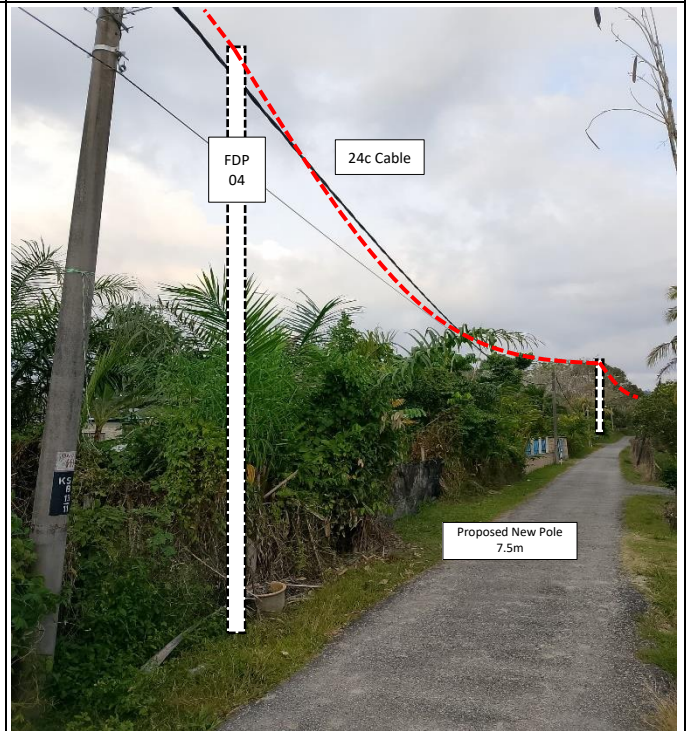
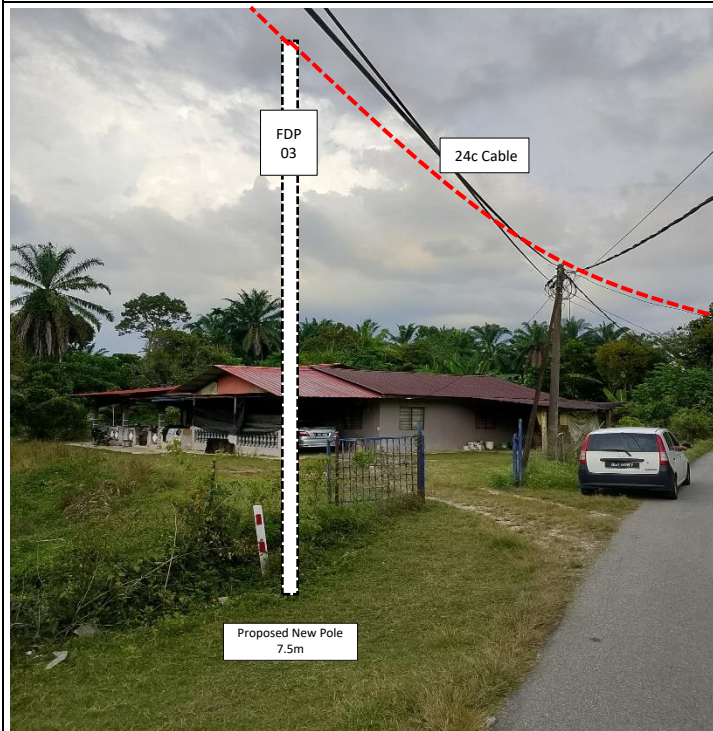
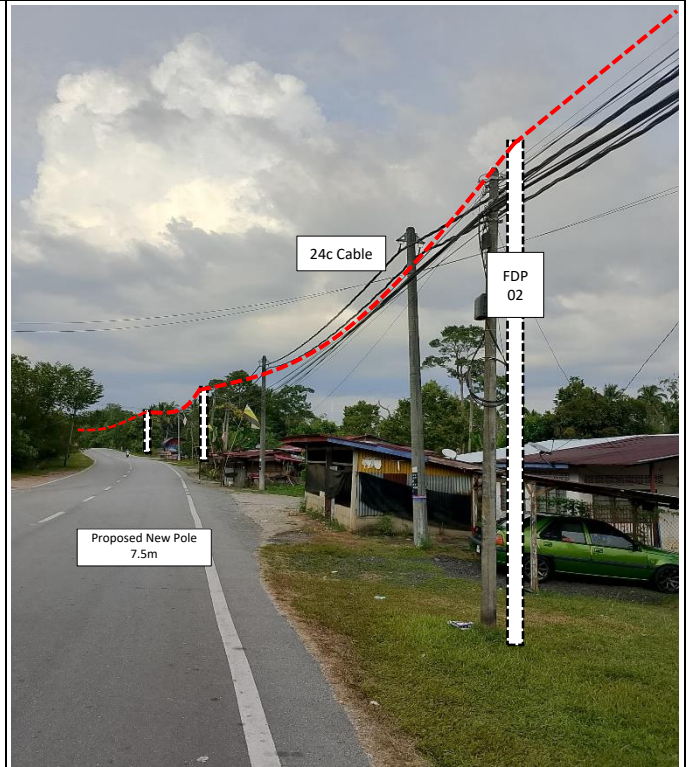
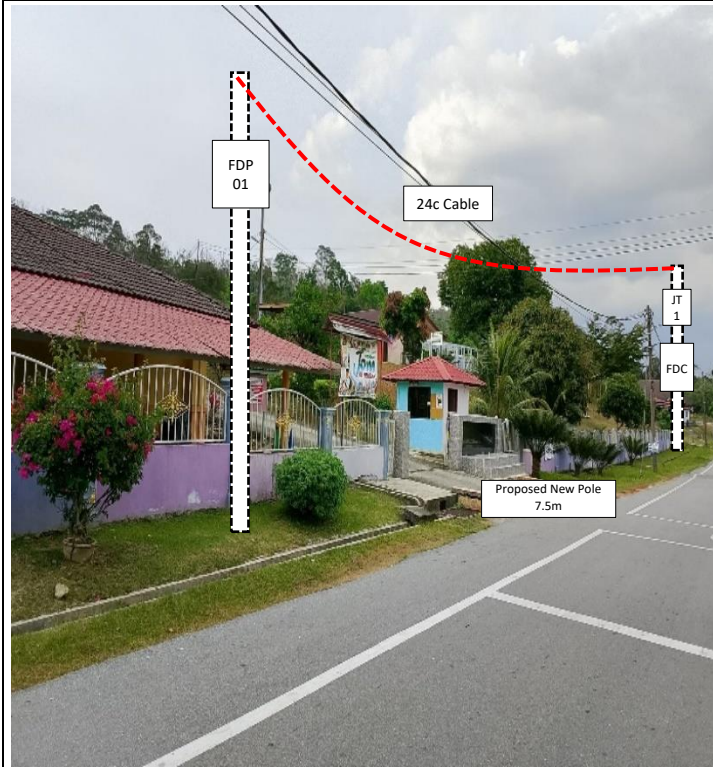
PROJEK PENYEDIAAN DAN PENYELENGGARAAN POINT OF PRESENCE (POP)
FASA 2: HAB INFRASTRUTUK GENTIAN OPTIK BERHAMPIRAN DENGAN
SEKOLAH, KAWASAN PERINDUSTRIAN, PREMIS KERAJAAN DAN KOMUNITI
SEKITARNYA OLEH KEMENTERIAN KOMUNIKASI MALAYSIA – ZON UTARA
(KKMM.400-11/17/132(1))

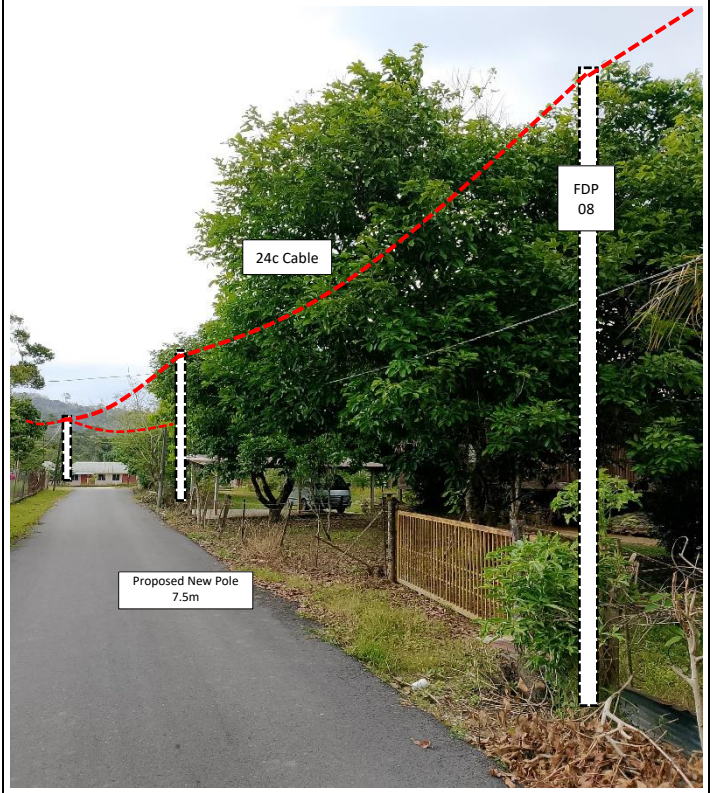
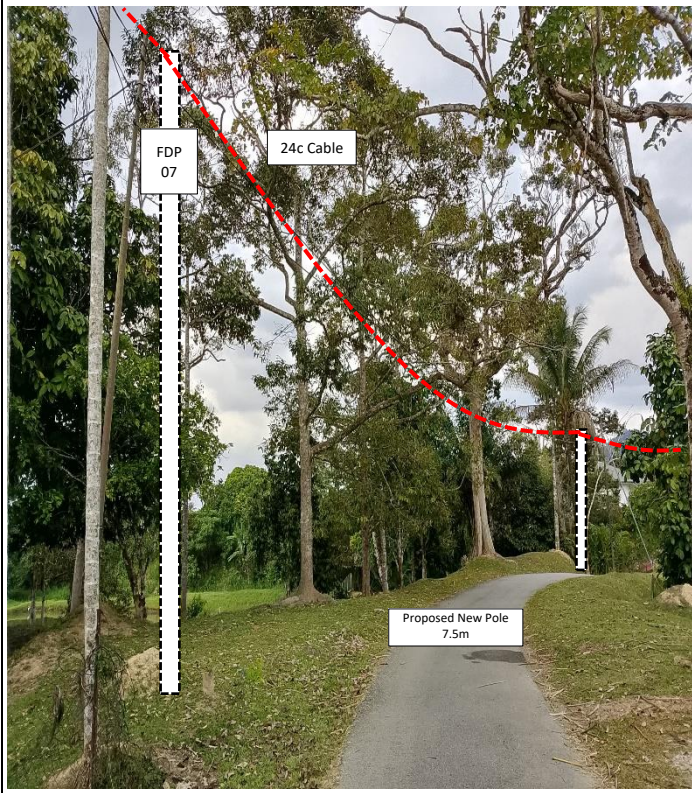
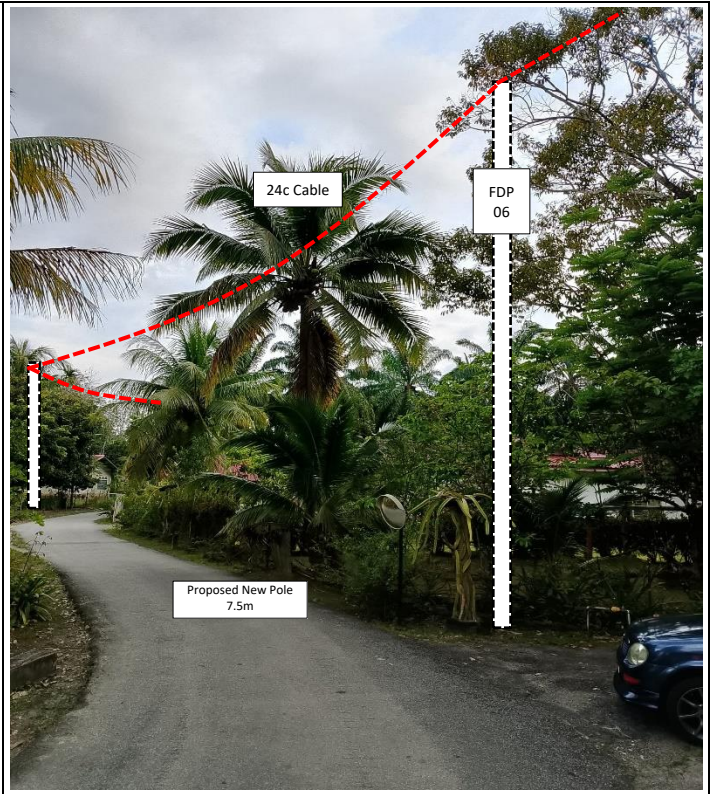
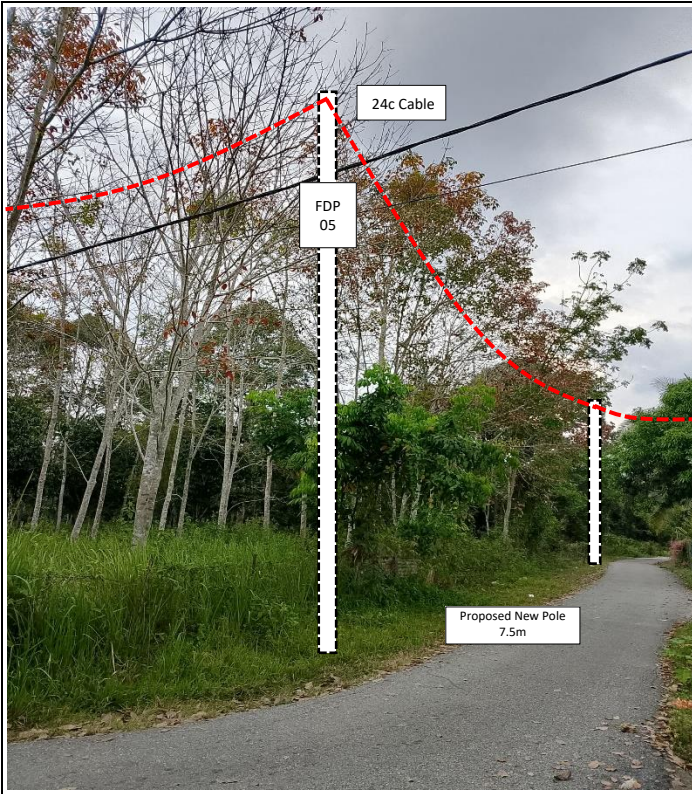


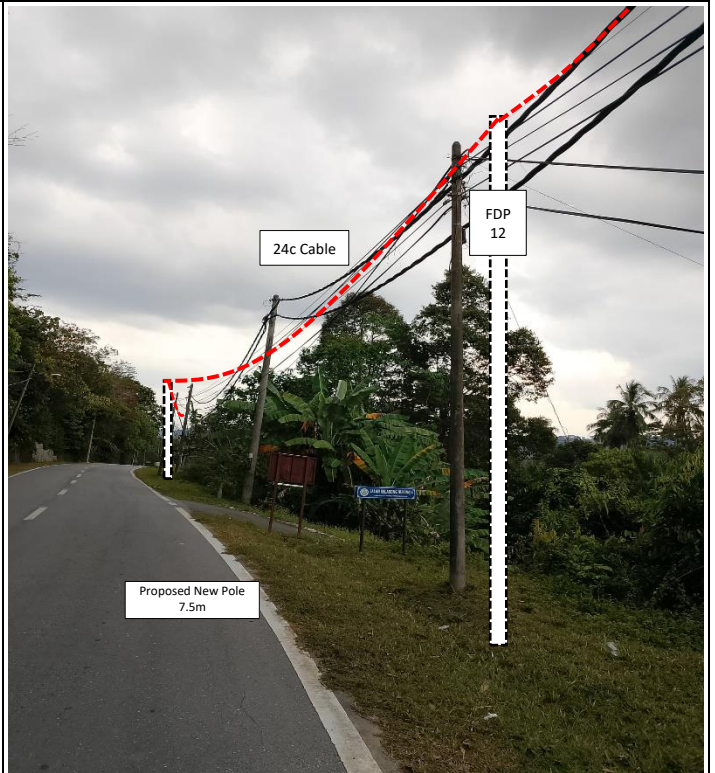
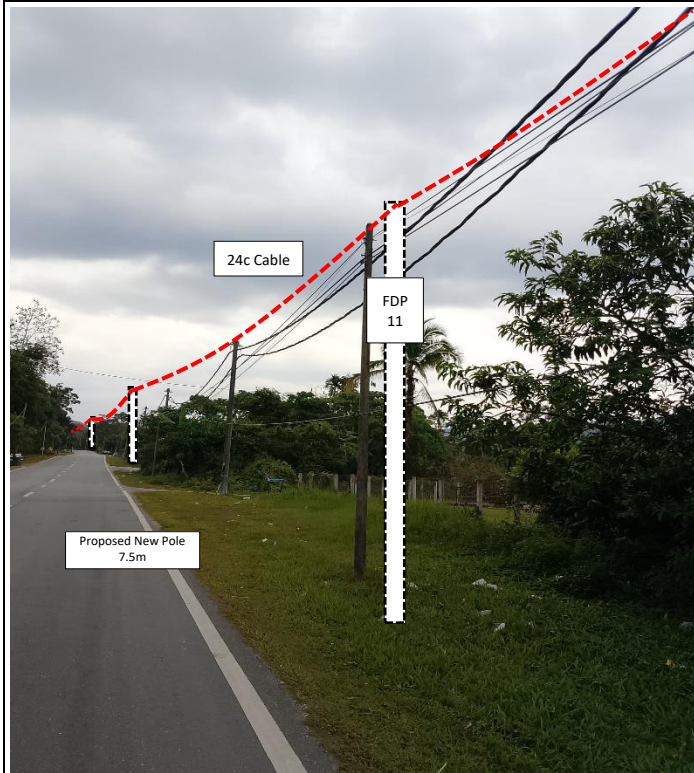
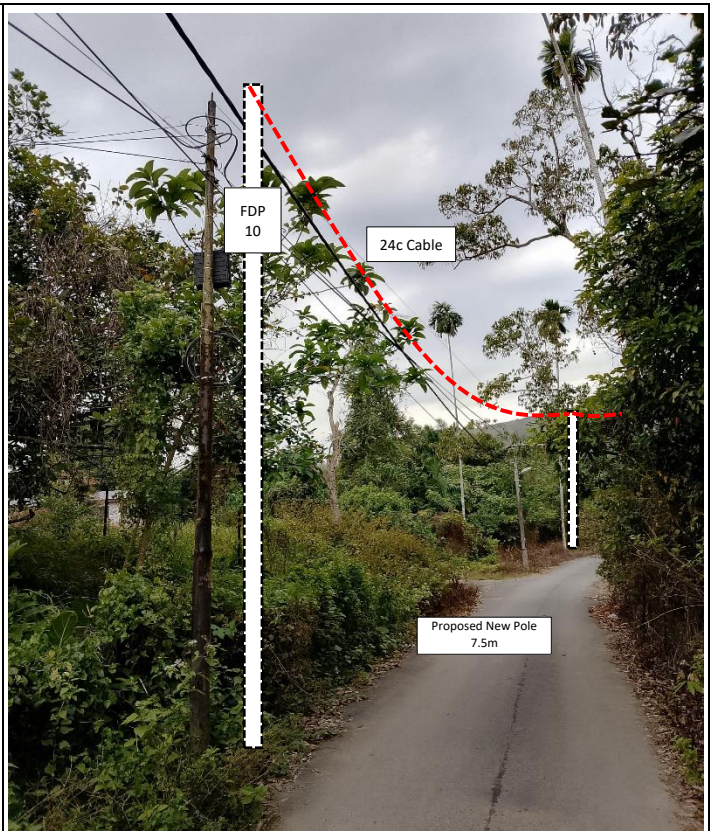
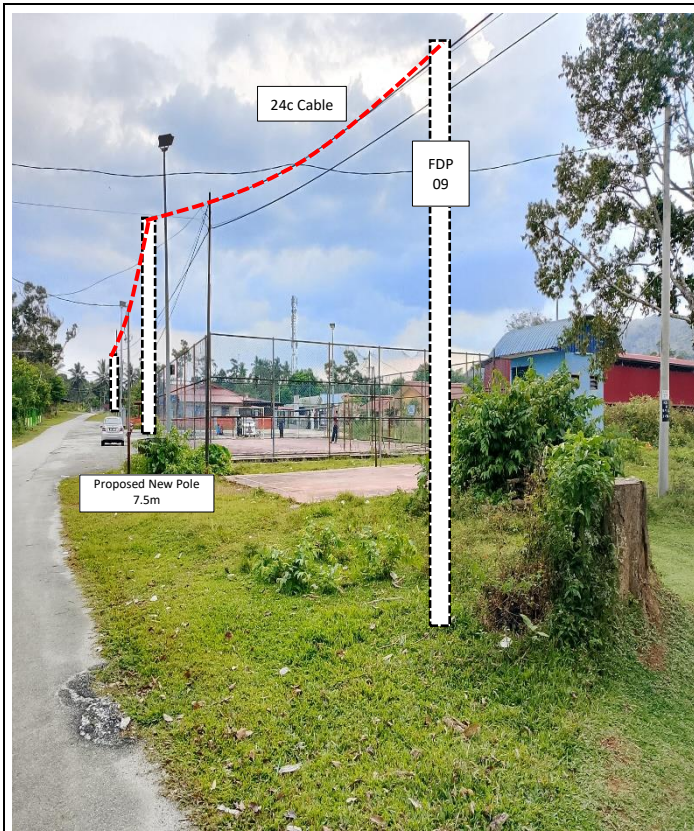
WABTECH SDN BHD
(1394387-X)

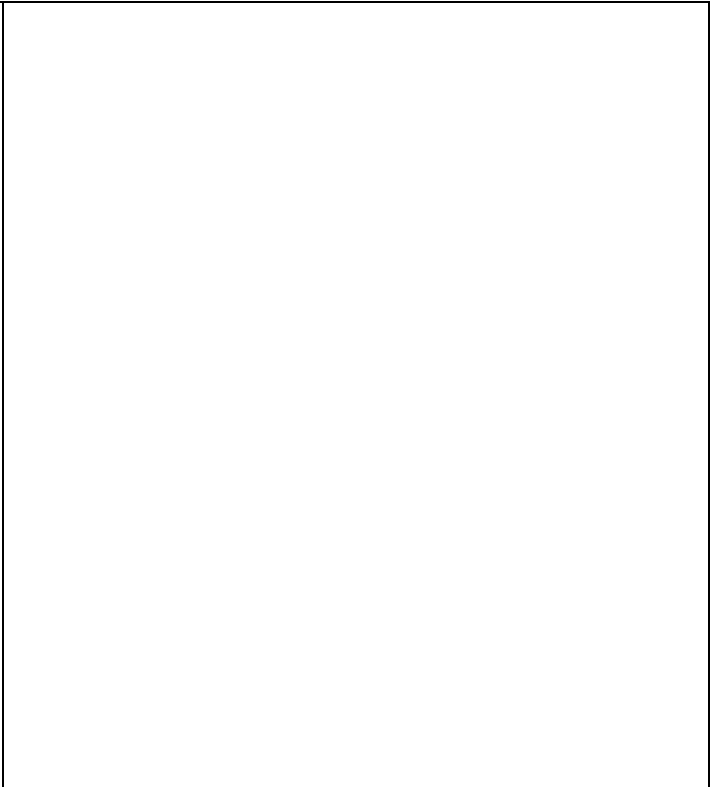
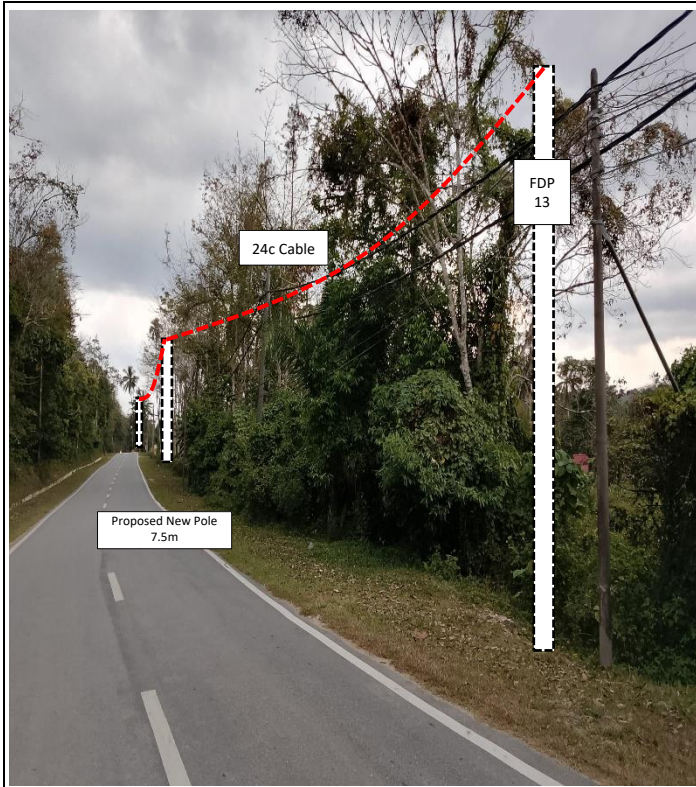
83	T082	35	5.678446	100.981291	JKR
84	T083	34	5.678293	100.981023	JKR
85	T084	38	5.678092	100.980755	JKR
86	T085	39	5.677902	100.980458	JKR
87	T086	37	5.677714	100.980182	JKR
88	T087	32	5.677568	100.979927	JKR
89	T088	41	5.677444	100.979582	JKR
90	T089	37	5.677381	100.979262	JKR
91	T090	35	5.677339	100.978951	JKR
92	T091	35	5.677312	100.978649	JKR
93	T092	35	5.677212	100.978348	JKR
94	T093	31	5.677164	100.978045	JKR
95	T094	38	5.677054	100.977785	JKR
96	T095	34	5.676898	100.977484	JKR
97	T096	35	5.676782	100.977201	JKR
98	T097	36	5.676676	100.976910	JKR
99	T098	33	5.676561	100.976614	JKR
100	T099	37	5.676452	100.976333	JKR
101	T100	37	5.676306	100.976034	JKR

5.0 SITE PHOTOS - PROPOSED NEW POLE











PROJEK PENYEDIAAN DAN PENYELENGGARAAN POINT OF PRESENCE (POP)
FASA 2: HAB INFRASTRUTUK GENTIAN OPTIK BERHAMPIRAN DENGAN
SEKOLAH, KAWASAN PERINDUSTRIAN, PREMIS KERAJAAN DAN KOMUNITI
SEKITARNYA OLEH KEMENTERIAN KOMUNIKASI MALAYSIA – ZON UTARA
(KKMM.400-11/17/132(1))



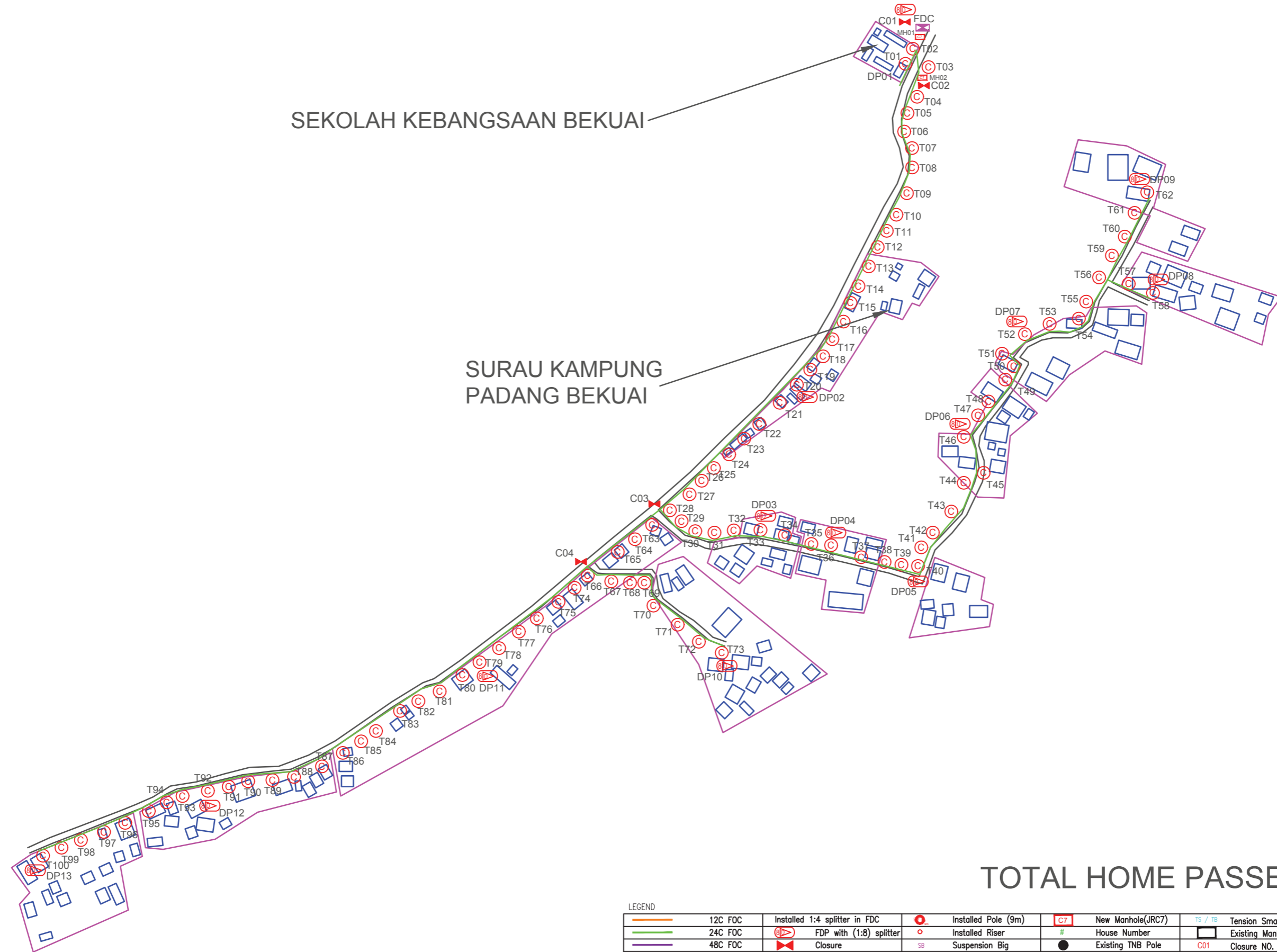
WABTECH SDN BHD
(1398287-X)

6.0 3rd PARTIES DEPENDENCIES

NO	LOCAL COUNCIL / AUTHORITY	REMARK
1	Majlis Daerah Pengkalan Hulu	1520
2	JKR Daerah Pengkalan Hulu	1953

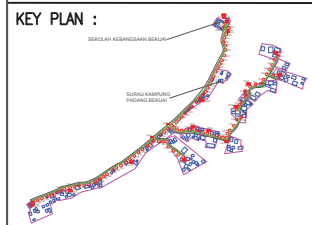
SEKOLAH KEBANGSAAN BEKUAI

SURAU KAMPUNG PADANG BEKUAI



TOTAL HOME PASSES: 104 UNITS

LEGEND											
	12C FOC		Installed 1:4 splitter in FDC		Installed Pole (9m)		New Manhole(JRC7)		Tension Small / Tension Big		MH NO.
	24C FOC		FDP with (1:8) splitter		Installed Riser		House Number		Existing Manhole		Existing TNB Pole NO.
	48C FOC		Closure		Suspension Big		Existing TNB Pole		Closure NO.		New Pole NO.
	96C FOC		New Manhole (PIT)		Suspension Small		LOOP		FDP NO.		SEE A-A in this page
	144C FOC		Installed Pole (7.5M)		FDC		FDP Boundary		FDC NO.		SEE SHEET XXXX



PROJECT OWNER :

MAIN CONTRACTOR :

PRIVASAT

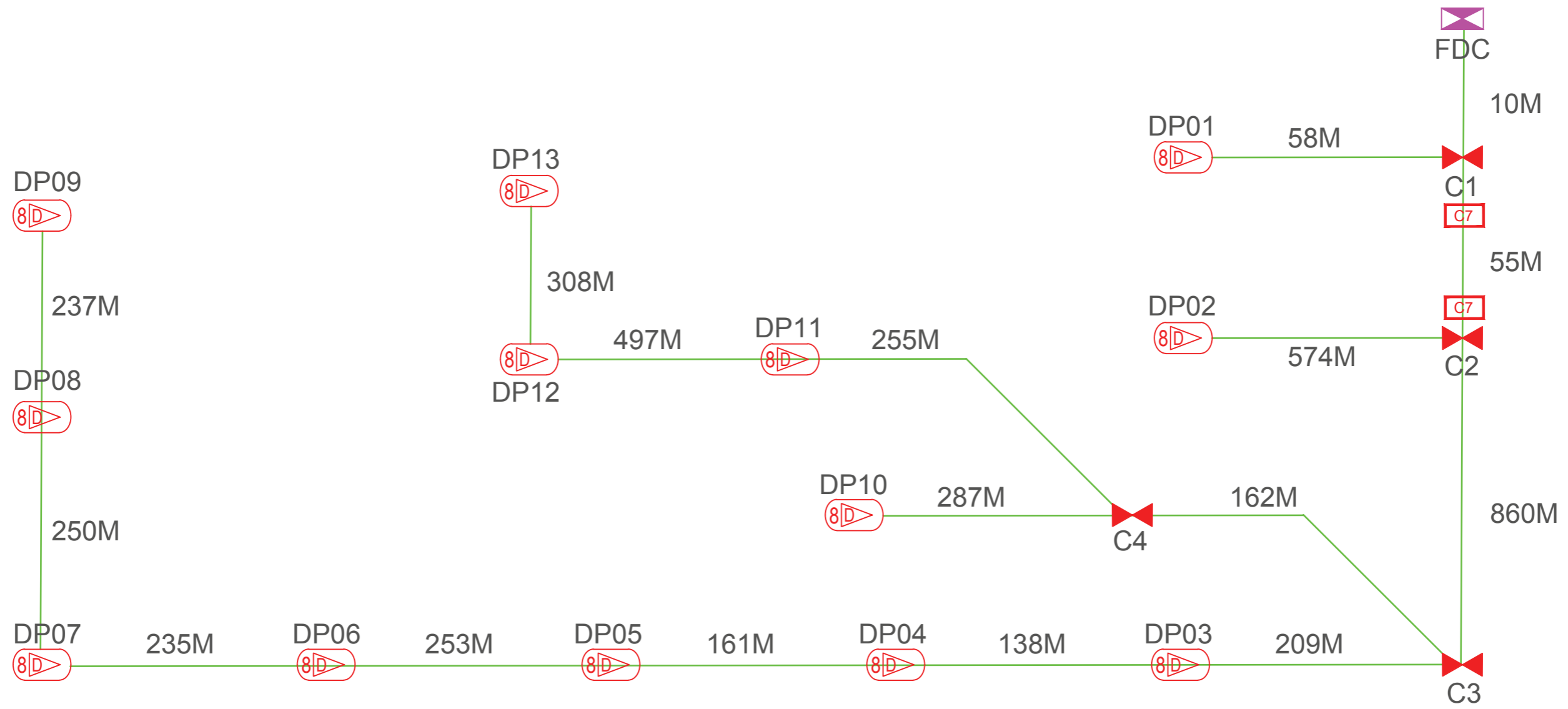
SUB-CONTRACTOR :

PROJECT TITLE:
 CONTRACT FOR THE PROVISION OF SUPPLY, INSTALLATION, AND COMMISSIONING OF FTTX NETWORK INFRASTRUCTURE - POP 2 PROJECT D-SIDE - ABA7004 - SK BEKUI

DRAWING TITLE:
 ABA7004 SK BEKUI

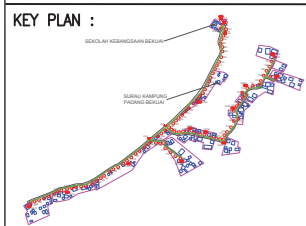
PROJECT PHASE:
 PROJECT PHASE

Design By	ENGINEER	Date	DATE
Drawn By	CAD ENGINEER	Scale	NTS
Checked By	ENGINEER	Job Number	JOB/NUMBER
DRAWING NUMBER :		Sheet :	
DRAWING/NUMBER		1/1	
THIS PRINT AND ITS COPYRIGHT ARE THE PROPERTY		Size :	
		A3	



TOTAL FOC DISTANCE: 4,262 METERS

LEGEND	
	12C FOC
	24C FOC
	48C FOC
	96C FOC
	144C FOC
	Installed 1:4 splitter in FDC
	FDP with (1:8) splitter
	Closure
	New Manhole (PIT)
	Installed Pole (7.5M)
	Installed Pole (9m)
	Installed Riser
	Suspension Big
	Suspension Small
	FDC
	New Manhole(JRC7)
	House Number
	Existing TNB Pole
	LOOP
	FDP Boundary
	Tension Small / Tension Big
	Existing Manhole
	Closure NO.
	FDP NO.
	FDC NO.
	MH NO.
	Existing TNB Pole NO.
	New Pole NO.
	SEE A-A in this page
	SEE SHEET X/XX



PROJECT OWNER :

MAIN CONTRACTOR

SUB-CONTRACTOR :

PROJECT TITLE:
 CONTRACT FOR THE PROVISION OF SUPPLY, INSTALLATION, AND COMMISSIONING OF FTTX NETWORK INFRASTRUCTURE - POP 2 PROJECT D-SIDE - ABA7004 - SK BEKUAI

DRAWING TITLE:
 ABA7004 SK BEKUAI

PROJECT PHASE:
 PROJECT PHASE

Design By	ENGINEER	Date	DATE
Drawn By	CAD ENGINEER	Scale	NTS
Checked By	ENGINEER	Job Number	JOB/NUMBER
DRAWING NUMBER :		Sheet :	
DRAWING/NUMBER		1/1	
THIS PRINT AND ITS COPYRIGHT ARE THE PROPERTY			
Size : A3			