

TECHNICAL PROPOSAL

POP2 AEB3044 SEKOLAH MENENGAH KEBANGSAAN BAGAN SERAI (D-SIDE)

Company Name	: SEGALA DELIMA (M) SDN BHD
Company Address	: No. 8, Jalan Ampang Baru 6B, Pusat Perdagangan Baru, 31350 Ipoh, Perak
Prepared By	: Nasrohaizan Bin Mustafa
Date	: 11/12/2024



Starting Point

Site / Boundary Name	: SEKOLAH MENENGAH KEBANGSAAN BAGAN SERAI
District	: BAGAN SERAI
Postcode	: 34300
State	: PERAK
GPS Coordinate	: 5.010846 , 100.543336
LRD	: A

End Point

Site / Boundary Name	: KAMPUNG ALOR SENGGUT
Address	: LINTANG MAJU 2
District	: BAGAN SERAI
Postcode	: 34300
State	: Perak
GPS Coordinate	: 5.008415 , 100.547280
LRD	: B

1.0 WORK SUMMARY

NO	PROPOSED DISTANCE AND METHOD	UNIT	QUANTITY
1	Horizontal Directional Drilling (HDD)	m	0
2	Carriage Way Open Trench(CW)	m	0
3	Grass Verge Open Trenching (GV)	m	0
4	Micro Trenching (MT)	m	0
Total			0

NO	OTHER INFORMATION	UNIT	QUANTITY
1	Installation of Short Span ADSS Fiber Cables	m	2800
2	Install New Pole	ea	85
3	Install New JRC7 Manhole	ea	0
4	Install GI Riser 100mm	ea	0
5	Install Fiber Distribution Point and Closure (Splicing, Termination and Testing)	ea	17
6	Estimated Time Required for Completion	days	30

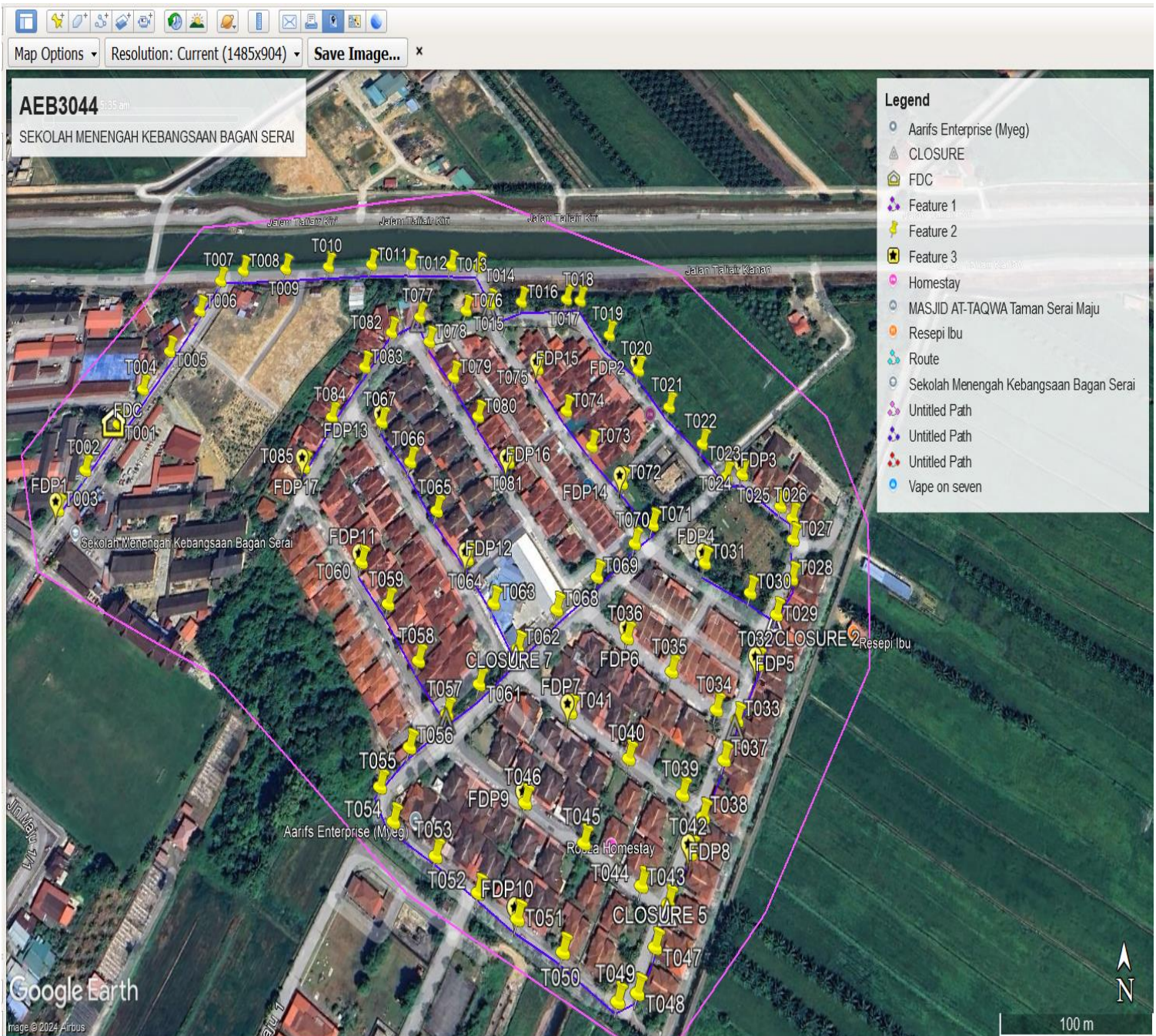
2.0 LOCAL AUTHORITY SUMMARY

Daerah Batu Gajah

NO	ITEMS	Owner	Quantity	Distance (m)
1	HDD	JKR	-	-
		Majlis	-	-
		Estate / Private Land	-	-
2	New Pole	JKR	-	-
		Majlis	85	2800
		Estate / Private Land	-	-
Total Distance (m)				2800

3.0 SITE PLAN (KMZ)

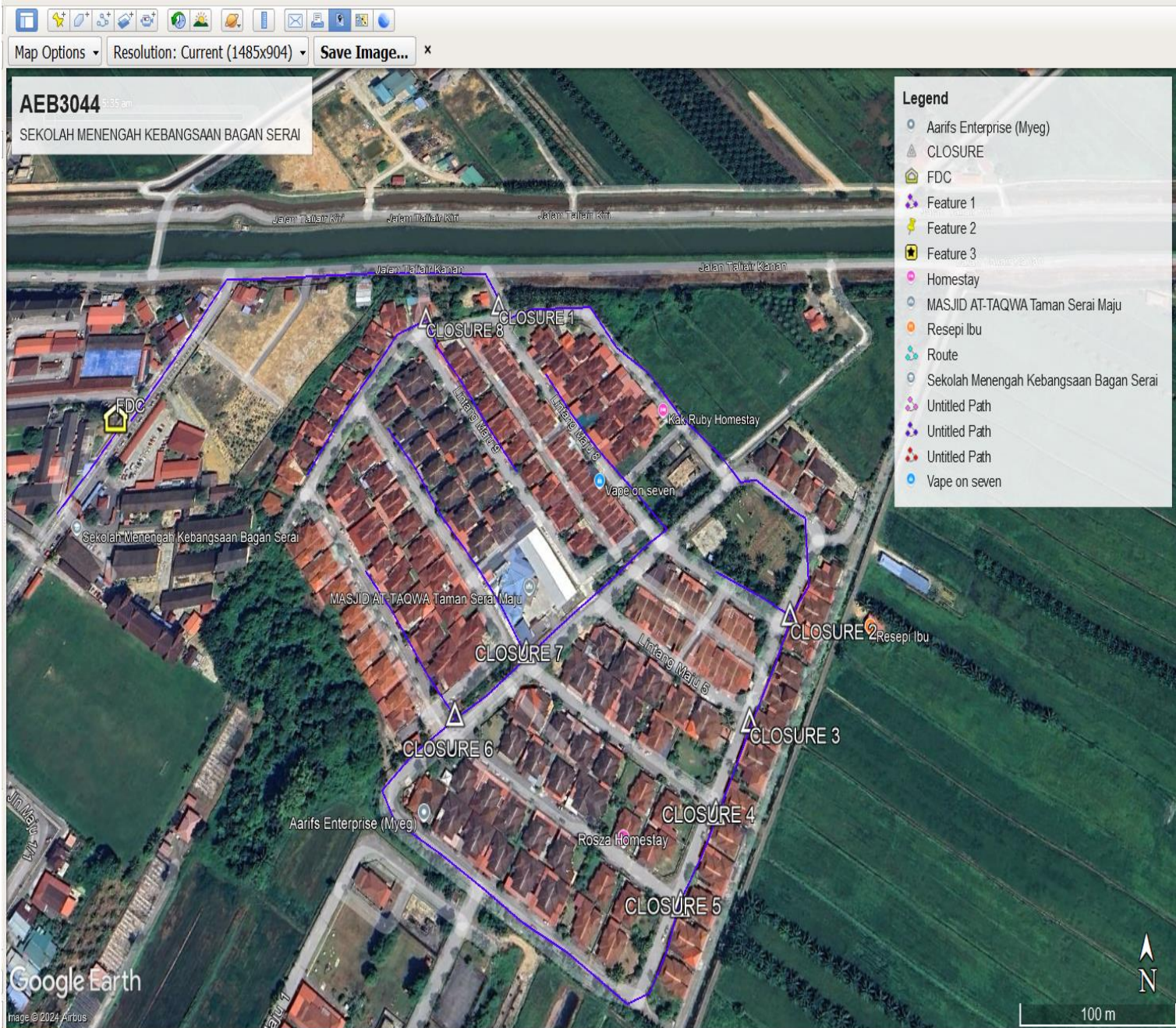
3.1 Overview Site Area (Propose New Pole)



3.2 Proposed FDP and Closure



3.3 Site Plan - KMZ Routing (All Local Authority)



Red Colour - JKR
Road Blue Colour - Majlis Road

3.0 PROPOSED NEW MANHOLE

Proposed New Manhole Coordinate					
No.	Manhole Number	Distance (m)	Latitude	Longitude	Local Authority
1	MH01	-	-	-	-
2	MH02	-	-	-	-

4.0 PROPOSED NEW POLE

Exiting Pole Coordinate					
No.	Pole Number	Distance (m)	Latitude	Longitude	Local Authority
1	T001	35.0	5.011301	100.543632	Majlis Daerah Kerian
2	T002	35.0	5.011017	100.543458	Majlis Daerah Kerian
3	T003	35.0	5.010779	100.543326	Majlis Daerah Kerian
4	T004	35.00	5.011528	100.543759	Majlis Daerah Kerian
5	T005	35.00	5.011785	100.543904	Majlis Daerah Kerian
6	T006	35.00	5.012063	100.544079	Majlis Daerah Kerian
7	T007	35.00	5.012268	100.544203	Majlis Daerah Kerian
8	T008	35.00	5.012343	100.544367	Majlis Daerah Kerian
9	T009	35.00	5.012350	100.544697	Majlis Daerah Kerian
10	T010	35.00	5.012357	100.545032	Majlis Daerah Kerian
11	T011	35.00	5.012365	100.545369	Majlis Daerah Kerian
12	T012	35.00	5.012370	100.545674	Majlis Daerah Kerian
13	T013	35.00	5.012373	100.545984	Majlis Daerah Kerian
14	T014	35.00	5.012369	100.546199	Majlis Daerah Kerian
15	T015	35.00	5.012125	100.546298	Majlis Daerah Kerian
16	T016	35.00	5.012145	100.546537	Majlis Daerah Kerian
17	T017	35.00	5.012164	100.546885	Majlis Daerah Kerian
18	T018	35.00	5.012154	100.546991	Majlis Daerah Kerian
19	T019	35.00	5.011918	100.547212	Majlis Daerah Kerian
20	T020	35.00	5.011680	100.547427	Majlis Daerah Kerian
21	T021	35.00	5.011434	100.547647	Majlis Daerah Kerian
22	T022	35.00	5.011200	100.547879	Majlis Daerah Kerian
23	T023	35.00	5.010998	100.548036	Majlis Daerah Kerian
24	T024	35.00	5.011012	100.548152	Majlis Daerah Kerian
25	T025	35.00	5.010822	100.548408	Majlis Daerah Kerian
26	T026	35.00	5.010750	100.548484	Majlis Daerah Kerian
27	T027	35.00	5.010625	100.548476	Majlis Daerah Kerian
28	T028	35.00	5.010404	100.548446	Majlis Daerah Kerian
29	T029	35.00	5.010211	100.548322	Majlis Daerah Kerian
30	T030	35.00	5.010331	100.548154	Majlis Daerah Kerian
31	T031	35.00	5.010491	100.547852	Majlis Daerah Kerian
32	T032	35.00	5.009949	100.548173	Majlis Daerah Kerian

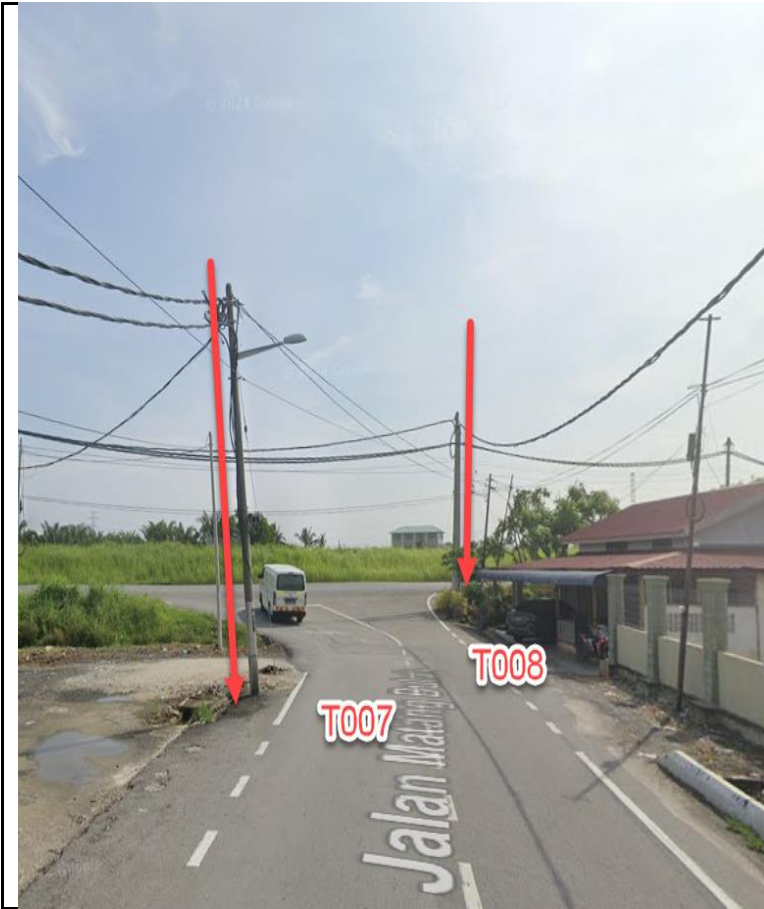
33	T033	35.00	5.009661	100.548014	Majlis Daerah Kerian
34	T034	35.00	5.009718	100.547885	Majlis Daerah Kerian
35	T035	35.00	5.009914	100.547600	Majlis Daerah Kerian
36	T036	35.00	5.010079	100.547307	Majlis Daerah Kerian
37	T037	35.00	5.009466	100.547916	Majlis Daerah Kerian
38	T038	35.00	5.009192	100.547765	Majlis Daerah Kerian
39	T039	35.00	5.009299	100.547641	Majlis Daerah Kerian
40	T040	35.00	5.009476	100.547304	Majlis Daerah Kerian
41	T041	35.00	5.009702	100.546928	Majlis Daerah Kerian
42	T041	35.00	5.009024	100.547676	Majlis Daerah Kerian
43	T043	35.00	5.008798	100.547531	Majlis Daerah Kerian
44	T044	35.00	5.008879	100.547367	Majlis Daerah Kerian
45	T045	35.00	5.009071	100.547015	Majlis Daerah Kerian
46	T046	35.00	5.009258	100.546643	Majlis Daerah Kerian
47	T047	35.00	5.008611	100.547443	Majlis Daerah Kerian
48	T048	35.00	5.008417	100.547331	Majlis Daerah Kerian
49	T049	35.00	5.008382	100.547214	Majlis Daerah Kerian
50	T050	35.00	5.008588	100.546889	Majlis Daerah Kerian
51	T051	35.00	5.008731	100.546612	Majlis Daerah Kerian
52	T052	35.00	5.008849	100.546366	Majlis Daerah Kerian
53	T053	35.00	5.009013	100.546094	Majlis Daerah Kerian
54	T054	35.00	5.009168	100.545821	Majlis Daerah Kerian
55	T055	35.00	5.009325	100.545725	Majlis Daerah Kerian
56	T056	35.00	5.009514	100.545897	Majlis Daerah Kerian
57	T057	35.0	5.009678	100.546126	Majlis Daerah Kerian
58	T058	35.0	5.009931	100.545928	Majlis Daerah Kerian
59	T059	35.0	5.010215	100.545708	Majlis Daerah Kerian
60	T060	35.0	5.010435	100.545509	Majlis Daerah Kerian
61	T061	35.0	5.009831	100.546328	Majlis Daerah Kerian
62	T062	35.0	5.010012	100.546577	Majlis Daerah Kerian
63	T063	35.0	5.010234	100.546410	Majlis Daerah Kerian
64	T064	35.0	5.010465	100.546223	Majlis Daerah Kerian
65	T065	35.0	5.010736	100.545995	Majlis Daerah Kerian
66	T066	35.0	5.011022	100.545789	Majlis Daerah Kerian
67	T067	35.0	5.011267	100.545563	Majlis Daerah Kerian
68	T068	35.0	5.010215	100.546833	Majlis Daerah Kerian
69	T069	35.0	5.010402	100.547107	Majlis Daerah Kerian
70	T070	35.0	5.010599	100.547370	Majlis Daerah Kerian
71	T071	35.0	5.010707	100.547499	Majlis Daerah Kerian
72	T072	35.0	5.010958	100.547290	Majlis Daerah Kerian
73	T073	35.0	5.011185	100.547075	Majlis Daerah Kerian
74	T074	35.0	5.011409	100.546890	Majlis Daerah Kerian
75	T075	35.0	5.011684	100.546674	Majlis Daerah Kerian
76	T076	35.0	5.012070	100.546115	Majlis Daerah Kerian
77	T077	35.0	5.011997	100.545771	Majlis Daerah Kerian

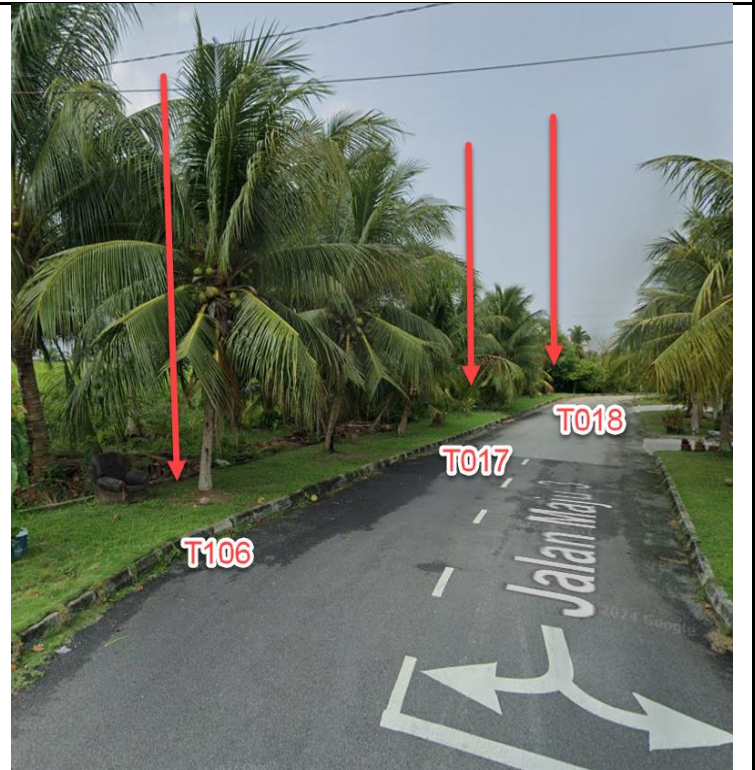
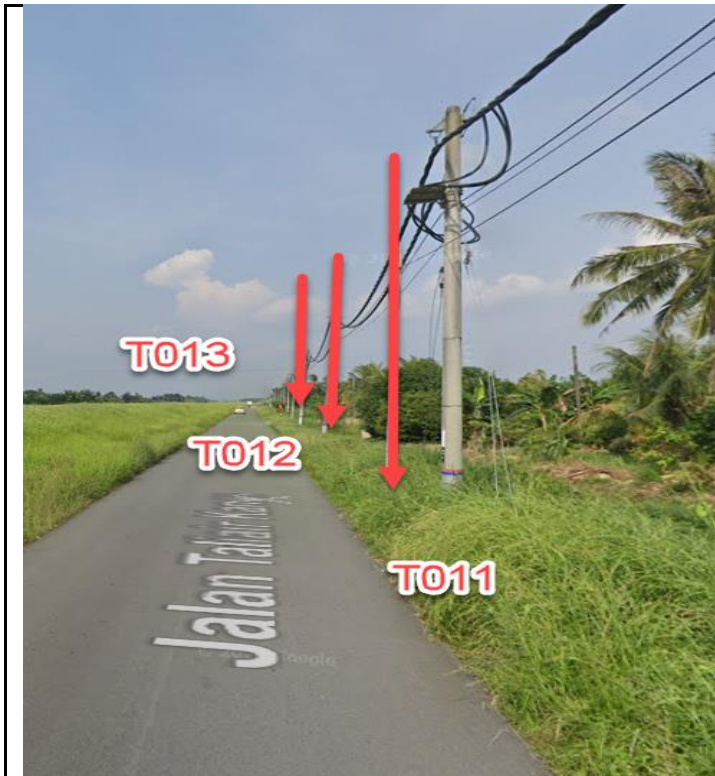
78	T078	35.0	5.011830	100.545856	Majlis Daerah Kerian
79	T079	35.0	5.011604	100.546051	Majlis Daerah Kerian
80	T080	35.0	5.011348	100.546247	Majlis Daerah Kerian
81	T081	35.0	5.011069	100.546479	Majlis Daerah Kerian
82	T082	35.0	5.011883	100.545569	Majlis Daerah Kerian
83	T083	35.0	5.011629	100.545401	Majlis Daerah Kerian
84	T084	35.0	5.011296	100.545202	Majlis Daerah Kerian
85	T085	35.0	5.011001	100.545038	Majlis Daerah Kerian

**5.0 SITE PHOTOS - PROPOSED HDD AND NEW MANHOLE
(N/A)**

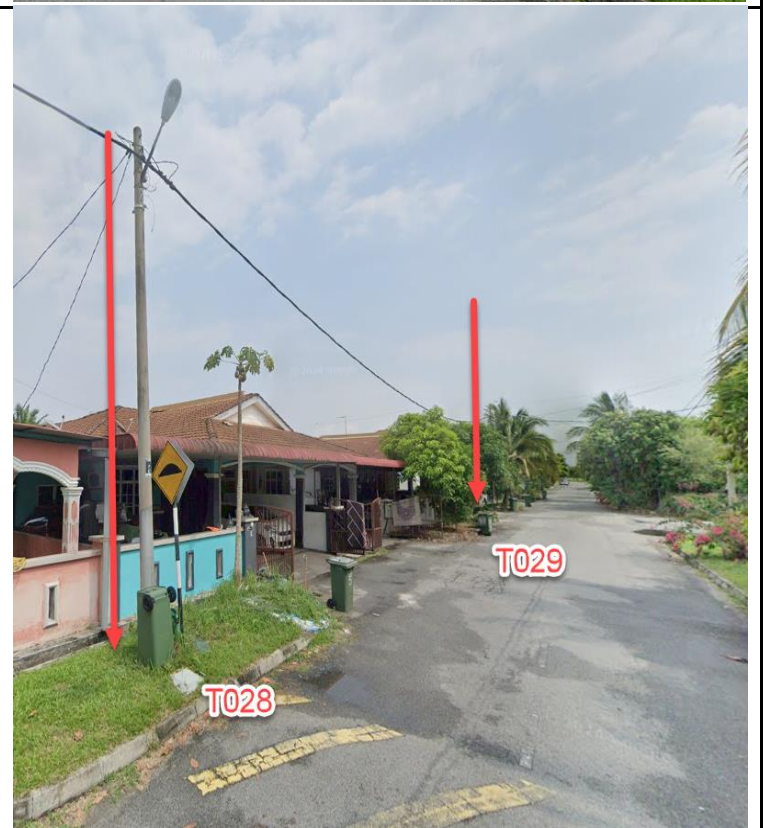
6.0 SITE PHOTOS - PROPOSED NEW POLE

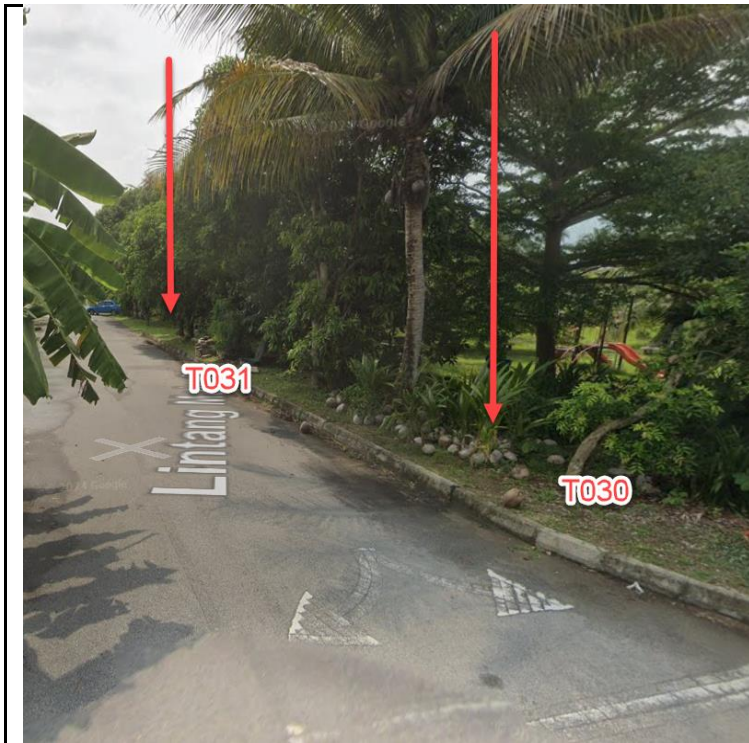


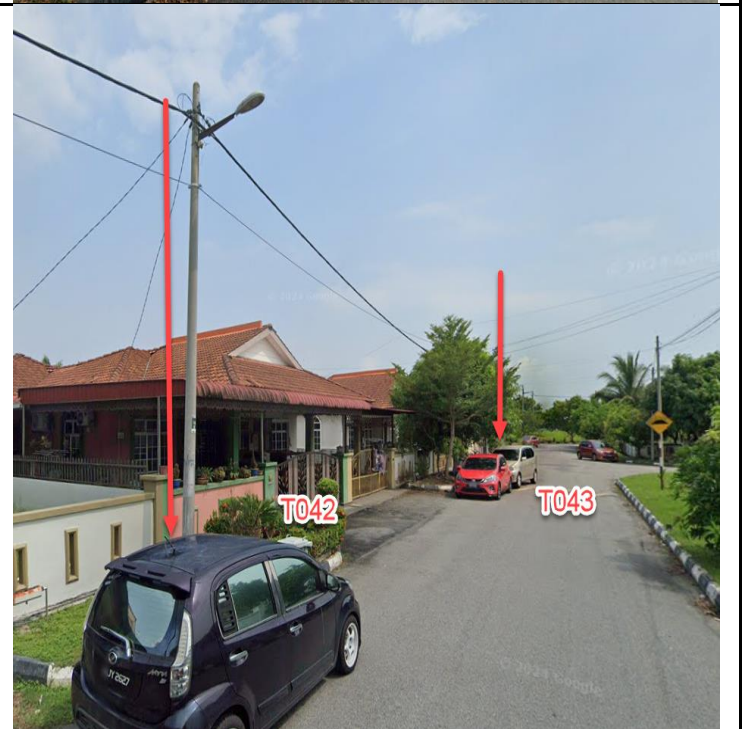




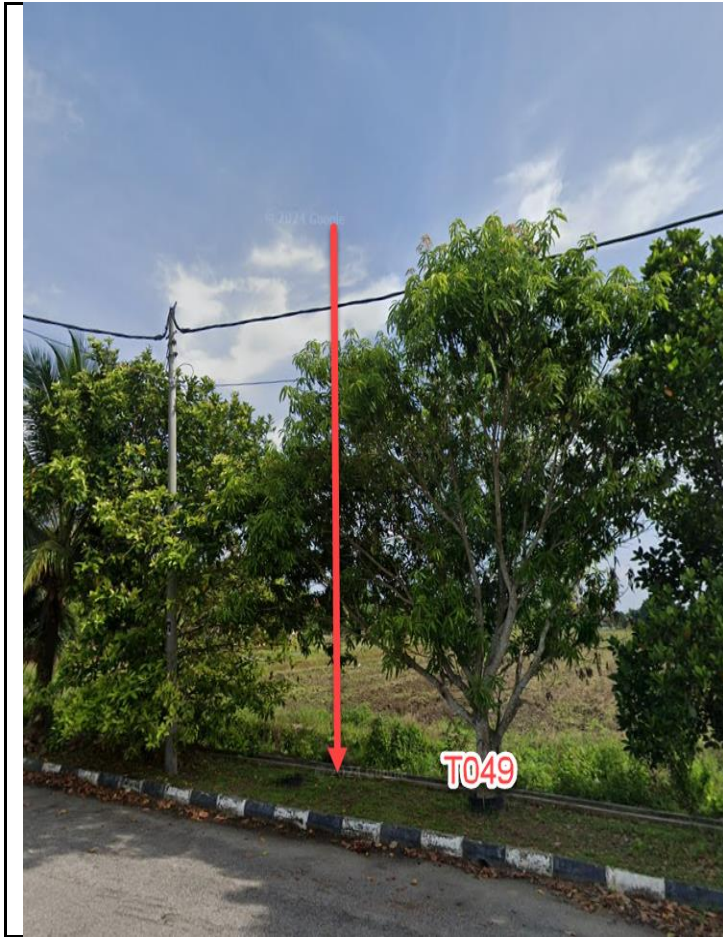










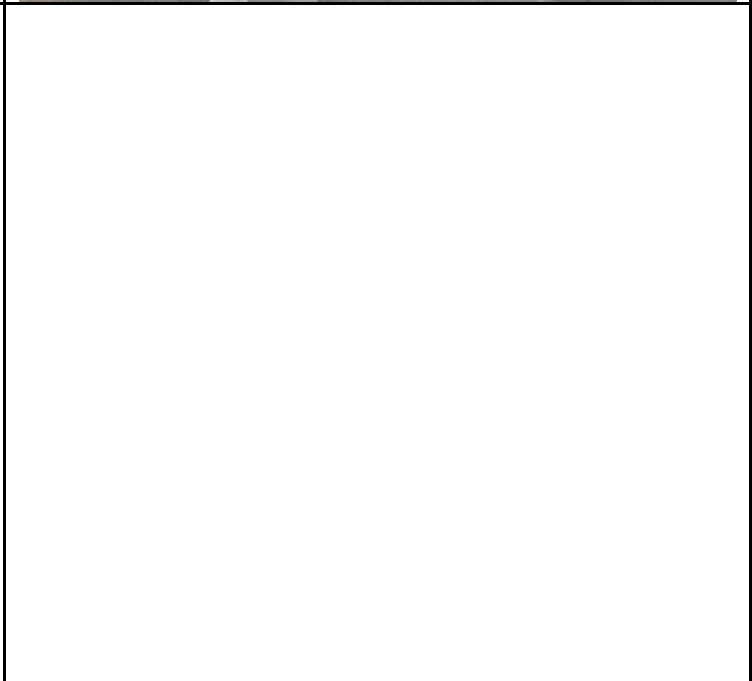




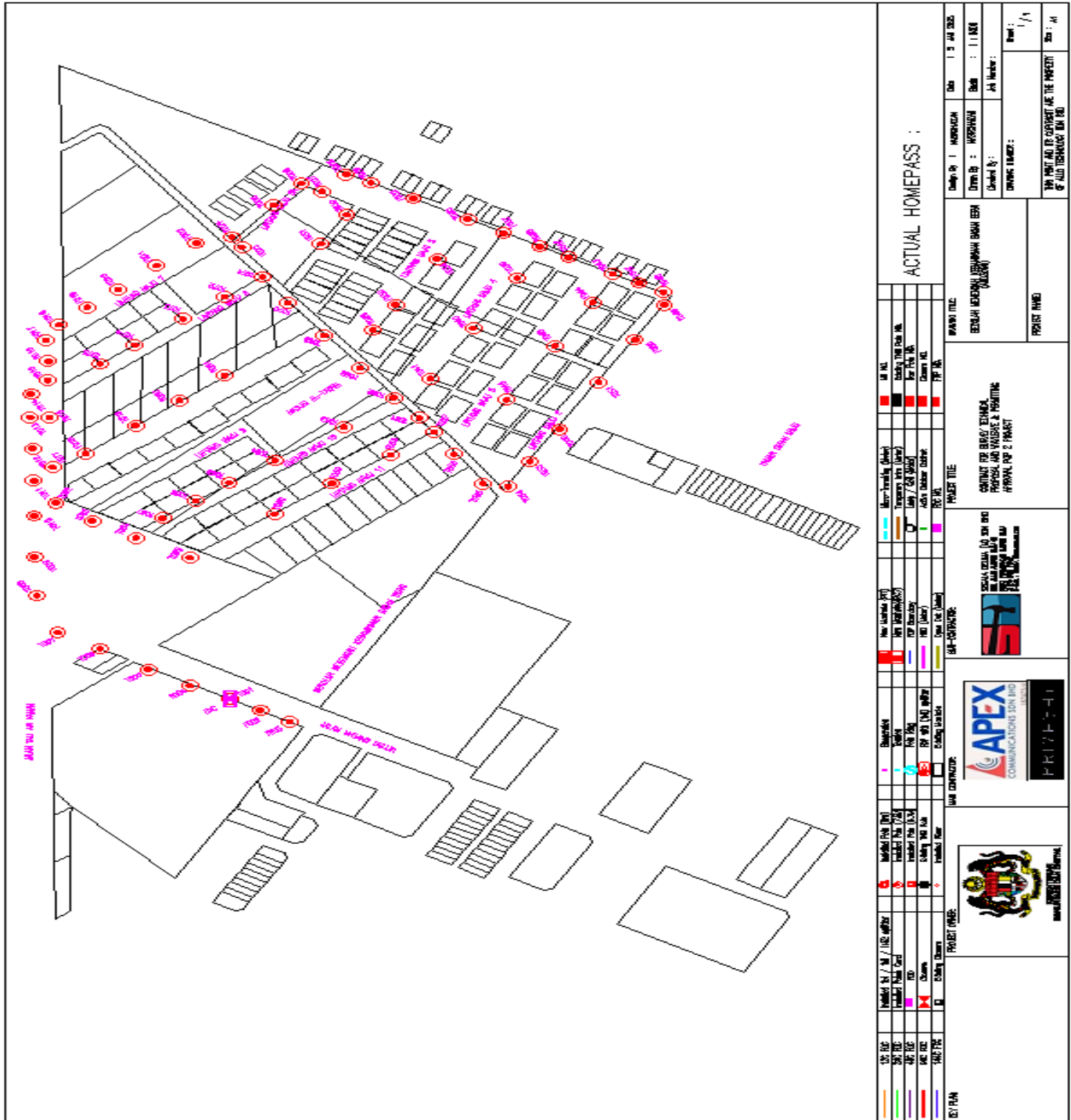








NO	LOCAL COUNCIL / AUTHORITY	REMARK
1	Majlis Daerah Kerian	2800m
2	JKR Daerah Kerian	-



<p>ACTUAL HOMEPASS :</p>	
<p>UJIAN: 1.000</p> <p>UJIAN: 2.000</p> <p>UJIAN: 3.000</p> <p>UJIAN: 4.000</p> <p>UJIAN: 5.000</p> <p>UJIAN: 6.000</p> <p>UJIAN: 7.000</p> <p>UJIAN: 8.000</p> <p>UJIAN: 9.000</p> <p>UJIAN: 10.000</p> <p>UJIAN: 11.000</p> <p>UJIAN: 12.000</p> <p>UJIAN: 13.000</p> <p>UJIAN: 14.000</p> <p>UJIAN: 15.000</p> <p>UJIAN: 16.000</p> <p>UJIAN: 17.000</p> <p>UJIAN: 18.000</p> <p>UJIAN: 19.000</p> <p>UJIAN: 20.000</p> <p>UJIAN: 21.000</p> <p>UJIAN: 22.000</p> <p>UJIAN: 23.000</p> <p>UJIAN: 24.000</p> <p>UJIAN: 25.000</p> <p>UJIAN: 26.000</p> <p>UJIAN: 27.000</p> <p>UJIAN: 28.000</p> <p>UJIAN: 29.000</p> <p>UJIAN: 30.000</p> <p>UJIAN: 31.000</p> <p>UJIAN: 32.000</p> <p>UJIAN: 33.000</p> <p>UJIAN: 34.000</p> <p>UJIAN: 35.000</p> <p>UJIAN: 36.000</p> <p>UJIAN: 37.000</p> <p>UJIAN: 38.000</p> <p>UJIAN: 39.000</p> <p>UJIAN: 40.000</p> <p>UJIAN: 41.000</p> <p>UJIAN: 42.000</p> <p>UJIAN: 43.000</p> <p>UJIAN: 44.000</p> <p>UJIAN: 45.000</p> <p>UJIAN: 46.000</p> <p>UJIAN: 47.000</p> <p>UJIAN: 48.000</p> <p>UJIAN: 49.000</p> <p>UJIAN: 50.000</p>	<p>DATE: 15 JUN 2023</p> <p>TIME: 11:00 AM</p> <p>PROJECT NO: 11/17/132(1)</p> <p>CLIENT: MCMC</p> <p>CONTRACTOR: SEGALA DELIMA (M) SDN. BHD.</p> <p>PROJECT TITLE: PROJEK PENYEDIAAN DAN PENYELENGGARAAN POINT OF PRESENCE (POP) FASA 2: HAB INFRASTRUKTUR GENTIAN OPTIK BERHAMPIRAN DENGAN SEKOLAH, KAWASAN PERINDUSTRIAN, PREMIS KERAJAAN DAN KOMUNITI SEKITARNYA OLEH KEMENTERIAN KOMUNIKASI MALAYSIA - ZON UTARA (KKMM.400-11/17/132(1))</p>
<p>APEX COMMUNICATIONS SDN BHD</p> <p>187425-V</p>	<p>SEGALA DELIMA (M) SDN BHD</p> <p>187425-V</p>

