

Ruj. Tuan :
Ruj. Kami : PSC/M&E/2296/24/E-11
Tarikh : 25 Februari 2026

KORIDOR UTILITI DARUL RIDZUAN SDN BHD

B-G-11, Greentown
Suria, Jalan Dato
Seri Ahmad Said,
30450 Ipoh,
Perak Darul Ridzuan

U/P: PEGAWAI KORIDOR NEGERI

Tuan/Puan,

**PERMOHONAN BEKALAN ELEKTRIK TAMBAHAN KE
RUMAH REHAT ADELINER SDN. BHD. DI ATAS LOT 15909, MUKIM TEJA, DAERAH KAMPAR, JALAN
BESAR, KG. GERUNTON, 31600 GOPENG, PERAK DARUL RIDZUAN.**

- **SERAHAN DOKUMEN LENGKAP BAGI PERMOHONAN KELULUSAN IZIN LALU**

Dengan segala hormatnya perkara di atas adalah dirujuk.

2. Bersama-sama ini kami sertakan dokumen-dokumen / lampiran berkaitan untuk rujukan dan kelulusan pihak tuan/puan :-

- i. Borang Kelulusan Izin Lalu (BKIL)
- ii. Lukisan Tapak (Pelan Skematik)
- iii. Peta Penandaan Lokasi
- iv. Gambar Lokasi

3. Mohon pihak Tuan/Puan mengaturkan satu tarikh lawatan tapak bersama bagi menentukan serta meluluskan cadangan laluan yang dinyatakan seperti di atas.

4. Sebarang pertanyaan berhubung perkara ini, pihak Tuan/Puan boleh menghubungi pegawai kami Cik Glorria di talian +60122199634 dan pada emel glorria.sebastian@powerspectra.com.my untuk keterangan lanjut.

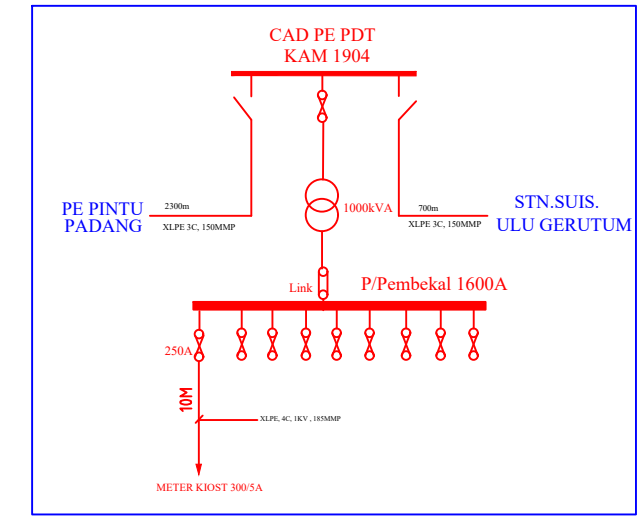
5. Perhatian serta kerjasama pihak Tuan/Puan amat dihargai dan diucapkan terima kasih.

Sekian




Yang Benar,
Power Spectra Consult



Ir. Ng Chee Yee

s.k. Tetuan Rumah Rehat Adeline Sdn Bhd.



PETUNJUK : CADANGAN

	UG CABLE, 11KV, XLPE, AL., 3C, 150MMP
	KABEL B/TANAH XLPE 185MMP, 1KV
	METER KIOST

	
Kawasan : KAMPAR	Daerah : KAMPAR
No. Fail : KAM 1904	
PERMOHONAN CADANGAN BEKALAN ELEKTRIK TAMBAHAN BAGI RUMAH REHAT D ATAS LOT 15906, DI ATAS TANAH 0.6526 HEKTAR, MUKIM TEJA, DAERAH KAMPAR, PERAK DARUL RIDZUAN UNTUK TETUAN RUMAH REHAT ADELINE SDN. BHD.	
Dilukis : SAIFUL	Diluluskan : SYUKRI
Disemak : SYUKRI	Tarikh : 05/08/2025
No. Lukisan : C-2-BEKALAN CPP KAMPAR 2025 KAM 1904 ADELINE	

ALL RIGHTS RESERVED
 LUKISAN DI TEMA ROLAN DIBERANGKAI
 TANPA KESEKUTUAN DARI: SURUTERA
 TENAGA NASIONAL BERHAD



- Legend**
- Distribution Conductors [Electric]
 - UG Cable Segment - (Label = "185_4C_AL_XLPE") and (Network Type = "LV") and (Status = "Proposed Install")
 - UG Cable Segment - (Label = "7X_500_1C_CU_PVC/PVC") and (Network Type = "LV") and (Status = "Proposed Install")
 - UG Cable Segment LV Route - 400/000 V LV LINE, Existing
 - UG Cable Segment - (Label = "70_1C_AL_XLPE") and (Status = "Proposed Install") and (Network Type = "MV")
 - UG Cable Segment - (Label = "150_3C_AL_XLPE") and (Status = "Proposed Install") and (Network Type = "MV")
 - UG Cable Segment MV Route - 11,000 V, Existing
 - Connector Segment Installation MV Route - Busbar, Existing
 - Connector Segment Installation MV Route - Busbar, Proposed Install
 - Distribution Transformers [Electric]
 - Transformer Installation LV Secondary Location - Distribution Transformer, Existing
 - Transformer Installation LV Secondary Location - Distribution Transformer, Proposed Install
 - Transformer Installation MV Annotation - 1
 - Transformer Installation MV Location - Distribution Transformer, Existing
 - Transformer Installation MV Location - Distribution Transformer, Proposed Install
 - Transformer Installation MV Primary Location - Distribution Transformer, Existing
 - Transformer Installation MV Primary Location - Distribution Transformer, Proposed Install
 - Distribution Devices [Electric]
 - Isolating Equipment Installation MV Annotation - 4
 - Isolating Equipment Installation MV Annotation - 7
 - Isolating Equipment Installation MV Connector
 - Isolating Equipment Installation MV Pin1 - Fuse, Existing, Closed
 - Isolating Equipment Installation MV Pin1 - Fuse, Proposed Install, Closed
 - Isolating Equipment Installation MV Pin1 - Switch Bank, LINK, Existing, Closed
 - Isolating Equipment Installation MV Pin1 - Switch Bank, LINK, Proposed Install, Closed
 - Protective Equipment Installation MV Location - Fault Indicator, 0,000 V, Existing
 - Protective Equipment Installation MV Location - Fault Indicator, 0,000 V, Proposed Install
 - Distribution Structures [Electric]
 - Ring Main Unit Existing Location - Non-Extendible
 - Ring Main Unit Proposed Location - Non-Extendible
 - Cabinet Existing Location - LVDB
 - Cabinet - (Design = "LVDB 1600 A - 2 in 10 out (CS)") and (Status = "Proposed Install")
 - Distribution Network [Electric]
 - Demand Point LV Location - 17
 - Substation Existing Location - 1
 - Substation Proposed Location - 1
 - Substation Existing Annotation - 1
 - Common [Electric]
 - Network Hypermode LV Pin2 - 1
 - Network Hypermode LV Pin2 - 2
 - Network Hypermode LV Pin2 - 3
 - Network Hypermode MV Pin1 - 5
 - Network Hypermode MV Pin1 - 8
 - Network Hypermode MV Pin2 - 5
 - Network Hypermode MV Pin2 - 8
 - Network Hypermode Pin2 Annotation
 - Network Hypermode Feeder Direction Annotation
 - Property Features [Jupem, land]
 - JUPEM Land parcel Annotation
 - Annotations [Jupem, land]
 - OSM Road Annotation Annotation

Coordinate System: WGS84UTM47N (mm)

Trail Coordinate: 101.2 , 4.453



D-KAM-C25-1904

BEKALAN ELEKTRIK TAMBAHAN BAGI CADANGAN RUMAH REHAT DI ATAS LOT 15906, DI ATAS TANAH 0.6526 HEKTAR, MUKIM TEJA, DAERAH KAMPAR, PERAK DARUL RIDZUAN UNTUK TETUAN RUMAH REHAT ADELINE SDN. BHD.

DOCUMENT CONTROL	
Mapped by	10081360
Date	05/08/2025
Checked by	SAIFULL BAHRI BIN MUERKAN
Approved by	MOHD SYUKRI HAKIMI BIN SHAFIE

This is a computer generated document, hence signature is not required