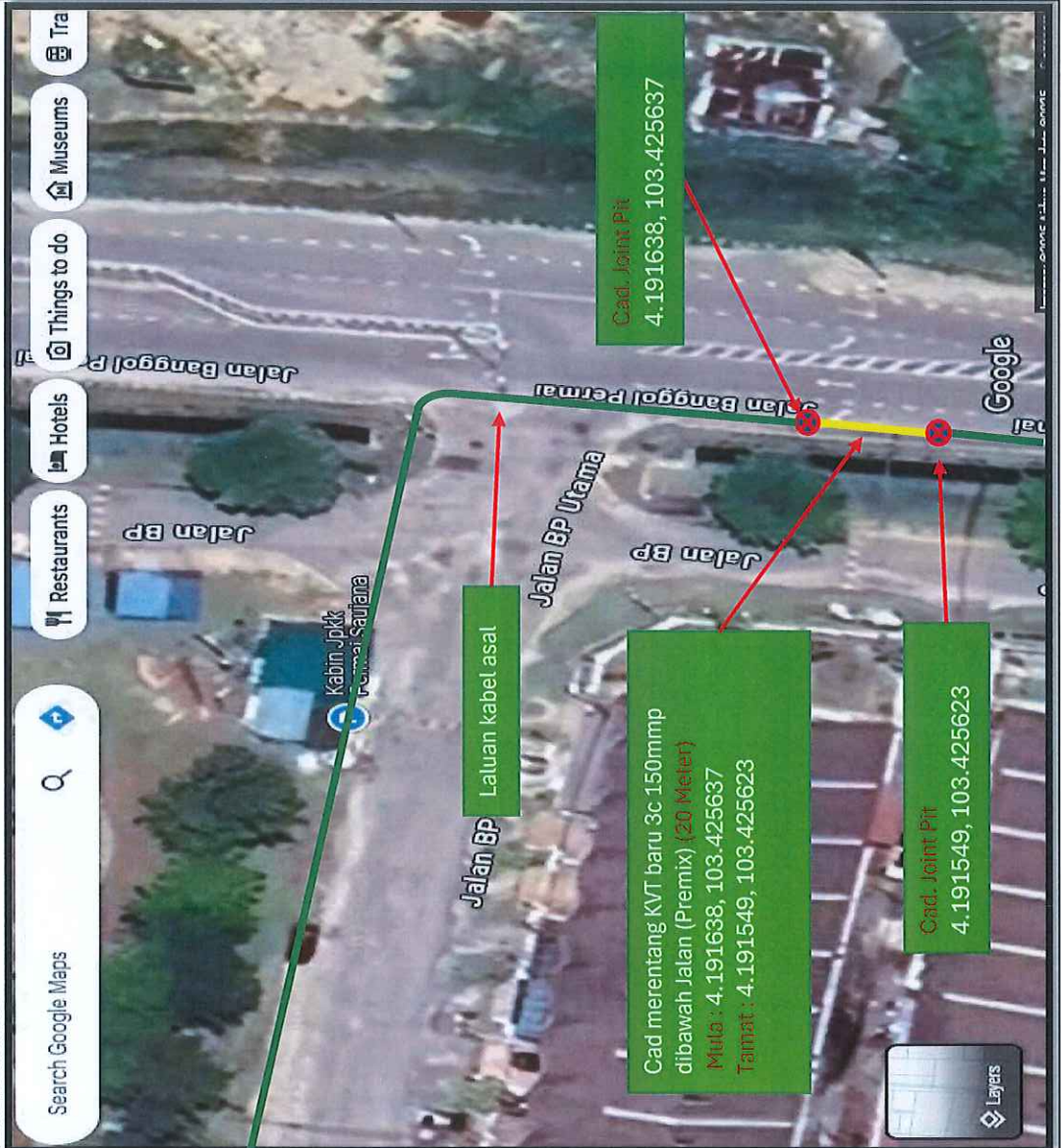


PELAN TAPAK



<p>LEGEND :</p> <ul style="list-style-type: none"> Laluan Kabel Asal Cad. Merentang KVT baru 3c 150mmp (Open cut) Cad. Joint Pit 	
<p>TNB DISTRIBUTION (38695-A)</p>	
<p>DRAWN BY :</p>	<p>AHMAD FAJRUDIN BIN WAHAB No. Pekerja : 10095235 Juruteknik T/Biasa DN / SBU Maintenance - East Kemaman / Kerteh Tenaga Nasional Berhad</p>
<p>CHECKED BY :</p>	<p>ZAMANI BIN TENGAH No. Pekerja : 10081374 Juruteknik Tingkatan Kanan SBUJ Kem / Kte Tenaga Nasional Berhad</p>
<p>APPROVED BY :</p>	
<p>TITLE :</p> <p>PEMBAIKAN PD MAPPING KABEL 11KV DIANTARA PE TAMAN BANGGOL PERMAI 2 KE PE PBR PAYA BERENJUT SUBZONE T3 KEMAMAN FY 2025</p>	
<p>SCALE : nts</p>	

PELAN LOKASI



Laluan kabel asal

Cad. Joint Pit
4.191638, 103.425637

Cad. Joint Pit
4.191549, 103.425623

Cad merentang KVT baru 3c 150mm
dibawah Jalan (Premix) (20Meter)
Mula: 4.191638, 103.425637
Tamat: 4.191549, 103.425623

Laluan kabel asal

Google

Cadangan merentang KVT baru 3x150mm, Tar (Premix)(20 Meter)