

# Technical Proposal for TM Project

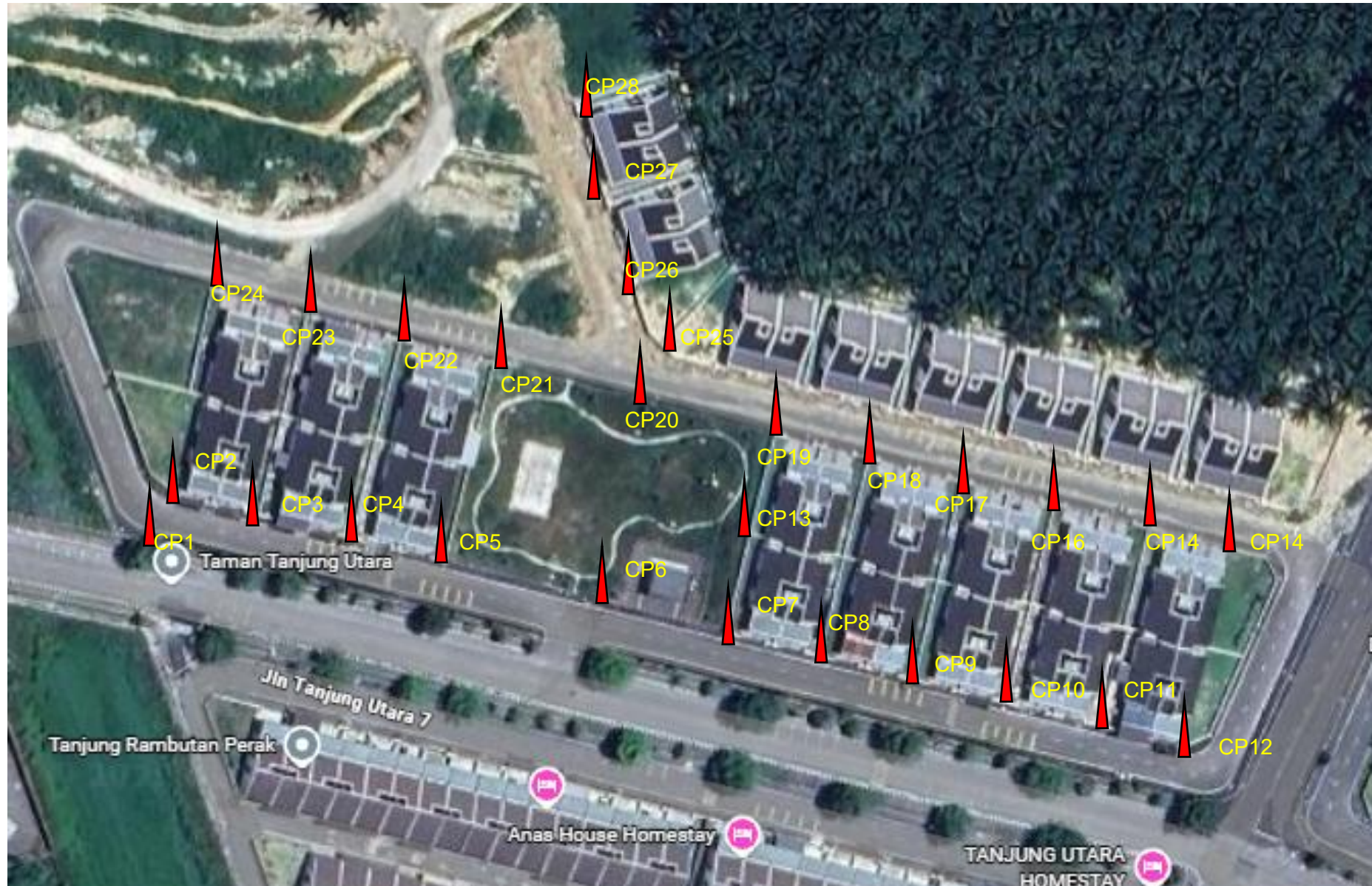
SYARIKAT OSMANIA LOGISTICS SDN BHD  
(7338-T)



<b>Project Description:</b>	SRR FTTH TJR_C022 JALAN TANJUNG UTARA 14 &15 (TAMAN TANJUNG UTARA)
<b>Project Number:</b>	TMNA/252770
<b>TM Node</b>	TJR (TANJUNG RAMBUTAN)
<b>Region</b>	Northern
<b>NE ID</b>	TJR C022
<b>Total FTTH Ports</b>	32
<b>Total Property</b>	48
<b>PF (%)</b>	67%
<b>RFSI Date</b>	28 JUN 2026
<b>GPS Coordinate</b>	4 673393 101 165288

<b>Prepared by:</b>	RIDZUAN
<b>Company Name:</b>	SYARIKAT OSMANIA LOGISTICS SDN. BHD.
<b>Date:</b>	1/1/2026
<b>TP Revision:</b>	1

### 3.1 New Pole Plan



Legend:



FDC



FDP



FOSC



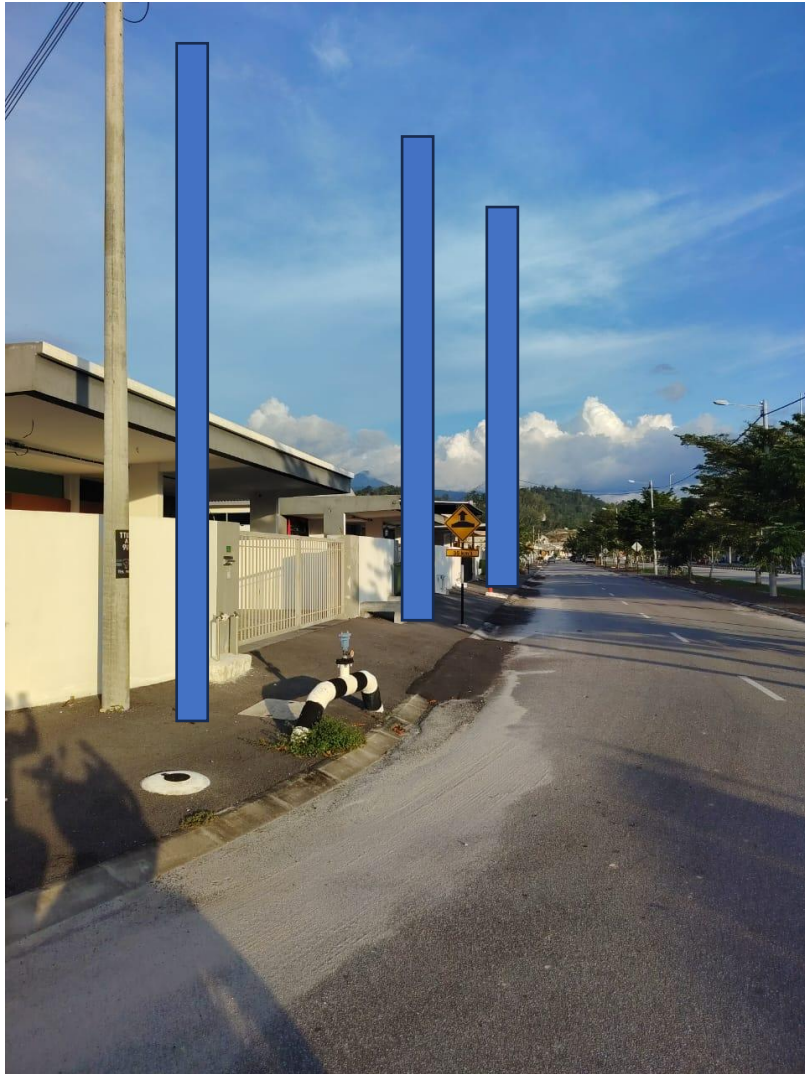
POLE

## 3.2 New Pole details

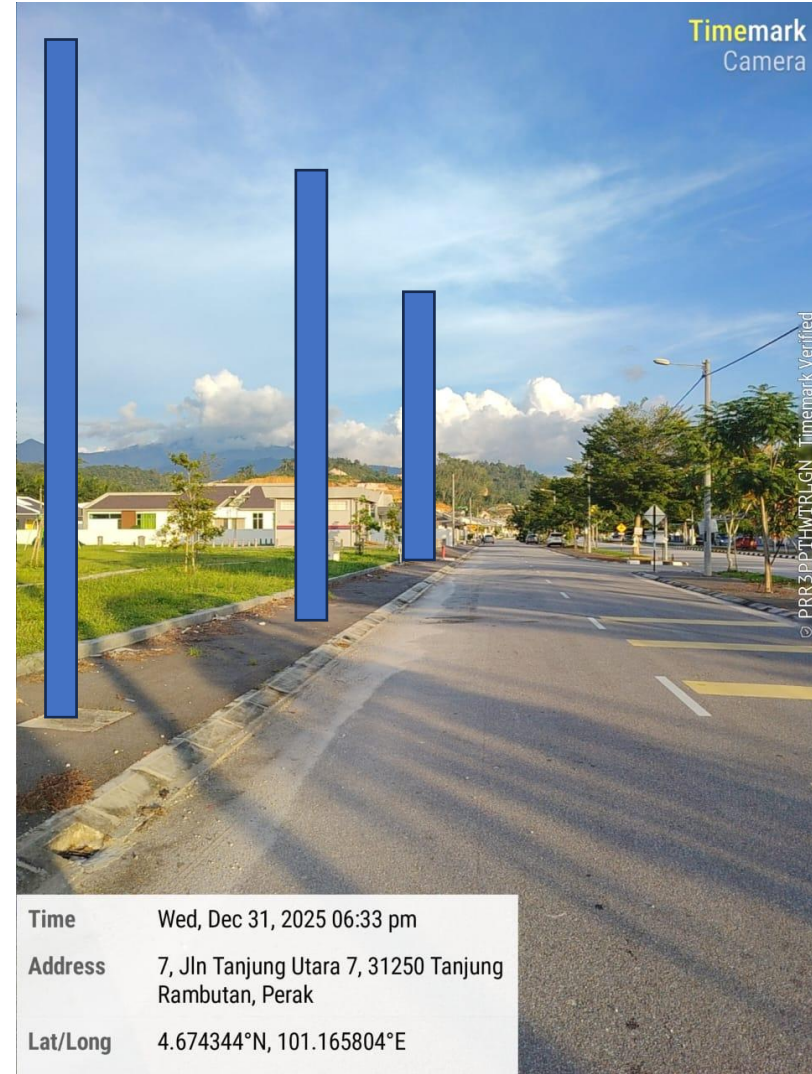
No	POLE ID	Pole Type	GPS Coordinate
1	CP1	CONCRETE POLE 7.5M	4.674517°N 101.165240°E
2	CP2	CONCRETE POLE 7.5M	4.674466°N 101.165421°E
3	CP3	CONCRETE POLE 7.5M	4.674415°N 101.165623°E
4	CP4	CONCRETE POLE 7.5M	4.674367°N 101.165834°E
5	CP5	CONCRETE POLE 7.5M	4.674316°N 101.166061°E
6	CP6	CONCRETE POLE 7.5M	4.674275°N 101.166220°E
7	CP7	CONCRETE POLE 7.5M	4.674214°N 101.166437°E
8	CP8	CONCRETE POLE 7.5M	4.674162°N 101.166640°E
9	CP9	CONCRETE POLE 7.5M	4.674112°N 101.166843°E
10	CP10	CONCRETE POLE 7.5M	4.674062°N 101.167044°E
11	CP11	CONCRETE POLE 7.5M	4.674013°N 101.167248°E
12	CP12	CONCRETE POLE 7.5M	4.673964°N 101.167439°E
13	CP13	CONCRETE POLE 7.5M	4.673995°N 101.167496°E
14	CP14	CONCRETE POLE 7.5M	4.674164°N 101.167569°E
15	CP15	CONCRETE POLE 7.5M	4.674331°N 101.167644°E
16	CP16	CONCRETE POLE 7.5M	4.674391°N 101.167620°E
17	CP17	CONCRETE POLE 7.5M	4.674410°N 101.167539°E
18	CP18	CONCRETE POLE 7.5M	4.674455°N 101.167357°E



### 3.3 New Pole Illustration



Pole 2-4



Pole 5-11

### 3.3 New Pole Illustration



Pole 15-23



Time Wed, Dec 31, 2025 06:31 pm  
Address 1, Jln Tanjung Utara 7, 31250 Tanjung Rambutan, Perak  
Lat/Long 4.675022°N, 101.165313°E

Pole 24-27

## 5.1 Fiber/Civil Accessories

