

# TECHNICAL PROPOSAL

## POP2 AEAB005 SEKOLAH MENENGAH KEBANGSAAN RUNGKUP (D-SIDE)

**Company Name** : KNZ ENGINEERING SDN BHD.  
**Company Address** : NO 60 & 60 A JALAN KLEBANG INDAH 1 MEDAN KLEBANG INDAH 30010 IPOH PERAK  
**Prepared By** : FARHAH AFIQAH BINTI AMDON  
**Date** : 28/11/2024



### Starting Point

**Site / Boundary Name** : Selekoh  
**Address** : SMK Rungkup, 36200 Selekoh  
**District** : Hilir Perak  
**Postcode** : 36200  
**State** : Perak  
**GPS Coordinate** : 3.948593466, 100.7196426  
**LRD** : A

### End Point

**Site / Boundary Name** : Selekoh  
**Address** : Jalan Sungai Lancang – Bagan Datuk, 36200 Selekoh  
**District** : Hilir Perak  
**Postcode** : 36200  
**State** : Perak  
**GPS Coordinate** : 3.93015529, 100.7157112  
**LRD** : B



PROJEK PENYEDIAAN DAN PENYELENGGARAAN POINT OF PRESENCE (POP) FASA 2: HAB INFRASTRUKTUR GENTIAN OPTIK BERHAMPIRAN DENGAN SEKOLAH, KAWASAN PERINDUSTRIAN, PREMIS KERAJAAN DAN KOMUNITI SEKITARNYA OLEH KEMENTERIAN KOMUNIKASI MALAYSIA – ZON UTARA (KKMM.400-11/17/132(1))



## 1.0 WORK SUMMARY

NO	PROPOSED DISTANCE AND METHOD	UNIT	QUANTITY
1	Horizontal Directional Drilling (HDD)	m	0
2	Carriage Way Open Trench (CW)	m	0
3	Grass Verge Open Trenching (GV)	m	0
4	Micro Trenching (MT)	m	0
Total			0

NO	OTHER INFORMATION	UNIT	QUANTITY
1	Installation of Short Span ADSS Fibre Cables	m	9,300m
2	Install New Pole	ea	208
3	Install New JRC7 Manhole	ea	0
4	Install GI Riser 100mm	ea	0
5	Install Fiber Distribution Point	ea	13
6	Install Closure	ea	3
7	Estimated Time Required for Completion	days	30

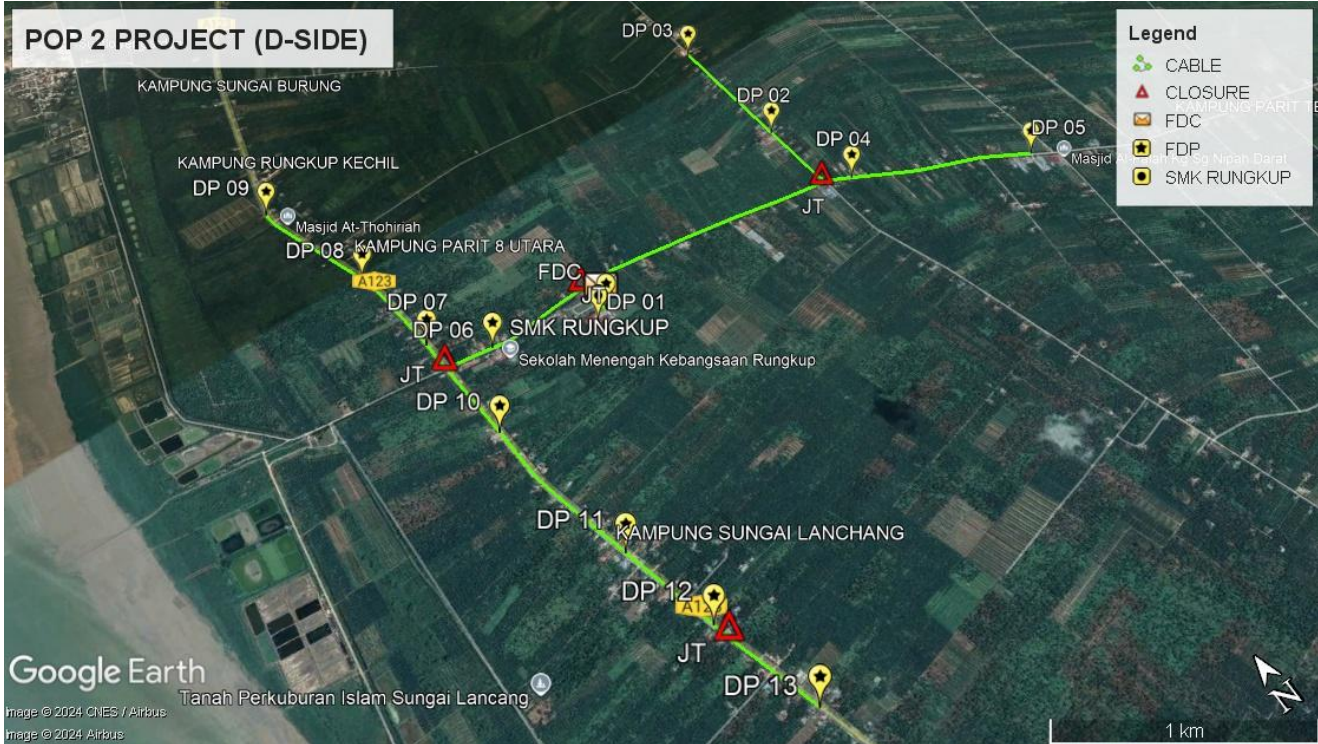
## 2.0 LOCAL AUTHORITY SUMMARY

### Daerah Hilir Perak

Bil	Items	Owner	Quantity	Distance
1	HDD	JKR	-	-
		Majlis	-	-
		Estate / Private Land	-	-
2	New Pole	JKR	91	3,545m
		Majlis	117	4,532m
		Estate / Private Land	-	-
3	Existing TNB Pole	JKR	-	-
		Majlis	-	-
		Estate / Private Land	-	-
Total				8,077m

Site Plan -KMZ (Overview site area)

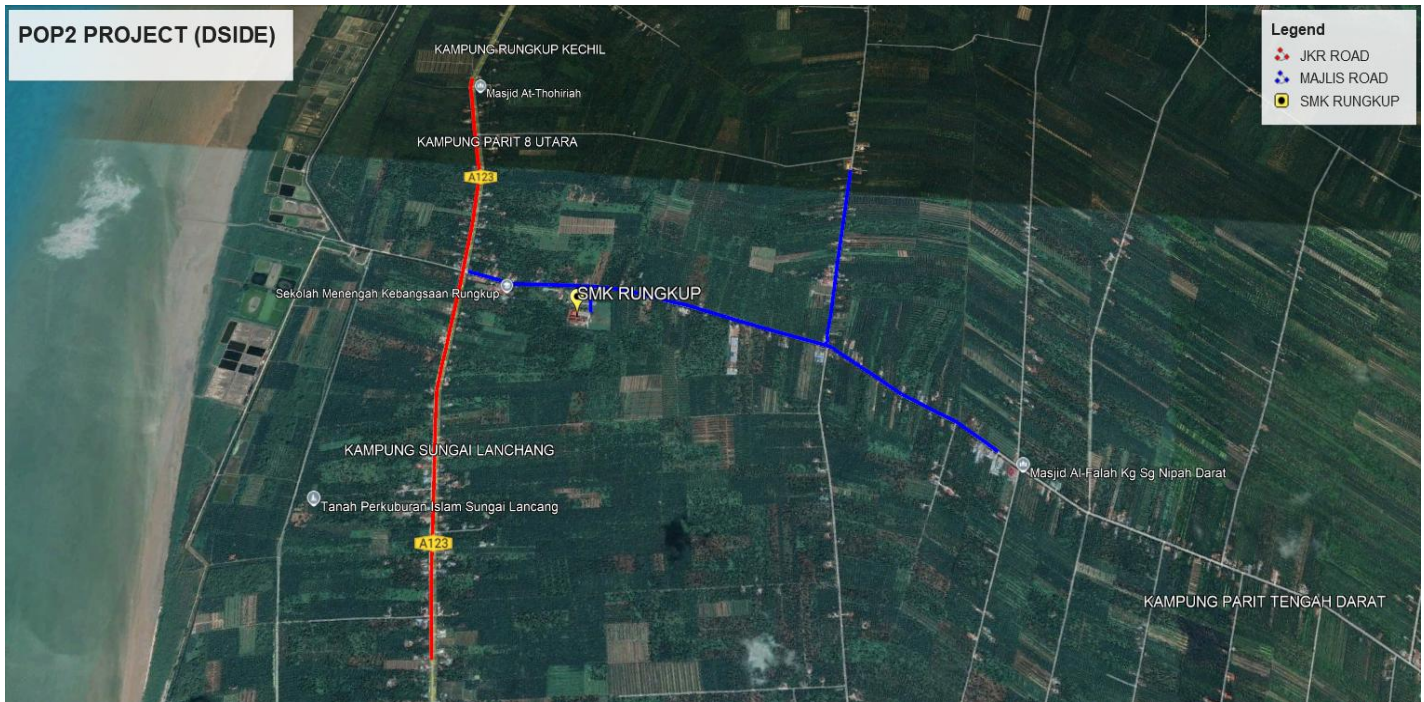
Proposed FDP and Closure



Proposed New Pole



**Site Plan - KMZ Routing (All Local Authority)**

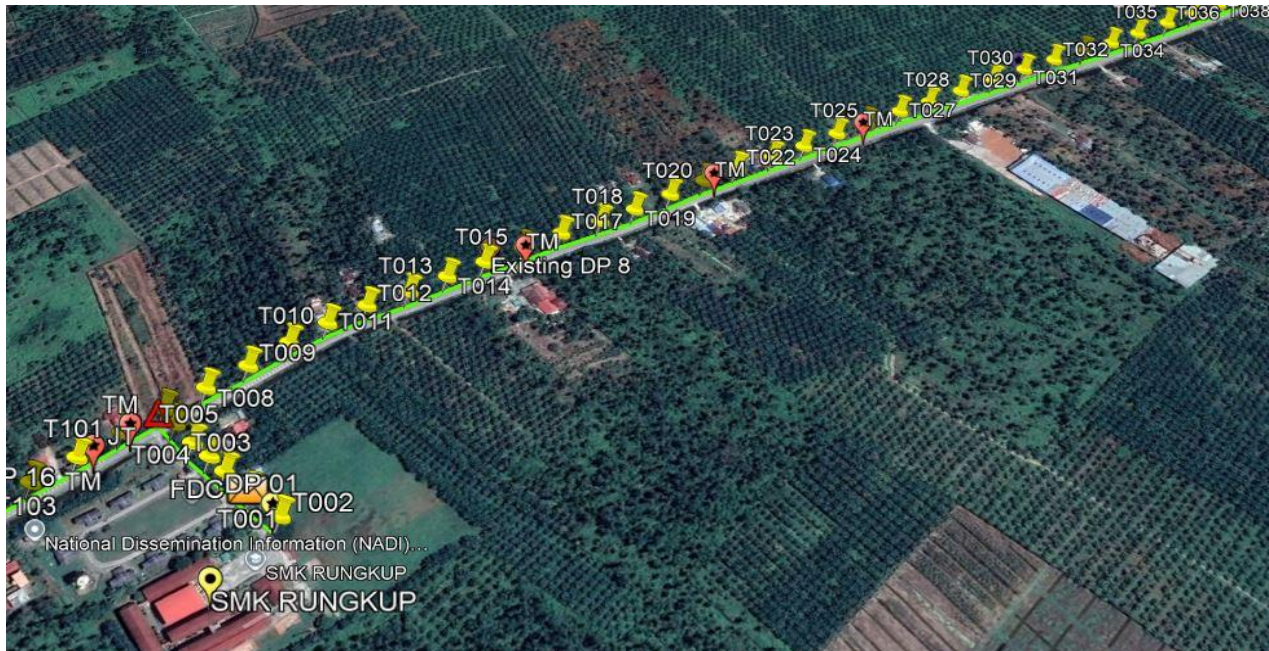
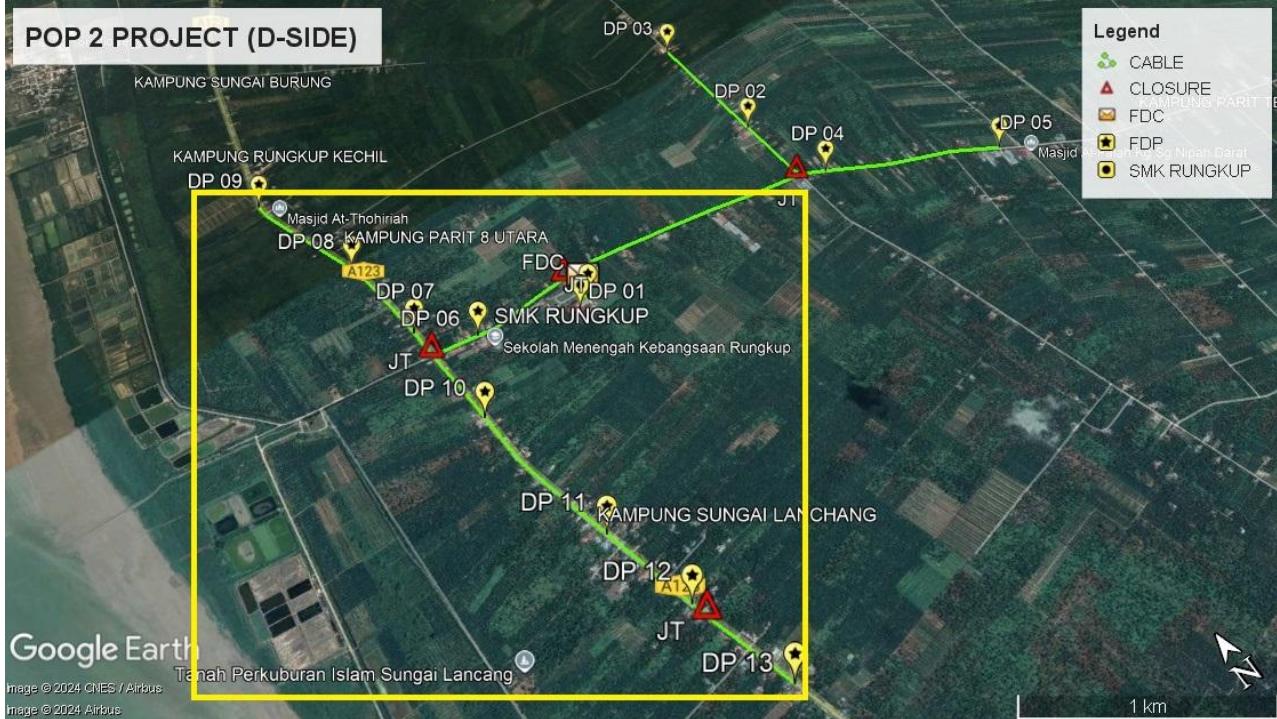


**Red Colour – JKR Road**

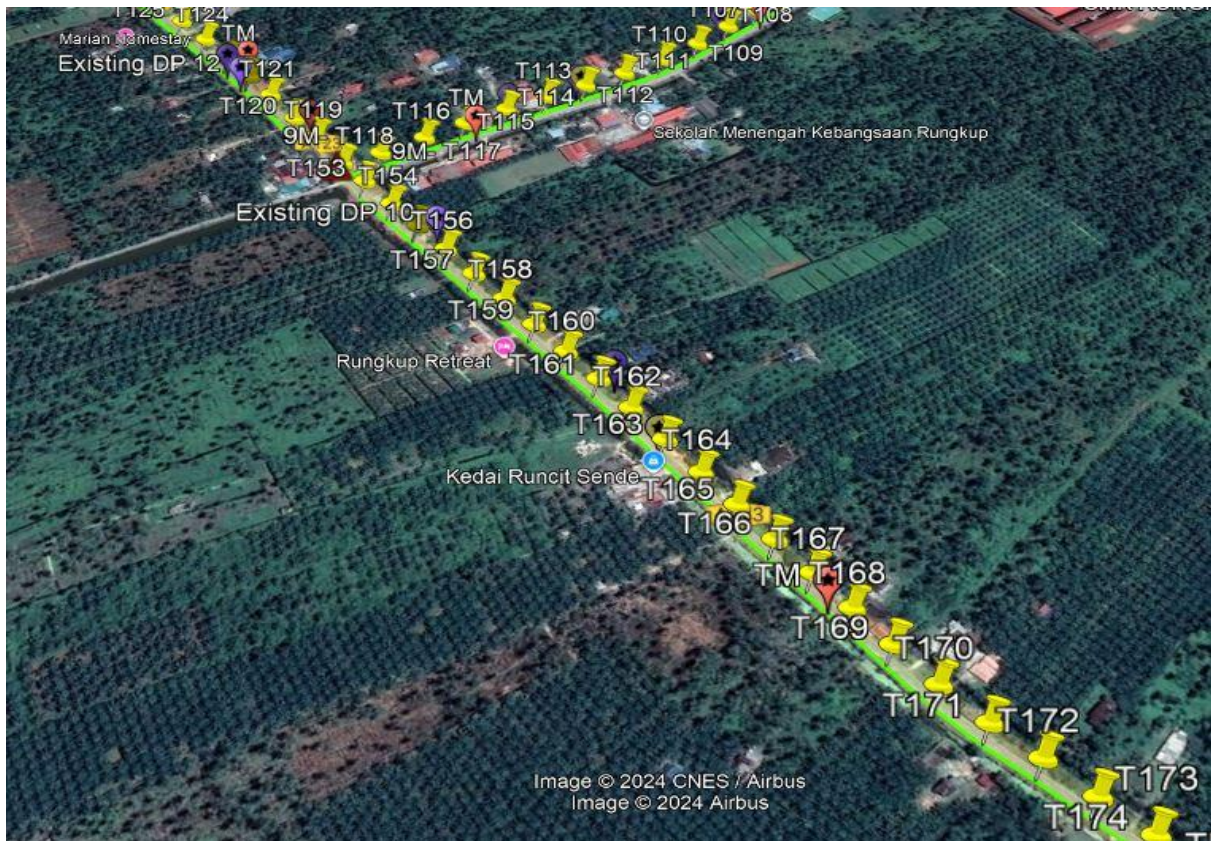
**Blue Colour - Majlis Road**

Site Plan – KMZ Routing (All site area)

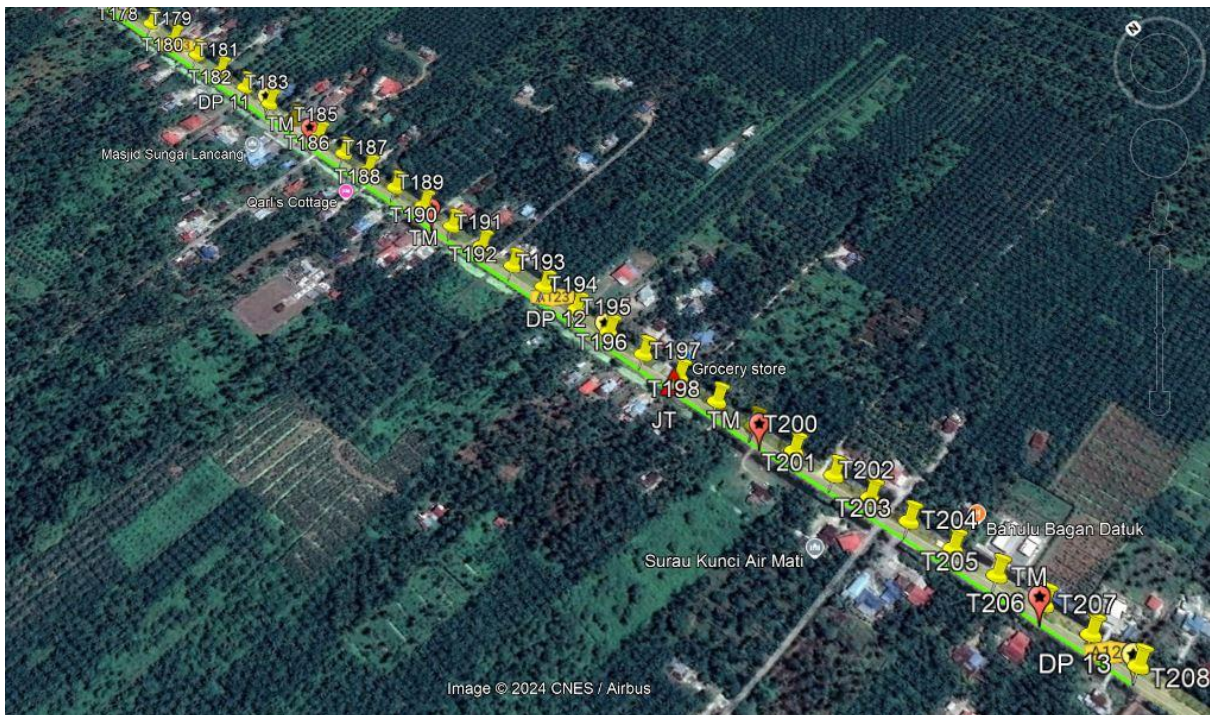
Route 1



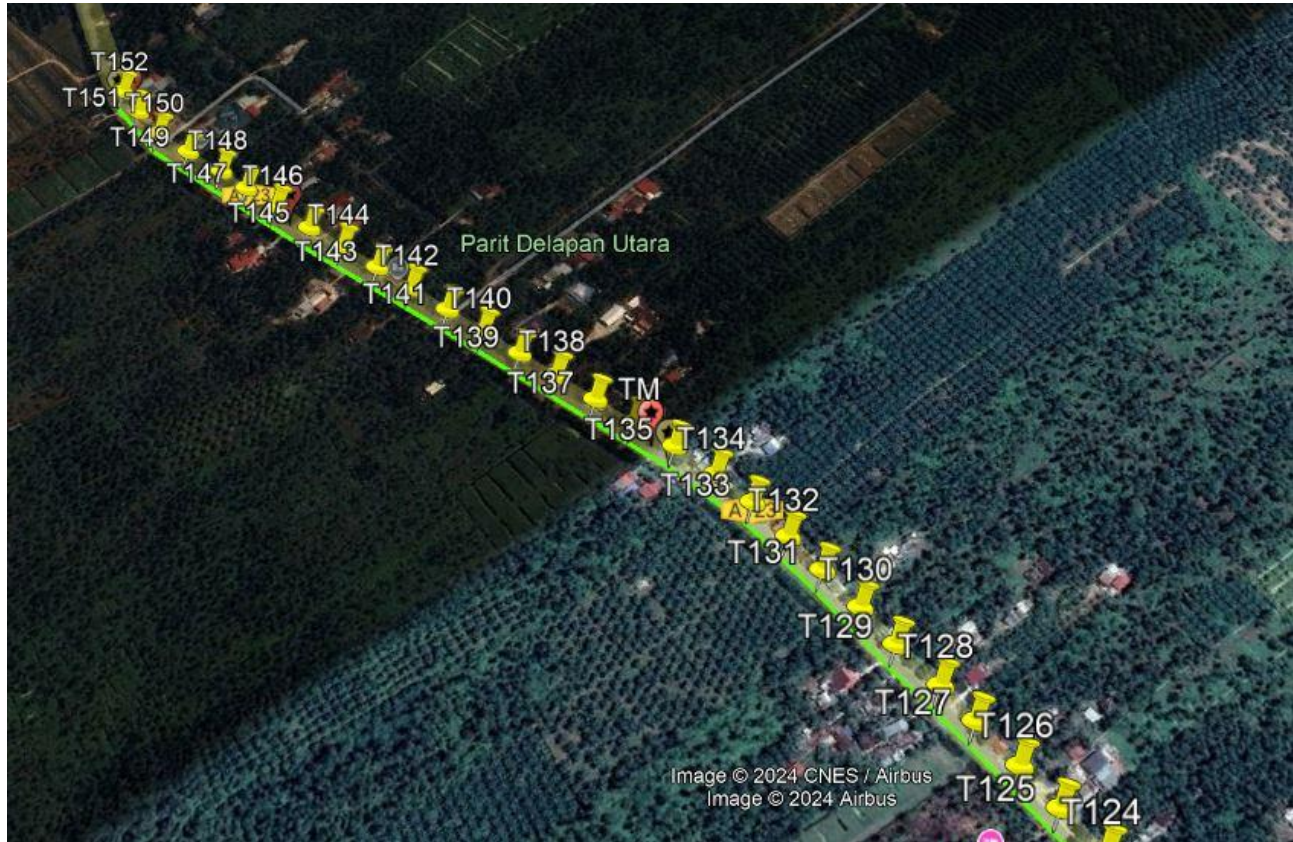
Route 1.1



**Route 1.2**

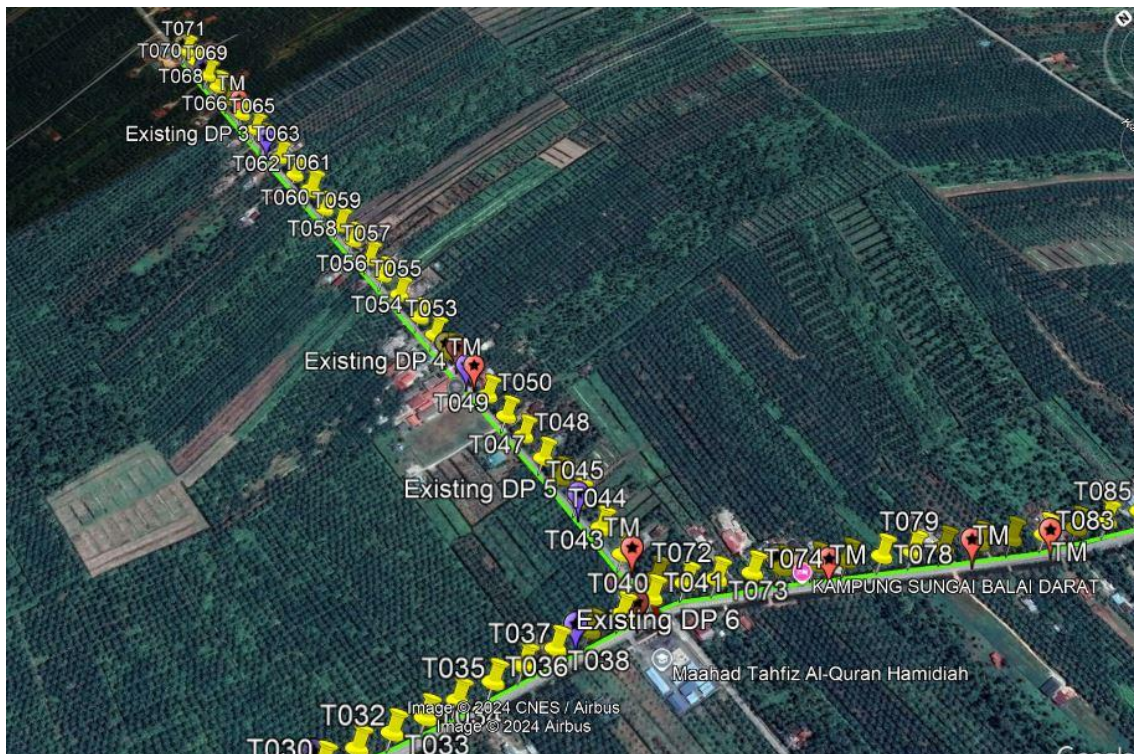
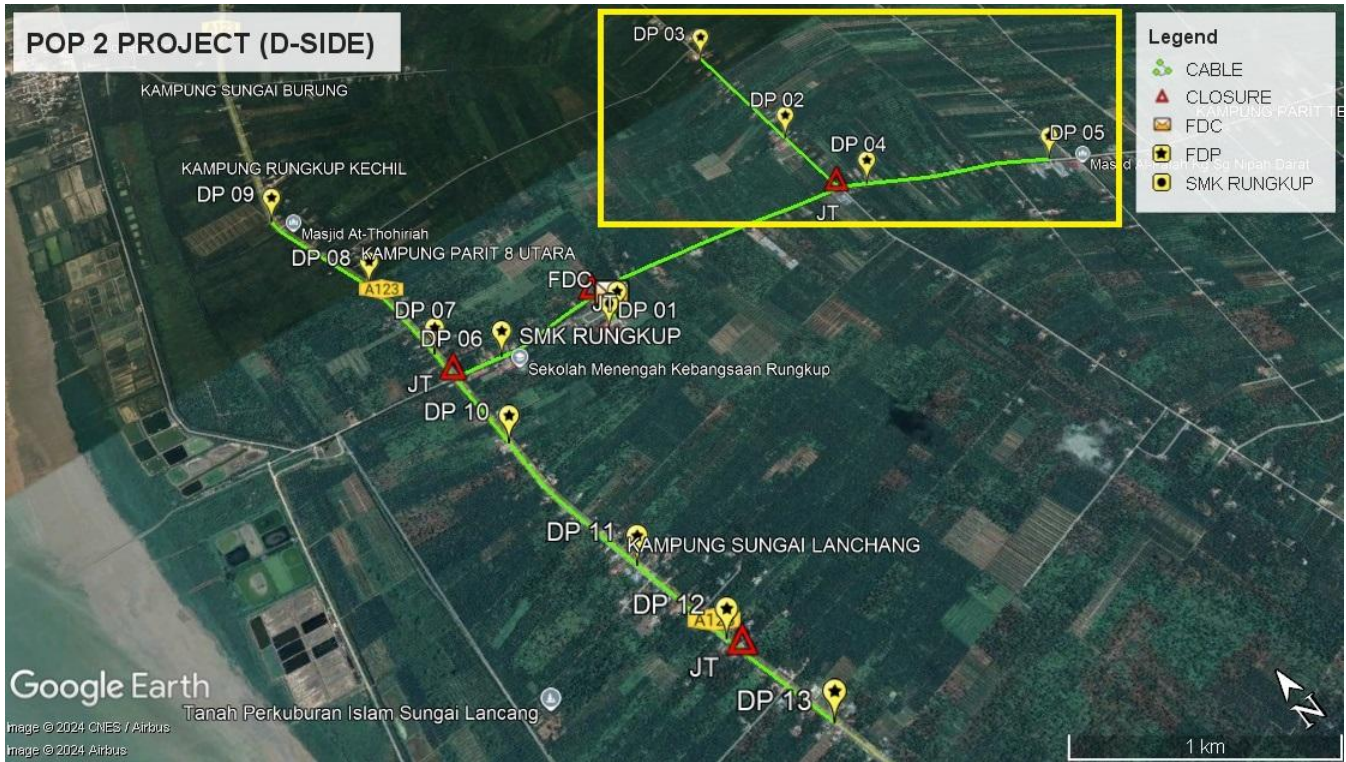


**Route 1.3**

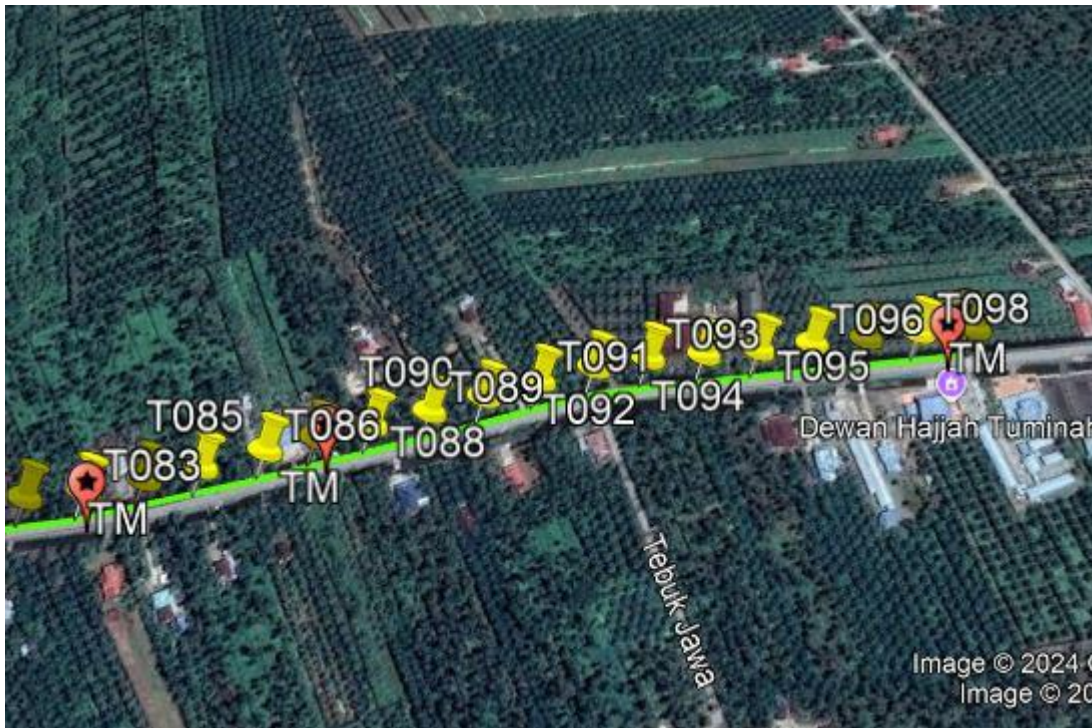


Route 1.4

**Route 2**



**Route 2.1**



Route 2.2

### 3.0 PROPOSED NEW POLE

Proposed New Pole Coordinate					
No.	Pole Number	Distance (m)	Latitude	Longitude	Local Authority
1	T001	40	3.948593	100.7196426	Majlis Perbandaran Teluk Intan
2	T002	40	3.948263	100.7197144	Majlis Perbandaran Teluk Intan
3	T003	40	3.948897	100.7195705	Majlis Perbandaran Teluk Intan
4	T004	40	3.949101	100.7195408	Majlis Perbandaran Teluk Intan
5	T005	40	3.949301	100.7194924	Majlis Perbandaran Teluk Intan
6	9M- T006	40	3.949555	100.7194632	Majlis Perbandaran Teluk Intan
7	9M- T007	40	3.949741	100.7194542	Majlis Perbandaran Teluk Intan
8	T008	40	3.949749	100.7198089	Majlis Perbandaran Teluk Intan
9	T009	40	3.949751	100.720176	Majlis Perbandaran Teluk Intan
10	T010	40	3.949764	100.7205505	Majlis Perbandaran Teluk Intan
11	T011	40	3.949766	100.7208996	Majlis Perbandaran Teluk Intan
12	T012	40	3.949753	100.7212543	Majlis Perbandaran Teluk Intan
13	T013	40	3.949695	100.7216167	Majlis Perbandaran Teluk Intan
14	T014	40	3.949658	100.7219691	Majlis Perbandaran Teluk Intan
15	T015	40	3.94962	100.7223178	Majlis Perbandaran Teluk Intan
16	T016	40	3.949572	100.7226792	Majlis Perbandaran Teluk Intan
17	T017	40	3.949529	100.7230494	Majlis Perbandaran Teluk Intan
18	T018	40	3.94947	100.7234255	Majlis Perbandaran Teluk Intan
19	T019	40	3.949421	100.7237672	Majlis Perbandaran Teluk Intan
20	T020	40	3.949378	100.7241347	Majlis Perbandaran Teluk Intan
21	T021	40	3.949331	100.7244837	Majlis Perbandaran Teluk Intan
22	T022	40	3.949286	100.724831	Majlis Perbandaran Teluk Intan
23	T023	40	3.94922	100.7252045	Majlis Perbandaran Teluk Intan
24	T024	40	3.94916	100.7255411	Majlis Perbandaran Teluk Intan
25	T025	40	3.949112	100.7259109	Majlis Perbandaran Teluk Intan
26	T026	40	3.949055	100.7262432	Majlis Perbandaran Teluk Intan

### 3.0 PROPOSED NEW POLE

Proposed New Pole Coordinate					
No.	Pole Number	Distance (m)	Latitude	Longitude	Local Authority
27	T027	40	3.948996	100.7266174	Majlis Perbandaran Teluk Intan
28	T028	40	3.948941	100.7269573	Majlis Perbandaran Teluk Intan
29	T029	40	3.948876	100.7273251	Majlis Perbandaran Teluk Intan
30	T030	40	3.948811	100.7277063	Majlis Perbandaran Teluk Intan
31	T031	40	3.948741	100.7280758	Majlis Perbandaran Teluk Intan
32	T032	40	3.948671	100.7284339	Majlis Perbandaran Teluk Intan
33	T033	40	3.948595	100.7287903	Majlis Perbandaran Teluk Intan
34	T034	40	3.948522	100.7291299	Majlis Perbandaran Teluk Intan
35	T035	40	3.948471	100.7294773	Majlis Perbandaran Teluk Intan
36	T036	40	3.94841	100.7298689	Majlis Perbandaran Teluk Intan
37	T037	40	3.948363	100.7302135	Majlis Perbandaran Teluk Intan
38	T038	40	3.948303	100.7305753	Majlis Perbandaran Teluk Intan
39	T039	40	3.948245	100.7309652	Majlis Perbandaran Teluk Intan
40	T040	40	3.94818	100.7313401	Majlis Perbandaran Teluk Intan
41	T041	40	3.948137	100.7317126	Majlis Perbandaran Teluk Intan
42	T042	40	3.948274	100.7318876	Majlis Perbandaran Teluk Intan
43	T043	40	3.948696	100.7317954	Majlis Perbandaran Teluk Intan
44	T044	40	3.949072	100.7318172	Majlis Perbandaran Teluk Intan
45	T045	40	3.949483	100.7318386	Majlis Perbandaran Teluk Intan
46	T046	40	3.949822	100.7318551	Majlis Perbandaran Teluk Intan
47	T047	40	3.950131	100.7318658	Majlis Perbandaran Teluk Intan
48	T048	40	3.950501	100.7318772	Majlis Perbandaran Teluk Intan
49	T049	40	3.950836	100.7318889	Majlis Perbandaran Teluk Intan
50	T050	40	3.951199	100.7318956	Majlis Perbandaran Teluk Intan
51	T051	40	3.951562	100.7319017	Majlis Perbandaran Teluk Intan
52	T052	40	3.951951	100.7319074	Majlis Perbandaran Teluk Intan
53	T053	40	3.95228	100.7319188	Majlis Perbandaran Teluk Intan

### 3.0 PROPOSED NEW POLE

Proposed New Pole Coordinate					
No.	Pole Number	Distance (m)	Latitude	Longitude	Local Authority
54	T054	40	3.952604	100.7319281	Majlis Perbandaran Teluk Intan
55	T055	40	3.953023	100.7319251	Majlis Perbandaran Teluk Intan
56	T056	40	3.953383	100.7319322	Majlis Perbandaran Teluk Intan
57	T057	40	3.953707	100.7319429	Majlis Perbandaran Teluk Intan
58	T058	40	3.954088	100.7319509	Majlis Perbandaran Teluk Intan
59	T059	40	3.954415	100.7319637	Majlis Perbandaran Teluk Intan
60	T060	40	3.954778	100.7319687	Majlis Perbandaran Teluk Intan
61	T061	40	3.955139	100.7319731	Majlis Perbandaran Teluk Intan
62	T062	40	3.955529	100.7319885	Majlis Perbandaran Teluk Intan
63	T063	40	3.955932	100.7319932	Majlis Perbandaran Teluk Intan
64	T064	40	3.956341	100.7320012	Majlis Perbandaran Teluk Intan
65	T065	40	3.956584	100.7320079	Majlis Perbandaran Teluk Intan
66	T066	40	3.956942	100.732016	Majlis Perbandaran Teluk Intan
67	T067	40	3.957294	100.732022	Majlis Perbandaran Teluk Intan
68	T068	40	3.957621	100.7320264	Majlis Perbandaran Teluk Intan
69	T069	40	3.957896	100.7320307	Majlis Perbandaran Teluk Intan
70	T070	40	3.958257	100.7320384	Majlis Perbandaran Teluk Intan
71	T071	40	3.958536	100.7320468	Majlis Perbandaran Teluk Intan
72	T072	40	3.948047	100.7320968	Majlis Perbandaran Teluk Intan
73	T073	40	3.947887	100.7323915	Majlis Perbandaran Teluk Intan
74	T074	40	3.947708	100.7327281	Majlis Perbandaran Teluk Intan
75	T075	40	3.94756	100.7330064	Majlis Perbandaran Teluk Intan
76	T076	40	3.947377	100.7333192	Majlis Perbandaran Teluk Intan
77	T077	40	3.947209	100.7336102	Majlis Perbandaran Teluk Intan
78	T078	40	3.947018	100.7339378	Majlis Perbandaran Teluk Intan
79	T079	40	3.946853	100.7342342	Majlis Perbandaran Teluk Intan
80	T080	40	3.946685	100.7345269	Majlis Perbandaran Teluk Intan
81	T081	40	3.946496	100.7348678	Majlis Perbandaran Teluk Intan
82	T082	40	3.94632	100.7351786	Majlis Perbandaran Teluk Intan
83	T083	40	3.946138	100.7354972	Majlis Perbandaran Teluk Intan
84	T084	40	3.945984	100.7358318	Majlis Perbandaran Teluk Intan

### 3.0 PROPOSED NEW POLE

Proposed New Pole Coordinate					
No.	Pole Number	Distance (m)	Latitude	Longitude	Local Authority
85	T085	40	3.945839	100.7361543	Majlis Perbandaran Teluk Intan
86	T086	40	3.945693	100.7365322	Majlis Perbandaran Teluk Intan
87	T087	40	3.945576	100.7368332	Majlis Perbandaran Teluk Intan
88	T088	40	3.945448	100.7371551	Majlis Perbandaran Teluk Intan
89	T089	40	3.945314	100.7375008	Majlis Perbandaran Teluk Intan
90	T090	40	3.945192	100.7378354	Majlis Perbandaran Teluk Intan
91	T091	40	3.945069	100.7381777	Majlis Perbandaran Teluk Intan
92	T092	40	3.94494	100.7385177	Majlis Perbandaran Teluk Intan
93	T093	40	3.944783	100.7388368	Majlis Perbandaran Teluk Intan
94	T094	40	3.944592	100.7391497	Majlis Perbandaran Teluk Intan
95	T095	40	3.944405	100.7394588	Majlis Perbandaran Teluk Intan
96	T096	40	3.944224	100.7397692	Majlis Perbandaran Teluk Intan
97	T097	40	3.944034	100.7400774	Majlis Perbandaran Teluk Intan
98	T098	40	3.943856	100.7403825	Majlis Perbandaran Teluk Intan
99	T099	40	3.94365	100.7406976	Majlis Perbandaran Teluk Intan
100	T100	40	3.949722	100.7191035	Majlis Perbandaran Teluk Intan
101	T101	40	3.9497	100.7187337	Majlis Perbandaran Teluk Intan
102	T102	40	3.949661	100.7183733	Majlis Perbandaran Teluk Intan
103	T103	40	3.94963	100.7180128	Majlis Perbandaran Teluk Intan
104	T104	40	3.949586	100.7176461	Majlis Perbandaran Teluk Intan
105	T105	40	3.949544	100.7173007	Majlis Perbandaran Teluk Intan
106	T106	40	3.949492	100.7169333	Majlis Perbandaran Teluk Intan
107	T107	40	3.949444	100.7165822	Majlis Perbandaran Teluk Intan
108	T108	40	3.9494	100.7162282	Majlis Perbandaran Teluk Intan
109	T109	40	3.949352	100.7158654	Majlis Perbandaran Teluk Intan
110	T110	40	3.94935	100.7154983	Majlis Perbandaran Teluk Intan
111	T111	40	3.949391	100.7151348	Majlis Perbandaran Teluk Intan

### 3.0 PROPOSED NEW POLE

Proposed New Pole Coordinate					
No.	Pole Number	Distance (m)	Latitude	Longitude	Local Authority
112	T112	40	3.949438	100.7147828	Majlis Perbandaran Teluk Intan
113	T113	40	3.949492	100.7144368	Majlis Perbandaran Teluk Intan
114	T114	40	3.949539	100.7140794	Majlis Perbandaran Teluk Intan
115	T115	40	3.949587	100.7137216	Majlis Perbandaran Teluk Intan
116	T116	40	3.949638	100.7133773	Majlis Perbandaran Teluk Intan
117	9M- T117	40	3.949699	100.7130122	Majlis Perbandaran Teluk Intan
118	9M- T118	40	3.949772	100.7127145	JKR Hilir Perak
119	T119	40	3.950179	100.7127222	JKR Hilir Perak
120	T120	40	3.950482	100.7126994	JKR Hilir Perak
121	T121	40	3.950877	100.7127034	JKR Hilir Perak
122	T122	40	3.951214	100.7126964	JKR Hilir Perak
123	T123	40	3.951548	100.7126752	JKR Hilir Perak
124	T124	40	3.951923	100.7126595	JKR Hilir Perak
125	T125	40	3.952293	100.7126307	JKR Hilir Perak
126	T126	40	3.952642	100.7126119	JKR Hilir Perak
127	T127	40	3.953029	100.7125904	JKR Hilir Perak
128	T128	40	3.953349	100.7125733	JKR Hilir Perak
129	T129	40	3.953743	100.7125284	JKR Hilir Perak
130	T130	40	3.954089	100.712509	JKR Hilir Perak
131	T131	40	3.954455	100.7124774	JKR Hilir Perak
132	T132	40	3.954799	100.7124489	JKR Hilir Perak
133	T133	40	3.955165	100.7124181	JKR Hilir Perak
134	T134	40	3.955505	100.7123504	JKR Hilir Perak
135	T135	40	3.95587	100.7122528	JKR Hilir Perak
136	T136	40	3.95621	100.7121361	JKR Hilir Perak
137	T137	40	3.956548	100.7120255	JKR Hilir Perak
138	T138	40	3.956897	100.7119135	JKR Hilir Perak

### 3.0 PROPOSED NEW POLE

Proposed New Pole Coordinate					
No.	Pole Number	Distance (m)	Latitude	Longitude	Local Authority
139	T139	40	3.957233	100.7118062	JKR Hilir Perak
140	T140	40	3.957572	100.7116949	JKR Hilir Perak
141	T141	40	3.957917	100.7115876	JKR Hilir Perak
142	T142	40	3.958263	100.7114703	JKR Hilir Perak
143	T143	40	3.958602	100.7113643	JKR Hilir Perak
144	T144	40	3.958951	100.7112513	JKR Hilir Perak
145	T145	40	3.959282	100.7111313	JKR Hilir Perak
146	T146	40	3.959636	100.711025	JKR Hilir Perak
147	T147	40	3.95997	100.7109228	JKR Hilir Perak
148	T148	40	3.960263	100.7108453	JKR Hilir Perak
149	T149	40	3.96063	100.7107226	JKR Hilir Perak
150	T150	40	3.960983	100.7106173	JKR Hilir Perak
151	T151	40	3.961327	100.7105895	JKR Hilir Perak
152	T152	40	3.961635	100.7105851	JKR Hilir Perak
153	T153	40	3.949469	100.7127319	JKR Hilir Perak
154	T154	40	3.949099	100.7127467	JKR Hilir Perak
155	T155	40	3.94875	100.7127591	JKR Hilir Perak
156	T156	40	3.948387	100.7127738	JKR Hilir Perak
157	T157	40	3.948026	100.7127809	JKR Hilir Perak
158	T158	40	3.947662	100.7127983	JKR Hilir Perak
159	T159	40	3.947304	100.7128077	JKR Hilir Perak
160	T160	40	3.94694	100.7128194	JKR Hilir Perak
161	T161	40	3.946584	100.7128352	JKR Hilir Perak
162	T162	40	3.946228	100.7128415	JKR Hilir Perak
163	T163	40	3.945871	100.7128472	JKR Hilir Perak
164	T164	40	3.945504	100.7128566	JKR Hilir Perak
165	T165	40	3.945153	100.7128657	JKR Hilir Perak
166	T166	40	3.944788	100.712869	JKR Hilir Perak
167	T167	40	3.944436	100.7128697	JKR Hilir Perak
168	T168	40	3.944085	100.7128754	JKR Hilir Perak
169	T169	40	3.943736	100.7128831	JKR Hilir Perak
170	T170	40	3.943366	100.7128908	JKR Hilir Perak

### 3.0 PROPOSED NEW POLE

Proposed New Pole Coordinate					
No.	Pole Number	Distance (m)	Latitude	Longitude	Local Authority
171	T171	40	3.942998	100.7129294	JKR Hilir Perak
172	T172	40	3.942652	100.7129954	JKR Hilir Perak
173	T173	40	3.942299	100.7130561	JKR Hilir Perak
174	T174	40	3.941948	100.7131265	JKR Hilir Perak
175	T175	40	3.94159	100.7132053	JKR Hilir Perak
176	T176	40	3.941233	100.7132821	JKR Hilir Perak
177	T177	40	3.940885	100.7133555	JKR Hilir Perak
178	T178	40	3.940539	100.7134246	JKR Hilir Perak
179	T179	40	3.94018	100.713496	JKR Hilir Perak
180	T180	40	3.939824	100.7135701	JKR Hilir Perak
181	T181	40	3.939472	100.7136425	JKR Hilir Perak
182	T182	40	3.93912	100.71372	JKR Hilir Perak
183	T183	40	3.938766	100.7137934	JKR Hilir Perak
184	T184	40	3.938425	100.7138625	JKR Hilir Perak
185	T185	40	3.93808	100.7139312	JKR Hilir Perak
186	T186	40	3.937749	100.7140026	JKR Hilir Perak
187	T187	40	3.937428	100.7140666	JKR Hilir Perak
188	T188	40	3.937083	100.7141404	JKR Hilir Perak
189	T189	40	3.936731	100.7142142	JKR Hilir Perak
190	T190	40	3.936385	100.7142829	JKR Hilir Perak
191	T191	40	3.936029	100.7143543	JKR Hilir Perak
192	T192	40	3.935677	100.7144287	JKR Hilir Perak
193	T193	40	3.935325	100.7145012	JKR Hilir Perak
194	T194	40	3.934973	100.7145753	JKR Hilir Perak
195	T195	40	3.934623	100.7146453	JKR Hilir Perak
196	T196	40	3.934274	100.7147241	JKR Hilir Perak
197	T197	40	3.933921	100.7148002	JKR Hilir Perak
198	T198	40	3.933558	100.7148837	JKR Hilir Perak
199	T199	40	3.933213	100.7149659	JKR Hilir Perak
200	T200	40	3.932854	100.7150534	JKR Hilir Perak
201	T201	40	3.93251	100.7151372	JKR Hilir Perak
202	T202	40	3.932204	100.7152126	JKR Hilir Perak



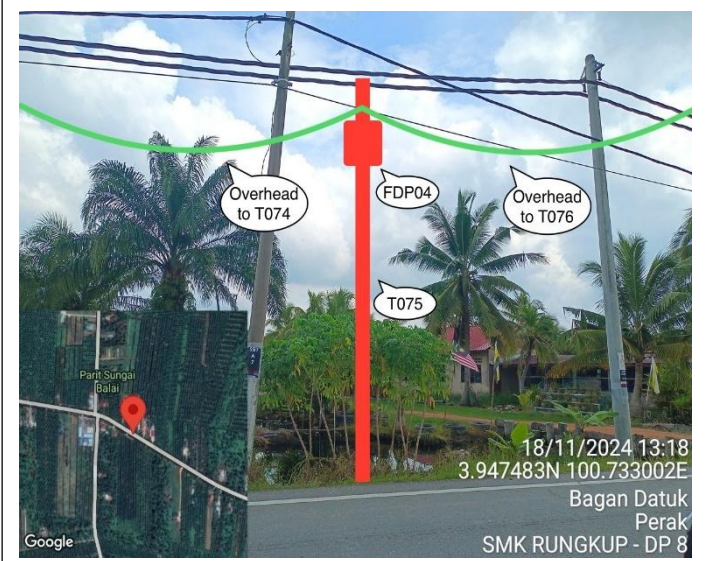
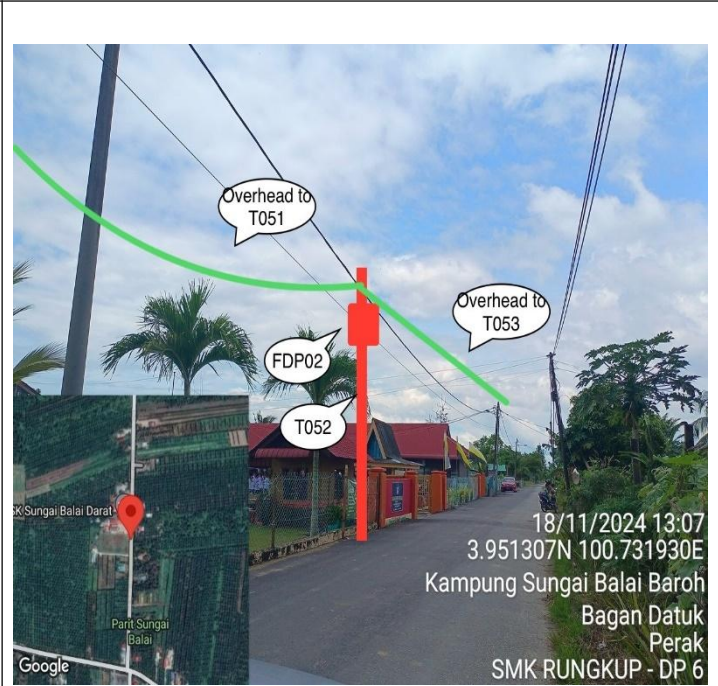
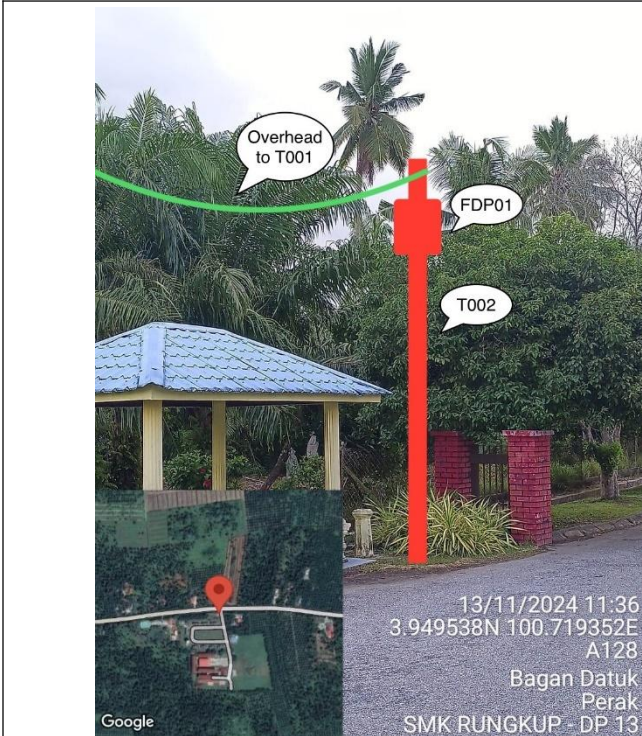
PROJEK PENYEDIAAN DAN PENYELENGGARAAN POINT OF PRESENCE (POP) FASA 2: HAB INFRASTRUKTUR GENTIAN OPTIK BERHAMPIRAN DENGAN SEKOLAH, KAWASAN PERINDUSTRIAN, PREMIS KERAJAAN DAN KOMUNITI SEKITARNYA OLEH KEMENTERIAN KOMUNIKASI MALAYSIA – ZON UTARA (KKMM.400-11/17/132(1))



### 3.0 PROPOSED NEW POLE

Proposed New Pole Coordinate					
No.	Pole Number	Distance (m)	Latitude	Longitude	Local Authority
203	T203	40	3.931888	100.7152934	JKR Hilir Perak
204	T204	40	3.931535	100.7153779	JKR Hilir Perak
205	T205	40	3.931199	100.7154624	JKR Hilir Perak
206	T206	40	3.930849	100.7155476	JKR Hilir Perak
207	T207	40	3.930499	100.7156341	JKR Hilir Perak
208	T208	40	3.930155	100.7157112	JKR Hilir Perak

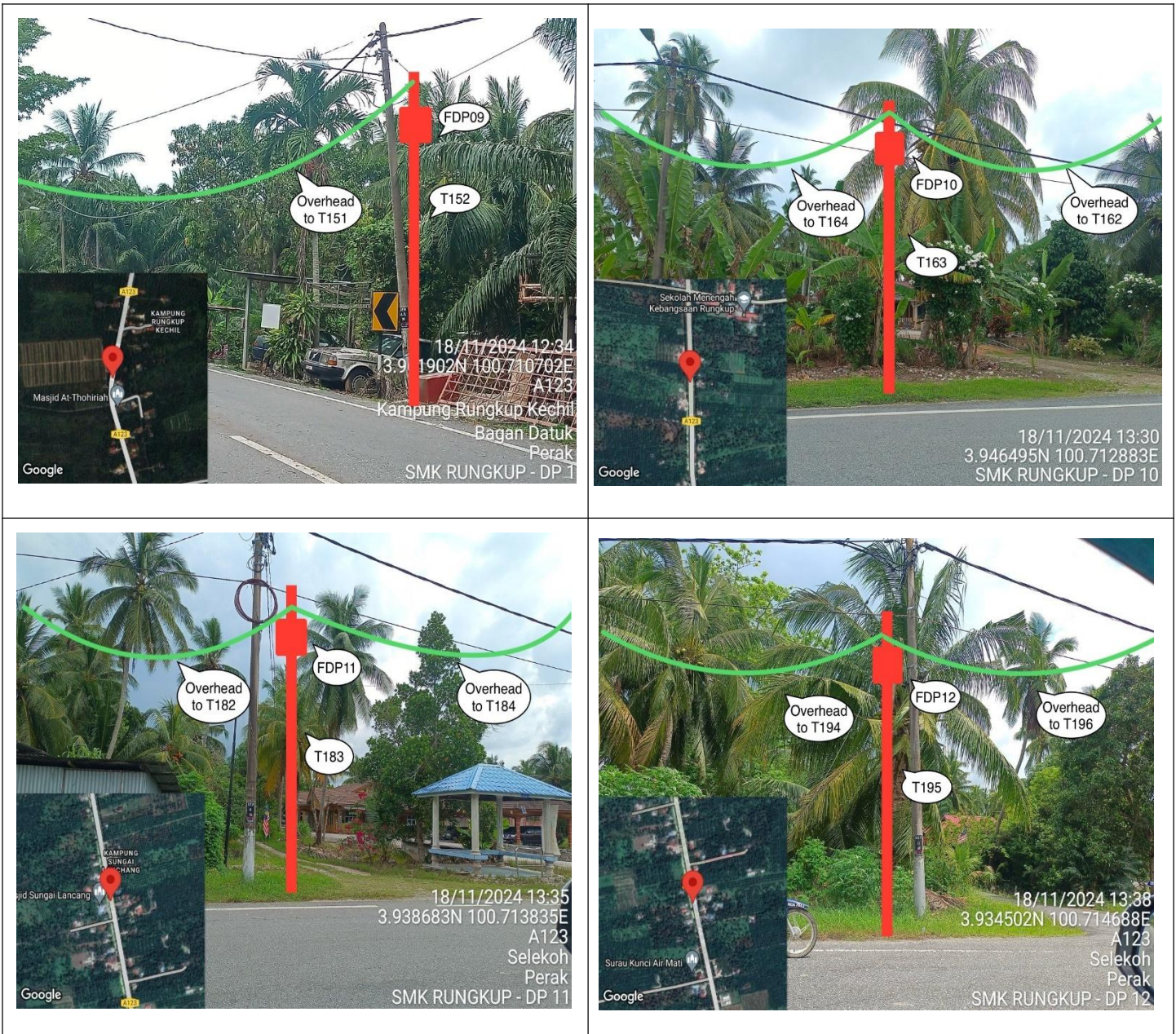
**4.0 SITE PHOTOS - PROPOSED NEW POLE**



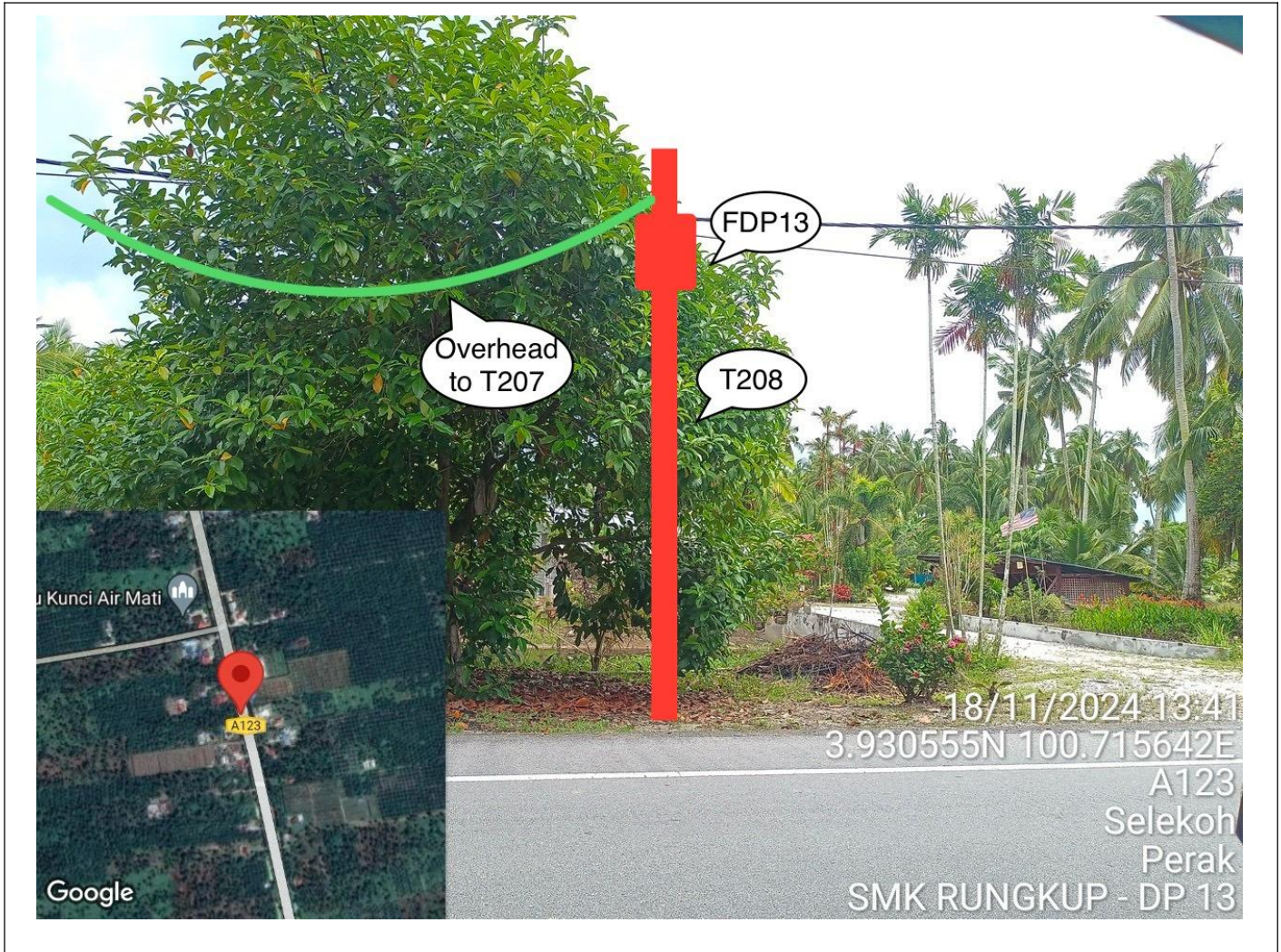
4.0 SITE PHOTOS - PROPOSED NEW POLE



**4.0 SITE PHOTOS - PROPOSED NEW POLE**



#### 4.0 SITE PHOTOS - PROPOSED NEW POLE



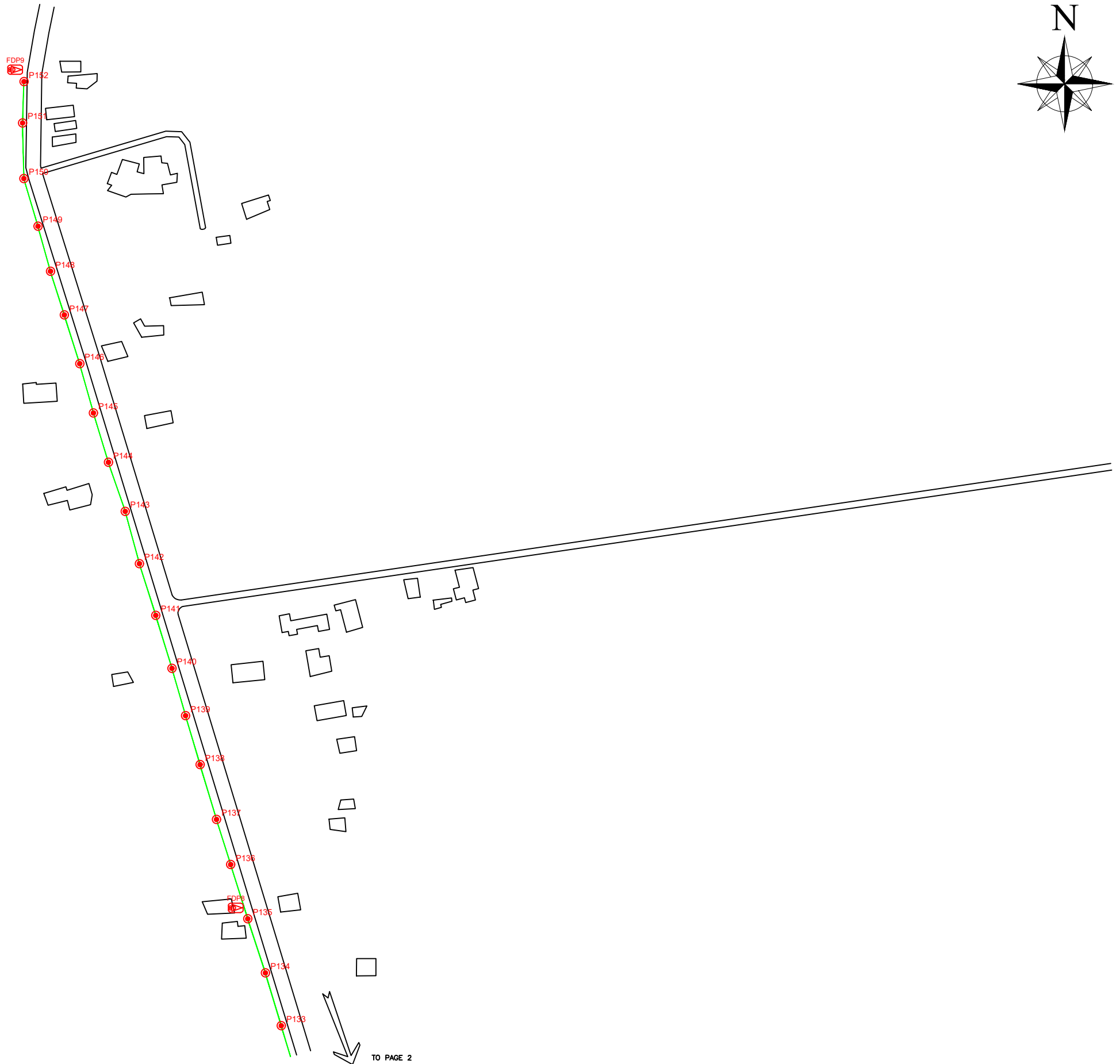


PROJEK PENYEDIAAN DAN PENYELENGGARAAN POINT OF PRESENCE (POP) FASA 2: HAB INFRASTRUKTUR GENTIAN OPTIK BERHAMPIRAN DENGAN SEKOLAH, KAWASAN PERINDUSTRIAN, PREMIS KERAJAAN DAN KOMUNITI SEKITARNYA OLEH KEMENTERIAN KOMUNIKASI MALAYSIA – ZON UTARA (KKMM.400-11/17/132(1))



### 5.0 3<sup>rd</sup> PARTIES DEPENDENCIES

NO	LOCAL COUNCIL / AUTHORITY	REMARK
1	Majlis Perbandaran Teluk Intan	4,532M
2	JKR Hilir Perak	3,545M



LEGEND

	12C FOC		Installed 1:4 splitter in FDC		INSTALLED POLE (9M)		NEW MANHOLE		TS/TB TENSION SMALL / TENSION BIG		MH NO.
	24C FOC		FDP		INSTALLED RISER		EXISTING MANHOLE		CLOSURE NO.		EXISTING TNB POLE NO.
	48C FOC		CLOSURE		SUSPENSION BIG		EXISTING ALLO POLE		FDP NO.		NEW POLE NO.
	90C FOC		NEW MANHOLE (PT)		SUSPENSION SMALL		LOOP		FDC NO.		SEE SHEET XXX
	144C FOC		INSTALLED POLE		FDC		FDP BOUNDARY				SEE SHEET XXX

KEY PLAN

KEPERHENTIAN KOMUNIKASI DAN DIGITAL

PROJECT OWNER

APEX COMMUNICATIONS SDN BHD

PRIVASAT

MAIN CONTRACTOR

KNZ Engineering

SUB-CONTRACTOR

KNZ ENGINEERING SDN BHD  
 NO. 60 & 60A, Jalan Klebang Indah 1, Medan Klebang Indah, 30100 Ipoh, Perak  
 No Tel: 019-3695071  
 Email: admin@knzengineering.com.my  
 Website: www.knzengineering.com.my

PROJECT TITLE

SEKOLAH MENENGAH KEBANGSAAN RUNGKUP

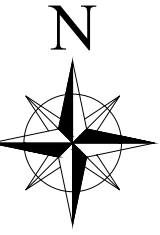
DRAWING TITLE

TP DRAWING POP 2 AT SEKOLAH MENENGAH KEBANGSAAN RUNGKUP

PROJECT PHASE

PROJECT PHASE 2

DESIGN BY	NABIL	DATE	28/11/2024
DRAWN BY	NABIL	SCALE	NOT TO SCALE
CHECKED BY	AZHAN HARIS	JOB NUMBER	AEAB005
DRAWING NUMBER		AEAB005	
PROJECT PHASE		PROJECT PHASE 2	
THIS PRINT AND ITS COPYRIGHT ARE THE PROPERTY OF KNZ ENGINEERING SDN. BHD.			1/8
			A3



LEGEND

	12C FOC		Installed 1:4 splitter in FDC		INSTALLED POLE (9M)		NEW MANHOLE		TS/1TB TENSION SMALL / TENSION BIG		MH NO.
	24C FOC		FDP		INSTALLED RISER		EXISTING MANHOLE		CLOSURE NO.		EXISTING TNB POLE NO.
	48C FOC		CLOSURE		SUSPENSION BIG		EXISTING ALLO POLE		FDP NO.		NEW POLE NO.
	90C FOC		NEW MANHOLE (PT)		SUSPENSION SMALL		LOOP		FDC NO.		SEE SHEET XXX
	144C FOC		INSTALLED POLE		FDC		FDP BOUNDARY				

KEY PLAN

PROJECT OWNER



MAIN CONTRACTOR




SUB-CONTRACTOR



KNZ ENGINEERING SDN BHD  
 NO. 60 & 60A, Jalan Klebang Indah 1,  
 Medan Klebang Indah, 30100 Ipoh, Perak  
 No Tel: 019-3695071  
 Email: admin@knzengineering.com.my  
 Website: www.knzengineering.com.my

PROJECT TITLE

SEKOLAH MENENGAH KEBANGSAAN RUNGKUP

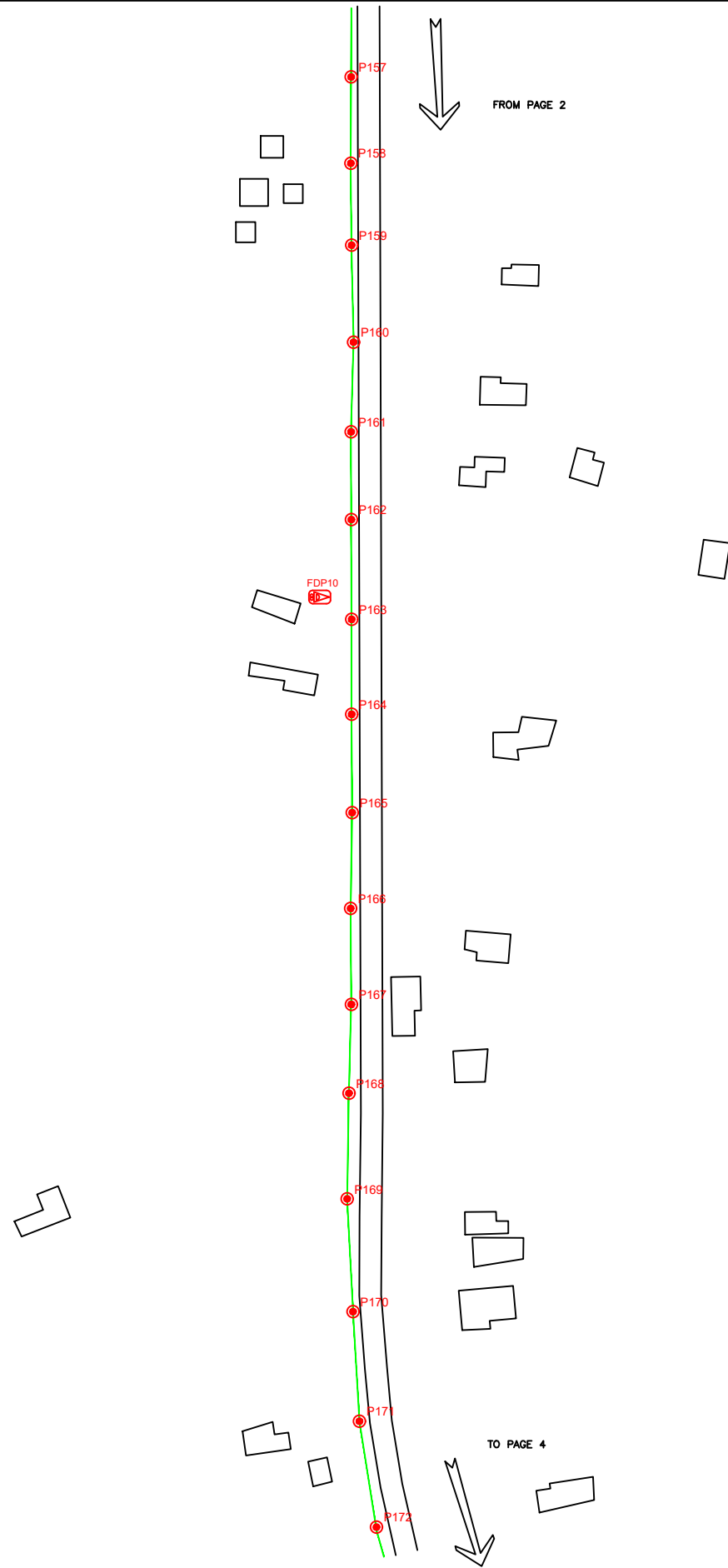
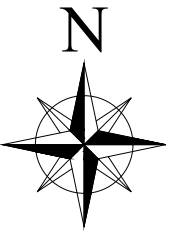
DRAWING TITLE

TP DRAWING POP 2 AT SEKOLAH MENENGAH KEBANGSAAN RUNGKUP

PROJECT PHASE

PROJECT PHASE 2

DESIGN BY	NABIL	DATE	28/11/2024
DRAWN BY	NABIL	SCALE	NOT TO SCALE
CHECKED BY	AZHAN HARIS	JOB NUMBER	AEAB005
DRAWING NUMBER		AEAB005	
THIS PRINT AND ITS COPYRIGHT ARE THE PROPERTY OF KNZ ENGINEERING SDN. BHD.		2/8	
		A3	



LEGEND

	12C FOC		INSTALLED POLE (9M)		NEW MANHOLE		TENSION SMALL / TENSION BIG		MH NO.
	24C FOC		INSTALLED RISER		EXISTING MANHOLE		EXISTING TNB POLE NO.		EXISTING TNB POLE NO.
	48C FOC		CLOSURE		SUSPENSION BIG		CLOSURE NO.		CLOSURE NO.
	90C FOC		NEW MANHOLE (PT)		SUSPENSION SMALL		FDP NO.		FDP NO.
	144C FOC		INSTALLED POLE		FDC		FDC NO.		FDC NO.

KEY PLAN

PROJECT OWNER

MAIN CONTRACTOR

SUB-CONTRACTOR

KNZ ENGINEERING SDN BHD  
 NO. 60 & 60A, Jalan Klebang Indah 1, Medan Klebang Indah, 30100 Ipoh, Perak  
 No Tel: 019-3695071  
 Email: admin@knzengineering.com.my  
 Website: www.knzengineering.com.my

PROJECT TITLE

SEKOLAH MENENGAH KEBANGSAAN RUNGKUP

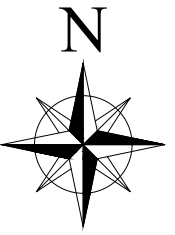
DRAWING TITLE

TP DRAWING POP 2 AT SEKOLAH MENENGAH KEBANGSAAN RUNGKUP

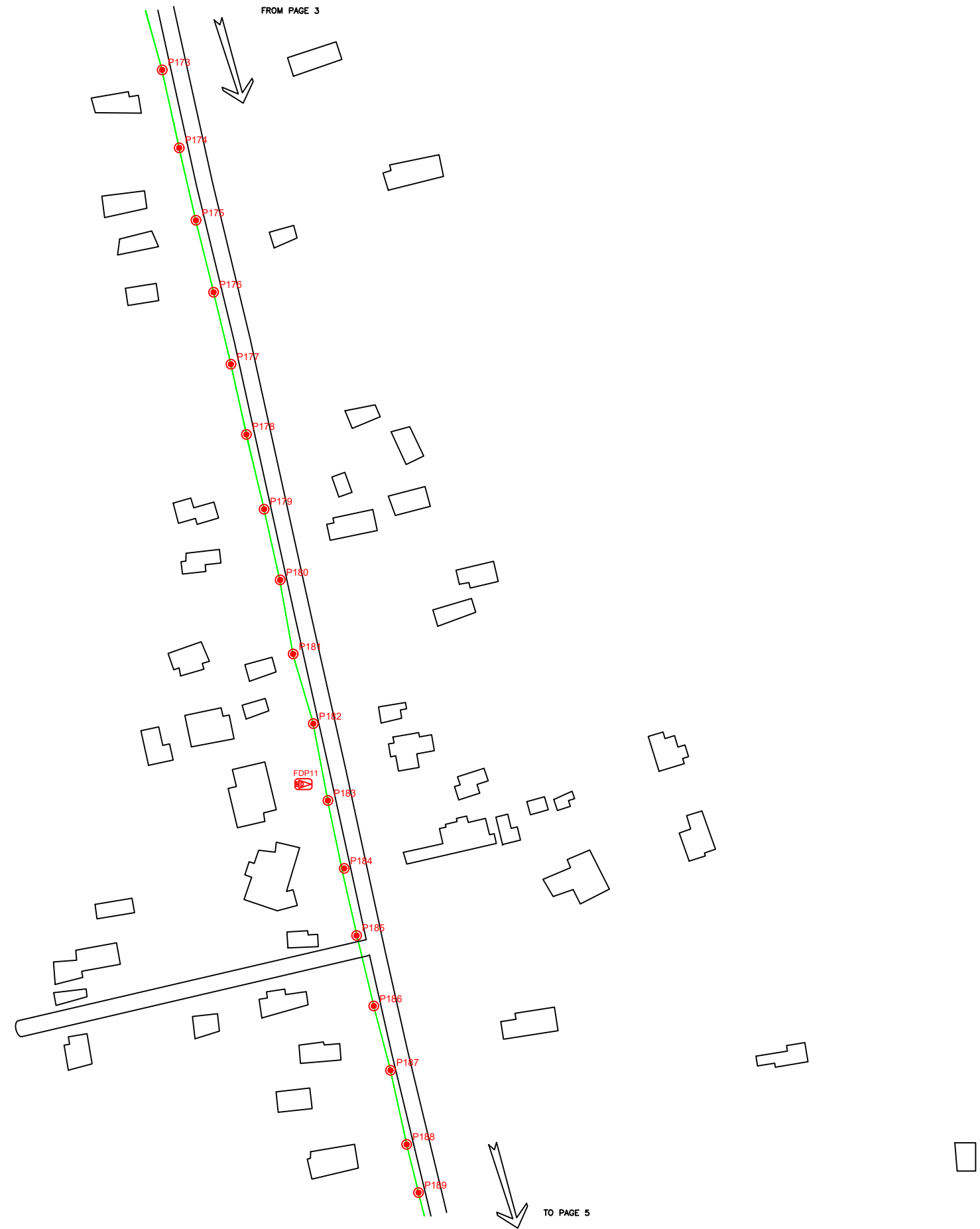
PROJECT PHASE

PROJECT PHASE 2

DESIGN BY	NABIL	DATE	28/11/2024
DRAWN BY	NABIL	SCALE	NOT TO SCALE
CHECKED BY	AZHAN HARIS	JOB NUMBER	AEAB005
DRAWING NUMBER		AEAB005	
THIS PRINT AND ITS COPYRIGHT ARE THE PROPERTY OF KNZ ENGINEERING SDN. BHD.		3/8	
		A3	



FROM PAGE 3



TO PAGE 5

LEGEND

	12C FOC		Installed 1:4 splitter in FDC		INSTALLED POLE (9M)		NEW MANHOLE		TENSION SMALL / TENSION BIG		MH NO.
	24C FOC		FDP		INSTALLED RISER		EXISTING MANHOLE		CLOSURE NO.		EXISTING TNB POLE NO.
	48C FOC		CLOSURE		SUSPENSION BIG		EXISTING ALLO POLE		LOOP		NEW POLE NO.
	90C FOC		NEW MANHOLE (PT)		SUSPENSION SMALL		FDP NO.		FDC NO.		SEE A.A. IN THIS SHEET
	144C FOC		INSTALLED POLE		FDC		FDP BOUNDARY		SEE SHEET XXX		SEE SHEET XXX

KEY PLAN

PROJECT OWNER

KEPENTERIAN KOMUNIKASI DAN DIGITAL

PROJECT OWNER

APEX COMMUNICATIONS SDN BHD

PRIVASAT

MAIN CONTRACTOR

KNZ Engineering

SUB-CONTRACTOR

KNZ ENGINEERING SDN BHD  
 NO. 60 & 60A, Jalan Klebang Indah 1, Medan Klebang Indah, 30100 Ipoh, Perak  
 No Tel: 019-3695071  
 Email: admin@knzengineering.com.my  
 Website: www.knzengineering.com.my

PROJECT TITLE

SEKOLAH MENENGAH KEBANGSAAN RUNGKUP

DRAWING TITLE

TP DRAWING POP 2 AT SEKOLAH MENENGAH KEBANGSAAN RUNGKUP

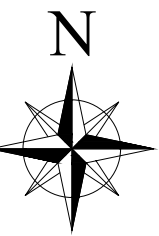
PROJECT PHASE

PROJECT PHASE 2

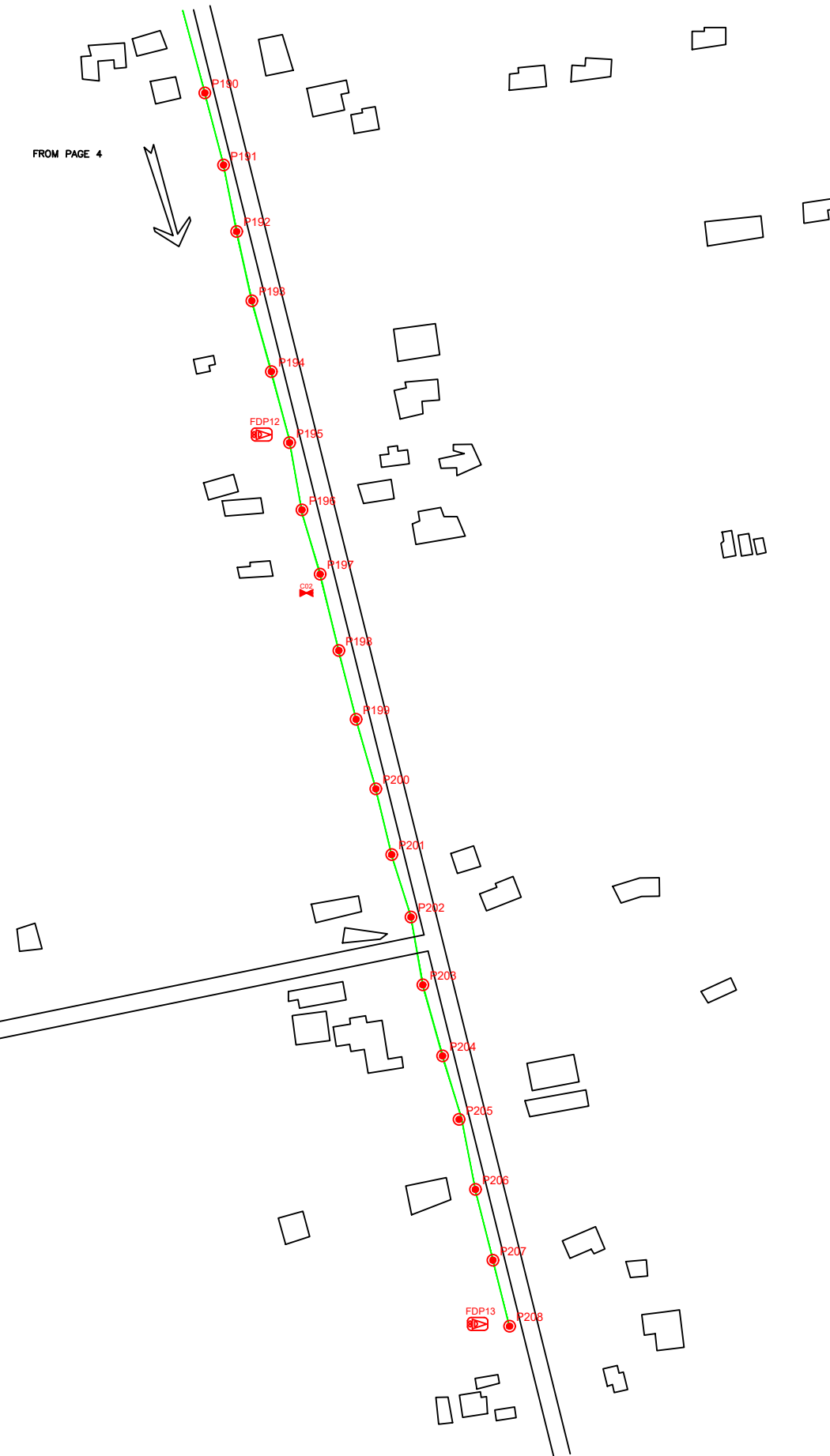
DESIGN BY	NABIL	DATE	28/11/2024
DRAWN BY	NABIL	SCALE	NOT TO SCALE
CHECKED BY	AZHAN HARIS	JOB NUMBER	AEAB005
DRAWING NUMBER		AEAB005	
THIS PRINT AND ITS COPYRIGHT ARE THE PROPERTY OF KNZ ENGINEERING SDN. BHD.		A3	

4/8

A3



FROM PAGE 4



LEGEND

	12C FOC		Installed 1:4 splitter in FDC		INSTALLED POLE (9M)		NEW MANHOLE		TENSION SMALL / TENSION BIG		MH NO.
	24C FOC		FDP		INSTALLED RISER		EXISTING MANHOLE		EXISTING TNB POLE NO.		EXISTING TNB POLE NO.
	48C FOC		CLOSURE		SUSPENSION BIG		EXISTING ALLO POLE		CLOSURE NO.		NEW POLE NO.
	90C FOC		NEW MANHOLE (PT)		SUSPENSION SMALL		LOOP		FDP NO.		SEE SHEET XXX
	144C FOC		INSTALLED POLE		FDC		FDP BOUNDARY		FDC NO.		SEE SHEET XXX

KEY PLAN

PROJECT OWNER

MAIN CONTRACTOR

SUB-CONTRACTOR

KNZ ENGINEERING SDN BHD  
 NO. 60 & 60A, Jalan Klebang Indah 1,  
 Medan Klebang Indah, 30100 Ipoh, Perak  
 No Tel: 019-3695071  
 Email: admin@knzengineering.com.my  
 Website: www.knzengineering.com.my

PROJECT TITLE

SEKOLAH MENENGAH KEBANGSAAN RUNGKUP

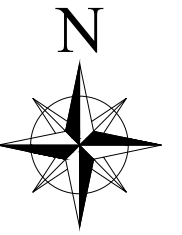
DRAWING TITLE

TP DRAWING POP 2 AT SEKOLAH MENENGAH KEBANGSAAN RUNGKUP

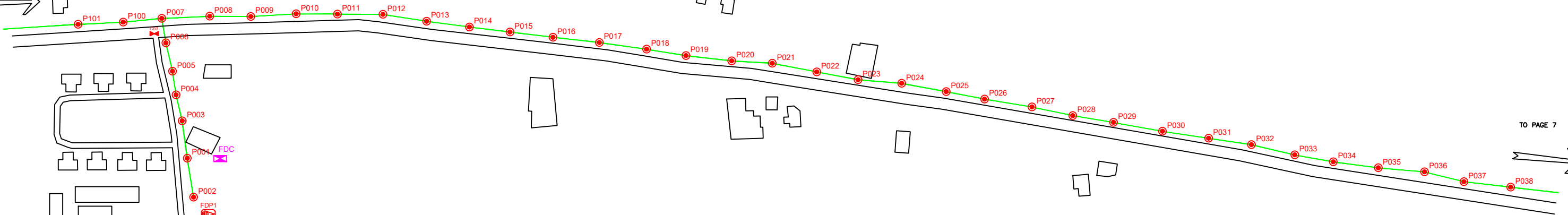
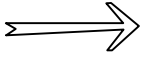
PROJECT PHASE

PROJECT PHASE 2

DESIGN BY	NABIL	DATE	28/11/2024
DRAWN BY	NABIL	SCALE	NOT TO SCALE
CHECKED BY	AZHAN HARIS	JOB NUMBER	AEAB005
DRAWING NUMBER		AEAB005	
THIS PRINT AND ITS COPYRIGHT ARE THE PROPERTY OF KNZ ENGINEERING SDN. BHD.		5/8	
		A3	



FROM PAGE 2



TO PAGE 7



SMK RUNGKUP

LEGEND

	12C FOC		Installed 1:4 splitter in FDC		INSTALLED POLE (9M)		NEW MANHOLE		TENSION SMALL / TENSION BIG		MH NO.
	24C FOC		FDP		INSTALLED RISER		HOUSE NUMBER		EXISTING MANHOLE		EXISTING TNB POLE NO.
	48C FOC		CLOSURE		SUSPENSION BIG		EXISTING ALLO POLE		CLOSURE NO.		NEW POLE NO.
	90C FOC		NEW MANHOLE (PT)		SUSPENSION SMALL		LOOP		FDP NO.		
	144C FOC		INSTALLED POLE		FDC		FDP BOUNDARY		FDC NO.		

KEY PLAN

PROJECT OWNER



MAIN CONTRACTOR



SUB-CONTRACTOR



KNZ ENGINEERING SDN BHD  
 NO. 60 & 60A, Jalan Klebang Indah 1, Medan Klebang Indah, 30100 Ipoh, Perak  
 No Tel: 019-3695071  
 Email: admin@knzengineering.com.my  
 Website: www.knzengineering.com.my

PROJECT TITLE

SEKOLAH MENENGAH KEBANGSAAN RUNGKUP

DRAWING TITLE

TP DRAWING POP 2 AT SEKOLAH MENENGAH KEBANGSAAN RUNGKUP

PROJECT PHASE

PROJECT PHASE 2

DESIGN BY NABIL DATE 28/11/2024

DRAWN BY NABIL SCALE NOT TO SCALE

CHECKED BY AZHAN HARIS JOB NUMBER AEAB005

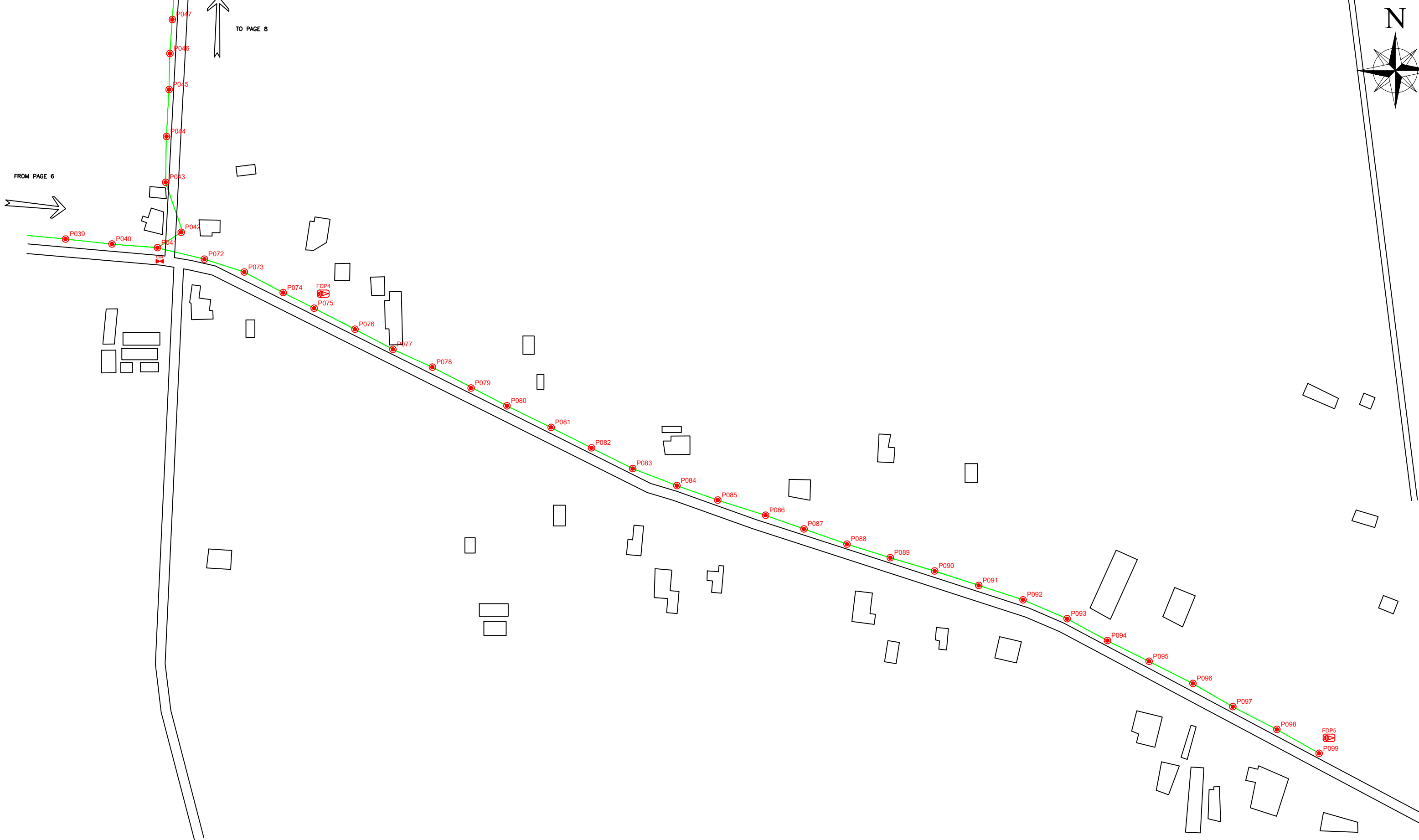
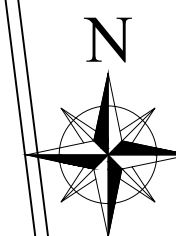
DRAWING NUMBER

AEAB005

6/8

THIS PRINT AND ITS COPYRIGHT ARE THE PROPERTY OF KNZ ENGINEERING SDN. BHD.

A3



LEGEND

	12C FOC		Installed 1:4 splitter in FDC		INSTALLED POLE (9M)		NEW MANHOLE		TS / TB TENSION SMALL / TENSION BIG		MH NO.
	24C FOC		FDP		INSTALLED RISER		HOUSE NUMBER		EXISTING MANHOLE		EXISTING TNB POLE NO.
	48C FOC		CLOSURE		SUSPENSION BIG		EXISTING ALLO POLE		CLOSURE NO.		NEW POLE NO.
	90C FOC		NEW MANHOLE (PT)		SUSPENSION SMALL		LOOP		FDP NO.		SEE A.A. IN THIS DRAWING
	144C FOC		INSTALLED POLE		FDC		FDP BOUNDARY		FDC NO.		SEE SHEET XXX

KEY PLAN

PROJECT OWNER

MAIN CONTRACTOR

SUB-CONTRACTOR

KNZ ENGINEERING SDN BHD  
 NO. 60 & 60A, Jalan Klebang Indah 1, Medan Klebang Indah, 30100 Ipoh, Perak  
 No Tel: 019-3695071  
 Email: admin@knzengineering.com.my  
 Website: www.knzengineering.com.my

PROJECT TITLE

SEKOLAH MENENGAH KEBANGSAAN RUNGKUP

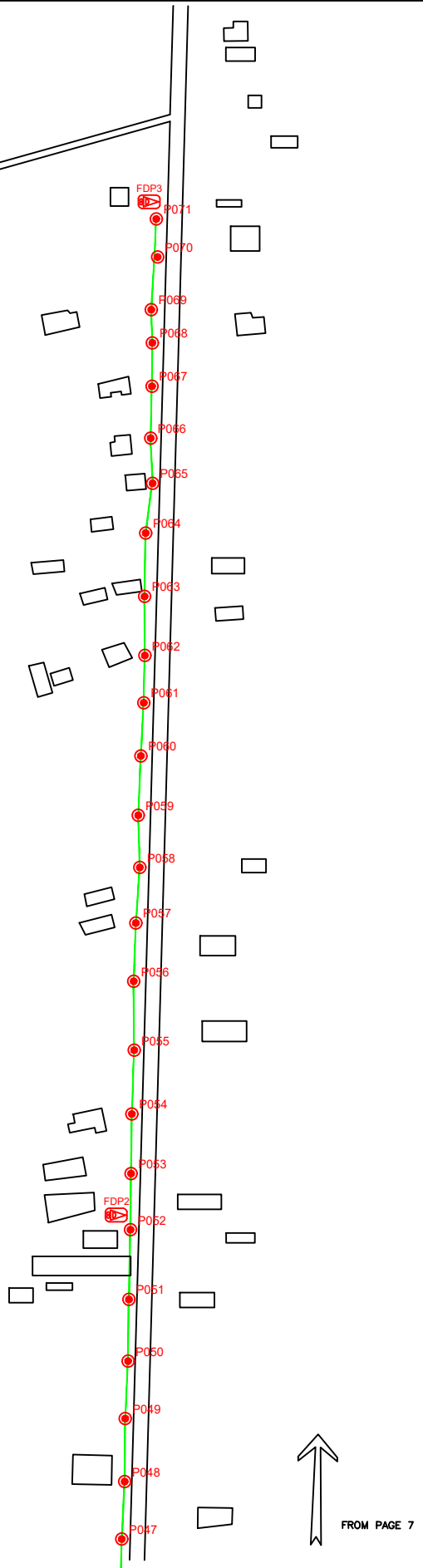
DRAWING TITLE

TP DRAWING POP 2 AT SEKOLAH MENENGAH KEBANGSAAN RUNGKUP

PROJECT PHASE

PROJECT PHASE 2

DESIGN BY	NABIL	DATE	28/11/2024
DRAWN BY	NABIL	SCALE	NOT TO SCALE
CHECKED BY	AZHAN HARIS	JOB NUMBER	AEAB005
DRAWING NUMBER		AEAB005	
THIS PRINT AND ITS COPYRIGHT ARE THE PROPERTY OF KNZ ENGINEERING SDN. BHD.		7/8	
		A3	



LEGEND

	12C FOC		Installed 1:4 splitter in FDC		INSTALLED POLE (9M)		NEW MANHOLE		TENSION SMALL / TENSION BIG		MH NO.
	24C FOC		FDP		INSTALLED RISER		HOUSE NUMBER		EXISTING MANHOLE		EXISTING TNB POLE NO.
	48C FOC		CLOSURE		SUSPENSION BIG		EXISTING ALLO POLE		CLOSURE NO.		NEW POLE NO.
	90C FOC		NEW MANHOLE (PT)		SUSPENSION SMALL		LOOP		FDP NO.		SEE A.A TO B.B
	144C FOC		INSTALLED POLE		FDC		FDP BOUNDARY		FDC NO.		SEE SHEET XXX

KEY PLAN

PROJECT OWNER



KEPENTERIAN KOMUNIKASI DAN DIGITAL

MAIN CONTRACTOR




SUB-CONTRACTOR



KNZ ENGINEERING SDN BHD  
 NO. 60 & 60A, Jalan Klebang Indah 1,  
 Medan Klebang Indah, 30100 Ipoh, Perak  
 No Tel: 019-3695071  
 Email: admin@knzengineering.com.my  
 Website: www.knzengineering.com.my

PROJECT TITLE

SEKOLAH MENENGAH KEBANGSAAN RUNGKUP

DRAWING TITLE

TP DRAWING POP 2 AT SEKOLAH MENENGAH KEBANGSAAN RUNGKUP

PROJECT PHASE

PROJECT PHASE 2

DESIGN BY	NABIL	DATE	28/11/2024
DRAWN BY	NABIL	SCALE	NOT TO SCALE
CHECKED BY	AZHAN HARIS	JOB NUMBER	AEAB005
DRAWING NUMBER		AEAB005	
THIS PRINT AND ITS COPYRIGHT ARE THE PROPERTY OF KNZ ENGINEERING SDN. BHD.		8/8	
		A3	