

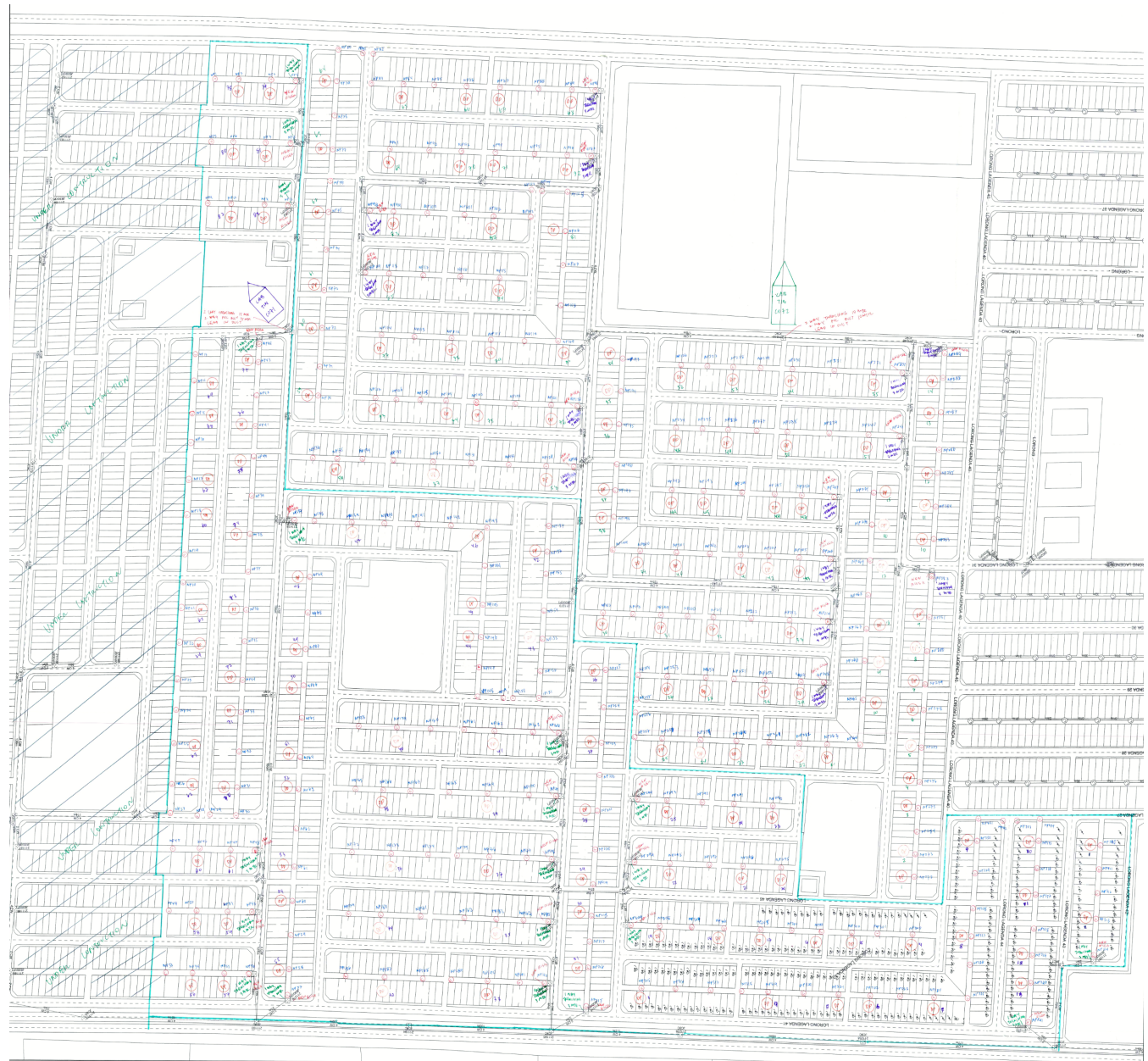
1.1 FDC Location



Legend:

 NEW CAB

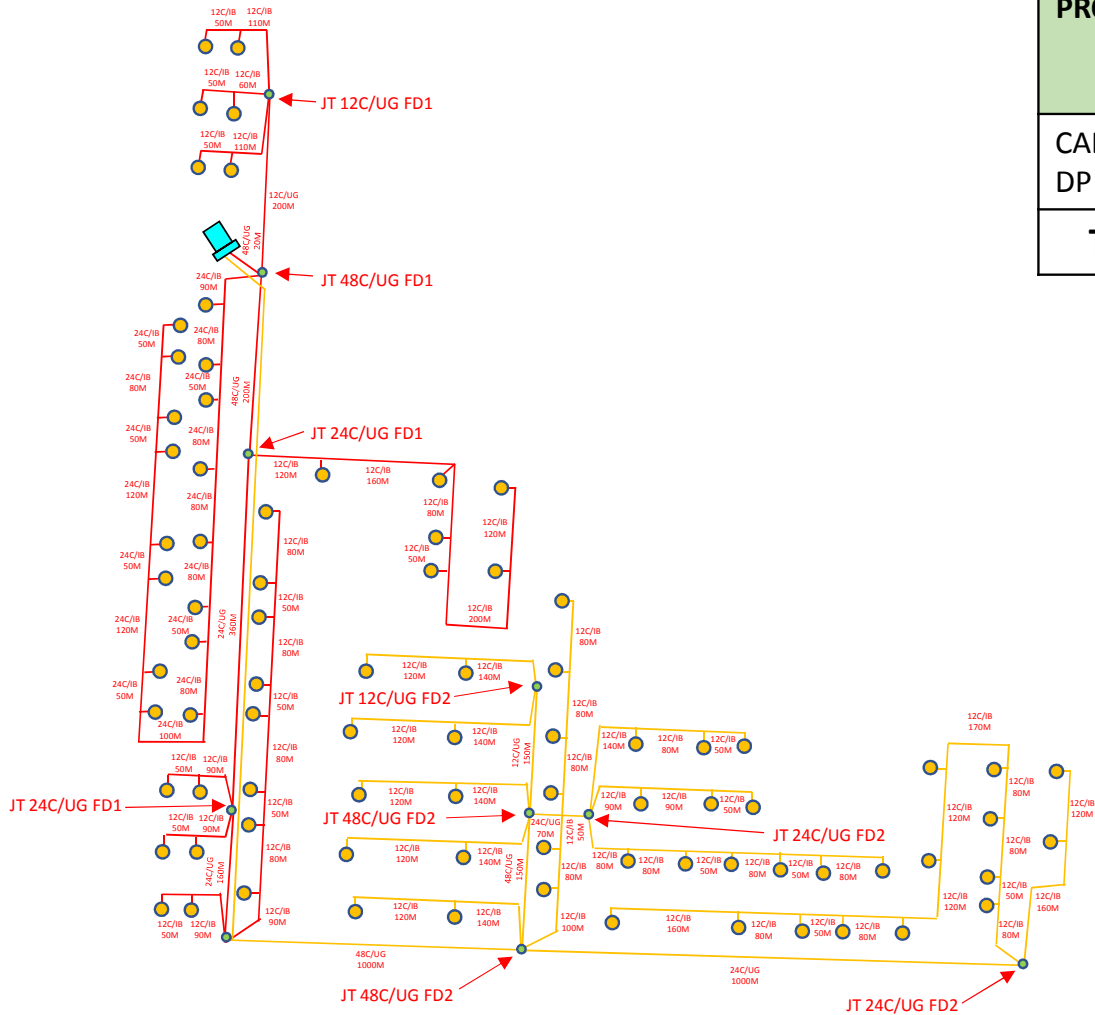
2.1 Detail Fiber Route to the site D-SIDE



Legend:  FDC  EXST MH  FDP  NEW POLE  EXST POLE  BOUNDARY

2.3

Detail Fiber Route to the site - SLD (TIN C071)

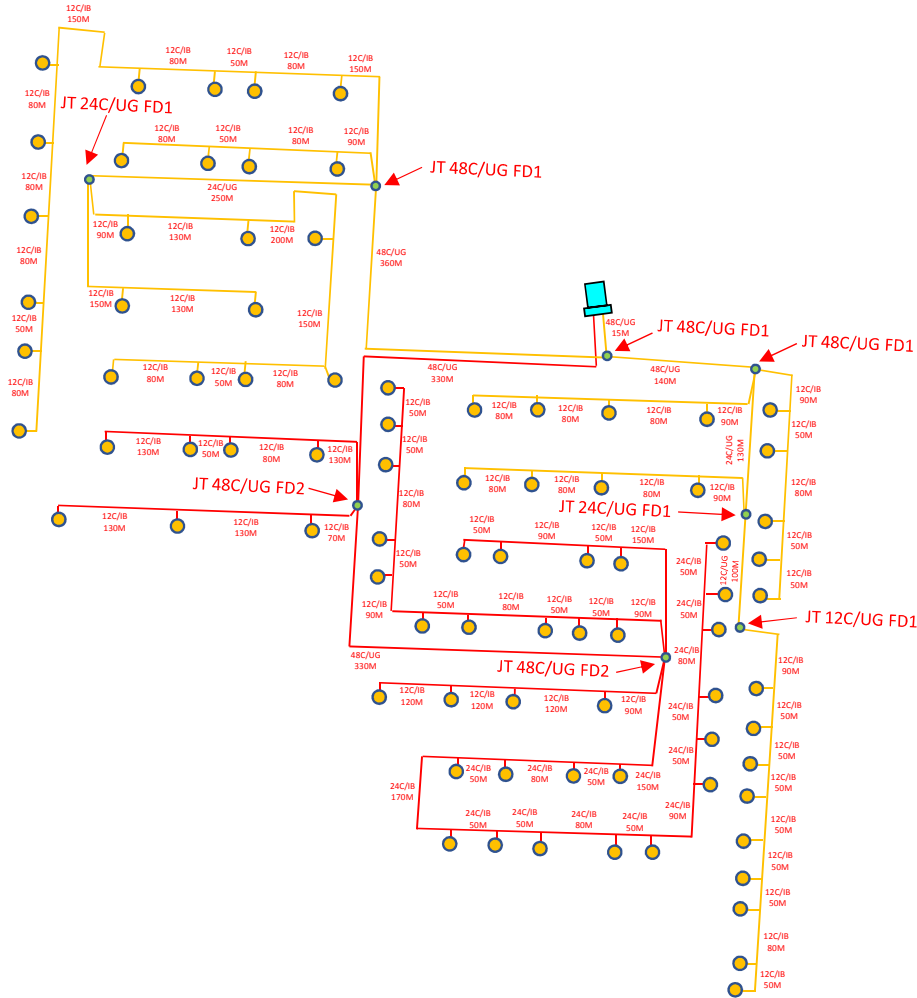


PROPOSE	TOTAL FOC 12C/UG	TOTAL FOC 12C/IB	TOTAL FOC 24C/UG	TOTAL FOC 24C/IB	TOTAL FOC 48C/UG
CAB TO DP	350	6130	1590	1130	1370
TOTAL	350m	6130m	1590m	1130m	1370m

Legend:  CAB  New FOC (IB/UG)  JOINTING  DP

2.3

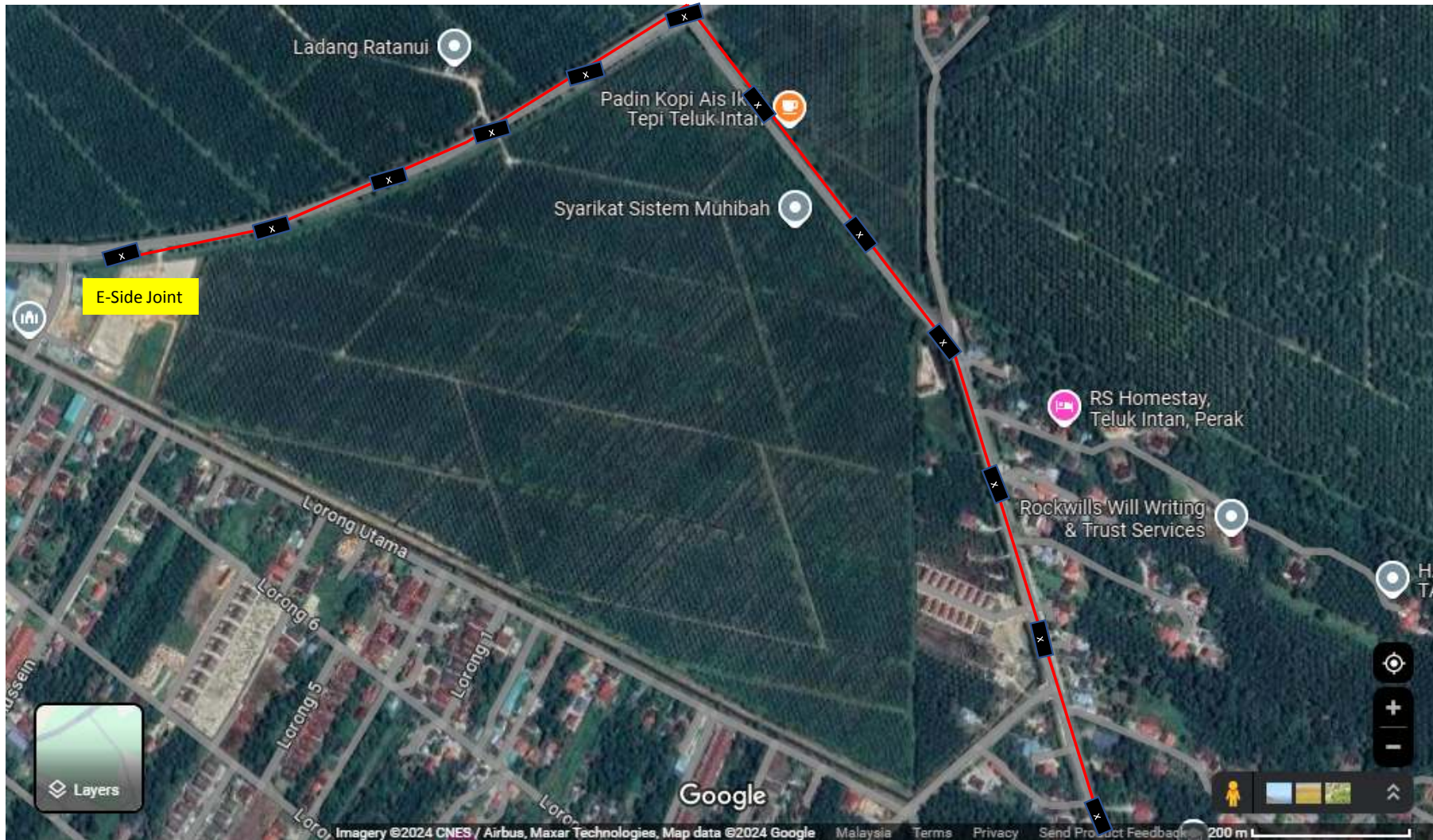
Detail Fiber Route to the site - SLD (TIN C071)



PROPOSE	TOTAL FOC 12C/UG	TOTAL FOC 12C/IB	TOTAL FOC 24C/UG	TOTAL FOC 24C/IB	TOTAL FOC 48C/UG
CAB TO DP	100	5640	380	1100	1179
TOTAL	100m	5640m	380m	1100m	1179m

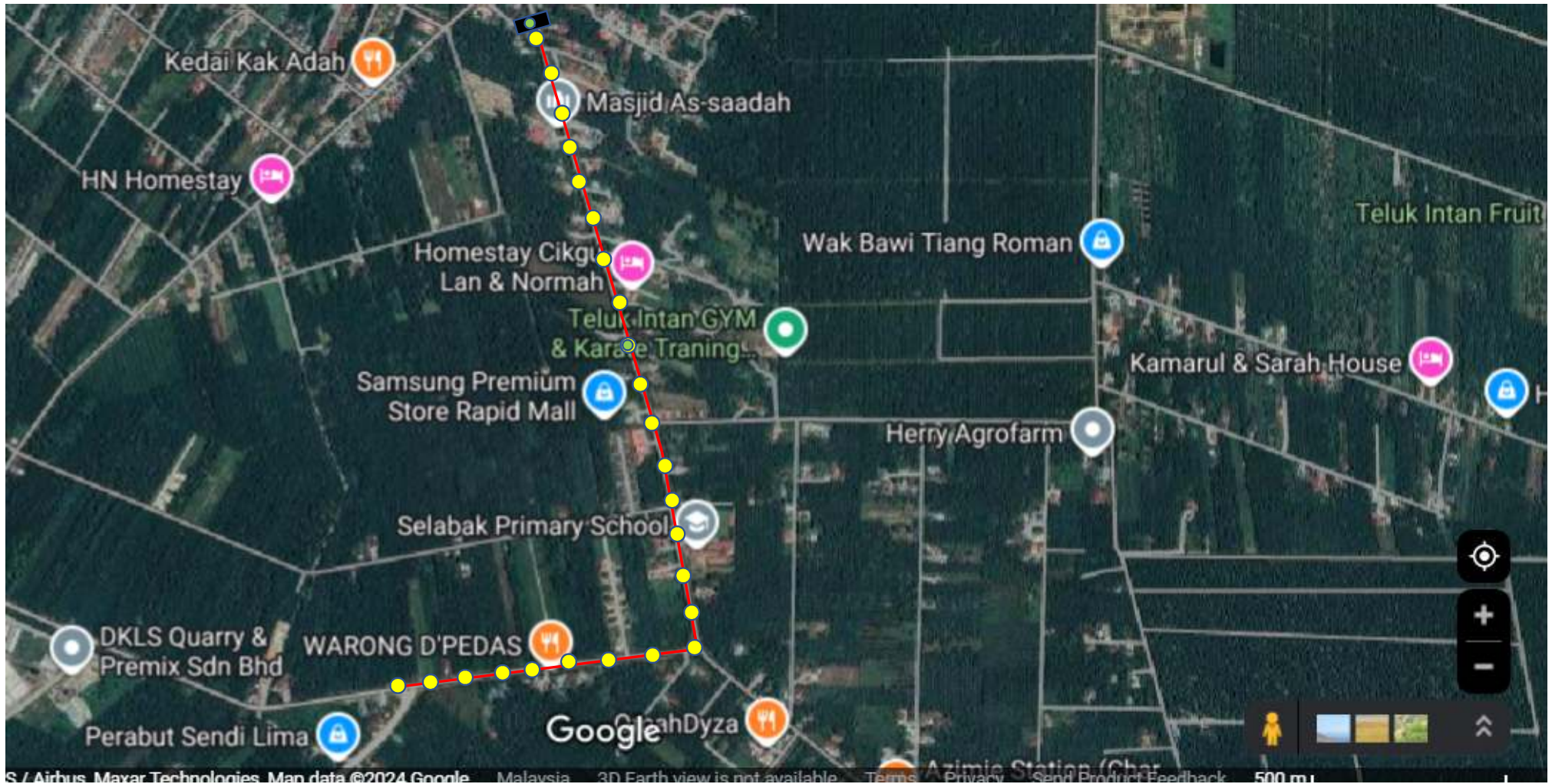
Legend:  CAB  New FOC (IB/UG)  JOINTING  DP

2.4 Detail Fiber Route to the site E-SIDE (F39/F40)



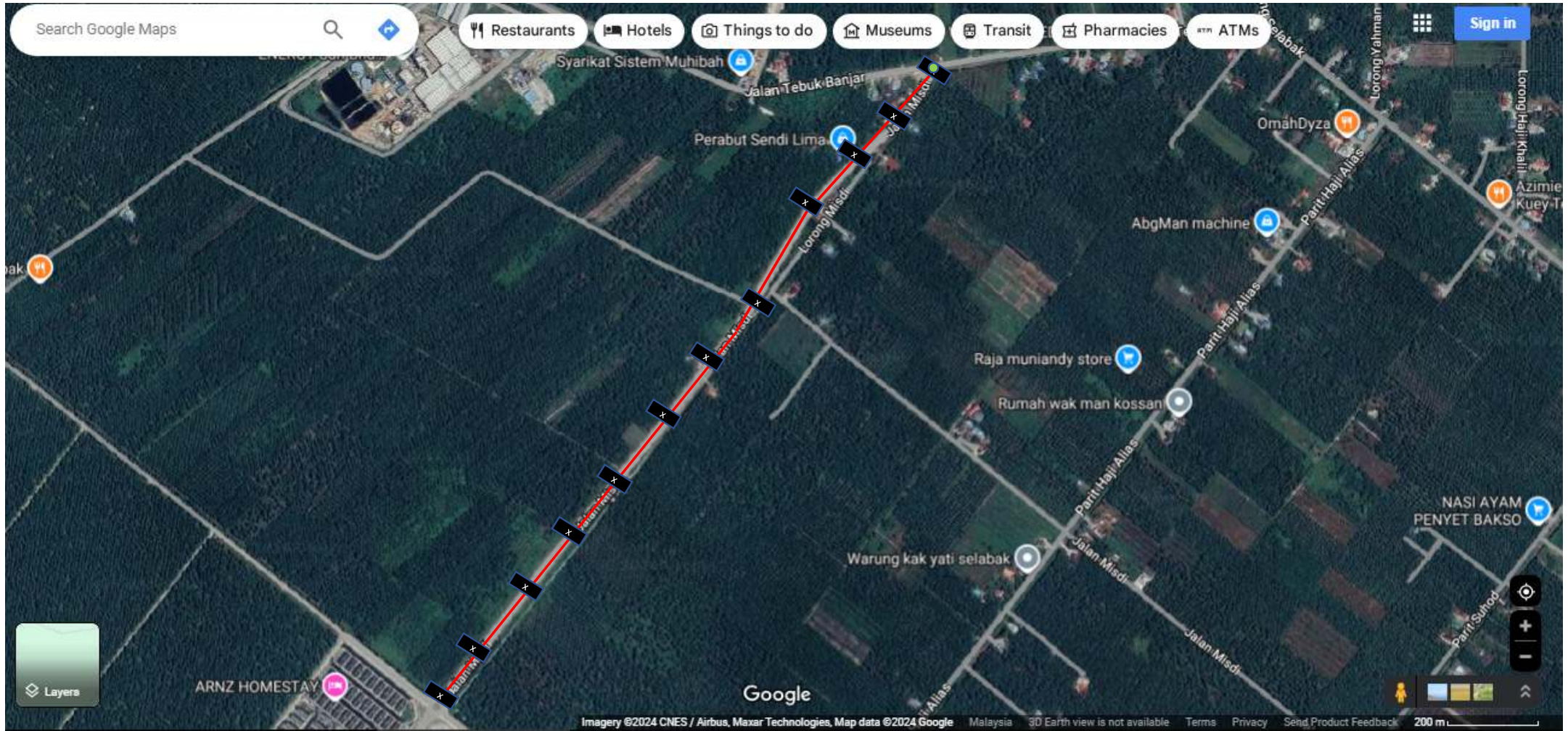
Legend:  FDC  EXST MH  FDP  JT  EXST POLE  BOUNDARY

2.4 Detail Fiber Route to the site E-SIDE (F39/F40)



Legend:  FDC  EXST MH  FDP  JT  EXST POLE  BOUNDARY

2.4 Detail Fiber Route to the site E-SIDE (F39/F40)



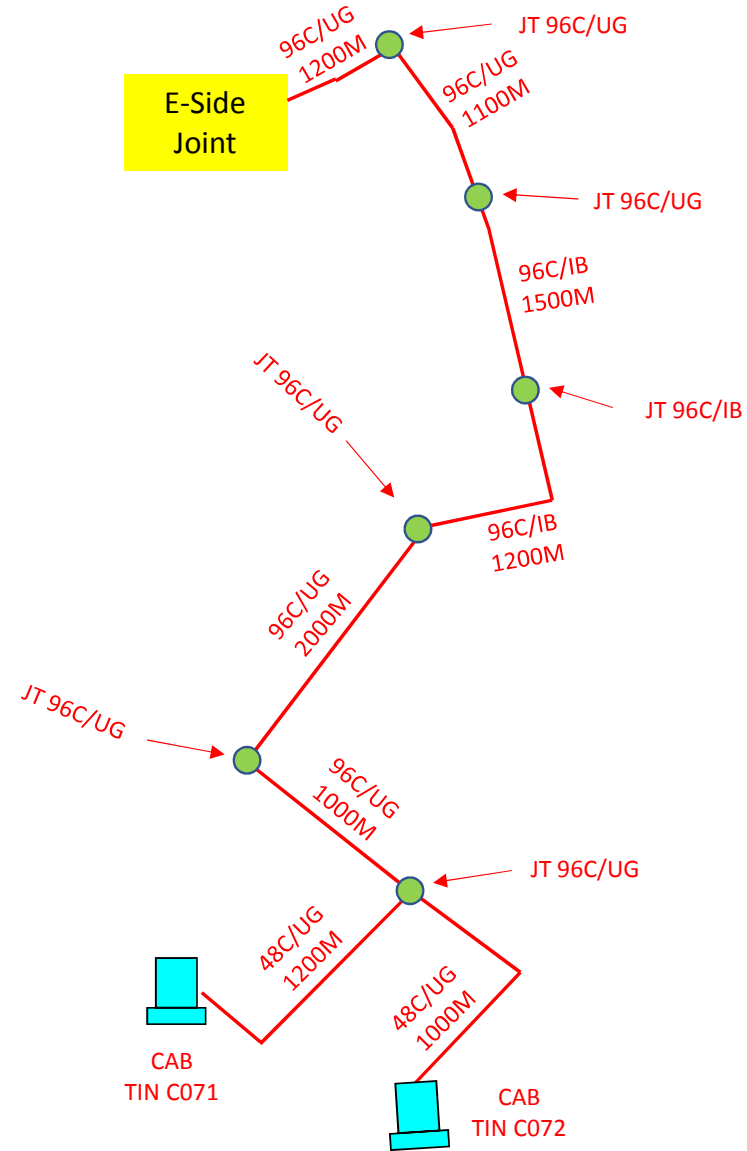
Legend:  FDC  EXST MH  FDP  JT  EXST POLE  BOUNDARY

2.4 Detail Fiber Route to the site E-SIDE (F39/F40)



Legend:  FDC  EXST MH  FDP  JT  EXST POLE  BOUNDARY

2.5 SLD Route to the site E-SIDE (F39/F40)



PROPOSE	TOTAL FOC 96C/UG	TOTAL FOC 96C/IB	TOTAL FOC 48C/UG
E-SIDE TO CAB	5300	2700	2200
TOTAL	5300m	2700m	2200m

Legend:  FDC  EXST MH  FDP  JT  EXST POLE  BOUNDARY

