

TECHNICAL PROPOSAL

POP2 ABD0082 SEKOLAH JENIS KEBANGSAAN (TAMIL) LADANG BIDOR TAHAN (D-SIDE)

| | |
|-------------------------|---|
| Company Name: | STEADCOM SDN BHD |
| Company Address: | 11-3, 11-3, Jalan Puteri 2/6, Bandar Puteri, 47100 Puchong, Selangor |
| Prepared By: | HANIERAH |
| Date: | 18/12/2024 |



Starting Point

| | |
|----------------------|---|
| Site / Boundary Name | Bidor |
| Address | Sekolah Jenis Kebangsaan (Tamil) Ladang Bidor Tahan |
| District | Bidor |
| Postcode | 35500 |
| State | Perak |
| GPS Coordinate | 4.089855, 101.284878 |
| LRD | A |

End Point

| | |
|----------------------|----------------------|
| Site / Boundary Name | Bidor |
| Address | Bidor, Perak |
| District | Bidor |
| Postcode | 35500 |
| State | Perak |
| GPS Coordinate | 4.099030, 101.288427 |
| LRD | B |



PROJEK PENYEDIAAN DAN PENYELENGGARAAN POINT OF PRESENCE (POP)
 FASA 2: HAB INFRASTRUKTUR GENTIAN OPTIK BERHAMPIRAN DENGAN
 SEKOLAH, KAWASAN PERINDUSTRIAN, PREMIS KERAJAAN DAN KOMUNITI
 SEKITARNYA OLEH KEMENTERIAN KOMUNIKASI MALAYSIA - ZON UTARA
 (KKMM.400-11/17/132(1))

STEADCOM
 A member of OCK Group Berhad

1.0 Work Summary

| No | Proposed Distance and Method | Unit | Qty |
|----|---------------------------------------|------|------------|
| 1 | Horizontal Directional Drilling (HDD) | m | 237 |
| 2 | Carriage Way Open trench (CW) | m | 0 |
| 3 | Grass Verge Open Trenching (GV) | m | 0 |
| 4 | Micro trenching (MT) | m | 0 |
| | Total | | 0 |

| | Other Information | Unit | Qty |
|---|--|------|-----------|
| 1 | Proposed Manhole | EA | 2 |
| 2 | Proposed Pole | EA | 80 |
| 3 | Joint Closure | EA | 2 |
| 4 | Estimated time required for completion | days | 90 |



PROJEK PENYEDIAAN DAN PENYELENGGARAAN POINT OF PRESENCE (POP)
FASA 2: HAB INFRASTRUKTUR GENTIAN OPTIK BERHAMPIRAN DENGAN
SEKOLAH, KAWASAN PERINDUSTRIAN, PREMIS KERAJAAN DAN KOMUNITI
SEKITARNYA OLEH KEMENTERIAN KOMUNIKASI MALAYSIA - ZON UTARA
(KKMM.400-11/17/132(1))

STEADCOM
A member of OCK Group Berhad

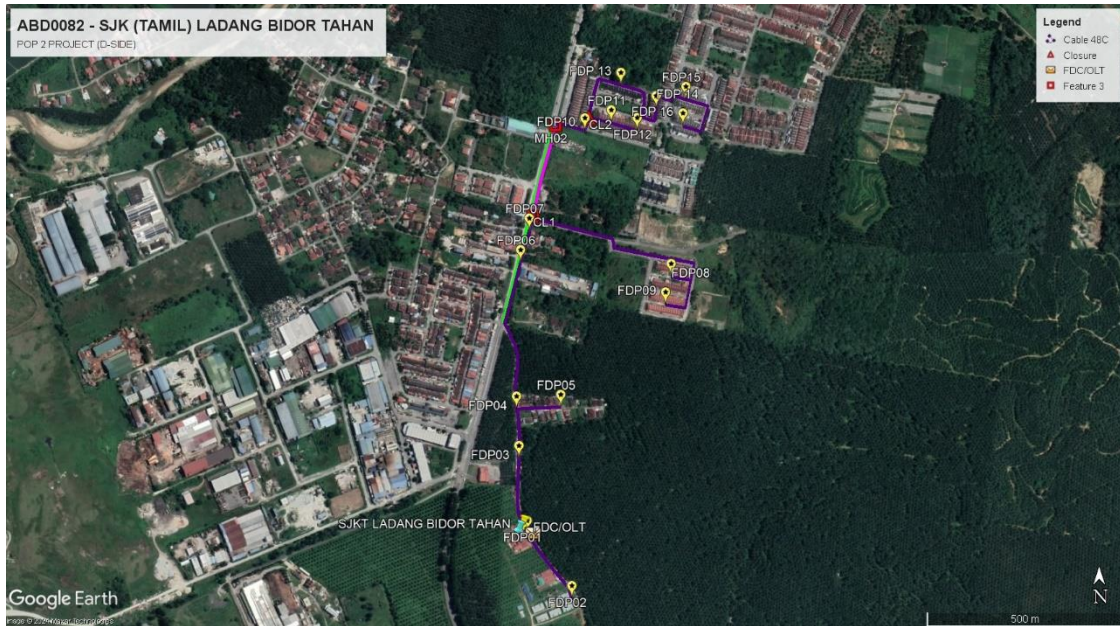
2.0 LOCAL AUTHORITY SUMMARY

Daerah Sungkai

| Bil | Items | Owner | Quantity | Distance |
|-------|-------------------|-----------------------|----------|----------|
| 1 | HDD | JKR | 2 | 237m |
| | | Majlis | - | - |
| | | Estate / Private Land | - | - |
| 2 | New Pole | JKR | 9 | 278m |
| | | Majlis | 71 | 2411m |
| | | Estate / Private Land | - | - |
| 3 | Existing TNB Pole | JKR | - | - |
| | | Majlis | - | - |
| | | Estate / Private Land | - | - |
| Total | | | | 2926m |

3.0 SITE PLAN KMZ (Overview site area)

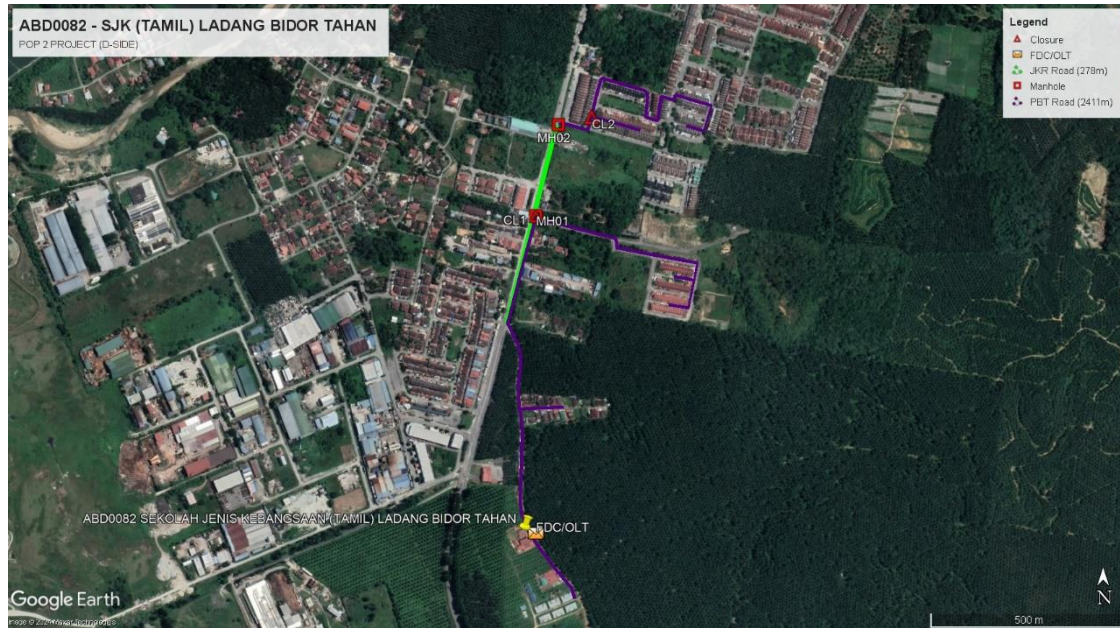
3.1 Proposed FDP



3.2 Proposed New Pole



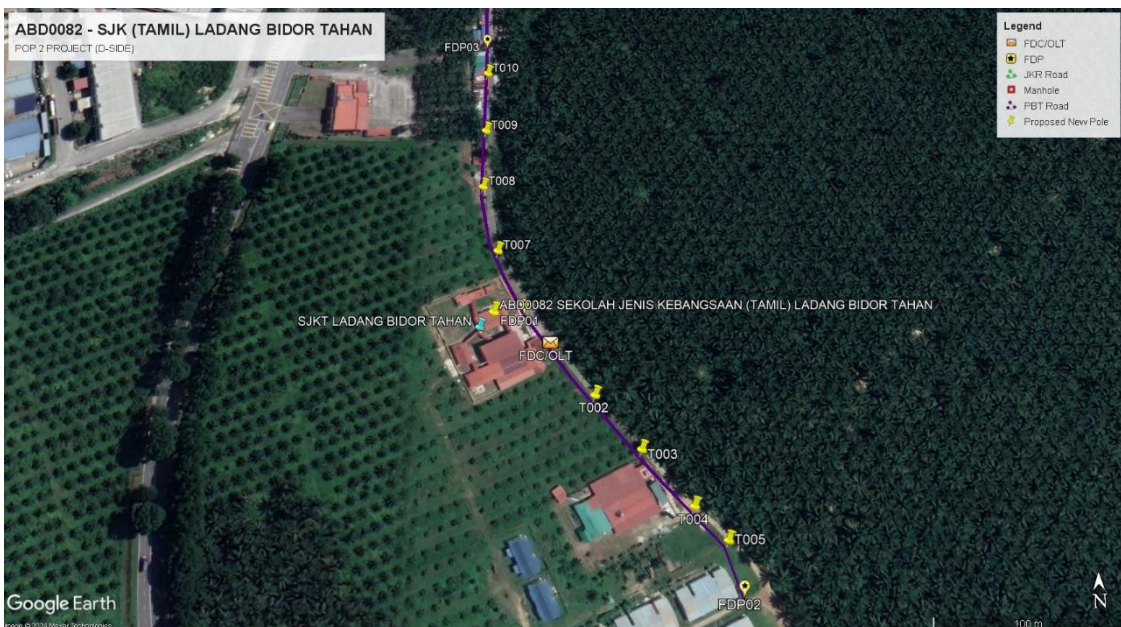
3.3 Site Plan KMZ Routing (All Local Authority)



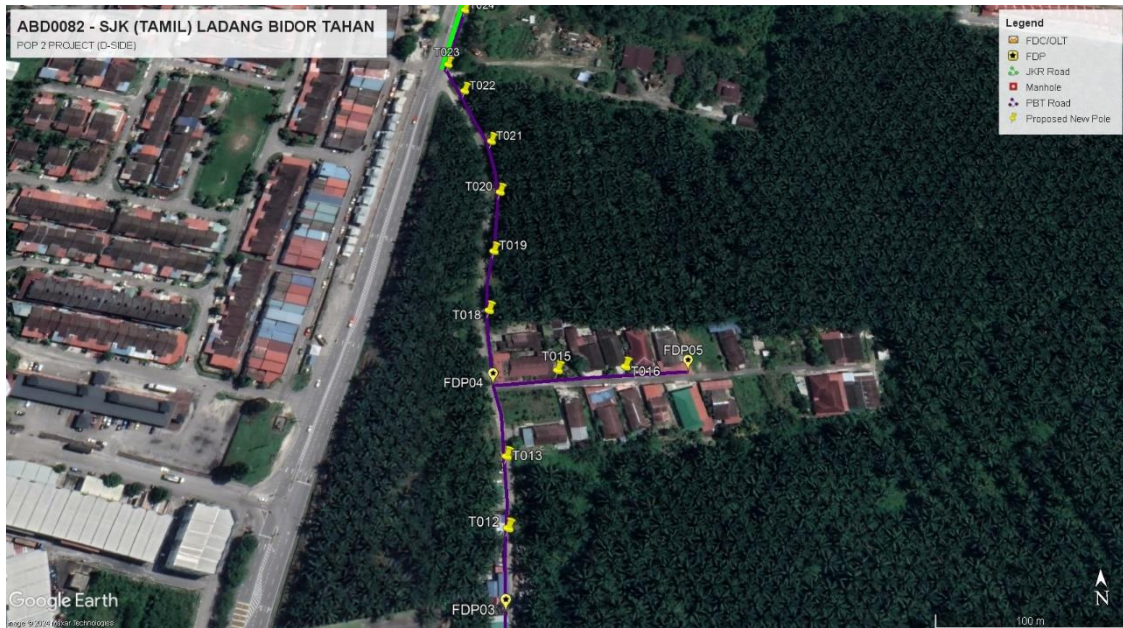
Green Colour – JKR Road

Purple Colour – PBT Road

3.4 Site Plan – KMZ Routing (All site area)
i) Route 1



Route 1.1



Route 1.2

ii) **Route 2**

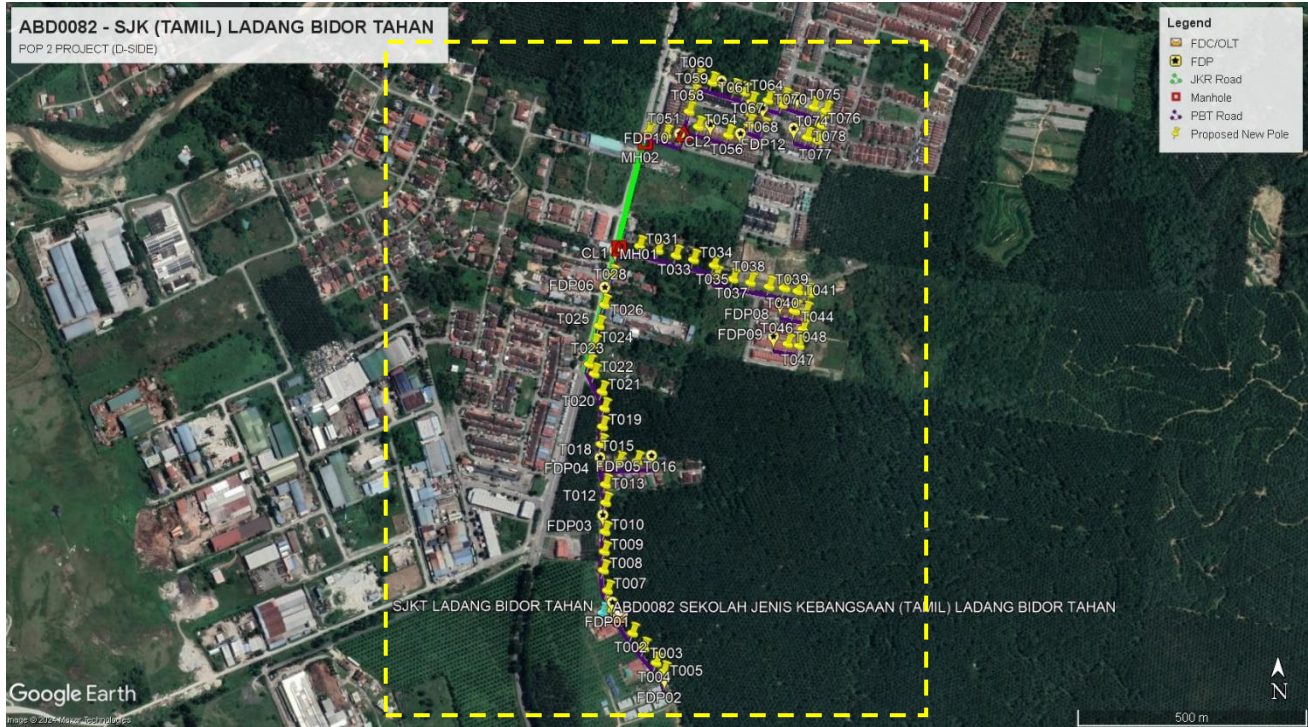


Route 2.1



Route 2.2

3.5 Site Plan – KMZ Routing (Proposed new Pole)





PROJEK PENYEDIAAN DAN PENYELENGGARAAN POINT OF PRESENCE (POP)
 FASA 2: HAB INFRASTRUKTUR GENTIAN OPTIK BERHAMPIRAN DENGAN
 SEKOLAH, KAWASAN PERINDUSTRIAN, PREMIS KERAJAAN DAN KOMUNITI
 SEKITARNYA OLEH KEMENTERIAN KOMUNIKASI MALAYSIA - ZON UTARA
 (KKMM.400-11/17/132(1))



4.0 PROPOSED NEW POLE LAT & LONG TABLE

| No | LABEL | POLE NO | LATITUDE | LONGITUDE | Local Authority |
|----|---------|---------|-------------|-------------|---------------------|
| 1 | FDC/OLT | T000 | 4.089563 | 101.285006 | Majlis Daerah Tapah |
| 2 | CL1 | T030 | 4.096968 | 101.285003 | Majlis Daerah Tapah |
| 3 | CL2 | T053 | 4.099229 | 101.286282 | Majlis Daerah Tapah |
| 4 | MH 01 | T030 | 4.096984 | 101.285009 | JKR Persekutuan |
| 5 | MH 02 | T050 | 4.099049 | 101.28552 | JKR Persekutuan |
| 6 | FDP 01 | T001 | 4.08976434 | 101.284873 | Majlis Daerah Tapah |
| 7 | FDP 02 | T006 | 4.088284299 | 101.2858939 | Majlis Daerah Tapah |
| 8 | FDP 03 | T011 | 4.091469979 | 101.2846851 | Majlis Daerah Tapah |
| 9 | FDP 04 | T014 | 4.092592101 | 101.284631 | Majlis Daerah Tapah |
| 10 | FDP 05 | T017 | 4.092631227 | 101.2856402 | Majlis Daerah Tapah |
| 11 | FDP 06 | T027 | 4.095922511 | 101.2847244 | JKR Persekutuan |
| 12 | FDP 07 | T029 | 4.096641547 | 101.2849225 | JKR Persekutuan |
| 13 | FDP 08 | T045 | 4.095607049 | 101.288159 | Majlis Daerah Tapah |
| 14 | FDP 09 | T049 | 4.094960748 | 101.2880313 | Majlis Daerah Tapah |
| 15 | FDP 10 | T052 | 4.098920038 | 101.2861908 | Majlis Daerah Tapah |
| 16 | FDP 11 | T055 | 4.099102518 | 101.2867926 | Majlis Daerah Tapah |
| 17 | FDP 12 | T057 | 4.098926039 | 101.287384 | Majlis Daerah Tapah |
| 18 | FDP 13 | T062 | 4.09995268 | 101.2870121 | Majlis Daerah Tapah |
| 19 | FDP 14 | T069 | 4.09942621 | 101.2878173 | Majlis Daerah Tapah |
| 20 | FDP 15 | T073 | 4.099634331 | 101.2884948 | Majlis Daerah Tapah |
| 21 | FDP 16 | T079 | 4.099030205 | 101.2884273 | Majlis Daerah Tapah |

4.1 OVERALL, POLE (PROPOSED NEW POLE)

| NO | Pole & Manhole ID | Distance | Latitude | Longitude | Local Authority |
|----|-------------------|----------|-------------|-------------|---------------------|
| 1 | T000 | 0 | 4.089563 | 101.285006 | Mallis Daerah Tapah |
| 2 | T001 | 25 | 4.08976434 | 101.284873 | Mallis Daerah Tapah |
| 3 | T002 | 42 | 4.089278067 | 101.2852151 | Mallis Daerah Tapah |
| 4 | T003 | 40 | 4.088987101 | 101.285437 | Mallis Daerah Tapah |
| 5 | T004 | 41 | 4.088695011 | 101.285678 | Mallis Daerah Tapah |
| 6 | T005 | 24 | 4.088525375 | 101.2858289 | Mallis Daerah Tapah |
| 7 | T006 | 28 | 4.088284299 | 101.2858939 | Mallis Daerah Tapah |
| 8 | T007 | 45 | 4.090109981 | 101.2847246 | Mallis Daerah Tapah |
| 9 | T008 | 40 | 4.090506792 | 101.2846457 | Mallis Daerah Tapah |
| 10 | T009 | 42 | 4.090869961 | 101.2846636 | Mallis Daerah Tapah |
| 11 | T010 | 24 | 4.091259785 | 101.2846755 | Mallis Daerah Tapah |
| 12 | T011 | 38 | 4.091469979 | 101.2846851 | Mallis Daerah Tapah |
| 13 | T012 | 38 | 4.091827442 | 101.284689 | Mallis Daerah Tapah |
| 14 | T013 | 46 | 4.092182013 | 101.2846851 | Mallis Daerah Tapah |
| 15 | T014 | 36 | 4.092592101 | 101.284631 | Mallis Daerah Tapah |
| 16 | T015 | 38 | 4.092624792 | 101.2849542 | Mallis Daerah Tapah |
| 17 | T016 | 37 | 4.092633009 | 101.2853053 | Mallis Daerah Tapah |
| 18 | T017 | 37 | 4.092631227 | 101.2856402 | Mallis Daerah Tapah |
| 19 | T018 | 42 | 4.092969206 | 101.2846009 | Mallis Daerah Tapah |
| 20 | T019 | 37 | 4.093313314 | 101.2846285 | Mallis Daerah Tapah |
| 21 | T020 | 40 | 4.093673962 | 101.2846651 | Mallis Daerah Tapah |
| 22 | T021 | 37 | 4.094001874 | 101.2846178 | Mallis Daerah Tapah |
| 23 | T022 | 41 | 4.094345434 | 101.2844649 | Mallis Daerah Tapah |
| 24 | T023 | 23 | 4.094531549 | 101.2843663 | Mallis Daerah Tapah |
| 25 | T024 | 44 | 4.094920453 | 101.2844631 | JKR Persekutuan |
| 26 | T025 | 42 | 4.095283027 | 101.2845587 | JKR Persekutuan |
| 27 | T026 | 45 | 4.095694613 | 101.284664 | JKR Persekutuan |
| 28 | T027 | 26 | 4.095922511 | 101.2847244 | JKR Persekutuan |
| 29 | T028 | 40 | 4.096272034 | 101.2848084 | JKR Persekutuan |
| 30 | T029 | 41 | 4.096641547 | 101.2849225 | JKR Persekutuan |
| 31 | T030 | 35 | 4.096968 | 101.285003 | JKR Persekutuan |
| 32 | T031 | 42 | 4.096841345 | 101.2853542 | Mallis Daerah Tapah |
| 33 | T032 | 41 | 4.096757876 | 101.2857173 | Mallis Daerah Tapah |
| 34 | T033 | 39 | 4.096658395 | 101.2860689 | Mallis Daerah Tapah |
| 35 | T034 | 34 | 4.096576391 | 101.2864136 | Mallis Daerah Tapah |
| 36 | T035 | 46 | 4.096468362 | 101.2868144 | Mallis Daerah Tapah |
| 37 | T036 | 23 | 4.096255595 | 101.2868535 | Mallis Daerah Tapah |
| 38 | T037 | 37 | 4.096196338 | 101.2871876 | Mallis Daerah Tapah |
| 39 | T038 | 39 | 4.096130509 | 101.287528 | Mallis Daerah Tapah |
| 40 | T039 | 41 | 4.096049703 | 101.2878944 | Mallis Daerah Tapah |

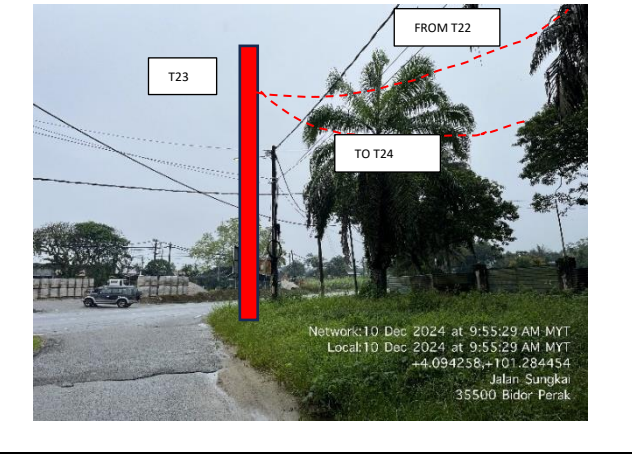
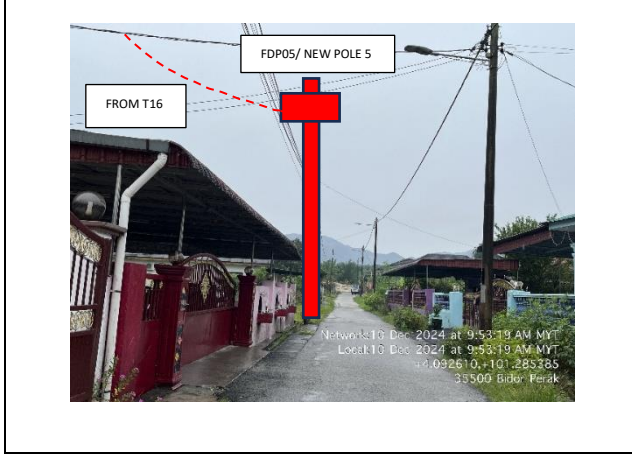
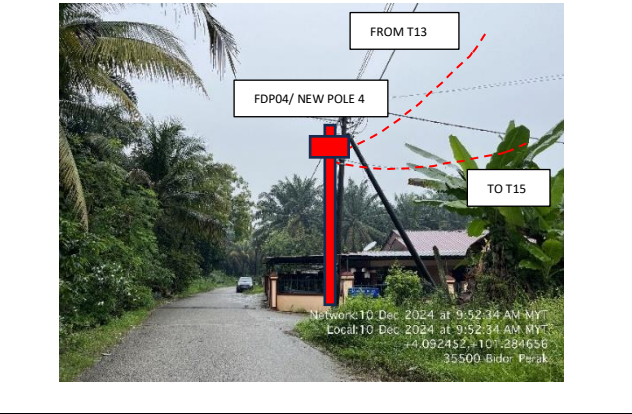
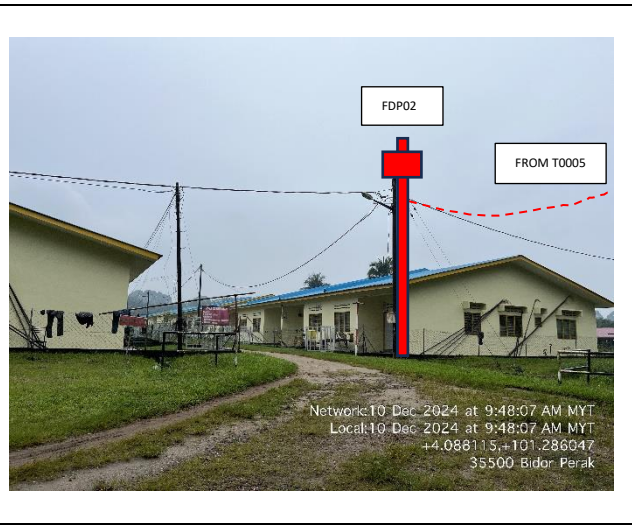
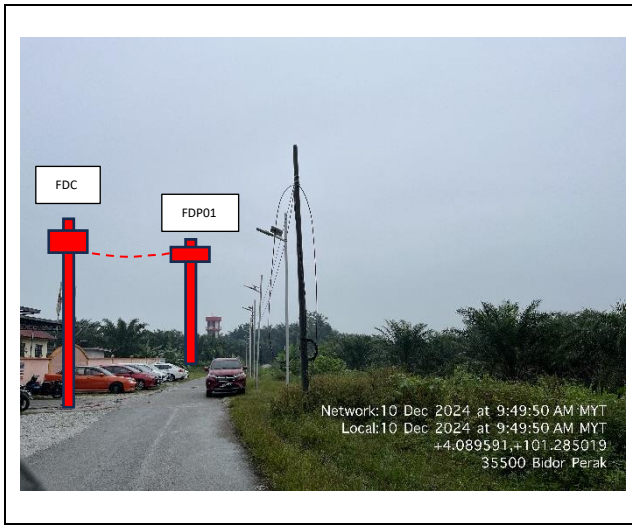


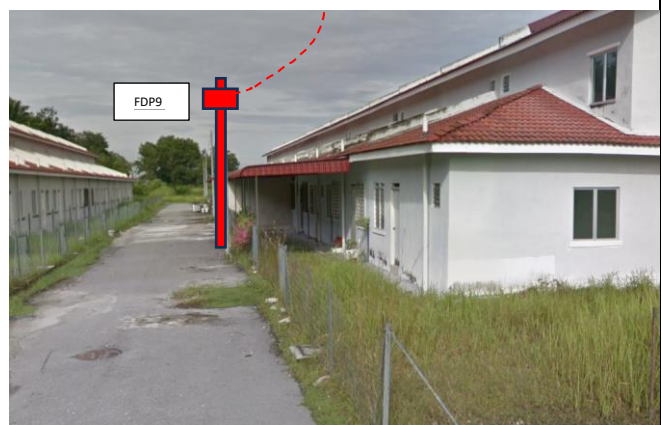
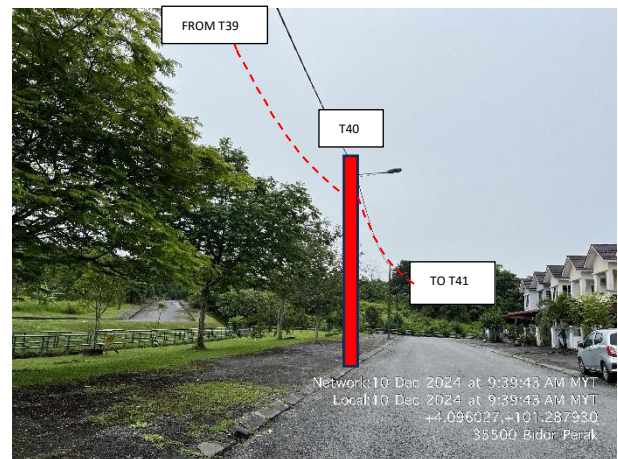
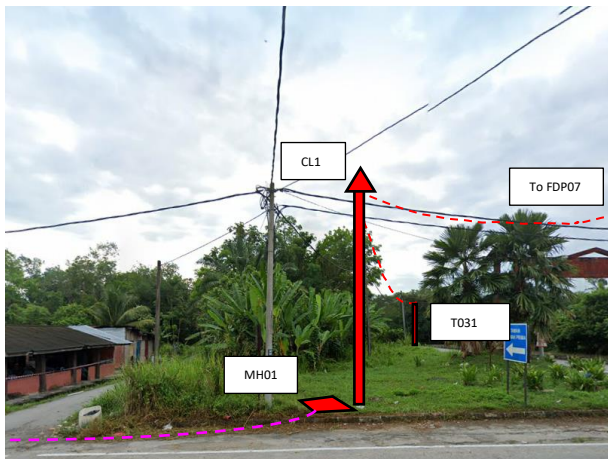
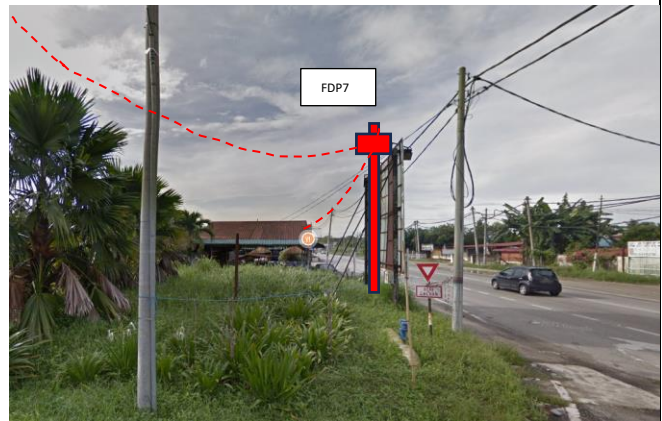
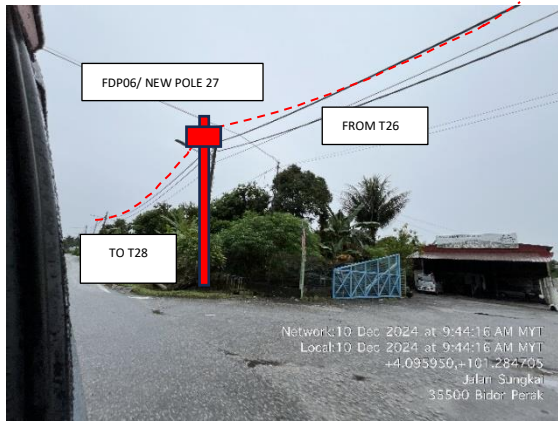
PROJEK PENYEDIAAN DAN PENYELENGGARAAN POINT OF PRESENCE (POP)
 FASA 2: HAB INFRASTRUKTUR GENTIAN OPTIK BERHAMPIRAN DENGAN
 SEKOLAH, KAWASAN PERINDUSTRIAN, PREMIS KERAJAAN DAN KOMUNITI
 SEKITARNYA OLEH KEMENTERIAN KOMUNIKASI MALAYSIA - ZON UTARA
 (KKMM.400-11/17/132(1))

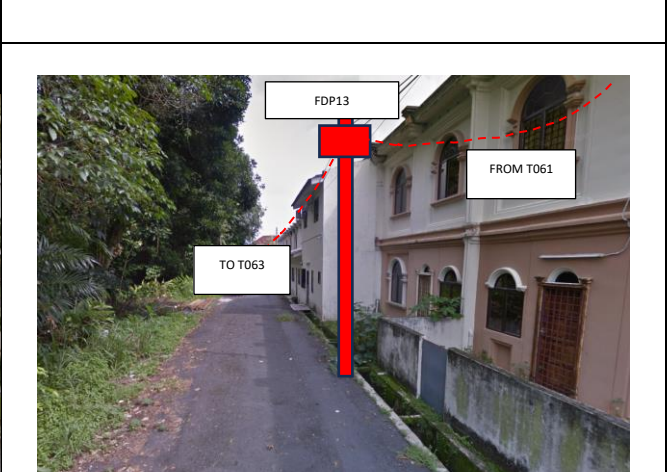
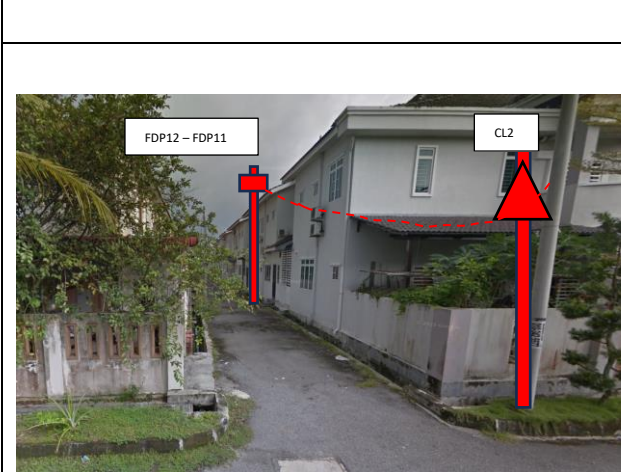
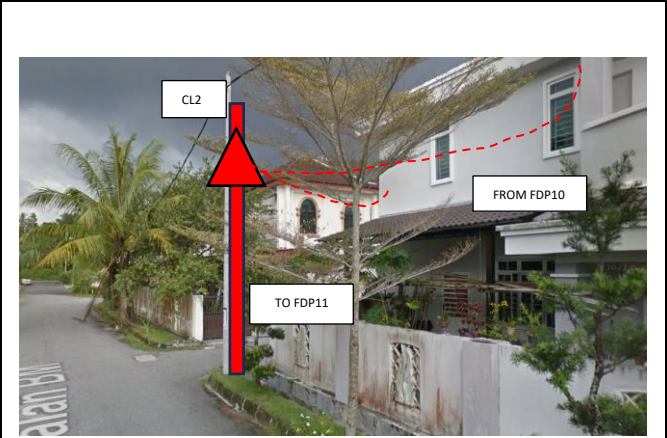
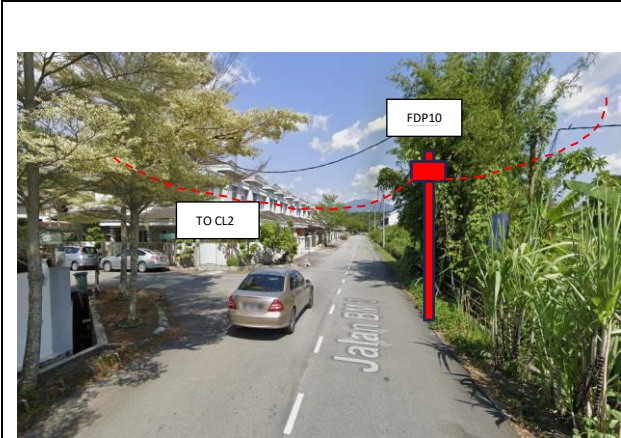
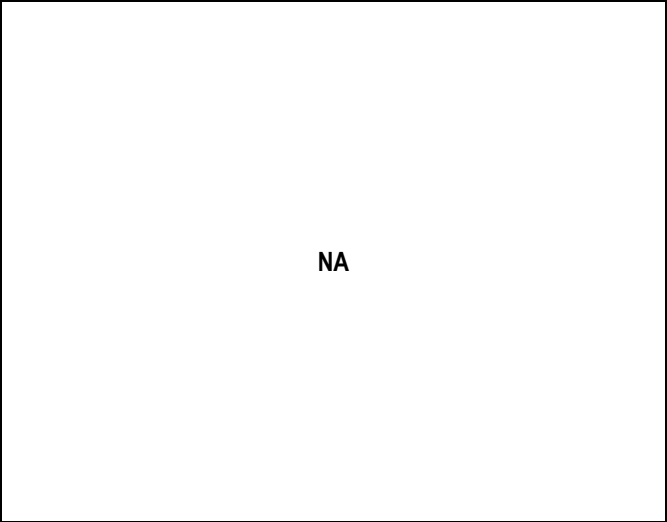
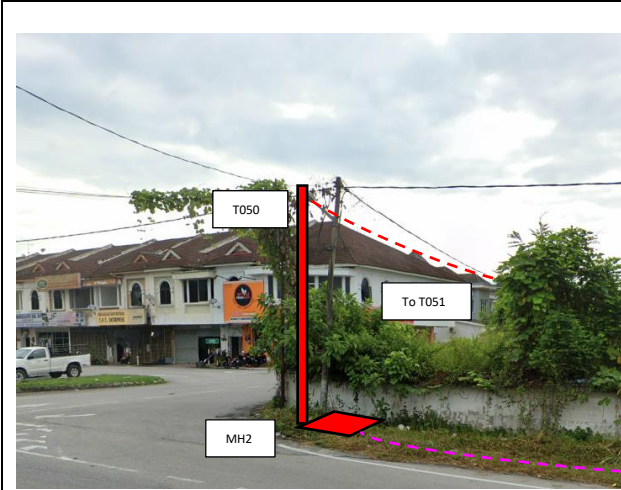


| | | | | | |
|----|------|----|-------------|-------------|---------------------|
| 41 | T040 | 34 | 4.096005358 | 101.2881908 | Mallis Daerah Tapah |
| 42 | T041 | 28 | 4.095959899 | 101.2884577 | Mallis Daerah Tapah |
| 43 | T042 | 26 | 4.095910634 | 101.288688 | Mallis Daerah Tapah |
| 44 | T043 | 39 | 4.095554748 | 101.2886161 | Mallis Daerah Tapah |
| 45 | T044 | 27 | 4.095561429 | 101.2883848 | Mallis Daerah Tapah |
| 46 | T045 | 26 | 4.095607049 | 101.288159 | Mallis Daerah Tapah |
| 47 | T046 | 37 | 4.095217797 | 101.2885545 | Mallis Daerah Tapah |
| 48 | T047 | 34 | 4.094895509 | 101.2884845 | Mallis Daerah Tapah |
| 49 | T048 | 25 | 4.094928897 | 101.2882594 | Mallis Daerah Tapah |
| 50 | T049 | 26 | 4.094960748 | 101.2880313 | Mallis Daerah Tapah |
| 51 | T050 | 38 | 4.09905288 | 101.2855217 | JKR Persekutuan |
| 52 | T051 | 37 | 4.09901706 | 101.2858693 | Mallis Daerah Tapah |
| 53 | T052 | 35 | 4.098920038 | 101.2861908 | Mallis Daerah Tapah |
| 54 | T053 | 26 | 4.099229 | 101.286282 | Mallis Daerah Tapah |
| 55 | T054 | 31 | 4.09917552 | 101.2865066 | Mallis Daerah Tapah |
| 56 | T056 | 35 | 4.099010698 | 101.2870953 | Mallis Daerah Tapah |
| 57 | T057 | 34 | 4.098926039 | 101.287384 | Mallis Daerah Tapah |
| 58 | T058 | 29 | 4.099473379 | 101.2863264 | Mallis Daerah Tapah |
| 59 | T059 | 37 | 4.099804081 | 101.2864084 | Mallis Daerah Tapah |
| 60 | T060 | 36 | 4.100120173 | 101.286503 | Mallis Daerah Tapah |
| 61 | T061 | 31 | 4.100042137 | 101.2867765 | Mallis Daerah Tapah |
| 62 | T062 | 28 | 4.09995268 | 101.2870121 | Mallis Daerah Tapah |
| 63 | T063 | 23 | 4.099906308 | 101.2872168 | Mallis Daerah Tapah |
| 64 | T064 | 21 | 4.099847163 | 101.2874092 | Mallis Daerah Tapah |
| 65 | T065 | 26 | 4.099655009 | 101.2875529 | Mallis Daerah Tapah |
| 66 | T066 | 25 | 4.099427091 | 101.2875315 | Mallis Daerah Tapah |
| 67 | T067 | 24 | 4.099223153 | 101.2875064 | Mallis Daerah Tapah |
| 68 | T068 | 32 | 4.099150307 | 101.287784 | Mallis Daerah Tapah |
| 69 | T069 | 30 | 4.09942621 | 101.2878173 | Mallis Daerah Tapah |
| 70 | T070 | 29 | 4.099689445 | 101.2878714 | Mallis Daerah Tapah |
| 71 | T071 | 33 | 4.099608684 | 101.2881539 | Mallis Daerah Tapah |
| 72 | T072 | 14 | 4.099731539 | 101.2881951 | Mallis Daerah Tapah |
| 73 | T073 | 35 | 4.099634331 | 101.2884948 | Mallis Daerah Tapah |
| 74 | T074 | 31 | 4.099555981 | 101.2887704 | Mallis Daerah Tapah |
| 75 | T075 | 27 | 4.09948823 | 101.2890069 | Mallis Daerah Tapah |
| 76 | T076 | 32 | 4.099199635 | 101.2889205 | Mallis Daerah Tapah |
| 77 | T077 | 32 | 4.09890716 | 101.288838 | Mallis Daerah Tapah |
| 78 | T078 | 23 | 4.098969506 | 101.2886385 | Mallis Daerah Tapah |
| 79 | T079 | 24 | 4.099030205 | 101.2884273 | Mallis Daerah Tapah |

5.0 SITE PHOTOS – PROPOSED NEW POLE

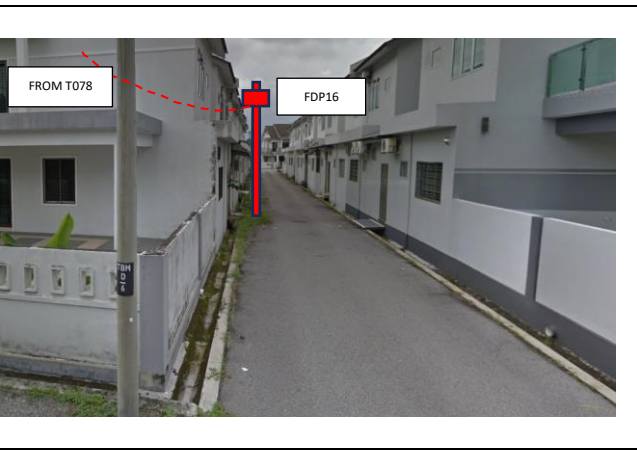
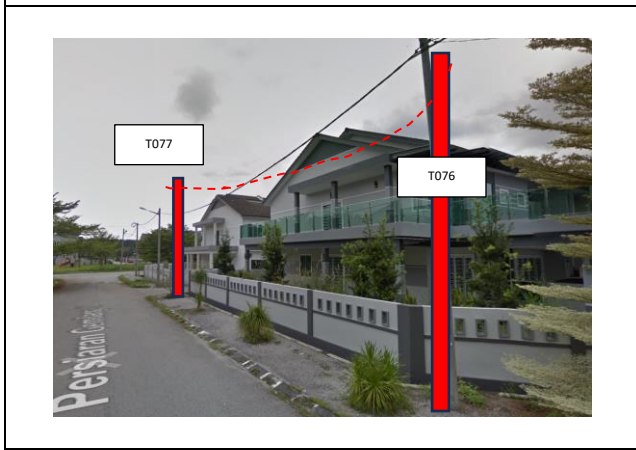
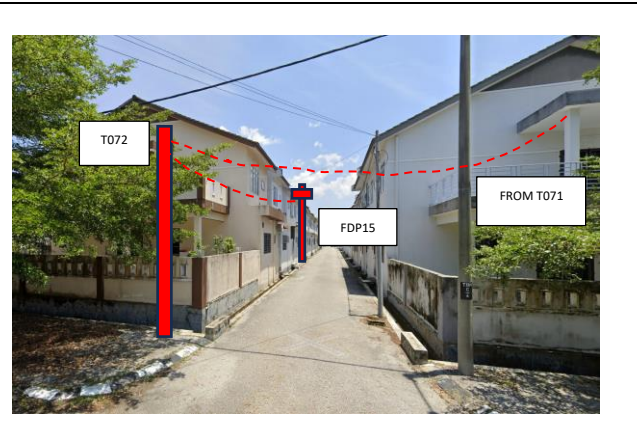
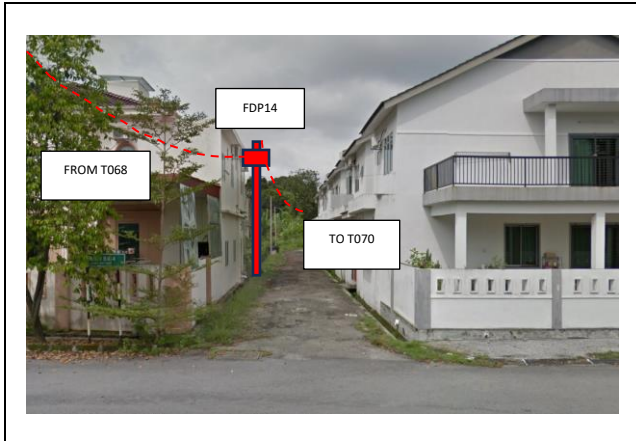











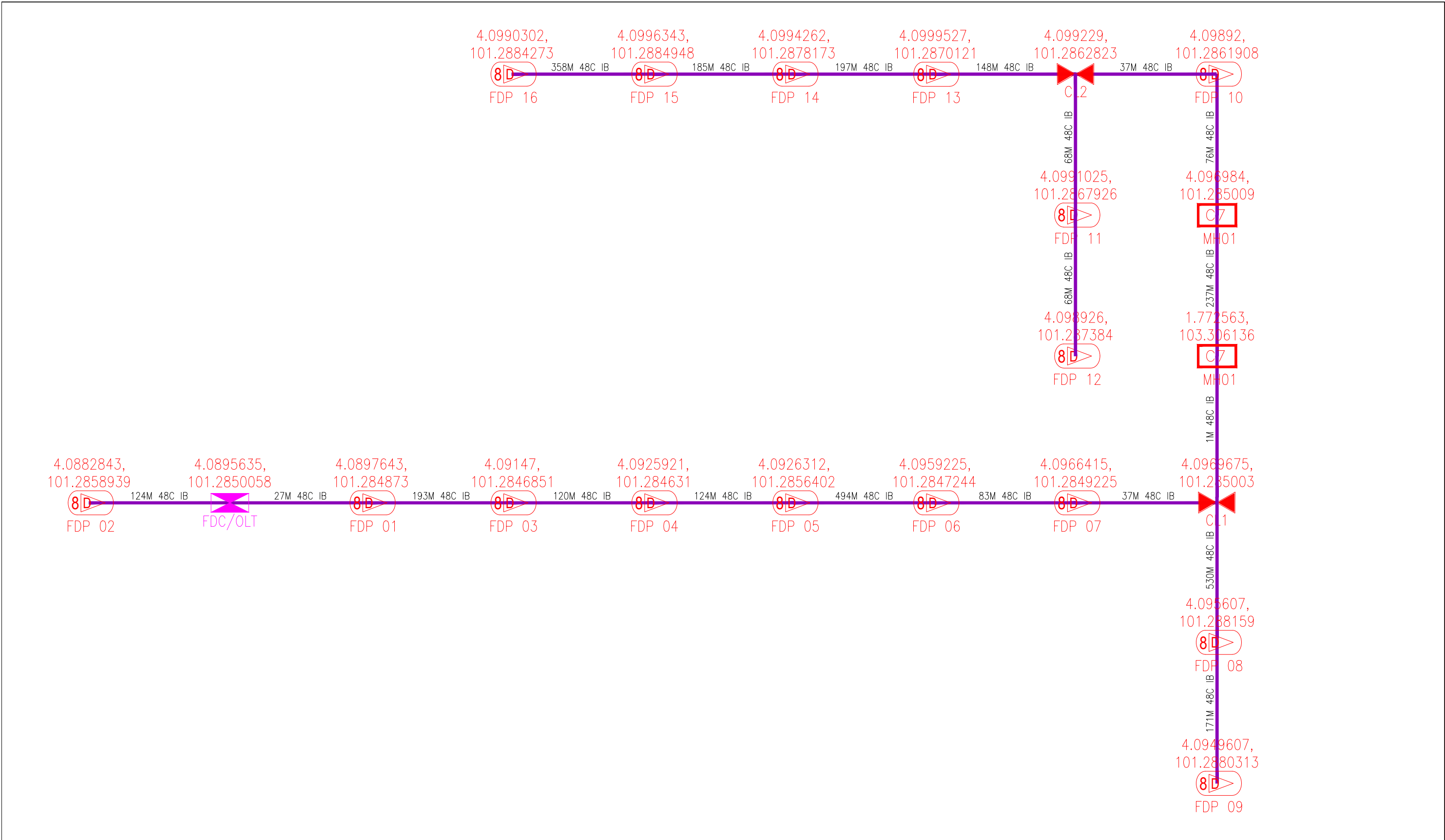
PROJEK PENYEDIAAN DAN PENYELENGGARAAN POINT OF PRESENCE (POP)
FASA 2: HAB INFRASTRUKTUR GENTIAN OPTIK BERHAMPIRAN DENGAN
SEKOLAH, KAWASAN PERINDUSTRIAN, PREMIS KERAJAAN DAN KOMUNITI
SEKITARNYA OLEH KEMENTERIAN KOMUNIKASI MALAYSIA - ZON UTARA
(KKMM.400-11/17/132(1))



| | | |
|--|--|--|
|   | <p>PROJEK PENYEDIAAN DAN PENYELENGGARAAN POINT OF PRESENCE (POP) FASA 2: HAB INFRASTRUKTUR GENTIAN OPTIK BERHAMPIRAN DENGAN SEKOLAH, KAWASAN PERINDUSTRIAN, PREMIS KERAJAAN DAN KOMUNITI SEKITARNYA OLEH KEMENTERIAN KOMUNIKASI MALAYSIA - ZON UTARA (KKMM.400-11/17/132(1))</p> |  <small>A member of OCK Group Berhad</small> |
|--|--|--|

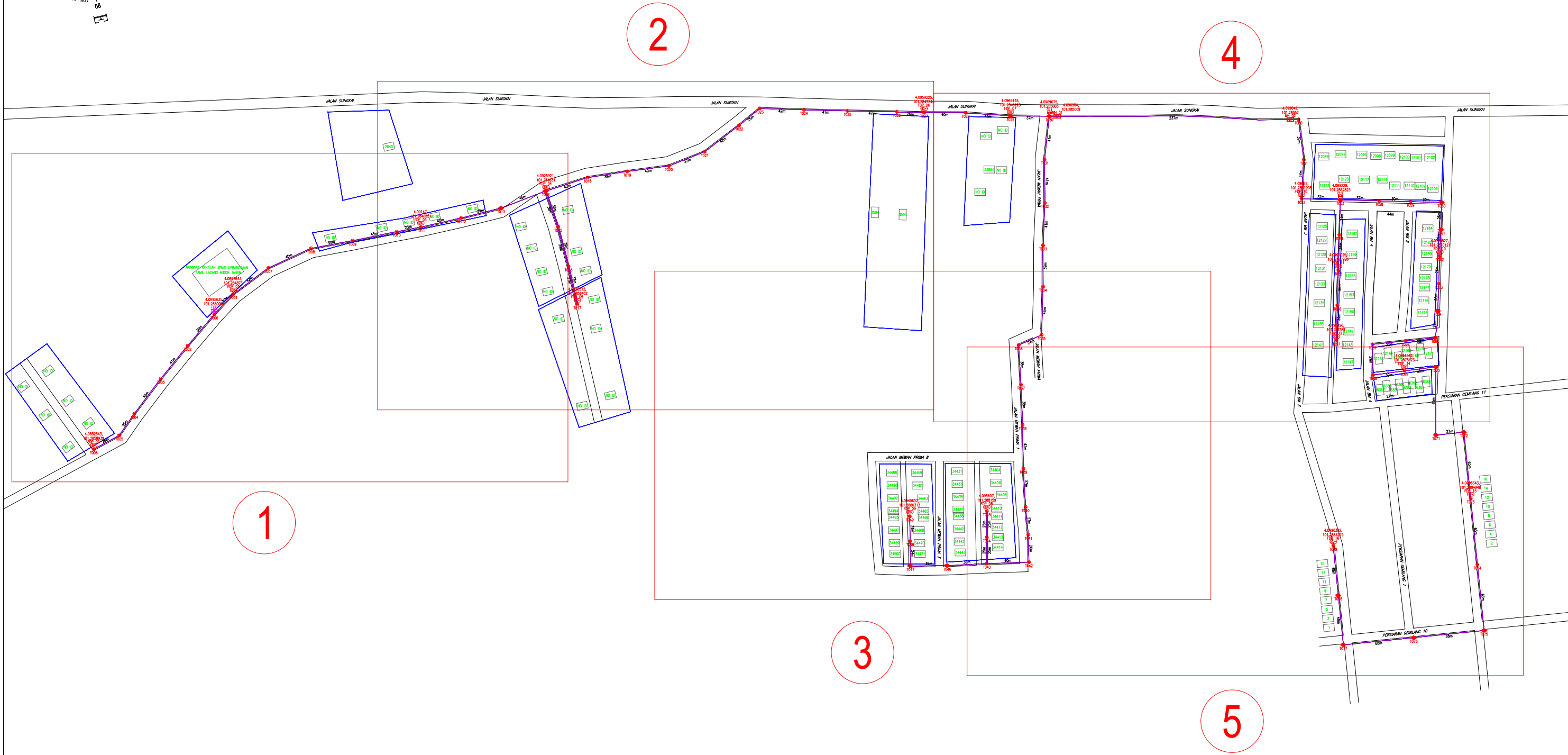
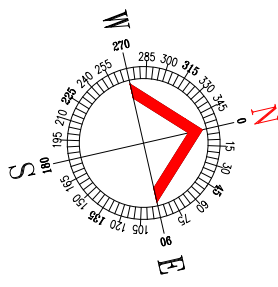
6.0 3RD PARTIES DEPENDENCIES

| NO | LOCAL COUNCIL / AUTHORITY | REMARK |
|----|---------------------------|--------|
| 1 | JKR PERSEKUTUAN | NA |
| 2 | MAJLIS DAERAH TAPAH | NA |



| LEGEND | NOS. | NOS. | NOS. | NOS. | NOS. | NOS. | NOS. | NOS. |
|----------|-------------------------------|---------------------|------|-------------------|---------|-----------------------------|--------------------------|-----------------------|
| 12C FOC | Installed 1:4 splitter in FDC | Installed Pole (9m) | C7 | New Manhole(JRC7) | TS / TB | Tension Small / Tension Big | MH1 | MH NO. |
| 24C FOC | FDP with (1:8) splitter | Installed Riser | # | House Number | TKS-1 | Existing Manhole | TKS-1 | Existing TNB Pole NO. |
| 48C FOC | Closure | Suspension Big | SB | Existing TNB Pole | C01 | Closure NO. | P001 | New Pole NO. |
| 96C FOC | New Manhole (PIT) | Suspension Small | SS | LOOP | FDP1 | FDP NO. | (A) SEE A-A in this page | (A) |
| 144C FOC | Installed Pole (7.5M) | FDC | Loop | FDP Boundary | FDC | FDC NO. | (A) SEE SHEET XXX | (A) |

| | | | | | |
|--|--------------------------------|--|---|---|---|
| KEY PLAN : POP2 PROJECT IN PERAK | MAIN CONTRACTOR | SUB-CONTRACTOR : A member of FOCK Group Berhad | PROJECT TITLE : CONTRACTOR FOR SURVEY, TECHNICAL PROPOSAL AND WAYLEAVE, & PERMIT APPROVAL -POP2 PROJECT | DRAWING TITLE: SINGLE LINE DRAWING ABD0082 SEKOLAH JENIS KEBANGSAAN (TAMIL) LADANG BIDOR TAHAN | Design By : FITRI Date : 17/12/2024 |
| | | | | PROJECT PHASE: POP2 | Drawn By : FITRI Scale : N.T.S Checked By : AMSYAR Job Number : JOB_NUMBER |
| | | | | DRAWING NUMBER : ABD0082-SLD-01 | Sheet : 1/1 |
| | | | | THIS PRINT AND ITS COPYRIGHT ARE THE PROPERTY OF ALLO TECHNOLOGY SDN BHD | Size : A3 |

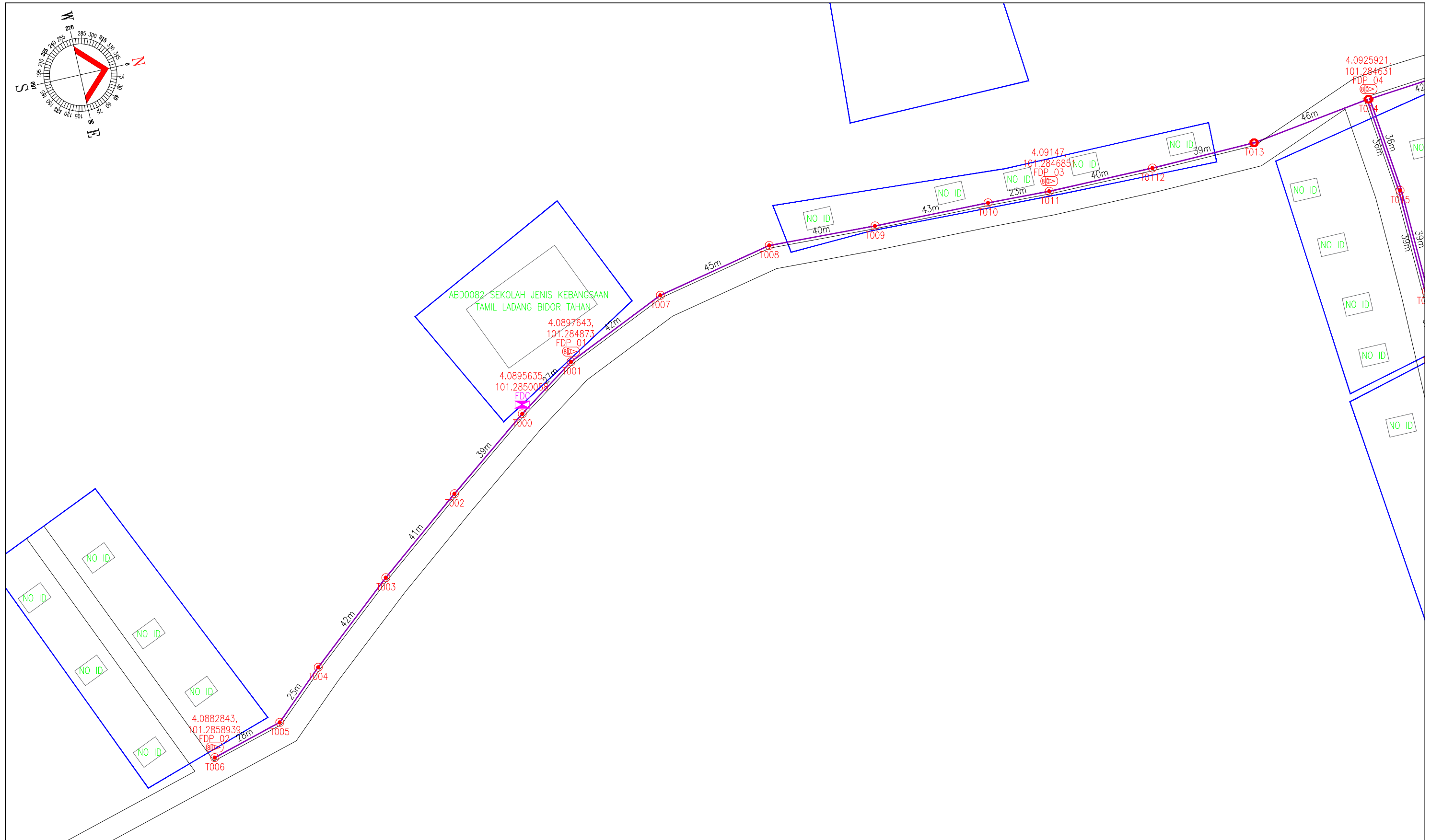
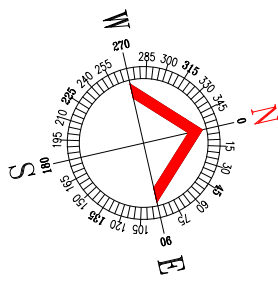


| | | | | | | | | |
|----------|-------------------------------|---------------------|------|-------------------|---------|-----------------------------|----------------------|-----------------------|
| LEGEND | NOS. | NOS. | NOS. | NOS. | NOS. | NOS. | NOS. | NOS. |
| 12C FOC | Installed 1:4 splitter in FDC | Installed Pole (9m) | C7 | New Manhole(JRC7) | TS / TB | Tension Small / Tension Big | MH1 | MH NO. |
| 24C FOC | FDP with (1:8) splitter | Installed Riser | # | House Number | TKS-1 | Existing Manhole | TKS-1 | Existing TNB Pole NO. |
| 48C FOC | Closure | Suspension Big | ● | Existing TNB Pole | C01 | Closure NO. | P001 | New Pole NO. |
| 96C FOC | New Manhole (PIT) | Suspension Small | ○ | LOOP | FDP1 | FDP NO. | SEE A-A in this page | SEE SHEET XXX |
| 144C FOC | Installed Pole (7.5M) | FDC | ○ | FDP Boundary | FDC | FDC NO. | SEE SHEET XXX | |

ACTUAL HOMEPASS :

| | | | | | | |
|--|---|---|--|---|---|--|
| KEY PLAN : POP2 PROJECT IN PERAK | MAIN CONTRACTOR PRIVASAT | SUB-CONTRACTOR : A member ofFOCK Group Berhad | PROJECT TITLE : CONTRACTOR FOR SURVEY, TECHNICAL PROPOSAL AND WAYLEAVE,& PERMIT APPROVAL -POP2 PROJECT | DRAWING TITLE: CONSTRUCTION DRAWING ABD0082 SEKOLAH JENIS KEBANGSAAN (TAMIL) LADANG BIDOR TAHAN | Design By : FITRI Drawn By : FITRI Checked By : AMSYAR | Date : 17/12/2024 Scale : N.T.S Job Number : JOB_NUMBER |
| | | | | PROJECT PHASE: POP2 | DRAWING NUMBER : ABD0082-CD-01 | Sheet : INDEX Size : A3 |

THIS PRINT AND ITS COPYRIGHT ARE THE PROPERTY OF ALLO TECHNOLOGY SDN BHD



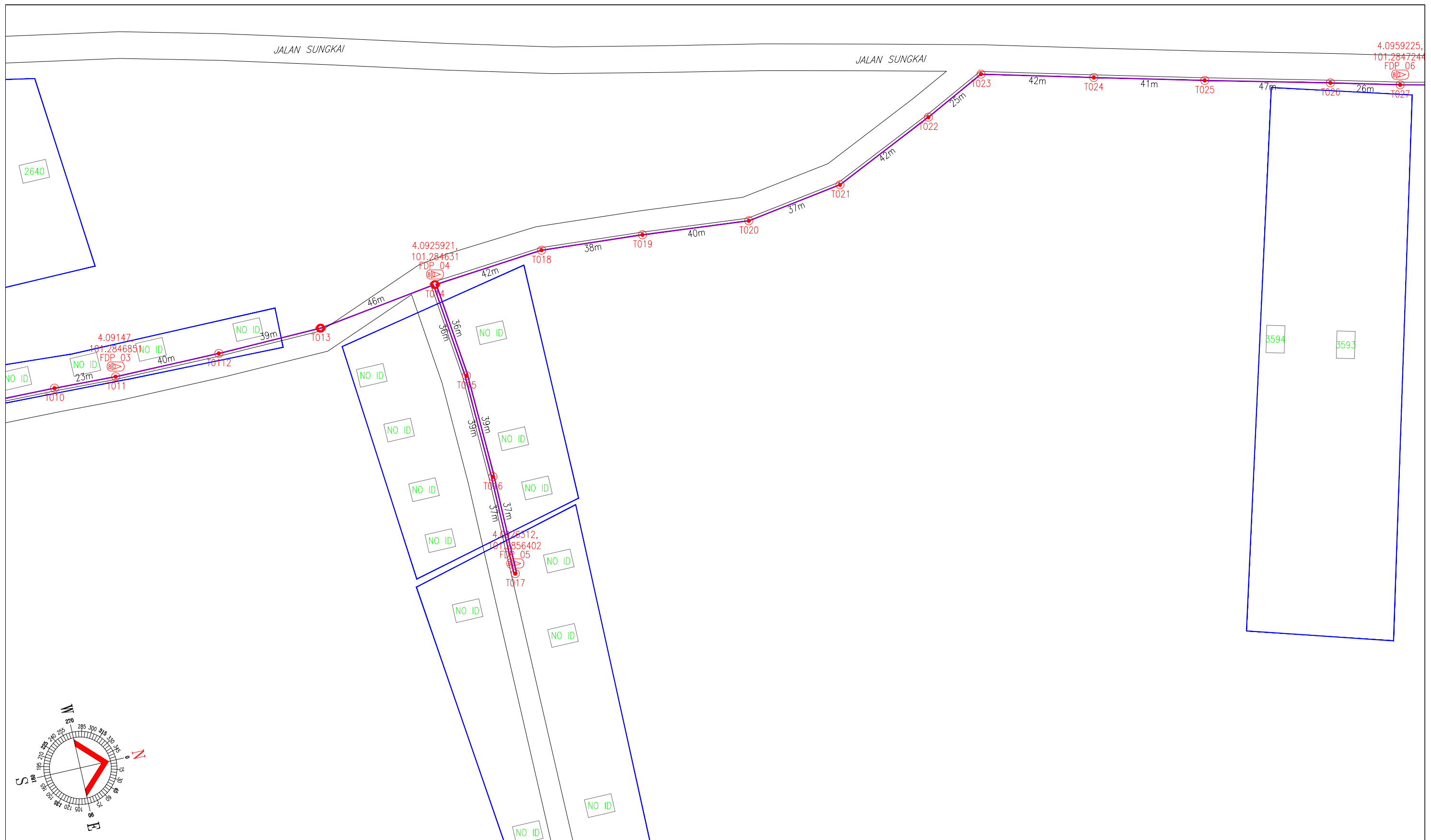
| LEGEND | NOS. | NOS. | NOS. | NOS. | NOS. | NOS. | NOS. | |
|----------|-------------------------------|---------------------|------|-------------------|---------|-----------------------------|-------|-----------------------|
| 12C FOC | Installed 1:4 splitter in FDC | Installed Pole (9m) | C7 | New Manhole(JRC7) | TS / TB | Tension Small / Tension Big | MH1 | MH NO. |
| 24C FOC | FDP with (1:8) splitter | Installed Riser | # | House Number | TKS-1 | Existing Manhole | TKS-1 | Existing TNB Pole NO. |
| 48C FOC | Closure | Suspension Big | ● | Existing TNB Pole | C01 | Closure NO. | P001 | New Pole NO. |
| 96C FOC | New Manhole (PIT) | Suspension Small | ○ | LOOP | FDP1 | FDP NO. | (A) | SEE A-A in this page |
| 144C FOC | Installed Pole (7.5M) | FDC | ○ | FDP Boundary | FDC | FDC NO. | (A) | SEE SHEET XXX |

ACTUAL HOMEPASS :

| | | | | | | |
|--|---|--|---|--|---|--|
| KEY PLAN : POP2 PROJECT IN PERAK | MAIN CONTRACTOR PRIVASAT | SUB-CONTRACTOR : A member of FOCK Group Berhad | PROJECT TITLE : CONTRACTOR FOR SURVEY, TECHNICAL PROPOSAL AND WAYLEAVE, & PERMIT APPROVAL -POP2 PROJECT | DRAWING TITLE: CONSTRUCTION DRAWING ABD0082 SEKOLAH JENIS KEBANGSAAN (TAMIL) LADANG BIDOR TAHAN | Design By : FITRI Drawn By : FITRI Checked By : AMSYAR | Date : 17/12/2024 Scale : N.T.S Job Number : JOB_NUMBER |
| | | | | PROJECT PHASE: POP2 | DRAWING NUMBER : ABD0082-CD-01 | Sheet : 01/05 |

THIS PRINT AND ITS COPYRIGHT ARE THE PROPERTY OF ALLO TECHNOLOGY SDN BHD

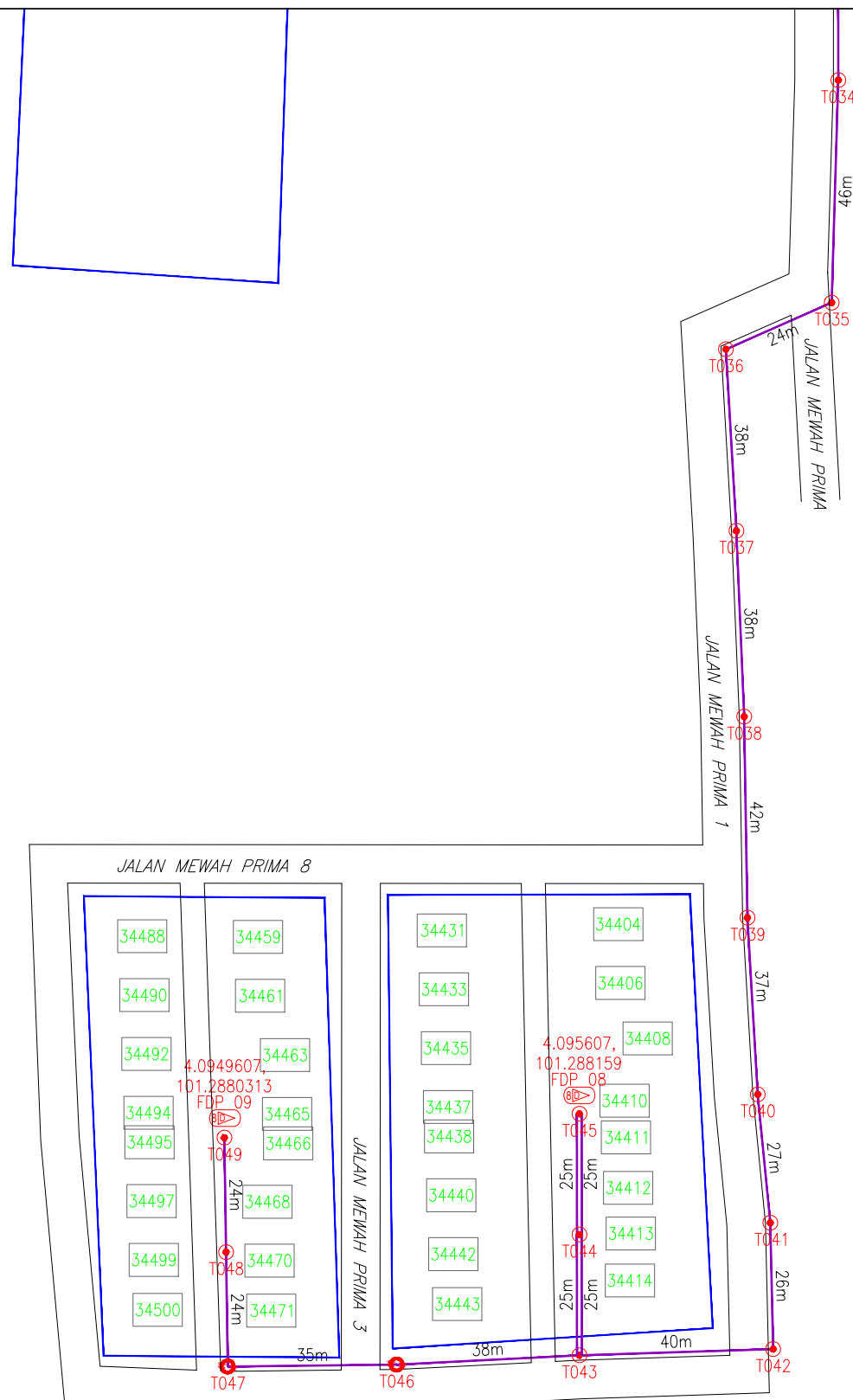
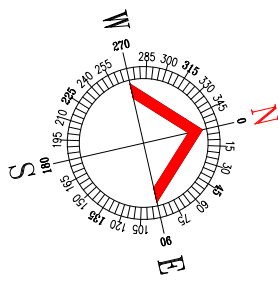
Size : A3



| LEGEND | NOS. | NOS. | NOS. | NOS. | NOS. | NOS. | NOS. | |
|----------|-------------------------------|---------------------|------|-------------------|---------|-----------------------------|-------|-----------------------|
| 12C FOC | Installed 1:4 splitter in FDC | Installed Pole (9m) | C7 | New Manhole(JRC7) | TS / TB | Tension Small / Tension Big | MH1 | MH NO. |
| 24C FOC | FDP with (1:8) splitter | Installed Riser | # | House Number | TKS-1 | Existing Manhole | TKS-1 | Existing TNB Pole NO. |
| 48C FOC | Closure | Suspension Big | ● | Existing TNB Pole | C01 | Closure NO. | P001 | New Pole NO. |
| 96C FOC | New Manhole (PIT) | Suspension Small | ○ | LOOP | FDP1 | FDP NO. | (A) | SEE A-A in this page |
| 144C FOC | Installed Pole (7.5M) | FDC | ○ | FDP Boundary | FDC | FDC NO. | (A) | SEE SHEET XXX |

ACTUAL HOMEPASS :

| | | | | | | |
|--|---|--|---|--|---|--------------------------------|
| KEY PLAN : POP2 PROJECT IN PERAK | MAIN CONTRACTOR PRIVASAT | SUB-CONTRACTOR : A member of FOCK Group Berhad | PROJECT TITLE : CONTRACTOR FOR SURVEY, TECHNICAL PROPOSAL AND WAYLEAVE, & PERMIT APPROVAL -POP2 PROJECT | DRAWING TITLE: CONSTRUCTION DRAWING ABD0082 SEKOLAH JENIS KEBANGSAAN (TAMIL) LADANG BIDOR TAHAN PROJECT PHASE: POP2 | Design By : FITRI | Date : 17/12/2024 |
| | | | | | Drawn By : FITRI | Scale : N.T.S |
| | | | | | Checked By : AMSYAR | Job Number : JOB_NUMBER |
| | | | | | DRAWING NUMBER : ABD0082-CD-01 | Sheet : 02/05 |
| | | | | | THIS PRINT AND ITS COPYRIGHT ARE THE PROPERTY OF ALLO TECHNOLOGY SDN BHD | Size : A3 |

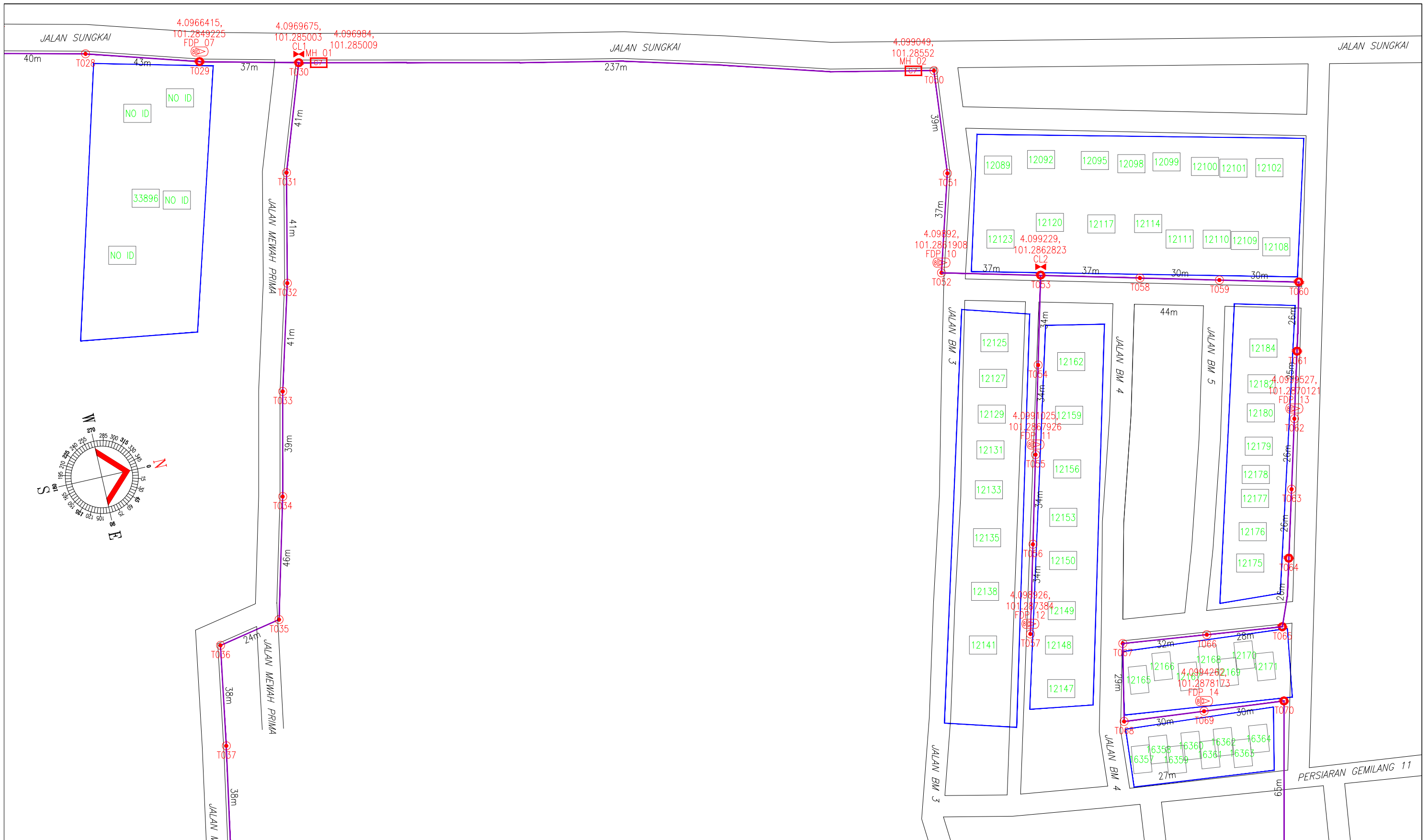


| LEGEND | NOS. | NOS. | NOS. | NOS. | NOS. | NOS. | NOS. | NOS. | |
|--------|----------|------|-----------------------|------|-------------------|------|-----------------------------|------|-----------------------|
| | 12C FOC | | Installed Pole (9m) | | New Manhole(JRC7) | | Tension Small / Tension Big | | MH NO. |
| | 24C FOC | | Installed Riser | | House Number | | Existing Manhole | | Existing TNB Pole NO. |
| | 48C FOC | | Closure | | Suspension Big | | Closure NO. | | New Pole NO. |
| | 96C FOC | | New Manhole (PIT) | | Suspension Small | | FDP NO. | | SEE A-A in this page |
| | 144C FOC | | Installed Pole (7.5M) | | FDC | | FDC NO. | | SEE SHEET XXX |

ACTUAL HOMEPASS :

| | | | | | | |
|--|--------------------------------|--|---|---|---|--|
| KEY PLAN : POP2 PROJECT IN PERAK | MAIN CONTRACTOR | SUB-CONTRACTOR : A member of OOCK Group Berhad | PROJECT TITLE : CONTRACTOR FOR SURVEY, TECHNICAL PROPOSAL AND WAYLEAVE, & PERMIT APPROVAL -POP2 PROJECT | DRAWING TITLE: CONSTRUCTION DRAWING ABD0082 SEKOLAH JENIS KEBANGSAAN (TAMIL) LADANG BIDOR TAHAN | Design By : FITRI Drawn By : FITRI Checked By : AMSYAR | Date : 17/12/2024 Scale : N.T.S Job Number : JOB_NUMBER |
| | | | | PROJECT PHASE: POP2 | DRAWING NUMBER : ABD0082-CD-01 | Sheet : 03/05 Size : A3 |

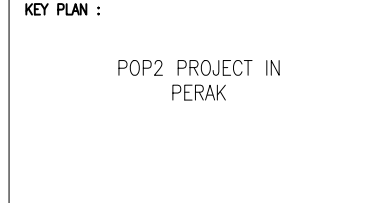
THIS PRINT AND ITS COPYRIGHT ARE THE PROPERTY OF ALLO TECHNOLOGY SDN BHD



ACTUAL HOMEPASS :

| | | | | | | | | |
|----------|-------------------------------|---------------------|------|-------------------|---------|-----------------------------|-------|--------------------------|
| LEGEND | NOS. | NOS. | NOS. | NOS. | NOS. | NOS. | NOS. | NOS. |
| 12C FOC | Installed 1:4 splitter in FDC | Installed Pole (9m) | C7 | New Manhole(JRC7) | TS / TB | Tension Small / Tension Big | MH1 | MH NO. |
| 24C FOC | FDP with (1:8) splitter | Installed Riser | # | House Number | TKS-1 | Existing Manhole | TKS-1 | Existing TNB Pole NO. |
| 48C FOC | Closure | Suspension Big | SB | Existing TNB Pole | C01 | Closure NO. | P001 | New Pole NO. |
| 96C FOC | New Manhole (PIT) | Suspension Small | SS | LOOP | FDP1 | FDP NO. | (A) | SEE A-A in this page (A) |
| 144C FOC | Installed Pole (7.5M) | FDC | PS | FDP Boundary | FDC | FDC NO. | (A) | SEE SHEET XXX (A) |

KEY PLAN :
POP2 PROJECT IN PERAK



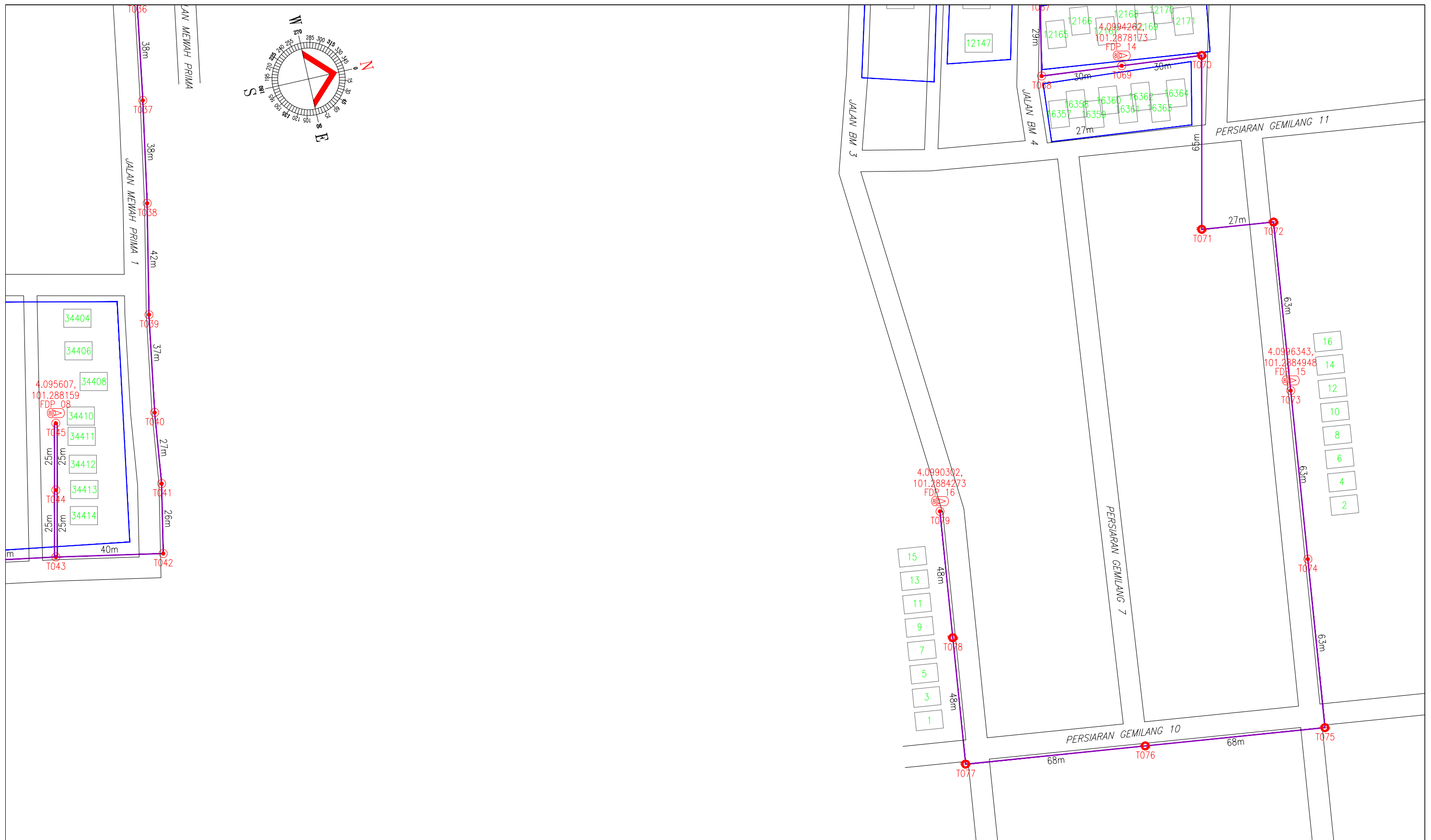
MAIN CONTRACTOR :
APEX COMMUNICATIONS SDN BHD
PRIVASAT

SUB-CONTRACTOR :
STEADCOM
A member of FOCK Group Berhad

PROJECT TITLE :
CONTRACTOR FOR SURVEY, TECHNICAL PROPOSAL AND WAYLEAVE, & PERMIT APPROVAL -POP2 PROJECT

DRAWING TITLE:
CONSTRUCTION DRAWING ABD0082 SEKOLAH JENIS KEBANGSAAN (TAMIL) LADANG BIDOR TAHAN
PROJECT PHASE:
POP2

Design By : FITRI
Date : 17/12/2024
Drawn By : FITRI
Scale : N.T.S
Checked By : AMSYAR
Job Number : JOB_NUMBER
DRAWING NUMBER : ABD0082-CD-01
Sheet : 04/05
THIS PRINT AND ITS COPYRIGHT ARE THE PROPERTY OF ALLO TECHNOLOGY SDN BHD
Size : A3



| LEGEND | NOS. | NOS. | NOS. | NOS. | NOS. | NOS. | NOS. | NOS. | |
|--------|----------|------|-----------------------|------|-------------------|------|-----------------------------|------|-----------------------|
| | 12C FOC | | Installed Pole (9m) | | New Manhole(JRC7) | | Tension Small / Tension Big | | MH NO. |
| | 24C FOC | | Installed Riser | | House Number | | Existing Manhole | | Existing TNB Pole NO. |
| | 48C FOC | | Closure | | Suspension Big | | Closure NO. | | New Pole NO. |
| | 96C FOC | | New Manhole (PIT) | | Suspension Small | | FDP NO. | | SEE SHEET XXX |
| | 144C FOC | | Installed Pole (7.5M) | | FDC | | FDC NO. | | SEE SHEET XXX |

ACTUAL HOMEPASS :

| | | | | | | |
|--|---|--|---|---|---|--|
| KEY PLAN : POP2 PROJECT IN PERAK | MAIN CONTRACTOR PRIVASAT | SUB-CONTRACTOR : A member of FOCK Group Berhad | PROJECT TITLE : CONTRACTOR FOR SURVEY, TECHNICAL PROPOSAL AND WAYLEAVE, & PERMIT APPROVAL -POP2 PROJECT | DRAWING TITLE: CONSTRUCTION DRAWING ABD0082 SEKOLAH JENIS KEBANGSAAN (TAMIL) LADANG BIDOR TAHAN | Design By : FITRI Drawn By : FITRI Checked By : AMSYAR | Date : 17/12/2024 Scale : N.T.S Job Number : JOB_NUMBER |
| | | | | PROJECT PHASE: POP2 | DRAWING NUMBER : ABD0082-CD-01 | Sheet : 05/05 Size : A3 |

THIS PRINT AND ITS COPYRIGHT ARE THE PROPERTY OF ALLO TECHNOLOGY SDN BHD