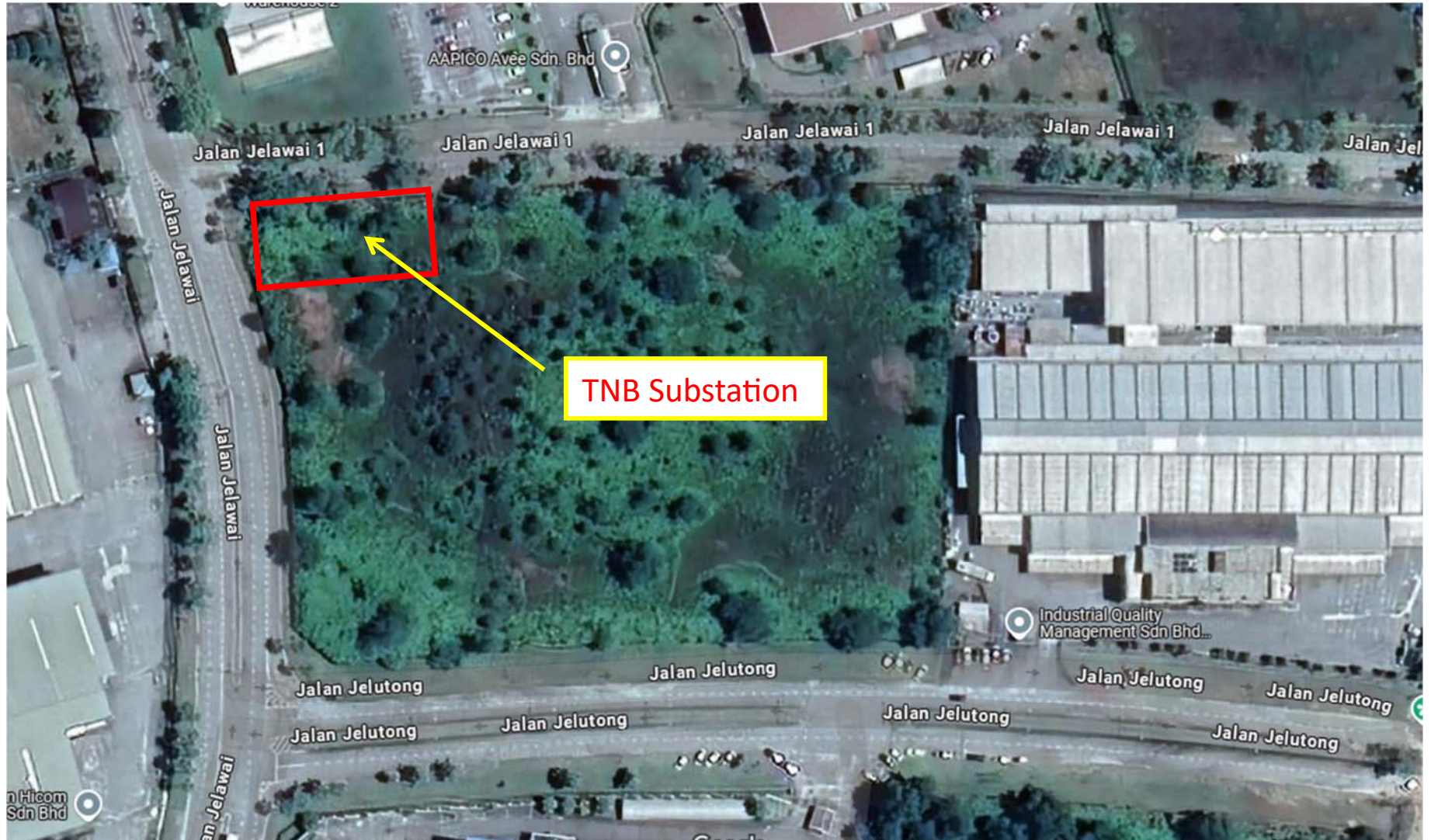


Site Location



TNB Sub-Station Location



Coordination Point

1: 3°44'09.3"N 101°31'42.7"E

2: 3°44'08.9"N 101°31'42.8"E

3: 3°44'08.6"N 101°31'43.0"E

4: 3°44'09.0"N 101°31'43.4"E

Method to Do

As per TNB given instruction at Letter, it is **Open Cut**