

# TECHNICAL PROPOSAL

## POP2 AEA7005 SEKOLAH MENENGAH KEBANGSAAN KENERING (D-SIDE)

**Company Name** : WabTech Sdn Bhd  
**Company Address** : 101-1, Jalan Metro Sendayan, 71950 Seremban, Negeri Sembilan.  
**Prepared By** : Mohd Farid bin Othman  
**Date** : 20/12/2024



**Starting Point**

Site / Boundary Name : Sekolah Menengah Kebangsaan Kenering  
 Address : Kampung Bagan Lawin, 33410 Lenggong, Perak.  
 District : Lenggong  
 Postcode : 33410  
 State : Perak  
 GPS Coordinate : 5.295972, 101.057139  
 LRD : A

**End Point**

Site / Boundary Name : Laluan Ulu Lawin, Lenggong  
 Address : Laluan Ulu Lawin, 33410 Lenggong, Perak.  
 District : Lenggong  
 Postcode : 33410  
 State : Perak  
 GPS Coordinate : 5.304275, 101.052458  
 LRD : B



PROJEK PENYEDIAAN DAN PENYELENGGARAAN POINT OF PRESENCE (POP)  
FASA 2: HAB INFRASTRUTUK GENTIAN OPTIK BERHAMPIRAN DENGAN  
SEKOLAH, KAWASAN PERINDUSTRIAN, PREMIS KERAJAAN DAN KOMUNITI  
SEKITARNYA OLEH KEMENTERIAN KOMUNIKASI MALAYSIA – ZON UTARA  
(KKMM.400-11/17/132(1))



WABTECH SDN BHD  
(1398887-X)

## 1.0 WORK SUMMARY

NO	PROPOSED DISTANCE AND METHOD	UNIT	QUANTITY
1	Horizontal Directional Drilling (HDD)	m	52
2	Carriage Way Open Trench (CW)	m	0
3	Grass Verge Open Trenching (GV)	m	0
4	Micro Trenching (MT)	m	0
Total			

NO	OTHER INFORMATION	UNIT	QUANTITY
1	Installation of Short Span ADSS Fibre Cables	m	3409m
2	Install New Pole	ea	98
3	Install New JRC7 Manhole	ea	2
4	Install GI Riser 100mm	ea	2
5	Install Fiber Distribution Point and Closure (Splicing, Termination and Testing)	ea	18
6	Estimated Time Required for Completion	days	30



PROJEK PENYEDIAAN DAN PENYELENGGARAAN POINT OF PRESENCE (POP)  
FASA 2: HAB INFRASTRUTUK GENTIAN OPTIK BERHAMPIRAN DENGAN  
SEKOLAH, KAWASAN PERINDUSTRIAN, PREMIS KERAJAAN DAN KOMUNITI  
SEKITARNYA OLEH KEMENTERIAN KOMUNIKASI MALAYSIA – ZON UTARA  
(KKMM.400-11/17/132(1))



WABTECH SDN BHD  
(1398887-X)

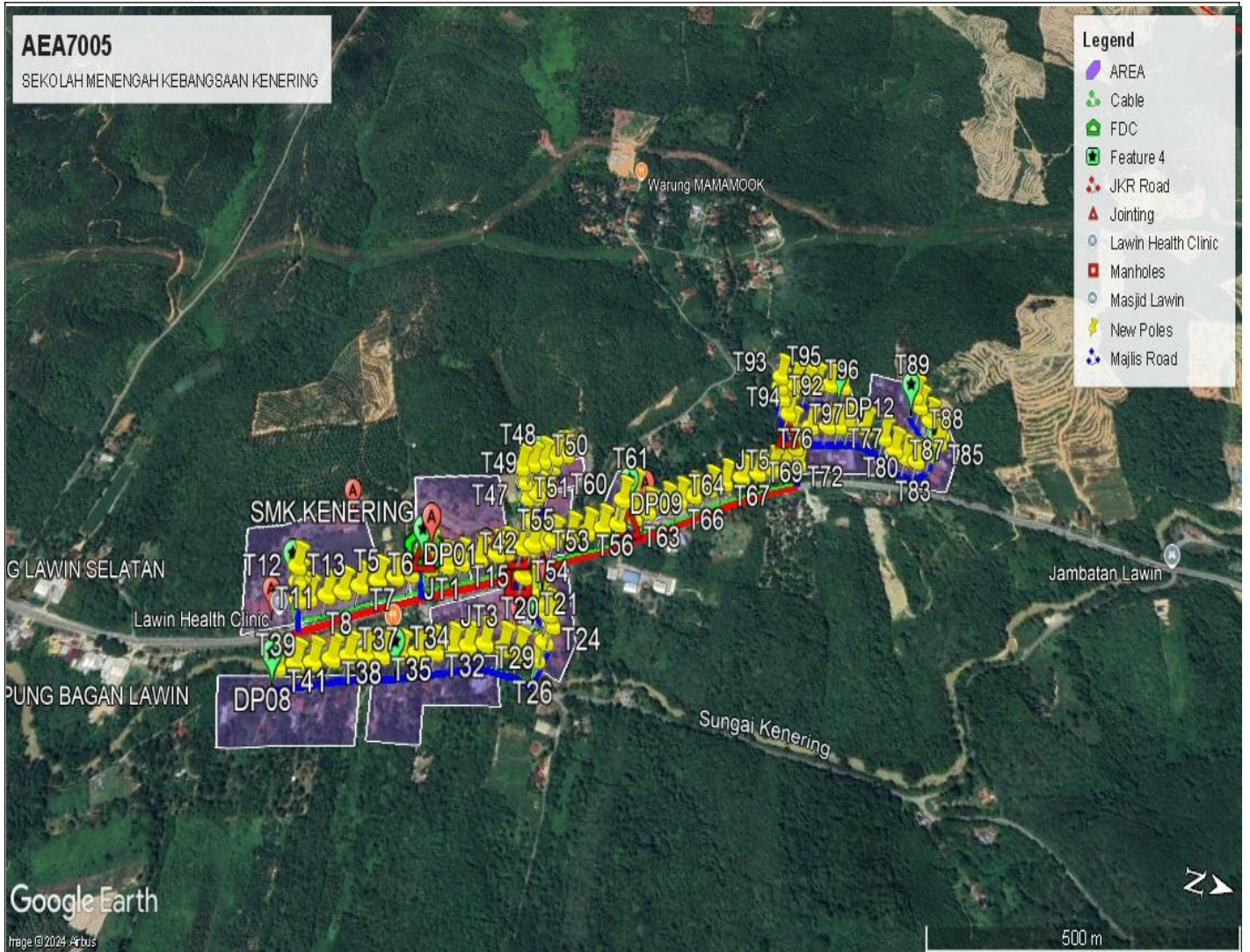
## 2.0 LOCAL AUTHORITY SUMMARY

Daerah Lenggong

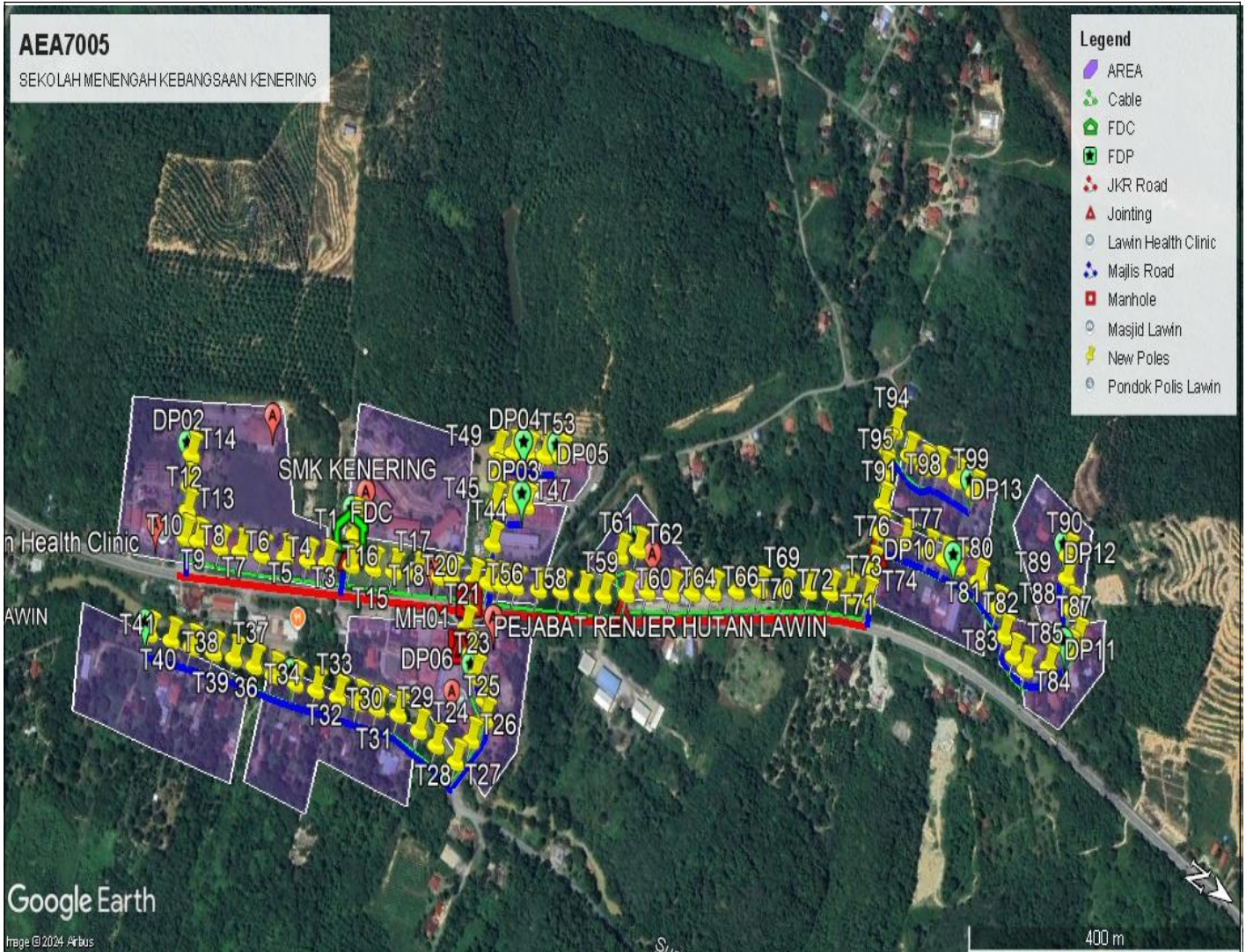
NO	ITEMS	Owner	Quantity	Distance (m)
1	HDD	JKR	1	52
		Majlis	-	-
		PDT	-	-
2	New Pole	JKR	34	1028
		Majlis	64	1988
		PDT	-	-
<b>Total Distance (m)</b>				<b>3068</b>

### 3.0 SITE PLAN (KMZ)

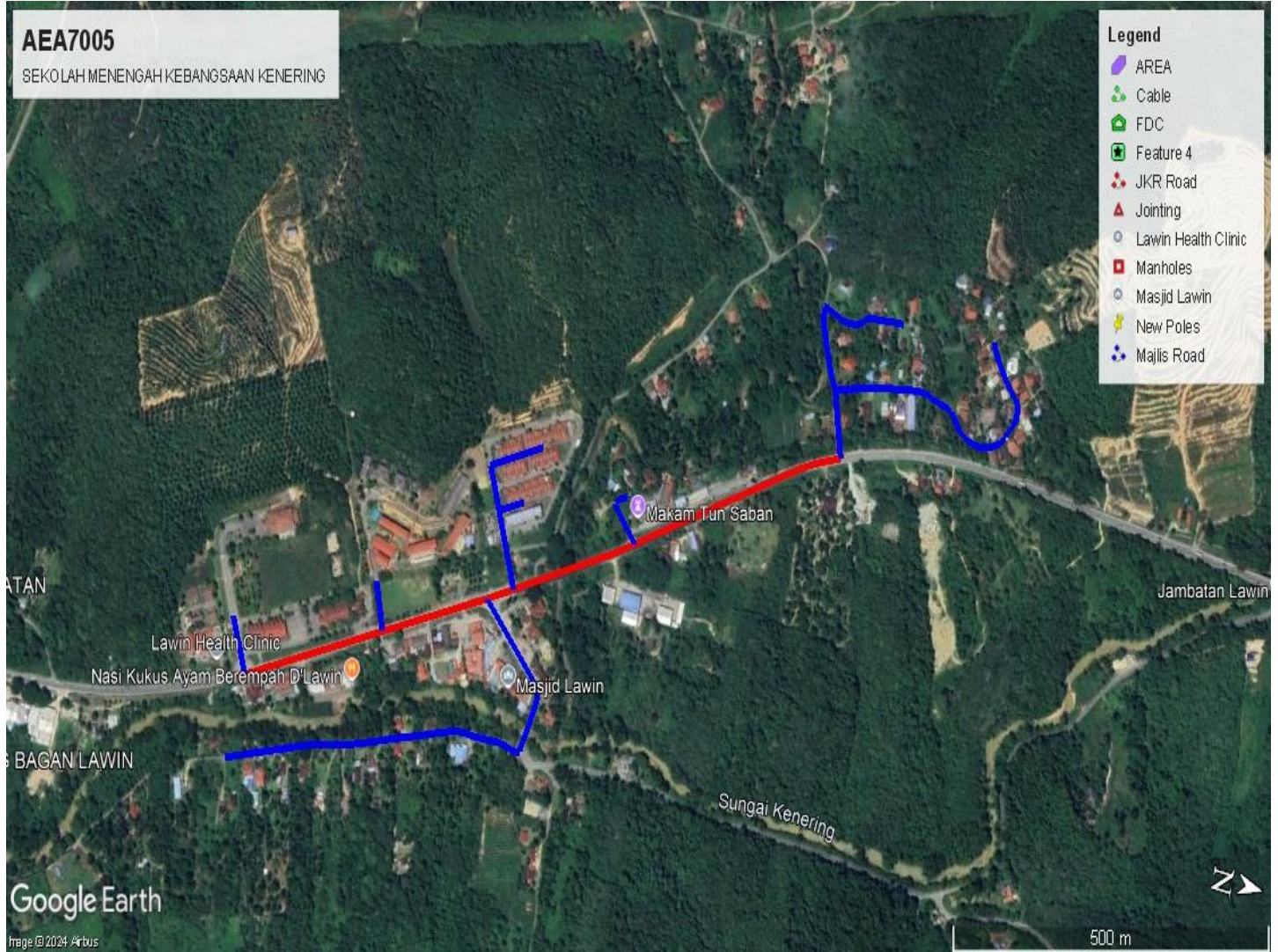
#### 3.1 Overview Site Area



### 3.2 Site boundry



### 3.3 Road Boundry



#### 4.0 PROPOSED NEW POLE

Proposed New Pole Coordinate					
No.	Pole Number	Distance (m)	Latitude	Longitude	Local Authority
1	FDC POLE	10	5.296028	101.057278	Majlis Daerah Lenggong
2	T001	17	5.296028	101.057278	Majlis Daerah Lenggong
3	T002	33	5.295973	101.057140	Majlis Daerah Lenggong
4	T003	36	5.296150	101.057547	JKR
5	T004	29	5.295862	101.057703	JKR
6	T005	34	5.295629	101.057815	JKR
7	T006	35	5.295355	101.057944	JKR
8	T007	33	5.295075	101.058092	JKR
9	T008	31	5.294803	101.058218	JKR
10	T009	35	5.294547	101.058325	JKR
11	T010	20	5.294253	101.058430	JKR
12	T011	31	5.294088	101.058494	JKR
13	T012	27	5.293975	101.058245	Majlis Daerah Lenggong
14	T013	33	5.293874	101.058025	Majlis Daerah Lenggong
15	T014	30	5.296416	101.057424	Majlis Daerah Lenggong
16	T015	34	5.296663	101.057309	JKR
17	T016	35	5.296939	101.057177	JKR
18	T017	19	5.297220	101.057033	JKR
19	T018	31	5.297370	101.056954	JKR
20	T019	52	5.297626	101.056830	JKR
21	T020	30	5.297780	101.057272	Majlis Daerah Lenggong
22	T021	26	5.297971	101.057456	Majlis Daerah Lenggong
23	T022	29	5.298140	101.057619	Majlis Daerah Lenggong
24	T023	21	5.298368	101.057752	Majlis Daerah Lenggong
25	T024	31	5.298477	101.057909	Majlis Daerah Lenggong
26	T025	33	5.298426	101.058180	Majlis Daerah Lenggong
27	T026	34	5.298363	101.058469	Majlis Daerah Lenggong
28	T027	30	5.298055	101.058460	Majlis Daerah Lenggong
29	T028	35	5.297786	101.058455	Majlis Daerah Lenggong
30	T029	32	5.297468	101.058463	Majlis Daerah Lenggong
31	T030	30	5.297198	101.058566	Majlis Daerah Lenggong
32	T031	31	5.296944	101.058652	Majlis Daerah Lenggong
33	T032	33	5.296686	101.058752	Majlis Daerah Lenggong
34	T033	31	5.296401	101.058842	Majlis Daerah Lenggong
35	T034	34	5.296132	101.058930	Majlis Daerah Lenggong
36	T035	30	5.295837	101.059014	Majlis Daerah Lenggong
37	T036	31	5.295571	101.059074	Majlis Daerah Lenggong
38	T037	31	5.295301	101.059147	Majlis Daerah Lenggong
39	T038	34	5.295043	101.059246	Majlis Daerah Lenggong

No.	Pole Number	Distance (m)	Latitude	Longitude	Local Authority
40	T039	32	5.294755	101.059357	Majlis Daerah Lenggong
41	T040	34	5.294482	101.059446	Majlis Daerah Lenggong
42	T041	22	5.294195	101.059546	Majlis Daerah Lenggong
43	T042	43	5.297803	101.056739	JKR
44	T043	44	5.297655	101.056379	Majlis Daerah Lenggong
45	T044	23	5.297477	101.056025	Majlis Daerah Lenggong
46	T045	24	5.297655	101.055926	Majlis Daerah Lenggong
47	T046	29	5.297846	101.055821	Majlis Daerah Lenggong
48	T047	28	5.297356	101.055789	Majlis Daerah Lenggong
49	T048	24	5.297239	101.055561	Majlis Daerah Lenggong
50	T049	22	5.297429	101.055465	Majlis Daerah Lenggong
51	T050	25	5.297603	101.055371	Majlis Daerah Lenggong
52	T051	24	5.297804	101.055269	Majlis Daerah Lenggong
53	T052	19	5.297992	101.055168	Majlis Daerah Lenggong
54	T053	23	5.297955	101.056667	JKR
55	T054	34	5.298142	101.056581	JKR
56	T055	33	5.298417	101.056443	JKR
57	T056	31	5.298681	101.056301	JKR
58	T057	32	5.298937	101.056178	JKR
59	T058	34	5.299187	101.056040	JKR
60	T059	43	5.299445	101.055867	JKR
61	T060	27	5.299175	101.055587	Majlis Daerah Lenggong
62	T061	31	5.299347	101.055412	Majlis Daerah Lenggong
63	T062	36	5.299665	101.055700	JKR
64	T063	31	5.299954	101.055546	JKR
65	T064	31	5.300189	101.055394	JKR
66	T065	35	5.300427	101.055245	JKR
67	T066	35	5.300685	101.055071	JKR
68	T067	37	5.300944	101.054894	JKR
69	T068	36	5.301236	101.054728	JKR
70	T069	32	5.301514	101.054560	JKR
71	T070	27	5.301768	101.054422	JKR
72	T071	28	5.301989	101.054319	JKR
73	T072	35	5.302224	101.054221	JKR
74	T073	41	5.302131	101.053921	Majlis Daerah Lenggong
75	T074	39	5.302028	101.053568	Majlis Daerah Lenggong
76	T075	36	5.302364	101.053470	Majlis Daerah Lenggong
77	T076	24	5.302681	101.053392	Majlis Daerah Lenggong
78	T077	21	5.302892	101.053347	Majlis Daerah Lenggong
79	T078	34	5.303083	101.053317	Majlis Daerah Lenggong
80	T079	40	5.303391	101.053295	Majlis Daerah Lenggong
81	T080	32	5.303739	101.053394	Majlis Daerah Lenggong
82	T081	26	5.303955	101.053584	Majlis Daerah Lenggong



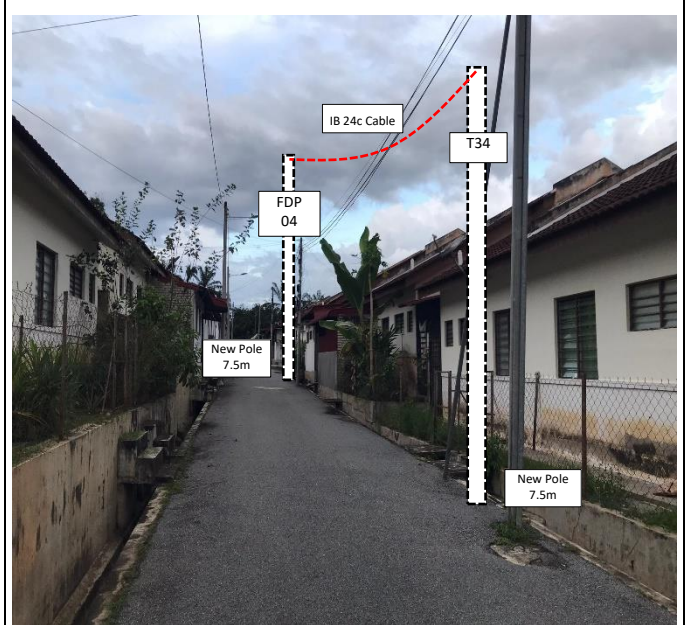
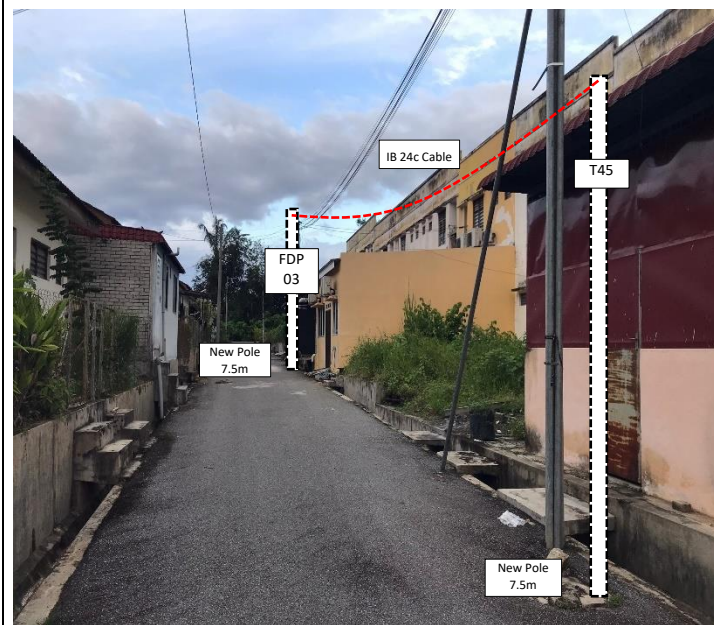
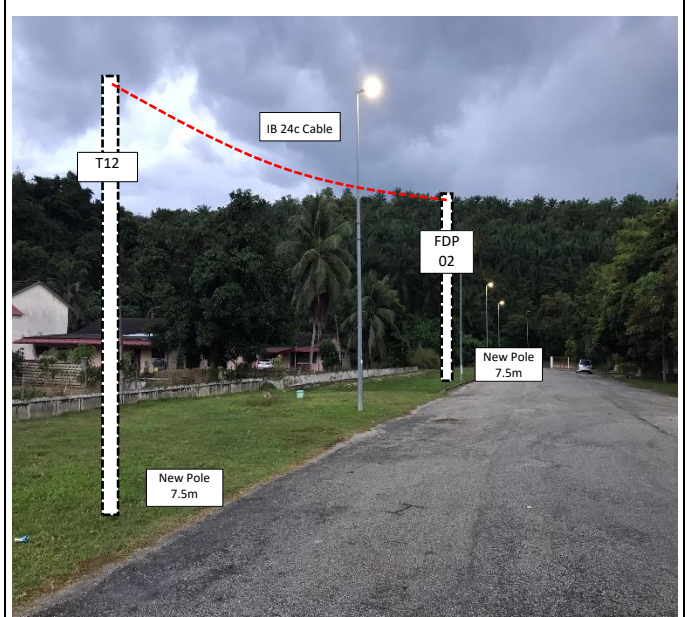
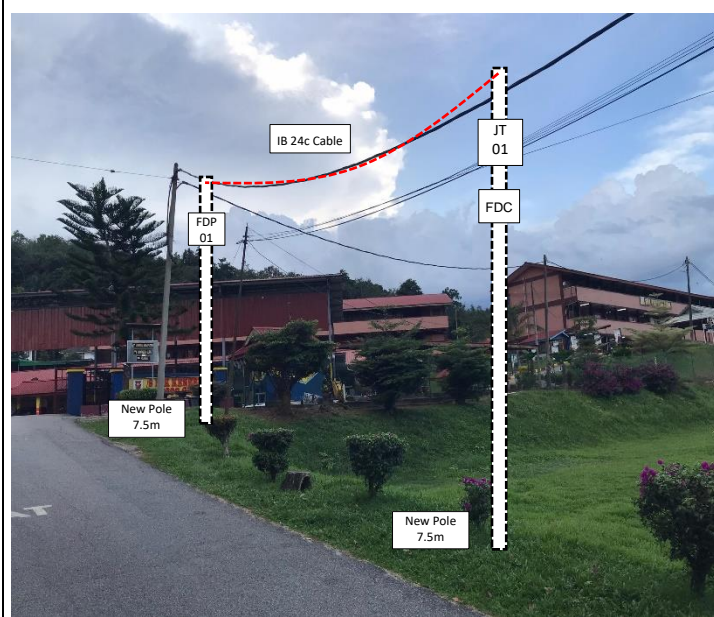
PROJEK PENYEDIAAN DAN PENYELENGGARAAN POINT OF PRESENCE (POP)  
 FASA 2: HAB INFRASTRUTUK GENTIAN OPTIK BERHAMPIRAN DENGAN  
 SEKOLAH, KAWASAN PERINDUSTRIAN, PREMIS KERAJAAN DAN KOMUNITI  
 SEKITARNYA OLEH KEMENTERIAN KOMUNIKASI MALAYSIA – ZON UTARA  
 (KKMM.400-11/17/132(1))

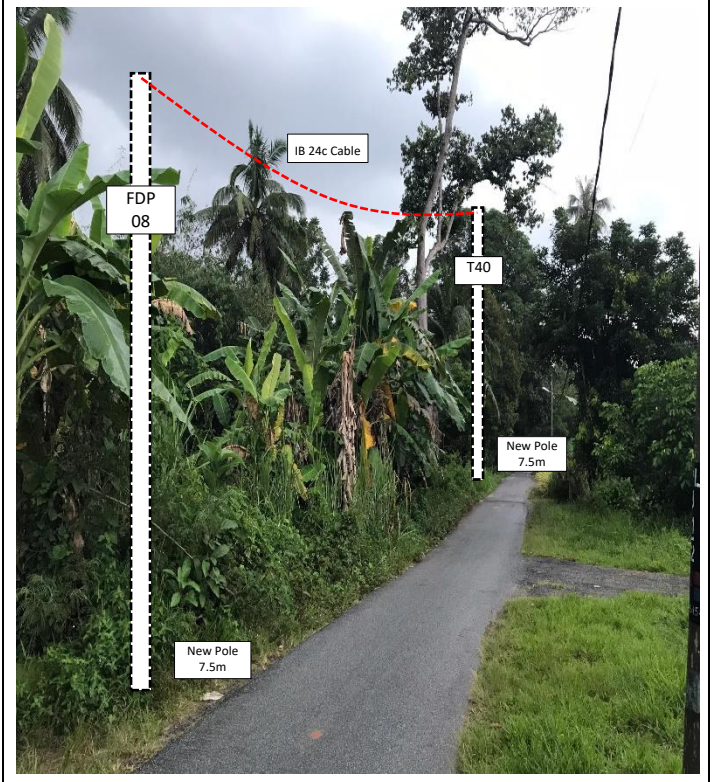
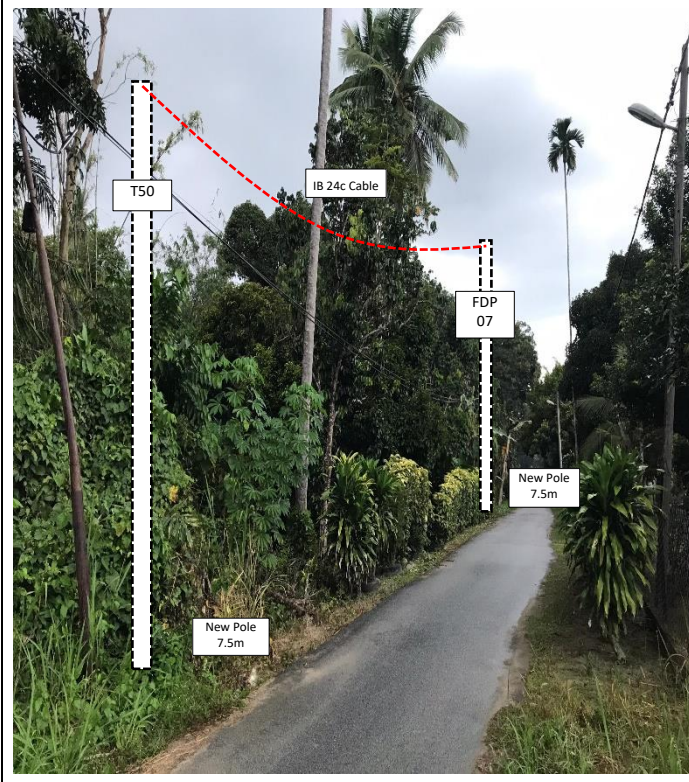
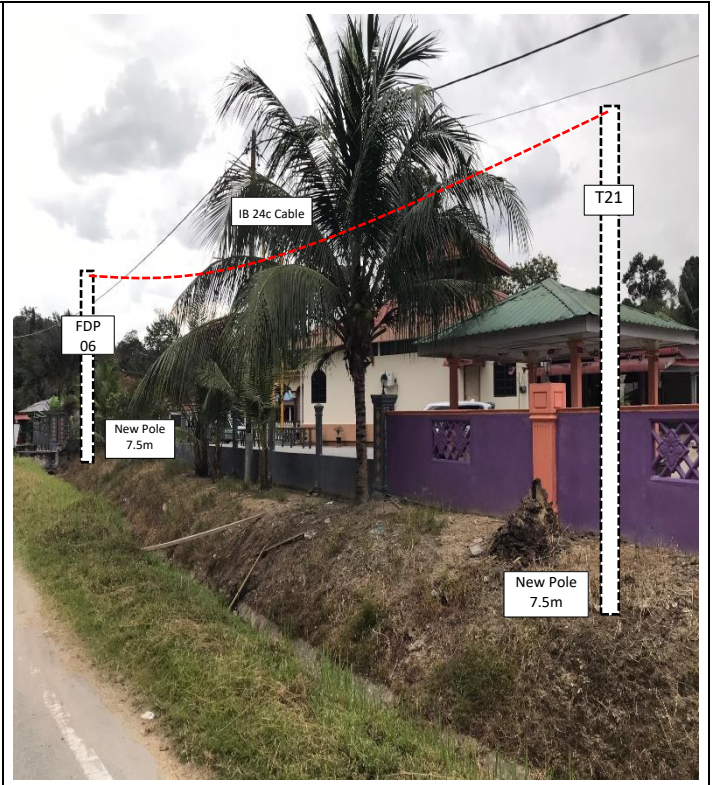


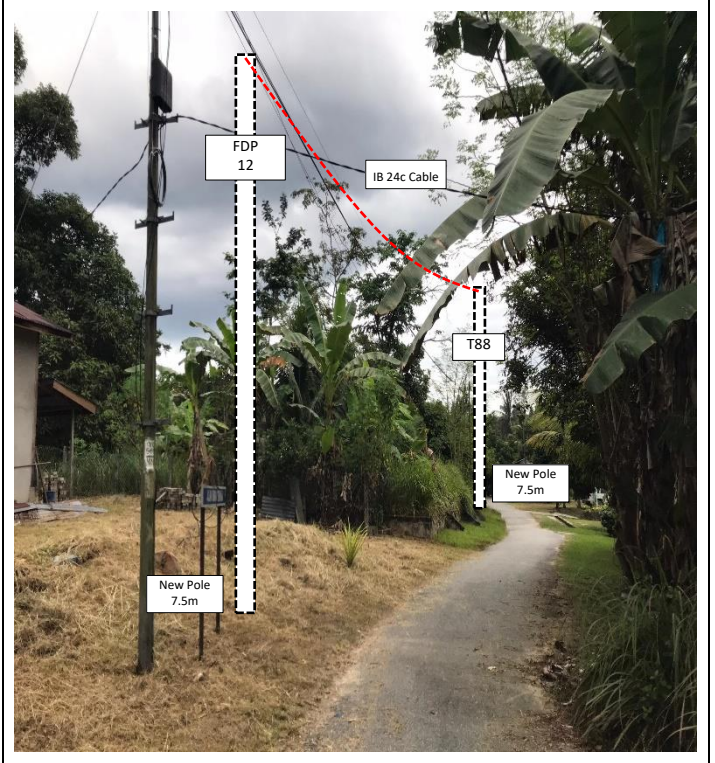
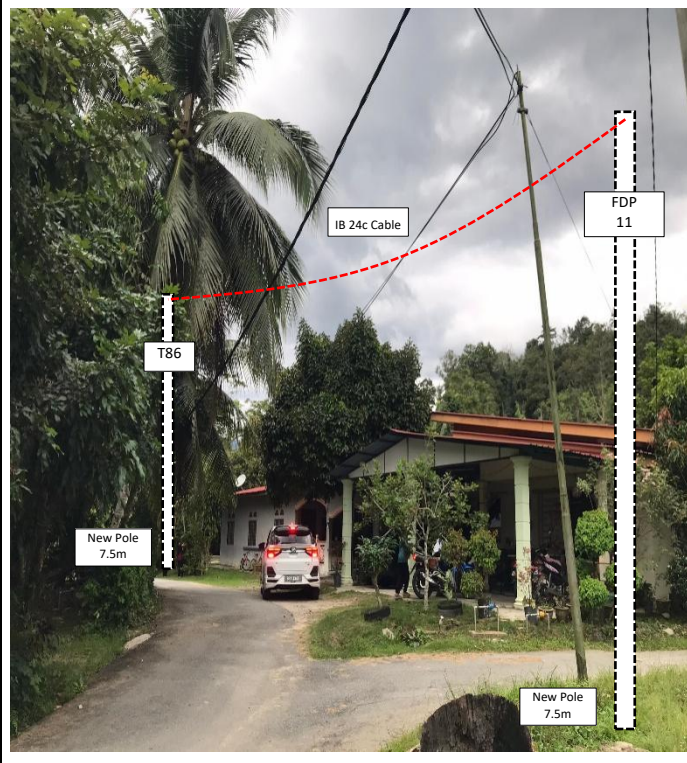
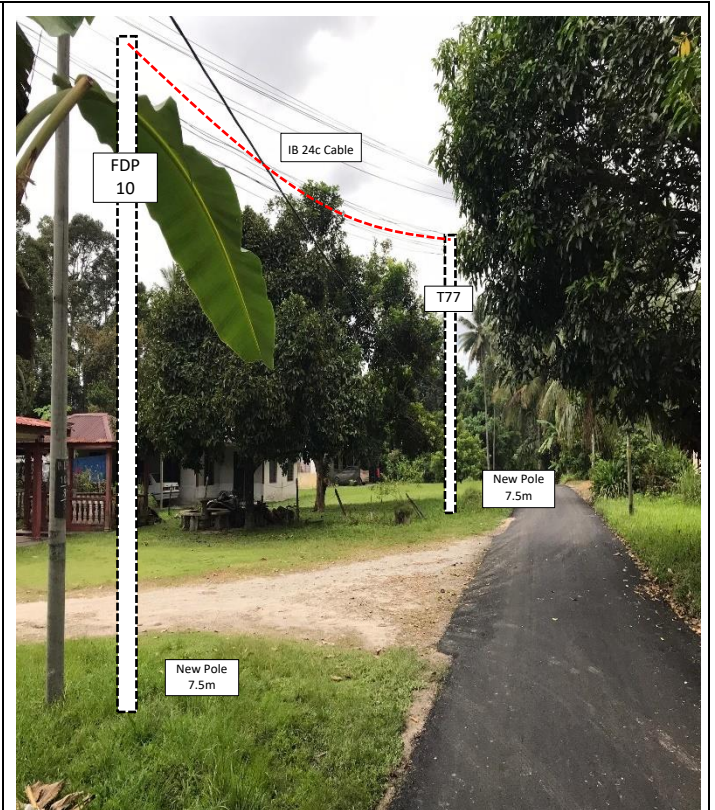
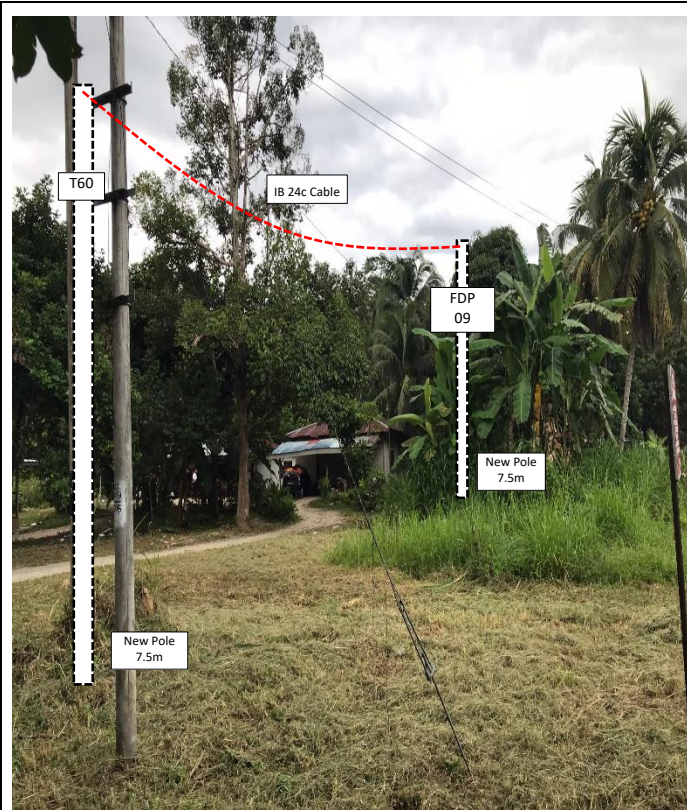
WABTECH SDN BHD  
 (1388387-X)

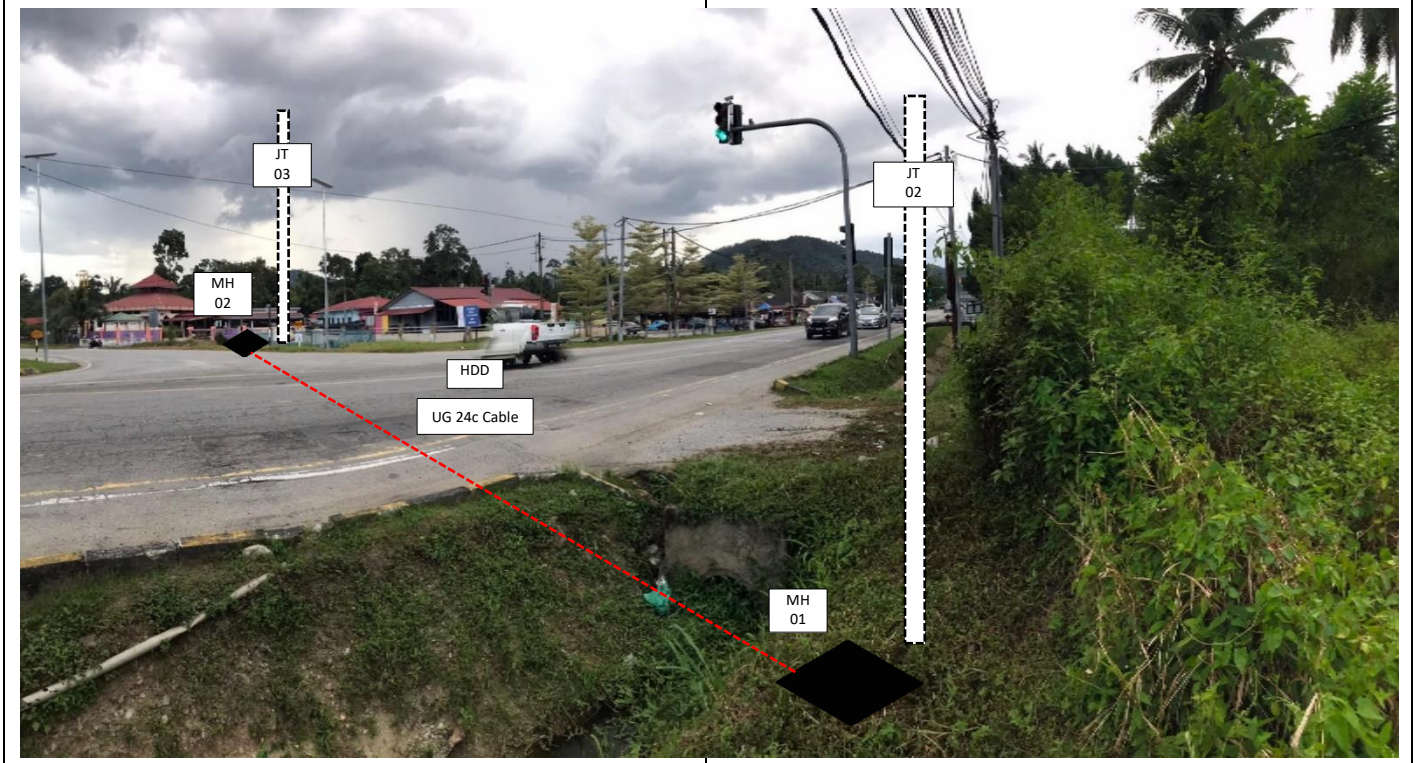
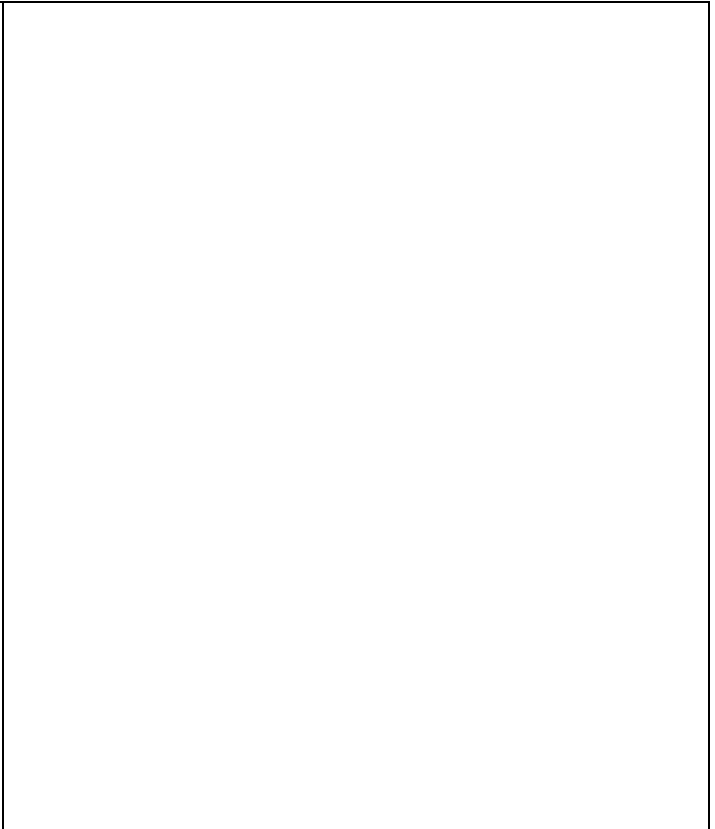
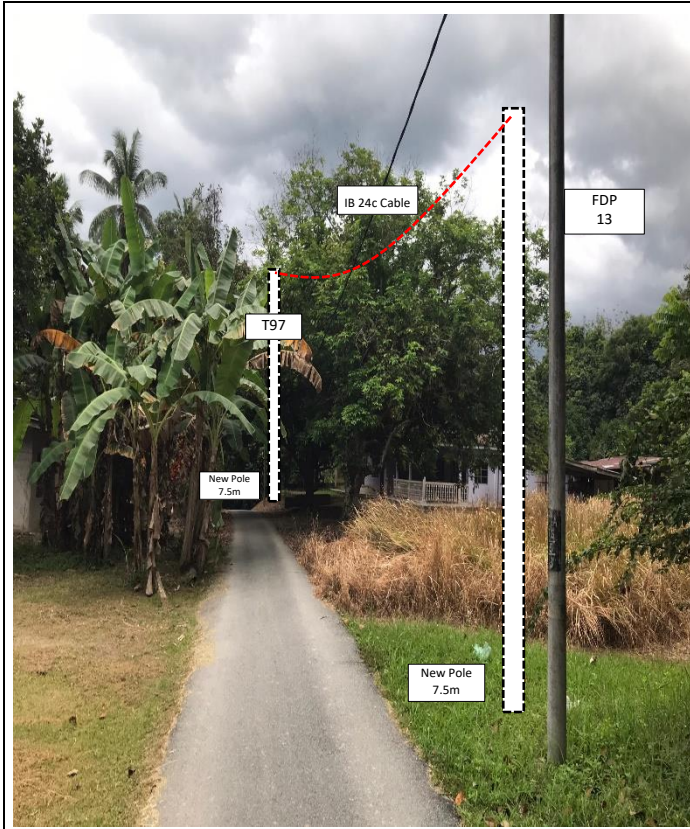
No.	Pole Number	Distance (m)	Latitude	Longitude	Local Authority
83	T082	22	5.304166	101.053690	Majlis Daerah Lenggong
84	T083	34	5.304361	101.053715	Majlis Daerah Lenggong
85	T084	33	5.304607	101.053537	Majlis Daerah Lenggong
86	T085	19	5.304759	101.053277	Majlis Daerah Lenggong
87	T086	34	5.304793	101.053111	Majlis Daerah Lenggong
88	T087	34	5.304573	101.052893	Majlis Daerah Lenggong
89	T088	24	5.304375	101.052655	Majlis Daerah Lenggong
90	T089	32	5.304275	101.052459	Majlis Daerah Lenggong
91	T090	34	5.301917	101.053305	Majlis Daerah Lenggong
92	T091	27	5.301776	101.053032	Majlis Daerah Lenggong
93	T092	25	5.301696	101.052803	Majlis Daerah Lenggong
94	T093	34	5.301685	101.052584	Majlis Daerah Lenggong
95	T094	26	5.301971	101.052694	Majlis Daerah Lenggong
96	T095	21	5.302207	101.052699	Majlis Daerah Lenggong
97	T096	28	5.302379	101.052614	Majlis Daerah Lenggong
98	T097	29	5.302631	101.052582	Majlis Daerah Lenggong
99	T098	29	5.302894	101.052565	Majlis Daerah Lenggong
100	MH01	52	5.297629	101.056830	JKR
101	MH02	52	5.297778	101.057276	Majlis Daerah Lenggong

**5.0 SITE PHOTOS - PROPOSED NEW POLE**











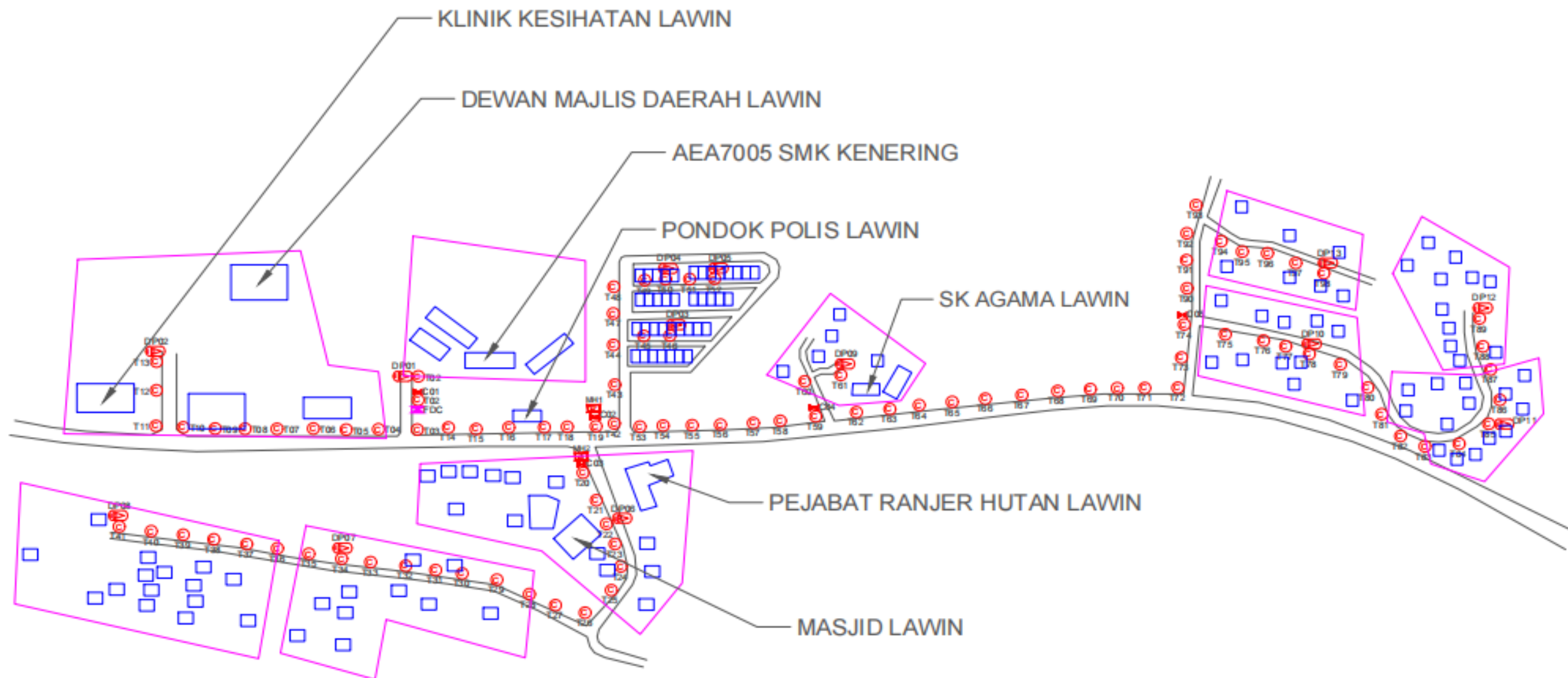
PROJEK PENYEDIAAN DAN PENYELENGGARAAN POINT OF PRESENCE (POP)  
FASA 2: HAB INFRASTRUTUK GENTIAN OPTIK BERHAMPIRAN DENGAN  
SEKOLAH, KAWASAN PERINDUSTRIAN, PREMIS KERAJAAN DAN KOMUNITI  
SEKITARNYA OLEH KEMENTERIAN KOMUNIKASI MALAYSIA – ZON UTARA  
(KKMM.400-11/17/132(1))



WABTECH SDN BHD  
11398387-XL

## 6.0 3<sup>rd</sup> PARTIES DEPENDENCIES

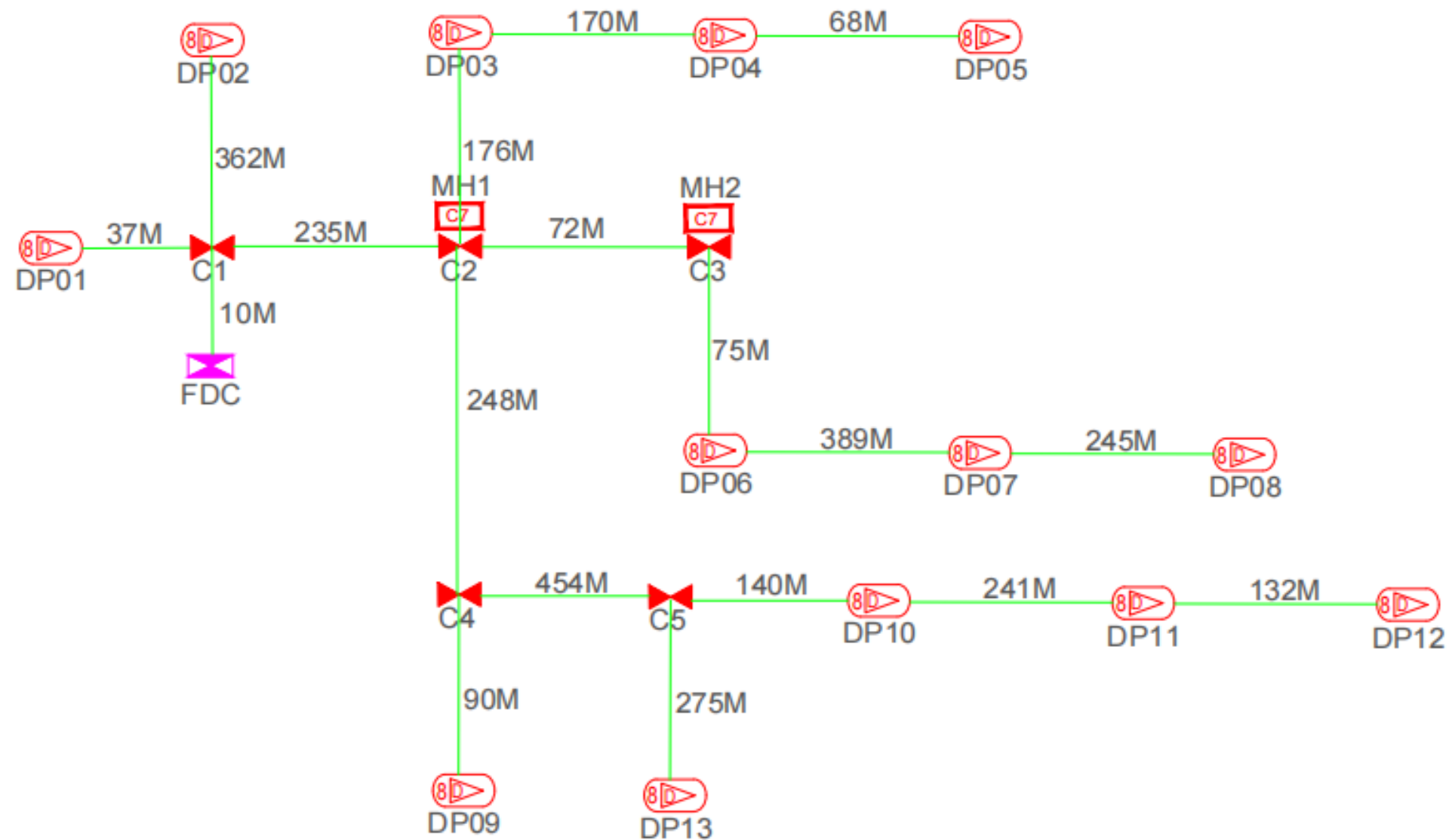
NO	LOCAL COUNCIL / AUTHORITY	REMARK
1	Majlis Daerah Lenggong	1197m
2	JKR Daerah Lenggong	2091m



**TOTAL HOME PASSES: 104 UNITS**

LEGEND									
12C FDC	Installed 1:4 splitter in FDC	Installed Pole (5m)	New Manhole (RC7)	Tension Small / Tension Big	MH1	MH NO.			
24C FDC	FDP with (1:8) splitter	Installed Riser	House Number	Existing Manhole	TKS-1	Existing THB Pole NO.			
48C FDC	Closure	Suspension Big	Existing THB Pole	CE1	Closure NO.	PO1	New Pole NO.		
96C FDC	New Manhole (P1)	Suspension Small	LOOP	FDPI	FDP NO.				
144C FDC	Installed Pole (7.5M)	FDC	FDP Boundary	FDCC	FDC NO.				

<b>KEY PLAN :</b> 	<b>PROJECT OWNER :</b>  KEMENTERIAN KOMUNIKASI	<b>MAIN CONTRACTOR :</b>  <b>PRIVASAT</b>	<b>SUB-CONTRACTOR :</b>  WRBTECH SDN BHD	<b>PROJECT TITLE :</b> CONTRACT FOR THE PROVISION OF SUPPLY, INSTALLATION, AND COMMISSIONING OF FTTH NETWORK INFRASTRUCTURE - POP 2 PROJECT D-SIDE - AEA7005 - SMK KENERING	<b>DRAWING TITLE :</b> <b>AEA7005 SMK KENERING</b>	Design By <b>ENGINEER</b>	Date <b>DATE</b>
						Drawn By <b>CAD ENGINEER</b>	Scale <b>NTS</b>
<b>DRAWING NUMBER :</b>						Checked By <b>ENGINEER</b>	Job Number <b>JOB/NUMBER</b>
<b>PROJECT PHASE :</b> PROJECT PHASE						<b>DRAWING/NUMBER</b>	Sheet : <b>1/1</b>
THIS PRINT AND ITS COPYRIGHT ARE THE PROPERTY						Size : <b>A3</b>	



TOTAL FOC DISTANCE: 3,409 METERS

LEGEND		New Manhole (PC7)		Tension Small / Tension Big		MH1 MH NO.	
12C FDC	Installed 1:4 splitter in FDC	Installed Pole (9m)	House Number	Existing Manhole	TKS-1	Existing THS Pole NO.	
24C FDC	FDP with (1:8) splitter	Installed Risers	Existing THS Pole	Closure NO.	PC01	New Pole NO.	
48C FDC	Closure	Suspension Big	LOOP	FDP1	FDP NO.	SEE SHEET XXX	
96C FDC	New Manhole (PC)	Suspension Small	FDP Boundary	FDC	FDC NO.	SEE SHEET XXX	
144C FDC	Installed Pole (7.5M)	FDC					

<b>KEY PLAN :</b> 	<b>PROJECT OWNER :</b> 	<b>MAIN CONTRACTOR :</b>  <b>PRIVASAT</b>	<b>SUB-CONTRACTOR :</b> 	<b>PROJECT TITLE :</b> CONTRACT FOR THE PROVISION OF SUPPLY, INSTALLATION, AND COMMISSIONING OF FTTX NETWORK INFRASTRUCTURE - POP 2 PROJECT D-SIDE - AEA7005 - SMK KENERING	<b>DRAWING TITLE :</b> <b>AEA7005 SMK KENERING</b>	Design By <b>ENGINEER</b> Date <b>DATE</b> Drawn By <b>CAD ENGINEER</b> Scale <b>NTS</b> Checked By <b>ENGINEER</b> Job Number <b>JOB/NUMBER</b>
					<b>PROJECT PHASE :</b> <b>PROJECT PHASE</b>	DRAWING NUMBER : <b>DRAWING/NUMBER</b> Sheet : <b>1/1</b> THIS PRINT AND ITS COPYRIGHT ARE THE PROPERTY      Size : <b>A3</b>