

## TECHNICAL PROPOSAL

### POP2 ABD3059SEKOLAH JENIS KEBANGSAAN (TAMIL) KUALA KURAU (D-SIDE)

Company Name	: SEGALA DELIMA (M) SDN BHD
Company Address	: No. 8, Jalan Ampang Baru 6B, Pusat Perdagangan Baru, 31350 Ipoh, Perak
Prepared By	: Nasrohaizan Bin Mustaffa
Date	: 11/12/2024



**Point A**



**Point B**

#### Starting Point

Site / Boundary Name	: SEKOLAH JENIS KEBANGSAAN (TAMIL) KUALA KURAU
District	: KUALA KURAU
Postcode	: 34350
State	: PERAK
GPS Coordinate	: <a href="#">5.018956, 100.433408</a>
LRD	: A

#### End Point

Site / Boundary Name	: TAMAN KURAU
Address	: LORONG KURAU 2
District	: KUALA KURAU
Postcode	: 34350
State	: Perak
GPS Coordinate	: <a href="#">5.020144, 100.439606</a>
LRD	: B

## 1.0 WORK SUMMARY

NO	PROPOSED DISTANCE AND METHOD	UNIT	QUANTITY
1	Horizontal Directional Drilling (HDD)	m	0
2	Carriage Way Open Trench(CW)	m	0
3	Grass Verge Open Trenching (GV)	m	0
4	Micro Trenching (MT)	m	0
Total			0

NO	OTHER INFORMATION	UNIT	QUANTITY
1	Installation of Short Span ADSS Fiber Cables	m	1770
2	Install New Pole	ea	56
3	Install New JRC7 Manhole	ea	0
4	Install GI Riser 100mm	ea	0
5	Install Fiber Distribution Point and Closure (Splicing, Termination and Testing)	ea	15
6	Estimated Time Required for Completion	days	30

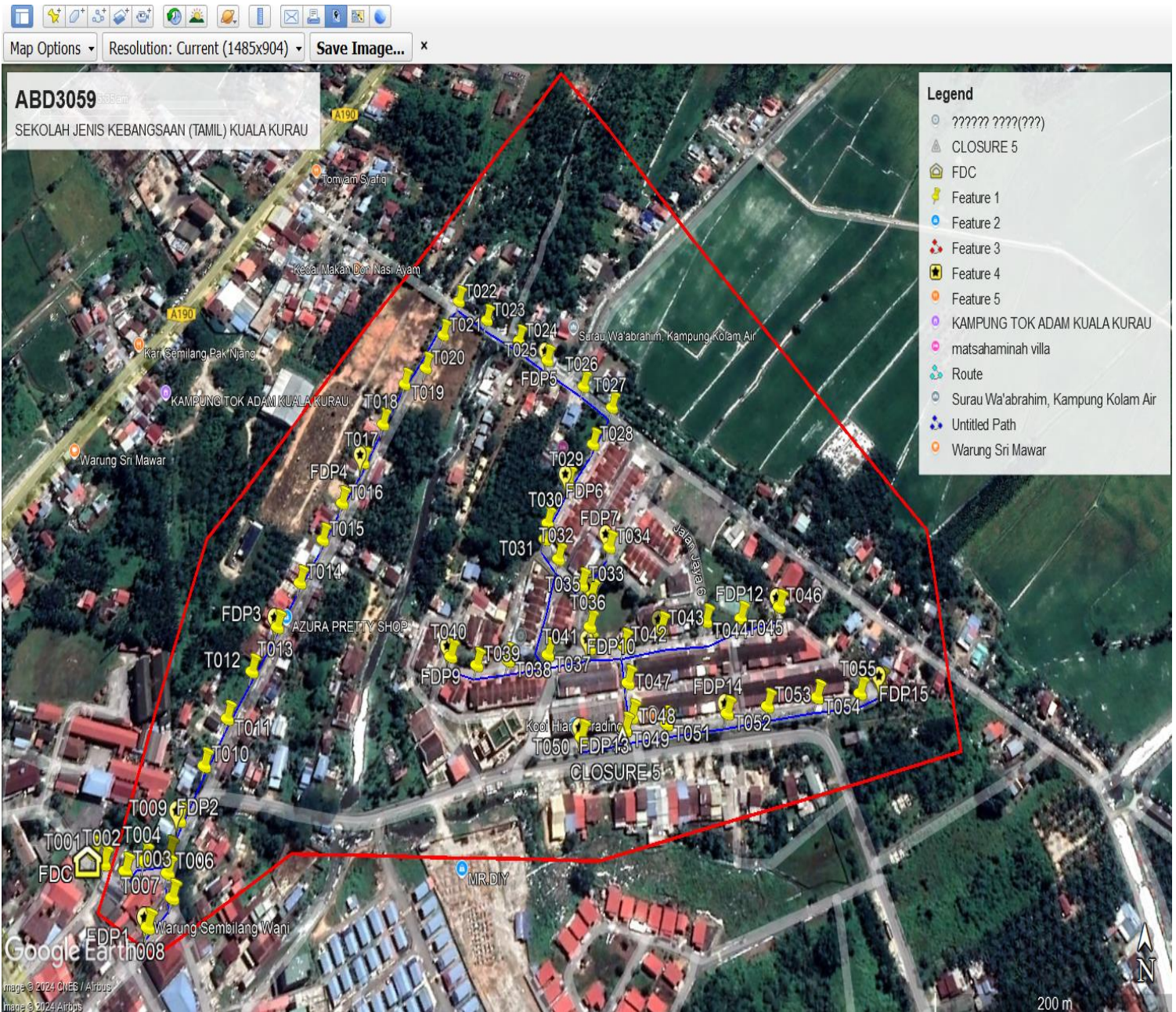
## 2.0 LOCAL AUTHORITY SUMMARY

Daerah Batu Gajah

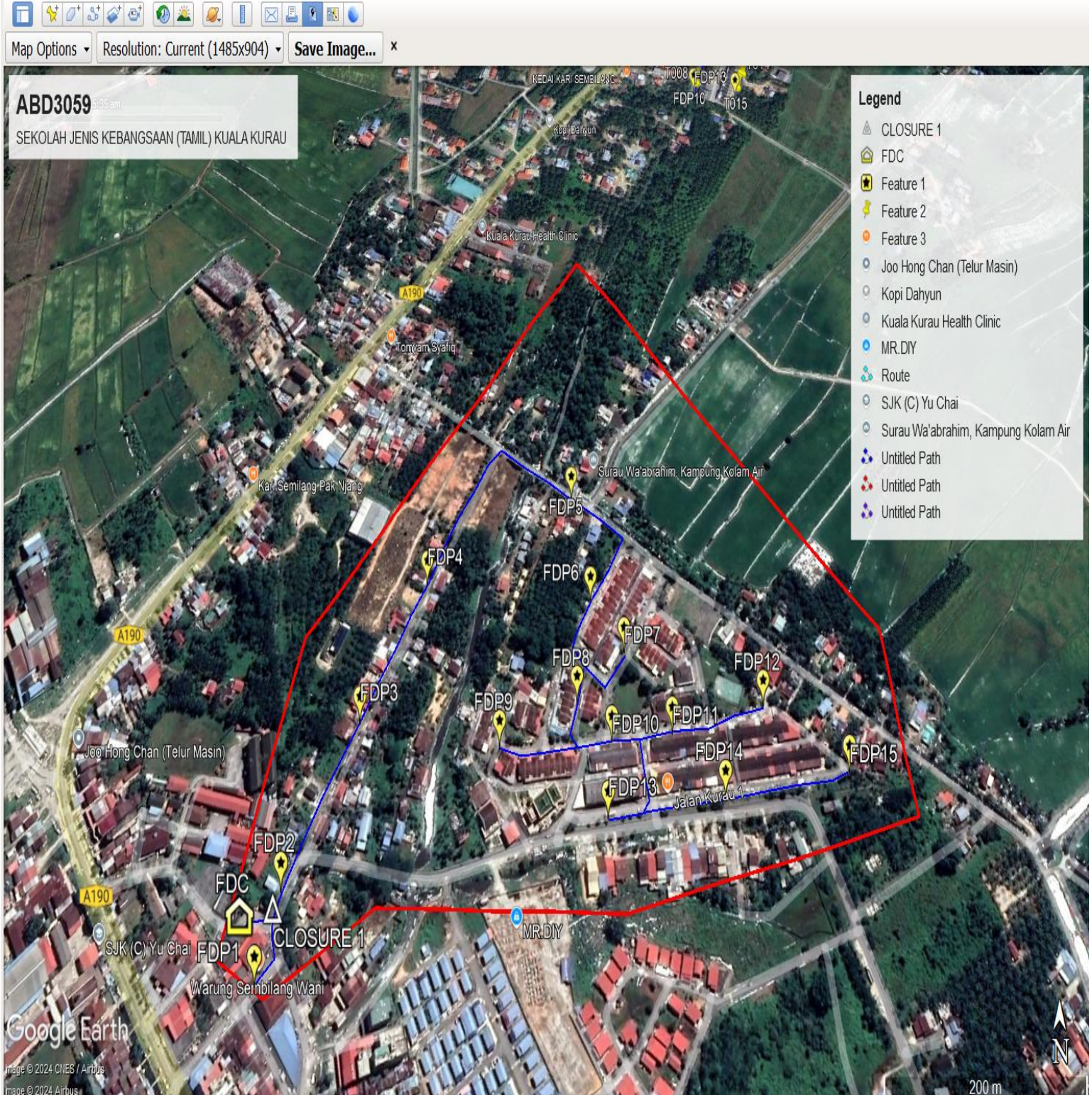
NO	ITEMS	Owner	Quantity	Distance (m)
1	HDD	JKR	-	-
		Majlis	-	-
		Estate / Private Land	-	-
2	New Pole	JKR	-	-
		Majlis	56	1770
		Estate / Private Land	-	-
<b>Total Distance (m)</b>				<b>1770</b>

### 3.0 SITE PLAN (KMZ)

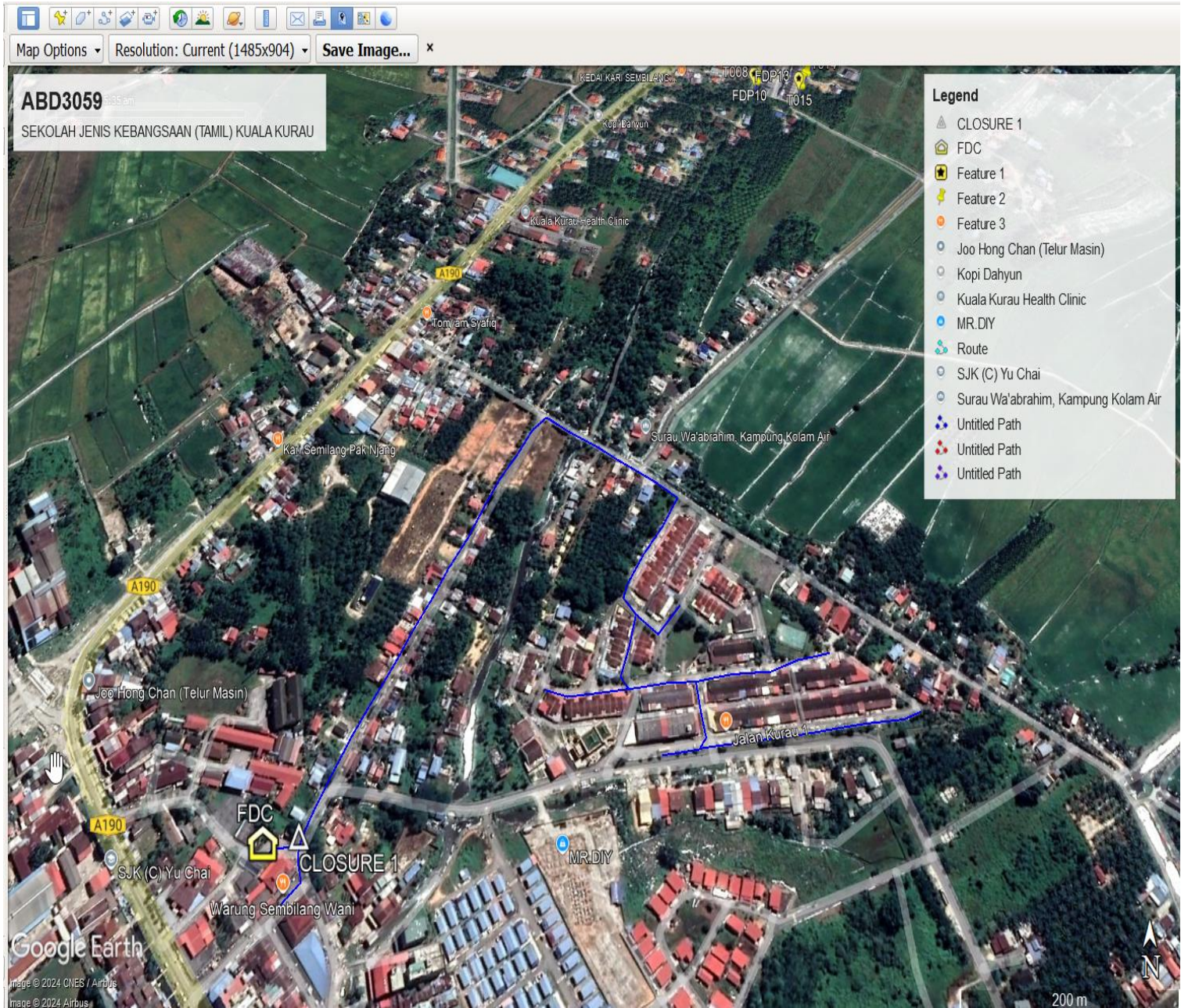
#### 3.1 Overview Site Area (Propose New Pole)



### 3.2 Proposed FDP and Closure



### 3.3 Site Plan - KMZ Routing (All Local Authority)



Red Colour - JKR

Road Blue Colour - Majlis Road

### 3.0 PROPOSED NEW MANHOLE

Proposed New Manhole Coordinate					
No.	Manhole Number	Distance (m)	Latitude	Longitude	Local Authority
1	MH01	-	-	-	-
2	MH02	-	-	-	-

### 4.0 PROPOSED NEW POLE

Exiting Pole Coordinate					
No.	Pole Number	Distance (m)	Latitude	Longitude	Local Authority
1	T001	20.0	5.019014	100.433369	Majlis Daerah Kerian
2	T002	20.0	5.018957	100.433459	Majlis Daerah Kerian
3	T003	23.0	5.018913	100.433638	Majlis Daerah Kerian
4	T004	35.00	5.019000	100.433733	Majlis Daerah Kerian
5	T005	35.00	5.019010	100.433962	Majlis Daerah Kerian
6	T006	35.00	5.018903	100.433969	Majlis Daerah Kerian
7	T007	35.00	5.018761	100.434029	Majlis Daerah Kerian
8	T008	35.00	5.018594	100.433873	Majlis Daerah Kerian
9	T009	35.00	5.019214	100.434004	Majlis Daerah Kerian
10	T010	35.00	5.019545	100.434150	Majlis Daerah Kerian
11	T011	35.00	5.019841	100.434292	Majlis Daerah Kerian
12	T012	35.00	5.020146	100.434451	Majlis Daerah Kerian
13	T013	35.00	5.020446	100.434620	Majlis Daerah Kerian
14	T014	35.00	5.020751	100.434775	Majlis Daerah Kerian
15	T015	35.00	5.021053	100.434938	Majlis Daerah Kerian
16	T016	35.00	5.021319	100.435080	Majlis Daerah Kerian
17	T017	35.00	5.021617	100.435241	Majlis Daerah Kerian
18	T018	35.00	5.021902	100.435395	Majlis Daerah Kerian
19	T019	35.00	5.022223	100.435565	Majlis Daerah Kerian
20	T020	35.00	5.022513	100.435725	Majlis Daerah Kerian
21	T021	35.00	5.022795	100.435886	Majlis Daerah Kerian
22	T022	35.00	5.022923	100.436021	Majlis Daerah Kerian
23	T023	35.00	5.022764	100.436293	Majlis Daerah Kerian
24	T024	35.00	5.022591	100.436602	Majlis Daerah Kerian
25	T025	35.00	5.022422	100.436870	Majlis Daerah Kerian
26	T026	35.00	5.022208	100.437206	Majlis Daerah Kerian
27	T027	35.00	5.022044	100.437466	Majlis Daerah Kerian
28	T028	35.00	5.021756	100.437293	Majlis Daerah Kerian
29	T029	35.00	5.021470	100.437074	Majlis Daerah Kerian
30	T030	35.00	5.021170	100.436895	Majlis Daerah Kerian
31	T031	35.00	5.021056	100.436874	Majlis Daerah Kerian
32	T032	35.00	5.020921	100.436992	Majlis Daerah Kerian
33	T033	35.00	5.020744	100.437196	Majlis Daerah Kerian

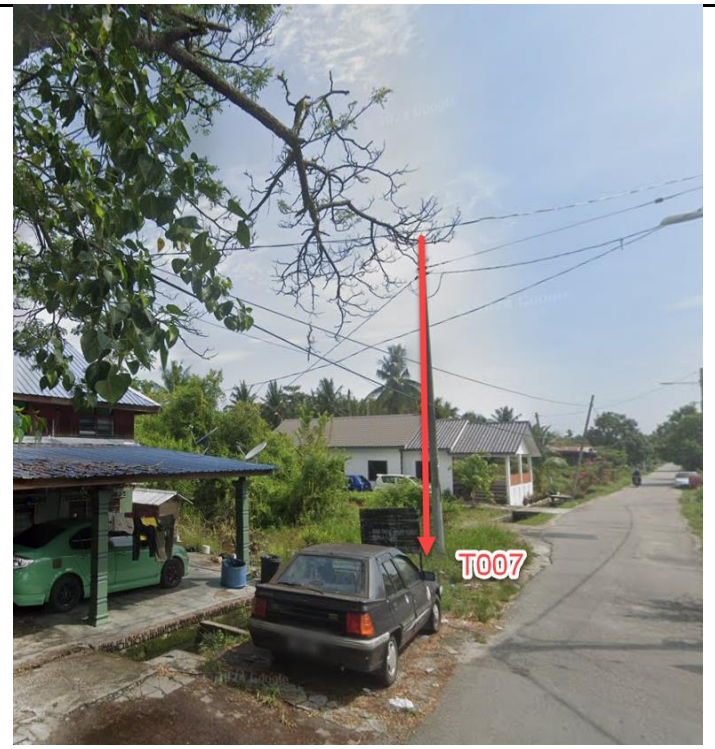
34	T034	35.00	5.021012	100.437434	Majlis Daerah Kerian
35	T035	35.00	5.020619	100.436904	Majlis Daerah Kerian
36	T036	35.00	5.020672	100.437278	Majlis Daerah Kerian
37	T037	35.00	5.020459	100.437265	Majlis Daerah Kerian
38	T038	35.00	5.020222	100.436582	Majlis Daerah Kerian
39	T039	35.00	5.020190	100.436320	Majlis Daerah Kerian
40	T040	35.00	5.020249	100.436099	Majlis Daerah Kerian
41	T041	35.00	5.020313	100.437261	Majlis Daerah Kerian
42	T041	35.00	5.020328	100.437553	Majlis Daerah Kerian
43	T043	35.00	5.020374	100.437894	Majlis Daerah Kerian
44	T044	35.00	5.020417	100.438273	Majlis Daerah Kerian
45	T045	35.00	5.020513	100.438548	Majlis Daerah Kerian
46	T046	35.00	5.020590	100.438881	Majlis Daerah Kerian
47	T047	35.00	5.020079	100.437581	Majlis Daerah Kerian
48	T048	35.00	5.019857	100.437609	Majlis Daerah Kerian
49	T049	35.00	5.019775	100.437554	Majlis Daerah Kerian
50	T050	35.00	5.019732	100.437195	Majlis Daerah Kerian
51	T051	35.00	5.019814	100.437895	Majlis Daerah Kerian
52	T052	35.00	5.019884	100.438396	Majlis Daerah Kerian
53	T053	35.00	5.019928	100.438731	Majlis Daerah Kerian
54	T054	35.00	5.019982	100.439143	Majlis Daerah Kerian
55	T055	35.00	5.020003	100.439497	Majlis Daerah Kerian
56	T056	35.00	5.020059	100.439672	Majlis Daerah Kerian

**5.0 SITE PHOTOS - PROPOSED HDD AND NEW MANHOLE  
(N/A)**

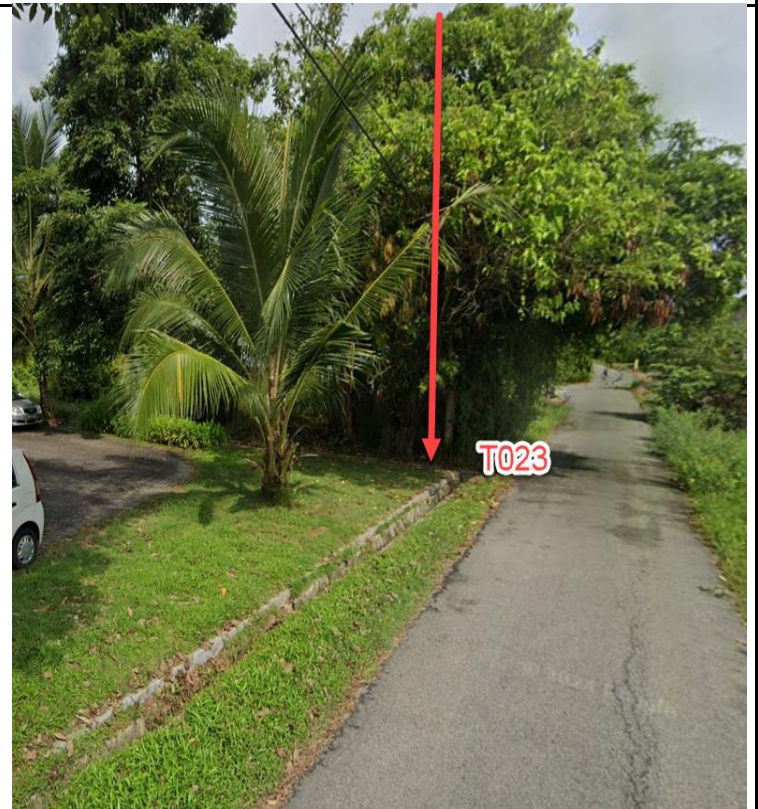
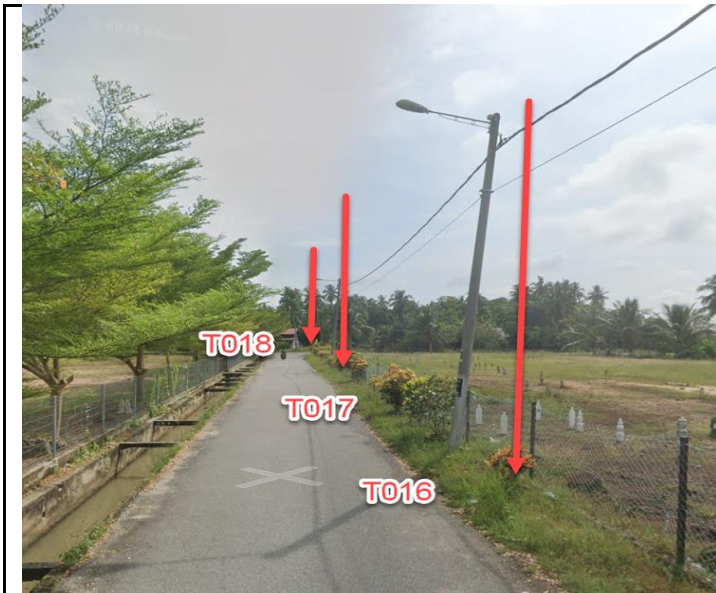
**6.0 SITE PHOTOS - PROPOSED NEW POLE**





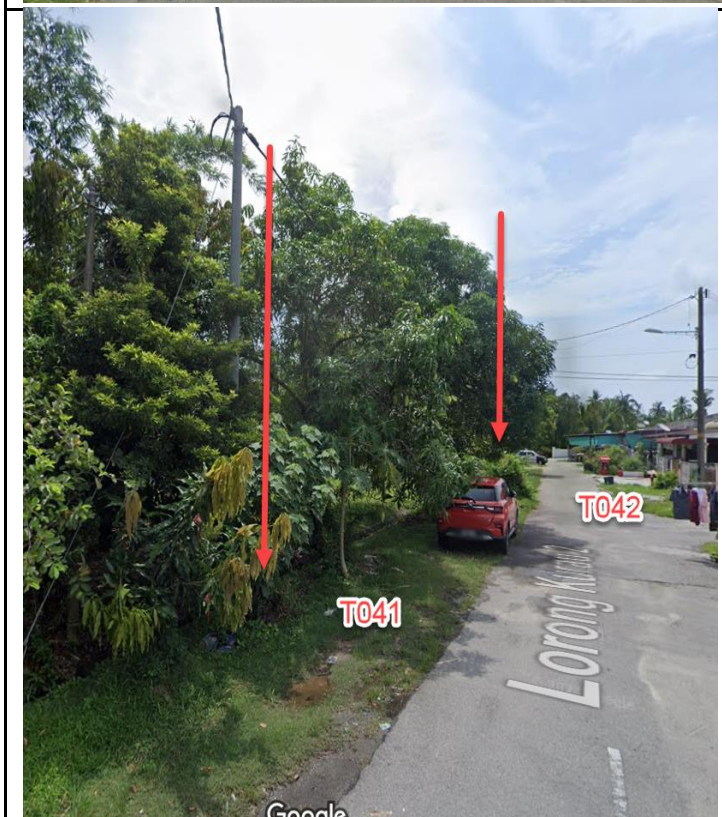
















NO	LOCAL COUNCIL / AUTHORITY	REMARK
1	Majlis Daerah Kerian	1770m
2	JKR Daerah Kerian	-

