

## TECHNICAL PROPOSAL

### POP2 ABBA001 SEKOLAH KEBANGSAAN SLIM RIVER (D-SIDE)

Company Name	:	STEADCOM SDN BHD
Company Address	:	11-3, Jalan Puteri 2/6, Bandar Puteri, 47100 Puchong, Selangor
Prepared By	:	Fariz Aizat
Date	:	20/11/2024



POINT A

POINT B

#### Starting Point

Site / Boundary Name	:	SEKOLAH KEBANGSAAN SLIM RIVER
Address	:	Jalan Mahkamah , 35800 Slim River, Perak.
District	:	Slim River
Postcode	:	35800
State	:	Perak
GPS Coordinate	:	3.833758, 101.404515
LRD	:	A

#### End Point

Site / Boundary Name	:	SEKOLAH KEBANGSAAN SLIM RIVER
Address	:	Jalan Intan, Taman Krishnan, 35800 Slim River, Perak.
District	:	Slim River
Postcode	:	35800
State	:	Perak
GPS Coordinate	:	3.836032, 101.401102
LRD	:	B

### Work Summary

No	Proposed Distance and Method	Unit	Qty
1	Horizontal Directional Drilling (HDD)	m	0
2	Carriage Way Open trench (CW)	m	0
3	Grass Verge Open Trenching (GV)	m	0
4	Micro trenching (MT)	m	0
	Total		0

	Other Information	Unit	Qty
1	Proposed Manhole	EA	0
2	Proposed Pole	EA	85
3	Joint Closure	EA	5
4	Estimated time required for completion	days	30

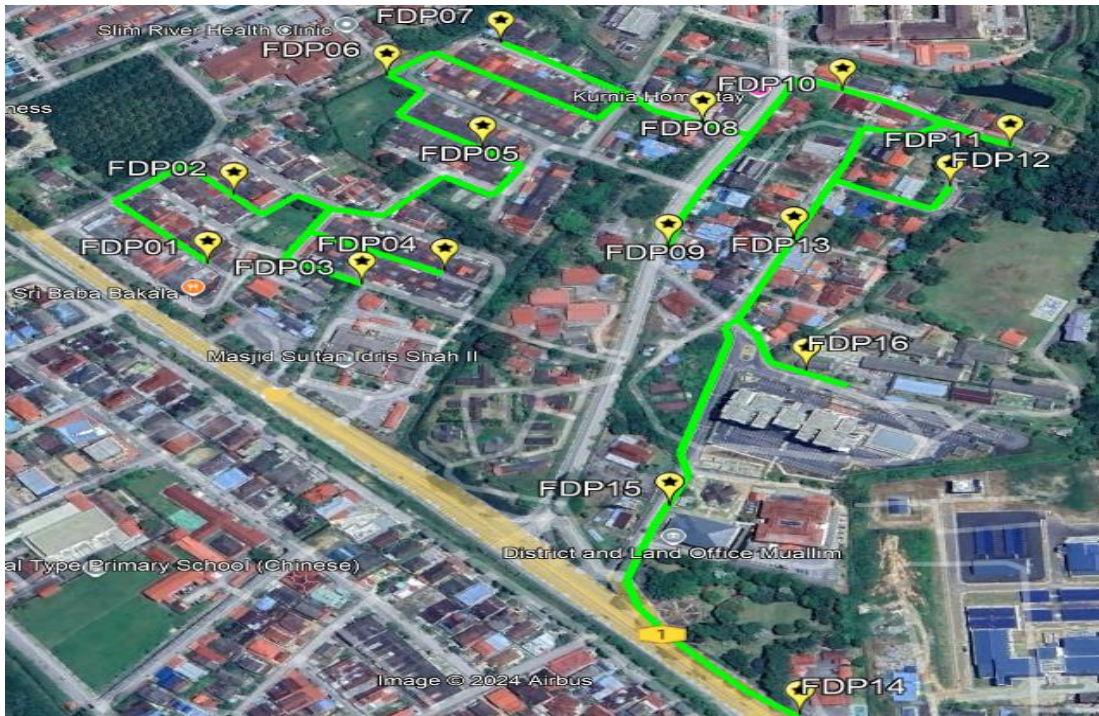
### Local Authority Summary

1. Daerah Tanjung Malim

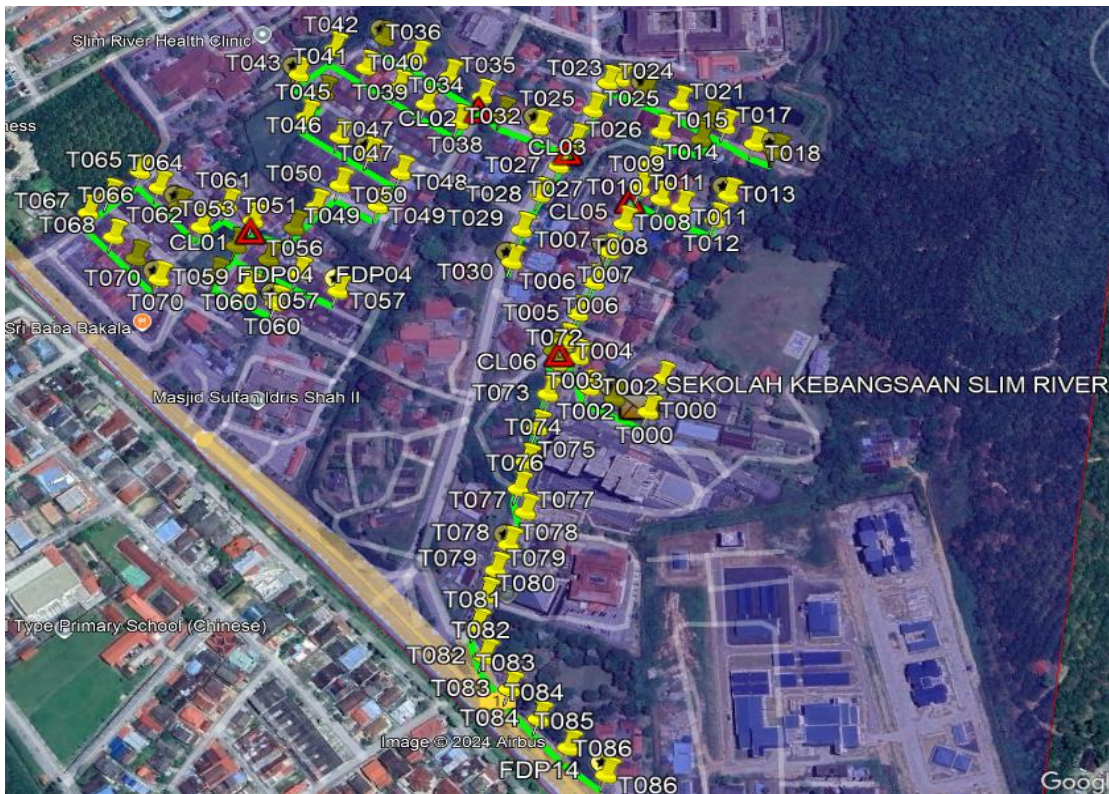
Bil	Items	Owner	Quantity	Distance(m)
1	HDD	JKR	-	-
		Majlis	-	-
		Estate / Private Land	-	-
2	New Pole	JKR	5	171m
		Majlis	80	2330m
		Estate / Private Land	-	-
3	Existing TNB Pole	JKR	-	-
		Majlis	-	-
		Estate / Private Land	-	-
Total				2501m

**Site Plan – KMZ (Overview site area)**

**Proposed FDP and Closure**



**Proposed New Pole**



**Site Plan – KMZ Routing (All Local Authority)**

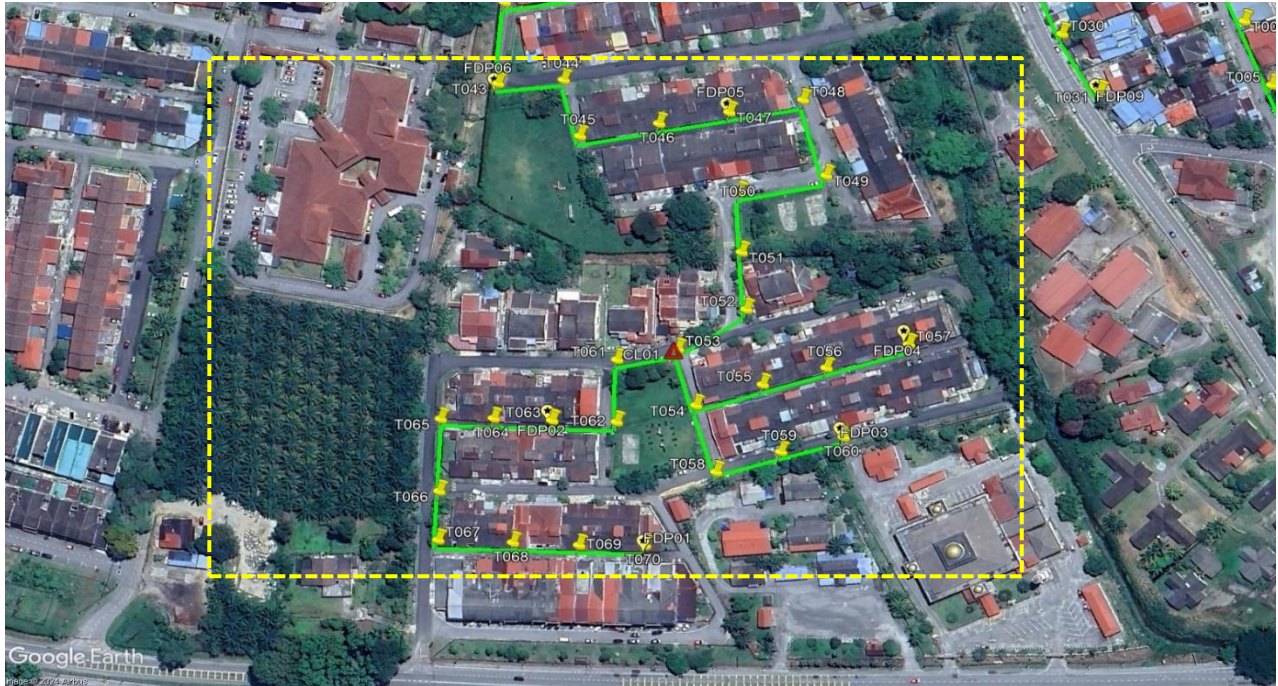


**Green Colour – JKR Daerah Muallim**

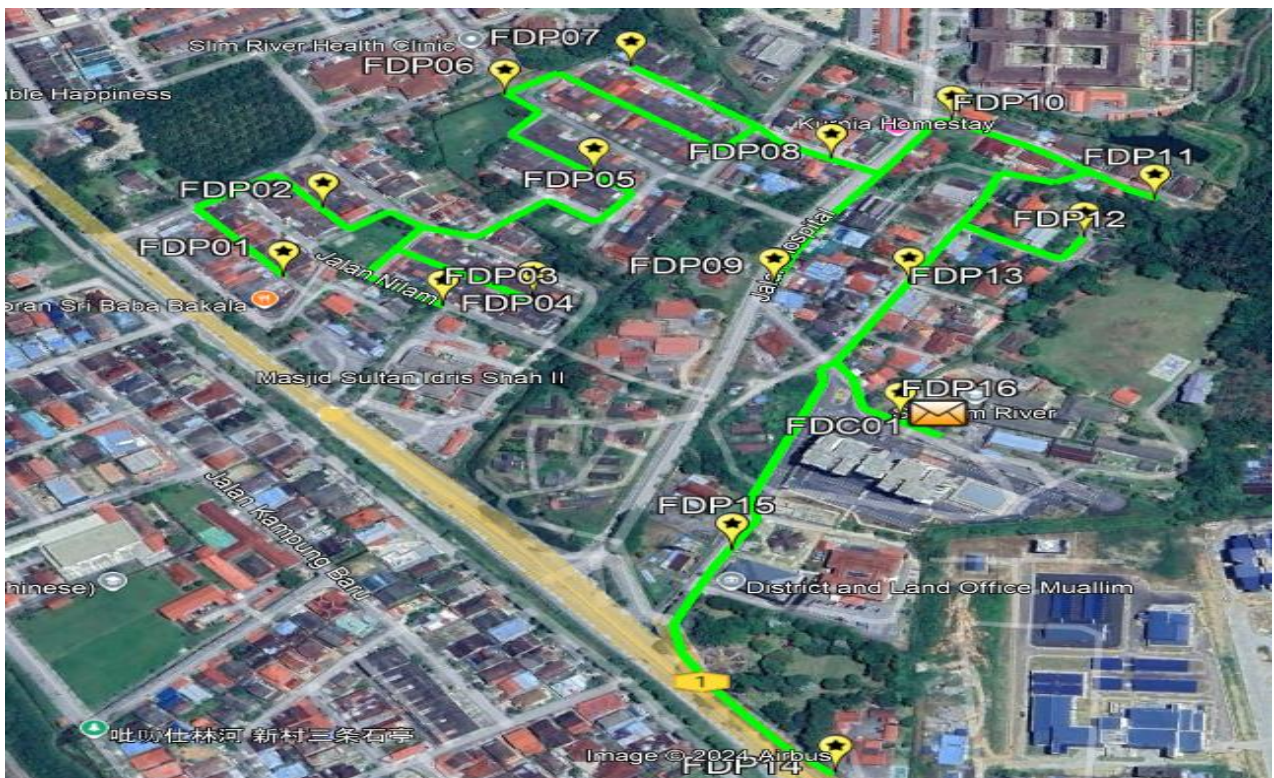
**Red Colour – Majlis Daerah Tanjung Malim**

Site Plan – KMZ Routing (All site area)

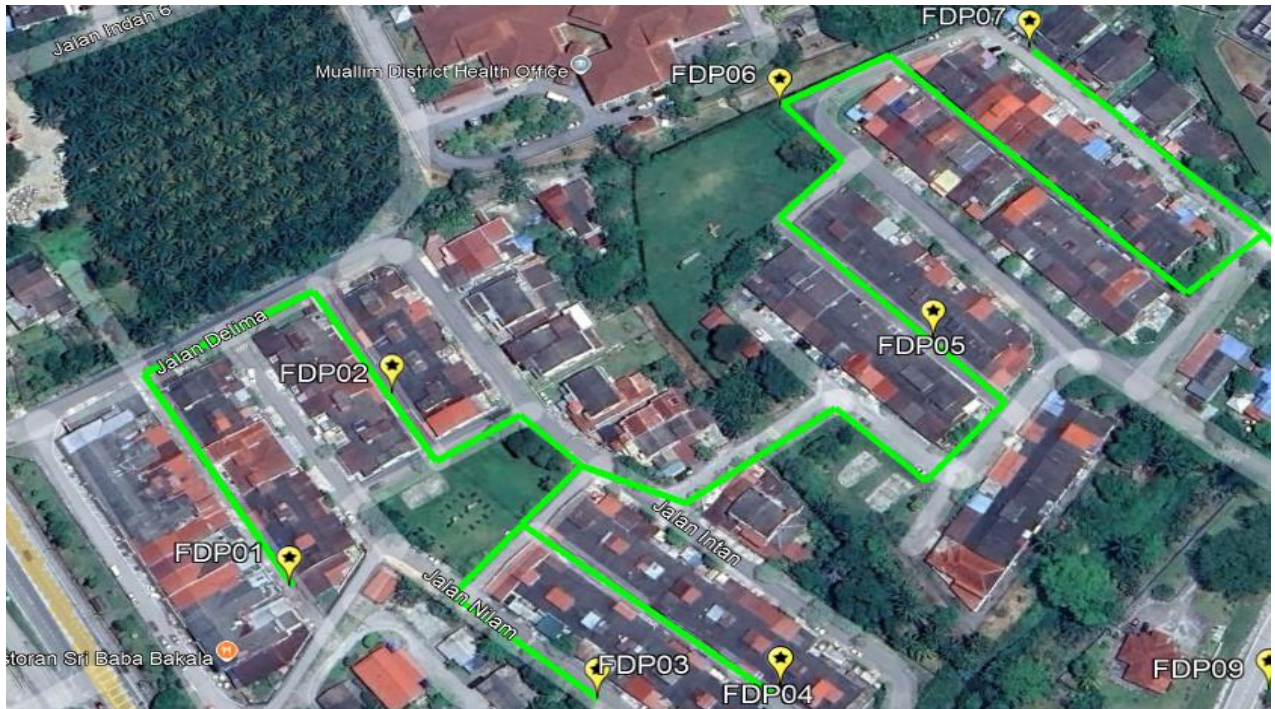
Route 1



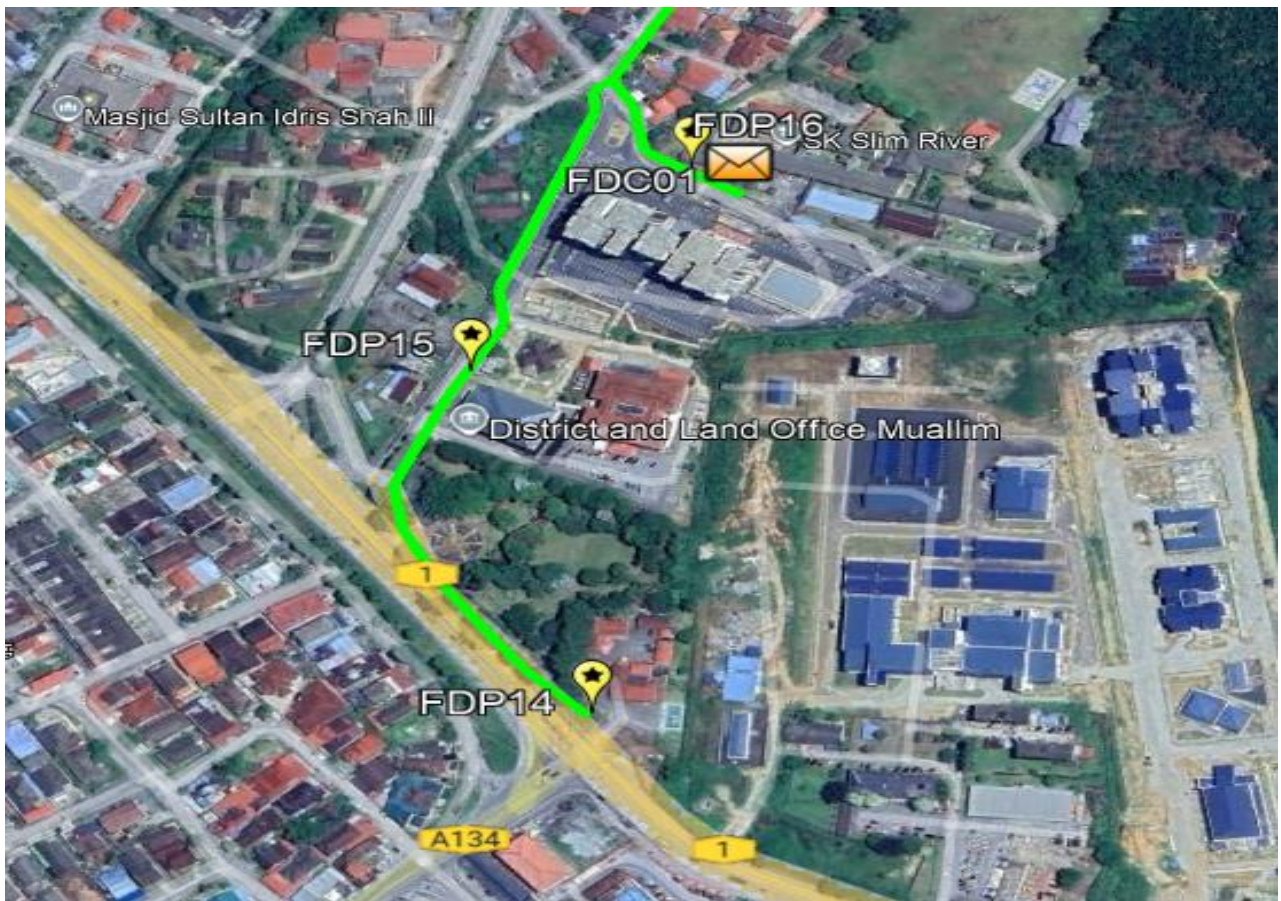
Route 1.1



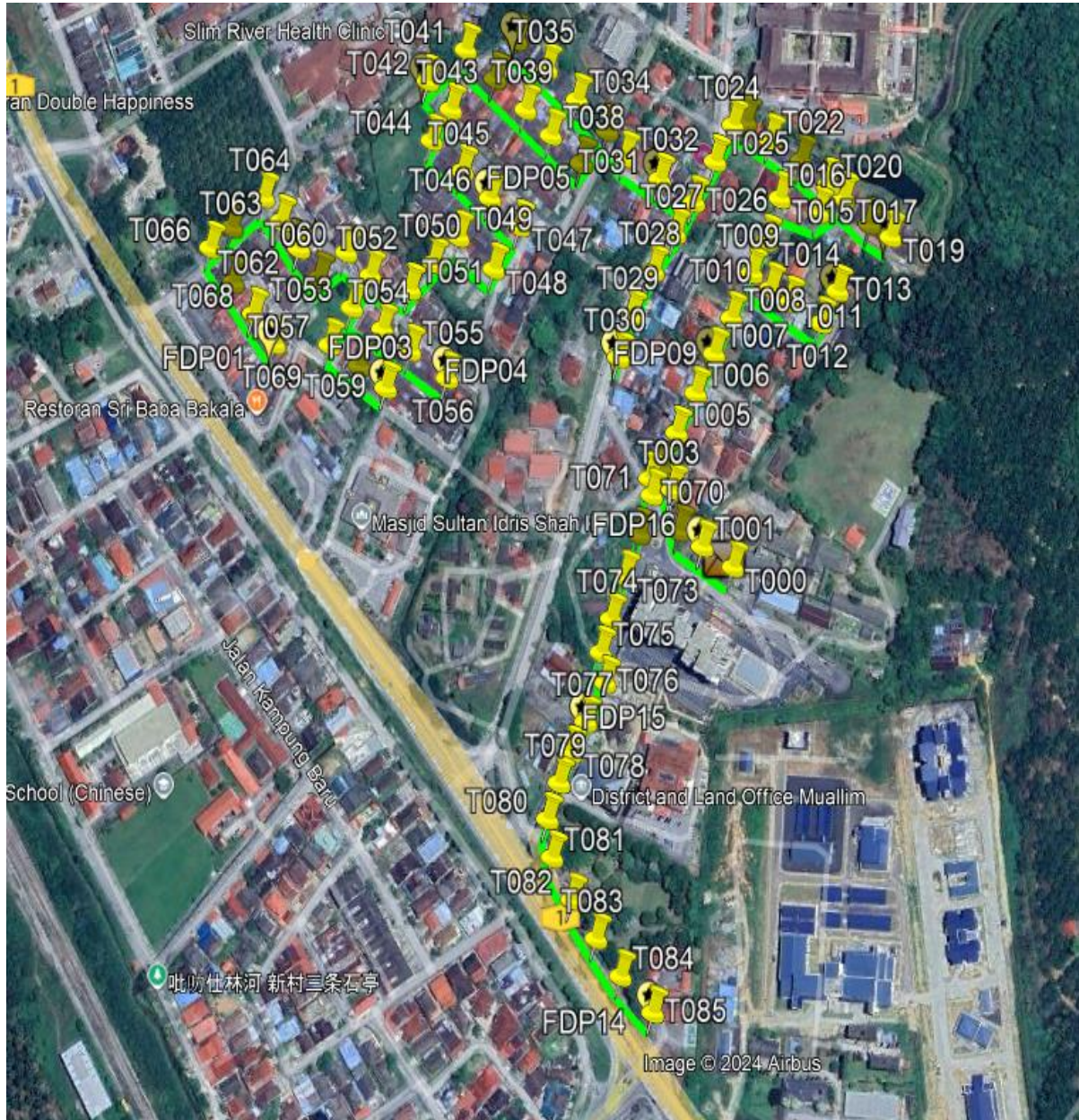
**Route 1.2**



**Route 1.3**



Site Plan – KMZ Routing (Proposed new Pole)



**Proposed New Pole Lat & Long Table**

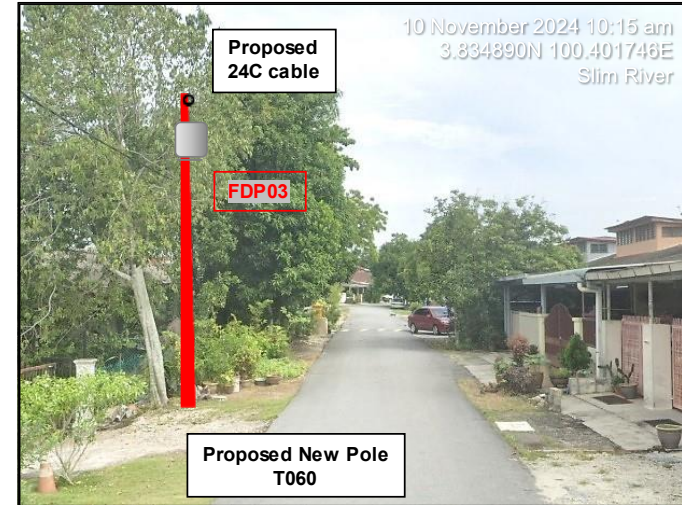
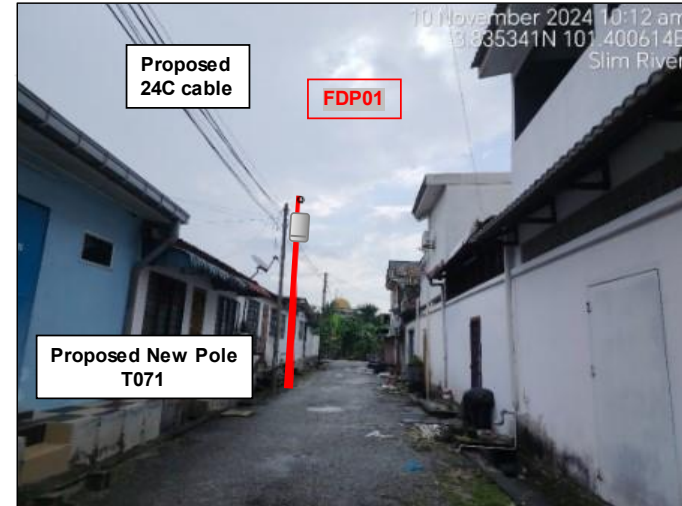
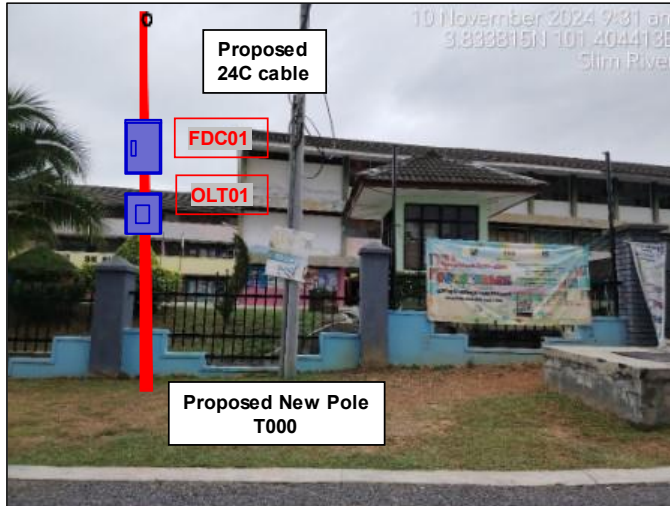
No.	Label	Pole & Manhole ID	Latitude	Longitude	Local Authority
1	OLT / FDC	T000	3.833909	101.404340	MAJLIS DAERAH TANJONG MALIM
2	FDP01	T069	3.835175	101.400764	MAJLIS DAERAH TANJONG MALIM
3	FDP02	T062	3.835803	101.400917	MAJLIS DAERAH TANJONG MALIM
4	FDP03	T059	3.834933	101.401627	MAJLIS DAERAH TANJONG MALIM
5	FDP04	T056	3.835021	101.402092	MAJLIS DAERAH TANJONG MALIM
6	FDP05	T046	3.836208	101.402360	MAJLIS DAERAH TANJONG MALIM
7	FDP06	T042	3.836944	101.401846	MAJLIS DAERAH TANJONG MALIM
8	FDP07	T036	3.837244	101.402506	MAJLIS DAERAH TANJONG MALIM
9	FDP08	T031	3.836399	101.403649	MAJLIS DAERAH TANJONG MALIM
10	FDP09	T030	3.835224	101.403395	MAJLIS DAERAH TANJONG MALIM
11	FDP10	T023	3.836807	101.404286	MAJLIS DAERAH TANJONG MALIM
12	FDP11	T019	3.836118	101.405431	MAJLIS DAERAH TANJONG MALIM
13	FDP12	T013	3.835745	101.405045	MAJLIS DAERAH TANJONG MALIM
14	FDP13	T007	3.835288	101.404124	MAJLIS DAERAH TANJONG MALIM
15	FDP14	T085	3.830982	101.403882	JKR DAERAH MUALLIM
16	FDP15	T077	3.832845	101.403271	MAJLIS DAERAH TANJONG MALIM
17	FDP16	T001	3.834030	101.404099	MAJLIS DAERAH TANJONG MALIM
18	CL01	T052	3.835657	101.401474	MAJLIS DAERAH TANJONG MALIM
19	CL02	T033	3.836692	101.403230	MAJLIS DAERAH TANJONG MALIM
20	CL03	T026	3.836266	101.403917	MAJLIS DAERAH TANJONG MALIM
21	CL04	T009	3.835827	101.404384	MAJLIS DAERAH TANJONG MALIM
22	CL05	T004	3.834526	101.403755	MAJLIS DAERAH TANJONG MALIM

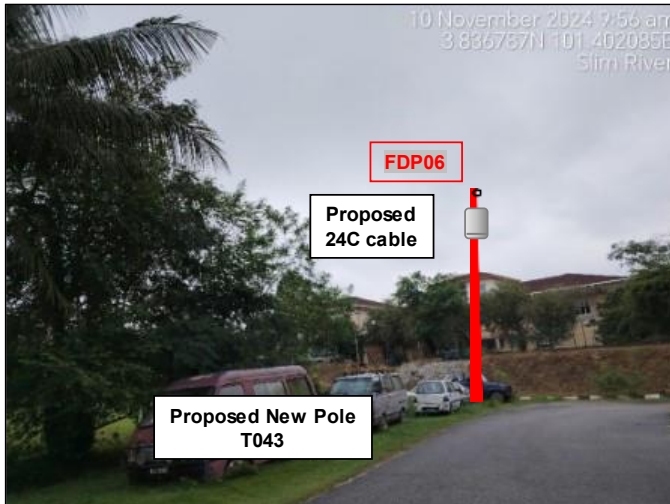
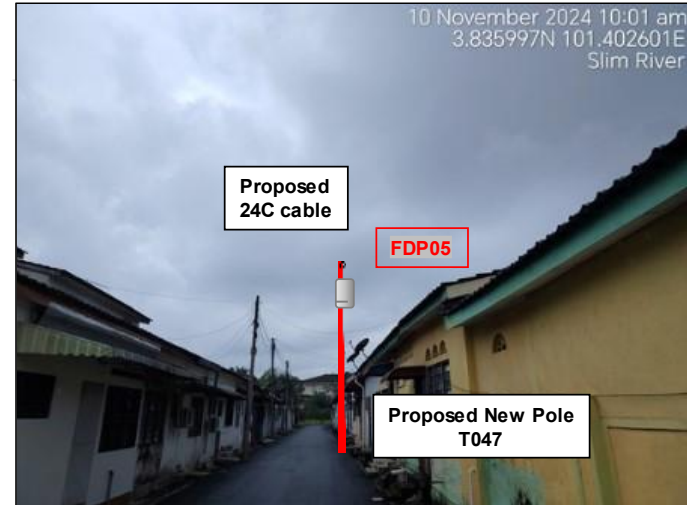
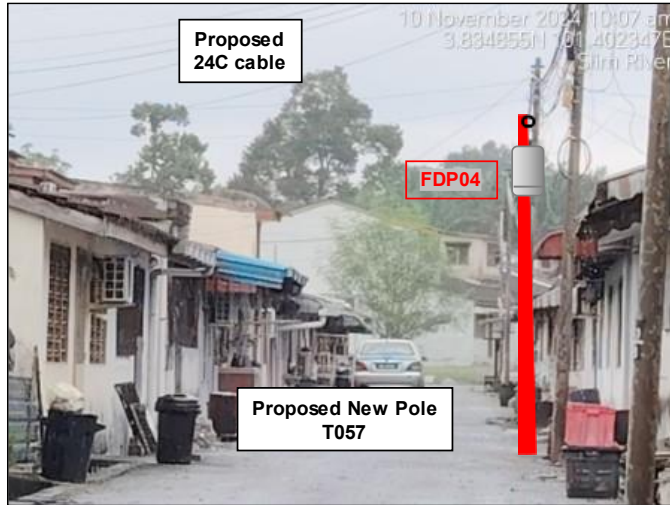
**Overall Pole (Proposed New)**

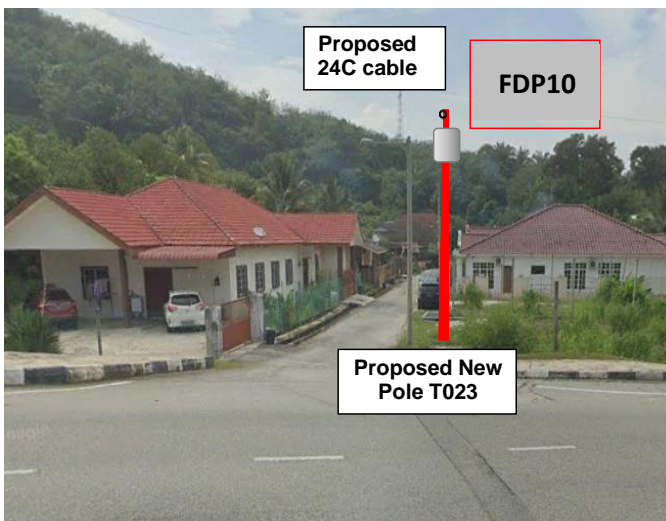
Pole & Manhole ID	Distance	Latitude	Longitude	Local Authority
T000	0	3.833909	101.404340	MAJLIS DAERAH TANJONG MALIM
T001	30	3.834030	101.404099	MAJLIS DAERAH TANJONG MALIM
T002	23	3.834124	101.403918	MAJLIS DAERAH TANJONG MALIM
T003	30	3.834387	101.403852	MAJLIS DAERAH TANJONG MALIM
T004	20	3.834526	101.403755	MAJLIS DAERAH TANJONG MALIM
T005	30	3.834760	101.403865	MAJLIS DAERAH TANJONG MALIM
T006	33	3.835024	101.403997	MAJLIS DAERAH TANJONG MALIM
T007	33	3.835288	101.404124	MAJLIS DAERAH TANJONG MALIM
T008	30	3.835527	101.404245	MAJLIS DAERAH TANJONG MALIM
T009	37	3.835827	101.404384	MAJLIS DAERAH TANJONG MALIM
T010	20	3.835733	101.404534	MAJLIS DAERAH TANJONG MALIM
T011	20	3.835652	101.404684	MAJLIS DAERAH TANJONG MALIM
T012	30	3.835530	101.404929	MAJLIS DAERAH TANJONG MALIM
T013	28	3.835745	101.405045	MAJLIS DAERAH TANJONG MALIM
T014	27	3.836043	101.404486	MAJLIS DAERAH TANJONG MALIM
T015	33	3.836325	101.404571	MAJLIS DAERAH TANJONG MALIM
T016	35	3.836247	101.404869	MAJLIS DAERAH TANJONG MALIM
T017	25	3.836354	101.405060	MAJLIS DAERAH TANJONG MALIM
T018	29	3.836194	101.405267	MAJLIS DAERAH TANJONG MALIM
T019	21	3.836118	101.405431	MAJLIS DAERAH TANJONG MALIM
T020	16	3.836435	101.404940	MAJLIS DAERAH TANJONG MALIM
T021	30	3.836577	101.404721	MAJLIS DAERAH TANJONG MALIM
T022	30	3.836698	101.404478	MAJLIS DAERAH TANJONG MALIM
T023	25	3.836807	101.404286	MAJLIS DAERAH TANJONG MALIM
T024	25	3.836937	101.404046	MAJLIS DAERAH TANJONG MALIM
T025	31	3.836539	101.404064	MAJLIS DAERAH TANJONG MALIM
T026	34	3.836266	101.403917	MAJLIS DAERAH TANJONG MALIM
T027	28	3.836053	101.403784	MAJLIS DAERAH TANJONG MALIM
T028	33	3.835801	101.403631	MAJLIS DAERAH TANJONG MALIM
T029	38	3.835501	101.403479	MAJLIS DAERAH TANJONG MALIM
T030	32	3.835224	101.403395	MAJLIS DAERAH TANJONG MALIM
T031	34	3.836399	101.403649	MAJLIS DAERAH TANJONG MALIM
T032	33	3.836528	101.403376	MAJLIS DAERAH TANJONG MALIM
T033	25	3.836692	101.403230	MAJLIS DAERAH TANJONG MALIM
T034	34	3.836882	101.402990	MAJLIS DAERAH TANJONG MALIM
T035	35	3.837070	101.402748	MAJLIS DAERAH TANJONG MALIM
T036	33	3.837244	101.402506	MAJLIS DAERAH TANJONG MALIM
T037	33	3.836472	101.403045	MAJLIS DAERAH TANJONG MALIM
T038	34	3.836641	101.402802	MAJLIS DAERAH TANJONG MALIM
T039	28	3.836799	101.402599	MAJLIS DAERAH TANJONG MALIM
T040	35	3.836986	101.402356	MAJLIS DAERAH TANJONG MALIM
T041	34	3.837164	101.402121	MAJLIS DAERAH TANJONG MALIM
T042	39	3.836944	101.401846	MAJLIS DAERAH TANJONG MALIM
T043	29	3.836770	101.402029	MAJLIS DAERAH TANJONG MALIM
T044	29	3.836559	101.401893	MAJLIS DAERAH TANJONG MALIM

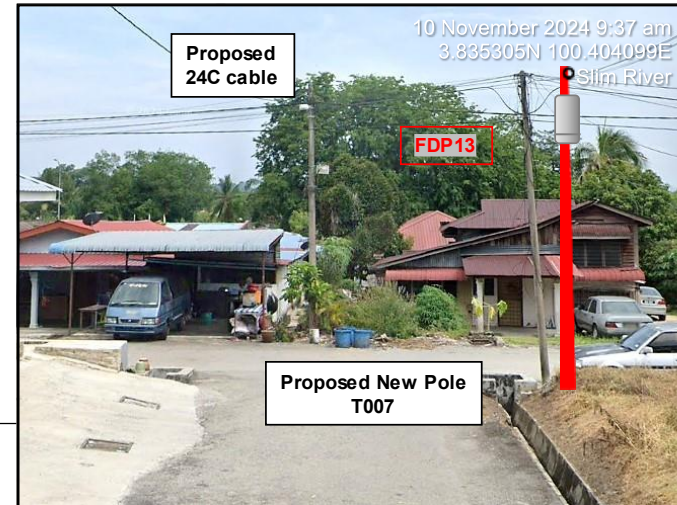
T045	34	3.836373	101.402140	MAJLIS DAERAH TANJONG MALIM
T046	31	3.836208	101.402360	MAJLIS DAERAH TANJONG MALIM
T047	32	3.836037	101.402592	MAJLIS DAERAH TANJONG MALIM
T048	38	3.835749	101.402412	MAJLIS DAERAH TANJONG MALIM
T049	29	3.835944	101.402132	MAJLIS DAERAH TANJONG MALIM
T050	28	3.835762	101.401948	MAJLIS DAERAH TANJONG MALIM
T051	35	3.835582	101.401778	MAJLIS DAERAH TANJONG MALIM
T052	35	3.835657	101.401474	MAJLIS DAERAH TANJONG MALIM
T053	29	3.835441	101.401342	MAJLIS DAERAH TANJONG MALIM
T054	31	3.835315	101.401583	MAJLIS DAERAH TANJONG MALIM
T055	29	3.835184	101.401802	MAJLIS DAERAH TANJONG MALIM
T056	37	3.835021	101.402092	MAJLIS DAERAH TANJONG MALIM
T057	30	3.835189	101.401183	MAJLIS DAERAH TANJONG MALIM
T058	30	3.835066	101.401417	MAJLIS DAERAH TANJONG MALIM
T059	28	3.834933	101.401627	MAJLIS DAERAH TANJONG MALIM
T060	27	3.835798	101.401280	MAJLIS DAERAH TANJONG MALIM
T061	30	3.835617	101.401081	MAJLIS DAERAH TANJONG MALIM
T062	28	3.835803	101.400917	MAJLIS DAERAH TANJONG MALIM
T063	25	3.835974	101.400771	MAJLIS DAERAH TANJONG MALIM
T064	23	3.836121	101.400631	MAJLIS DAERAH TANJONG MALIM
T065	35	3.835913	101.400398	MAJLIS DAERAH TANJONG MALIM
T066	24	3.835773	101.400240	MAJLIS DAERAH TANJONG MALIM
T067	32	3.835555	101.400427	MAJLIS DAERAH TANJONG MALIM
T068	28	3.835361	101.400592	MAJLIS DAERAH TANJONG MALIM
T069	29	3.835175	101.400764	MAJLIS DAERAH TANJONG MALIM
T070	12	3.834451	101.403675	MAJLIS DAERAH TANJONG MALIM
T071	12	3.834344	101.403695	MAJLIS DAERAH TANJONG MALIM
T072	35	3.834086	101.403613	MAJLIS DAERAH TANJONG MALIM
T073	35	3.833803	101.403518	MAJLIS DAERAH TANJONG MALIM
T074	30	3.833524	101.403430	MAJLIS DAERAH TANJONG MALIM
T075	22	3.833302	101.403361	MAJLIS DAERAH TANJONG MALIM
T076	25	3.833108	101.403404	MAJLIS DAERAH TANJONG MALIM
T077	32	3.832845	101.403271	MAJLIS DAERAH TANJONG MALIM
T078	27	3.832640	101.403168	MAJLIS DAERAH TANJONG MALIM
T079	25	3.832437	101.403088	MAJLIS DAERAH TANJONG MALIM
T080	30	3.832197	101.403012	MAJLIS DAERAH TANJONG MALIM
T081	28	3.831950	101.403060	JKR DAERAH MUALLIM
T082	35	3.831683	101.403227	JKR DAERAH MUALLIM
T083	35	3.831440	101.403424	JKR DAERAH MUALLIM
T084	35	3.831206	101.403624	JKR DAERAH MUALLIM
T085	38	3.830982	101.403882	JKR DAERAH MUALLIM

Site Photos – Proposed to install pole











3rd Parties Dependencies

No.	Local Council/ Authority	Remark
1	JKR Daerah Muallim	
2	Majlis Daerah Tanjung Malim	
3		
4		
5		
6		



12C FOC	Installed 1:4 / 1:8 / 1:32 splitter	Installed Pole (9m)	Suspension	87	New Manhole (PIT)	Micro-Trenching (Meter)	MH1	MH NO.
24C FOC	2730m Installed Patch Cord	Installed Pole (7.5M)	Tension	164	New Manhole(JRC7)	Temporary Infra (Meter)	TKS-1	Existing TNB Pole NO.
48C FOC	FDC	Installed Pole (6.7M)	Pole Ring	16	FDP Boundary	Loop / Coil (Meter)	P001	New Pole NO.
96C FOC	Closure	Existing TNB Pole	FDP with (1:8) splitter	16	HDD (Meter)	Active Outdoor Cabinet	CL01	Closure NO.
144C FOC	Existing Closure	Installed Riser	Existing Manhole		Open Cut (Meter)	FDC NO.	DPI	FDP NO.

ACTUAL HOMEPASS :

KEY PLAN:

PROJECT OWNER:



PRIVASAT

MAIN CONTRACTOR:



A member of OCK Group Berhad

SUB-CONTRACTOR:

PROJECT TITLE:

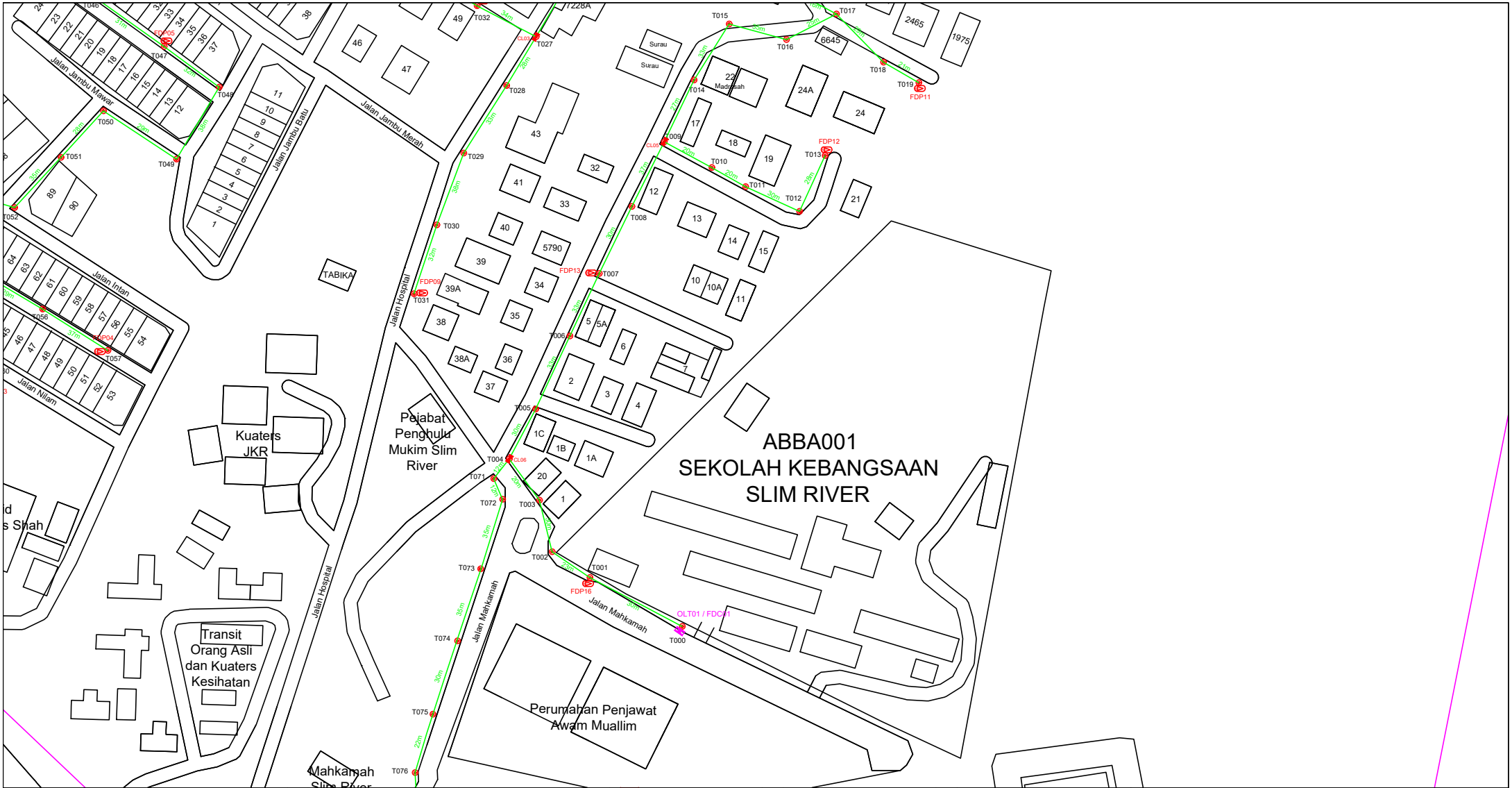
CONTRACTOR FOR SURVEY, TECHNICAL PROPOSAL AND WAYLEAVE & PERMIT APPROVAL -POP2 PROJECT

DRAWING TITLE:

Construction Drawing  
ABBA001  
SEK.KEBANGSAAN SLIM RIVER

PROJECT PHASE:  
POP 2

Design By :	Date :	20/11/2024
Drawn By :	Scale :	NTS
Checked By :	Job Number :	JOB/NUMBER
DRAWING NUMBER :	Sheet :	1/6
ABBA001-CD-01		Size : A3
THIS PRINT AND ITS COPYRIGHT ARE THE PROPERTY OF STEADCOM SDN BHD		



12C FOC	Installed 1:4 / 1:8 / 1:32 splitter	Installed Pole (9m)	Suspension	New Manhole (PIT)	Micro-Trenching (Meter)	MH1	MH NO.	
24C FOC	Installed Patch Cord	Installed Pole (7.5M)	Tension	New Manhole(JRC7)	Temporary Infra (Meter)	TKS-1	Existing TNB Pole NO.	
48C FOC	FDC	Installed Pole (6.7M)	Pole Ring	FDP Boundary	Loop / Coil (Meter)	P001	New Pole NO.	
96C FOC	Closure	Existing TNB Pole	FDP with (1:8) splitter	HDD (Meter)	#	CL01	Closure NO.	
144C FOC	Existing Closure	Installed Riser	Existing Manhole	Open Cut (Meter)	C01	FDC NO.	DPI	FDP NO.

ACTUAL HOMEPASS :

KEY PLAN:

PROJECT OWNER:




MAIN CONTRACTOR:



A member of OCK Group Berhad

SUB-CONTRACTOR:

PROJECT TITLE:

CONTRACTOR FOR SURVEY, TECHNICAL PROPOSAL AND WAYLEAVE & PERMIT APPROVAL -POP2 PROJECT

DRAWING TITLE:

Construction Drawing  
ABBA001  
SEK.KEBANGSAAN SLIM RIVER

PROJECT PHASE:  
POP 2

Design By :	Date :	20/11/2024
Drawn By :	Scale :	NTS
Checked By :	Job Number :	JOB/NUMBER
DRAWING NUMBER :	Sheet :	2/6
ABBA001-CD-01		Size : A3
THIS PRINT AND ITS COPYRIGHT ARE THE PROPERTY OF STEADCOM SDN BHD		



12C FOC	Installed 1:4 / 1:8 / 1:32 splitter	Installed Pole (9m)	Suspension	87	JB30	New Manhole (PIT)	Micro-Trenching (Meter)	MH1	MH NO.	
24C FOC	Installed Patch Cord	Installed Pole (7.5M)	Tension	164	C7	New Manhole(JRC7)	Temporary Infra (Meter)	TKS-1	Existing TNB Pole NO.	
48C FOC	FDC	Installed Pole (6.7M)	Pole Ring	16		FDP Boundary	Loop / Coil (Meter)	P001	New Pole NO.	
96C FOC	Closure	Existing TNB Pole	FDP with (1:8) splitter	16		HDD (Meter)	#	Active Outdoor Cabinet	CL01	Closure NO.
144C FOC	Existing Closure	Installed Riser	Existing Manhole			Open Cut (Meter)	C01	FDC NO.	DPI	FDP NO.

ACTUAL HOMEPASS :

KEY PLAN:

PROJECT OWNER:



PRIVASAT

MAIN CONTRACTOR:



A member of OCK Group Berhad

SUB-CONTRACTOR:

PROJECT TITLE:  
 CONTRACTOR FOR SURVEY, TECHNICAL PROPOSAL AND WAYLEAVE & PERMIT APPROVAL -POP2 PROJECT

DRAWING TITLE:  
 Construction Drawing  
 ABBA001  
 SEK.KEBANGSAAN SLIM RIVER

PROJECT PHASE:  
 POP 2

Design By :	Date :	20/11/2024
Drawn By :	Scale :	NTS
Checked By :	Job Number :	JOB/NUMBER
DRAWING NUMBER :	Sheet :	3/6
ABBA001-CD-01		Size : A3
THIS PRINT AND ITS COPYRIGHT ARE THE PROPERTY OF STEADCOM SDN BHD		



12C FOC	Installed 1:4 / 1:8 / 1:32 splitter	Installed Pole (9m)	Suspension	87	EB30	New Manhole (PIT)	Micro-Trenching (Meter)	MH1	MH NO.
24C FOC 2730m	Installed Patch Cord	Installed Pole (7.5M)	Tension	164	CB7	New Manhole(JRC7)	Temporary Infra (Meter)	TKS-1	Existing TNB Pole NO.
48C FOC	FDC	Installed Pole (6.7M)	Pole Ring	16		FDP Boundary	Loop / Coil (Meter)	P001	New Pole NO.
96C FOC	Closure	Existing TNB Pole	FDP with (1:8) splitter	16		HDD (Meter)	Active Outdoor Cabinet	CL01	Closure NO.
144C FOC	Existing Closure	Installed Riser	Existing Manhole			Open Cut (Meter)	FDC NO.	DPI	FDP NO.

ACTUAL HOMEPASS :

KEY PLAN:

PROJECT OWNER:



PRIVASAT

MAIN CONTRACTOR:



A member of OCK Group Berhad

SUB-CONTRACTOR:

PROJECT TITLE:

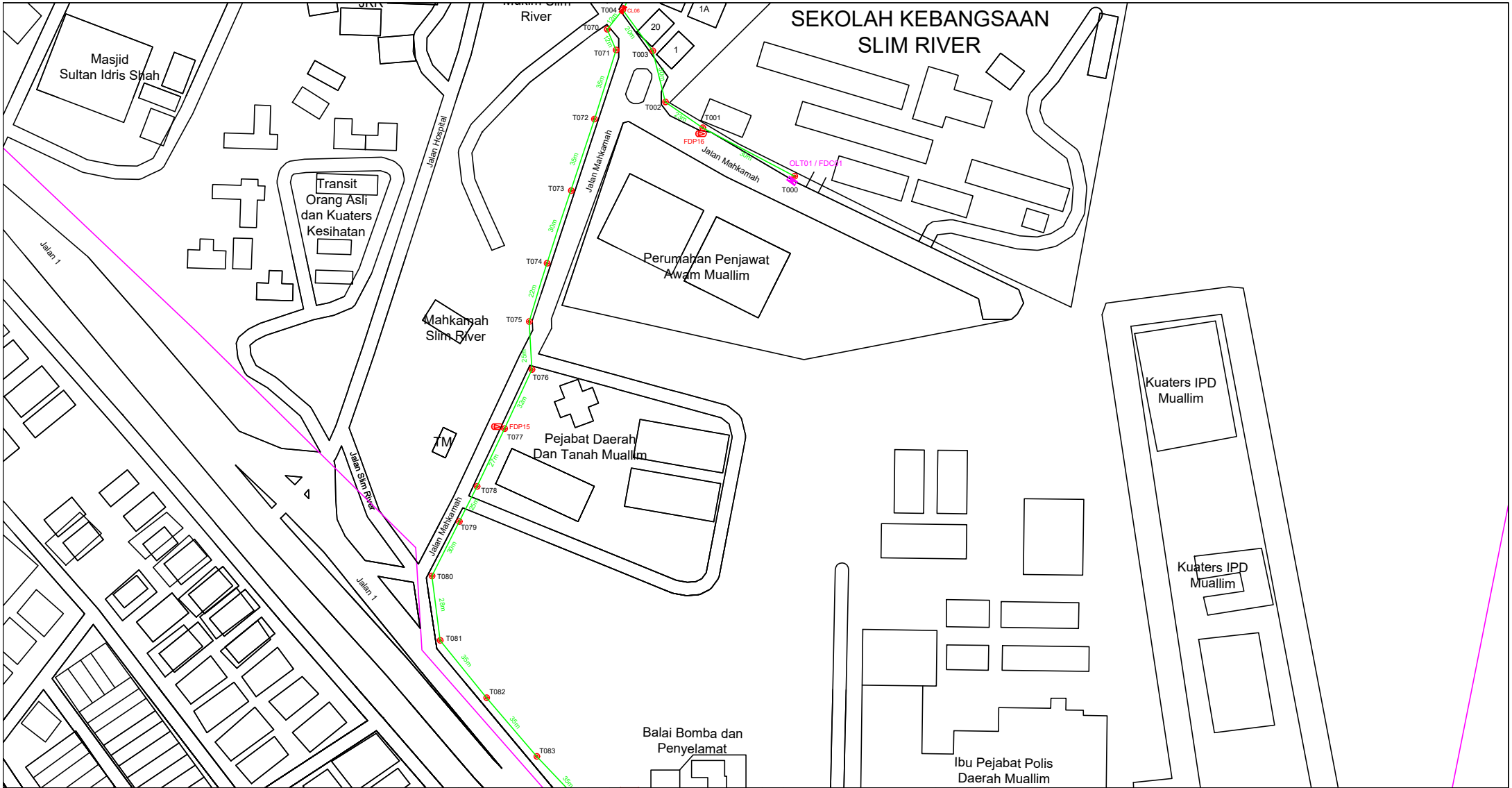
CONTRACTOR FOR SURVEY, TECHNICAL PROPOSAL AND WAYLEAVE & PERMIT APPROVAL -POP2 PROJECT

DRAWING TITLE:

Construction Drawing  
ABBA001  
SEK.KEBANGSAAN SLIM RIVER

PROJECT PHASE:  
POP 2

Design By :	Date :	20/11/2024
Drawn By :	Scale :	NTS
Checked By :	Job Number :	JOB/NUMBER
DRAWING NUMBER :	Sheet :	4/6
ABBA001-CD-01	Size :	A3
THIS PRINT AND ITS COPYRIGHT ARE THE PROPERTY OF STEADCOM SDN BHD		



12C FOC	Installed 1:4 / 1:8 / 1:32 splitter	●	Installed Pole (9m)	87	Suspension	87	JB30	New Manhole (PIT)	Micro-Trenching (Meter)	MH1	MH NO.	
24C FOC	2730m Installed Patch Cord	●	Installed Pole (7.5M)	87	Tension	164	C7	New Manhole(JRC7)	Temporary Infra (Meter)	TKS-1	Existing TNB Pole NO.	
48C FOC	FDC	1	Installed Pole (6.7M)		Pole Ring	16		FDP Boundary	Loop / Coil (Meter)	115	P001	New Pole NO.
96C FOC	Closure	6	Existing TNB Pole		FDP with (1:8) splitter	16		HDD (Meter)	#		CL01	Closure NO.
144C FOC	Existing Closure		Installed Riser		Existing Manhole			Open Cut (Meter)	C01		DPI	FDP NO.

ACTUAL HOMEPASS :

KEY PLAN:

PROJECT OWNER:



PRIVASAT

MAIN CONTRACTOR:



A member of OCK Group Berhad

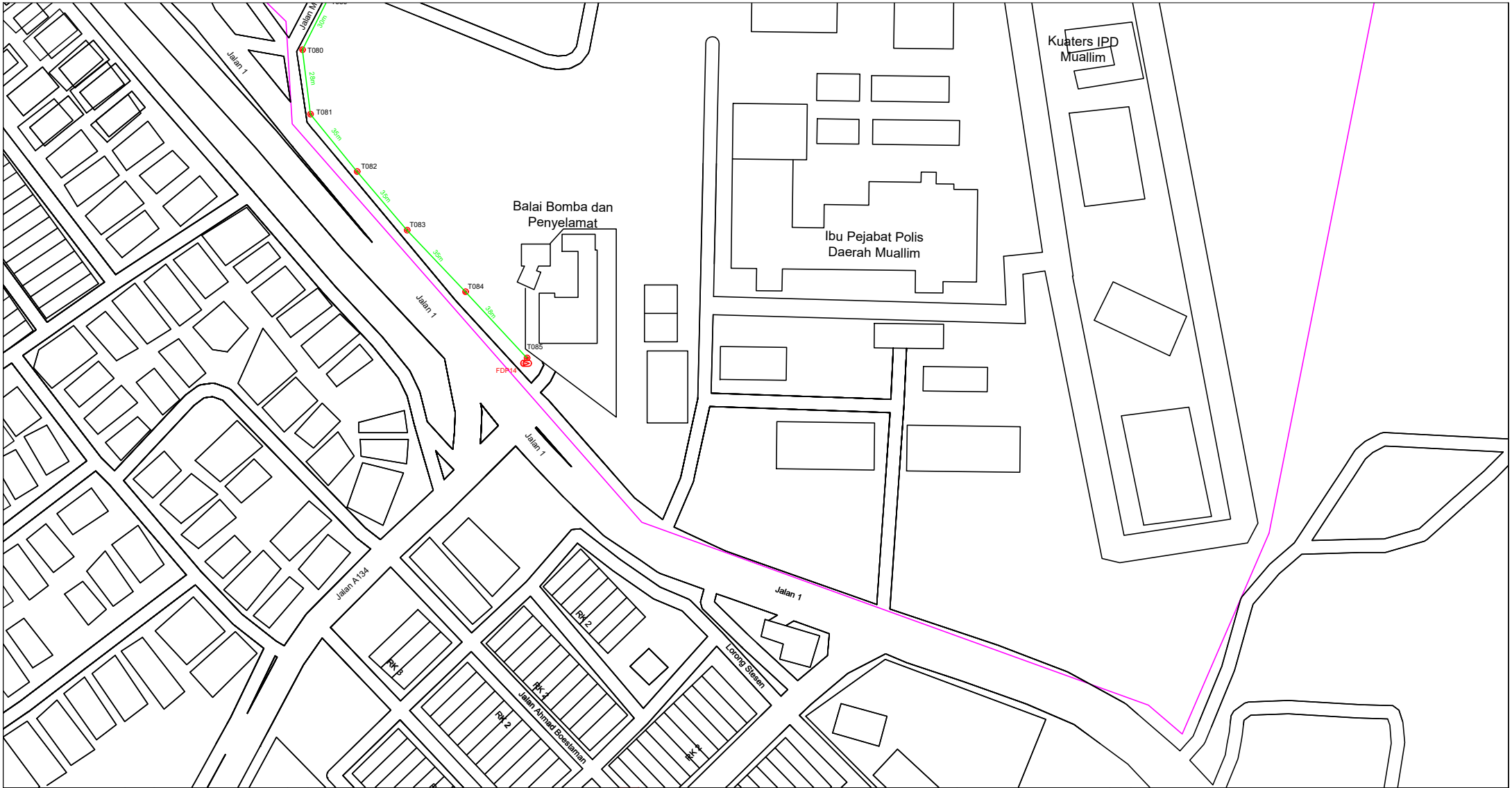
SUB-CONTRACTOR:

PROJECT TITLE:  
 CONTRACTOR FOR SURVEY, TECHNICAL PROPOSAL AND WAYLEAVE & PERMIT APPROVAL -POP2 PROJECT

DRAWING TITLE:  
 Construction Drawing  
 ABBA001  
 SEK.KEBANGSAAN SLIM RIVER

PROJECT PHASE:  
 POP 2

Design By :	Date :	20/11/2024
Drawn By :	Scale :	NTS
Checked By :	Job Number :	JOB/NUMBER
DRAWING NUMBER :	Sheet :	5/6
ABBA001-CD-01	Size :	A3
THIS PRINT AND ITS COPYRIGHT ARE THE PROPERTY OF STEADCOM SDN BHD		



12C FOC	Installed 1:4 / 1:8 / 1:32 splitter	Installed Pole (9m)	Suspension	JEB30	New Manhole (PIT)	Micro-Trenching (Meter)	MH1	MH NO.	
24C FOC 2730m	Installed Patch Cord	Installed Pole (7.5M)	Tension	JEB31	New Manhole(JRC7)	Temporary Infra (Meter)	TKS-1	Existing TNB Pole NO.	
48C FOC	FDC	Installed Pole (6.7M)	Pole Ring	C01	FDP Boundary	Loop / Coil (Meter)	P001	New Pole NO.	
96C FOC	Closure	Existing TNB Pole	FDP with (1:8) splitter		HDD (Meter)	#	Active Outdoor Cabinet	CL01	Closure NO.
144C FOC	Existing Closure	Installed Riser	Existing Manhole		Open Cut (Meter)	C01	FDC NO.	DPI	FDP NO.

ACTUAL HOMEPASS :

KEY PLAN:

PROJECT OWNER:



PRIVASAT

MAIN CONTRACTOR:



A member of OCK Group Berhad

SUB-CONTRACTOR:

PROJECT TITLE:

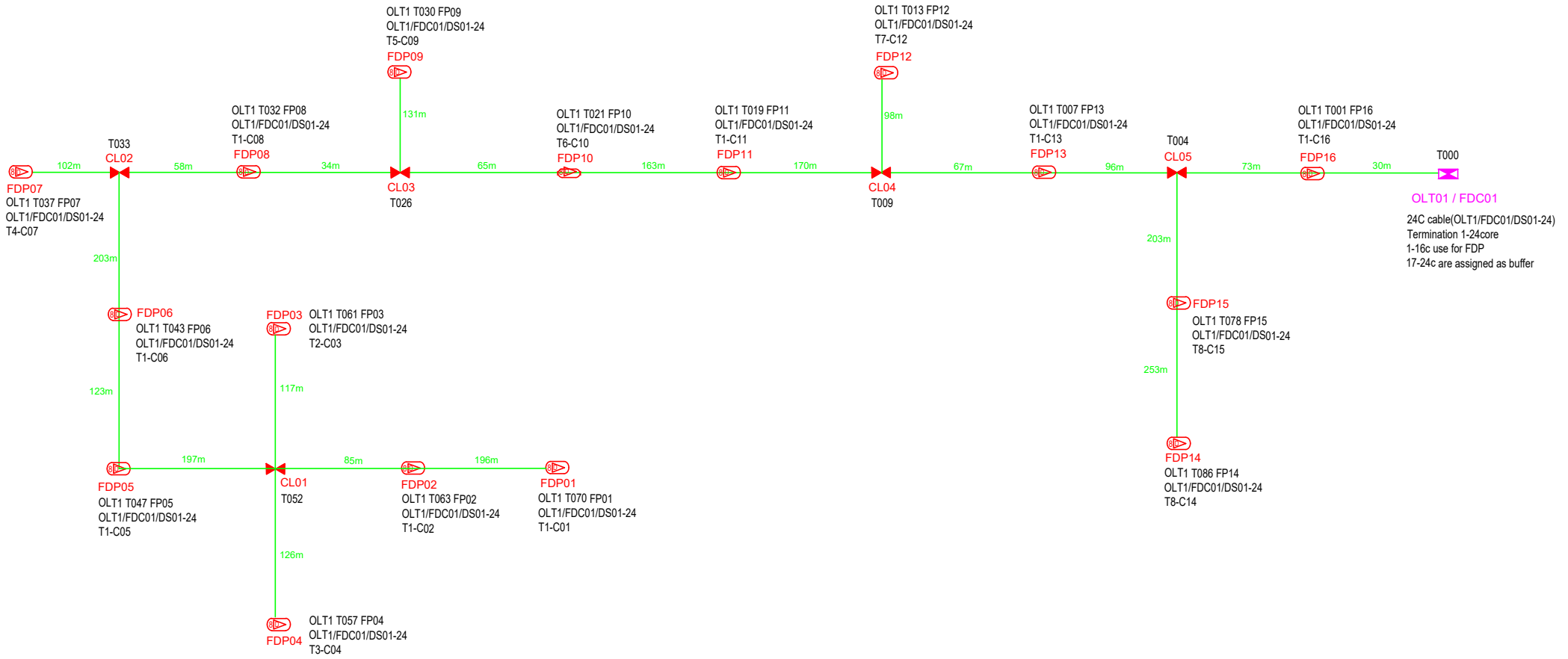
CONTRACTOR FOR SURVEY, TECHNICAL PROPOSAL AND WAYLEAVE & PERMIT APPROVAL -POP2 PROJECT

DRAWING TITLE:

Construction Drawing  
ABBA001  
SEK.KEBANGSAAN SLIM RIVER

PROJECT PHASE:  
POP 2

Design By :	Date :	20/11/2024
Drawn By :	Scale :	NTS
Checked By :	Job Number :	JOB/NUMBER
DRAWING NUMBER :	Sheet :	6/6
ABBA001-CD-01		Size : A3
THIS PRINT AND ITS COPYRIGHT ARE THE PROPERTY OF STEADCOM SDN BHD		



12C FOC	Installed 1:4 / 1:8 / 1:32 splitter	Installed Pole (9m)	Suspension	87	JB30	New Manhole (PIT)	Micro-Trenching (Meter)	MH1	MH NO.		
24C FOC	2730m Installed Patch Cord	Installed Pole (7.5M)	87 Tension	164	C7	New Manhole(JRC7)	Temporary Infra (Meter)	TKS-1	Existing TNB Pole NO.		
48C FOC	FDC	Installed Pole (6.7M)	Pole Ring	16		FDP Boundary	Loop / Coil (Meter)	115	P001	New Pole NO.	
96C FOC	Closure	Existing TNB Pole	FDP with (1:8) splitter	16		HDD (Meter)	#		Active Outdoor Cabinet	CL01	Closure NO.
144C FOC	Existing Closure	Installed Riser	Existing Manhole			Open Cut (Meter)	C01		FDC NO.	DPI	FDP NO.

ACTUAL HOMEPASS :

KEY PLAN:	PROJECT OWNER: <b>APEX COMMUNICATIONS SDN BHD</b> <b>PRIVASAT</b>	MAIN CONTRACTOR: <b>STEADCOM</b> A member of OCK Group Berhad	SUB-CONTRACTOR:	PROJECT TITLE: CONTRACTOR FOR SURVEY, TECHNICAL PROPOSAL AND WAYLEAVE & PERMIT APPROVAL -POP2 PROJECT	DRAWING TITLE: SLD Drawing ABBA001 SEK.KEBANGSAAN SLIM RIVER PROJECT PHASE: POP 2	Design By : Date : <b>20/11/2024</b>	Drawn By : Scale : <b>NTS</b>	Checked By : Job Number : <b>JOB/NUMBER</b>	DRAWING NUMBER : <b>ABBA001-CD-01</b> Sheet : <b>1/1</b>	THIS PRINT AND ITS COPYRIGHT ARE THE PROPERTY OF STEADCOM SDN BHD Size : <b>A3</b>
-----------	---	---	-----------------	--	--	---	----------------------------------	--	--	---