

TECHNICAL PROPOSAL

POP2 ABA5062 SEKOLAH KEBANGSAAN CHIKUS (D-SIDE)

Company Name : T&H PANJI EMPIRE SDN BHD
Company Address : 39A Jalan Jelapang 5, Pusat Komersial Jelapang, 30020 Ipoh, Perak Darul Ridzuan.
Prepared By : Muhamad Hasif Bin Mohamed Hanif
Date : 10 / 12 / 2024



Starting Point

Site / Boundary Name : KAMPUNG CHIKUS
Address : SEKOLAH KEBANGSAAN CHIKUS
District : LANGKAP
Postcode : 36700
State : Perak
GPS Coordinate : 4.072275, 101.121853
LRD : A

End Point

Site / Boundary Name : KAMPUNG CHIKUS
Address : SEKOLAH KEBANGSAAN CHIKUS
District : LANGKAP
Postcode : 36700
State : Perak
GPS Coordinate : 4.066331, 101.122119
LRD : B



PROJEK PENYEDIAAN DAN PENYELENGGARAAN POINT OF PRESENT (POP) FASA 2: HAB INFRASTUKTUR GENTIAN OPTIK BERHAMPIRAN DENGAN SEKOLAH, KAWASAN PERINDUSTRIAN, PREMIS KERAJAAN DAN KOMUNITI SEKITARNYA OLEH KEMENTERIAN KOMUNIKASI MALAYSIA - ZON UTARA (KKMM.400-11/17/132(1))



1.0 WORK SUMMARY

NO	PROPOSED DISTANCE AND METHOD	UNIT	QUANTITY
1	Horizontal Directional Drilling (HDD)	m	50m
2	Carriage Way Open Trench (CW)	m	0
3	Grass Verge Open Trenching (GV)	m	0
4	Micro Trenching (MT)	m	0
Total			50m

NO	OTHER INFORMATION	UNIT	QUANTITY
1	Installation of Short Span ADSS Fiber Cables	m	4200
2	Install New Pole	m	119
3	Install New JRC7 Manhole	m	2
4	Install GI Riser 100mm	ea	0
5	Install Fiber Distribution Point	ea	13
6	Closure (Splicing, Termination and Testing)	ea	3



PROJEK PENYEDIAAN DAN PENYELENGGARAAN POINT OF PRESENT (POP) FASA 2: HAB INFRASTUKTUR GENTIAN OPTIK BERHAMPIRAN DENGAN SEKOLAH, KAWASAN PERINDUSTRIAN, PREMIS KERAJAAN DAN KOMUNITI SEKITARNYA OLEH KEMENTERIAN KOMUNIKASI MALAYSIA - ZON UTARA (KKMM.400-11/17/132(1))



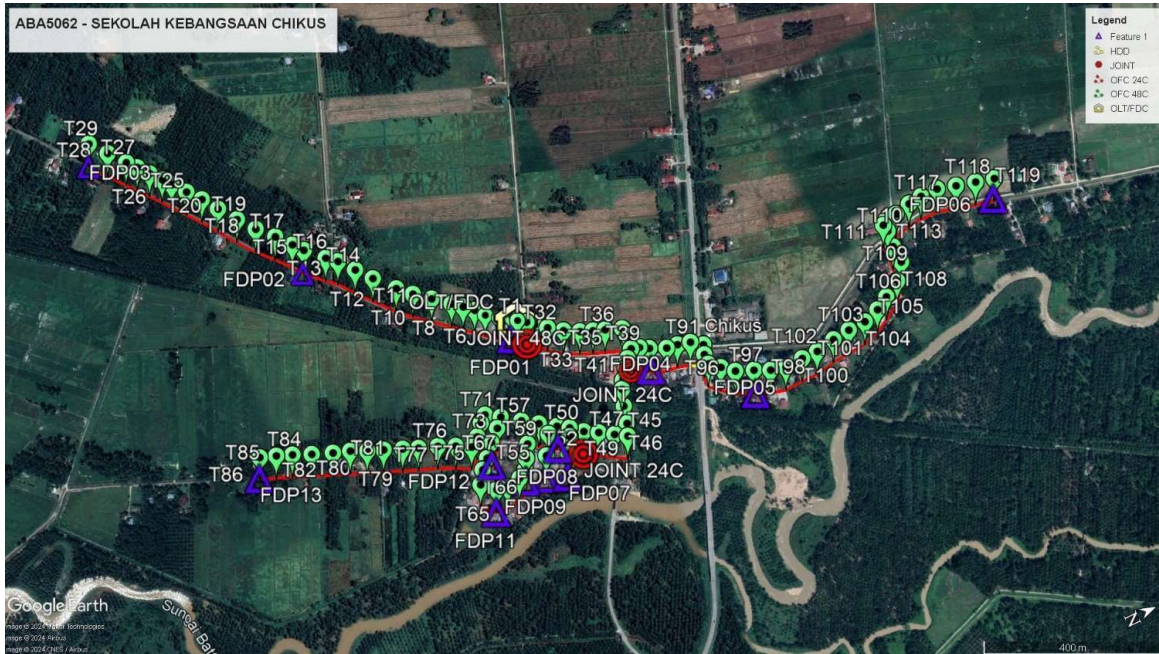
2.0 LOCAL AUTHORITY SUMMARY

Daerah Teluk Intan

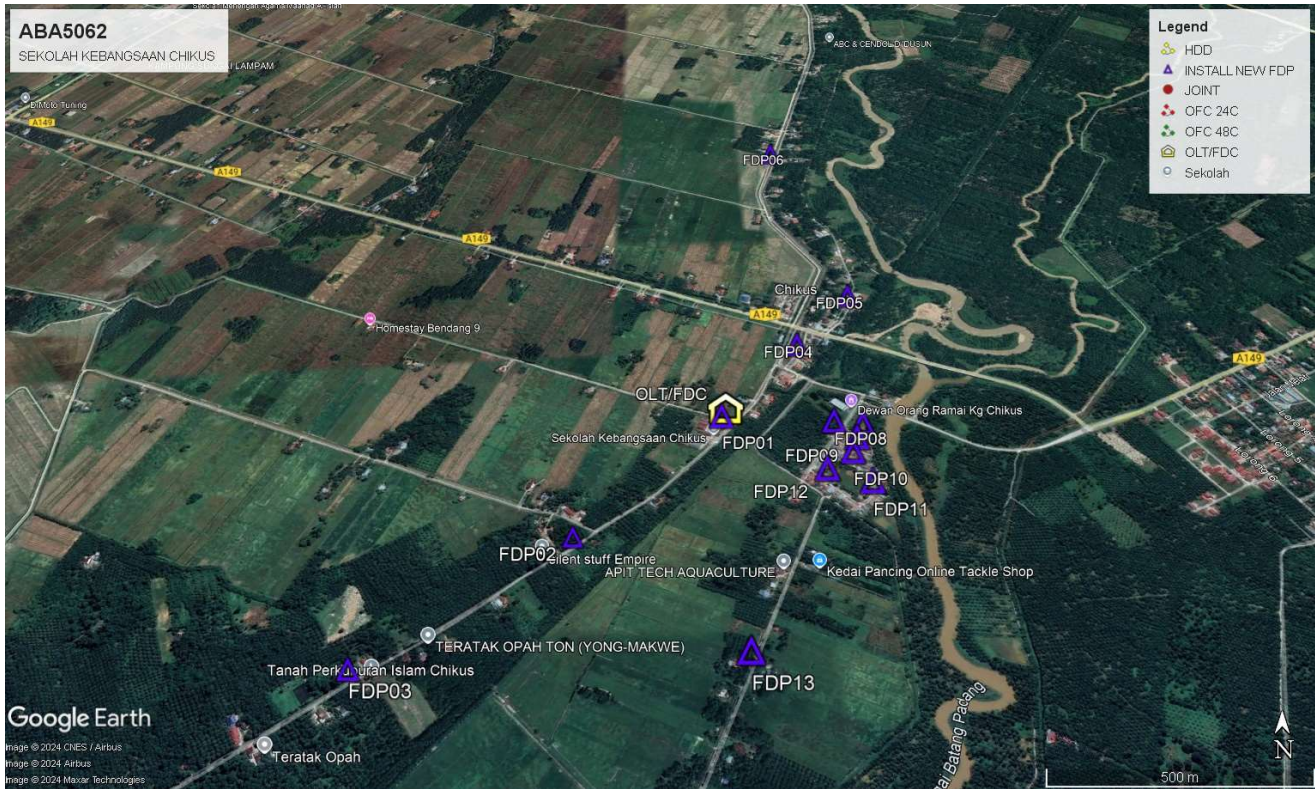
NO	ITEMS	Owner	Quantity	Distance (m)
1	HDD	JKR	1	50m
		Majlis	-	-
		Estate / Private Land	-	-
2	New Pole	JKR	3	50m
		Majlis	116	4100m
		Estate / Private Land	-	-
Total Distance (m)				4200m

3.0 SITE PLAN (KMZ)

3.1 Overview Site Area



3.2 Overview FDP Location



3.3 Site Plan - KMZ Routing (All Local Authority)



Red Colour – JKR Teluk Intan

Blue Colour – Majlis Perbandaran Teluk Intan

4.0 PROPOSED NEW MANHOLE

Proposed New Manhole Coordinate					
No.	Manhole Number	Distance (m)	Latitude	Longitude	Local Authority
1	MH01	50	4.075267	101.123854	JKR TELUK INTAN
2	MH02	50	4.075483	101.124015	JKR TELUK INTAN

5.0 PROPOSED NEW POLE

Proposed New Pole Coordinate					
No.	Pole Number	Distance (m)	Latitude	Longitude	Local Authority
1	T001	13	4.072303	101.121867	MAJLIS PERBANDARAN TELUK INTAN
2	T002 (FDP 01)	29	4.072218	101.121796	MAJLIS PERBANDARAN TELUK INTAN
3	T003	32	4.071992	101.121662	MAJLIS PERBANDARAN TELUK INTAN
4	T004	27	4.071757	101.121480	MAJLIS PERBANDARAN TELUK INTAN
5	T005	30	4.071588	101.121329	MAJLIS PERBANDARAN TELUK INTAN
6	T006	28	4.071407	101.121166	MAJLIS PERBANDARAN TELUK INTAN
7	T007	45	4.071223	101.121006	MAJLIS PERBANDARAN TELUK INTAN
8	T008	41	4.070902	101.120736	MAJLIS PERBANDARAN TELUK INTAN
9	T009	37	4.070599	101.120482	MAJLIS PERBANDARAN TELUK INTAN
10	T010	50	4.070345	101.120231	MAJLIS PERBANDARAN TELUK INTAN
11	T011	44	4.070008	101.119840	MAJLIS PERBANDARAN TELUK INTAN
12	T012	43	4.069762	101.119524	MAJLIS PERBANDARAN TELUK INTAN
13	T013	30	4.069521	101.119214	MAJLIS PERBANDARAN TELUK INTAN
14	T014	49	4.069325	101.119044	MAJLIS PERBANDARAN TELUK INTAN
15	T015 (FDP 02)	30	4.068994	101.118703	MAJLIS PERBANDARAN TELUK INTAN
16	T016	41	4.068835	101.118501	MAJLIS PERBANDARAN TELUK INTAN
17	T017	44	4.068597	101.118205	MAJLIS PERBANDARAN TELUK INTAN
18	T018	47	4.068313	101.117895	MAJLIS PERBANDARAN TELUK INTAN
19	T019	49	4.068049	101.117546	MAJLIS PERBANDARAN TELUK INTAN
20	T020	44	4.067782	101.117170	MAJLIS PERBANDARAN TELUK INTAN
21	T021	39	4.067563	101.116842	MAJLIS PERBANDARAN TELUK INTAN
22	T022	37	4.067343	101.116563	MAJLIS PERBANDARAN TELUK INTAN
23	T023	27	4.067138	101.116293	MAJLIS PERBANDARAN TELUK INTAN
24	T024	32	4.067010	101.116122	MAJLIS PERBANDARAN TELUK INTAN
25	T025	30	4.066838	101.115901	MAJLIS PERBANDARAN TELUK INTAN
26	T026	29	4.066671	101.115684	MAJLIS PERBANDARAN TELUK INTAN
27	T027	46	4.066518	101.115502	MAJLIS PERBANDARAN TELUK INTAN
28	T028	47	4.066263	101.115169	MAJLIS PERBANDARAN TELUK INTAN
29	T029 (FDP 03)	45	4.066006	101.114831	MAJLIS PERBANDARAN TELUK INTAN
30	T030	20	4.072434	101.122017	MAJLIS PERBANDARAN TELUK INTAN
31	T031	30	4.072557	101.122135	MAJLIS PERBANDARAN TELUK INTAN



PROJEK PENYEDIAAN DAN PENYELENGGARAAN POINT OF PRESENT (POP) FASA 2: HAB INFRASTUKTUR GENTIAN OPTIK BERHAMPIRAN DENGAN SEKOLAH, KAWASAN PERINDUSTRIAN, PREMIS KERAJAAN DAN KOMUNITI SEKITARNYA OLEH KEMENTERIAN KOMUNIKASI MALAYSIA - ZON UTARA (KKMM.400-11/17/132(1))



No.	Pole Number	Distance (m)	Latitude	Longitude	Local Authority
33	T033	38	4.073038	101.122503	MAJLIS PERBANDARAN TELUK INTAN
32	T032	36	4.072771	101.122307	MAJLIS PERBANDARAN TELUK INTAN
34	T034	30	4.073331	101.122667	MAJLIS PERBANDARAN TELUK INTAN
35	T035	30	4.073579	101.122769	MAJLIS PERBANDARAN TELUK INTAN
36	T036	39	4.073810	101.122859	MAJLIS PERBANDARAN TELUK INTAN
37	T037	23	4.074136	101.122991	MAJLIS PERBANDARAN TELUK INTAN
38	T038	29	4.074178	101.123185	MAJLIS PERBANDARAN TELUK INTAN
39	T039	24	4.074117	101.123442	MAJLIS PERBANDARAN TELUK INTAN
40	T040	24	4.073963	101.123587	MAJLIS PERBANDARAN TELUK INTAN
41	T041	27	4.073842	101.13754	MAJLIS PERBANDARAN TELUK INTAN
42	T042	26	4.073685	101.123951	MAJLIS PERBANDARAN TELUK INTAN
43	T043	37	4.073590	101.124110	MAJLIS PERBANDARAN TELUK INTAN
44	T044	38	4.073472	101.124435	MAJLIS PERBANDARAN TELUK INTAN
45	T045	29	4.073376	101.124781	MAJLIS PERBANDARAN TELUK INTAN
46	T046	29	4.073278	101.125021	MAJLIS PERBANDARAN TELUK INTAN
47	T047	36	4.073047	101.124872	MAJLIS PERBANDARAN TELUK INTAN
48	T048	32	4.072774	101.124696	MAJLIS PERBANDARAN TELUK INTAN
49	T049	32	4.072509	101.124543	MAJLIS PERBANDARAN TELUK INTAN
50	T050	21	4.072283	101.124348	MAJLIS PERBANDARAN TELUK INTAN
51	T051	38	4.072206	101.124506	MAJLIS PERBANDARAN TELUK INTAN
52	T052 (FDP 07)	89	4.072028	101.124822	MAJLIS PERBANDARAN TELUK INTAN
53	T053 (FDP 08)	26	4.072062	101.124204	MAJLIS PERBANDARAN TELUK INTAN
54	T054	50	4.071841	101.124273	MAJLIS PERBANDARAN TELUK INTAN
55	T055 (FDP 09)	45	4.071606	101.124652	MAJLIS PERBANDARAN TELUK INTAN
56	T056	39	4.071755	101.123996	MAJLIS PERBANDARAN TELUK INTAN
57	T057	29	4.071459	101.123787	MAJLIS PERBANDARAN TELUK INTAN
58	T058	29	4.071497	101.124041	MAJLIS PERBANDARAN TELUK INTAN
59	T059	32	4.071363	101.124269	MAJLIS PERBANDARAN TELUK INTAN
60	T060 (FDP 10)	28	4.071212	101.124522	MAJLIS PERBANDARAN TELUK INTAN
61	T061	22	4.071086	101.124728	MAJLIS PERBANDARAN TELUK INTAN
62	T062	33	4.070911	101.124828	MAJLIS PERBANDARAN TELUK INTAN
63	T063	27	4.070614	101.124883	MAJLIS PERBANDARAN TELUK INTAN
64	T064 (FDP 11)	38	4.070389	101.124832	MAJLIS PERBANDARAN TELUK INTAN
65	T065	32	4.070139	101.124599	MAJLIS PERBANDARAN TELUK INTAN
66	T066	28	4.070310	101.124343	MAJLIS PERBANDARAN TELUK INTAN
67	T067	36	4.070494	101.124169	MAJLIS PERBANDARAN TELUK INTAN
68	T068 (FDP 12)	34	4.00714	101.123911	MAJLIS PERBANDARAN TELUK INTAN
69	T069	28	4.070949	101.123709	MAJLIS PERBANDARAN TELUK INTAN
70	T070	37	4.071112	101.123534	MAJLIS PERBANDARAN TELUK INTAN

Proposed New Pole Coordinate					
No.	Pole Number	Distance (m)	Latitude	Longitude	Local Authority
71	T071	23	4.070843	101.123350	MAJLIS PERBANDARAN TELUK INTAN
72	T072	31	4.070696	101.123463	MAJLIS PERBANDARAN TELUK INTAN
73	T073	25	4.070507	101.123684	MAJLIS PERBANDARAN TELUK INTAN
74	T074	26	4.070314	101.123822	MAJLIS PERBANDARAN TELUK INTAN
75	T075	40	4.070034	101.123663	MAJLIS PERBANDARAN TELUK INTAN
76	T076	28	4.069702	101.123506	MAJLIS PERBANDARAN TELUK INTAN
77	T077	37	4.069328	101.123368	MAJLIS PERBANDARAN TELUK INTAN
78	T078	44	4.069028	101.123242	MAJLIS PERBANDARAN TELUK INTAN
79	T079	36	4.068671	101.123086	MAJLIS PERBANDARAN TELUK INTAN
80	T080	38	4.068361	101.122961	MAJLIS PERBANDARAN TELUK INTAN
81	T081	37	4.068048	101.122810	MAJLIS PERBANDARAN TELUK INTAN
82	T082	46	4.067713	101.122690	MAJLIS PERBANDARAN TELUK INTAN
83	T083	43	4.067310	101.122524	MAJLIS PERBANDARAN TELUK INTAN
84	T084	37	4.066951	101.122360	MAJLIS PERBANDARAN TELUK INTAN
85	T085	38	4.066647	101.122236	MAJLIS PERBANDARAN TELUK INTAN
86	T086 (FDP 13)	1688	4.066331	101.122119	MAJLIS PERBANDARAN TELUK INTAN
87	T087	23	4.074281	101.123494	MAJLIS PERBANDARAN TELUK INTAN
88	T088 (FDP 04)	38	4.074457	101.123600	MAJLIS PERBANDARAN TELUK INTAN
89	T089	27	4.074779	101.123749	MAJLIS PERBANDARAN TELUK INTAN
90	T090	29	4.075007	101.123783	MAJLIS PERBANDARAN TELUK INTAN
91	T091	29	4.075267	101.123854	JKR TELUK INTAN
92	T092	22	4.075483	101.124015	JKR TELUK INTAN
93	T093	24	4.075411	101.124206	JKR TELUK INTAN
94	T094	29	4.075401	101.124415	MAJLIS PERBANDARAN TELUK INTAN
94	T095	34	4.075601	101.124589	MAJLIS PERBANDARAN TELUK INTAN
96	T096	41	4.075833	101.124787	MAJLIS PERBANDARAN TELUK INTAN
97	T097 (FDP 05)	37	4.076181	101.124935	MAJLIS PERBANDARAN TELUK INTAN
98	T098	35	4.076488	101.125082	MAJLIS PERBANDARAN TELUK INTAN
99	T099	40	4.076793	101.125167	MAJLIS PERBANDARAN TELUK INTAN
100	T0100	36	4.077170	101.125151	MAJLIS PERBANDARAN TELUK INTAN
101	T0101	42	4.077507	101.125155	MAJLIS PERBANDARAN TELUK INTAN
102	T0102	40	4.077916	101.125085	MAJLIS PERBANDARAN TELUK INTAN
103	T0103	41	4.078280	101.125047	MAJLIS PERBANDARAN TELUK INTAN
104	T0104	38	4.078647	101.125036	MAJLIS PERBANDARAN TELUK INTAN
105	T0105	33	4.078984	101.124927	MAJLIS PERBANDARAN TELUK INTAN
106	T0106	40	4.079261	101.124771	MAJLIS PERBANDARAN TELUK INTAN
107	T0107	42	4.079601	101.124575	MAJLIS PERBANDARAN TELUK INTAN
108	T0108	38	4.079844	101.124261	MAJLIS PERBANDARAN TELUK INTAN
109	T0109	37	4.079835	101.123908	MAJLIS PERBANDARAN TELUK INTAN

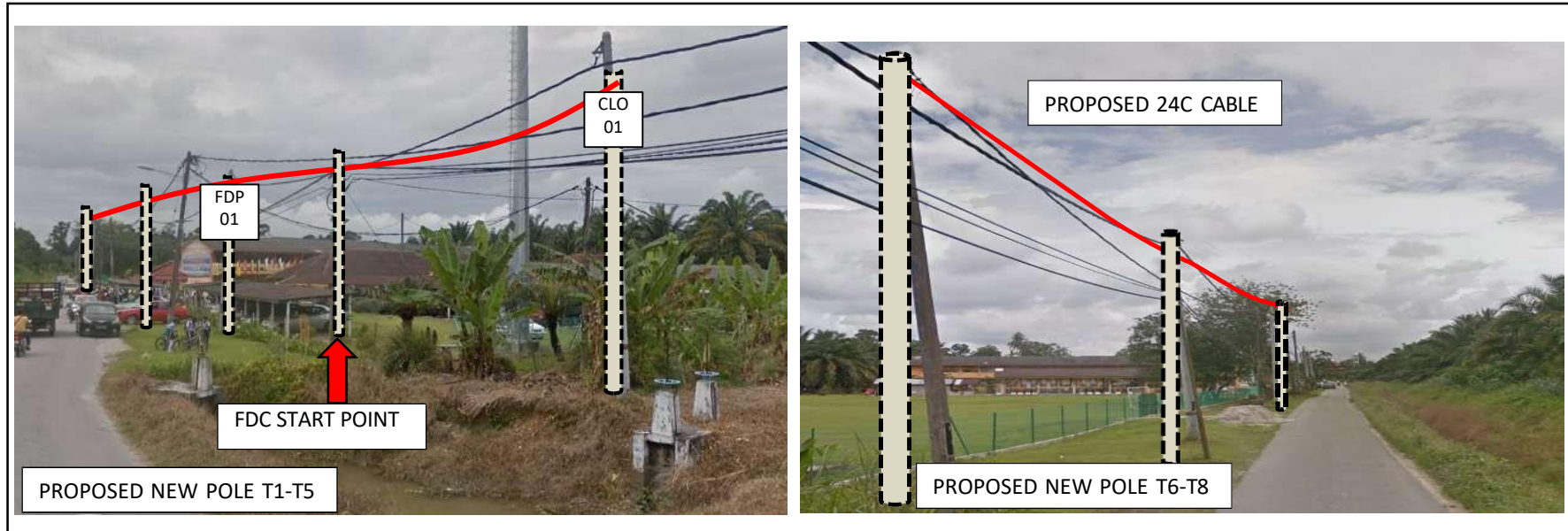


PROJEK PENYEDIAAN DAN PENYELENGGARAAN POINT OF PRESENT (POP) FASA 2: HAB INFRASTUKTUR GENTIAN OPTIK BERHAMPIRAN DENGAN SEKOLAH, KAWASAN PERINDUSTRIAN, PREMIS KERAJAAN DAN KOMUNITI SEKITARNYA OLEH KEMENTERIAN KOMUNIKASI MALAYSIA - ZON UTARA (KKMM.400-11/17/132(1))



Proposed New Pole Coordinate					
No.	Pole Number	Distance (m)	Latitude	Longitude	Local Authority
110	T0110	19	4.079883	101.123574	MAJLIS PERBANDARAN TELUK INTAN
111	T0111	18	4.079856	101.123427	MAJLIS PERBANDARAN TELUK INTAN
112	T0112	24	4.079964	101.123354	MAJLIS PERBANDARAN TELUK INTAN
113	T0113	35	4.080182	101.123338	MAJLIS PERBANDARAN TELUK INTAN
114	T0114	31	4.080515	101.123264	MAJLIS PERBANDARAN TELUK INTAN
115	T0115	40	4.080801	101.123234	MAJLIS PERBANDARAN TELUK INTAN
116	T0116	31	4.081161	101.123243	MAJLIS PERBANDARAN TELUK INTAN
117	T0117	43	4.081537	101.123353	MAJLIS PERBANDARAN TELUK INTAN
118	T0118	41	4.081927	101.123459	MAJLIS PERBANDARAN TELUK INTAN
119	T0119 (FDP 06)	41	4.082296	101.123560	MAJLIS PERBANDARAN TELUK INTAN

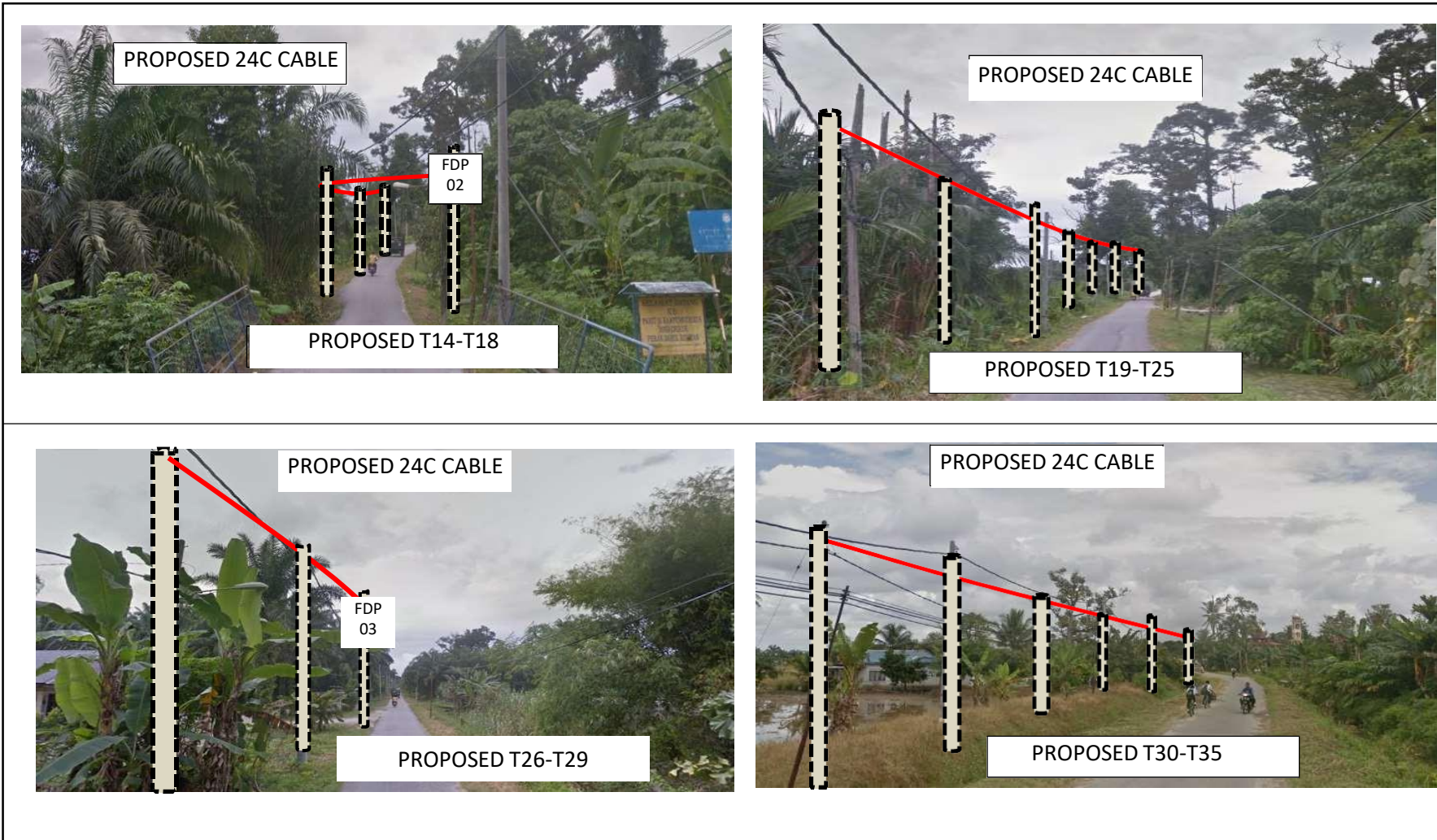
Site photos – Proposed to install pole



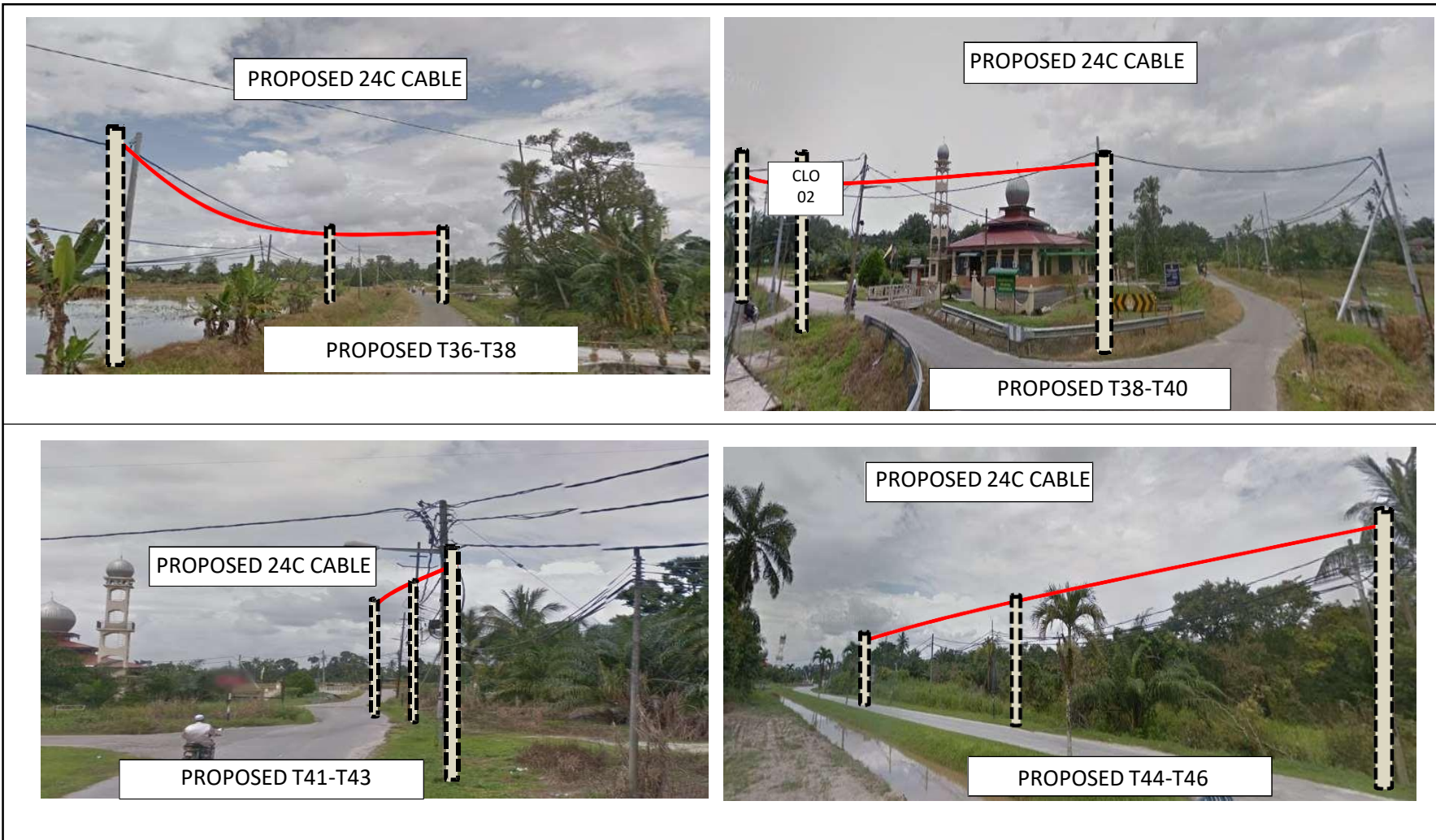
Site photos – Proposed to install pole



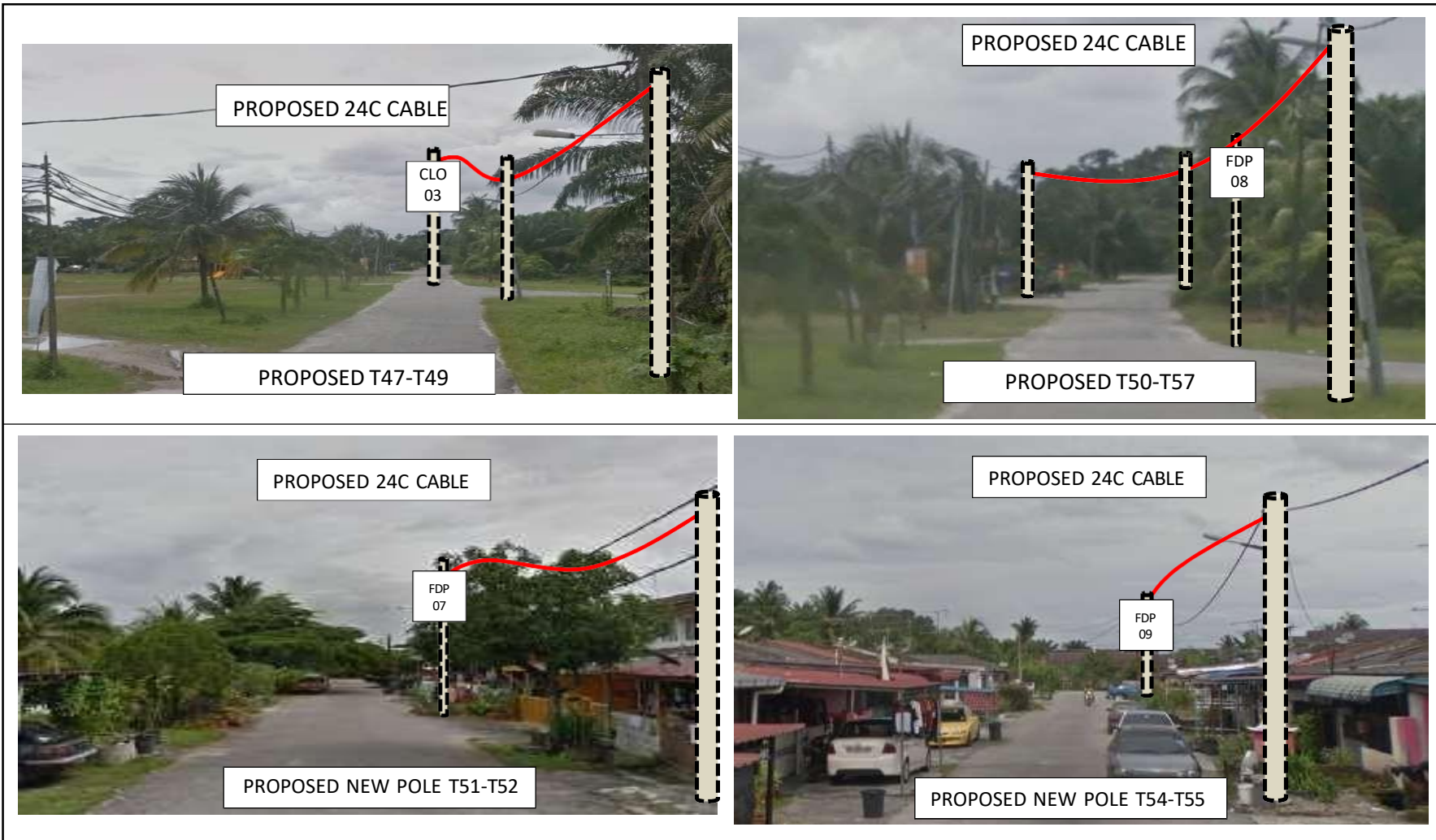
Site photos – Proposed to install pole



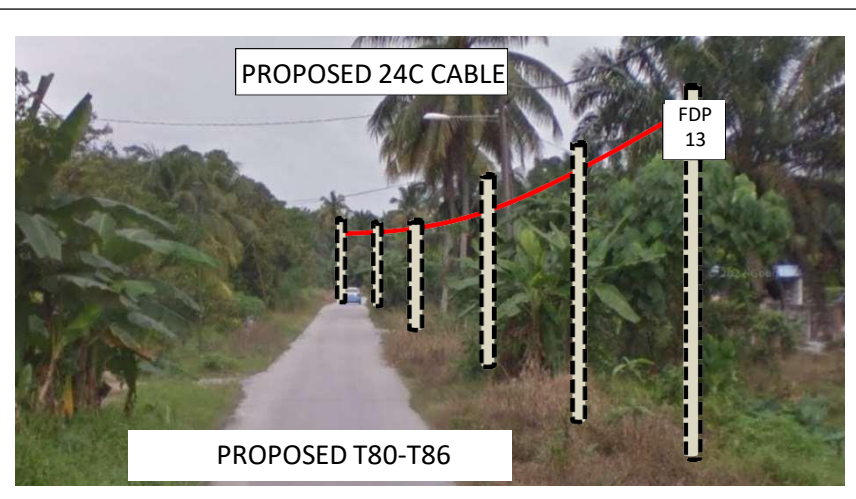
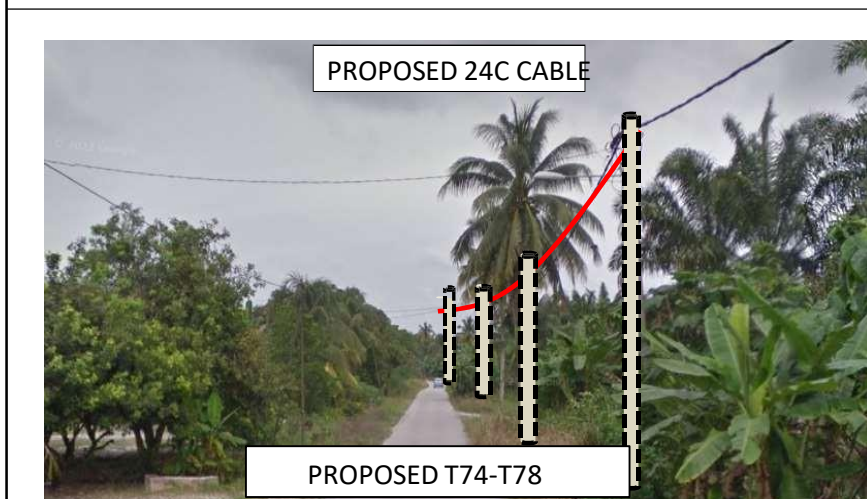
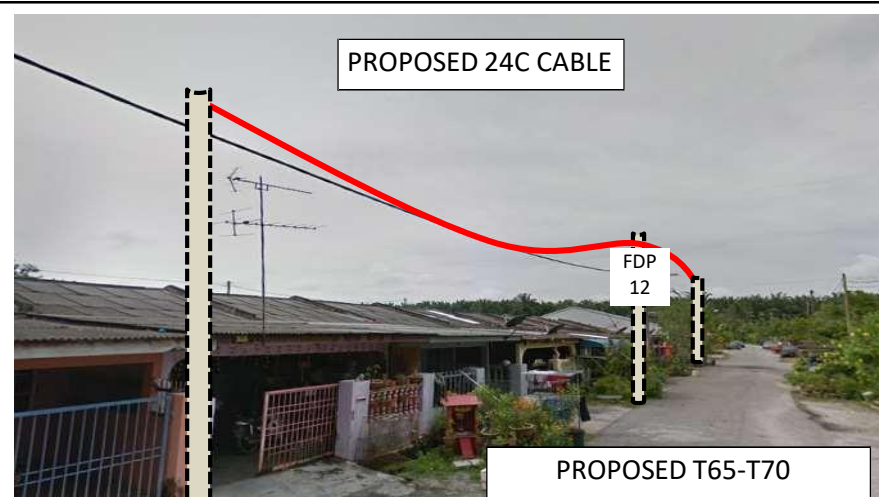
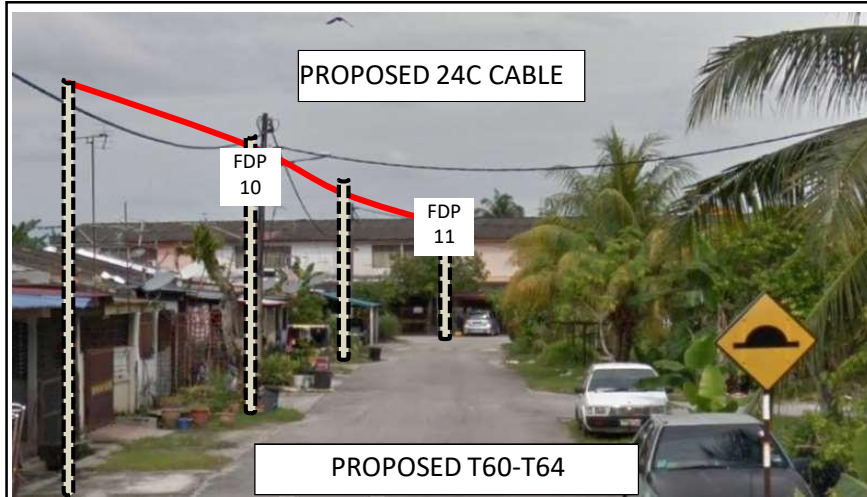
Site photos – Proposed to install pole



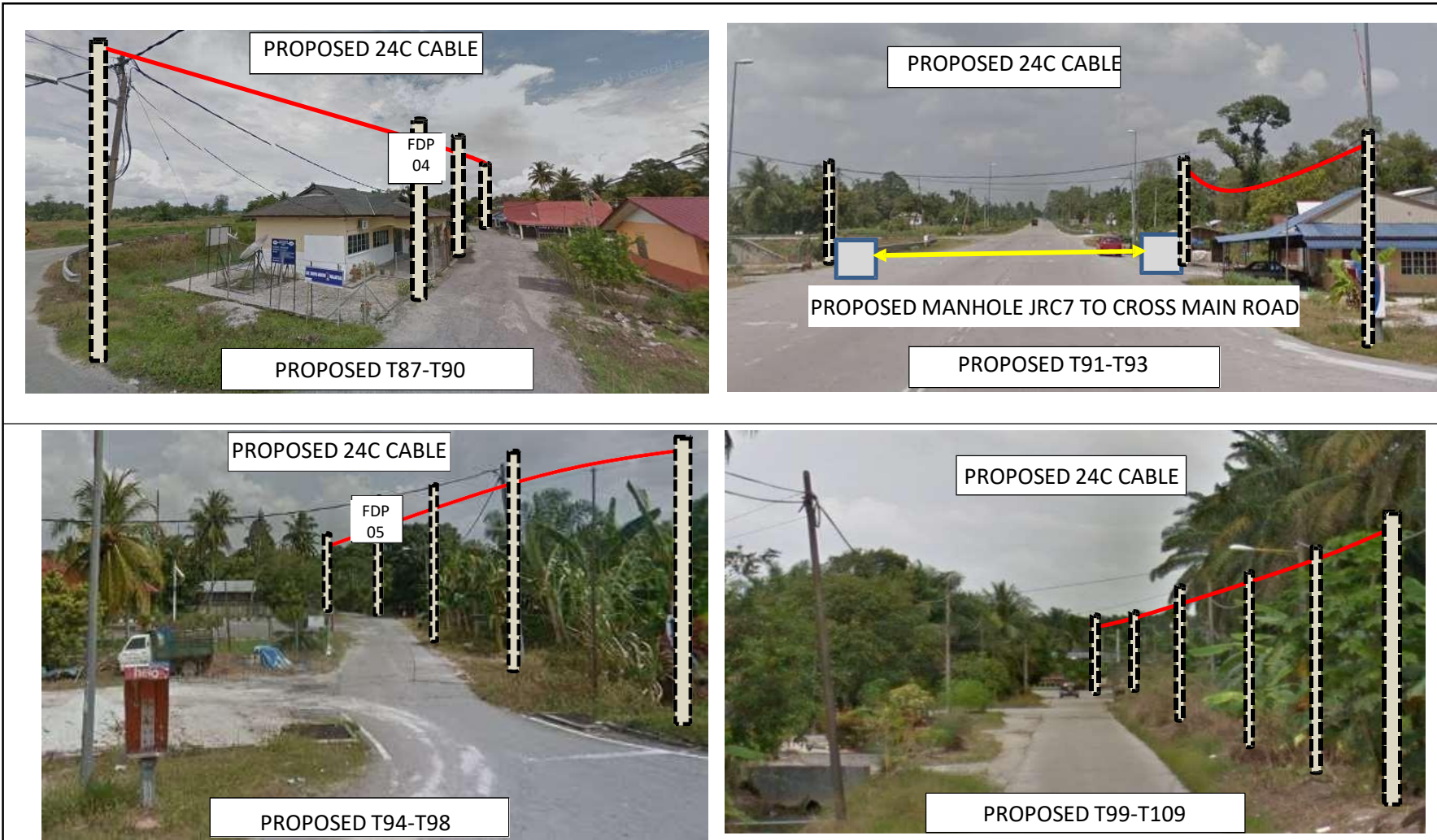
Site photos – Proposed to install pole



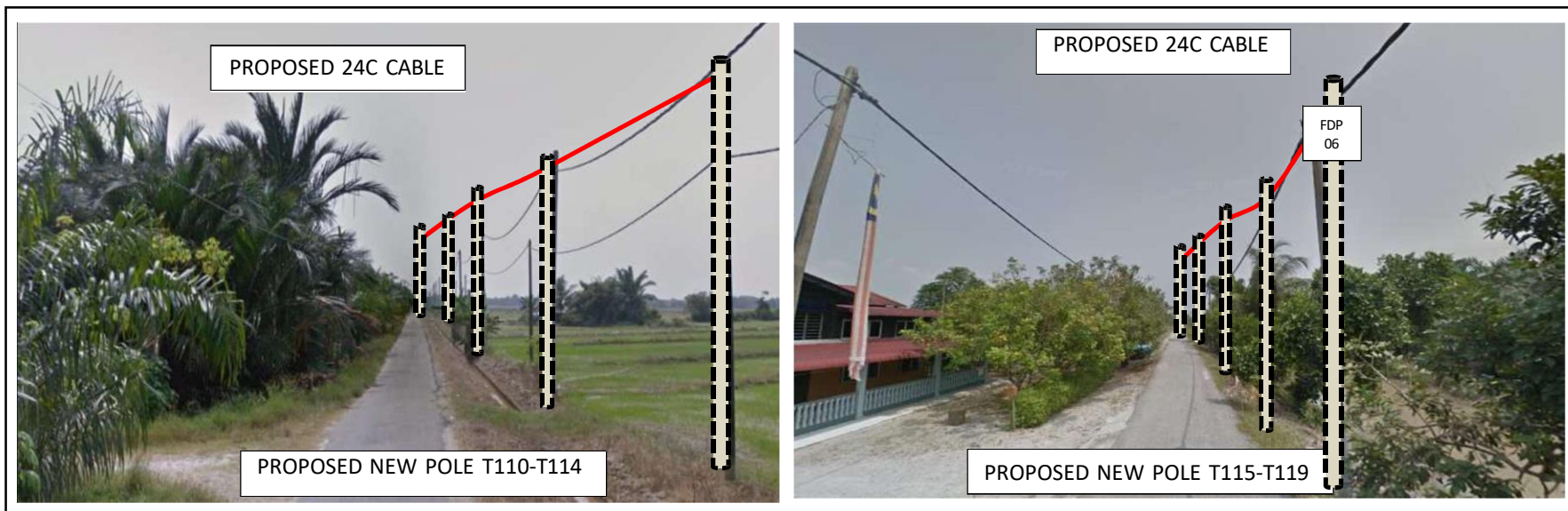
Site photos – Proposed to install pole



Site photos – Proposed to install pole



Site photos – Proposed to install pole



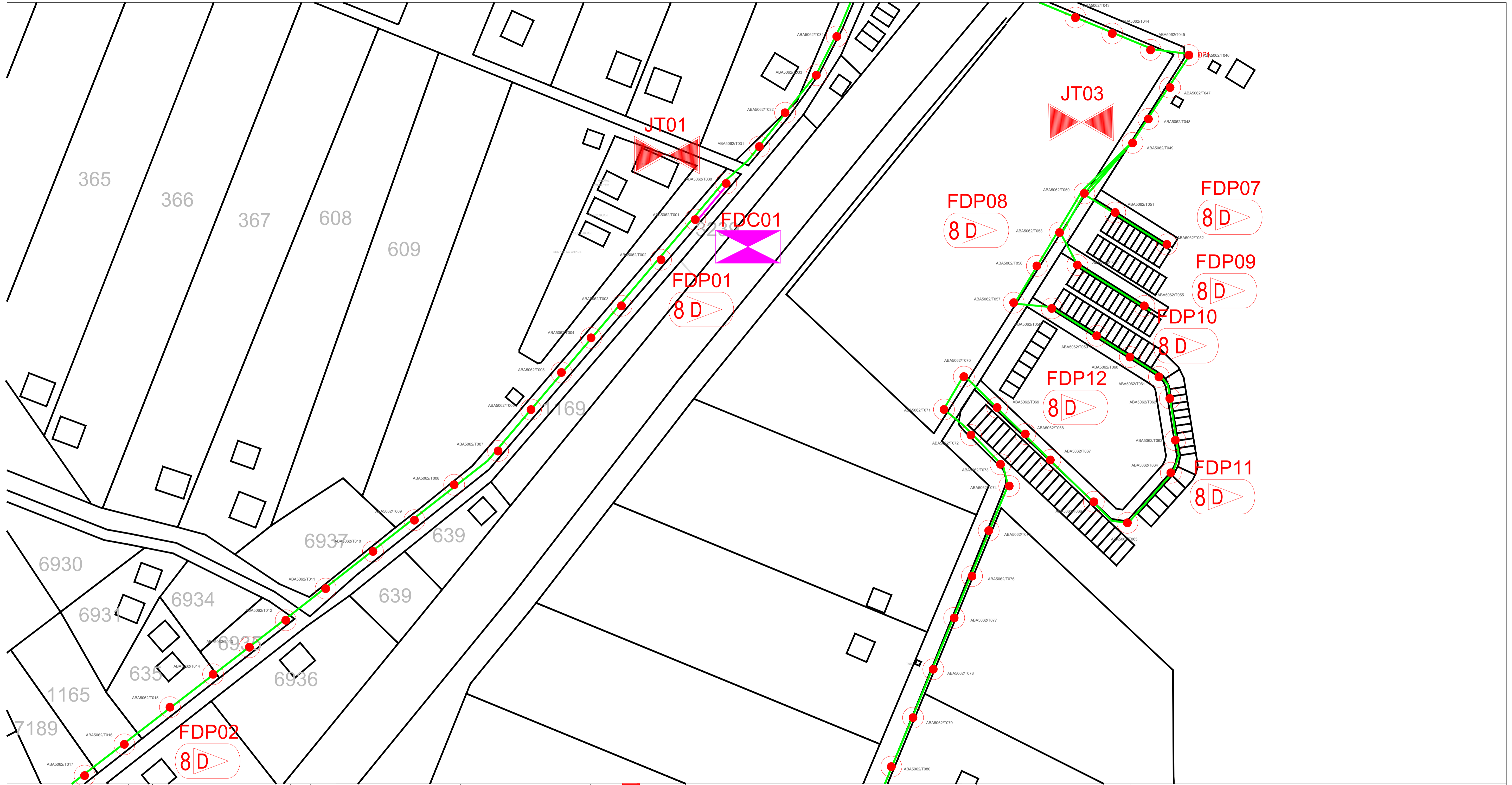


PROJEK PENYEDIAAN DAN PENYELENGGARAAN POINT OF PRESENT (POP) FASA 2: HAB INFRASTUKTUR GENTIAN OPTIK BERHAMPIRAN DENGAN SEKOLAH, KAWASAN PERINDUSTRIAN, PREMIS KERAJAAN DAN KOMUNITI SEKITARNYA OLEH KEMENTERIAN KOMUNIKASI MALAYSIA - ZON UTARA (KKMM.400-11/17/132(1))



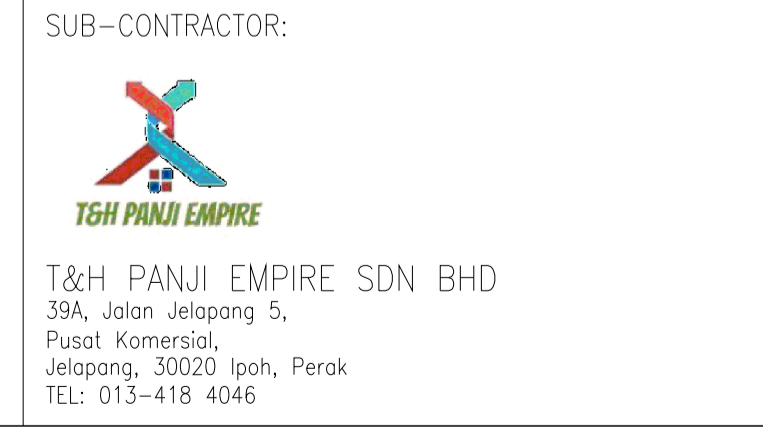
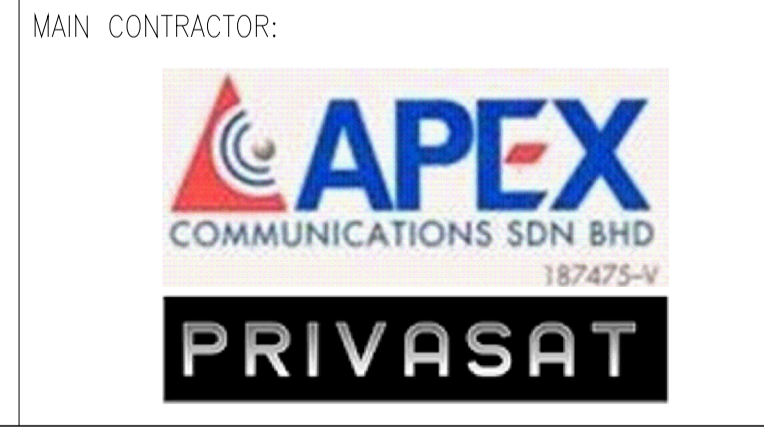
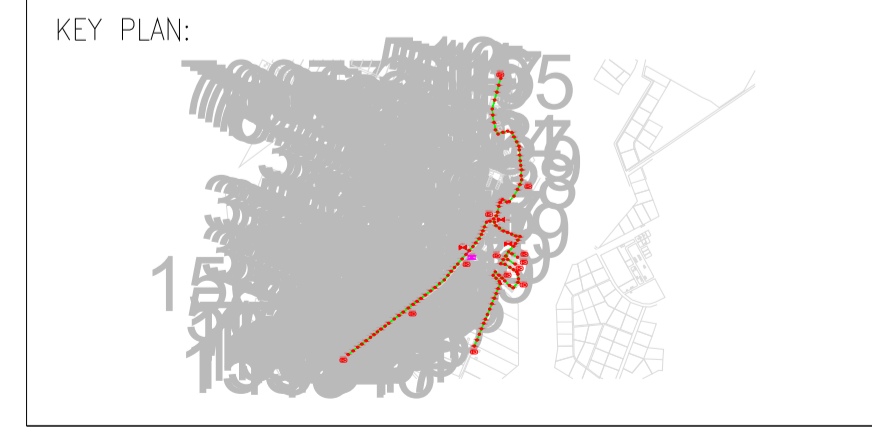
7.0 3rd PARTIES DEPENDENCIES

NO	LOCAL COUNCIL / AUTHORITY	REMARK
1	Majlis Perbandaran Teluk Intan	4100m
2	Jabatan Kerja Raya Teluk Intan	100m



	12C FOC	Installed 1:4 / 1:8 / 1:32 splitter		Installed Pole (9m)		Suspension		New Manhole (PIT)		Micro-Trenching (Meter)		MH NO.
	24C FOC	Installed Patch Cord		Installed Pole (7.5M)		Tension		New Manhole(JRC7)		Temporary Infra (Meter)		Existing TNB Pole NO.
	48C FOC	FDC		Installed Pole (6.7M)		Pole Ring		FDP Boundary		Loop / Coil (Meter)		New Pole NO.
	96C FOC	Closure		Existing TNB Pole		FDP with (1:8) splitter		HDD (Meter)		Active Outdoor Cabinet		Closure NO.
	144C FOC	Existing Closure		Installed Riser		FDP with (1:8) splitter		Open Cut (Meter)		C01		FDP NO.
				Existing Manhole		FDP with (1:8) splitter						

ACTUAL HOMEPASS : 104



SUPPLY, INSTALLATION AND COMMISSIONING OF FTTX NETWORK INFRASTRUCTURE FOR ALLO TECHNOLOGY SDN BHD POP 2 PROJECT (D-SIDE) - PMU TINT FOR ABA5062 SEKOLAH

DRAWING TITLE:
LAYOUT PLAN - SK CHIKUS

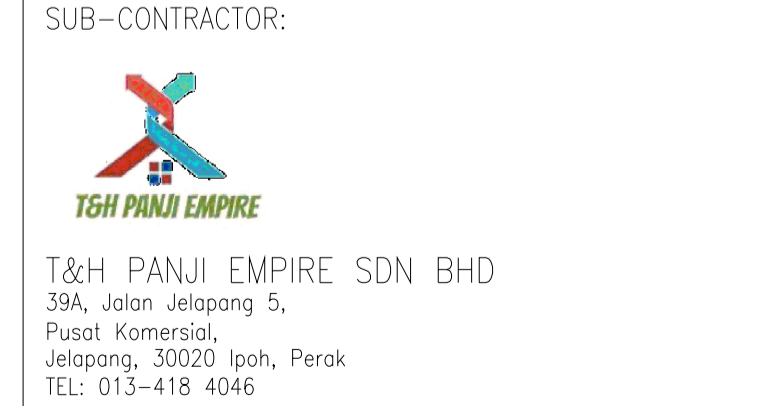
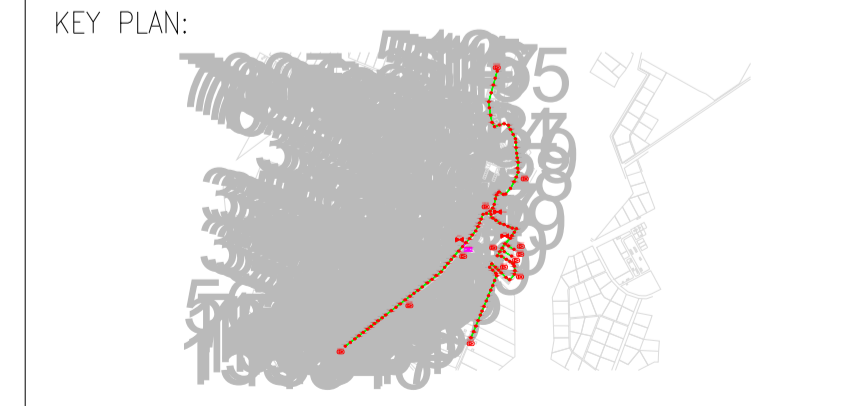
PROJECT PHASE:

Design By : T&H PANJI EMPIRE	Date : 9/12/2024
Drawn By : FAKHRUL	Scale : 1 : 5
Checked By :	Job Number : 59
DRAWING NUMBER :	Sheet : 3/4
THIS PRINT AND ITS COPYRIGHT ARE THE PROPERTY OF T&H PANJI EMPIRE SDN BHD	
Size : A1	



12C FOC	Installed 1:4 / 1:8 / 1:32 splitter	○	Installed Pole (9m)	s	Suspension	UB30	New Manhole (PIT)	—	Micro-Trenching (Meter)	MH1	MH NO.
24C FOC	Installed Patch Cord	○	Installed Pole (7.5M)	119	Tension	C7	New Manhole(JRC7)	—	Temporary Infra (Meter)	TKS-1	Existing TNB Pole NO.
48C FOC	FDC	1	Installed Pole (6.7M)	○	Pole Ring	—	FDP Boundary	—	Loop / Coil (Meter)	P001	New Pole NO.
96C FOC	Closure	3	Existing TNB Pole	8D>	FDP with (1:8) splitter	13	HDD (Meter)	#	Active Outdoor Cabinet	CL01	Closure NO.
144C FOC	Existing Closure	□	Installed Riser	○	Existing Manhole	—	Open Cut (Meter)	C01	FDC NO.	DP1	FDP NO.

ACTUAL HOMEPASS : 104

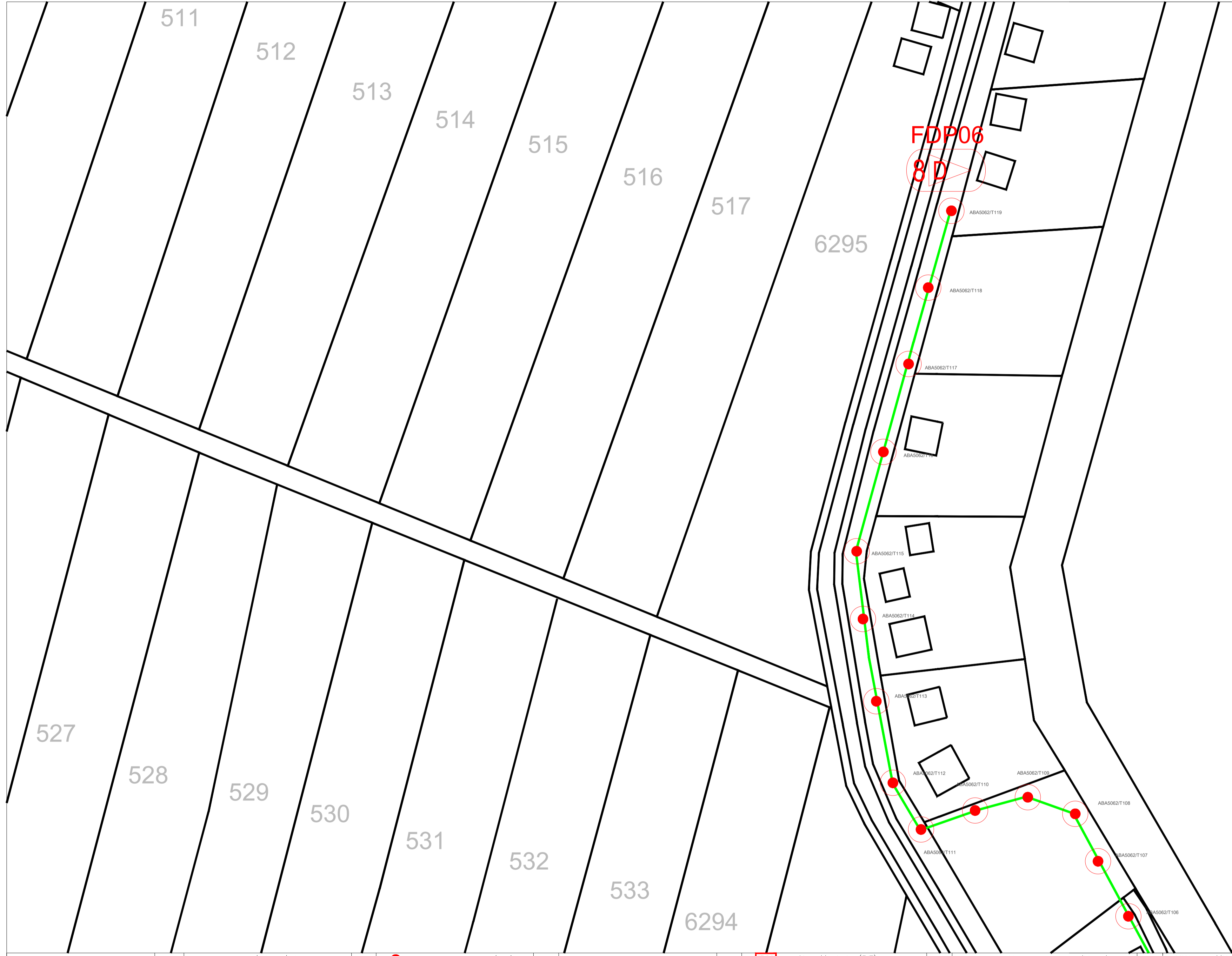


PROJECT TITLE:
SUPPLY, INSTALLATION AND COMMISSIONING OF FTTX NETWORK INFRASTRUCTURE FOR ALLO TECHNOLOGY SDN BHD POP 2 PROJECT (D-SIDE) - PMU TINT FOR ABA5062 SEKOLAH

DRAWING TITLE:
LAYOUT PLAM - SK CHIKUS

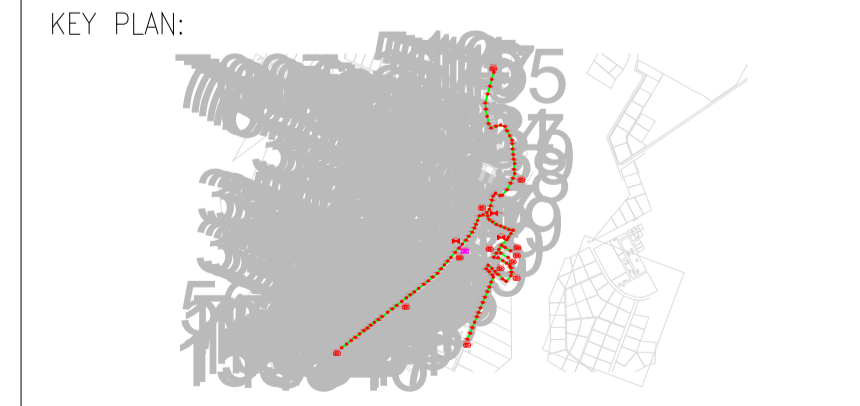
PROJECT PHASE:

Design By : T&H PANJI EMPIRE	Date : 9/12/2024
Drawn By : FAKHRUL	Scale : 1 : 5
Checked By :	Job Number : 59
DRAWING NUMBER :	Sheet : 2/4
THIS PRINT AND ITS COPYRIGHT ARE THE PROPERTY OF T&H PANJI EMPIRE SDN BHD	
	Size : A1



12C FOC	Installed 1:4 / 1:8 / 1:32 splitter	Installed Pole (9m)	Suspension	UB30	New Manhole (PIT)	Micro-Trenching (Meter)	MH1	MH NO.
24C FOC	Installed Patch Cord	Installed Pole (7.5M)	Tension	C7	New Manhole(JRC7)	Temporary Infra (Meter)	TKS-1	Existing TNB Pole NO.
48C FOC	FDC	Installed Pole (6.7M)	Pole Ring		FDP Boundary	Loop / Coil (Meter)	P001	New Pole NO.
96C FOC	Closure	Existing TNB Pole	FDP with (1:8) splitter	13	HDD (Meter)	Active Outdoor Cabinet	CL01	Closure NO.
144C FOC	Existing Closure	Installed Riser	Existing Manhole		Open Cut (Meter)	C01	DP1	FDP NO.

ACTUAL HOMEPASS : 104

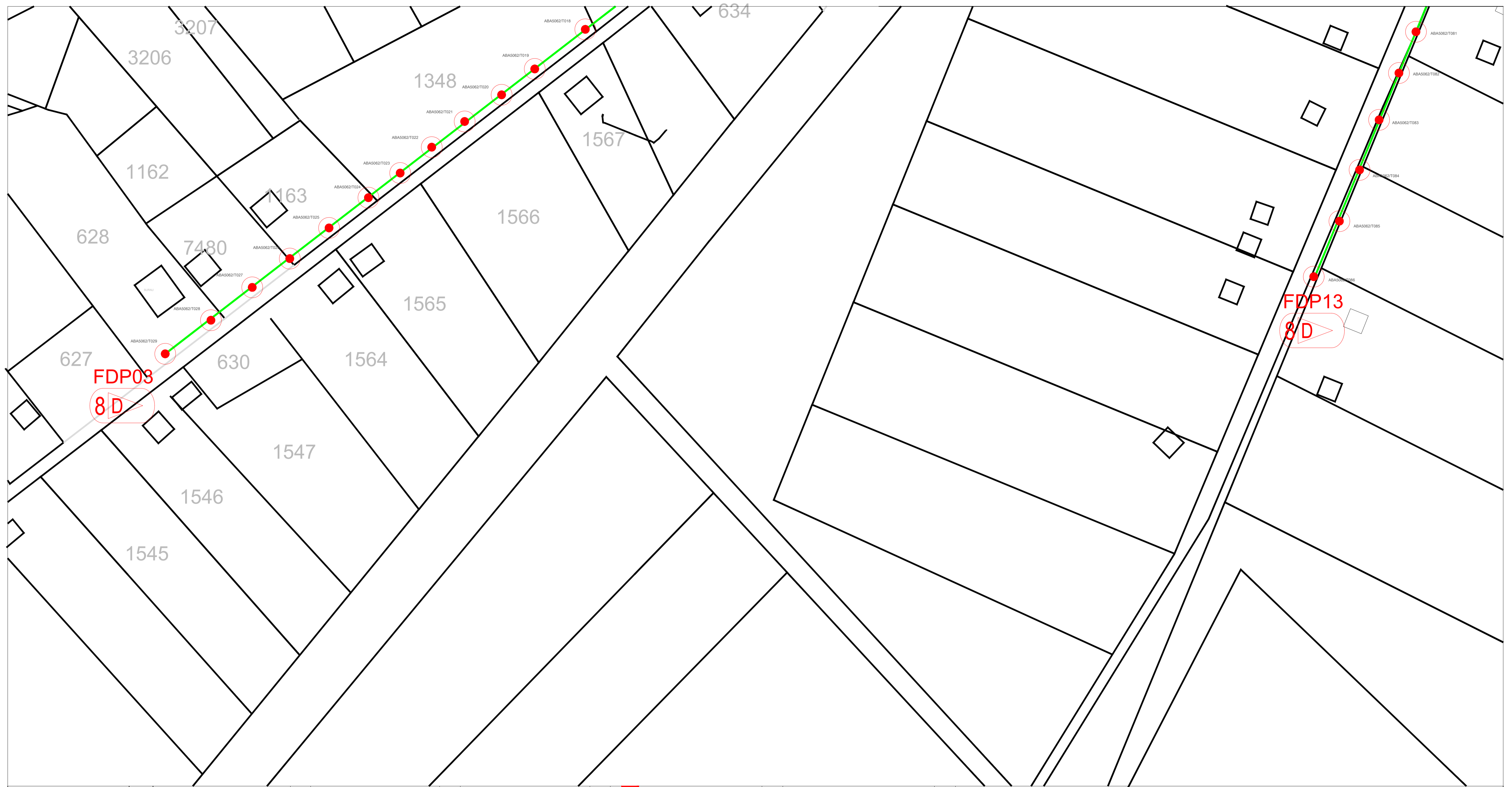


PROJECT TITLE:
SUPPLY, INSTALLATION AND COMMISSIONING OF FTTX NETWORK INFRASTRUCTURE FOR ALLO TECHNOLOGY SDN BHD POP 2 PROJECT (D-SIDE) - PMU TINT FOR ABA5062 SEKOLAH KEBANGSAAN CHIKUS

DRAWING TITLE:
LAYOUT PLAM - SK CHIKUS

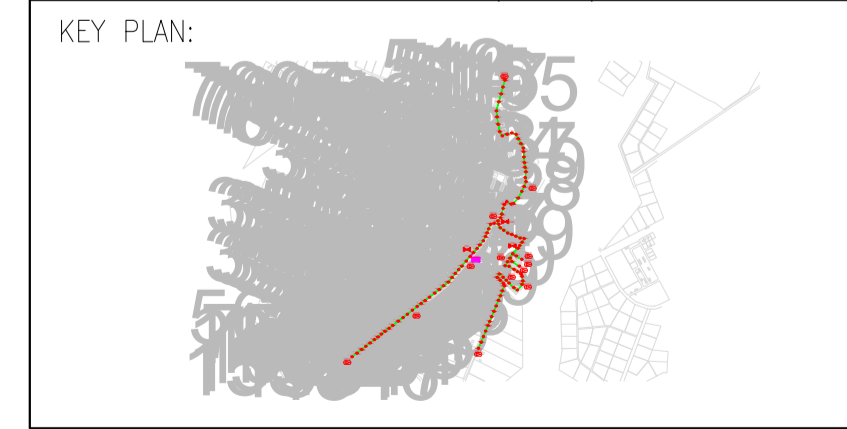
PROJECT PHASE:

Design By : T&H PANJI EMPIRE	Date : 9/12/2024
Drawn By : FAKHRUL	Scale : 1 : 5
Checked By :	Job Number : 59
DRAWING NUMBER :	Sheet : 1/4
THIS PRINT AND ITS COPYRIGHT ARE THE PROPERTY OF T&H PANJI EMPIRE SDN BHD	
	Size : A1



12C FOC	Installed 1:4 / 1:8 / 1:32 splitter	Installed Pole (9m)	s	Suspension	UB30	New Manhole (PIT)	Micro-Trenching (Meter)	MH1	MH NO.
24C FOC	Installed Patch Cord	Installed Pole (7.5M)	119	Tension	C7	New Manhole(JRC7)	Temporary Infra (Meter)	TKS-1	Existing TNB Pole NO.
48C FOC	FDC	Installed Pole (6.7M)	1	Pole Ring		FDP Boundary	Loop / Coil (Meter)	P001	New Pole NO.
96C FOC	Closure	Existing TNB Pole	3	FDP with (1:8) splitter	13	HDD (Meter)	#	CL01	Closure NO.
144C FOC	Existing Closure	Installed Riser		Existing Manhole		Open Cut (Meter)	C01	DP1	FDP NO.

ACTUAL HOMEPASS : 104



PROJECT OWNER:

KEMENTERIAN KOMUNIKASI DAN DIGITAL

MAIN CONTRACTOR:

APEX COMMUNICATIONS SDN BHD
187475-V
PRIVASAT

SUB-CONTRACTOR:

T&H PANJI EMPIRE SDN BHD
39A, Jalan Jelapang 5,
Pusat Komersial,
Jelapang, 30020 Ipoh, Perak
TEL: 013-418 4046

PROJECT TITLE:

SUPPLY, INSTALLATION AND COMMISSIONING OF FTTX NETWORK INFRASTRUCTURE FOR ALLO TECHNOLOGY SDN BHD POP 2 PROJECT (D-SIDE) - PMU TINT FOR ABA5062 SEKOLAH KEBANGSAAN CHIKUS

DRAWING TITLE:

LAYOUT PLAM - SK CHIKUS

PROJECT PHASE:

Design By : T&H PANJI EMPIRE	Date : 9/12/2024
Drawn By : FAKHRUL	Scale : 1 : 5
Checked By :	Job Number : 59
DRAWING NUMBER :	Sheet : 4/4
THIS PRINT AND ITS COPYRIGHT ARE THE PROPERTY OF T&H PANJI EMPIRE SDN BHD	
Size : A1	