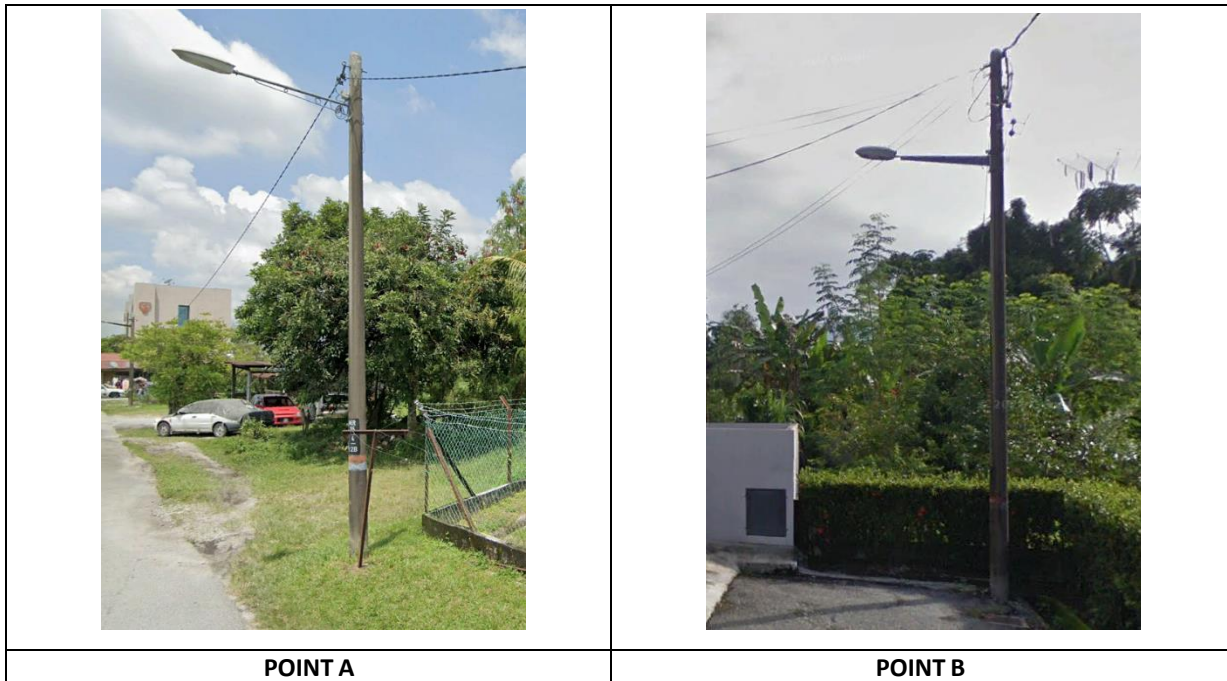


TECHNICAL PROPOSAL

POP2 D/SIDE ABB0047 SEKOLAH KEBANGSAAN SERI BIDOR

Company Name	: MONOSA GREEN SDN BHD
Company Address	: NO. 3, JALAN INR 2, TAMAN INDUSTRI NAUTICAL, 48000 RAWANG, SELANGOR
Prepared By	: SITI ZULAIKHA BINTI RUSLAN
Date	: 05/08/24



Starting Point

Site / Boundary Name	: Sekolah Kebangsaan Seri Bidor
Address	: Jalan Persatuan
District	: Bidor
Postcode	: 35500
State	: Perak
GPS Coordinate	: 4.113927N, 101.2861E
LRD	: A

End Point

Site / Boundary Name	: No 10,
Address	: Jalan Persatuan
District	: Bidor
Postcode	: 35500
State	: Perak
GPS Coordinate	: 4.110988N, 101.292E
LRD	: B

1.0 Work Summary

No	Proposed Distance and Method	Unit	Qty
1	Horizontal Directional Drilling (HDD)	m	0
2	Carriage Way Open trench (CW)	m	0
3	Grass Verge Open Trenching (GV)	m	0
4	Micro trenching (MT)	m	0
	Total		0

	Other Information	Unit	Qty
1	Installation of Fiber Optic Cables	m	2610
2	Install New Pole	ea	87
3	Install New JRC7 Manhole	ea	0
4	Install GI Riser 100mm	ea	0
5	Install Fiber Distribution Point and Closure (Splicing, Termination and Testing)	ea	14
6	Estimated Time Required for Completion	days	21

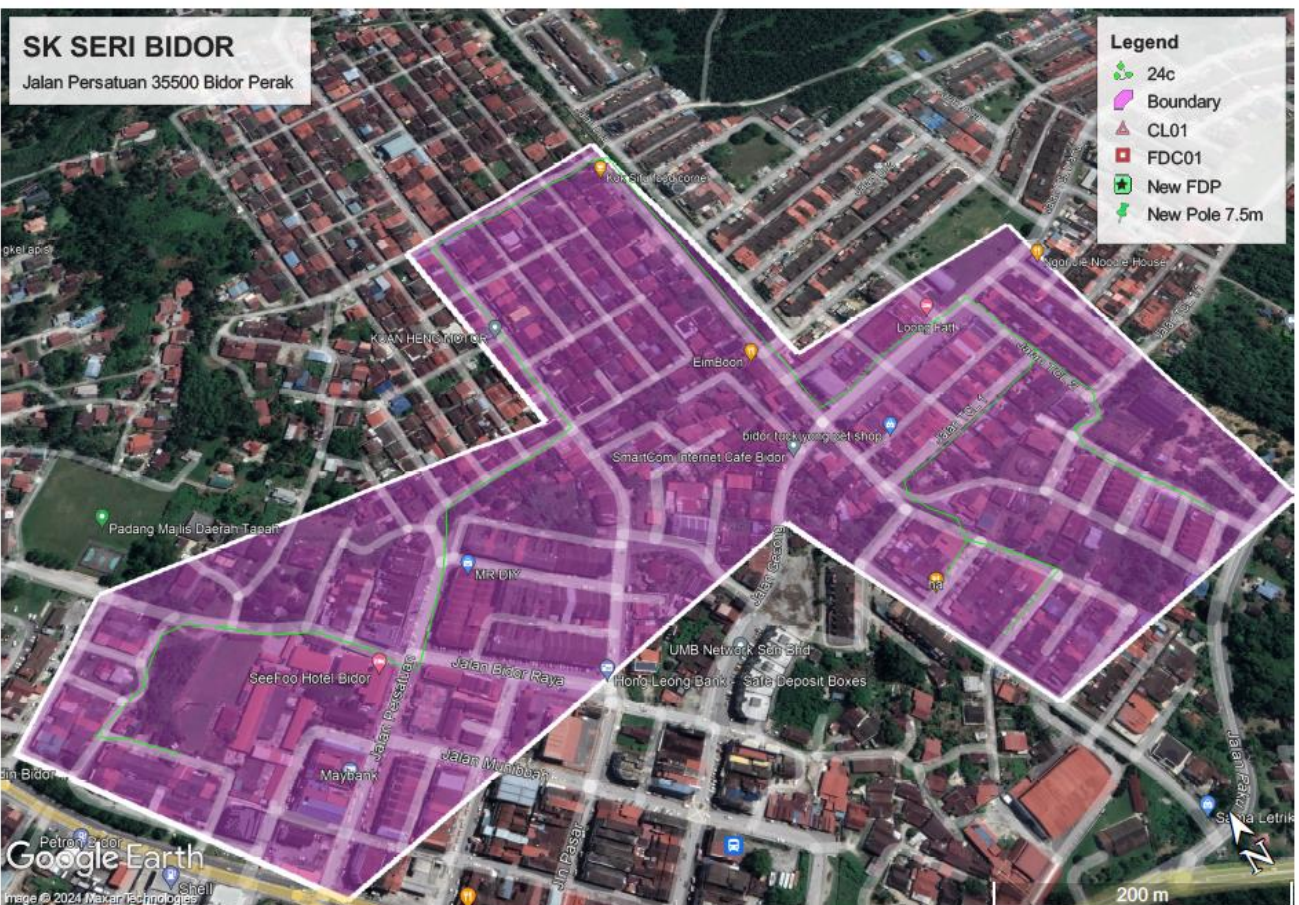
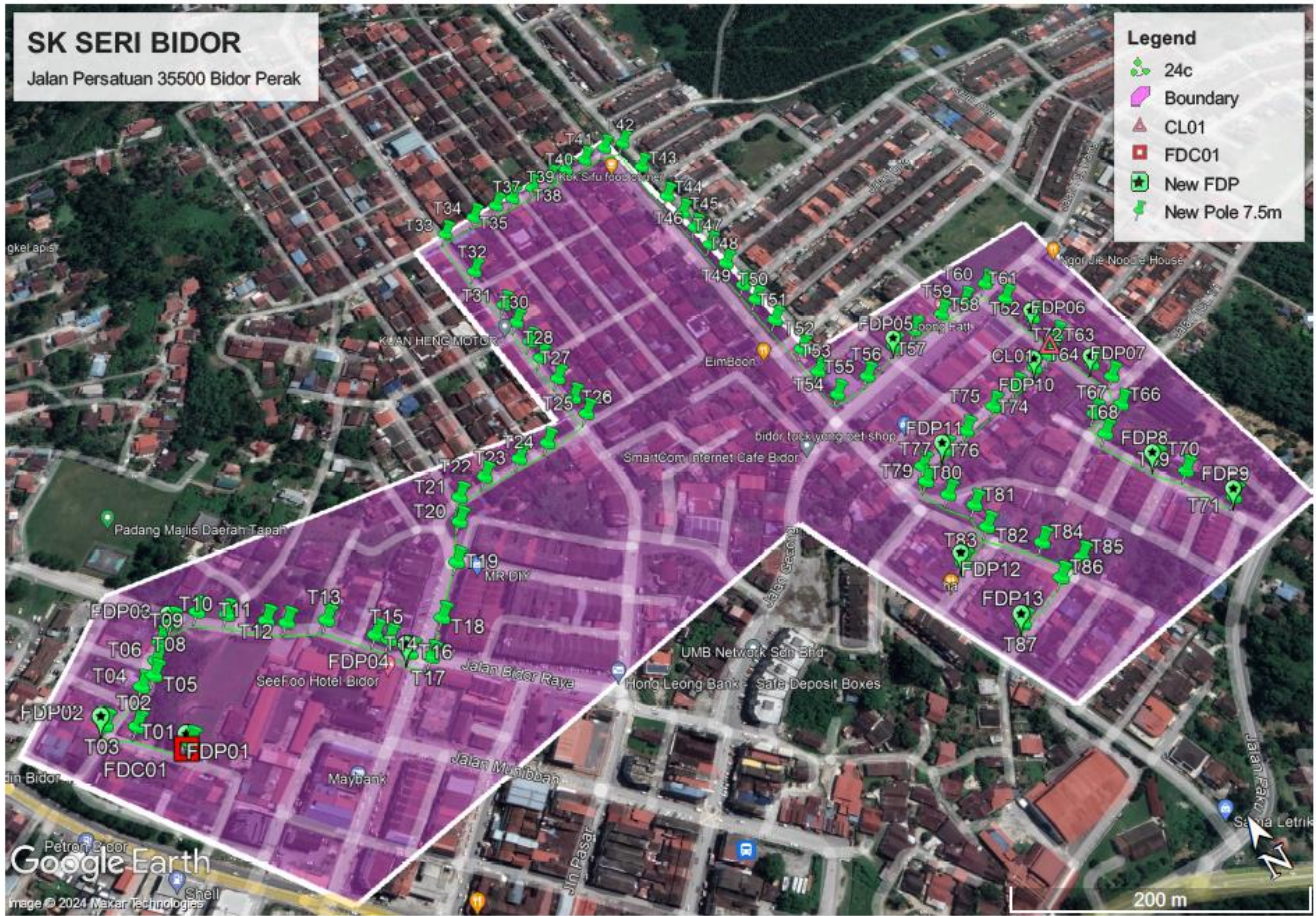
2.0 Local Authority Summary

1. Daerah Bidor, Perak

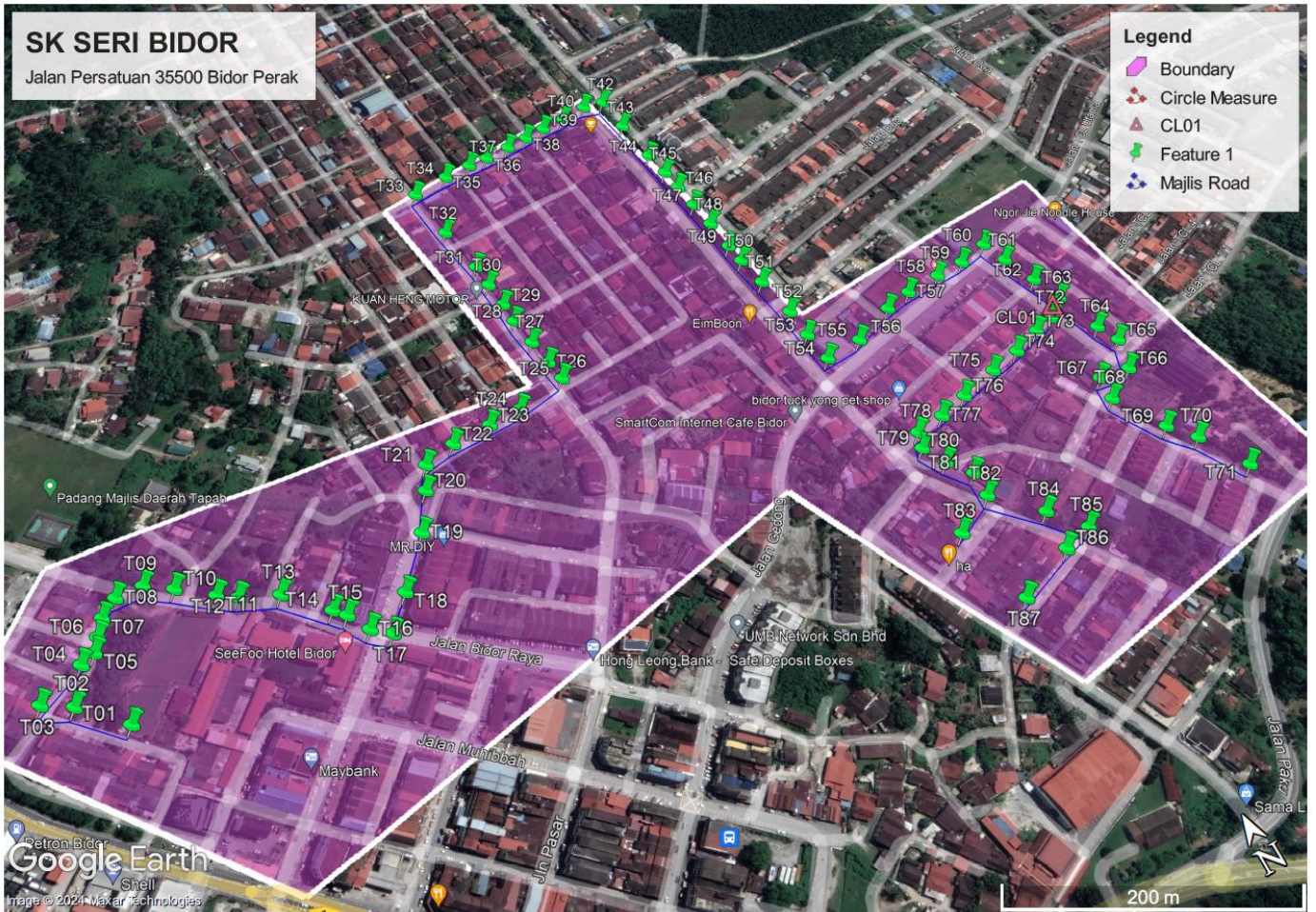
Bil	Items	Owner	Quantity	Distance
1	HDD	JKR	-	-
		Majlis	-	-
		Estate / Private Land	-	-
2	New Pole	JKR	-	-
		Majlis	87pcs	2,610m
		Estate / Private Land	-	-
3	Existing TNB Pole	JKR	-	-
		Majlis	-	-
		Estate / Private Land	-	-
Total				2,610m

3.0 Site Plan – KMZ

3.1 Overview site area



3.2 Site Plan - KMZ Routing (All Local Authority)



— Majlis Road

4.0 Proposed New FDP Lat and Long Table

PROPOSED NEW FDP COORDINATE			
POLE NUMBER	FDP NUMBER	LATITUDE	LONGITUDE
T01	FDP01	4.113926	101.2861
T03	FDP02	4.113929	101.2861
T08	FDP03	4.114315	101.2857
T16	FDP04	4.114756	101.2863
T56	FDP05	4.113772	101.2876
T62	FDP06	4.114085	101.2917
T64	FDP07	4.113753	101.2927
T69	FDP08	4.112359	101.2927
T71	FDP09	4.111857	101.293
T73	FDP010	4.113402	101.2925
T77	FDP011	4.113176	101.2915
T83	FDP012	4.112431	101.2911
T87	FDP013	4.111871	101.2912

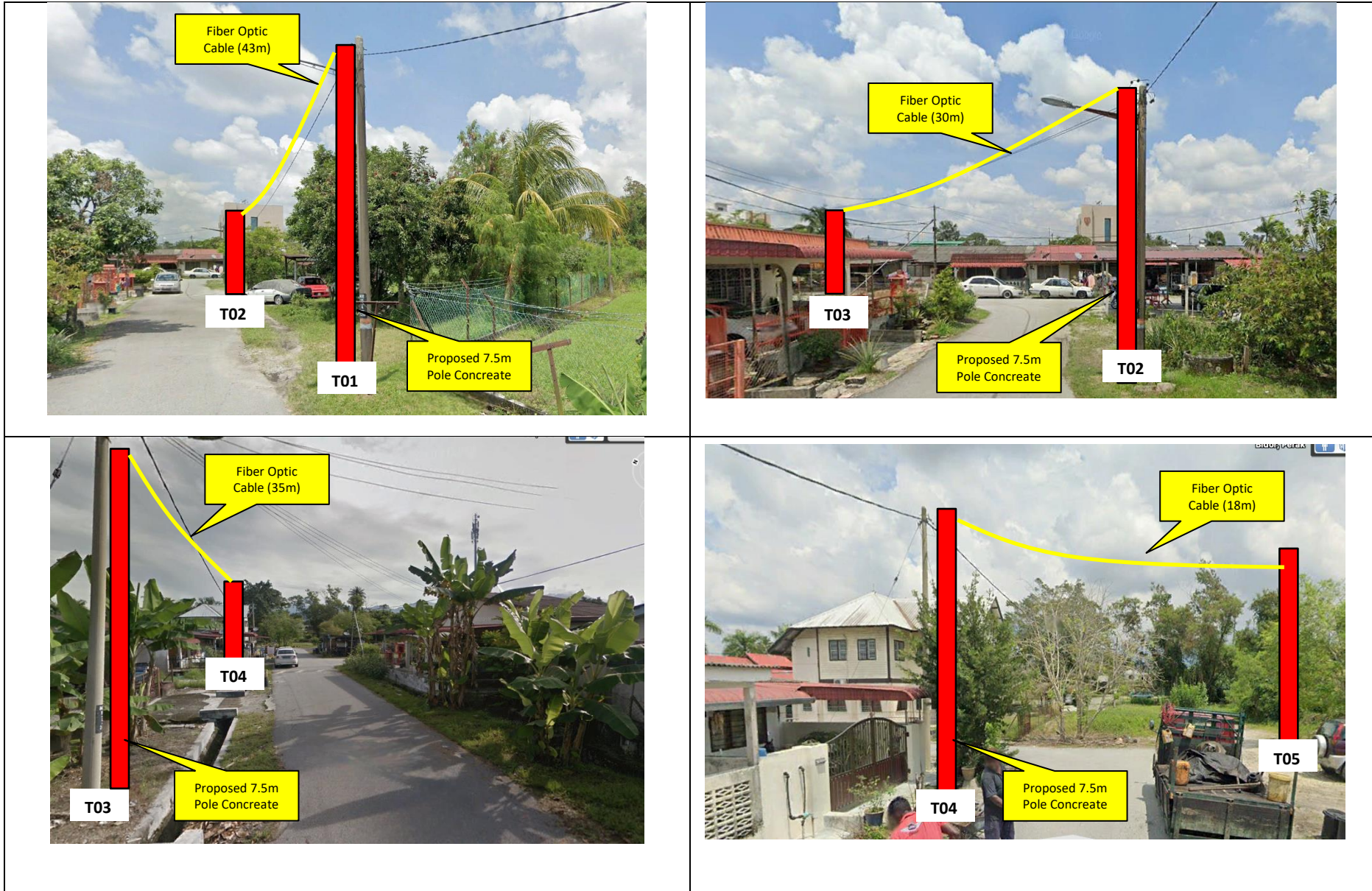
5.0 Proposed New Pole Lat & Long Table

POLE NUMBER	LATITUDE	LONGITUDE	LOCAL AUTHORITIES
T001	4.113927	101.2861	Majlis Daerah
T002	4.114201	101.2859	
T003	4.114315	101.2857	
T004	4.114443	101.286	
T005	4.114473	101.2861	
T006	4.114563	101.2861	
T007	4.114669	101.2862	
T008	4.114755	101.2863	
T009	4.114755	101.2865	
T010	4.114635	101.2867	
T011	4.114464	101.2869	
T012	4.114377	101.287	
T013	4.114256	101.2872	
T014	4.113996	101.2875	
T015	4.113924	101.2875	
T016	4.113775	101.2876	
T017	4.113677	101.2877	
T018	4.113888	101.2879	
T019	4.1142	101.2882	
T020	4.114462	101.2883	
T021	4.114628	101.2884	
T022	4.11468	101.2886	
T023	4.114686	101.2889	
T024	4.114698	101.2891	
T025	4.114771	101.2895	
T026	4.114936	101.2895	
T027	4.11514	101.2894	
T028	4.115364	101.2894	
T029	4.115529	101.2894	
T030	4.115737	101.2894	
T031	4.115926	101.2894	
T032	4.116317	101.2894	
T033	4.116762	101.2893	
T034	4.116794	101.2896	
T035	4.11681	101.2898	
T036	4.116815	101.2899	
T037	4.116829	101.2901	
T038	4.11684	101.2903	
T039	4.116854	101.2905	
T040	4.116869	101.2906	
T041	4.116897	101.2908	
T042	4.116858	101.291	
T043	4.116556	101.291	
T044	4.116173	101.291	
T045	4.115957	101.291	
T046	4.11578	101.291	
T047	4.115575	101.291	
T048	4.11536	101.291	
T049	4.115122	101.291	
T050	4.114968	101.2911	
T051	4.114734	101.2911	

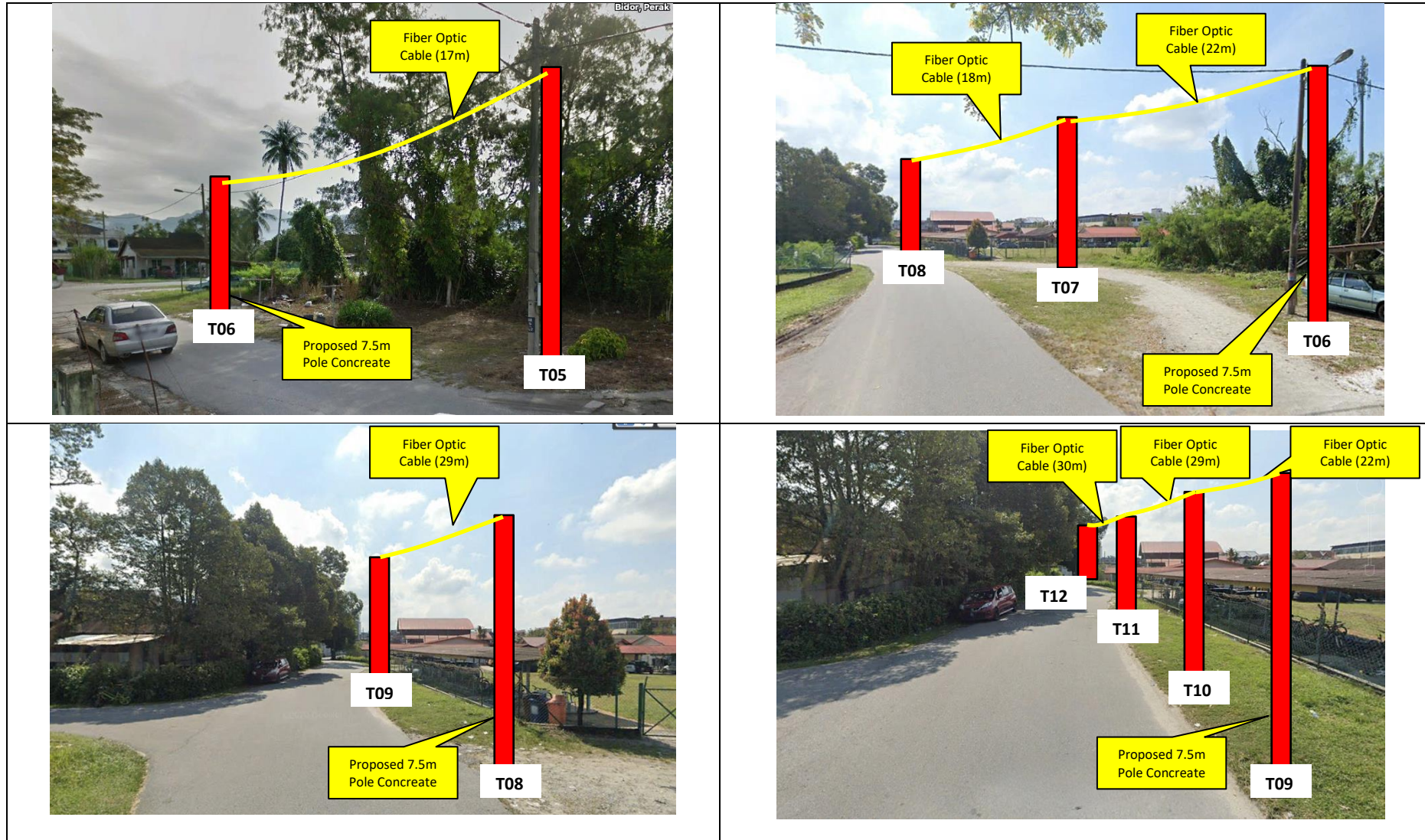
5.0 Prop New Pole Lat & Long Table (continued)

POLE NUMBER	LATITUDE	LONGITUDE	LOCAL AUTHORITIES
T052	4.114419	101.2911	Majlis Daerah
T053	4.114193	101.2911	
T054	4.113957	101.2911	
T055	4.113976	101.2914	
T056	4.11409	101.2917	
T057	4.114132	101.2919	
T058	4.114142	101.2922	
T059	4.114153	101.2924	
T060	4.114198	101.2926	
T061	4.114007	101.2927	
T062	4.11376	101.2927	
T063	4.113544	101.2928	
T064	4.113218	101.2929	
T065	4.113067	101.2929	
T066	4.112844	101.2928	
T067	4.112873	101.2926	
T068	4.112706	101.2925	
T069	4.112359	101.2927	
T070	4.112188	101.2928	
T071	4.111866	101.293	
T072	4.113436	101.2926	
T073	4.113403	101.2925	
T074	4.113338	101.2922	
T075	4.113297	101.292	
T076	4.113232	101.2917	
T077	4.113184	101.2915	
T078	4.113162	101.2913	
T079	4.113052	101.2912	
T080	4.112889	101.2913	
T081	4.112731	101.2914	
T082	4.112555	101.2914	
T083	4.112427	101.2911	
T084	4.112268	101.2916	
T085	4.112042	101.2918	
T086	4.111999	101.2916	
T087	4.11187	101.2912	

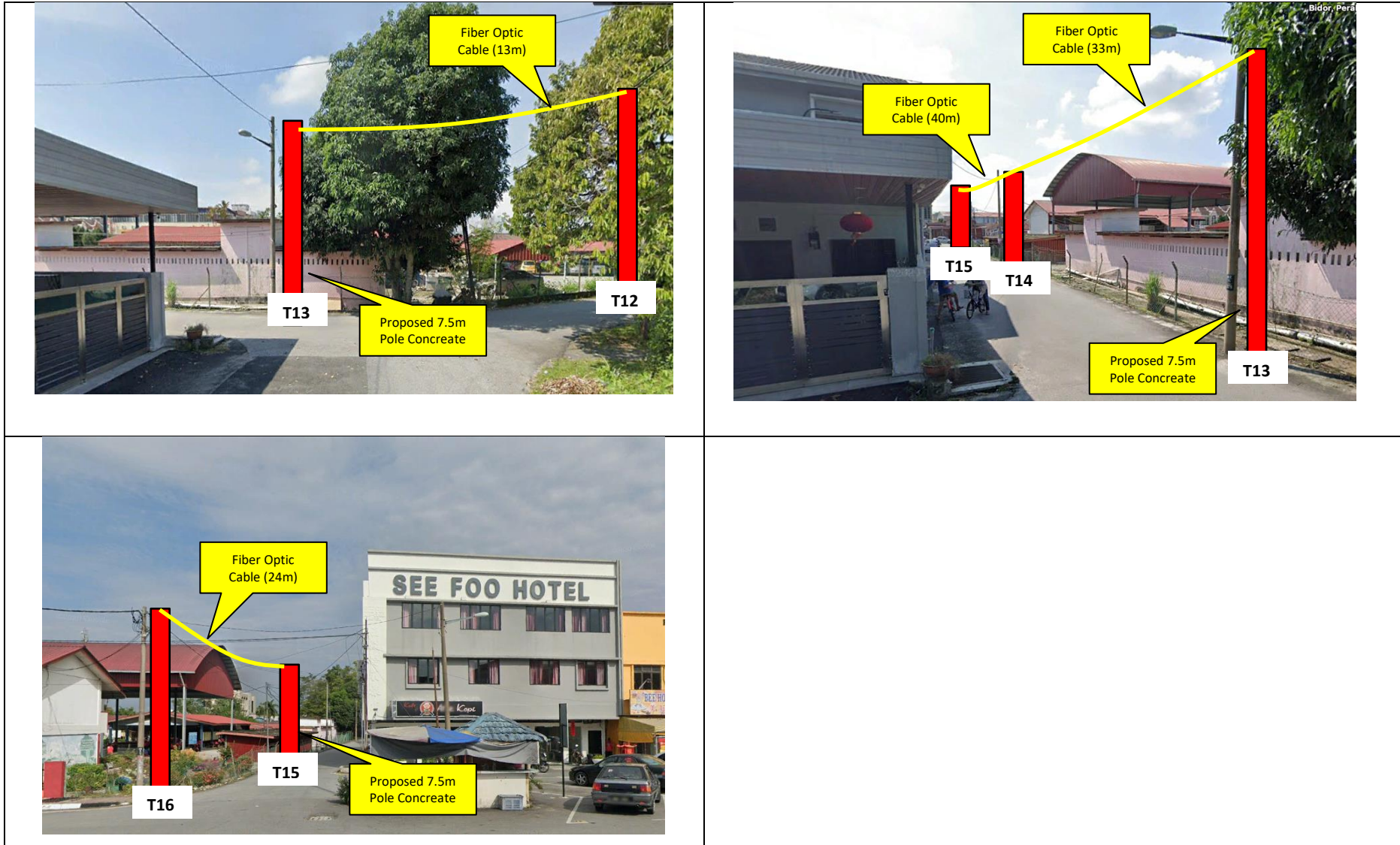
6.0 Site Photos – Proposed New Pole 7.5m



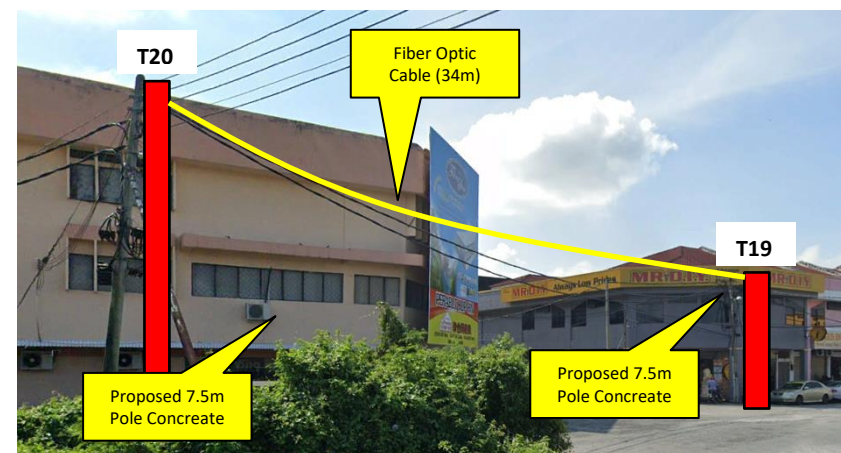
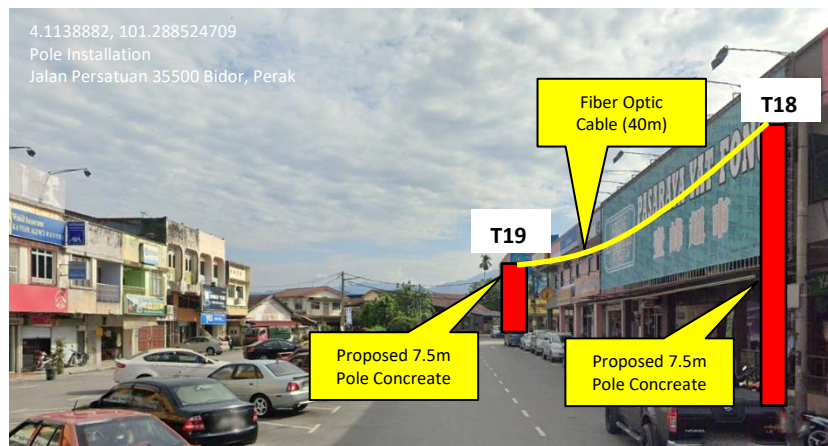
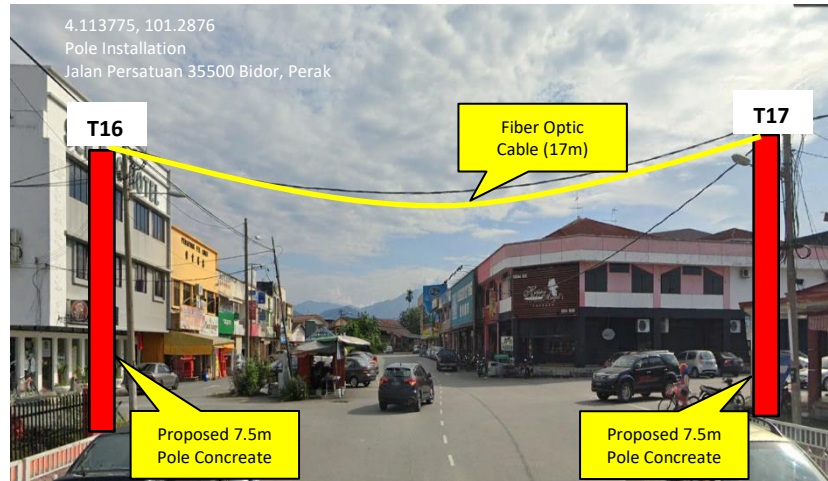
6.0 Site Photos – Proposed New Pole 7.5m



6.0 Site Photos – Proposed New Pole 7.5m

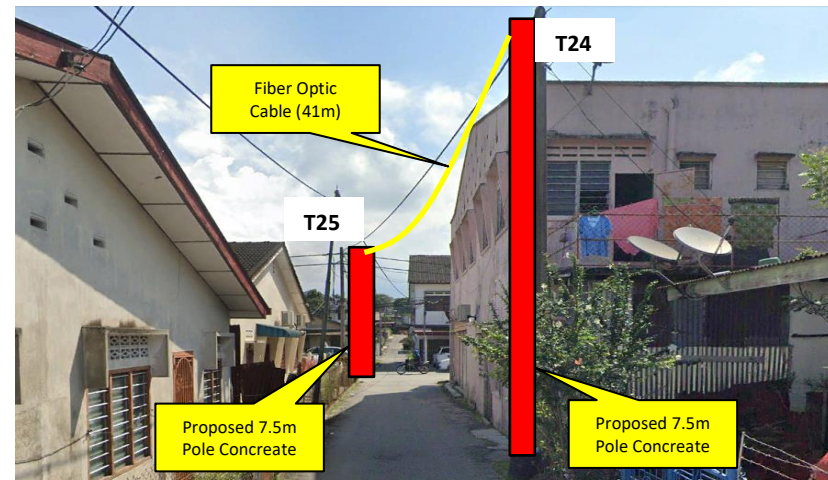
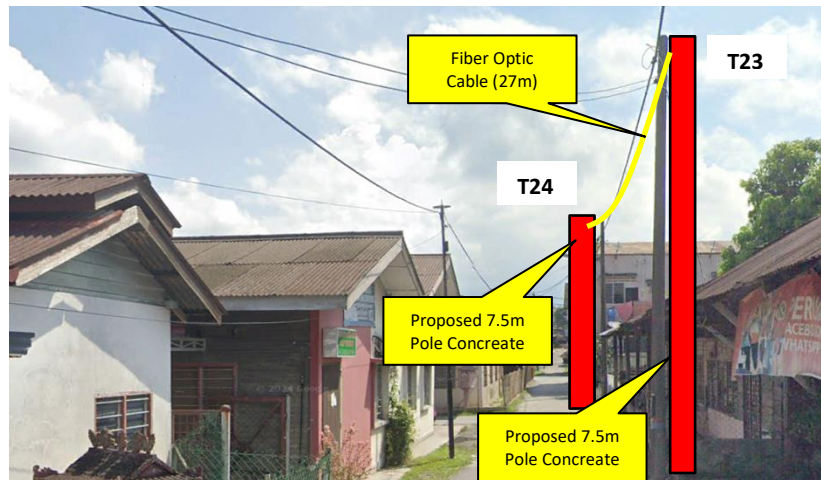
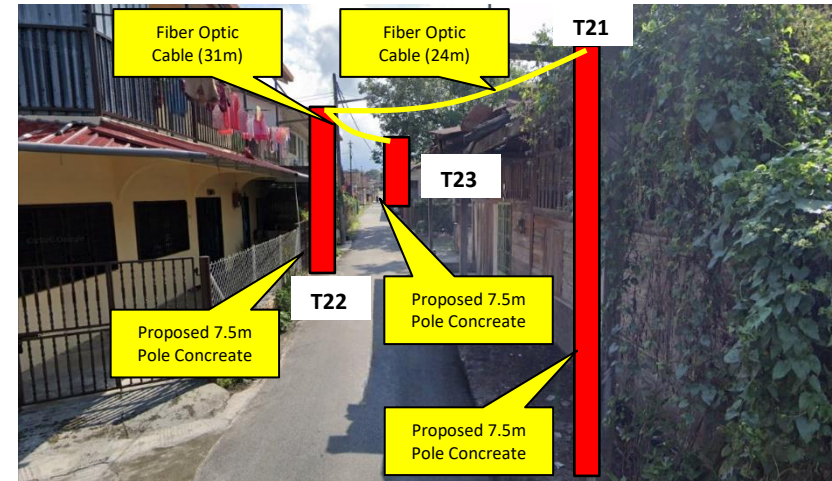


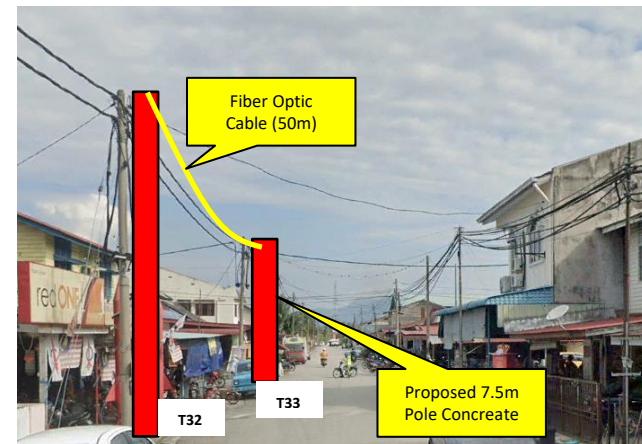
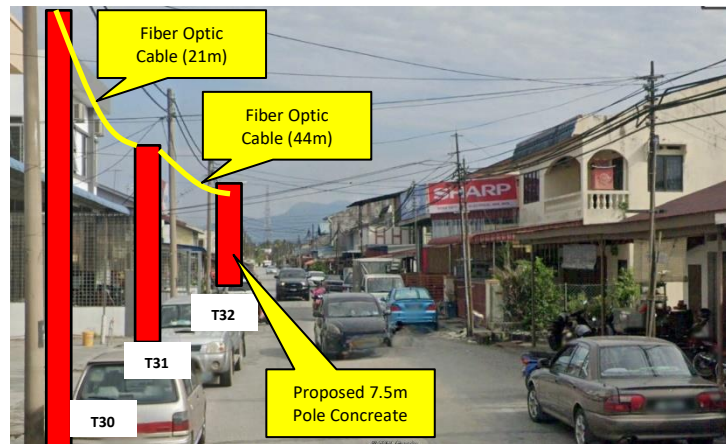
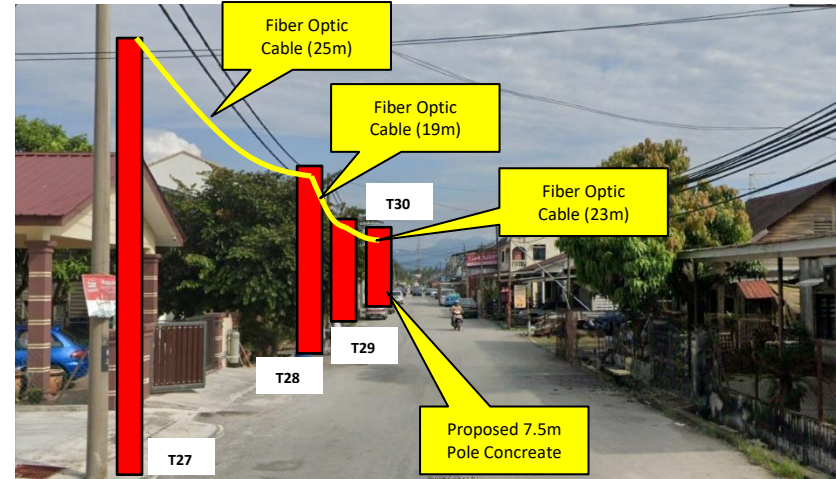
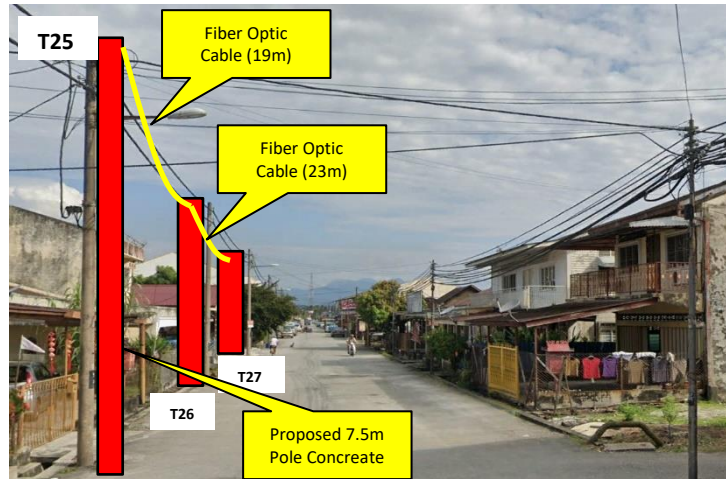
6.0 Site Photos – Proposed New Pole 7.5m

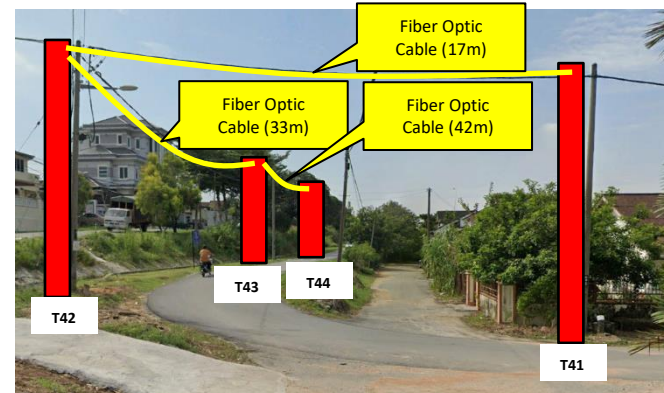
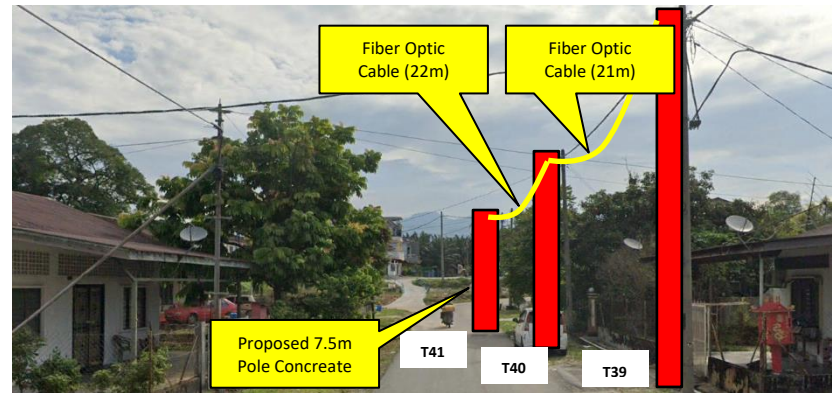
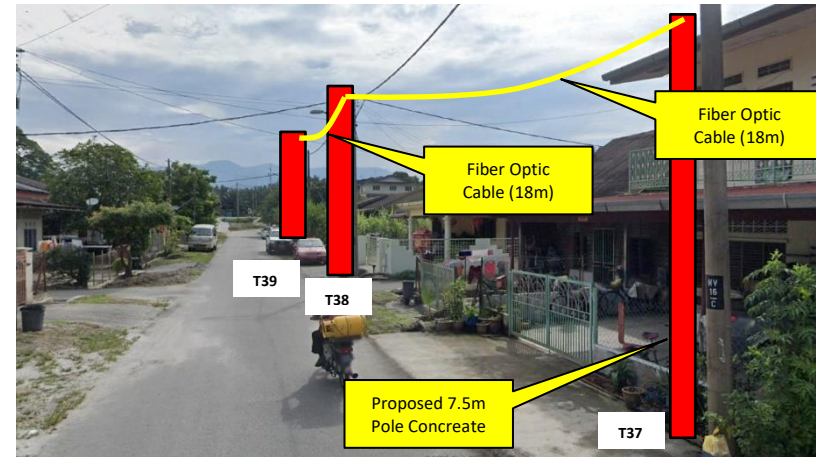
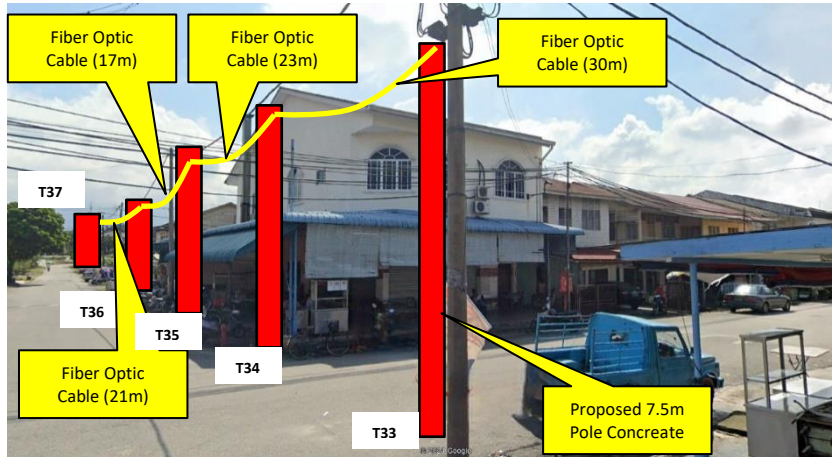


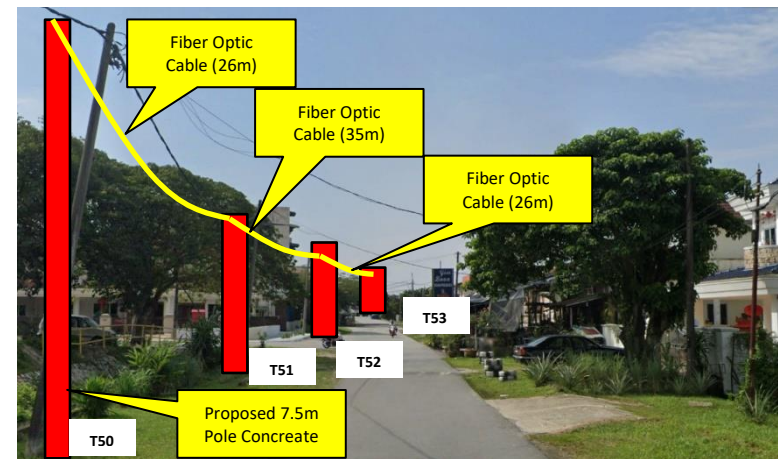
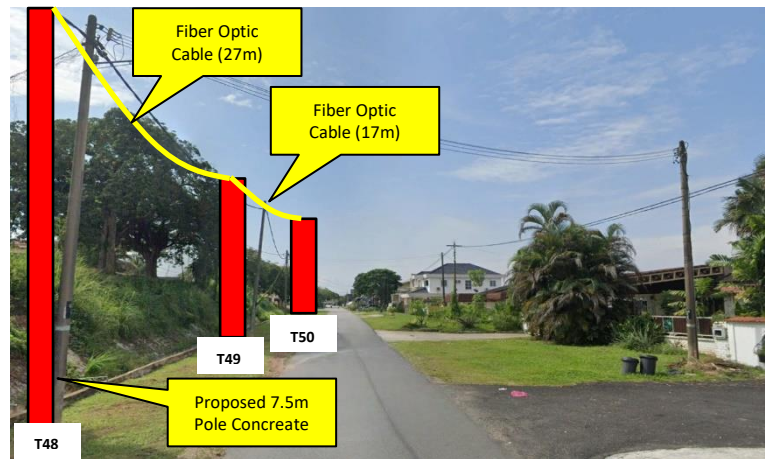
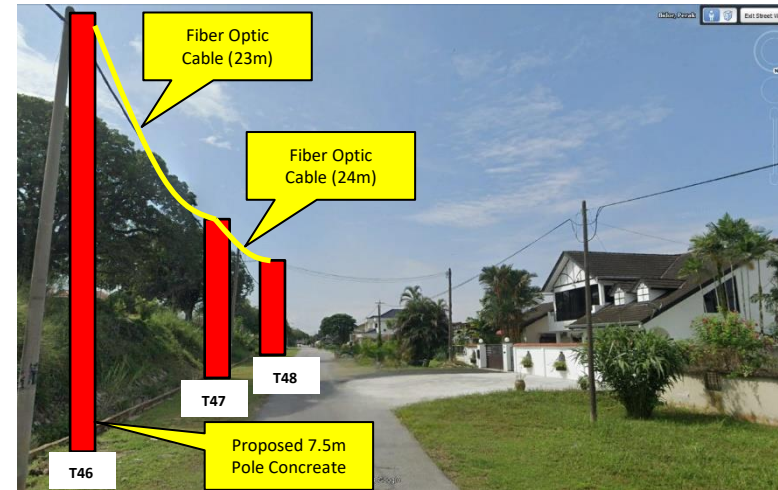
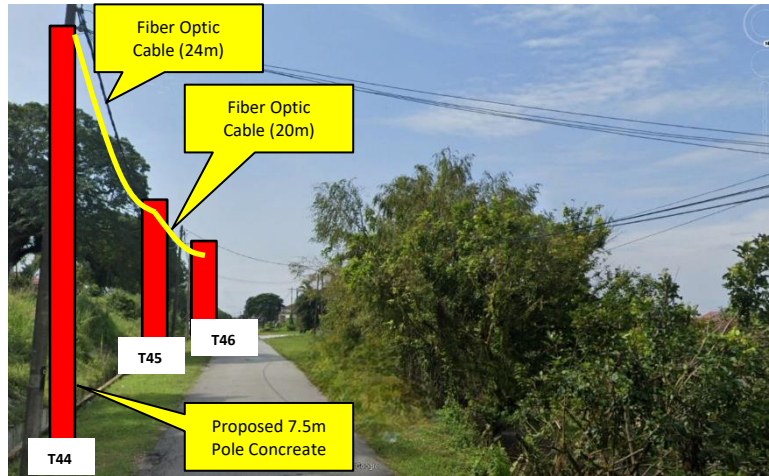


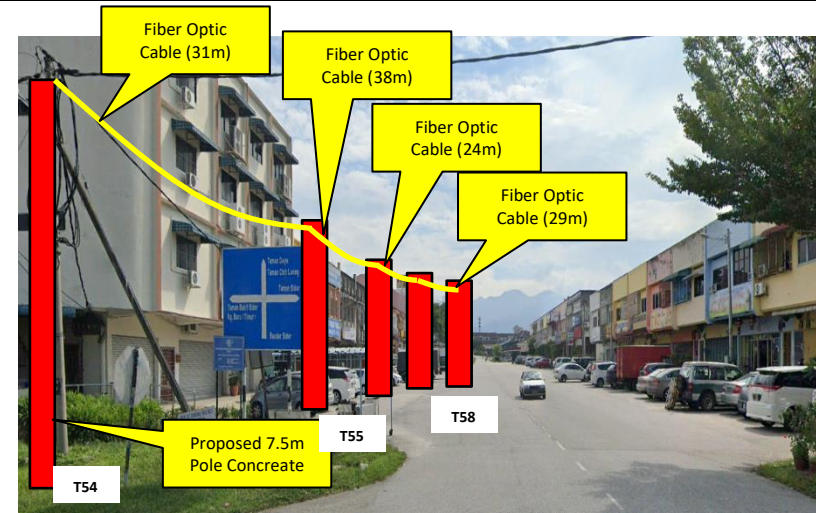
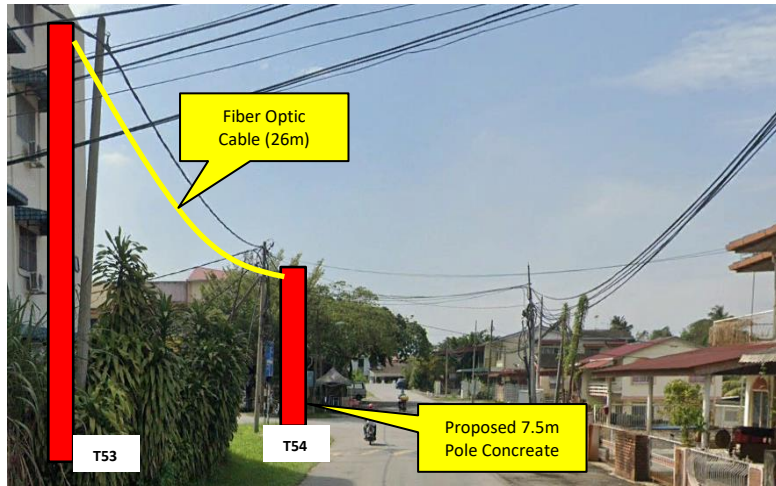
T04 – T05

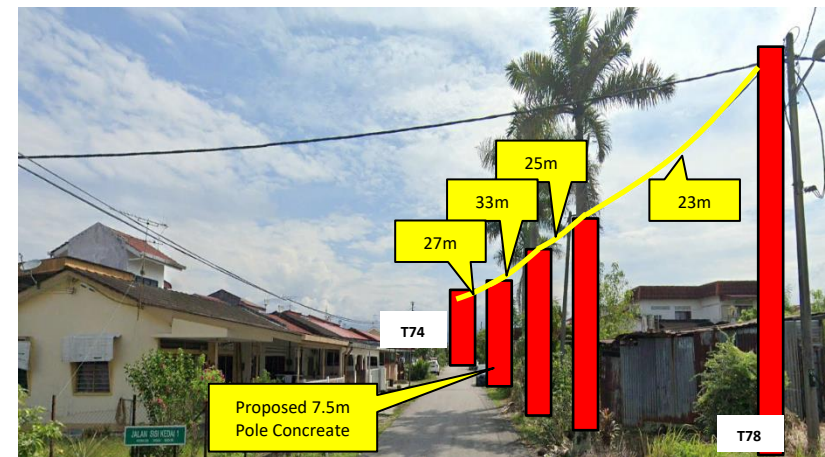
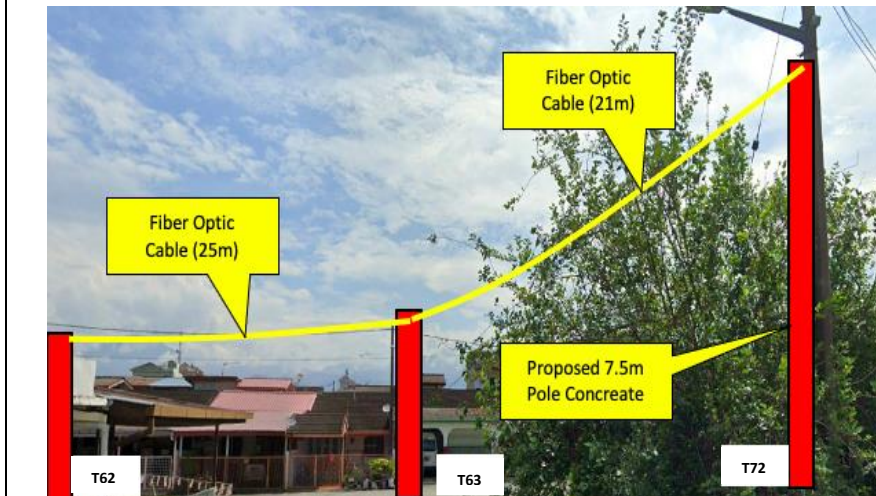
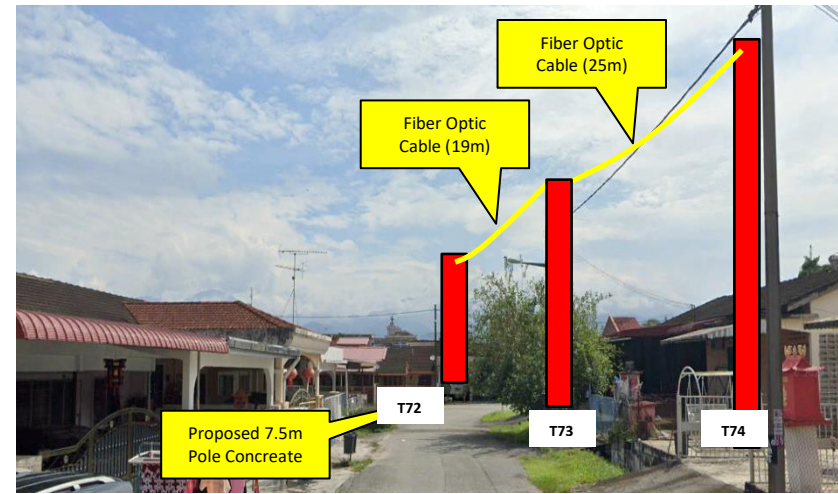
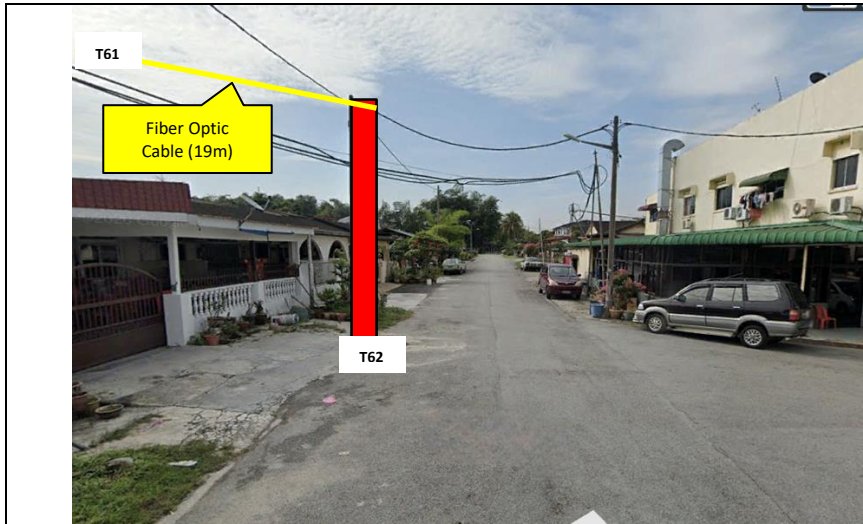


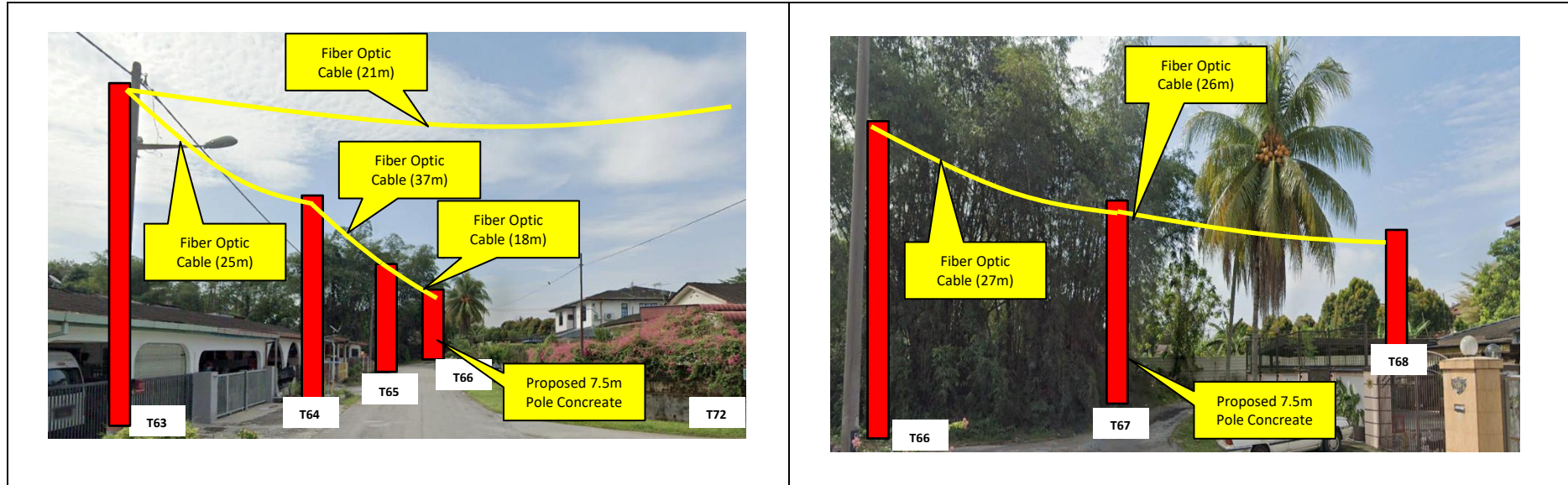




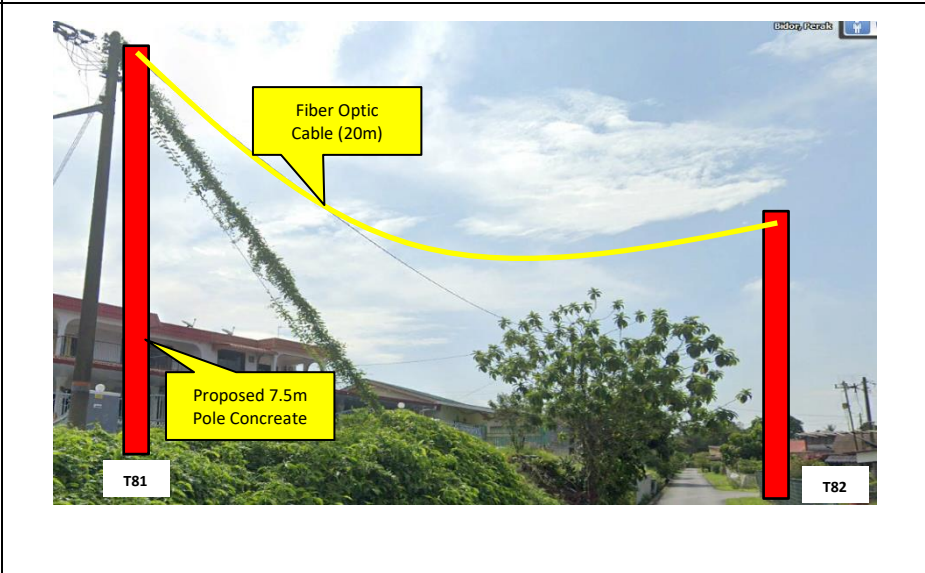
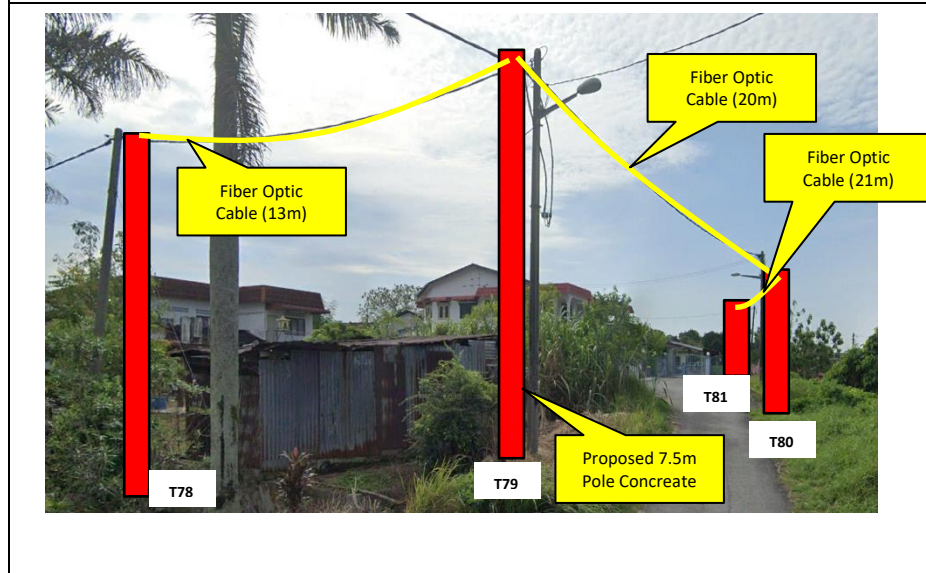
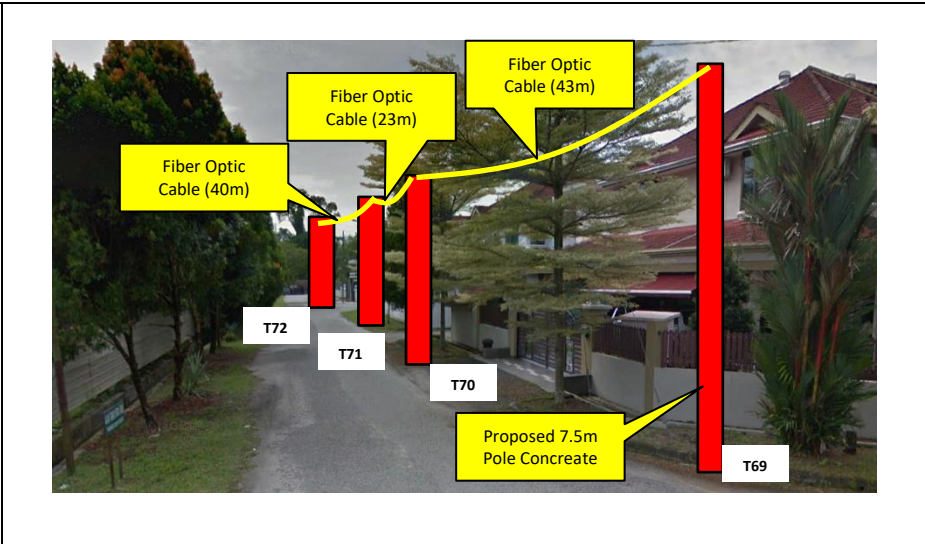
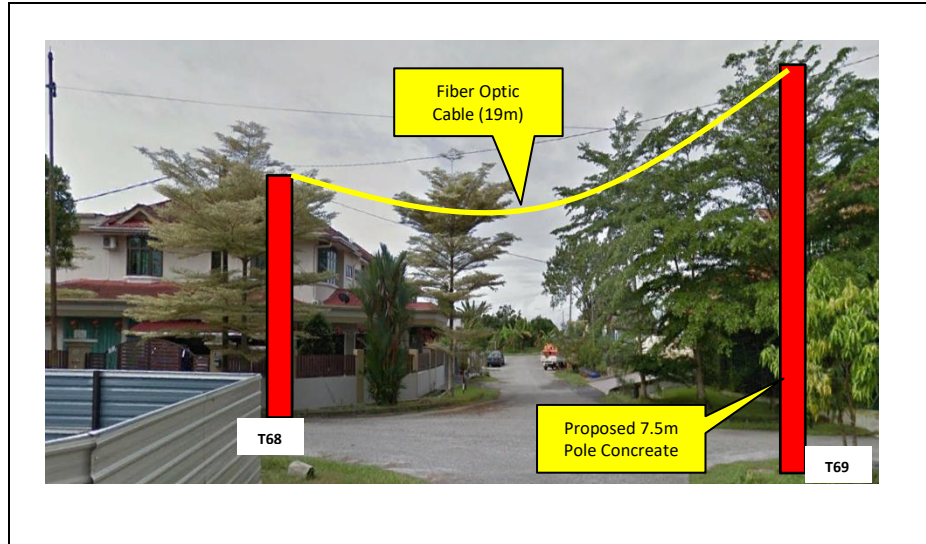


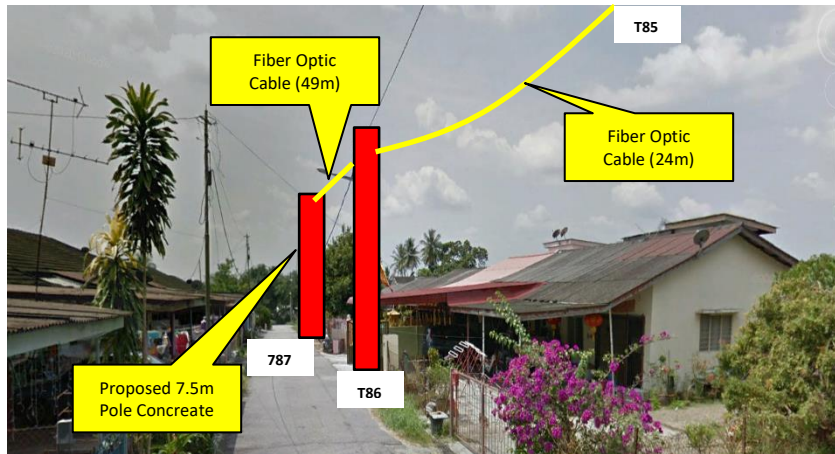
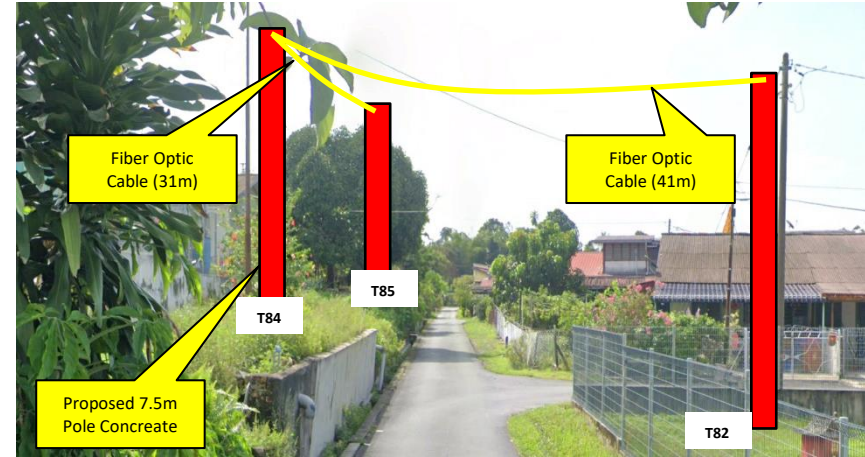
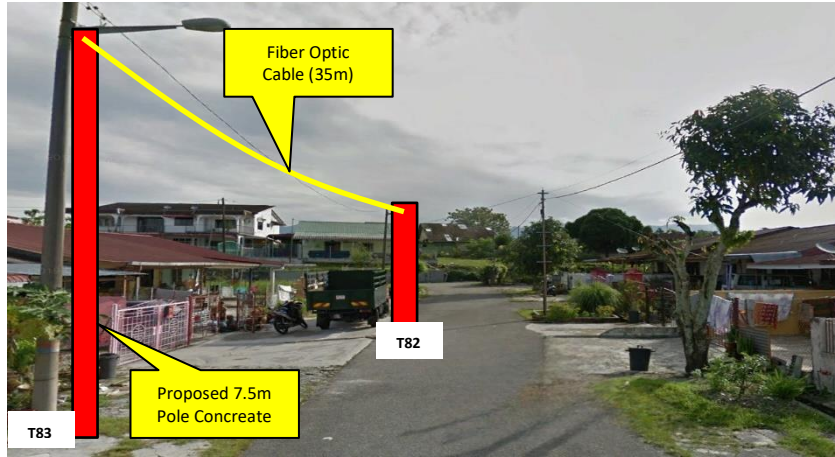






Site Photos – Proposed New Pole





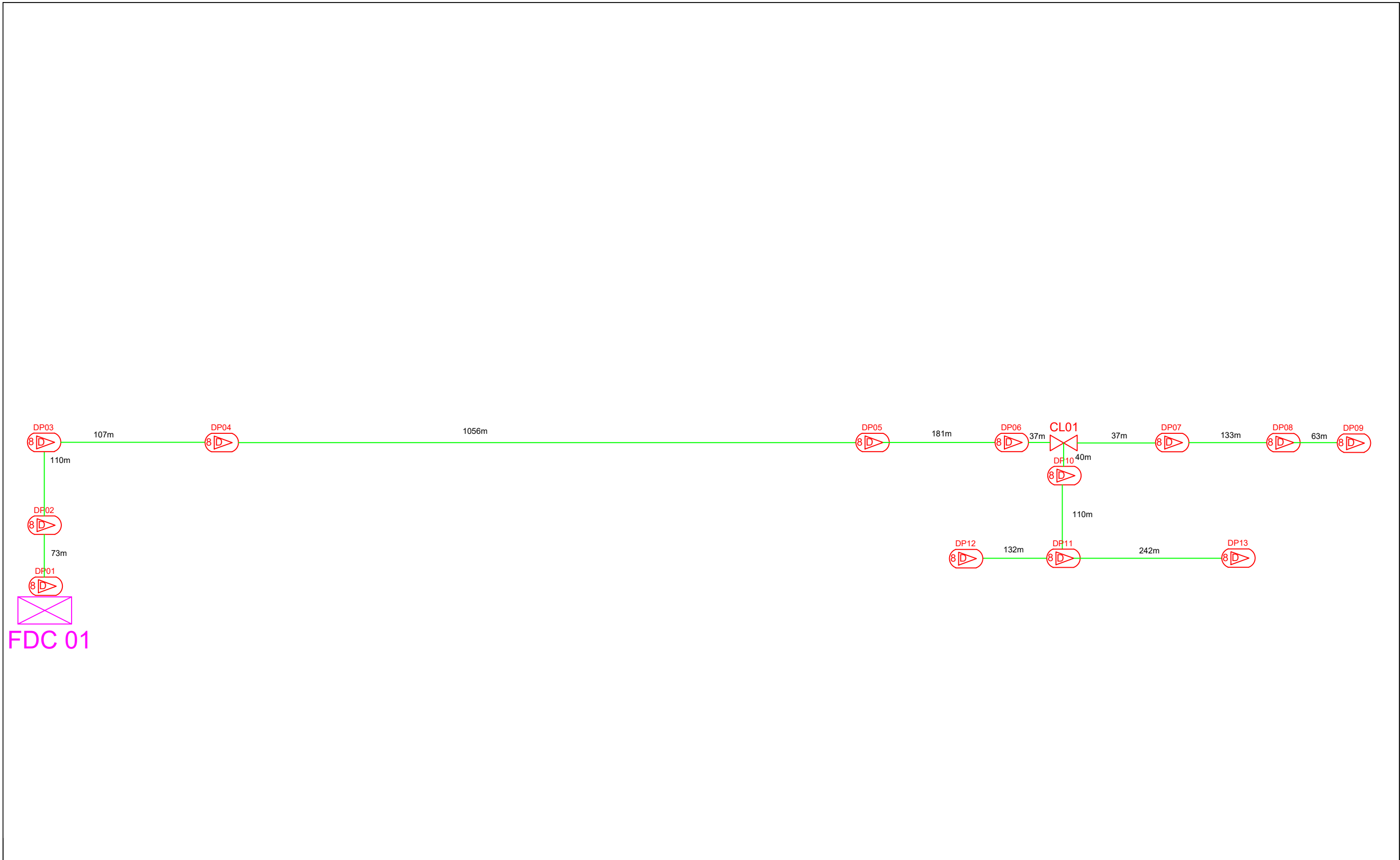


PROJEK PENYEDIAAN DAN PENYELENGGARAAN POINT OF PRESENCE (POP) FASA 2: HAB INFRASTRUKTUR GENTIAN OPTIK BERHAMPIRAN DENGAN SEKOLAH, KAWASAN PERINDUSTRIAN, PREMIS KERAJAAN DAN KOMUNITI SEKITARNYA OLEH KEMENTERIAN KOMUNIKASI MALAYSIA - ZON UTARA (KKMM.400-11/17/132(1))



3rd Parties Dependencies

No.	Local Council/ Authority	Remark
1	Majlis Daerah Tapah	
2		
3		
4		
5		
6		



12C FOC	Installed 1:4 / 1:8 / 1:32 splitter	○	Installed Pole (9m)	S	Suspension	■	New Manhole (PIT)	—	Micro Trenching (meter)	MH1	MH NO.	
24C FOC	2076m Installed Patch Card	⊙	Installed Pole (7.5m)	81	T	Tension	■	New Manhole (JRC7)	—	TKS-1	Existing TNB Pole NO.	
48C FOC	1 FDC	⊙	Installed Pole (6.7m)		⊙	Pole Ring	—	FDP Boundary	15	POO1	New Pole NO.	
96C FOC	1 Closure	⊙	Installed TNB Pole		⊙	FDP with (1:8) splitter	15	HDD (meter)	#	CL01	Closure NO.	1
144C FOC	Existing Closure	⊙	Installed Riser		⊙	Existing Manhole		Open Cut (Meter)	CO1	FDC NO.	DP1	FDP NO.

ACTUAL HOMEPASS: 104 Units

KEY PLAN: DSIDE POP 2	PROJECT OWNER: 	MAIN CONTRACTOR: 	SUB-CONTRACTOR: 	PROJECT TITLE: D-SIDE ABB0047 SEKOLAH KEBANGSAAN SERI BIDOR	DRAWING TITLE: SLD DSIDE SK SERI BIDOR	Design By: Siti Zulaikha Binti Ruslan Date : 05/08/2024
					PROJECT PHASE: POP 2	Drawn By: Siti Zulaikha Binti Ruslan Scale : Not to Scale
						Check By: Job Number: 1
						DRAWING NUMBER: Sheet: 1/1
						THIS PRINT AND ITS COPYRIGHT ARE THE PROPERTY OF ALLO TECHNOLOGY SDN BHD Size: A1