

## TECHNICAL PROPOSAL

### POP2 ABC9005 SEKOLAH JENIS KEBANGSAAN (CINA) YING SING (D-SIDE)

Company Name	:	WCWL COMMUNICATIONS SDN BHD
Company Address	:	127, Jalan PUJ 3/3, Taman Puncak Jalil 43300 Subang Jaya Selangor
Prepared By	:	Nur Syahidah Izzatie
Date	:	19/11/2024



POINT A

POINT B

**Starting Point**

Site / Boundary Name	:	SEKOLAH JENIS KEBANGSAAN (CINA) YING SING
Address	:	Jalan Malim Nawar
District	:	Kampar
Postcode	:	31700
State	:	Perak
GPS Coordinate	:	4.352778, 101.117485
LRD	:	A

**End Point**

Site / Boundary Name	:	SEKOLAH JENIS KEBANGSAAN (CINA) YING SING
Address	:	Jalan Malim Nawar
District	:	Kampar
Postcode	:	31700
State	:	Perak
GPS Coordinate	:	4.349306, 101.118570
LRD	:	B



PROJEK PENYEDIAAN DAN PENYELENGGARAAN POINT OF PRESENCE (POP) FASA 2: HAB INFRASTRUKTUR GENTIAN OPTIK BERHAMPIRAN DENGAN SEKOLAH, KAWASAN PERINDUSTRIAN, PREMIS KERAJAAN DAN KOMUNITI SEKITARNYA OLEH KEMENTERIAN KOMUNIKASI MALAYSIA - ZON UTARA (KKMM.400-11/17/132(1))



### Work Summary

No	Proposed Distance and Method	Unit	Qty
1	Horizontal Directional Drilling (HDD)	m	0
2	Carriage Way Open trench (CW)	m	0
3	Grass Verge Open Trenching (GV)	m	0
4	Micro trenching (MT)	m	0
	Total		0

	Other Information	Unit	Qty
1	Proposed Manhole	EA	0
2	Proposed Pole	EA	71
3	Joint Closure	EA	5
4	Estimated time required for completion	days	30



PROJEK PENYEDIAAN DAN PENYELENGGARAAN POINT OF PRESENCE (POP) FASA 2: HAB INFRASTRUKTUR GENTIAN OPTIK BERHAMPIRAN DENGAN SEKOLAH, KAWASAN PERINDUSTRIAN, PREMIS KERAJAAN DAN KOMUNITI SEKITARNYA OLEH KEMENTERIAN KOMUNIKASI MALAYSIA - ZON UTARA (KKMM.400-11/17/132(1))



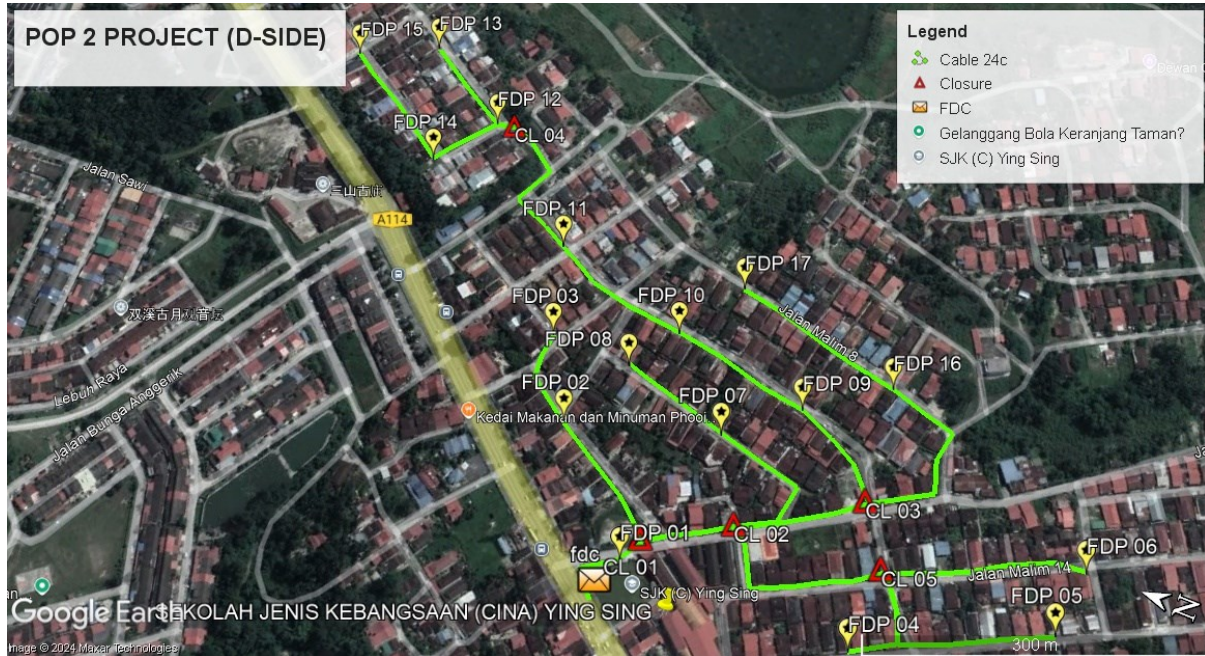
### Local Authority Summary

#### 1. Daerah Kampar

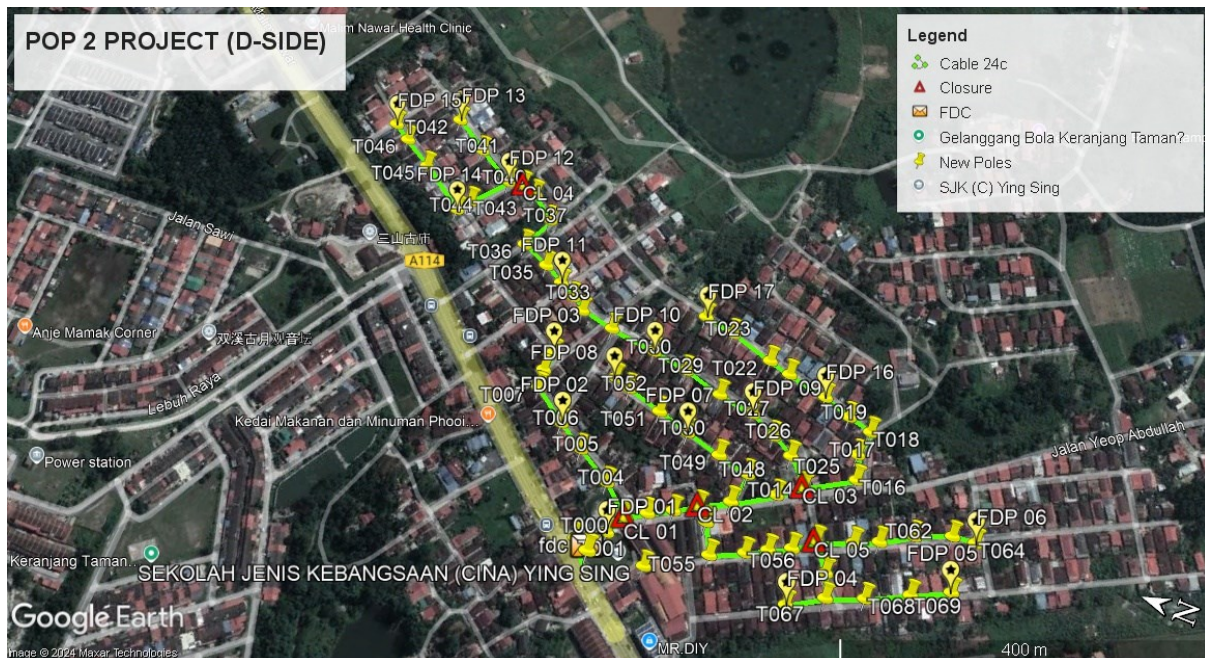
Bil	Items	Owner	Quantity	Distance(m)
1	HDD	JKR	-	-
		Majlis	-	-
		Estate / Private Land	-	-
2	New Pole	JKR	1pcs	29m
		Majlis	70pcs	2642m
		Estate / Private Land	-	-
3	Existing TNB Pole	JKR	-	-
		Majlis	-	-
		Estate / Private Land	-	-
Total				2671m

Site Plan – KMZ (Overview site area)

Proposed FDP and Closure



Proposed New Pole



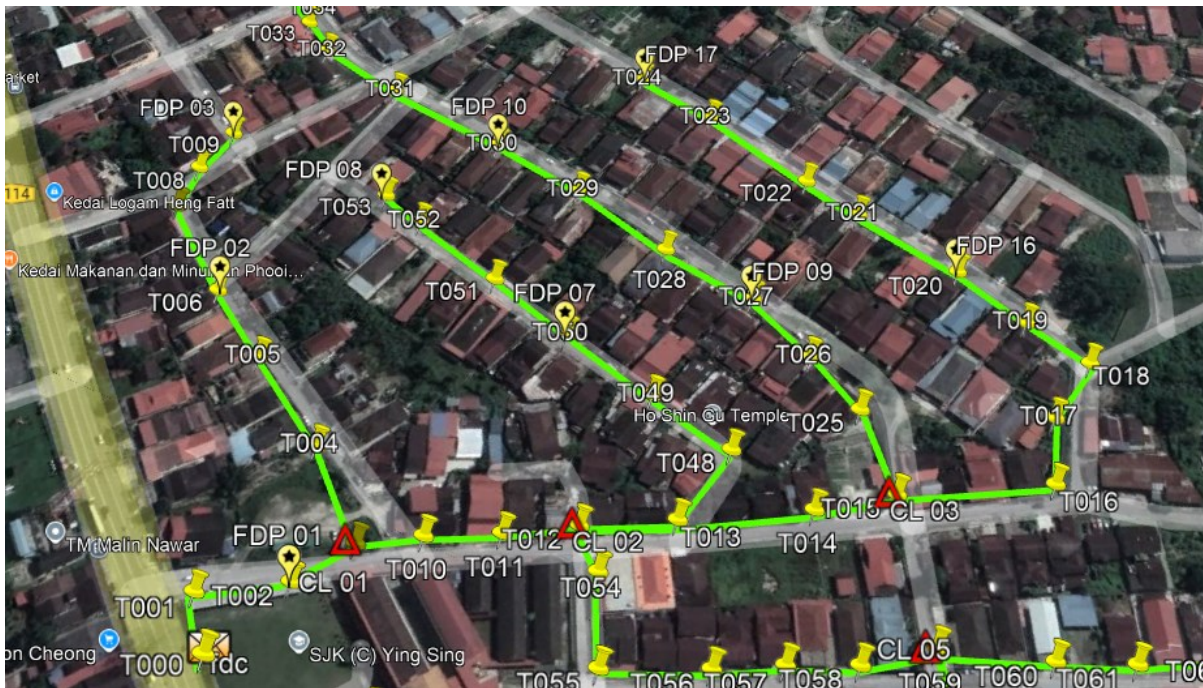
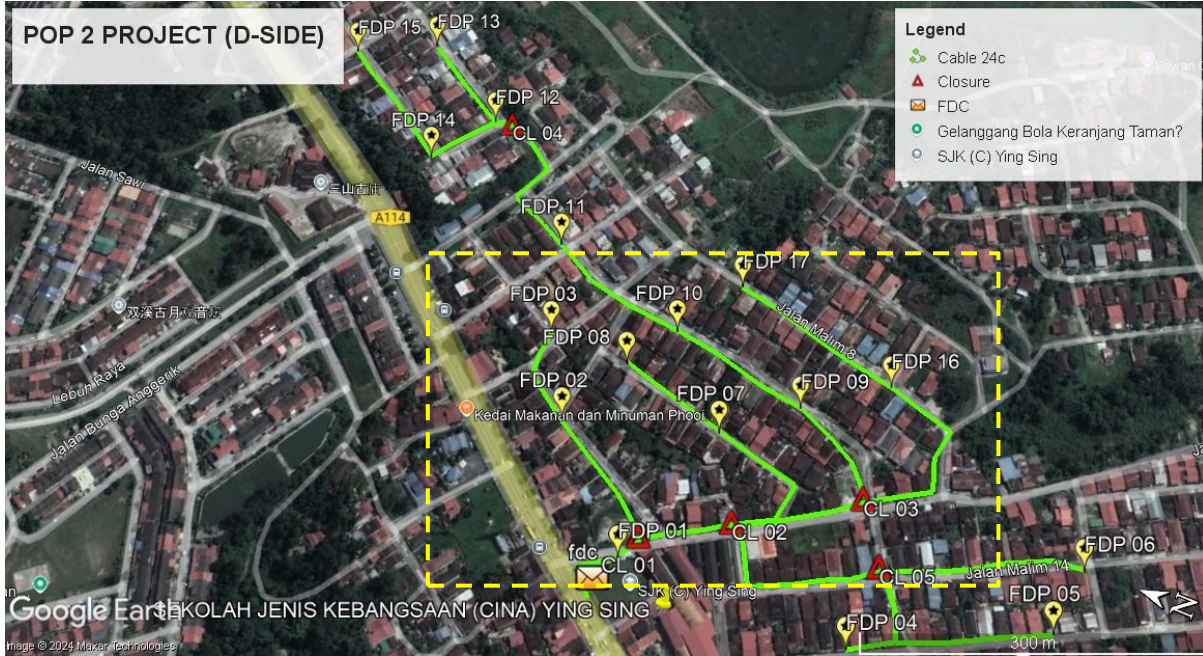
**Site Plan – KMZ Routing (All Local Authority)**



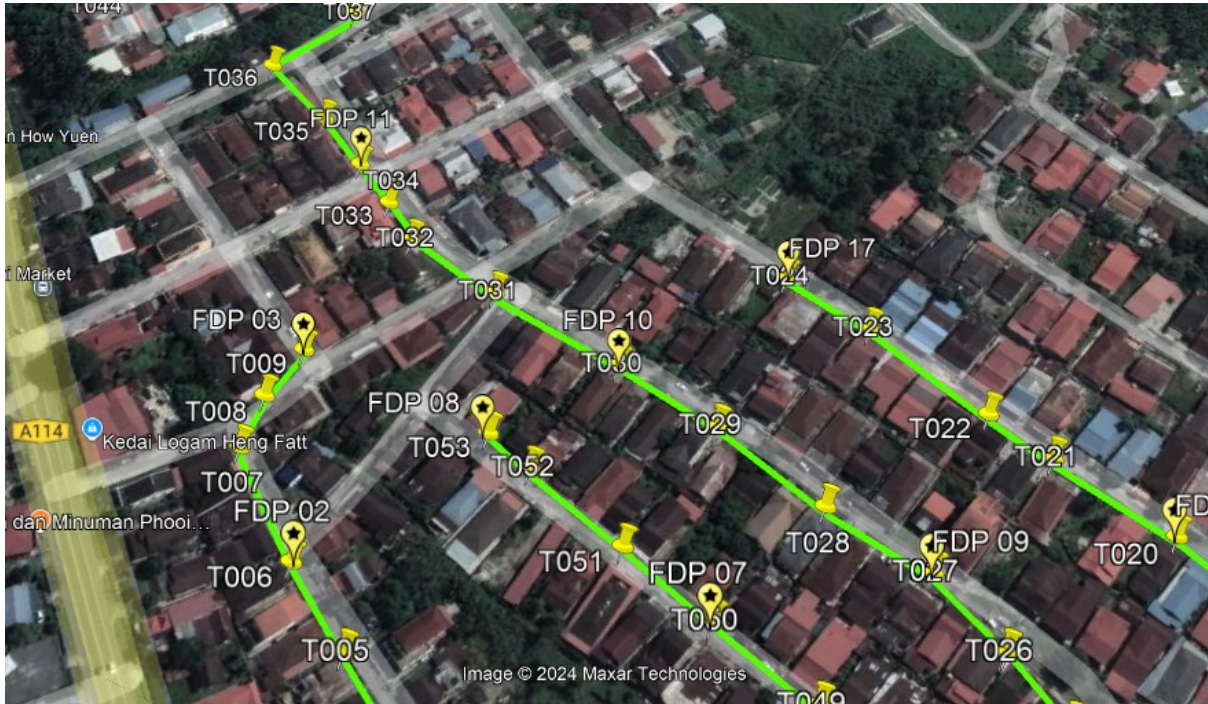
**Blue - Majlis Perbandaran Kampar**

Site Plan – KMZ Routing (All site area)

Route 1

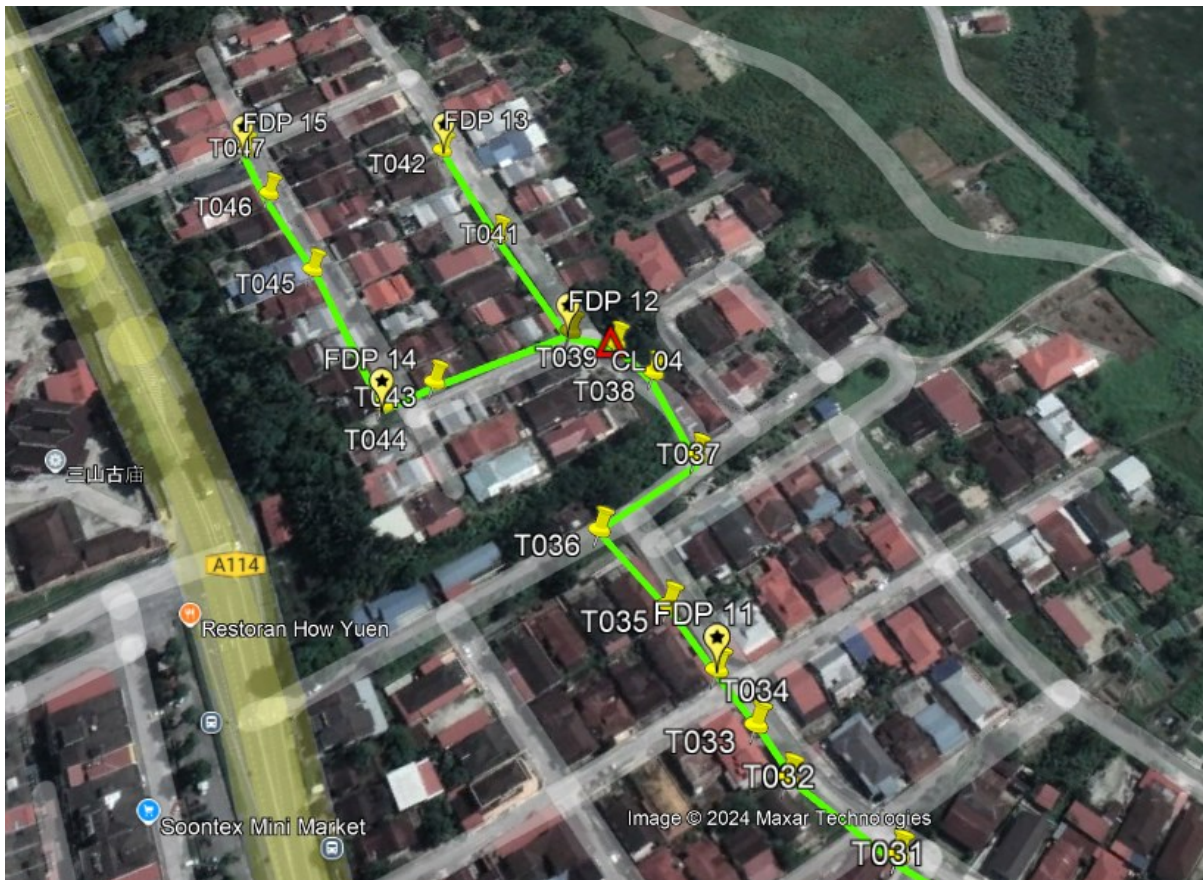
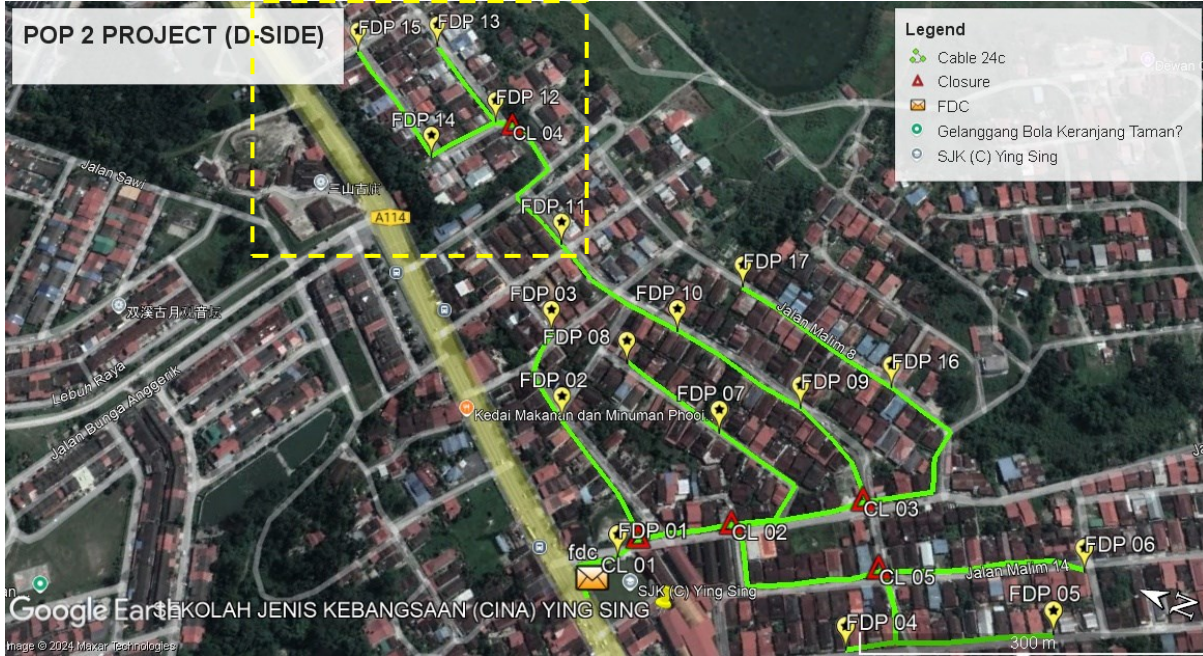


Route 1.1



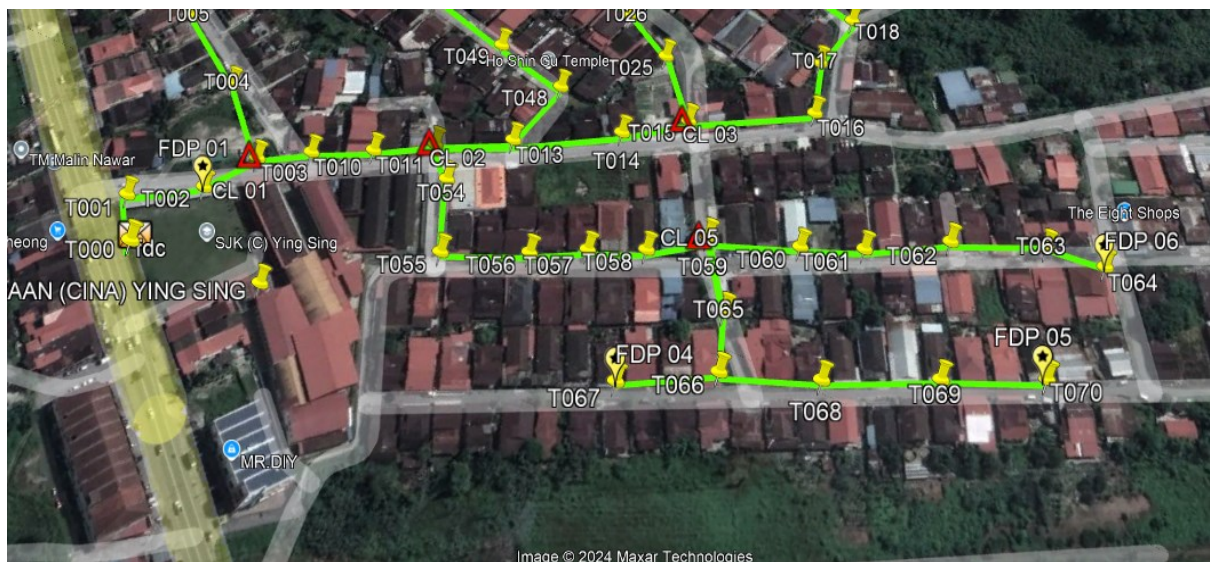
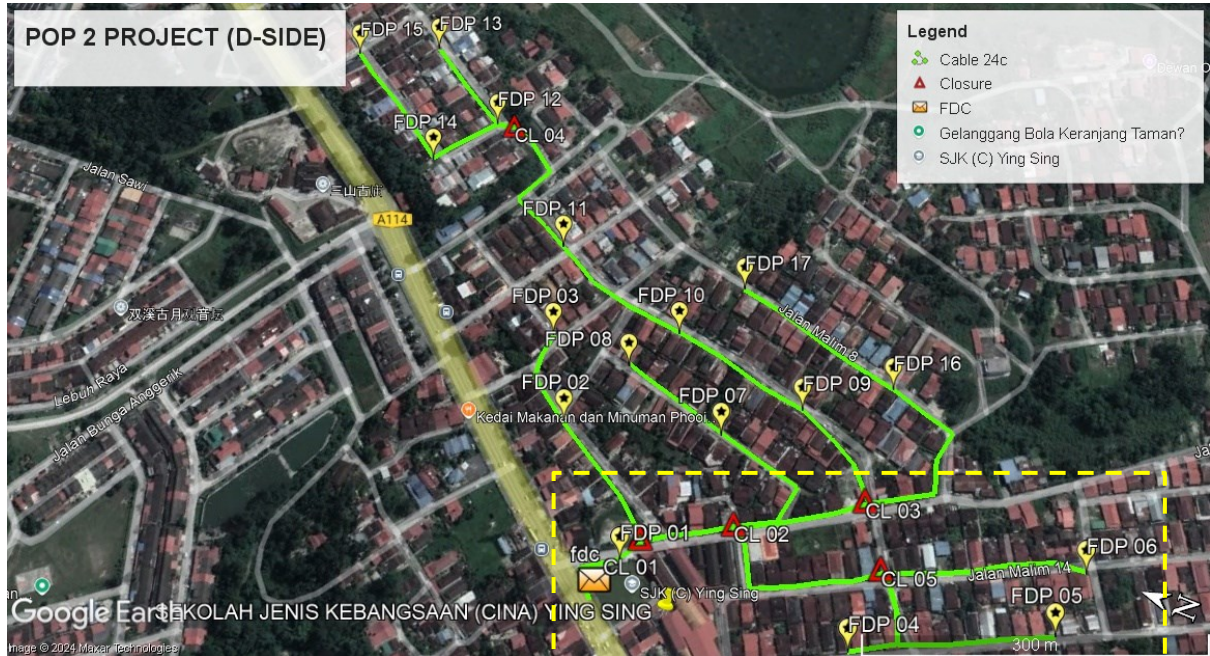
**Route 1.2**

Route 2



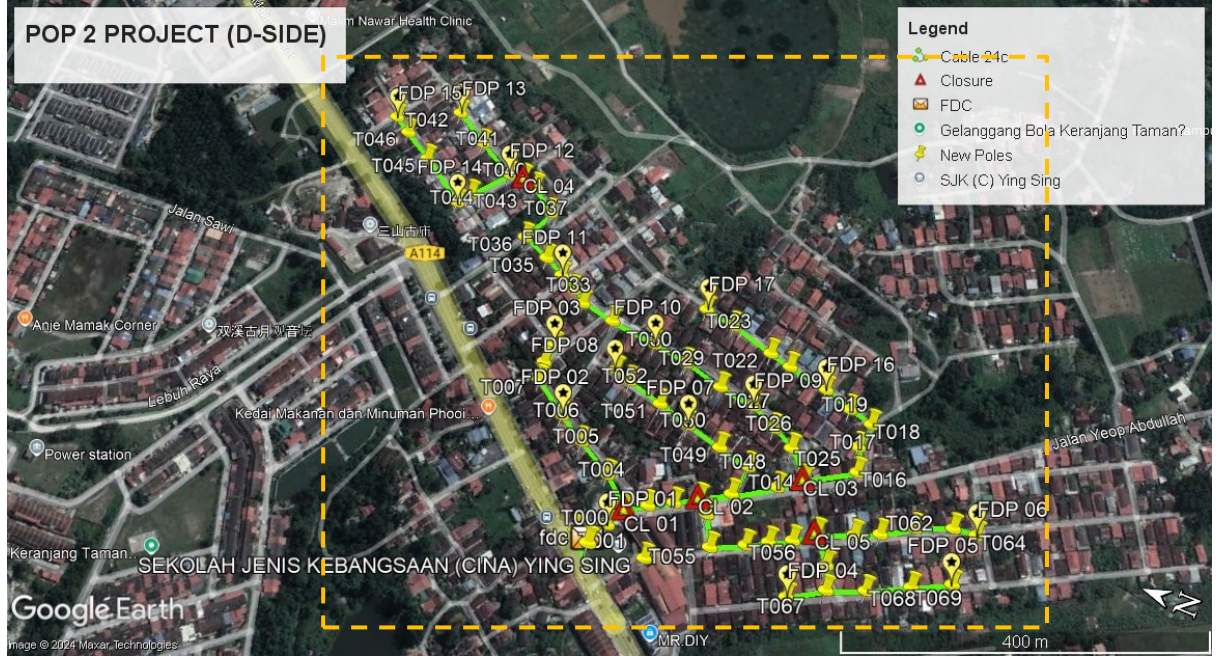
Route 2.1

**Route 3**



**Route 3.1**

**Site Plan – KMZ Routing (Proposed new Pole)**



**Overall Pole (Proposed New)**

No.	Pole & Manhole ID	Distance	Latitude	Longitude	Local Authority
1	T000	0.00	4.352952365	101.1176759	JKR Kampar
2	T001	34.92	4.352685948	101.1178415	Majlis Perbandaran Kampar
3	T002	26.92	4.352563686	101.1180501	Majlis Perbandaran Kampar
4	T003	44.39	4.352870432	101.1183049	Majlis Perbandaran Kampar
5	T004	47.66	4.353240403	101.1185204	Majlis Perbandaran Kampar
6	T005	37.59	4.353529369	101.1186952	Majlis Perbandaran Kampar
7	T006	48.63	4.353882291	101.1189526	Majlis Perbandaran Kampar
8	T007	21.53	4.3539098	101.119144	Majlis Perbandaran Kampar
9	T008	22.62	4.353882192	101.1193453	Majlis Perbandaran Kampar
10	T009	212.78	4.35237358	101.1181716	Majlis Perbandaran Kampar
11	T010	559.42	4.35646849	101.1210846	Majlis Perbandaran Kampar
12	T011	25.16	4.356277477	101.1209637	Majlis Perbandaran Kampar
13	T012	42.31	4.355957453	101.1207587	Majlis Perbandaran Kampar
14	T013	67.41	4.355457354	101.1204173	Majlis Perbandaran Kampar
15	T014	19.52	4.355353904	101.1205588	Majlis Perbandaran Kampar
16	T015	52.02	4.355056783	101.1209195	Majlis Perbandaran Kampar
17	T016	52.69	4.355471285	101.121148	Majlis Perbandaran Kampar
18	T017	48.82	4.355838785	101.1213873	Majlis Perbandaran Kampar
19	T018	115.43	4.354902065	101.1209425	Majlis Perbandaran Kampar
20	T019	19.11	4.354736887	101.1208956	Majlis Perbandaran Kampar
21	T020	37.76	4.354472933	101.1206826	Majlis Perbandaran Kampar
22	T021	42.86	4.354621863	101.1203276	Majlis Perbandaran Kampar
23	T022	36.86	4.354317289	101.1201978	Majlis Perbandaran Kampar



PROJEK PENYEDIAAN DAN PENYELENGGARAAN POINT OF PRESENCE (POP) FASA 2: HAB INFRASTRUKTUR GENTIAN OPTIK BERHAMPIRAN DENGAN SEKOLAH, KAWASAN PERINDUSTRIAN, PREMIS KERAJAAN DAN KOMUNITI SEKITARNYA OLEH KEMENTERIAN KOMUNIKASI MALAYSIA - ZON UTARA (KKMM.400-11/17/132(1))



24	T023	27.86	4.354096668	101.1200797	Majlis Perbandaran Kampar
25	T024	22.44	4.353921315	101.1199803	Majlis Perbandaran Kampar
26	T025	19.91	4.353774094	101.1198787	Majlis Perbandaran Kampar
27	T026	40.80	4.353413017	101.1198157	Majlis Perbandaran Kampar
28	T027	55.99	4.35291468	101.1197474	Majlis Perbandaran Kampar
29	T028	43.15	4.352532213	101.1196847	Majlis Perbandaran Kampar
30	T029	47.79	4.352116438	101.1195777	Majlis Perbandaran Kampar
31	T030	42.35	4.351740776	101.1195176	Majlis Perbandaran Kampar
32	T031	34.72	4.351462052	101.1193778	Majlis Perbandaran Kampar
33	T032	29.76	4.351225813	101.1192527	Majlis Perbandaran Kampar
34	T033	37.67	4.351001346	101.1189995	Majlis Perbandaran Kampar
35	T034	60.69	4.350528141	101.1192703	Majlis Perbandaran Kampar
36	T035	28.72	4.350601208	101.1195177	Majlis Perbandaran Kampar
37	T036	30.53	4.350549683	101.1197871	Majlis Perbandaran Kampar
38	T037	29.24	4.350803988	101.1198528	Majlis Perbandaran Kampar
39	T038	34.69	4.351097684	101.1199571	Majlis Perbandaran Kampar
40	T039	48.13	4.351520779	101.1200461	Majlis Perbandaran Kampar
41	T040	27.00	4.351755407	101.1201074	Majlis Perbandaran Kampar
42	T041	52.96	4.352213124	101.1202373	Majlis Perbandaran Kampar
43	T042	37.12	4.352540318	101.1203018	Majlis Perbandaran Kampar
44	T043	219.46	4.351233869	101.1188254	Majlis Perbandaran Kampar
45	T044	51.56	4.351634227	101.1185926	Majlis Perbandaran Kampar
46	T045	36.33	4.351572136	101.118913	Majlis Perbandaran Kampar
47	T046	38.19	4.351906763	101.1189888	Majlis Perbandaran Kampar

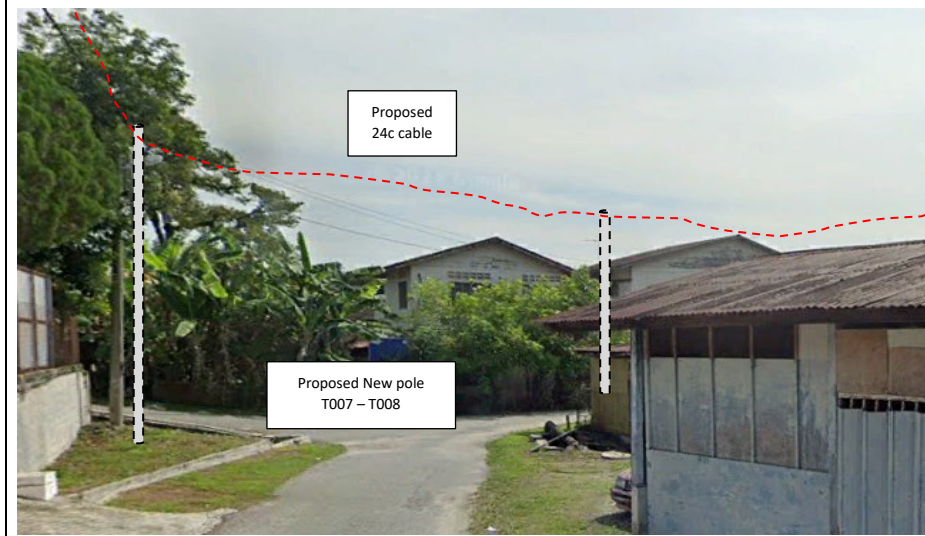
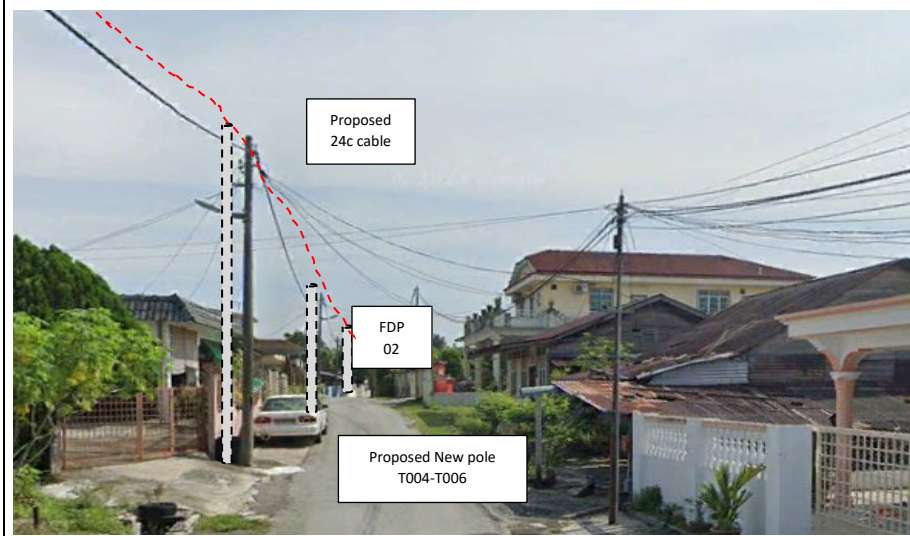
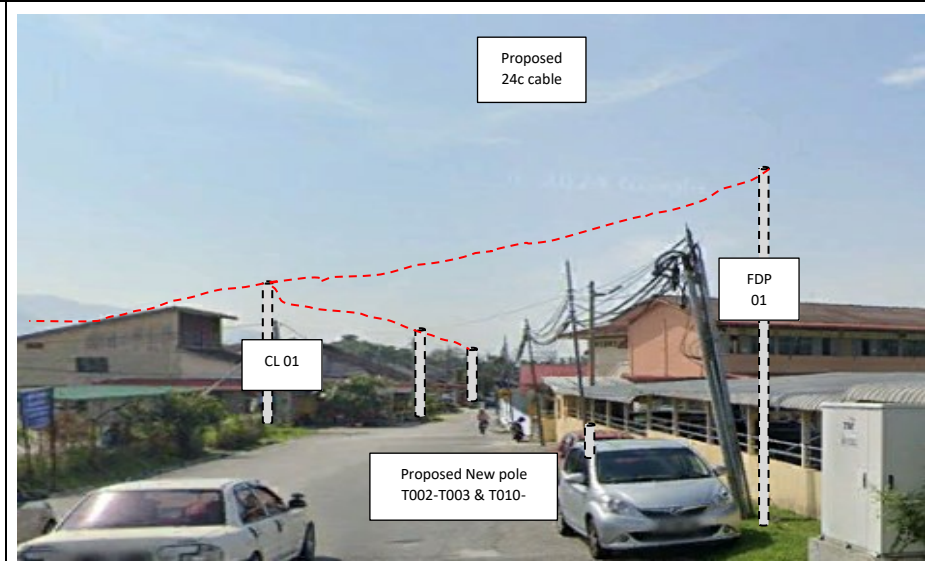
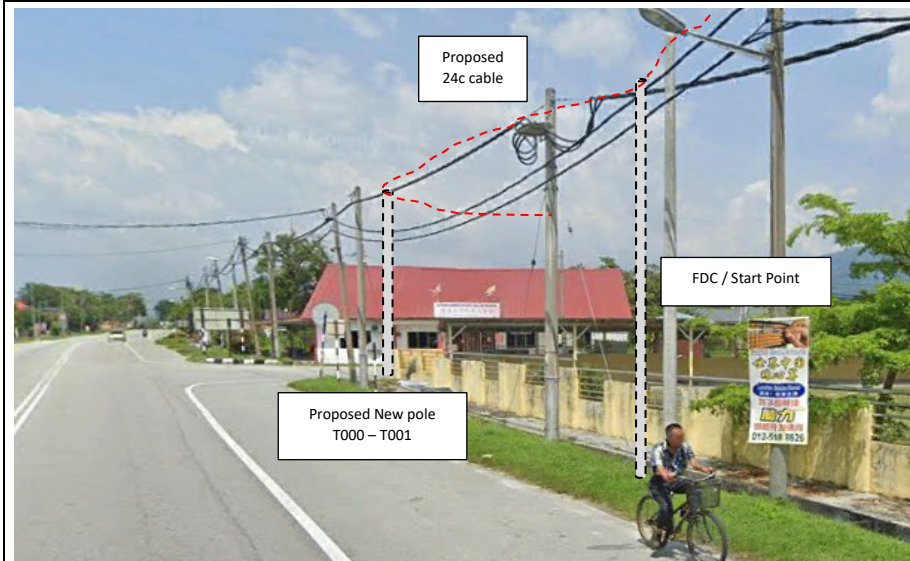


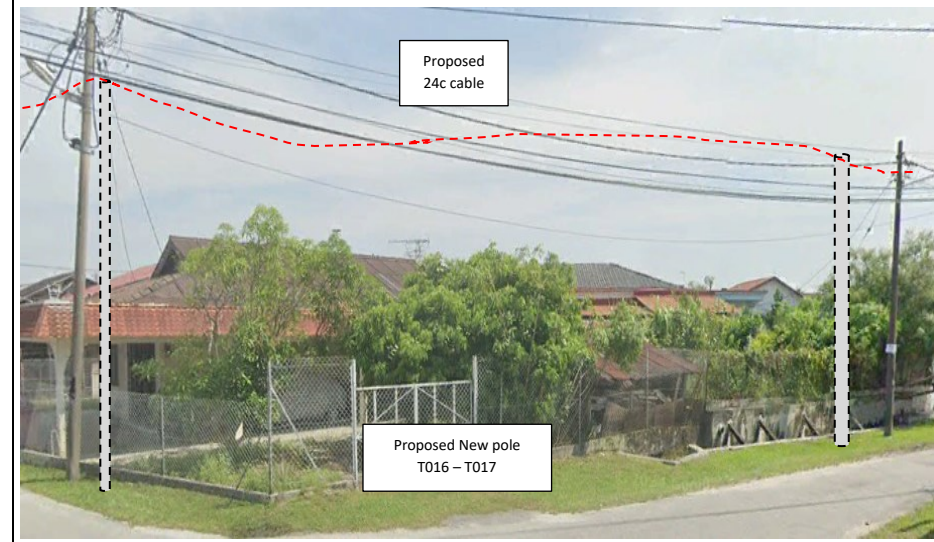
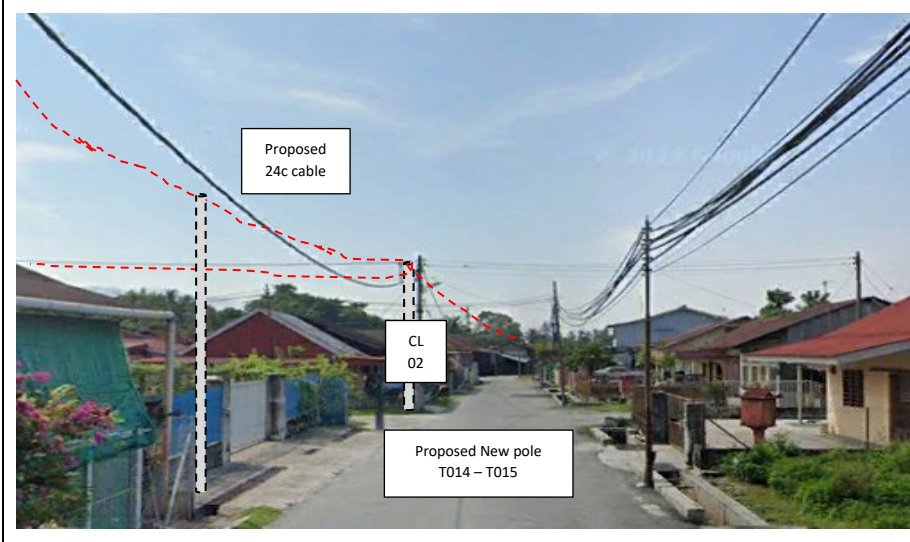
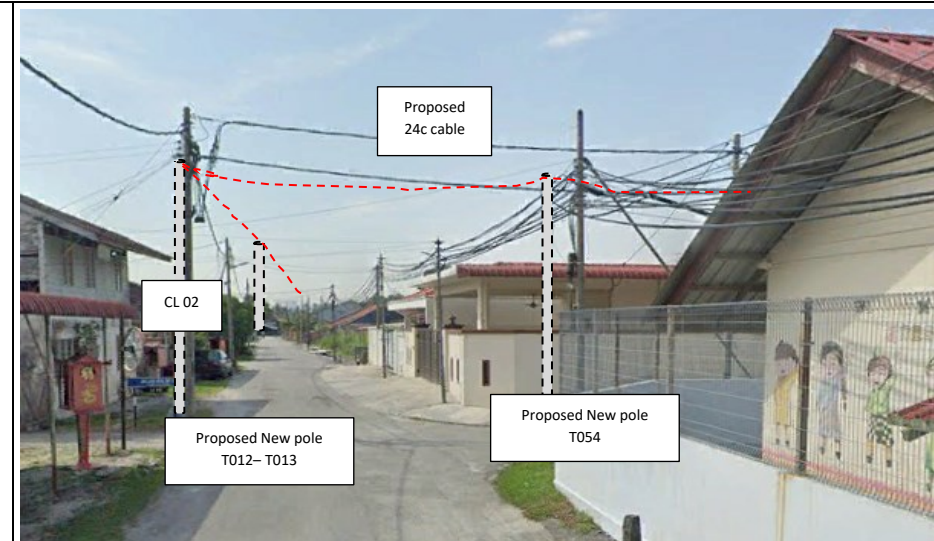
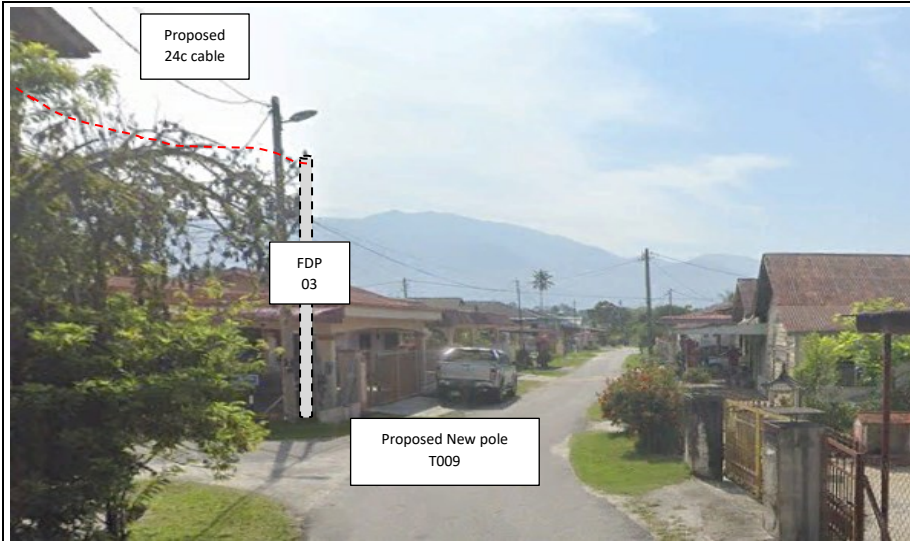
PROJEK PENYEDIAAN DAN PENYELENGGARAAN POINT OF PRESENCE (POP) FASA 2: HAB INFRASTRUKTUR GENTIAN OPTIK BERHAMPIRAN DENGAN SEKOLAH, KAWASAN PERINDUSTRIAN, PREMIS KERAJAAN DAN KOMUNITI SEKITARNYA OLEH KEMENTERIAN KOMUNIKASI MALAYSIA - ZON UTARA (KKMM.400-11/17/132(1))

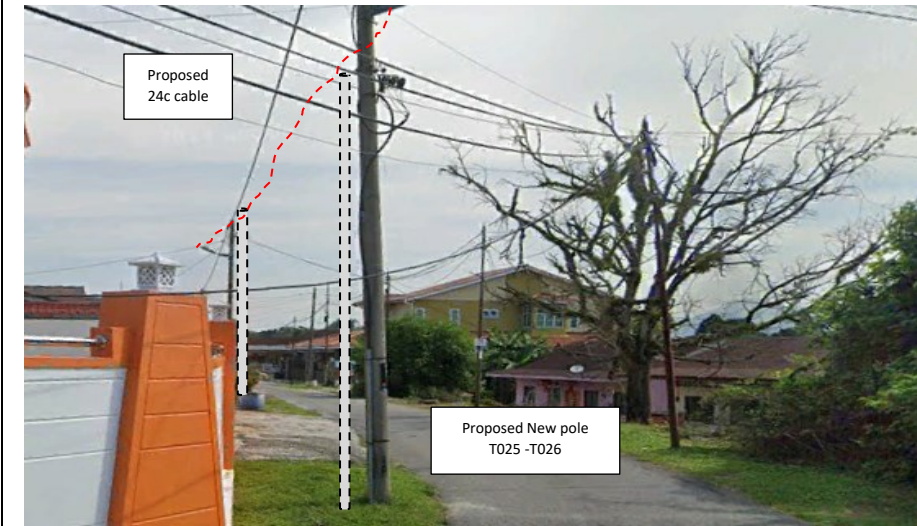
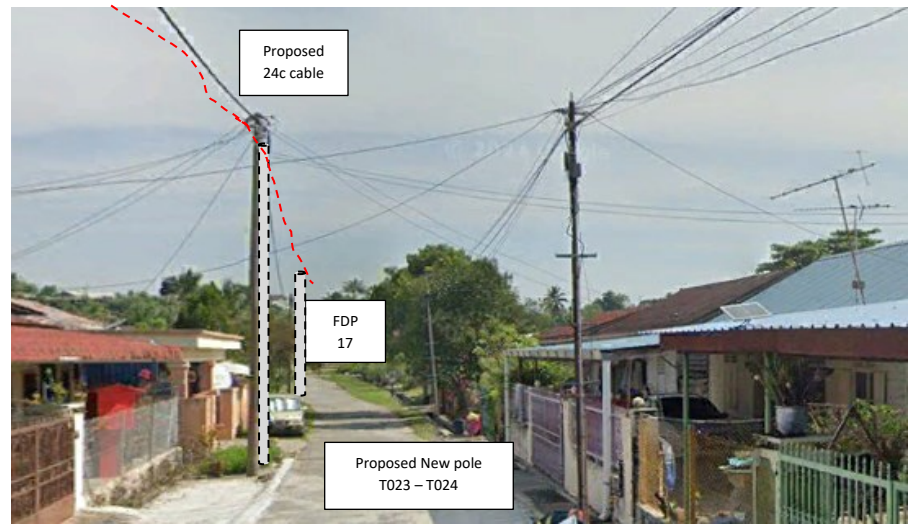
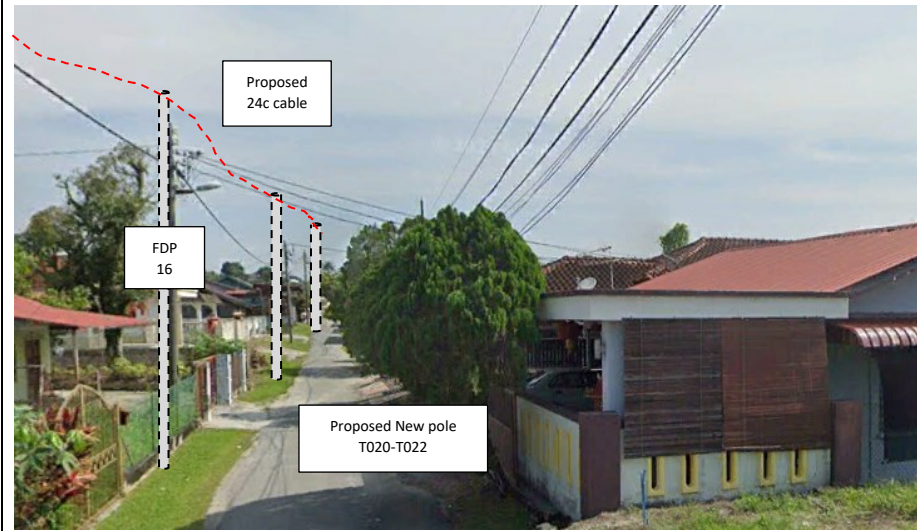
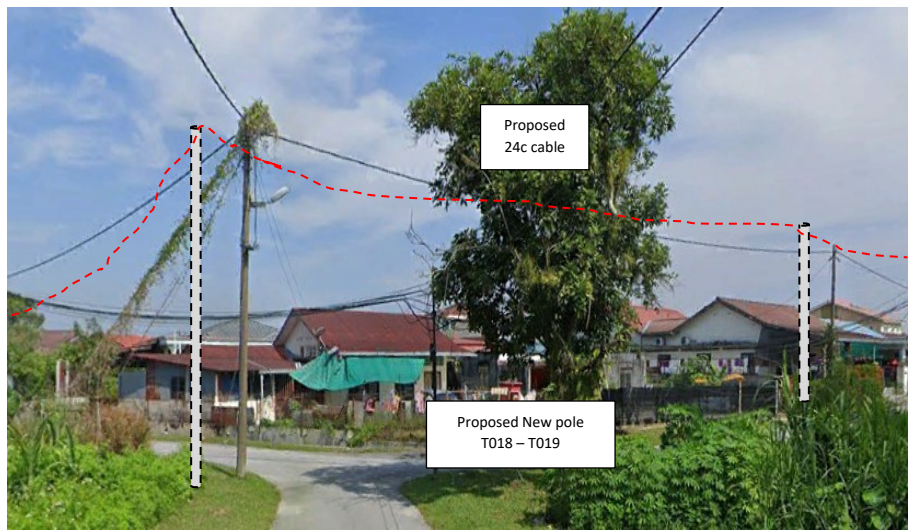


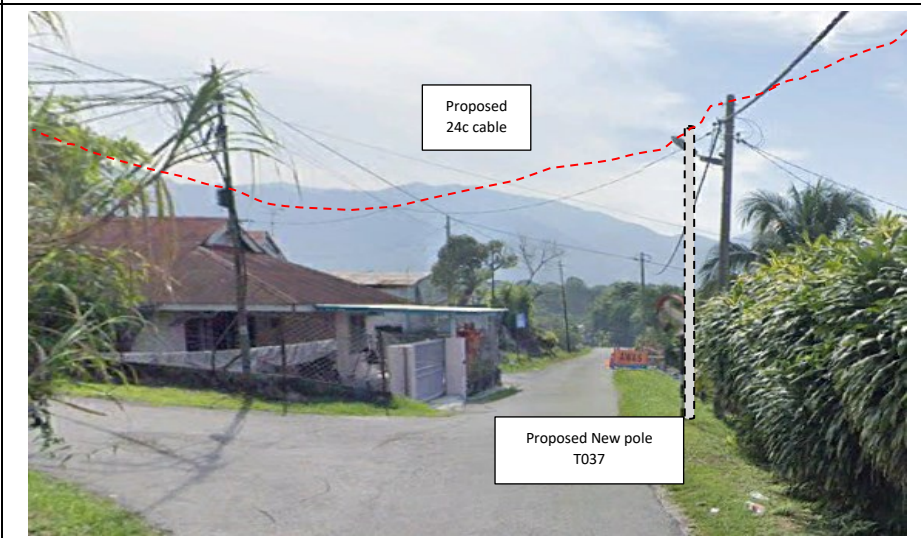
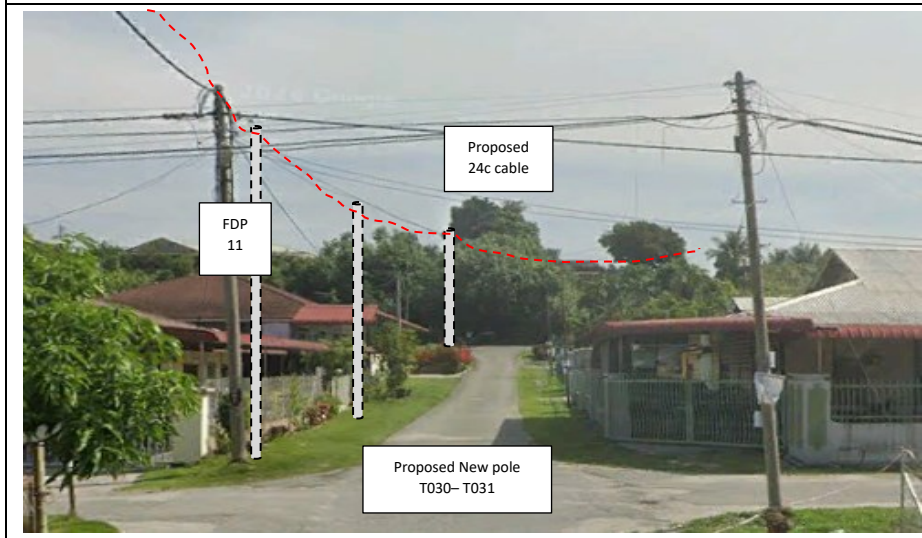
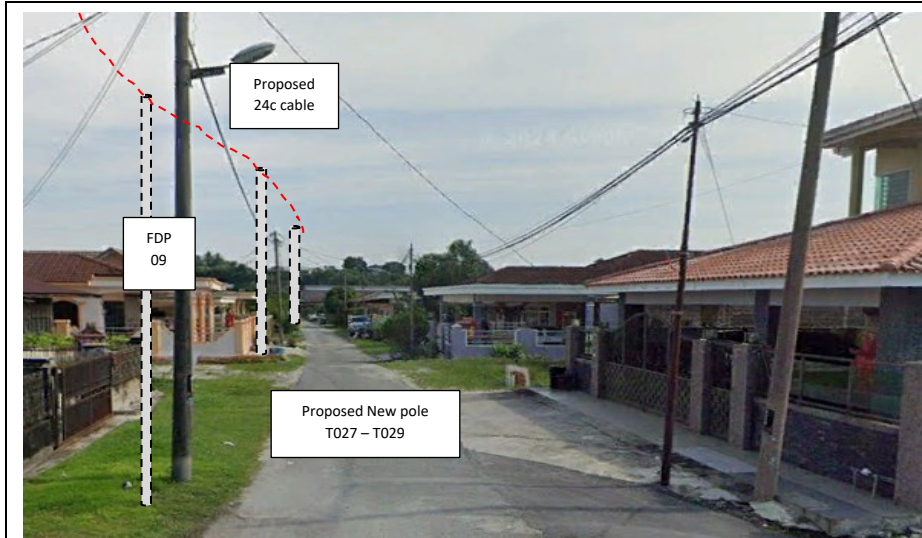
48	T047	43.78	4.352288614	101.1190831	Majlis Perbandaran Kampar
49	T048	39.89	4.352632921	101.1191824	Majlis Perbandaran Kampar
50	T049	43.63	4.353009615	101.1192905	Majlis Perbandaran Kampar
51	T050	20.58	4.353186969	101.1193426	Majlis Perbandaran Kampar
52	T051	173.58	4.35192197	101.118431	Majlis Perbandaran Kampar
53	T052	19.42	4.351796071	101.1183102	Majlis Perbandaran Kampar
54	T053	36.24	4.35165492	101.1180168	Majlis Perbandaran Kampar
55	T054	39.98	4.351330336	101.1181706	Majlis Perbandaran Kampar
56	T055	26.16	4.351124552	101.1182841	Majlis Perbandaran Kampar
57	T056	26.41	4.350910688	101.1183868	Majlis Perbandaran Kampar
58	T057	28.58	4.350709522	101.1185463	Majlis Perbandaran Kampar
59	T058	41.60	4.350355973	101.1186673	Majlis Perbandaran Kampar
60	T059	28.82	4.350118752	101.1187711	Majlis Perbandaran Kampar
61	T060	39.38	4.349815732	101.1189535	Majlis Perbandaran Kampar
62	T061	42.86	4.349457965	101.1190959	Majlis Perbandaran Kampar
63	T062	26.14	4.349224121	101.1191173	Majlis Perbandaran Kampar
64	T063	171.85	4.350523874	101.1182843	Majlis Perbandaran Kampar
65	T064	27.09	4.350445813	101.1180538	Majlis Perbandaran Kampar
66	T065	43.58	4.350080559	101.1181946	Majlis Perbandaran Kampar
67	T066	50.64	4.349671734	101.118394	Majlis Perbandaran Kampar
68	T067	45.14	4.34930639	101.1185701	Majlis Perbandaran Kampar
69	T068	183.32	4.350786604	101.1178484	Majlis Perbandaran Kampar
70	T069	158.80	4.352141923	101.1182935	Majlis Perbandaran Kampar
71	T070	317.19	4.349306	101.118570	Majlis Perbandaran Kampar

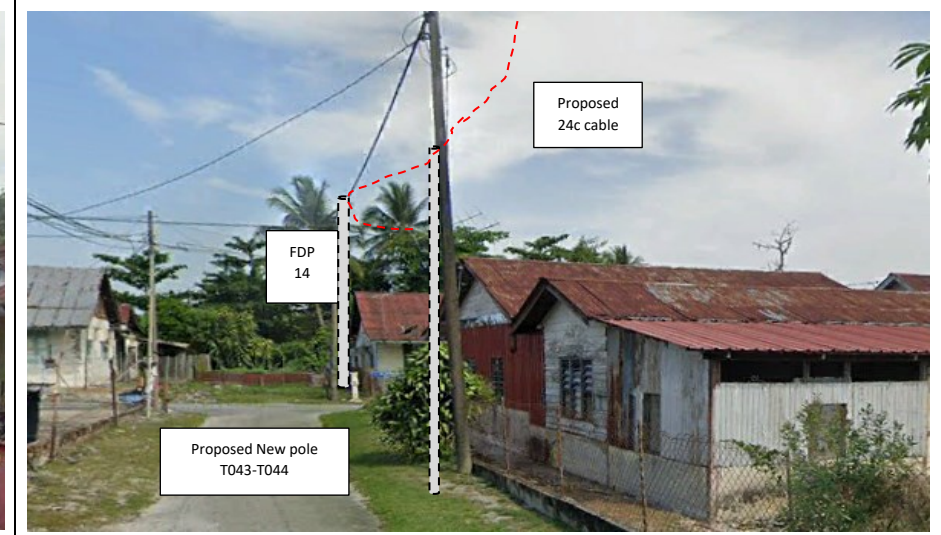
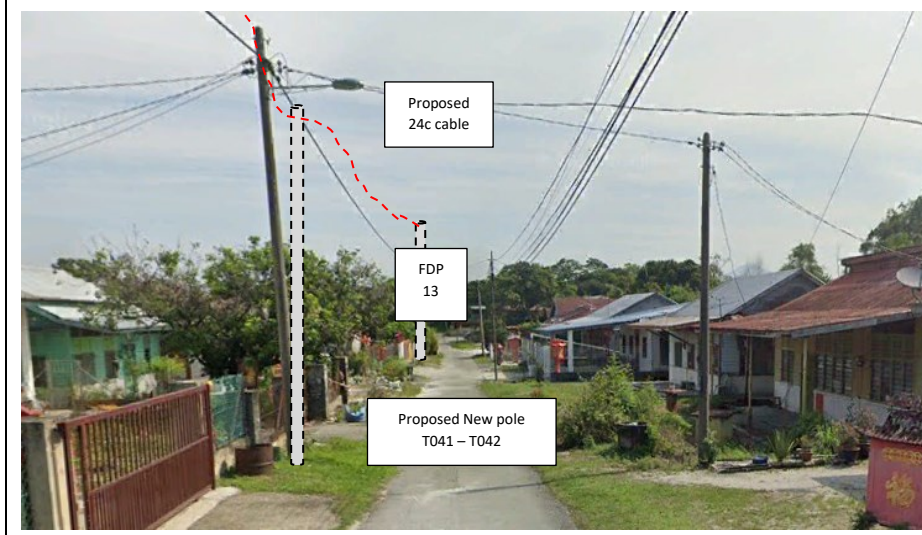
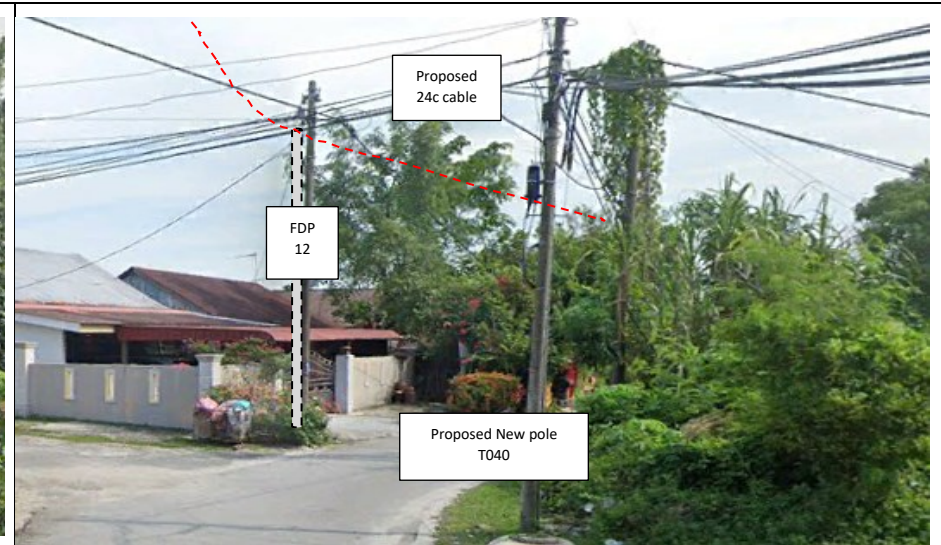
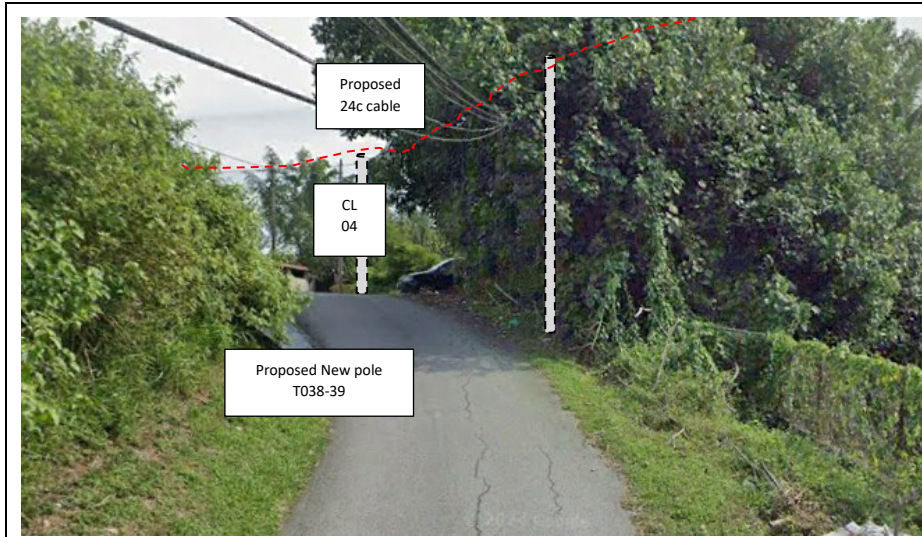
Site Photos – Proposed to install pole

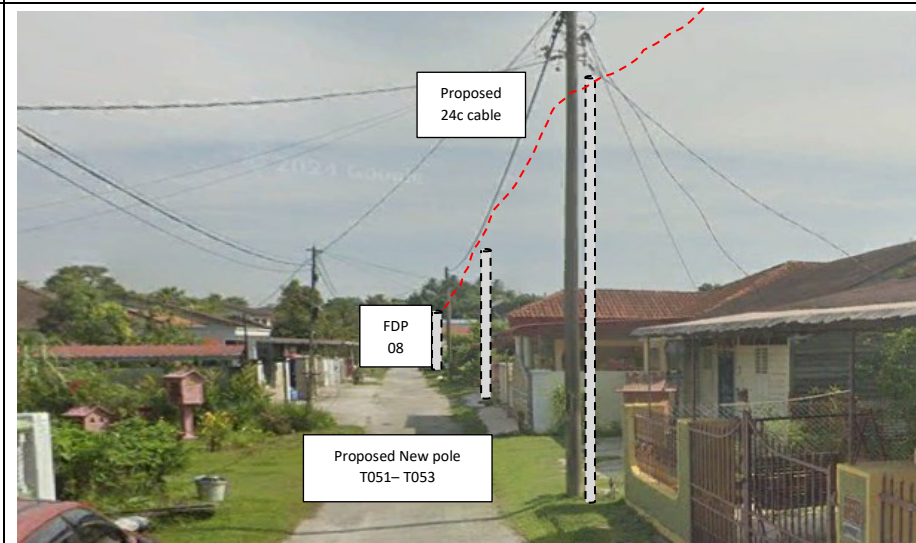
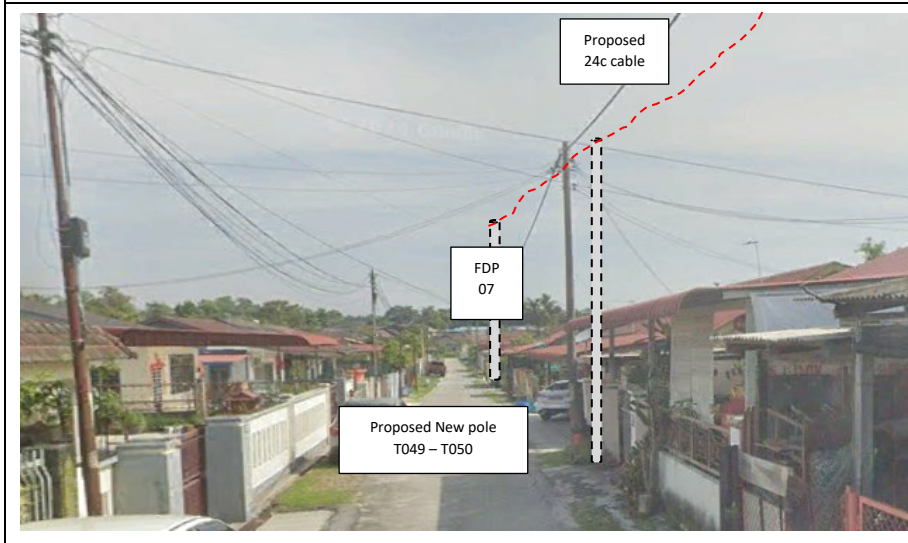
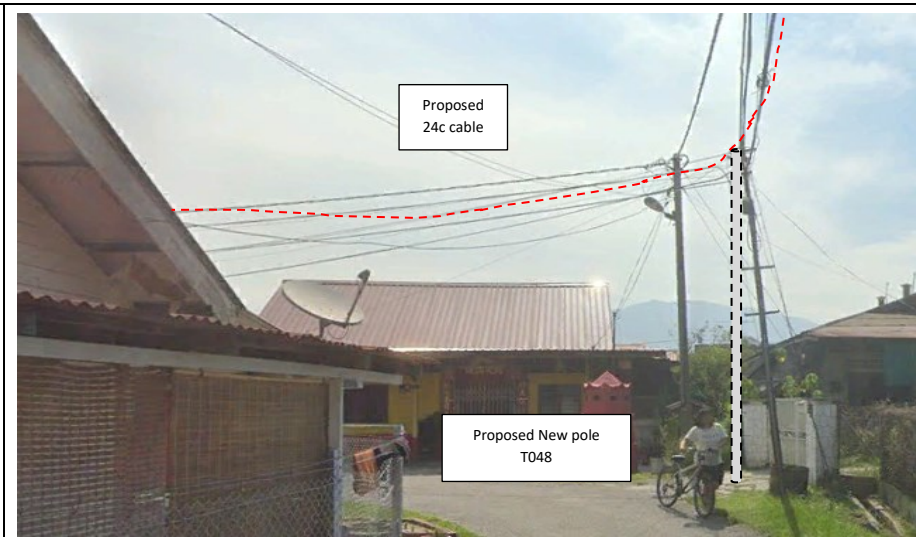


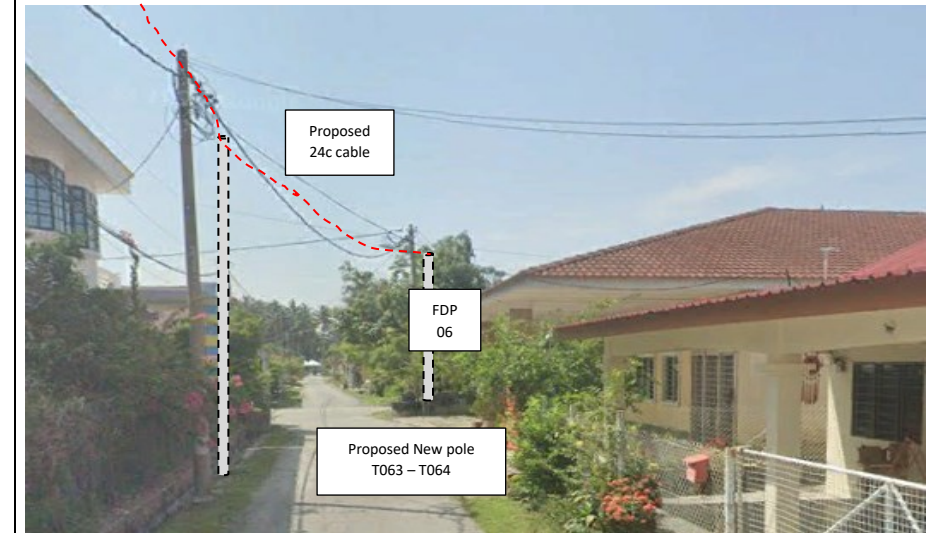
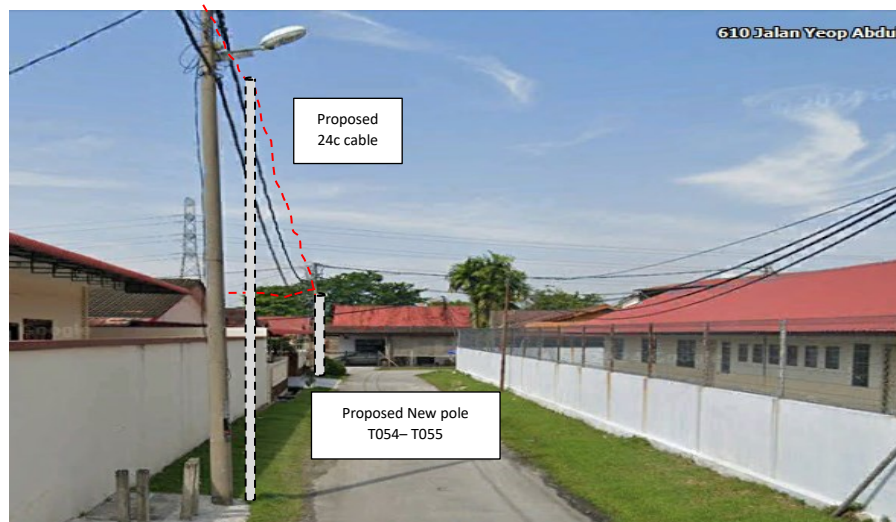


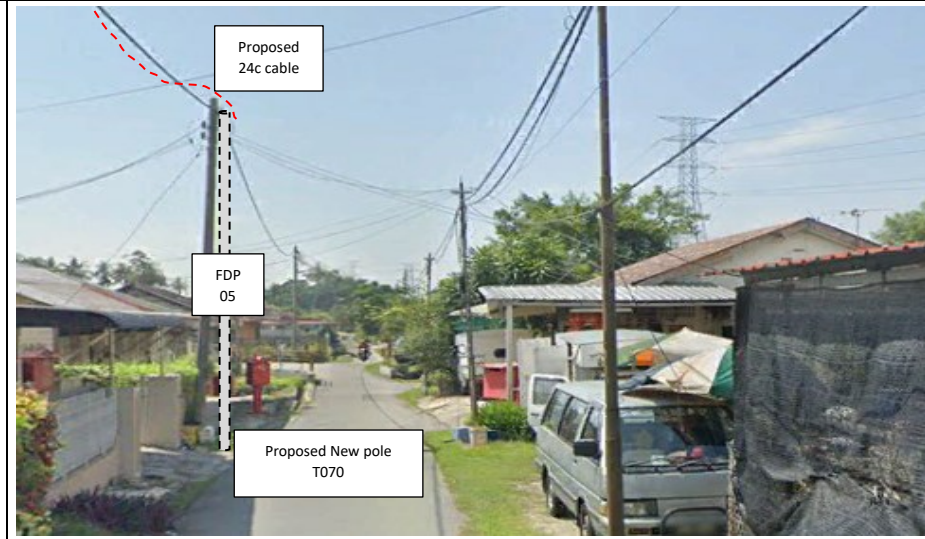
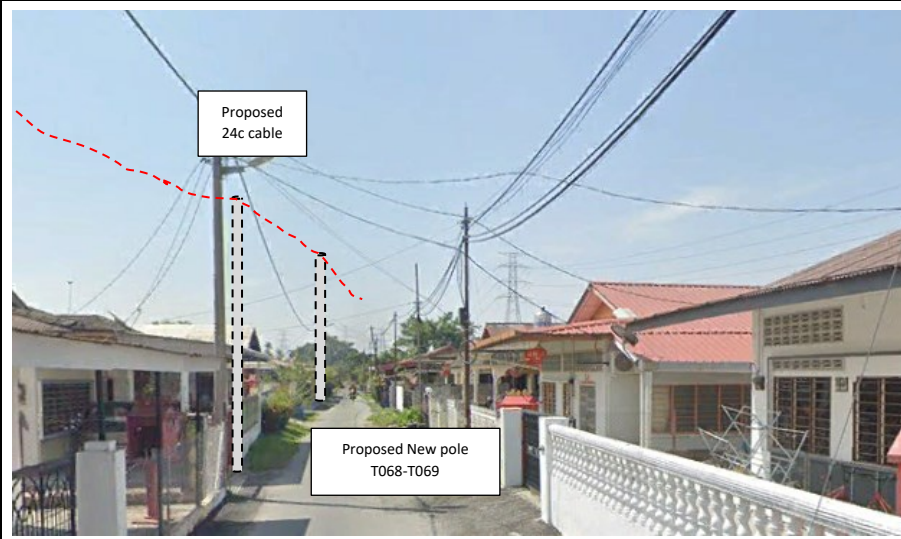
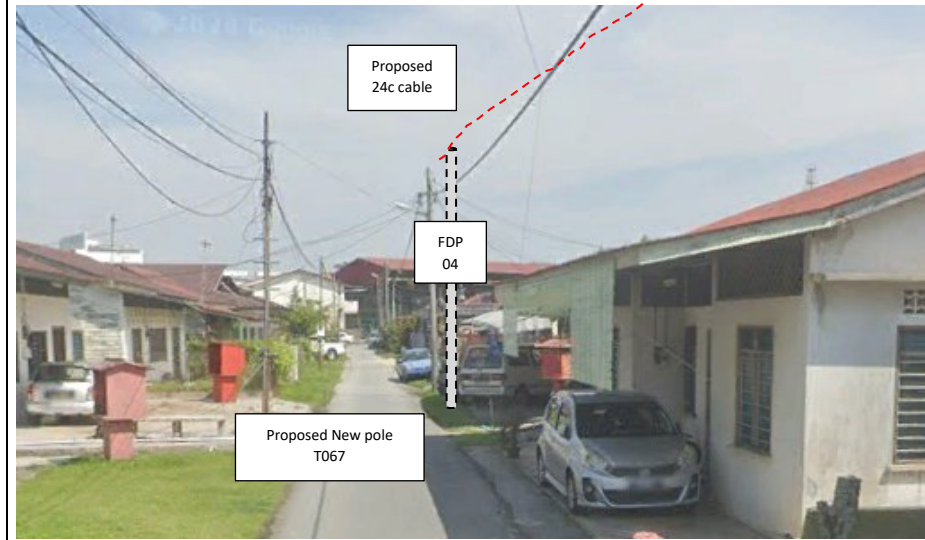
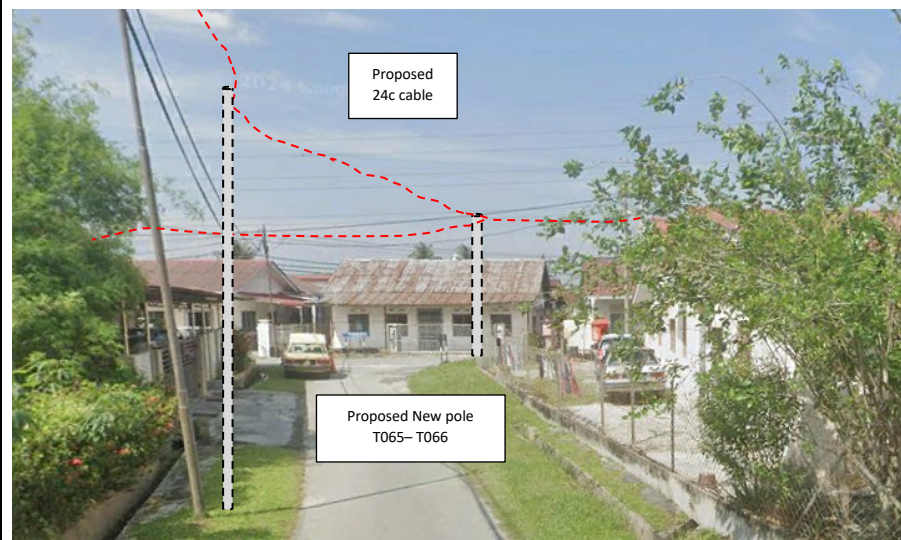












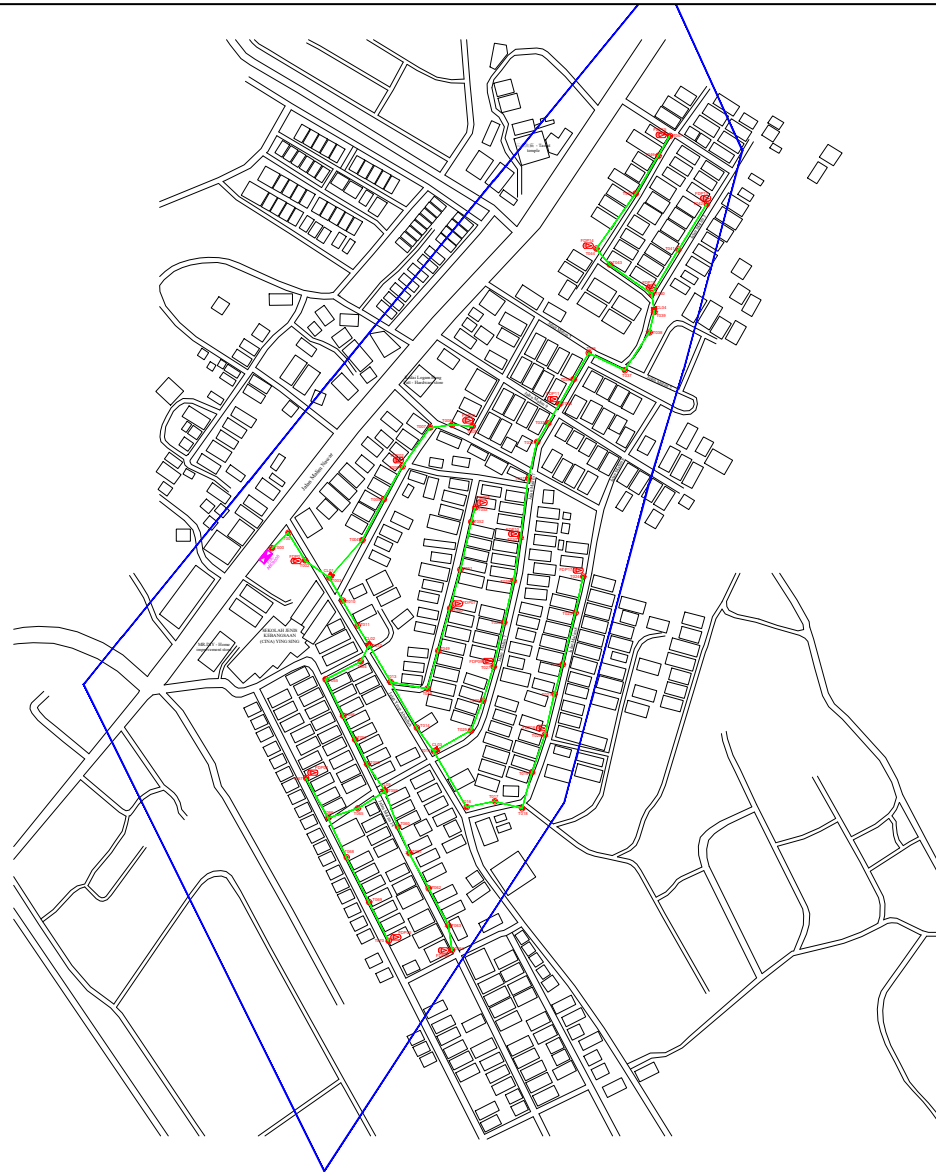


PROJEK PENYEDIAAN DAN PENYELENGGARAAN POINT OF PRESENCE (POP) FASA 2: HAB INFRASTRUKTUR GENTIAN OPTIK BERHAMPIRAN DENGAN SEKOLAH, KAWASAN PERINDUSTRIAN, PREMIS KERAJAAN DAN KOMUNITI SEKITARNYA OLEH KEMENTERIAN KOMUNIKASI MALAYSIA - ZON UTARA (KKMM.400-11/17/132(1))





### 3rd Parties Dependencies

No.	Local Council/ Authority	Remark
1	JKR Kampar	
2	Majlis Perbandaran Kampar	
3		
4		
5		
6		

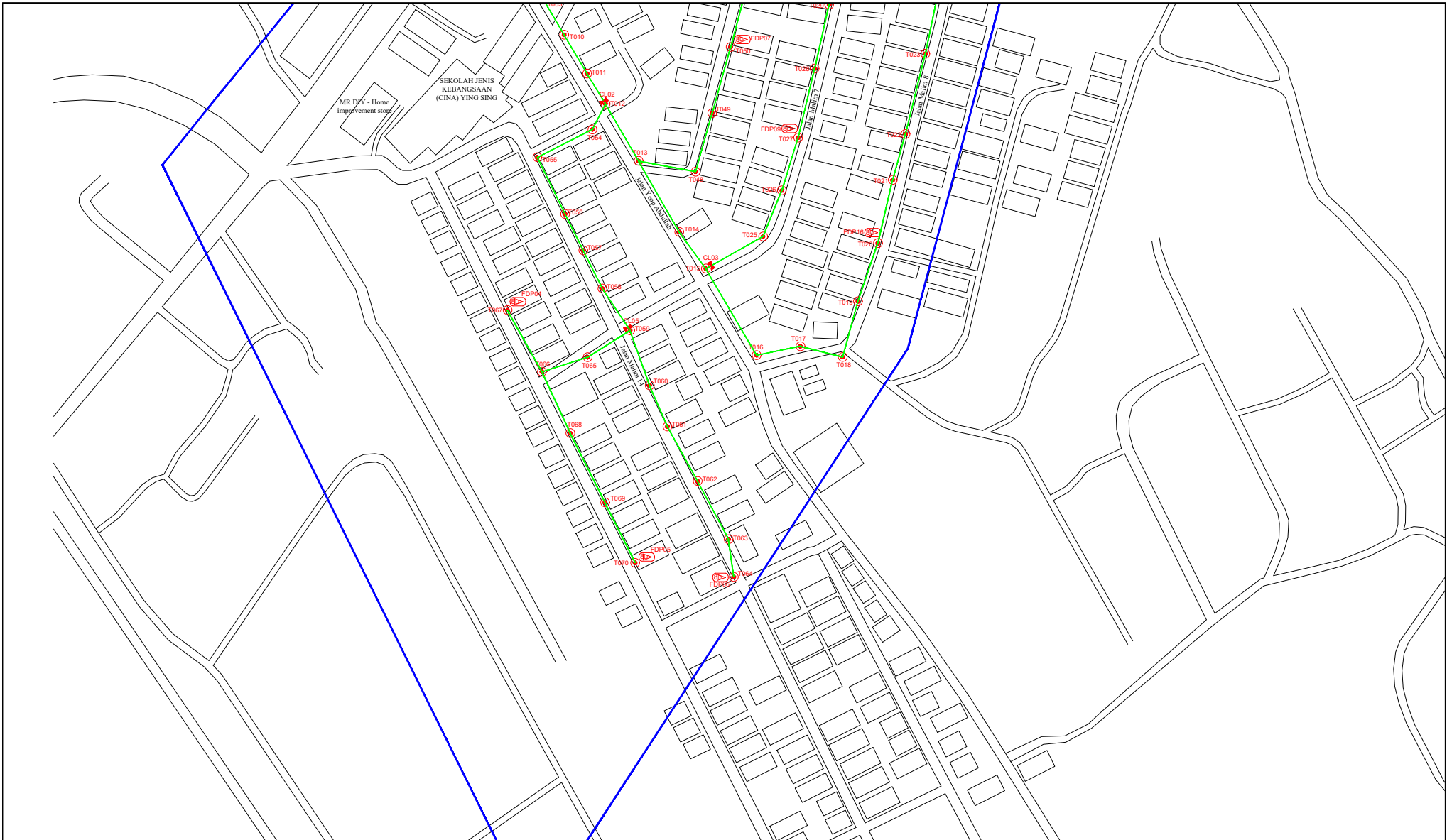


LEGEND	NOS.		NOS.		NOS.		NOS.		NOS.		NOS.		NOS.	
12C FOC		Installed 1:4 / 1:8 / 1:32 splitter		Installed Pole (9m)	5	Suspension		1B30	New Manhole (PIT)		Micro-Trenching (Meter)		MH1	MH NO.
24C FOC	2672	Installed Patch Cord		Installed Pole (7.5M)	70	Tension		1C7	New Manhole(JRC7)		Temporary Infra (Meter)		TKS-1	Existing TNB Pole NO.
48C FOC		FDC	1	Installed Pole (6.7M)		Pole Ring			FDP Boundary		Loop / Coil (Meter)		PO01	New Pole NO.
96C FOC		Closure	5	Existing TNB Pole		FDP with (1:8) splitter	17		HDD (Meter)		#	Active Outdoor Cabinet	CL01	Closure NO.
144C FOC		Existing Closure		Installed Riser		Existing Manhole			Open Cut (Meter)		CO1	FDC NO.	DP1	FDP NO.

ACTUAL HOMEPASS :

<b>KEY PLAN :</b>  POP2 PROJECT IN PERAK	<b>OWNER/DEVELOPOR :</b>   APEX COMMUNICATIONS SDN BHD 12th FLOOR, SEDARA IMP BLDG, 62000 SELANGOR, PERAK KUALA LUMPUR	<b>MAIN CONTRACTOR :</b>   WCWL COMMUNICATIONS SDN BHD 127, JALAN PUTU 3/2, TAMAN PERAK JAYA, BANDAR PUTRA PERAK, 31000 SEREMBAN, SEREMBAN TEL: 400 5080 5083 E-MAIL: info@wcwlcommunications.com.my	<b>PROJECT TITLE :</b>  CONTRACTOR FOR SURVEY, TECHNICAL PROPOSAL AND WAYLEAVE, & PERMIT APPROVAL - POP2 PROJECT	<b>DRAWING TITLE:</b>  CONSTRUCTION DRAWING ABC9005 SEKOLAH JENIS KEBANGSAAN (CINA) YING SING	<b>Design By :</b> AZFAR	<b>Date :</b> NOV 2024
					<b>Drawn By :</b> ATIFAH	<b>Scale :</b> NOT TO SCALE
<b>PROJECT PHASE:</b> POP 2		<b>DRAWING NUMBER :</b> ABC9005-CD-01		<b>Checked By :</b> AZFAR	<b>Job Number :</b> 1	
<b>THIS PRINT AND ITS COPYRIGHT ARE THE PROPERTY OF APEX COMMUNICATIONS SDN BHD</b>				<b>Sheet :</b> 1/3	<b>Size :</b> A3	





LEGEND	NOS.	NOS.	NOS.	NOS.	NOS.	NOS.	NOS.	NOS.	NOS.				
12C FOC		Installed 1:4 / 1:8 / 1:32 splitter		Installed Pole (9m)	S	Suspension		B330	New Manhole (PIT)	Micro-Trenching (Meter)	MH1	MH NO.	
24C FOC	2672	Installed Patch Cord		Installed Pole (7.5M)	T	Tension		C7	New Manhole(JRC7)	Temporary Infra (Meter)	TKS-1	Existing TNB Pole NO.	
48C FOC		FDC	1	Installed Pole (6.7M)		Pole Ring			FDP Boundary	Loop / Coil (Meter)	PO01	New Pole NO.	
96C FOC		Closure	5	Existing TNB Pole		FDP with (1:8) splitter	17		HDD (Meter)	Active Outdoor Cabinet	CL01	Closure NO.	
144C FOC		Existing Closure		Installed Riser		Existing Manhole			Open Cut (Meter)	FDC NO.	DP1	FDP NO.	

ACTUAL HOMEPASS :

<b>KEY PLAN :</b>  POP2 PROJECT IN PERAK	<b>OWNER/DEVELOPOR :</b>   APEX COMMUNICATIONS SDN BHD 12th FLOOR, MENARA HAP BERKAS, 50000 KUALA F. P. WILAYAH, KUALA LUMPUR	<b>MAIN CONTRACTOR :</b>   WCWL COMMUNICATIONS SDN BHD 127, JALAN PUS 3/2, TAMAN PUSKAS JAYA, BANDAR PUTRA PERAI, 08000 SERI BEBERHANG, SELANGOR TEL : 403 5089 5083 E-MAIL : info@wcwlcommunications.com.my	<b>PROJECT TITLE :</b>  CONTRACTOR FOR SURVEY, TECHNICAL PROPOSAL AND WAYLEAVE, & PERMIT APPROVAL - POP2 PROJECT	<b>DRAWING TITLE:</b> CONSTRUCTION DRAWING ABC9005 SEKOLAH JENIS KEBANGSAAN (CINA) YING SING	<b>Design By :</b> AZFAR	<b>Date :</b> NOV 2024
					<b>Drawn By :</b> ATIFAH	<b>Scale :</b> NOT TO SCALE
<b>PROJECT PHASE:</b> POP 2		<b>DRAWING NUMBER :</b> ABC9005-CD-03		<b>Job Number :</b> 1		
<b>THIS PRINT AND ITS COPYRIGHT ARE THE PROPERTY OF APEX COMMUNICATIONS SDN BHD</b>				<b>Sheet :</b> 3/3 <b>Size :</b> A3		