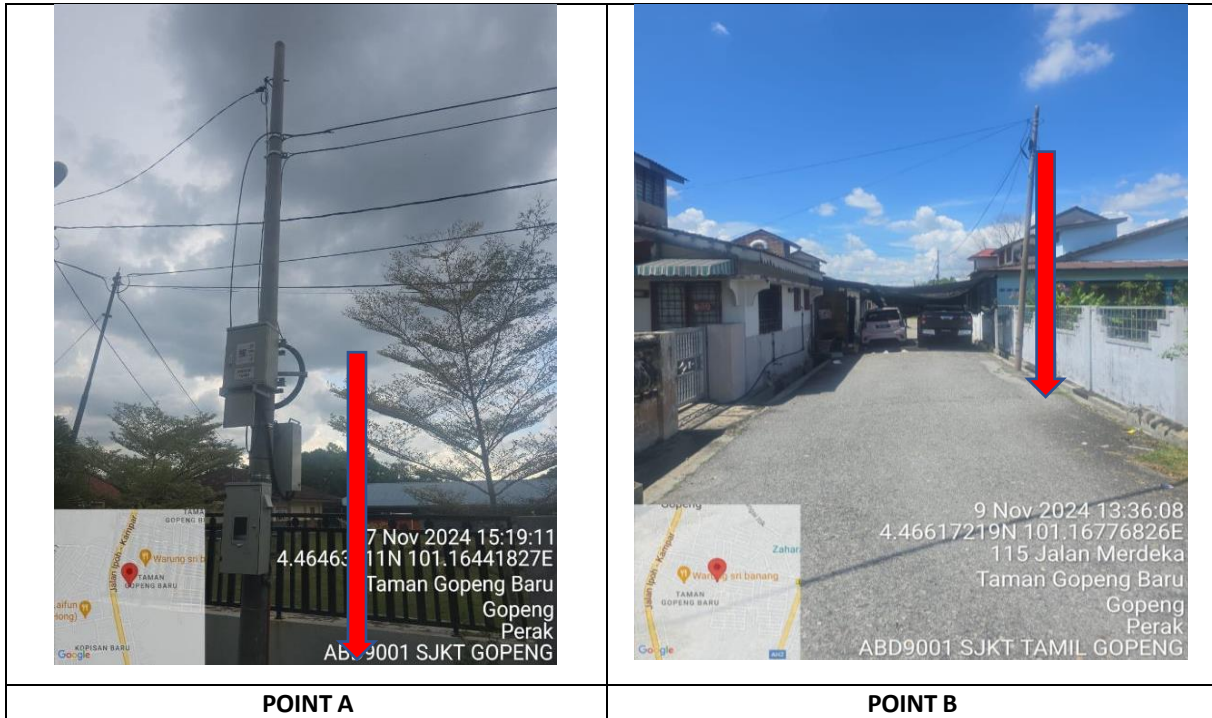


TECHNICAL PROPOSAL

POP2 ABD 9001 SEKOLAH JENIS KEBANGSAAN (TAMIL) GOPENG (D-SIDE)

Company Name :	WCWL Communication Sdn Bhd
Company Address :	No 127 Jalan PUJ 3/3, Taman Puncak Jalil, Bandar Putra Permai 43300 Selangor
Prepared By :	Ramdan
Date :	13 Nov 2024



Starting Point

Site / Boundary Name :	SEKOLAH JENIS KEBANGSAAN (TAMIL) GOPENG
Address :	No. 1, Jalan Kampar
District :	Kampar
Postcode :	31600
State :	Perak
GPS Coordinate :	4.464370, 101.164396
LRD :	A

End Point

Site / Boundary Name :	SEKOLAH JENIS KEBANGSAAN (TAMIL) GOPENG
Address :	Belakang Rumah 229, Jalan Gopeng Baru 9
District :	Kampar
Postcode :	31600
State :	Perak
GPS Coordinate :	4.466453, 101.167391
LRD :	B

Work Summary

No	Proposed Distance and Method	Unit	Qty
1	Horizontal Directional Drilling (HDD)	m	0
2	Carriage Way Open trench (CW)	m	0
3	Grass Verge Open Trenching (GV)	m	0
4	Micro trenching (MT)	m	0
	Total		0

	Other Information	Unit	Qty
1	Proposed Manhole	EA	0
2	Proposed Pole	EA	56
3	Joint Closure	EA	3
4	Estimated time required for completion	days	45

Local Authority Summary

1. Daerah Kampar

Bil	Items	Owner	Quantity	Distance
1	HDD	JKR	-	-
		Majlis	-	-
		Estate / Private Land	-	-
2	New Pole	JKR	-	-
		Majlis	56	2500m
		Estate / Private Land	-	-
3	Existing TNB Pole	JKR	-	-
		Majlis	-	-
		Estate / Private Land	-	-
Total				2500m

Site Plan – KMZ (Overview site area)

Proposed Cable and New Pole



Site Plan – KMZ Routing (All Local Authority)



Route Blue Colour – Majlis Daerah Kampar

Prop New Pole Lat & Long Table

PROPOSED POLE COORDINATE		
POLE NUMBER	LATITUDE	LONGITUDE
T 001	4.46437	101.164396
T 002	4.464853	101.164489
T 003	4.465091	101.164471
T 004	4.465229	101.164434
T 005	4.465657	101.164541
T 006	4.466054	101.164701
T 007	4.466257	101.16469
T 008	4.466193	101.164948
T 009	4.466107	101.165205
T 010	4.465899	101.165456
T 011	4.465706	101.165767
T 012	4.465404	101.166245
T 013	4.465163	101.166564
T 014	4.464946	101.166921
T 015	4.464756	101.167316
T 016	4.464603	101.167546
T 017	4.465277	101.1665
T 018	4.464501	101.167533
T 019	4.464247	101.167572
T 020	4.464196	101.168031
T 021	4.464183	101.168477
T 022	4.464221	101.168758
T 023	4.464183	101.169064
T 024	4.464145	101.169447
T 025	4.464234	101.169626
T 026	4.463802	101.169587
T 027	4.463557	101.169549
T 028	4.463618	101.16923
T 029	4.463653	101.168675
T 030	4.463685	101.168417
T 031	4.463738	101.168074
T 032	4.463728	101.167688
T 033	4.463728	101.167688
T 034	4.46315	101.169566
T 035	4.463182	101.169383
T 036	4.463192	101.168997
T 037	4.463182	101.168718
T 038	4.463214	101.168428
T 039	4.463235	101.168074
T 040	4.463225	101.167549
T 041	4.464851	101.167548
T 042	4.465118	101.167553
T 043	4.465188	101.167312
T 044	4.465305	101.167129
T 045	4.46537	101.167044
T 046	4.465541	101.16677
T 047	4.465407	101.167591

PROPOSED POLE COORDINATE		
POLE NUMBER	LATITUDE	LONGITUDE
T 048	4.46568	101.167666
T 049	4.465755	101.167457
T 050	4.465883	101.167247
T 051	4.465995	101.16706
T 052	4.466156	101.167757
T 053	4.466396	101.167505
T 054	4.466273	101.167736
T 055	4.466086	101.16772
T 056	4.466453	101.167391

Overall Manhole & Pole (Propose New & Existing)

No.	Pole & Manhole ID	Distance	Latitude	Longitude	Local Authority
1	T 001	0	4.46437	101.164396	Majlis Daerah Kampar
2	T 002	54	4.464853	101.164489	Majlis Daerah Kampar
3	T 003	26	4.465091	101.164471	Majlis Daerah Kampar
4	T 004	35	4.465229	101.164434	Majlis Daerah Kampar
5	T 005	40	4.465657	101.164541	Majlis Daerah Kampar
6	T 006	40	4.466054	101.164701	Majlis Daerah Kampar
7	T 007	30	4.466257	101.16469	Majlis Daerah Kampar
8	T 008	15	4.466193	101.164948	Majlis Daerah Kampar
9	T 009	40	4.466107	101.165205	Majlis Daerah Kampar
10	T 010	38	4.465899	101.165456	Majlis Daerah Kampar
11	T 011	40	4.465706	101.165767	Majlis Daerah Kampar
12	T 012	60	4.465404	101.166245	Majlis Daerah Kampar
13	T 013	52	4.465163	101.166564	Majlis Daerah Kampar
14	T 014	30	4.464946	101.166921	Majlis Daerah Kampar
15	T 015	42	4.464756	101.167316	Majlis Daerah Kampar
16	T 016	40	4.464603	101.167546	Majlis Daerah Kampar
17	T 017	30	4.465277	101.1665	Majlis Daerah Kampar
18	T 018	30	4.464501	101.167533	Majlis Daerah Kampar
19	T 019	30	4.464247	101.167572	Majlis Daerah Kampar
20	T 020	42	4.464196	101.168031	Majlis Daerah Kampar
21	T 021	30	4.464183	101.168477	Majlis Daerah Kampar
22	T 022	30	4.464221	101.168758	Majlis Daerah Kampar
23	T 023	28	4.464183	101.169064	Majlis Daerah Kampar
24	T 024	40	4.464145	101.169447	Majlis Daerah Kampar
25	T 025	40	4.464234	101.169626	Majlis Daerah Kampar
26	T 026	30	4.463802	101.169587	Majlis Daerah Kampar
27	T 027	30	4.463557	101.169549	Majlis Daerah Kampar
28	T 028	40	4.463618	101.16923	Majlis Daerah Kampar
29	T 029	40	4.463653	101.168675	Majlis Daerah Kampar
30	T 030	30	4.463685	101.168417	Majlis Daerah Kampar
31	T 031	30	4.463738	101.168074	Majlis Daerah Kampar
32	T 032	20	4.463728	101.167688	Majlis Daerah Kampar
33	T 033	25	4.463728	101.167688	Majlis Daerah Kampar
34	T 034	30	4.46315	101.169566	Majlis Daerah Kampar
35	T 035	24	4.463182	101.169383	Majlis Daerah Kampar
36	T 036	40	4.463192	101.168997	Majlis Daerah Kampar
37	T 037	40	4.463182	101.168718	Majlis Daerah Kampar
38	T 038	30	4.463214	101.168428	Majlis Daerah Kampar
39	T 039	40	4.463235	101.168074	Majlis Daerah Kampar
40	T 040	43	4.463225	101.167549	Majlis Daerah Kampar
41	T 041	40	4.464851	101.167548	Majlis Daerah Kampar
42	T 042	38	4.465118	101.167553	Majlis Daerah Kampar
43	T 043	33	4.465188	101.167312	Majlis Daerah Kampar
44	T 044	25	4.465305	101.167129	Majlis Daerah Kampar
45	T 045	33	4.46537	101.167044	Majlis Daerah Kampar
46	T 046	36	4.465541	101.16677	Majlis Daerah Kampar
47	T 047	24	4.465407	101.167591	Majlis Daerah Kampar
48	T 048	36	4.46568	101.167666	Majlis Daerah Kampar

No.	Pole & Manhole ID	Distance	Latitude	Longitude	Local Authority
49	T 049	40	4.465755	101.167457	Majlis Daerah Kampar
50	T 050	40	4.465883	101.167247	Majlis Daerah Kampar
51	T 051	30	4.465995	101.16706	Majlis Daerah Kampar
52	T 052	36	4.466156	101.167757	Majlis Daerah Kampar
53	T 053	30	4.466396	101.167505	Majlis Daerah Kampar
54	T 054	36	4.466273	101.167736	Majlis Daerah Kampar
55	T 055	25	4.466086	101.16772	Majlis Daerah Kampar
56	T 056	40	4.466453	101.167391	Majlis Daerah Kampar

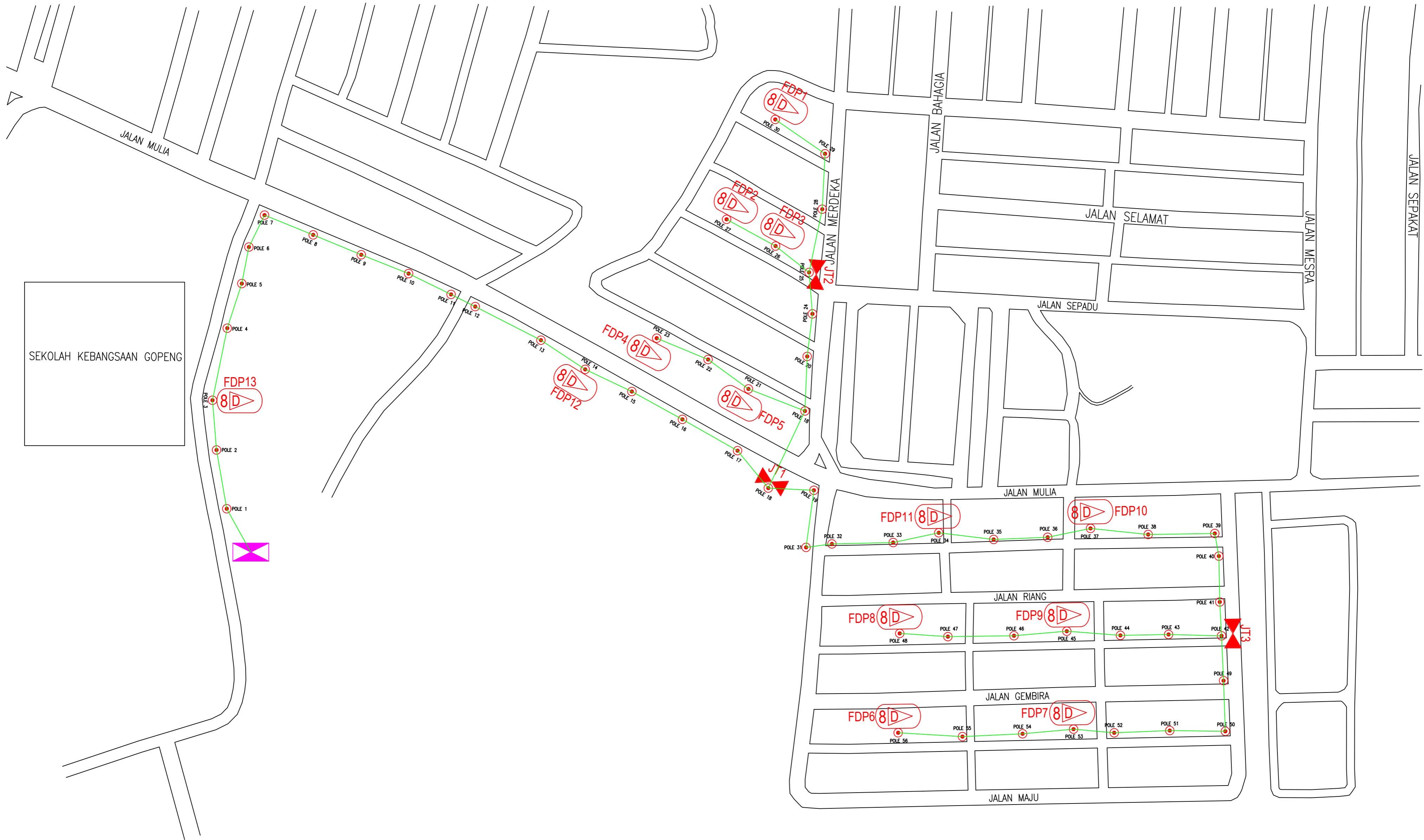
Site Photos – Proposed Pole 7.5m



Site Photos – Proposed Pole 7.5m



DRAWING SJKT GOPENG



LEGEND	NOS.	NOS.	NOS.	NOS.	NOS.	NOS.	NOS.
	12C FOC		Installed Pole (9m)		New Manhole(JRC7)		TS / TB Tension Small / Tension Big
	24C FOC		Installed Riser		House Number		Existing Manhole
	48C FOC		Closure		Existing TNB Pole		Closure NO.
	96C FOC		New Manhole (PIT)		LOOP		FDP NO.
	144C FOC		Installed Pole (7.5M)		FDC		FDC NO.

KEY PLAN :

PROJECT OWNER :



APEX COMMUNICATION SDN BHD
12th Floor, Menara Hap Seng,
50250 Jalan P. Ramlee,
Kuala Lumpur

MAIN CONTRACTOR



WCWL COMMUNICATION SDN BHD
127 Jln PUJ 3/3, Taman Puncak Jalil,
Bandar Putra Permai, 43300,
Seri Kembangan, Selangor

SUB-CONTRACTOR :

PROJECT TITLE:
CONTRACTOR FOR SURVEY, TECHNICAL PROPOSAL AND
WAYLEAVE & PERMIT APPROVAL - POP2 PROJECT

DRAWING TITLE:
AS-BUILD SITE PLAN DRAWING
ABB9001
SEKOLAH JENIS KEBANGSAAN (TAMIL)
GOPENG
PROJECT PHASE:
POP 2

Design By : ASYRAF	Date : DATE
Drawn By : ASYRAF	Scale : 1:100
Checked By : ASYRAF	Job Number : JOB_NUMBER
DRAWING NUMBER : ABB9001-CD-01	Sheet : 1/1
THIS PRINT AND ITS COPYRIGHT ARE THE PROPERTY OF ALLO TECHNOLOGY SDN BHD	
Size : XX	