



# Technical Proposal for TM Project



<b>Project Description:</b>	USP MC2021 FTTH (TM) KAMPUNG BATU 8 BEH RANG HULU ( JLN SLIM )
<b>Project Number:</b>	TMKA/250104
<b>TM Node</b>	TM
<b>Region</b>	NORTHERN , PERAK
<b>SITE ID</b>	USP2400205
<b>RFSI Date</b>	26 JUN 2025
<b>GPS Coordinate</b>	3.788861 , 101.497453

<b>Prepared by:</b>	NURUL HUSNA BT ROKIB @ ZAHIR
<b>Company Name:</b>	KAZAKON SDN BHD
<b>Date:</b>	17 MARCH 2025
<b>TP Revision:</b>	1

## Contents

### 1.0 FDC information

- 1.1 FDC Boundary ✓
- 1.2 FDC Details and Illustration ✓

### 2.0 FDP information

- 2.1 FDP and FOSC Location ✓
- 2.2 FDP Boundary ✓
- 2.3 Cable Plan ✓
- 2.4 Spur Information
- 2.5 FDP details ✓
- 2.6 Tie FDP details ✓

### 3.0 New Pole information

- 3.1 Pole plan ✓
- 3.2 Pole details ✓
- 3.3 Illustration ✓

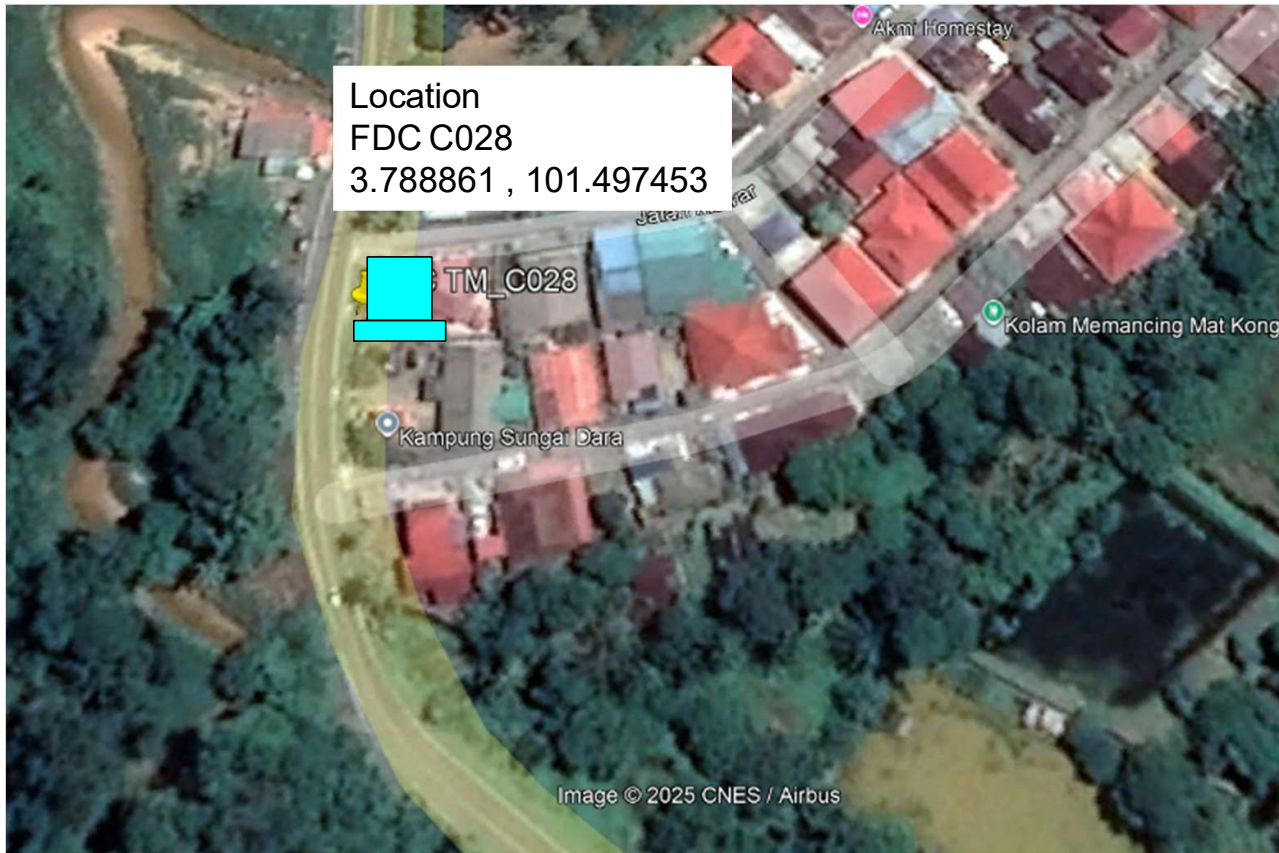
### 4.0 Material Specification

- 4.1 Fiber Accessories - FDC/Mini FDC/FDP/ODF
- 4.2 Civil Accessories – Manhole/Pole

### 5.0 Costing & BOQ

- 5.1 Project BOQ ✓
- 5.2 Costing

## 1.1 FDC Location & Boundary

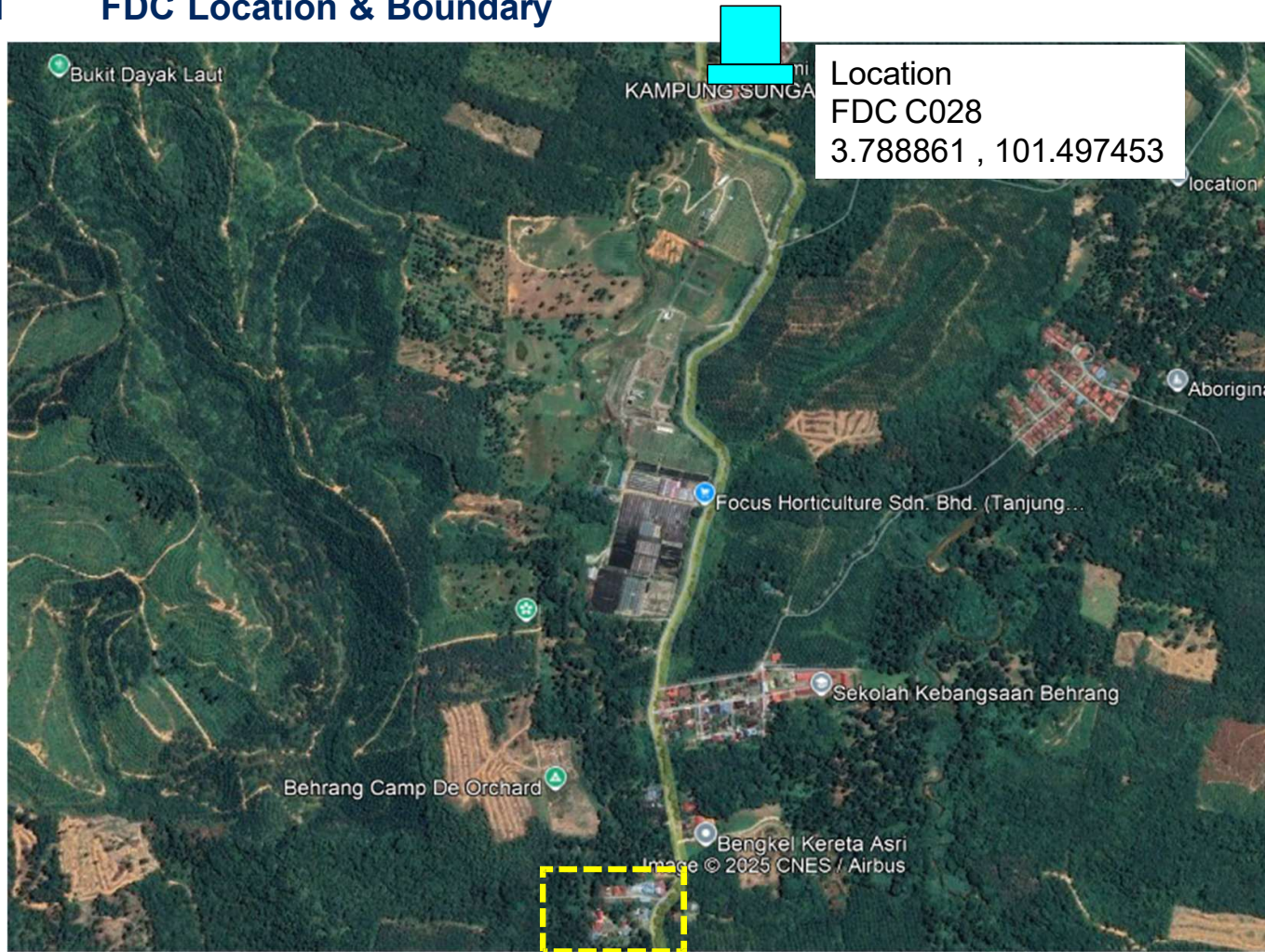


Legend:



FDC Location

## 1.1 FDC Location & Boundary



Legend:



FDC Location

## 1.1 FDC Location & Boundary



Legend:



FDC Location

## 1.2 Details and Illustration

No	Info	Road/Location	Type	Lat/Long
1	EXISTING FDC	JLN TG MALIM – SLIM RIVER	NORMAL	3.788861 , 101.497453

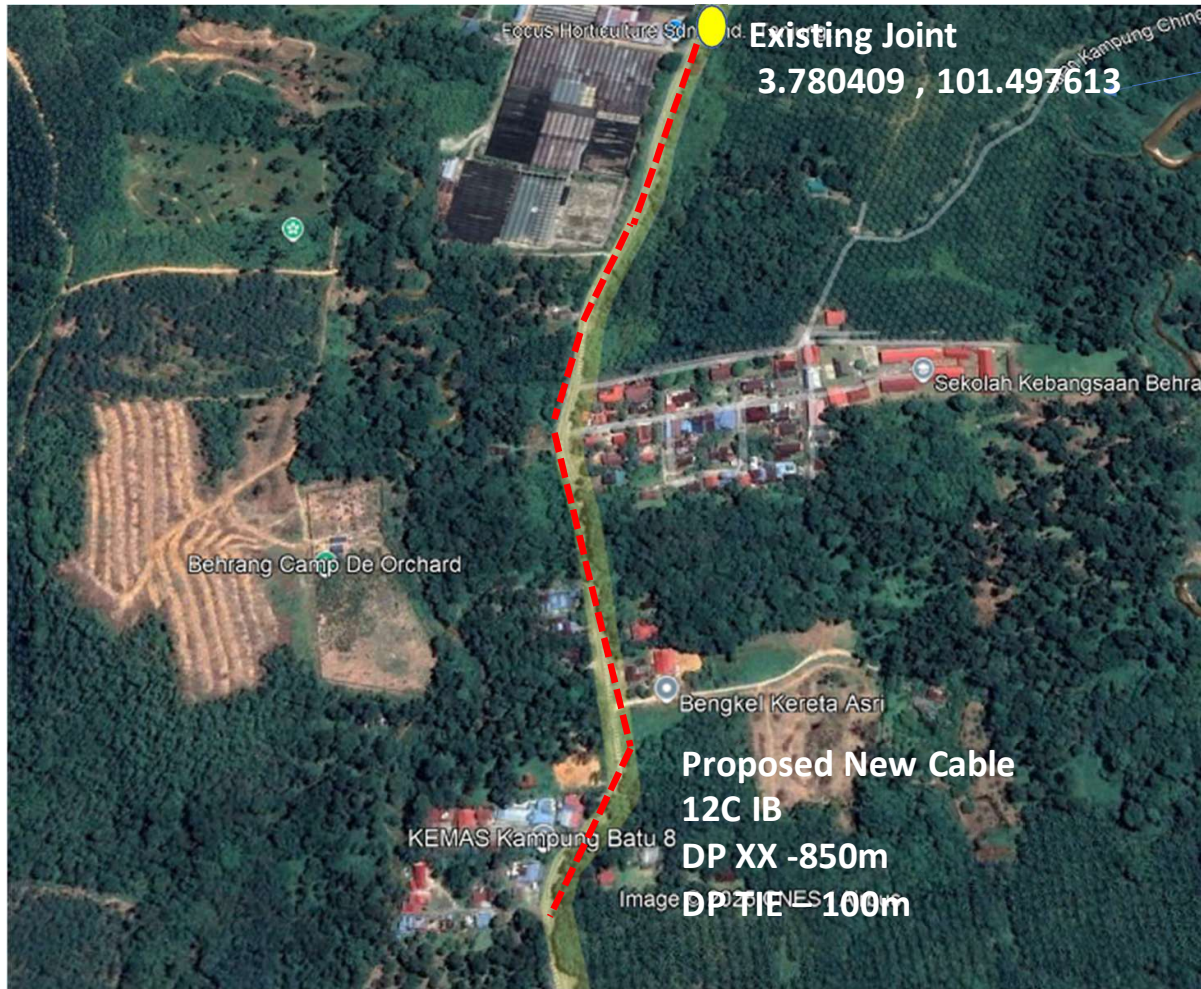
### FDC Location



Legend:

Location

## 2.1 FDP and FOSC Location



Legend:



FDC Cabinet



Existing Joint

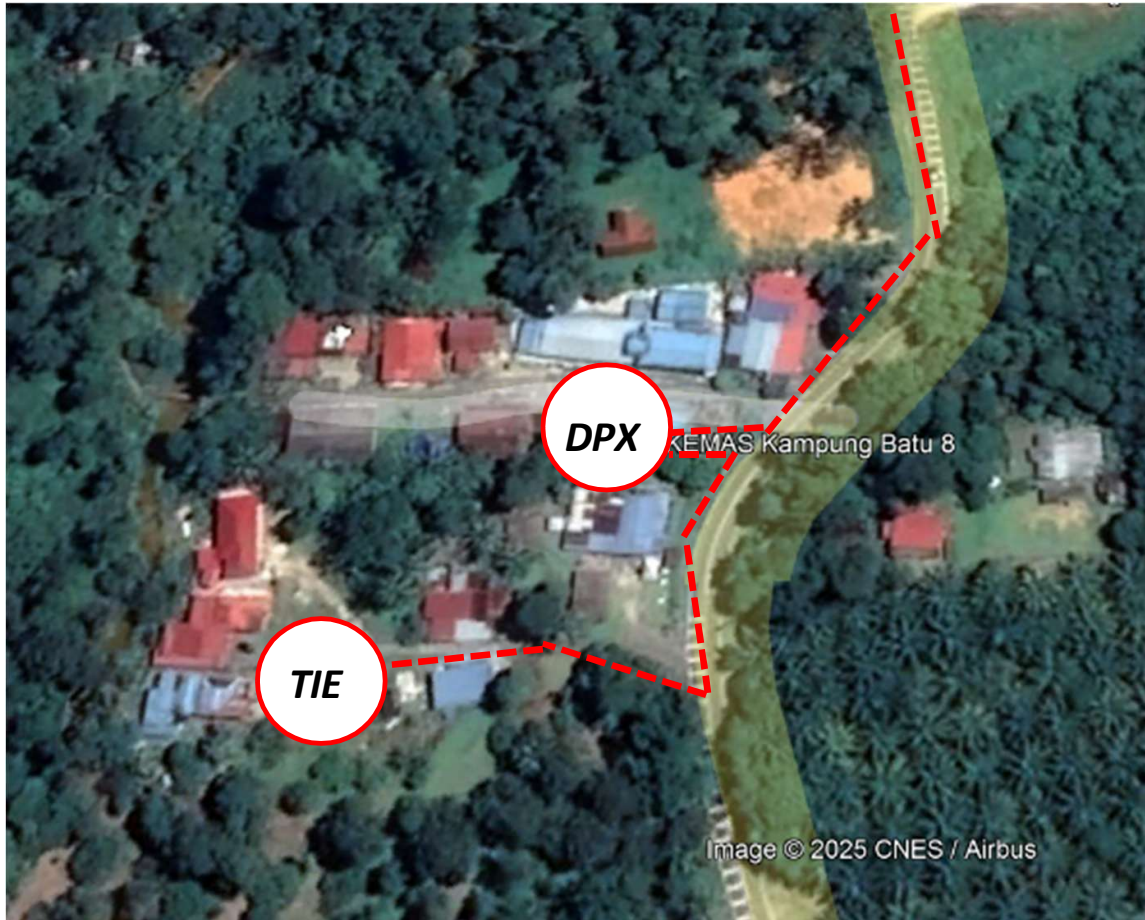


New Joint



POLE

## 2.1 FDP and FOSC Location



Legend:



FDC Cabinet



Existing Joint

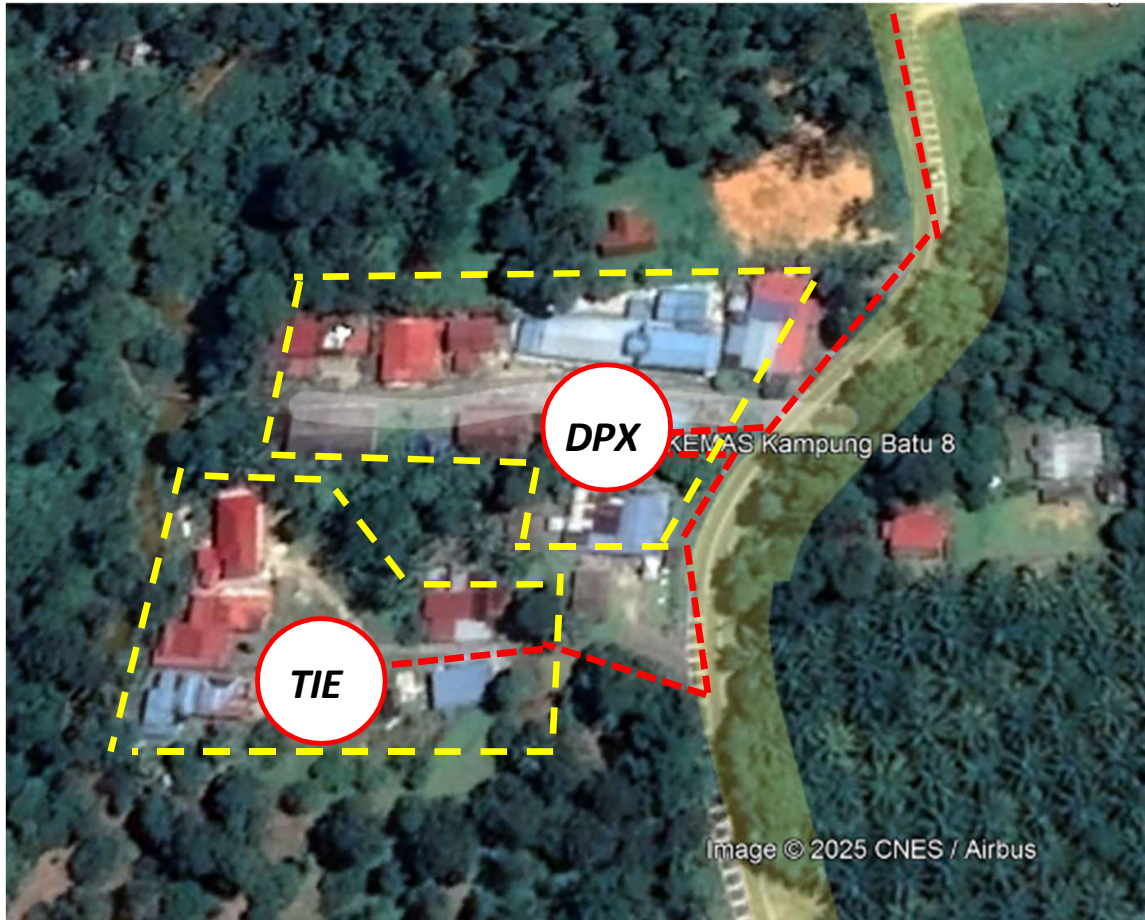


New Joint



POLE

## 2.2 FDP Boundary



Legend:



FDC Cabinet



Existing Joint

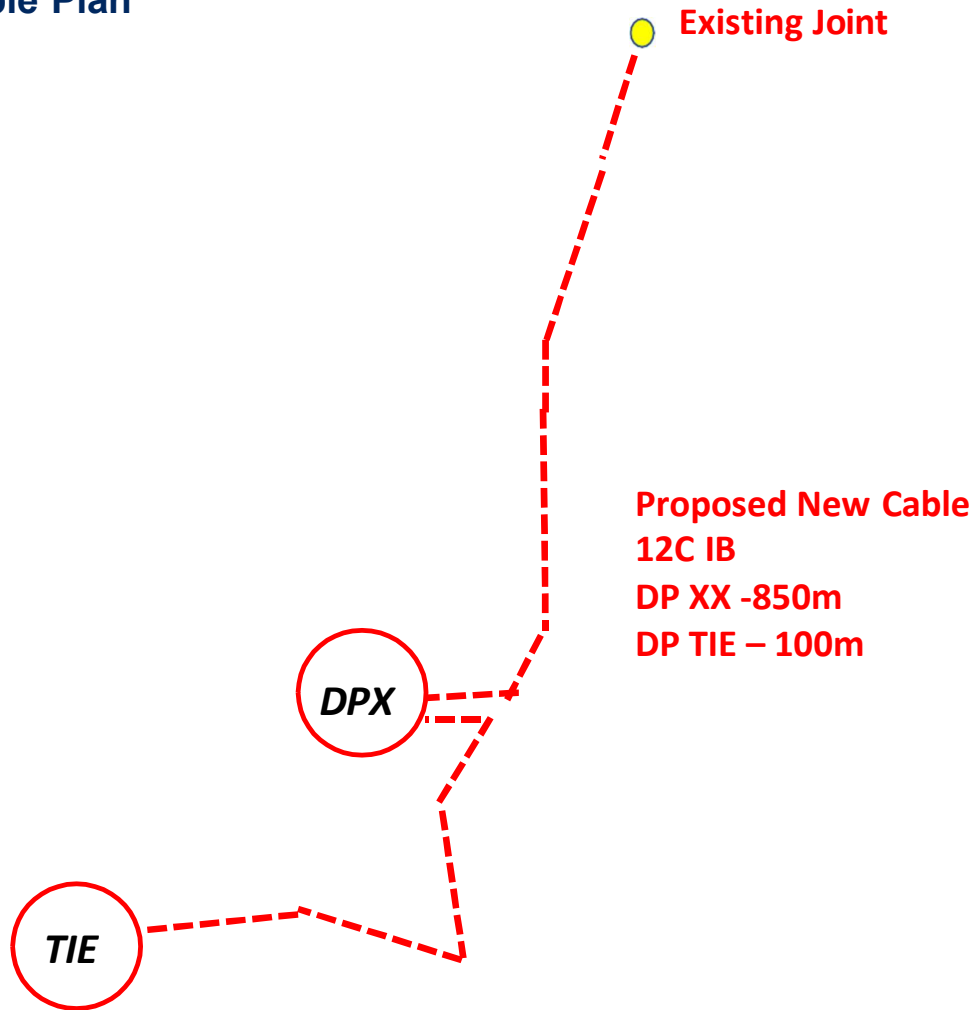


New Joint



POLE

## 2.3 Cable Plan



Legend:



5G Cabinet



Existing Joint



New Joint



POLE

## 2.5 FDP Details – Normal Project

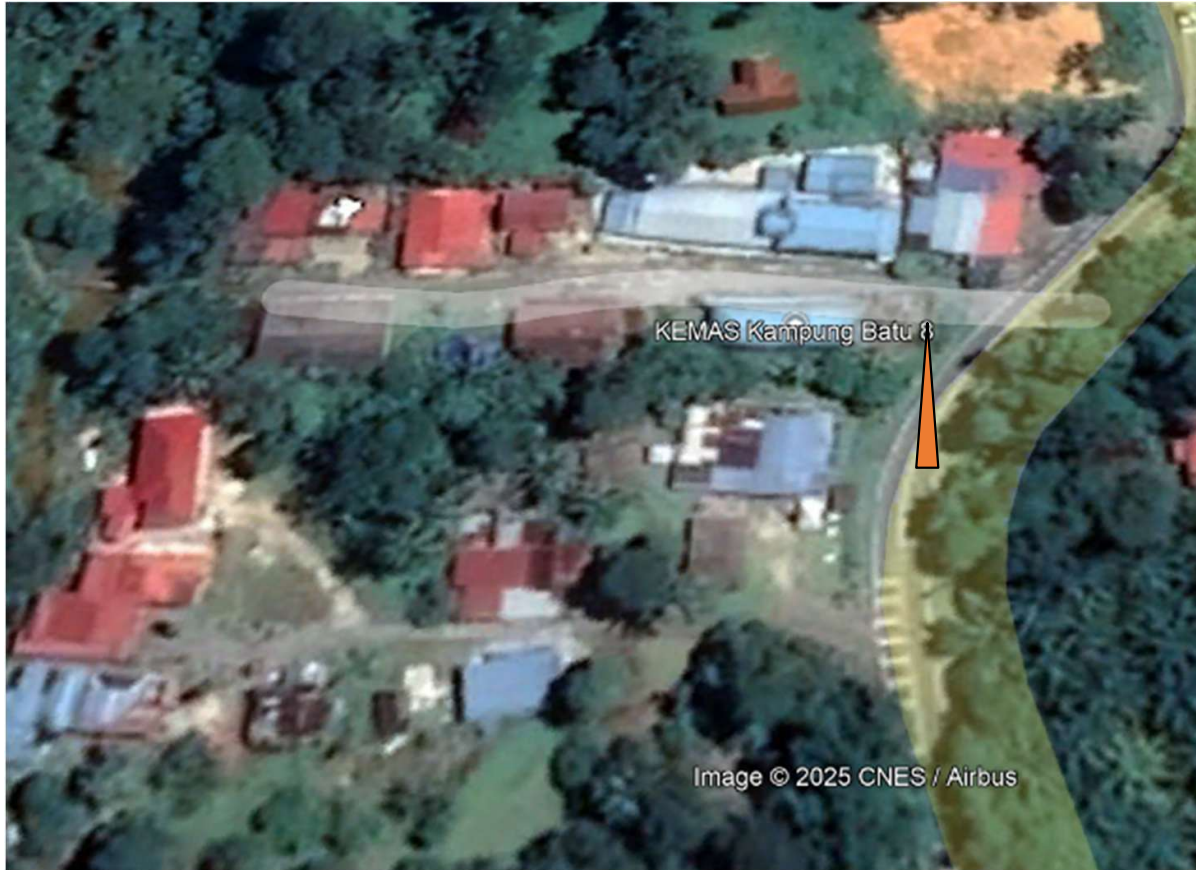
No	Info	DP Type	Road/Location	Ports	Properties Covered	Guide
1	DP00X	POLE	BERDEKATAN KEMAS Kampung Batu 8	8	8	

## 2.6 Tie FDP details

No	Info	DP Type	Road/Location	Ports	Properties Covered	Guide
1	DP TIE	POLE	RUMAH Kampung Batu 8	1	8	

### 3.0 New Pole information

#### 3.1 Pole Plans



Legend:



Cabinet



Existing Joint



New Joint



POLE

### 3.2 New Pole details

No	POLE ID	Pole Type	GPS Coordinate
1	1	Concrete Pole 7.5m	3.774008 , 101.496896

### 3.3 1 New Pole Illustration



New pole -1





