

TECHNICAL PROPOSAL

POP2 ABA3014 SEKOLAH KEBANGSAAN TELUK MEDAN (D-SIDE)

Company Name	: SEGALA DELIMA (M) SDN BHD
Company Address	: No. 8, Jalan Ampang Baru 6B, Pusat Perdagangan Baru, 31350 Ipoh, Perak
Prepared By	: Mohamad Helmi
Date	: 30/12/2024



Starting Point

Site / Boundary Name	: Sekolah Kebangsaan Teluk Medan
District	: Bagan Serai
Postcode	: 34300
State	: Perak
GPS Coordinate	: 4.987589024 100.5758661
LRD	: A

End Point

Site / Boundary Name	: Sekolah Kebangsaan Teluk Medan
Address	: Jalan Taiping, Teluk Medan
District	: Bagan Serai
Postcode	: 34300
State	: Perak
GPS Coordinate	: 4.984644 100.583148
LRD	: B

1.0 WORK SUMMARY

NO	PROPOSED DISTANCE AND METHOD	UNIT	QUANTITY
1	Horizontal Directional Drilling (HDD)	m	0
2	Carriage Way Open Trench(CW)	m	0
3	Grass Verge Open Trenching (GV)	m	0
4	Micro Trenching (MT)	m	0
Total			0

NO	OTHER INFORMATION	UNIT	QUANTITY
1	Installation of Short Span ADSS Fiber Cables	m	2735
2	Install New Pole	ea	76
3	Install New JRC7 Manhole	ea	0
4	Install GI Riser 100mm	ea	0
5	Install Fiber Distribution Point and Closure (Splicing, Termination and Testing)	ea	15
6	Estimated Time Required for Completion	days	60

2.0 LOCAL AUTHORITY SUMMARY

Daerah Kerian

NO	ITEMS	Owner	Quantity	Distance (m)
1	HDD	JKR	-	-
		Majlis	-	-
		Estate / Private Land	-	-
2	New Pole	JKR	17	769
		Majlis	59	1966
		Estate / Private Land	-	-
Total Distance (m)				2735

3.0 SITE PLAN (KMZ)

3.1 Overview Site Area (Propose New Pole)



3.2 Proposed FDP and Closure



3.3 Site Plan - KMZ Routing (All Local Authority)



Red Colour - JKR

Road Blue Colour - Majlis Road

3.0 PROPOSED NEW MANHOLE

Proposed New Manhole Coordinate					
No.	Manhole Number	Distance (m)	Latitude	Longitude	Local Authority
1	MH01	-	-	-	-
2	MH02	-	-	-	-

4.0 PROPOSED NEW POLE

Proposed New Pole Coordinate					
No.	Pole Number	Distance (m)	Latitude	Longitude	Local Authority
1	T001	39m	4.987881	100.575593	JKR Daerah Kerian
2	T002	35m	4.988011	100.575295	JKR Daerah Kerian
3	T003	35m	4.988132	100.575036	JKR Daerah Kerian
4	T004	35m	4.988296	100.574747	JKR Daerah Kerian
5	T005	35m	4.988448	100.574458	JKR Daerah Kerian
6	T006	35m	4.988615	100.574182	JKR Daerah Kerian
7	T007	35m	4.988767	100.573870	JKR Daerah Kerian
8	T008	35m	4.988931	100.573573	JKR Daerah Kerian
9	T009	35m	4.989084	100.573293	JKR Daerah Kerian
10	T010	35m	4.989245	100.573026	JKR Daerah Kerian
11	T011	35m	4.989389	100.572787	JKR Daerah Kerian
12	T012	35m	4.989552	100.572504	JKR Daerah Kerian
13	T013	35m	4.989683	100.572256	JKR Daerah Kerian
14	T014	35m	4.989835	100.571969	JKR Daerah Kerian
15	T015	35m	4.989987	100.571715	JKR Daerah Kerian
16	T016	15m	4.990137	100.571443	JKR Daerah Kerian
17	T017	26m	4.990088	100.571276	Majlis Daerah Kerian
18	T018	35m	4.990150	100.571077	Majlis Daerah Kerian
19	T019	35m	4.989835	100.570880	Majlis Daerah Kerian
20	T020	35m	4.989508	100.570704	Majlis Daerah Kerian
21	T021	30m	4.989187	100.570562	Majlis Daerah Kerian
22	T022	15m	4.988970	100.570443	Majlis Daerah Kerian
23	T023	35m	4.988627	100.570280	Majlis Daerah Kerian
24	T024	35m	4.988306	100.570111	Majlis Daerah Kerian
25	T025	35m	4.988030	100.569957	Majlis Daerah Kerian
26	TP26	35m	4.987728	100.569793	Majlis Daerah Kerian
27	T027	35m	4.987459	100.569634	Majlis Daerah Kerian
28	T028	35m	4.987261	100.569542	Majlis Daerah Kerian
29	T029	35m	4.988975	100.570540	Majlis Daerah Kerian
30	T030	15m	4.988839	100.570780	Majlis Daerah Kerian
31	T031	35m	4.988752	100.570801	Majlis Daerah Kerian
32	T032	35m	4.988444	100.570639	Majlis Daerah Kerian
33	T033	35m	4.988123	100.570456	Majlis Daerah Kerian

Proposed New Pole Coordinate					
No.	Pole Number	Distance (m)	Latitude	Longitude	Local Authority
34	T034	35m	4.987827	100.570303	Majlis Daerah Kerian
35	T035	35m	4.987507	100.570133	Majlis Daerah Kerian
36	T036	35m	4.987232	100.570001	Majlis Daerah Kerian
37	T037	35m	4.987082	100.569920	Majlis Daerah Kerian
38	T038	35m	4.987732	100.575902	Majlis Daerah Kerian
39	T039	35m	4.987619	100.576193	Majlis Daerah Kerian
40	T040	35m	4.987492	100.576460	Majlis Daerah Kerian
41	T041	35m	4.987363	100.576759	Majlis Daerah Kerian
42	T042	35m	4.987235	100.577051	Majlis Daerah Kerian
43	T043	30m	4.987110	100.577351	Majlis Daerah Kerian
44	T044	35m	4.987013	100.577591	Majlis Daerah Kerian
45	T045	35m	4.986735	100.577387	Majlis Daerah Kerian
46	T046	35m	4.986531	100.577297	Majlis Daerah Kerian
47	T047	30m	4.986276	100.577548	Majlis Daerah Kerian
48	T048	35m	4.985977	100.577446	Majlis Daerah Kerian
49	T049	35m	4.985839	100.577733	Majlis Daerah Kerian
50	T050	35m	4.985715	100.578033	Majlis Daerah Kerian
51	T051	35m	4.985591	100.578319	Majlis Daerah Kerian
52	T052	35m	4.985461	100.578620	Majlis Daerah Kerian
53	T053	35m	4.985330	100.578928	Majlis Daerah Kerian
54	T054	35m	4.985199	100.579234	Majlis Daerah Kerian
55	T055	35m	4.985060	100.579538	Majlis Daerah Kerian
56	T056	35m	4.984909	100.579823	Majlis Daerah Kerian
57	T057	35m	4.984784	100.580091	Majlis Daerah Kerian
58	T058	35m	4.984687	100.580287	Majlis Daerah Kerian
59	T059	35m	4.984934	100.580411	Majlis Daerah Kerian
60	T060	35m	4.985242	100.580560	Majlis Daerah Kerian
61	T061	25m	4.985528	100.580720	Majlis Daerah Kerian
62	T062	35m	4.985423	100.580875	Majlis Daerah Kerian
63	T063	35m	4.985135	100.580738	Majlis Daerah Kerian
64	T064	35m	4.984827	100.580566	Majlis Daerah Kerian
65	T065	35m	4.984610	100.580452	Majlis Daerah Kerian
66	T066	35m	4.984484	100.580762	Majlis Daerah Kerian
67	T067	35m	4.984345	100.581059	Majlis Daerah Kerian
68	T068	35m	4.984230	100.581356	Majlis Daerah Kerian
69	T069	35m	4.984099	100.581666	Majlis Daerah Kerian
70	T070	35m	4.983956	100.581978	Majlis Daerah Kerian
71	T071	35m	4.983833	100.582249	Majlis Daerah Kerian
72	T072	20m	4.983794	100.582395	Majlis Daerah Kerian
73	T073	35m	4.984095	100.582537	Majlis Daerah Kerian
74	T074	35m	4.984422	100.582717	Majlis Daerah Kerian
75	T075	35m	4.984711	100.582866	Majlis Daerah Kerian



PROJEK PENYEDIAAN DAN PENYELENGGARAAN POINT OF PRESENCE (POP) FASA 2: HAB INFRASTRUKTUR GENTIAN OPTIK BERTAMBAHAN DENGAN SEKOLAH, KAWASAN PERINDUSTRIAN, PREMIS KERAJAAN DAN KOMUNITI SEKITARNYA OLEH KEMENTERIAN KOMUNIKASI MALAYSIA - ZON UTARA (KKMM.400-11/17/132(1))

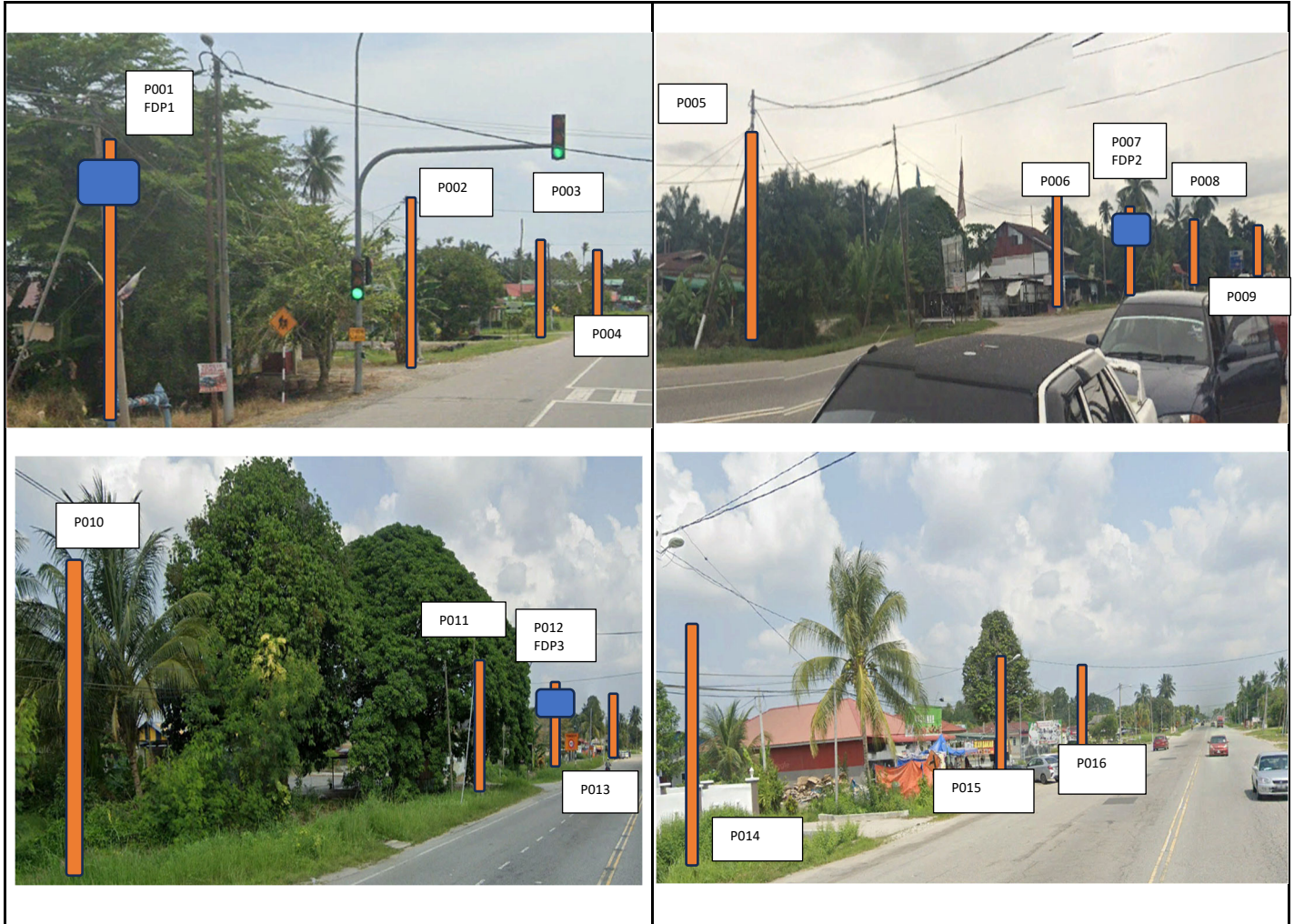


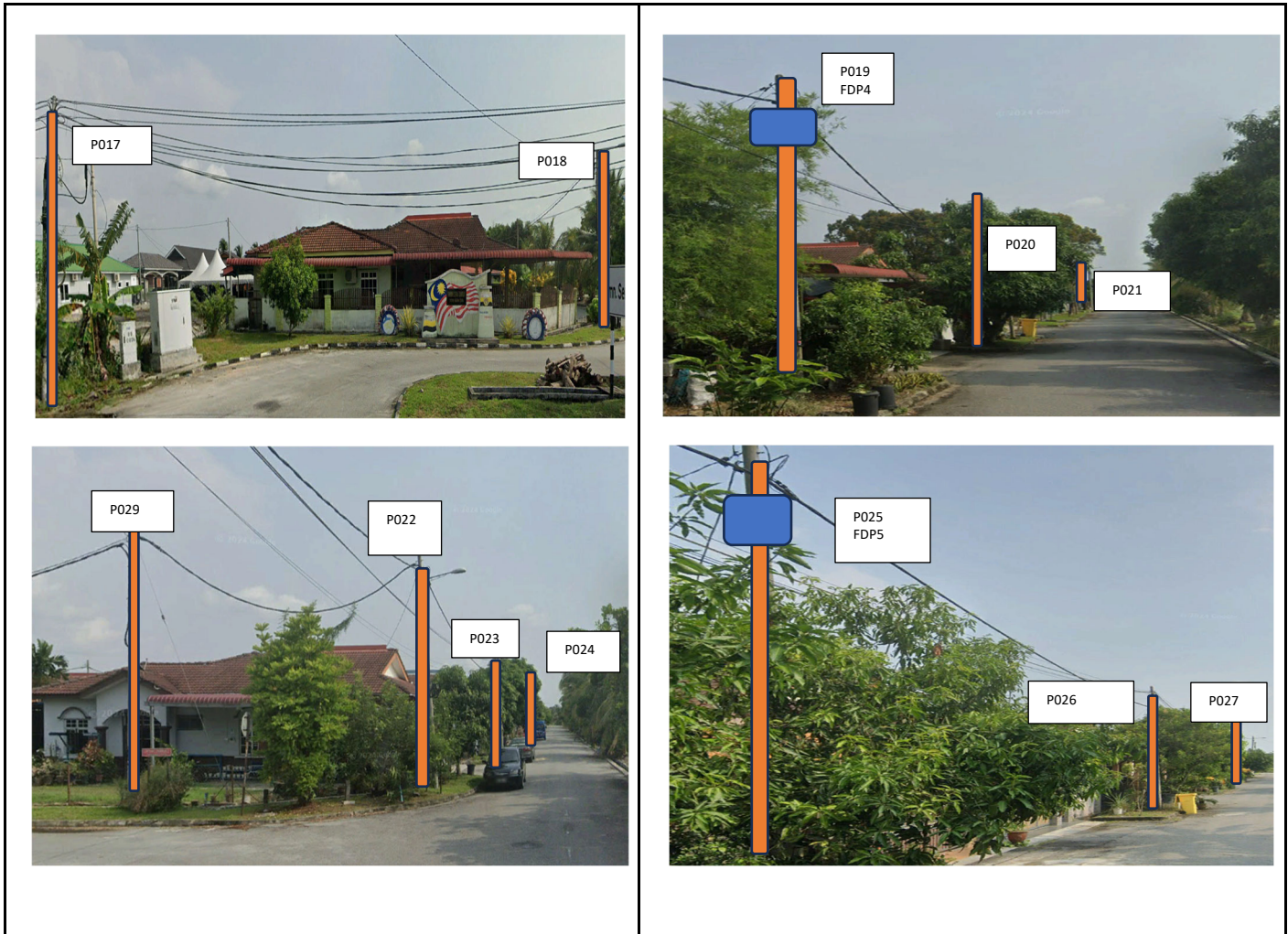
SEGALA DELIMA (M) SDN. BHD.

Proposed New Pole Coordinate					
No.	Pole Number	Distance (m)	Latitude	Longitude	Local Authority
76	T076	35m	4.984644	100.583148	JKR Daerah Kerian

5.0 SITE PHOTOS - PROPOSED HDD AND NEW MANHOLE (N/A)

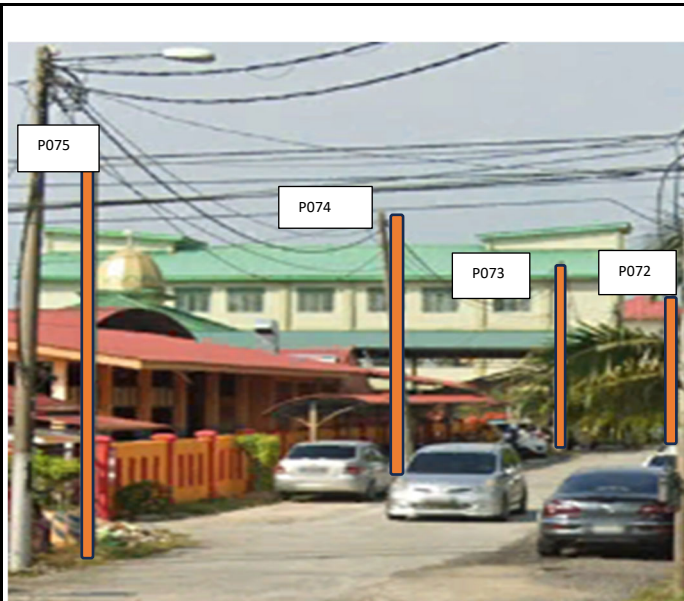
6.0 SITE PHOTOS - PROPOSED NEW POLE



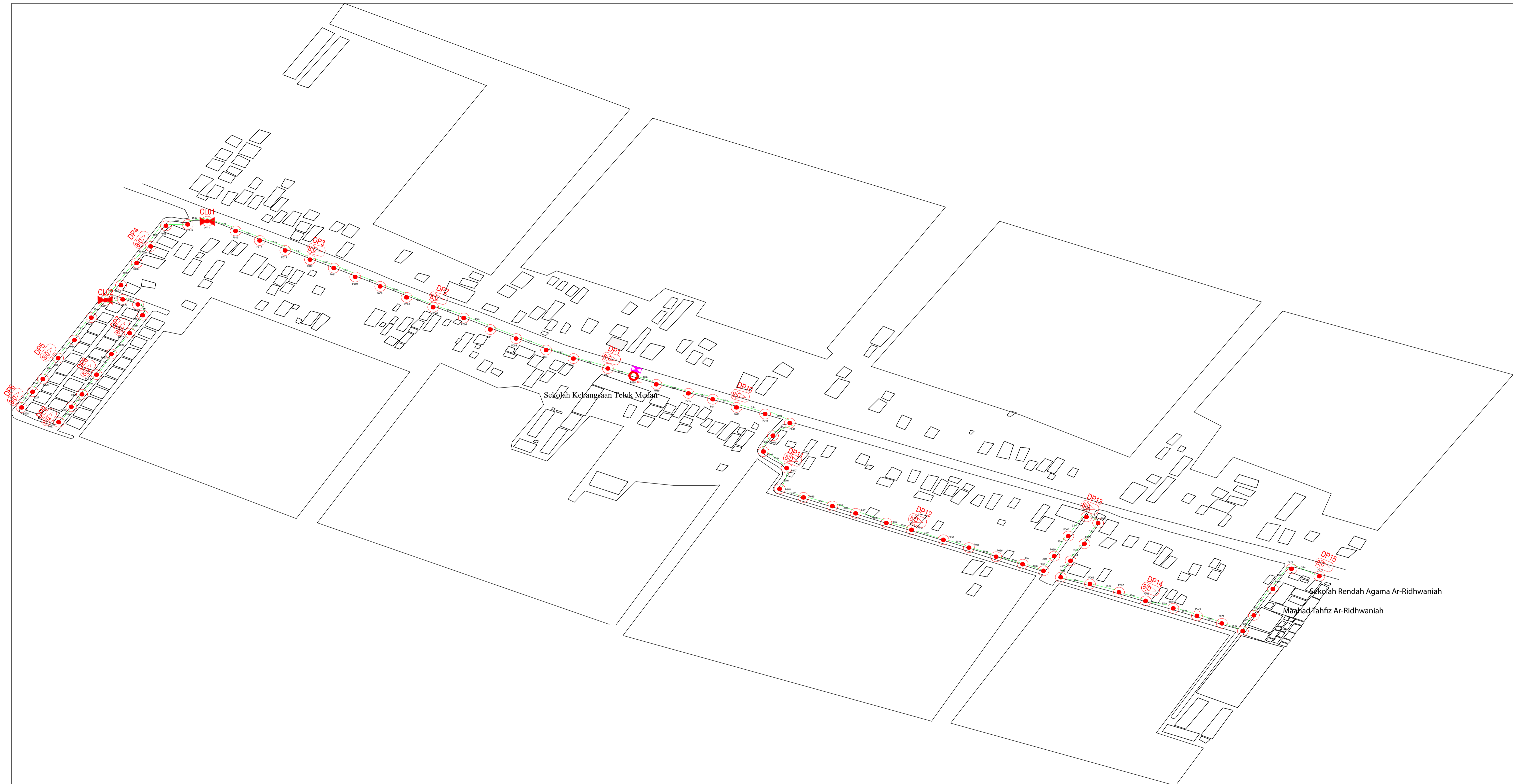








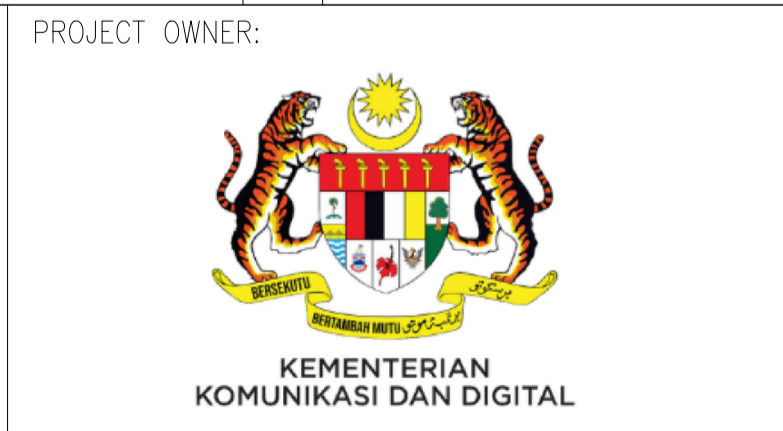
NO	LOCAL COUNCIL / AUTHORITY	REMARK
1	Majlis Daerah Kerian	1966m
2	JKR Daerah Kerian	769m



12C FOC	Installed 1:4 / 1:8 / 1:32 splitter	Installed Pole (9m)	1	Suspension	B30	New Manhole (PIT)	Micro-Trenching (Meter)	MH1	MH NO.	
24C FOC	Installed Patch Cord	Installed Pole (7.5M)	75	Tension	C7	New Manhole(JRC7)	Temporary Infra (Meter)	TKS-1	Existing TNB Pole NO.	
48C FOC	FDC	Installed Pole (6.7M)	1	Pole Ring		FDP Boundary	Loop / Coil (Meter)	P001	New Pole NO.	
96C FOC	Closure	Existing TNB Pole	2	FDP with (1:8) splitter	15	HDD (Meter)	Active Outdoor Cabinet	CL01	Closure NO.	
144C FOC	Existing Closure	Installed Riser		Existing Manhole		Open Cut (Meter)	C01	FDC NO.	DP1	FDP NO.

ACTUAL HOMEPASS :

KEY PLAN:



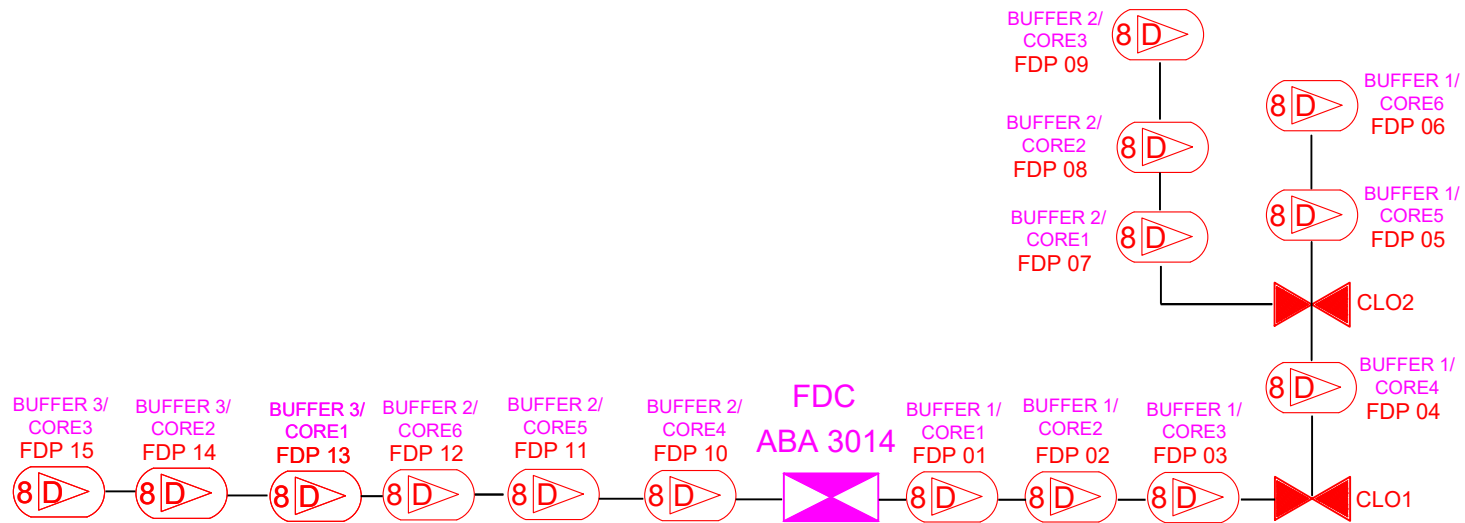
SUB-CONTRACTOR:
SEGALA DELIMA (M) SDN BHD
 NO8, JALAN AMPANG BARU 6B
 PUSAT PERDAGANGAN AMPANG BARU
 31350 IPOH PERAK.
 E-MAIL : SEGALA.DELIMA@GMAIL.COM

PROJECT TITLE:
**CONTRACT FOR SURVEY TECHNICAL
 PROPOSAL AND WAYLEAVE & PERMITTING
 APPROVAL POP 2 PROJECT**

DRAWING TITLE:
ABA3014 SEKOLAH KEBANGSAAN TELUK MEDAN

PROJECT PHASE:
POP2

Design By : HELMI	Date : 29/12/2024
Drawn By : HELMI	Scale : 1 : 5000
Checked By :	Job Number :
DRAWING NUMBER :	Sheet : 1 / 1
	Size : A1



	12C FOC	Installed 1:4 / 1:8 / 1:32 splitter		Installed Pole (9m)		Suspension		New Manhole (PIT)		Micro-Trenching (Meter)		MH NO.
	24C FOC	Installed Patch Cord		Installed Pole (7.5M)		Tension		New Manhole (RC7)		Temporary Infra (Meter)		Existing TNB Pole NO.
	48C FOC	FDC		Installed Pole (6.7M)		Pole Ring		FDP Boundary		Loop / Cull (Meter)		New Pole NO.
	96C FOC	Closure		Existing TNB Pole		FDP with (1:8) splitter		HDD (Meter)		Active Outdoor Cabinet		Closure NO.
	144C FOC	Existing Closure		Installed Riser		Existing Manhole		Open Cut (Meter)		FDC NO.		FDP NO.

KEY PLAN:	PROJECT OWNER: 	MAIN CONTRACTOR: PRIVASAT	SUB-CONTRACTOR: 	PROJECT TITLE: ABA3014 SEKOLAH KEBANGSAAN TELUK MEDAN	DRAWING TITLE: CORE ASSIGNMENT DRAWING	Design By : Date : 2024
					PROJECT PHASE: POP 2	Scale : 1 : 5000
						Job Number :
						Sheet : 1 / 1
						Size : A1

ACTUAL HOMEPASS :