

TECHNICAL PROPOSAL

POP2 ABC0064 SEKOLAH JENIS KEBANGSAAN (CINA) TANAH MAS (D-SIDE)

Company Name	:	STEADCOM SDN BHD
Company Address	:	11-3, Jalan Puteri 2/6, Bandar Puteri, 47100 Puchong, Selangor
Prepared By	:	Fariz Aizat
Date	:	6/12/2024



POINT A

POINT B

Starting Point

Site / Boundary Name	:	SEKOLAH JENIS KEBANGSAAN (CINA) TANAH MAS
Address	:	Jalan Tapah , 35500 Bidor, Perak.
District	:	Bidor
Postcode	:	35500
State	:	Perak
GPS Coordinate	:	4.144290, 101.266412
LRD	:	A

End Point

Site / Boundary Name	:	SEKOLAH JENIS KEBANGSAAN (CINA) TANAH MAS
Address	:	Jalan Tapah , 35500 Bidor, Perak.
District	:	Bidor
Postcode	:	35500
State	:	Perak
GPS Coordinate	:	4.145021, 101.265173
LRD	:	B

Work Summary

No	Proposed Distance and Method	Unit	Qty
1	Horizontal Directional Drilling (HDD)	m	0
2	Carriage Way Open trench (CW)	m	0
3	Grass Verge Open Trenching (GV)	m	0
4	Micro trenching (MT)	m	0
	Total		0

	Other Information	Unit	Qty
1	Proposed Manhole	EA	0
2	Proposed Pole	EA	57
3	Joint Closure	EA	2
4	Estimated time required for completion	days	30

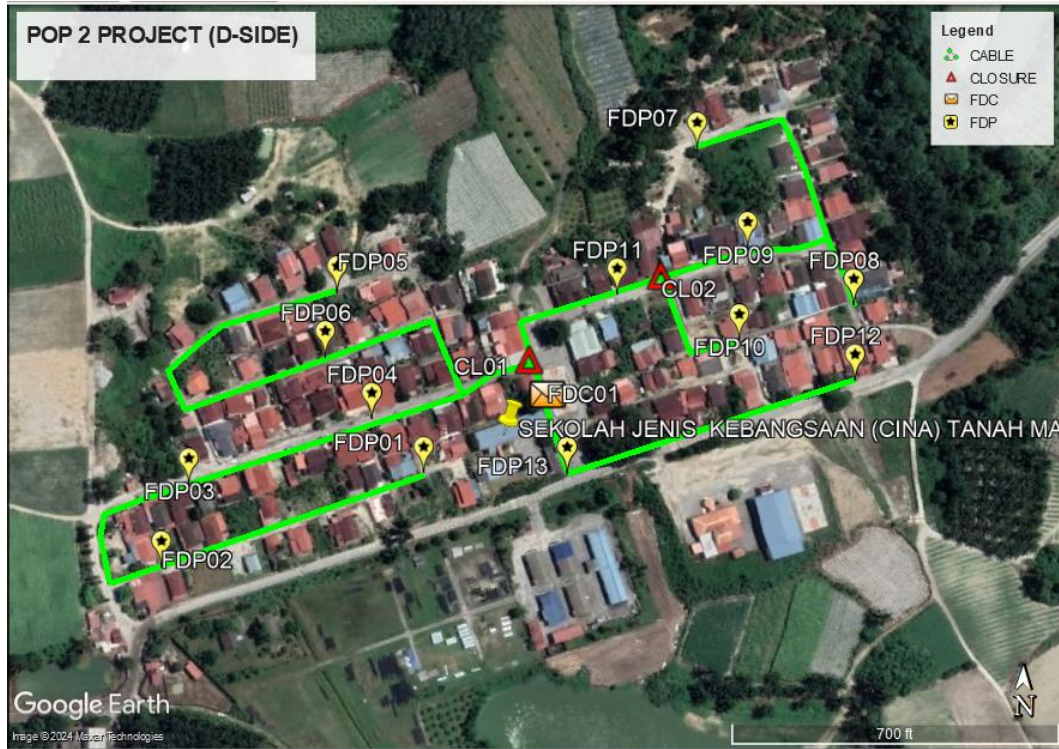
Local Authority Summary

1. Daerah Tapah

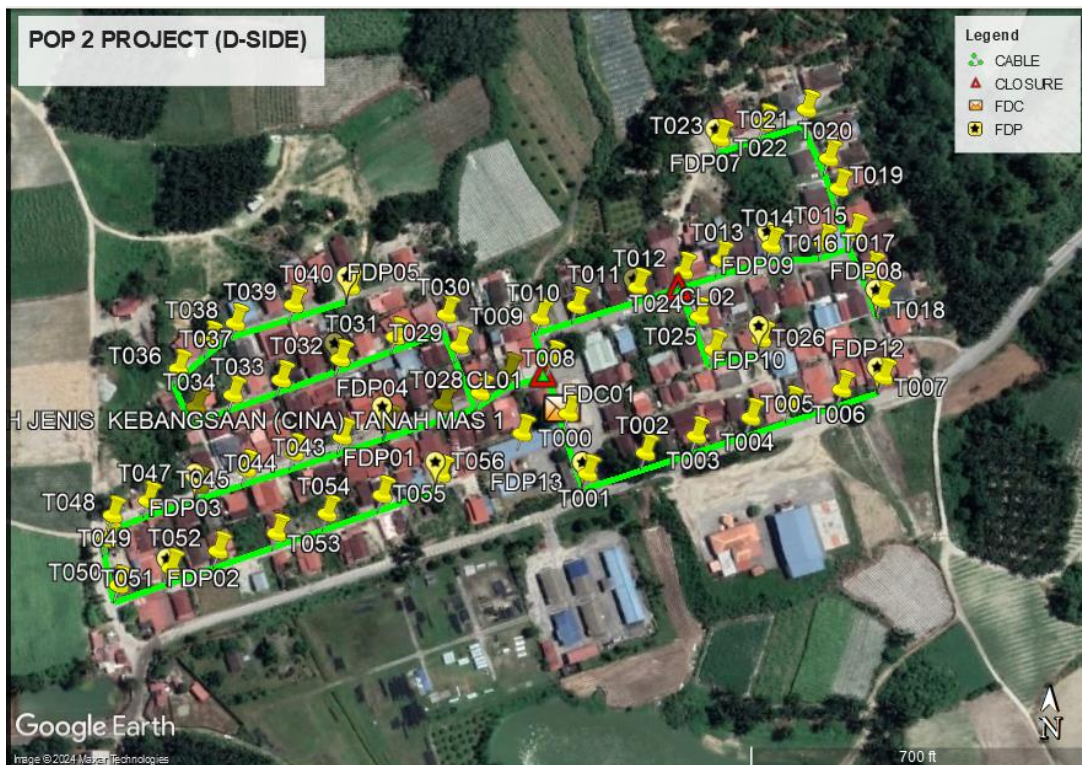
Bil	Items	Owner	Quantity	Distance(m)
1	HDD	JKR	-	-
		Majlis	-	-
		Estate / Private Land	-	-
2	New Pole	JKR	-	-
		Majlis	57PCS	1730m
		Estate / Private Land	-	-
3	Existing TNB Pole	JKR	-	-
		Majlis	-	-
		Estate / Private Land	-	-
Total				1730m

Site Plan – KMZ (Overview site area)

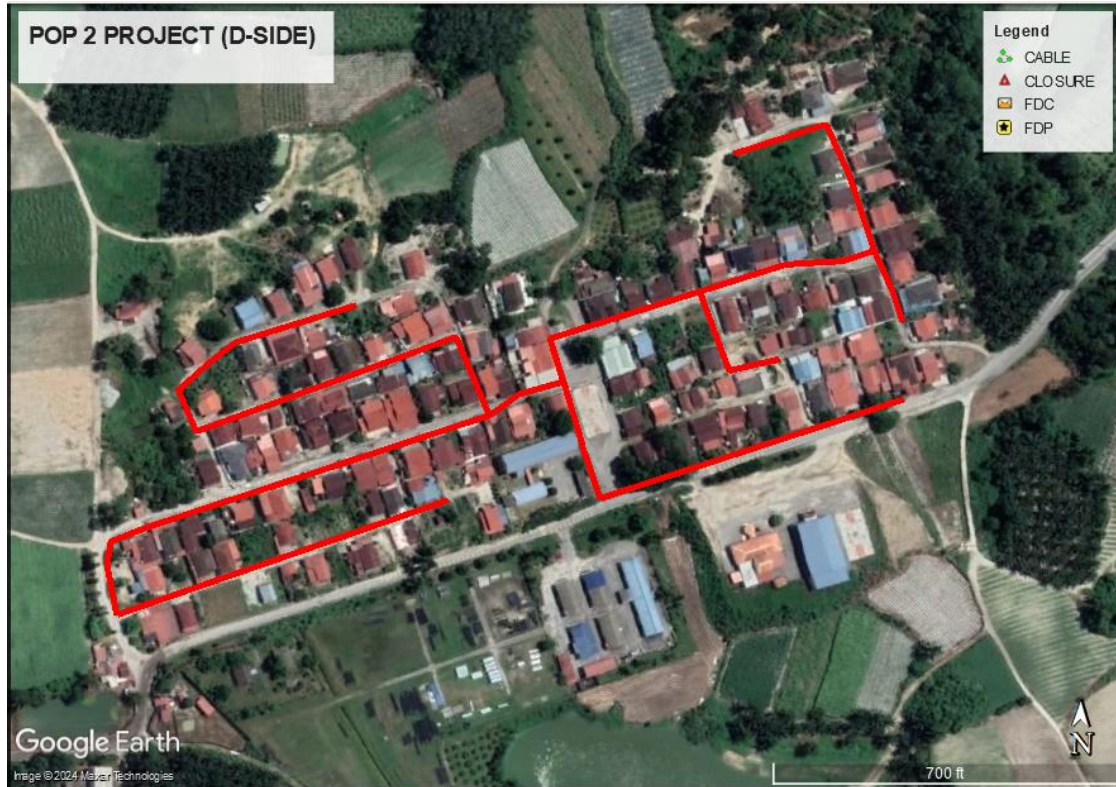
Proposed FDP and Closure



Proposed New Pole



Site Plan – KMZ Routing (All Local Authority)

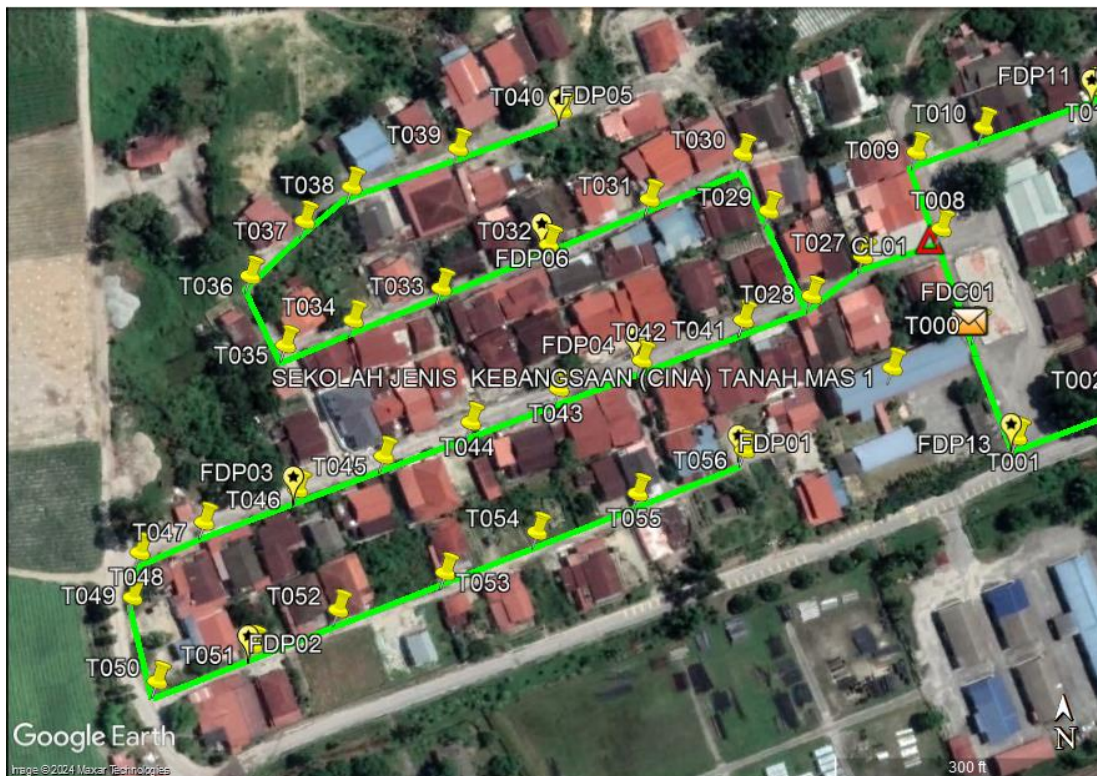
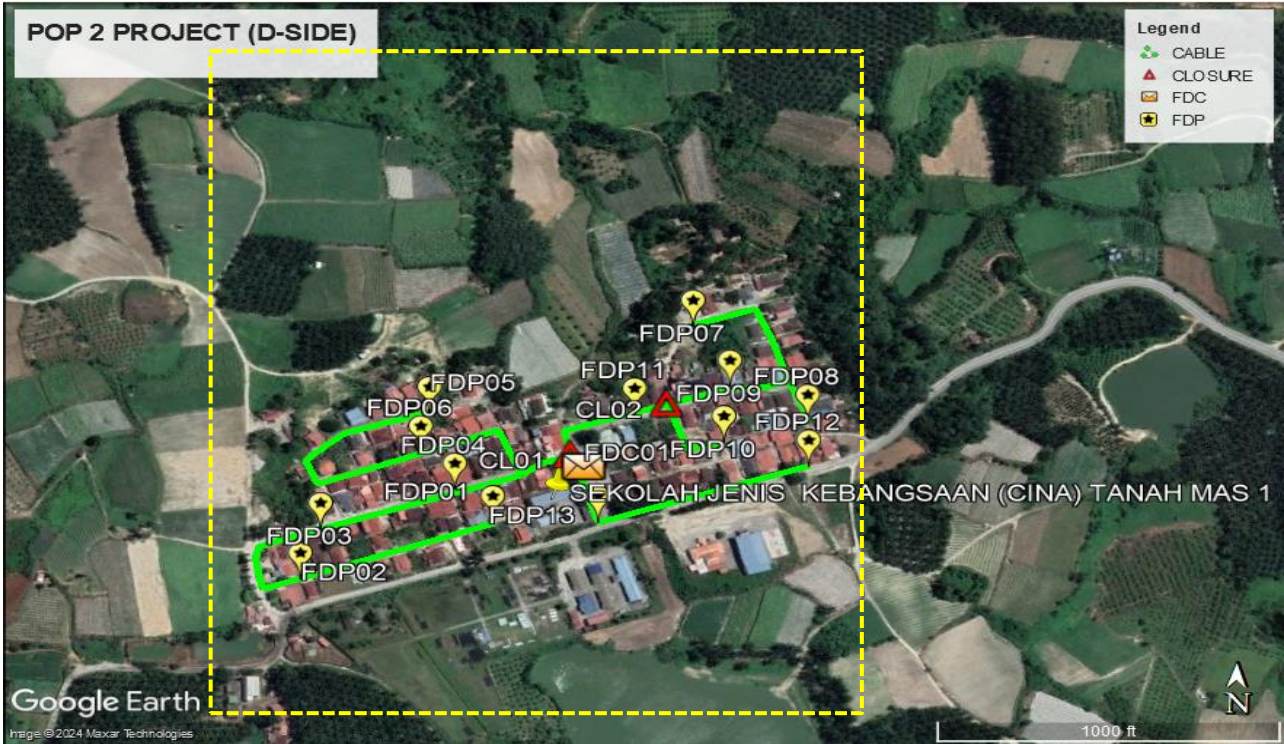


Green Colour – JKR

Red Colour – Majlis Daerah Tapah

Site Plan – KMZ Routing (All site area)

Route 1

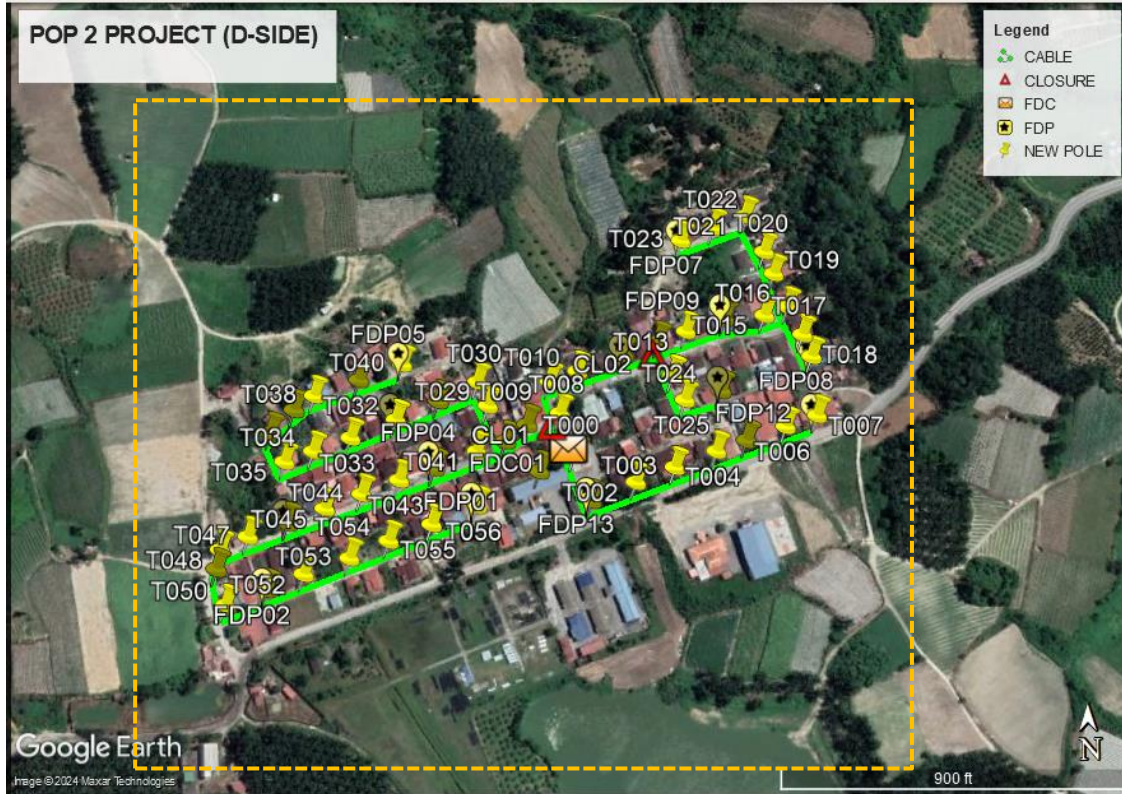


Route 1.1



Route 1.2

Site Plan – KMZ Routing (Proposed new Pole)



Proposed New Pole Lat & Long Table

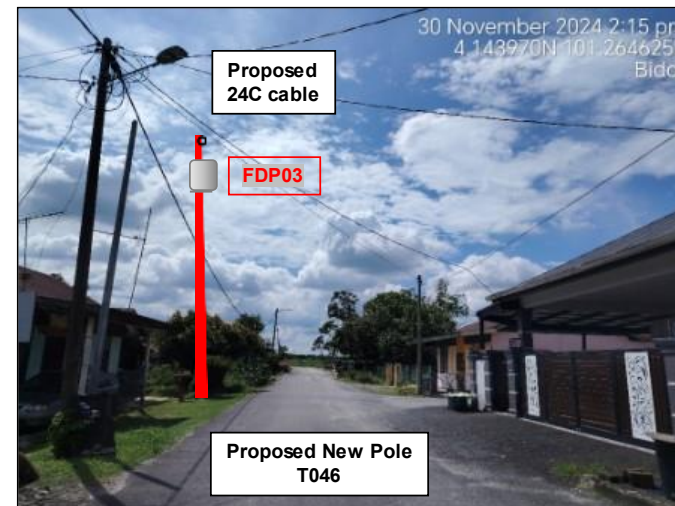
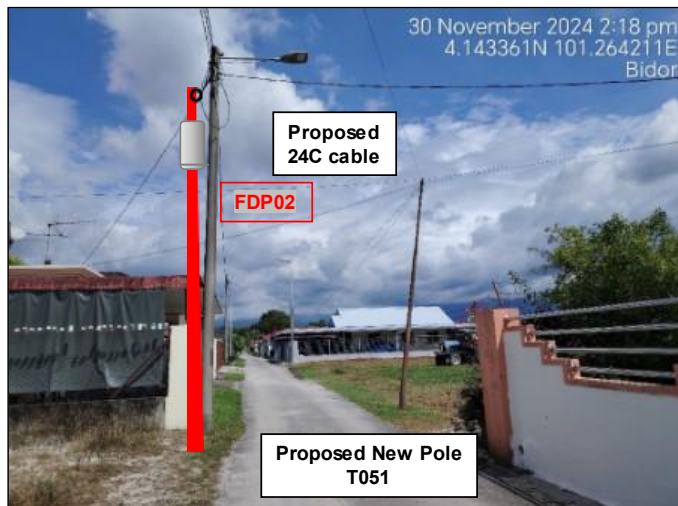
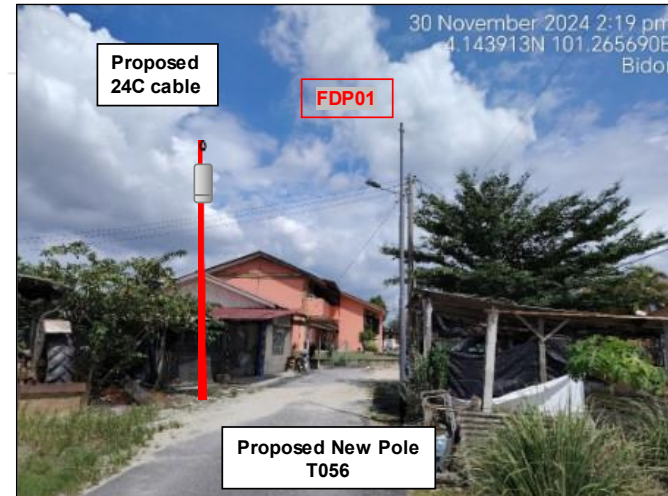
No.	Label	Pole & Manhole ID	Latitude	Longitude	Local Authority
1	OLT / FDC	T000	4.144249	101.266439	MAJLIS DAERAH TAPAH
2	FDP01	T056	4.143882	101.265717	MAJLIS DAERAH TAPAH
3	FDP02	T052	4.143304	101.264183	MAJLIS DAERAH TAPAH
4	FDP03	T046	4.143782	101.264331	MAJLIS DAERAH TAPAH
5	FDP04	T042	4.144164	101.265405	MAJLIS DAERAH TAPAH
6	FDP05	T040	4.144938	101.265169	MAJLIS DAERAH TAPAH
7	FDP06	T032	4.144526	101.265123	MAJLIS DAERAH TAPAH
8	FDP07	T023	4.145842	101.267266	MAJLIS DAERAH TAPAH
9	FDP08	T018	4.144947	101.268212	MAJLIS DAERAH TAPAH
10	FDP09	T014	4.145239	101.267574	MAJLIS DAERAH TAPAH
11	FDP10	T026	4.144704	101.267533	MAJLIS DAERAH TAPAH
12	FDP11	T011	4.144981	101.266817	MAJLIS DAERAH TAPAH
13	FDP12	T007	4.144507	101.268236	MAJLIS DAERAH TAPAH
14	FDP13	T001	4.143908	101.266559	MAJLIS DAERAH TAPAH
15	CL01	T008	4.144554	101.266335	MAJLIS DAERAH TAPAH
16	CL02	T012	4.145078	101.267075	MAJLIS DAERAH TAPAH

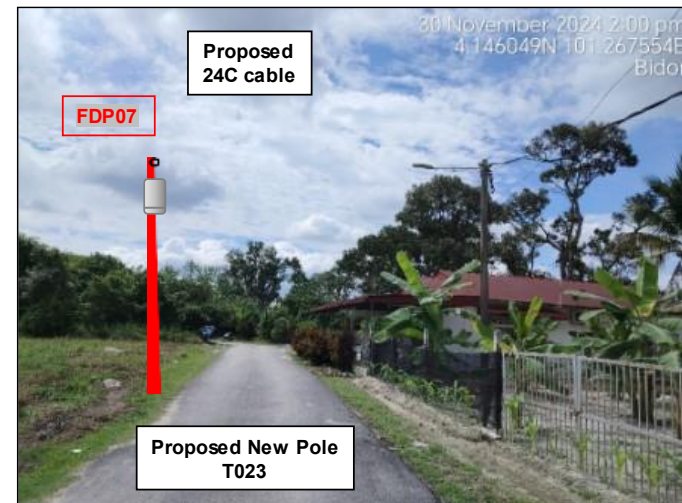
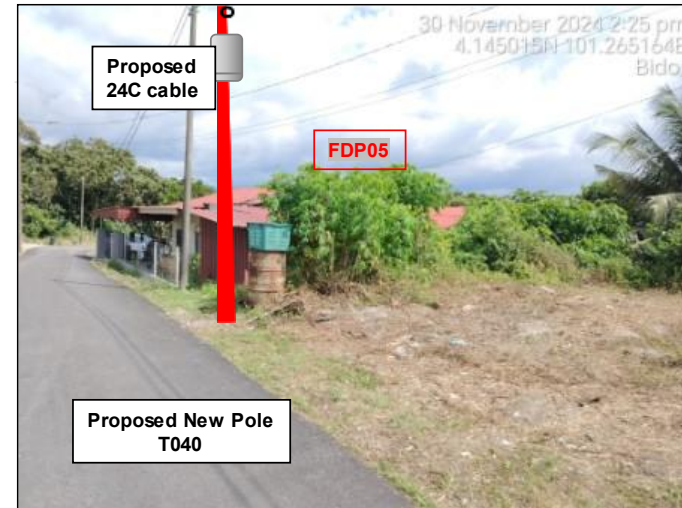
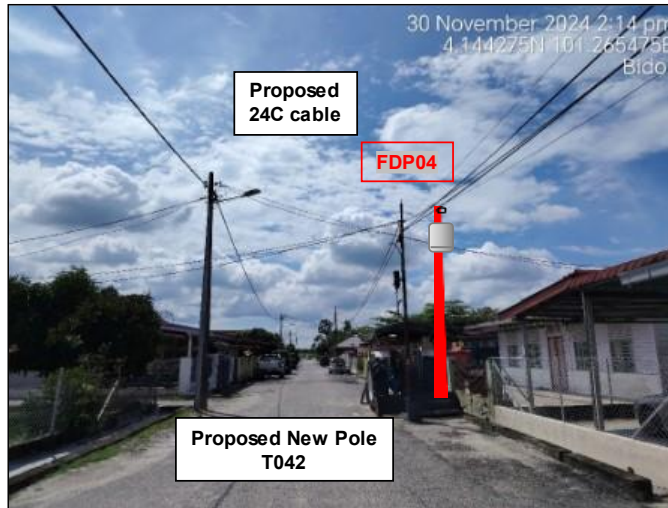
Overall Pole (Proposed New)

No.	Pole & Manhole ID	Distance	Latitude	Longitude	Local Authority
1	T000	0	4.144249	101.266439	MAJLIS DAERAH TAPAH
2	T001	40	4.143908	101.266559	MAJLIS DAERAH TAPAH
3	T002	38	4.144037	101.266887	MAJLIS DAERAH TAPAH
4	T003	34	4.144142	101.267176	MAJLIS DAERAH TAPAH
5	T004	36	4.144255	101.267485	MAJLIS DAERAH TAPAH
6	T005	27	4.144331	101.267709	MAJLIS DAERAH TAPAH
7	T006	33	4.144429	101.268001	MAJLIS DAERAH TAPAH
8	T007	28	4.144507	101.268236	MAJLIS DAERAH TAPAH
9	T008	35	4.144554	101.266335	MAJLIS DAERAH TAPAH
10	T009	27	4.144792	101.266263	MAJLIS DAERAH TAPAH
11	T010	25	4.144865	101.266470	MAJLIS DAERAH TAPAH
12	T011	40	4.144981	101.266817	MAJLIS DAERAH TAPAH
13	T012	32	4.145078	101.267075	MAJLIS DAERAH TAPAH
14	T013	25	4.145151	101.267285	MAJLIS DAERAH TAPAH
15	T014	34	4.145239	101.267574	MAJLIS DAERAH TAPAH
16	T015	33	4.145262	101.267873	MAJLIS DAERAH TAPAH
17	T016	22	4.145324	101.268048	MAJLIS DAERAH TAPAH
18	T017	30	4.145112	101.268151	MAJLIS DAERAH TAPAH
19	T018	16	4.144947	101.268212	MAJLIS DAERAH TAPAH
20	T019	31	4.145577	101.267954	MAJLIS DAERAH TAPAH
21	T020	20	4.145746	101.267889	MAJLIS DAERAH TAPAH
22	T021	32	4.146023	101.267755	MAJLIS DAERAH TAPAH
23	T022	30	4.145936	101.267514	MAJLIS DAERAH TAPAH
24	T023	30	4.145842	101.267266	MAJLIS DAERAH TAPAH
25	T024	30	4.144823	101.267176	MAJLIS DAERAH TAPAH
26	T025	25	4.144638	101.267263	MAJLIS DAERAH TAPAH
27	T026	32	4.144704	101.267533	MAJLIS DAERAH TAPAH
28	T027	29	4.144473	101.266092	MAJLIS DAERAH TAPAH
29	T028	22	4.144354	101.265932	MAJLIS DAERAH TAPAH
30	T029	33	4.144619	101.265804	MAJLIS DAERAH TAPAH
31	T030	22	4.144797	101.265726	MAJLIS DAERAH TAPAH
32	T031	36	4.144661	101.265437	MAJLIS DAERAH TAPAH
33	T032	38	4.144526	101.265123	MAJLIS DAERAH TAPAH
34	T033	40	4.144397	101.264788	MAJLIS DAERAH TAPAH
35	T034	32	4.144303	101.264513	MAJLIS DAERAH TAPAH
36	T035	25	4.144229	101.264301	MAJLIS DAERAH TAPAH
37	T036	28	4.144445	101.264195	MAJLIS DAERAH TAPAH
38	T037	28	4.144612	101.264367	MAJLIS DAERAH TAPAH
39	T038	20	4.144714	101.264515	MAJLIS DAERAH TAPAH
40	T039	40	4.144827	101.264847	MAJLIS DAERAH TAPAH
41	T040	38	4.144938	101.265169	MAJLIS DAERAH TAPAH

42	T041	23	4.144283	101.265720	MAJLIS DAERAH TAPAH
43	T042	35	4.144164	101.265405	MAJLIS DAERAH TAPAH
44	T043	32	4.144081	101.265147	MAJLIS DAERAH TAPAH
45	T044	32	4.143982	101.264872	MAJLIS DAERAH TAPAH
46	T045	32	4.143881	101.264601	MAJLIS DAERAH TAPAH
47	T046	33	4.143782	101.264331	MAJLIS DAERAH TAPAH
48	T047	34	4.143686	101.264040	MAJLIS DAERAH TAPAH
49	T048	25	4.143596	101.263838	MAJLIS DAERAH TAPAH
50	T049	16	4.143457	101.263813	MAJLIS DAERAH TAPAH
51	T050	30	4.143196	101.263885	MAJLIS DAERAH TAPAH
52	T051	37	4.143304	101.264183	MAJLIS DAERAH TAPAH
53	T052	32	4.143409	101.264451	MAJLIS DAERAH TAPAH
54	T053	40	4.143519	101.264785	MAJLIS DAERAH TAPAH
55	T054	35	4.143640	101.265072	MAJLIS DAERAH TAPAH
56	T055	38	4.143754	101.265385	MAJLIS DAERAH TAPAH
57	T056	40	4.143882	101.265717	MAJLIS DAERAH TAPAH

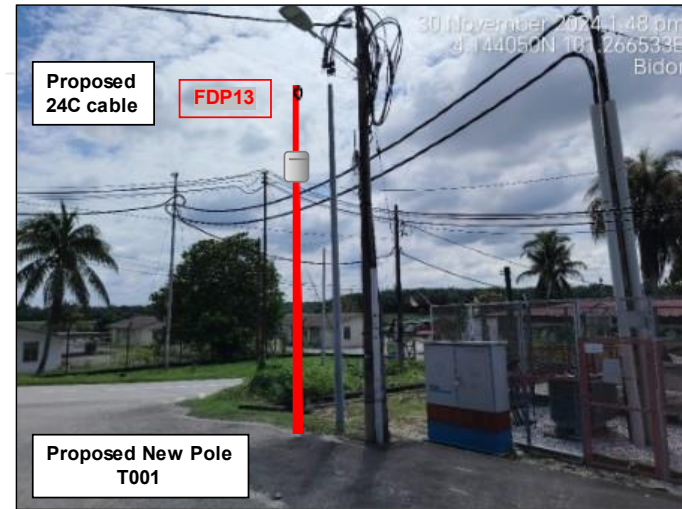
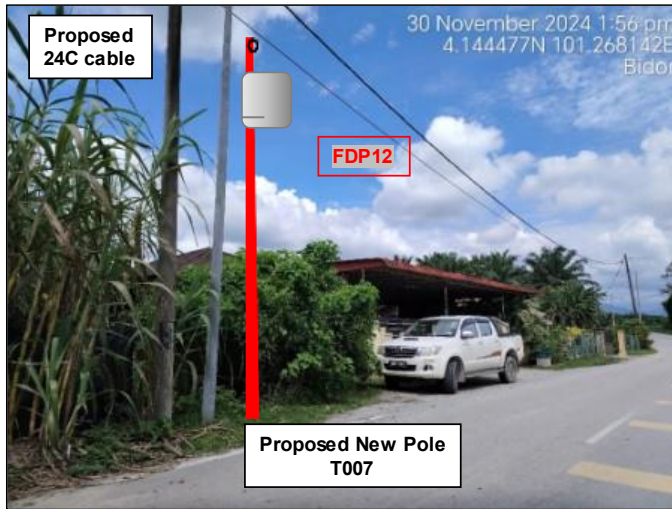
Site Photos – Proposed to install pole





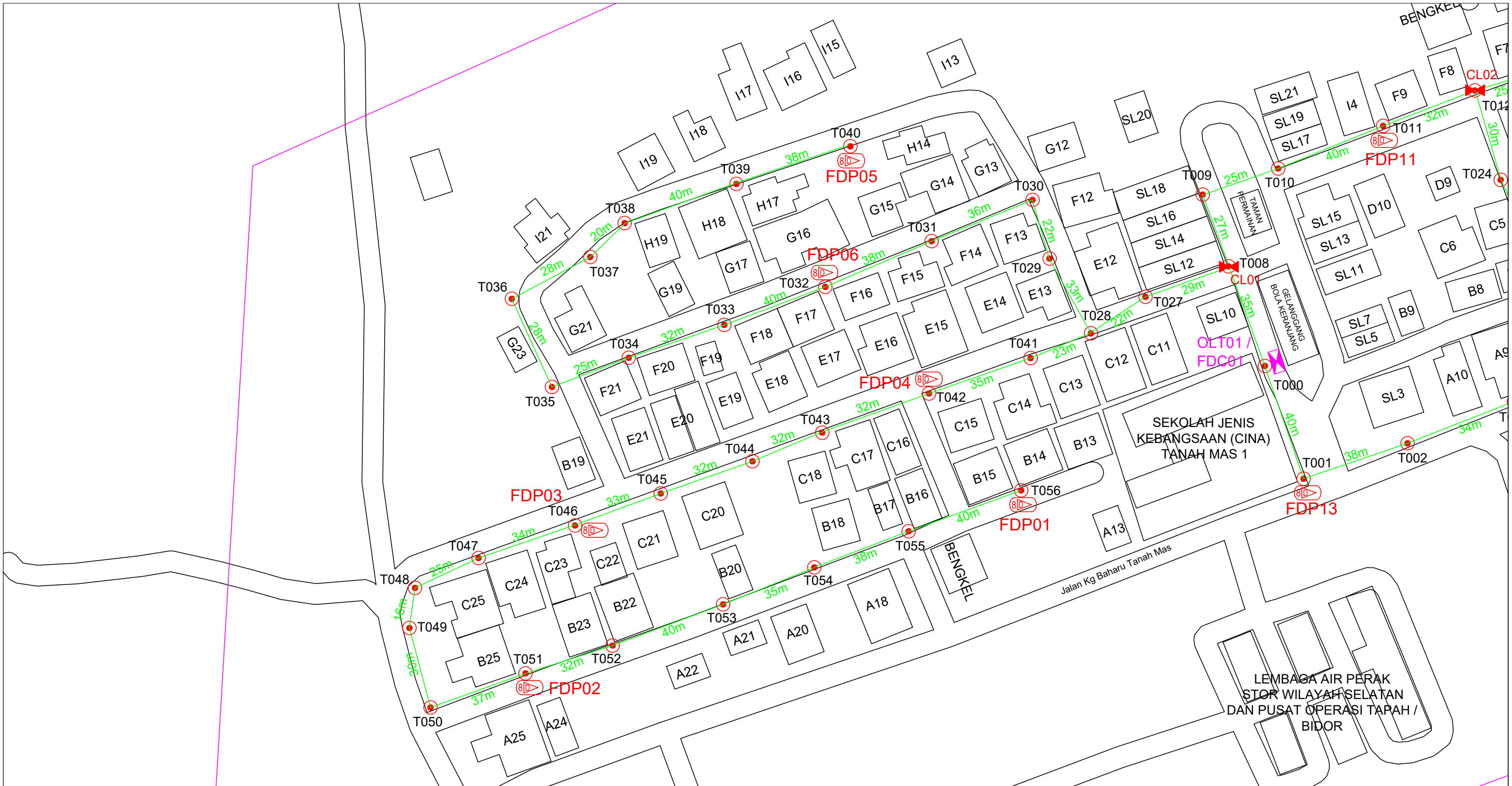
PROJEK PENYEDIAAN DAN PENYELENGGARAAN POINT OF PRESENCE (POP) FASA 2: HAB INFRASTRUKTUR GENTIAN OPTIK BERHAMPIRAN DENGAN SEKOLAH, KAWASAN PERINDUSTRIAN, PREMIS KERAJAAN DAN KOMUNITI SEKITARNYA OLEH KEMENTERIAN KOMUNIKASI MALAYSIA - ZON UTARA (KKMM.400-11/17/132(1))





3rd Parties Dependencies

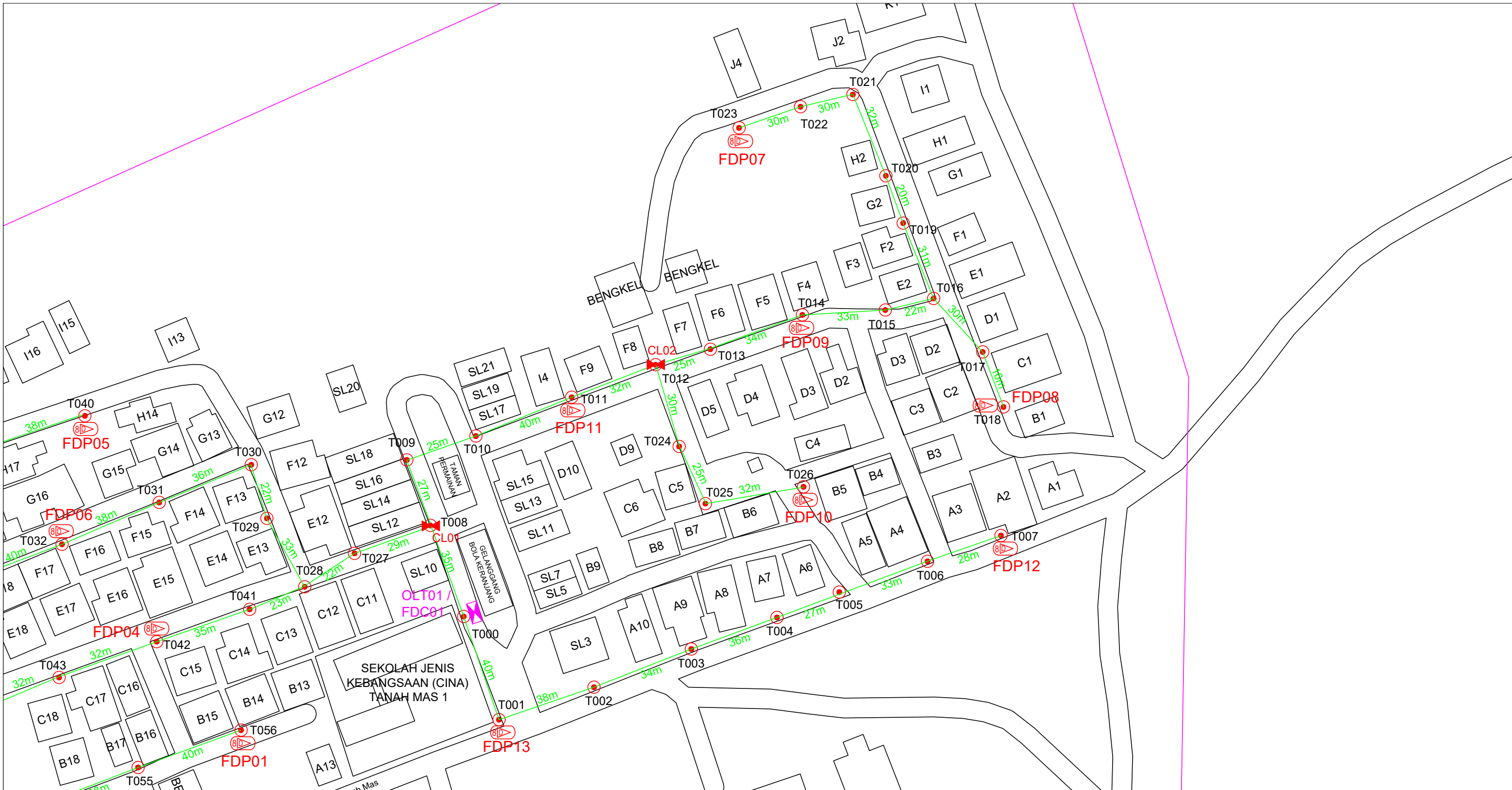
No.	Local Council/ Authority	Remark
1	Majlis Daerah Tapah	
2		
3		
4		
5		
6		



12C FOC	Installed 1:4 / 1:8 / 1:32 splitter	Installed Pole (9m)	Suspension	57	MB30	New Manhole (PIT)	Micro-Trenching (Meter)	MH1	MH NO.
24C FOC	1907m Installed Patch Cord	Installed Pole (7.5M)	Tension	108	C7	New Manhole(JRC7)	Temporary Infra (Meter)	TKS-1	Existing TNB Pole NO.
48C FOC	FDC	Installed Pole (6.7M)	Pole Ring	13		FDP Boundary	Loop / Coil (Meter)	P001	New Pole NO.
96C FOC	Closure	Existing TNB Pole	FDP with (1:8) splitter	13		HDD (Meter)	#	CL01	Closure NO.
144C FOC	Existing Closure	Installed Riser	Existing Manhole			Open Cut (Meter)	C01	DP1	FDP NO.

ACTUAL HOMEPASS :

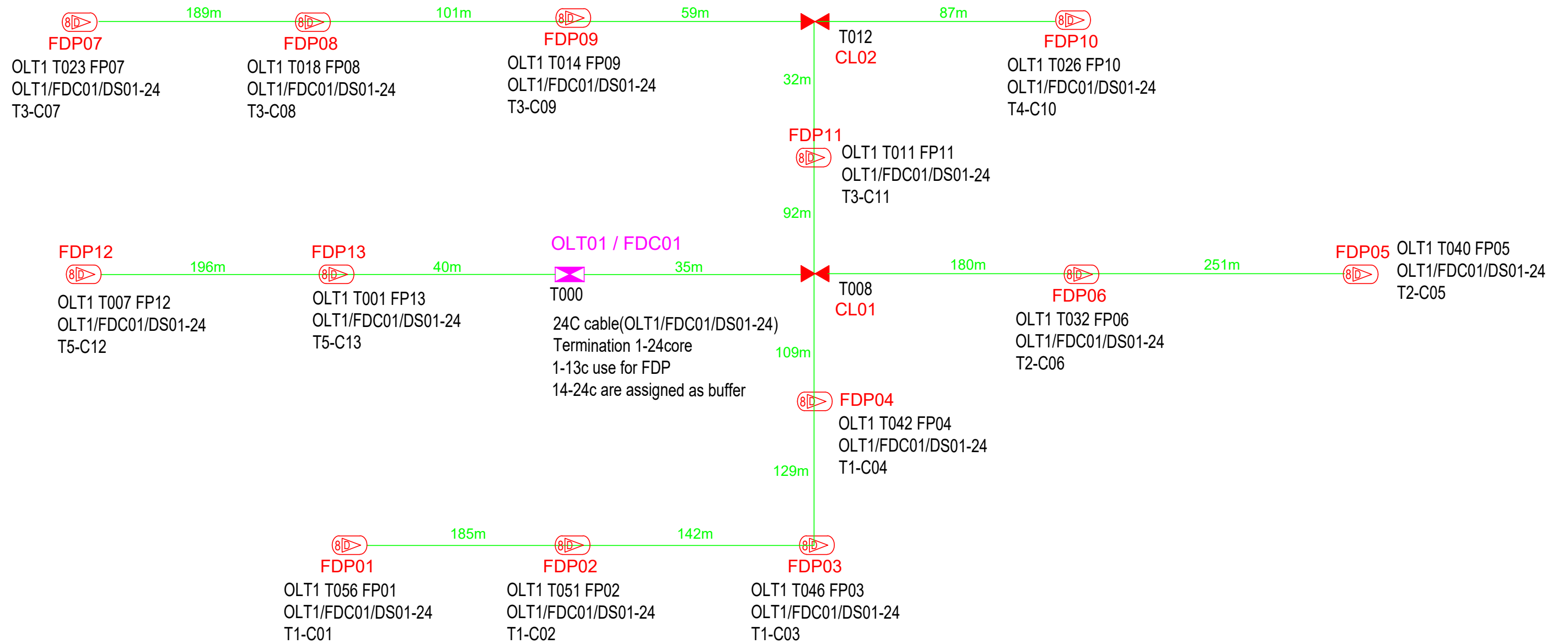
KEY PLAN:	PROJECT OWNER: APEX COMMUNICATIONS SDN BHD 187475-V PRIVASAT	MAIN CONTRACTOR: STEADCOM A member of OCK Group Berhad	SUB-CONTRACTOR:	PROJECT TITLE: CONTRACTOR FOR SURVEY, TECHNICAL PROPOSAL AND WAYLEAVE & PERMIT APPROVAL -POP2 PROJECT	DRAWING TITLE: Construction Drawing ABC0064 SJK (CINA) TANAH MAS PROJECT PHASE: POP 2	Design By : Date : 6/12/2024	Drawn By : Scale : NTS	Checked By : Job Number : JOB/NUMBER	DRAWING NUMBER : ABC0064-CD-01 Sheet : 2/3	THIS PRINT AND ITS COPYRIGHT ARE THE PROPERTY OF STEADCOM SDN BHD Size : A3
-----------	---	---	-----------------	--	---	---------------------------------	---------------------------	---	--	--



12C FOC	Installed 1:4 / 1:8 / 1:32 splitter	Installed Pole (9m)	Suspension	57	JB30	New Manhole (PIT)	Micro-Trenching (Meter)	MH1	MH NO.
24C FOC	Installed Patch Cord	Installed Pole (7.5M)	Tension	108	C7	New Manhole(JRC7)	Temporary Infra (Meter)	TKS-1	Existing TNB Pole NO.
48C FOC	FDC	Installed Pole (6.7M)	Pole Ring	13		FDP Boundary	Loop / Coil (Meter)	P001	New Pole NO.
96C FOC	Closure	Existing TNB Pole	FDP with (1:8) splitter	13		HDD (Meter)	#	CL01	Closure NO.
144C FOC	Existing Closure	Installed Riser	Existing Manhole			Open Cut (Meter)	C01	DP1	FDP NO.

ACTUAL HOMEPASS :

KEY PLAN:	PROJECT OWNER:	MAIN CONTRACTOR:	SUB-CONTRACTOR:	PROJECT TITLE:	DRAWING TITLE:	Design By :	Date :
				CONTRACTOR FOR SURVEY, TECHNICAL PROPOSAL AND WAYLEAVE & PERMIT APPROVAL -POP2 PROJECT	Construction Drawing ABC0064 SJK (CINA) TANAH MAS	Drawn By :	6/12/2024
					PROJECT PHASE:	Checked By :	Scale :
					POP 2	Job Number :	NTS
						DRAWING NUMBER :	Job Number :
						ABC0064-CD-01	JOB/NUMBER
						Sheet :	3/3
						THIS PRINT AND ITS COPYRIGHT ARE THE PROPERTY OF STEADCOM SDN BHD	Size :
							A3



12C FOC	Installed 1:4 / 1:8 / 1:32 splitter	Installed Pole (9m)	Suspension	57	UB30	New Manhole (PIT)	Micro-Trenching (Meter)	MH1	MH NO.
24C FOC	1907m Installed Patch Cord	Installed Pole (7.5M)	Tension	108	C7	New Manhole(JRC7)	Temporary Infra (Meter)	TKS-1	Existing TNB Pole NO.
48C FOC	FDC	Installed Pole (6.7M)	Pole Ring	13		FDP Boundary	Loop / Coil (Meter)	P001	New Pole NO.
96C FOC	Closure	Existing TNB Pole	FDP with (1:8) splitter	13		HDD (Meter)	#	CL01	Closure NO.
144C FOC	Existing Closure	Installed Riser	Existing Manhole			Open Cut (Meter)	C01	DP1	FDP NO.

ACTUAL HOMEPASS :

KEY PLAN:	PROJECT OWNER:	MAIN CONTRACTOR:	SUB-CONTRACTOR:	PROJECT TITLE:	DRAWING TITLE:	Design By :	Date :
				CONTRACTOR FOR SURVEY, TECHNICAL PROPOSAL AND WAYLEAVE & PERMIT APPROVAL -POP2 PROJECT	Construction Drawing ABC0064 SJK (CINA) TANAH MAS	Drawn By :	6/12/2024
					PROJECT PHASE:	Checked By :	Scale :
					POP 2	Job Number :	NTS
						DRAWING NUMBER :	Job Number :
						ABC0064-CD-01	JOB/NUMBER
							Sheet :
							1/1
							Size :
							A3

THIS PRINT AND ITS COPYRIGHT ARE THE PROPERTY OF STEADCOM SDN BHD