



TNB 3 PHASE ELECTRIC SUPPLY FOR LSS SELAMA (SINARAN ALAM PE) USING OVERHEAD CABLE.



Figure 1. ABC cable using pole from road junction to LSS Selama (Sinaran Alam PE).

Legend:

- 7.5m Spun Pole (17pcs)
- 9m Spun Pole (3pcs)



Electric supply will connect to the temporary site office first before connect to the Sinaran Alam PE after PE construction complete. ABC cable ($3 \times 35\text{mm}^2 + 25\text{mm}^2$) will be used. The length between tapping point and temporary site office is 650m.



Figure 2. Electric supply will connect to temporary site office.



Figure 3. Sinaran Alam PE area.



ABC cable route & spun pole from road junction will be installed at RHS of this road. The ABC cable will cross this road then go to temporary site office. This cable crossing road will use 9m spun pole.



Figure 4. Cable crossing will use 9m spun pole.

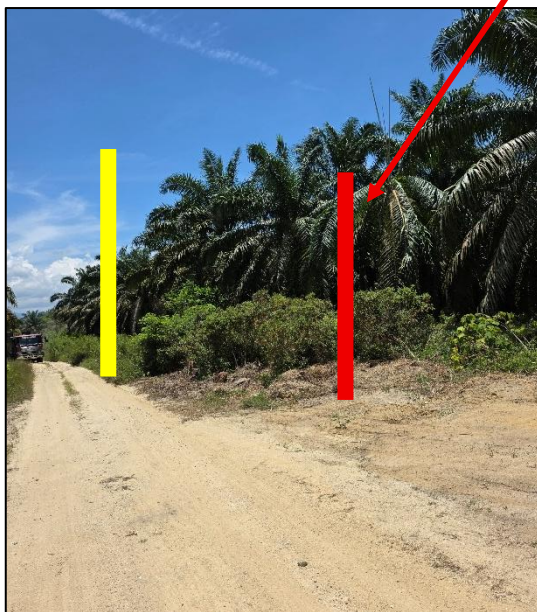


Figure 5. 9m spun pole (Red) 7.5m spun pole (Yellow)



Figure 6. Propose 7.5m spun pole install area.



Figure 7. Propose 7.5m spun pole install area.



Figure 8. 9m spun pole at junction road.



Figure 9. Propose to tap at this TNB pole (need to get permission TNB).



Figure 10. Propose temporary meter box and fuse box will install at this pole (SJ 8 B).



THANK YOU