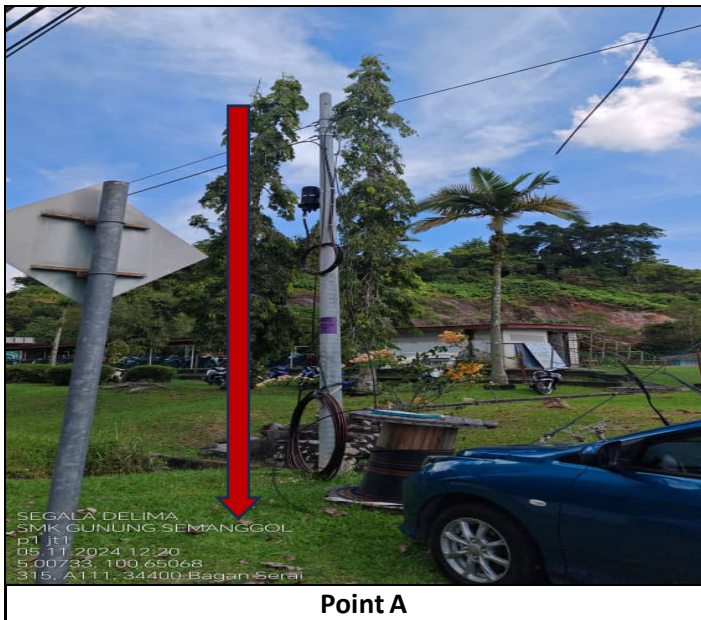


TECHNICAL PROPOSAL

POP2 AEA3089 SEKOLAH MENENGAH KEBANGSAAN GUNUNG SEMANGGOL (D-SIDE)

Company Name	: SEGALA DELIMA (M) SDN BHD
Company Address	: No. 8, Jalan Ampang Baru 6B, Pusat Perdagangan Baru, 31350 Ipoh, Perak
Prepared By	: Mohamad Helmi
Date	: 02/12/2024



Point A



Point B

Starting Point

Site / Boundary Name	: Sekolah Menengah Kebangsaan Gunung Semanggol
District	: Simpang Empat Semanggol
Postcode	: 34400
State	: Perak
GPS Coordinate	: 5.007502 100.650680
LRD	: A

End Point

Site / Boundary Name	: Sekolah Menengah Kebangsaan Gunung Semanggol
Address	: Tebuk Panchur
District	: Simpang Empat Semanggol
Postcode	: 34400
State	: Perak
GPS Coordinate	: 4.984322 100.651526
LRD	: B

1.0 WORK SUMMARY

NO	PROPOSED DISTANCE AND METHOD	UNIT	QUANTITY
1	Horizontal Directional Drilling (HDD)	m	90
2	Carriage Way Open Trench(CW)	m	0
3	Grass Verge Open Trenching (GV)	m	0
4	Micro Trenching (MT)	m	0
Total			0

NO	OTHER INFORMATION	UNIT	QUANTITY
1	Installation of Short Span ADSS Fiber Cables	m	2681
2	Install New Pole	ea	0
3	Install New JRC7 Manhole	ea	4
4	Install GI Riser 100mm	ea	4
5	Install Fiber Distribution Point and Closure (Splicing, Termination and Testing)	ea	13
6	Estimated Time Required for Completion	days	90

2.0 LOCAL AUTHORITY SUMMARY

Daerah Kerian

NO	ITEMS	Owner	Quantity	Distance (m)
1	HDD	JKR	2	90
		Majlis	-	-
		Estate / Private Land	-	-
2	New Pole	JKR	-	2681
		Majlis	-	-
		Estate / Private Land	-	-
Total Distance (m)				2771

3.0 SITE PLAN (KMZ)

3.1 Overview Site Area (Propose New Pole)



3.2 Proposed FDP and Closure



3.3 Site Plan - KMZ Routing (All Local Authority)



Red Colour - JKR
Road Blue Colour - Majlis Road

3.0 PROPOSED NEW MANHOLE

Proposed New Manhole Coordinate					
No.	Manhole Number	Distance (m)	Latitude	Longitude	Local Authority
1	MH01	30	4.998682	100.651380	JKR Daerah Kerian
2	MH02	30	4.998603	100.651270	JKR Daerah Kerian
3	MH03	60	4.993728	100.653150	JKR Daerah Kerian
4	MH04	60	4.993155	100.653181	JKR Daerah Kerian

4.0 PROPOSED NEW POLE

Existing Pole Coordinate					
No.	Pole Number	Distance (m)	Latitude	Longitude	Local Authority
1	T001	23	5.007375	100.650716	JKR Daerah Kerian
2	T002	34	5.007182	100.650730	JKR Daerah Kerian
3	T003	34	5.006896	100.650744	JKR Daerah Kerian
4	T004	32	5.006601	100.650741	JKR Daerah Kerian
5	T005	35	5.006297	100.650765	JKR Daerah Kerian
6	T006	40	5.005994	100.650795	JKR Daerah Kerian
7	T007	34	5.005654	100.650819	JKR Daerah Kerian
8	T008	31	5.005352	100.650840	JKR Daerah Kerian
9	T009	35	5.005088	100.650872	JKR Daerah Kerian
10	T010	36	5.004773	100.650866	JKR Daerah Kerian
11	T011	42	5.004469	100.650873	JKR Daerah Kerian
12	T012	35	5.004100	100.650905	JKR Daerah Kerian
13	T013	33	5.003789	100.650912	JKR Daerah Kerian
14	T014	39	5.003499	100.650904	JKR Daerah Kerian
15	T015	36	5.003152	100.650905	JKR Daerah Kerian
16	T016	34	5.002826	100.650909	JKR Daerah Kerian
17	T017	33	5.002520	100.650915	JKR Daerah Kerian
18	T018	32	5.002216	100.650911	JKR Daerah Kerian
19	T019	34	5.001933	100.650900	JKR Daerah Kerian
20	T020	39	5.001641	100.650898	JKR Daerah Kerian
21	T021	37	5.001286	100.650910	JKR Daerah Kerian
22	T022	31	5.000960	100.650917	JKR Daerah Kerian
23	T023	43	5.000689	100.650939	JKR Daerah Kerian
24	T024	24	5.000328	100.650964	JKR Daerah Kerian
25	T025	31	5.000040	100.650985	JKR Daerah Kerian
26	TP26	33	4.999731	100.651010	JKR Daerah Kerian
27	T027	28	4.999473	100.651051	JKR Daerah Kerian
28	T028	33	4.999178	100.651124	JKR Daerah Kerian
29	T029	27	4.998928	100.651216	JKR Daerah Kerian
30	T030	36	4.998662	100.651384	JKR Daerah Kerian
31	T031	27	4.998593	100.651282	JKR Daerah Kerian
32	T032	35	4.998292	100.651439	JKR Daerah Kerian
33	T033	38	4.998081	100.651509	JKR Daerah Kerian

Existing Pole Coordinate					
No.	Pole Number	Distance (m)	Latitude	Longitude	Local Authority
34	T034	38	4.997783	100.651639	JKR Daerah Kerian
35	T035	35	4.997507	100.651811	JKR Daerah Kerian
36	T036	34	4.997228	100.651910	JKR Daerah Kerian
37	T037	33	4.996992	100.652024	JKR Daerah Kerian
38	T038	29	4.996732	100.652159	JKR Daerah Kerian
39	T039	31	4.996499	100.652280	JKR Daerah Kerian
40	T040	35	4.996243	100.652378	JKR Daerah Kerian
41	T041	35	4.995973	100.652531	JKR Daerah Kerian
42	T042	34	4.995685	100.652681	JKR Daerah Kerian
43	T043	30	4.995409	100.652810	JKR Daerah Kerian
44	T044	32	4.995176	100.652933	JKR Daerah Kerian
45	T045	40	4.994897	100.653013	JKR Daerah Kerian
46	T046	27	4.994539	100.653081	JKR Daerah Kerian
47	T047	42	4.994283	100.653117	JKR Daerah Kerian
48	T048	21	4.993906	100.653162	JKR Daerah Kerian
49	T049	12	4.993718	100.653143	JKR Daerah Kerian
50	T050	28	4.993220	100.653077	JKR Daerah Kerian
51	T051	32	4.993181	100.653185	JKR Daerah Kerian
52	T052	30	4.992920	100.653140	JKR Daerah Kerian
53	T053	39	4.992638	100.653085	JKR Daerah Kerian
54	T054	33	4.992353	100.653028	JKR Daerah Kerian
55	T055	36	4.992011	100.652949	JKR Daerah Kerian
56	T056	34	4.991716	100.652892	JKR Daerah Kerian
57	T057	33	4.991397	100.652814	JKR Daerah Kerian
58	T058	38	4.991092	100.652744	JKR Daerah Kerian
59	T059	36	4.990800	100.652675	JKR Daerah Kerian
60	T060	34	4.990465	100.652593	JKR Daerah Kerian
61	T061	35	4.990161	100.652525	JKR Daerah Kerian
62	T062	32	4.989853	100.652444	JKR Daerah Kerian
63	T063	39	4.989559	100.652362	JKR Daerah Kerian
64	T064	32	4.989242	100.652281	JKR Daerah Kerian
65	T065	35	4.988965	100.652202	JKR Daerah Kerian
66	T066	39	4.988612	100.652104	JKR Daerah Kerian
67	T067	40	4.988345	100.652032	JKR Daerah Kerian
68	T068	33	4.988035	100.651947	JKR Daerah Kerian
69	T069	29	4.987704	100.651843	JKR Daerah Kerian
70	T070	34	4.987387	100.651763	JKR Daerah Kerian
71	T071	34	4.987116	100.651699	JKR Daerah Kerian
72	T072	33	4.986804	100.651665	JKR Daerah Kerian
73	T073	33	4.986479	100.651640	JKR Daerah Kerian
74	T074	33	4.986162	100.651610	JKR Daerah Kerian
75	T075	35	4.985868	100.651592	JKR Daerah Kerian



PROJEK PENYEDIAAN DAN PENYELENGGARAAN POINT OF PRESENCE (POP) FASA 2: HAB INFRASTRUKTUR GENTIAN OPTIK BERHAMPIRAN DENGAN SEKOLAH, KAWASAN PERINDUSTRIAN, PREMIS KERAJAAN DAN KOMUNITI SEKITARNYA OLEH KEMENTERIAN KOMUNIKASI MALAYSIA - ZON UTARA (KKMM.400-11/17/132(1))

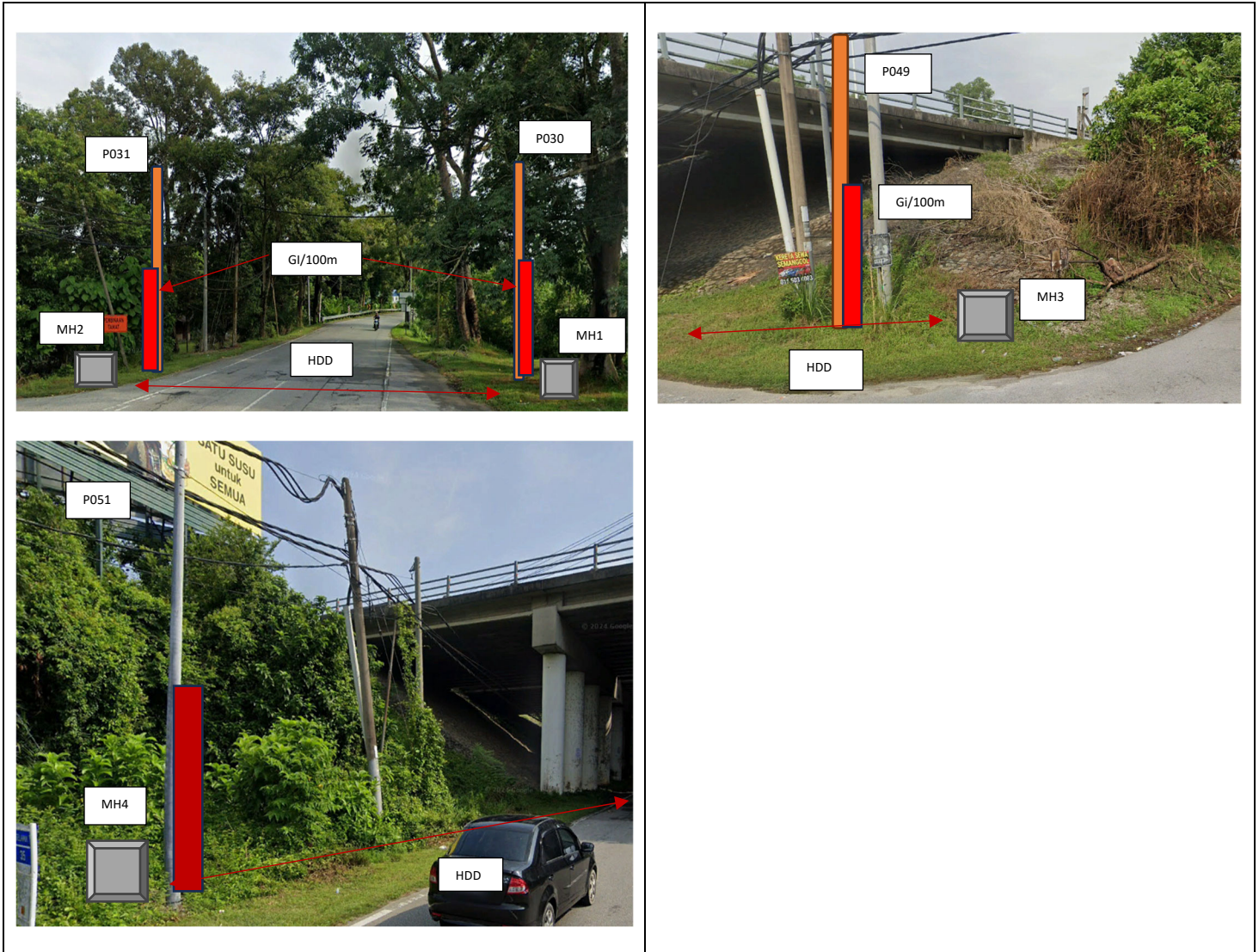


SEGALA DELIMA (M) SDN. BHD.

Existing Pole Coordinate

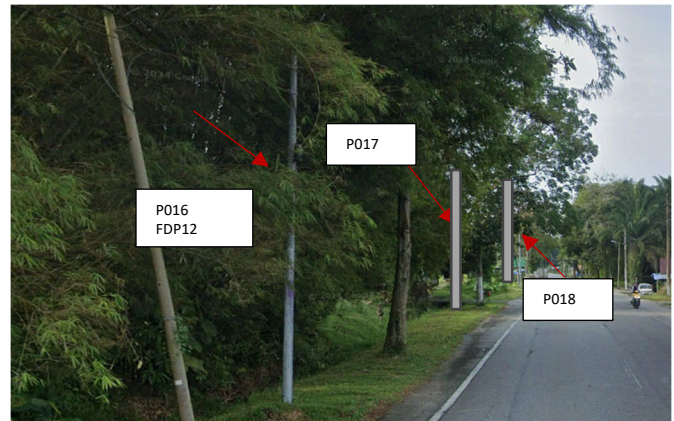
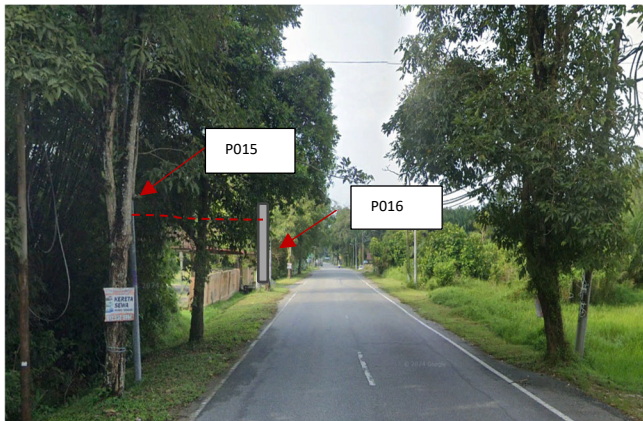
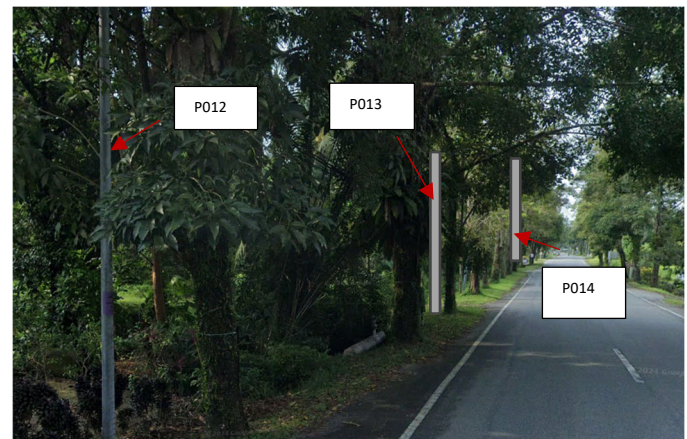
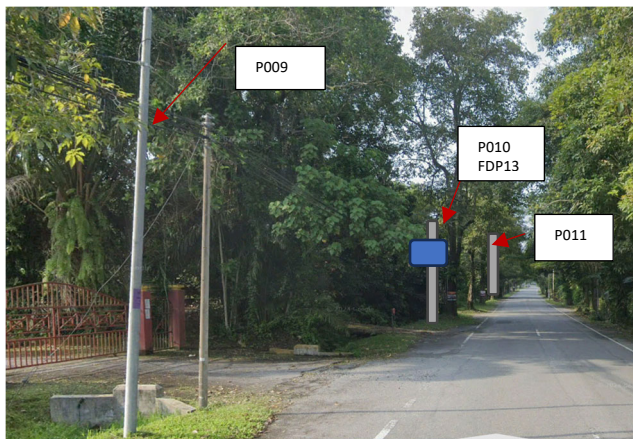
No.	Pole Number	Distance (m)	Latitude	Longitude	Local Authority
76	T076	40	4.985553	100.651573	JKR Daerah Kerian
77	T077	34	4.985248	100.651577	JKR Daerah Kerian
78	T078	37	4.984904	100.651563	JKR Daerah Kerian
79	T079	25	4.984594	100.651550	JKR Daerah Kerian

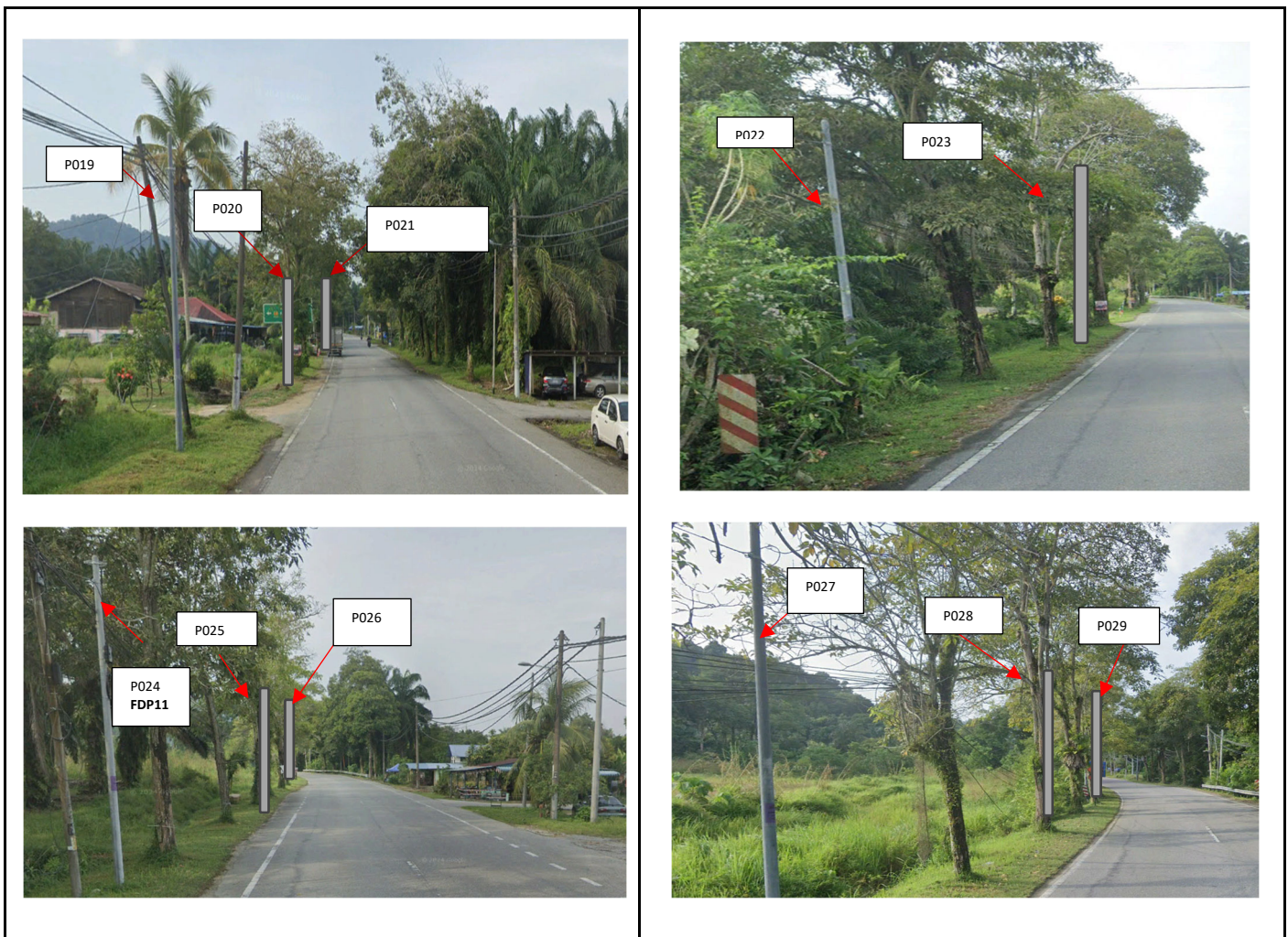
5.0 SITE PHOTOS - PROPOSED HDD AND NEW MANHOLE

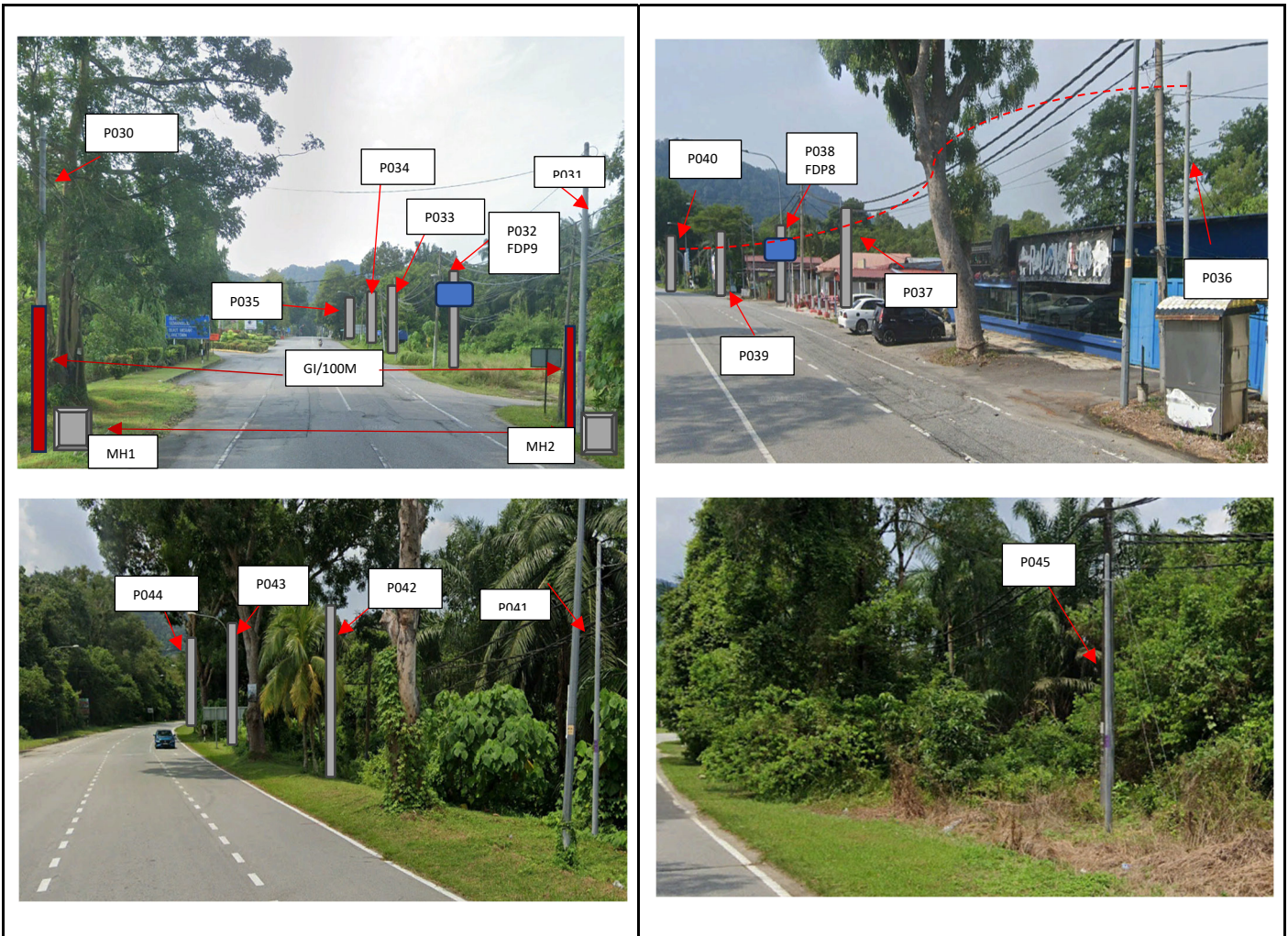


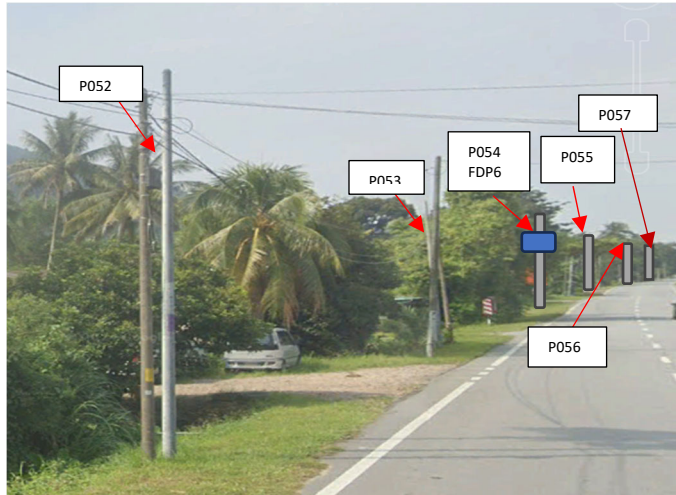
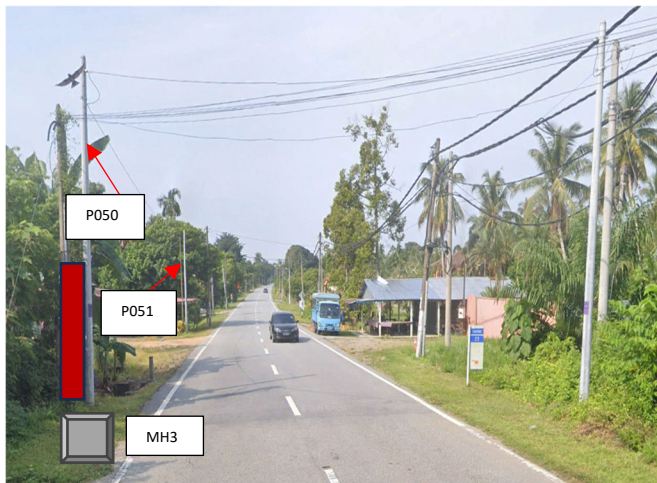
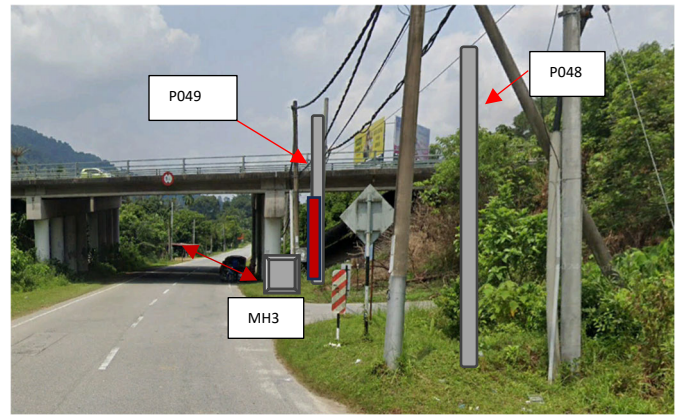
6.0 SITE PHOTOS - PROPOSED NEW POLE



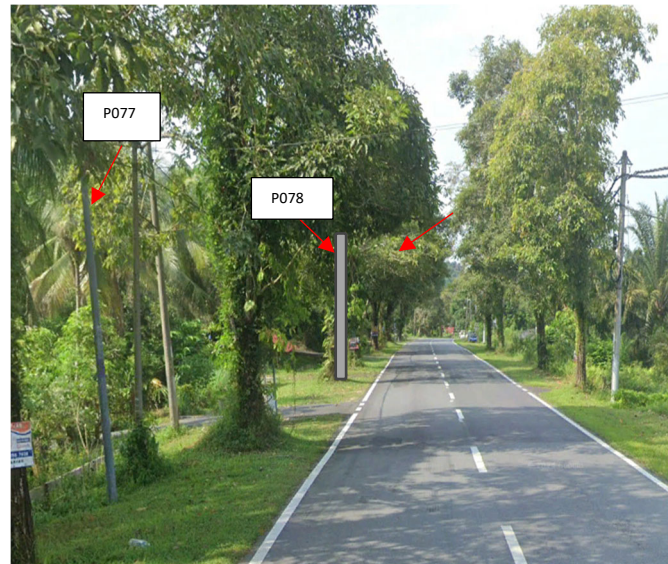
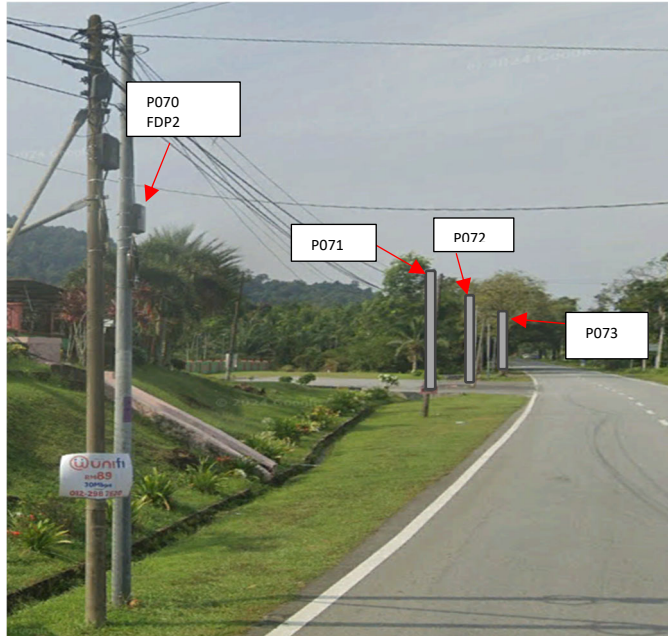




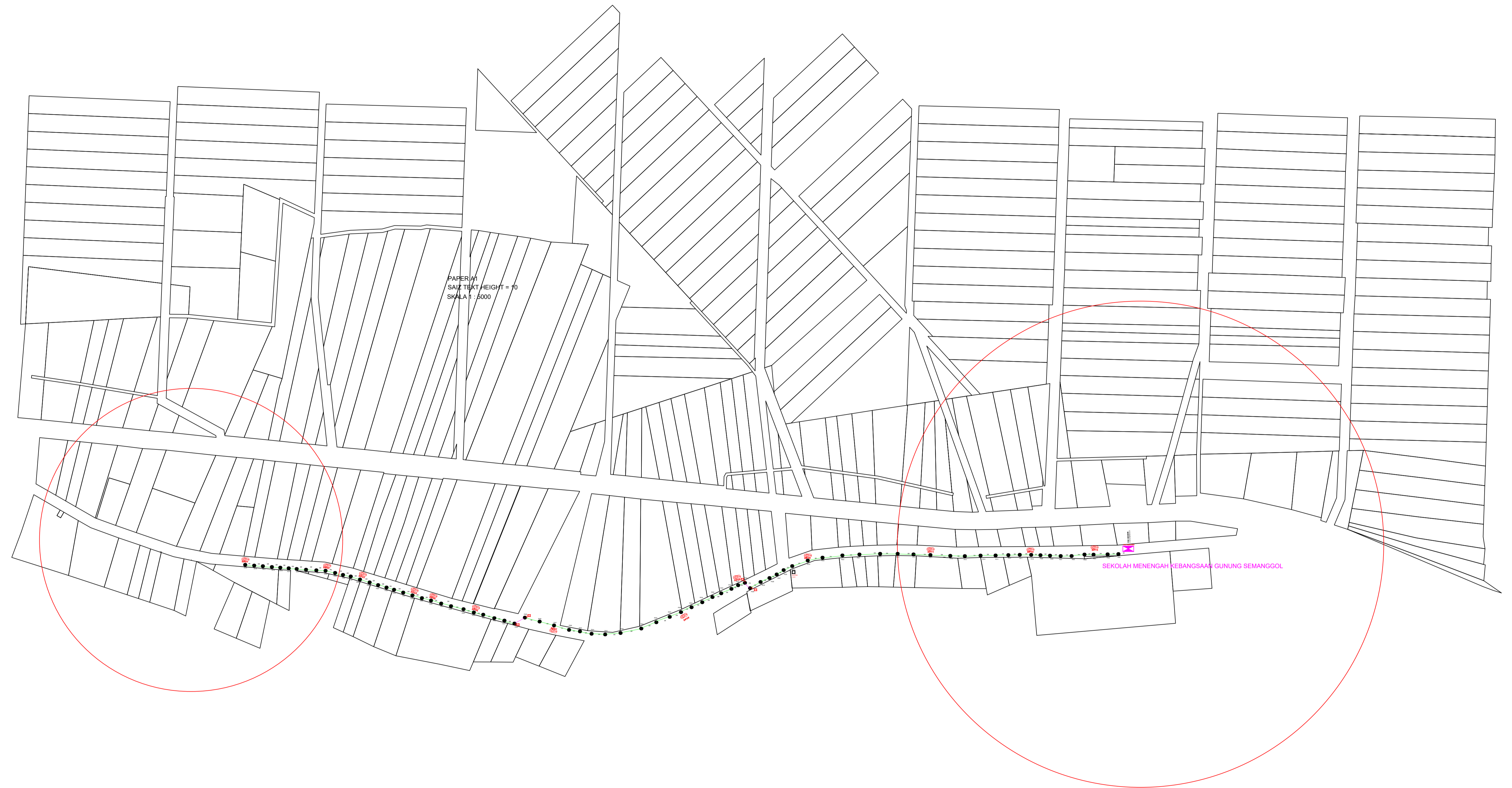








NO	LOCAL COUNCIL / AUTHORITY	REMARK
1	Majlis Daerah Kerian	-
2	JKR Daerah Kerian	2771




	12C FOC		Installed 1:4 / 1:8 / 1:32 splitter		Installed Pole (9m)		Suspension		New Manhole (PIT)		Micro-Trenching (Meter)		MH NO.
	24C FOC	2681	Installed Patch Cord		Installed Pole (7.5M)		Tension		New Manhole(JRC7)		Temporary Infra (Meter)		Existing TNB Pole NO.
	48C FOC		FDC	1	Installed Pole (6.7M)		Pole Ring		FDP Boundary		Loop / Coil (Meter)		New Pole NO.
	96C FOC		Closure		Existing Pole	79		13	HDD (Meter)		Active Outdoor Cabinet		Closure NO.
	144C FOC		Existing Closure	1	Installed Riser	4			Open Cut (Meter)		FDC NO.		FDP NO.

ACTUAL HOMEPASS :


KEY PLAN:

PROJECT OWNER:




KEMENTERIAN KOMUNIKASI DAN DIGITAL

MAIN CONTRACTOR:



187475-V



SUB-CONTRACTOR:



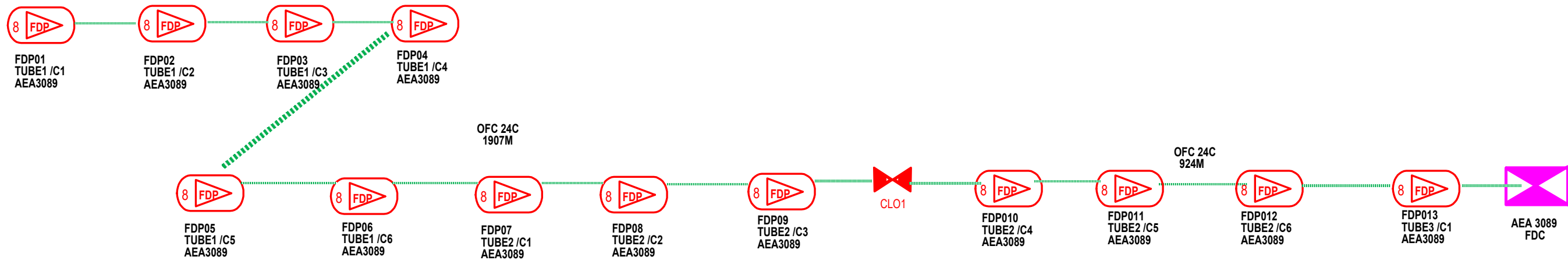
SEGALA DELIMA (M) SDN. BHD.

PROJECT TITLE:
AEA3089
SEKOLAH MENENGAH KEBANGSAAN
GUNUNG SEMANGGOL

DRAWING TITLE:
AEA3089
SEKOLAH MENENGAH KEBANGSAAN
GUNUNG SEMANGGOL

PROJECT PHASE:

Design By : (Contractor)	Date :
Drawn By : (Contractor)	Scale : 1 : 5000
Checked By : (Contractor)	Job Number :
DRAWING NUMBER :	Sheet : /
	Size :



CABLE 24 CORE(CLOSURE 1)			
FDP1 - FDP13			
IN (24 Core)DP10-DP13		OUT (24 Core DP1-DP9)	
TUBE	CORE		
BLUE		BLUE	1-6
ORANGE	10-12	ORANGE	7-11
GREEN	13	GREEN	
BROWN		BROWN	

LEGEND								
12C FOC	Installed 1:4 splitter in FDC	Installed Pole (9m)	C7	New Manhole(JRC7)	TS / TB	Tension Small / Tension Big	MH1	MH NO.
24C FOC	FDP with (1:8) splitter	Installed Riser	#	House Number	TKS-1	Existing Manhole	TKS-1	Existing TNB Pole NO.
48C FOC	Closure	Suspension Big	SB	Existing TNB Pole	C01	Closure NO.	P001	New Pole NO.
96C FOC	New Manhole (PIT)	Suspension Small	SS	LOOP	FDP1	FDP NO.	(A)	SEE A-A in this page (A)
144C FOC	Installed Pole (7.5M)	FDC		FDP Boundary	FDC	FDC NO.	(A)	SEE SHEET XXX (A)

KEY PLAN :	PROJECT OWNER :	MAIN CONTRACTOR :	SUB-CONTRACTOR :	PROJECT TITLE:	DRAWING TITLE:	Design By : M.Helmi	Date : 11/11/2024
				POINT OF PRESENCE 2 (POP 2)	SLD AEA3089 SEKOLAH MENENGAH KEBANGSAAN GUNUNG SEMANGGOL	Drawn By : M.Helmi	Scale : N.T.S
					PROJECT PHASE: PROJECT PHASE	Checked By :	Job Number : AEA 3089
						DRAWING NUMBER :	Sheet : DRAWING_NUMBER SHEET
							Size : A3