

## TECHNICAL PROPOSAL POP2 - AEB0038 SEKOLAH MENENGAH KEBANGSAAN CHOONG HUA (D-SIDE)

Company Name	:	STEADCOM SDN BHD
Company Address	:	11-3, Jalan Puteri 2/6, Bandar Puteri, 47100 Puchong, Selangor
Prepared By	:	Fariz Aizat
Date	:	20/12/2024



POINT A

POINT B

### Starting Point

Site / Boundary Name	:	SEKOLAH MENENGAH KEBANGSAAN CHOONG HUA
Address	:	Jalan Sekolah, 35500 Bidor, Perak.
District	:	Bidor
Postcode	:	35500
State	:	Perak
GPS Coordinate	:	4.111818, 101.286341
LRD	:	A

### End Point

Site / Boundary Name	:	KAMPUNG DATO KAMARUDIN
Address	:	Jalan Teluk Intan, Kampung Dato Kamarudin
District	:	Bidor
Postcode	:	35500
State	:	Perak
GPS Coordinate	:	4.111804, 101.278296
LRD	:	B

### Work Summary

No	Proposed Distance and Method	Unit	Qty
1	Horizontal Directional Drilling (HDD)	m	<b>410</b>
2	Carriage Way Open trench (CW)	m	<b>0</b>
3	Grass Verge Open Trenching (GV)	m	<b>6</b>
4	Micro trenching (MT)	m	<b>6</b>
	Total		<b>422</b>

	Other Information	Unit	Qty
1	Proposed Manhole	EA	<b>4</b>
2	Proposed Pole	EA	<b>108</b>
3	Joint Closure	EA	<b>2</b>
4	Estimated time required for completion	days	<b>30</b>

### Local Authority Summary

1. Daerah Tapah

Bil	Items	Owner	Quantity	Distance(m)
1	HDD	JKR	2	200m
		Majlis	2	210m
		Estate / Private Land	-	-
2	New Pole	JKR	1	3m
		Majlis	107	3443m
		Estate / Private Land	-	-
3	Existing TNB Pole	JKR	-	-
		Majlis	-	-
		Estate / Private Land	-	-
Total				3856m

**Site Plan – KMZ (Overview site area)**

**Proposed FDP and Closure**



**Proposed New Pole**



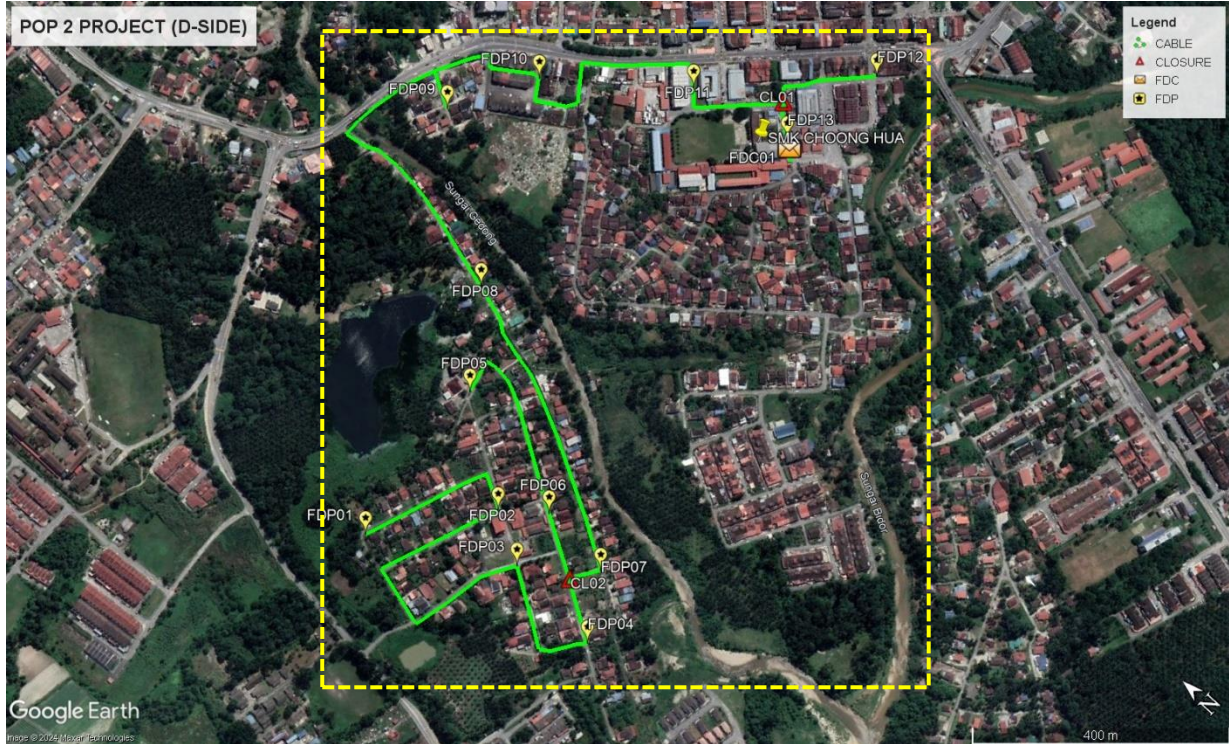
**Site Plan – KMZ Routing (All Local Authority)**



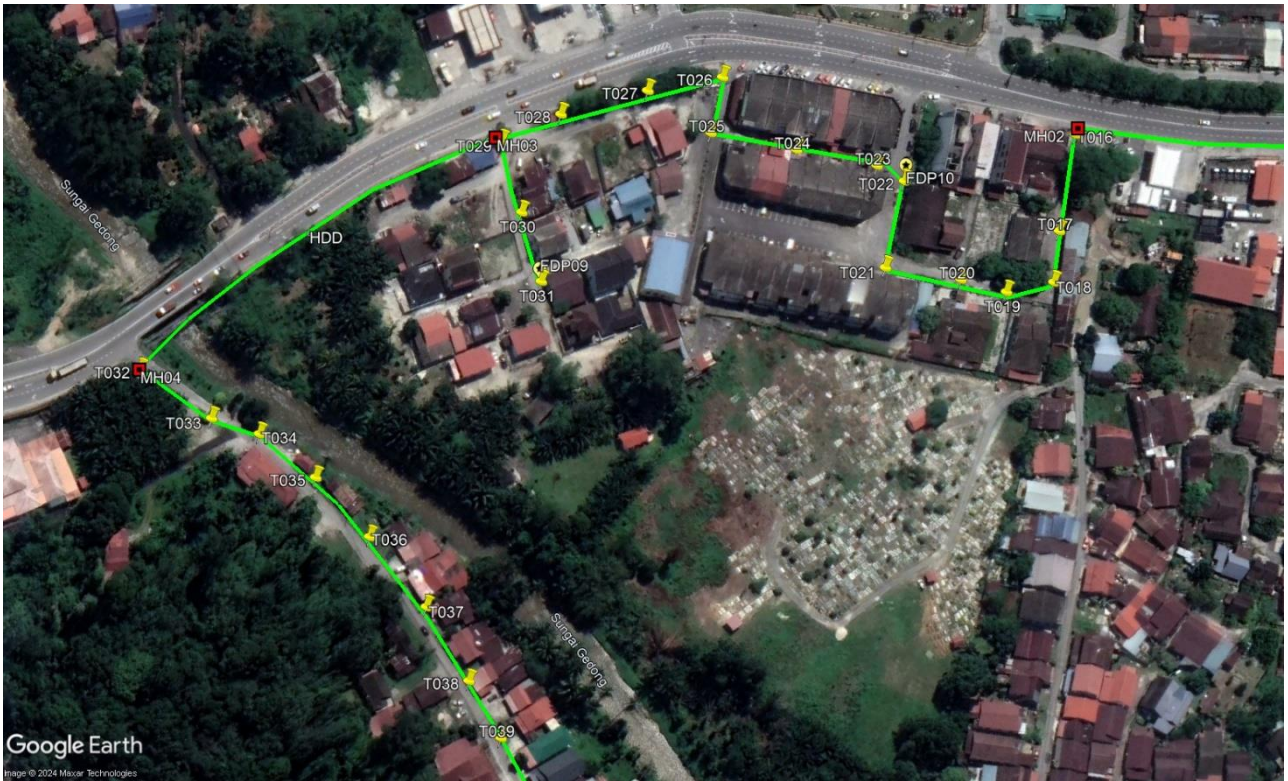
**Green Colour – JKR Batang Padang**  
**Red Colour – Majlis Daerah Tapah**

Site Plan – KMZ Routing (All site area)

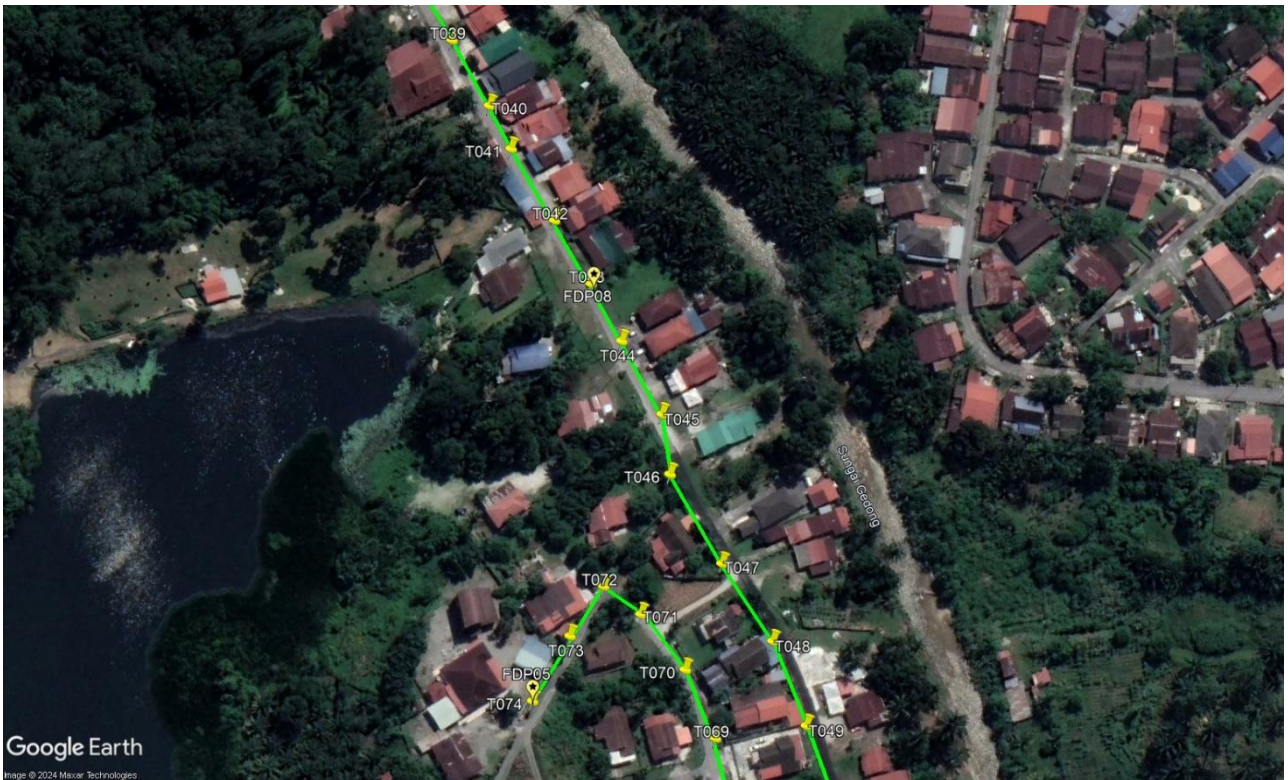
Route 1



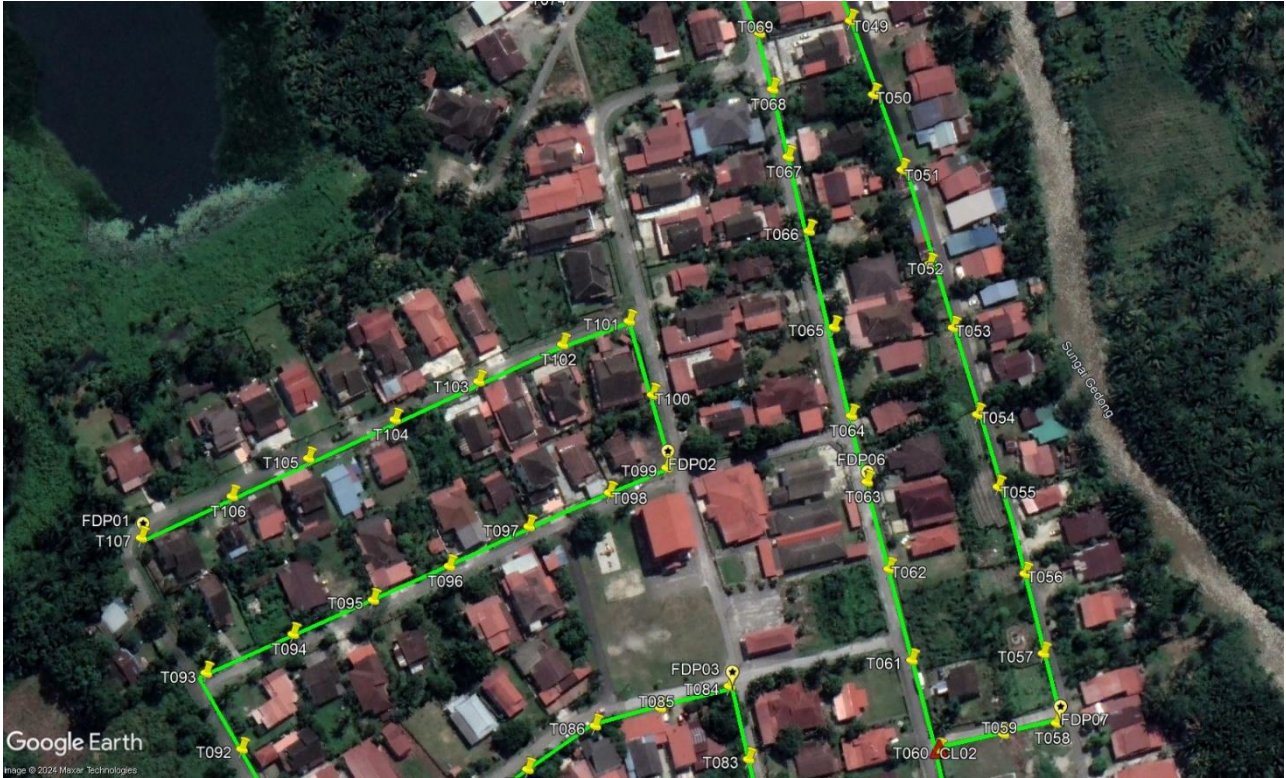
Route 1.1



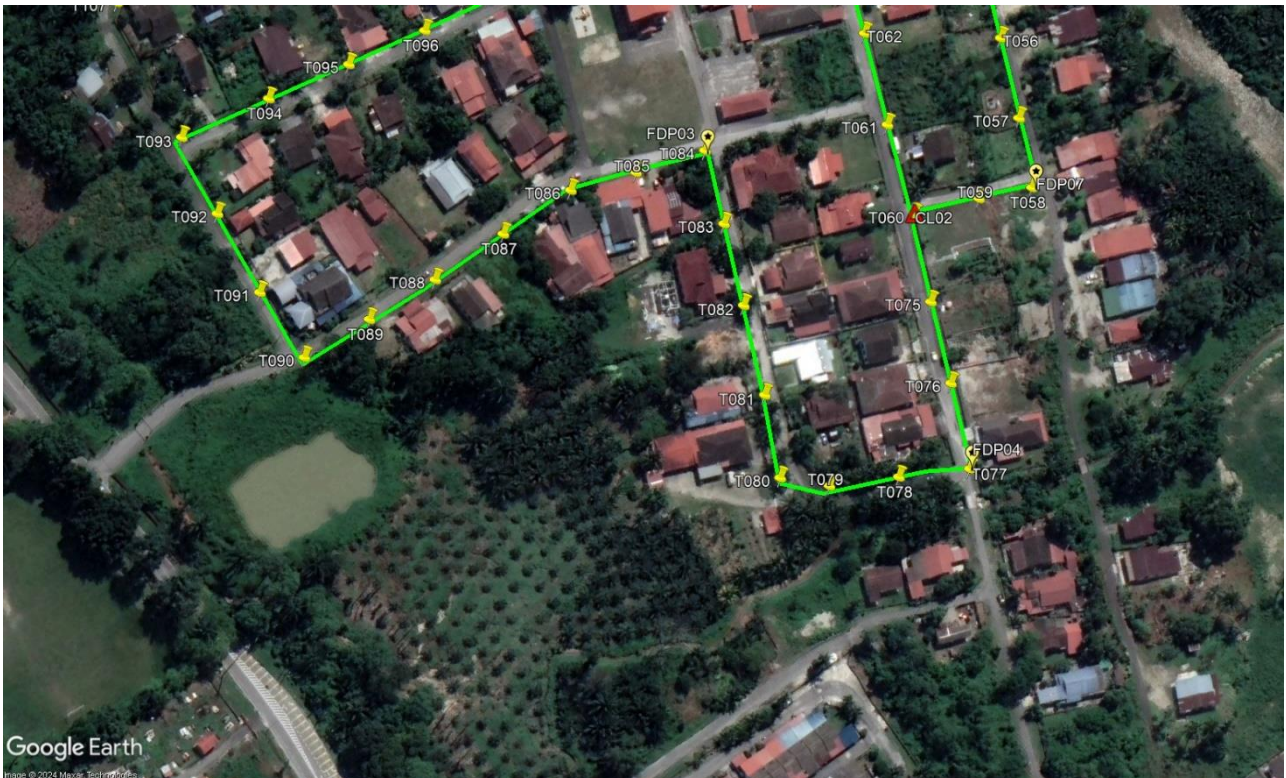
**Route 1.2**



**Route 1.3**

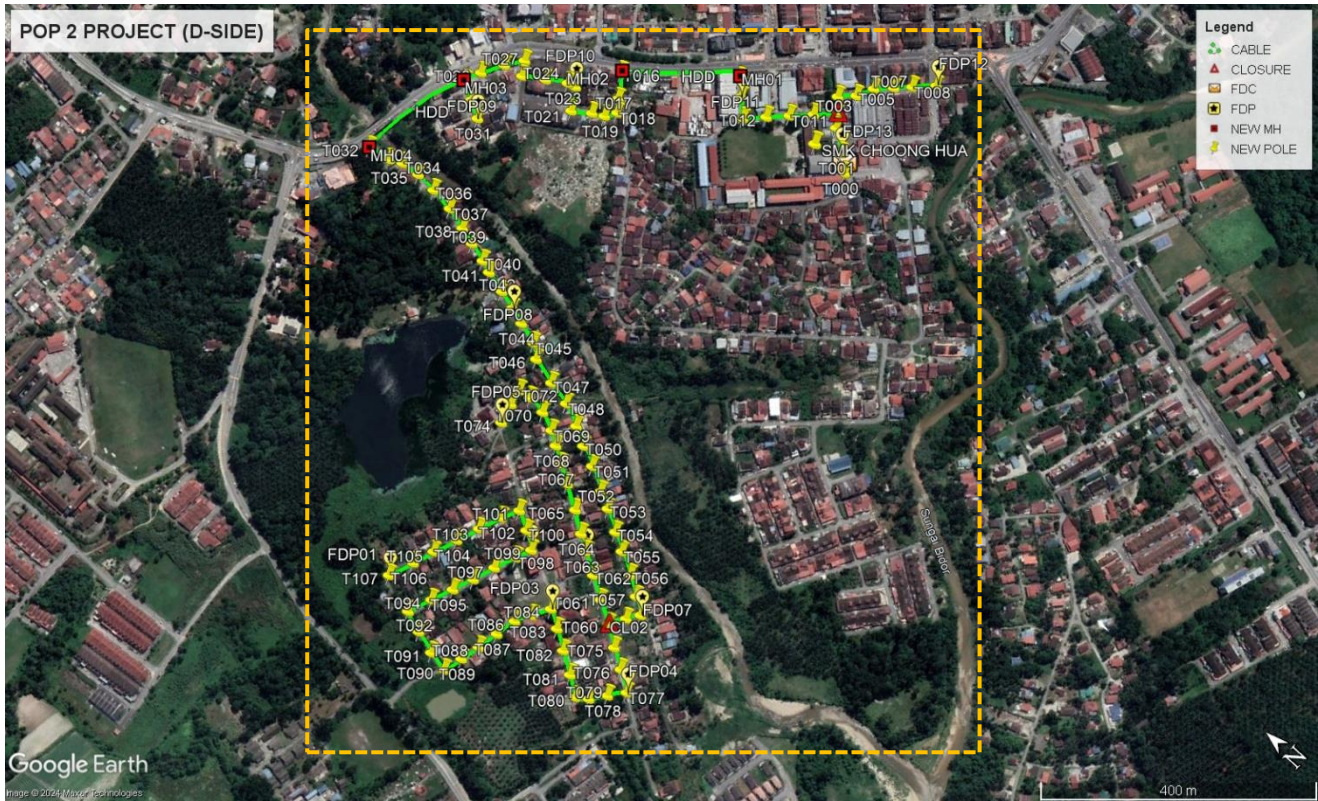


**Route 1.4**



**Route 1.5**

Site Plan – KMZ Routing (Proposed new Pole)



**Proposed New Pole Lat & Long Table**

No.	Label	Pole & Manhole ID	Latitude	Longitude	Local Authority
1	OLT / FDC	T000	4.110952	101.286131	MAJLIS DAERAH TAPAH
2	FDP01	T107	4.111804	101.278296	MAJLIS DAERAH TAPAH
3	FDP02	T099	4.110655	101.279797	MAJLIS DAERAH TAPAH
4	FDP03	T084	4.10994	101.279381	MAJLIS DAERAH TAPAH
5	FDP04	T077	4.108483	101.279265	MAJLIS DAERAH TAPAH
6	FDP05	T074	4.112052	101.280741	MAJLIS DAERAH TAPAH
7	FDP06	T063	4.110056	101.280240	MAJLIS DAERAH TAPAH
8	FDP07	T058	4.109032	101.280132	MAJLIS DAERAH TAPAH
9	FDP08	T043	4.112969	101.281963	MAJLIS DAERAH TAPAH
10	FDP09	T031	4.114971	101.283473	MAJLIS DAERAH TAPAH
11	FDP10	T022	4.114313	101.284652	MAJLIS DAERAH TAPAH
12	FDP11	T014	4.11262	101.286014	MAJLIS DAERAH TAPAH
13	FDP12	T009	4.110851	101.287853	MAJLIS DAERAH TAPAH
14	FDP13	T001	4.111184	101.286325	MAJLIS DAERAH TAPAH
15	CL01	T003	4.111558	101.286711	MAJLIS DAERAH TAPAH
16	CL02	T060	4.109261	101.279768	MAJLIS DAERAH TAPAH

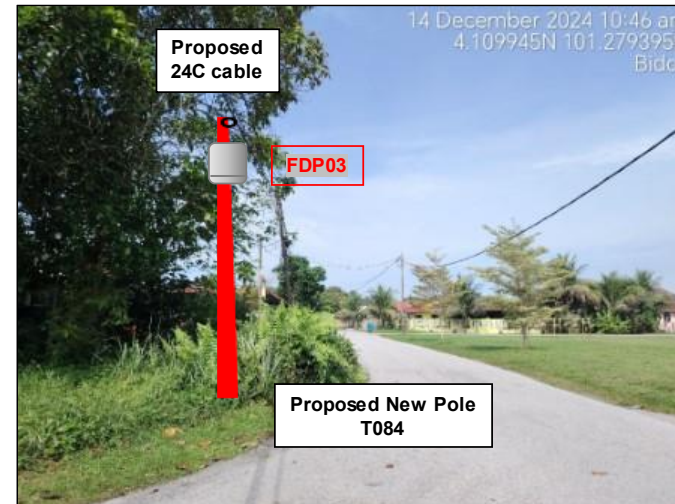
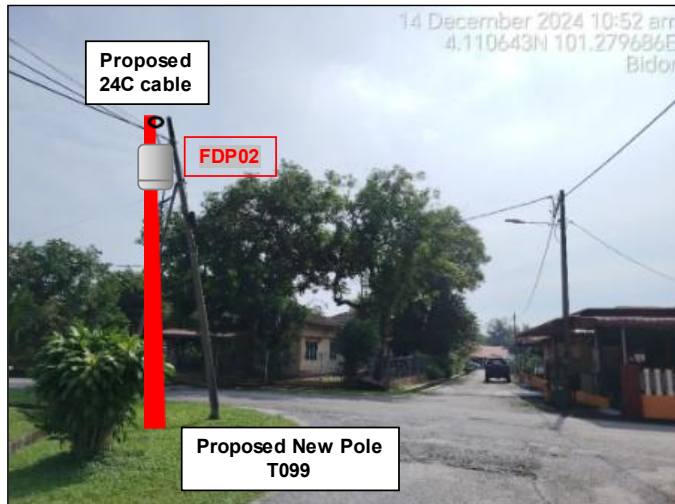
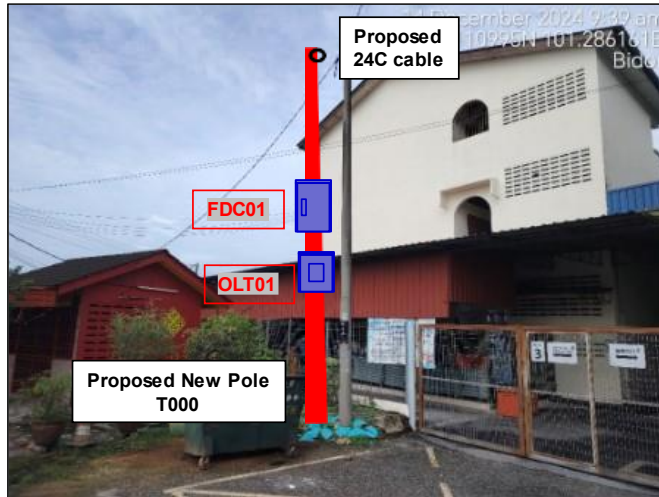
**Overall Pole (Proposed New)**

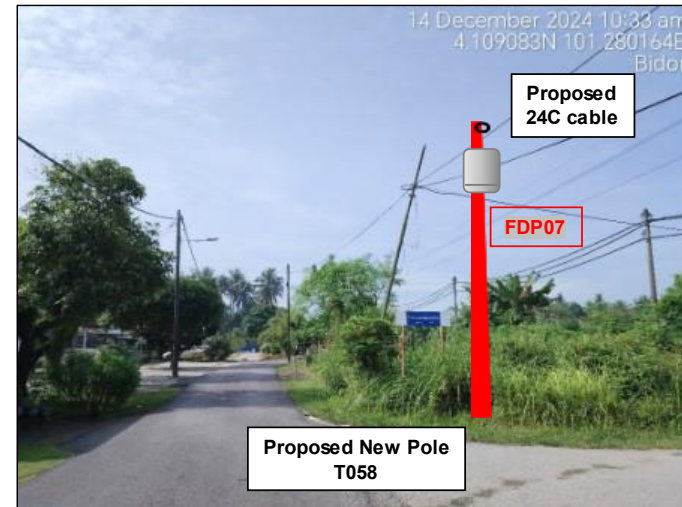
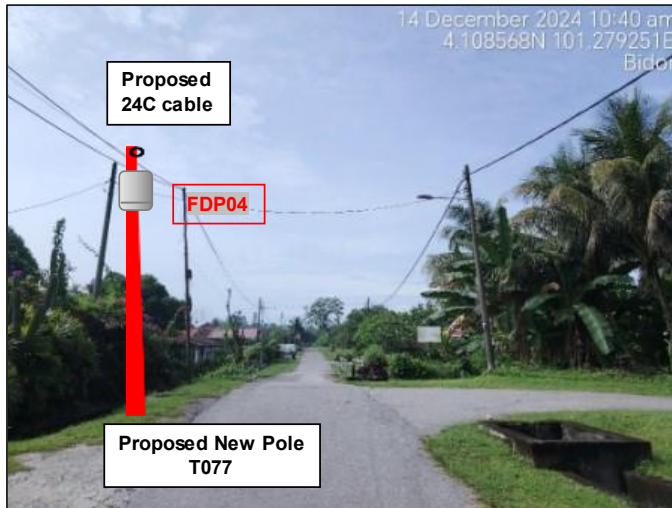
No.	Pole & Manhole ID	Distance	Latitude	Longitude	Local Authority
1	T000	0	4.110952	101.286131	MAJLIS DAERAH TAPAH
2	T001	35	4.111184	101.286325	MAJLIS DAERAH TAPAH
3	T002	40	4.111443	101.286562	MAJLIS DAERAH TAPAH
4	T003	25	4.111558	101.286711	MAJLIS DAERAH TAPAH
5	T004	25	4.11168	101.286869	MAJLIS DAERAH TAPAH
6	T005	30	4.111534	101.287031	MAJLIS DAERAH TAPAH
7	T006	30	4.111425	101.287271	MAJLIS DAERAH TAPAH
8	T007	35	4.111241	101.287457	MAJLIS DAERAH TAPAH
9	T008	30	4.111071	101.287628	MAJLIS DAERAH TAPAH
10	T009	35	4.110851	101.287853	MAJLIS DAERAH TAPAH
11	T010	35	4.111773	101.286473	MAJLIS DAERAH TAPAH
12	T011	35	4.111993	101.286260	MAJLIS DAERAH TAPAH
13	T012	35	4.112199	101.286044	MAJLIS DAERAH TAPAH
14	T013	35	4.112416	101.285821	MAJLIS DAERAH TAPAH
15	T014	35	4.11262	101.286014	MAJLIS DAERAH TAPAH
16	T015	35	4.112806	101.286190	MAJLIS DAERAH TAPAH
17	MH01	3	4.11282	101.286203	MAJLIS DAERAH TAPAH
18	MH02	200	4.113991	101.285213	JKR BATANG PADANG
19	T016	3	4.113999	101.285201	JKR BATANG PADANG
20	T017	40	4.113789	101.284920	MAJLIS DAERAH TAPAH
21	T018	30	4.113665	101.284745	MAJLIS DAERAH TAPAH
22	T019	25	4.113768	101.284613	MAJLIS DAERAH TAPAH
23	T020	25	4.113896	101.284531	MAJLIS DAERAH TAPAH
24	T021	35	4.11413	101.284369	MAJLIS DAERAH TAPAH
25	T022	40	4.114313	101.284652	MAJLIS DAERAH TAPAH
26	T023	15	4.114421	101.284623	MAJLIS DAERAH TAPAH
27	T024	35	4.114663	101.284460	MAJLIS DAERAH TAPAH
28	T025	35	4.114922	101.284287	MAJLIS DAERAH TAPAH
29	T026	25	4.115019	101.284443	MAJLIS DAERAH TAPAH
30	T027	30	4.115187	101.284235	MAJLIS DAERAH TAPAH
31	T028	35	4.115336	101.283944	MAJLIS DAERAH TAPAH
32	T029	30	4.11542	101.283732	MAJLIS DAERAH TAPAH
33	T030	35	4.115209	101.283592	MAJLIS DAERAH TAPAH
34	T031	30	4.114971	101.283473	MAJLIS DAERAH TAPAH
35	MH03	3	4.115431	101.283742	MAJLIS DAERAH TAPAH
36	MH04	210	4.115775	101.282248	MAJLIS DAERAH TAPAH
37	T032	3	4.115765	101.282251	MAJLIS DAERAH TAPAH
38	T033	40	4.115463	101.282293	MAJLIS DAERAH TAPAH
39	T034	25	4.115303	101.282389	MAJLIS DAERAH TAPAH
40	T035	30	4.115048	101.282394	MAJLIS DAERAH TAPAH
41	T036	35	4.114765	101.282390	MAJLIS DAERAH TAPAH

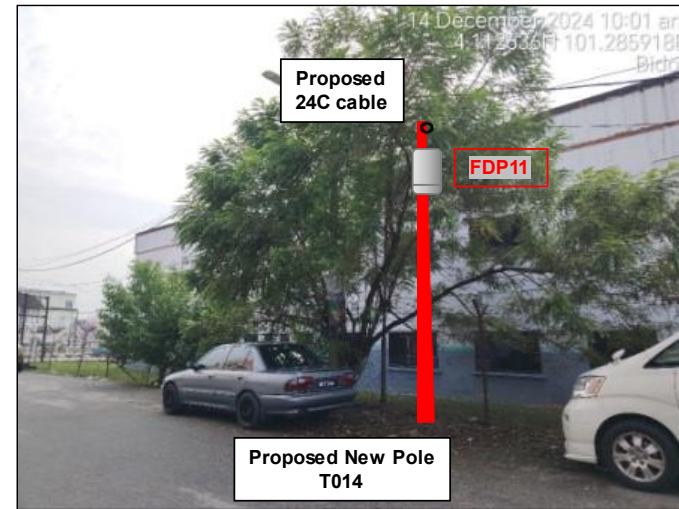
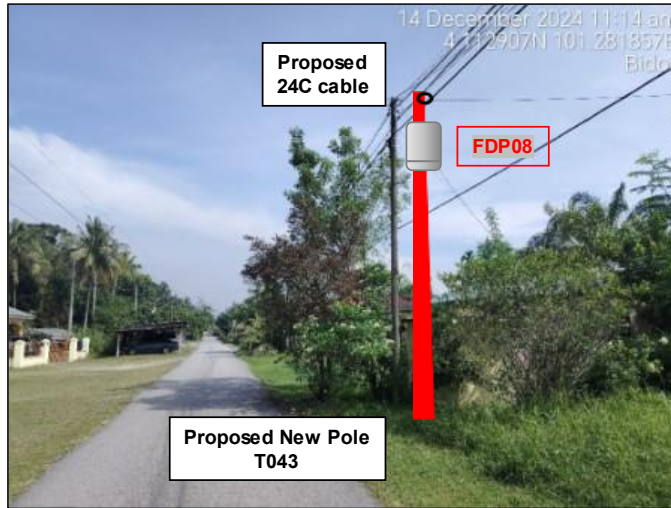
42	T037	35	4.114452	101.282344	MAJLIS DAERAH TAPAH
43	T038	35	4.114168	101.282279	MAJLIS DAERAH TAPAH
44	T039	30	4.113928	101.282218	MAJLIS DAERAH TAPAH
45	T040	30	4.113671	101.282157	MAJLIS DAERAH TAPAH
46	T041	20	4.113509	101.282103	MAJLIS DAERAH TAPAH
47	T042	35	4.11322	101.282031	MAJLIS DAERAH TAPAH
48	T043	30	4.112969	101.281963	MAJLIS DAERAH TAPAH
49	T044	30	4.112747	101.281896	MAJLIS DAERAH TAPAH
50	T045	35	4.112462	101.281812	MAJLIS DAERAH TAPAH
51	T046	30	4.112291	101.281681	MAJLIS DAERAH TAPAH
52	T047	40	4.111936	101.281586	MAJLIS DAERAH TAPAH
53	T048	40	4.111613	101.281518	MAJLIS DAERAH TAPAH
54	T049	35	4.111316	101.281389	MAJLIS DAERAH TAPAH
55	T050	35	4.111072	101.281261	MAJLIS DAERAH TAPAH
56	T051	30	4.110811	101.281143	MAJLIS DAERAH TAPAH
57	T052	40	4.110504	101.280972	MAJLIS DAERAH TAPAH
58	T053	30	4.110285	101.280872	MAJLIS DAERAH TAPAH
59	T054	35	4.110006	101.280714	MAJLIS DAERAH TAPAH
60	T055	35	4.109772	101.280583	MAJLIS DAERAH TAPAH
61	T056	35	4.109486	101.280431	MAJLIS DAERAH TAPAH
62	T057	35	4.109239	101.280275	MAJLIS DAERAH TAPAH
63	T058	30	4.109032	101.280132	MAJLIS DAERAH TAPAH
64	T059	25	4.109138	101.279971	MAJLIS DAERAH TAPAH
65	T060	30	4.109261	101.279768	MAJLIS DAERAH TAPAH
66	T061	35	4.109554	101.279927	MAJLIS DAERAH TAPAH
67	T062	40	4.109841	101.280100	MAJLIS DAERAH TAPAH
68	T063	35	4.110056	101.280240	MAJLIS DAERAH TAPAH
69	T064	30	4.110321	101.280393	MAJLIS DAERAH TAPAH
70	T065	40	4.110587	101.280573	MAJLIS DAERAH TAPAH
71	T066	40	4.110892	101.280753	MAJLIS DAERAH TAPAH
72	T067	30	4.111131	101.280888	MAJLIS DAERAH TAPAH
73	T068	30	4.11134	101.281020	MAJLIS DAERAH TAPAH
74	T069	25	4.111514	101.281129	MAJLIS DAERAH TAPAH
75	T070	30	4.111762	101.281226	MAJLIS DAERAH TAPAH
76	T071	30	4.112013	101.281254	MAJLIS DAERAH TAPAH
77	T072	20	4.112177	101.281231	MAJLIS DAERAH TAPAH
78	T073	25	4.112137	101.281021	MAJLIS DAERAH TAPAH
79	T074	35	4.112052	101.280741	MAJLIS DAERAH TAPAH
80	T075	35	4.109	101.279589	MAJLIS DAERAH TAPAH
81	T076	35	4.108745	101.279434	MAJLIS DAERAH TAPAH
82	T077	35	4.108483	101.279265	MAJLIS DAERAH TAPAH
83	T078	30	4.108641	101.279066	MAJLIS DAERAH TAPAH
84	T079	30	4.108787	101.278838	MAJLIS DAERAH TAPAH
85	T080	25	4.108938	101.278765	MAJLIS DAERAH TAPAH
86	T081	35	4.109196	101.278922	MAJLIS DAERAH TAPAH

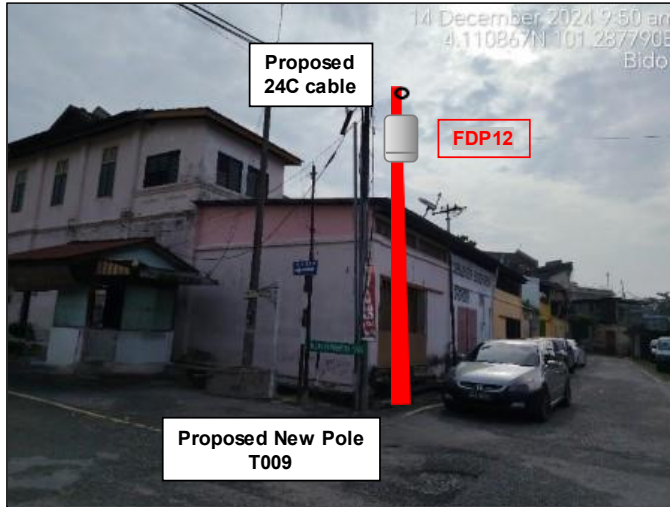
87	T082	40	4.109465	101.279093	MAJLIS DAERAH TAPAH
88	T083	35	4.109721	101.279249	MAJLIS DAERAH TAPAH
89	T084	35	4.10994	101.279381	MAJLIS DAERAH TAPAH
90	T085	30	4.110068	101.279173	MAJLIS DAERAH TAPAH
91	T086	30	4.110188	101.278964	MAJLIS DAERAH TAPAH
92	T087	30	4.110248	101.278684	MAJLIS DAERAH TAPAH
93	T088	40	4.110289	101.278381	MAJLIS DAERAH TAPAH
94	T089	30	4.110347	101.278119	MAJLIS DAERAH TAPAH
95	T090	30	4.110402	101.277872	MAJLIS DAERAH TAPAH
96	T091	35	4.110715	101.277923	MAJLIS DAERAH TAPAH
97	T092	35	4.11102	101.278015	MAJLIS DAERAH TAPAH
98	T093	35	4.111301	101.278118	MAJLIS DAERAH TAPAH
99	T094	40	4.111179	101.278435	MAJLIS DAERAH TAPAH
100	T095	35	4.111063	101.278723	MAJLIS DAERAH TAPAH
101	T096	35	4.110956	101.279000	MAJLIS DAERAH TAPAH
102	T097	35	4.110855	101.279301	MAJLIS DAERAH TAPAH
103	T098	35	4.110737	101.279589	MAJLIS DAERAH TAPAH
104	T099	25	4.110655	101.279797	MAJLIS DAERAH TAPAH
105	T100	30	4.110848	101.279931	MAJLIS DAERAH TAPAH
106	T101	30	4.111079	101.280045	MAJLIS DAERAH TAPAH
107	T102	30	4.111199	101.279841	MAJLIS DAERAH TAPAH
108	T103	40	4.111333	101.279527	MAJLIS DAERAH TAPAH
109	T104	35	4.111144	101.279227	MAJLIS DAERAH TAPAH
110	T105	40	4.111563	101.278921	MAJLIS DAERAH TAPAH
111	T106	40	4.111679	101.278630	MAJLIS DAERAH TAPAH
112	T107	40	4.111804	101.278296	MAJLIS DAERAH TAPAH

Site Photos – Proposed to install pole









3rd Parties Dependencies

No.	Local Council/ Authority	Remark
1	JKR Batang Padang	
2	Majlis Daerah Tapah	
3		
4		
5		
6		



12C FOC	Installed 1:4 / 1:8 / 1:32 splitter	Installed Pole (9m)	Suspension	108	IB30 New Manhole (PIT)	6	MH1 MH NO.
24C FOC	4031m Installed Patch Cord	Installed Pole (7.5M)	Tension	212	C7 New Manhole(JRC7)	4	TKS-1 Existing TNB Pole NO.
48C FOC	FDC	Installed Pole (6.7M)	Pole Ring	13	FDP Boundary	80	P001 New Pole NO.
96C FOC	Closure	Existing TNB Pole	FDP with (1:8) splitter	13	HDD (Meter)	410	CL01 Closure NO.
144C FOC	Existing Closure	Installed Riser (6M)	Existing Manhole	4	Open Cut (Meter)	6	DP1 FDP NO.

ACTUAL HOMEPASS :

KEY PLAN:

PROJECT OWNER:

MAIN CONTRACTOR:

SUB-CONTRACTOR:

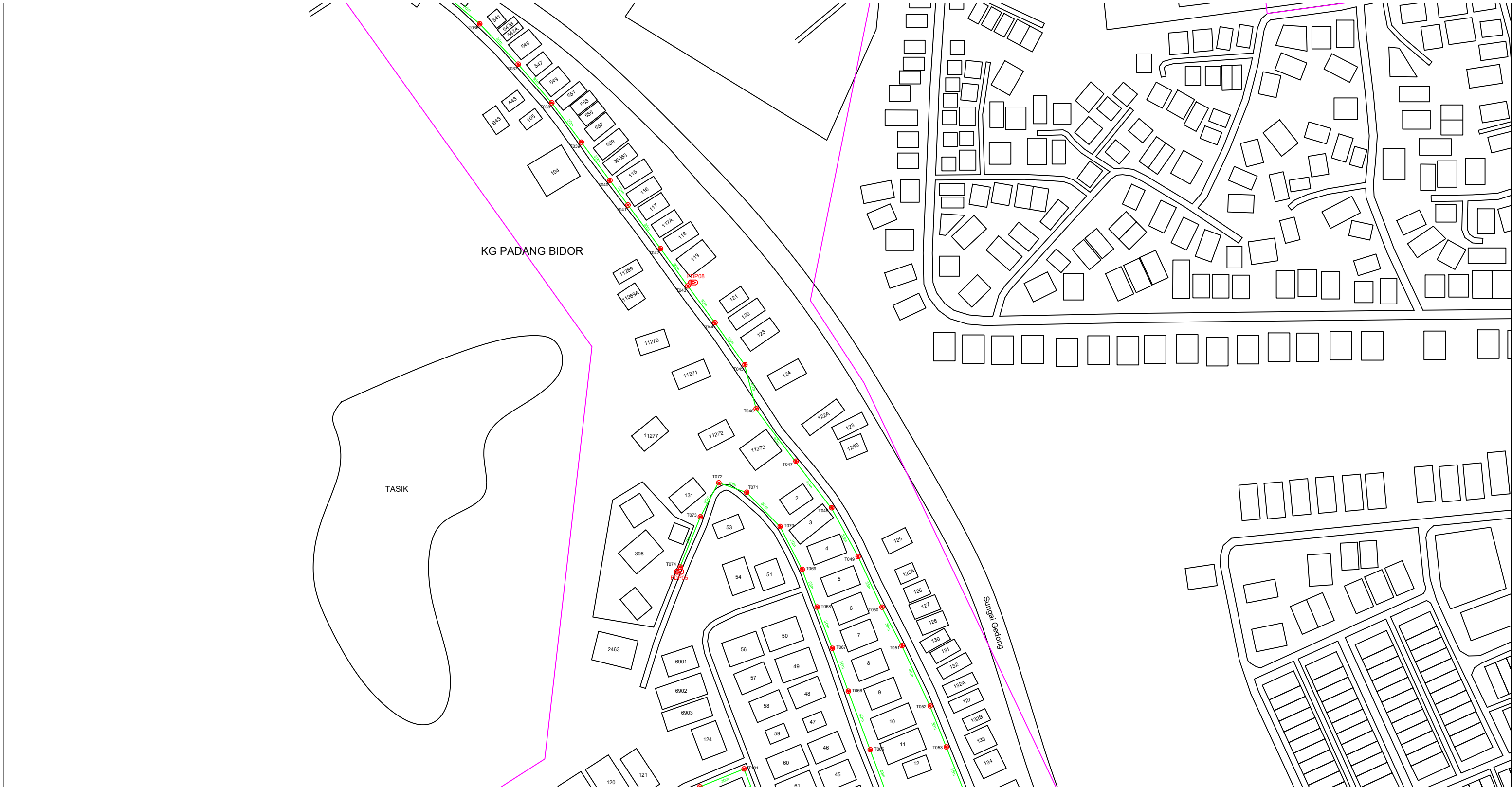
PROJECT TITLE:  
 CONTRACTOR FOR SURVEY, TECHNICAL PROPOSAL AND WAYLEAVE & PERMIT APPROVAL -POP2 PROJECT

DRAWING TITLE:  
 Construction Drawing  
 AEB0038  
 SMK CHOONG HUA

PROJECT PHASE:  
 POP 2

Design By :	Date :	20/12/2024
Drawn By :	Scale :	NTS
Checked By :	Job Number :	JOB/NUMBER
DRAWING NUMBER :		Sheet :
AEB0038-CD-01		1/4
THIS PRINT AND ITS COPYRIGHT ARE THE PROPERTY OF STEADCOM SDN BHD		
		Size : A3






12C FOC	Installed 1:4 / 1:8 / 1:32 splitter	Installed Pole (9m)	Suspension	108	New Manhole (PIT)	Micro-Trenching (Meter)	6	MH1	MH NO.
24C FOC	4031m Installed Patch Cord	Installed Pole (7.5M)	Tension	212	New Manhole(JRC7)	Temporary Infra (Meter)		TKS-1	Existing TNB Pole NO.
48C FOC	FDC	Installed Pole (6.7M)	Pole Ring	13	FDP Boundary	Loop / Coil (Meter)	80	P001	New Pole NO.
96C FOC	Closure	Existing TNB Pole	FDP with (1:8) splitter	13	HDD (Meter)	Active Outdoor Cabinet		CL01	Closure NO.
144C FOC	Existing Closure	Installed Riser (6M)	Existing Manhole	4	Open Cut (Meter)	FDC NO.		DP1	FDP NO.


ACTUAL HOMEPASS :

KEY PLAN:

PROJECT OWNER:

MAIN CONTRACTOR:



A member of OCK Group Berhad

SUB-CONTRACTOR:

PROJECT TITLE:  
 CONTRACTOR FOR SURVEY, TECHNICAL  
 PROPOSAL AND WAYLEAVE & PERMIT APPROVAL  
 -POP2 PROJECT

DRAWING TITLE:  
 Construction Drawing  
 AEB0038  
 SMK CHOONG HUA

PROJECT PHASE:  
 POP 2

Design By :	Date :	20/12/2024
Drawn By :	Scale :	NTS
Checked By :	Job Number :	JOB/NUMBER
DRAWING NUMBER :	Sheet :	
AEB0038-CD-01	3/4	
THIS PRINT AND ITS COPYRIGHT ARE THE PROPERTY OF STEADCOM SDN BHD		Size : A3

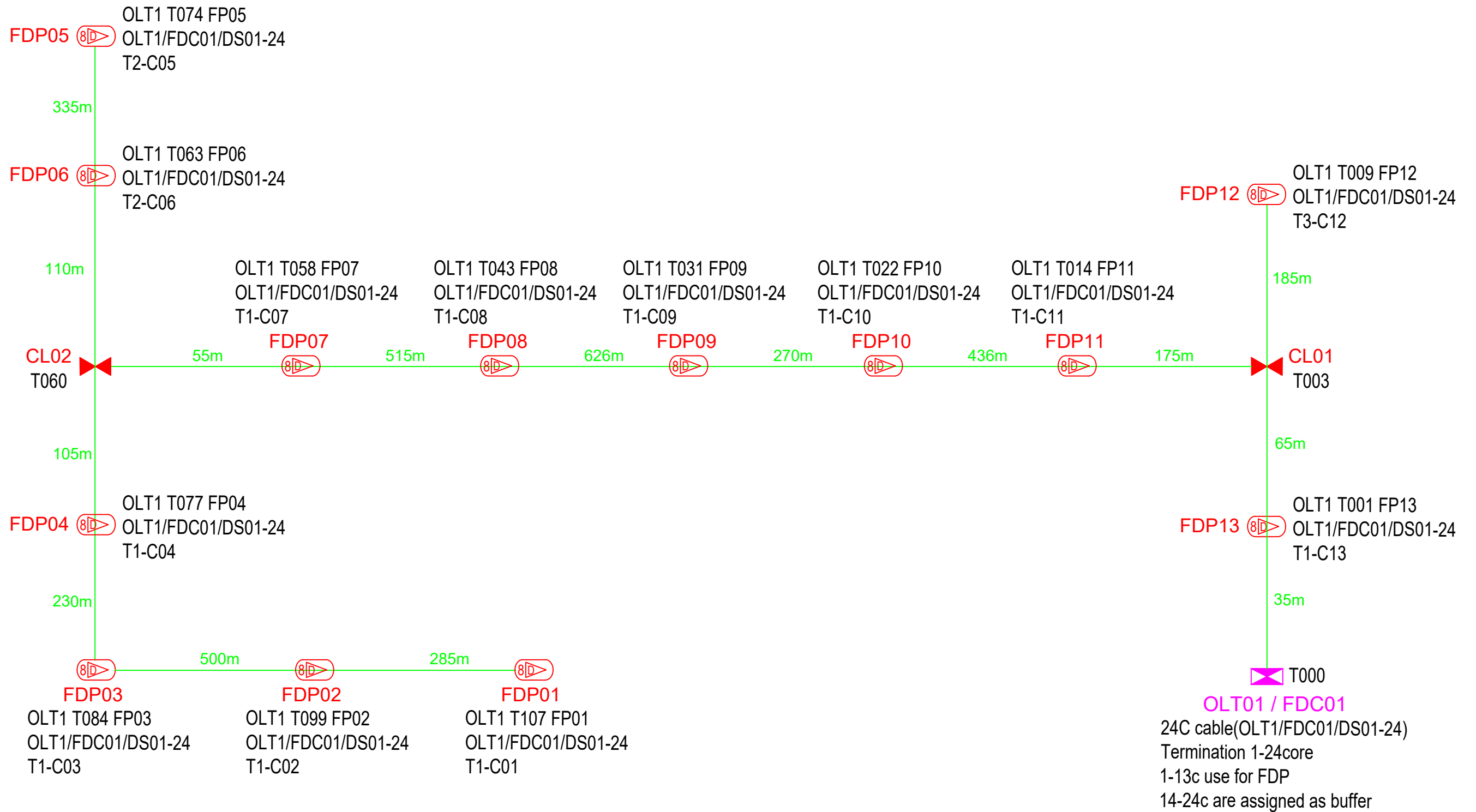


12C FOC	Installed 1:4 / 1:8 / 1:32 splitter	Installed Pole (9m)	Suspension	108	JB30	New Manhole (PIT)	6	MH1	MH NO.
24C FOC	4031m Installed Patch Cord	Installed Pole (7.5M)	Tension	212	C7	New Manhole(JRC7)	4	TKS-1	Existing TNB Pole NO.
48C FOC	FDC	Installed Pole (6.7M)	Pole Ring	13		FDP Boundary		P001	New Pole NO.
96C FOC	Closure	Existing TNB Pole	FDP with (1:8) splitter	13		HDD (Meter)	410	CL01	Closure NO.
144C FOC	Existing Closure	Installed Riser (6M)	Existing Manhole	4		Open Cut (Meter)	6	DP1	FDP NO.
						Micro-Trenching (Meter)	6		
						Temporary Infra (Meter)			
						Loop / Coil (Meter)	80		
						Active Outdoor Cabinet			

ACTUAL HOMEPASS :

KEY PLAN:	PROJECT OWNER:	MAIN CONTRACTOR:	SUB-CONTRACTOR:	PROJECT TITLE:	DRAWING TITLE:	Design By :	Date :
				CONTRACTOR FOR SURVEY, TECHNICAL PROPOSAL AND WAYLEAVE & PERMIT APPROVAL -POP2 PROJECT	Construction Drawing AEB0038 SMK CHOONG HUA	Drawn By :	20/12/2024
					PROJECT PHASE:	Checked By :	Scale :
					POP 2	Job Number :	NTS
						DRAWING NUMBER :	Job Number :
						AEB0038-CD-01	JOB/NUMBER
							Sheet :
							4/4
							Size :
							A3

THIS PRINT AND ITS COPYRIGHT ARE THE PROPERTY OF STEADCOM SDN BHD



12C FOC		Installed 1:4 / 1:8 / 1:32 splitter		Installed Pole (9m)		Suspension	108	New Manhole (PIT)		Micro-Trenching (Meter)	6	MH1	MH NO.
24C FOC	4031m	Installed Patch Cord		Installed Pole (7.5M)	108	Tension	212	New Manhole(JRC7)	4	Temporary Infra (Meter)		TKS-1	Existing TNB Pole NO.
48C FOC		FDC	1	Installed Pole (6.7M)		Pole Ring	13	FDP Boundary		Loop / Coil (Meter)	80	P001	New Pole NO.
96C FOC		Closure	2	Existing TNB Pole		FDP with (1:8) splitter	13	HDD (Meter)	410	#		CL01	Closure NO.
144C FOC		Existing Closure		Installed Riser (6M)	4	Existing Manhole		Open Cut (Meter)	6	C01		DP1	FDP NO.

ACTUAL HOMEPASS :

KEY PLAN:	PROJECT OWNER: 	MAIN CONTRACTOR: 	SUB-CONTRACTOR:	PROJECT TITLE: CONTRACTOR FOR SURVEY, TECHNICAL PROPOSAL AND WAYLEAVE & PERMIT APPROVAL -POP2 PROJECT	DRAWING TITLE: SLD Drawing AEB0038 SMK CHOONG HUA	Design By : Date : 20/12/2024
					PROJECT PHASE: POP 2	Drawn By : Scale : NTS
						Checked By : Job Number : JOB/NUMBER
						DRAWING NUMBER : AEB0038-CD-01 Sheet : 1/1
						THIS PRINT AND ITS COPYRIGHT ARE THE PROPERTY OF STEADCOM SDN BHD Size : A3