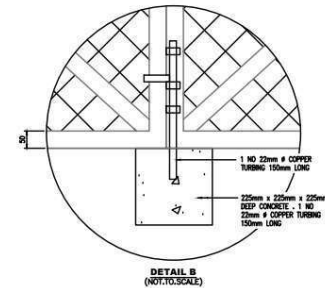
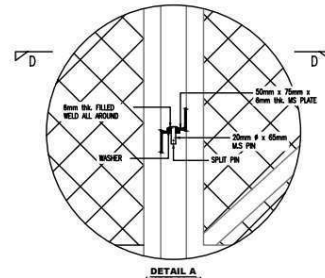
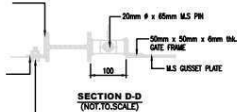


6mm FILLED WELD 75mm at 75mm at 400mm c/c

25mm WIDE x 4.6mm 8/0 M.S. FLAT (STRACHER BARS) INTERLOCK WITH THE 10mm PVC COATED CHAIN LINK MESH
10mm # M.S. BOLT WITH ONE WASHER EACH ON THE HEAD AND NUT END TO BRIDGE 25mm x 4.6mm 8/0 M.S. STRACHER BAR WELDED THROUGH CHAINLINK MESH AT POSITION OF 10mm STAINING WIRE (TYPICAL FOR INSTALLATION AT ALL STRACHING AND CORNER POST).



All rights reserved.
These drawings, plans and specifications and copyright therein are the property of Syarikat Air Terengganu (SATU) and must not be used, reproduced or copied wholly or in part without the written permission of Syarikat Air Terengganu (SATU).

AUTHORITIES APPROVAL:

PROJECT TITLE:

CADANGAN KERJA-KERJA MENGAHIL, MEMASANG DAN MENGIKUI DUAI(2) UNIT VARIABLE SPEED DRIVE (VSD) BOOSTER PUMP DI SEKITAR SMPANG MASUK KE KG SERI BAYAS DAN KG BINTANG SERTA LAIN-LAIN KERJA YANG BERKAITAN BAGI SYARIKAT AIR TERENGGANU SDN BHD (SATU) DAERAH SETU.

- KAMPUNG SERI BAYAS

PIHAK BERKUALA PENGAGIHAN AIR:

SATU
SYARIKAT AIR TERENGGANU SDN BHD
(453286-D)
JALAN SULTAN ISMAIL
20200 KUALA TERENGGANU
TERENGGANU
TEL: 09-6214111 / 09-6201111 FAX: 09-6201104

REVISION:			
NO.	DESCRIPTION	DATE	SKM

DRAWING TITLE:

- PLAN & ELEVATION

DESIGNED BY	HWHR	DATE	AUGUST 2024
DRAWN BY	AMAM	DATE	AUGUST 2024
SCALE	1 : 50		
JOB NO	DWC	DRAWING NO	ISSUE
	KG SERI BAYAS NO 2		0