



PROJEK PENYEDIAAN DAN PENYELENGGARAAN POINT OF PRESENCE (POP)
FASA 2: HAB INFRASTRUKTUR GENTIAN OPTIK BERHAMPIRAN DENGAN
SEKOLAH, KAWASAN PERINDUSTRIAN, PREMIS KERAJAAN DAN KOMUNITI
SEKITARNYA OLEH KEMENTERIAN KOMUNIKASI MALAYSIA - ZON UTARA
(KKMM.400-11/17/132(1))



TECHNICAL PROPOSAL POP2 ABC0067 SJK (C) KHAI MENG (D-SIDE)

Company Name:	STEADCOM SDN BHD
Company Address:	11-3, Jalan Puteri 2/6, Bandar Puteri, 47100 Puchong, Selangor
Prepared By:	Fassya
Date:	13/12/2024



Starting Point

Site / Boundary Name	Sungkai
Address	Sekolah Jenis Kebangsaan (Cina) Khai Meng, Sungkai, Perak
District	Sungkai
Postcode	35600
State	Perak
GPS Coordinate	3.996935, 101.310922
LRD	A

End Point

Site / Boundary Name	Sungkai
Address	Kampung Buloh Telor, Perak
District	Sungkai
Postcode	35600
State	Perak
GPS Coordinate	3.995690, 101.312831
LRD	B



PROJEK PENYEDIAAN DAN PENYELENGGARAAN POINT OF PRESENCE (POP)
 FASA 2: HAB INFRASTRUKTUR GENTIAN OPTIK BERHAMPIRAN DENGAN
 SEKOLAH, KAWASAN PERINDUSTRIAN, PREMIS KERAJAAN DAN KOMUNITI
 SEKITARNYA OLEH KEMENTERIAN KOMUNIKASI MALAYSIA - ZON UTARA
 (KKMM.400-11/17/132(1))



A member of OCK Group Berhad

1.0 Work Summary

No	Proposed Distance and Method	Unit	Qty
1	Horizontal Directional Drilling (HDD)	m	66
2	Carriage Way Open trench (CW)	m	0
3	Grass Verge Open Trenching (GV)	m	0
4	Micro trenching (MT)	m	0
	Total		66m

	Other Information	Unit	Qty
1	Proposed Manhole	EA	2
2	Proposed Pole	EA	47pcs
3	Joint Closure	EA	3pcs
4	Estimated time required for completion	days	0



PROJEK PENYEDIAAN DAN PENYELENGGARAAN POINT OF PRESENCE (POP)
FASA 2: HAB INFRASTRUKTUR GENTIAN OPTIK BERHAMPIRAN DENGAN
SEKOLAH, KAWASAN PERINDUSTRIAN, PREMIS KERAJAAN DAN KOMUNITI
SEKITARNYA OLEH KEMENTERIAN KOMUNIKASI MALAYSIA - ZON UTARA
(KKMM.400-11/17/132(1))

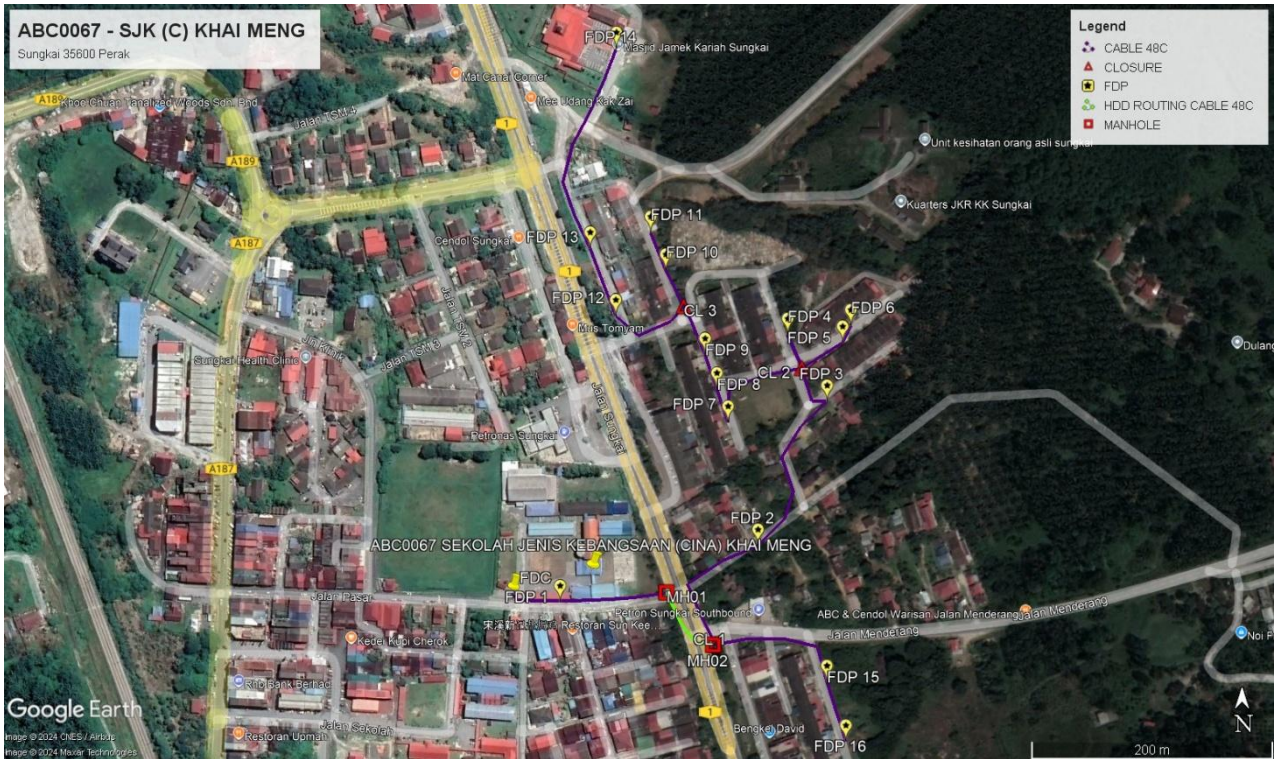


2.0 LOCAL AUTHORITY SUMMARY

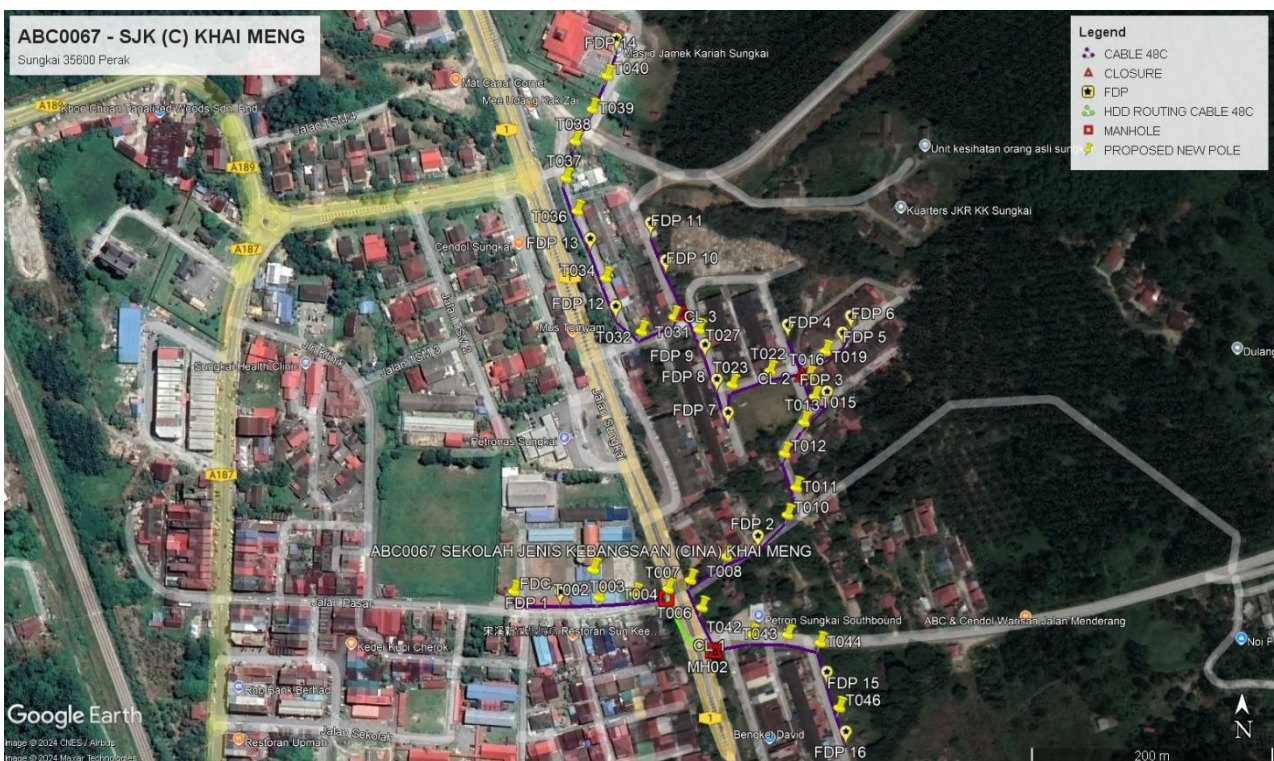
Daerah Tapah

Bil	Items	Owner	Quantity	Distance
1	HDD	JKR	2pcs	66m
		Majlis	-	-
		Estate / Private Land	-	-
2	New Pole	JKR	-	-
		Majlis	47	1284m
		Estate / Private Land	-	-
3	Existing TNB Pole	JKR	-	-
		Majlis	-	-
		Estate / Private Land	-	-
Total				1350m

3.0 SITE PLAN KMZ (Overview site area)
3.1 Proposed FDP and Closure



3.2 Proposed New Pole



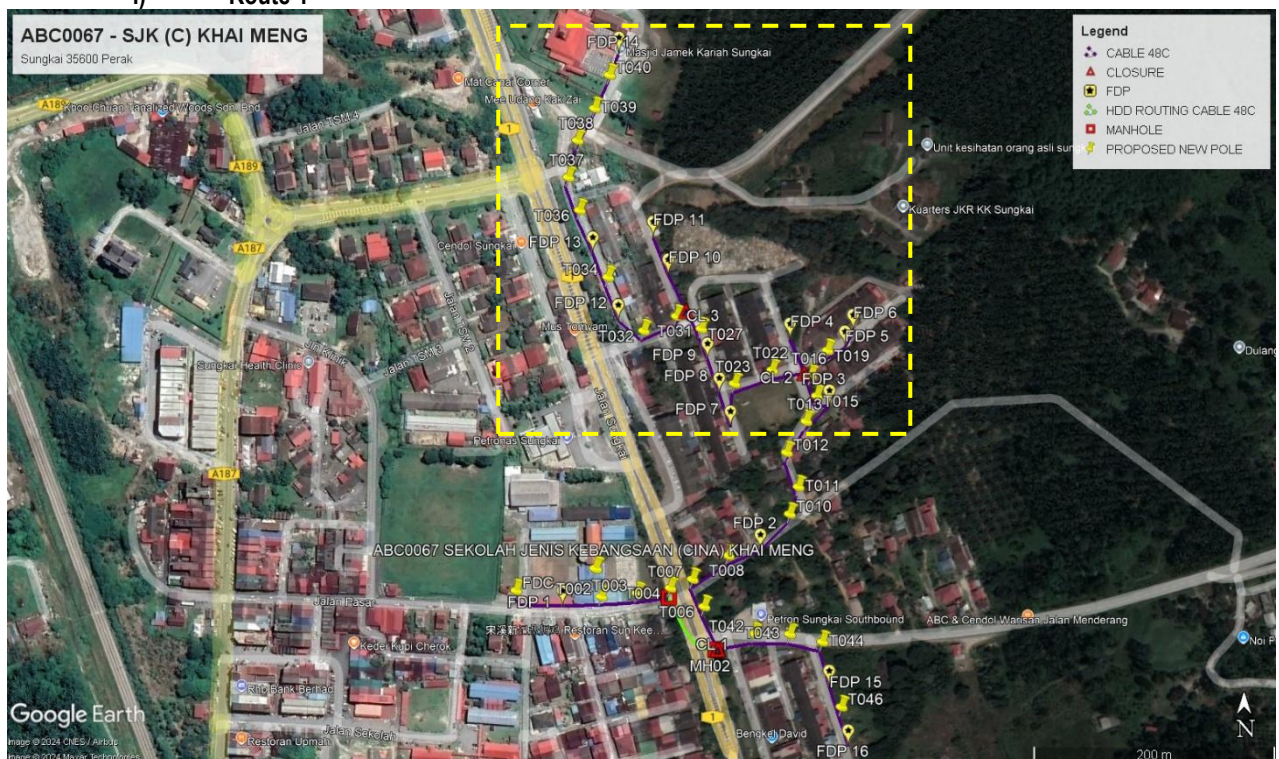
3.3 Site Plan KMZ Routing (All Local Authority)



Purple Colour – PBT Road
Green Colour – JKR Road

3.4 Site Plan – KMZ (All site Area)

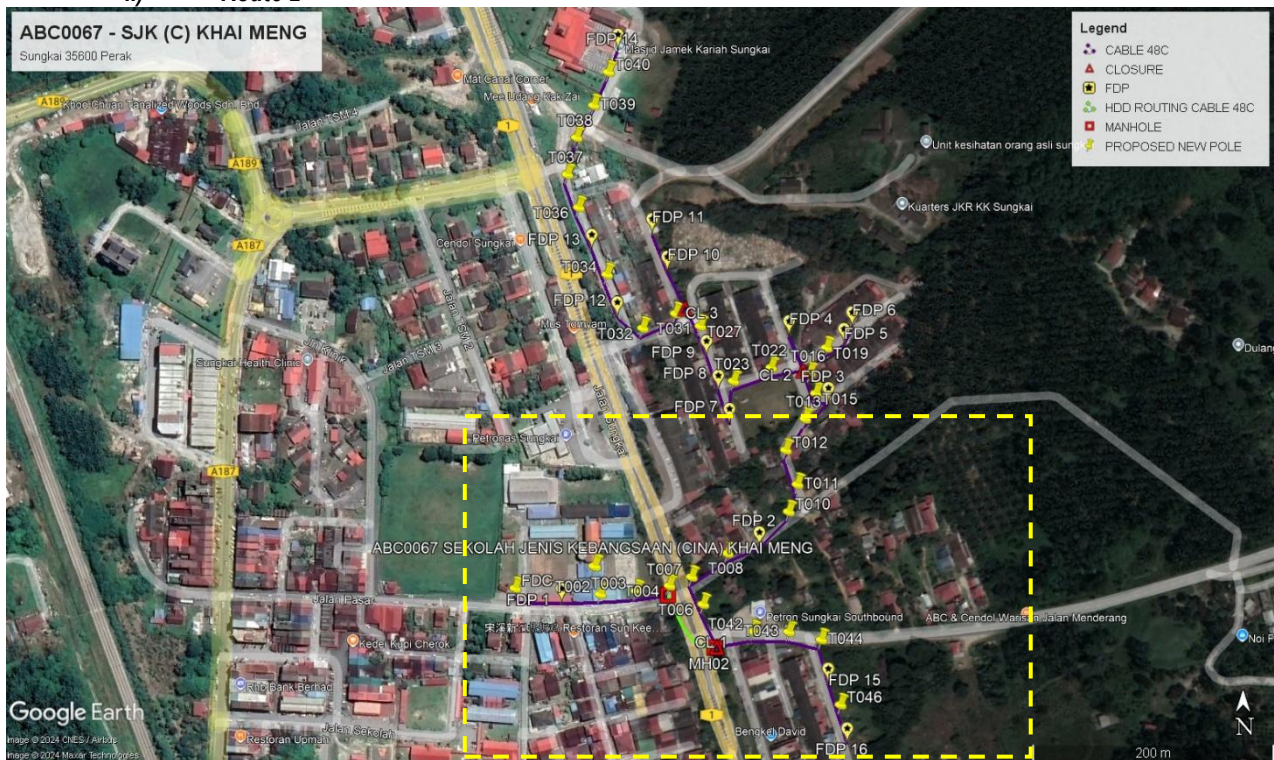
i) Route 1

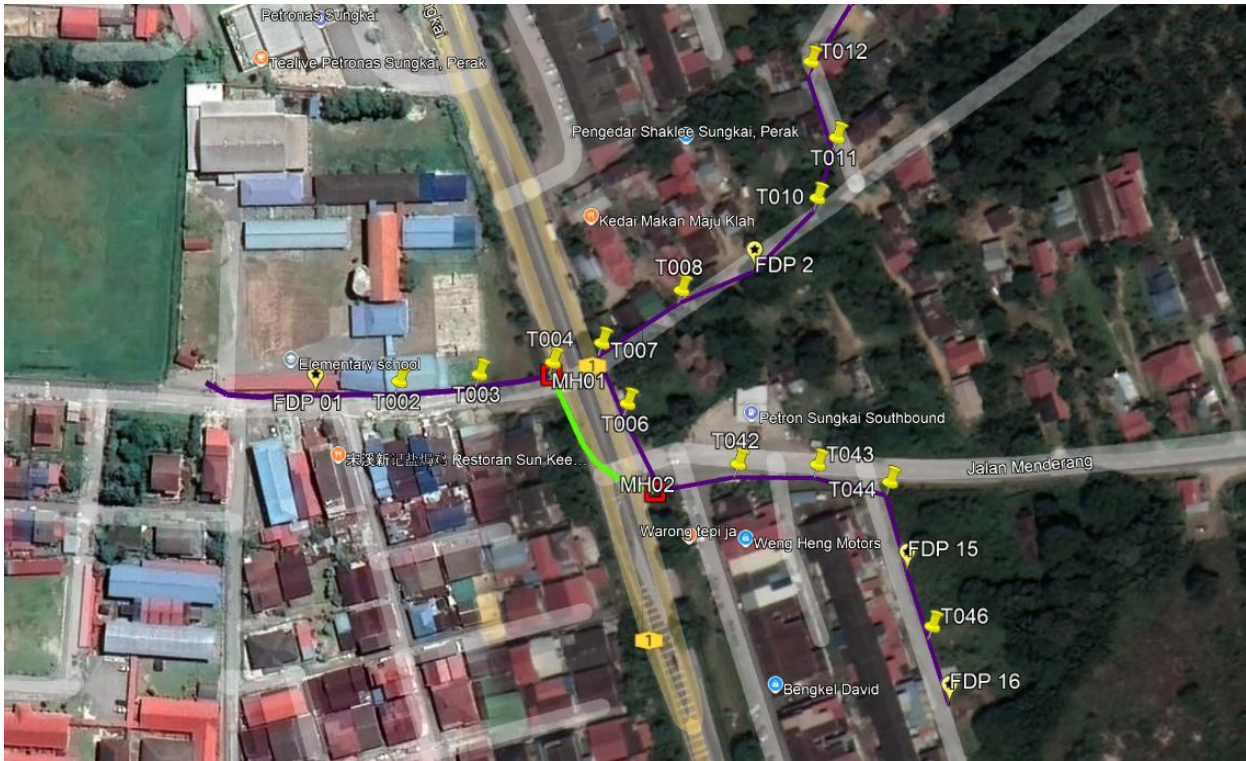




Route: 1.1

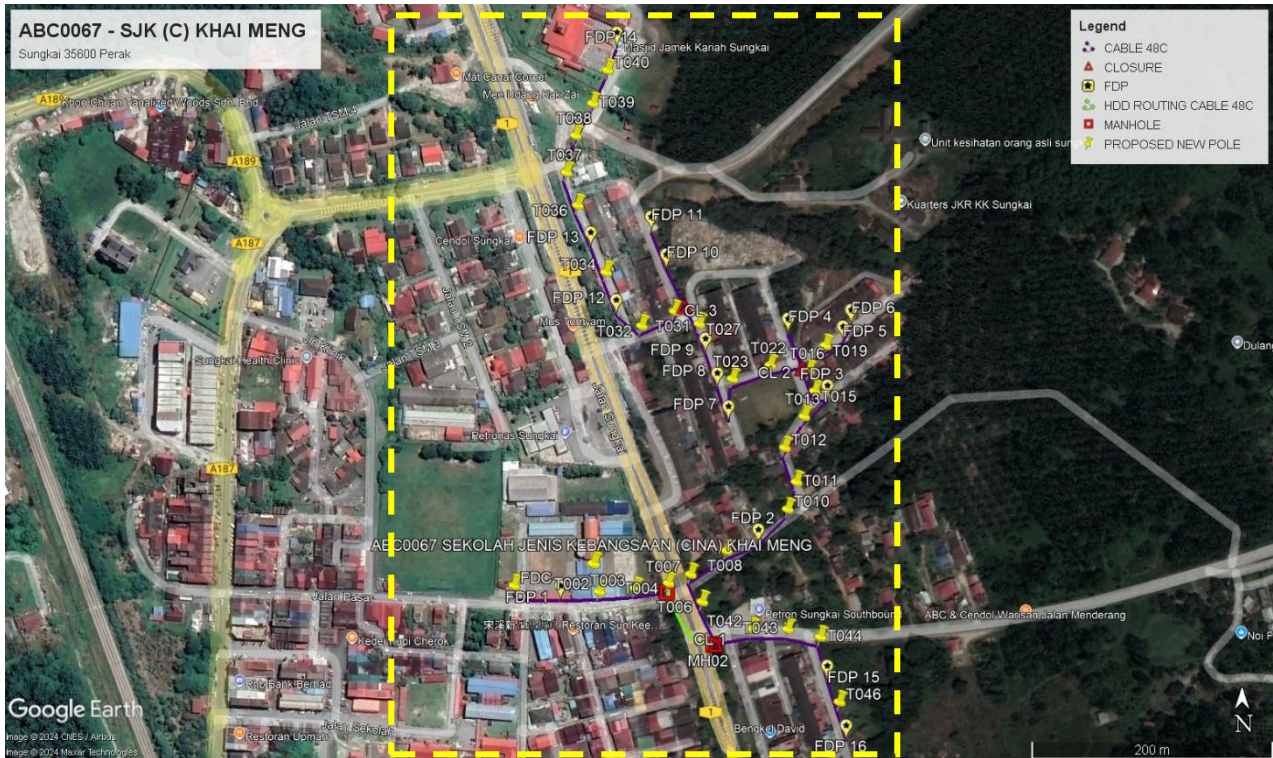
ii) Route 2





Route:2.1

3.5 Site Plan – KMZ Routing (Proposed New Pole)





PROJEK PENYEDIAAN DAN PENYELENGGARAAN POINT OF PRESENCE (POP)
 FASA 2: HAB INFRASTRUKTUR GENTIAN OPTIK BERHAMPIRAN DENGAN
 SEKOLAH, KAWASAN PERINDUSTRIAN, PREMIS KERAJAAN DAN KOMUNITI
 SEKITARNYA OLEH KEMENTERIAN KOMUNIKASI MALAYSIA - ZON UTARA
 (KKMM.400-11/17/132(1))



4.0 Proposed New Pole Lat & long Table

No	Label	Pole & Manhole ID	Latitude	Longitude	Local Authority
1	FDC/OLT	T000	3.9967782	101.3103308	MD TAPAH
2	MH01	MH01	3.9967996	101.3114918	JKR BATANG PADANG
3	MH02	MH02	3.9964095	101.311841	JKR BATANG PADANG
4	CL 1	T005	3.9964126	101.3118587	JKR BATANG PADANG
5	CL 2	T017	3.9984689	101.3125034	MD TAPAH
6	CL 3	T029	3.998931	101.3116222	MD TAPAH
7	FDP 01	T001	3.9967297	101.3106988	MD TAPAH
8	FDP 2	T009	3.9971479	101.312175	MD TAPAH
9	FDP 3	T014	3.9982209	101.3126908	MD TAPAH
10	FDP 4	T018	3.9987181	101.3123968	MD TAPAH
11	FDP 5	T020	3.9986598	101.3128063	MD TAPAH
12	FDP 6	T021	3.9987837	101.3128678	MD TAPAH
13	FDP 07	T024	3.9980658	101.3119517	MD TAPAH
14	FDP 08	T025	3.9983136	101.3118683	MD TAPAH
15	FDP 09	T026	3.99857	101.3117802	MD TAPAH
16	FDP 10	T029	3.9991963	101.3114871	MD TAPAH
17	FDP 11	T030	3.9994769	101.3113741	MD TAPAH
18	FDP 12	T033	3.9988578	101.3111139	MD TAPAH
19	FDP 13	T035	3.9993607	101.3109232	MD TAPAH
20	FDP 14	T041	4.0008484	101.3111184	MD TAPAH
21	FDP 15	T045	3.9961344	101.3126891	MD TAPAH
22	FDP 16	T047	3.9956904	101.3128305	MD TAPAH



PROJEK PENYEDIAAN DAN PENYELENGGARAAN POINT OF PRESENCE (POP)
 FASA 2: HAB INFRASTRUKTUR GENTIAN OPTIK BERHAMPIRAN DENGAN
 SEKOLAH, KAWASAN PERINDUSTRIAN, PREMIS KERAJAAN DAN KOMUNITI
 SEKITARNYA OLEH KEMENTERIAN KOMUNIKASI MALAYSIA - ZON UTARA
 (KKMM.400-11/17/132(1))



4.1 Overall Pole (Proposed New Pole)

NO	POLE & MANHOLE ID	DISTANCE (M)	LATITUDE	LONGITUDE	LOCAL AUTHORITY
1	T000	0	3.9967782	101.3103308	MD TAPAH
2	T001	41	3.9967297	101.3106988	MD TAPAH
3	T002	30	3.9967332	101.3109671	MD TAPAH
4	T003	30	3.9967576	101.3112361	MD TAPAH
5	T004	24	3.9967973	101.3114833	MD TAPAH
6	T005	66	3.9964126	101.3118587	JKR BATANG PADANG
7	T006	31	3.9966591	101.3117351	JKR BATANG PADANG
8	T007	24	3.9968623	101.3116489	JKR BATANG PADANG
9	T008	36	3.9970385	101.3119168	MD TAPAH
10	T009	31	3.9971479	101.312175	MD TAPAH
11	T010	31	3.9973479	101.3123738	MD TAPAH
12	T011	24	3.9975507	101.312439	MD TAPAH
13	T012	30	3.9978056	101.3123529	MD TAPAH
14	T013	30	3.9980376	101.3124969	MD TAPAH
15	T014	30	3.9982209	101.3126908	MD TAPAH
16	T015	13	3.9982266	101.3125762	MD TAPAH
17	T016	28	3.9983772	101.3125309	MD TAPAH
18	T017	30	3.9984689	101.3125034	MD TAPAH
19	T018	30	3.9987181	101.3123968	MD TAPAH
20	T019	20	3.9985652	101.3126569	MD TAPAH
21	T020	19	3.9986598	101.3128063	MD TAPAH
22	T021	15	3.9987837	101.3128678	MD TAPAH
23	T022	29	3.998419	101.3122428	MD TAPAH
24	T023	33	3.9983182	101.3119617	MD TAPAH
25	T024	28	3.9980658	101.3119517	MD TAPAH
26	T025	29	3.9983136	101.3118683	MD TAPAH
27	T026	30	3.99857	101.3117802	MD TAPAH
28	T027	19	3.9987268	101.3117142	MD TAPAH
29	T029	25	3.998931	101.3116222	MD TAPAH
30	T029	33	3.9991963	101.3114871	MD TAPAH
31	T030	33	3.9994769	101.3113741	MD TAPAH
32	T031	16	3.9988198	101.3115297	MD TAPAH
33	T032	30	3.9987119	101.3112841	MD TAPAH
34	T033	25	3.9988578	101.3111139	MD TAPAH
35	T034	30	3.9991111	101.311017	MD TAPAH
36	T035	30	3.9993607	101.3109232	MD TAPAH
37	T036	31	3.9996099	101.3108053	MD TAPAH
38	T037	29	3.9998544	101.310721	MD TAPAH

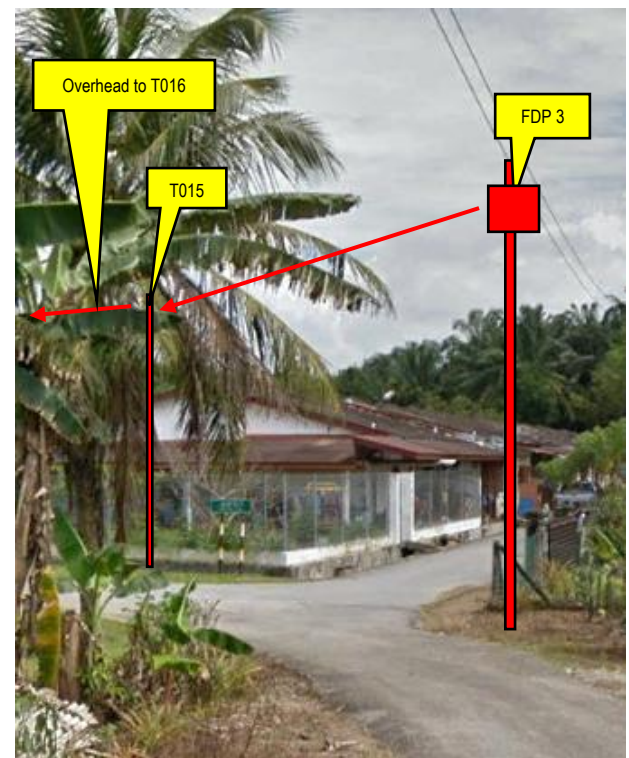
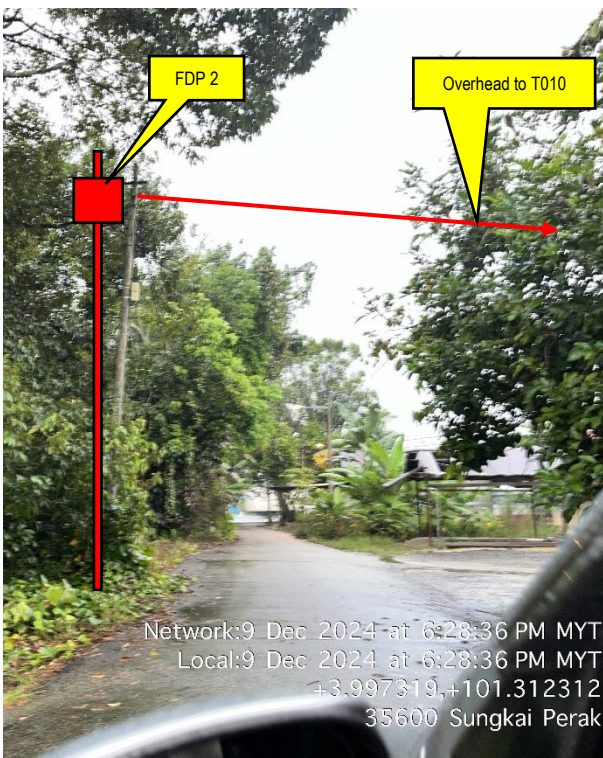
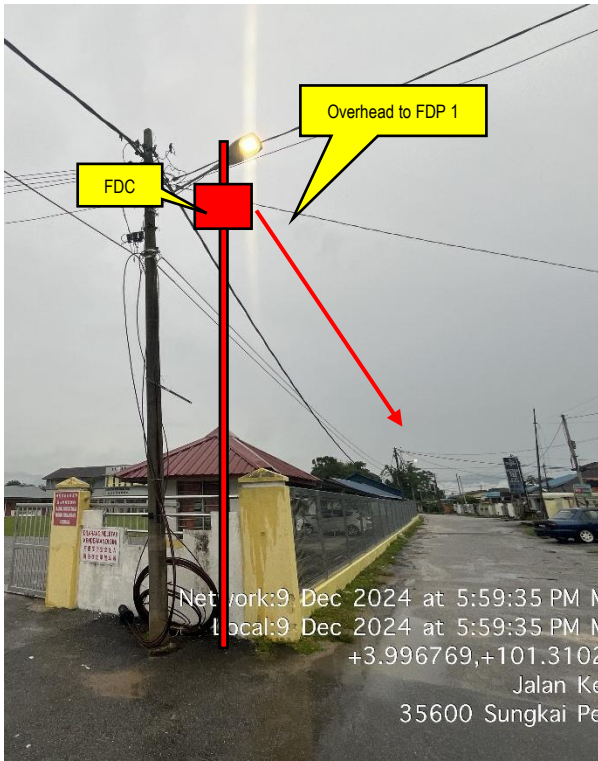


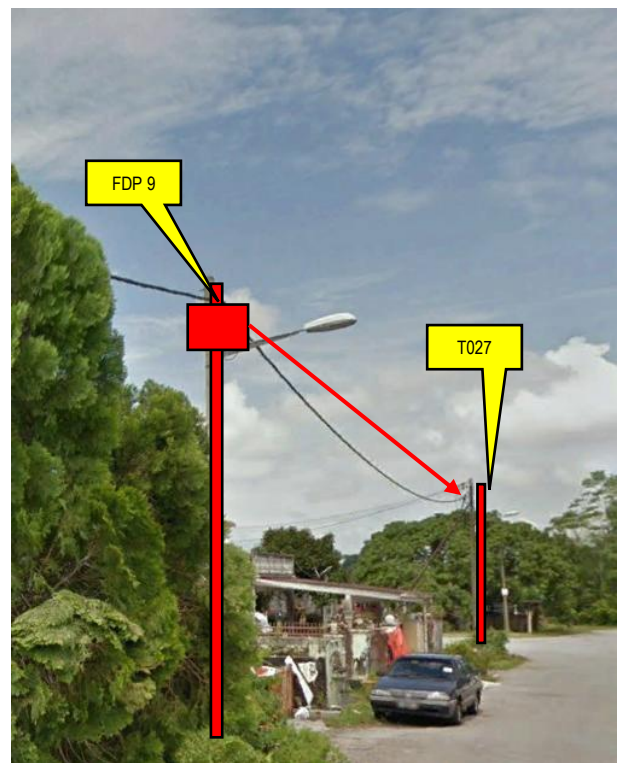
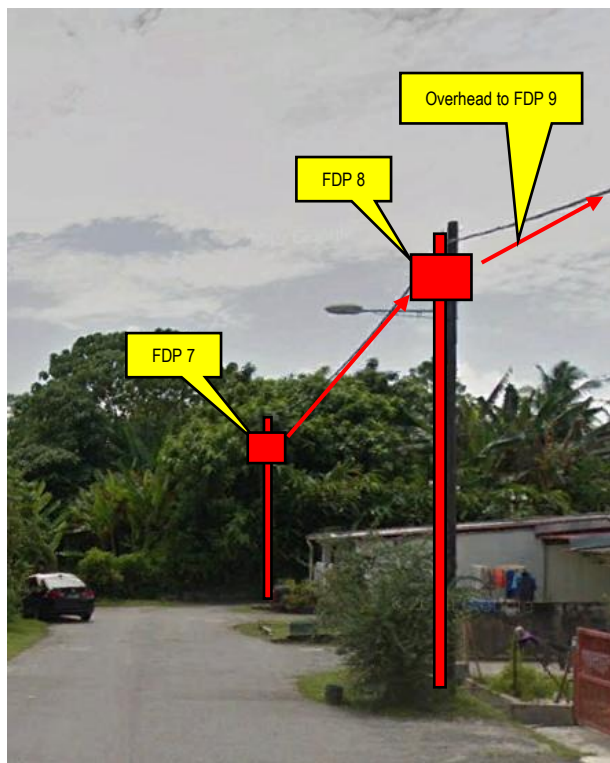
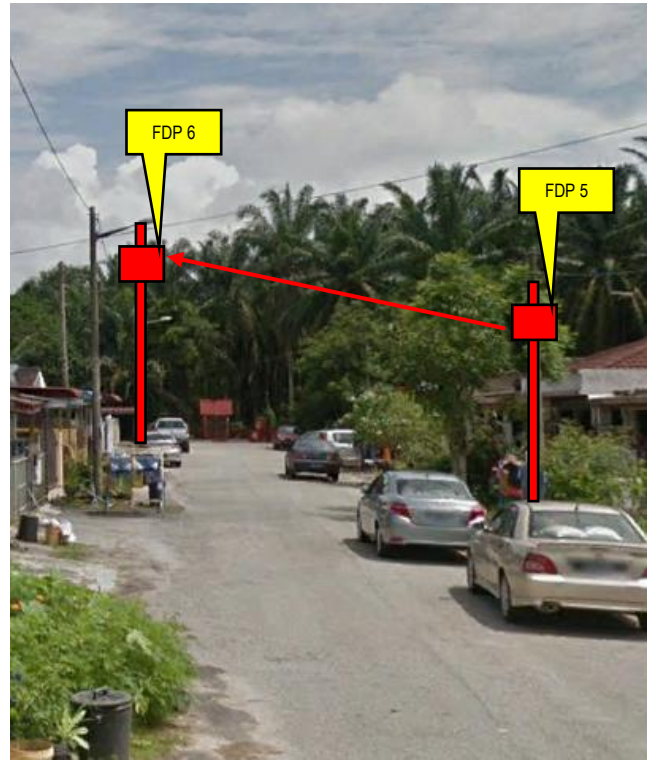
PROJEK PENYEDIAAN DAN PENYELENGGARAAN POINT OF PRESENCE (POP)
FASA 2: HAB INFRASTRUKTUR GENTIAN OPTIK BERHAMPIRAN DENGAN
SEKOLAH, KAWASAN PERINDUSTRIAN, PREMIS KERAJAAN DAN KOMUNITI
SEKITARNYA OLEH KEMENTERIAN KOMUNIKASI MALAYSIA - ZON UTARA
(KKMM.400-11/17/132(1))

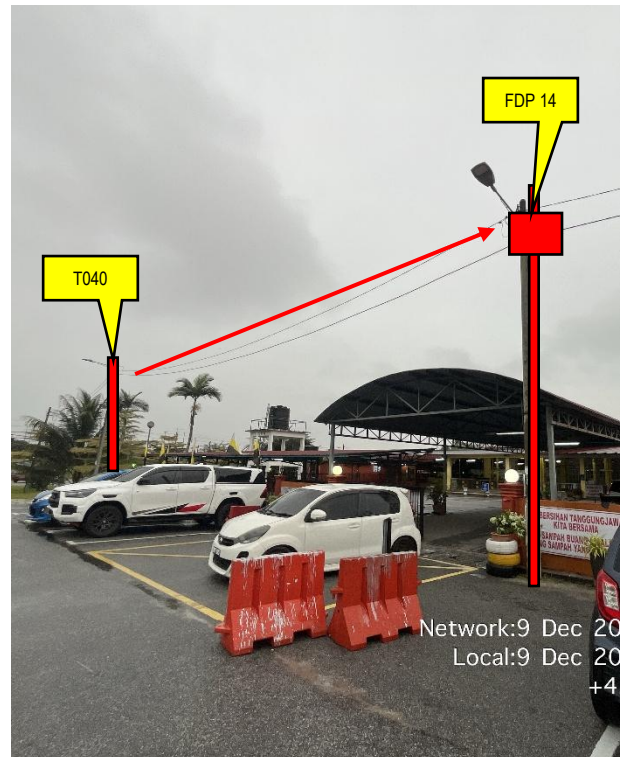
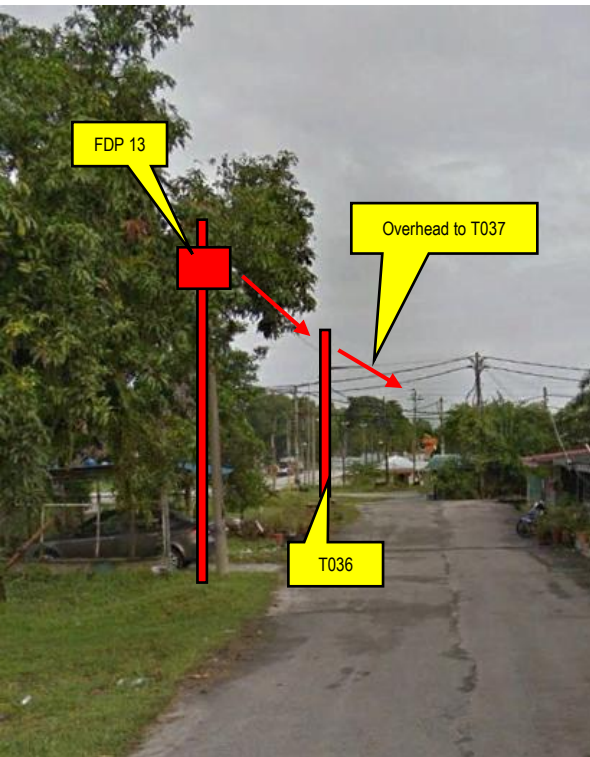
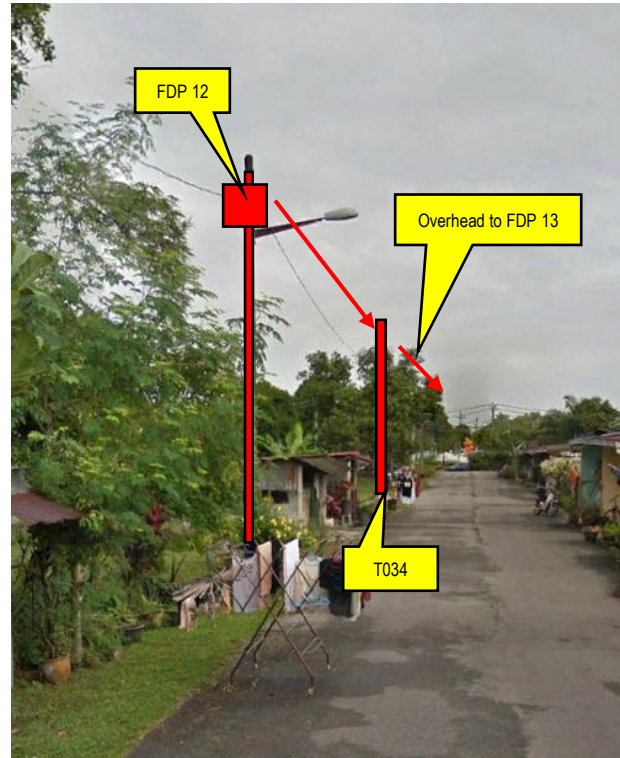
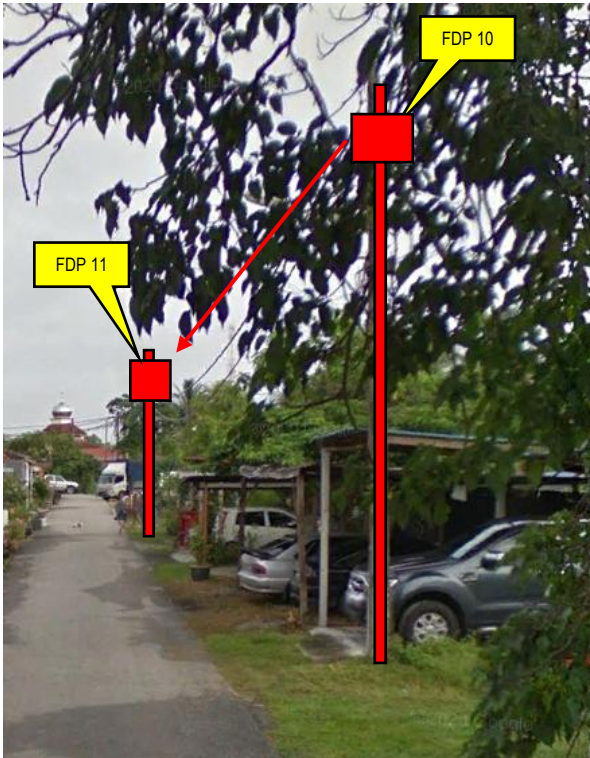
STEADCOM
A member of OCK Group Berhad

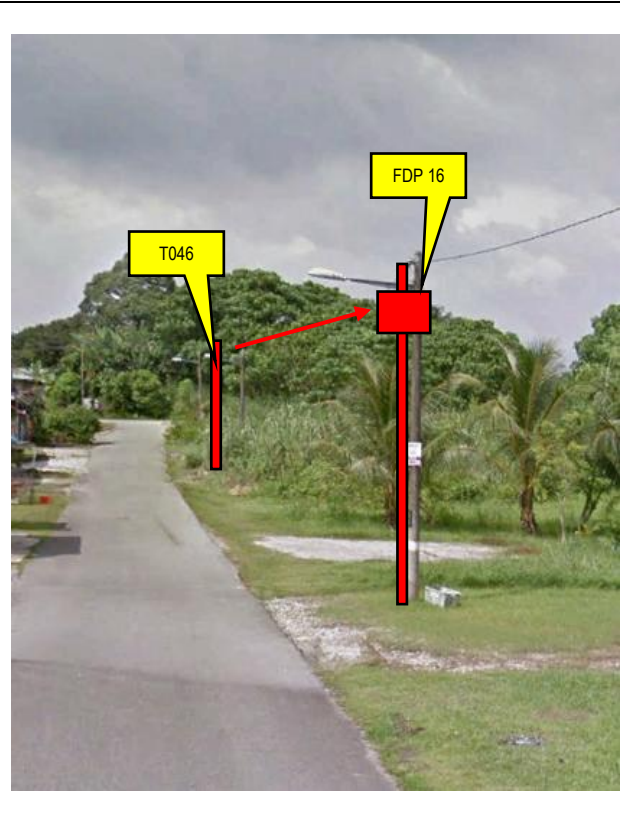
39	T038	31	4.000129	101.3107906	MD TAPAH
40	T039	30	4.0003679	101.3109183	MD TAPAH
41	T040	30	4.0006155	101.3110286	MD TAPAH
42	T041	28	4.0008484	101.3111184	MD TAPAH
43	T042	28	3.9964565	101.3121071	MD TAPAH
44	T043	30	3.9964544	101.3123748	MD TAPAH
45	T044	28	3.9963961	101.3126179	MD TAPAH
46	T045	30	3.9961344	101.3126891	MD TAPAH
47	T046	26	3.9959124	101.3127598	MD TAPAH
48	T047	26	3.9956904	101.3128305	MD TAPAH

5.0 SITE PHOTO – PROPOSED NEW POLE









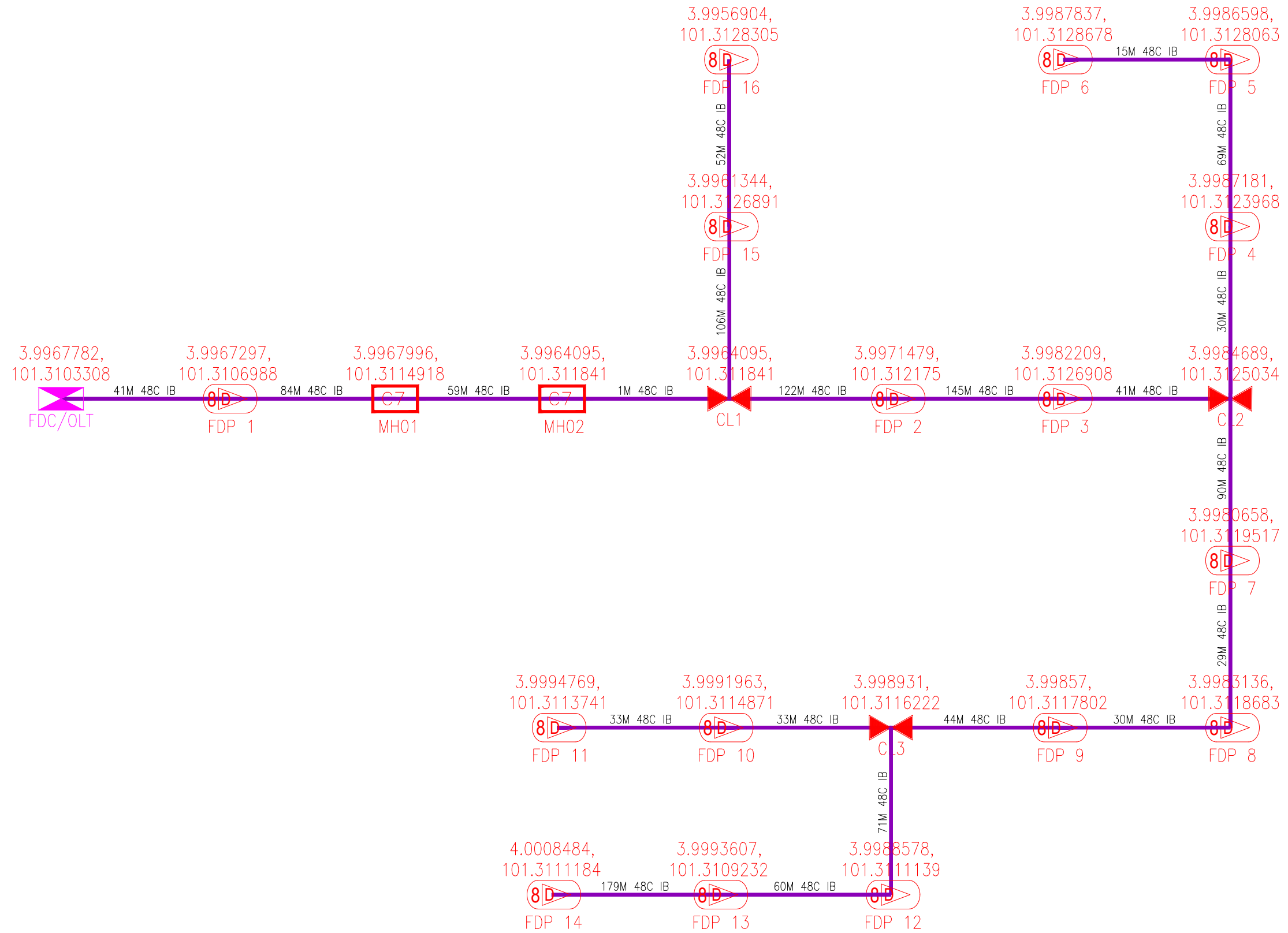


PROJEK PENYEDIAAN DAN PENYELENGGARAAN POINT OF PRESENCE (POP)
FASA 2: HAB INFRASTRUKTUR GENTIAN OPTIK BERHAMPIRAN DENGAN
SEKOLAH, KAWASAN PERINDUSTRIAN, PREMIS KERAJAAN DAN KOMUNITI
SEKITARNYA OLEH KEMENTERIAN KOMUNIKASI MALAYSIA - ZON UTARA
(KKMM.400-11/17/132(1))



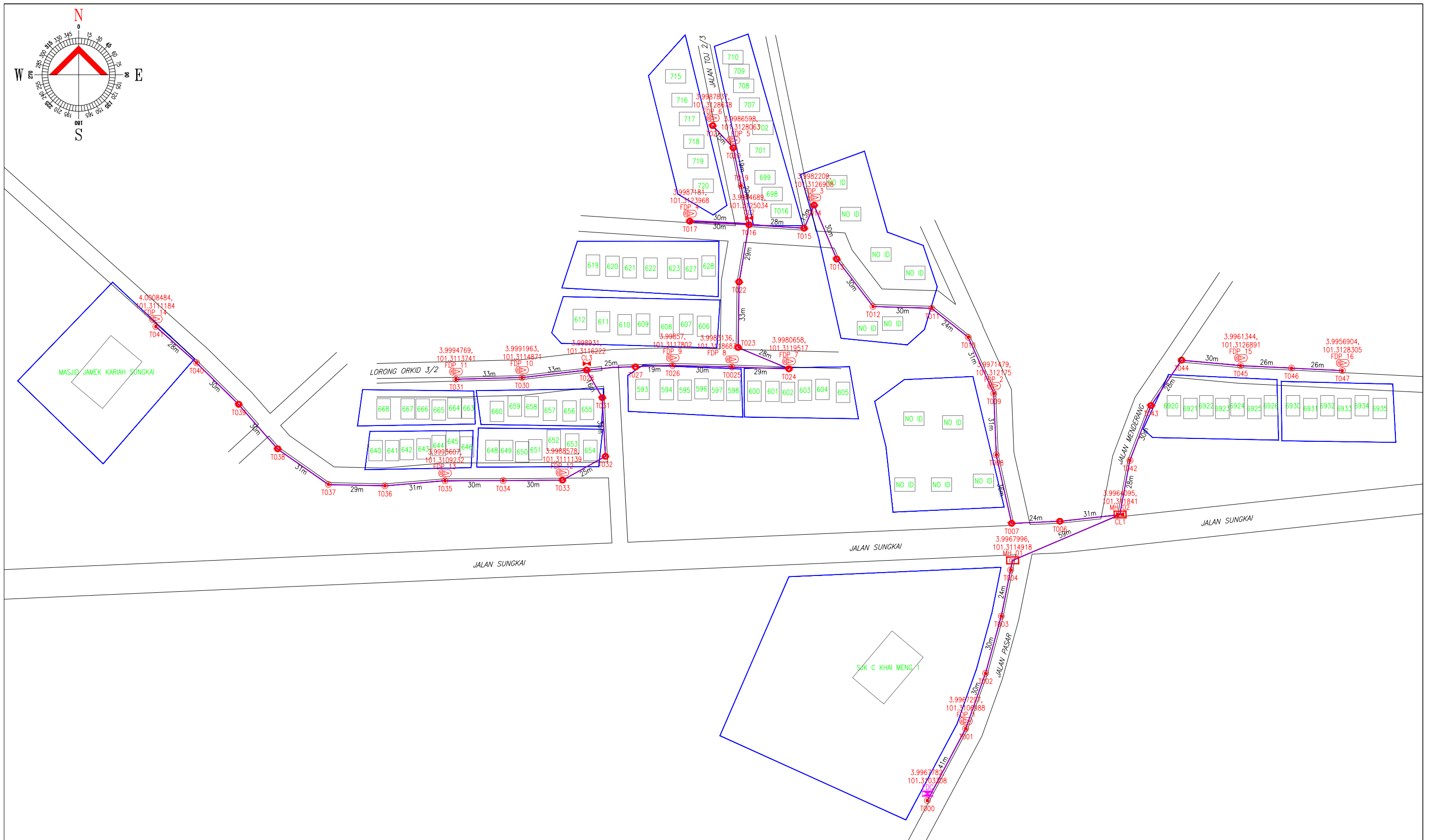
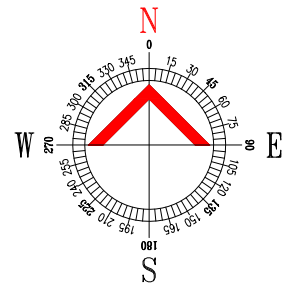
6.0 3rd PARTIES DEPENDENCIES

NO	LOCAL COUNCIL / AUTHORITY	REMARK
1	N/A	



LEGEND	NOS.	NOS.	NOS.	NOS.	NOS.	NOS.	NOS.	NOS.	
	12C FOC		Installed Pole (9m)		New Manhole(JRC7)		Tension Small / Tension Big		MH NO.
	24C FOC		Installed Riser		House Number		Existing Manhole		Existing TNB Pole NO.
	48C FOC		Closure		Existing TNB Pole		Closure NO.		New Pole NO.
	96C FOC		New Manhole (PIT)		LOOP		FDP NO.		SEE A-A in this page
	144C FOC		Installed Pole (7.5M)		FDP Boundary		FDC NO.		SEE SHEET XXX

KEY PLAN : POP2 PROJECT IN PERAK	MAIN CONTRACTOR 	SUB-CONTRACTOR : A member of FOCK Group Berhad	PROJECT TITLE : CONTRACTOR FOR SURVEY, TECHNICAL PROPOSAL AND WAYLEAVE,& PERMIT APPROVAL -POP2 PROJECT	DRAWING TITLE: SINGLE LINE DRAWING ABC0067 SEKOLAH JENIS KEBANGSAAN (CINA) KHAI MENG	Design By : FITRI Date : 12/12/2024
				PROJECT PHASE: POP2	Checked By : AMSYAR Job Number : JOB_NUMBER
				DRAWING NUMBER : ABC0067-SLD-01	Scale : N.T.S Sheet : 1/1
				THIS PRINT AND ITS COPYRIGHT ARE THE PROPERTY OF ALLO TECHNOLOGY SDN BHD	Size : A3



LEGEND	NOS.	NOS.	NOS.	NOS.	NOS.	NOS.	NOS.	
12C FOC	Installed 1:4 splitter in FDC	Installed Pole (9m)	C7	New Manhole(JRC7)	TS / TB	Tension Small / Tension Big	MH1	MH NO.
24C FOC	FDP with (1:8) splitter	Installed Riser	#	House Number	TKS-1	Existing Manhole	TKS-1	Existing TNB Pole NO.
48C FOC	Closure	Suspension Big	●	Existing TNB Pole	C01	Closure NO.	P001	New Pole NO.
96C FOC	New Manhole (PIT)	Suspension Small	○	LOOP	FDP1	FDP NO.	SEE A-A in this page	
144C FOC	Installed Pole (7.5M)	FDC	○	FDP Boundary	FDC	FDC NO.	SEE SHEET XXX	

ACTUAL HOMEPASS :

KEY PLAN : POP2 PROJECT IN PERAK	MAIN CONTRACTOR PRIVASAT	SUB-CONTRACTOR : A member of FOCK Group Berhad	PROJECT TITLE : CONTRACTOR FOR SURVEY, TECHNICAL PROPOSAL AND WAYLEAVE, & PERMIT APPROVAL -POP2 PROJECT	DRAWING TITLE: SINGLE LINE DRAWING ABC0067 SEKOLAH JENIS KEBANGSAAN (CINA) KHAH MENG	Design By : FITRI	Date : 12/12/2024
					Drawn By : FITRI	Scale : N.T.S
PROJECT PHASE: POP2					Checked By : AMSYAR	Job Number : JOB_NUMBER
DRAWING NUMBER : ABC0067-CD-01					Sheet : INDEX	Size : A3
THIS PRINT AND ITS COPYRIGHT ARE THE PROPERTY OF ALLO TECHNOLOGY SDN BHD						