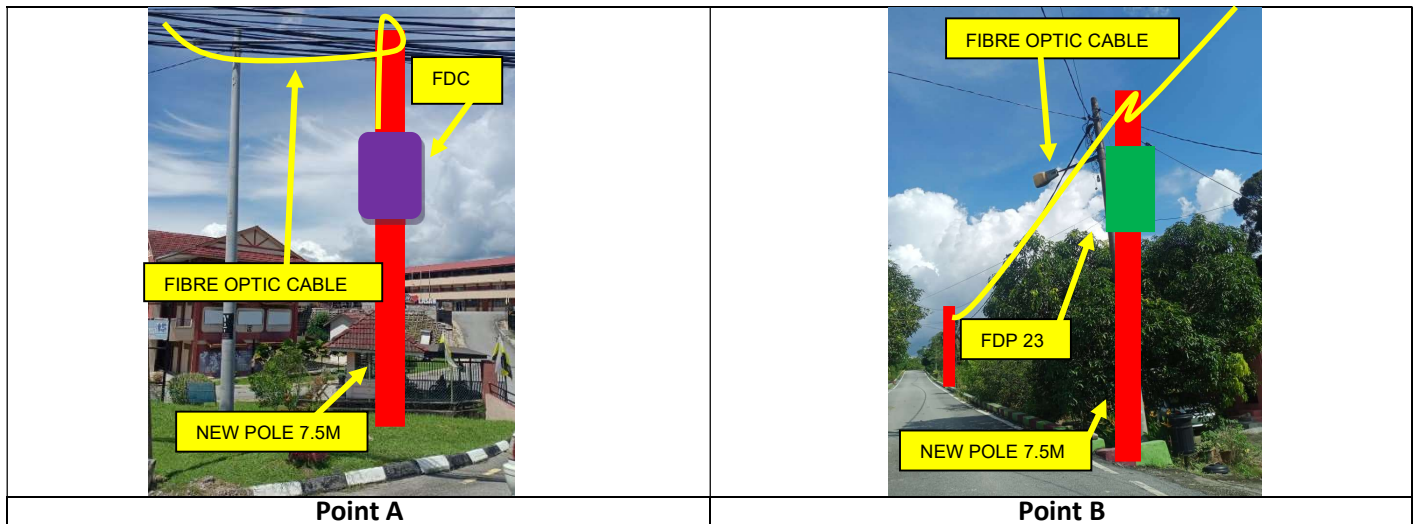


TECHNICAL PROPOSAL

POP2 ABA4035-SEKOLAH MENENGAH KEBANGSAAN RLKT LASAH (D-SIDE)

Company Name : ARATIMUR SDN BHD
Company Address : A-08-13, 8th Floor, Block A, Radia Office, Persiaran Singgahsana, 40150 Bukit Jelutong, Shah Alam, Selangor.
Prepared By : Muhammad Danieal Adikha Bin Zaidi
Date : 11/12/2024



Starting Point

Site / Boundary Name : SMK RLKT LASAH
 Address : Jalan SMK RLKT Lasah, 31100 Sungai Siput , Perak
 District : Sungai Siput
 Postcode : 31100
 State : Perak
 GPS Coordinate : 4.923, 101.068476
 LRD : A

End Point

Site / Boundary Name : Kampong Melayu
 Address : Jalan Kampong Melayu, 31100 Sungai Siput, Perak
 District : Sungai Siput
 Postcode : 31100
 State : Perak
 GPS Coordinate : 4.926312, 101.063909
 LRD : B



PROJEK PENYEDIAAN DAN PENYELENGGARAAN POINT OF PRESENCE (POP) FASA 2: HAB INFRASTRUKTUR GENTIAN OPTIK BERHAMPIRAN DENGAN SEKOLAH, KAWASAN PERINDUSTRIAN, PREMIS KERAJAAN DAN KOMUNITI SEKITARNYA OLEH KEMENTERIAN KOMUNIKASI MALAYSIA – ZON UTARA (KKMM.400-11/17/132(1))



1.0 WORK SUMMARY

| NO | PROPOSED DISTANCE AND METHOD | UNIT | QUANTITY |
|-------|---------------------------------------|------|----------|
| 1 | Horizontal Directional Drilling (HDD) | m | 0 |
| 2 | Carriage Way Open Trench (CW) | m | 0 |
| 3 | Grass Verge Open Trenching (GV) | m | 0 |
| 4 | Micro Trenching (MT) | m | 0 |
| Total | | | 0 |

| NO | OTHER INFORMATION | UNIT | QUANTITY |
|----|--|------|----------|
| 1 | Installation of Short Span ADSS Fibre Cables | m | 2,695 |
| 2 | Install New Pole | ea | 77 |
| 3 | Install New JRC7 Manhole | ea | 0 |
| 4 | Install GI Riser 100mm | ea | 0 |
| 5 | Install Fiber Distribution Point and Closure (Splicing, Termination and Testing) | ea | 28 |
| 6 | Estimated Time Required for Completion | days | 30 |



PROJEK PENYEDIAAN DAN PENYELENGGARAAN POINT OF PRESENCE (POP) FASA 2: HAB INFRASTRUKTUR GENTIAN OPTIK BERHAMPIRAN DENGAN SEKOLAH, KAWASAN PERINDUSTRIAN, PREMIS KERAJAAN DAN KOMUNITI SEKITARNYA OLEH KEMENTERIAN KOMUNIKASI MALAYSIA – ZON UTARA (KKMM.400-11/17/132(1))



2.0 LOCAL AUTHORITY SUMMARY

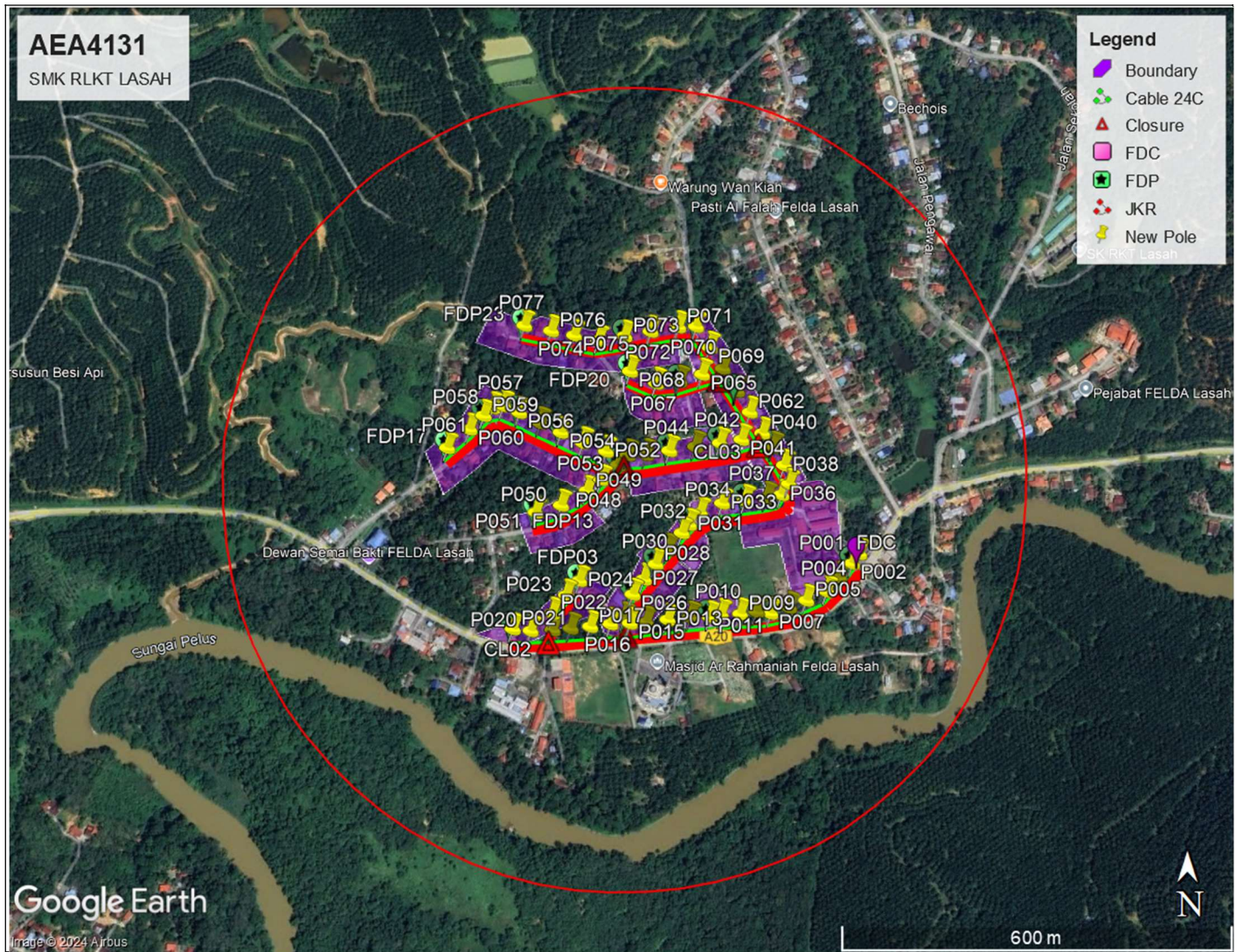
Daerah Sungai Siput

| NO | ITEMS | Owner | Quantity | Distance (m) |
|---------------------------|----------|--------|----------|--------------|
| 1 | HDD | JKR | - | - |
| | | Majlis | - | - |
| | | PDT | - | - |
| 2 | New Pole | JKR | 77 | 2,695 |
| | | Majlis | - | - |
| | | PDT | - | - |
| Total Distance (m) | | | | 2,695 |

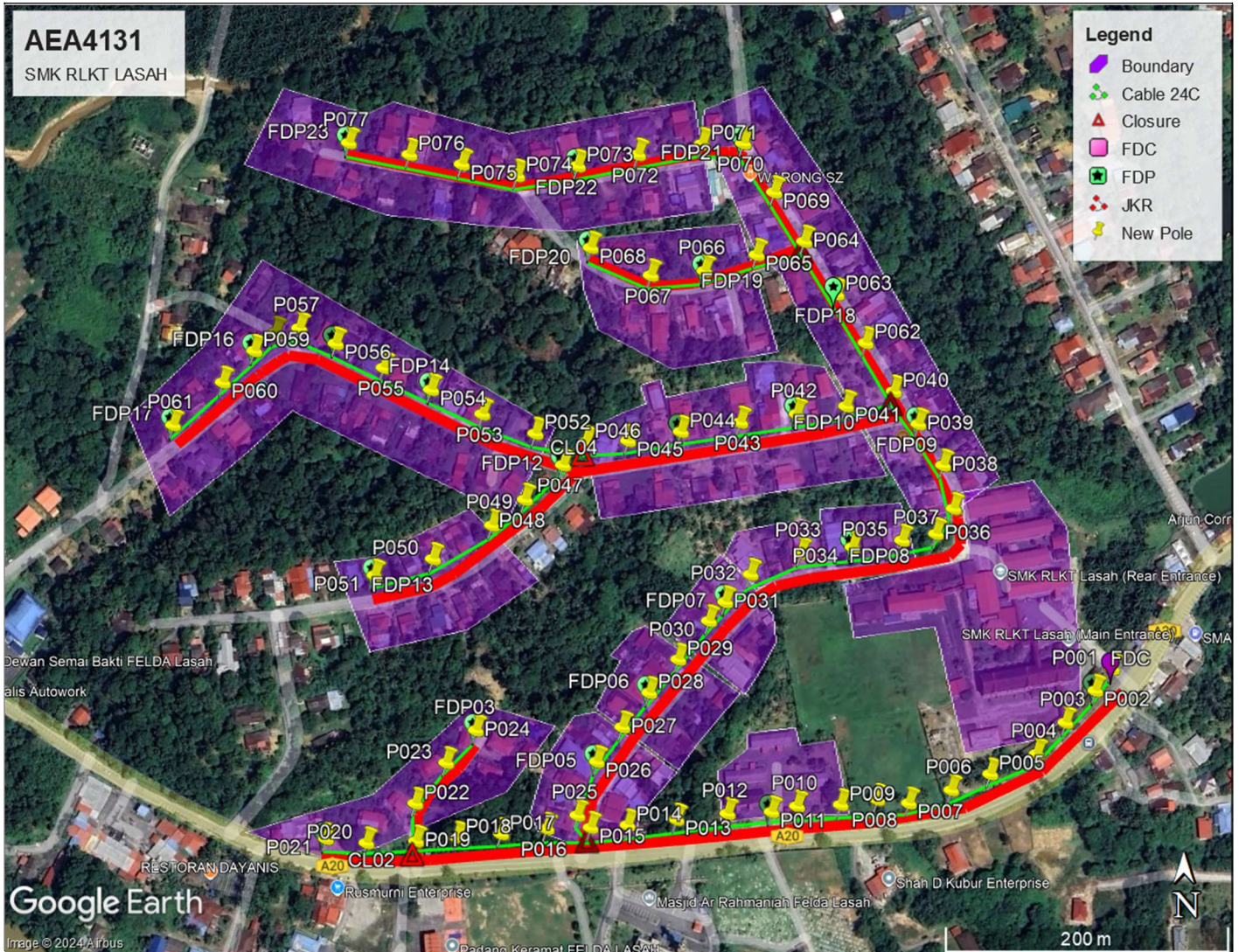
3.0 SITE PLAN (KMZ)

3.1 Overview Site Area

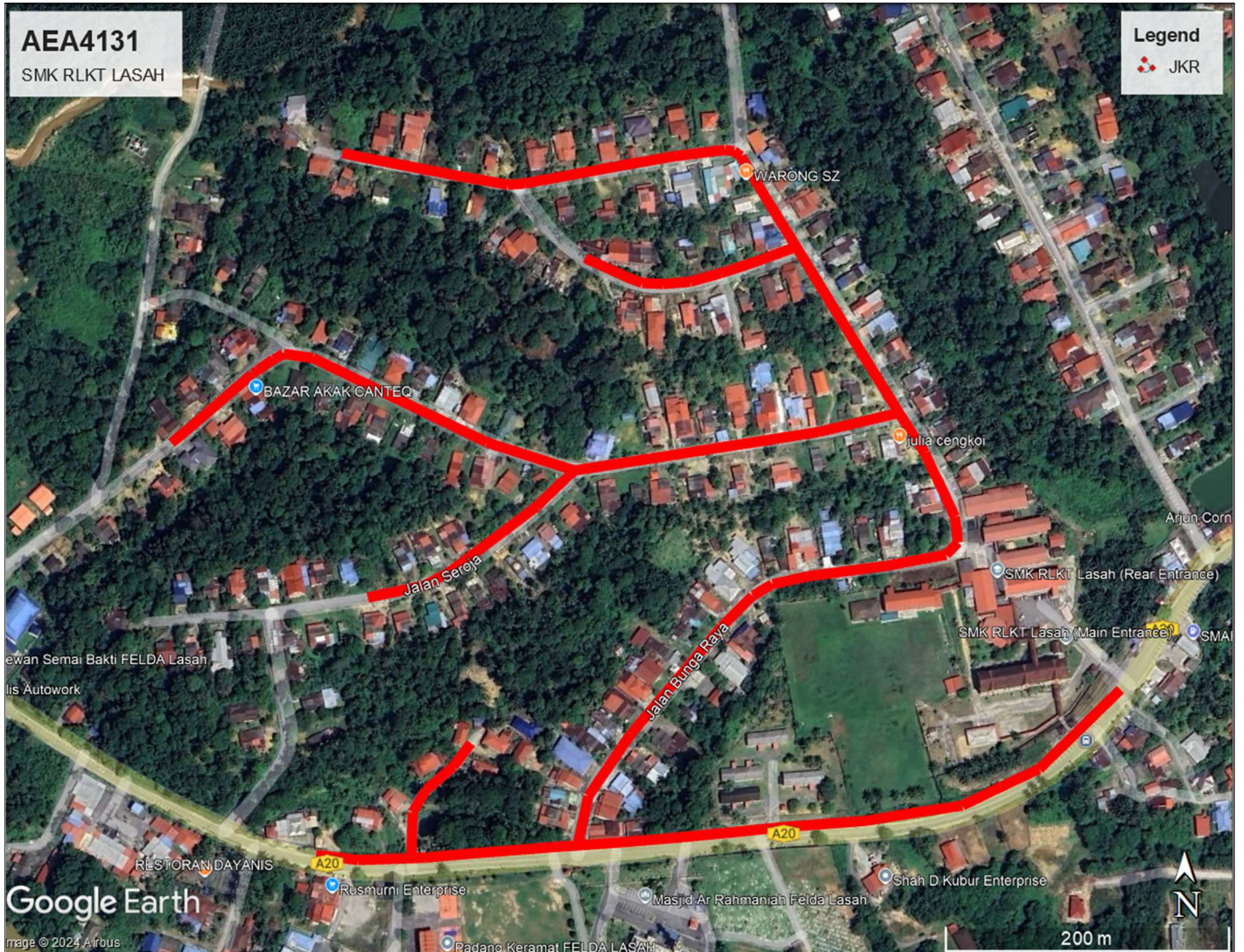
3.2



3.3 Site Boundary



3.3 Road Boundary

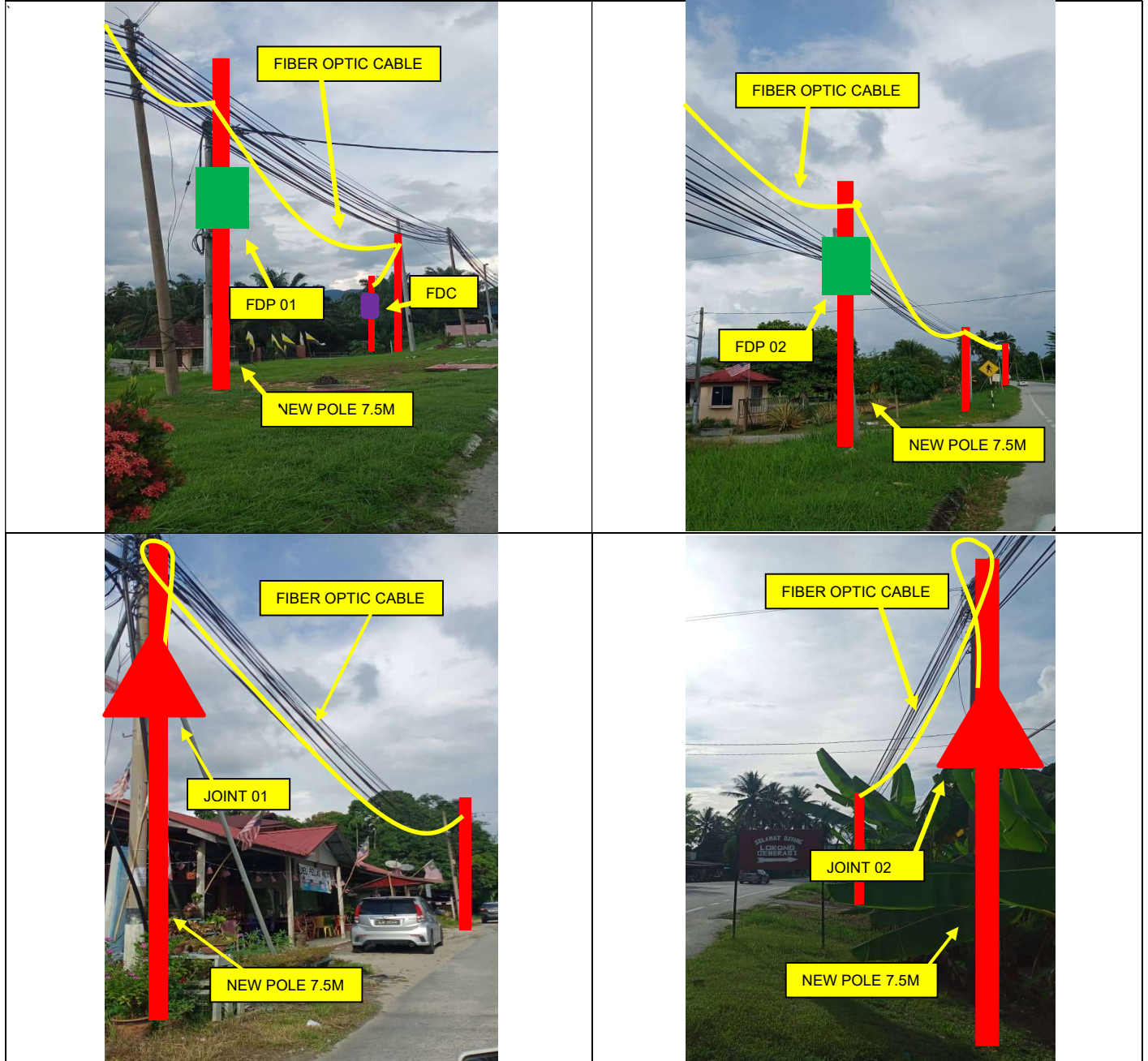


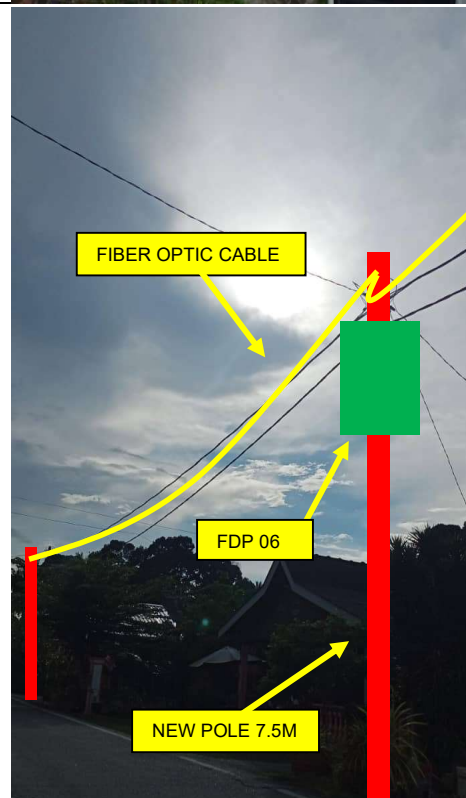
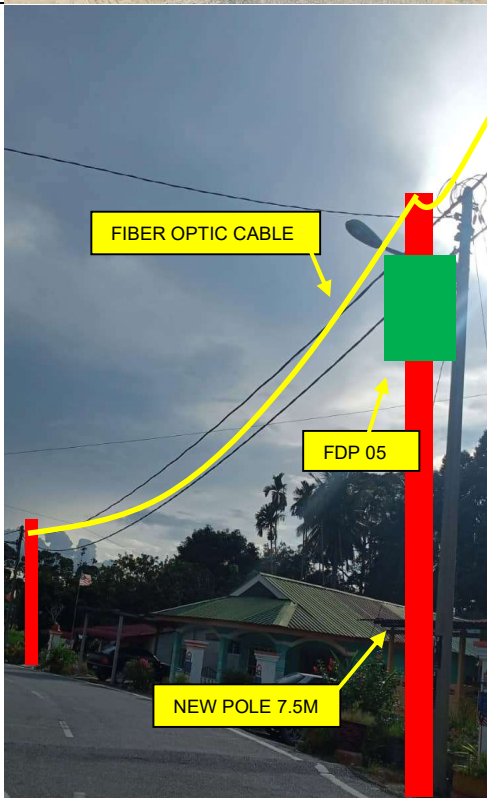
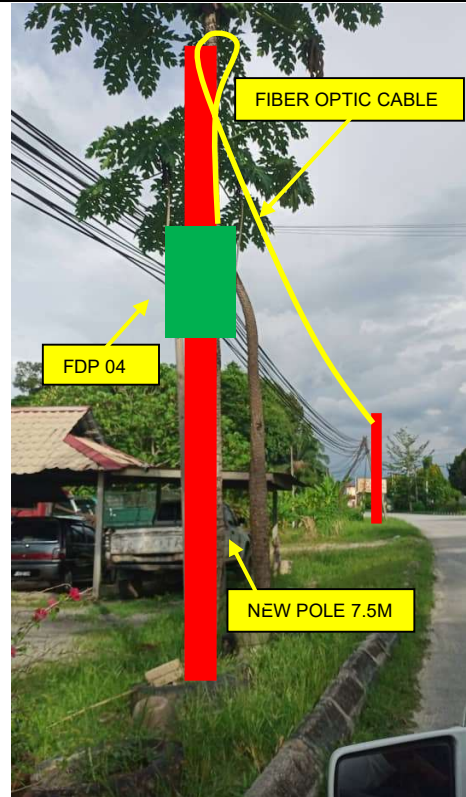
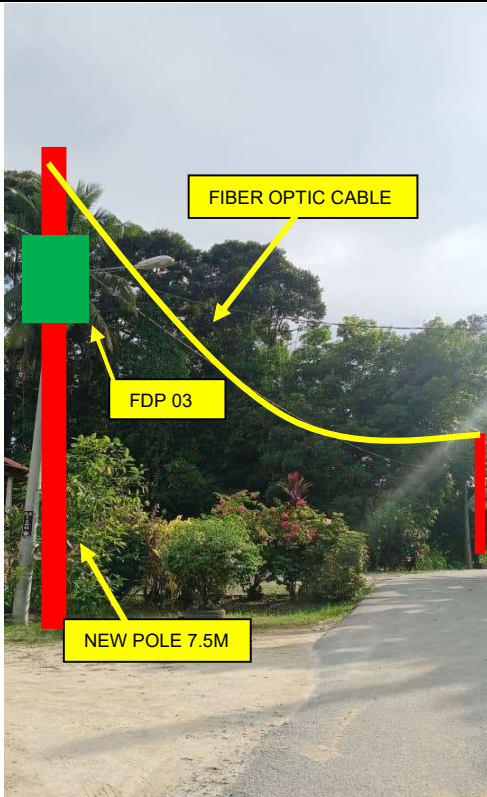
4.0 PROPOSED NEW POLE

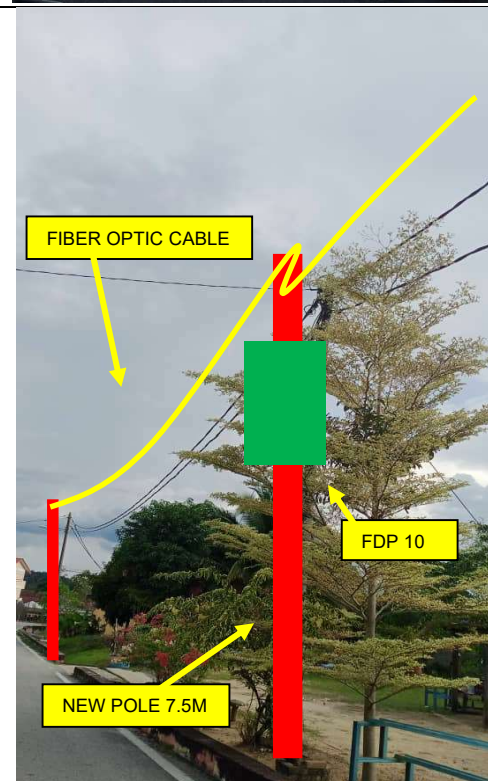
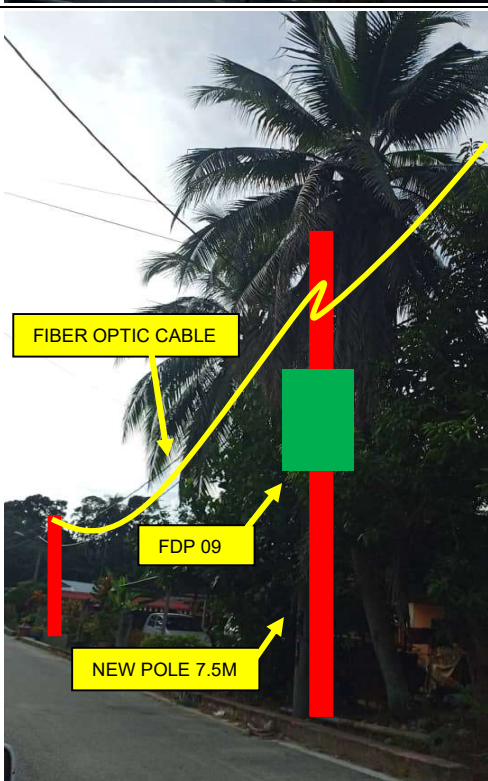
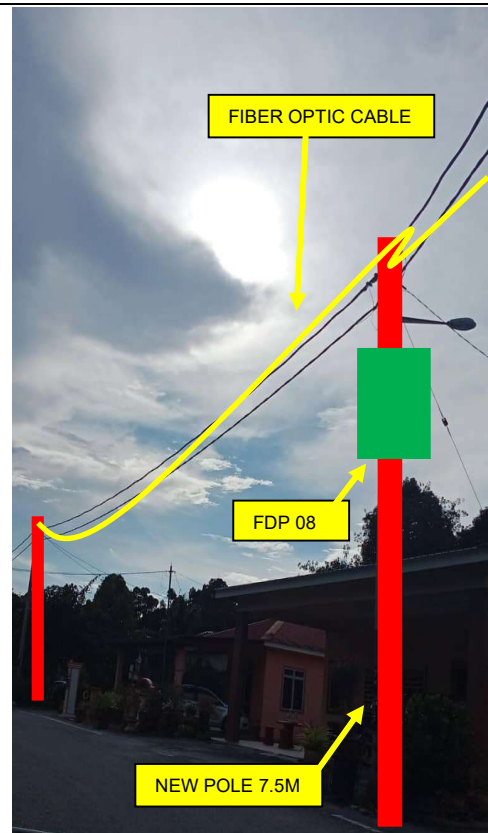
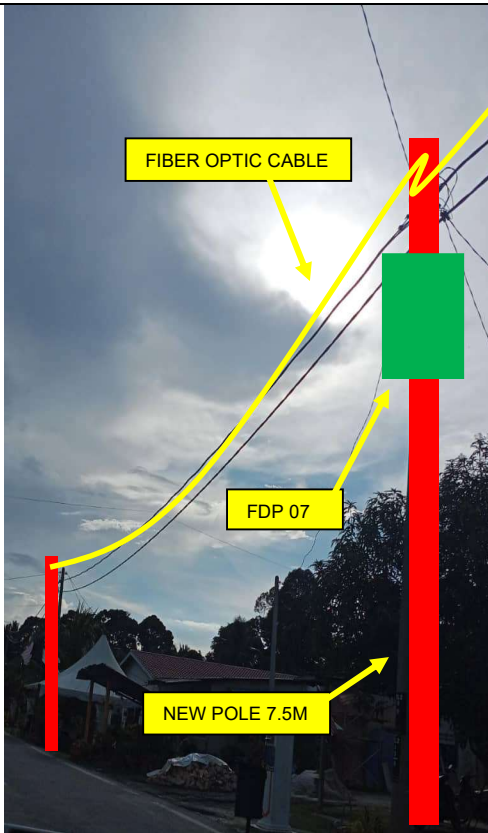
| No. | Pole Number | Distance (m) | Latitude | Longitude | Local Authority |
|-----|-------------|--------------|-----------|-------------|--------------------------|
| 1 | P001 | 35 | 4.9230250 | 101.0687280 | JKR Daerah Kuala Kangsar |
| 2 | P002 | 35 | 4.9228880 | 101.0686210 | JKR Daerah Kuala Kangsar |
| 3 | P003 | 35 | 4.9226880 | 101.0684380 | JKR Daerah Kuala Kangsar |
| 4 | P004 | 35 | 4.9224910 | 101.0682620 | JKR Daerah Kuala Kangsar |
| 5 | P005 | 35 | 4.9227290 | 101.0663821 | JKR Daerah Kuala Kangsar |
| 6 | P006 | 35 | 4.9222600 | 101.0677220 | JKR Daerah Kuala Kangsar |
| 7 | P007 | 35 | 4.9221750 | 101.0674530 | JKR Daerah Kuala Kangsar |
| 8 | P008 | 35 | 4.9263387 | 101.0655977 | JKR Daerah Kuala Kangsar |
| 9 | P009 | 35 | 4.9221680 | 101.0670150 | JKR Daerah Kuala Kangsar |
| 10 | P010 | 35 | 4.9221600 | 101.0667400 | JKR Daerah Kuala Kangsar |
| 11 | P011 | 35 | 4.9221340 | 101.0665800 | JKR Daerah Kuala Kangsar |
| 12 | P012 | 35 | 4.9221240 | 101.0662930 | JKR Daerah Kuala Kangsar |
| 13 | P013 | 35 | 4.9233630 | 101.0656847 | JKR Daerah Kuala Kangsar |
| 14 | P014 | 35 | 4.9220550 | 101.0656620 | JKR Daerah Kuala Kangsar |
| 15 | P015 | 35 | 4.9220350 | 101.0654310 | JKR Daerah Kuala Kangsar |
| 16 | P016 | 35 | 4.9220280 | 101.0651500 | JKR Daerah Kuala Kangsar |
| 17 | P017 | 35 | 4.9260506 | 101.0627918 | JKR Daerah Kuala Kangsar |
| 18 | P018 | 35 | 4.9219640 | 101.0645800 | JKR Daerah Kuala Kangsar |
| 19 | P019 | 35 | 4.9219430 | 101.0643220 | JKR Daerah Kuala Kangsar |
| 20 | P020 | 35 | 4.9219300 | 101.0640050 | JKR Daerah Kuala Kangsar |
| 21 | P021 | 35 | 4.9219530 | 101.0637450 | JKR Daerah Kuala Kangsar |
| 22 | P022 | 35 | 4.9221780 | 101.0643150 | JKR Daerah Kuala Kangsar |
| 23 | P023 | 35 | 4.9224366 | 101.0645138 | JKR Daerah Kuala Kangsar |
| 24 | P024 | 35 | 4.9226390 | 101.0647080 | JKR Daerah Kuala Kangsar |
| 25 | P025 | 35 | 4.9221160 | 101.0653460 | JKR Daerah Kuala Kangsar |
| 26 | P026 | 35 | 4.9224470 | 101.0654690 | JKR Daerah Kuala Kangsar |
| 27 | P027 | 35 | 4.9240571 | 101.0648187 | JKR Daerah Kuala Kangsar |
| 28 | P028 | 35 | 4.9228770 | 101.0657990 | JKR Daerah Kuala Kangsar |
| 29 | P029 | 35 | 4.9247041 | 101.0658879 | JKR Daerah Kuala Kangsar |
| 30 | P030 | 35 | 4.9233250 | 101.0661780 | JKR Daerah Kuala Kangsar |
| 31 | P031 | 35 | 4.9234430 | 101.0662840 | JKR Daerah Kuala Kangsar |
| 32 | P032 | 35 | 4.9236150 | 101.0664400 | JKR Daerah Kuala Kangsar |
| 33 | P033 | 35 | 4.9245298 | 101.0652851 | JKR Daerah Kuala Kangsar |
| 34 | P034 | 35 | 4.9237850 | 101.0670840 | JKR Daerah Kuala Kangsar |
| 35 | P035 | 35 | 4.9281582 | 101.0733202 | JKR Daerah Kuala Kangsar |
| 36 | P036 | 35 | 4.9238720 | 101.0676060 | JKR Daerah Kuala Kangsar |
| 37 | P037 | 35 | 4.9240310 | 101.0677140 | JKR Daerah Kuala Kangsar |
| 38 | P038 | 35 | 4.9243070 | 101.0676410 | JKR Daerah Kuala Kangsar |
| 39 | P039 | 35 | 4.9245610 | 101.0674870 | JKR Daerah Kuala Kangsar |
| 40 | P040 | 35 | 4.9247680 | 101.0673310 | JKR Daerah Kuala Kangsar |

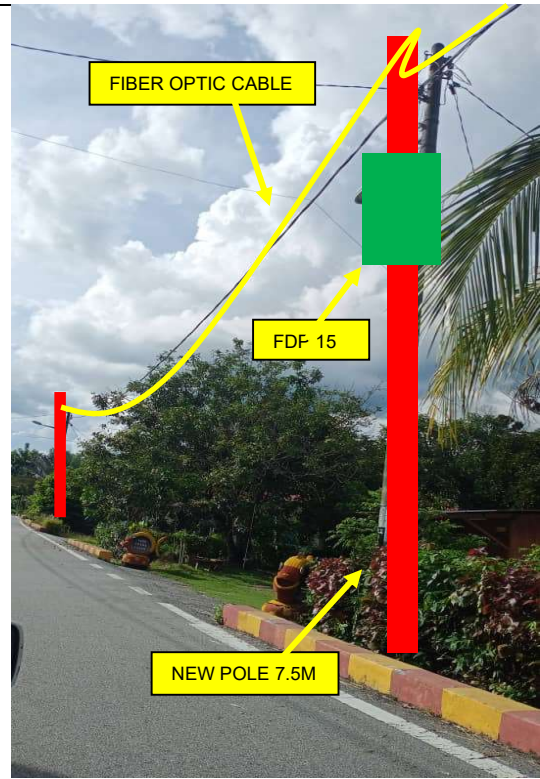
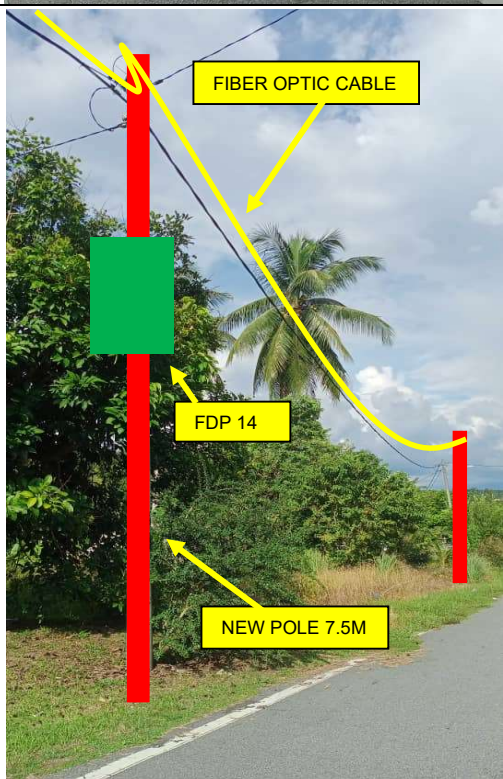
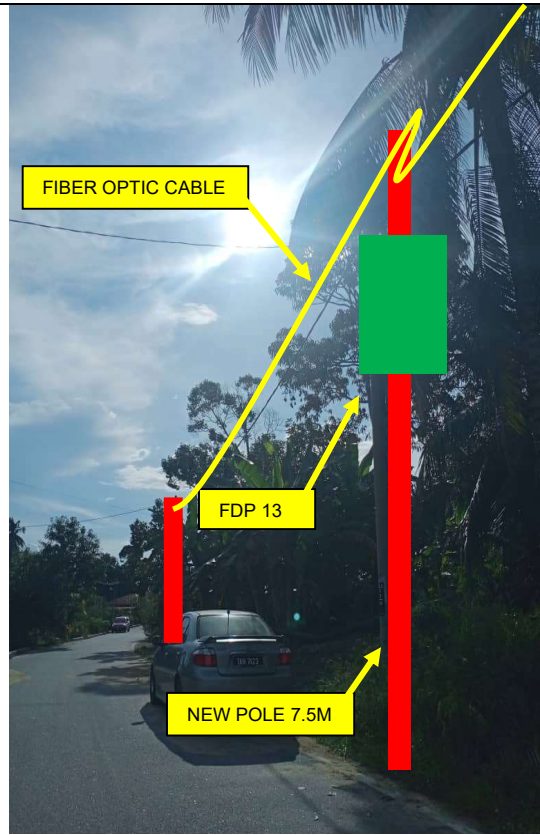
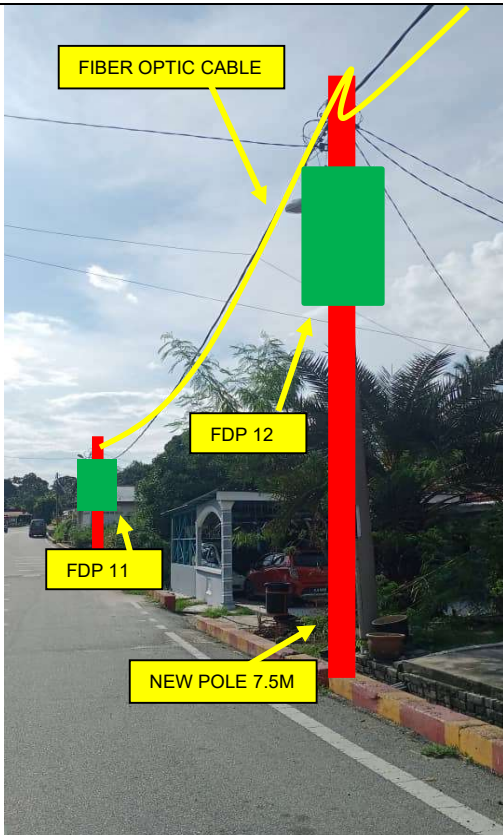
| No. | Pole Number | Distance (m) | Latitude | Longitude | Local Authority |
|-----|-------------|--------------|-----------|-------------|--------------------------|
| 41 | P041 | 35 | 4.9269430 | 101.0676423 | JKR Daerah Kuala Kangsar |
| 42 | P042 | 35 | 4.9246250 | 101.0667240 | JKR Daerah Kuala Kangsar |
| 43 | P043 | 35 | 4.9245720 | 101.0663690 | JKR Daerah Kuala Kangsar |
| 44 | P044 | 35 | 4.9245140 | 101.0659950 | JKR Daerah Kuala Kangsar |
| 45 | P045 | 35 | 4.9276705 | 101.0577443 | JKR Daerah Kuala Kangsar |
| 46 | P046 | 35 | 4.9244500 | 101.0653990 | JKR Daerah Kuala Kangsar |
| 47 | P047 | 35 | 4.9243080 | 101.0652600 | JKR Daerah Kuala Kangsar |
| 48 | P048 | 35 | 4.9240890 | 101.0650210 | JKR Daerah Kuala Kangsar |
| 49 | P049 | 35 | 4.9237970 | 101.0613095 | JKR Daerah Kuala Kangsar |
| 50 | P050 | 35 | 4.9237190 | 101.0644420 | JKR Daerah Kuala Kangsar |
| 51 | P051 | 35 | 4.9236210 | 101.0640810 | JKR Daerah Kuala Kangsar |
| 52 | P052 | 35 | 4.9250552 | 101.0670722 | JKR Daerah Kuala Kangsar |
| 53 | P053 | 35 | 4.9246220 | 101.0647600 | JKR Daerah Kuala Kangsar |
| 54 | P054 | 35 | 4.9247710 | 101.0644420 | JKR Daerah Kuala Kangsar |
| 55 | P055 | 35 | 4.9365600 | 101.0572649 | JKR Daerah Kuala Kangsar |
| 56 | P056 | 35 | 4.9250560 | 101.0638460 | JKR Daerah Kuala Kangsar |
| 57 | P057 | 35 | 4.9251520 | 101.0636200 | JKR Daerah Kuala Kangsar |
| 58 | P058 | 35 | 4.9272876 | 101.0642940 | JKR Daerah Kuala Kangsar |
| 59 | P059 | 35 | 4.9248660 | 101.0620017 | JKR Daerah Kuala Kangsar |
| 60 | P060 | 35 | 4.9248180 | 101.0631300 | JKR Daerah Kuala Kangsar |
| 61 | P061 | 35 | 4.9245550 | 101.0628100 | JKR Daerah Kuala Kangsar |
| 62 | P062 | 35 | 4.9250630 | 101.0671500 | JKR Daerah Kuala Kangsar |
| 63 | P063 | 35 | 4.9253600 | 101.0669690 | JKR Daerah Kuala Kangsar |
| 64 | P064 | 35 | 4.9256870 | 101.0667590 | JKR Daerah Kuala Kangsar |
| 65 | P065 | 35 | 4.9254920 | 101.0661420 | JKR Daerah Kuala Kangsar |
| 66 | P066 | 35 | 4.9230331 | 101.0655368 | JKR Daerah Kuala Kangsar |
| 67 | P067 | 35 | 4.9254740 | 101.0658050 | JKR Daerah Kuala Kangsar |
| 68 | P068 | 35 | 4.9256410 | 101.0654350 | JKR Daerah Kuala Kangsar |
| 69 | P069 | 35 | 4.9261740 | 101.0652954 | JKR Daerah Kuala Kangsar |
| 70 | P070 | 35 | 4.9262790 | 101.0663760 | JKR Daerah Kuala Kangsar |
| 71 | P071 | 35 | 4.9244760 | 101.0650871 | JKR Daerah Kuala Kangsar |
| 72 | P072 | 35 | 4.9262120 | 101.0657270 | JKR Daerah Kuala Kangsar |
| 73 | P073 | 35 | 4.9261430 | 101.0653550 | JKR Daerah Kuala Kangsar |
| 74 | P074 | 35 | 4.9260840 | 101.0649750 | JKR Daerah Kuala Kangsar |
| 75 | P075 | 35 | 4.9260806 | 101.0623199 | JKR Daerah Kuala Kangsar |
| 76 | P076 | 35 | 4.9262300 | 101.0642980 | JKR Daerah Kuala Kangsar |
| 77 | P077 | 35 | 4.9263160 | 101.0639130 | JKR Daerah Kuala Kangsar |

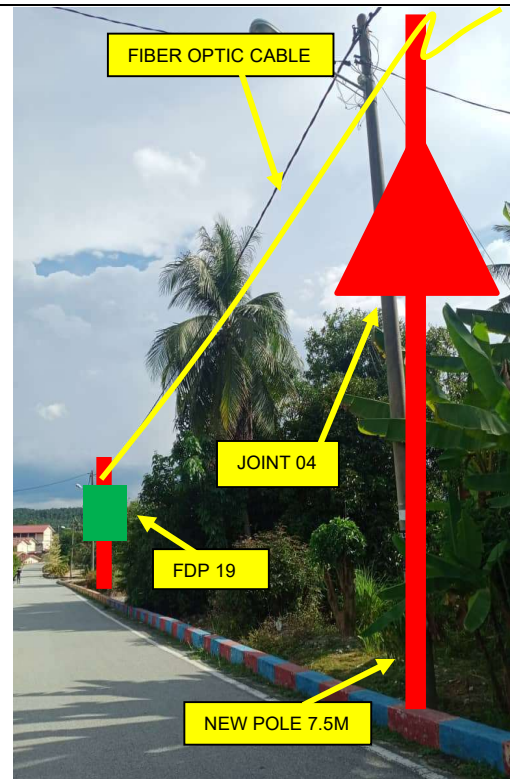
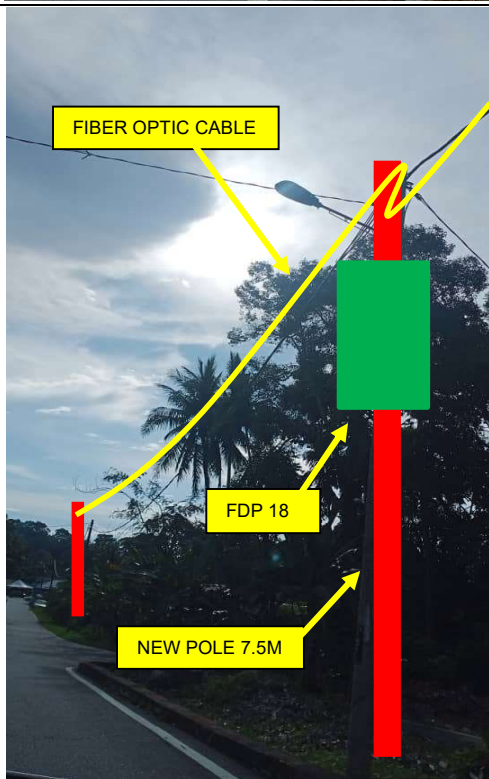
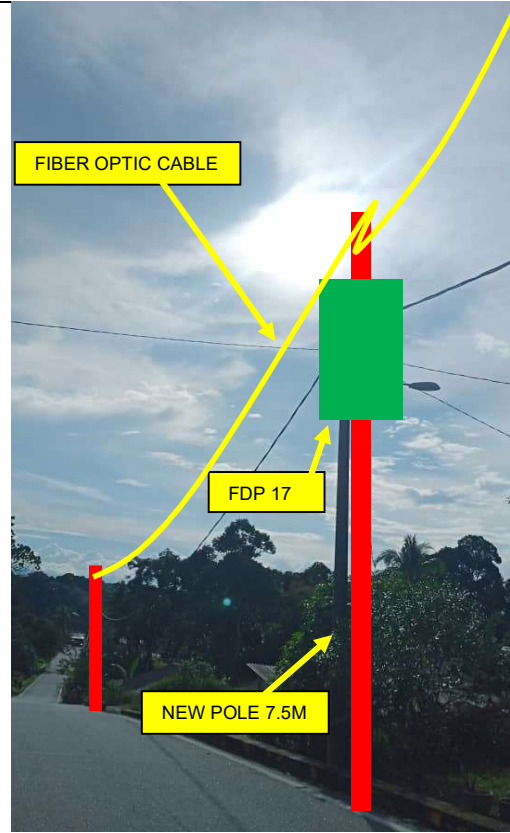
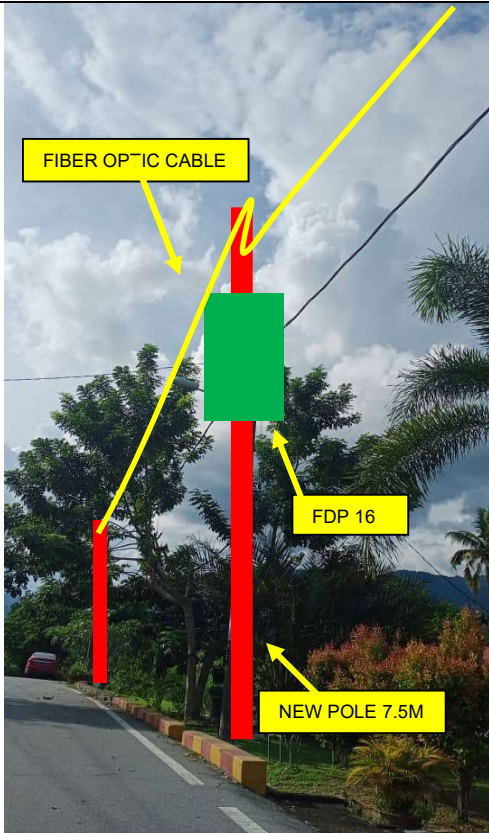
5.0 SITE PHOTOS - PROPOSED NEW POLE

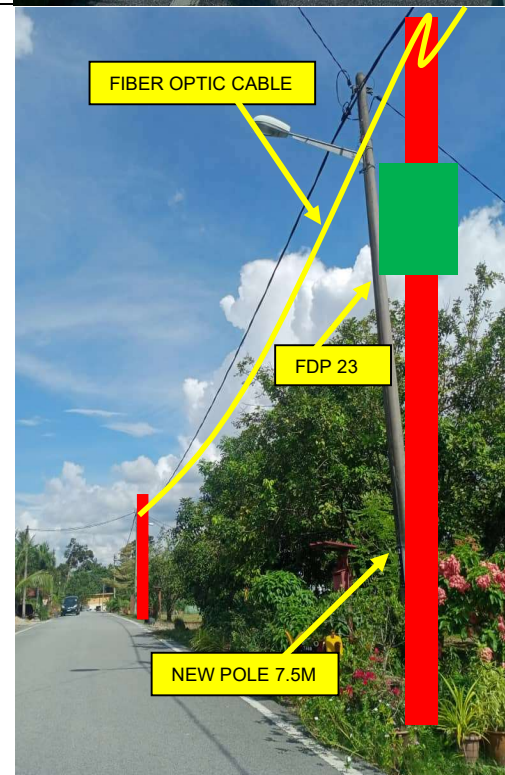
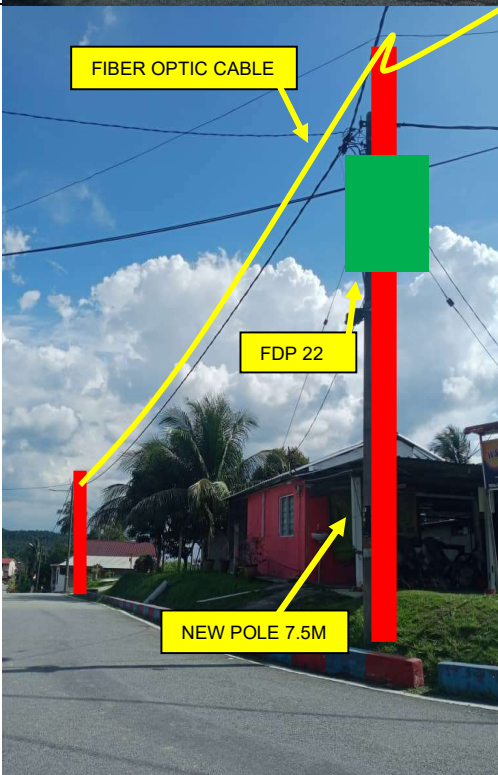
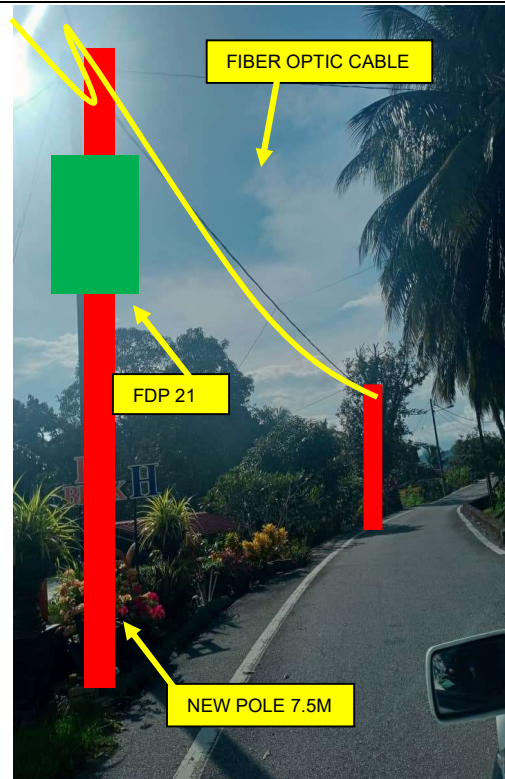
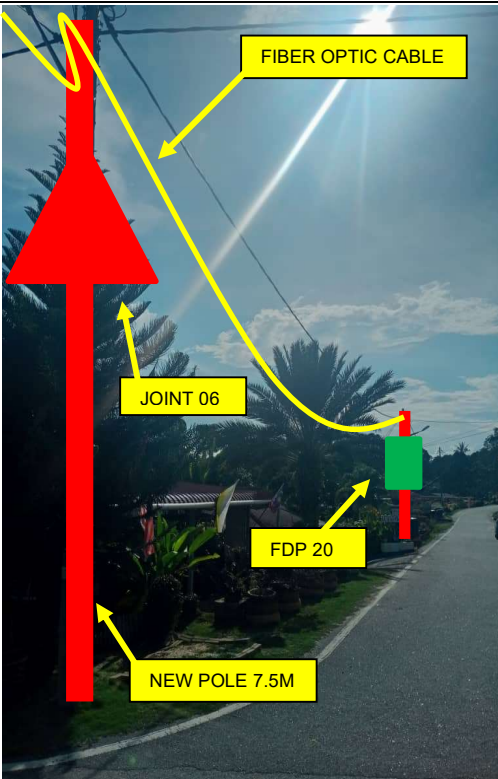












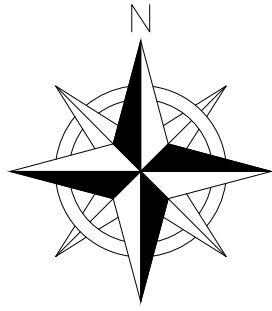


PROJEK PENYEDIAAN DAN PENYELENGGARAAN POINT OF PRESENCE (POP) FASA 2: HAB INFRASTRUKTUR GENTIAN OPTIK BERHAMPIRAN DENGAN SEKOLAH, KAWASAN PERINDUSTRIAN, PREMIS KERAJAAN DAN KOMUNITI SEKITARNYA OLEH KEMENTERIAN KOMUNIKASI MALAYSIA – ZON UTARA (KKMM.400-11/17/132(1))



6.0 3rd PARTIES DEPENDENCIES

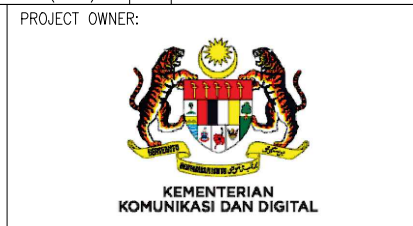
| NO | LOCAL COUNCIL / AUTHORITY | REMARK |
|----|---------------------------|--------|
| 1 | Majlis | - |
| 2 | JKR | 2,695m |



| | | | | | | | | | |
|----------|------------------------------|-------------------------|---------------------|----|-------------------------|-------|--------------------------|------|-------------|
| 12C FOC | Installed 1:4 / 1:8 splitter | Existing TNB Pole | Pole Ring | 22 | Micro-Trenching (Meter) | # | Active Outdoor Numbering | CL01 | Closure NO. |
| 24C FOC | FDC | Installed Riser | New Manhole (PIT) | | Temporary Infra (Meter) | NBD# | FDC NO. | DP1 | FDP NO. |
| 48C FOC | Closure | FDP with (1:8) splitter | New Manhole(JRC7) | 22 | FDP Boundary | MH1 | MH NO. | | |
| 96C FOC | Installed Pole (9m) | Suspension | Existing Manhole | | HDD (Meter) | TKS-1 | Existing TNB Pole NO. | | |
| 144C FOC | Installed Pole (7.5m) | Tension | Loop / Coil (Meter) | | Open Cut (Meter) | P001 | New Pole NO. | | |

ACTUAL HOMEPASS : 176

KEY PLAN:



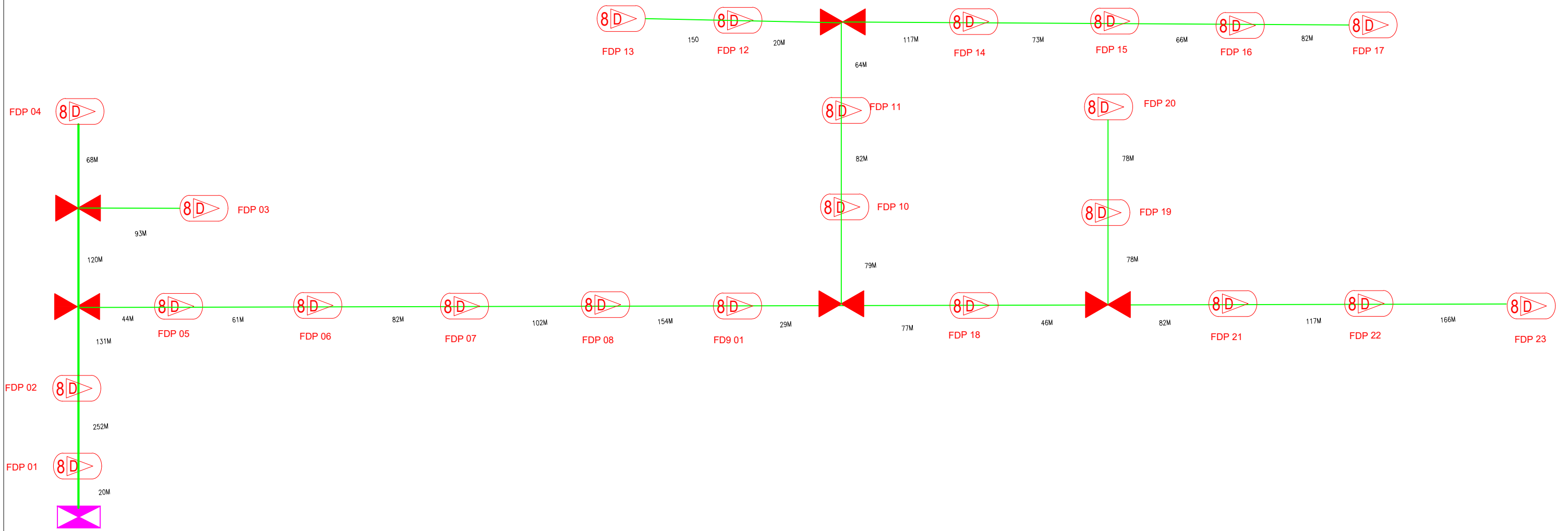
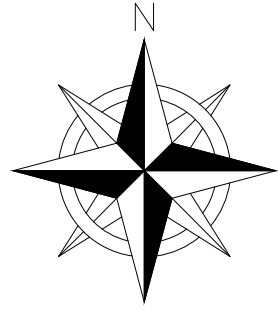
SUB-CONTRACTOR:

PROJECT TITLE:
CONTRACT FOR THE PROVISION OF SUPPLY, INSTALLATION AND COMMISSIONING OF FTTX NETWORK INFRASTRUCTURE - POP 2 PROJECT (D-SIDE) - ABC4034 - SK LASAH

DRAWING TITLE:
CONSTRUCTION DRAWING -

PROJECT PHASE:

| | |
|--|-------------------------|
| Design By : M | Date : 18 NOVEMBER 2024 |
| Drawn By : M | Scale : |
| Checked By : | Job Number : |
| DRAWING NUMBER : | Sheet : 1 / 1 |
| THIS PRINT AND ITS COPYRIGHT ARE THE PROPERTY OF | |
| Size : | |



| | | | | | | | | | | | | |
|----------|-------|------------------------------|----|-------------------------|----|---------------------|----|-------------------------|-------|--------------------------|------|-------------|
| 12C FOC | | Installed 1:4 / 1:8 splitter | | Existing TNB Pole | | Pole Ring | 22 | Micro-Trenching (Meter) | # | Active Outdoor Numbering | CL01 | Closure NO. |
| 24C FOC | 2695m | FDC | 1 | Installed Riser | | New Manhole (PIT) | | Temporary Infra (Meter) | NBD# | FDC NO. | DP1 | FDP NO. |
| 48C FOC | | Closure | 5 | FDP with (1:8) splitter | 22 | New Manhole(JRC7) | | FDP Boundary | MH1 | MH NO. | | |
| 96C FOC | | Installed Pole (9m) | 1 | Suspension | | Existing Manhole | | HDD (Meter) | TKS-1 | Existing TNB Pole NO. | | |
| 144C FOC | | Installed Pole (7.5m) | 77 | Tension | | Loop / Coil (Meter) | | Open Cut (Meter) | P001 | New Pole NO. | | |

ACTUAL HOMEPASS : 176

| | | | | | | | |
|-----------|----------------|------------------|-----------------|---|------------------------|--|-------------------------|
| KEY PLAN: | PROJECT OWNER: | MAIN CONTRACTOR: | SUB-CONTRACTOR: | PROJECT TITLE: | DRAWING TITLE: | Design By : M | Date : 18 NOVEMBER 2024 |
| | | | | CONTRACT FOR THE PROVISION OF SUPPLY, INSTALLATION AND COMMISSIONING OF FTTX NETWORK INFRASTRUCTURE - POP 2 PROJECT (D-SIDE) - ABC4034 - SK LASAH | CONSTRUCTION DRAWING - | Drawn By : M | Scale : |
| | | | | | PROJECT PHASE: | Checked By : | Job Number : |
| | | | | | | DRAWING NUMBER : | Sheet : 1 / 1 |
| | | | | | | THIS PRINT AND ITS COPYRIGHT ARE THE PROPERTY OF | |