

E/SIDE PMU GERIK-BSIA-BLIN – Technical Proposal

| | |
|-----------------|---|
| Company Name | : KNZ ENGINEERING SDN. BHD. |
| Company Address | : NO.6B, JALAN MERU IMPIAN A1, HALAMAN MERU IMPIAN, 30020 IPOH, PERAK |
| Prepared By | : AZHAN HARIS |
| Date | : 21/07/2025 |

POINT A



POINT B (1)



POINT B (2)



Starting Point

| | | |
|----------------------|---|-----------------------------|
| Site / Boundary Name | : | KAMPUNG PADANG KUNYIT |
| Address | : | PMU GERIK |
| District | : | GERIK |
| Postcode | : | 33300 |
| State | : | PERAK |
| GPS Coordinate | : | 5.41500002616796, 101.12835 |
| LRD | : | A |

End Point (1)

| | | |
|----------------------|---|---------------------------------------|
| Site / Boundary Name | : | KAMPUNG KERUNAI |
| Address | : | SEKOLAH KEBANGSAAN KERUNAI |
| District | : | GERIK |
| Postcode | : | 33310 |
| State | : | PERAK |
| GPS Coordinate | : | 5.515415301535451, 101.12713480313725 |
| LRD | : | B |

End Point (2)

| | | |
|----------------------|---|---------------------------------------|
| Site / Boundary Name | : | KAMPUNG BENDANG RIANG |
| Address | : | MASJID KAMPUNG BANDARIANG |
| District | : | GERIK |
| Postcode | : | 33300 |
| State | : | PERAK |
| GPS Coordinate | : | 5.452428631186216, 101.19378015614727 |
| LRD | : | B |

Work Summary

| No | Proposed Distance and Method | Unit | Qty |
|----|---------------------------------------|------|------------|
| 1 | Horizontal Directional Drilling (HDD) | m | 310 |
| 2 | Carriage Way Open trench (CW) | m | 0 |
| 3 | Grass Verge Open Trenching (GV) | m | 150 |
| 4 | Micro trenching (MT) | m | 0 |
| | Total | | 460 |

| | Other Information | Unit | Qty |
|---|--|------|-----------|
| 1 | Proposed Manhole | EA | 4 |
| 2 | Proposed Pole | EA | 44 |
| 3 | Joint Closure | EA | 7 |
| 4 | Estimated time required for completion | days | 60 |

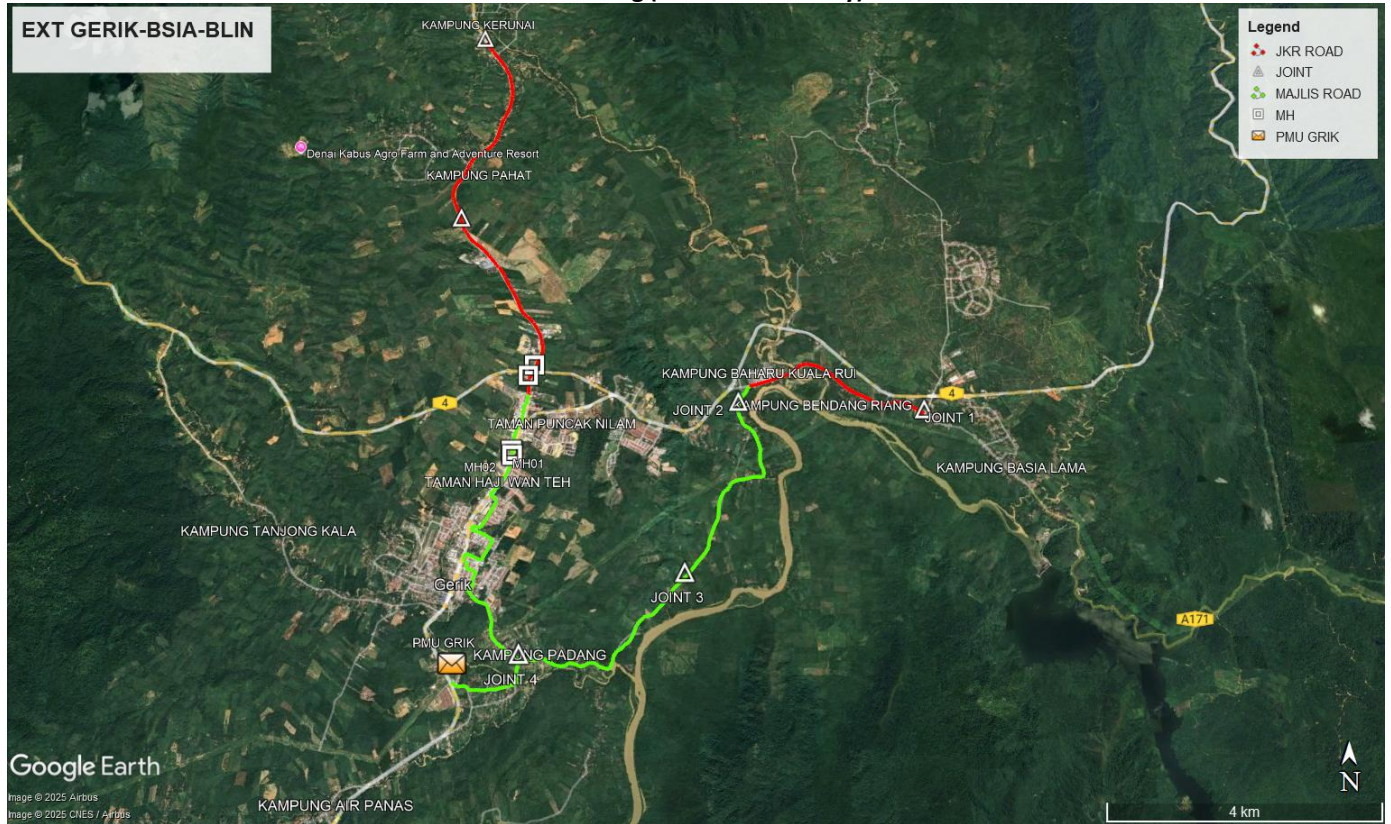
Local Authority Summary

1. Daerah Gerik

| Bil | Items | Owner | Quantity | Distance |
|--------------|-------------------|-----------------------|-----------------|-----------------|
| 1 | HDD | JKR | 2 | 310m |
| | | Majlis | - | - |
| | | Estate / Private Land | - | - |
| 2 | New Pole | JKR | 6pcs | 150m |
| | | Majlis | 38pcs | 1,150m |
| | | Estate / Private Land | - | - |
| 3 | Existing TNB Pole | JKR | 330pcs | 10,610m |
| | | Majlis | 361pcs | 14,127m |
| | | Estate / Private Land | - | - |
| Total | | | | 26,347m |

(KKMM.400-11/17/132(1))

Site Plan – KMZ Routing (All Local Authority)

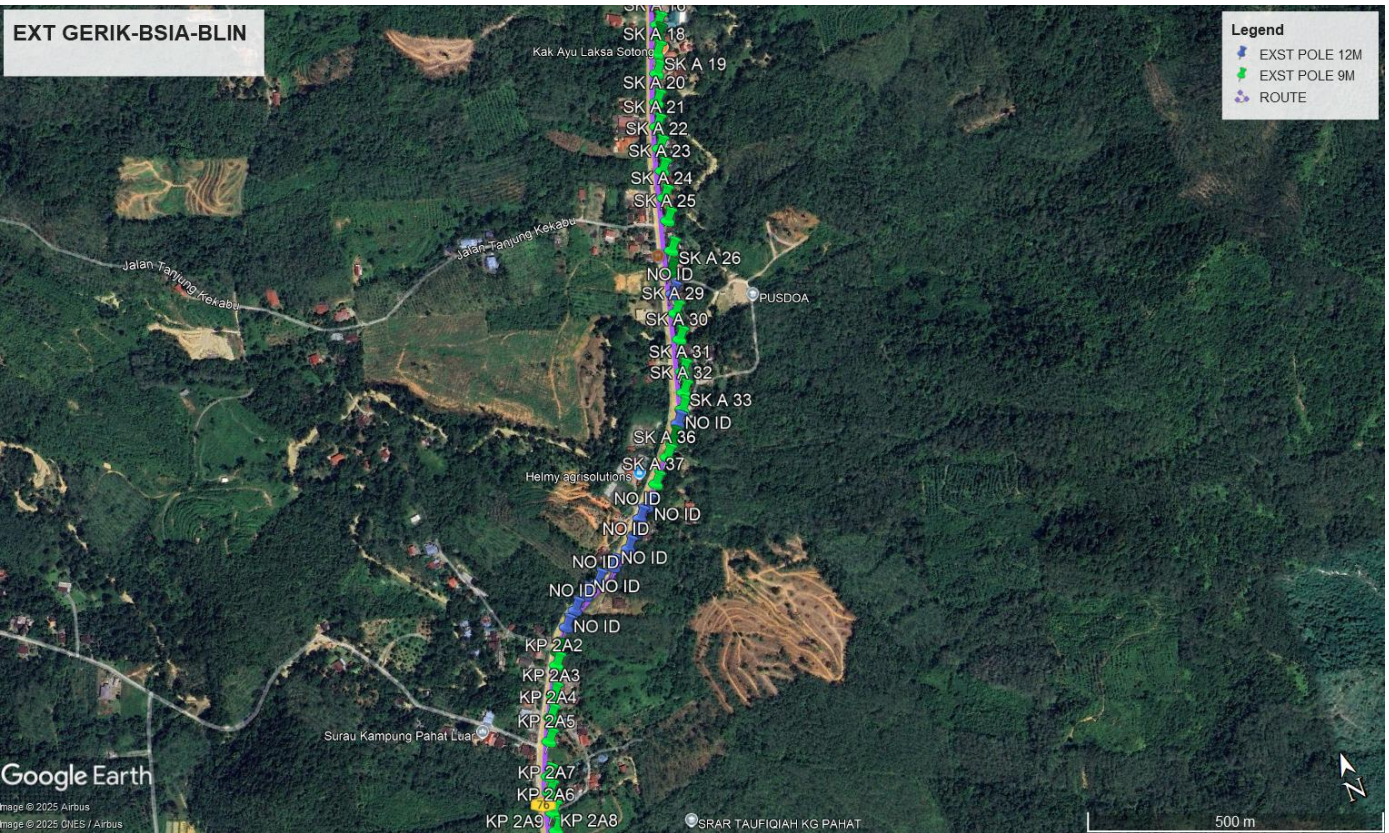
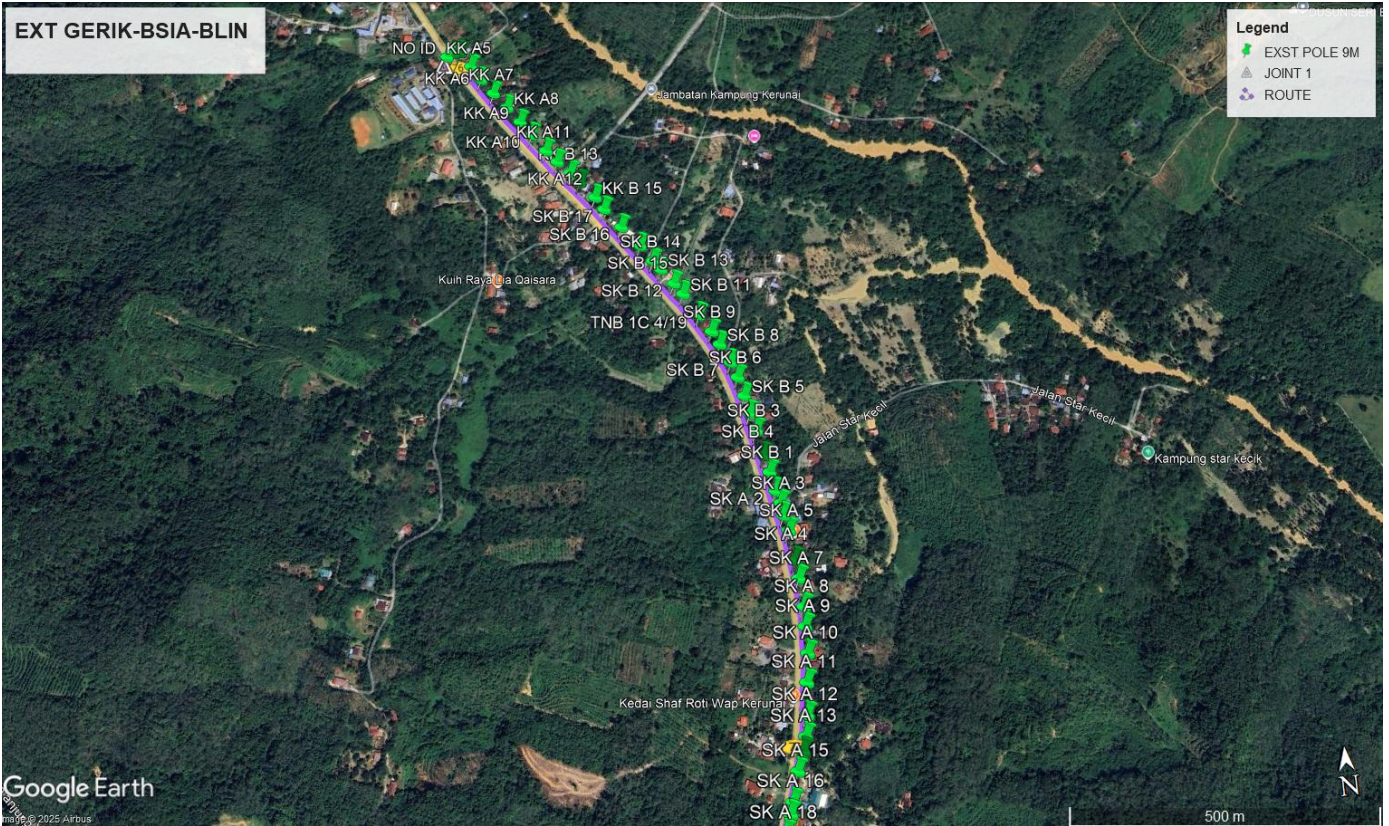


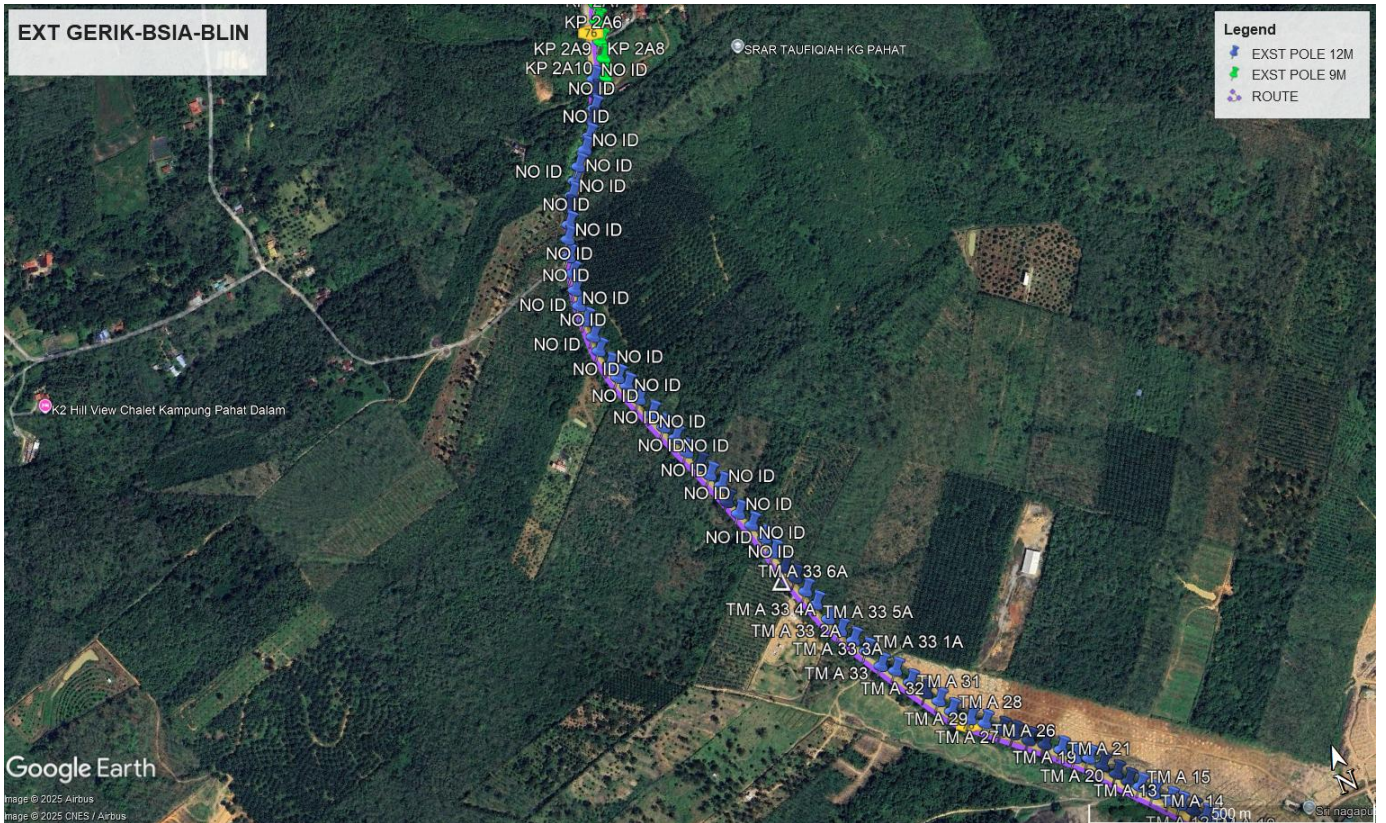
Green Colour – Estate/Private Land

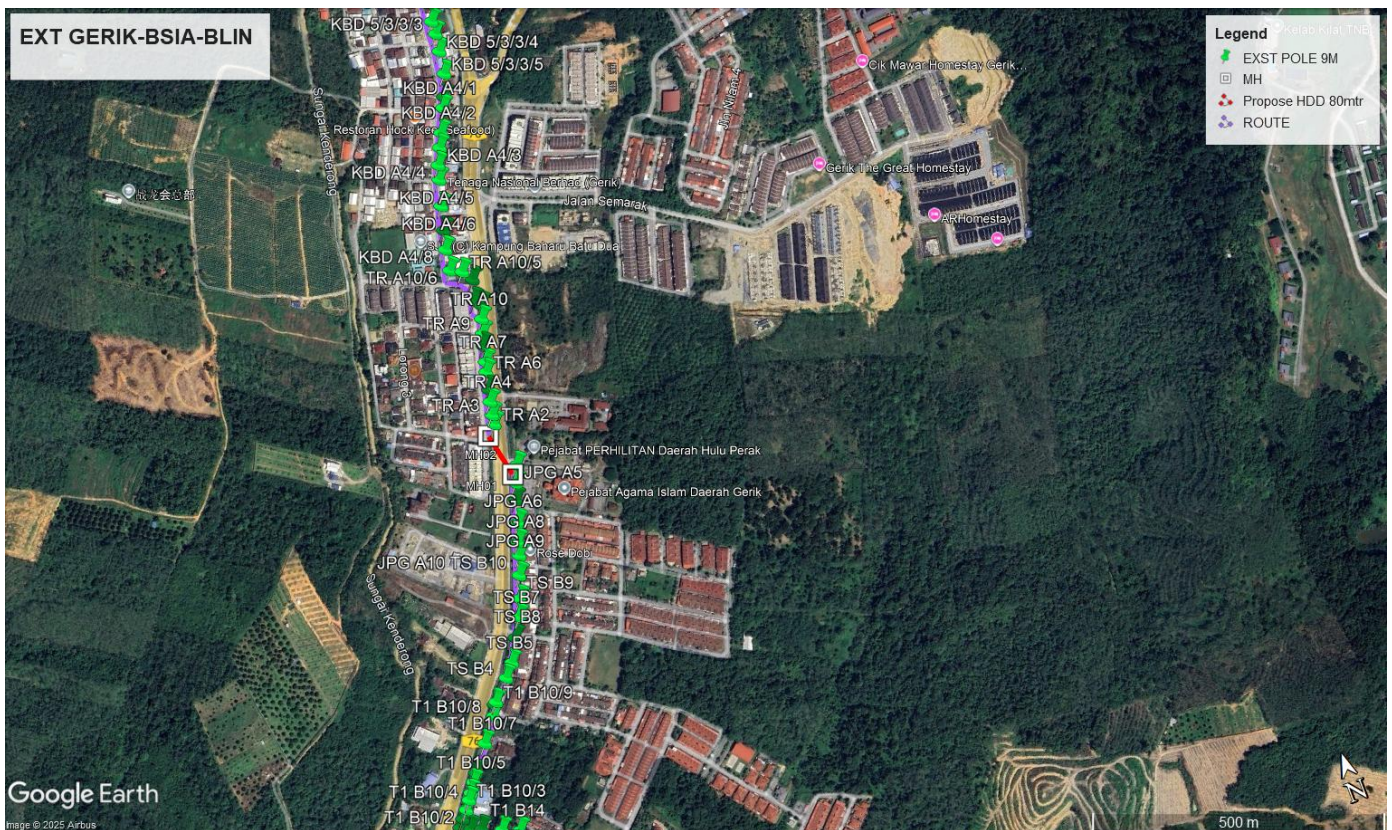
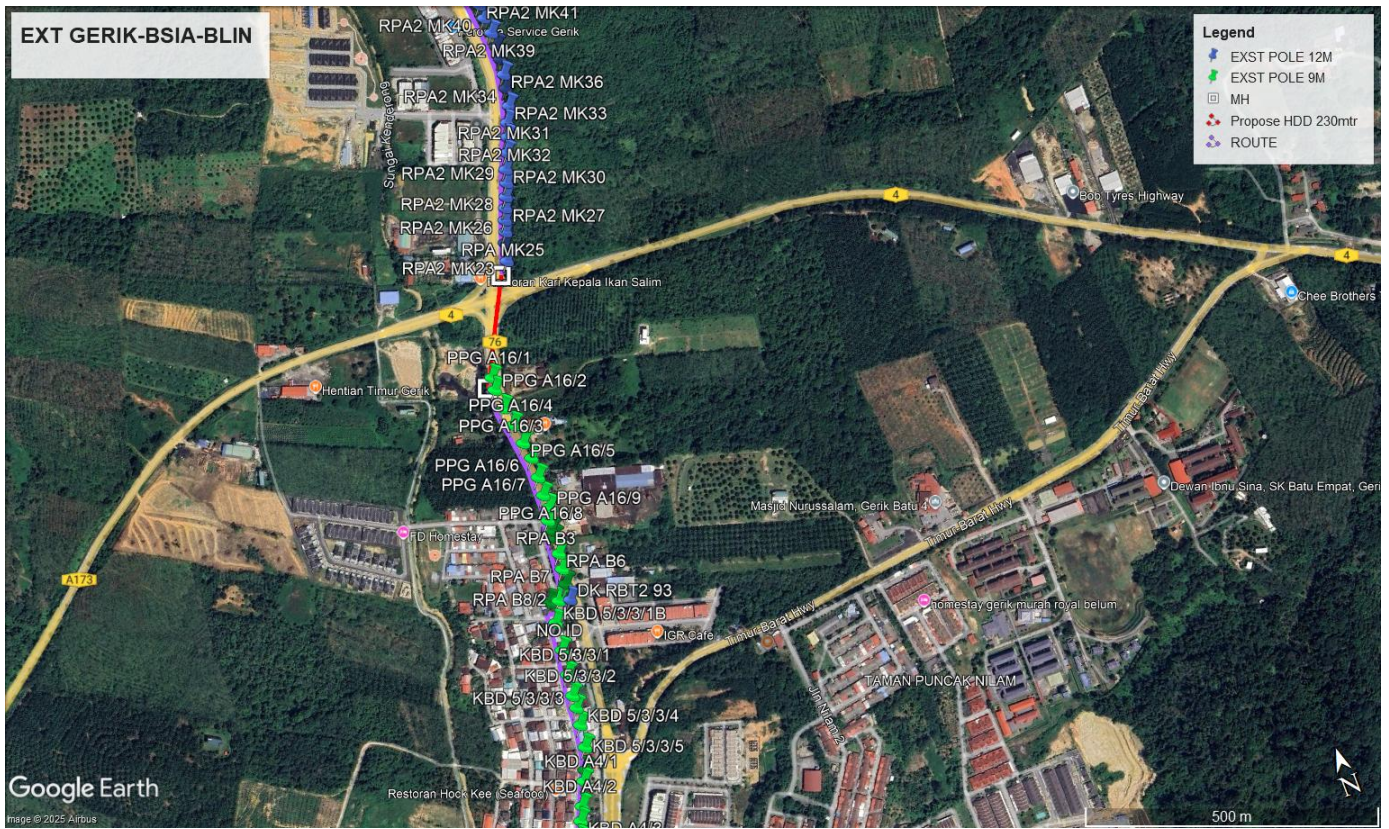
Red Colour – JKR Road

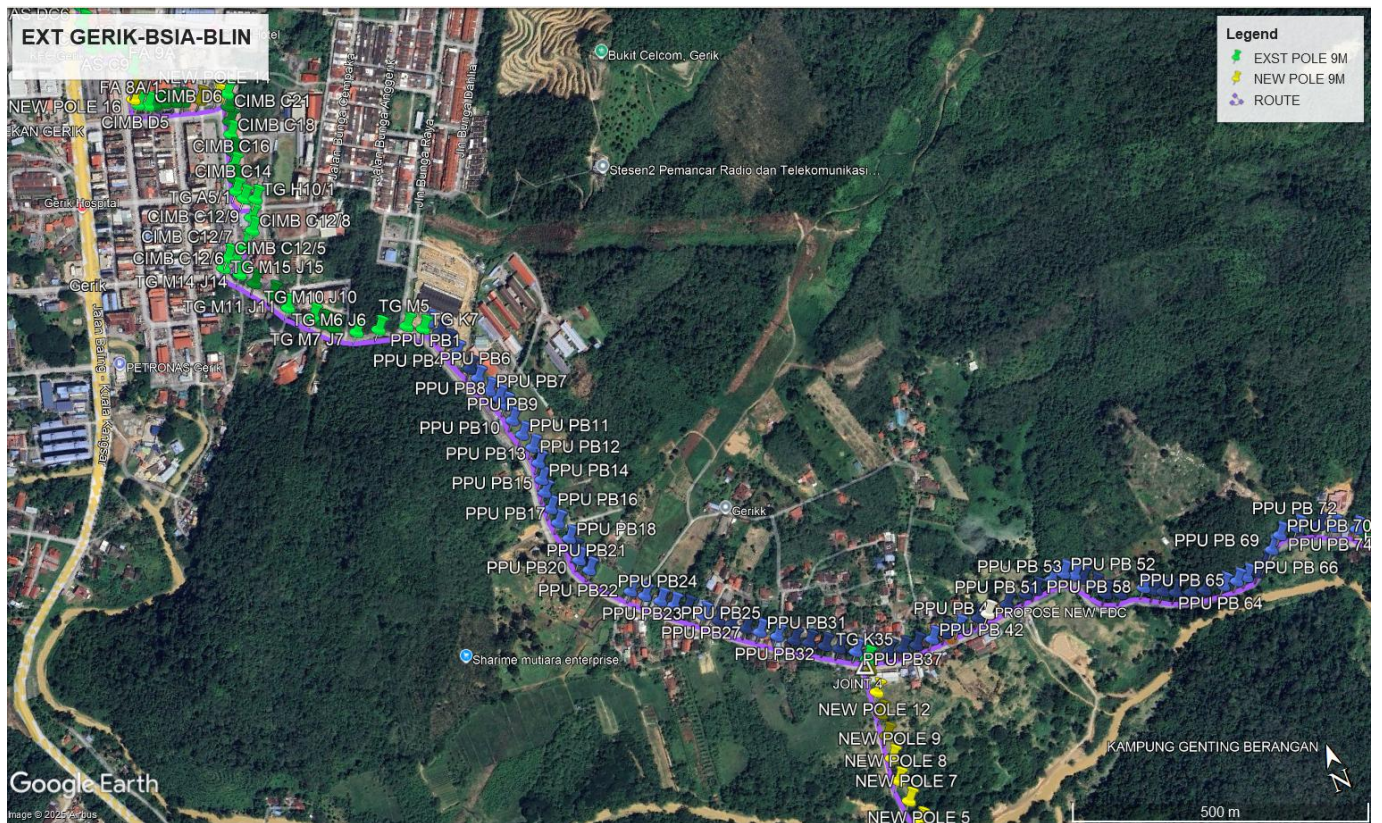
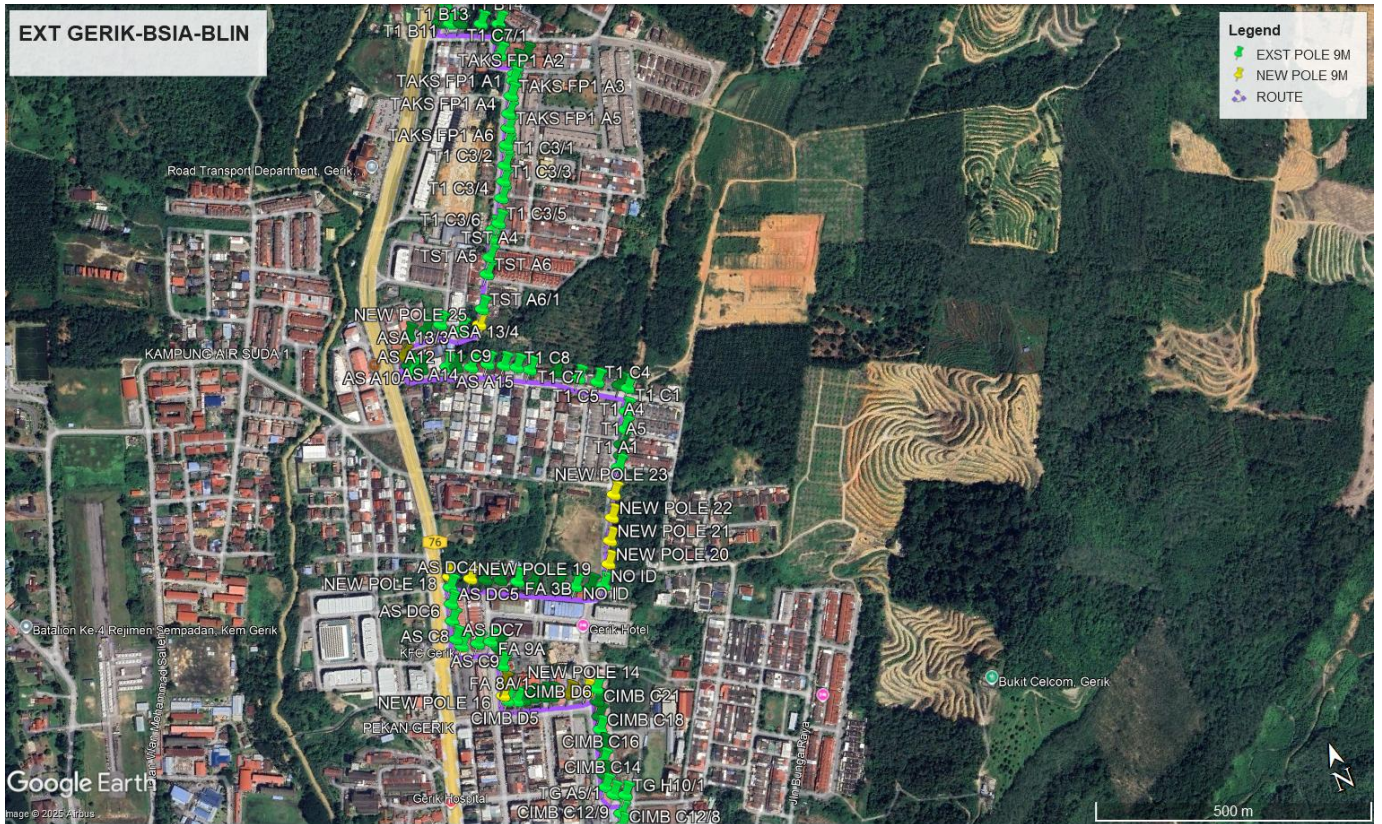
Site Plan – KMZ Routing (All site area)

Route 1

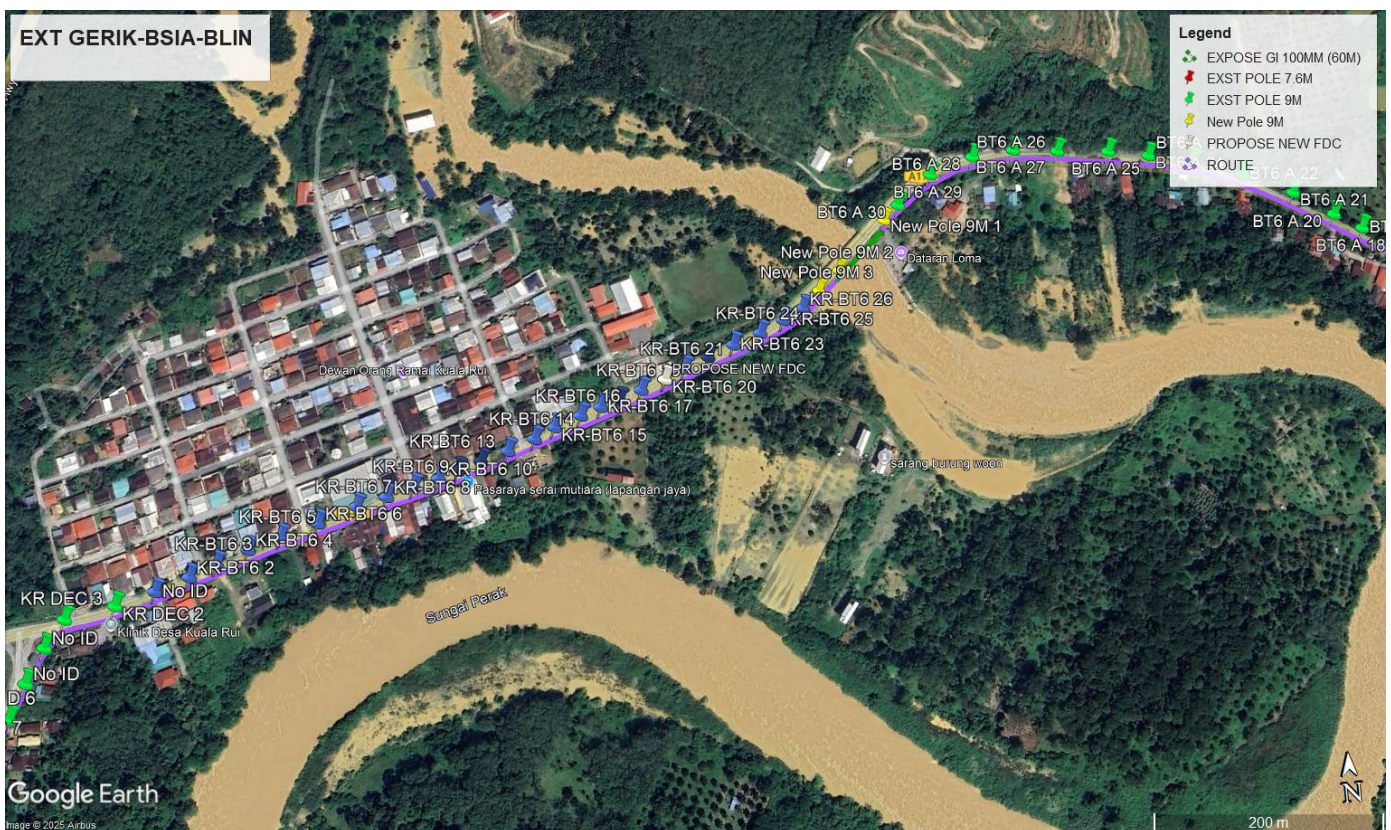


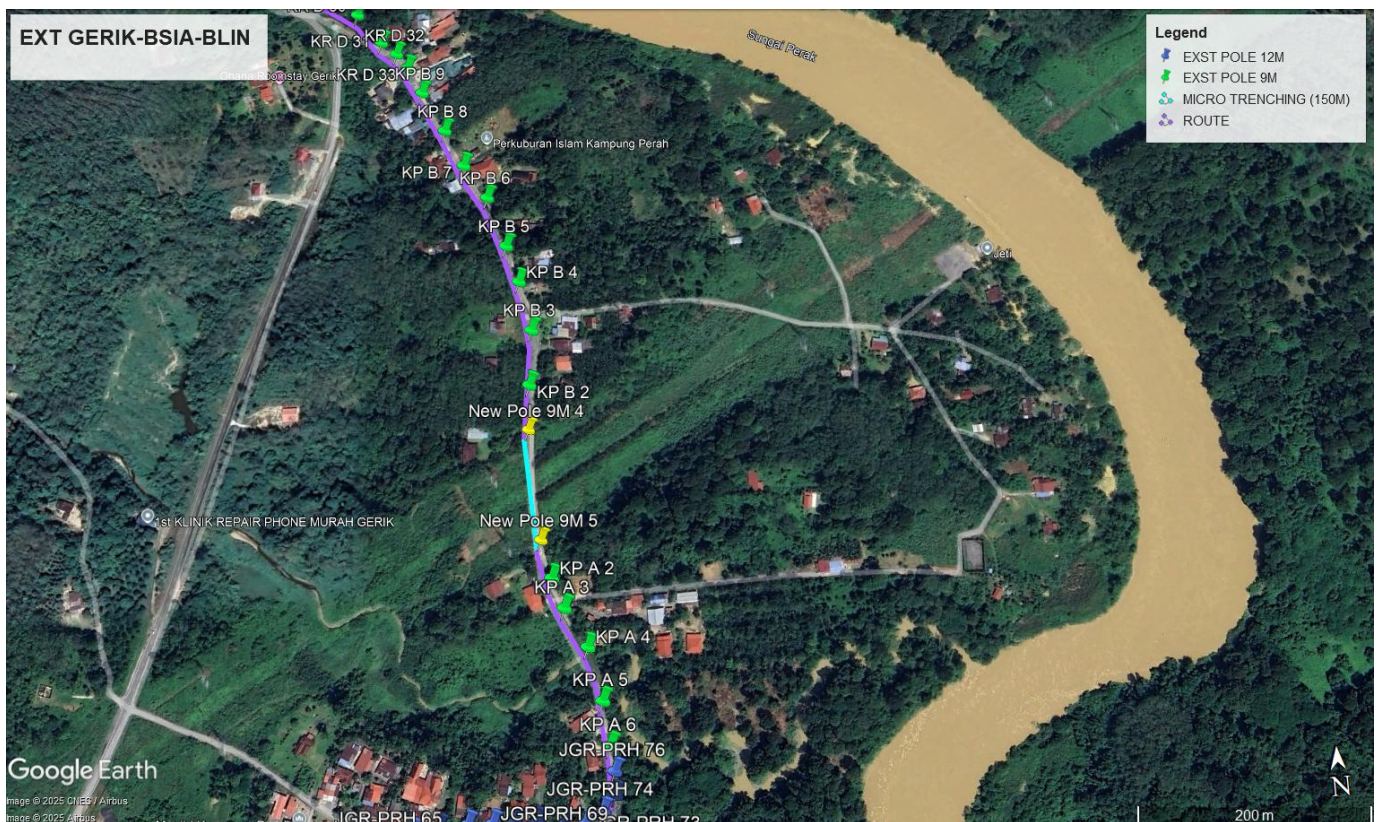
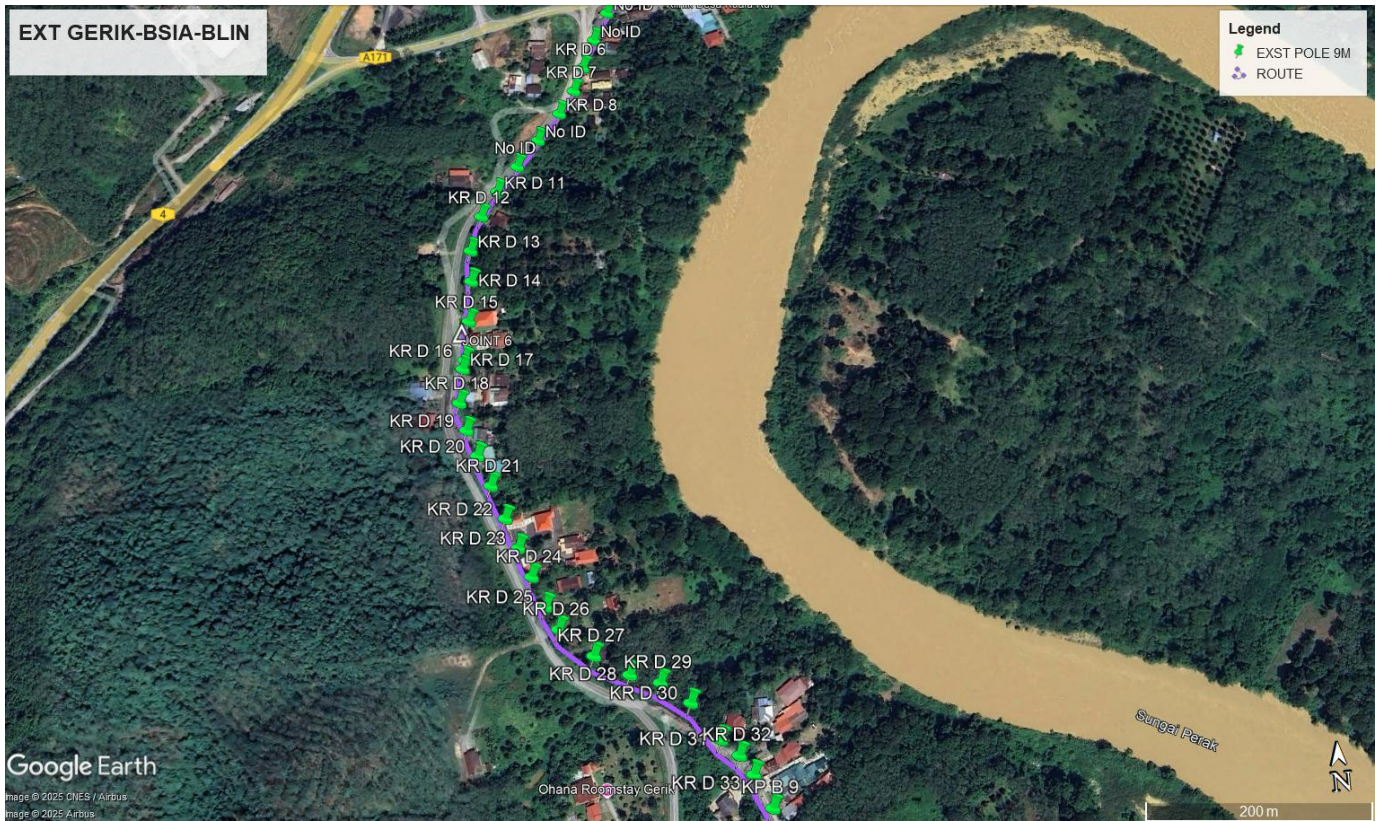


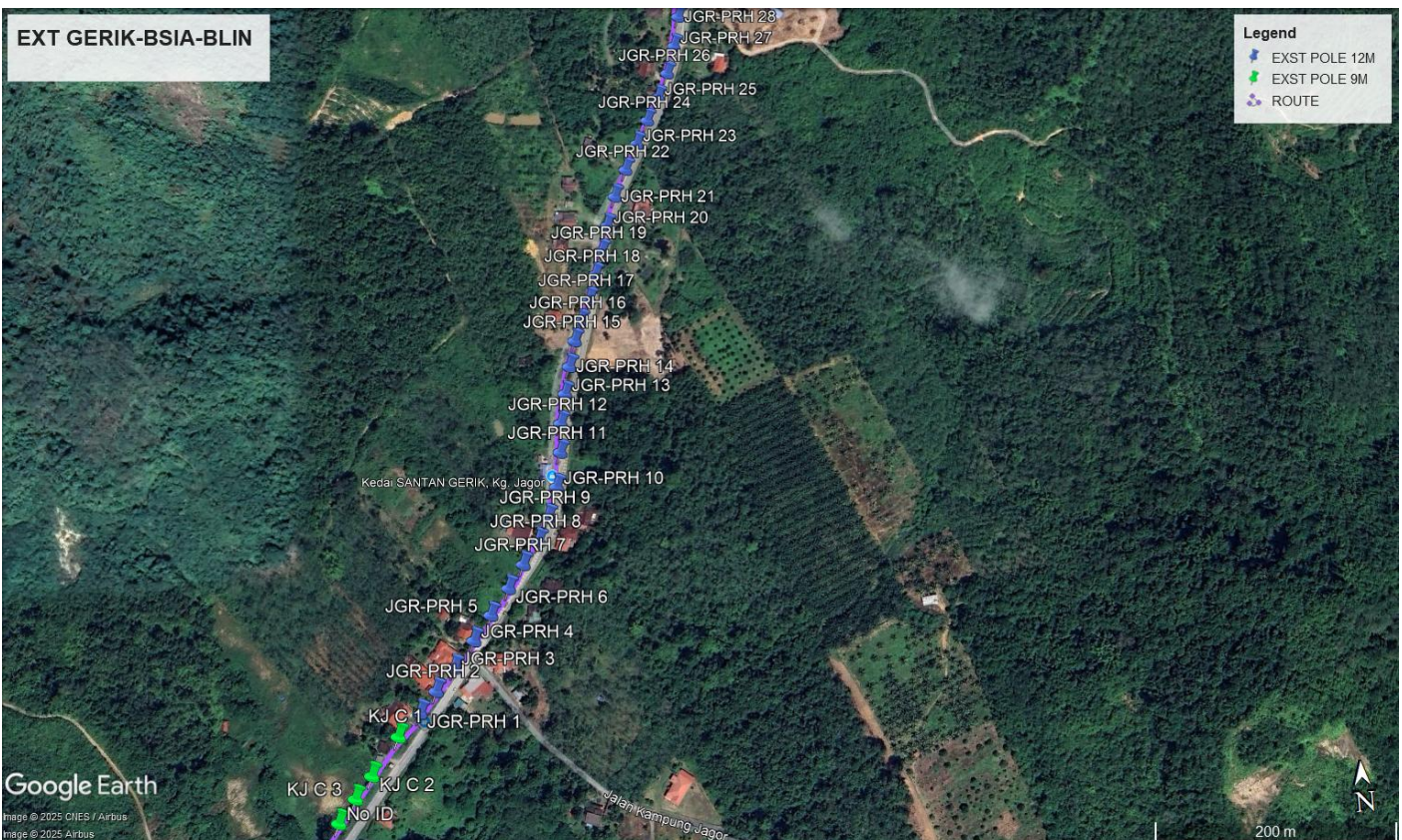
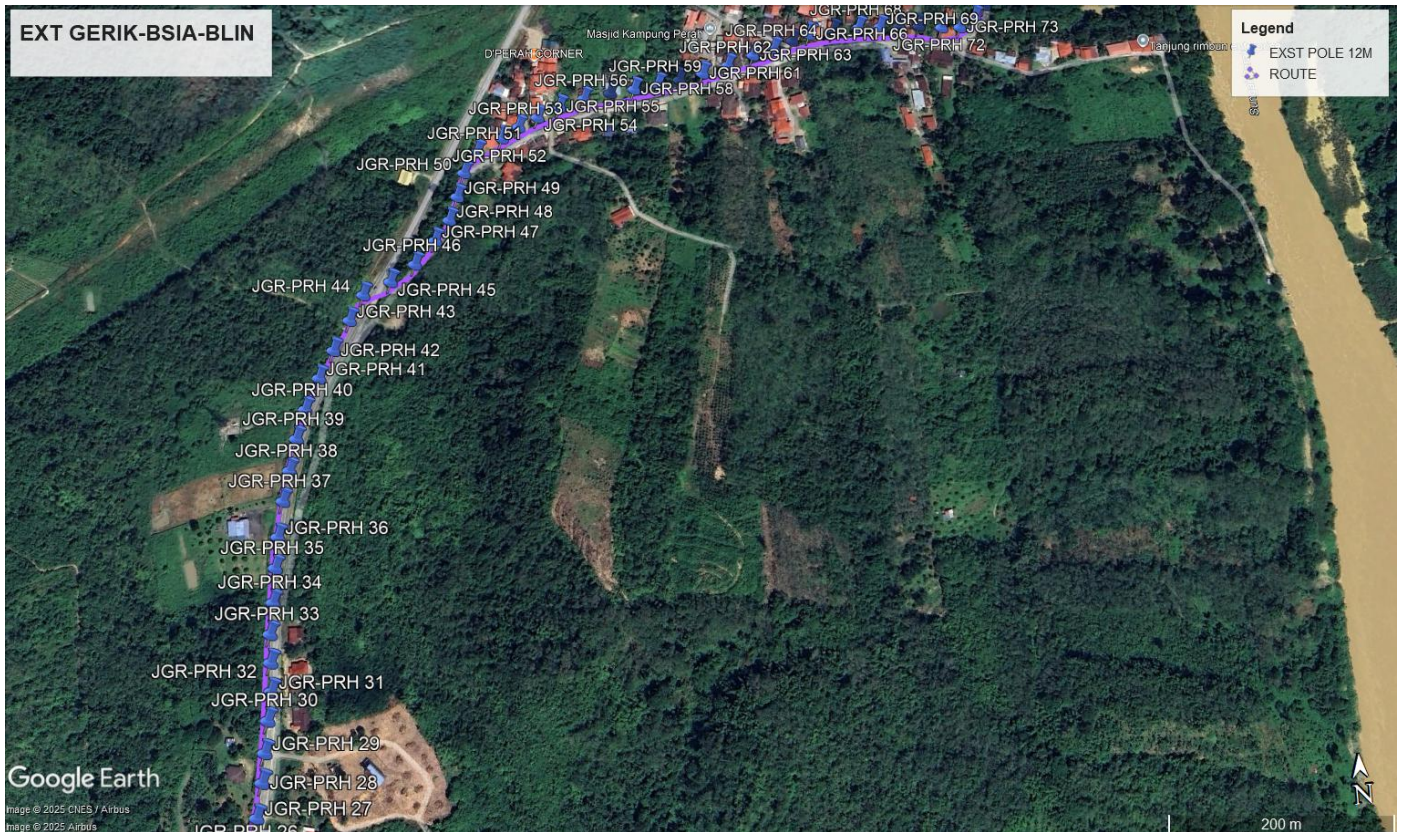


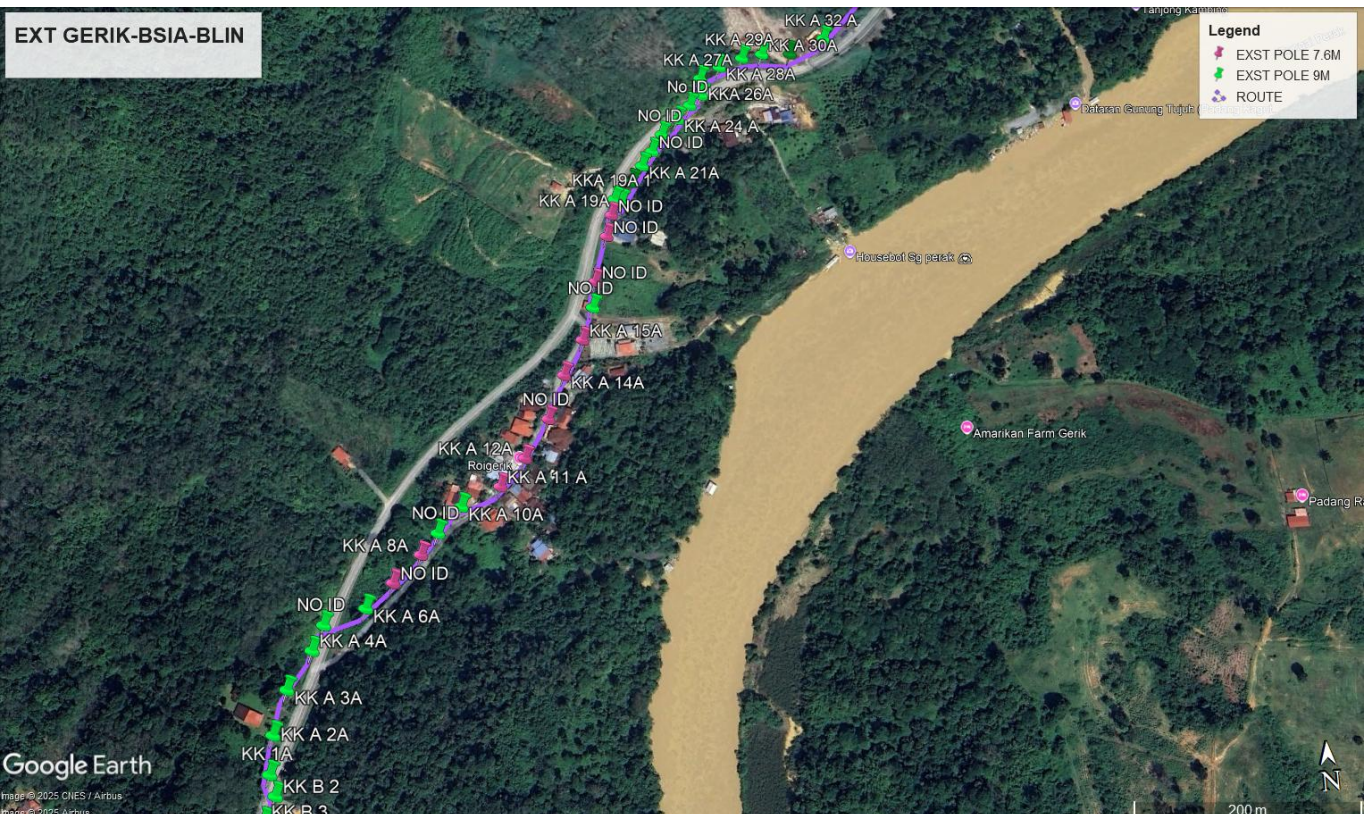


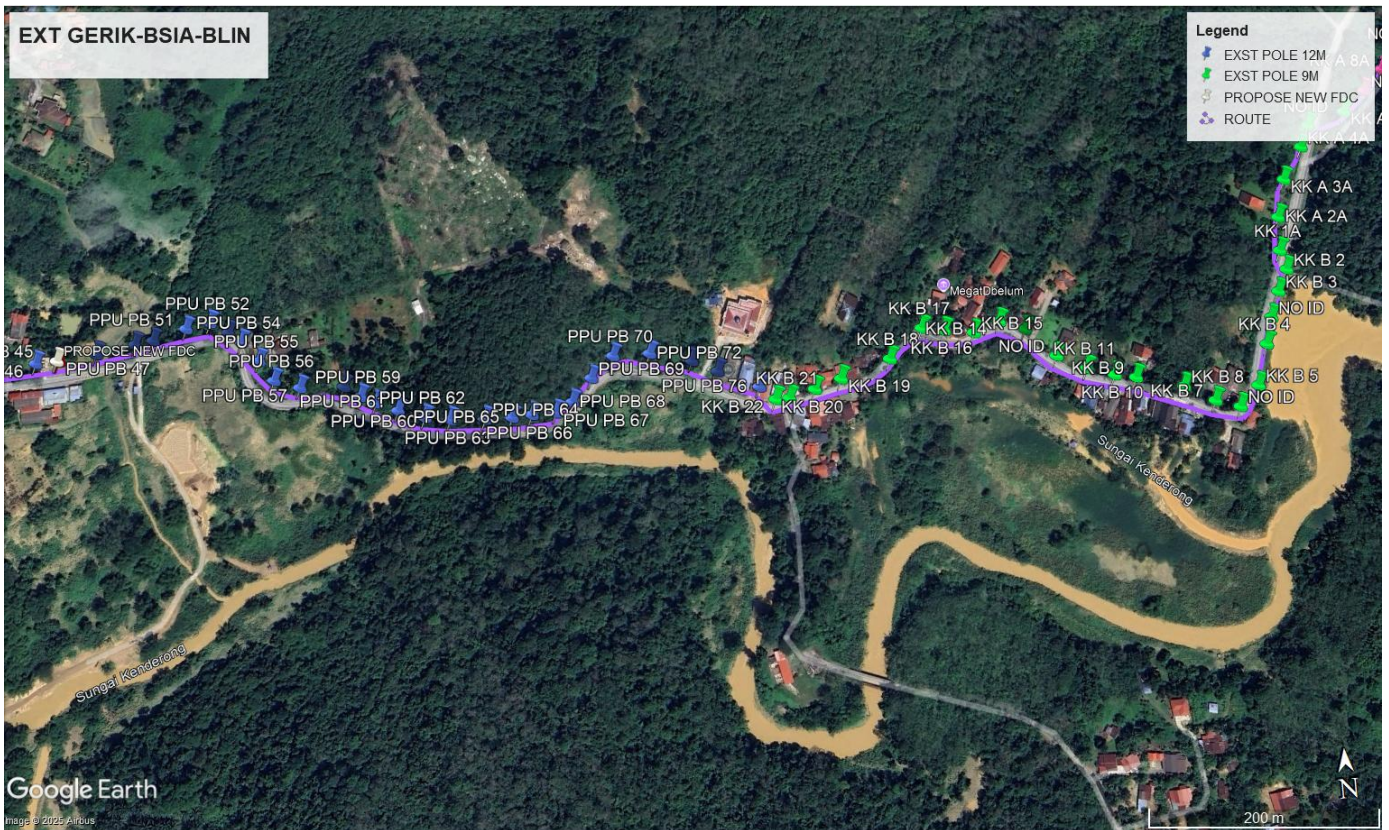
Route 2



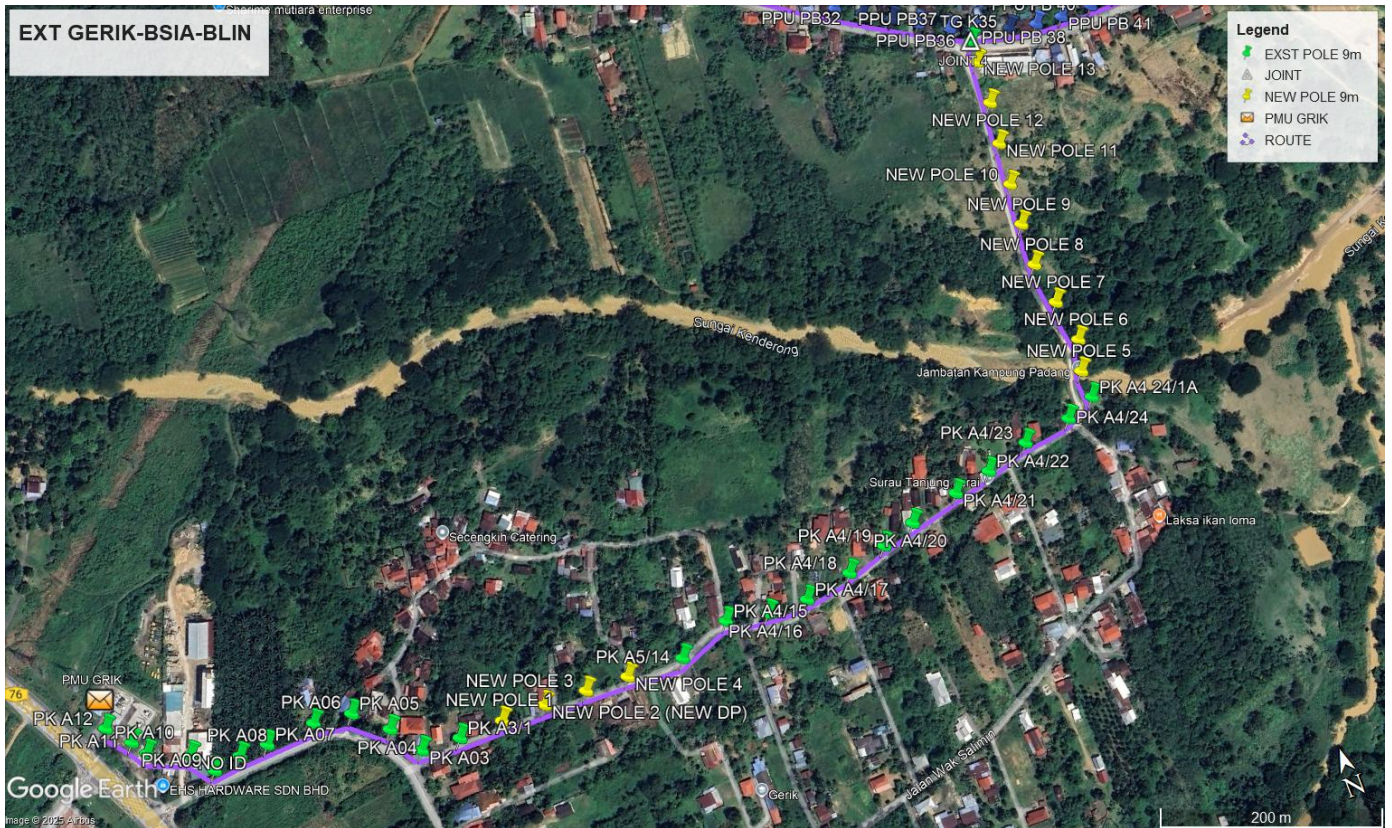








Route 3



Prop New Pole Lat & Long Table

| PROPOSED POLE COORDINATE | | |
|---------------------------------|-----------------|------------------|
| POLE NUMBER | LATITUDE | LONGITUDE |
| PK A4 24/1A | 5.4145 | 101.1369168 |
| PK A4/24 | 5.414399 | 101.136663 |
| PK A4/23 | 5.414337 | 101.1362446 |
| PK A4/22 | 5.414225 | 101.135868 |
| PK A4/21 | 5.414152 | 101.1355409 |
| PK A4/20 | 5.414049 | 101.1351122 |
| PK A4/19 | 5.413957 | 101.1348208 |
| PK A4/18 | 5.413847 | 101.1344728 |
| PK A4/17 | 5.413768 | 101.1340664 |
| PK A4/16 | 5.413776 | 101.1337239 |
| PK A4/15 | 5.413839 | 101.1333754 |
| PK A3/1 | 5.413722 | 101.1310164 |
| PK A03 | 5.413741 | 101.130698 |
| PK A04 | 5.413988 | 101.1305148 |
| PK A05 | 5.414214 | 101.1302605 |
| PK A06 | 5.41425 | 101.1299449 |
| PK A07 | 5.414222 | 101.129542 |
| NO ID | 5.414356 | 101.1289115 |
| PK A11 | 5.414622 | 101.1284786 |
| PK A10 | 5.414494 | 101.1285728 |
| PK A12 | 5.414801 | 101.1283072 |
| PK A09 | 5.414177 | 101.1290754 |
| PK A08 | 5.414212 | 101.1293053 |
| NEW POLE 1 | 5.413729 | 101.1313794 |
| NEW POLE 2 (NEW DP) | 5.413725 | 101.1317422 |
| NEW POLE 3 | 5.413713 | 101.1321001 |
| NEW POLE 4 | 5.4137 | 101.1324597 |
| NEW POLE 5 | 5.414732 | 101.1369176 |
| NEW POLE 6 | 5.414988 | 101.136996 |
| NEW POLE 7 | 5.41535 | 101.1369361 |
| NEW POLE 8 | 5.415713 | 101.1368882 |
| NEW POLE 9 | 5.416076 | 101.1369208 |
| NEW POLE 10 | 5.416435 | 101.1369684 |
| NEW POLE 11 | 5.416799 | 101.1370134 |
| NEW POLE 12 | 5.417155 | 101.1370662 |
| NEW POLE 13 | 5.417523 | 101.1370827 |
| NEW POLE 14 | 5.429724 | 101.130522 |
| NEW POLE 15 | 5.429786 | 101.1302466 |
| NEW POLE 16 | 5.430138 | 101.1292714 |
| NEW POLE 17 | 5.430301 | 101.1293408 |
| NEW POLE 18 | 5.432201 | 101.1291402 |

| PROPOSED POLE COORDINATE | | |
|--------------------------|----------|-------------|
| POLE NUMBER | LATITUDE | LONGITUDE |
| NEW POLE 19 | 5.432055 | 101.129442 |
| NEW POLE 20 | 5.431504 | 101.1315716 |
| NEW POLE 21 | 5.431843 | 101.1317236 |
| NEW POLE 22 | 5.432176 | 101.1318821 |
| NEW POLE 23 | 5.432505 | 101.1320384 |
| PK A5/14 | 5.413682 | 101.1329353 |
| NEW POLE 37 | 5.417709 | 101.1371037 |
| NEW POLE 36 | 5.425105 | 101.1323238 |
| TG M5 | 5.425235 | 101.1321022 |
| TG M6 J6 | 5.425335 | 101.1316707 |
| TG M7 J7 | 5.425423 | 101.1313211 |
| TG M8 J8 | 5.425603 | 101.130998 |
| TG M9 J9 | 5.425736 | 101.1308612 |
| TG M10 J10 | 5.425903 | 101.1307378 |
| TG M11 J11 | 5.426184 | 101.1304085 |
| TG M12 J12 | 5.426474 | 101.1302414 |
| TG M13 J13 | 5.426744 | 101.1300333 |
| TG M14 J14 | 5.426952 | 101.1298695 |
| NEW POLE 35 | 5.427135 | 101.1296646 |
| NEW POLE 30 | 5.435551 | 101.1296968 |
| NEW POLE 31 | 5.435448 | 101.1297382 |
| AS A12 | 5.43532 | 101.1302759 |
| AS A13 | 5.43526 | 101.1304126 |
| AS A14 | 5.435176 | 101.1306297 |
| AS A15 | 5.435133 | 101.1308928 |
| T1 C9 | 5.435024 | 101.1311255 |
| T1 C8 | 5.434924 | 101.1313086 |
| T1 C7 | 5.434816 | 101.1314902 |
| T1 C6 | 5.434638 | 101.1318662 |
| T1 C5 | 5.434421 | 101.1321581 |
| T1 C4 | 5.434264 | 101.1324212 |
| T1 C3 | 5.434095 | 101.13273 |
| T1 C1 | 5.434007 | 101.13284 |
| T1 A5 | 5.433672 | 101.1326844 |
| T1 A4 | 5.433414 | 101.1325601 |
| T1 A3 | 5.433207 | 101.1324217 |
| T1 A2 | 5.433046 | 101.1323536 |
| T1 A1 | 5.432883 | 101.1322621 |
| NO ID | 5.431211 | 101.1313744 |
| BBMB 10/5 | 5.431257 | 101.1311736 |
| NO ID | 5.431352 | 101.1309503 |

| PROPOSED POLE COORDINATE | | |
|--------------------------|----------|-------------|
| POLE NUMBER | LATITUDE | LONGITUDE |
| NO ID | 5.431469 | 101.1307101 |
| FA 2B | 5.43164 | 101.1303517 |
| FA 3B | 5.43175 | 101.1301208 |
| FA 4B | 5.431864 | 101.129879 |
| NEW POLE 32 | 5.431008 | 101.1293911 |
| NEW POLE 33 | 5.430875 | 101.1294677 |
| FA 8A/1 | 5.430585 | 101.1294248 |
| CIMB D5 | 5.43004 | 101.129302 |
| CIMB D7 | 5.429949 | 101.12955 |
| CIMB D8 | 5.429932 | 101.1296954 |
| CIMB D9 | 5.429889 | 101.129862 |
| CIMB D10 | 5.429849 | 101.1299876 |
| CIMB C21 | 5.429718 | 101.1306913 |
| CIMB C20 | 5.429525 | 101.1306331 |
| CIMB C19 | 5.429291 | 101.130573 |
| CIMB C18 | 5.429092 | 101.1305163 |
| CIMB C17 | 5.428817 | 101.130454 |
| CIMB C16 | 5.4286 | 101.1303869 |
| CIMB C15 | 5.428398 | 101.1303305 |
| CIMB C14 | 5.428211 | 101.1302777 |
| TG A5/1 | 5.428059 | 101.1303579 |
| CIMB C12/9 | 5.427733 | 101.1303631 |
| CIMB C12/8 | 5.427538 | 101.1303053 |
| CIMB C12/7 | 5.427343 | 101.1301075 |
| CIMB C12/6 | 5.427193 | 101.1299034 |
| NEW POLE 34 | 5.427267 | 101.1297825 |
| TG H10/1 | 5.427986 | 101.1305301 |
| FA 5B | 5.431956 | 101.1296541 |
| BT6 55 | 5.452416 | 101.1937945 |
| CIMB D6 | 5.429976 | 101.12944 |
| AS C9 | 5.431052 | 101.1291862 |
| AS C8 | 5.431107 | 101.1289385 |
| AS DC7 | 5.43124 | 101.1288911 |
| AS DC6 | 5.431533 | 101.1289427 |
| AS DC5 | 5.431789 | 101.1290203 |
| AS DC4 | 5.432038 | 101.1290966 |
| AS A11 | 5.435429 | 101.1298755 |
| NEW POLE 29 | 5.475619 | 101.1314904 |
| MS 23 | 5.475496 | 101.1315558 |
| MS 22 | 5.475254 | 101.1317682 |
| MS 21 | 5.474977 | 101.131915 |

| PROPOSED POLE COORDINATE | | |
|--------------------------|----------|-------------|
| POLE NUMBER | LATITUDE | LONGITUDE |
| MS 20 | 5.474719 | 101.1321037 |
| MS 19 | 5.474474 | 101.1322785 |
| MS 18 | 5.47417 | 101.1323864 |
| MS 17 | 5.473875 | 101.1325247 |
| MS 16 | 5.473592 | 101.1326548 |
| MS 15 | 5.473239 | 101.1328339 |
| MS 14 | 5.472968 | 101.1329677 |
| MS 13 | 5.472706 | 101.1330921 |
| MS 12 | 5.4725 | 101.1331973 |
| MS 11 | 5.472203 | 101.1334272 |
| PPU PB1 | 5.425171 | 101.1324338 |
| PPU PB2 | 5.424956 | 101.1325382 |
| PPU PB3 | 5.424771 | 101.1326049 |
| PPU PB4 | 5.424561 | 101.1326743 |
| PPU PB5 | 5.424256 | 101.1327936 |
| PPU PB6 | 5.424067 | 101.1328627 |
| PPU PB7 | 5.423819 | 101.1329614 |
| PPU PB8 | 5.423662 | 101.1330616 |
| PPU PB9 | 5.423517 | 101.133118 |
| PPU PB10 | 5.423254 | 101.1331393 |
| PPU PB11 | 5.422986 | 101.1332034 |
| PPU PB12 | 5.42274 | 101.1332843 |
| PPU PB13 | 5.422476 | 101.1332833 |
| PPU PB14 | 5.422212 | 101.1332369 |
| PPU PB15 | 5.422004 | 101.1332101 |
| PPU PB16 | 5.421729 | 101.133207 |
| PPU PB17 | 5.421478 | 101.1332381 |
| PPU PB18 | 5.421182 | 101.1333156 |
| PPU PB19 | 5.420965 | 101.1333239 |
| PPU PB20 | 5.420804 | 101.1333418 |
| PPU PB21 | 5.420599 | 101.1334392 |
| PPU PB22 | 5.420048 | 101.1339325 |
| PPU PB23 | 5.419901 | 101.1341186 |
| PPU PB24 | 5.419738 | 101.1343252 |
| PPU PB25 | 5.419593 | 101.1344994 |
| PPU PB26 | 5.419475 | 101.1346859 |
| PPU PB27 | 5.419281 | 101.1348939 |
| PPU PB28 | 5.419115 | 101.1350871 |
| PPU PB29 | 5.418984 | 101.1352591 |
| PPU PB30 | 5.418846 | 101.1354512 |
| PPU PB31 | 5.418713 | 101.1356411 |

| PROPOSED POLE COORDINATE | | |
|--------------------------|----------|-------------|
| POLE NUMBER | LATITUDE | LONGITUDE |
| PPU PB32 | 5.418551 | 101.1358773 |
| PPU PB33 | 5.418398 | 101.1361082 |
| PPU PB34 | 5.418276 | 101.1363173 |
| PPU PB35 | 5.418139 | 101.1365374 |
| PPU PB36 | 5.418019 | 101.1367356 |
| PPU PB37 | 5.417881 | 101.1369711 |
| NO ID | 5.485269 | 101.1245954 |
| NO ID | 5.484324 | 101.124912 |
| NO ID | 5.484094 | 101.1250146 |
| NO ID | 5.483855 | 101.1251447 |
| NO ID | 5.483592 | 101.1252617 |
| NO ID | 5.483332 | 101.1253158 |
| NO ID | 5.483058 | 101.1253894 |
| NO ID | 5.482846 | 101.1254944 |
| TM A 33 6A | 5.482599 | 101.1255699 |
| TM A 33 5A | 5.482355 | 101.1256491 |
| TM A 33 4A | 5.482075 | 101.1257518 |
| TM A 33 3A | 5.481833 | 101.1258631 |
| TM A 33 2A | 5.481625 | 101.1260009 |
| TM A 33 1A | 5.481394 | 101.1261302 |
| TM A 33 | 5.481087 | 101.1262682 |
| TM A 32 | 5.480934 | 101.1264551 |
| TM A 31 | 5.480676 | 101.1266096 |
| TM A 30 | 5.480432 | 101.1267784 |
| TM A 29 | 5.480248 | 101.1269287 |
| TM A 28 | 5.480026 | 101.1270577 |
| TM A 27 | 5.479807 | 101.1272881 |
| TM A 26 | 5.479668 | 101.1274852 |
| TM A 25 | 5.479469 | 101.1276965 |
| TM A 24 | 5.479341 | 101.127853 |
| TM A 23 | 5.479169 | 101.1280391 |
| TM A 22 | 5.479022 | 101.1282522 |
| TM A 21 | 5.478863 | 101.1284565 |
| TM A 20 | 5.478662 | 101.128618 |
| TM A 19 | 5.478581 | 101.1288224 |
| TM A 18 | 5.478392 | 101.1289808 |
| TM A 17 | 5.478197 | 101.1291445 |
| TM A 16 | 5.47802 | 101.1292768 |
| TM A 15 | 5.477884 | 101.1294204 |
| TM A 13 | 5.477522 | 101.1297861 |
| TM A 12 | 5.477391 | 101.1299155 |

| PROPOSED POLE COORDINATE | | |
|--------------------------|----------|-------------|
| POLE NUMBER | LATITUDE | LONGITUDE |
| TM A 11 | 5.477232 | 101.1300762 |
| TM A 10 | 5.477072 | 101.1302131 |
| TM A 09 | 5.476917 | 101.1303324 |
| TM A 08 | 5.476769 | 101.1304521 |
| TM A 07 | 5.476601 | 101.1305751 |
| TM A 06 | 5.476437 | 101.1307066 |
| TM A 05 | 5.476257 | 101.130821 |
| TM A 04 | 5.47611 | 101.1309426 |
| TM A 02 | 5.475773 | 101.1311875 |
| TM A 01 | 5.475593 | 101.1313017 |
| RPA2 MK90 | 5.471817 | 101.133617 |
| RPA2 MK89 | 5.471657 | 101.1337224 |
| RPA2 MK88 | 5.471474 | 101.1338191 |
| RPA2 MK87 | 5.471227 | 101.1339427 |
| RPA2 MK86 | 5.470988 | 101.1340698 |
| RPA2 MK85 | 5.470768 | 101.1342046 |
| RPA2 MK84 | 5.470551 | 101.1343175 |
| RPA2 MK83 | 5.470372 | 101.1343949 |
| RPA2 MK82 | 5.470185 | 101.1344643 |
| RPA2 MK81 | 5.469999 | 101.1345296 |
| RPA2 MK80 | 5.469775 | 101.1346417 |
| RPA2 MK79 | 5.46958 | 101.1347161 |
| RPA2 MK78 | 5.469387 | 101.1347985 |
| RPA2 MK77 | 5.469225 | 101.1348814 |
| RPA2 MK76 | 5.469074 | 101.1349197 |
| RPA2 MK75 | 5.468861 | 101.1350083 |
| RPA2 MK74 | 5.468662 | 101.1351236 |
| RPA2 MK73 | 5.468419 | 101.1352471 |
| RPA2 MK71 | 5.468127 | 101.1354708 |
| RPA2 MK70 | 5.467989 | 101.1356206 |
| RPA2 MK69 | 5.467865 | 101.1357313 |
| RPA2 MK68 | 5.467751 | 101.1358563 |
| RPA2 MK67 | 5.467608 | 101.1360106 |
| RPA2 MK66 | 5.467497 | 101.1361591 |
| RPA2 MK65 | 5.46739 | 101.1362952 |
| RPA2 MK64 | 5.46729 | 101.1363836 |
| RPA2 MK63 | 5.467147 | 101.1365051 |
| RPA2 MK62 | 5.467024 | 101.1366331 |
| RPA2 MK61 | 5.466934 | 101.1367135 |
| RPA2 MK60 | 5.466807 | 101.1368685 |
| RPA2 MK59 | 5.466677 | 101.1369818 |

| PROPOSED POLE COORDINATE | | |
|--------------------------|----------|-------------|
| POLE NUMBER | LATITUDE | LONGITUDE |
| RPA2 MK58 | 5.466516 | 101.1370912 |
| RPA2 MK56 | 5.466255 | 101.137254 |
| RPA2 MK55 | 5.466038 | 101.1373819 |
| RPA2 MK54 | 5.465857 | 101.1374746 |
| RPA2 MK53 | 5.46564 | 101.1376049 |
| RPA2 MK52 | 5.465455 | 101.1377342 |
| RPA2 MK51 | 5.465245 | 101.1378343 |
| RPA2 MK50 | 5.465033 | 101.1379532 |
| RPA2 MK49 | 5.464828 | 101.1380625 |
| RPA2 MK48 | 5.464631 | 101.1381082 |
| T1 C7/3 | 5.439851 | 101.1328531 |
| T1 C7/1 | 5.43961 | 101.1327918 |
| T1 C7 | 5.439456 | 101.1331769 |
| T1 C6 | 5.439401 | 101.1329904 |
| T1 C3/1 | 5.43818 | 101.1323781 |
| T1 C3/2 | 5.437961 | 101.1322599 |
| T1 C3/3 | 5.437734 | 101.1321508 |
| T1 C3/4 | 5.437497 | 101.1320268 |
| T1 C3/5 | 5.43714 | 101.131846 |
| T1 C3/6 | 5.437079 | 101.1317283 |
| TST A4 | 5.436947 | 101.1316658 |
| TST A5 | 5.436691 | 101.1315245 |
| TST A6 | 5.436457 | 101.1313886 |
| TST A6/1 | 5.435975 | 101.1311169 |
| NEW POLE 25 | 5.435765 | 101.1309922 |
| ASA 13/3 | 5.435779 | 101.130687 |
| ASA 13/4 | 5.435979 | 101.1304099 |
| ASA 13/5 | 5.435981 | 101.1301647 |
| ASA 13/6 | 5.43599 | 101.1298602 |
| NEW POLE 24 | 5.435717 | 101.1296735 |
| NO ID | 5.486932 | 101.1239383 |
| NO ID | 5.48672 | 101.124001 |
| NO ID | 5.486549 | 101.1240872 |
| NO ID | 5.486292 | 101.1241933 |
| NO ID | 5.486013 | 101.1242954 |
| NO ID | 5.485754 | 101.1243996 |
| NO ID | 5.485535 | 101.1245054 |
| NO ID | 5.487205 | 101.1238719 |
| NO ID | 5.485007 | 101.124709 |
| NO ID | 5.484807 | 101.1248056 |
| NO ID | 5.48744 | 101.123867 |

| PROPOSED POLE COORDINATE | | |
|--------------------------|----------|-------------|
| POLE NUMBER | LATITUDE | LONGITUDE |
| NO ID | 5.487708 | 101.123847 |
| NO ID | 5.487955 | 101.1238331 |
| NO ID | 5.488201 | 101.1238578 |
| NO ID | 5.488451 | 101.1239065 |
| NO ID | 5.488706 | 101.1239471 |
| NO ID | 5.488965 | 101.124033 |
| NO ID | 5.489173 | 101.1241255 |
| NO ID | 5.489409 | 101.1242077 |
| NO ID | 5.489588 | 101.1243252 |
| NO ID | 5.489784 | 101.1244442 |
| NO ID | 5.489975 | 101.1245757 |
| NO ID | 5.490185 | 101.1247622 |
| NO ID | 5.490354 | 101.1248885 |
| NO ID | 5.490561 | 101.1250209 |
| NO ID | 5.490739 | 101.1251218 |
| NO ID | 5.49097 | 101.1252164 |
| KK B 13 | 5.513029 | 101.1290345 |
| KK B 14 | 5.512828 | 101.1291737 |
| KK B 15 | 5.512524 | 101.1294049 |
| SK B 17 | 5.512296 | 101.129536 |
| SK B 16 | 5.511947 | 101.1297869 |
| SK B 15 | 5.511588 | 101.1300627 |
| SK B 14 | 5.511305 | 101.1302466 |
| SK B 13 | 5.511147 | 101.1303588 |
| SK B 12 | 5.510878 | 101.1305502 |
| SK B 11 | 5.51068 | 101.1306796 |
| TNB 1C 4/19 | 5.51028 | 101.130896 |
| SK B 9 | 5.509973 | 101.1310668 |
| SK B 8 | 5.50974 | 101.1311724 |
| SK B 7 | 5.509417 | 101.1313108 |
| SK B 6 | 5.509157 | 101.1313931 |
| SK B 5 | 5.50884 | 101.1314609 |
| SK B 4 | 5.508542 | 101.1315161 |
| SK B 3 | 5.508255 | 101.1315784 |
| SK B 2 | 5.507836 | 101.1316509 |
| SK B 1 | 5.507557 | 101.1317046 |
| SK A 2 | 5.507245 | 101.1317615 |
| SK A 3 | 5.507044 | 101.1318107 |
| SK A 4 | 5.506842 | 101.1318267 |
| SK A 5 | 5.506593 | 101.131875 |
| SK A 6 | 5.506118 | 101.1319136 |

| PROPOSED POLE COORDINATE | | |
|--------------------------|----------|-------------|
| POLE NUMBER | LATITUDE | LONGITUDE |
| SK A 7 | 5.505838 | 101.1319301 |
| SK A 8 | 5.505396 | 101.1319438 |
| SK A 9 | 5.505095 | 101.1319208 |
| SK A 10 | 5.504693 | 101.1319095 |
| SK A 11 | 5.504264 | 101.1318377 |
| SK A 12 | 5.503788 | 101.131775 |
| SK A 13 | 5.50348 | 101.1317111 |
| SK A 14 | 5.503266 | 101.131642 |
| SK A 15 | 5.502993 | 101.1315197 |
| SK A 16 | 5.50257 | 101.1313882 |
| SK A 17 | 5.502399 | 101.1313299 |
| SK A 18 | 5.502144 | 101.1312185 |
| SK A 19 | 5.501857 | 101.1311115 |
| SK A 20 | 5.501437 | 101.1309517 |
| SK A 21 | 5.501086 | 101.130821 |
| SK A 22 | 5.500755 | 101.1307397 |
| SK A 23 | 5.500414 | 101.1306582 |
| SK A 24 | 5.500009 | 101.1305409 |
| SK A 25 | 5.499662 | 101.1304643 |
| SK A 26 | 5.499209 | 101.1303578 |
| SK A 27 | 5.498908 | 101.1302301 |
| NO ID | 5.498569 | 101.1301324 |
| SK A 29 | 5.498273 | 101.1300736 |
| SK A 30 | 5.497874 | 101.1299899 |
| SK A 31 | 5.497387 | 101.1298586 |
| SK A 32 | 5.497078 | 101.1297603 |
| SK A 33 | 5.496838 | 101.1296464 |
| NO ID | 5.496659 | 101.1295002 |
| SKA 35 | 5.496452 | 101.1293508 |
| SK A 36 | 5.496232 | 101.1291696 |
| SK A 37 | 5.495904 | 101.1288597 |
| NO ID | 5.495628 | 101.1286037 |
| NO ID | 5.495494 | 101.1284389 |
| NO ID | 5.495285 | 101.1282837 |
| NO ID | 5.495122 | 101.1281098 |
| NO ID | 5.494939 | 101.1277969 |
| NO ID | 5.494808 | 101.1274933 |
| NO ID | 5.494677 | 101.1272423 |
| NO ID | 5.494524 | 101.1270046 |
| NO ID | 5.494328 | 101.1267874 |
| KP 2A1 | 5.49402 | 101.1265329 |

| PROPOSED POLE COORDINATE | | |
|--------------------------|----------|-------------|
| POLE NUMBER | LATITUDE | LONGITUDE |
| KP 2A2 | 5.493835 | 101.1264438 |
| KP 2A3 | 5.493418 | 101.126243 |
| KP 2A4 | 5.493118 | 101.1260807 |
| KP 2A5 | 5.492781 | 101.1259277 |
| KP 2A6 | 5.492274 | 101.1257225 |
| KP 2A7 | 5.492034 | 101.1256455 |
| KP 2A8 | 5.491722 | 101.1255824 |
| KP 2A9 | 5.491447 | 101.1255392 |
| NEW POLE 28 | 5.491153 | 101.1254514 |
| NO ID | 5.49119 | 101.1252769 |
| KK A12 | 5.513267 | 101.1288284 |
| KK A11 | 5.513489 | 101.1286584 |
| KK A10 | 5.513799 | 101.1284432 |
| KK A9 | 5.514059 | 101.1282689 |
| KK A8 | 5.514357 | 101.1280642 |
| KK A7 | 5.51465 | 101.1278549 |
| KK A6 | 5.514936 | 101.1276605 |
| KK A5 | 5.515203 | 101.1275093 |
| NEW POLE 26 | 5.515485 | 101.1273452 |
| NEW POLE 27 | 5.515472 | 101.1272275 |
| NO ID | 5.515423 | 101.1271107 |
| TM A 14 | 5.477704 | 101.1295834 |
| TM A 03 | 5.475941 | 101.1310597 |
| RPA2 MK72 | 5.46833 | 101.1353568 |
| RPA2 MK57 | 5.466382 | 101.1371797 |
| RPA2 MK47 | 5.464447 | 101.1381704 |
| RPA2 MK46 | 5.464159 | 101.1382705 |
| RPA2 MK45 | 5.463949 | 101.1383449 |
| RPA2 MK44 | 5.46374 | 101.1383791 |
| RPA2 MK43 | 5.46351 | 101.1384256 |
| RPA2 MK42 | 5.463267 | 101.1384961 |
| RPA2 MK41 | 5.46306 | 101.1385356 |
| RPA2 MK40 | 5.462846 | 101.1385348 |
| RPA2 MK39 | 5.462595 | 101.1385633 |
| RPA2 MK38 | 5.462374 | 101.1385598 |
| RPA2 MK37 | 5.462169 | 101.1385478 |
| RPA2 MK36 | 5.461918 | 101.1385152 |
| RPA2 MK35 | 5.461702 | 101.1384687 |
| RPA2 MK34 | 5.461423 | 101.1384192 |
| RPA2 MK33 | 5.461184 | 101.1383012 |
| RPA2 MK32 | 5.46097 | 101.1382231 |

| PROPOSED POLE COORDINATE | | |
|--------------------------|----------|-------------|
| POLE NUMBER | LATITUDE | LONGITUDE |
| RPA2 MK31 | 5.460739 | 101.1381288 |
| RPA2 MK30 | 5.460502 | 101.1380228 |
| RPA2 MK29 | 5.460301 | 101.1379623 |
| RPA2 MK28 | 5.460102 | 101.1378744 |
| RPA2 MK27 | 5.45994 | 101.1378044 |
| RPA2 MK26 | 5.459764 | 101.1377315 |
| RPA MK25 | 5.459591 | 101.1376763 |
| RPA2 MK24 | 5.459435 | 101.1376053 |
| RPA2 MK23 | 5.459163 | 101.1375311 |
| PPG A16/1 | 5.457535 | 101.1366643 |
| PPG A16/2 | 5.457338 | 101.1366413 |
| PPG A16/3 | 5.457021 | 101.1366681 |
| PPG A16/4 | 5.456718 | 101.1367213 |
| PPG A16/5 | 5.4564 | 101.1367686 |
| PPG A16/6 | 5.456136 | 101.1368114 |
| PPG A16/7 | 5.455815 | 101.1368014 |
| PPG A16/8 | 5.455521 | 101.1367739 |
| PPG A16/9 | 5.455313 | 101.1367947 |
| RPA B3 | 5.455123 | 101.1367044 |
| RPA B4 | 5.454962 | 101.1366951 |
| RPA B5 | 5.45484 | 101.1366902 |
| RPA B6 | 5.454578 | 101.1366791 |
| RPA B7 | 5.45433 | 101.1366422 |
| RPA B8 | 5.454093 | 101.1366108 |
| DK RBT2 93 | 5.453836 | 101.1365868 |
| RPA B8/2 | 5.453883 | 101.1364163 |
| NO ID | 5.453899 | 101.1362741 |
| KBD 5/3/3/1B | 5.453575 | 101.1362493 |
| NO ID | 5.453139 | 101.1361899 |
| KBD 5/3/3/1 | 5.45275 | 101.1361389 |
| KBD 5/3/3/2 | 5.452412 | 101.1360972 |
| KBD 5/3/3/3 | 5.452213 | 101.1360862 |
| KBD 5/3/3/4 | 5.451938 | 101.1360467 |
| KBD 5/3/3/5 | 5.451585 | 101.1359946 |
| KBD 5/3/3/6 | 5.451248 | 101.1358646 |
| KBD A4/1 | 5.451091 | 101.1357894 |
| KBD A4/2 | 5.450733 | 101.1356263 |
| KBD A4/3 | 5.450524 | 101.1355249 |
| KBD A4/4 | 5.450273 | 101.1354081 |
| KBD A4/5 | 5.450056 | 101.1353396 |
| KBD A4/6 | 5.449665 | 101.1352227 |

| PROPOSED POLE COORDINATE | | |
|--------------------------|----------|-------------|
| POLE NUMBER | LATITUDE | LONGITUDE |
| KBD A4/7 | 5.449299 | 101.1351242 |
| KBD A4/8 | 5.449008 | 101.1350423 |
| TR A10/6 | 5.44868 | 101.1349919 |
| TR A10/5 | 5.448591 | 101.1351673 |
| TR A10/4 | 5.448424 | 101.135274 |
| TR A10/3 | 5.448099 | 101.1351815 |
| TR A10/1 | 5.447996 | 101.135267 |
| TR A10 | 5.447795 | 101.1351963 |
| TR A9 | 5.447578 | 101.1351332 |
| TR A8 | 5.447388 | 101.1350731 |
| TR A7 | 5.44714 | 101.1350186 |
| TR A6 | 5.446987 | 101.1349712 |
| TR A5 | 5.446715 | 101.1349173 |
| TR A4 | 5.446529 | 101.1348724 |
| TR A3 | 5.446328 | 101.1348264 |
| TR A2 | 5.446183 | 101.1348067 |
| JPG A5 | 5.445463 | 101.1349131 |
| JPG A6 | 5.445202 | 101.1347971 |
| JPG A7 | 5.444955 | 101.1347061 |
| JPG A8 | 5.444612 | 101.1346109 |
| JPG A9 | 5.444326 | 101.1344986 |
| JPG A10 TS B10 | 5.444122 | 101.1344434 |
| TS B9 | 5.443833 | 101.1343373 |
| TS B8 | 5.443487 | 101.1342165 |
| TS B7 | 5.443223 | 101.1341023 |
| TS B6 | 5.442938 | 101.1339351 |
| TS B5 | 5.442595 | 101.1337469 |
| TS B4 | 5.442403 | 101.1335811 |
| TS B3 | 5.442072 | 101.1332527 |
| T1 B10/9 | 5.442103 | 101.1332924 |
| T1 B10/8 | 5.441911 | 101.1331786 |
| T1 B10/7 | 5.44156 | 101.1329026 |
| T1 B10/6 | 5.441177 | 101.1326048 |
| T1 B10/5 | 5.441051 | 101.1325218 |
| T1 B10/4 | 5.44091 | 101.132424 |
| T1 B10/3 | 5.440817 | 101.1323587 |
| T1 B10/2 | 5.440688 | 101.1322639 |
| T1 B10/1 | 5.440571 | 101.1321633 |
| TAKS FP1 A1 | 5.439242 | 101.132912 |
| TAKS FP1 A2 | 5.43914 | 101.1328564 |
| TAKS FP1 A3 | 5.438919 | 101.1327408 |

| PROPOSED POLE COORDINATE | | |
|---------------------------------|-----------------|------------------|
| POLE NUMBER | LATITUDE | LONGITUDE |
| TAKS FP1 A4 | 5.438672 | 101.1326075 |
| TAKS FP1 A5 | 5.43847 | 101.1325215 |
| TAKS FP1 A6 | 5.438244 | 101.1323947 |
| T1 B10 | 5.440456 | 101.1320717 |
| T1 B11 | 5.440381 | 101.1322282 |
| T1 B12 | 5.440324 | 101.1323839 |
| T1 B13 | 5.440203 | 101.1326856 |
| T1 B14 | 5.440099 | 101.1329504 |
| NO ID | 5.484599 | 101.1249171 |
| BT6 55 | 5.452416 | 101.1937945 |
| BT6 B 23 | 5.452467 | 101.1937321 |
| BT6 B 22 | 5.452534 | 101.1936361 |
| BT6 B 21 | 5.452599 | 101.1935426 |
| BT6 B 20 | 5.452754 | 101.1933225 |
| BT6 B 19 | 5.453102 | 101.1928632 |
| BT6 B 18 | 5.453336 | 101.1924635 |
| BT6 B 17 | 5.453469 | 101.1921719 |
| BT6 B 16 | 5.453636 | 101.1918132 |
| BT6 B 15 | 5.453799 | 101.1914904 |
| BT6 B 14 | 5.453972 | 101.191167 |
| BT6 B 13 | 5.454101 | 101.1908792 |
| BT6 B 12 | 5.454273 | 101.1903339 |
| BT6 B 11 | 5.454295 | 101.1898886 |
| BT6 B 10 | 5.454219 | 101.1894461 |
| BT6 B 9 | 5.454104 | 101.189077 |
| BT6 B 8 | 5.453963 | 101.1886786 |
| BT6 B 7 | 5.453854 | 101.1882403 |
| BT6 B 6 | 5.453847 | 101.1878135 |
| BT6 B 5 | 5.453962 | 101.1873669 |
| BT6 B 4 | 5.454111 | 101.1870459 |
| BT6 B 3 | 5.454322 | 101.1866125 |
| BT6 B 2 | 5.454479 | 101.1862899 |
| BT6 B 1 | 5.454637 | 101.1859642 |
| BT6 A 1 | 5.454796 | 101.1856566 |
| BT6 A 2 | 5.454917 | 101.1853982 |
| BT6 A 3 | 5.455019 | 101.1851863 |
| BT6 A 4 | 5.455179 | 101.184869 |
| BT6 A 5 | 5.455365 | 101.1845151 |
| BT6 A 6 | 5.45557 | 101.1841056 |
| BT6 A 7 | 5.455766 | 101.1837251 |
| BT6 A 8 | 5.455935 | 101.1833853 |

| PROPOSED POLE COORDINATE | | |
|--------------------------|----------|-------------|
| POLE NUMBER | LATITUDE | LONGITUDE |
| BT6 A 9 | 5.45618 | 101.1830105 |
| BT6 A 10 | 5.456461 | 101.1826572 |
| BT6 A 11 | 5.456765 | 101.1823323 |
| BT6 A 12 | 5.457002 | 101.1821199 |
| BT6 A 13 | 5.457283 | 101.1818249 |
| BT6 A 14 | 5.457613 | 101.1814881 |
| BT6 A 15 | 5.457961 | 101.1811382 |
| BT6 A 16 | 5.458287 | 101.180816 |
| BT6 A 17 | 5.458568 | 101.1804828 |
| BT6 A 18 | 5.458817 | 101.180156 |
| BT6 A 19 | 5.45902 | 101.1798974 |
| BT6 A 20 | 5.459171 | 101.1796792 |
| BT6 A 21 | 5.459405 | 101.1793656 |
| BT6 A 22 | 5.459613 | 101.1789541 |
| BT6 A 23 | 5.459766 | 101.1785293 |
| BT6 A 24 | 5.459854 | 101.1781419 |
| BT6 A 25 | 5.45992 | 101.177788 |
| BT6 A 26 | 5.45996 | 101.1773358 |
| BT6 A 27 | 5.460004 | 101.1769452 |
| BT6 A 28 | 5.459991 | 101.1765893 |
| BT6 A 29 | 5.45987 | 101.1762004 |
| BT6 A 30 | 5.459626 | 101.175885 |
| New Pole 9M 1 | 5.459511 | 101.1757515 |
| New Pole 9M 2 | 5.459086 | 101.1753011 |
| New Pole 9M 3 | 5.458913 | 101.175102 |
| KR-BT6 26 | 5.458749 | 101.1749356 |
| KR-BT6 25 | 5.458656 | 101.1747539 |
| KR-BT6 24 | 5.458559 | 101.1745441 |
| KR-BT6 23 | 5.458474 | 101.1743039 |
| KR-BT6 22 | 5.458387 | 101.1740769 |
| KR-BT6 21 | 5.458305 | 101.1738688 |
| KR-BT6 20 | 5.458226 | 101.1736956 |
| KR-BT6 19 | 5.458152 | 101.1734835 |
| KR-BT6 18 | 5.45808 | 101.1732907 |
| KR-BT6 17 | 5.458035 | 101.17313 |
| KR-BT6 16 | 5.457971 | 101.1729561 |
| KR-BT6 15 | 5.457888 | 101.1727303 |
| KR-BT6 14 | 5.4578 | 101.1725583 |
| KR-BT6 13 | 5.457717 | 101.1723314 |
| KR-BT6 12 | 5.457646 | 101.1721033 |
| KR-BT6 11 | 5.457587 | 101.1719076 |

| PROPOSED POLE COORDINATE | | |
|--------------------------|----------|-------------|
| POLE NUMBER | LATITUDE | LONGITUDE |
| KR-BT6 10 | 5.457532 | 101.1717481 |
| KR-BT6 9 | 5.457482 | 101.1715392 |
| KR-BT6 8 | 5.45742 | 101.1713097 |
| KR-BT6 7 | 5.457361 | 101.1710599 |
| KR-BT6 6 | 5.457253 | 101.1707399 |
| KR-BT6 5 | 5.457166 | 101.1704301 |
| KR-BT6 4 | 5.457087 | 101.1701645 |
| KR-BT6 3 | 5.456992 | 101.1699042 |
| KR-BT6 2 | 5.456908 | 101.1696798 |
| No ID | 5.456816 | 101.1694028 |
| KR DEC 2 | 5.45673 | 101.1690884 |
| KR DEC 3 | 5.456656 | 101.1687014 |
| No ID | 5.456443 | 101.168546 |
| No ID | 5.456176 | 101.1684073 |
| KR D 6 | 5.455912 | 101.1682876 |
| KR D 7 | 5.455694 | 101.1681883 |
| KR D 8 | 5.455485 | 101.1680425 |
| No ID | 5.455243 | 101.1678357 |
| No ID | 5.455 | 101.1676358 |
| KR D 11 | 5.45477 | 101.1674473 |
| KR D 12 | 5.454547 | 101.167295 |
| KR D 13 | 5.454229 | 101.1671894 |
| KR D 14 | 5.453946 | 101.167181 |
| KR D 15 | 5.453586 | 101.1671419 |
| KR D 16 | 5.453248 | 101.1670885 |
| KR D 17 | 5.453173 | 101.1670677 |
| KR D 18 | 5.452877 | 101.1670256 |
| KR D 19 | 5.452634 | 101.1670761 |
| KR D 20 | 5.452405 | 101.1671581 |
| KR D 21 | 5.452143 | 101.1672562 |
| KR D 22 | 5.451862 | 101.1673576 |
| KR D 23 | 5.451614 | 101.1674498 |
| KR D 24 | 5.451368 | 101.167542 |
| KR D 25 | 5.451118 | 101.1676428 |
| KR D 26 | 5.450927 | 101.1677339 |
| KR D 27 | 5.450692 | 101.1680028 |
| KR D 28 | 5.450519 | 101.1682792 |
| KR D 29 | 5.450436 | 101.1685175 |
| KR D 30 | 5.450258 | 101.1687443 |
| KR D 31 | 5.449955 | 101.1689549 |
| KR D 32 | 5.449824 | 101.1690897 |

| PROPOSED POLE COORDINATE | | |
|--------------------------|----------|-------------|
| POLE NUMBER | LATITUDE | LONGITUDE |
| KR D 33 | 5.44967 | 101.1691863 |
| KP B 9 | 5.449407 | 101.1693084 |
| KP B 8 | 5.449021 | 101.1694943 |
| KP B 7 | 5.44867 | 101.1696465 |
| KP B 6 | 5.448336 | 101.1698415 |
| KP B 5 | 5.447858 | 101.1699851 |
| KP B 4 | 5.447522 | 101.1700758 |
| KP B 3 | 5.447084 | 101.1701537 |
| KP B 2 | 5.446606 | 101.170105 |
| New Pole 9M 4 | 5.446238 | 101.1700707 |
| New Pole 9M 5 | 5.445294 | 101.1701178 |
| KP A 2 | 5.44496 | 101.1701876 |
| KP A 3 | 5.444709 | 101.1702717 |
| KP A 4 | 5.444384 | 101.1704376 |
| KP A 5 | 5.443949 | 101.1705274 |
| KP A 6 | 5.443598 | 101.1705649 |
| JGR-PRH 76 | 5.443403 | 101.1705853 |
| JGR-PRH 75 | 5.443227 | 101.1705778 |
| JGR-PRH 74 | 5.443117 | 101.1704689 |
| JGR-PRH 73 | 5.443031 | 101.1703249 |
| JGR-PRH 72 | 5.443046 | 101.1701609 |
| JGR-PRH 71 | 5.443084 | 101.1699582 |
| JGR-PRH 70 | 5.443094 | 101.1697813 |
| JGR-PRH 69 | 5.443099 | 101.1696042 |
| JGR-PRH 68 | 5.443111 | 101.1694124 |
| JGR-PRH 67 | 5.443109 | 101.169183 |
| JGR-PRH 66 | 5.443098 | 101.1689659 |
| JGR-PRH 65 | 5.443049 | 101.1688067 |
| JGR-PRH 64 | 5.442987 | 101.1686333 |
| JGR-PRH 63 | 5.442946 | 101.1684388 |
| JGR-PRH 62 | 5.442874 | 101.1682053 |
| JGR-PRH 61 | 5.442819 | 101.1679724 |
| JGR-PRH 60 | 5.442777 | 101.1677588 |
| JGR-PRH 59 | 5.442749 | 101.1675618 |
| JGR-PRH 58 | 5.442716 | 101.1673478 |
| JGR-PRH 57 | 5.442691 | 101.1671311 |
| JGR-PRH 56 | 5.442654 | 101.1668939 |
| JGR-PRH 55 | 5.442587 | 101.1666729 |
| JGR-PRH 54 | 5.442498 | 101.1664738 |
| JGR-PRH 53 | 5.442414 | 101.1663024 |
| JGR-PRH 52 | 5.442312 | 101.1661525 |

| PROPOSED POLE COORDINATE | | |
|--------------------------|----------|-------------|
| POLE NUMBER | LATITUDE | LONGITUDE |
| JGR-PRH 51 | 5.442191 | 101.165934 |
| JGR-PRH 50 | 5.441996 | 101.1658119 |
| JGR-PRH 49 | 5.441775 | 101.1657457 |
| JGR-PRH 48 | 5.441557 | 101.1656709 |
| JGR-PRH 47 | 5.441373 | 101.1655454 |
| JGR-PRH 46 | 5.441164 | 101.1653714 |
| JGR-PRH 45 | 5.441027 | 101.165163 |
| JGR-PRH 44 | 5.440936 | 101.1649263 |
| JGR-PRH 43 | 5.440727 | 101.1648028 |
| JGR-PRH 42 | 5.440479 | 101.1646615 |
| JGR-PRH 41 | 5.440243 | 101.1645447 |
| JGR-PRH 40 | 5.439979 | 101.1644338 |
| JGR-PRH 39 | 5.439739 | 101.1643594 |
| JGR-PRH 38 | 5.439481 | 101.1642991 |
| JGR-PRH 37 | 5.439241 | 101.164237 |
| JGR-PRH 36 | 5.438958 | 101.1641855 |
| JGR-PRH 35 | 5.438714 | 101.1641578 |
| JGR-PRH 34 | 5.438443 | 101.1641348 |
| JGR-PRH 33 | 5.438197 | 101.1641086 |
| JGR-PRH 32 | 5.437977 | 101.1641114 |
| JGR-PRH 31 | 5.437754 | 101.1641156 |
| JGR-PRH 30 | 5.437537 | 101.1640889 |
| JGR-PRH 29 | 5.437297 | 101.1640611 |
| JGR-PRH 28 | 5.437078 | 101.1640302 |
| JGR-PRH 27 | 5.43682 | 101.1639698 |
| JGR-PRH 26 | 5.436572 | 101.163886 |
| JGR-PRH 25 | 5.436351 | 101.163785 |
| JGR-PRH 24 | 5.436141 | 101.1636713 |
| JGR-PRH 23 | 5.435923 | 101.1635602 |
| JGR-PRH 22 | 5.435689 | 101.1634429 |
| JGR-PRH 21 | 5.435448 | 101.1633291 |
| JGR-PRH 20 | 5.435179 | 101.1632402 |
| JGR-PRH 19 | 5.434947 | 101.163179 |
| JGR-PRH 18 | 5.434741 | 101.1631079 |
| JGR-PRH 17 | 5.434527 | 101.1630421 |
| JGR-PRH 16 | 5.434335 | 101.1629549 |
| JGR-PRH 15 | 5.434166 | 101.162893 |
| JGR-PRH 14 | 5.433942 | 101.1628341 |
| JGR-PRH 13 | 5.433707 | 101.1627831 |
| JGR-PRH 12 | 5.433458 | 101.1627294 |
| JGR-PRH 11 | 5.433218 | 101.1627105 |

| PROPOSED POLE COORDINATE | | |
|--------------------------|----------|-------------|
| POLE NUMBER | LATITUDE | LONGITUDE |
| JGR-PRH 10 | 5.432935 | 101.1626607 |
| JGR-PRH 9 | 5.432695 | 101.1625735 |
| JGR-PRH 8 | 5.432508 | 101.1624843 |
| JGR-PRH 7 | 5.432329 | 101.162349 |
| JGR-PRH 6 | 5.432148 | 101.1622204 |
| JGR-PRH 5 | 5.431948 | 101.162066 |
| JGR-PRH 4 | 5.43176 | 101.1619219 |
| JGR-PRH 3 | 5.431563 | 101.1617562 |
| JGR-PRH 2 | 5.431394 | 101.1616058 |
| JGR-PRH 1 | 5.43124 | 101.1614709 |
| KJ C 1 | 5.431076 | 101.1612967 |
| KJ C 2 | 5.4308 | 101.1610825 |
| KJ C 3 | 5.43064 | 101.1609523 |
| No ID | 5.430472 | 101.1608208 |
| No ID | 5.430208 | 101.1606144 |
| KJ C 5 | 5.429949 | 101.1604127 |
| KJ C 6 | 5.429658 | 101.1601975 |
| KJ C 7 | 5.42934 | 101.159927 |
| KJ C 8 | 5.42901 | 101.1596413 |
| KJ C 9 | 5.428802 | 101.1594552 |
| KJ C 10 | 5.428593 | 101.1592612 |
| KJ C 11 | 5.428388 | 101.1590442 |
| KJ C 12 | 5.428115 | 101.1587436 |
| KJ C 13 | 5.427869 | 101.1584554 |
| KJ C 14 | 5.427605 | 101.1581715 |
| KJ C 15 | 5.427376 | 101.1579666 |
| KJ C 16 | 5.427115 | 101.1577961 |
| KJ C 17 | 5.426885 | 101.1576422 |
| KJ C 18 | 5.426674 | 101.1575116 |
| KJ C 19 | 5.426489 | 101.1574234 |
| KJ C 20 | 5.426267 | 101.1572805 |
| KJ C 21 | 5.426002 | 101.157121 |
| KJ C 22 | 5.425795 | 101.156973 |
| New Pole 1 | 5.425366 | 101.1565616 |
| New Pole 2 | 5.42483 | 101.1560417 |
| New Pole 3 | 5.424215 | 101.1555026 |
| KK A 32 A | 5.423724 | 101.1549768 |
| KK A 31A | 5.423566 | 101.1546445 |
| KK A 30A | 5.423552 | 101.15438 |
| KK A 29A | 5.423517 | 101.1541939 |
| KK A 28A | 5.423449 | 101.1539832 |

| PROPOSED POLE COORDINATE | | |
|--------------------------|----------|-------------|
| POLE NUMBER | LATITUDE | LONGITUDE |
| KK A 27A | 5.423358 | 101.1538003 |
| KKA 26A | 5.423207 | 101.1537967 |
| No ID | 5.423117 | 101.1536846 |
| KK A 24 A | 5.422996 | 101.1535609 |
| NO ID | 5.422866 | 101.1534098 |
| NO ID | 5.42272 | 101.1533082 |
| KK A 21A | 5.422595 | 101.1532081 |
| NO ID | 5.422447 | 101.1531042 |
| KK A 19A | 5.422272 | 101.1529944 |
| KKA 19A 1 | 5.422298 | 101.1529379 |
| NO ID | 5.422152 | 101.1528974 |
| NO ID | 5.421958 | 101.1528399 |
| NO ID | 5.421557 | 101.1527062 |
| NO ID | 5.421332 | 101.1526703 |
| KK A 15A | 5.421045 | 101.152558 |
| KK A 14A | 5.420742 | 101.1523791 |
| NO ID | 5.420373 | 101.15222 |
| KK A 12A | 5.420059 | 101.1519994 |
| KK A 11 A | 5.419839 | 101.1517783 |
| KK A 10A | 5.419703 | 101.1514415 |
| NO ID | 5.419499 | 101.1512382 |
| KK A 8A | 5.419329 | 101.151092 |
| NO ID | 5.419114 | 101.150865 |
| KK A 6A | 5.41893 | 101.150638 |
| NO ID | 5.418828 | 101.150292 |
| KK A 4A | 5.418634 | 101.1501905 |
| KK A 3A | 5.418345 | 101.149981 |
| KK A 2A | 5.418003 | 101.1498627 |
| KK 1A | 5.417703 | 101.1498253 |
| KK B 2 | 5.417536 | 101.1498604 |
| KK B 3 | 5.41735 | 101.14976 |
| NO ID | 5.417123 | 101.1496512 |
| KK B 4 | 5.416892 | 101.1495644 |
| KK B 5 | 5.416538 | 101.1494235 |
| NO ID | 5.41637 | 101.1492383 |
| KK B 7 | 5.41644 | 101.1490299 |
| KK B 8 | 5.416588 | 101.1487857 |
| KK B 9 | 5.416705 | 101.1483974 |
| KK B 10 | 5.416744 | 101.148218 |
| KK B 11 | 5.416821 | 101.1479879 |
| NO ID | 5.416958 | 101.1477494 |

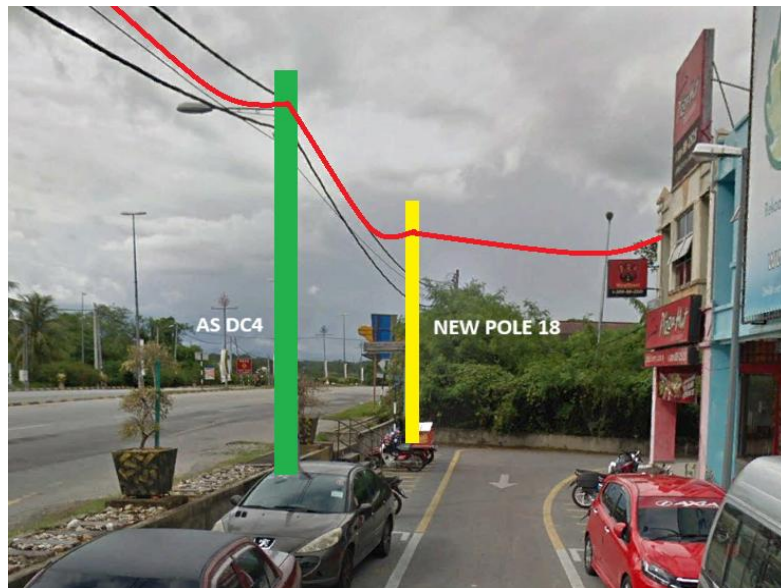
| PROPOSED POLE COORDINATE | | |
|--------------------------|----------|-------------|
| POLE NUMBER | LATITUDE | LONGITUDE |
| KK B 13 | 5.417213 | 101.1475096 |
| KK B 14 | 5.417295 | 101.147291 |
| KK B 15 | 5.417214 | 101.1470597 |
| KK B 16 | 5.417253 | 101.1468017 |
| KK B 17 | 5.417284 | 101.1466103 |
| KK B 18 | 5.417055 | 101.1463148 |
| KK B 19 | 5.416922 | 101.1458776 |
| KK B 20 | 5.41685 | 101.1456439 |
| KK B 21 | 5.416793 | 101.1454195 |
| KK B 22 | 5.416793 | 101.1453018 |
| PPU PB 76 | 5.416913 | 101.1451733 |
| PPU PB 74 | 5.41708 | 101.1448302 |
| PPU PB 73 | 5.417189 | 101.1446197 |
| PPU PB 72 | 5.417278 | 101.1442651 |
| PPU PB 70 | 5.417275 | 101.1439521 |
| PPU PB 69 | 5.417101 | 101.1437543 |
| PPU PB 68 | 5.416911 | 101.1435773 |
| PPU PB 67 | 5.416834 | 101.1434347 |
| PPU PB 66 | 5.416831 | 101.143232 |
| PPU PB 65 | 5.416822 | 101.1430639 |
| PPU PB 64 | 5.416832 | 101.1428366 |
| PPU PB 63 | 5.416859 | 101.1425396 |
| PPU PB 62 | 5.416901 | 101.1423231 |
| PPU PB 61 | 5.416982 | 101.1420978 |
| PPU PB 60 | 5.417066 | 101.1419149 |
| PPU PB 59 | 5.417134 | 101.1417838 |
| PPU PB 58 | 5.417235 | 101.1416446 |
| PPU PB 57 | 5.417263 | 101.1412683 |
| PPU PB 56 | 5.417349 | 101.1410456 |
| PPU PB 55 | 5.417534 | 101.1409202 |
| PPU PB 40 | 5.417656 | 101.1376889 |
| PPU PB 54 | 5.417712 | 101.1407768 |
| PPU PB 53 | 5.417802 | 101.1406701 |
| PPU PB 52 | 5.4179 | 101.1405169 |
| PPU PB 51 | 5.41787 | 101.1403086 |
| PPU PB 50 | 5.4178 | 101.1400138 |
| NO ID | 5.417785 | 101.139847 |
| PPU PB 49 | 5.417737 | 101.139507 |
| PPU PB 47 | 5.417703 | 101.1391911 |
| PPU PB 46 | 5.417696 | 101.138999 |
| PPU PB 45 | 5.41766 | 101.138649 |

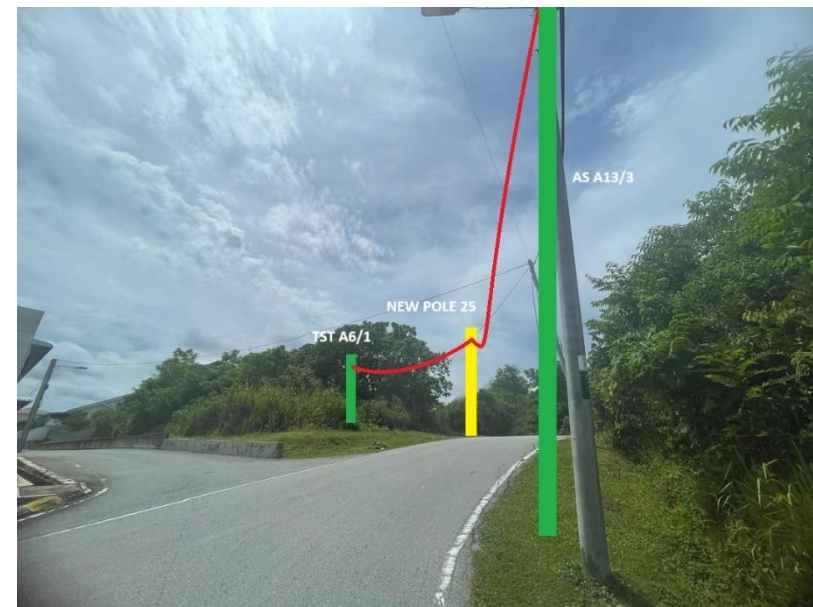
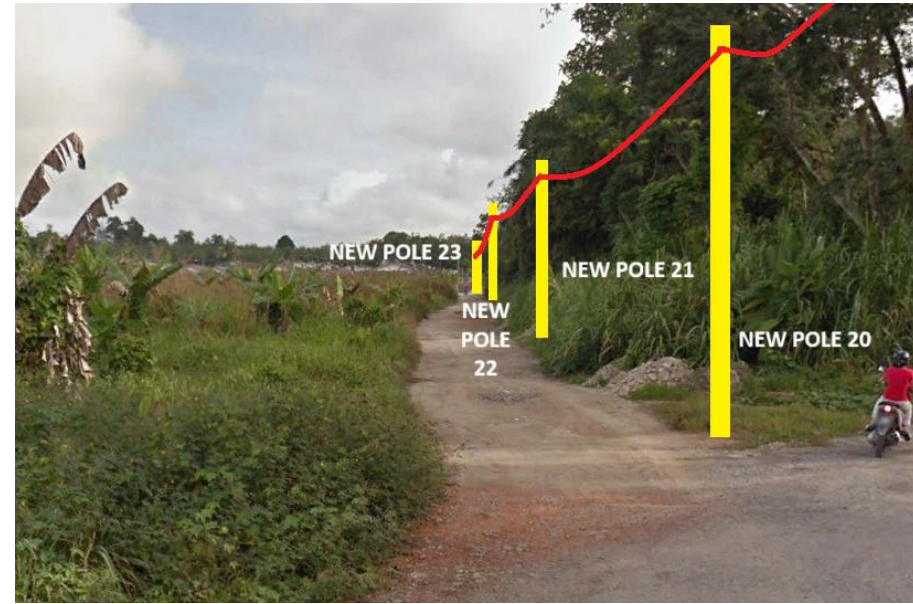
| PROPOSED POLE COORDINATE | | |
|---------------------------------|-----------------|------------------|
| POLE NUMBER | LATITUDE | LONGITUDE |
| PPU PB 44 | 5.417655 | 101.1384218 |
| PPU PB 42 | 5.417643 | 101.138188 |
| PPU PB 41 | 5.417641 | 101.1379157 |
| PPU PB 39 | 5.417701 | 101.1374572 |
| PPU PB 38 | 5.41779 | 101.1371675 |

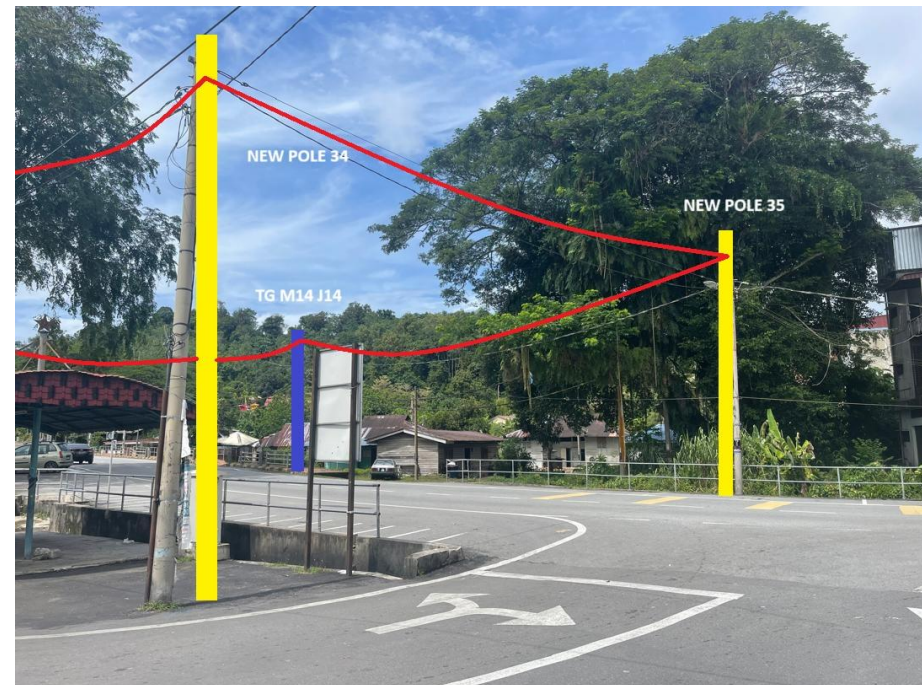
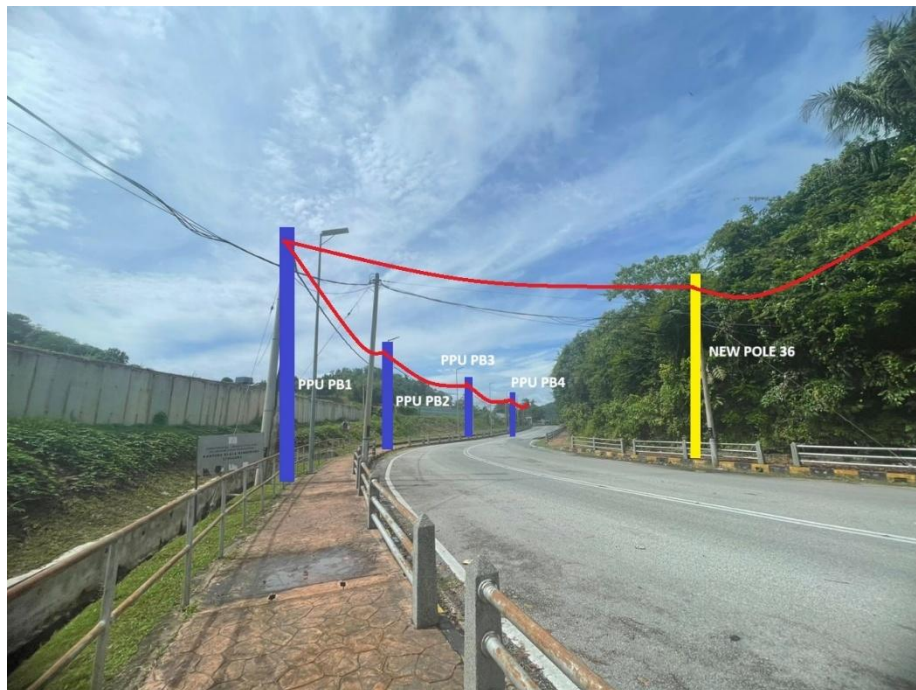
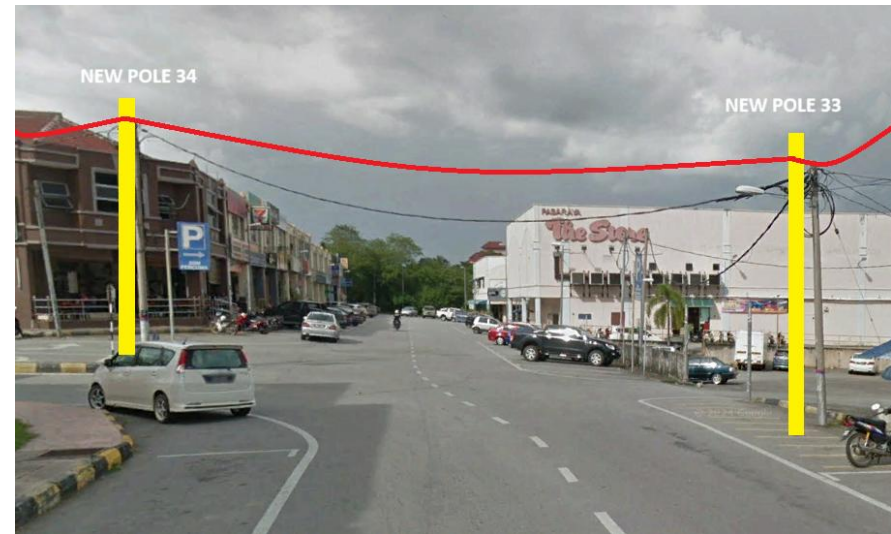
Site Photos – Proposed New Pole

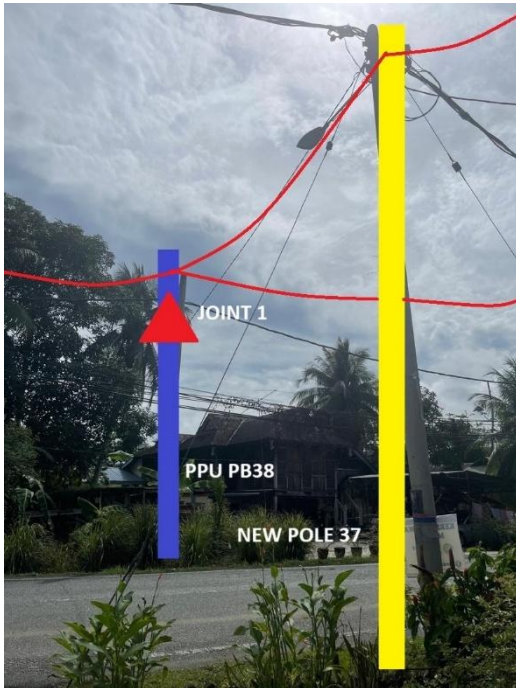
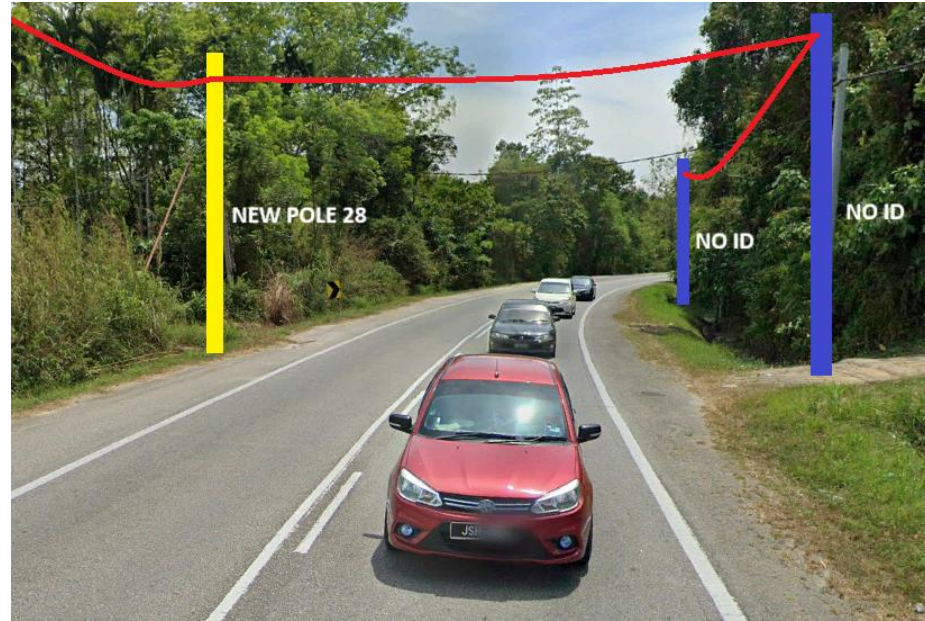
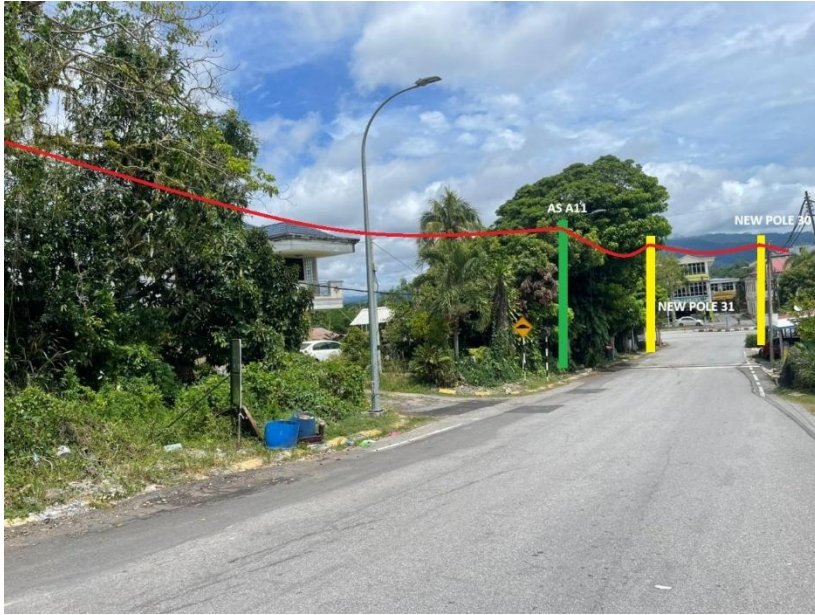


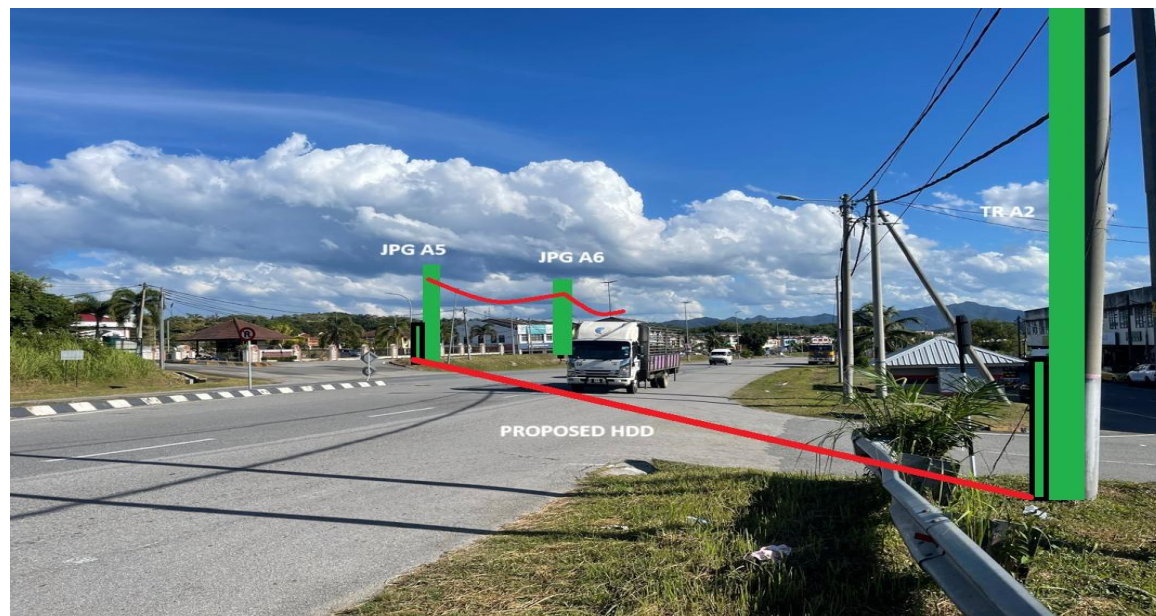
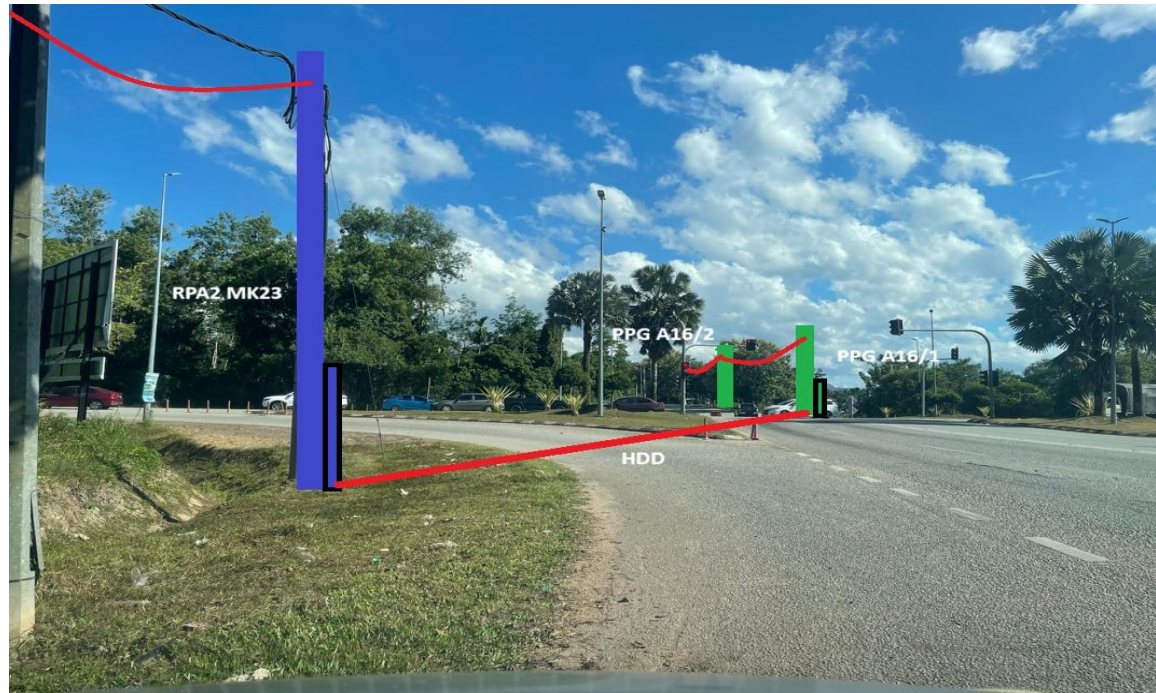














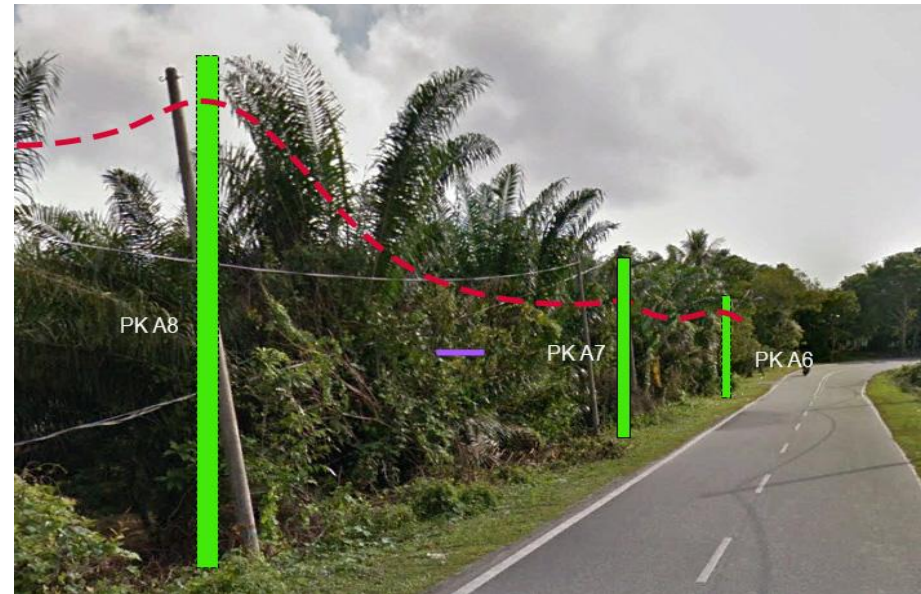
Site Photos – Proposed New Pole 9M & Micro Trenching 150M



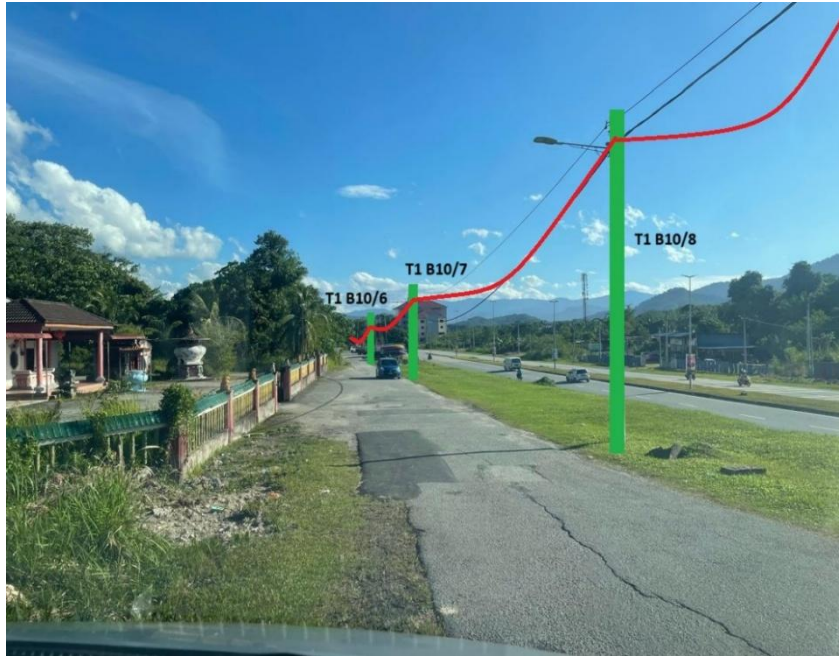
Site Photos – Proposed New Pole 9M & Expose GI 60M Crossing River



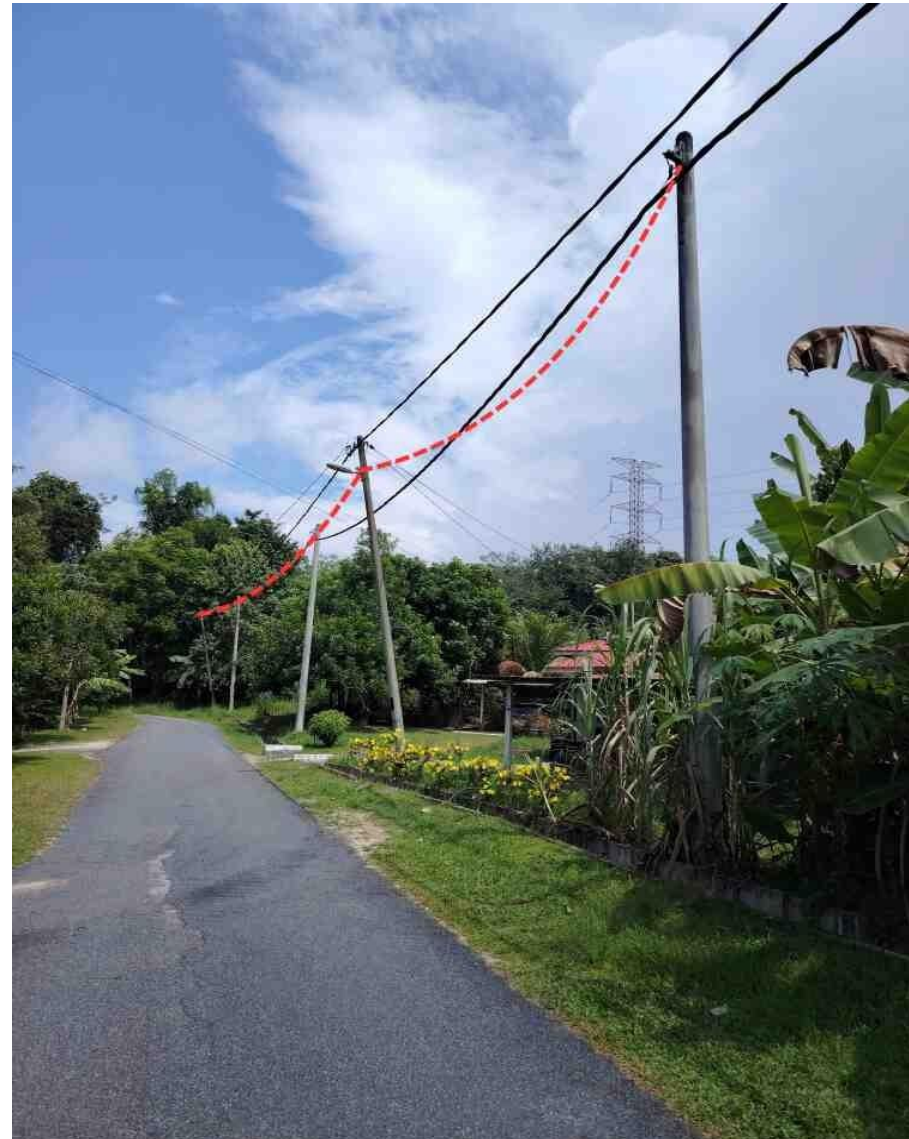
Site Photos – Proposed Existing Pole



















PROJEK PENYEDIAAN DAN PENYELENGGARAAN POINT OF PRESENCE (POP)
FASA 2: HAB INFRASTRUKTUR GENTIAN OPTIK BERHAMPIRAN DENGAN
SEKOLAH, KAWASAN PERINDUSTRIAN, PREMIS KERAJAAN DAN KOMUNITI
SEKITARNYA OLEH KEMENTERIAN KOMUNIKASI MALAYSIA - ZON UTARA
(KKMM.400-11/17/132(1))



3rd Parties Dependencies

| No. | Local Council/ Authority | Remark |
|-----|--------------------------|--------|
| 1 | JKR Hulu Perak | |
| 2 | Majlis Daerah Hulu Perak | |
| 3 | | |
| 4 | | |
| 5 | | |
| 6 | | |
| | | |